



**United States Department of the Army
and the
South Carolina Department of Health and Environmental Control**

February 18, 2018

JOINT PUBLIC NOTICE

Myrtle Beach Storm Damage Reduction Project – Emergency Beach Renourishment

Notice of Availability:

Federal Consistency Determination for the Myrtle Beach Storm Damage Reduction Project – Emergency Beach Renourishment, Atlantic Ocean, Horry County, South Carolina.

Public Participation:

The U.S. Army Corps of Engineers (USACE), Charleston District, in conjunction with the S.C. Department of Health and Environmental Control, Offices of Ocean and Coastal Resources Management (SCDHEC OCRM) are inviting project comment and this notice serves as a public notice on their behalf. The proposed beach renourishment is subject to review for consistency with the enforceable policies of the South Carolina Coastal Zone Management Program. **Comments will be accepted until March 20, 2018.** Detailed project information is available to review in the Charleston offices of the USACE or SCDHEC OCRM, or online at:

<http://www.sac.usace.army.mil/Missions/CivilWorks/NEPADocuments.aspx>.

Federal Project Authorization and Project Description:

The Myrtle Beach Storm Damage Reduction Project was authorized for construction by Section 101 of the Water Resources Development Act of 1990, Public Law 101-640, dated November 28, 1990 (WRDA 90): “MYRTLE BEACH, SOUTH CAROLINA. The authorized project requires the construction of separate protective beach in three separate reaches, North Myrtle Beach (Reach 1), Myrtle Beach (Reach 2), and Garden City/Surfside Beach (Reach 3).” Periodic nourishment is required every 10 years at Reach 1, and every 8 years with one 10-year effort at Reaches 2 and 3. The total project extent is 25.3 miles. Emergency rehabilitation to portions of the Myrtle Beach Storm Damage Reduction Project are being proposed, pursuant to the Food Control and Coastal Emergency Act (P.L. 84-99), 33 USC 701n, as a result of recent storms. Hurricane Matthew and Hurricane Irma caused significant erosion and dune loss, putting life, property, and habitat at risk.

Environmental compliance documentation for the different reaches of the project can be found online at the web address above. Most recently, a draft Environmental Assessment and draft Finding of No Significant Impact for the City of Myrtle Beach (Reach 2) have been prepared by the USACE and are available for reference and comment.

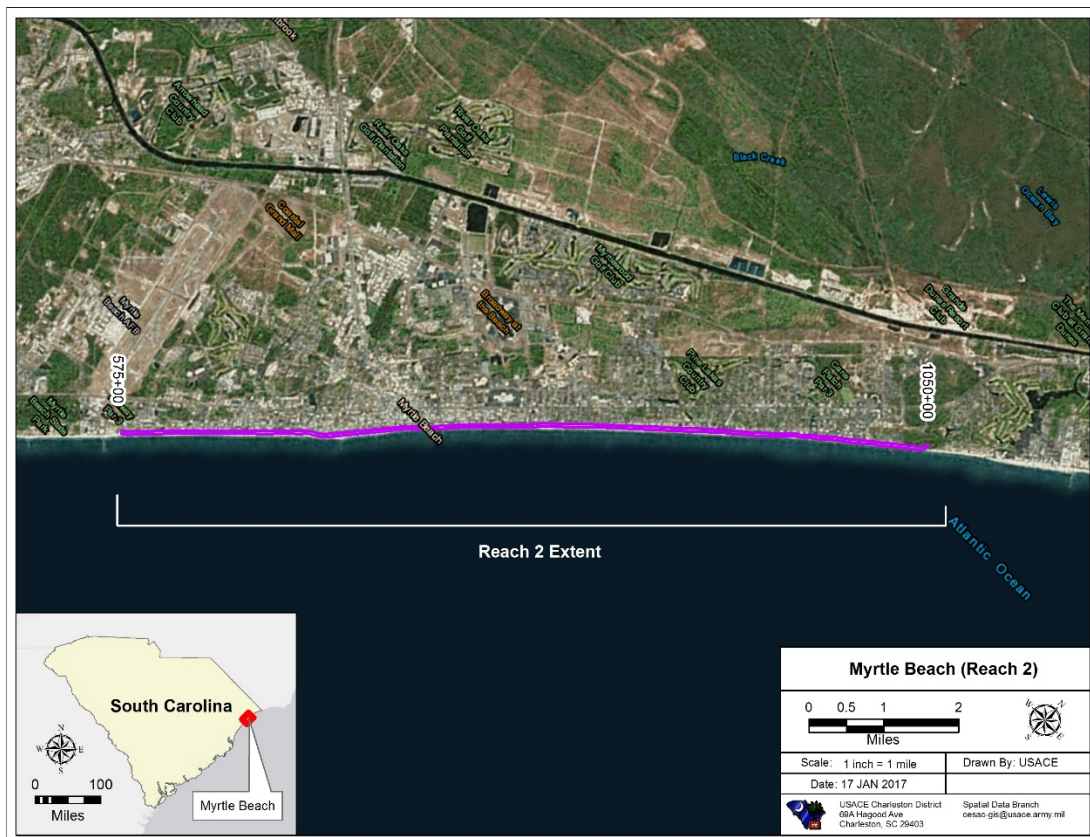
Approximately 1,100,000 cy of beach-compatible sand will be placed at the City of Myrtle Beach (Reach

2) from Station 575 to Station 1050 ((~ Farrow Parkway to ~ Grand Dunes Blvd), spanning approximately nine miles of shoreline. Renourishment is needed to repair impacts from Hurricanes Matthew and Irma, and for periodic renourishment. Material will come from the approved Cane South borrow area, located approximately two miles offshore from Myrtle Beach in South Carolina state waters. Limited emergency renourishment is proposed for Reaches 1 and 3. Approximately 200,000 cy of beach-compatible sand will be placed at North Myrtle Beach (Reach 1) from Station 1420 to Station 1570 (~ 20th Ave S to ~ 12th Ave N), to rebuild the approved template after losses from Hurricane Irma. Material will come from the approved Little River borrow area, located approximately two miles offshore from North Myrtle Beach and southwest of Little River Inlet in South Carolina state waters. Approximately 400,000 cy of beach-compatible sand will be placed at Surfside/Garden City Beach (Reach 3) from Station 250 to Station 495 (~ Oceanside Drive to ~Dogwood Drive), to rebuild to the approved template after losses from Hurricane Irma. Material will come from the approved Surfside borrow area, located 4-7 miles offshore from Murrells Inlet, in Federal waters on the outer continental shelf. Proposed project work is expected to occur from May – December 2018.

The USACE has provided SCDHEC OCRM with a determination that the proposed activity will be undertaken in a manner consistent to the maximum extent practicable with the enforceable policies of the South Carolina Coastal Zone Management Program (SCCZMP). Applicable enforceable resource policies of the SCCZMP include: (1) Wildlife and Fisheries Management, (2) Dredging, (3) Erosion Control, (4) Activities in Areas of Special Resource Significance, and (5) Beach and Shoreline Access. Comments are invited on the consistency of the project with the SCCZMP, pursuant to 15 C.F.R. § 930.42, regulations associated with the Federal Coastal Zone Management Act of 1972. The SCCZMP enforceable policies may be reviewed in detail at:

http://www.scdhec.gov/Environment/docs/OCRM_Policies_Procedures.pdf

Project Maps:



Map of Renourishment Extent at the City of Myrtle Beach (Reach 2)

(Map scale 1 inch = 1 mile)



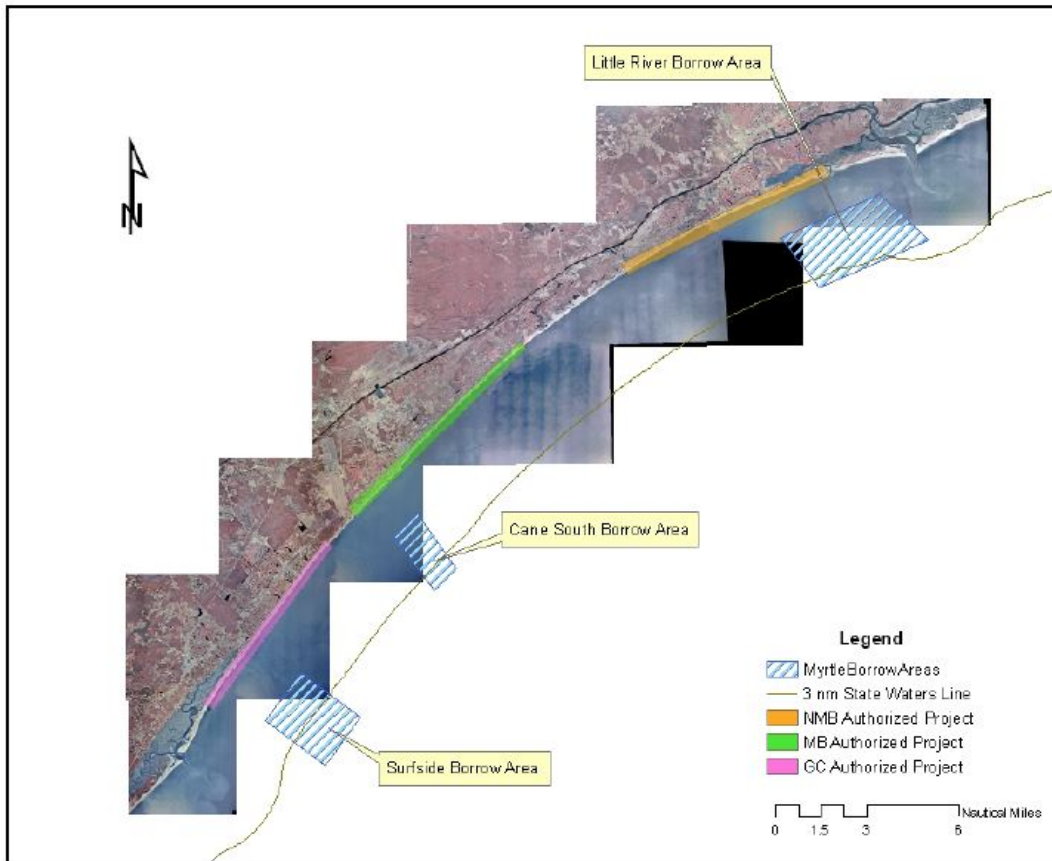
Map of Renourishment Extent at North Myrtle Beach (Reach 1)

(Map scale 1 inch = 0.35 miles)



Map of Renourishment Extent at Garden City/Surfside Beach (Reach 3)

(Map scale 1 inch = 0.06 miles)



Overall Placement & Approved Borrow Sites for Myrtle Beach Storm Damage Reduction Project

Comments will be accepted until March 20, 2018 on the project and should be addressed or emailed to:

Bethney Ward
 Biologist
 US Army Corps of Engineers
 Charleston District
 69A Hagood Ave
 Charleston, SC 29412
Bethney.P.Ward@usace.army.mil

Jeannie Lewis
 Coastal Zone Consistency Project Manager, Regulatory Division
 SC Department of Health and Environmental Control
 Ocean and Coastal Resource Management
 1362 McMillan Ave; Suite 400
 Charleston, SC 29405
LewisAJ@dhec.sc.gov

Further information on Federal Consistency:

<http://www.scdhec.gov/environment/WaterQuality/CoastalPermits/CoastalZoneConsistency/>

<https://coast.noaa.gov/czm/consistency/>