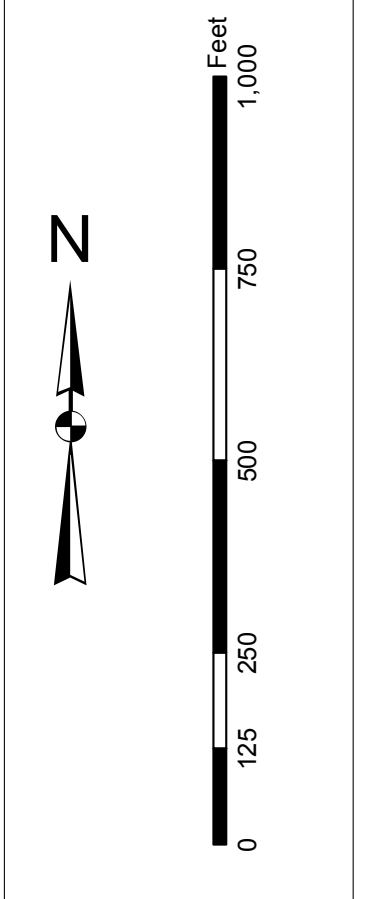


**Projections:**  
 1. North American Datum of 1983  
 2. Vertical datum is Mean Sea Level  
 3. Soundings are in feet and tenths  
 4. All depths are minimum unless otherwise noted  
 5. All depths are subject to change  
 6. All depths are subject to change  
 7. All depths are subject to change  
 8. All depths are subject to change  
 9. All depths are subject to change  
 10. All depths are subject to change

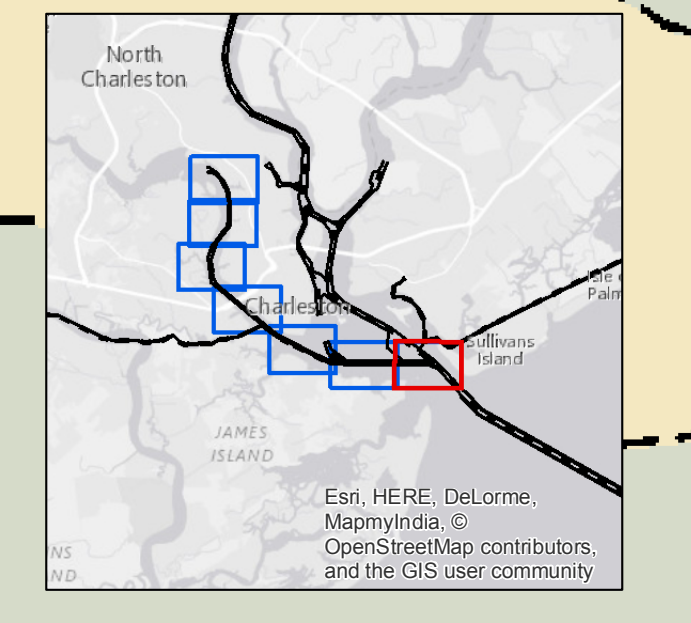


**Legend**

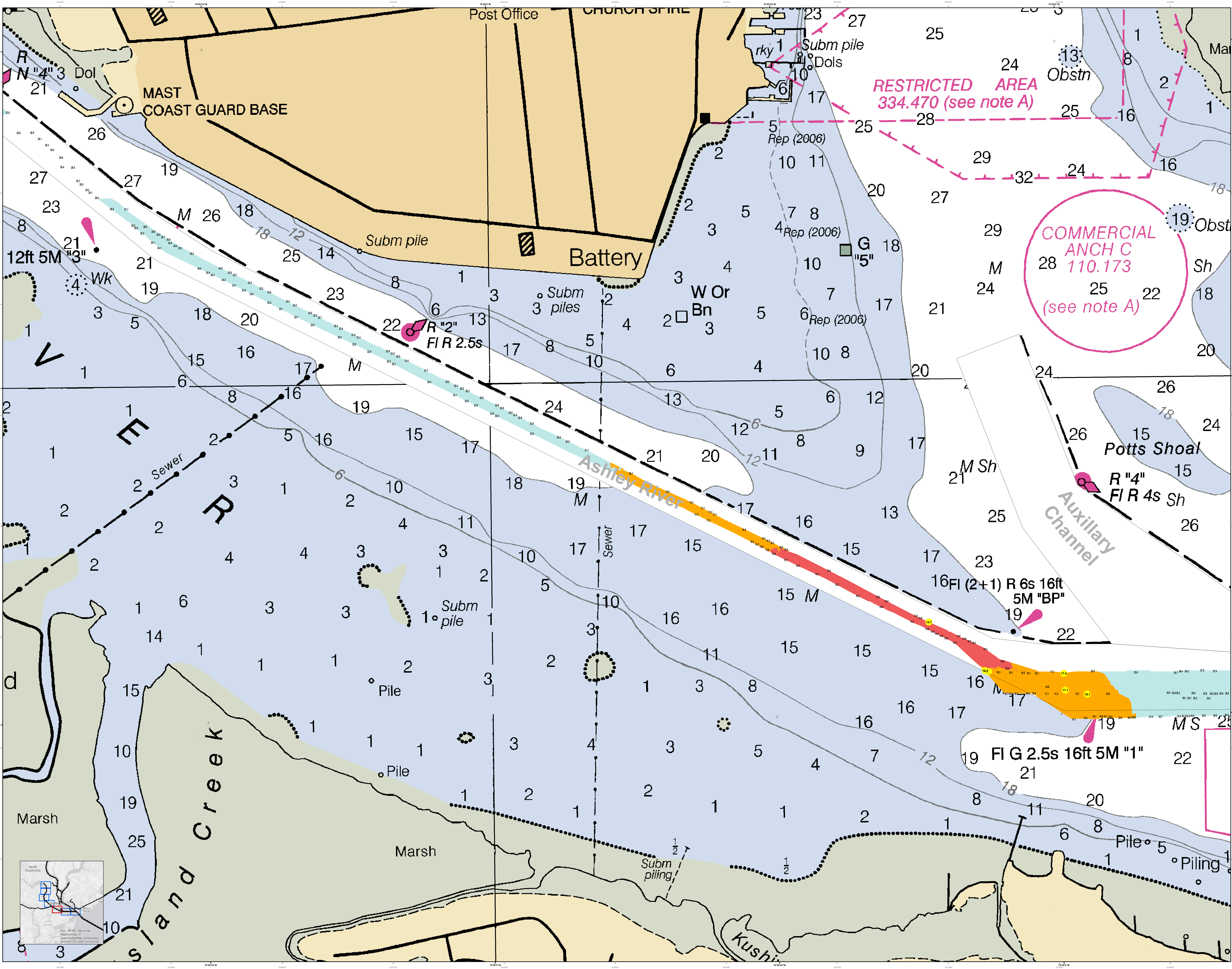
Symbol	Description
(Color swatches)	Depth soundings
(Color swatches)	Obstructions
(Color swatches)	Navigation aids
(Color swatches)	Structures
(Color swatches)	Other

Designed by:	U.S. Army Corps of Engineers
Reviewed by:	U.S. Army Corps of Engineers
Design date:	16 Dec 2014
Project reference number:	13000
Survey type:	Single-beam Condition Survey
Reference scale:	1 inch = 250 feet
Projection:	NAD 1983 StatePlane South Carolina FIPS 3200 Feet

**Ashley River Channel Condition**  
 Channel soundings based on single and/or multibeam surveys conducted by the Charleston District, U.S. Army Corps of Engineers, from 2010 to 2013. Concluded on: 29 April 2013  
 Charleston, South Carolina

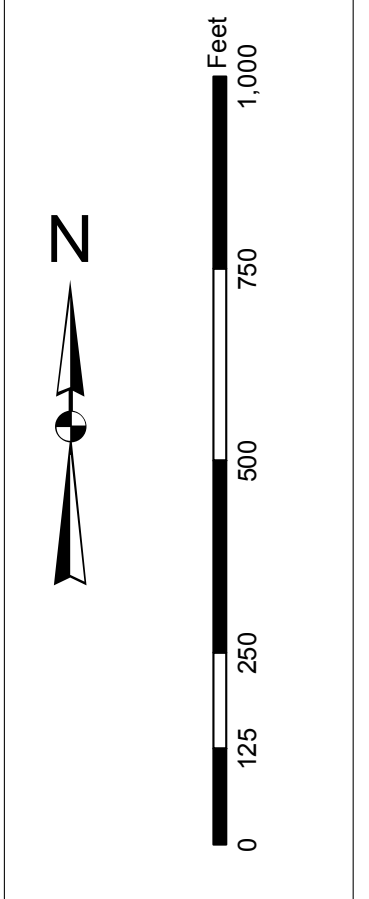






**RESTRICTED AREA**  
334.470 (see note A)

**COMMERCIAL ANCH C**  
28 110.173  
(see note A)



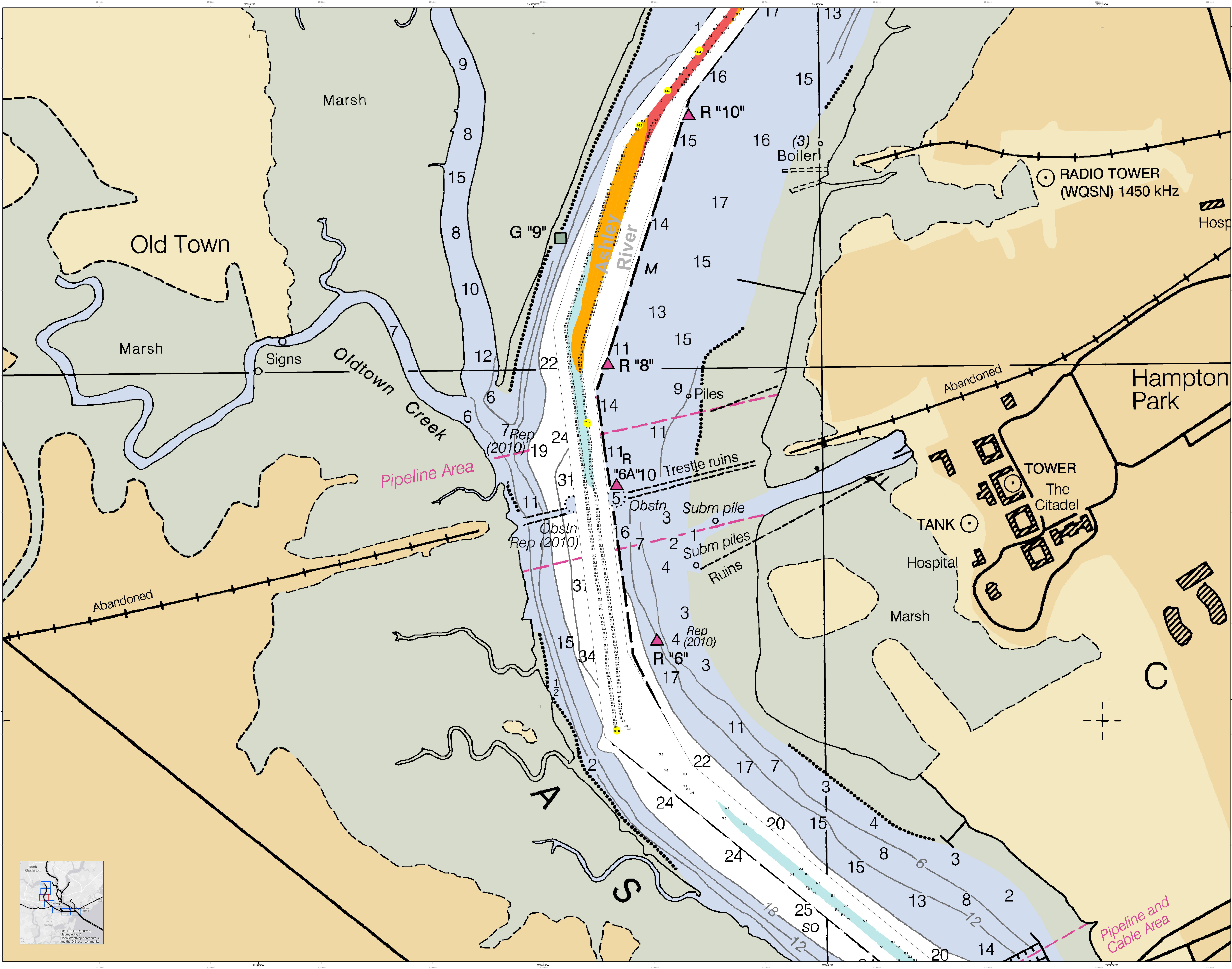
**Legend**

Soundings	Depth
Obstruction	Light
Structure	Channel
Boundary	Other

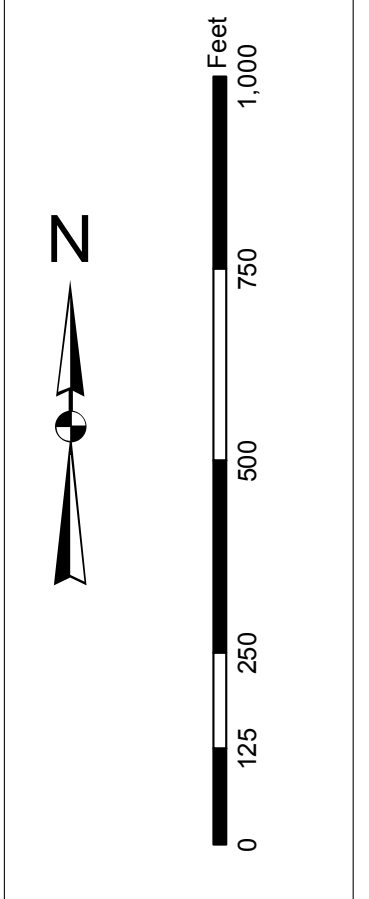
Designed by:	U.S. Army Corps of Engineers
Reviewed by:	Charleston District
Reference scale:	1 inch = 250 feet
Projection:	NAD 1983 StatePlane South Carolina FIPS 3200 Feet

**Ashley River Channel Condition**  
Channel soundings based on single and/or multibeam surveys conducted by the Charleston District from 2010 to 2013. Concluded on 29 April 2013.  
Charleston, South Carolina





In the event that the U.S. Army Corps of Engineers, Charleston District Office, Special District Office, or District Office is contacted for information regarding this project, the user should refer to the project name and project number listed on the title block. This information is provided for informational purposes only and does not constitute a contract. The user should refer to the project name and project number listed on the title block for more information. This information is provided for informational purposes only and does not constitute a contract. The user should refer to the project name and project number listed on the title block for more information.

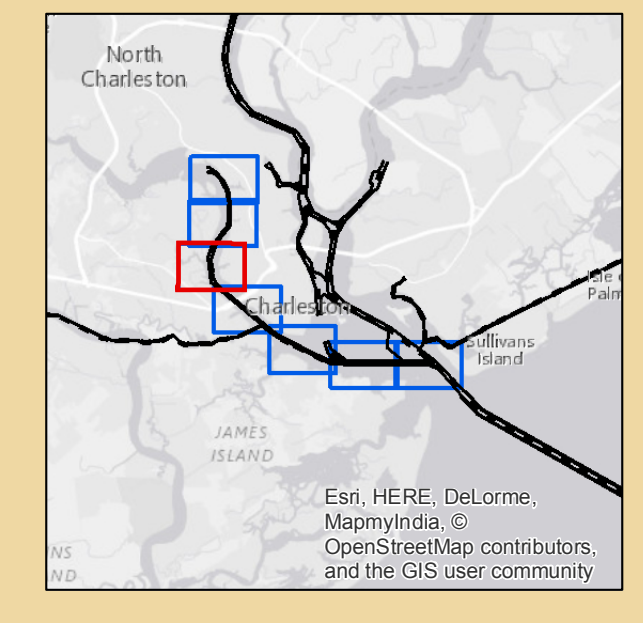


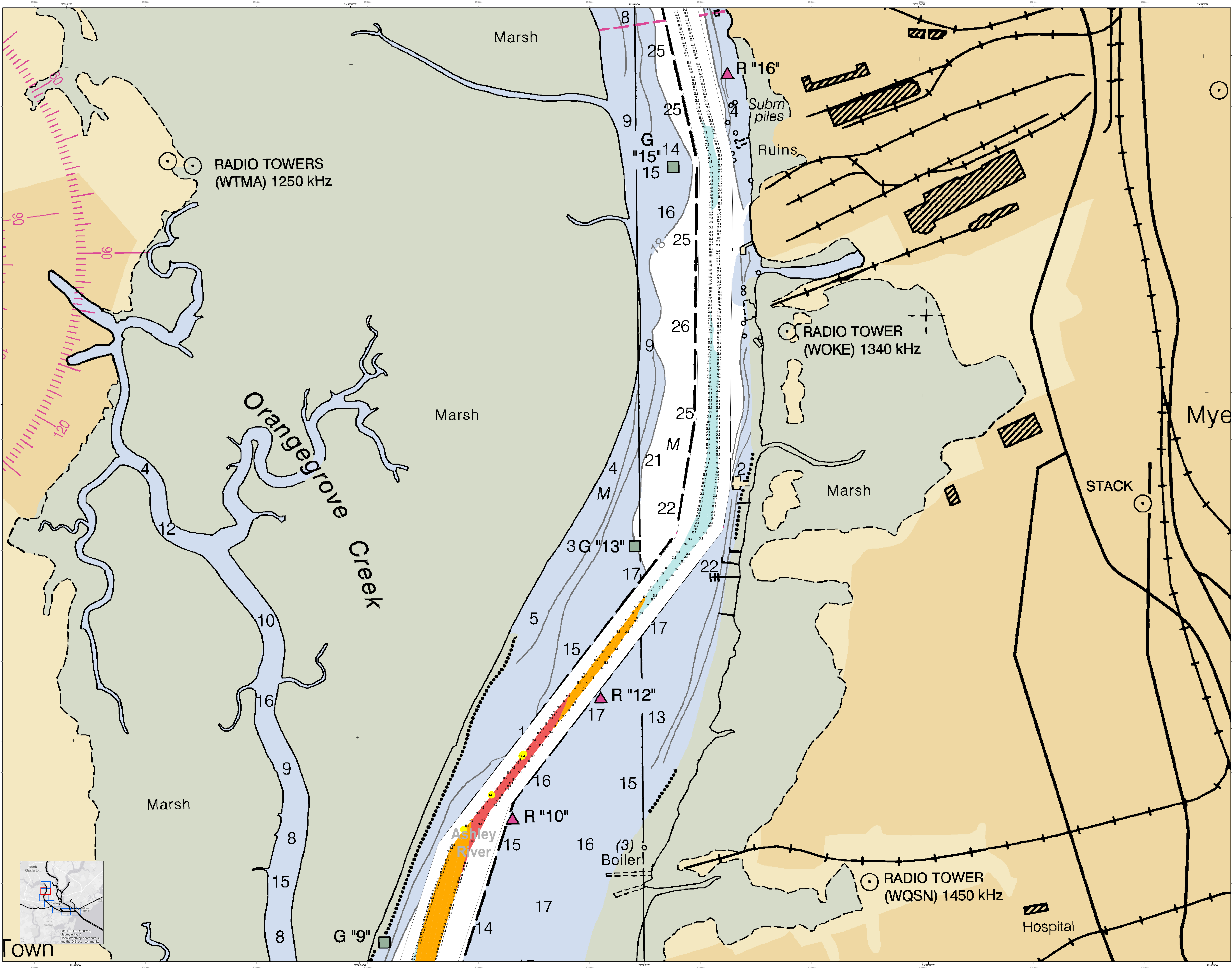
**Legend**

Soundings	10 to 15	16 to 20	21 to 25	26 to 30	31 to 35	36 to 40	41 to 45	46 to 50
Structure	Boiler	Obstn	Subm pile	Subm piles	Ruins	Trestle ruins	TOWER	HOSPITAL
Utility	Abandoned	Old Town	Marsh	Oldtown Creek	Signs	Pipeline Area	Hampton Park	Other

Designed by:	Hydro Software	Design date:	16 Dec 2014	Creation Date:	16 Dec 2014
Reviewed by:	1:5,000	Project Reference Number:	1000000	Project Reference Number:	1000000
Reference scale:	1 inch = 250 feet	Survey Type:	Single-beam Condition Survey	Survey Type:	Single-beam Condition Survey
Projection:	NAD 1983 StatePlane South Carolina FIPS 3800 Feet	Projection:	NAD 1983 StatePlane South Carolina FIPS 3800 Feet	Projection:	NAD 1983 StatePlane South Carolina FIPS 3800 Feet

**Ashley River Channel Condition**  
Channel soundings based on single and/or multibeam surveys conducted by the Charleston District Office, Charleston, South Carolina, on 29 April 2013.  
Concluded on 29 April 2013  
Charleston, South Carolina





**U.S. Army Corps of Engineers**  
Charleston District

**Legend**

- Soundings:** 4-10, 10-15, 15-20, 20-25, 25-30
- Used Beams:** 1200 kHz, 1340 kHz, 1450 kHz
- Used Survey:** Single-beam, Multi-beam
- Soundings:** 1200 kHz, 1340 kHz, 1450 kHz
- Soundings:** 1200 kHz, 1340 kHz, 1450 kHz
- Soundings:** 1200 kHz, 1340 kHz, 1450 kHz

**Design Data:**  
 Design date: 16 Dec 2014  
 Project Reference Number: 10000000  
 Survey Type: Single-beam Condition Survey  
 Reference scale: 1 inch = 250 feet  
 Projection: NAD 1983 StatePlane South Carolina FIPS 3200 Feet

**U.S. Army Corps of Engineers**  
 CHARLESTON DISTRICT  
 CHARLESTON, SOUTH CAROLINA  
 BAYVIEW BRANCH  
 800 HARGROVE AVE  
 CHARLESTON, SC 29403  
 CESAC-GIS@USACE.ARMY.MIL

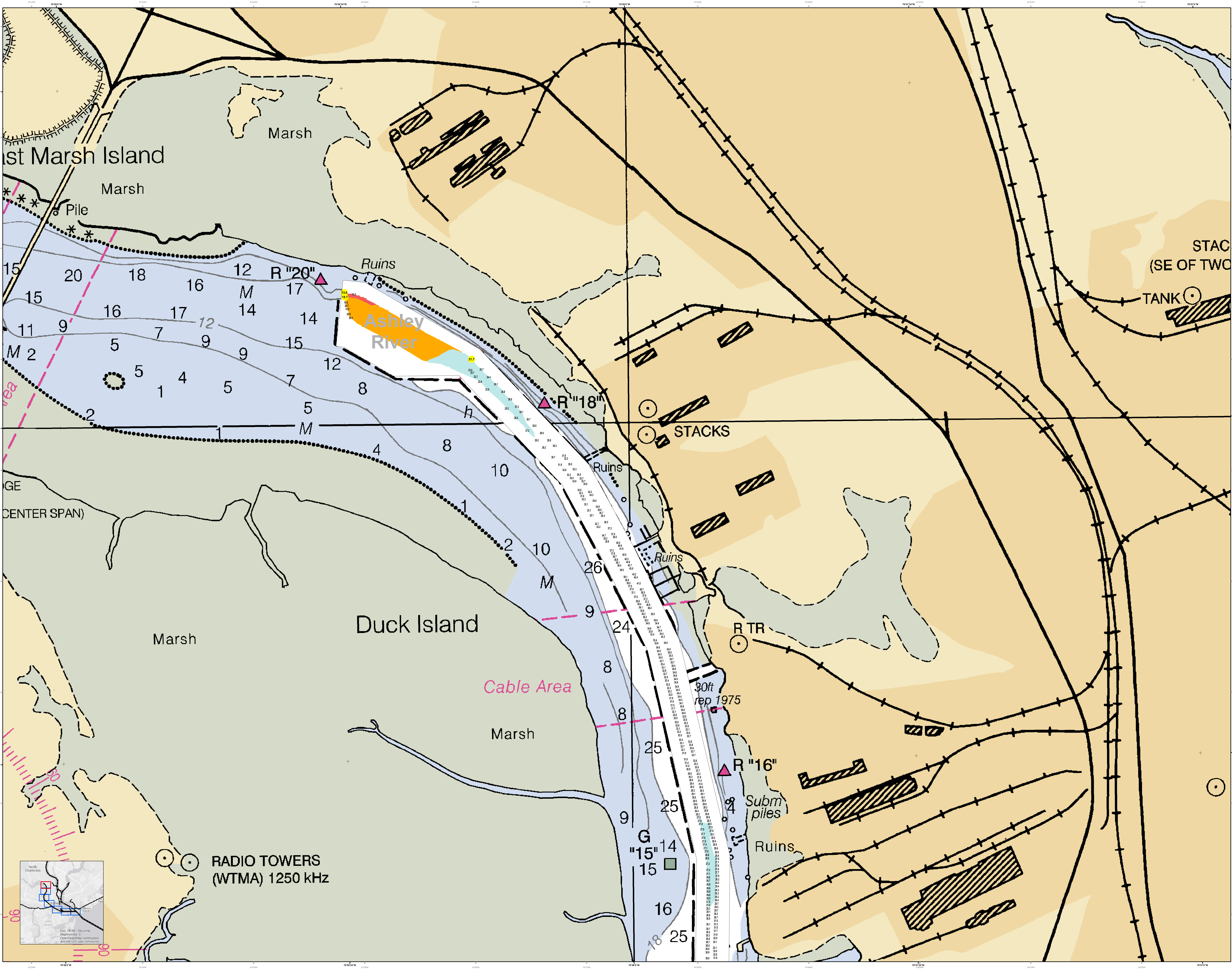
**Ashley River Channel Condition**  
 Channel soundings based on single and/or multi-beam surveys conducted by the Charleston District, U.S. Army Corps of Engineers, Charleston, South Carolina, on 29 April 2013.  
 Charleston, South Carolina

**SHEET REFERENCE NUMBER**  
 C002  
 SHEET 6 OF 7

**Town**

North Charleston

Map data © OpenStreetMap contributors, and the GIS user community



U.S. Army Corps of Engineers  
Charleston District

**Legend**

- Soundings: 1-10, 11-20, 21-30, 31-40, 41-50, 51-60, 61-70, 71-80, 81-90, 91-100
- Marsh: Marsh
- Ruins: Ruins
- Stacks: STACKS
- Cable Area: Cable Area
- Radio Towers: RADIO TOWERS (WTMA) 1250 kHz
- Subm Piles: Subm piles
- Other: Pile, Ruins, R "20", R "18", R "16", R TR, G "15" 14 15, 30ft rep 1975

**Scale**  
0 100 200 300 400 500 600 700 800 900 1000 Feet

**North Arrow**  
N

**Metadata**

Designed by:	U.S. Army Corps of Engineers, District of Charleston, South Carolina	Project Reference Number:	16 DEC 2014
Reviewed by:	Charleston District, South Carolina	Survey Type:	16 DEC 2014
Reference scale:	1 inch = 250 feet	Survey Type:	Single-beam Condition Survey
Projection:	NAD 1983 StatePlane South Carolina FIPS 3200 Feet		

**Project Information**

**Ashley River Channel Condition**  
Channel soundings based on single and/or multibeam surveys conducted by the Charleston District, South Carolina. Concludes on 29 April 2013. Charleston, South Carolina

**Sheet Reference**  
C002  
SHEET 7 OF 7