

SHEET  
REFERENCE  
NUMBER  
C003  
Page 1 of 25

**Atlantic Intercoastal Waterway (AIWW)  
Channel Survey**  
The information depicted on this map represents the results of surveys made on the dates indicated and can only be considered as indicating the general conditions existing at that time.  
Conducted on: **04 November 2014**  
Little River, SC to Bucksport, SC

U.S. ARMY ENGINEER DISTRICT  
CORPS OF ENGINEERS  
CHARLESTON, SOUTH CAROLINA  
SPATIAL DATA BRANCH  
69A HAGOOD AVE  
CHARLESTON, SC 29403  
CESAC-GIS@USACE.ARMY.MIL

Designed by: <b>eHydro Software v3.6.1</b>	Design date: <b>11 Dec 2014</b>	Export date: <b>11 Dec 2014</b>
Reviewed by: <b>J. West</b>	Absolute scale: <b>1:6,000</b>	Project Reference Number: <b>CESAC-PR-0001</b>
Reference scale: <b>1 inch = 500 feet</b>	Survey Type: <b>Multi-beam Condition Survey</b>	
Projection: <b>NAD 1983 StatePlane South Carolina FIPS 3900 Feet</b>		

**Shoalest Sounding**  
● Sounding  
*Sounding may cover several point areas and is calculated per reach quarter area*  
"±" indicates sounding above MLLW

**USCG Beacon**  
■ Green  
▲ Red  
□ White

**USCG Buoy**  
● Green  
● Red  
● Coast Guard Racon

○ White  
○ Yellow  
○ USCG Light

**Depth in feet**

Less than 3	3 to 6	6 to 9	9 to 12	Greater than 12
-------------	--------	--------	---------	-----------------

0 250 500 1,000 1,500 Feet



**Production Notes:**  
1. The information depicted on this product is for plotting purposes only.  
2. Vector hydrographic data derived from surveys conducted by the USACE and approved partners. Soundings are in feet and refer to Mean Lower Low Water (MLLW).  
3. Raster Background: ArcGIS Online Imagery Basemap.  
4. This product is not intended to be used for navigation. Mariners are encouraged to use all prudent safety measures.

In no event shall the U.S. Army Corps of Engineers, Charleston District Office, Spatial Data Branch be liable for direct, indirect, incidental, consequential or special damages of any kind, including, but not limited to, loss of anticipated profits or benefits arising out of use of or reliance on the data. These data sets have been developed from the best available sources. Although efforts have been made to ensure that the data sets are accurate and reliable, errors and variable conditions originating from physical sources used to develop the data may be reflected in the data supplied.





SHEET  
REFERENCE  
NUMBER  
C003  
Page 2 of 25

**Atlantic Intercoastal Waterway (AIWW) Channel Survey**  
The information depicted on this map represents the results of surveys made on the dates indicated and can only be considered as indicating the general conditions existing at that time.  
Conducted on: **04 November 2014**  
Little River, SC to Bucksport, SC

U.S. ARMY ENGINEER DISTRICT  
CORPS OF ENGINEERS  
CHARLESTON, SOUTH CAROLINA  
SPATIAL DATA BRANCH  
69A HAGOOD AVE  
CHARLESTON, SC 29403  
CESAC-GIS@USACE.ARMY.MIL

Designed by: <b>eHydro Software v3.6.1</b>	Design date: <b>11 Dec 2014</b>	Export date: <b>11 Dec 2014</b>
Reviewed by: <b>J. West</b>	Absolute scale: <b>1:6,000</b>	Project Reference Number: <b>CESAC-PRA-0001</b>
Reference scale: <b>1 inch = 500 feet</b>	Survey Type: <b>Multi-beam Condition Survey</b>	
Projection: <b>NAD 1983 StatePlane South Carolina FIPS 3900 Feet</b>		

**Shoalest Sounding**  
● Sounding  
*Sounding may cover several point areas and is calculated per reach quarter area*  
"±" indicates sounding above MLLW

**USCG Beacon**  
■ Green  
▲ Red  
□ White

**USCG Buoy**  
● Green  
● Red  
● Coast Guard Racon

○ White  
○ Yellow  
○ USCG Light

**Depth in feet**

Less than 3	3 to 6	6 to 9	9 to 12	Greater than 12
-------------	--------	--------	---------	-----------------

0 250 500 1,000 1,500 Feet

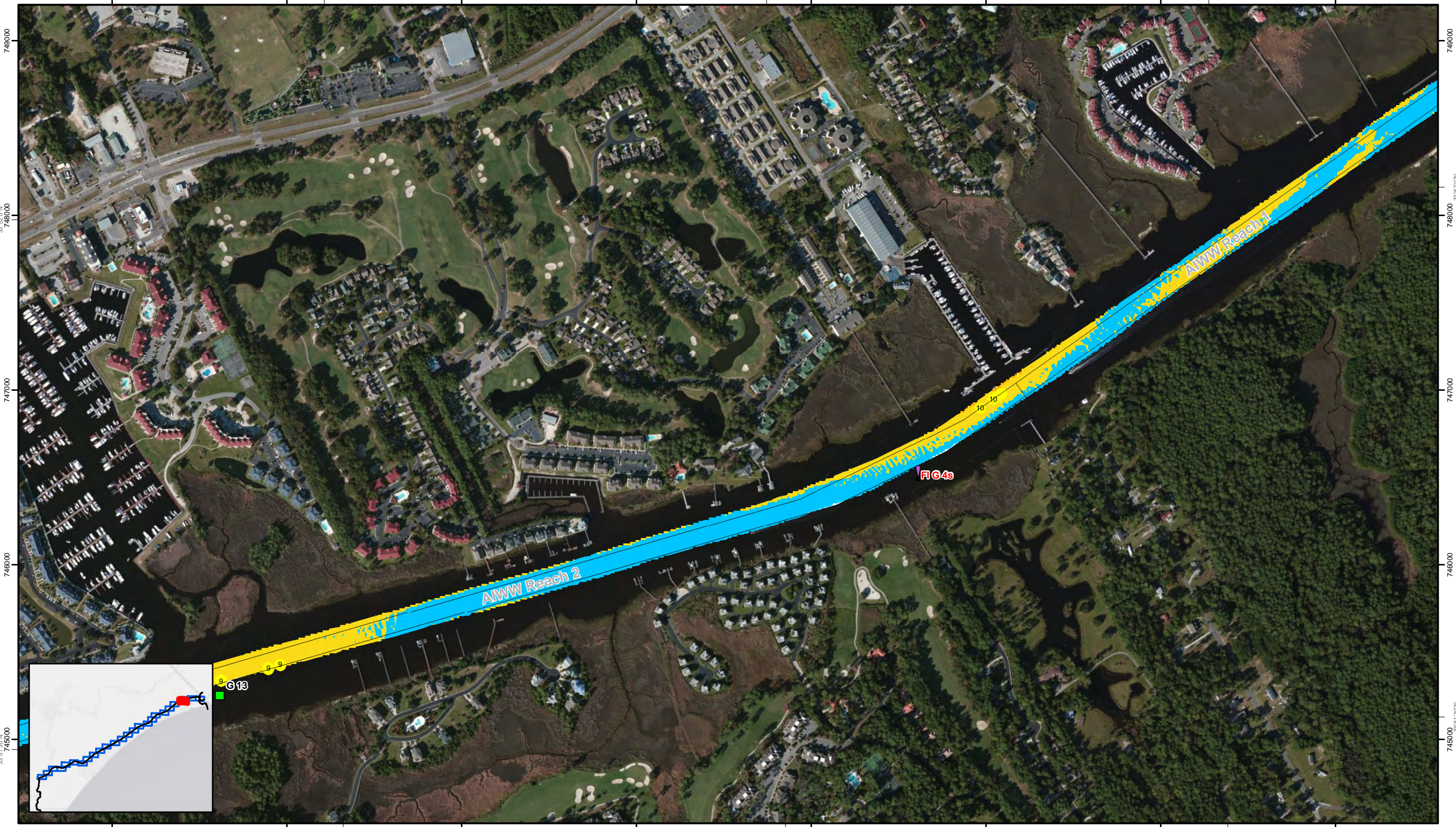


**Production Notes:**  
1. The information depicted on this product is for plotting purposes only.  
2. Vector hydrographic data derived from surveys conducted by the USACE and approved partners.  
3. Soundings are in feet and refer to Mean Lower Low Water (MLLW).  
4. Raster Background: ArcGIS Online Imagery Basemap.

In no event shall the U.S. Army Corps of Engineers, Charleston District Office, Spatial Data Branch be liable for direct, indirect, incidental, consequential or special damages of any kind, including, but not limited to, loss of anticipated profits or benefits arising out of use of or reliance on the data.  
These data sets have been developed from the best available sources. Although efforts have been made to ensure that the datasets are accurate and reliable, errors and variable conditions originating from physical sources used to develop the data may be reflected in the data supplied.  
**This product is not intended to be used for navigation.**  
Mariners are encouraged to use all prudent safety measures.



2717000 2718000 2719000 2720000 2721000 2722000 2723000 2724000



U.S. ARMY ENGINEER DISTRICT  
CORPS OF ENGINEERS  
CHARLESTON, SOUTH CAROLINA

SPATIAL DATA BRANCH  
69A HAGOOD AVE  
CHARLESTON, SC 29403  
CESAC-GIS@USACE.ARMY.MIL

Atlantic Intercoastal Waterway (AIWW)  
Channel Survey

The information depicted on this map represents the results of surveys made on the dates indicated and can only be considered as indicating the general conditions existing at that time.

Conducted on: **04 November 2014**

Little River, SC to Bucksport, SC

Designed by: <b>eHydro Software v3.6.1</b>	Design date: <b>11 Dec 2014</b>	Export date: <b>11 Dec 2014</b>
Reviewed by: <b>J. West</b>	Absolute scale: <b>1:6,000</b>	Project Reference Number: <b>CESAC-PR-001</b>
Reference scale: <b>1 inch = 500 feet</b>	Survey Type: <b>Multi-beam Condition Survey</b>	
Projection: <b>NAD 1983 StatePlane South Carolina FIPS 3900 Feet</b>		

**Shoalest Sounding**

● Sounding

Sounding may cover several point areas and is calculated per reach quarter area  
"±" indicates sounding above MLLW

**USCG Beacon**

■ Green  
▲ Red  
□ White

**USCG Buoy**

● Green  
● Red  
● Coast Guard Racon

○ White  
○ Yellow  
○ USCG Light

**Depth in feet**

■ Less than 3   ■ 3 to 6   ■ 6 to 9   ■ 9 to 12   ■ Greater than 12

0 250 500 1,000 1,500 Feet



**Production Notes:**

- The information depicted on this product is for plotting purposes only.
- Vector hydrographic data derived from surveys conducted by the USACE and approved partners.
- Soundings are in feet and refer to Mean Lower Low Water (MLLW).
- Raster Background: ArcGIS Online Imagery Basemap.

In no event shall the U.S. Army Corps of Engineers, Charleston District Office, Spatial Data Branch be liable for direct, indirect, incidental, consequential or special damages of any kind, including, but not limited to, loss of anticipated profits or benefits arising out of use of or reliance on the data.

These data sets have been developed from the best available sources. Although efforts have been made to ensure that the datasets are accurate and reliable, errors and variable conditions originating from physical sources used to develop the data may be reflected in the data supplied.

This product is not intended to be used for navigation. Mariners are encouraged to use all prudent safety measures.



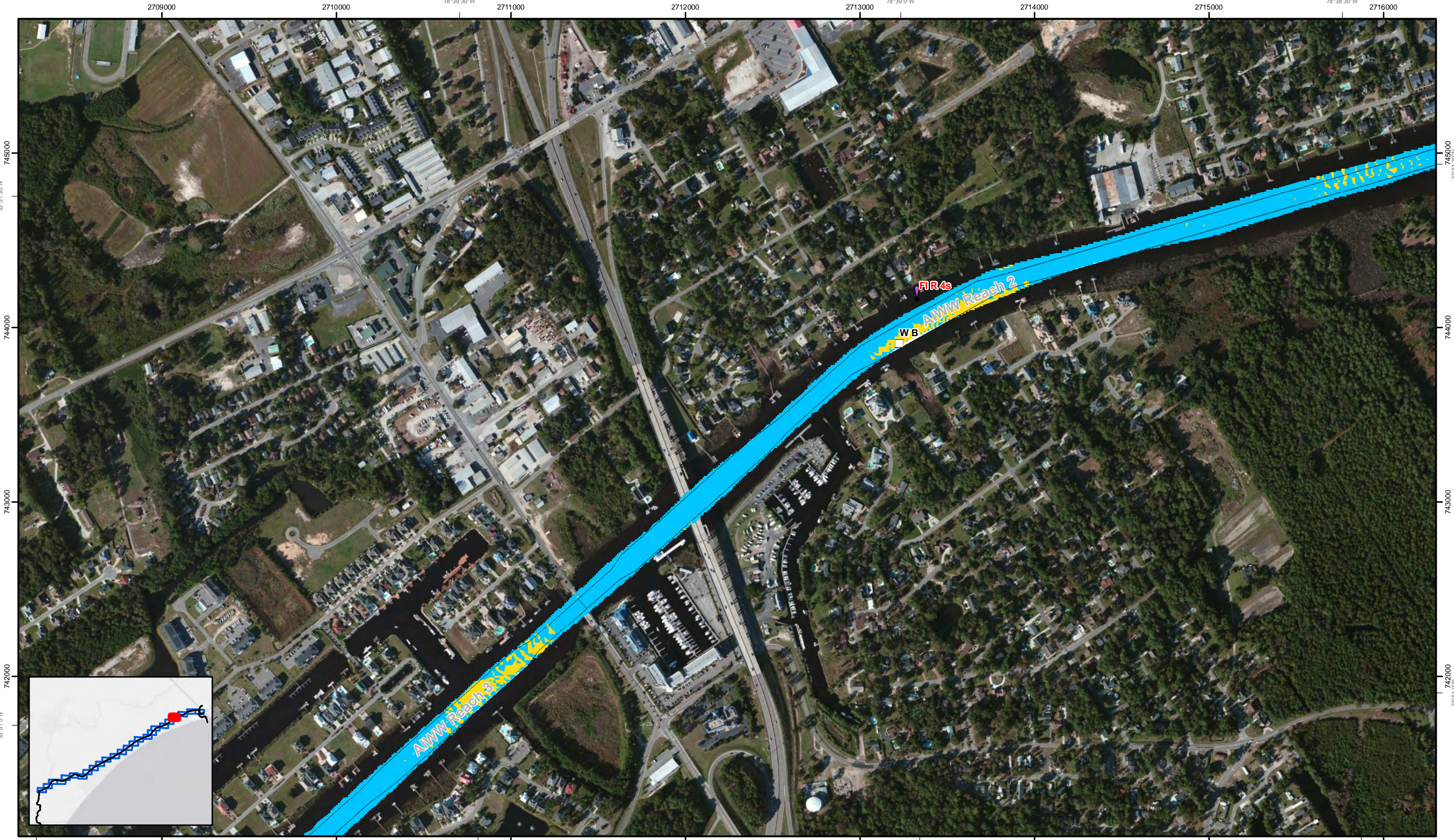
SHEET  
REFERENCE  
NUMBER  
C003  
Page 3 of 25

749000 748000 747000 746000 745000

749000 748000 747000 746000 745000

2717000 2718000 2719000 2720000 2721000 2722000 2723000 2724000

2709000 2710000 2711000 2712000 2713000 2714000 2715000 2716000



745000 744000 743000 742000

745000 744000 743000 742000



78°40'0"W 2709000 2710000 2711000 2712000 2713000 2714000 2715000 2716000

78°39'30"W

78°39'0"W

78°38'30"W

33°51'30"N

33°51'0"N

33°51'30"N

33°51'0"N

Atlantic Intercoastal Waterway (AIWW) Channel Survey

The information depicted on this map represents the results of surveys made on the dates indicated and can only be considered as indicating the general conditions existing at that time.

Conducted on: 04 November 2014

Little River, SC to Bucksport, SC

SHEET REFERENCE NUMBER C003

Page 4 of 25

U.S. ARMY ENGINEER DISTRICT CORPS OF ENGINEERS CHARLESTON, SOUTH CAROLINA	Designed by: eHydro Software v3.6.1	Design date: 11 Dec 2014	Export date: 11 Dec 2014
SPATIAL DATA BRANCH 69A HAGOOD AVE CHARLESTON, SC 29403 CESAC-GIS@USACE.ARMY.MIL	Reviewed by: J. West	Absolute scale: 1:6,000	Project Reference Number: CESAC-PR-001
	Reference scale: 1 inch = 500 feet	Survey Type: Multi-beam Condition Survey	
	Projection: NAD 1983 StatePlane South Carolina FIPS 3900 Feet		

**Shoalest Sounding**

● Sounding

Sounding may cover several point areas and is calculated per reach quarter area

"+" indicates sounding above MLLW

**USCG Beacon**

● Green

● Red

● White

**USCG Buoy**

● Green

● Red

● Coast Guard Racon

● White

● Yellow

● USCG Light

**Depth in feet**

■ Less than 3

■ 3 to 6

■ 6 to 9

■ 9 to 12

■ Greater than 12

0 250 500 1,000 1,500 Feet



**Production Notes:**

- The information depicted on this product is for plotting purposes only.
- Vector hydrographic data derived from surveys conducted by the USACE and approved partners.
- Soundings are in feet and refer to Mean Lower Low Water (MLLW).
- Raster Background: ArcGIS Online Imagery Basemap.

In no event shall the U.S. Army Corps of Engineers, Charleston District Office, Spatial Data Branch be liable for direct, indirect, incidental, consequential or special damages of any kind, including, but not limited to, loss of anticipated profits or benefits arising out of use of or reliance on the data.

These data sets have been developed from the best available sources. Although efforts have been made to ensure that the datasets are accurate and reliable, errors and variable conditions originating from physical sources used to develop the data may be reflected in the data supplied.

This product is not intended to be used for navigation. Mariners are encouraged to use all prudent safety measures.



2704000 2705000 2706000 2707000 2708000 2709000 2710000 2711000



2704000 2705000 2706000 2707000 2708000 2709000 2710000 2711000

SHEET REFERENCE NUMBER <b>C003</b> Page 5 of 25	<b>Atlantic Intercoastal Waterway (AIWW) Channel Survey</b> The information depicted on this map represents the results of surveys made on the dates indicated and can only be considered as indicating the general conditions existing at that time. Conducted on: <b>04 November 2014</b> Little River, SC to Bucksport, SC	Designed by: <b>eHydro Software v3.6.1</b> Reviewed by: <b>J. West</b> Reference scale: <b>1 inch = 500 feet</b> Projection: <b>NAD 1983 StatePlane South Carolina FIPS 3900 Feet</b>	Design date: <b>11 Dec 2014</b> Export date: <b>11 Dec 2014</b> Project Reference Number: <b>CESAC-PRA-0001</b> Survey Type: <b>Multi-beam Condition Survey</b>	
	U.S. ARMY ENGINEER DISTRICT CORPS OF ENGINEERS CHARLESTON, SOUTH CAROLINA	Absolute scale: <b>1:6,000</b> Project Reference Number: <b>CESAC-PRA-0001</b> Survey Type: <b>Multi-beam Condition Survey</b>	SPATIAL DATA BRANCH 69A HAGOOD AVE CHARLESTON, SC 29403 CESAC-GIS@USACE.ARMY.MIL	U.S. Army Corps of Engineers Charleston District

**Shoalest Sounding**

- Sounding
- Sounding may cover several point areas and is calculated per reach quarter area
- "+" indicates sounding above MLLW

**USCG Beacon**

- Green
- Red
- White

**USCG Buoy**

- Green
- Red
- Coast Guard Racon

**USCG Light**

- White
- Yellow
- USCG Light

**Depth in feet**

- Less than 3
- 3 to 6
- 6 to 9
- 9 to 12
- Greater than 12

0 250 500 1,000 1,500 Feet

**Production Notes:**

- The information depicted on this product is for plotting purposes only.
- Vector hydrographic data derived from surveys conducted by the USACE and approved partners.
- Soundings are in feet and refer to Mean Lower Low Water (MLLW).
- Raster Background: ArcGIS Online Imagery Basemap.

In no event shall the U.S. Army Corps of Engineers, Charleston District Office, Spatial Data Branch be liable for direct, indirect, incidental, consequential or special damages of any kind, including, but not limited to, loss of anticipated profits or benefits arising out of use of or reliance on the data.

These data sets have been developed from the best available sources. Although efforts have been made to ensure that the datasets are accurate and reliable, errors and variable conditions originating from physical sources used to develop the data may be reflected in the data supplied.

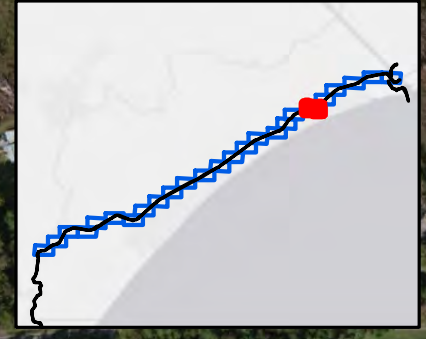
This product is not intended to be used for navigation. Mariners are encouraged to use all prudent safety measures.

78°42'0"W 2699000 2700000 2701000 2702000 2703000 2704000 2705000 2706000 78°40'30"W



737000  
736000  
735000  
734000  
733000

737000  
736000  
735000  
734000  
733000



78°42'0"W 2699000 2700000 2701000 2702000 2703000 2704000 2705000 2706000 78°41'30"W

**Atlantic Intercoastal Waterway (AIWW) Channel Survey**

The information depicted on this map represents the results of surveys made on the dates indicated and can only be considered as indicating the general conditions existing at that time.

Conducted on: **04 November 2014**

Little River, SC to Bucksport, SC

U.S. ARMY ENGINEER DISTRICT CORPS OF ENGINEERS CHARLESTON, SOUTH CAROLINA	Designed by: <b>eHydro Software v3.6.1</b>	Design date: <b>11 Dec 2014</b>	Export date: <b>11 Dec 2014</b>
SPATIAL DATA BRANCH 69A HAGOOD AVE CHARLESTON, SC 29403 CESAC-GIS@USACE.ARMY.MIL	Reviewed by: <b>J. West</b>	Absolute scale: <b>1:6,000</b>	Project Reference Number: <b>CESAC-PRA-001</b>
	Reference scale: <b>1 inch = 500 feet</b>	Survey Type: <b>Multi-beam Condition Survey</b>	
	Projection: <b>NAD 1983 StatePlane South Carolina FIPS 3900 Feet</b>		

**Shoalest Sounding**

● Sounding

Sounding may cover several point areas and is calculated per reach quarter area

"+" indicates sounding above MLLW

**USCG Beacon**

■ Green

▲ Red

□ White

**USCG Buoy**

● Green

● Red

● Coast Guard Racon

● USCG Light

**Depth in feet**

■ Less than 3

■ 3 to 6

■ 6 to 9

■ 9 to 12

■ Greater than 12

0 250 500 1,000 1,500 Feet



**Production Notes:**

- The information depicted on this product is for plotting purposes only.
- Vector hydrographic data derived from surveys conducted by the USACE and approved partners.
- Soundings are in feet and refer to Mean Lower Low Water (MLLW).
- Raster Background: ArcGIS Online Imagery Basemap.

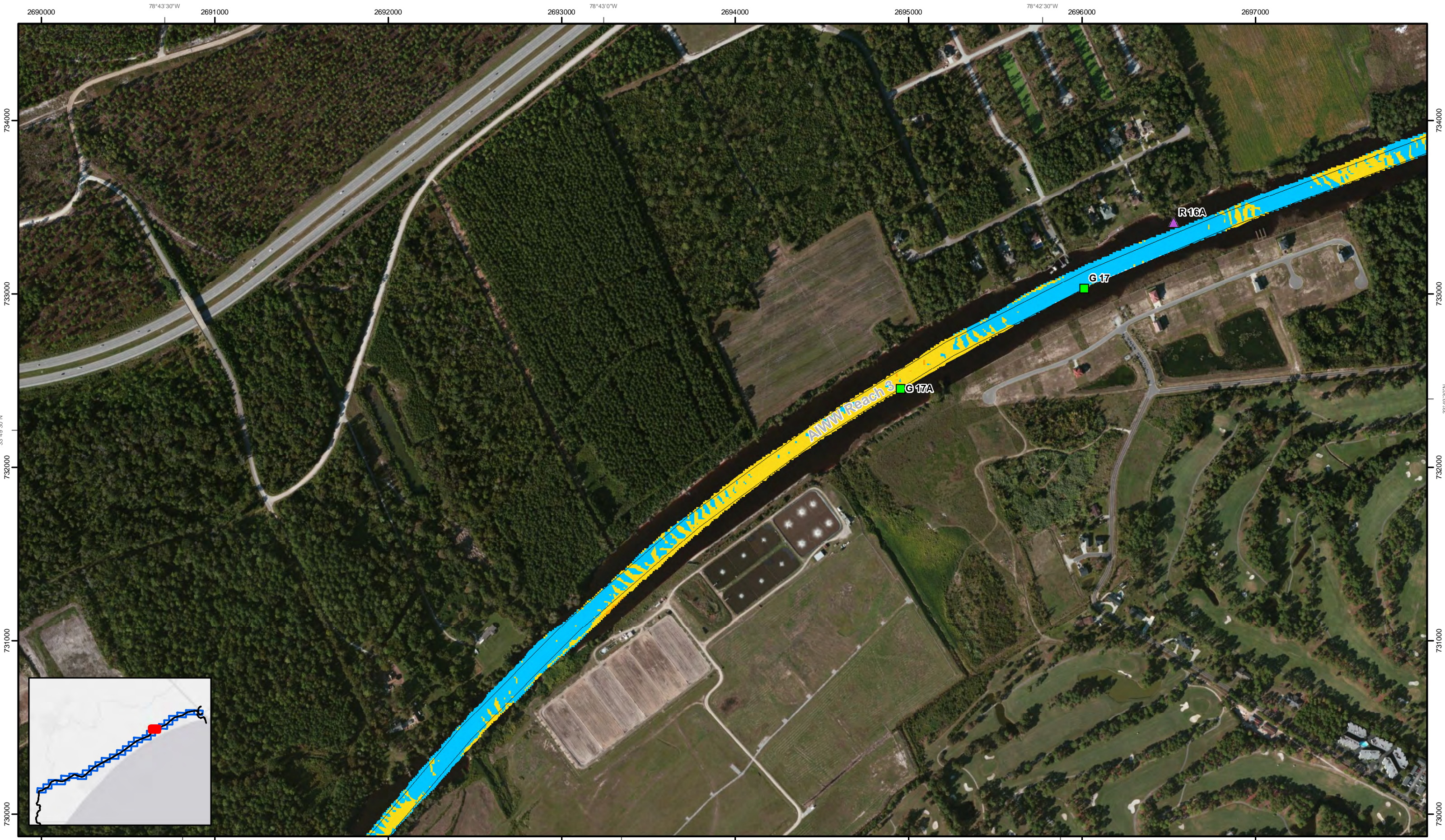
In no event shall the U.S. Army Corps of Engineers, Charleston District Office, Spatial Data Branch be liable for direct, indirect, incidental, consequential or special damages of any kind, including, but not limited to, loss of anticipated profits or benefits arising out of use of or reliance on the data.

These data sets have been developed from the best available sources. Although efforts have been made to ensure that the data sets are accurate and reliable, errors and variable conditions originating from physical sources used to develop the data may be reflected in the data supplied.

This product is not intended to be used for navigation. Mariners are encouraged to use all prudent safety measures.



SHEET  
REFERENCE  
NUMBER  
C003  
Page 6 of 25



SHEET  
 REFERENCE  
 NUMBER  
**C003**  
 Page 7 of 25

**Atlantic Intercoastal Waterway (AIWW) Channel Survey**  
 The information depicted on this map represents the results of surveys made on the dates indicated and can only be considered as indicating the general conditions existing at that time.  
 Conducted on: **04 November 2014**  
 Little River, SC to Bucksport, SC

U.S. ARMY ENGINEER DISTRICT CORPS OF ENGINEERS CHARLESTON, SOUTH CAROLINA  SPATIAL DATA BRANCH 69A HAGOOD AVE CHARLESTON, SC 29403 CESAC-GIS@USACE.ARMY.MIL	Designed by: <b>eHydro Software v3.6.1</b> Reviewed by: <b>J. West</b> Reference scale: <b>1 inch = 500 feet</b> Projection: <b>NAD 1983 StatePlane South Carolina FIPS 3900 Feet</b>	Design date: <b>11 Dec 2014</b> Export date: <b>11 Dec 2014</b> Project Reference Number: <b>CESAC-PR-001</b> Survey Type: <b>Multi-beam Condition Survey</b>
--	--	--

**Shoalest Sounding**  
 Sounding may cover several point areas and is calculated per reach quarter area  
 "+" indicates sounding above MLLW

<b>USCG Beacon</b> Green Red White	<b>USCG Buoy</b> Green Red Coast Guard Racon	White Yellow USCG Light
---	---	-------------------------------

**Depth in feet**  
 Less than 3    3 to 6    6 to 9    9 to 12    Greater than 12

**Production Notes:**  
 1. The information depicted on this product is for plotting purposes only.  
 2. Vector hydrographic data derived from surveys conducted by the USACE and approved partners.  
 3. Soundings are in feet and refer to Mean Lower Low Water (MLLW).  
 4. Raster Background: ArcGIS Online Imagery Basemap.

In no event shall the U.S. Army Corps of Engineers, Charleston District Office, Spatial Data Branch be liable for direct, indirect, incidental, consequential or special damages of any kind, including, but not limited to, loss of anticipated profits or benefits arising out of use of or reliance on the data. These data sets have been developed from the best available sources. Although efforts have been made to ensure that the datasets are accurate and reliable, errors and variable conditions originating from physical sources used to develop the data may be reflected in the data supplied. This product is not intended to be used for navigation. Mariners are encouraged to use all prudent safety measures.

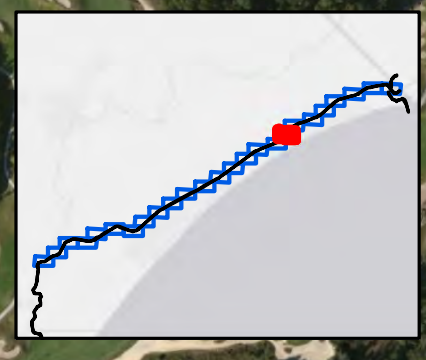
2687000 2688000 2689000 2690000 2691000 2692000 2693000 2694000



2687000 2688000 2689000 2690000 2691000 2692000 2693000 2694000

730000  
729000  
728000  
727000  
726000

730000  
729000  
728000  
727000  
726000



SHEET REFERENCE NUMBER <b>C003</b> Page 8 of 25	<b>Atlantic Intercoastal Waterway (AIWW) Channel Survey</b> The information depicted on this map represents the results of surveys made on the dates indicated and can only be considered as indicating the general conditions existing at that time. Conducted on: <b>04 November 2014</b> Little River, SC to Bucksport, SC	U.S. ARMY ENGINEER DISTRICT CORPS OF ENGINEERS CHARLESTON, SOUTH CAROLINA  SPATIAL DATA BRANCH 69A HAGOOD AVE CHARLESTON, SC 29403 CESAC-GIS@USACE.ARMY.MIL	Designed by: <b>eHydro Software v3.6.1</b> Reviewed by: <b>J. West</b> Reference scale: <b>1 inch = 500 feet</b> Projection: <b>NAD 1983 StatePlane South Carolina FIPS 3900 Feet</b>	Design date: <b>11 Dec 2014</b> Export date: <b>11 Dec 2014</b> Project Reference Number: <b>CESAC-PRA-0001</b> Survey Type: <b>Multi-beam Condition Survey</b>
---	--	--	--	--

**Shoalest Sounding**

- Yellow circle: Sounding
- Green square: USCG Beacon
- Green triangle: USCG Buoy
- White circle: White
- Yellow circle: Yellow
- White circle: White
- Purple circle: Coast Guard Racon
- Purple circle: USCG Light

Sounding may cover several point areas and is calculated per reach quarter area  
 "+" indicates sounding above MLLW

**Depth in feet**

- Red: Less than 3
- Orange: 3 to 6
- Yellow: 6 to 9
- Light Blue: 9 to 12
- Dark Blue: Greater than 12

0 250 500 1,000 1,500 Feet

**Production Notes:**

- The information depicted on this product is for plotting purposes only.
- Vector hydrographic data derived from surveys conducted by the USACE and approved partners.
- Soundings are in feet and refer to Mean Lower Low Water (MLLW).
- Raster Background: ArcGIS Online Imagery Basemap.

In no event shall the U.S. Army Corps of Engineers, Charleston District Office, Spatial Data Branch be liable for direct, indirect, incidental, consequential or special damages of any kind, including, but not limited to, loss of anticipated profits or benefits arising out of use of or reliance on the data.

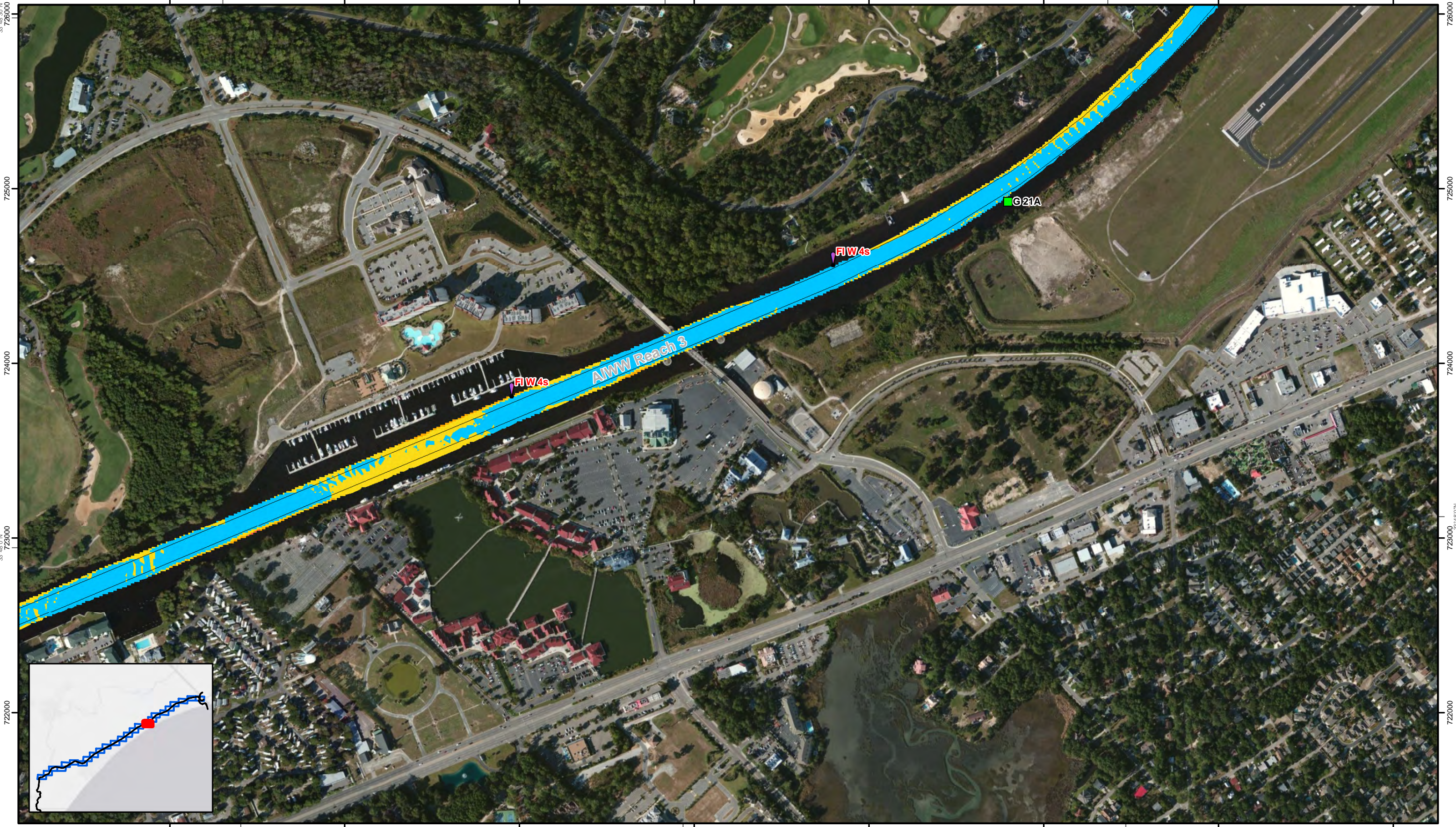
These data sets have been developed from the best available sources. Although efforts have been made to ensure that the datasets are accurate and reliable, errors and variable conditions originating from physical sources used to develop the data may be reflected in this data supplied.

This product is not intended to be used for navigation. Mariners are encouraged to use all prudent safety measures.



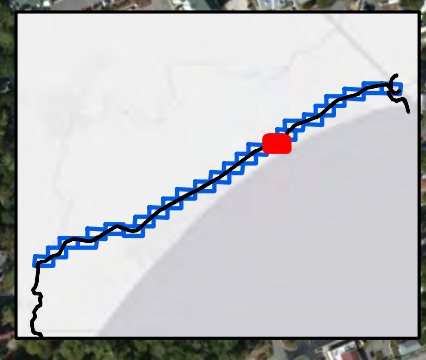


2683000 78°45'0"W 2684000 2685000 2686000 2687000 2688000 2689000 2690000



726000  
725000  
724000  
723000  
722000

726000  
725000  
724000  
723000  
722000



Atlantic Intercoastal Waterway (AIWW) Channel Survey  
 The information depicted on this map represents the results of surveys made on the dates indicated and can only be considered as indicating the general conditions existing at that time.  
 Conducted on: 04 November 2014  
 Little River, SC to Bucksport, SC

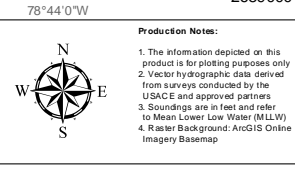
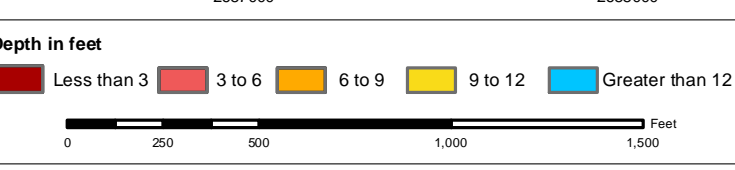
U.S. ARMY ENGINEER DISTRICT CORPS OF ENGINEERS CHARLESTON, SOUTH CAROLINA	Designed by: eHydro Software v3.6.1	Design date: 11 Dec 2014	Export date: 11 Dec 2014
Reviewed by: J. West	Absolute scale: 1:6,000	Project Reference Number: CESAC-PR-001	Survey Type: Multi-beam Condition Survey
SPATIAL DATA BRANCH 69A HAGOOD AVE CHARLESTON, SC 29403 CESAC-GIS@USACE.ARMY.MIL	Reference scale: 1 inch = 500 feet	Projection: NAD 1983 StatePlane South Carolina FIPS 3900 Feet	

**Shoalest Sounding**  
 Sounding may cover several point areas and is calculated per reach quarter area  
 "+" indicates sounding above MLLW

**USCG Beacon**  
 Green  
 Red  
 White

**USCG Buoy**  
 Green  
 Red  
 Coast Guard Racon

**White**  
 USCG Light



**Production Notes:**  
 1. The information depicted on this product is for plotting purposes only.  
 2. Vector hydrographic data derived from surveys conducted by the USACE and approved partners.  
 3. Soundings are in feet and refer to Mean Lower Low Water (MLLW).  
 4. Raster Background: ArcGIS Online Imagery Basemap.

In no event shall the U.S. Army Corps of Engineers, Charleston District Office, Spatial Data Branch be liable for direct, indirect, incidental, consequential or special damages of any kind, including, but not limited to, loss of anticipated profits or benefits arising out of use of or reliance on the data.  
 These data sets have been developed from the best available sources. Although efforts have been made to ensure that the datasets are accurate and reliable, errors and variable conditions originating from physical sources used to develop the data may be reflected in the data supplied.  
 This product is not intended to be used for navigation.  
 Mariners are encouraged to use all prudent safety measures.



SHEET REFERENCE NUMBER C003 Page 9 of 25



2674000 2675000 2676000 2677000 2678000 2679000 2680000 2681000

723000 722000 721000 720000 719000

33°48'0"N 33°46'0"N

723000 722000 721000 720000 719000

33°47'30"N 33°47'30"N

720000 719000

2674000 2675000 2676000 2677000 2678000 2679000 2680000 2681000

723000 722000 721000 720000 719000

33°46'30"W 33°46'30"W

723000 722000 721000 720000 719000

33°46'0"N 33°46'0"N

722000 721000 720000 719000

33°45'30"N 33°45'30"N

721000 720000 719000

2674000 2675000 2676000 2677000 2678000 2679000 2680000 2681000

720000 719000

33°47'30"N 33°47'30"N

720000 719000

2674000 2675000 2676000 2677000 2678000 2679000 2680000 2681000

723000 722000 721000 720000 719000

33°46'30"W 33°46'30"W

723000 722000 721000 720000 719000

33°46'0"N 33°46'0"N

722000 721000 720000 719000

2674000 2675000 2676000 2677000 2678000 2679000 2680000 2681000

720000 719000

33°47'30"N 33°47'30"N

720000 719000

2674000 2675000 2676000 2677000 2678000 2679000 2680000 2681000

723000 722000 721000 720000 719000

33°46'30"W 33°46'30"W

723000 722000 721000 720000 719000

SHEET  
REFERENCE  
NUMBER  
C003  
Page 1 of 25

**Atlantic Intercoastal Waterway (AIWW)  
Channel Survey**  
The information depicted on this map represents the  
results of surveys made on the dates indicated and  
can only be considered as indicating the general  
conditions existing at that time.  
Conducted on: **04 November 2014**  
Little River, SC to Bucksport, SC

U.S. ARMY ENGINEER DISTRICT  
CORPS OF ENGINEERS  
CHARLESTON, SOUTH CAROLINA  
  
SPATIAL DATA BRANCH  
69A HAGOOD AVE  
CHARLESTON, SC 29403  
CESAC-GIS@USACE.ARMY.MIL

Designed by: <b>eHydro Software v3.6.1</b>	Design date: <b>11 Dec 2014</b>	Export date: <b>11 Dec 2014</b>
Reviewed by: <b>J. West</b>	Absolute scale: <b>1:6,000</b>	Project Reference Number: <b>CESAC-PR-001</b>
Reference scale: <b>1 inch = 500 feet</b>	Survey Type: <b>Multi-beam Condition Survey</b>	
Projection: <b>NAD 1983 StatePlane South Carolina FIPS 3900 Feet</b>		

**Shoalest Sounding**  
Sounding may cover several  
point areas and is calculated  
per reach quarter area  
"+" indicates sounding above MLLW

USCG Beacon  
Green  
Red  
White

USCG Buoy  
Green  
Red  
Coast Guard Racon

White  
Yellow  
USCG Light

**Depth in feet**

Less than 3	3 to 6	6 to 9	9 to 12	Greater than 12
-------------	--------	--------	---------	-----------------

0 250 500 1,000 1,500 Feet

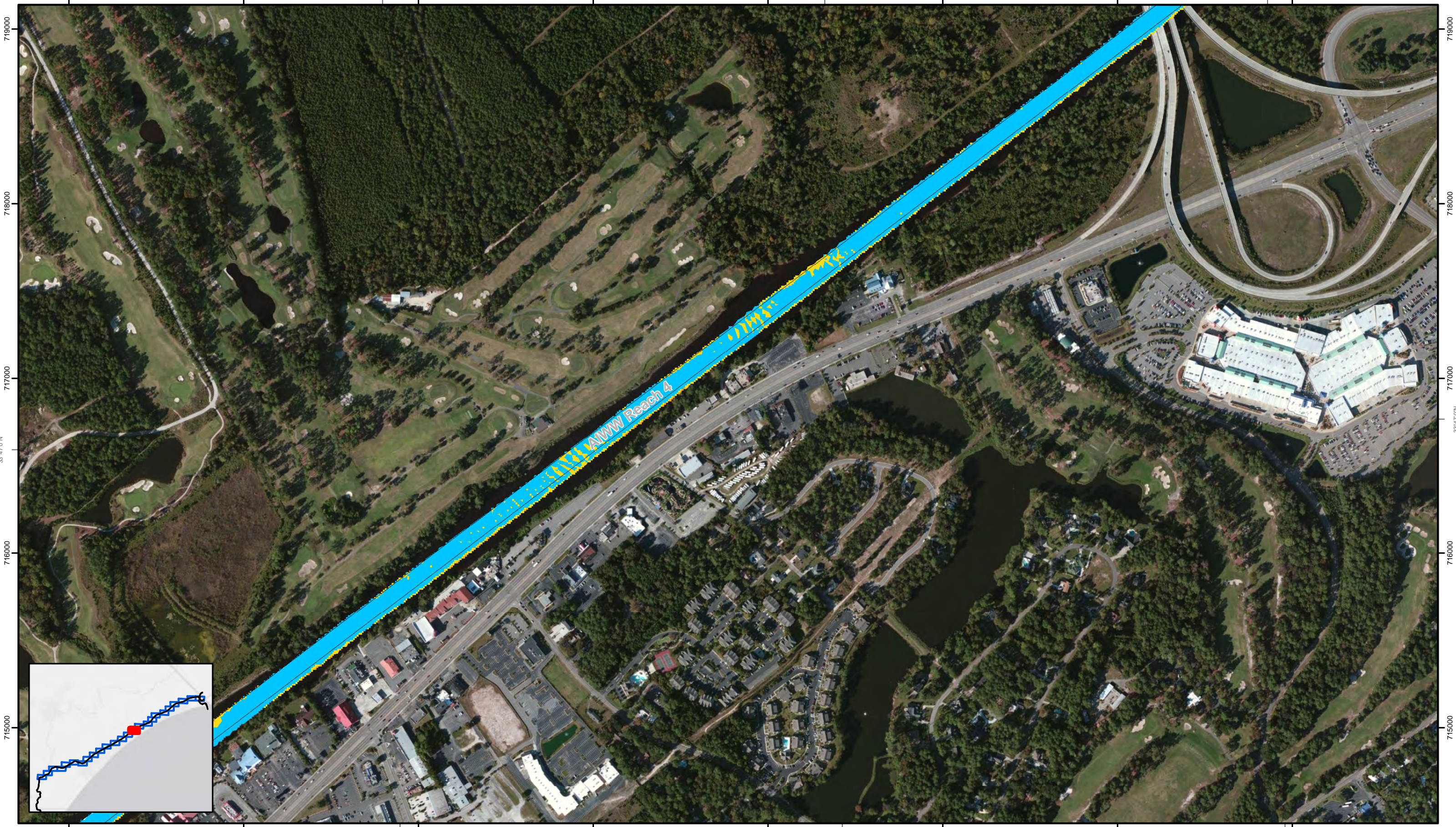


**Production Notes:**  
1. The information depicted on this  
product is for plotting purposes only  
2. Vector hydrographic data derived  
from surveys conducted by the  
USACE and approved partners  
3. Soundings are in feet and refer  
to Mean Lower Low Water (MLLW)  
4. Raster Background: ArcGIS Online  
Imagery Basemap  
  
In no event shall the U.S. Army Corps of Engineers, Charleston  
District Office, Spatial Data Branch be liable for direct, indirect,  
incidental, consequential or special damages of any kind, including,  
but not limited to, loss of anticipated profits or benefits arising out of  
use of or reliance on the data.  
These data sets have been developed from the best available  
sources. Although efforts have been made to ensure that the  
datasets are accurate and reliable, errors and variable conditions  
originating from physical sources used to develop the data may be  
reflected in the data supplied.  
This product is not intended to be used for navigation.  
Mariners are encouraged to use all prudent safety measures.

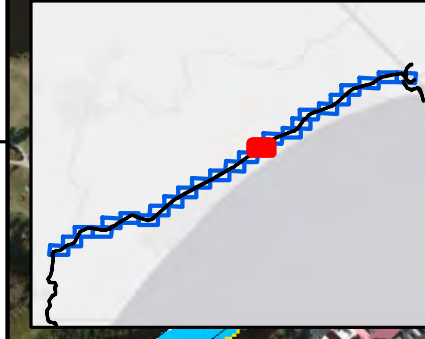


U.S. Army Corps  
of Engineers  
Charleston District

2669000 2670000 2671000 2672000 2673000 2674000 2675000 2676000 78°47'30"W 78°47'0"W 78°46'30"W



715000 716000 717000 718000 719000 33°47'0"N 33°47'0"N



2669000 2670000 2671000 2672000 2673000 2674000 2675000 2676000 78°47'30"W 78°47'0"W 78°46'30"W

SHEET  
REFERENCE  
NUMBER  
C003  
Page 11 of 25

**Atlantic Intercoastal Waterway (AIWW)  
Channel Survey**  
The information depicted on this map represents the results of surveys made on the dates indicated and can only be considered as indicating the general conditions existing at that time.  
Conducted on: **04 November 2014**  
Little River, SC to Bucksport, SC

U.S. ARMY ENGINEER DISTRICT  
CORPS OF ENGINEERS  
CHARLESTON, SOUTH CAROLINA  
SPATIAL DATA BRANCH  
69A HAGOOD AVE  
CHARLESTON, SC 29403  
CESAC-GIS@USACE.ARMY.MIL

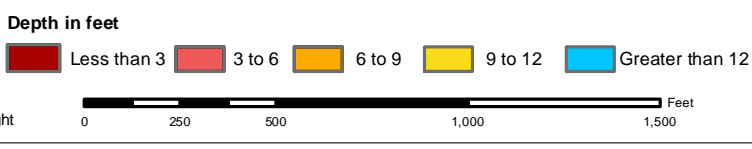
Designed by: <b>eHydro Software v3.6.1</b>	Design date: <b>11 Dec 2014</b>	Export date: <b>11 Dec 2014</b>
Reviewed by: <b>J. West</b>	Absolute scale: <b>1:6,000</b>	Project Reference Number: <b>CESAC-PRA-001</b>
Reference scale: <b>1 inch = 500 feet</b>	Survey Type: <b>Multi-beam Condition Survey</b>	
Projection: <b>NAD 1983 StatePlane South Carolina FIPS 3900 Feet</b>		

**Shoalest Sounding**  
● Sounding  
Sounding may cover several point areas and is calculated per reach quarter area  
"±" indicates sounding above MLLW

**USCG Beacon**  
■ Green  
▲ Red  
□ White

**USCG Buoy**  
● Green  
● Red  
● Coast Guard Racon

○ White  
○ Yellow  
○ USCG Light

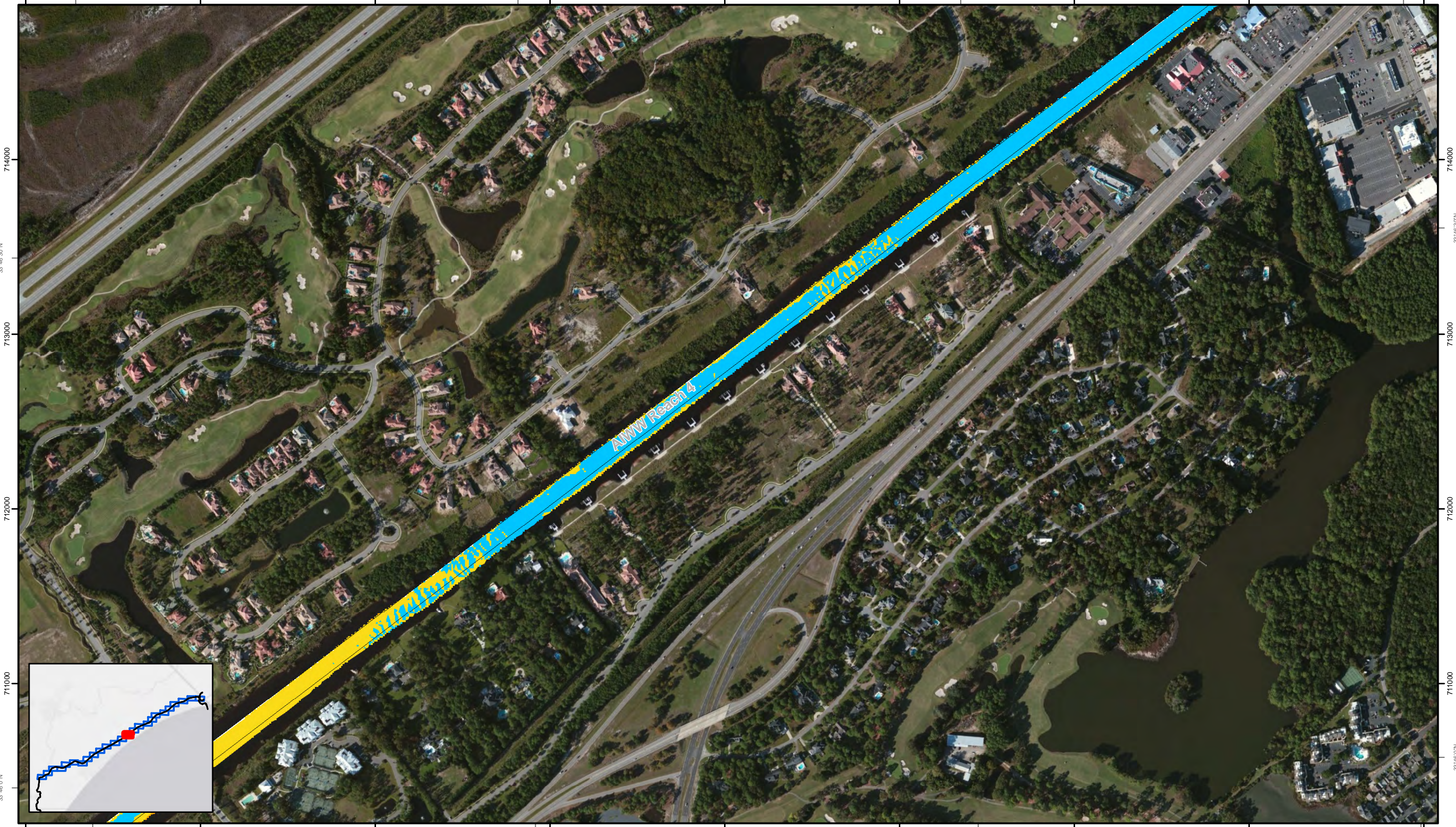


**Production Notes:**  
1. The information depicted on this product is for plotting purposes only.  
2. Vector hydrographic data derived from surveys conducted by the USACE and approved partners.  
3. Soundings are in feet and refer to Mean Lower Low Water (MLLW).  
4. Raster Background: ArcGIS Online Imagery Basemap.  
This product is not intended to be used for navigation. Mariners are encouraged to use all prudent safety measures.

In no event shall the U.S. Army Corps of Engineers, Charleston District Office, Spatial Data Branch be liable for direct, indirect, incidental, consequential or special damages of any kind, including, but not limited to, loss of anticipated profits or benefits arising out of use of or reliance on the data.  
These data sets have been developed from the best available sources. Although efforts have been made to ensure that the datasets are accurate and reliable, errors and variable conditions originating from physical sources used to develop the data may be reflected in the data supplied.  
This product is not intended to be used for navigation. Mariners are encouraged to use all prudent safety measures.



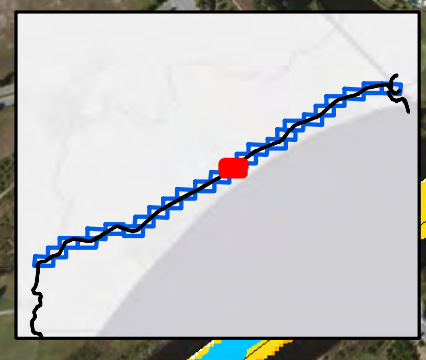
2663000 78°49'0"W 2664000 2665000 78°48'30"W 2666000 2667000 2668000 78°48'0"W 2669000 2670000 2671000 78°47'30"W 2671000



714000  
713000  
712000  
711000

714000  
713000  
712000  
711000

2663000 78°49'0"W 2664000 2665000 2666000 2667000 2668000 78°48'0"W 2669000 2670000 2671000 78°47'30"W 2671000



SHEET  
REFERENCE  
NUMBER  
C003  
Page 12 of 25

**Atlantic Intercoastal Waterway (AIWW)  
Channel Survey**  
The information depicted on this map represents the results of surveys made on the dates indicated and can only be considered as indicating the general conditions existing at that time.  
Conducted on: **04 November 2014**  
Little River, SC to Bucksport, SC

U.S. ARMY ENGINEER DISTRICT  
CORPS OF ENGINEERS  
CHARLESTON, SOUTH CAROLINA  
SPATIAL DATA BRANCH  
69A HAGOOD AVE  
CHARLESTON, SC 29403  
CESAC-GIS@USACE.ARMY.MIL

Designed by: <b>eHydro Software v3.6.1</b>	Design date: <b>11 Dec 2014</b>	Export date: <b>11 Dec 2014</b>
Reviewed by: <b>J. West</b>	Absolute scale: <b>1:6,000</b>	Project Reference Number: <b>CESAC-PR-001</b>
Reference scale: <b>1 inch = 500 feet</b>	Survey Type: <b>Multi-beam Condition Survey</b>	
Projection: <b>NAD 1983 StatePlane South Carolina FIPS 3900 Feet</b>		

**Shoalest Sounding**  
Sounding may cover several point areas and is calculated per reach quarter area  
"±" indicates sounding above MLLW

● Sounding	■ Green	● Green	● White
	■ Red	● Red	● USCG Light
	□ White	● Coast Guard Racon	

**Depth in feet**

● White	● 3 to 6	● 6 to 9	● 9 to 12	● Greater than 12
● Yellow	● Less than 3	● 3 to 6	● 6 to 9	● 9 to 12
● USCG Light				

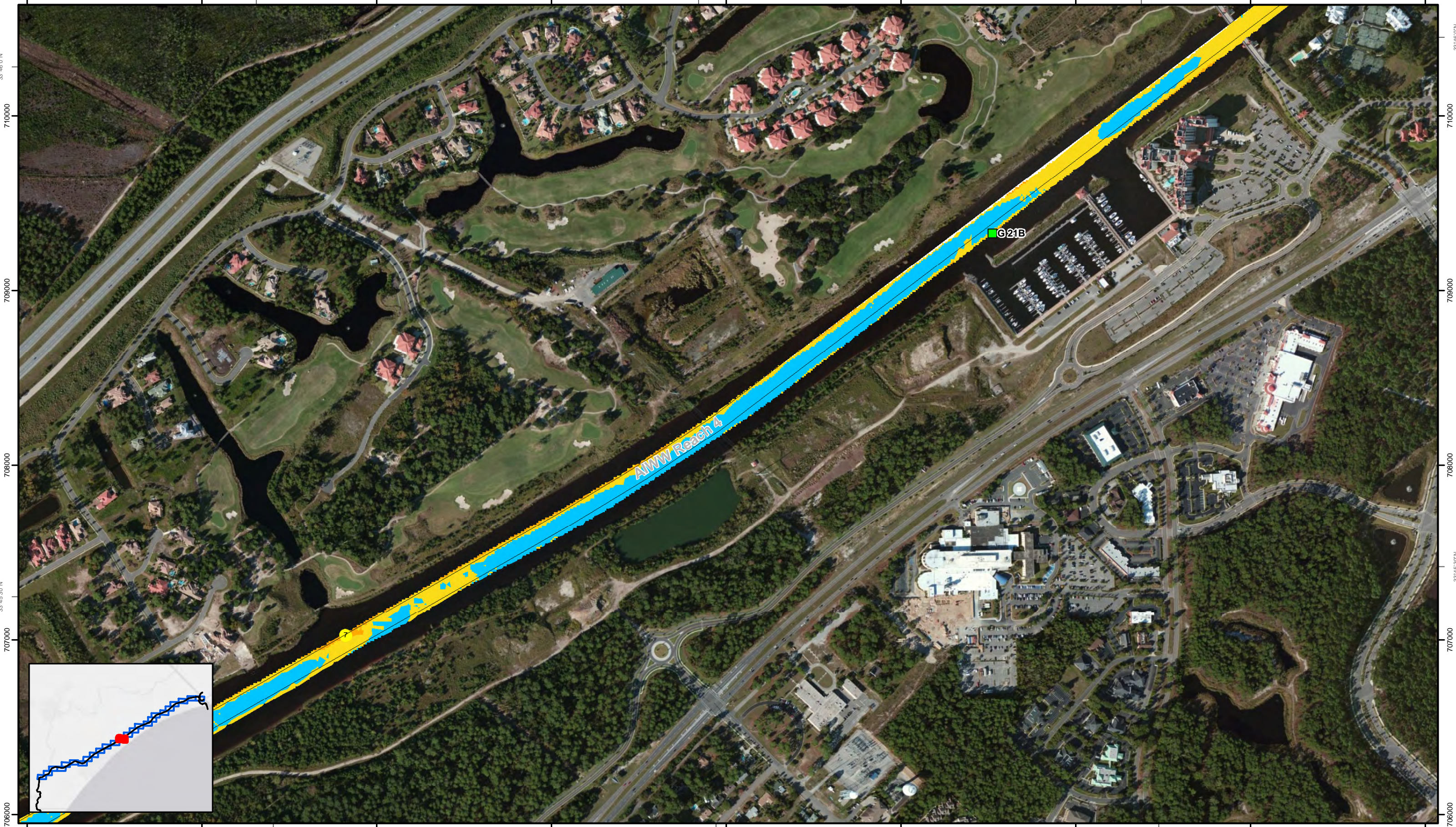
0 250 500 1,000 1,500 Feet



**Production Notes:**  
1. The information depicted on this product is for plotting purposes only.  
2. Vector hydrographic data derived from surveys conducted by the USACE and approved partners.  
3. Soundings are in feet and refer to Mean Lower Low Water (MLLW).  
4. Raster Background: ArcGIS Online Imagery Basemap.  
In no event shall the U.S. Army Corps of Engineers, Charleston District Office, Spatial Data Branch be liable for direct, indirect, incidental, consequential or special damages of any kind, including, but not limited to, loss of anticipated profits or benefits arising out of use of or reliance on the data.  
These data sets have been developed from the best available sources. Although efforts have been made to ensure that the datasets are accurate and reliable, errors and variable conditions originating from physical sources used to develop the data may be reflected in the data supplied.  
This product is not intended to be used for navigation.  
Mariners are encouraged to use all prudent safety measures.



2657000 2658000 2659000 2660000 2661000 2662000 2663000 2664000 2665000



2657000 2658000 2659000 2660000 2661000 2662000 2663000 2664000 2665000

SHEET REFERENCE NUMBER  
C003  
Page 13 of 25

**Atlantic Intercoastal Waterway (AIWW) Channel Survey**  
The information depicted on this map represents the results of surveys made on the dates indicated and can only be considered as indicating the general conditions existing at that time.  
Conducted on: **04 November 2014**  
Little River, SC to Bucksport, SC

U.S. ARMY ENGINEER DISTRICT CORPS OF ENGINEERS CHARLESTON, SOUTH CAROLINA	Designed by: <b>eHydro Software v3.6.1</b>	Design date: <b>11 Dec 2014</b>	Export date: <b>11 Dec 2014</b>
SPATIAL DATA BRANCH 69A HAGOOD AVE CHARLESTON, SC 29403 CESAC-GIS@USACE.ARMY.MIL	Reviewed by: <b>J. West</b>	Absolute scale: <b>1:6,000</b>	Project Reference Number: <b>CESAC-PRA-001</b>
	Reference scale: <b>1 inch = 500 feet</b>	Survey Type: <b>Multi-beam Condition Survey</b>	
	Projection: <b>NAD 1983 StatePlane South Carolina FIPS 3900 Feet</b>		

**Shoalest Sounding**  
● Sounding  
Sounding may cover several point areas and is calculated per reach quarter area  
"±" indicates sounding above MLLW

**USCG Beacon**  
■ Green  
▲ Red  
□ White

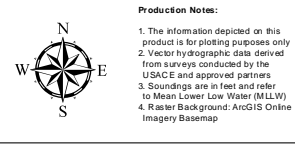
**USCG Buoy**  
● Green  
● Red  
● Coast Guard Racon

○ White  
○ Yellow  
○ USCG Light

**Depth in feet**

Less than 3	3 to 6	6 to 9	9 to 12	Greater than 12
-------------	--------	--------	---------	-----------------

0 250 500 1,000 1,500 Feet



**Production Notes:**  
1. The information depicted on this product is for plotting purposes only.  
2. Vector hydrographic data derived from surveys conducted by the USACE and approved partners.  
3. Soundings are in feet and refer to Mean Lower Low Water (MLLW).  
4. Raster Background: ArcGIS Online Imagery Basemap.

In no event shall the U.S. Army Corps of Engineers, Charleston District Office, Spatial Data Branch be liable for direct, indirect, incidental, consequential or special damages of any kind, including, but not limited to, loss of anticipated profits or benefits arising out of use of or reliance on the data.  
These data sets have been developed from the best available sources. Although efforts have been made to ensure that the datasets are accurate and reliable, errors and variable conditions originating from physical sources used to develop the data may be reflected in the data supplied.  
This product is not intended to be used for navigation.  
Mariners are encouraged to use all prudent safety measures.



78°51'30"W 2651000 2652000 2653000 78°51'0"W 2654000 2655000 78°50'30"W 2656000 2657000 2658000 78°50'0"W

706000

705000

704000

703000

702000

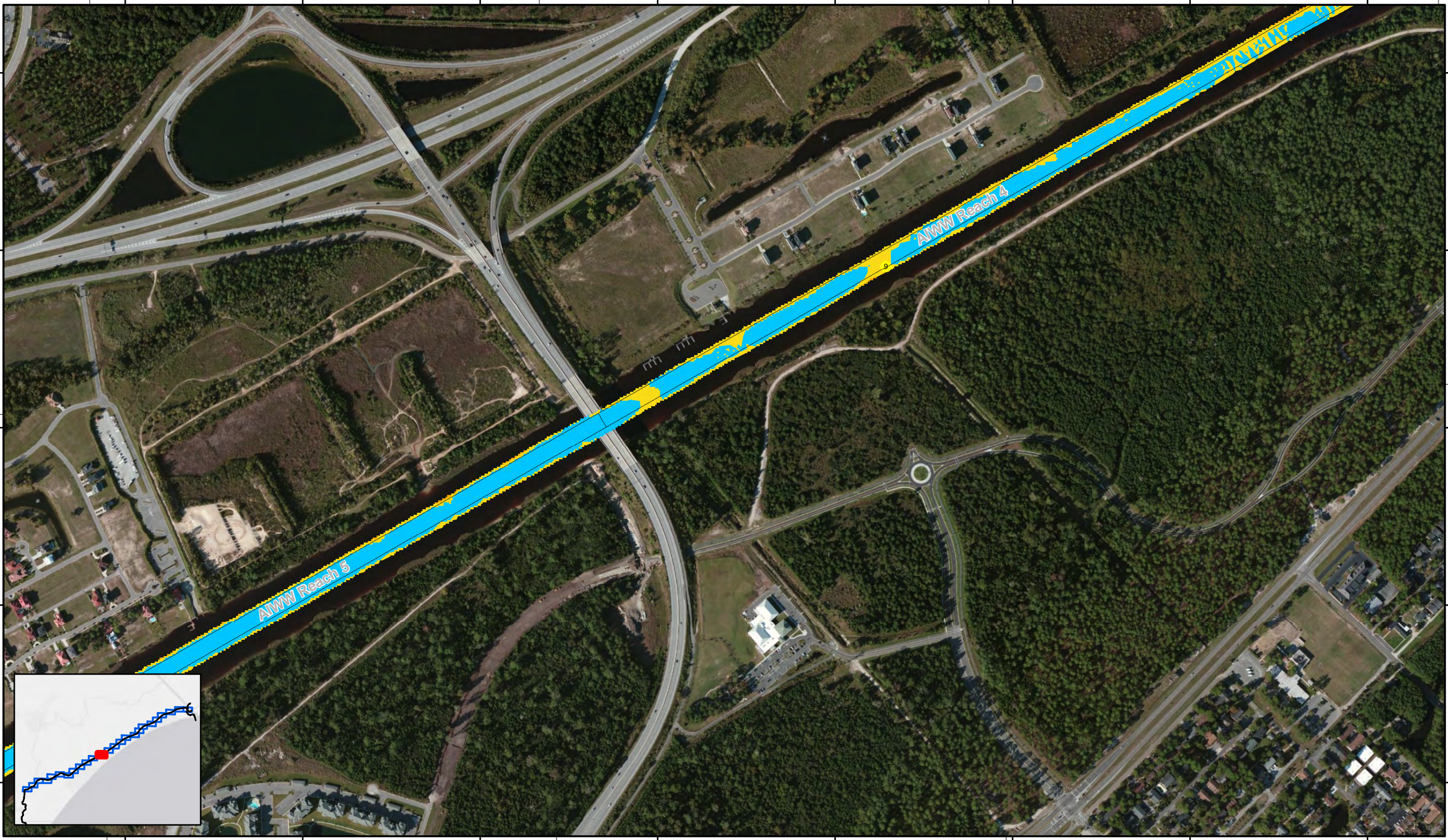
706000

705000

704000

703000

702000



78°51'30"W 2651000 2652000 2653000 78°51'0"W 2654000 2655000 78°50'30"W 2656000 2657000 2658000 78°50'0"W

**Atlantic Intercoastal Waterway (AIWW) Channel Survey**

The information depicted on this map represents the results of surveys made on the dates indicated and can only be considered as indicating the general conditions existing at that time.

Conducted on: **04 November 2014**

Little River, SC to Bucksport, SC

U.S. ARMY ENGINEER DISTRICT CORPS OF ENGINEERS CHARLESTON, SOUTH CAROLINA	Designed by: <b>eHydro Software v3.6.1</b>	Design date: <b>11 Dec 2014</b>	Export date: <b>11 Dec 2014</b>
SPATIAL DATA BRANCH 69A HAGOOD AVE CHARLESTON, SC 29403 CESAC-GIS@USACE.ARMY.MIL	Reviewed by: <b>J. West</b>	Absolute scale: <b>1:6,000</b>	Project Reference Number: <b>CESAC-PRA-0001</b>
	Reference scale: <b>1 inch = 500 feet</b>	Survey Type: <b>Multi-beam Condition Survey</b>	
	Projection: <b>NAD 1983 StatePlane South Carolina FIPS 3900 Feet</b>		

**Shoalest Sounding**

● Sounding

**USCG Beacon**

■ Green

▲ Red

□ White

**USCG Buoy**

● Green

● Red

● Coast Guard Racon

● USCG Light

Sounding may cover several point areas and is calculated per reach quarter area

"+" indicates sounding above MLLW

**Depth in feet**

■ Less than 3

■ 3 to 6

■ 6 to 9

■ 9 to 12

■ Greater than 12

0 250 500 1,000 1,500 Feet

**Production Notes:**

- The information depicted on this product is for plotting purposes only.
- Vector hydrographic data derived from surveys conducted by the USACE and approved partners.
- Soundings are in feet and refer to Mean Lower Low Water (MLLW).
- Raster Background: ArcGIS Online Imagery Basemap.

In no event shall the U.S. Army Corps of Engineers, Charleston District Office, Spatial Data Branch be liable for direct, indirect, incidental, consequential or special damages of any kind, including, but not limited to, loss of anticipated profits or benefits arising out of use of or reliance on the data.

These data sets have been developed from the best available sources. Although efforts have been made to ensure that the datasets are accurate and reliable, errors and variable conditions originating from physical sources used to develop the data may be reflected in the data supplied.

This product is not intended to be used for navigation. Mariners are encouraged to use all prudent safety measures.

**U.S. Army Corps of Engineers**  
Charleston District

SHEET  
REFERENCE  
NUMBER  
**C003**  
Page 14 of 25

2643000 78°53'0"W 2644000 2645000 2646000 2647000 2648000 2649000 2650000

702000  
701000  
700000  
699000

702000  
701000  
700000  
699000

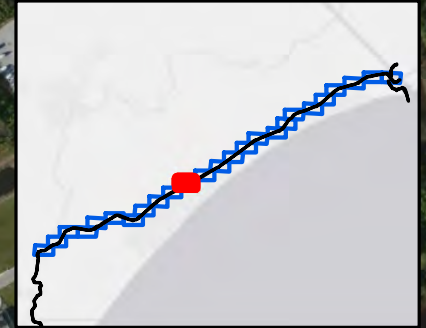
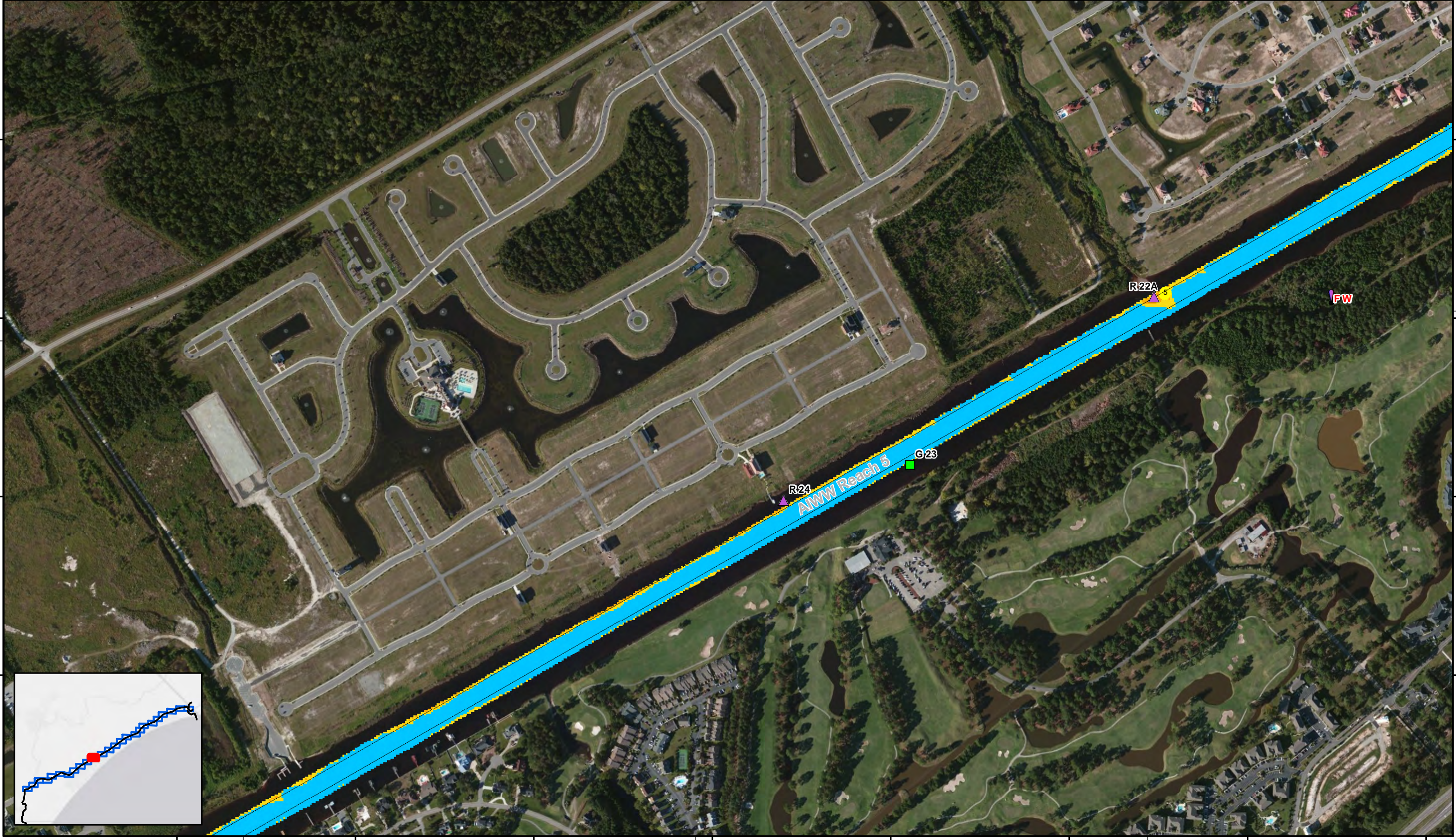
33°44'30"N

33°44'30"N

699000

699000

2643000 78°53'0"W 2644000 2645000 2646000 2647000 2648000 2649000 2650000



SHEET  
REFERENCE  
NUMBER  
C003  
Page 1 of 25

**Atlantic Intercoastal Waterway (AIWW)  
Channel Survey**  
The information depicted on this map represents the results of surveys made on the dates indicated and can only be considered as indicating the general conditions existing at that time.  
Conducted on: **04 November 2014**  
Little River, SC to Bucksport, SC

U.S. ARMY ENGINEER DISTRICT  
CORPS OF ENGINEERS  
CHARLESTON, SOUTH CAROLINA  
SPATIAL DATA BRANCH  
69A HAGOOD AVE  
CHARLESTON, SC 29403  
CESAC-GIS@USACE.ARMY.MIL

Designed by: <b>eHydro Software v3.6.1</b>	Design date: <b>11 Dec 2014</b>	Export date: <b>11 Dec 2014</b>
Reviewed by: <b>J. West</b>	Absolute scale: <b>1:6,000</b>	Project Reference Number: <b>CESAC-PR-001</b>
Reference scale: <b>1 inch = 500 feet</b>	Survey Type: <b>Multi-beam Condition Survey</b>	
Projection: <b>NAD 1983 StatePlane South Carolina FIPS 3900 Feet</b>		

**Shoalest Sounding**  
● Sounding  
Sounding may cover several point areas and is calculated per reach quarter area  
"±" indicates sounding above MLLW

**USCG Beacon**  
■ Green  
▲ Red  
□ White

**USCG Buoy**  
● Green  
● Red  
● Coast Guard Racon

○ White  
○ Yellow  
○ USCG Light

**Depth in feet**

Less than 3	3 to 6	6 to 9	9 to 12	Greater than 12
-------------	--------	--------	---------	-----------------

0 250 500 1,000 1,500 Feet



**Production Notes:**  
1. The information depicted on this product is for plotting purposes only.  
2. Vector hydrographic data derived from surveys conducted by the USACE and approved partners.  
3. Soundings are in feet and refer to Mean Lower Low Water (MLLW).  
4. Raster Background: ArcGIS Online Imagery Basemap.  
In no event shall the U.S. Army Corps of Engineers, Charleston District Office, Spatial Data Branch be liable for direct, indirect, incidental, consequential or special damages of any kind, including, but not limited to, loss of anticipated profits or benefits arising out of use of or reliance on the data.  
These data sets have been developed from the best available sources. Although efforts have been made to ensure that the data sets are accurate and reliable, errors and variable conditions originating from physical sources used to develop the data may be reflected in the data supplied.  
This product is not intended to be used for navigation.  
Mariners are encouraged to use all prudent safety measures.



2636000 2637000 2638000 2639000 2640000 2641000 2642000 2643000 2644000

6980000 6970000 6960000 6950000 6940000

33°44'0"N 33°43'30"N

78°54'0"W 78°53'30"W 78°53'0"W

6980000 6970000 6960000 6950000 6940000

2636000 2637000 2638000 2639000 2640000 2641000 2642000 2643000 2644000

6980000 6970000 6960000 6950000 6940000

33°43'30"N 33°43'0"N

78°54'0"W 78°53'30"W 78°53'0"W

6980000 6970000 6960000 6950000 6940000

2636000 2637000 2638000 2639000 2640000 2641000 2642000 2643000 2644000

6980000 6970000 6960000 6950000 6940000

33°43'30"N 33°43'0"N

78°54'0"W 78°53'30"W 78°53'0"W

6980000 6970000 6960000 6950000 6940000

2636000 2637000 2638000 2639000 2640000 2641000 2642000 2643000 2644000

6980000 6970000 6960000 6950000 6940000

33°43'30"N 33°43'0"N

78°54'0"W 78°53'30"W 78°53'0"W

SHEET REFERENCE NUMBER C003 Page 16 of 25

**Atlantic Intercoastal Waterway (AIWW) Channel Survey**  
 The information depicted on this map represents the results of surveys made on the dates indicated and can only be considered as indicating the general conditions existing at that time.  
 Conducted on: **04 November 2014**  
 Little River, SC to Bucksport, SC

U.S. ARMY ENGINEER DISTRICT  
 CORPS OF ENGINEERS  
 CHARLESTON, SOUTH CAROLINA

Designed by: eHydro Software v3.6.1  
 Reviewed by: J. West  
 Reference scale: 1 inch = 500 feet  
 Projection: NAD 1983 StatePlane South Carolina FIPS 3900 Feet

Design date: 11 Dec 2014  
 Export date: 11 Dec 2014  
 Project Reference Number: CESAC-PRA-0001  
 Survey Type: Multi-beam Condition Survey

**Shoalest Sounding**  
 Sounding may cover several point areas and is calculated per reach quarter area  
 "+" indicates sounding above MLLW

**USCG Beacon**  
 Green  
 Red  
 White

**USCG Buoy**  
 Green  
 Red  
 Coast Guard Racon

**USCG Light**  
 White  
 Yellow

**Depth in feet**

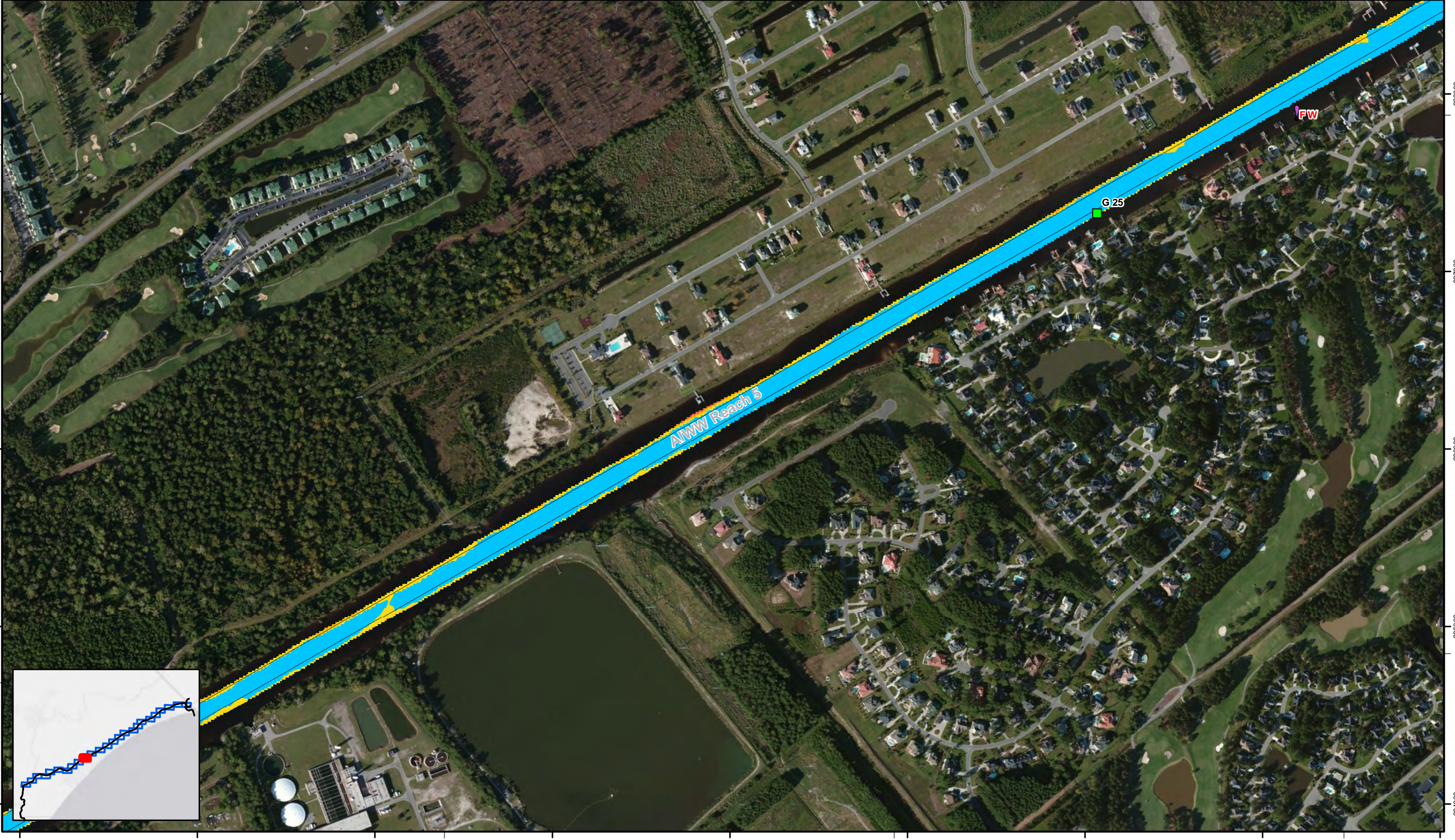
Less than 3 3 to 6 6 to 9 9 to 12 Greater than 12

0 250 500 1,000 1,500 Feet



**Production Notes:**  
 1. The information depicted on this product is for plotting purposes only.  
 2. Vector hydrographic data derived from surveys conducted by the USACE and approved partners. Soundings are in feet and refer to Mean Lower Low Water (MLLW).  
 4. Raster Background: ArcGIS Online Imagery Basemap.

In no event shall the U.S. Army Corps of Engineers, Charleston District Office, Spatial Data Branch be liable for direct, indirect, incidental, consequential or special damages of any kind, including, but not limited to, loss of anticipated profits or benefits arising out of use of or reliance on the data.  
 These data sets have been developed from the best available sources. Although efforts have been made to ensure that the datasets are accurate and reliable, errors and variable conditions originating from physical sources used to develop the data may be reflected in the data supplied.  
 This product is not intended to be used for navigation.  
 Mariners are encouraged to use all prudent safety measures.

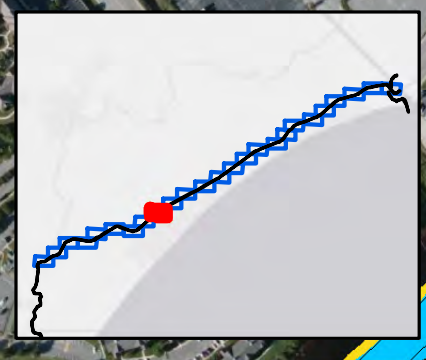
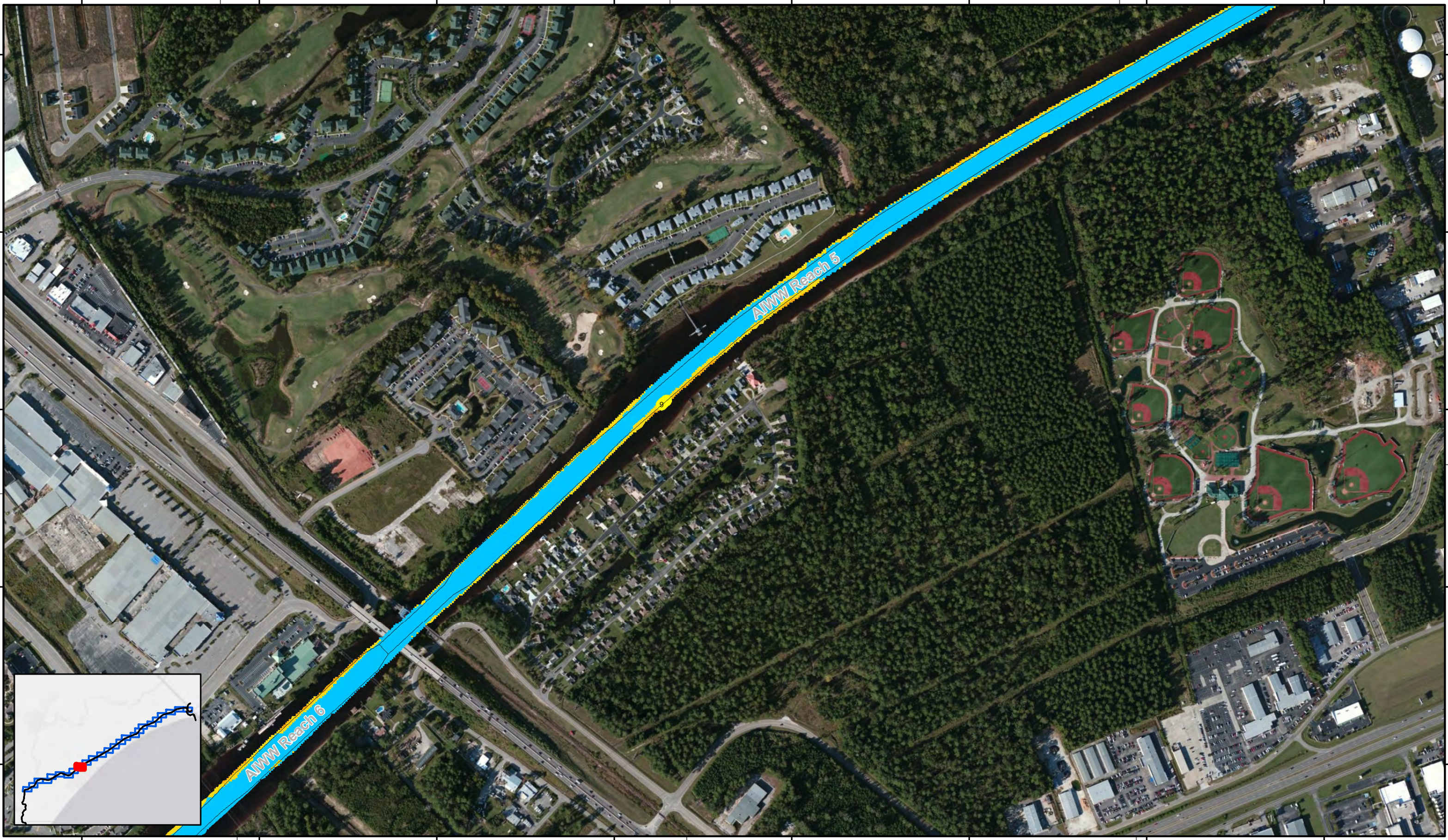




2630000 78°55'30"W 2631000 2632000 2633000 78°55'0"W 2634000 2635000 2636000 78°54'30"W 2637000

6940000  
6930000  
6920000  
6910000  
6900000

6940000  
6930000  
6920000  
6910000  
6900000



2630000 78°55'30"W 2631000 2632000 2633000 78°55'0"W 2634000 2635000 2636000 78°54'30"W 2637000

SHEET  
REFERENCE  
NUMBER  
C003  
Page 17 of 25

**Atlantic Intercoastal Waterway (AIWW) Channel Survey**  
The information depicted on this map represents the results of surveys made on the dates indicated and can only be considered as indicating the general conditions existing at that time.  
Conducted on: **04 November 2014**  
Little River, SC to Bucksport, SC

U.S. ARMY ENGINEER DISTRICT CORPS OF ENGINEERS CHARLESTON, SOUTH CAROLINA	Designed by: <b>eHydro Software v3.6.1</b>	Design date: <b>11 Dec 2014</b>	Export date: <b>11 Dec 2014</b>
SPATIAL DATA BRANCH 69A HAGOOD AVE CHARLESTON, SC 29403 CESAC-GIS@USACE.ARMY.MIL	Reviewed by: <b>J. West</b>	Absolute scale: <b>1:6,000</b>	Project Reference Number: <b>CESAC-PRA-0001</b>
	Reference scale: <b>1 inch = 500 feet</b>	Survey Type: <b>Multi-beam Condition Survey</b>	
	Projection: <b>NAD 1983 StatePlane South Carolina FIPS 3900 Feet</b>		

**Shoalest Sounding**  
● Sounding  
Sounding may cover several point areas and is calculated per reach quarter area  
"±" indicates sounding above MLLW

**USCG Beacon**  
■ Green  
▲ Red  
□ White

**USCG Buoy**  
● Green  
● Red  
● Coast Guard Racon

○ White  
○ Yellow  
○ USCG Light

**Depth in feet**

Less than 3	3 to 6	6 to 9	9 to 12	Greater than 12
-------------	--------	--------	---------	-----------------

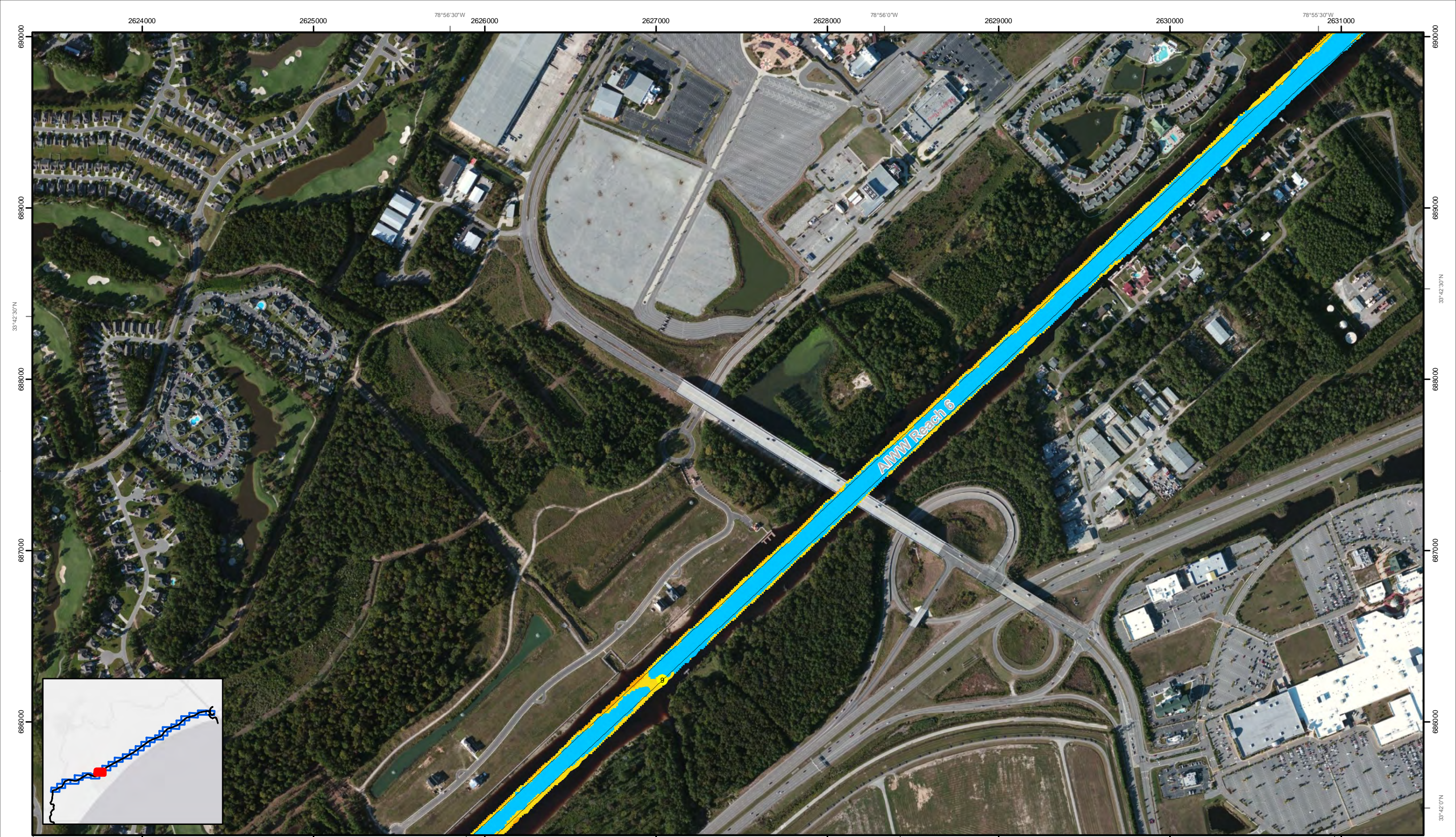
0 250 500 1,000 1,500 Feet



**Production Notes:**  
1. The information depicted on this product is for plotting purposes only.  
2. Vector hydrographic data derived from surveys conducted by the USACE and approved partners.  
3. Soundings are in feet and refer to Mean Lower Low Water (MLLW).  
4. Raster Background: ArcGIS Online Imagery Basemap.

In no event shall the U.S. Army Corps of Engineers, Charleston District Office, Spatial Data Branch be liable for direct, indirect, incidental, consequential or special damages of any kind, including, but not limited to, loss of anticipated profits or benefits arising out of use of or reliance on the data.  
These data sets have been developed from the best available sources. Although efforts have been made to ensure that the data sets are accurate and reliable, errors and variable conditions originating from physical sources used to develop the data may be reflected in the data supplied.  
This product is not intended to be used for navigation.  
Mariners are encouraged to use all prudent safety measures.





78°57'0"W  
2624000  
2625000  
2626000  
2627000  
2628000  
2629000  
2630000  
2631000  
78°55'30"W

33°42'30"N  
6890000  
6889000  
6888000  
6887000  
6886000  
6885000  
6884000  
6883000  
6882000  
6881000  
6880000

Atlantic Intercoastal Waterway (AIWW)  
Channel Survey

The information depicted on this map represents the results of surveys made on the dates indicated and can only be considered as indicating the general conditions existing at that time.

Conducted on: **04 November 2014**

Little River, SC to Bucksport, SC

SHEET REFERENCE NUMBER  
**C003**  
Page 18 of 25

U.S. ARMY ENGINEER DISTRICT CORPS OF ENGINEERS CHARLESTON, SOUTH CAROLINA	Designed by: <b>eHydro Software v3.6.1</b>	Design date: <b>11 Dec 2014</b>	Export date: <b>11 Dec 2014</b>
SPATIAL DATA BRANCH 69A HAGOOD AVE CHARLESTON, SC 29403 CESAC-GIS@USACE.ARMY.MIL	Reviewed by: <b>J. West</b>	Absolute scale: <b>1:6,000</b>	Project Reference Number: <b>CESAC-PR-001</b>
	Reference scale: <b>1 inch = 500 feet</b>	Survey Type: <b>Multi-beam Condition Survey</b>	
	Projection: <b>NAD 1983 StatePlane South Carolina FIPS 3900 Feet</b>		

**Shoalest Sounding**

● Sounding  
Sounding may cover several point areas and is calculated per reach quarter area  
"±" indicates sounding above MLLW

**USCG Beacon**

■ Green  
▲ Red  
□ White

**USCG Buoy**

● Green  
● Red  
● Coast Guard Racon

○ White  
○ Yellow  
○ USCG Light

**Depth in feet**

■ Less than 3   ■ 3 to 6   ■ 6 to 9   ■ 9 to 12   ■ Greater than 12

0   250   500   1,000   1,500 Feet



**Production Notes:**

- The information depicted on this product is for plotting purposes only.
- Vector hydrographic data derived from surveys conducted by the USACE and approved partners.
- Soundings are in feet and refer to Mean Lower Low Water (MLLW).
- Raster Background: ArcGIS Online Imagery Basemap.

In no event shall the U.S. Army Corps of Engineers, Charleston District Office, Spatial Data Branch be liable for direct, indirect, incidental, consequential or special damages of any kind, including, but not limited to, loss of anticipated profits or benefits arising out of use of or reliance on the data.

These data sets have been developed from the best available sources. Although efforts have been made to ensure that the datasets are accurate and reliable, errors and variable conditions originating from physical sources used to develop the data may be reflected in the data supplied.

This product is not intended to be used for navigation. Mariners are encouraged to use all prudent safety measures.



2619000 2620000 2621000 2622000 2623000 2624000 2625000 2626000

33°42'07"N

6850000

6840000

6830000

33°41'30"N

6820000

33°42'07"N

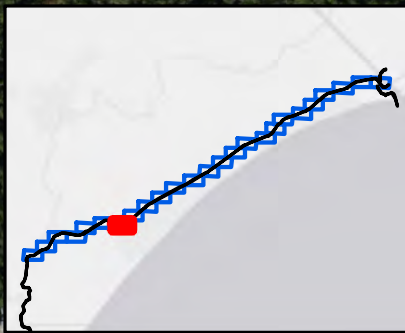
6850000

6840000

6830000

33°41'30"N

6820000



2619000 2620000 2621000 2622000 2623000 2624000 2625000 2626000

**Atlantic Intercoastal Waterway (AIWW) Channel Survey**  
 The information depicted on this map represents the results of surveys made on the dates indicated and can only be considered as indicating the general conditions existing at that time.  
 Conducted on: **04 November 2014**  
 Little River, SC to Bucksport, SC

U.S. ARMY ENGINEER DISTRICT  
 CORPS OF ENGINEERS  
 CHARLESTON, SOUTH CAROLINA  
 SPATIAL DATA BRANCH  
 69A HAGOOD AVE  
 CHARLESTON, SC 29403  
 CESAC-GIS@USACE.ARMY.MIL

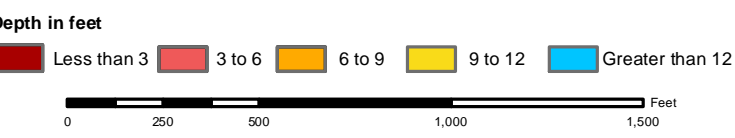
Designed by: <b>eHydro Software v3.6.1</b>	Design date: <b>11 Dec 2014</b>	Export date: <b>11 Dec 2014</b>
Reviewed by: <b>J. West</b>	Absolute scale: <b>1:6,000</b>	Project Reference Number: <b>CESAC-PRA-0001</b>
Reference scale: <b>1 inch = 500 feet</b>	Survey Type: <b>Multi-beam Condition Survey</b>	
Projection: <b>NAD 1983 StatePlane South Carolina FIPS 3900 Feet</b>		

**Shoalest Sounding**  
 ● Sounding  
*Sounding may cover several point areas and is calculated per reach quarter area*  
 "+" indicates sounding above MLLW

**USCG Beacon**  
 ● Green  
 ▲ Red  
 □ White

**USCG Buoy**  
 ● Green  
 ● Red  
 ● Coast Guard Racon

○ White  
 ○ Yellow  
 ○ USCG Light



**Production Notes:**  
 1. The information depicted on this product is for plotting purposes only.  
 2. Vector hydrographic data derived from surveys conducted by the USACE and approved partners.  
 3. Soundings are in feet and refer to Mean Lower Low Water (MLLW).  
 4. Raster Background: ArcGIS Online Imagery Basemap.  
 In no event shall the U.S. Army Corps of Engineers, Charleston District Office, Spatial Data Branch be liable for direct, indirect, incidental, consequential or special damages of any kind, including, but not limited to, loss of anticipated profits or benefits arising out of use of or reliance on the data.  
 These data sets have been developed from the best available sources. Although efforts have been made to ensure that the datasets are accurate and reliable, errors and variable conditions originating from physical sources used to develop the data may be reflected in the data supplied.  
 This product is not intended to be used for navigation.  
 Mariners are encouraged to use all prudent safety measures.

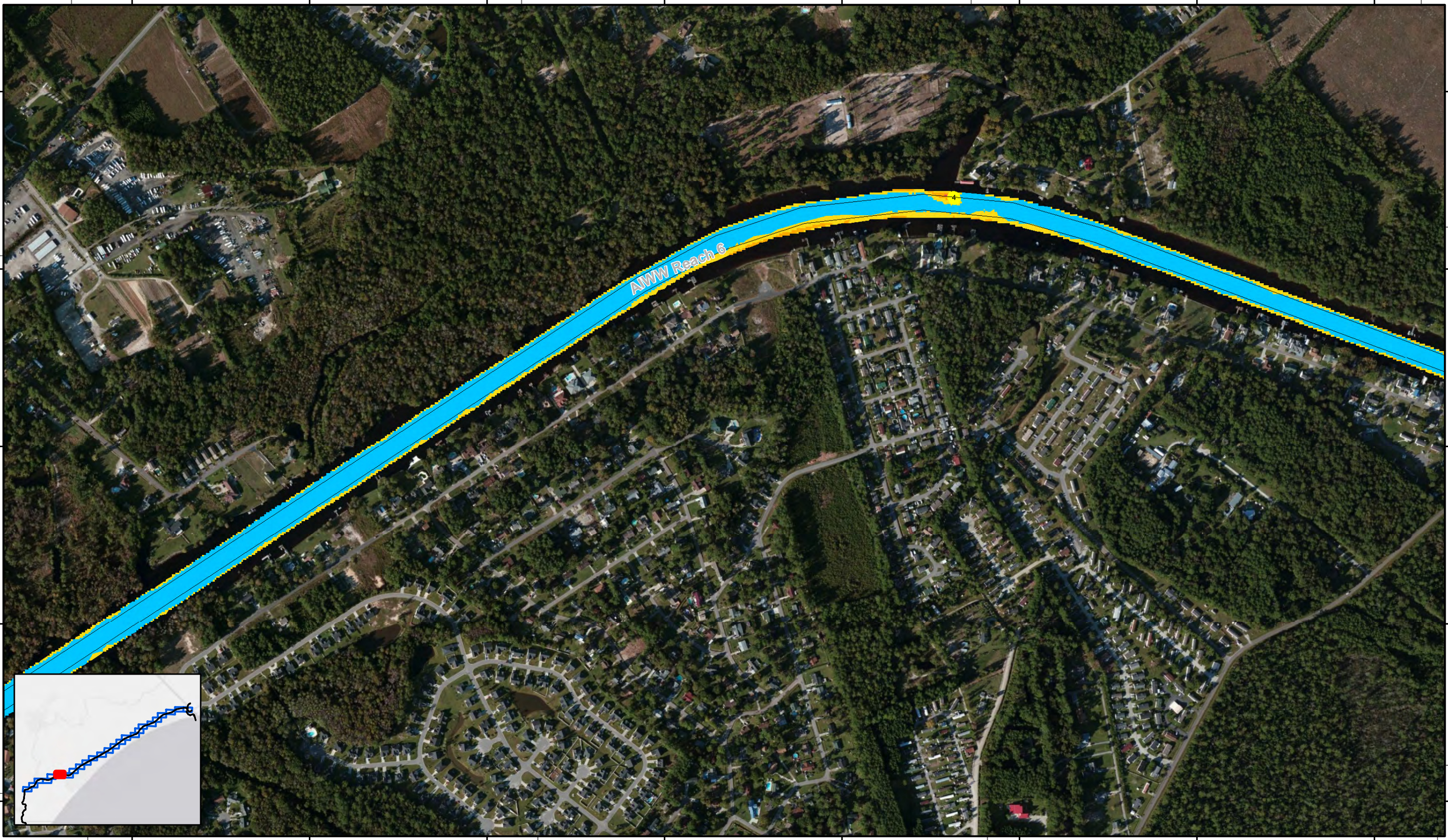


SHEET  
 REFERENCE  
 NUMBER  
**C003**  
 Page 19 of 25

78°59'30"W 2611000 2612000 2613000 78°59'0"W 2614000 2615000 78°58'30"W 2616000 2617000 2618000 78°58'0"W

686000  
685000  
684000  
683000  
682000

686000  
685000  
684000  
683000  
682000



SHEET  
REFERENCE  
NUMBER  
C003  
Page 20 of 25

**Atlantic Intercoastal Waterway (AIWW)  
Channel Survey**  
The information depicted on this map represents the results of surveys made on the dates indicated and can only be considered as indicating the general conditions existing at that time.  
Conducted on: **04 November 2014**  
Little River, SC to Bucksport, SC

U.S. ARMY ENGINEER DISTRICT  
CORPS OF ENGINEERS  
CHARLESTON, SOUTH CAROLINA  
SPATIAL DATA BRANCH  
69A HAGOOD AVE  
CHARLESTON, SC 29403  
CESAC-GIS@USACE.ARMY.MIL

Designed by: <b>eHydro Software v3.6.1</b>	Design date: <b>11 Dec 2014</b>	Export date: <b>11 Dec 2014</b>
Reviewed by: <b>J. West</b>	Absolute scale: <b>1:6,000</b>	Project Reference Number: <b>CESAC-PRA-0001</b>
Reference scale: <b>1 inch = 500 feet</b>	Survey Type: <b>Multi-beam Condition Survey</b>	
Projection: <b>NAD 1983 StatePlane South Carolina FIPS 3900 Feet</b>		

**Shoalest Sounding**  
● Sounding  
*Sounding may cover several point areas and is calculated per reach quarter area*  
"±" indicates sounding above MLLW

**USCG Beacon**  
■ Green  
▲ Red  
□ White

**USCG Buoy**  
● Green  
● Red  
● Coast Guard Racon

○ White  
○ Yellow  
○ USCG Light

**Depth in feet**

Less than 3	3 to 6	6 to 9	9 to 12	Greater than 12
-------------	--------	--------	---------	-----------------

0 250 500 1,000 1,500 Feet

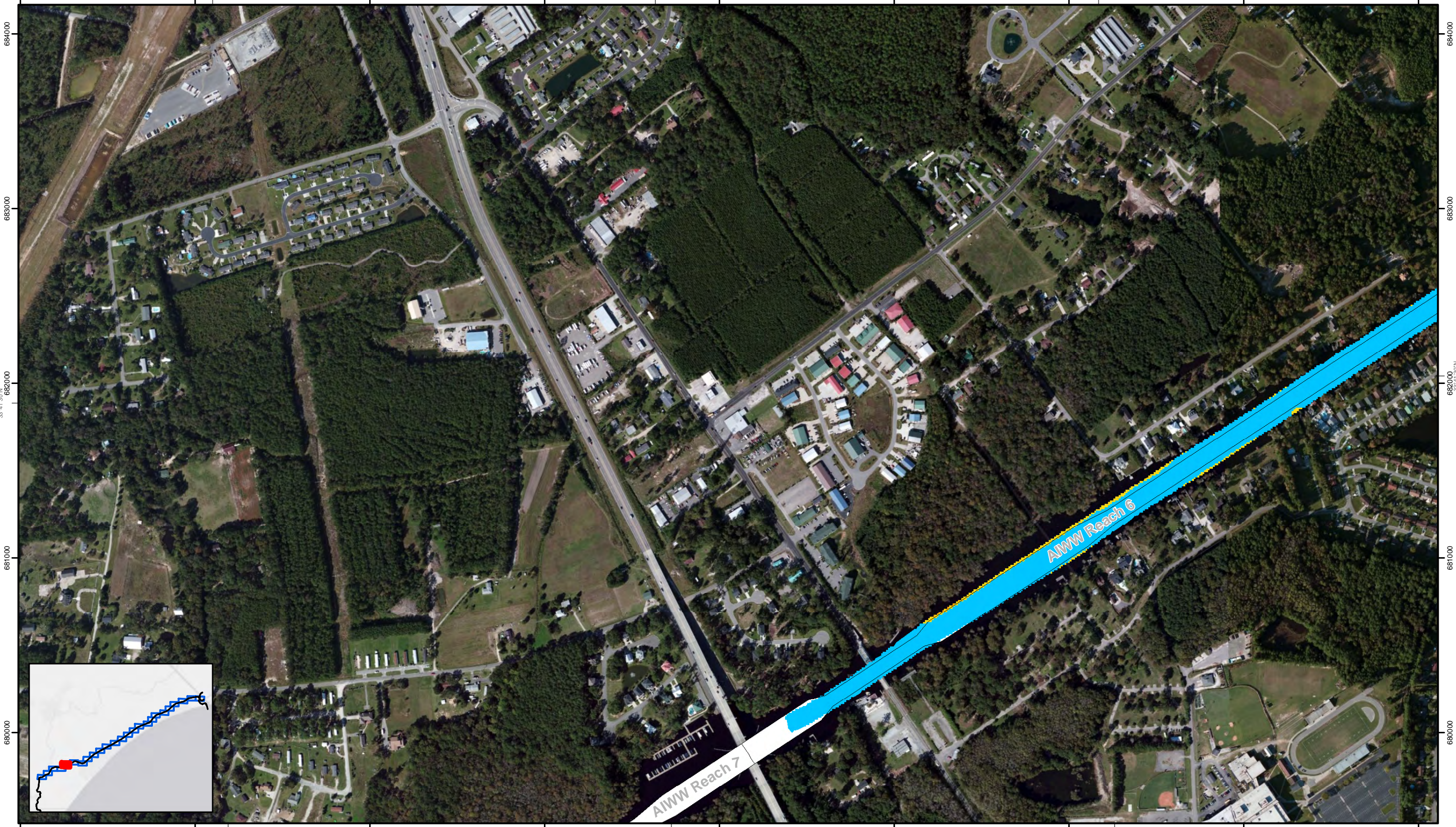


**Production Notes:**  
1. The information depicted on this product is for plotting purposes only.  
2. Vector hydrographic data derived from surveys conducted by the USACE and approved partners.  
3. Soundings are in feet and refer to Mean Lower Low Water (MLLW).  
4. Raster Background: ArcGIS Online Imagery Basemap.  
This product is not intended to be used for navigation.  
Mariners are encouraged to use all prudent safety measures.

In no event shall the U.S. Army Corps of Engineers, Charleston District Office, Spatial Data Branch be liable for direct, indirect, incidental, consequential or special damages of any kind, including, but not limited to, loss of anticipated profits or benefits arising out of use of or reliance on the data.  
These data sets have been developed from the best available sources. Although efforts have been made to ensure that the datasets are accurate and reliable, errors and variable conditions originating from physical sources used to develop the data may be reflected in the data supplied.  
This product is not intended to be used for navigation.  
Mariners are encouraged to use all prudent safety measures.



262000 263000 264000 265000 266000 267000 268000 269000 261000



262000 263000 264000 265000 266000 267000 268000 269000 261000

SHEET  
REFERENCE  
NUMBER  
C003  
Page 2 of 25

**Atlantic Intercoastal Waterway (AIWW)  
Channel Survey**  
The information depicted on this map represents the results of surveys made on the dates indicated and can only be considered as indicating the general conditions existing at that time.  
Conducted on: **04 November 2014**  
Little River, SC to Bucksport, SC

U.S. ARMY ENGINEER DISTRICT  
CORPS OF ENGINEERS  
CHARLESTON, SOUTH CAROLINA  
SPATIAL DATA BRANCH  
69A HAGOOD AVE  
CHARLESTON, SC 29403  
CESAC-GIS@USACE.ARMY.MIL

Designed by: <b>eHydro Software v3.6.1</b>	Design date: <b>11 Dec 2014</b>	Export date: <b>11 Dec 2014</b>
Reviewed by: <b>J. West</b>	Absolute scale: <b>1:6,000</b>	Project Reference Number: <b>CESAC-PR-001</b>
Reference scale: <b>1 inch = 500 feet</b>	Survey Type: <b>Multi-beam Condition Survey</b>	
Projection: <b>NAD 1983 StatePlane South Carolina FIPS 3900 Feet</b>		

**Shoalest Sounding**  
● Sounding  
*Sounding may cover several point areas and is calculated per reach quarter area*  
\*+ indicates sounding above MLLW

**USCG Beacon**  
■ Green  
▲ Red  
□ White

**USCG Buoy**  
● Green  
● Red  
● Coast Guard Racon

○ White  
○ Yellow  
○ USCG Light

**Depth in feet**

Less than 3	3 to 6	6 to 9	9 to 12	Greater than 12
-------------	--------	--------	---------	-----------------

0 250 500 1,000 1,500 Feet



**Production Notes:**  
1. The information depicted on this product is for plotting purposes only.  
2. Vector hydrographic data derived from surveys conducted by the USACE and approved partners to Mean Lower Low Water (MLLW).  
3. Soundings are in feet and refer to Mean Lower Low Water (MLLW).  
4. Raster Background: Aerial Imagery Base Map.  
In no event shall the U.S. Army Corps of Engineers, Charleston District Office, Spatial Data Branch be liable for direct, indirect, incidental, consequential or special damages of any kind, including, but not limited to, loss of anticipated profits or benefits arising out of use of or reliance on the data.  
These data sets have been developed from the best available sources. Although efforts have been made to ensure that the datasets are accurate and reliable, errors and variable conditions originating from physical sources used to develop the data may be reflected in the data supplied.  
This product is not intended to be used for navigation.  
Mariners are encouraged to use all prudent safety measures.

