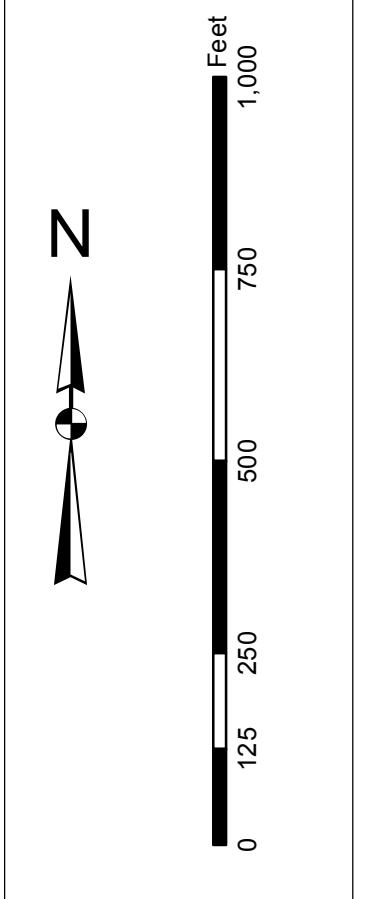


In accordance with the U.S. Army Corps of Engineers, Charleston District Office, Special Use Permit (SUP) process, this map is intended to provide information to the public regarding the proposed project. It is not intended to be used for navigation. All users are encouraged to use all standard safety measures.

Production Notes:
1. This map is a preliminary map and is subject to change without notice.
2. This map is not intended to be used for navigation.
3. This map is not intended to be used for navigation.
4. This map is not intended to be used for navigation.
5. This map is not intended to be used for navigation.



Legend

Water
 - Blue: Water
 - Yellow: Shallow Water
 - Orange: Intermediate Water
 - Red: Deep Water

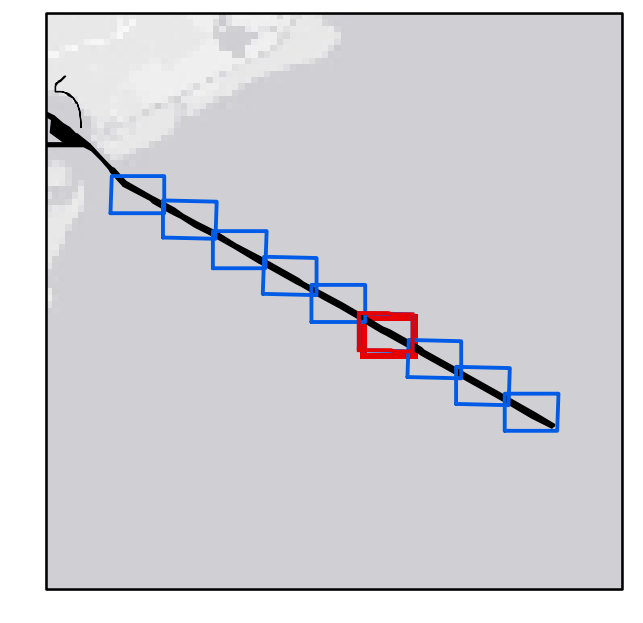
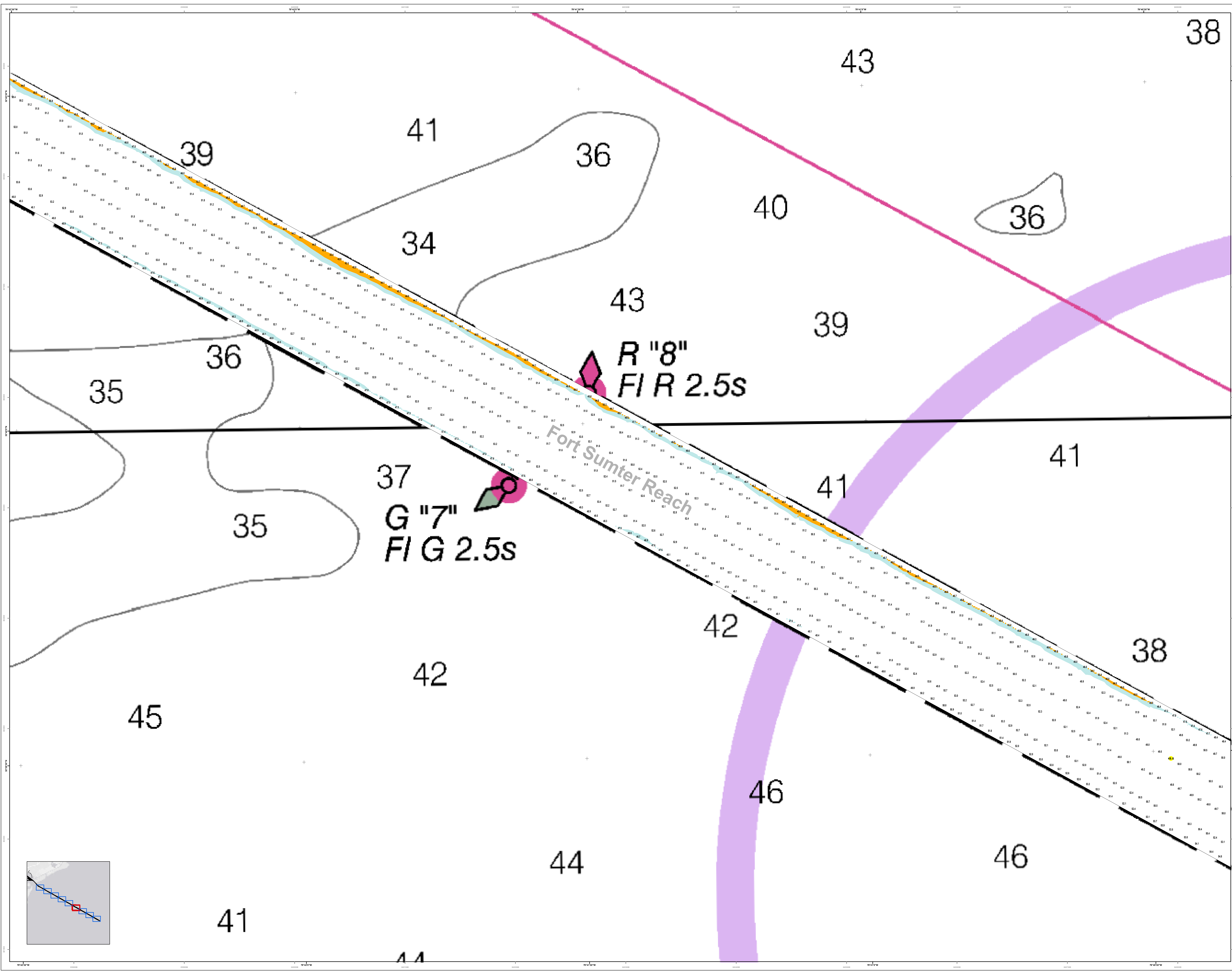
Channel
 - Blue: Channel
 - Yellow: Channel
 - Orange: Channel
 - Red: Channel

Structure
 - Black: Structure
 - Red: Structure
 - Yellow: Structure
 - Orange: Structure
 - Blue: Structure

Other
 - Green: Other
 - Purple: Other
 - Brown: Other
 - Grey: Other

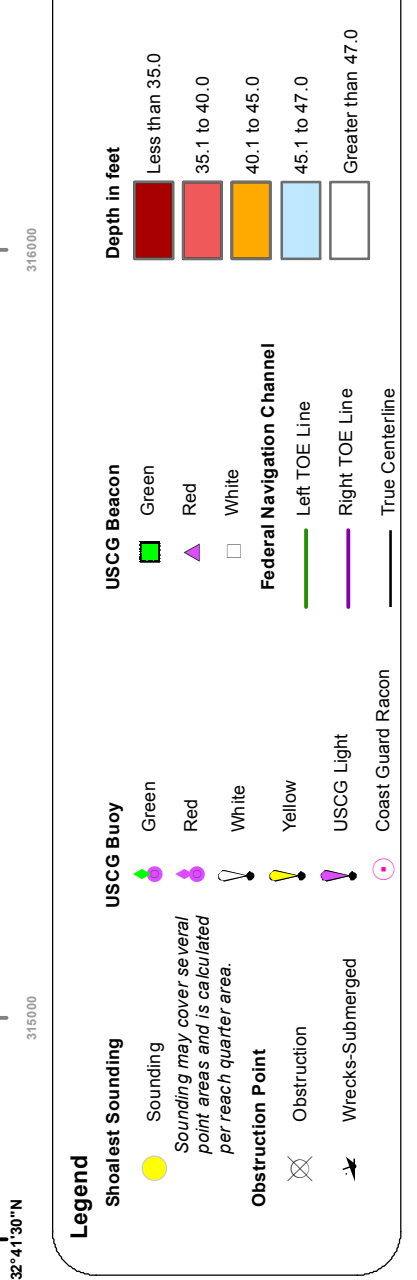
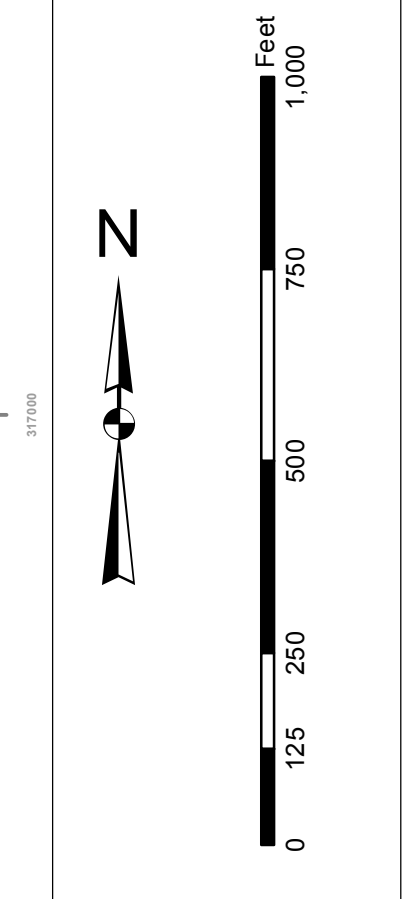
Designed By:	elhydro Software v3.02	Production Date:	08 Sep 2015
Reviewed By:	1:10,000	Project Reference Number:	17 Sep 2015
Reference Scale:	1 inch = 250 feet	Survey Type:	Single-Beam Condition Survey
Projection:	NAD 1983 StatePlane South Carolina FIPS 3800 Feet Intl		

Charleston Entrance Channel Survey
 The information depicted on this map represents the results of surveys made on the dates indicated and can only be used for general information purposes. It is not intended to be used for navigation. Concluded on: 08 Sep 2015
 Charleston, South Carolina



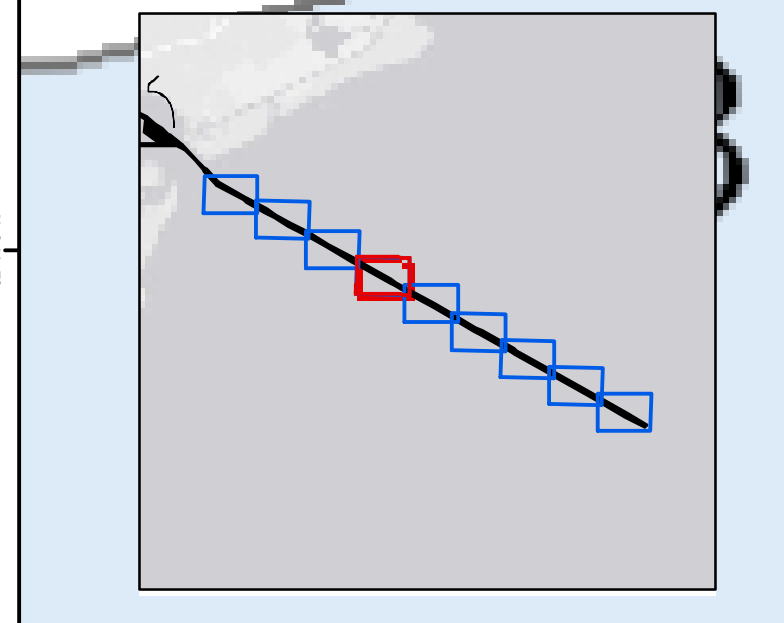
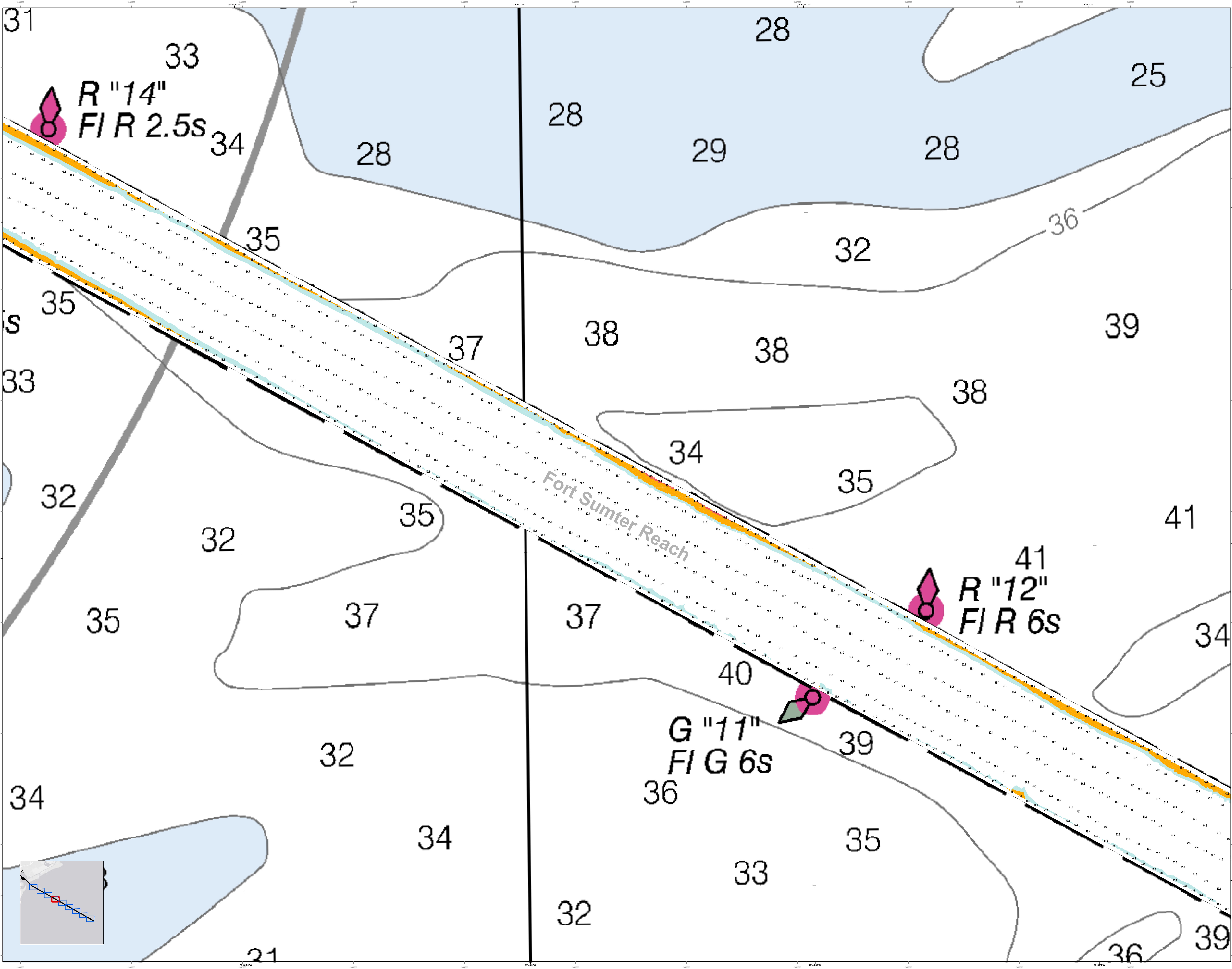
In accordance with the U.S. Army Corps of Engineers, Charleston District Office, Special Use Permit for the use of the Fort Sumter Reach, the information depicted on this map represents the results of surveys made on the dates indicated and conditions existing at that time. The information is for general reference only and is not intended to be used for navigation. Mariners are encouraged to use all prudent safety measures.

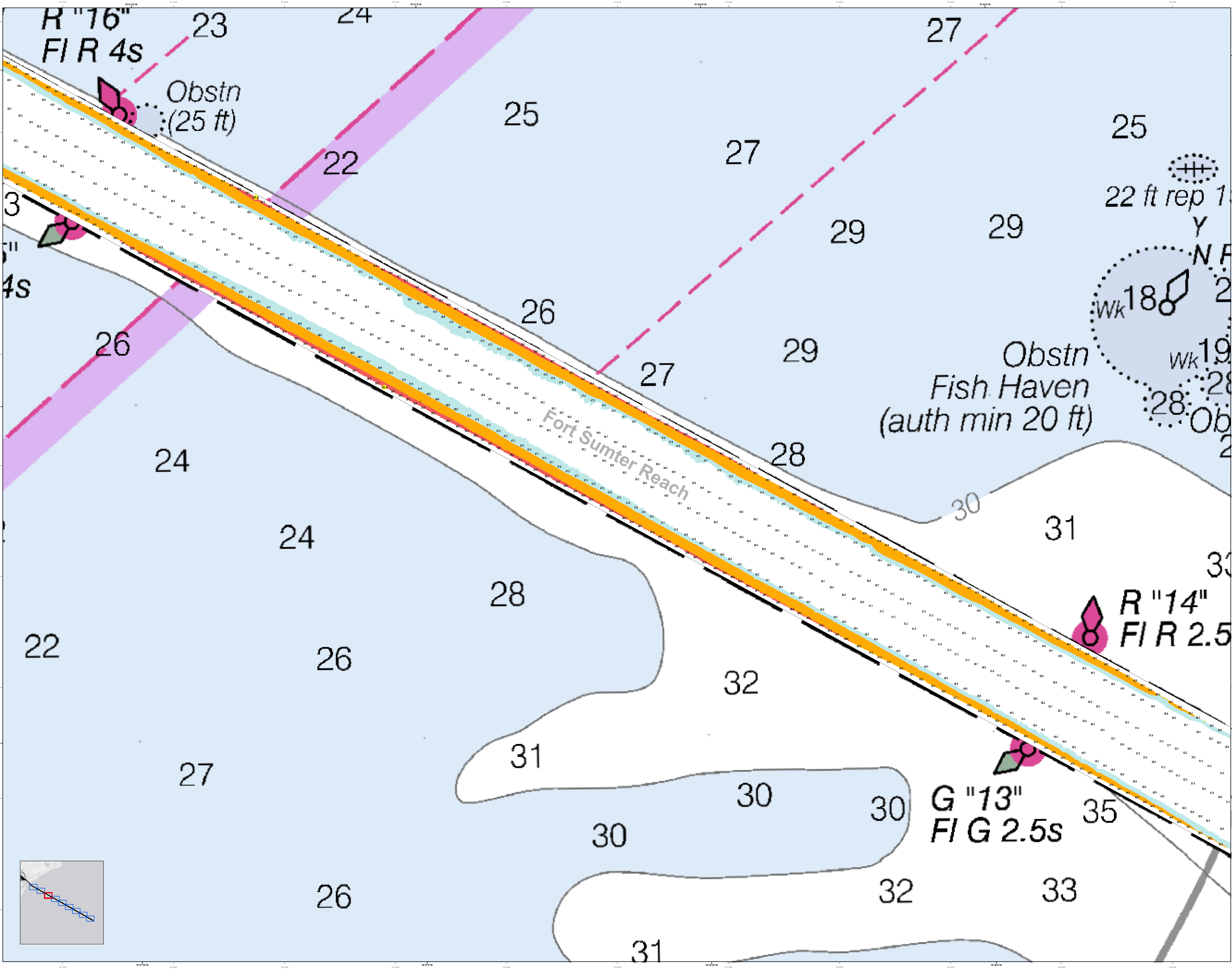
Production Date: 17 Sep 2015
Survey Date: 08 Sep 2015
Project Reference Number: 13000
Survey Type: Single-Beam Condition Survey



Designed By: elyfto Software v3.02	Production Date: 17 Sep 2015
Reviewed By: T. J. JORDAN	Survey Date: 08 Sep 2015
Reference Scale: 1 inch = 250 feet	Project Reference Number: 13000
Projection: NAD 1983 StatePlane South Carolina FIPS 3300 Feet Intl	Survey Type: Single-Beam Condition Survey

Charleston Entrance Channel Survey
The information depicted on this map represents the results of surveys made on the dates indicated and conditions existing at that time.
Concluded on: 08 Sep 2015
Charleston, South Carolina





U.S. Army Corps of Engineers
Charleston District

Production Date: 17 Sep 2015
Survey Date: 08 Sep 2015
Project Reference Number: 13000
Survey Type: Single-Beam Condition Survey

U.S. Army District: CHARLESTON, SOUTH CAROLINA
Branch: SEVENTH DISTRICT BRANCH
Location: CHARLESTON, SC 29403
Projection: NAD 1983 StatePlane South Carolina FIPS 3200 Feet Intl

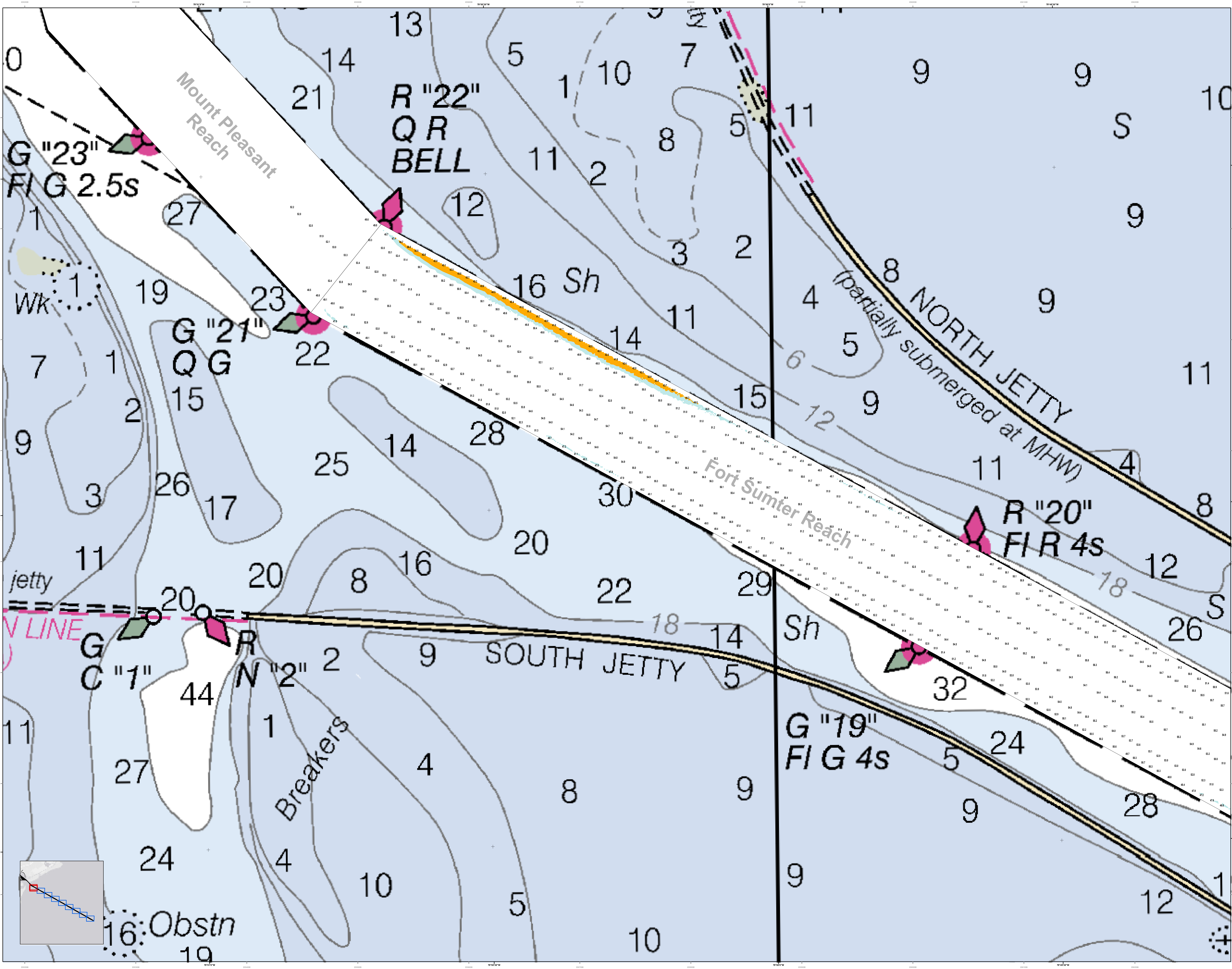
Charleston Entrance Channel Survey
The information depicted on this map represents the results of surveys made on the dates indicated and can only be used for general information purposes. It is not intended for navigation. Concluded on: 08 Sep 2015
Charleston, South Carolina

Legend:

- Obstruction
- Obstruction Light
- Obstruction Buoy
- Obstruction Beacon
- Obstruction Daymark
- Obstruction Nightmark
- Obstruction Sound
- Obstruction Flash
- Obstruction Color
- Obstruction Shape
- Obstruction Size
- Obstruction Color
- Obstruction Shape
- Obstruction Size

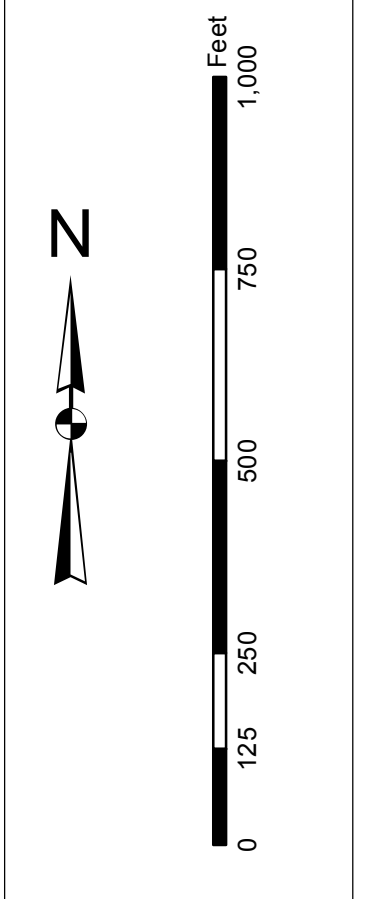
Scale: 1 inch = 250 feet
Projection: NAD 1983 StatePlane South Carolina FIPS 3200 Feet Intl

Sheet Reference Number: C002
Sheet 7 of 9



In accordance with the U.S. Army Corps of Engineers, Charleston District Office, Special Order 1000-1-10, dated 10/1/10, the information depicted on this map represents the results of surveys made on the dates indicated and can only be used for the purposes stated. The information is not to be used for any other purpose without the express approval of the District Office. The information is not to be used for any other purpose without the express approval of the District Office.

Production Notes:
1. This chart is produced in accordance with the U.S. Army Corps of Engineers, Charleston District Office, Special Order 1000-1-10, dated 10/1/10.
2. The information is not to be used for any other purpose without the express approval of the District Office.
3. The information is not to be used for any other purpose without the express approval of the District Office.



Symbol	Description
[Green diamond]	Lighted Buoy
[Red diamond]	Lighted Buoy
[Black diamond]	Lighted Buoy
[Yellow diamond]	Lighted Buoy
[Blue diamond]	Lighted Buoy
[Pink diamond]	Lighted Buoy
[Green circle]	Lighted Buoy
[Red circle]	Lighted Buoy
[Black circle]	Lighted Buoy
[Yellow circle]	Lighted Buoy
[Blue circle]	Lighted Buoy
[Pink circle]	Lighted Buoy
[Green square]	Lighted Buoy
[Red square]	Lighted Buoy
[Black square]	Lighted Buoy
[Yellow square]	Lighted Buoy
[Blue square]	Lighted Buoy
[Pink square]	Lighted Buoy
[Green triangle]	Lighted Buoy
[Red triangle]	Lighted Buoy
[Black triangle]	Lighted Buoy
[Yellow triangle]	Lighted Buoy
[Blue triangle]	Lighted Buoy
[Pink triangle]	Lighted Buoy
[Green star]	Lighted Buoy
[Red star]	Lighted Buoy
[Black star]	Lighted Buoy
[Yellow star]	Lighted Buoy
[Blue star]	Lighted Buoy
[Pink star]	Lighted Buoy
[Green cross]	Lighted Buoy
[Red cross]	Lighted Buoy
[Black cross]	Lighted Buoy
[Yellow cross]	Lighted Buoy
[Blue cross]	Lighted Buoy
[Pink cross]	Lighted Buoy
[Green dot]	Lighted Buoy
[Red dot]	Lighted Buoy
[Black dot]	Lighted Buoy
[Yellow dot]	Lighted Buoy
[Blue dot]	Lighted Buoy
[Pink dot]	Lighted Buoy
[Green dash-dot]	Lighted Buoy
[Red dash-dot]	Lighted Buoy
[Black dash-dot]	Lighted Buoy
[Yellow dash-dot]	Lighted Buoy
[Blue dash-dot]	Lighted Buoy
[Pink dash-dot]	Lighted Buoy
[Green dashed]	Lighted Buoy
[Red dashed]	Lighted Buoy
[Black dashed]	Lighted Buoy
[Yellow dashed]	Lighted Buoy
[Blue dashed]	Lighted Buoy
[Pink dashed]	Lighted Buoy
[Green dotted]	Lighted Buoy
[Red dotted]	Lighted Buoy
[Black dotted]	Lighted Buoy
[Yellow dotted]	Lighted Buoy
[Blue dotted]	Lighted Buoy
[Pink dotted]	Lighted Buoy
[Green solid]	Lighted Buoy
[Red solid]	Lighted Buoy
[Black solid]	Lighted Buoy
[Yellow solid]	Lighted Buoy
[Blue solid]	Lighted Buoy
[Pink solid]	Lighted Buoy

Designed By:	U.S. Army Corps of Engineers, Charleston District Office
Reviewed By:	U.S. Army Corps of Engineers, Charleston District Office
Scale:	1 inch = 250 feet
Projection:	NAD 1983 StatePlane South Carolina FIPS 3300 Feet Intl
Production Date:	08 Sep 2015
Project Reference Number:	17 Sep 2015
Survey Type:	Single-Beam Condition Survey

Charleston Entrance Channel Survey
The information depicted on this map represents the results of surveys made on the dates indicated and can only be used for the purposes stated. The information is not to be used for any other purpose without the express approval of the District Office.