

R "2"
FIR 2.5s

2.5s

51

49

55

S Sh

55

45

54

53

Fort Sumter Reach

51

47

RW "C"
Mo (A)
RACON

56

51

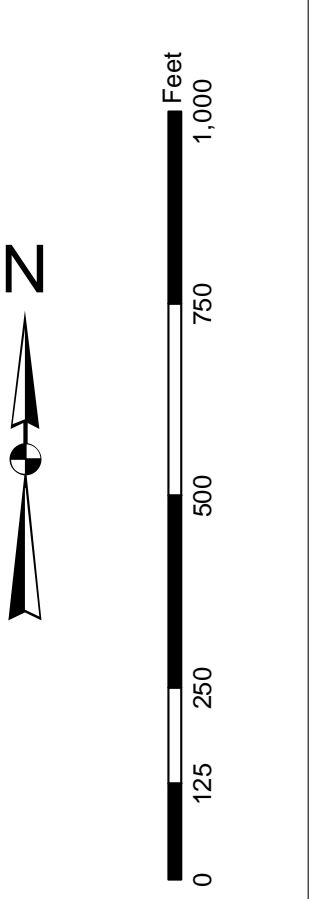
54

57



U.S. Army Corps of Engineers
Charleston District

Disclaimer:
This map was prepared by the U.S. Army Corps of Engineers, Charleston District Office. Special data sources are indicated on this map. The Corps of Engineers is not responsible for the accuracy of the data provided by other agencies. The Corps of Engineers is not responsible for the accuracy of the data provided by other agencies. The Corps of Engineers is not responsible for the accuracy of the data provided by other agencies.

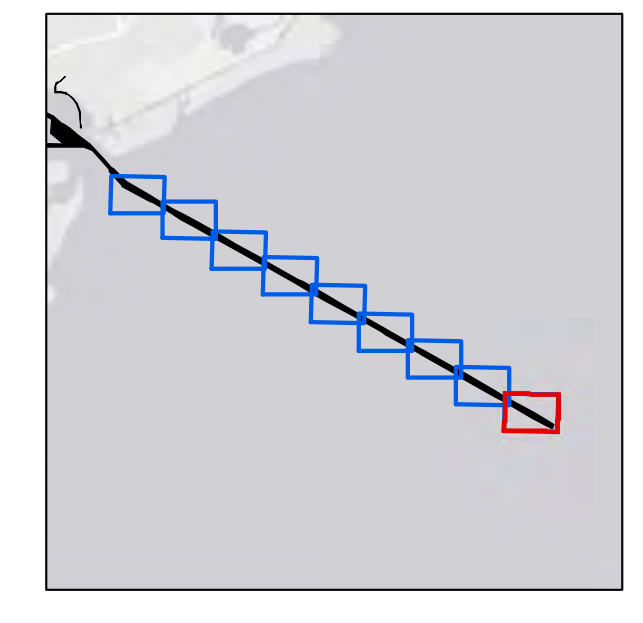


Legend

	Survey Boundary
	Channel Centerline
	Channel Edge
	Channel Bank
	Channel Bottom
	Channel Obstruction
	Channel Structure
	Channel Marker
	Channel Station
	Channel Datum
	Channel Elevation
	Channel Slope
	Channel Cross-section
	Channel Profile
	Channel Plan
	Channel Section
	Channel Stationing
	Channel Elevation
	Channel Slope
	Channel Cross-section
	Channel Profile
	Channel Plan
	Channel Section

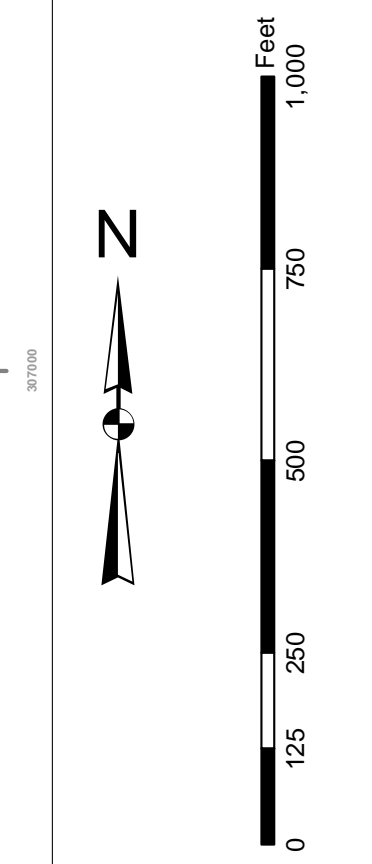
Designed by:	CEAC-GIS/SUSACE-ARMY MIL
Reviewed by:	CEAC-GIS/SUSACE-ARMY MIL
Approved by:	CEAC-GIS/SUSACE-ARMY MIL
Project Reference Number:	18JUN0010
Survey Type:	Single-beam Channel Survey
Scale:	1 inch = 250 feet
Projection:	NAD 1983 StatePlane South Carolina FIPS 3800 Feet Intl
Creation Date:	23 Jun 2015 12:20 JUN 2015
Design Date:	23 Jun 2015
Software:	Hydro Software v3.02

Charleston Entrance Channel Survey
The information depicted on this map represents the results of surveys made on the dates indicated and can only be used for the purposes for which it was prepared. The information is not to be used for any other purpose without the express written consent of the U.S. Army Corps of Engineers, Charleston District Office.
Concluded on: 18 June 2015
Charleston, South Carolina



In the event that the U.S. Army Corps of Engineers, Charleston District Office, Special Data Branch is made a party to a lawsuit, the information contained herein is provided for informational purposes only and does not constitute an offer of insurance or any other financial product. There are no warranties or representations made by the U.S. Army Corps of Engineers, Charleston District Office, Special Data Branch regarding the accuracy, completeness, or timeliness of the information contained herein. The information is provided as is and is not intended to be used for any purpose other than that for which it was provided. The information is provided for informational purposes only and does not constitute an offer of insurance or any other financial product. There are no warranties or representations made by the U.S. Army Corps of Engineers, Charleston District Office, Special Data Branch regarding the accuracy, completeness, or timeliness of the information contained herein. The information is provided as is and is not intended to be used for any purpose other than that for which it was provided.

Provisional Notes:
1. This map is for informational purposes only.
2. This map is not to be used for navigation.
3. This map is not to be used for any other purpose.
4. This map is not to be used for any other purpose.
5. This map is not to be used for any other purpose.



Legend

Soundings
 - 10.0 to 10.9
 - 11.0 to 11.9
 - 12.0 to 12.9
 - 13.0 to 13.9
 - 14.0 to 14.9
 - 15.0 to 15.9
 - 16.0 to 16.9
 - 17.0 to 17.9
 - 18.0 to 18.9
 - 19.0 to 19.9
 - 20.0 to 20.9
 - 21.0 to 21.9
 - 22.0 to 22.9
 - 23.0 to 23.9
 - 24.0 to 24.9
 - 25.0 to 25.9
 - 26.0 to 26.9
 - 27.0 to 27.9
 - 28.0 to 28.9
 - 29.0 to 29.9
 - 30.0 to 30.9
 - 31.0 to 31.9
 - 32.0 to 32.9
 - 33.0 to 33.9
 - 34.0 to 34.9
 - 35.0 to 35.9
 - 36.0 to 36.9
 - 37.0 to 37.9
 - 38.0 to 38.9
 - 39.0 to 39.9
 - 40.0 to 40.9
 - 41.0 to 41.9
 - 42.0 to 42.9
 - 43.0 to 43.9
 - 44.0 to 44.9
 - 45.0 to 45.9
 - 46.0 to 46.9
 - 47.0 to 47.9
 - 48.0 to 48.9
 - 49.0 to 49.9
 - 50.0 to 50.9

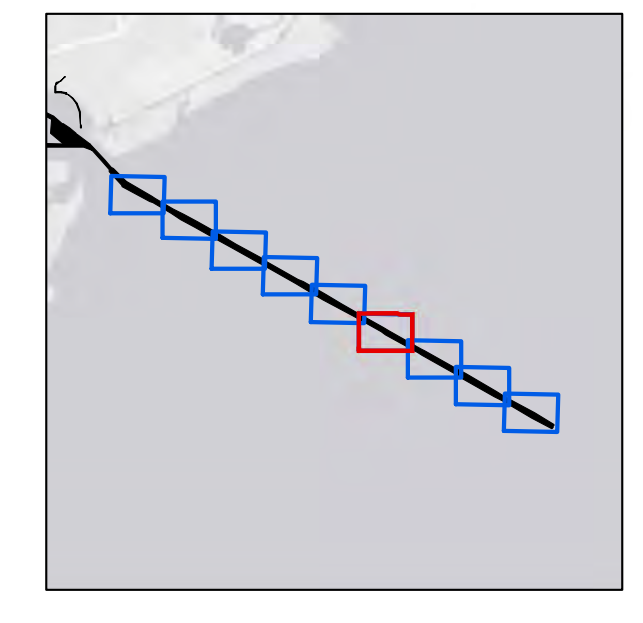
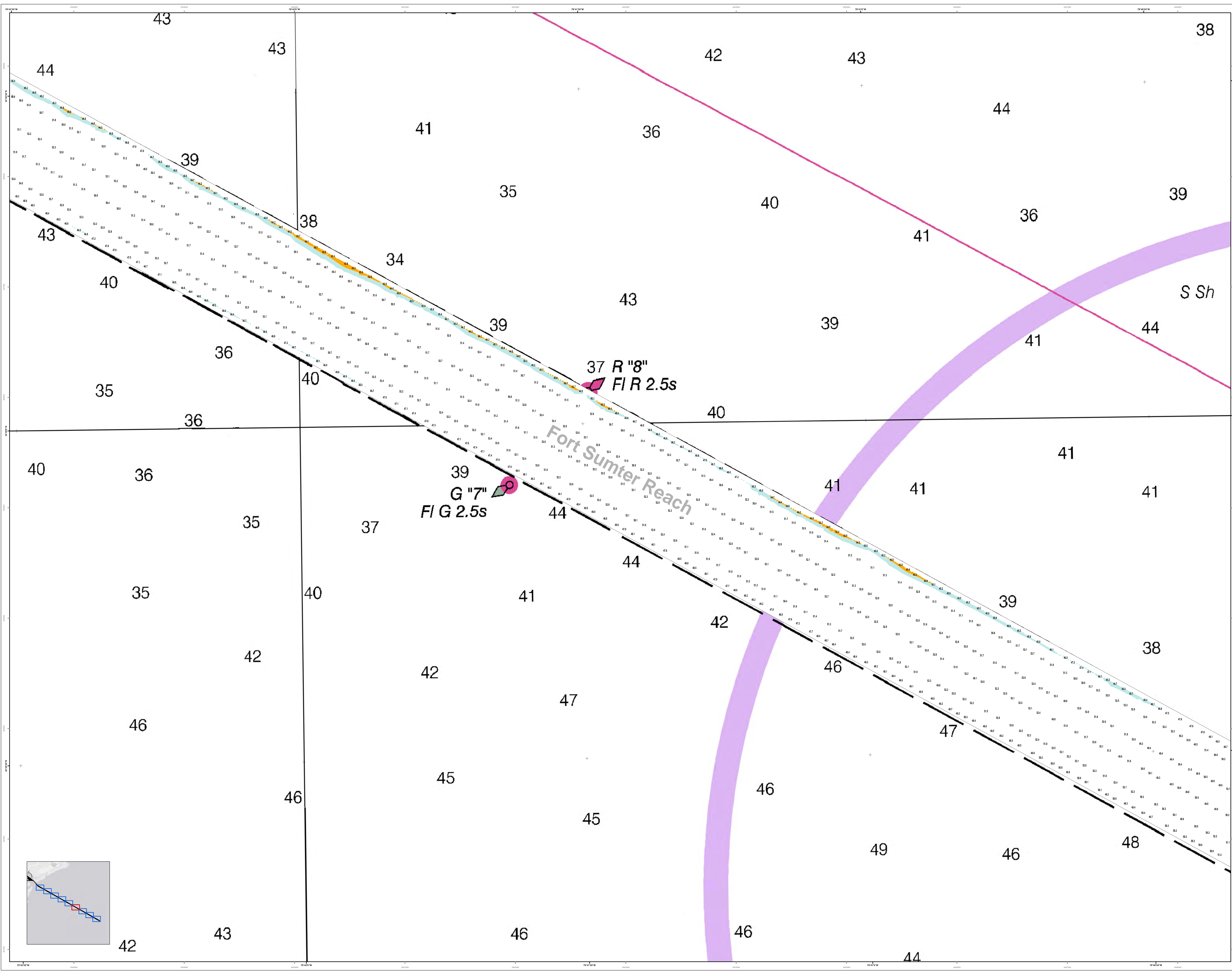
USACE Features
 - USACE Channel
 - USACE Bank
 - USACE Structure
 - USACE Facility
 - USACE Obstruction
 - USACE Other

USACE Boundary
 - USACE Channel
 - USACE Bank
 - USACE Structure
 - USACE Facility
 - USACE Obstruction
 - USACE Other

USACE Soundings
 - USACE Channel
 - USACE Bank
 - USACE Structure
 - USACE Facility
 - USACE Obstruction
 - USACE Other

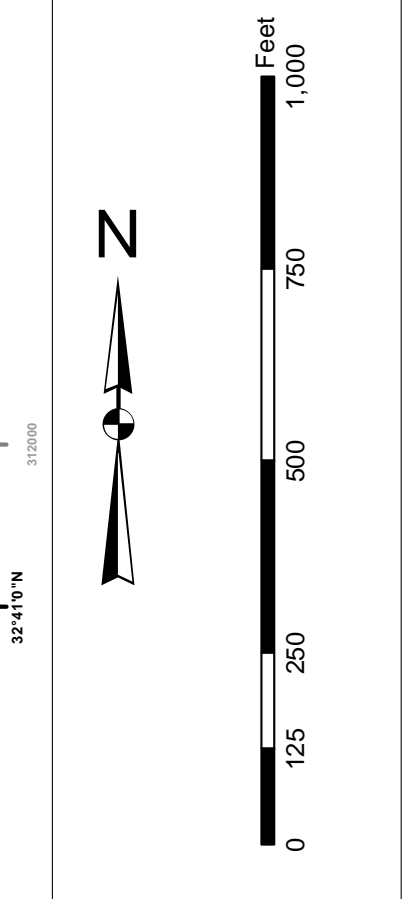
Designed by: Hydro Software v3.02	Creation Date: 23 Jun 2015
Reviewed by: 1:5000	Project Reference Number: 201506010
Reference scale: 1 inch = 250 feet	Survey Type: Single-beam Conduction Survey
Projection: NAD 1983 StatePlane South Carolina FIPS 3600 Feet Intl	

Charleston Entrance Channel Survey
 The information depicted on this map represents the results of surveys made on the dates indicated and shall not be used for navigation or other general purposes without first consulting the general conditions posted at that time.
 Concluded on: 18 June 2015
 Charleston, South Carolina



In accordance with the U.S. Army Corps of Engineers, Charleston District Office, Special Data Search be made for project, location, and other information to be used in the design of this project. If there are any other data available, they should be used in the design of this project. The information shown on this map is based on the data available at the time of the survey. The information shown on this map is not to be used for any other purpose. The information shown on this map is not to be used for any other purpose.

Production Notes:
1. This map is a production map.
2. This map is a production map.
3. This map is a production map.
4. This map is a production map.
5. This map is a production map.

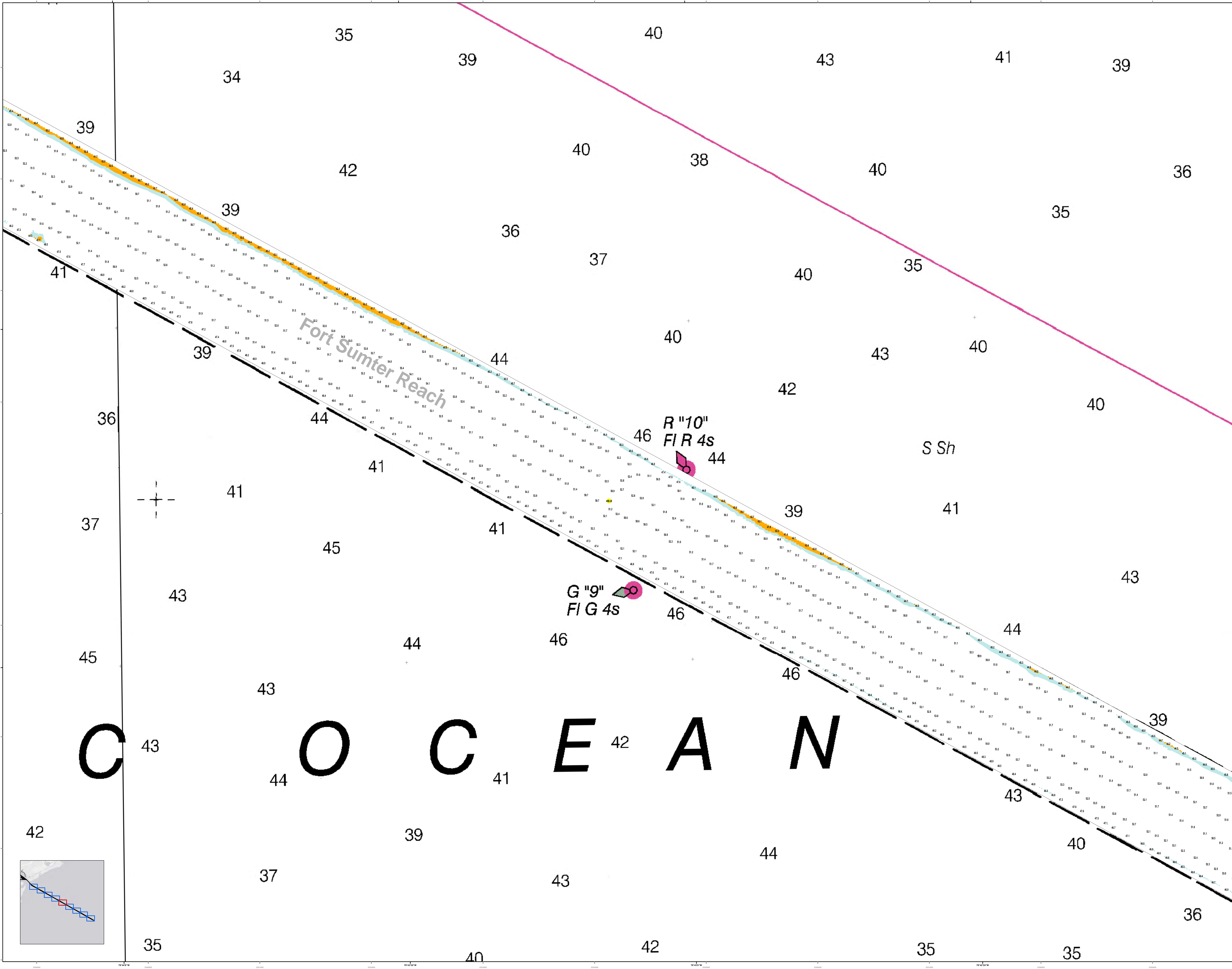


Legend

- Soundings:**
 - 1.1 to 1.5
 - 1.6 to 2.0
 - 2.1 to 2.5
 - 2.6 to 3.0
 - 3.1 to 3.5
 - 3.6 to 4.0
 - 4.1 to 4.5
 - 4.6 to 5.0
 - 5.1 to 5.5
 - 5.6 to 6.0
 - 6.1 to 6.5
 - 6.6 to 7.0
 - 7.1 to 7.5
 - 7.6 to 8.0
 - 8.1 to 8.5
 - 8.6 to 9.0
 - 9.1 to 9.5
 - 9.6 to 10.0
 - 10.1 to 10.5
 - 10.6 to 11.0
 - 11.1 to 11.5
 - 11.6 to 12.0
 - 12.1 to 12.5
 - 12.6 to 13.0
 - 13.1 to 13.5
 - 13.6 to 14.0
 - 14.1 to 14.5
 - 14.6 to 15.0
 - 15.1 to 15.5
 - 15.6 to 16.0
 - 16.1 to 16.5
 - 16.6 to 17.0
 - 17.1 to 17.5
 - 17.6 to 18.0
 - 18.1 to 18.5
 - 18.6 to 19.0
 - 19.1 to 19.5
 - 19.6 to 20.0
 - 20.1 to 20.5
 - 20.6 to 21.0
 - 21.1 to 21.5
 - 21.6 to 22.0
 - 22.1 to 22.5
 - 22.6 to 23.0
 - 23.1 to 23.5
 - 23.6 to 24.0
 - 24.1 to 24.5
 - 24.6 to 25.0
 - 25.1 to 25.5
 - 25.6 to 26.0
 - 26.1 to 26.5
 - 26.6 to 27.0
 - 27.1 to 27.5
 - 27.6 to 28.0
 - 28.1 to 28.5
 - 28.6 to 29.0
 - 29.1 to 29.5
 - 29.6 to 30.0
 - 30.1 to 30.5
 - 30.6 to 31.0
 - 31.1 to 31.5
 - 31.6 to 32.0
 - 32.1 to 32.5
 - 32.6 to 33.0
 - 33.1 to 33.5
 - 33.6 to 34.0
 - 34.1 to 34.5
 - 34.6 to 35.0
 - 35.1 to 35.5
 - 35.6 to 36.0
 - 36.1 to 36.5
 - 36.6 to 37.0
 - 37.1 to 37.5
 - 37.6 to 38.0
 - 38.1 to 38.5
 - 38.6 to 39.0
 - 39.1 to 39.5
 - 39.6 to 40.0
 - 40.1 to 40.5
 - 40.6 to 41.0
 - 41.1 to 41.5
 - 41.6 to 42.0
 - 42.1 to 42.5
 - 42.6 to 43.0
 - 43.1 to 43.5
 - 43.6 to 44.0
 - 44.1 to 44.5
 - 44.6 to 45.0
 - 45.1 to 45.5
 - 45.6 to 46.0
 - 46.1 to 46.5
 - 46.6 to 47.0
 - 47.1 to 47.5
 - 47.6 to 48.0
 - 48.1 to 48.5
 - 48.6 to 49.0
 - 49.1 to 49.5
 - 49.6 to 50.0
 - 50.1 to 50.5
 - 50.6 to 51.0
 - 51.1 to 51.5
 - 51.6 to 52.0
 - 52.1 to 52.5
 - 52.6 to 53.0
 - 53.1 to 53.5
 - 53.6 to 54.0
 - 54.1 to 54.5
 - 54.6 to 55.0
 - 55.1 to 55.5
 - 55.6 to 56.0
 - 56.1 to 56.5
 - 56.6 to 57.0
 - 57.1 to 57.5
 - 57.6 to 58.0
 - 58.1 to 58.5
 - 58.6 to 59.0
 - 59.1 to 59.5
 - 59.6 to 60.0
 - 60.1 to 60.5
 - 60.6 to 61.0
 - 61.1 to 61.5
 - 61.6 to 62.0
 - 62.1 to 62.5
 - 62.6 to 63.0
 - 63.1 to 63.5
 - 63.6 to 64.0
 - 64.1 to 64.5
 - 64.6 to 65.0
 - 65.1 to 65.5
 - 65.6 to 66.0
 - 66.1 to 66.5
 - 66.6 to 67.0
 - 67.1 to 67.5
 - 67.6 to 68.0
 - 68.1 to 68.5
 - 68.6 to 69.0
 - 69.1 to 69.5
 - 69.6 to 70.0
 - 70.1 to 70.5
 - 70.6 to 71.0
 - 71.1 to 71.5
 - 71.6 to 72.0
 - 72.1 to 72.5
 - 72.6 to 73.0
 - 73.1 to 73.5
 - 73.6 to 74.0
 - 74.1 to 74.5
 - 74.6 to 75.0
 - 75.1 to 75.5
 - 75.6 to 76.0
 - 76.1 to 76.5
 - 76.6 to 77.0
 - 77.1 to 77.5
 - 77.6 to 78.0
 - 78.1 to 78.5
 - 78.6 to 79.0
 - 79.1 to 79.5
 - 79.6 to 80.0
 - 80.1 to 80.5
 - 80.6 to 81.0
 - 81.1 to 81.5
 - 81.6 to 82.0
 - 82.1 to 82.5
 - 82.6 to 83.0
 - 83.1 to 83.5
 - 83.6 to 84.0
 - 84.1 to 84.5
 - 84.6 to 85.0
 - 85.1 to 85.5
 - 85.6 to 86.0
 - 86.1 to 86.5
 - 86.6 to 87.0
 - 87.1 to 87.5
 - 87.6 to 88.0
 - 88.1 to 88.5
 - 88.6 to 89.0
 - 89.1 to 89.5
 - 89.6 to 90.0
 - 90.1 to 90.5
 - 90.6 to 91.0
 - 91.1 to 91.5
 - 91.6 to 92.0
 - 92.1 to 92.5
 - 92.6 to 93.0
 - 93.1 to 93.5
 - 93.6 to 94.0
 - 94.1 to 94.5
 - 94.6 to 95.0
 - 95.1 to 95.5
 - 95.6 to 96.0
 - 96.1 to 96.5
 - 96.6 to 97.0
 - 97.1 to 97.5
 - 97.6 to 98.0
 - 98.1 to 98.5
 - 98.6 to 99.0
 - 99.1 to 99.5
 - 99.6 to 100.0
- USCGE Buoy:**
 - Red
 - Green
 - White
 - Black
 - Yellow
 - Orange
 - Purple
 - Blue
 - Light Blue
 - Dark Blue
- USCGE Light:**
 - Red
 - Green
 - White
 - Black
 - Yellow
 - Orange
 - Purple
 - Blue
 - Light Blue
 - Dark Blue
- USCGE Buoy:**
 - Red
 - Green
 - White
 - Black
 - Yellow
 - Orange
 - Purple
 - Blue
 - Light Blue
 - Dark Blue
- USCGE Light:**
 - Red
 - Green
 - White
 - Black
 - Yellow
 - Orange
 - Purple
 - Blue
 - Light Blue
 - Dark Blue
- USCGE Buoy:**
 - Red
 - Green
 - White
 - Black
 - Yellow
 - Orange
 - Purple
 - Blue
 - Light Blue
 - Dark Blue
- USCGE Light:**
 - Red
 - Green
 - White
 - Black
 - Yellow
 - Orange
 - Purple
 - Blue
 - Light Blue
 - Dark Blue

Designed by:	lehyfo Software v3.02	Creation Date:	23 Jun 2015
Reviewed by:	1:5000	Project Reference Number:	10000000
Reference scale:	1 inch = 250 feet	Survey Type:	Single-beam Conical Survey
Projection:	NAD 1983 StatePlane South Carolina FIPS 3600 Feet Intl		

Charleston Entrance Channel Survey
The information depicted on this map represents the results of surveys made on the dates indicated and shall not be used for any other purpose. The information shown on this map is not to be used for any other purpose.
Concluded on: 18 June 2015
Charleston, South Carolina

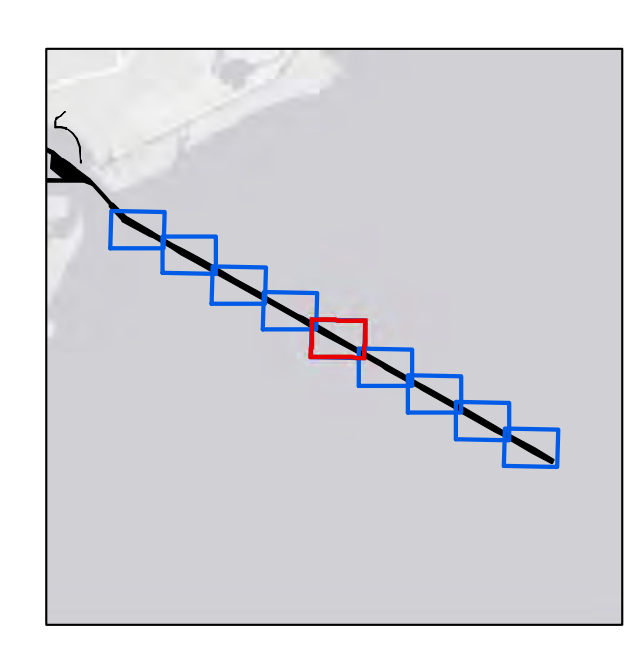


Fort Sumter Reach

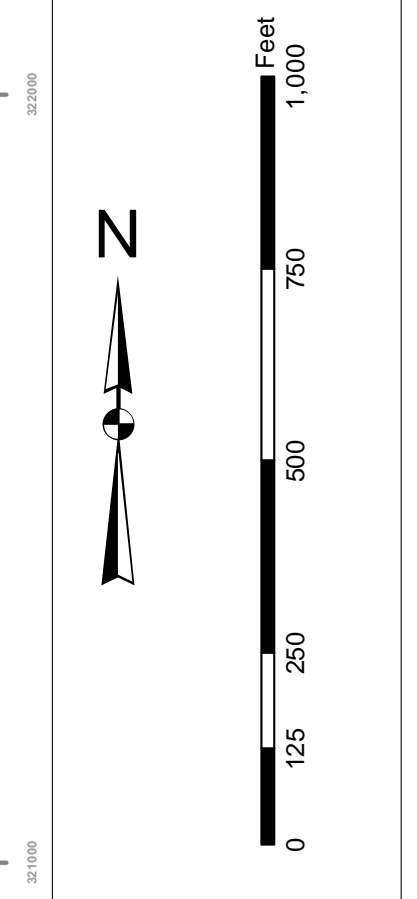
R "10"
FI R 4s

G "9"
FI G 4s

COCEAN



In the event that the U.S. Army Corps of Engineers, Charleston District Office, Special District Office, or District Engineer has approved a project, it does not constitute a warranty or a guarantee of accuracy, reliability, or completeness of the information provided. The user of this information is responsible for its use and for any consequences that may result from its use. The user is also responsible for obtaining all necessary permits and approvals from the appropriate authorities. The user is also responsible for obtaining all necessary information and data for the project. The user is also responsible for obtaining all necessary information and data for the project. The user is also responsible for obtaining all necessary information and data for the project.



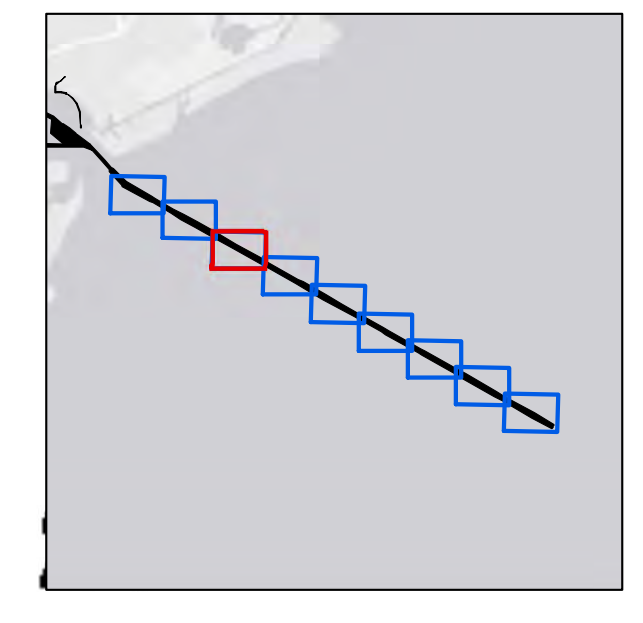
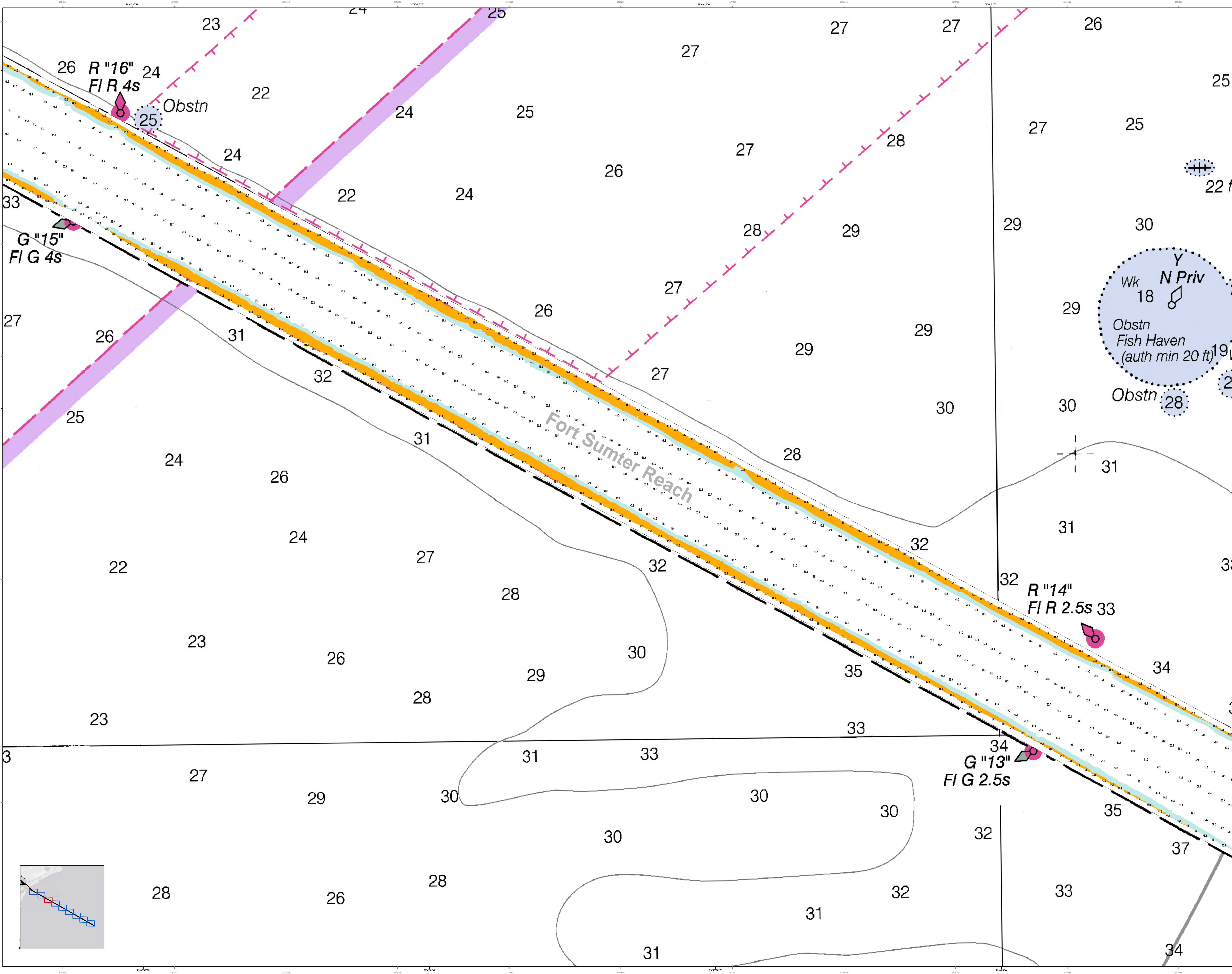
Legend

- Soundings:**
 - 2.0 to 2.9
 - 3.0 to 3.9
 - 4.0 to 4.9
 - 5.0 to 5.9
 - 6.0 to 6.9
 - 7.0 to 7.9
 - 8.0 to 8.9
 - 9.0 to 9.9
 - 10.0 to 10.9
 - 11.0 to 11.9
 - 12.0 to 12.9
 - 13.0 to 13.9
 - 14.0 to 14.9
 - 15.0 to 15.9
 - 16.0 to 16.9
 - 17.0 to 17.9
 - 18.0 to 18.9
 - 19.0 to 19.9
 - 20.0 to 20.9
 - 21.0 to 21.9
 - 22.0 to 22.9
 - 23.0 to 23.9
 - 24.0 to 24.9
 - 25.0 to 25.9
 - 26.0 to 26.9
 - 27.0 to 27.9
 - 28.0 to 28.9
 - 29.0 to 29.9
 - 30.0 to 30.9
 - 31.0 to 31.9
 - 32.0 to 32.9
 - 33.0 to 33.9
 - 34.0 to 34.9
 - 35.0 to 35.9
 - 36.0 to 36.9
 - 37.0 to 37.9
 - 38.0 to 38.9
 - 39.0 to 39.9
 - 40.0 to 40.9
 - 41.0 to 41.9
 - 42.0 to 42.9
 - 43.0 to 43.9
 - 44.0 to 44.9
 - 45.0 to 45.9
 - 46.0 to 46.9
 - 47.0 to 47.9
 - 48.0 to 48.9
 - 49.0 to 49.9
 - 50.0 to 50.9
 - 51.0 to 51.9
 - 52.0 to 52.9
 - 53.0 to 53.9
 - 54.0 to 54.9
 - 55.0 to 55.9
 - 56.0 to 56.9
 - 57.0 to 57.9
 - 58.0 to 58.9
 - 59.0 to 59.9
 - 60.0 to 60.9
 - 61.0 to 61.9
 - 62.0 to 62.9
 - 63.0 to 63.9
 - 64.0 to 64.9
 - 65.0 to 65.9
 - 66.0 to 66.9
 - 67.0 to 67.9
 - 68.0 to 68.9
 - 69.0 to 69.9
 - 70.0 to 70.9
 - 71.0 to 71.9
 - 72.0 to 72.9
 - 73.0 to 73.9
 - 74.0 to 74.9
 - 75.0 to 75.9
 - 76.0 to 76.9
 - 77.0 to 77.9
 - 78.0 to 78.9
 - 79.0 to 79.9
 - 80.0 to 80.9
 - 81.0 to 81.9
 - 82.0 to 82.9
 - 83.0 to 83.9
 - 84.0 to 84.9
 - 85.0 to 85.9
 - 86.0 to 86.9
 - 87.0 to 87.9
 - 88.0 to 88.9
 - 89.0 to 89.9
 - 90.0 to 90.9
 - 91.0 to 91.9
 - 92.0 to 92.9
 - 93.0 to 93.9
 - 94.0 to 94.9
 - 95.0 to 95.9
 - 96.0 to 96.9
 - 97.0 to 97.9
 - 98.0 to 98.9
 - 99.0 to 99.9
 - 100.0 to 100.9
 - 101.0 to 101.9
 - 102.0 to 102.9
 - 103.0 to 103.9
 - 104.0 to 104.9
 - 105.0 to 105.9
 - 106.0 to 106.9
 - 107.0 to 107.9
 - 108.0 to 108.9
 - 109.0 to 109.9
 - 110.0 to 110.9
 - 111.0 to 111.9
 - 112.0 to 112.9
 - 113.0 to 113.9
 - 114.0 to 114.9
 - 115.0 to 115.9
 - 116.0 to 116.9
 - 117.0 to 117.9
 - 118.0 to 118.9
 - 119.0 to 119.9
 - 120.0 to 120.9
 - 121.0 to 121.9
 - 122.0 to 122.9
 - 123.0 to 123.9
 - 124.0 to 124.9
 - 125.0 to 125.9
 - 126.0 to 126.9
 - 127.0 to 127.9
 - 128.0 to 128.9
 - 129.0 to 129.9
 - 130.0 to 130.9
 - 131.0 to 131.9
 - 132.0 to 132.9
 - 133.0 to 133.9
 - 134.0 to 134.9
 - 135.0 to 135.9
 - 136.0 to 136.9
 - 137.0 to 137.9
 - 138.0 to 138.9
 - 139.0 to 139.9
 - 140.0 to 140.9
 - 141.0 to 141.9
 - 142.0 to 142.9
 - 143.0 to 143.9
 - 144.0 to 144.9
 - 145.0 to 145.9
 - 146.0 to 146.9
 - 147.0 to 147.9
 - 148.0 to 148.9
 - 149.0 to 149.9
 - 150.0 to 150.9
 - 151.0 to 151.9
 - 152.0 to 152.9
 - 153.0 to 153.9
 - 154.0 to 154.9
 - 155.0 to 155.9
 - 156.0 to 156.9
 - 157.0 to 157.9
 - 158.0 to 158.9
 - 159.0 to 159.9
 - 160.0 to 160.9
 - 161.0 to 161.9
 - 162.0 to 162.9
 - 163.0 to 163.9
 - 164.0 to 164.9
 - 165.0 to 165.9
 - 166.0 to 166.9
 - 167.0 to 167.9
 - 168.0 to 168.9
 - 169.0 to 169.9
 - 170.0 to 170.9
 - 171.0 to 171.9
 - 172.0 to 172.9
 - 173.0 to 173.9
 - 174.0 to 174.9
 - 175.0 to 175.9
 - 176.0 to 176.9
 - 177.0 to 177.9
 - 178.0 to 178.9
 - 179.0 to 179.9
 - 180.0 to 180.9
 - 181.0 to 181.9
 - 182.0 to 182.9
 - 183.0 to 183.9
 - 184.0 to 184.9
 - 185.0 to 185.9
 - 186.0 to 186.9
 - 187.0 to 187.9
 - 188.0 to 188.9
 - 189.0 to 189.9
 - 190.0 to 190.9
 - 191.0 to 191.9
 - 192.0 to 192.9
 - 193.0 to 193.9
 - 194.0 to 194.9
 - 195.0 to 195.9
 - 196.0 to 196.9
 - 197.0 to 197.9
 - 198.0 to 198.9
 - 199.0 to 199.9
 - 200.0 to 200.9
 - 201.0 to 201.9
 - 202.0 to 202.9
 - 203.0 to 203.9
 - 204.0 to 204.9
 - 205.0 to 205.9
 - 206.0 to 206.9
 - 207.0 to 207.9
 - 208.0 to 208.9
 - 209.0 to 209.9
 - 210.0 to 210.9
 - 211.0 to 211.9
 - 212.0 to 212.9
 - 213.0 to 213.9
 - 214.0 to 214.9
 - 215.0 to 215.9
 - 216.0 to 216.9
 - 217.0 to 217.9
 - 218.0 to 218.9
 - 219.0 to 219.9
 - 220.0 to 220.9
 - 221.0 to 221.9
 - 222.0 to 222.9
 - 223.0 to 223.9
 - 224.0 to 224.9
 - 225.0 to 225.9
 - 226.0 to 226.9
 - 227.0 to 227.9
 - 228.0 to 228.9
 - 229.0 to 229.9
 - 230.0 to 230.9
 - 231.0 to 231.9
 - 232.0 to 232.9
 - 233.0 to 233.9
 - 234.0 to 234.9
 - 235.0 to 235.9
 - 236.0 to 236.9
 - 237.0 to 237.9
 - 238.0 to 238.9
 - 239.0 to 239.9
 - 240.0 to 240.9
 - 241.0 to 241.9
 - 242.0 to 242.9
 - 243.0 to 243.9
 - 244.0 to 244.9
 - 245.0 to 245.9
 - 246.0 to 246.9
 - 247.0 to 247.9
 - 248.0 to 248.9
 - 249.0 to 249.9
 - 250.0 to 250.9
 - 251.0 to 251.9
 - 252.0 to 252.9
 - 253.0 to 253.9
 - 254.0 to 254.9
 - 255.0 to 255.9
 - 256.0 to 256.9
 - 257.0 to 257.9
 - 258.0 to 258.9
 - 259.0 to 259.9
 - 260.0 to 260.9
 - 261.0 to 261.9
 - 262.0 to 262.9
 - 263.0 to 263.9
 - 264.0 to 264.9
 - 265.0 to 265.9
 - 266.0 to 266.9
 - 267.0 to 267.9
 - 268.0 to 268.9
 - 269.0 to 269.9
 - 270.0 to 270.9
 - 271.0 to 271.9
 - 272.0 to 272.9
 - 273.0 to 273.9
 - 274.0 to 274.9
 - 275.0 to 275.9
 - 276.0 to 276.9
 - 277.0 to 277.9
 - 278.0 to 278.9
 - 279.0 to 279.9
 - 280.0 to 280.9
 - 281.0 to 281.9
 - 282.0 to 282.9
 - 283.0 to 283.9
 - 284.0 to 284.9
 - 285.0 to 285.9
 - 286.0 to 286.9
 - 287.0 to 287.9
 - 288.0 to 288.9
 - 289.0 to 289.9
 - 290.0 to 290.9
 - 291.0 to 291.9
 - 292.0 to 292.9
 - 293.0 to 293.9
 - 294.0 to 294.9
 - 295.0 to 295.9
 - 296.0 to 296.9
 - 297.0 to 297.9
 - 298.0 to 298.9
 - 299.0 to 299.9
 - 300.0 to 300.9
 - 301.0 to 301.9
 - 302.0 to 302.9
 - 303.0 to 303.9
 - 304.0 to 304.9
 - 305.0 to 305.9
 - 306.0 to 306.9
 - 307.0 to 307.9
 - 308.0 to 308.9
 - 309.0 to 309.9
 - 310.0 to 310.9
 - 311.0 to 311.9
 - 312.0 to 312.9
 - 313.0 to 313.9
 - 314.0 to 314.9
 - 315.0 to 315.9
 - 316.0 to 316.9
 - 317.0 to 317.9
 - 318.0 to 318.9
 - 319.0 to 319.9
 - 320.0 to 320.9
 - 321.0 to 321.9
 - 322.0 to 322.9
 - 323.0 to 323.9
 - 324.0 to 324.9
 - 325.0 to 325.9
 - 326.0 to 326.9
 - 327.0 to 327.9
 - 328.0 to 328.9
 - 329.0 to 329.9
 - 330.0 to 330.9
 - 331.0 to 331.9
 - 332.0 to 332.9
 - 333.0 to 333.9
 - 334.0 to 334.9
 - 335.0 to 335.9
 - 336.0 to 336.9
 - 337.0 to 337.9
 - 338.0 to 338.9
 - 339.0 to 339.9
 - 340.0 to 340.9
 - 341.0 to 341.9
 - 342.0 to 342.9
 - 343.0 to 343.9
 - 344.0 to 344.9
 - 345.0 to 345.9
 - 346.0 to 346.9
 - 347.0 to 347.9
 - 348.0 to 348.9
 - 349.0 to 349.9
 - 350.0 to 350.9
 - 351.0 to 351.9
 - 352.0 to 352.9
 - 353.0 to 353.9
 - 354.0 to 354.9
 "13"

- Obstructions:**
- Obstn
- Obstn Fish Haven (auth min 20 ft)
- Obstn
- Other Features:**
- Wk 18
- N Priv
- Y
- 19W

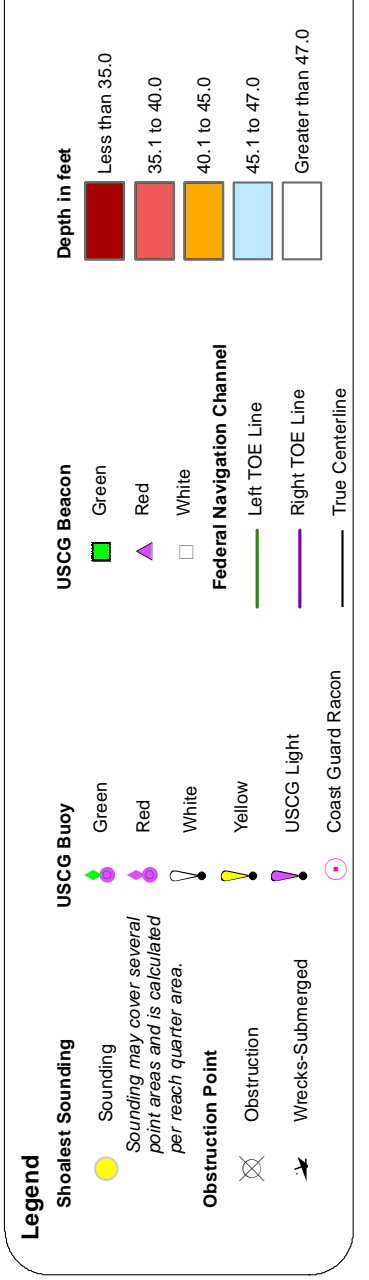
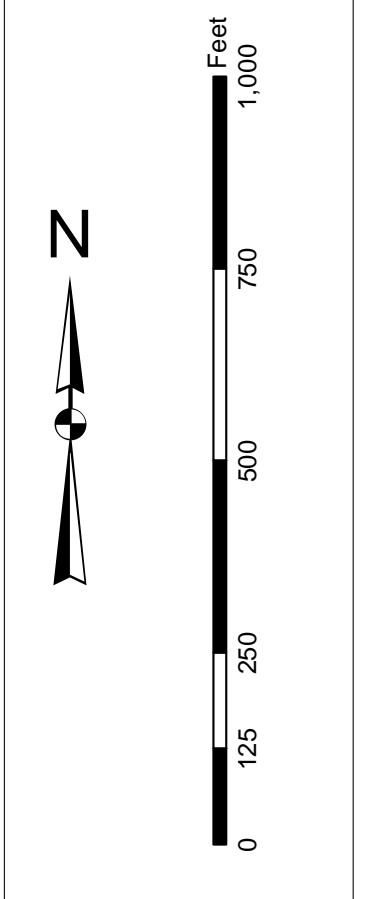
Designed by:	CECAC-GIS/SUBAREA-ARMY-01L
Reviewed by:	CECAC-GIS/SUBAREA-ARMY-01L
Checked by:	CECAC-GIS/SUBAREA-ARMY-01L
Approved by:	CECAC-GIS/SUBAREA-ARMY-01L
Project Reference Number:	15000
Survey Type:	Single-beam Bathymetry
Scale:	1 inch = 250 feet
Projection:	NAD 1983 StatePlane South Carolina FIPS 3200 Feet Intl
Creation Date:	23 Jun 2015 12:25 JUN 2015
Design Date:	23 Jun 2015
Software:	Hydro Software v3.02

Charleston Entrance Channel Survey
The information depicted on this map represents the results of surveys made on the dates indicated and shall not be used for any purpose other than the general conditions existing at that time.
Concluded on: 18 June 2015
Charleston, South Carolina



In accordance with the U.S. Army Corps of Engineers, Charleston District Office, Special Plans Section, the information depicted on this map represents the results of surveys made on the dates indicated and conditions existing at that time. The information is for general reference only and is not intended to be used for navigation. It is the responsibility of the user to verify the information and to use it as a guide only. The information is not to be used for navigation. It is the responsibility of the user to verify the information and to use it as a guide only. The information is not to be used for navigation. It is the responsibility of the user to verify the information and to use it as a guide only.

Projections:
1. North Carolina State Plane
2. State Plane
3. State Plane
4. State Plane
5. State Plane
6. State Plane
7. State Plane
8. State Plane
9. State Plane
10. State Plane
11. State Plane
12. State Plane
13. State Plane
14. State Plane
15. State Plane
16. State Plane
17. State Plane
18. State Plane
19. State Plane
20. State Plane
21. State Plane
22. State Plane
23. State Plane
24. State Plane
25. State Plane
26. State Plane
27. State Plane
28. State Plane
29. State Plane
30. State Plane
31. State Plane
32. State Plane
33. State Plane
34. State Plane
35. State Plane
36. State Plane
37. State Plane
38. State Plane
39. State Plane
40. State Plane
41. State Plane
42. State Plane
43. State Plane
44. State Plane
45. State Plane
46. State Plane
47. State Plane
48. State Plane
49. State Plane
50. State Plane
51. State Plane
52. State Plane
53. State Plane
54. State Plane
55. State Plane
56. State Plane
57. State Plane
58. State Plane
59. State Plane
60. State Plane
61. State Plane
62. State Plane
63. State Plane
64. State Plane
65. State Plane
66. State Plane
67. State Plane
68. State Plane
69. State Plane
70. State Plane
71. State Plane
72. State Plane
73. State Plane
74. State Plane
75. State Plane
76. State Plane
77. State Plane
78. State Plane
79. State Plane
80. State Plane
81. State Plane
82. State Plane
83. State Plane
84. State Plane
85. State Plane
86. State Plane
87. State Plane
88. State Plane
89. State Plane
90. State Plane
91. State Plane
92. State Plane
93. State Plane
94. State Plane
95. State Plane
96. State Plane
97. State Plane
98. State Plane
99. State Plane
100. State Plane



Designed by:	CECAC-GIS/SLUSACE-ARMY MIL
U.S. Army District Engineer:	CHARLESTON DISTRICT
Project Reference Number:	13-000
Survey Type:	Single-beam Bathymetry
Scale:	1 inch = 250 feet
Projection:	NAD 1983 StatePlane South Carolina FIPS 3800 Feet Intl
Creation Date:	23 JUN 2015
Design Date:	23 JUN 2015
Software:	Hydro Software v3.82

Charleston Entrance Channel Survey
The information depicted on this map represents the results of surveys made on the dates indicated and conditions existing at that time.
Concluded on: 18 June 2015
Charleston, South Carolina

