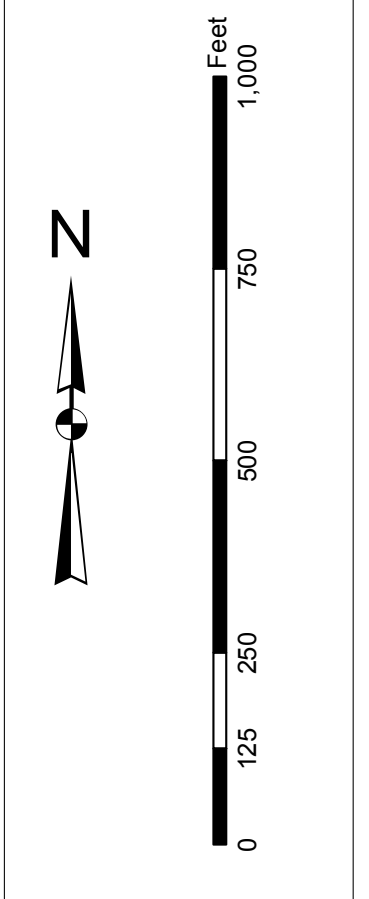


**Production Notes:**

1. This chart is a preliminary production and is subject to change without notice.
2. This chart is based on the latest available data.
3. Soundings are in feet and meters.
4. All depths are based on Mean Lower Low Water (MLLW).
5. All depths are based on the datum of 1983.
6. All depths are based on the datum of 1983.
7. All depths are based on the datum of 1983.
8. All depths are based on the datum of 1983.
9. All depths are based on the datum of 1983.
10. All depths are based on the datum of 1983.



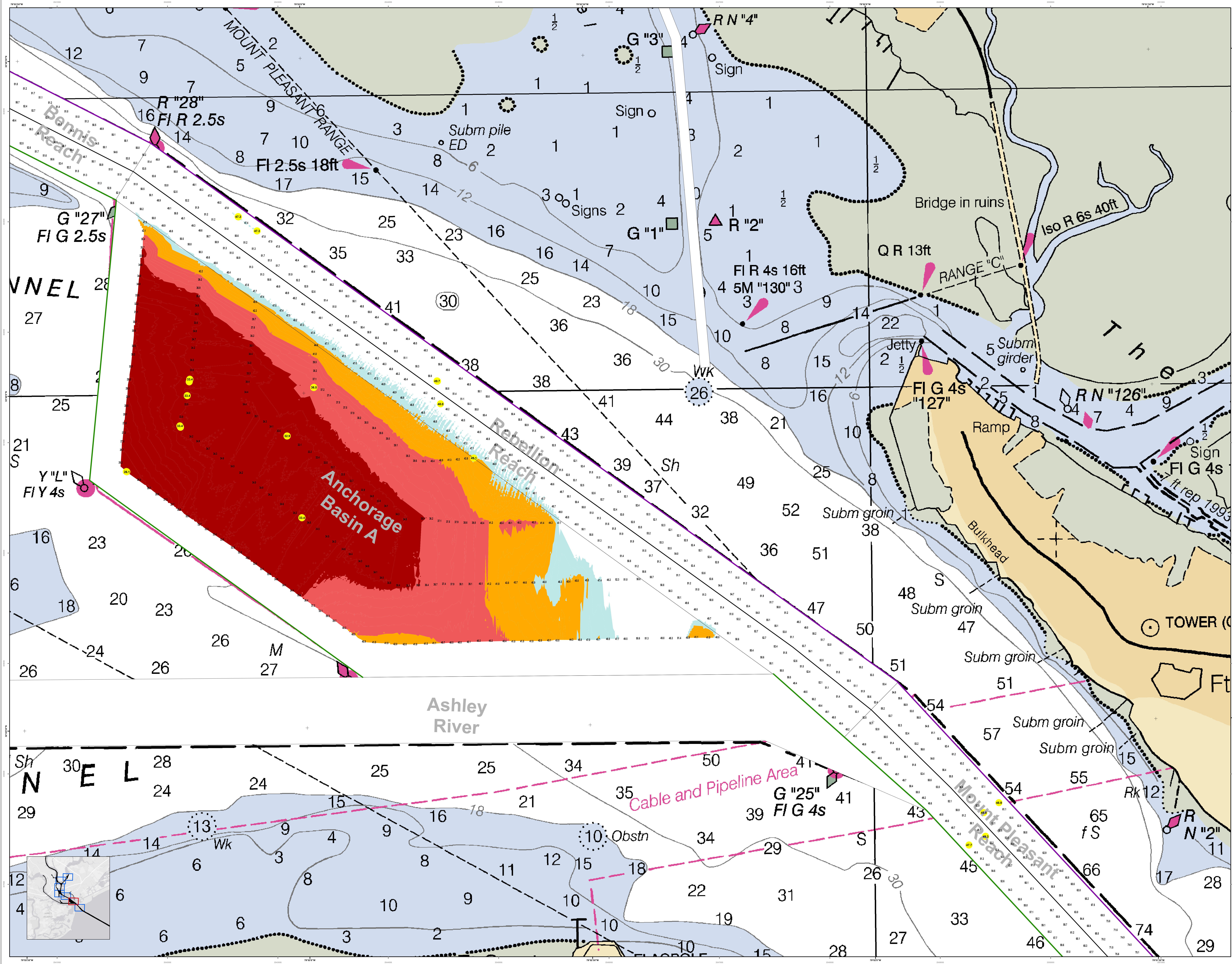
**Legend:**

Symbol/Color	Description
Blue line	Channel
Green line	Submerged Groin
Red line	Obstruction
Black line	Structure
Yellow line	Shoal
White line	Other

<b>Designed by:</b>	U.S. Army Corps of Engineers Charleston District Charleston, South Carolina
<b>Reviewed by:</b>	U.S. Army Corps of Engineers Charleston District Charleston, South Carolina
<b>Checked by:</b>	U.S. Army Corps of Engineers Charleston District Charleston, South Carolina
<b>Approved by:</b>	U.S. Army Corps of Engineers Charleston District Charleston, South Carolina
<b>Design Date:</b>	29 Jan 2015
<b>Project Reference Number:</b>	15C002
<b>Survey Type:</b>	Single-beam
<b>Scale:</b>	1 inch = 250 feet
<b>Projection:</b>	NAD 1983 StatePlane South Carolina FIPS 3200 Feet

**Charleston Lower Harbor Channel**  
The information depicted on this map represents the results of surveys made on the dates indicated and is not intended to be used for navigation. All depths are based on the datum of 1983. Concluded on: 15 January 2015





**U.S. Army Corps of Engineers**  
Charleston District

**Legend**

- Soundings: Depth in feet
- Obstructions: Obstruction
- Navigation Aids: Light, Buoy, etc.
- Infrastructure: Bridge, Jetty, etc.
- Other: Cable and Pipeline Area, etc.

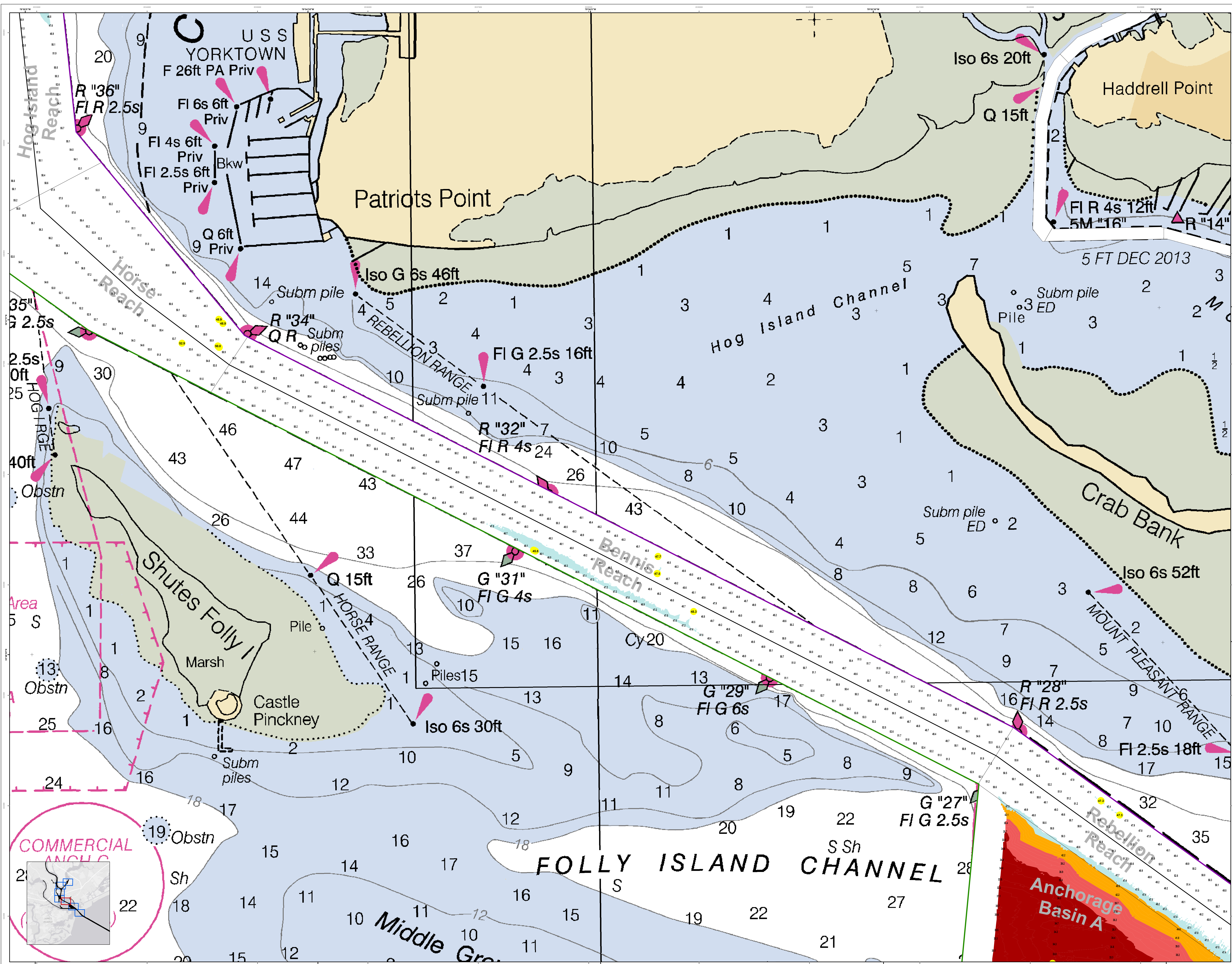
**Design Data**

Designed by:	U.S. Army Corps of Engineers
Reviewed by:	U.S. Army Corps of Engineers
Project Reference Number:	13-000
Survey Type:	Single-beam Condition
Reference Scale:	1 inch = 250 feet
Projection:	NAD 1983 StatePlane South Carolina FIPS 3200 Feet

**Charleston Harbor Channel**  
The information depicted on this map represents the results of surveys made on the dates indicated and can only be used for general information purposes. It is not intended for navigation. Concluded on: 15 January 2015

**SHEET REFERENCE NUMBER**  
C002  
SHEET 2 OF 7





**U.S. Army Corps of Engineers**  
Charleston District

**Legend**

- Soundings: Depth contours (Iso 6s 20ft, etc.)
- Obstructions: Obstrn (red triangle), Obstrn (black circle)
- Navigation Aids: Light (G "31" FIG 4s), Buoy (R "36", R "34", R "32", R "28", Q 15ft)
- Submersible Piles: Subm pile ED (black circle)
- Other: Crab Bank, Shutes Folly I Marsh, USS Yorktown

**Scale:** 1 inch = 250 feet

**Projection:** NAD 1983 StatePlane South Carolina FIPS 3200 Feet

**Design Date:** 29 Jan 2015  
**Creation Date:** 30 Jan 2015  
**Project Reference Number:** 15C000  
**Survey Type:** Single-beam Condition

**U.S. Army District Engineer**  
 CHARLESTON DISTRICT  
 CHARLESTON, SOUTH CAROLINA

**Branch:** SAVANNAH BRANCH  
 SAVANNAH, GEORGIA

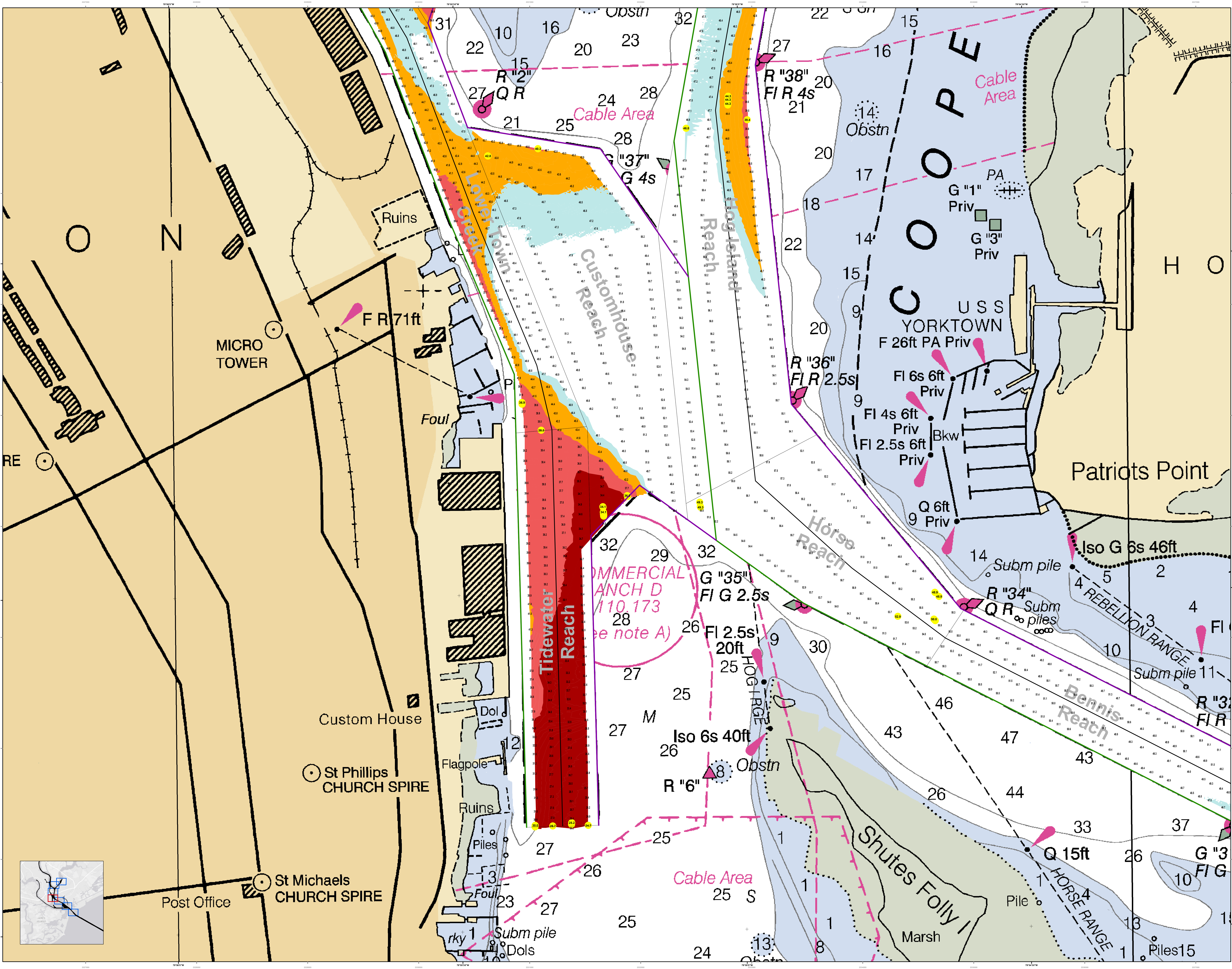
**Project:** CESAC-GIS/USACE ARMY MIL

**Charleston Lower Harbor Channel**  
 The information depicted on this map represents the results of surveys made on the dates indicated and call on other charts for general information and conditions existing at that time.  
 Concluded on: 15 January 2015

Charleston, South Carolina

**SHEET REFERENCE NUMBER:** C002  
**SHEET 3 OF 7**





U.S. Army Corps of Engineers  
Charleston District

**Legend**

- Soundings: 10, 15, 20, 25, 30, 35, 40, 45, 50, 55, 60, 65, 70, 75, 80, 85, 90, 95, 100, 105, 110, 115, 120, 125, 130, 135, 140, 145, 150, 155, 160, 165, 170, 175, 180, 185, 190, 195, 200, 205, 210, 215, 220, 225, 230, 235, 240, 245, 250, 255, 260, 265, 270, 275, 280, 285, 290, 295, 300, 305, 310, 315, 320, 325, 330, 335, 340, 345, 350, 355, 360, 365, 370, 375, 380, 385, 390, 395, 400, 405, 410, 415, 420, 425, 430, 435, 440, 445, 450, 455, 460, 465, 470, 475, 480, 485, 490, 495, 500, 505, 510, 515, 520, 525, 530, 535, 540, 545, 550, 555, 560, 565, 570, 575, 580, 585, 590, 595, 600, 605, 610, 615, 620, 625, 630, 635, 640, 645, 650, 655, 660, 665, 670, 675, 680, 685, 690, 695, 700, 705, 710, 715, 720, 725, 730, 735, 740, 745, 750, 755, 760, 765, 770, 775, 780, 785, 790, 795, 800, 805, 810, 815, 820, 825, 830, 835, 840, 845, 850, 855, 860, 865, 870, 875, 880, 885, 890, 895, 900, 905, 910, 915, 920, 925, 930, 935, 940, 945, 950, 955, 960, 965, 970, 975, 980, 985, 990, 995, 1000
- Obstructions: Obstn, PA, Bkw, Subm pile
- Navigation Aids: R '2', R '38', G '37', G '35', R '36', R '34', R '3', R '6', Iso 6s 40ft, Iso G 6s 46ft, FI 6s 6ft, FI 4s 6ft, FI 2.5s 6ft, Q 15ft, G '3' FI G
- Other: Ruins, Custom House, St Phillips Church Spire, St Michaels Church Spire, Post Office, MICRO TOWER, Foul, Flagpole, Piles, Dols, rky 1, Subm pile, Dols, Marsh, Shutes Folly I, HORSE RANGE 1, REBELLION RANGE, Bennis Reach, Hog Island Reach, Custom Reach, Tidewater Reach, Horse Reach, Cable Area

**Scale**  
0 100 200 300 400 500 600 700 800 900 1000 Feet

**Metadata**

Designed by:	U.S. Army Corps of Engineers District of South Carolina
Reviewed by:	U.S. Army Corps of Engineers District of South Carolina
Reference scale:	1 inch = 250 feet
Projection:	NAD 1983 StatePlane South Carolina FIPS 3200 Feet
Creation Date:	30 JAN 2015
Design Date:	29 JAN 2015
Project Reference Number:	13C000
Survey Type:	Hydrographic
Survey Year:	2010
Single-beam Condition:	

**Charleston Lower Harbor Channel**  
The information depicted on this map represents the results of surveys made on the dates indicated and can only be used for the purposes for which the general conditions existing at that time.  
Concluded on: 15 January 2015

Charleston, South Carolina

SHEET REFERENCE NUMBER  
C002  
SHEET 4 OF 7

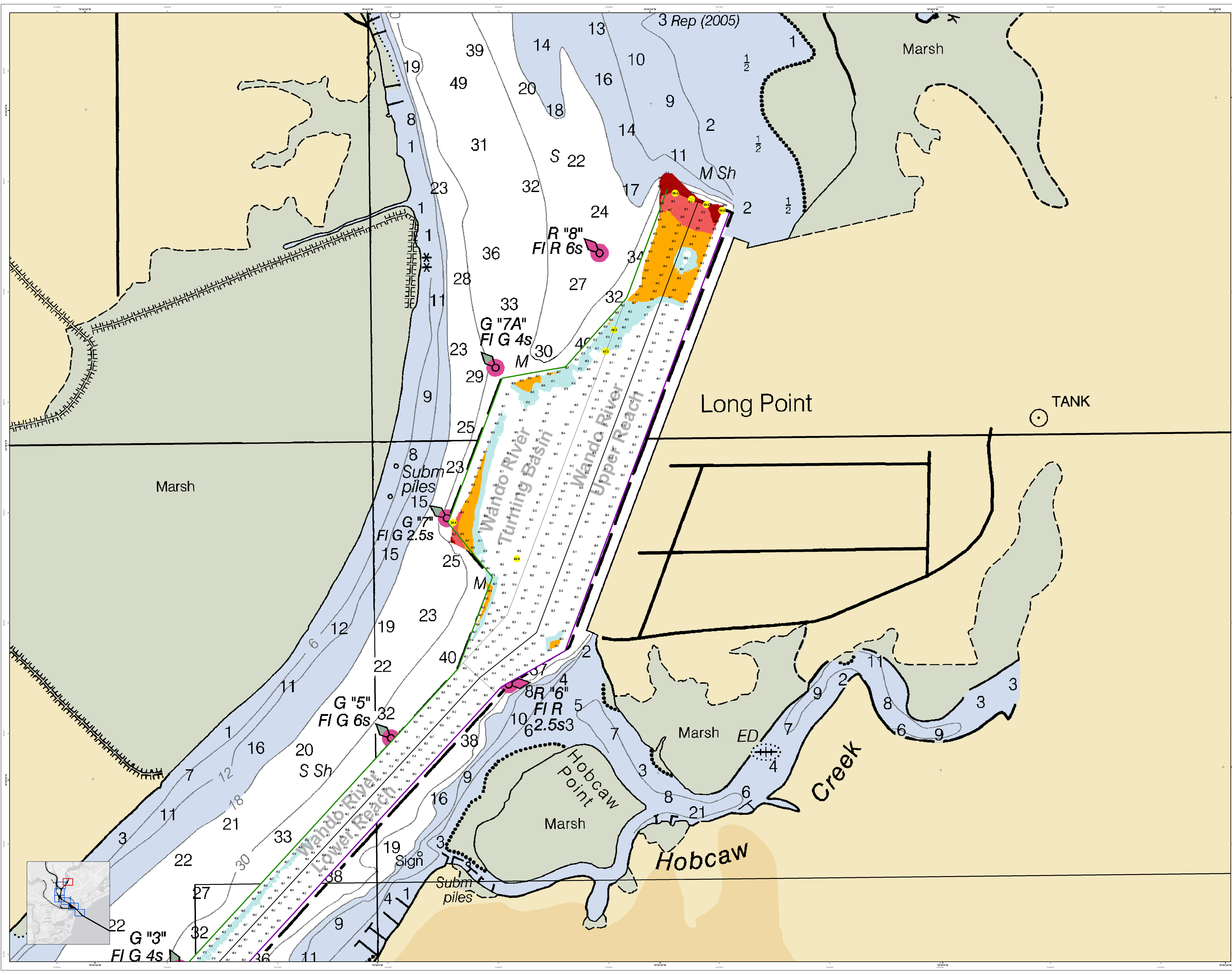




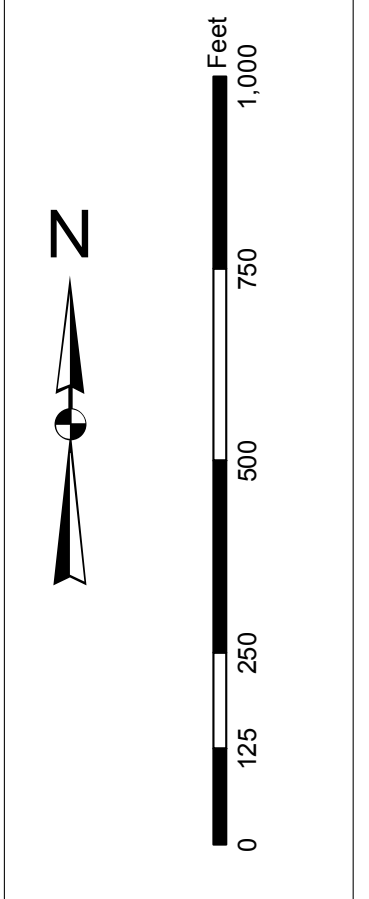








**Disclaimer:**  
This map was prepared by the U.S. Army Corps of Engineers, Charleston District Office. Special data should be made for project, contract, or other specific purposes. This map is not to be used for navigation. The information on this map is based on the most recent available data. The Corps of Engineers does not warrant the accuracy or completeness of the information on this map. Users are encouraged to use all prudent safety measures.



**Legend:**

Depth Soundings	Color
1-10	Red
11-20	Orange
21-30	Yellow
31-40	Light Green
41-50	Green
51-60	Dark Green
61-70	Blue-Green
71-80	Blue
81-90	Dark Blue
91-100	Very Dark Blue

**Navigation Aids:**

- Red Buoy
- Green Buoy
- Yellow Buoy
- White Buoy
- Black Buoy
- Black and White Buoy
- Black and Red Buoy
- Black and Green Buoy
- Black and Yellow Buoy
- Black and Blue Buoy
- Black and Very Dark Blue Buoy

**Other Symbols:**

- Subm. Piles
- Sign
- Tank
- Marsh
- Long Point
- Hobcaw Point
- Hobcaw Creek

Designed by:	Hydro Software v3.8	Design date:	29 Jan 2015	Creation Date:	30 JAN 2015
Reviewed by:	Absolute scale	Project Reference Number:	13000	Survey Type:	Single-beam Condition
Reference scale:	1 inch = 250 feet	Projection:	NAD 1983 StatePlane South Carolina FIPS 3600 Feet		

**Charleston Lower Harbor Channel**  
The information depicted on this map represents the results of surveys made on the dates indicated and shall not be used for navigation. The general conditions existing at that time.  
Concluded on: 15 January 2015  
Charleston, South Carolina