

U.S. Army Corps of Engineers
Charleston District

Project Name: Charleston Harbor Channel
Project Reference Number: 12MAY2015
Scale: 1:25,000
Reference Date: 12 MAY 2015
Projection: NAD 1983 StatePlane South Carolina FIPS 3200 Feet

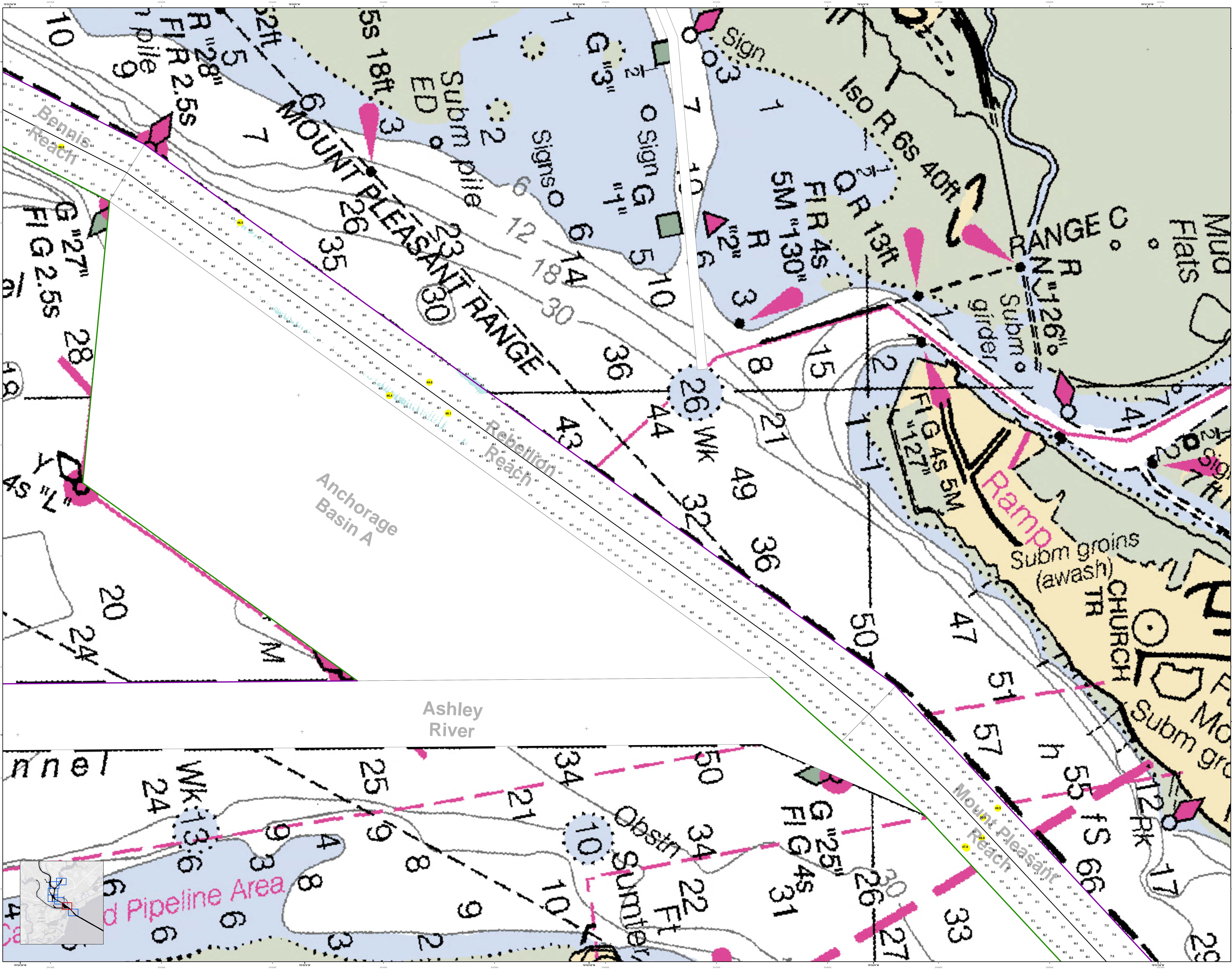
Designed by: U.S. Army Corps of Engineers
Reviewed by: U.S. Army Corps of Engineers
Scale: 1:25,000
Reference Date: 12 MAY 2015
Projection: NAD 1983 StatePlane South Carolina FIPS 3200 Feet

Legend:

- Depth Soundings: 1, 2, 3, 4, 5, 6, 7, 8, 9, 10, 11, 12, 13, 14, 15, 16, 17, 18, 19, 20, 21, 22, 23, 24, 25, 26, 27, 28, 29, 30, 31, 32, 33, 34, 35, 36, 37, 38, 39, 40, 41, 42, 43, 44, 45, 46, 47, 48, 49, 50, 51, 52, 53, 54, 55, 56, 57, 58, 59, 60, 61, 62, 63, 64, 65, 66, 67, 68, 69, 70, 71, 72, 73, 74, 75, 76, 77, 78, 79, 80, 81, 82, 83, 84, 85, 86, 87, 88, 89, 90, 91, 92, 93, 94, 95, 96, 97, 98, 99, 100
- Obstruction: 1, 2, 3, 4, 5, 6, 7, 8, 9, 10, 11, 12, 13, 14, 15, 16, 17, 18, 19, 20, 21, 22, 23, 24, 25, 26, 27, 28, 29, 30, 31, 32, 33, 34, 35, 36, 37, 38, 39, 40, 41, 42, 43, 44, 45, 46, 47, 48, 49, 50, 51, 52, 53, 54, 55, 56, 57, 58, 59, 60, 61, 62, 63, 64, 65, 66, 67, 68, 69, 70, 71, 72, 73, 74, 75, 76, 77, 78, 79, 80, 81, 82, 83, 84, 85, 86, 87, 88, 89, 90, 91, 92, 93, 94, 95, 96, 97, 98, 99, 100
- Navigation Line: 1, 2, 3, 4, 5, 6, 7, 8, 9, 10, 11, 12, 13, 14, 15, 16, 17, 18, 19, 20, 21, 22, 23, 24, 25, 26, 27, 28, 29, 30, 31, 32, 33, 34, 35, 36, 37, 38, 39, 40, 41, 42, 43, 44, 45, 46, 47, 48, 49, 50, 51, 52, 53, 54, 55, 56, 57, 58, 59, 60, 61, 62, 63, 64, 65, 66, 67, 68, 69, 70, 71, 72, 73, 74, 75, 76, 77, 78, 79, 80, 81, 82, 83, 84, 85, 86, 87, 88, 89, 90, 91, 92, 93, 94, 95, 96, 97, 98, 99, 100

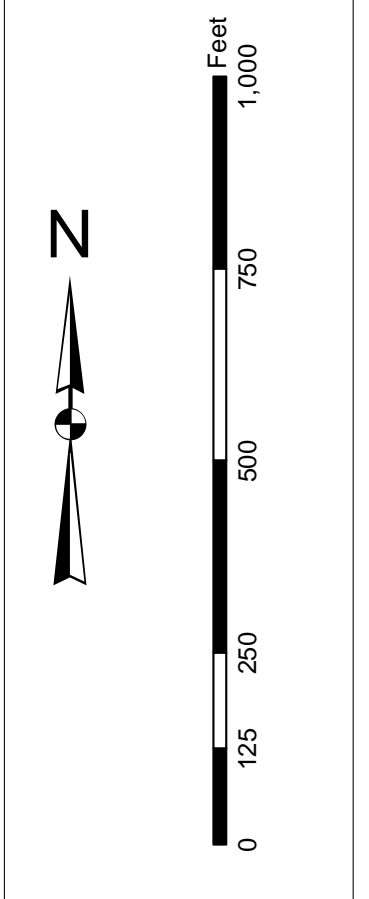
Charleston Lower Harbor Channel
The information depicted on this map represents the results of surveys made on the dates indicated and shall not be used for navigation unless the general conditions existing at that time.
Concluded on: 24 April 2015
Charleston, South Carolina

SHEET REFERENCE NUMBER: C002
SHEET 1 OF 7



In the event that the U.S. Army Corps of Engineers, Charleston District Office, Special Operations Unit, is unable to provide the information requested, the user should contact the appropriate authority for the information requested. The information provided is for general information only and is not intended to be used for navigation. The user is encouraged to use all prudent safety measures.

Projections: NAD 83 StatePlane South Carolina FIPS 3200 Feet
Datum: NAVD 83
Units: Feet
Scale: 1 inch = 250 feet

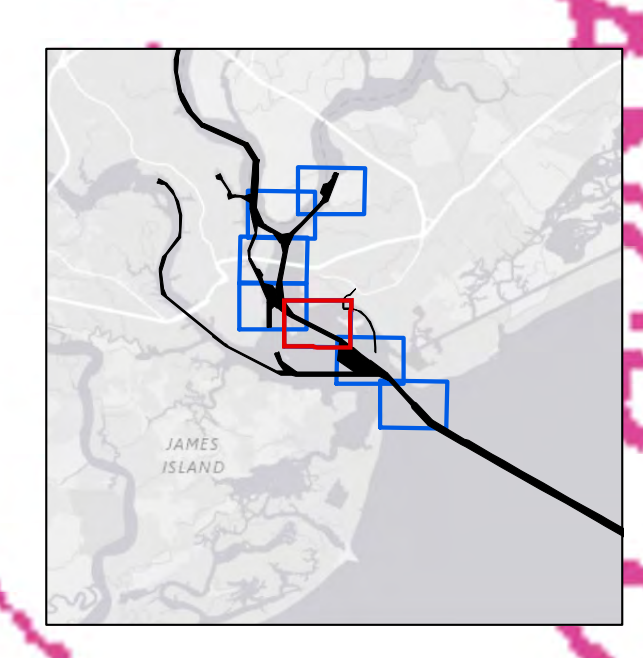
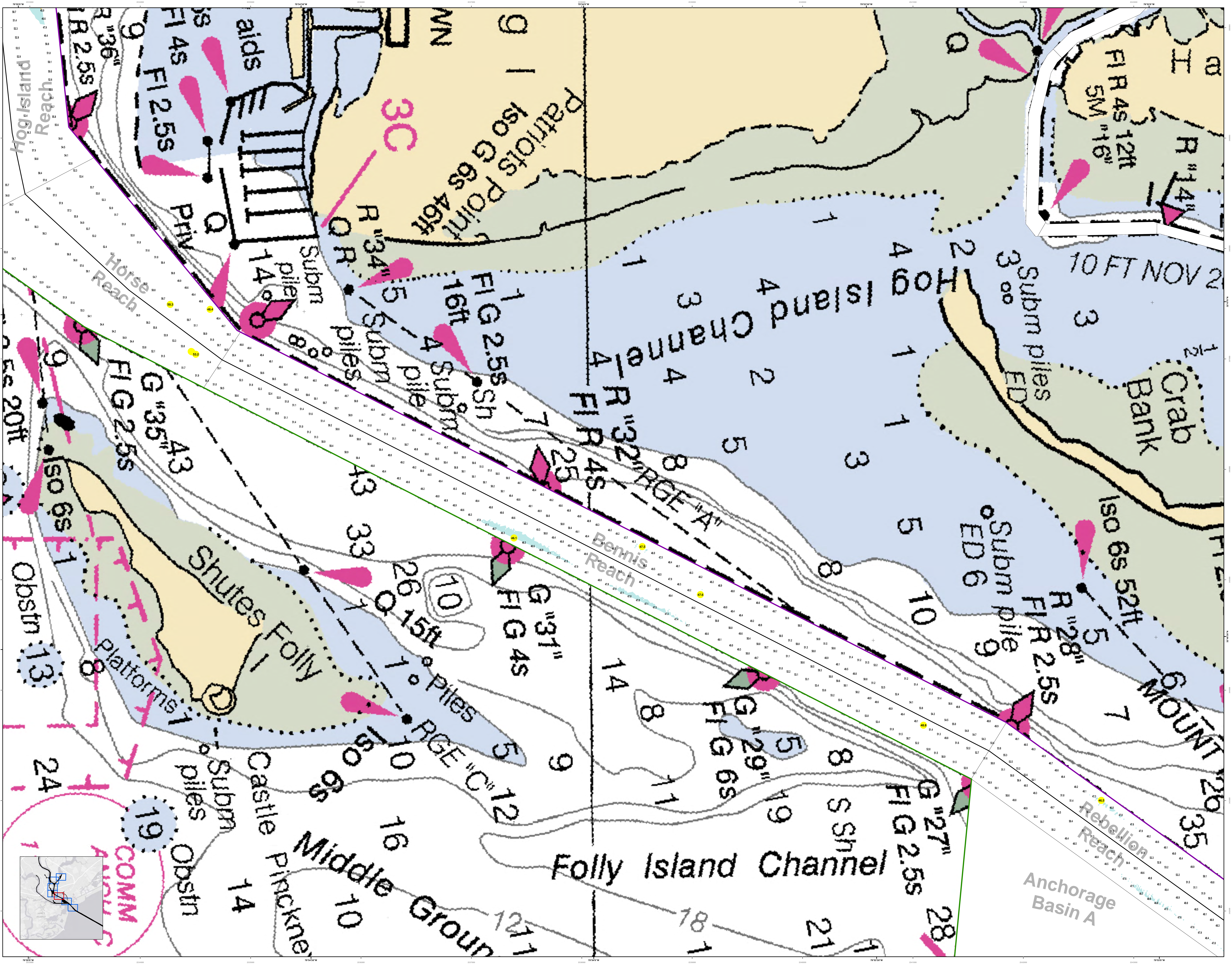


Legend

Symbol/Color	Description
Blue	Water
Green	Submerged
Yellow	Shoals
Orange	Obstructions
Pink	Engineering Structures
Black	Navigation Aids
Red	Obstructions
Blue	Navigation Aids
Green	Navigation Aids
Yellow	Navigation Aids
Orange	Navigation Aids
Pink	Navigation Aids
Black	Navigation Aids
Blue	Navigation Aids
Green	Navigation Aids
Yellow	Navigation Aids
Orange	Navigation Aids
Pink	Navigation Aids
Black	Navigation Aids

Designed by:	Hydro Software v3.02	Creation Date:	12 May 2015 12:50:00
Reviewed by:	1:50,000	Project Reference Number:	10000000
Reference scale:	1 inch = 250 feet	Survey Type:	Single-beam Conduction Survey
Projection:	NAD 83 StatePlane South Carolina FIPS 3200 Feet		

Charleston Lower Harbor Channel
The information depicted on this map represents the results of surveys made on the dates indicated and is not intended to be used for navigation. The user is encouraged to use all prudent safety measures.
Concluded on: 24 April 2015
Charleston, South Carolina



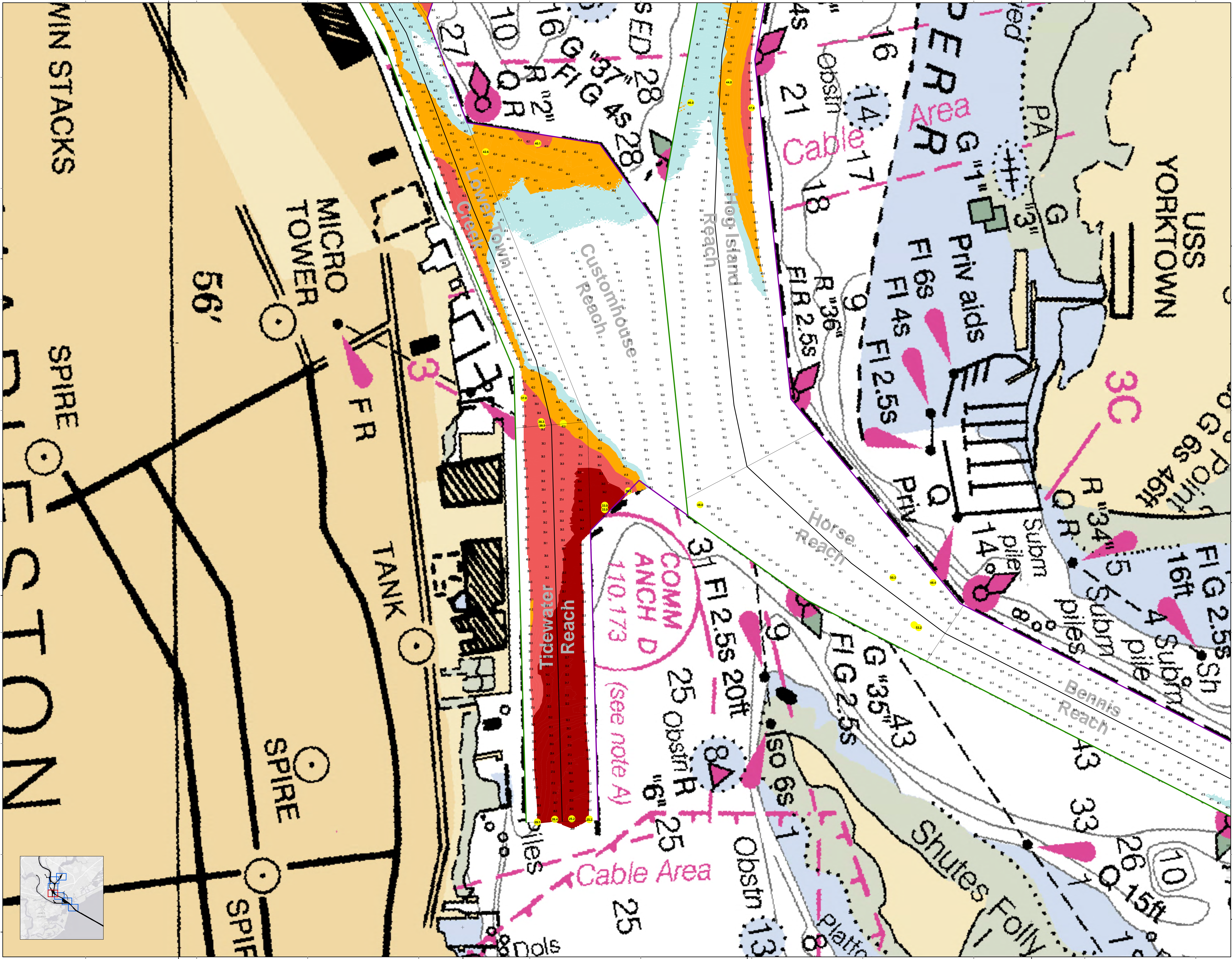
U.S. Army Corps of Engineers
Charleston District

Created by: [illegible]
 Project Reference Number: [illegible]
 Survey Type: Single-beam Bathymetry Survey
 Date: 12 May 2015
 Scale: 1 inch = 250 feet
 Projection: NAD 1983 StatePlane South Carolina FIPS 3200 Feet

U.S. Army Corps of Engineers
 District Office
 1000 North Main Street
 Charleston, SC 29403
 803.734.1000
 www.usace.army.mil

Charleston Harbor Channel
 The information depicted on this map represents the results of surveys made on the dates indicated and shall not be used for navigation or other purposes without the approval of the District Engineer.
 Concluded on: 24 April 2015
 Charleston, South Carolina

SHEET REFERENCE NUMBER
C002
SHEET 3 OF 7



U.S. Army Corps of Engineers
Charleston District

Charleston Lower Harbor Channel
The information depicted on this map represents the results of surveys made on the dates indicated and is not intended to be used for navigation. It is not to be used for navigation purposes. It is not to be used for navigation purposes. It is not to be used for navigation purposes.

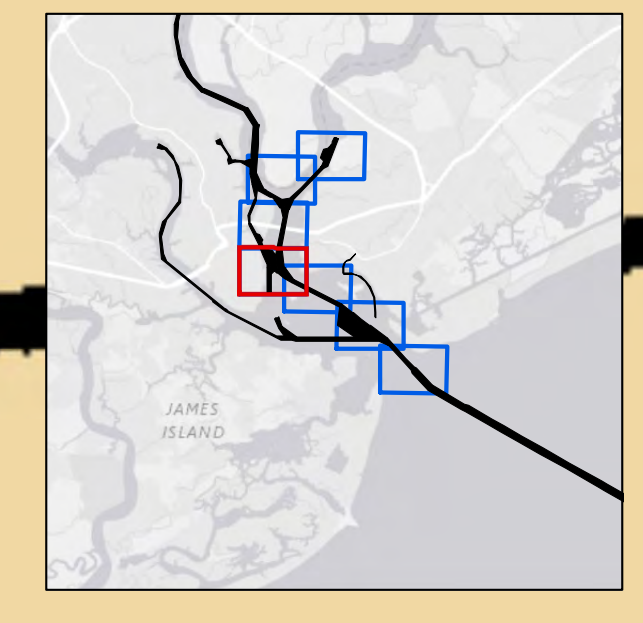
Created on: 24 April 2015
Charleston, South Carolina

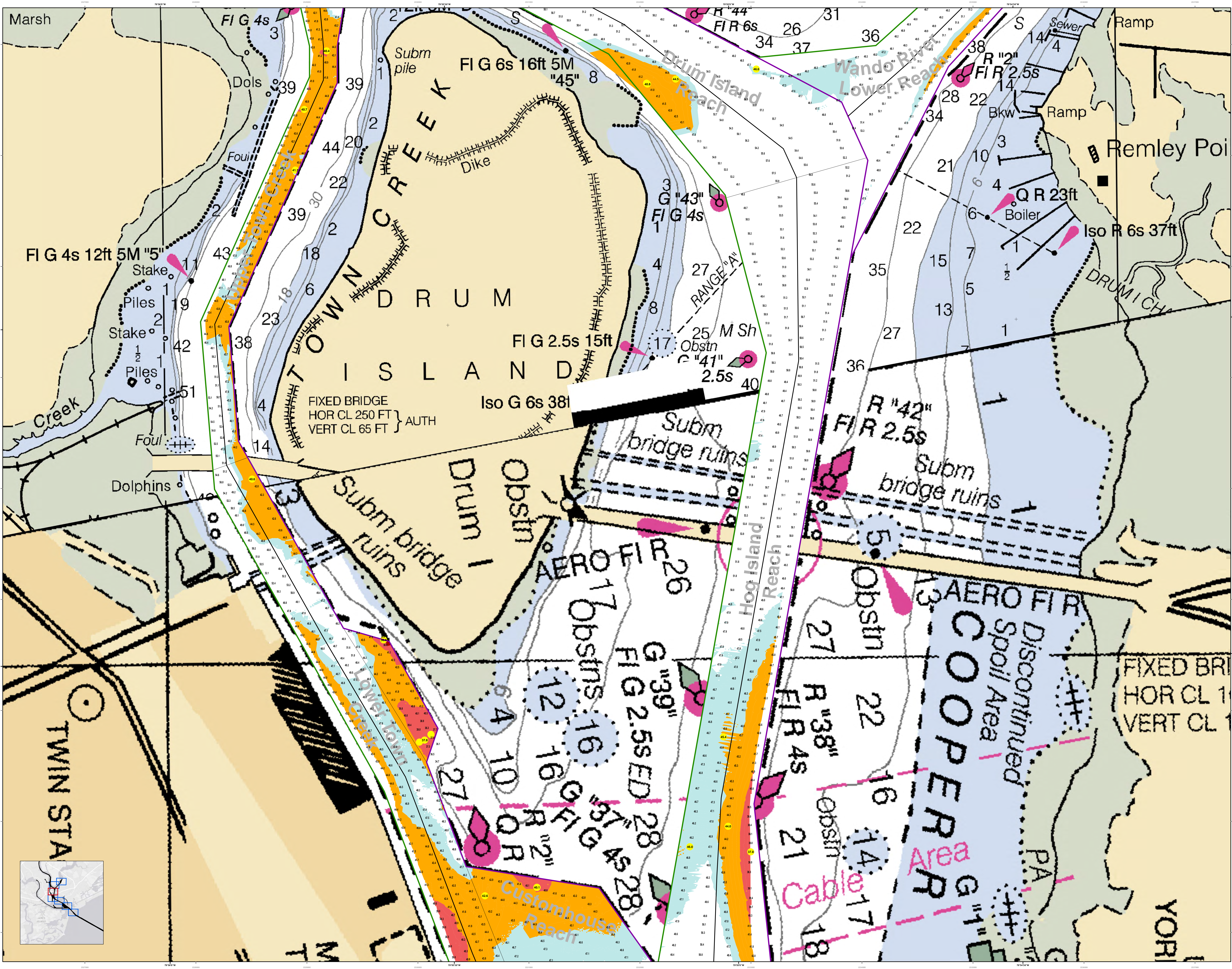
Legend

Soundings
1.0 to 1.9
2.0 to 2.9
3.0 to 3.9
4.0 to 4.9
5.0 to 5.9
6.0 to 6.9
7.0 to 7.9
8.0 to 8.9
9.0 to 9.9
10.0 to 10.9
11.0 to 11.9
12.0 to 12.9
13.0 to 13.9
14.0 to 14.9
15.0 to 15.9
16.0 to 16.9
17.0 to 17.9
18.0 to 18.9
19.0 to 19.9
20.0 to 20.9
21.0 to 21.9
22.0 to 22.9
23.0 to 23.9
24.0 to 24.9
25.0 to 25.9
26.0 to 26.9
27.0 to 27.9
28.0 to 28.9
29.0 to 29.9
30.0 to 30.9
31.0 to 31.9
32.0 to 32.9
33.0 to 33.9
34.0 to 34.9
35.0 to 35.9
36.0 to 36.9
37.0 to 37.9
38.0 to 38.9
39.0 to 39.9
40.0 to 40.9
41.0 to 41.9
42.0 to 42.9
43.0 to 43.9
44.0 to 44.9
45.0 to 45.9
46.0 to 46.9
47.0 to 47.9
48.0 to 48.9
49.0 to 49.9
50.0 to 50.9
51.0 to 51.9
52.0 to 52.9
53.0 to 53.9
54.0 to 54.9
55.0 to 55.9
56.0 to 56.9
57.0 to 57.9
58.0 to 58.9
59.0 to 59.9
60.0 to 60.9
61.0 to 61.9
62.0 to 62.9
63.0 to 63.9
64.0 to 64.9
65.0 to 65.9
66.0 to 66.9
67.0 to 67.9
68.0 to 68.9
69.0 to 69.9
70.0 to 70.9
71.0 to 71.9
72.0 to 72.9
73.0 to 73.9
74.0 to 74.9
75.0 to 75.9
76.0 to 76.9
77.0 to 77.9
78.0 to 78.9
79.0 to 79.9
80.0 to 80.9
81.0 to 81.9
82.0 to 82.9
83.0 to 83.9
84.0 to 84.9
85.0 to 85.9
86.0 to 86.9
87.0 to 87.9
88.0 to 88.9
89.0 to 89.9
90.0 to 90.9
91.0 to 91.9
92.0 to 92.9
93.0 to 93.9
94.0 to 94.9
95.0 to 95.9
96.0 to 96.9
97.0 to 97.9
98.0 to 98.9
99.0 to 99.9
100.0 to 100.9

Obstructions
1. Obstruction
2. Obstruction
3. Obstruction
4. Obstruction
5. Obstruction
6. Obstruction
7. Obstruction
8. Obstruction
9. Obstruction
10. Obstruction
11. Obstruction
12. Obstruction
13. Obstruction
14. Obstruction
15. Obstruction
16. Obstruction
17. Obstruction
18. Obstruction
19. Obstruction
20. Obstruction
21. Obstruction
22. Obstruction
23. Obstruction
24. Obstruction
25. Obstruction
26. Obstruction
27. Obstruction
28. Obstruction
29. Obstruction
30. Obstruction
31. Obstruction
32. Obstruction
33. Obstruction
34. Obstruction
35. Obstruction
36. Obstruction
37. Obstruction
38. Obstruction
39. Obstruction
40. Obstruction
41. Obstruction
42. Obstruction
43. Obstruction
44. Obstruction
45. Obstruction
46. Obstruction
47. Obstruction
48. Obstruction
49. Obstruction
50. Obstruction
51. Obstruction
52. Obstruction
53. Obstruction
54. Obstruction
55. Obstruction
56. Obstruction
57. Obstruction
58. Obstruction
59. Obstruction
60. Obstruction
61. Obstruction
62. Obstruction
63. Obstruction
64. Obstruction
65. Obstruction
66. Obstruction
67. Obstruction
68. Obstruction
69. Obstruction
70. Obstruction
71. Obstruction
72. Obstruction
73. Obstruction
74. Obstruction
75. Obstruction
76. Obstruction
77. Obstruction
78. Obstruction
79. Obstruction
80. Obstruction
81. Obstruction
82. Obstruction
83. Obstruction
84. Obstruction
85. Obstruction
86. Obstruction
87. Obstruction
88. Obstruction
89. Obstruction
90. Obstruction
91. Obstruction
92. Obstruction
93. Obstruction
94. Obstruction
95. Obstruction
96. Obstruction
97. Obstruction
98. Obstruction
99. Obstruction
100. Obstruction

Other Symbols
1. Light
2. Light
3. Light
4. Light
5. Light
6. Light
7. Light
8. Light
9. Light
10. Light
11. Light
12. Light
13. Light
14. Light
15. Light
16. Light
17. Light
18. Light
19. Light
20. Light
21. Light
22. Light
23. Light
24. Light
25. Light
26. Light
27. Light
28. Light
29. Light
30. Light
31. Light
32. Light
33. Light
34. Light
35. Light
36. Light
37. Light
38. Light
39. Light
40. Light
41. Light
42. Light
43. Light
44. Light
45. Light
46. Light
47. Light
48. Light
49. Light
50. Light
51. Light
52. Light
53. Light
54. Light
55. Light
56. Light
57. Light
58. Light
59. Light
60. Light
61. Light
62. Light
63. Light
64. Light
65. Light
66. Light
67. Light
68. Light
69. Light
70. Light
71. Light
72. Light
73. Light
74. Light
75. Light
76. Light
77. Light
78. Light
79. Light
80. Light
81. Light
82. Light
83. Light
84. Light
85. Light
86. Light
87. Light
88. Light
89. Light
90. Light
91. Light
92. Light
93. Light
94. Light
95. Light
96. Light
97. Light
98. Light
99. Light
100. Light





U.S. Army Corps of Engineers
Charleston District

Charleston Lower Harbor Channel
The information depicted on this map represents the results of surveys made on the dates indicated and shall not be used for navigation purposes unless the general conditions existing at that time.
Concluded on: 24 April 2015
Charleston, South Carolina

U.S. Army Corps of Engineers
District Office, South Carolina
Charleston District
1000 Lakeshore Drive
Charleston, SC 29405
301-321-1000
www.usace.army.mil

Legend

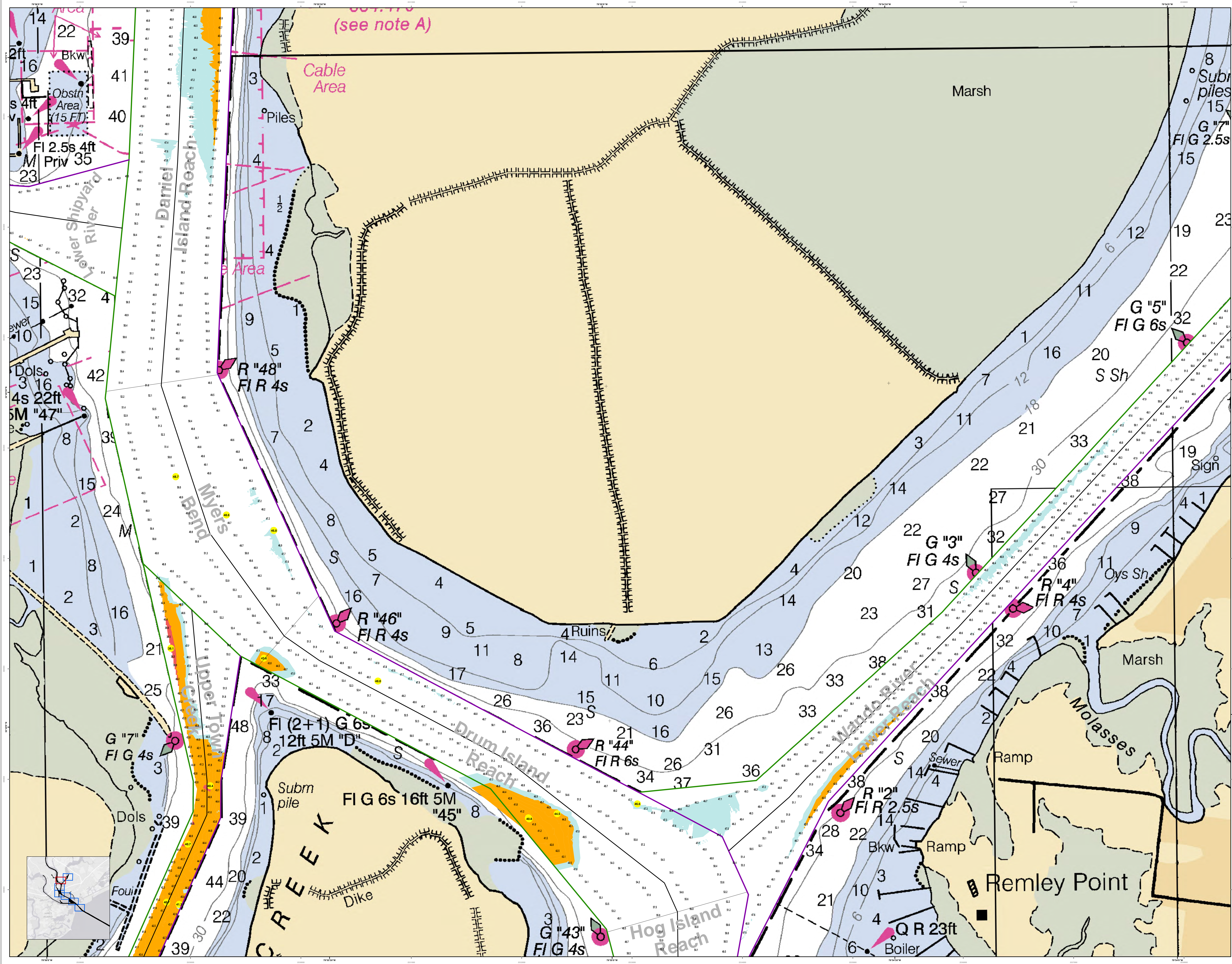
- Soundings: 1. 1:10,000 Scale; 2. 1:50,000 Scale; 3. 1:100,000 Scale
- Obstructions: 1. Obstruction; 2. Obstruction (Lighted); 3. Obstruction (Unlighted)
- Structure: 1. Structure; 2. Structure (Lighted); 3. Structure (Unlighted)
- Channel: 1. Channel; 2. Channel (Lighted); 3. Channel (Unlighted)
- Other: 1. Other; 2. Other (Lighted); 3. Other (Unlighted)

Scale
1 inch = 250 feet
0 100 200 300 400 500 600 700 800 900 1000 Feet

Metadata

Designed by:	U.S. Army Corps of Engineers District Office, Charleston, SC	Creation Date:	12 May 2015
Reviewed by:	U.S. Army Corps of Engineers District Office, Charleston, SC	Project Reference Number:	12 MAY 2015
Reference Scale:	1:50,000	Survey Type:	Hydrographic
Projection:	NAD 1983 StatePlane South Carolina FIPS 3200 Feet	Survey Year:	2010
		Survey Type:	Single-beam Conduction Survey

Sheet Reference
C002
SHEET 5 OF 7



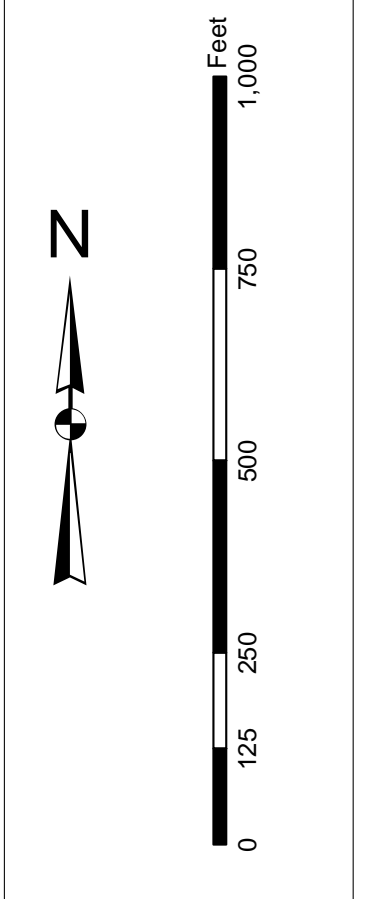
Legend

Soundings:
 1. Depth in feet
 2. Depth in fathoms
 3. Depth in meters
 4. Depth in feet (under 100 feet)
 5. Depth in fathoms (over 100 feet)

Obstructions:
 1. Obstruction
 2. Obstruction (under 100 feet)
 3. Obstruction (over 100 feet)

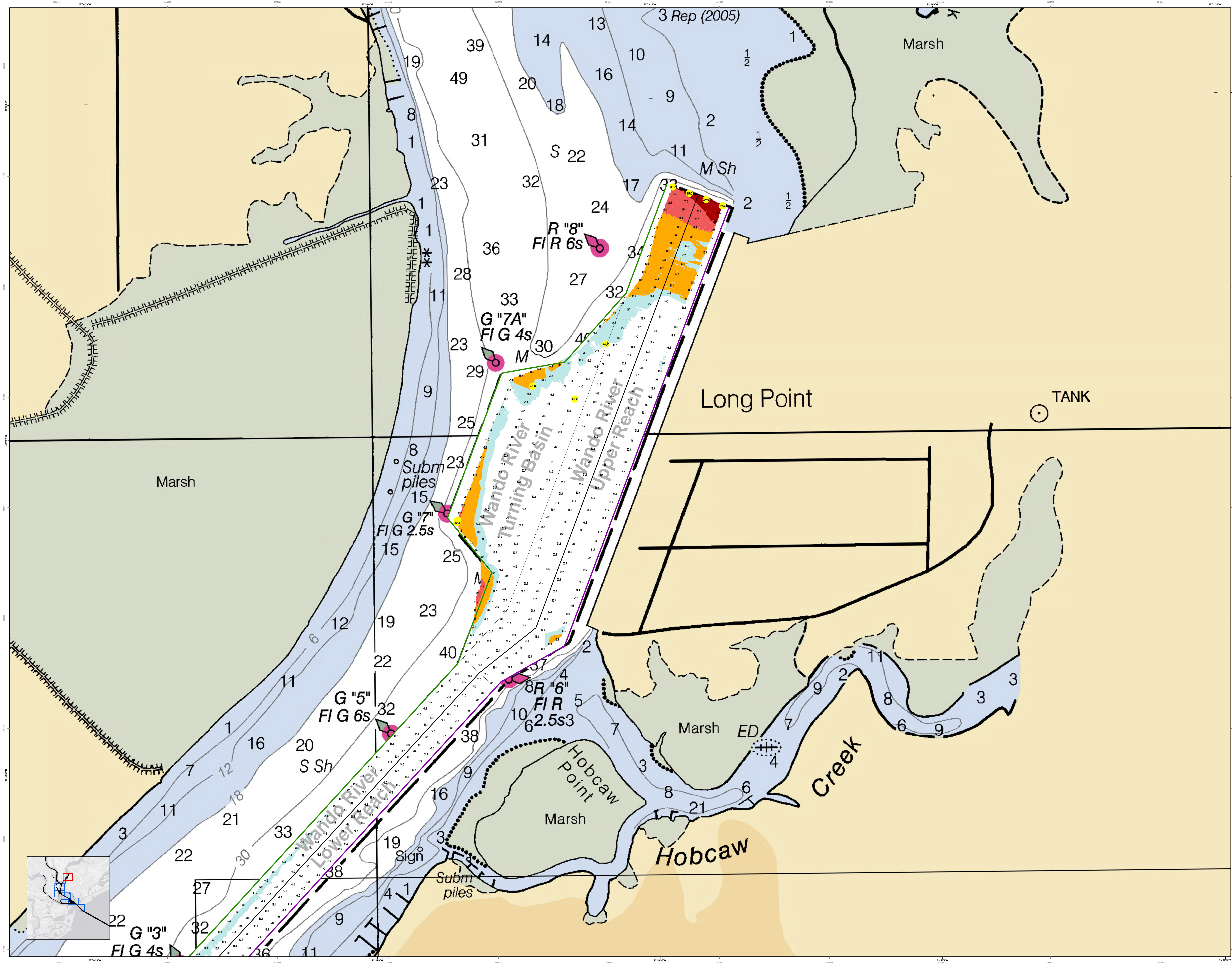
Navigation Aids:
 1. Light
 2. Light (under 100 feet)
 3. Light (over 100 feet)
 4. Light (under 100 feet) - 1000
 5. Light (over 100 feet) - 1000

Other Symbols:
 1. Buoy
 2. Buoy (under 100 feet)
 3. Buoy (over 100 feet)
 4. Buoy (under 100 feet) - 1000
 5. Buoy (over 100 feet) - 1000



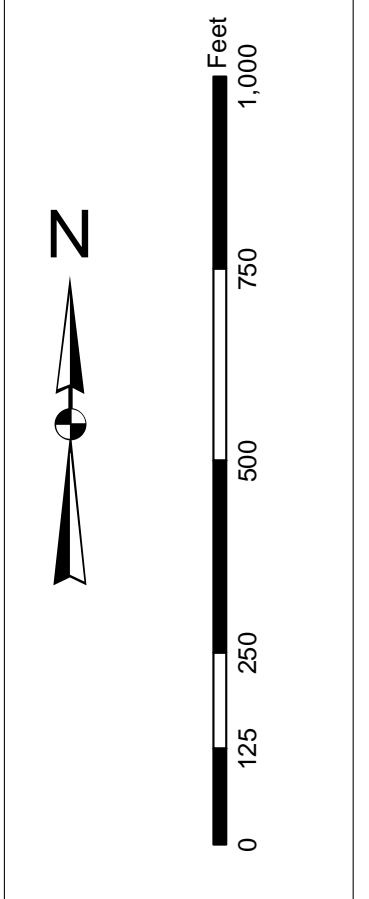
U.S. Army Corps of Engineers	Charleston District
Project Name	Charleston Harbor Channel
Project Number	12 MAY 2015
Scale	1 inch = 250 feet
Projection	NAD 1983 StatePlane South Carolina FIPS 3200 Feet

Charleston Harbor Channel
 The information depicted on this map represents the results of surveys made on the dates indicated and shall not be used for navigation purposes without the general conditions stated at that time.
 Concluded on: 24 April 2015
 Charleston, South Carolina



In accordance with the U.S. Army Corps of Engineers, Charleston District Office, Special District Office, Charleston, South Carolina, the information shown on this map represents the results of surveys made on the dates indicated and conditions existing at that time. Concluded on: 24 April 2015
Charleston, South Carolina

Projections:
1. North American Datum of 1983
2. State Plane South Carolina FIPS 3200 Feet
3. Datum: Mean Sea Level
4. Contour Interval: 1 Foot
5. Chart Datum: Mean Low Water
6. Chart Scale: 1:25,000
7. Chart No.: 11357



Legend

- Soundings:** 1-49 (Depth in feet)
- Contours:** 1, 2, 3, 4, 5, 6, 7, 8, 9, 10, 11, 12, 13, 14, 15, 16, 17, 18, 19, 20, 21, 22, 23, 24, 25, 26, 27, 28, 29, 30, 31, 32, 33, 34, 35, 36, 37, 38, 39, 40, 41, 42, 43, 44, 45, 46, 47, 48, 49
- Structures:** G "3" FIG 4s, G "5" FIG 6s, G "7" FIG 2.5s, G "7A" FIG 4s, R "8" FIR 6s, R "6" FIR 2.5s3, Subm piles, Sign
- Navigation Channels:** Wando River Lower Reach, Wando River Upper Reach, Hobcaw Creek
- Other Features:** Marsh, Long Point, TANK

Designed by: Hydro Software v3.02	Creation Date: 12 May 2015	Project Reference Number: 12 MAY 2015
Reviewed by: 1:50,000	Survey Type: Single-beam Condition Survey	Projection: NAD 1983 StatePlane South Carolina FIPS 3200 Feet
Scale: 1 inch = 250 feet	Chart Datum: Mean Low Water	

Charleston Lower Harbor Channel
The information depicted on this map represents the results of surveys made on the dates indicated and conditions existing at that time. Concluded on: 24 April 2015
Charleston, South Carolina