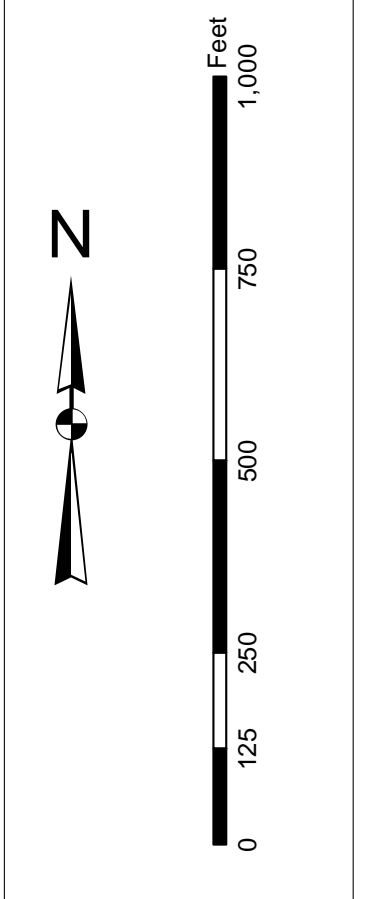


**Production Notes:**  
 1. This map was prepared by the U.S. Army Corps of Engineers, Charleston District Office, based on data provided by the Charleston District Office and other sources.  
 2. The information shown on this map represents the results of surveys made on the dates indicated and conditions existing at that time.  
 3. The information shown on this map is not intended to be used for navigation.  
 4. The information shown on this map is not intended to be used for any other purpose.  
 5. The information shown on this map is not intended to be used for any other purpose.

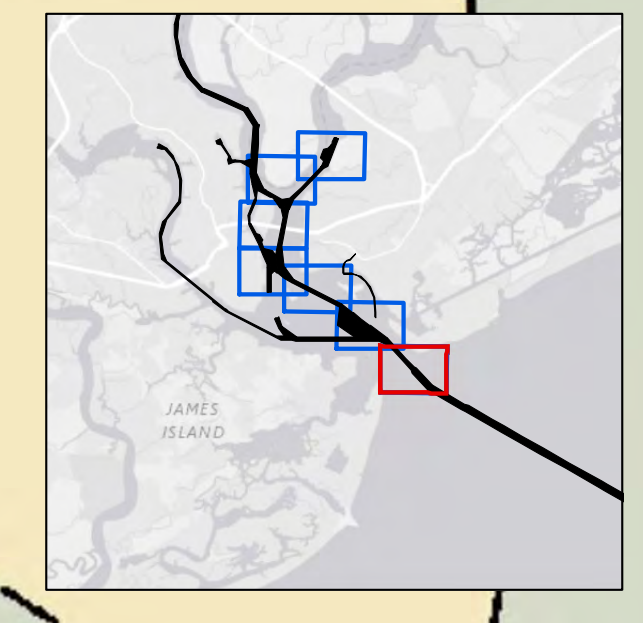
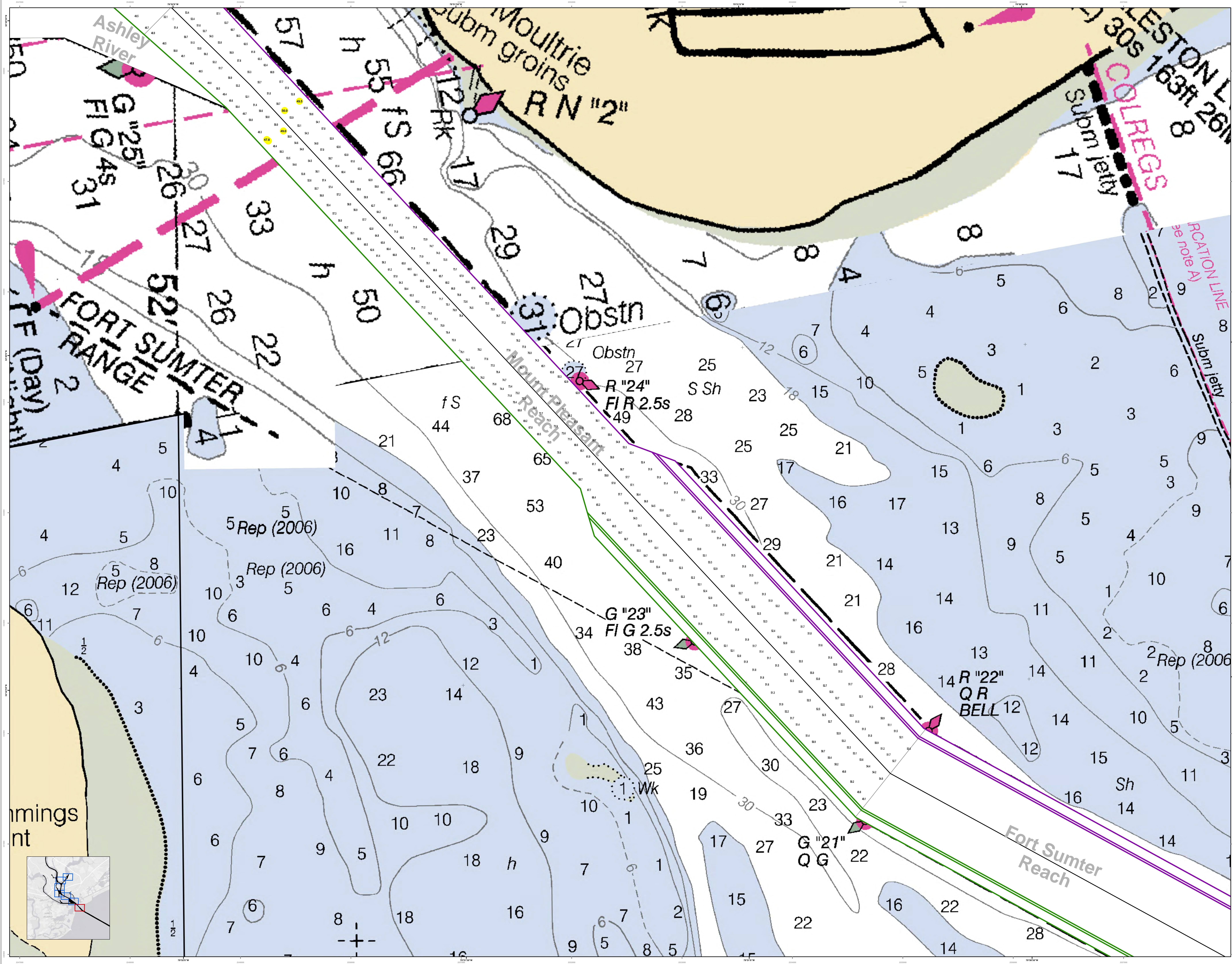


**Legend:**

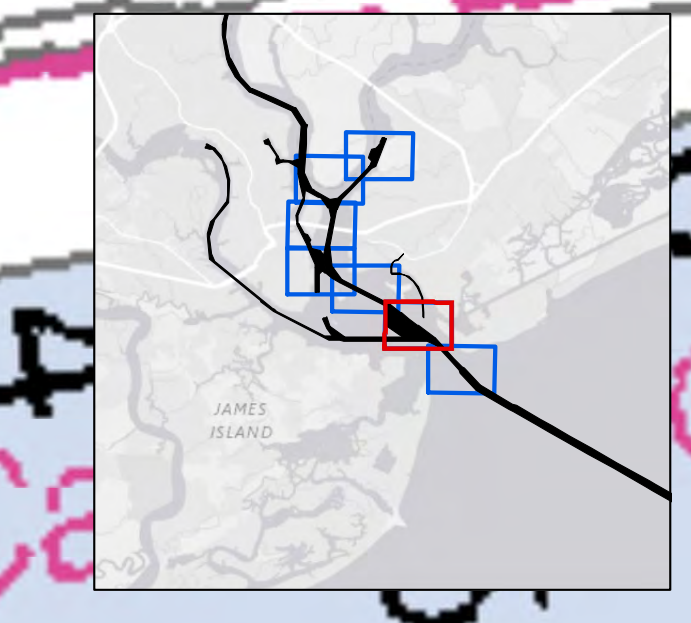
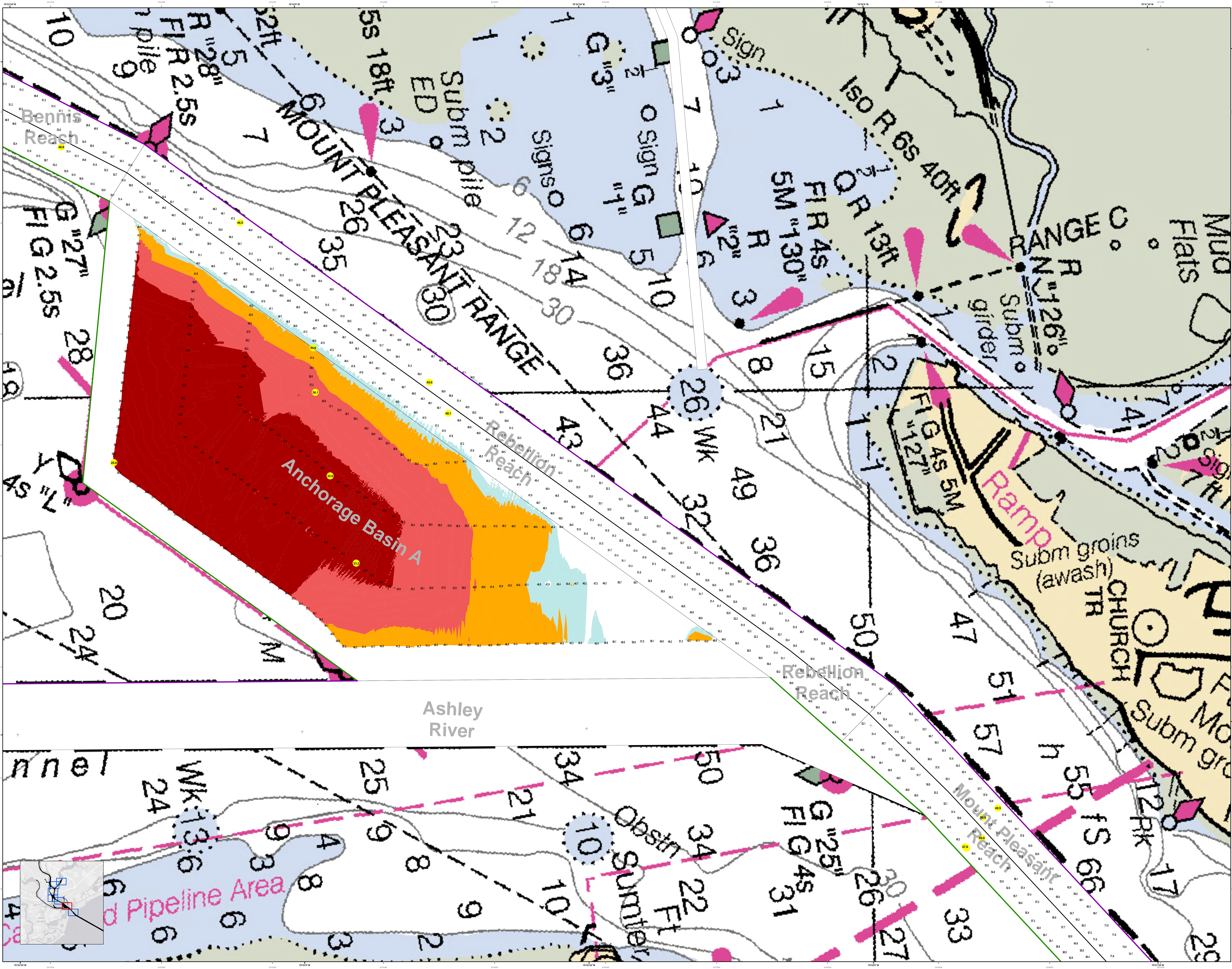
Symbol/Color	Description
Red	Obstruction
Blue	Water
Green	Vegetation
Black	Structure
Grey	Other
Yellow	Channel
White	Bar
Black	Light
Black	Dark
Black	Very Dark
Black	Very Light
Black	Very Dark
Black	Very Light

Designed by:	U.S. Army Corps of Engineers Charleston District Office Charleston, South Carolina
Reviewed by:	U.S. Army Corps of Engineers Charleston District Office Charleston, South Carolina
Scale:	1 inch = 250 feet
Projection:	NAD 1983 StatePlane South Carolina FIPS 3200 Feet
Design Date:	24 Jun 2015
Project Reference Number:	15C0010
Survey Type:	Single-beam Bathymetry

**Charleston Lower Harbor Channel**  
 The information depicted on this map represents the results of surveys made on the dates indicated and conditions existing at that time.  
 Concluded on: 21 May 2015  
 Charleston, South Carolina

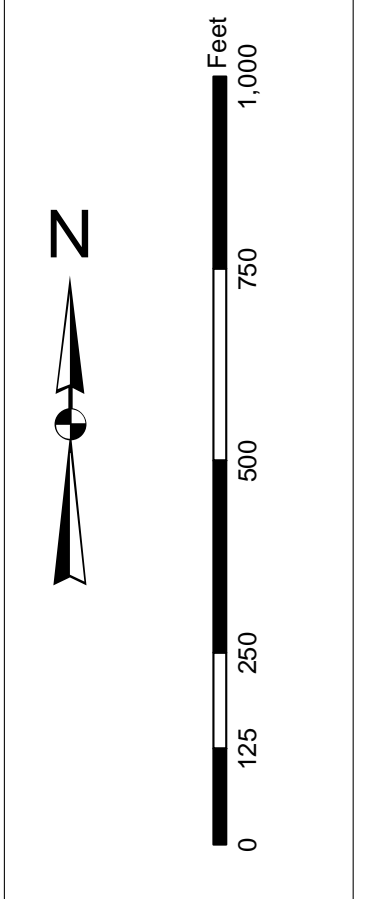






In the event that the U.S. Army Corps of Engineers, Charleston District Office, Special Operations Unit, is unable to provide a copy of this chart, the user is advised to contact the Hydrographic Office, U.S. Navy, for a copy of this chart. The user is also advised to contact the Hydrographic Office, U.S. Navy, for a copy of this chart. The user is also advised to contact the Hydrographic Office, U.S. Navy, for a copy of this chart.

Precedence:  
1. This chart  
2. U.S. Navy Hydrographic Office  
3. U.S. Army Corps of Engineers, Charleston District Office  
4. U.S. Army Corps of Engineers, Charleston District Office



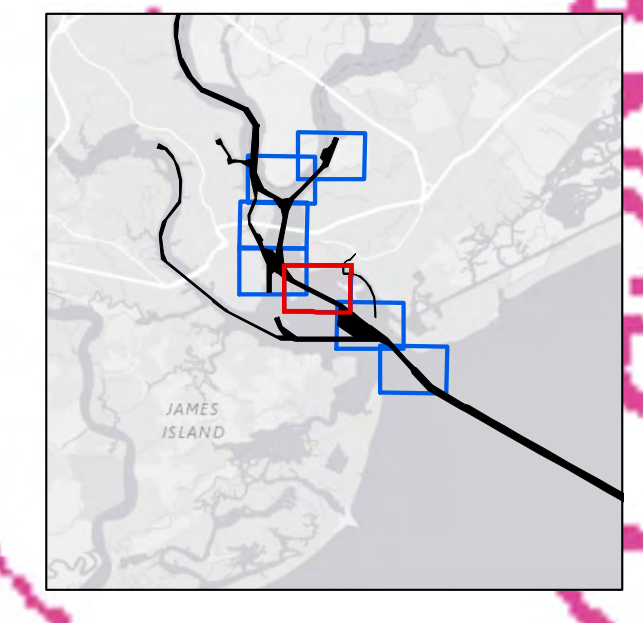
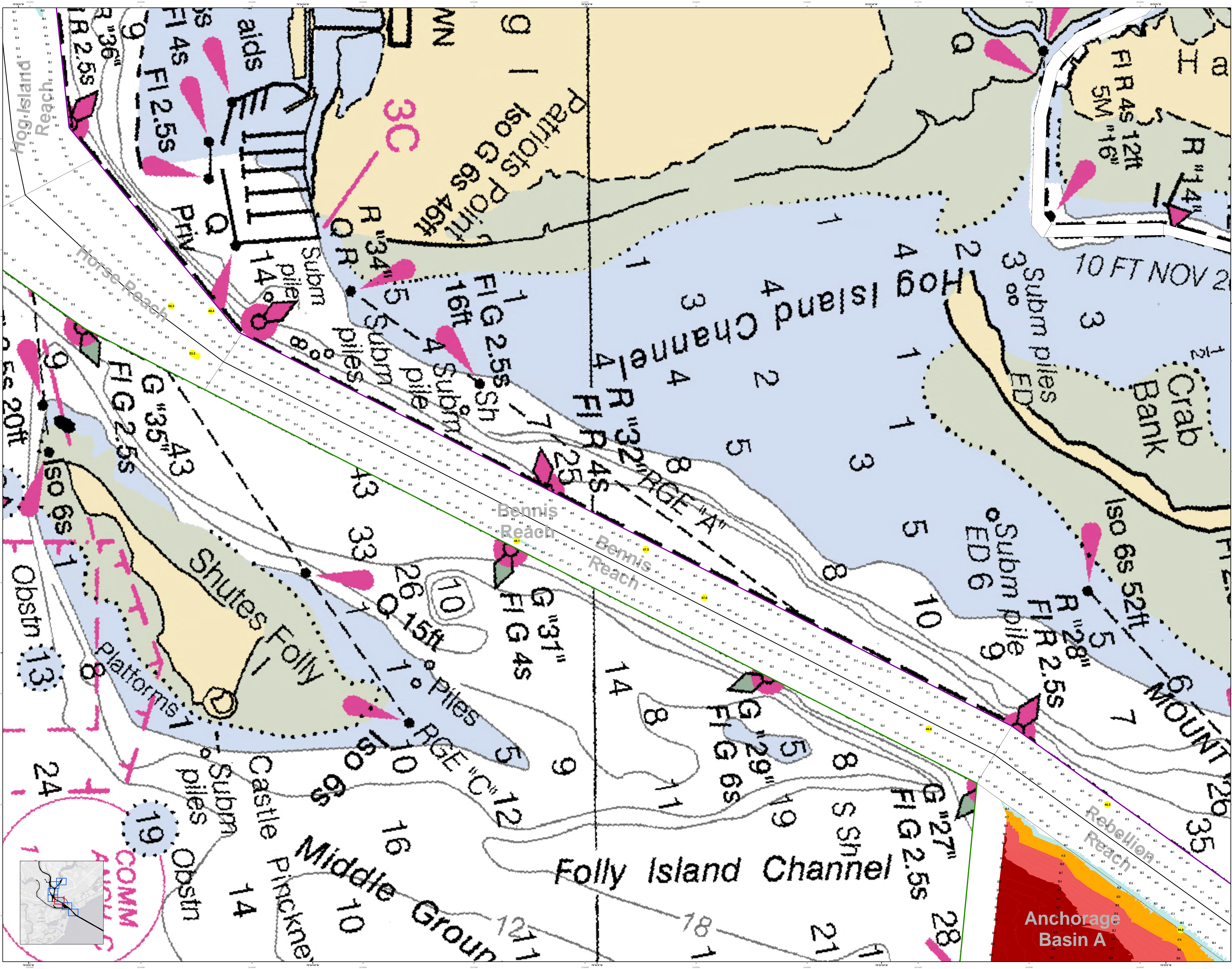
- Legend**
- Depth Soundings:**
    - 10 to 20 fms
    - 20 to 30 fms
    - 30 to 40 fms
    - 40 to 50 fms
    - 50 to 60 fms
    - 60 to 70 fms
    - 70 to 80 fms
    - 80 to 90 fms
    - 90 to 100 fms
    - 100 to 110 fms
    - 110 to 120 fms
    - 120 to 130 fms
    - 130 to 140 fms
    - 140 to 150 fms
    - 150 to 160 fms
    - 160 to 170 fms
    - 170 to 180 fms
    - 180 to 190 fms
    - 190 to 200 fms
    - 200 to 210 fms
    - 210 to 220 fms
    - 220 to 230 fms
    - 230 to 240 fms
    - 240 to 250 fms
    - 250 to 260 fms
    - 260 to 270 fms
    - 270 to 280 fms
    - 280 to 290 fms
    - 290 to 300 fms
    - 300 to 310 fms
    - 310 to 320 fms
    - 320 to 330 fms
    - 330 to 340 fms
    - 340 to 350 fms
    - 350 to 360 fms
    - 360 to 370 fms
    - 370 to 380 fms
    - 380 to 390 fms
    - 390 to 400 fms
    - 400 to 410 fms
    - 410 to 420 fms
    - 420 to 430 fms
    - 430 to 440 fms
    - 440 to 450 fms
    - 450 to 460 fms
    - 460 to 470 fms
    - 470 to 480 fms
    - 480 to 490 fms
    - 490 to 500 fms
    - 500 to 510 fms
    - 510 to 520 fms
    - 520 to 530 fms
    - 530 to 540 fms
    - 540 to 550 fms
    - 550 to 560 fms
    - 560 to 570 fms
    - 570 to 580 fms
    - 580 to 590 fms
    - 590 to 600 fms
    - 600 to 610 fms
    - 610 to 620 fms
    - 620 to 630 fms
    - 630 to 640 fms
    - 640 to 650 fms
    - 650 to 660 fms
    - 660 to 670 fms
    - 670 to 680 fms
    - 680 to 690 fms
    - 690 to 700 fms
    - 700 to 710 fms
    - 710 to 720 fms
    - 720 to 730 fms
    - 730 to 740 fms
    - 740 to 750 fms
    - 750 to 760 fms
    - 760 to 770 fms
    - 770 to 780 fms
    - 780 to 790 fms
    - 790 to 800 fms
    - 800 to 810 fms
    - 810 to 820 fms
    - 820 to 830 fms
    - 830 to 840 fms
    - 840 to 850 fms
    - 850 to 860 fms
    - 860 to 870 fms
    - 870 to 880 fms
    - 880 to 890 fms
    - 890 to 900 fms
    - 900 to 910 fms
    - 910 to 920 fms
    - 920 to 930 fms
    - 930 to 940 fms
    - 940 to 950 fms
    - 950 to 960 fms
    - 960 to 970 fms
    - 970 to 980 fms
    - 980 to 990 fms
    - 990 to 1000 fms
  - Navigation Aids:**
    - Light
    - Daymark
    - Obstruction
    - Submerged
    - Structure
    - Other
  - Other Symbols:**
    - Submerged
    - Structure
    - Other

Designed by:	Hydrographic Office	Creation Date:	24 JUN 2015
Reviewed by:	Hydrographic Office	Project Reference Number:	15000
Reference scale:	1 inch = 250 feet	Survey Type:	Single-beam Conical Survey
Projection:	NAD 1983 StatePlane South Carolina FIPS 3200 Feet		

The information depicted on this map represents the results of surveys made on the dates indicated and is not intended to be used for navigation. The user is advised to contact the Hydrographic Office, U.S. Navy, for a copy of this chart. The user is also advised to contact the Hydrographic Office, U.S. Navy, for a copy of this chart.

Charleston, South Carolina  
Concluded on: 21 May 2015





U.S. Army Corps of Engineers  
 Charleston District

The information depicted on this map represents the results of surveys made on the dates indicated and call on them as they were made at that time. Concluded on: 21 May 2015  
 Charleston, South Carolina

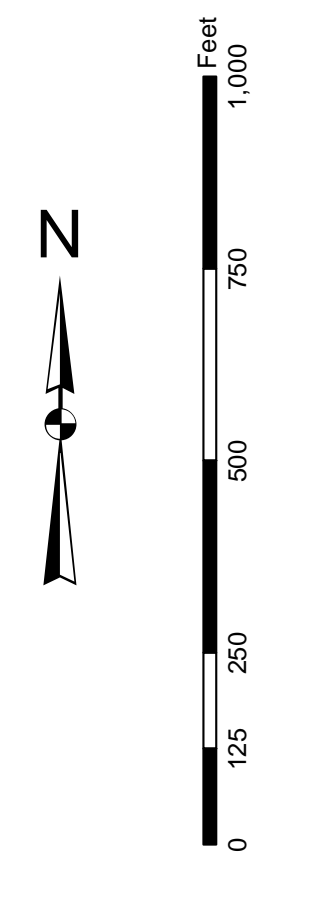
U.S. Army District Engineer CHARLESTON DISTRICT CHARLESTON, SOUTH CAROLINA	Project Reference Number: 15000	Creation Date: 24 Jun 2015
Survey Type: Single-beam Condition Survey	Scale: 1 inch = 250 feet	Design Date: 24 Jun 2015
Project: M&D 1983 State/Plane South Carolina FPS 3800 Feet	Projection: NAD 1983 State/Plane South Carolina FPS 3800 Feet	Software: HYPACK

SHEET REFERENCE NUMBER: C002  
 SHEET 3 OF 7



In accordance with the U.S. Army Corps of Engineers' Charleston District Office, Special Plans shall be made to project, construct, and maintain the proposed project in accordance with the general design and construction standards of the District Office. The project shall be constructed in accordance with the standards of the District Office and the standards of the U.S. Army Corps of Engineers. The project shall be constructed in accordance with the standards of the District Office and the standards of the U.S. Army Corps of Engineers.

**Project Dates:**  
1. Design & Construction: 2/1/2015 to 5/31/2015  
2. Construction: 6/1/2015 to 8/31/2015  
3. Standstill: 9/1/2015 to 11/30/2015  
4. Closeout: 12/1/2015 to 12/31/2015

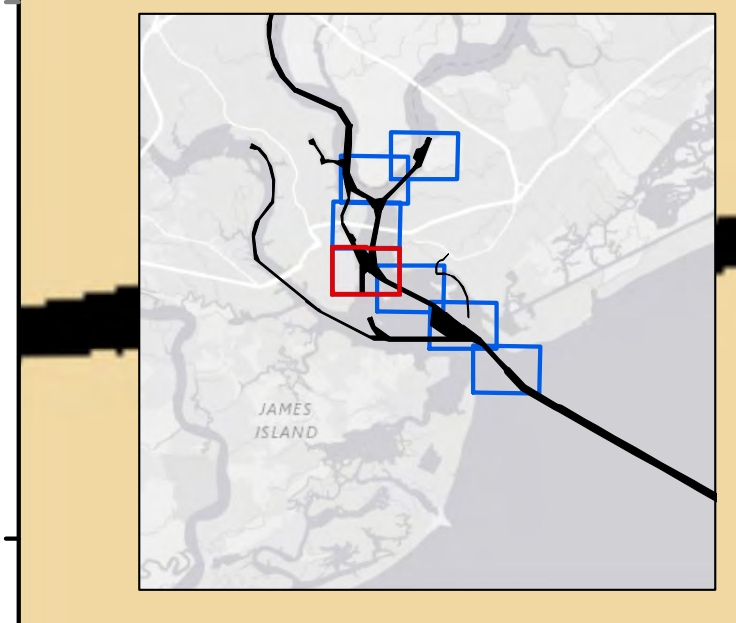
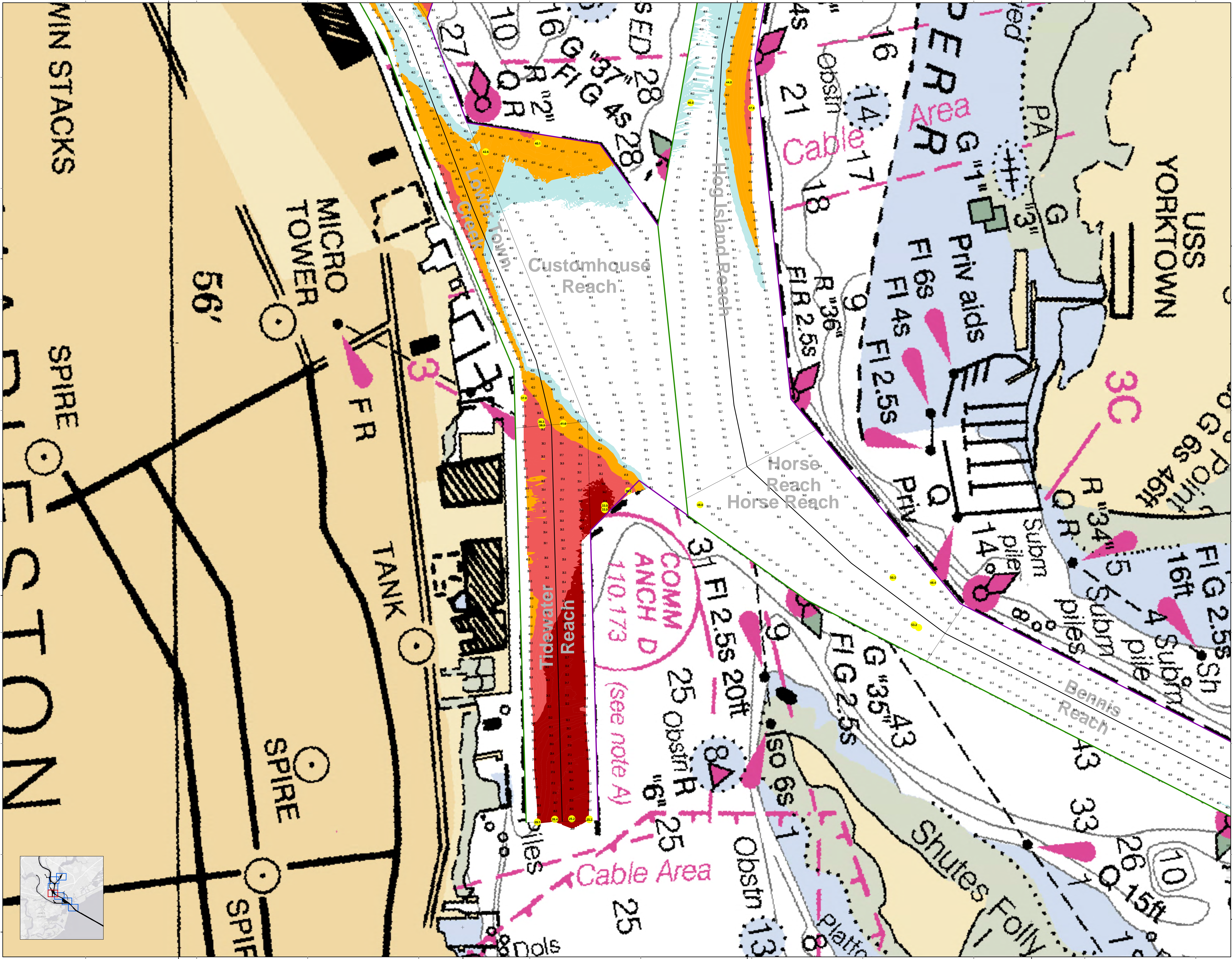


**Legend**

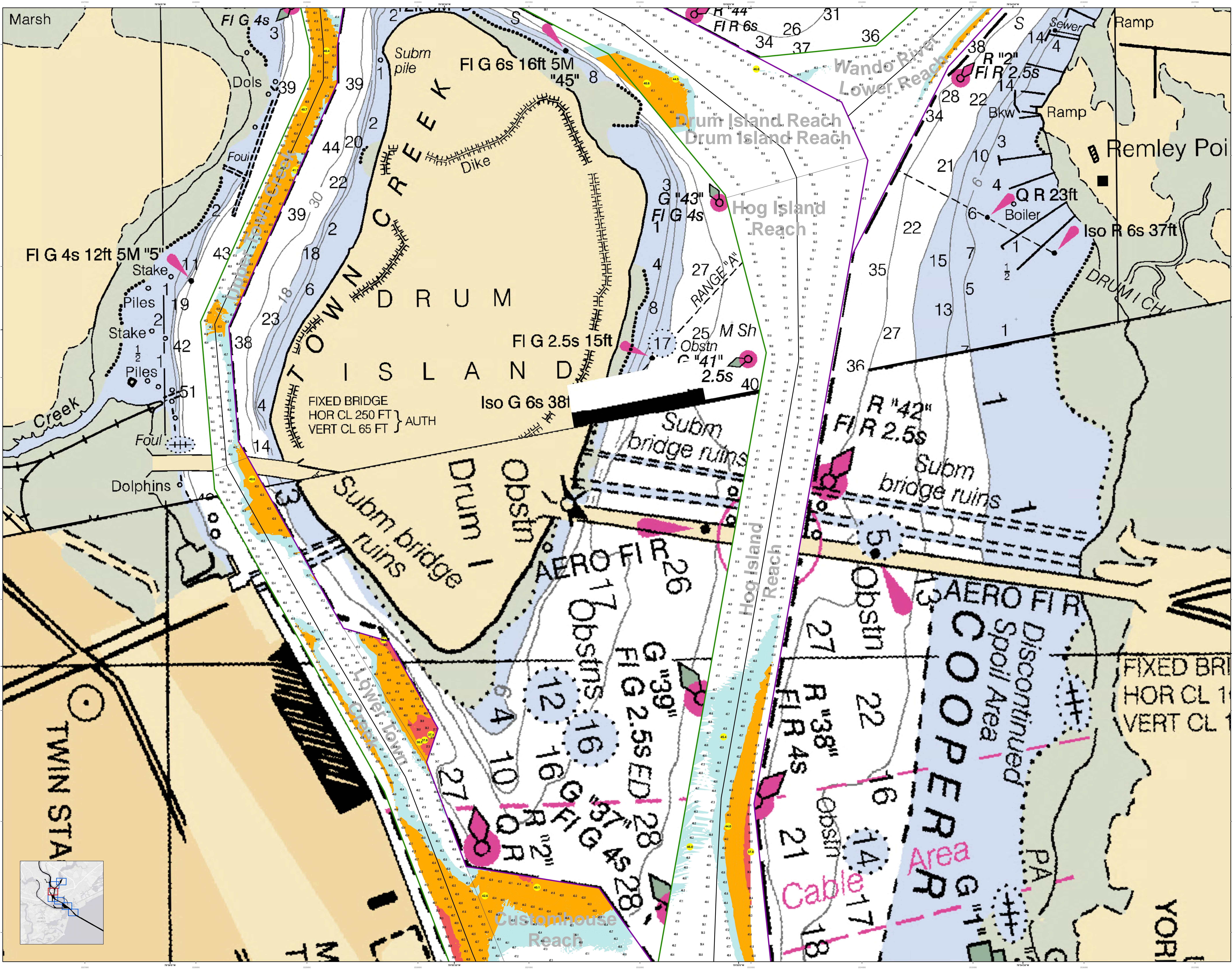
- Waterway**
  - Proposed Main Channel
  - Proposed Branch Channel
  - Proposed Pile Field
  - Proposed Pile Row
  - Proposed Pile Line
  - Proposed Pile Area
  - Proposed Pile Point
  - Proposed Pile End
  - Proposed Pile Start
  - Proposed Pile Stop
  - Proposed Pile Turn
  - Proposed Pile Curve
  - Proposed Pile Bend
  - Proposed Pile Kink
  - Proposed Pile Zigzag
  - Proposed Pile S-curve
  - Proposed Pile J-curve
  - Proposed Pile U-curve
  - Proposed Pile H-curve
  - Proposed Pile Z-curve
  - Proposed Pile S-shape
  - Proposed Pile Z-shape
  - Proposed Pile H-shape
  - Proposed Pile Z-shape
- Structure**
  - Proposed Structure
  - Proposed Structure
  - Proposed Structure
  - Proposed Structure
  - Proposed Structure
- Other**
  - Proposed Other
  - Proposed Other
  - Proposed Other
  - Proposed Other
  - Proposed Other

Designed by:	Jeffery R. White v3.02
Reviewed by:	1/15/2015
Reference scale:	1 inch = 250 feet
Project:	MAD 1983 State/Plane South Carolina FPS 3300 Feet
U.S. Army District:	CHARLESTON DISTRICT
U.S. Army Corps of Engineers:	CHARLESTON DISTRICT
Branch:	SAVANNAH DISTRICT
Location:	CHARLESTON, SOUTH CAROLINA
Project Name:	SHUTES FOLLY
Project Number:	SHUTES FOLLY
Project Type:	Single-beam Condition Survey
Design Date:	24 JUN 2015
Project Reference Number:	CHARLESTON 010

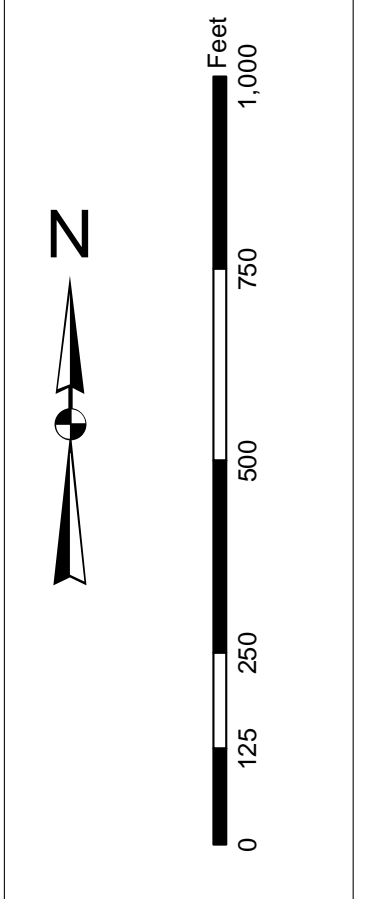
The information depicted on this map represents the results of surveys made on the dates indicated and should not be used for any purpose other than the general conditions existing at that time.  
Charleston, South Carolina  
Concluded on: 21 May 2015







**Disclaimer:**  
This map was prepared by the U.S. Army Corps of Engineers, Charleston District Office. Special thanks go to the project manager, Mr. [Name], and the project engineer, Mr. [Name], for their assistance in the field and in the office. The information on this map is based on the data indicated and is not intended to be used for navigation. The Corps of Engineers is not responsible for any errors or omissions on this map. The user is encouraged to use all prudent safety practices.



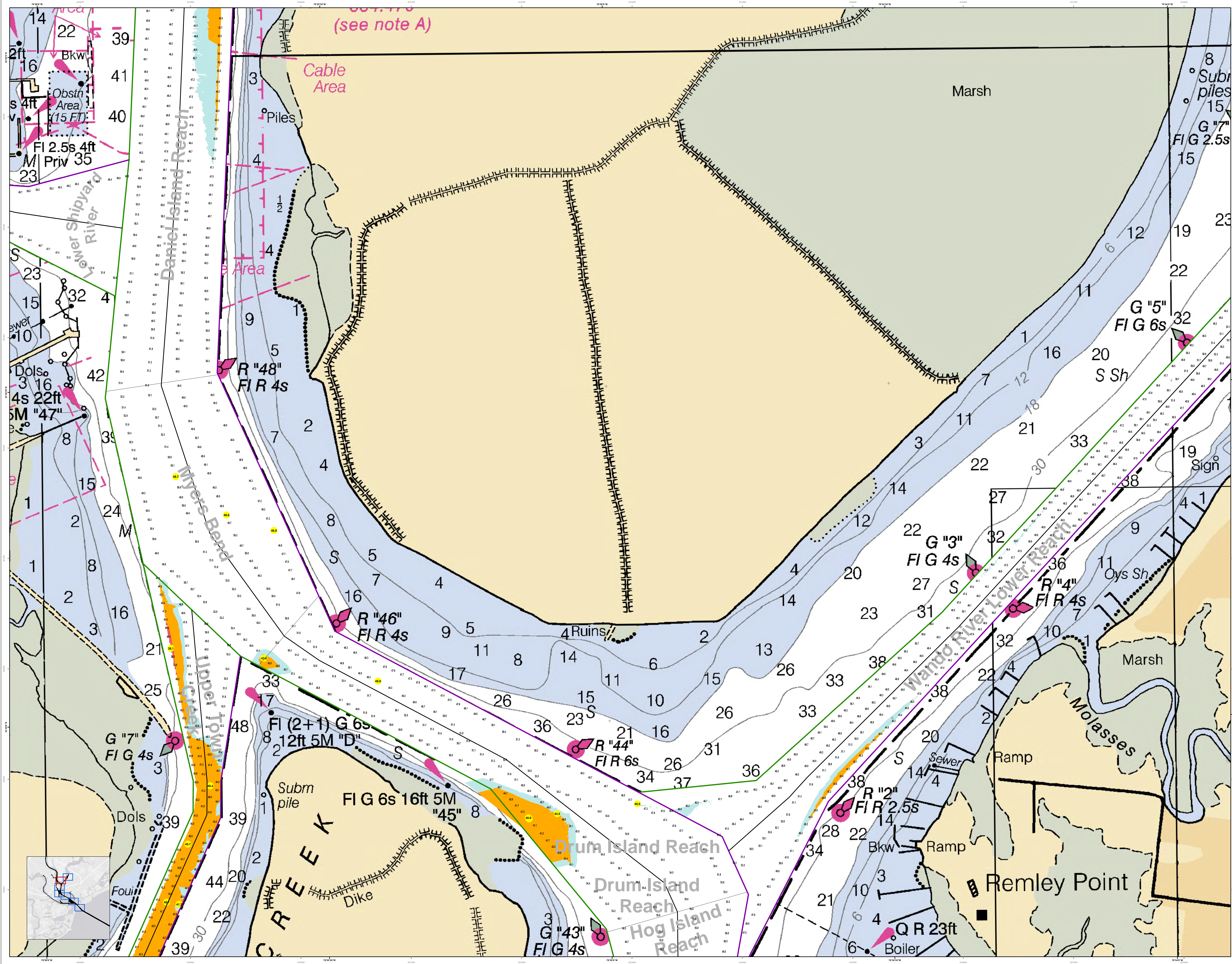
**Legend**

	Depth Soundings
	Navigational Aids
	Structures
	Obstructions
	Dikes
	Spoil Areas
	Discontinued Areas
	Cable
	Subm bridge ruins
	Fixed Bridge
	Ditches
	Marsh
	Creek
	Dols
	Foul
	Dolphins
	Stake
	Piles
	Subm pile
	Dike
	Ramp
	Boiler
	Bkw
	Sewer
	Range
	Obstn
	Marker
	Buoy
	Light
	Daymark
	Nightmark
	Daymark with Light
	Nightmark with Light
	Daymark with Light and Sound
	Nightmark with Light and Sound
	Daymark with Light and Sound and Fog Signal
	Nightmark with Light and Sound and Fog Signal

Designed by:	U.S. Army Corps of Engineers, Charleston District Office
Design date:	24 Jun 2015
Project reference number:	13C000
Survey type:	Single-beam Condition Survey
Scale:	1 inch = 250 feet
Projection:	NAD 1983 StatePlane South Carolina FIPS 3200 Feet

**Charleston Lower Harbor Channel**  
The information depicted on this map represents the results of surveys made on the dates indicated and is not intended to be used for navigation. The Corps of Engineers is not responsible for any errors or omissions on this map. The user is encouraged to use all prudent safety practices.  
Concluded on: 21 May 2015  
Charleston, South Carolina

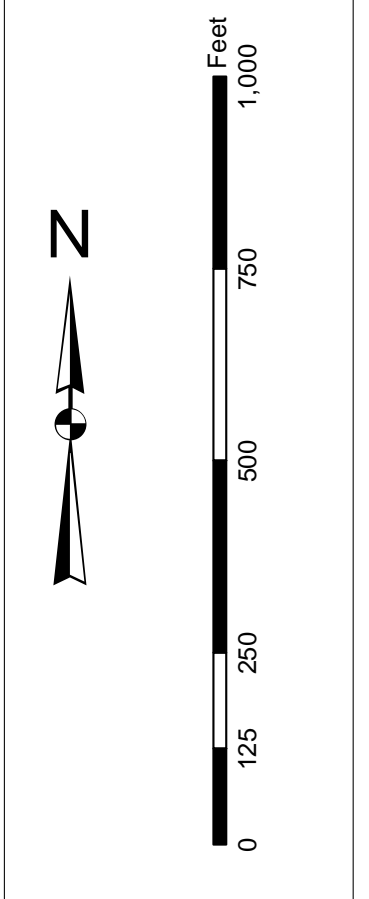




(see note A)

**Legend:**

- Depth Soundings: 1, 2, 3, 4, 5, 6, 7, 8, 9, 10, 11, 12, 13, 14, 15, 16, 17, 18, 19, 20, 21, 22, 23, 24, 25, 26, 27, 28, 29, 30, 31, 32, 33, 34, 35, 36, 37, 38, 39, 40, 41, 42, 43, 44, 45, 46, 47, 48
- Obstruction: 1, 2, 3, 4, 5, 6, 7, 8, 9, 10, 11, 12, 13, 14, 15, 16, 17, 18, 19, 20, 21, 22, 23, 24, 25, 26, 27, 28, 29, 30, 31, 32, 33, 34, 35, 36, 37, 38, 39, 40, 41, 42, 43, 44, 45, 46, 47, 48
- Structure: 1, 2, 3, 4, 5, 6, 7, 8, 9, 10, 11, 12, 13, 14, 15, 16, 17, 18, 19, 20, 21, 22, 23, 24, 25, 26, 27, 28, 29, 30, 31, 32, 33, 34, 35, 36, 37, 38, 39, 40, 41, 42, 43, 44, 45, 46, 47, 48
- Other: 1, 2, 3, 4, 5, 6, 7, 8, 9, 10, 11, 12, 13, 14, 15, 16, 17, 18, 19, 20, 21, 22, 23, 24, 25, 26, 27, 28, 29, 30, 31, 32, 33, 34, 35, 36, 37, 38, 39, 40, 41, 42, 43, 44, 45, 46, 47, 48

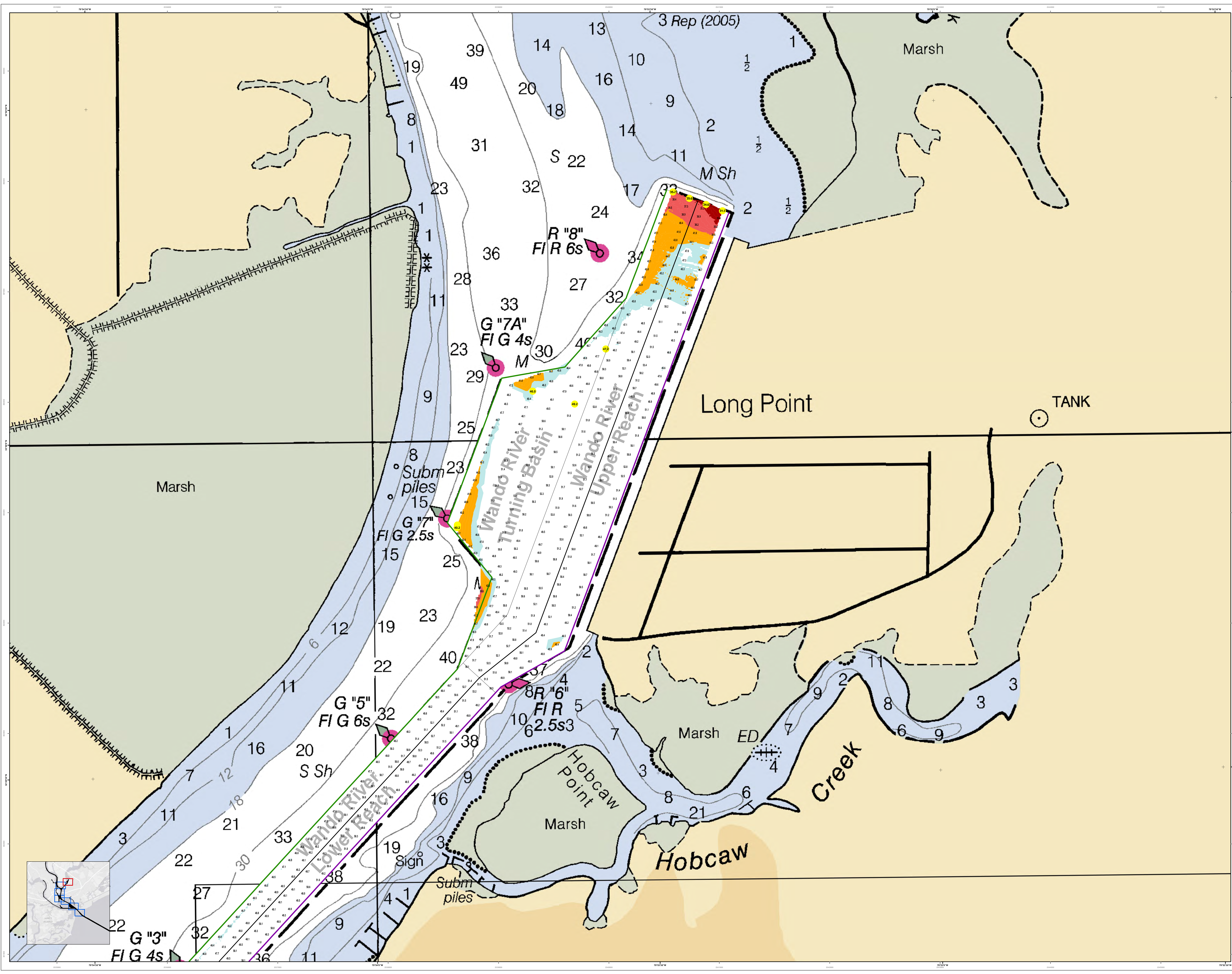


Symbol	Description
[Red circle]	Red Buoy
[Green circle]	Green Buoy
[Black circle]	Black Buoy
[White circle]	White Buoy
[Yellow circle]	Yellow Buoy
[Orange circle]	Orange Buoy
[Purple circle]	Purple Buoy
[Blue circle]	Blue Buoy
[Pink circle]	Pink Buoy
[Black line]	Obstruction
[Dashed line]	Structure
[Solid line]	Other

U.S. Army Corps of Engineers Charleston District Charleston, South Carolina	Design Date: 24 JUN 2015 Project Reference Number: 150300 Survey Type: Single-beam Condition Survey
Designed by: [Name] Reviewed by: [Name] Reference scale: 1 inch = 250 feet Projection: NAD 1983 StatePlane South Carolina FIPS 3200 Feet	Creation Date: 24 JUN 2015 Project Reference Number: 150300 Survey Type: Single-beam Condition Survey

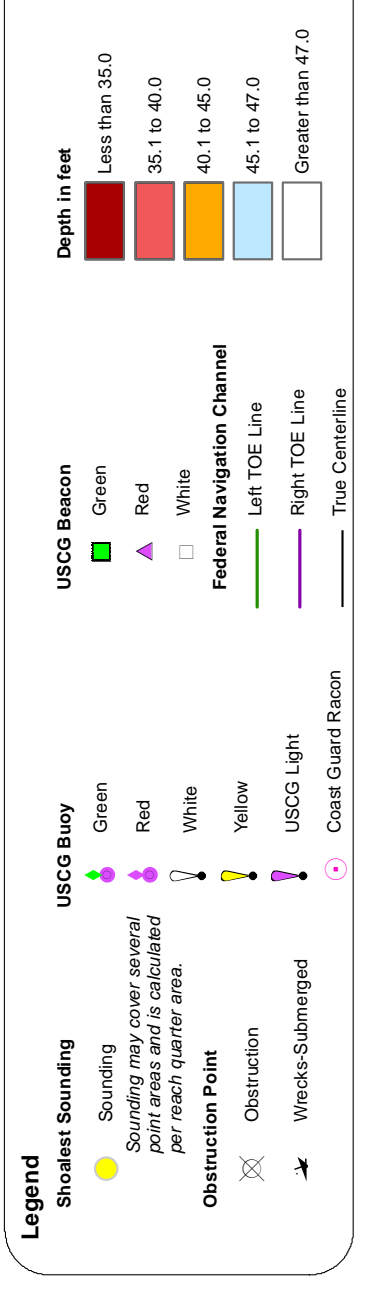
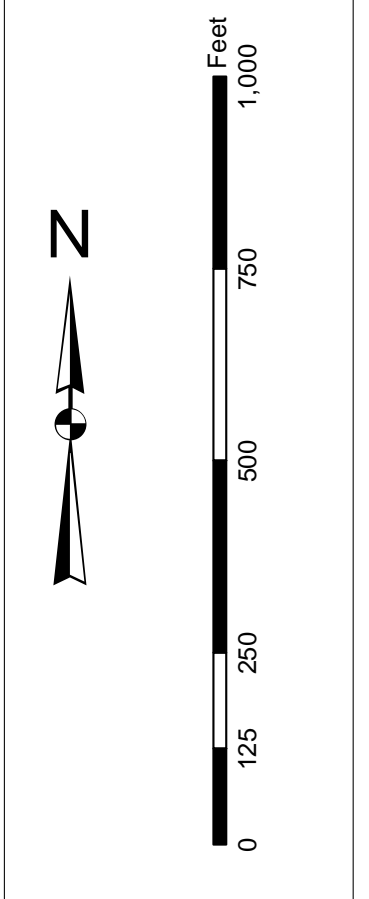
The information depicted on this map represents the results of surveys made on the dates indicated and is not intended to be used for any purpose other than the general conditions existing at that time.  
Concluded on: 21 May 2015  
Charleston, South Carolina





In accordance with the U.S. Army Corps of Engineers, Charleston District Office, Special Plans Section, the following information is provided for the user of this chart. This information is provided for informational purposes only and does not constitute a warranty of any kind. The user of this chart is advised that the information contained herein is subject to change without notice and that the user should verify the information contained herein against the most current information available. The user is encouraged to use all prudent safety measures.

**Production Notes:**  
 1. This chart is a reproduction of the original chart.  
 2. The original chart was produced by the Charleston District Office.  
 3. The original chart was produced on 05/21/2015.  
 4. The original chart was produced by the Charleston District Office.  
 5. The original chart was produced by the Charleston District Office.



Designed by: Jeffery S. Swartz	Design date: 24 Jun 2015	Creation date: 24 JUN 2015
Reviewed by: John D. Swartz	Project reference number: 13000	Project reference number: 13000
Reference scale: 1 inch = 250 feet	Survey type: Single-beam Condition Survey	Projection: NAD 1983 StatePlane South Carolina EPS:3300 Feet

**Charleston Lower Harbor Channel**  
 The information depicted on this map represents the results of surveys made on the dates indicated and is intended for general information only. Conditions existing at that time.  
 Concluded on: 21 May 2015  
 Charleston, South Carolina