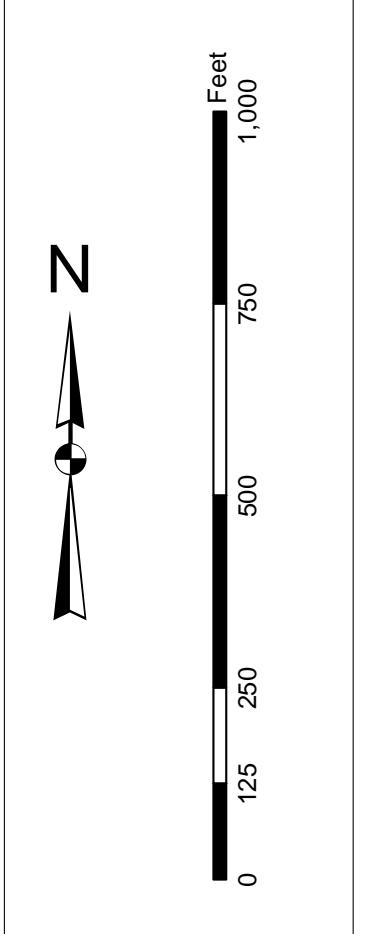


In accordance with the U.S. Army Corps of Engineers, Charleston District Office, Special Operations Manual for Project, Construction, and Maintenance of Navigational Aids, the information depicted on this chart represents the results of surveys made on the dates indicated and conditions existing at that time. This information is for general information only and is not intended to be used for navigation. Users are encouraged to use all prudent safety measures.

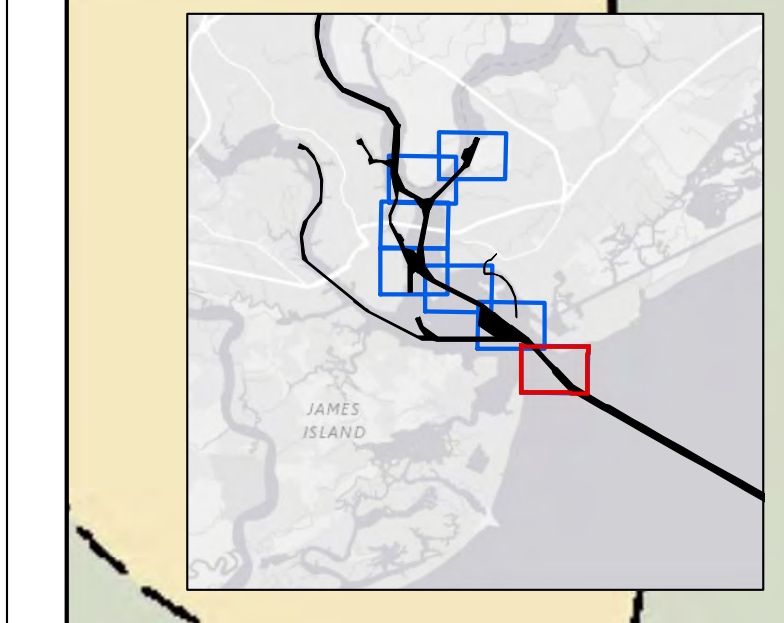


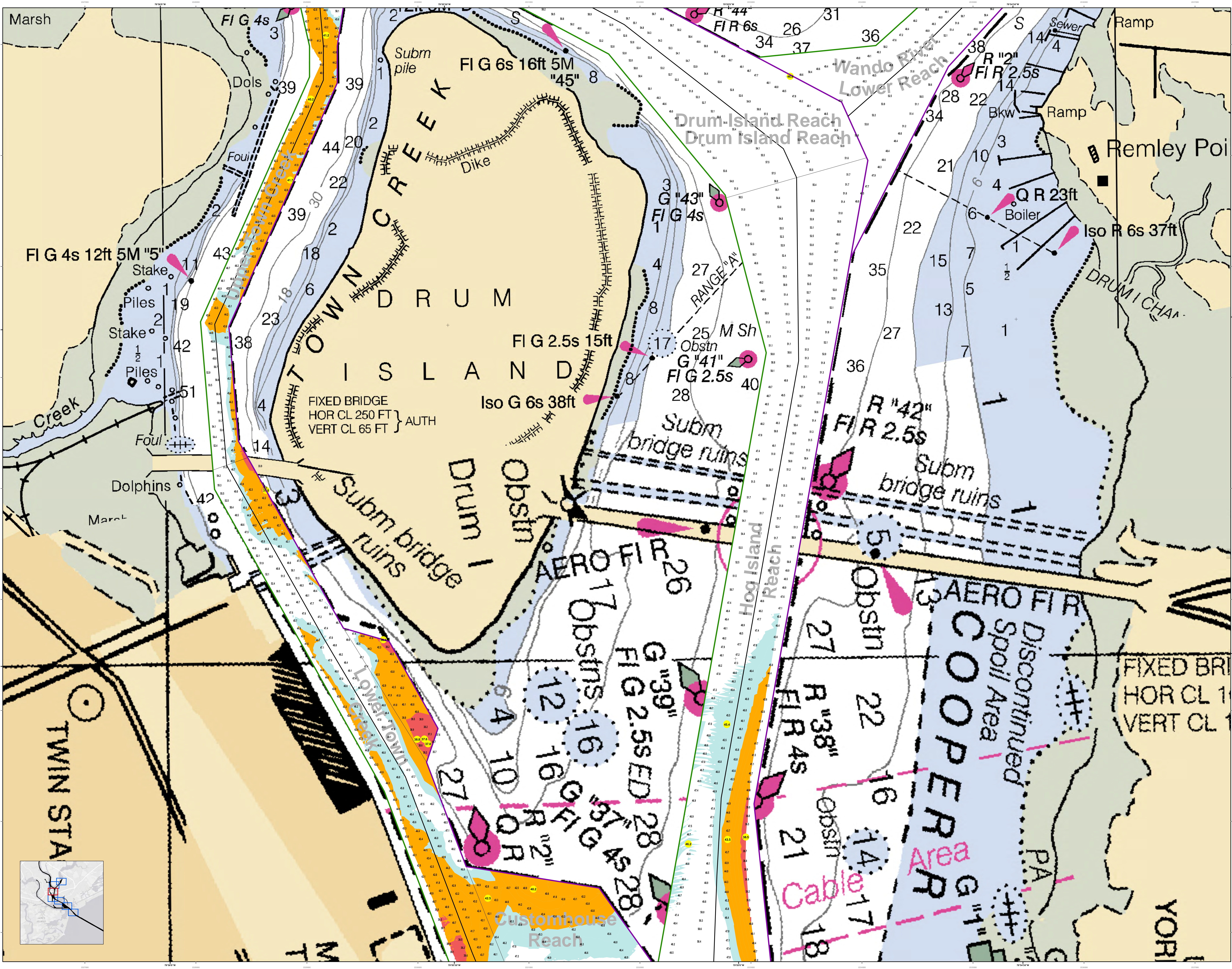
Legend

Symbol	Description
(Color swatches)	Depth Soundings
(Color swatches)	Obstruction
(Color swatches)	Navigation Line
(Color swatches)	Shoal
(Color swatches)	Channel
(Color swatches)	Other

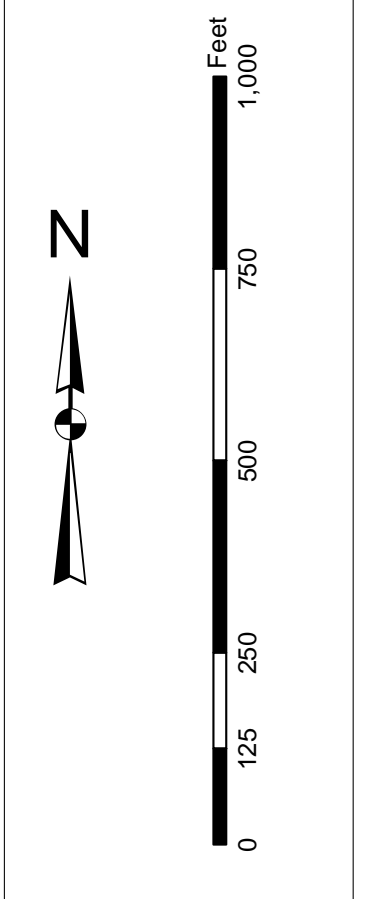
Designed By:	U.S. Army Corps of Engineers
Reviewed By:	U.S. Army Corps of Engineers
Scale:	1 inch = 250 feet
Projection:	NAD 1983 StatePlane South Carolina FIPS 3200 Feet
Survey Date:	30 Jul 2015
Production Date:	05 Aug 2015
Project Reference Number:	15000
Survey Type:	Single-beam Conduction Survey

Charleston Lower Harbor Channel
The information depicted on this chart represents the results of surveys made on the dates indicated and conditions existing at that time.
Concluded on: 30 July 2015
Charleston, South Carolina





Production Notes:
 1. This chart is a hydrographic chart and is not a nautical chart. It is not to be used for navigation.
 2. The information on this chart is based on the most recent available data.
 3. Soundings are in feet and meters.
 4. Obstructions are marked with their type and height above the datum.
 5. Structures are marked with their name and height above the datum.
 6. The datum is Mean Lower Low Water (MLLW).
 7. The chart is based on the following survey data:
 - Survey No. 10000
 - Date: 30 July 2015
 - Project Reference Number: 10000
 - Survey Type: Single-beam Bathymetry
 - Projection: NAD 1983 StatePlane South Carolina FIPS 3200 Feet



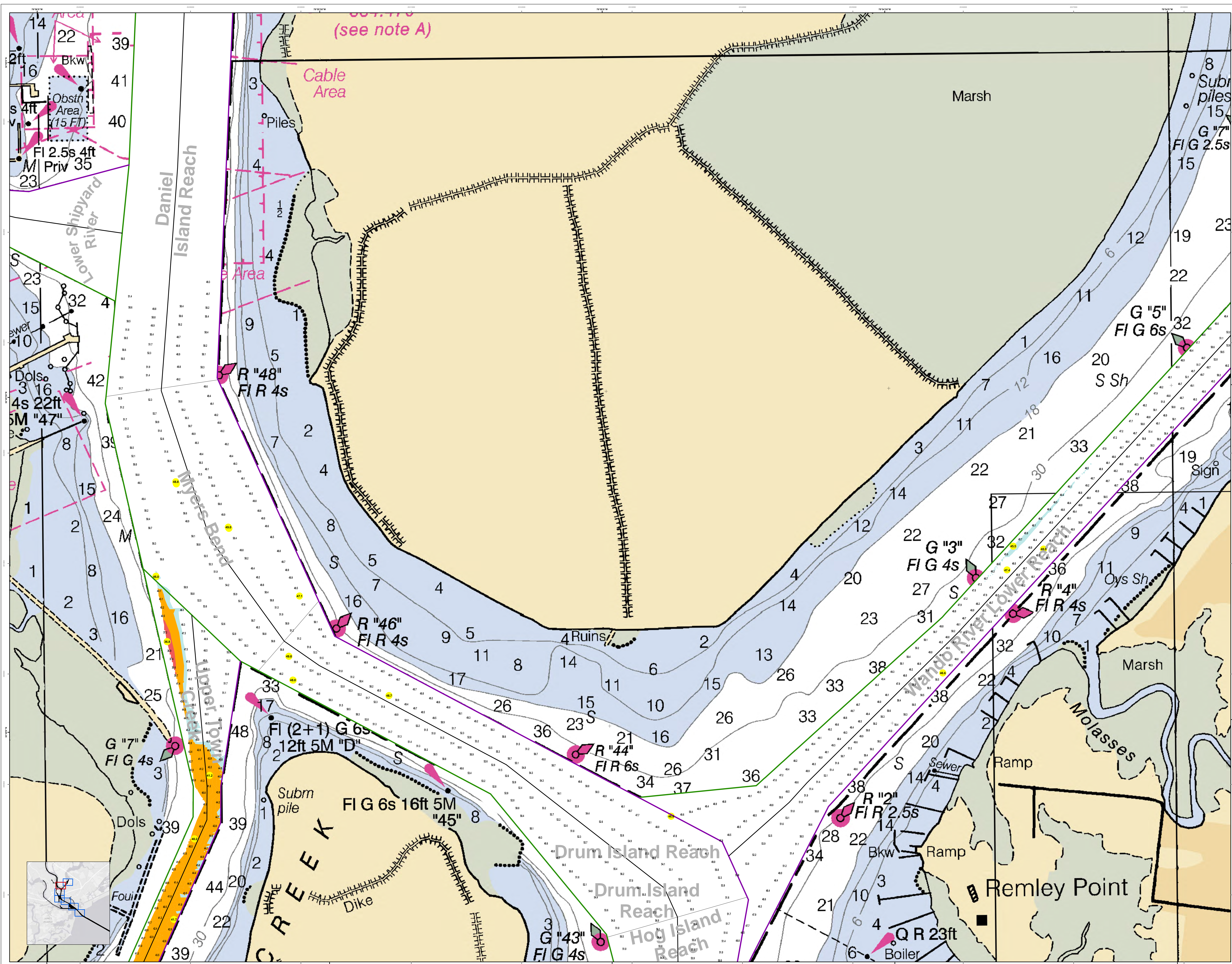
Legend:

Symbol/Color	Description
Blue	Water
Green	Shoals
Yellow	Submerged Rocks
Orange	Obstructions
Pink	Structures
Black	Other

Chart Information:

Designed By:	U.S. Army Corps of Engineers
Reviewed By:	U.S. Army Corps of Engineers
Scale:	1 inch = 250 feet
Projection:	NAD 1983 StatePlane South Carolina FIPS 3200 Feet
Production Date:	05 Aug 2015
Survey Date:	30 Jul 2015
Project Reference Number:	10000
Survey Type:	Single-beam Bathymetry

Charleston Lower Harbor Channel
 The information depicted on this map represents the results of surveys made on the dates indicated and is not to be used for navigation. The information is current as of the date of the survey. The information is not to be used for navigation. The information is not to be used for navigation. The information is not to be used for navigation.
 Concluded on: 30 July 2015
 Charleston, South Carolina



(see note A)

Cable Area

Daniel Island Reach

Myers Bend

Upper Town Creek

CREEK

Drum Island Reach

Drum Island Reach

Hog Island Reach

Marsh

Marsh

Molasses

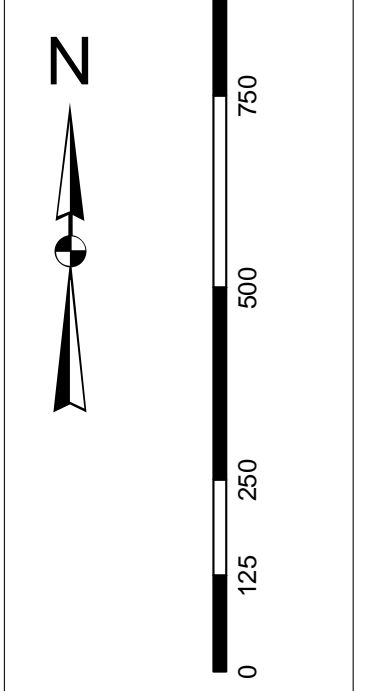
Remley Point

Legend

Soundings:
 1. 1:10,000
 2. 1:50,000
 3. 1:100,000
 4. 1:200,000
 5. 1:500,000
 6. 1:1,000,000

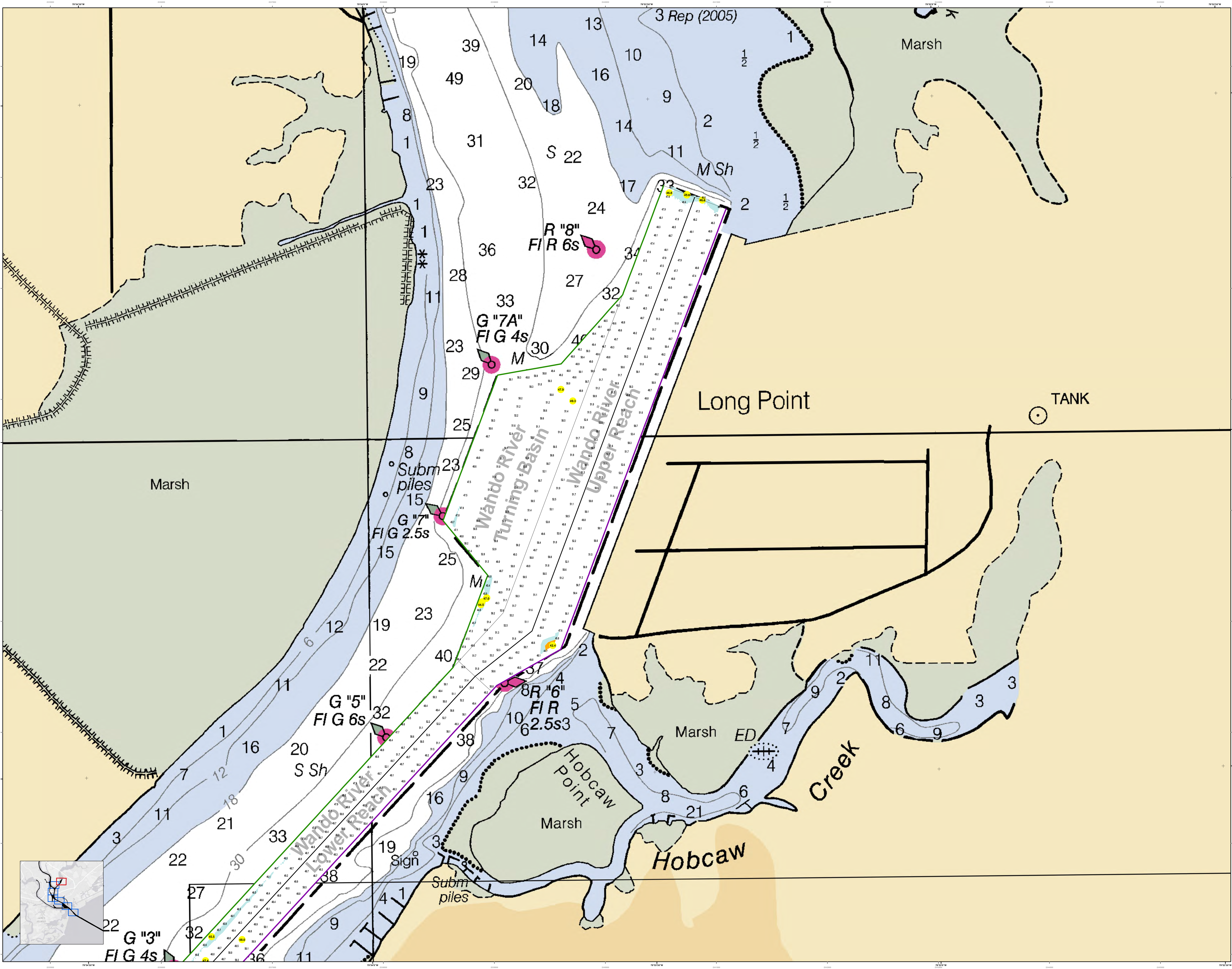
Structures:
 1. Obstruction
 2. Bridge
 3. Dam
 4. Lock
 5. Pier
 6. Quay
 7. Wharf
 8. Jetty
 9. Breakwater
 10. Light

Other:
 1. Cable Area
 2. Obstruction Area
 3. Marsh
 4. Dike
 5. Ramp
 6. Sewer
 7. Boiler



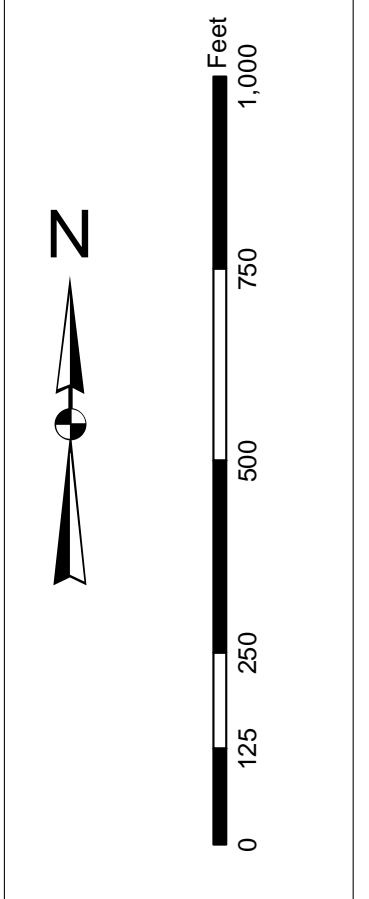
Designed By:	U.S. Army Corps of Engineers	Production Date:	05 Aug 2015
Reviewed By:	Charleston District	Project Reference Number:	13C000
Reference Scale:	1 inch = 250 feet	Survey Type:	Single-beam Bathymetry
Projection:	NAD 1983 StatePlane South Carolina FIPS 3200 Feet		

The information depicted on this map represents the results of surveys made on the dates indicated and is not intended to be used for navigation. It is general in nature and does not represent the general conditions existing at that time.
 Concluded on: 30 July 2015
 Charleston, South Carolina



In accordance with the U.S. Army Corps of Engineers, Charleston District Office, Special Operations Section, the information shown on this chart is based on the most recent available data. It is not intended to be used for navigation. Users are encouraged to use all prudent safety measures.

Production Notes:
1. This chart is a hydrographic chart.
2. Soundings are in feet and meters.
3. Soundings are to best and mean low water.
4. All depths are to mean low water.
5. All depths are to mean low water.
6. All depths are to mean low water.
7. All depths are to mean low water.
8. All depths are to mean low water.
9. All depths are to mean low water.
10. All depths are to mean low water.



Legend

Soundings: 1. Mean Low Water (MLW) 2. Mean High Water (MHW) 3. Mean Tide Level (MTL) 4. Mean Sea Level (MSL) 5. Mean High Water Neap (MHW_N) 6. Mean High Water Spring (MHW_S) 7. Mean Low Water Neap (MLW_N) 8. Mean Low Water Spring (MLW_S) 9. Mean Tide Level (MTL) 10. Mean Sea Level (MSL)

Obstructions: 1. Obstruction (O) 2. Obstruction (O) 3. Obstruction (O) 4. Obstruction (O) 5. Obstruction (O) 6. Obstruction (O) 7. Obstruction (O) 8. Obstruction (O) 9. Obstruction (O) 10. Obstruction (O)

Other Symbols: 1. Light (L) 2. Light (L) 3. Light (L) 4. Light (L) 5. Light (L) 6. Light (L) 7. Light (L) 8. Light (L) 9. Light (L) 10. Light (L)

Designed By:	Hydro Software v3.82	Production Date:	05 Aug 2015
Reviewed By:	1:50,000	Survey Date:	30 Jul 2015
Reference Scale:	1 inch = 250 feet	Project Reference Number:	13000
Projection:	NAD 1983 StatePlane South Carolina FIPS 3200 Feet	Survey Type:	Single-beam Condition Survey

Charleston Lower Harbor Channel
The information depicted on this map represents the results of surveys made on the dates indicated and conditions existing at that time.
Concluded on: 30 July 2015
Charleston, South Carolina