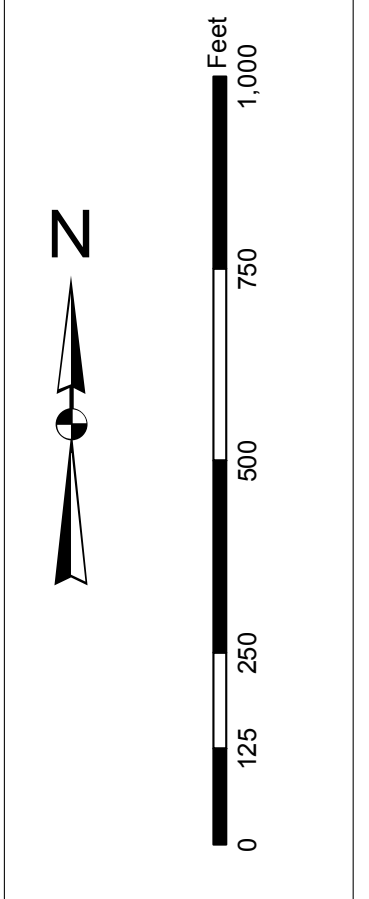


**Charleston Upper Harbor Channel Survey**  
The information depicted on this map represents the results of surveys made on the dates indicated and can only be used for the purposes for which the conditions existing at that time.  
Concluded on: **01 September 2014**  
Charleston, South Carolina

**Legend**

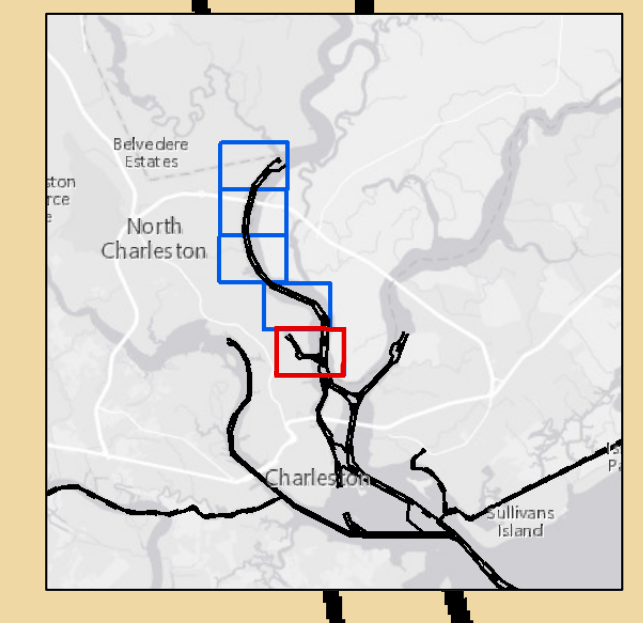
- Soundings: 1. 2014, 2. 2010, 3. 2009, 4. 2004, 5. 1997, 6. 1974
- Obstructions: 1. Pile, 2. Bkw, 3. Obstn Area (15 FT), 4. Cable Area, 5. Pipeline Area
- Other: 1. Restricted Area 334.460, 2. Restricted Area 334.470, 3. Under construction (2012)



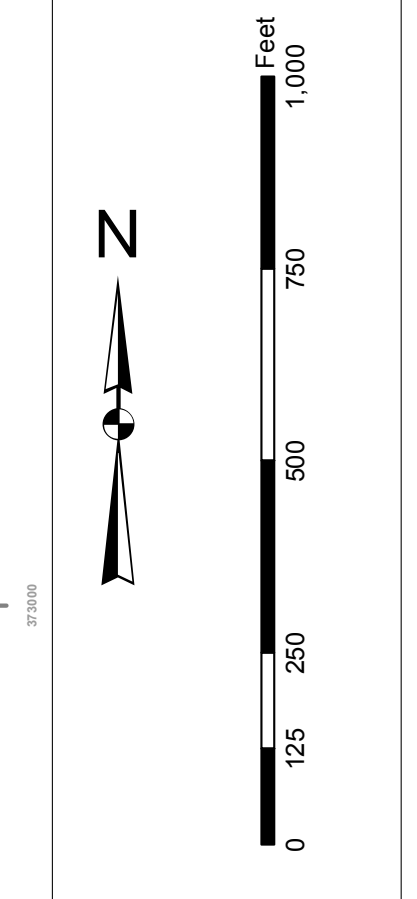
**Design Data**

Designed by:	U.S. Army Corps of Engineers, Charleston District
Reviewed by:	U.S. Army Corps of Engineers, Charleston District
Reference scale:	1 inch = 250 feet
Projection:	NAD 1983 StatePlane South Carolina FIPS 3200 Feet

**Design Date:** 14 OCT 2014  
**Project Reference Number:** 14C0010  
**Survey Type:** Single-beam Channel Survey



**Disclaimer:**  
This map was prepared by the U.S. Army Corps of Engineers, Charleston District Office. Special thanks go to the project staff, including the following: [List of names].  
This map is a preliminary product and is not to be used for navigation. It is not a substitute for a current nautical chart. It is not to be used for any purpose other than that for which it was prepared. It is not to be used for any purpose other than that for which it was prepared. It is not to be used for any purpose other than that for which it was prepared.

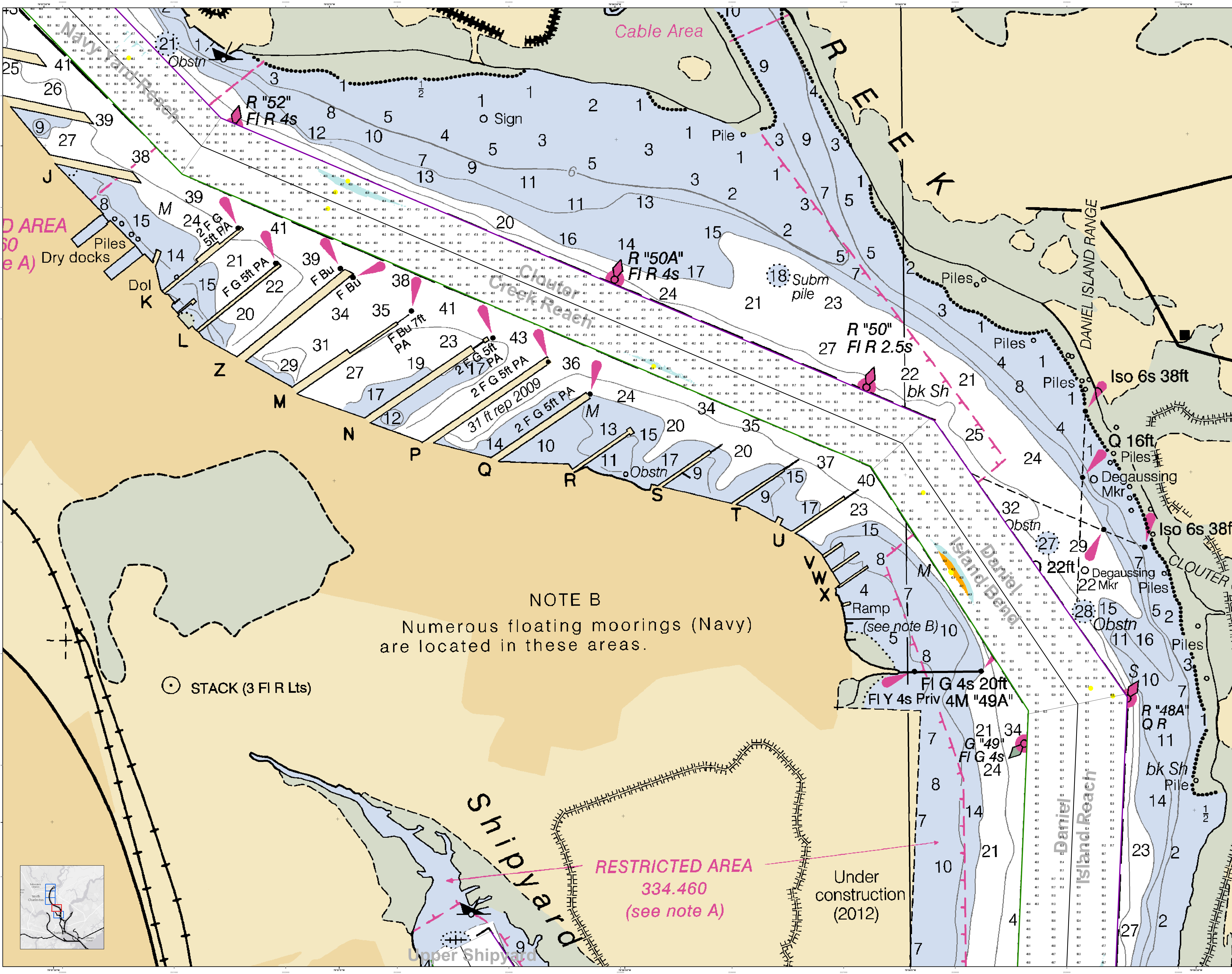


**Legend**

Symbol/Color	Description
Red dashed line	Obstruction
Blue dashed line	Obstruction
Green dashed line	Obstruction
Black dashed line	Obstruction
Yellow shaded area	Under construction (2012)
Red shaded area	Restricted Area
Blue shaded area	Water
Green shaded area	Land
Black dashed line	Channel
Black dashed line	Bank
Black dashed line	Structure
Black dashed line	Structure
Black dashed line	Structure

Designed by:	U.S. Army Corps of Engineers, Charleston District Office
Reviewed by:	U.S. Army Corps of Engineers, Charleston District Office
Scale:	1 inch = 250 feet
Projection:	NAD 1983 StatePlane South Carolina FIPS 3200 Feet
Design Date:	14 Oct 2014
Project Reference Number:	334.460
Survey Type:	Single-beam Condition Survey

**Charleston Upper Harbor Channel Survey**  
The information depicted on this map represents the results of surveys made on the dates indicated and can only be used for the purposes stated. It is not to be used for any other purpose. It is not to be used for any other purpose. It is not to be used for any other purpose.  
Concluded on: 01 September 2014  
Charleston, South Carolina

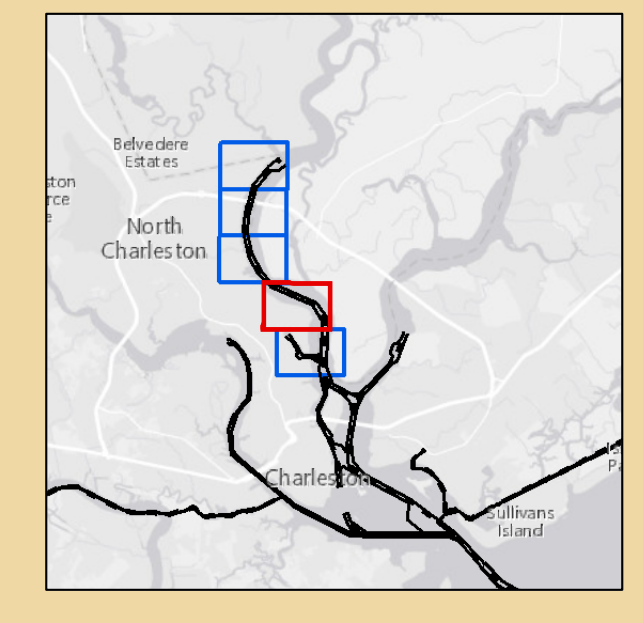


**NOTE B**  
Numerous floating moorings (Navy) are located in these areas.

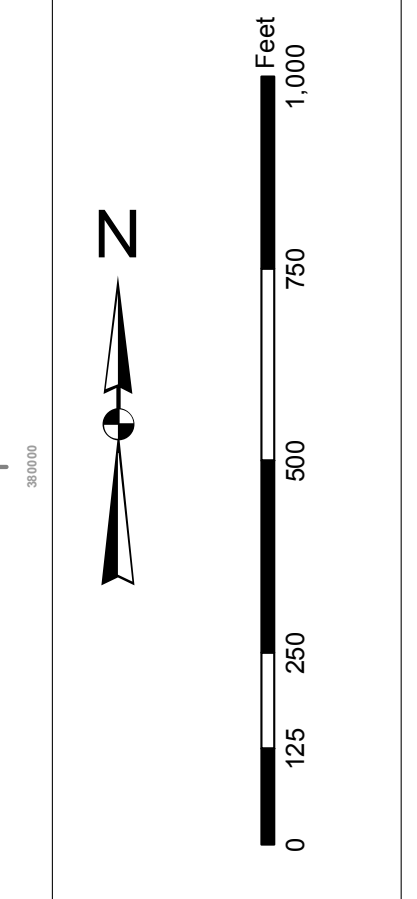
⊙ STACK (3 FI R Lts)

**RESTRICTED AREA**  
334.460  
(see note A)

Under construction (2012)



In the event that the U.S. Army Corps of Engineers, Charleston District Office, Special District Office, or District Office is unable to provide the information requested, the user should contact the District Office, Charleston District Office, 1000 North Main Street, Charleston, SC 29403-1000. The information provided is for informational purposes only and is not intended to be used for any other purpose. The user should consult the appropriate technical manual for more information. The information provided is for informational purposes only and is not intended to be used for any other purpose. The user should consult the appropriate technical manual for more information.

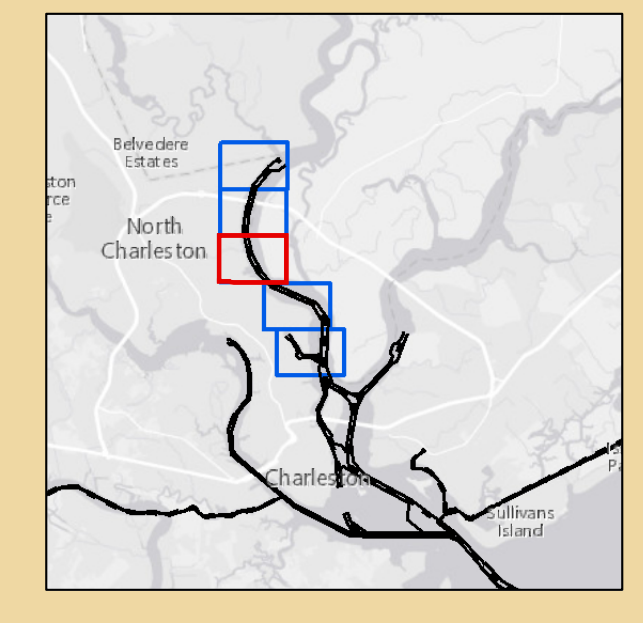
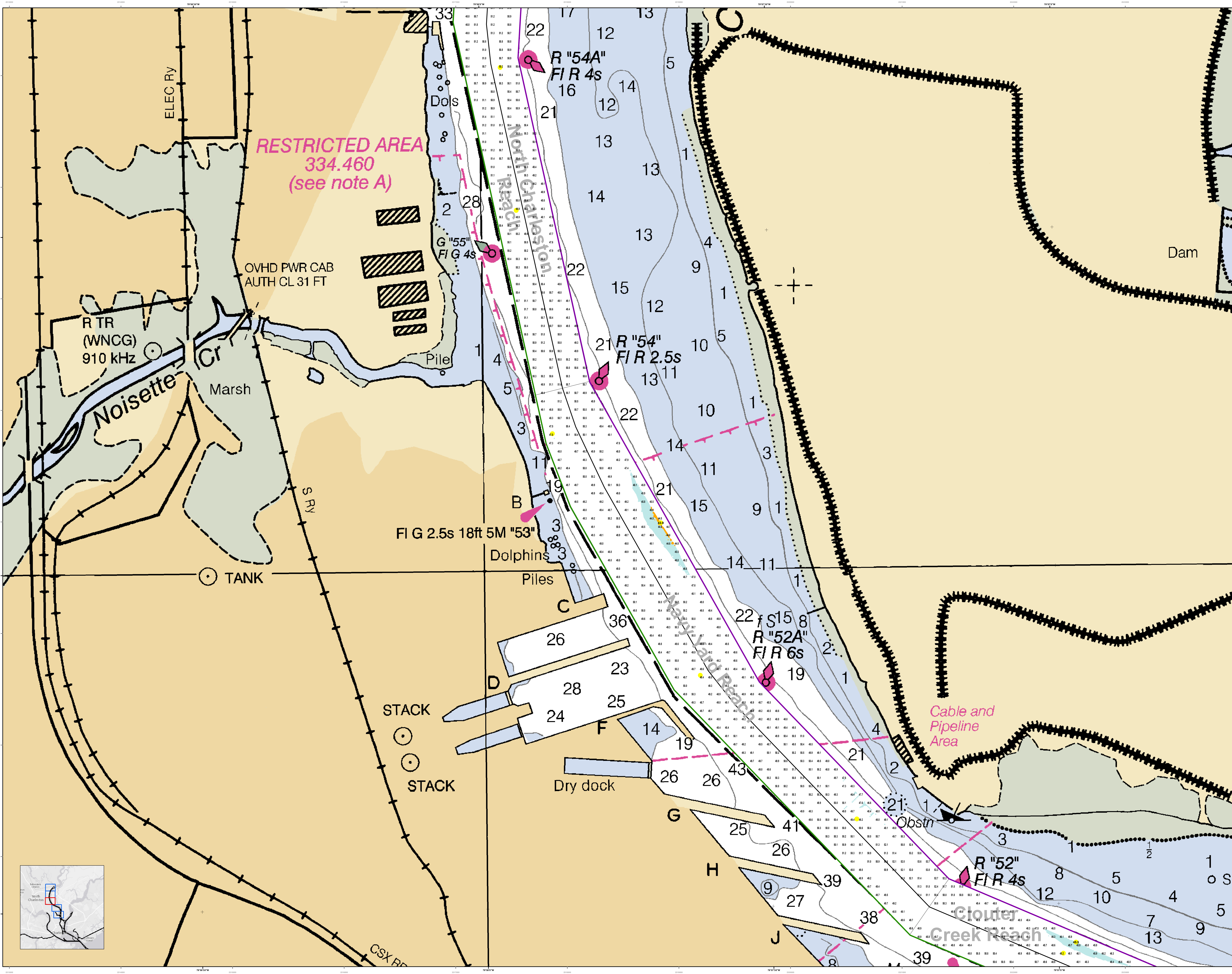


**Legend**

Symbol	Description
[Color swatches]	Water Depth
[Color swatches]	Water Level
[Color swatches]	Water Temperature
[Color swatches]	Water Quality
[Color swatches]	Water Velocity
[Color swatches]	Water Turbidity
[Color swatches]	Water Salinity
[Color swatches]	Water Conductivity
[Color swatches]	Water Dissolved Oxygen
[Color swatches]	Water pH
[Color swatches]	Water Chlorophyll a
[Color swatches]	Water Chlorophyll b
[Color swatches]	Water Chlorophyll c
[Color swatches]	Water Chlorophyll d
[Color swatches]	Water Chlorophyll e
[Color swatches]	Water Chlorophyll f
[Color swatches]	Water Chlorophyll g
[Color swatches]	Water Chlorophyll h
[Color swatches]	Water Chlorophyll i
[Color swatches]	Water Chlorophyll j
[Color swatches]	Water Chlorophyll k
[Color swatches]	Water Chlorophyll l
[Color swatches]	Water Chlorophyll m
[Color swatches]	Water Chlorophyll n
[Color swatches]	Water Chlorophyll o
[Color swatches]	Water Chlorophyll p
[Color swatches]	Water Chlorophyll q
[Color swatches]	Water Chlorophyll r
[Color swatches]	Water Chlorophyll s
[Color swatches]	Water Chlorophyll t
[Color swatches]	Water Chlorophyll u
[Color swatches]	Water Chlorophyll v
[Color swatches]	Water Chlorophyll w
[Color swatches]	Water Chlorophyll x
[Color swatches]	Water Chlorophyll y
[Color swatches]	Water Chlorophyll z

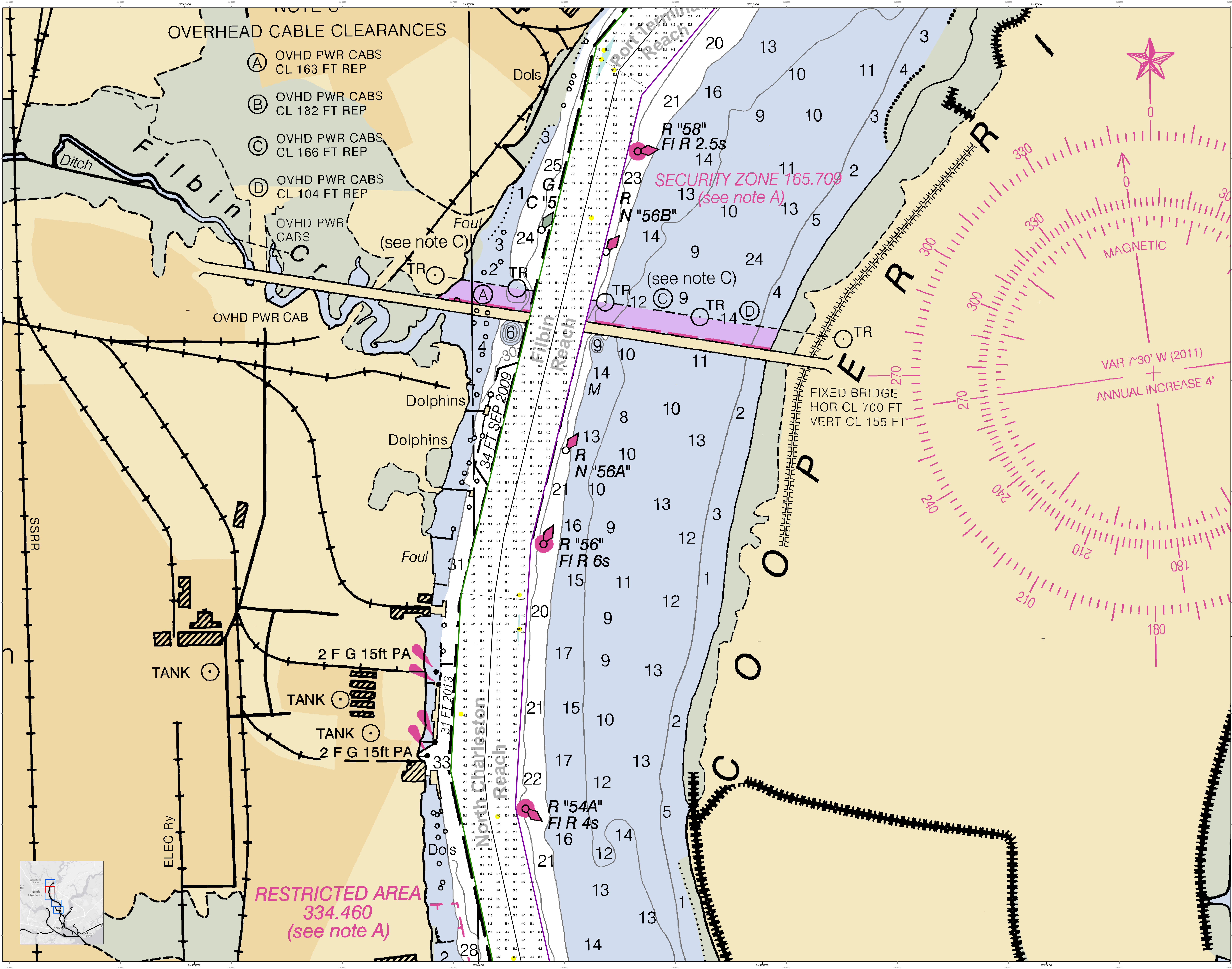
U.S. Army Corps of Engineers Charleston District Office Charleston, South Carolina	Design Date: 14 Oct 2014 Project Reference Number: 1400000000 Survey Type: Single-beam Condition Survey
Designed by: [Name] Reviewed by: [Name] Reference scale: 1 inch = 250 feet Projection: NAD 1983 StatePlane South Carolina FIPS 3200 Feet	

**Charleston Upper Harbor Channel Survey**  
The information depicted on this map represents the results of surveys made on the dates indicated and shall be used for general information only. It is not intended to be used for any other purpose. The user should consult the appropriate technical manual for more information.  
Concluded on: 01 September 2014  
Charleston, South Carolina



OVERHEAD CABLE CLEARANCES

- (A) OVHD PWR CABS  
CL 163 FT REP
- (B) OVHD PWR CABS  
CL 182 FT REP
- (C) OVHD PWR CABS  
CL 166 FT REP
- (D) OVHD PWR CABS  
CL 104 FT REP



RESTRICTED AREA  
334.460  
(see note A)

SECURITY ZONE 165.709  
(see note A)

FIXED BRIDGE  
HOR CL 700 FT  
VERT CL 155 FT

MAGNETIC  
VAR 7°30' W (2011)  
ANNUAL INCREASE 4'

Legend

Chart Symbols

Color Key

Scale

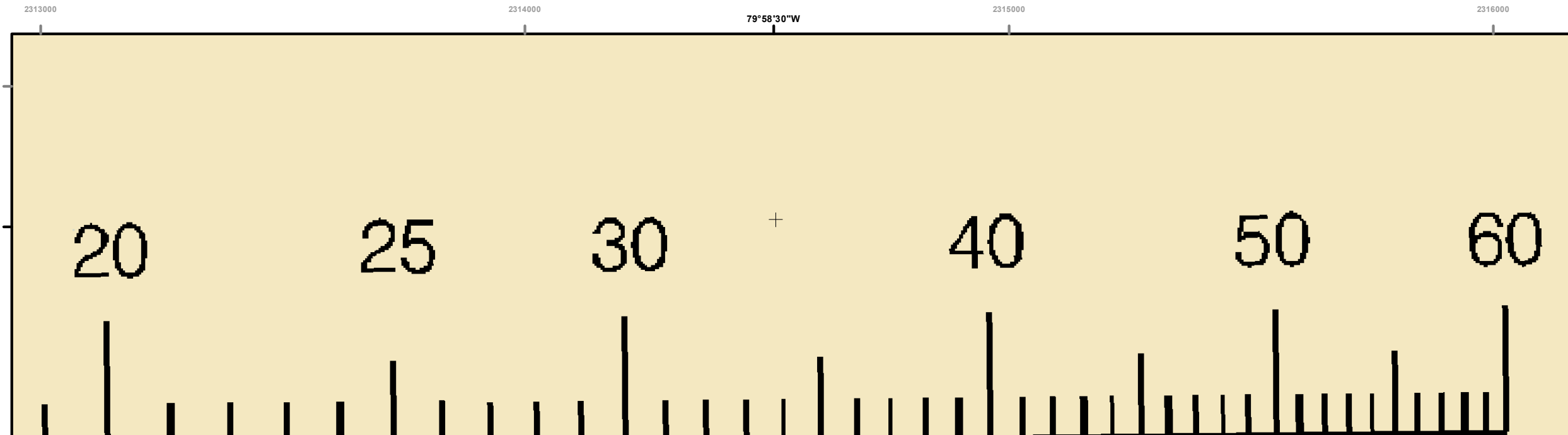
North Arrow

Projection

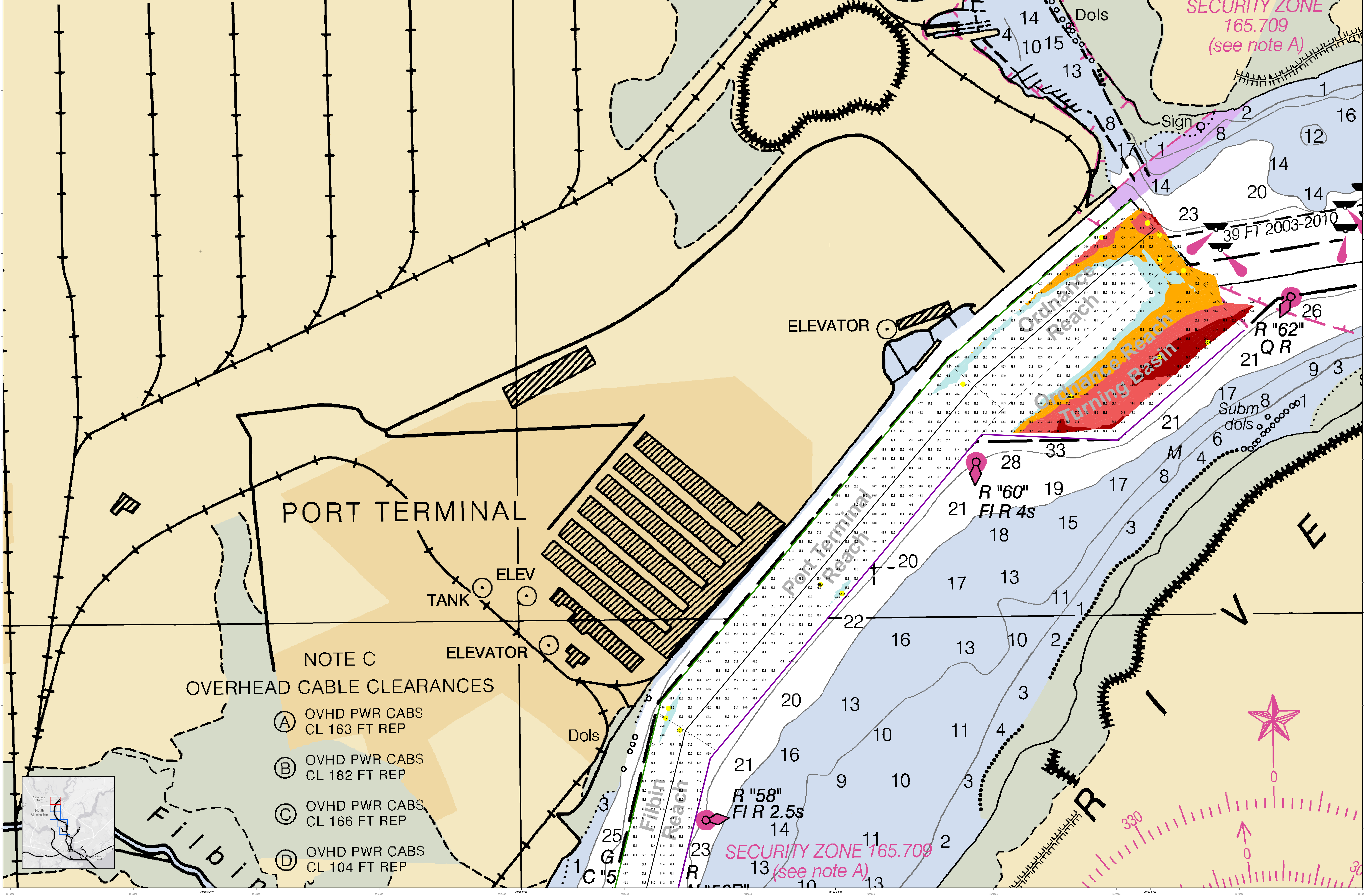
U.S. Army Corps of Engineers  
Charleston District  
Charleston, South Carolina

Designed by:	Hydro Software v3.6.1	Creation Date:	14 OCT 2014
Reviewed by:	1:50,000	Project Reference Number:	1602010
Reference scale:	1 inch = 250 feet	Survey Type:	Single-beam Condition Survey
Projection:	NAD 1983 StatePlane South Carolina FIPS 3800 Feet		

Charleston Upper Harbor Channel Survey  
The information depicted on this map represents the results of surveys made on the dates indicated and conditions existing at that time.  
Concluded on: 01 September 2014  
Charleston, South Carolina

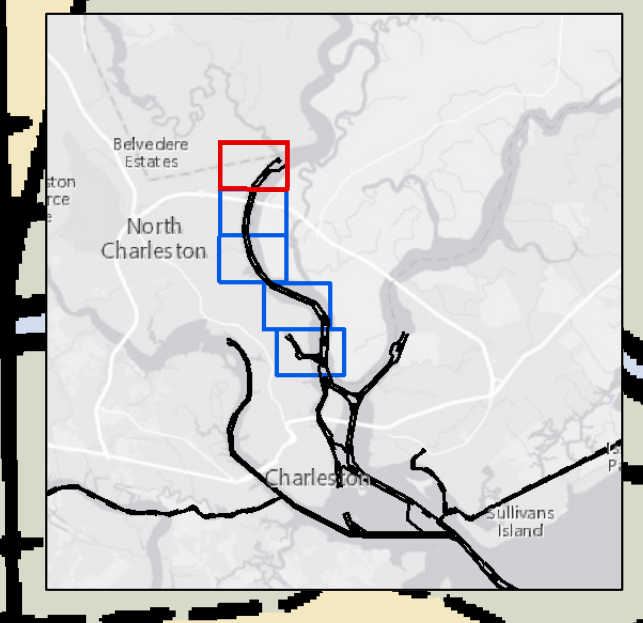


Without changing divider spread, place  
in 15 minutes, the speed is 16.0 knots.



NOTE C  
OVERHEAD CABLE CLEARANCES

- (A) OVHD PWR CABS  
CL 163 FT REP
- (B) OVHD PWR CABS  
CL 182 FT REP
- (C) OVHD PWR CABS  
CL 166 FT REP
- (D) OVHD PWR CABS  
CL 104 FT REP



**RESTRICTED**  
3  
(see note A)

**SECURITY ZONE**  
165.709  
(see note A)

**SECURITY ZONE** 165.709  
(see note A)

U.S. Army Corps of Engineers  
Charleston District

**Charleston Upper Harbor Channel Survey**  
The information depicted on this map represents the results of surveys made on the dates indicated and can only be used for the purposes and conditions existing at that time.  
Concluded on: **01 September 2014**  
Charleston, South Carolina

DESIGNED BY: U.S. Army Corps of Engineers, District of Engineers, Charleston, South Carolina  
REVIEWED BY: U.S. Army Corps of Engineers, District of Engineers, Charleston, South Carolina  
PROJECT: Upper Harbor Channel Survey  
PROJECT NUMBER: 165.709  
SURVEY TYPE: Single-beam Condition Survey  
DESIGN DATE: 14 Oct 2014  
CREATION DATE: 14 Oct 2014  
PROJECT REFERENCE NUMBER: 165.709  
SURVEY TYPE: Single-beam Condition Survey  
DESIGNED BY: U.S. Army Corps of Engineers, District of Engineers, Charleston, South Carolina  
REVIEWED BY: U.S. Army Corps of Engineers, District of Engineers, Charleston, South Carolina  
PROJECT: Upper Harbor Channel Survey  
PROJECT NUMBER: 165.709  
SURVEY TYPE: Single-beam Condition Survey  
DESIGN DATE: 14 Oct 2014  
CREATION DATE: 14 Oct 2014  
PROJECT REFERENCE NUMBER: 165.709  
SURVEY TYPE: Single-beam Condition Survey

Scale: 1 inch = 250 feet  
Projection: NAD 1983 StatePlane South Carolina FIPS 3200 Feet

SHEET REFERENCE NUMBER: C002  
SHEET 5 OF 5