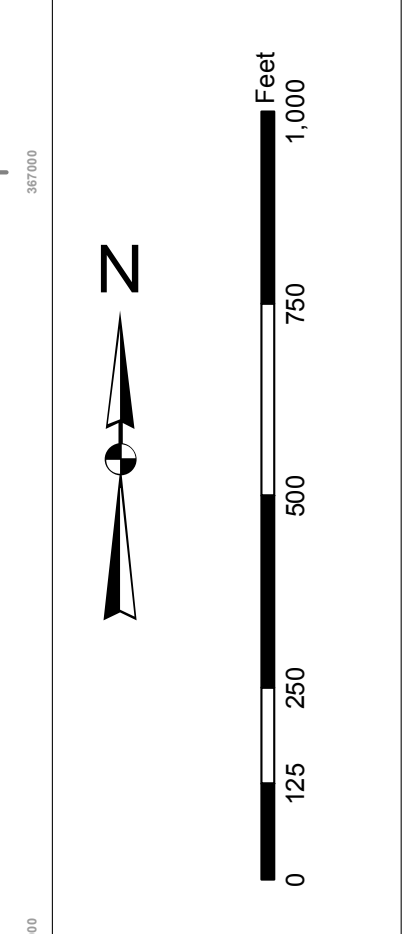


Provision Notes:
 1. This drawing is a preliminary drawing and is not to be used for construction.
 2. All dimensions are in feet and inches.
 3. All elevations are in feet above Mean Low Water (MLW).
 4. All bearings are in degrees, minutes, and seconds.
 5. All distances are in feet.
 6. All areas are in square feet.
 7. All volumes are in cubic feet.
 8. All weights are in pounds.
 9. All materials are in standard units.
 10. All quantities are in standard units.
 11. All quantities are in standard units.
 12. All quantities are in standard units.

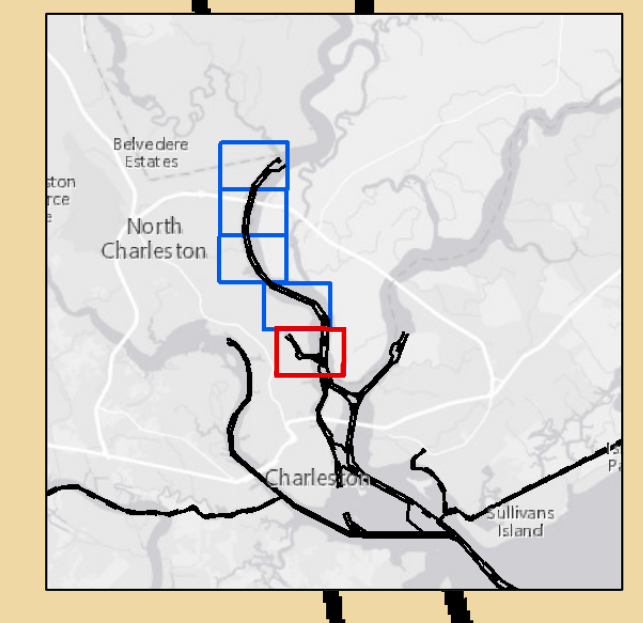
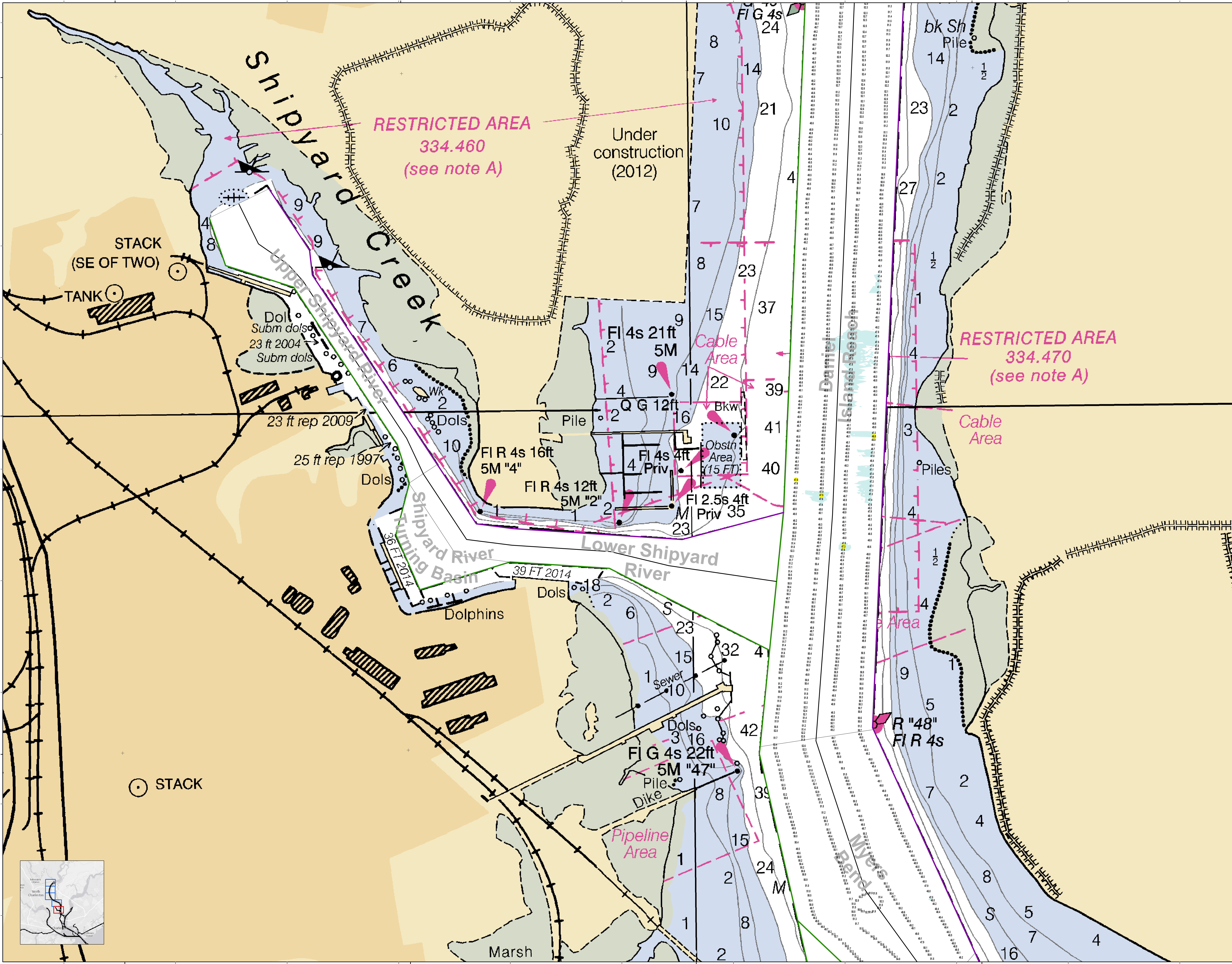


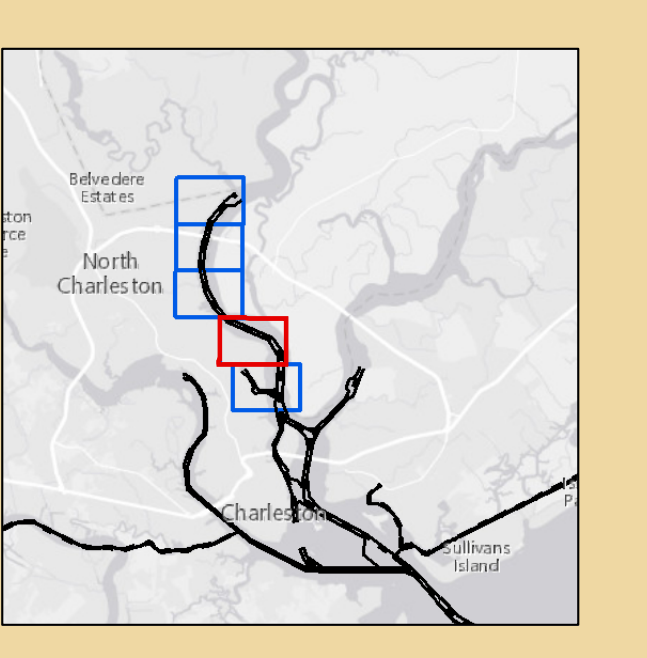
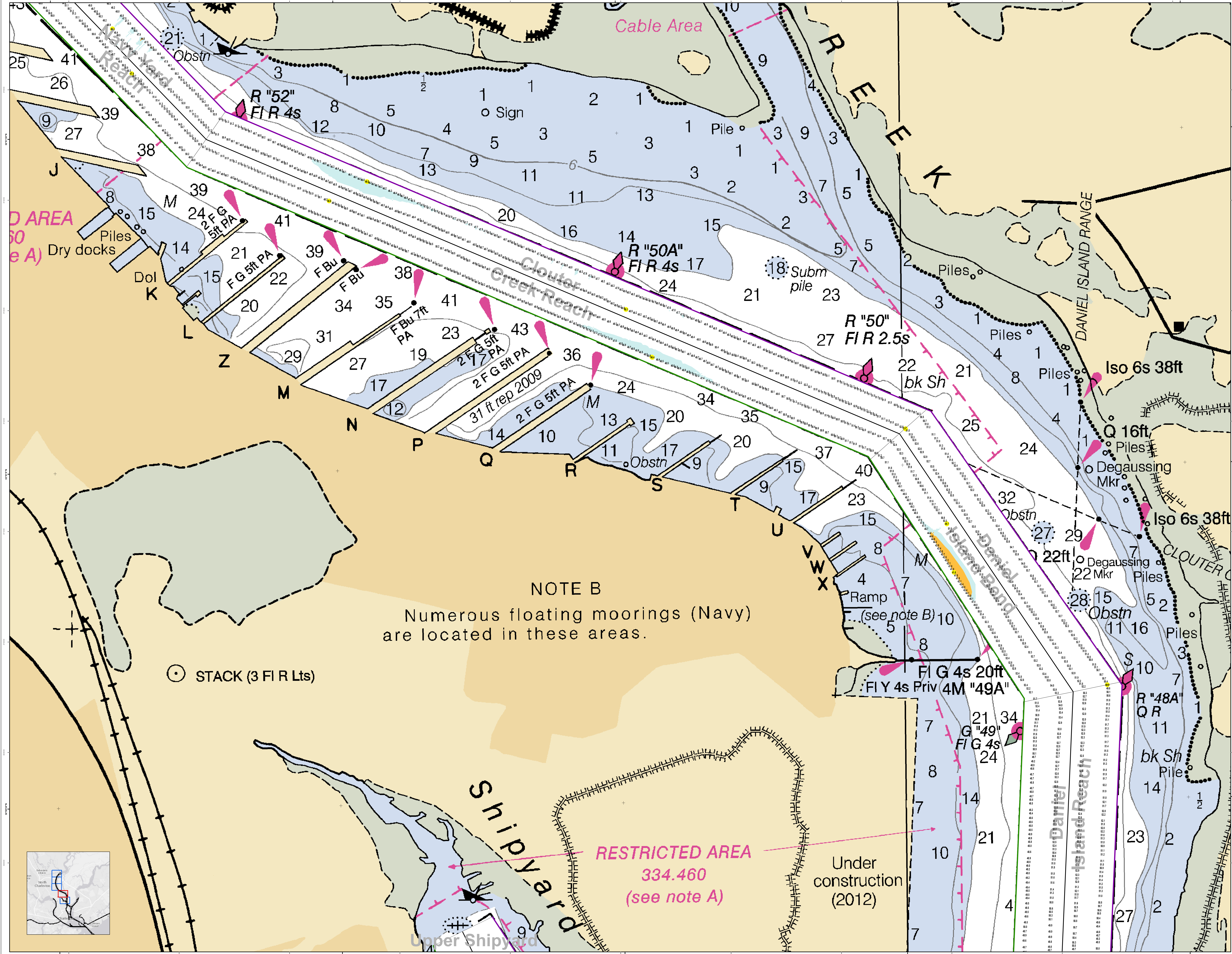
Legend

Symbol/Color	Description
Blue line	Water
Green line	Grass
Yellow line	Barren
Orange line	Forest
Red line	Urban
Black line	Other
Blue circle	Water
Green circle	Grass
Yellow circle	Barren
Orange circle	Forest
Red circle	Urban
Black circle	Other

Designed by:	U.S. Army Corps of Engineers
Reviewed by:	U.S. Army Corps of Engineers
Checked by:	U.S. Army Corps of Engineers
Approved by:	U.S. Army Corps of Engineers
Design Date:	28 Nov 2014
Project Reference Number:	62020010
Survey Type:	Single-beam Channel Survey
Reference Scale:	1 inch = 250 feet
Projection:	NAD 1983 StatePlane South Carolina FIPS 3200 Feet

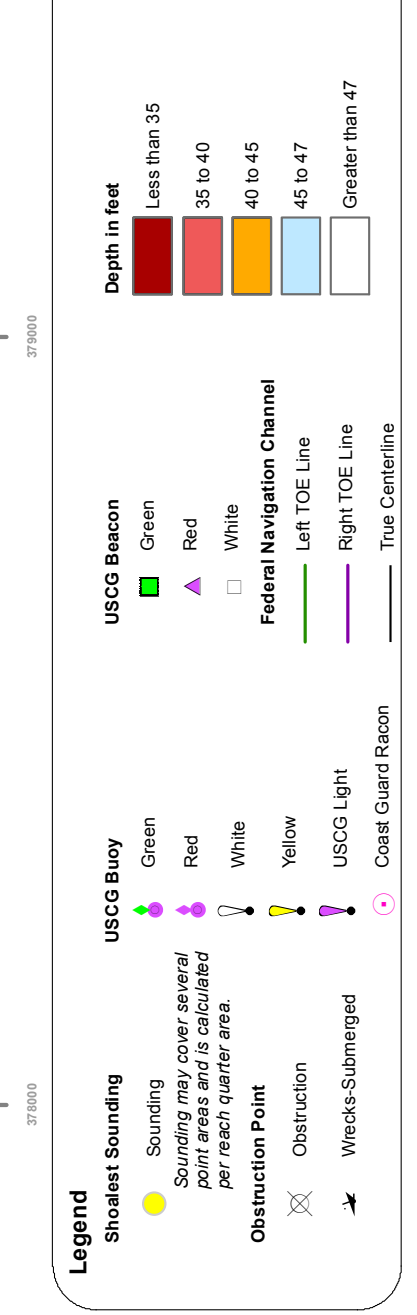
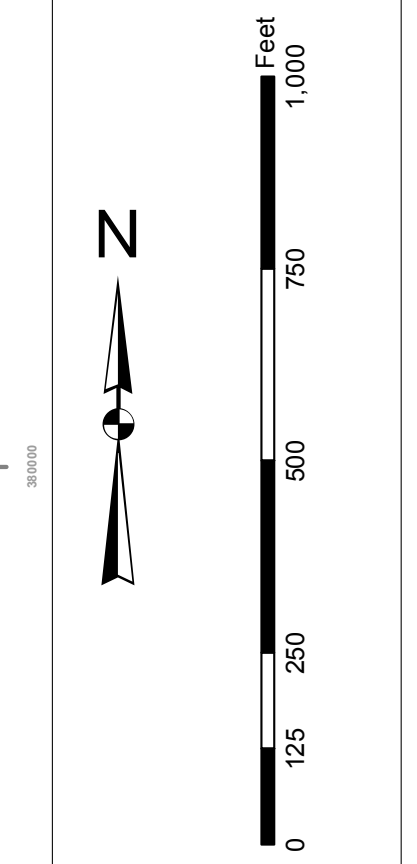
Charleston Upper Harbor Channel Survey
 The information depicted on this map represents the results of surveys made on the dates indicated and can only be used for the purposes stated in the general conditions existing at that time.
 Concluded on: 21 November 2014
 Charleston, South Carolina





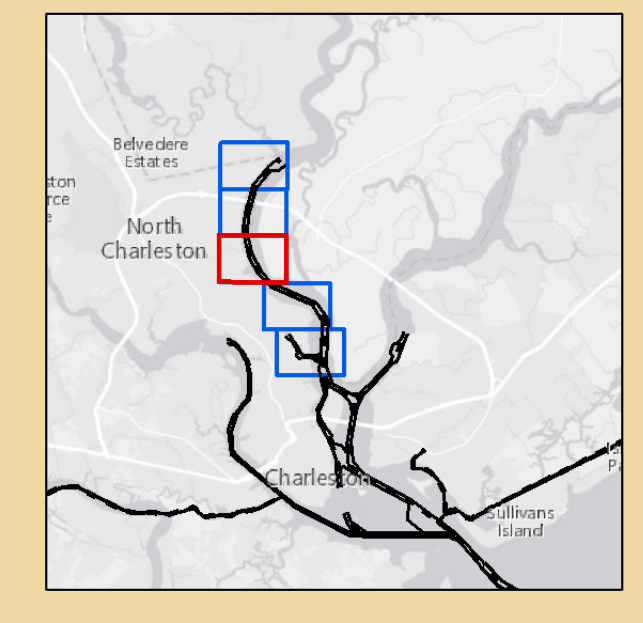
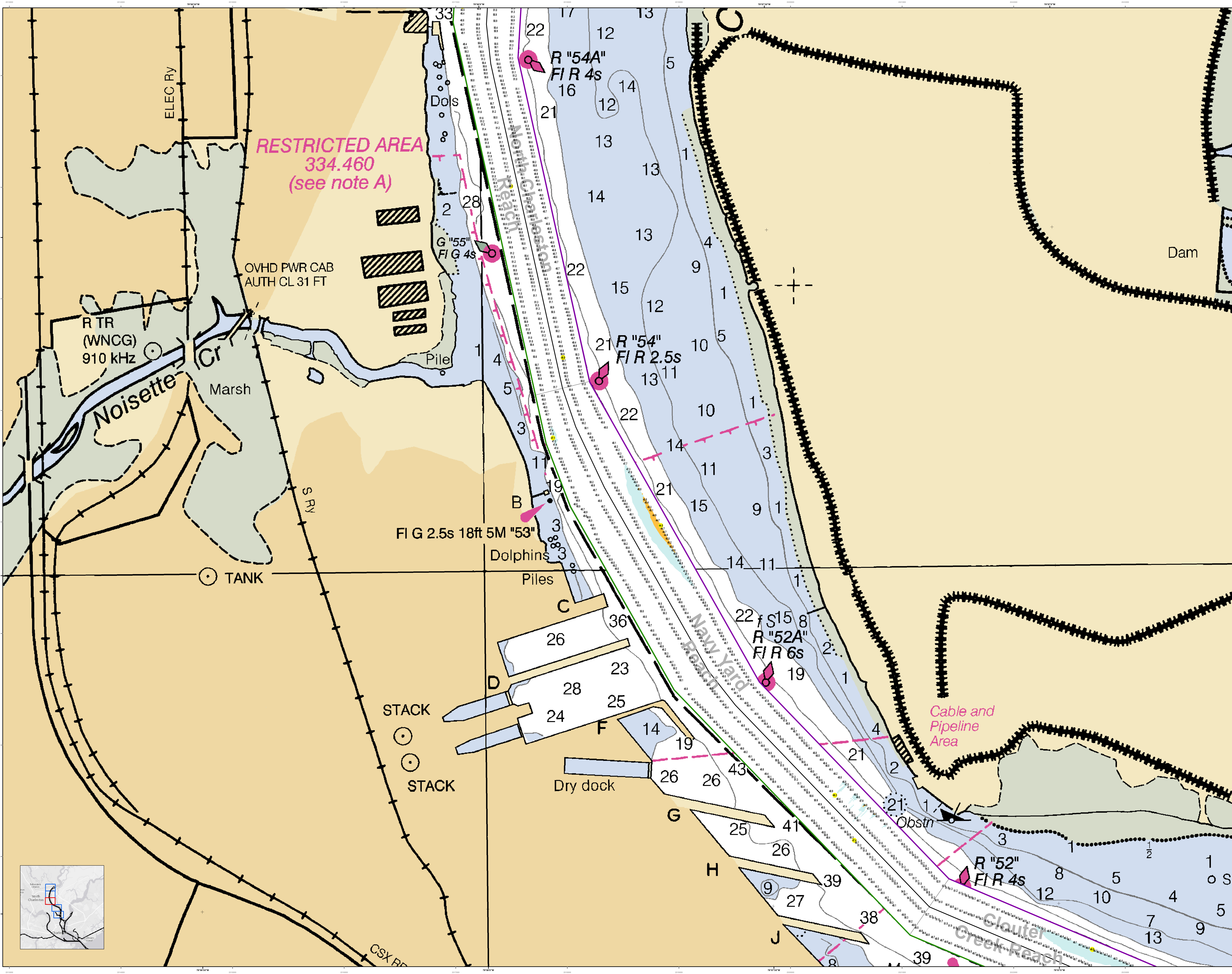
In the event that the U.S. Army Corps of Engineers, Charleston District Office, Special District Engineer, is notified of any unauthorized activities within the restricted area, the District Office will take appropriate action to enforce the restrictions. The information shown on this map represents the results of surveys made on the dates indicated and conditions existing at that time. The information is for general information only and is not intended to be used for navigation. All users are encouraged to use all prudent safety measures.

Projections:
1. North Carolina State Plane
2. UTM
3. State Plane
4. NAD 83
5. UTM
6. NAD 83
7. UTM
8. NAD 83
9. UTM
10. NAD 83
11. UTM
12. NAD 83
13. UTM
14. NAD 83
15. UTM
16. NAD 83
17. UTM
18. NAD 83
19. UTM
20. NAD 83
21. UTM
22. NAD 83
23. UTM
24. NAD 83
25. UTM
26. NAD 83
27. UTM
28. NAD 83
29. UTM
30. NAD 83
31. UTM
32. NAD 83
33. UTM
34. NAD 83
35. UTM
36. NAD 83
37. UTM
38. NAD 83
39. UTM
40. NAD 83
41. UTM
42. NAD 83
43. UTM
44. NAD 83
45. UTM
46. NAD 83
47. UTM
48. NAD 83
49. UTM
50. NAD 83
51. UTM
52. NAD 83
53. UTM
54. NAD 83
55. UTM
56. NAD 83
57. UTM
58. NAD 83
59. UTM
60. NAD 83
61. UTM
62. NAD 83
63. UTM
64. NAD 83
65. UTM
66. NAD 83
67. UTM
68. NAD 83
69. UTM
70. NAD 83
71. UTM
72. NAD 83
73. UTM
74. NAD 83
75. UTM
76. NAD 83
77. UTM
78. NAD 83
79. UTM
80. NAD 83
81. UTM
82. NAD 83
83. UTM
84. NAD 83
85. UTM
86. NAD 83
87. UTM
88. NAD 83
89. UTM
90. NAD 83
91. UTM
92. NAD 83
93. UTM
94. NAD 83
95. UTM
96. NAD 83
97. UTM
98. NAD 83
99. UTM
100. NAD 83



Designed by:	Hydro Software v3.6.1	Creation Date:	28 Nov 2014
Reviewed by:	1:50,000	Project Reference Number:	26 NOV 2014
Reference scale:	1 inch = 250 feet	Survey Type:	POD/POD
Projection:	NAD 1983 StatePlane South Carolina FIPS 3200 Feet	Survey Method:	Single-beam Condition Survey

Charleston Upper Harbor Channel Survey
The information depicted on this map represents the results of surveys made on the dates indicated and conditions existing at that time. The information is for general information only and is not intended to be used for navigation. All users are encouraged to use all prudent safety measures.
Concluded on: 21 November 2014
Charleston, South Carolina



OVERHEAD CABLE CLEARANCES

- (A) OVHD PWR CABS
CL 163 FT REP
- (B) OVHD PWR CABS
CL 182 FT REP
- (C) OVHD PWR CABS
CL 166 FT REP
- (D) OVHD PWR CABS
CL 104 FT REP

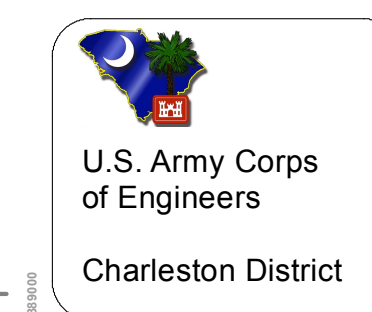
OVHD PWR CABS
(see note C)

OVHD PWR CAB

FIXED BRIDGE
HOR CL 700 FT
VERT CL 155 FT

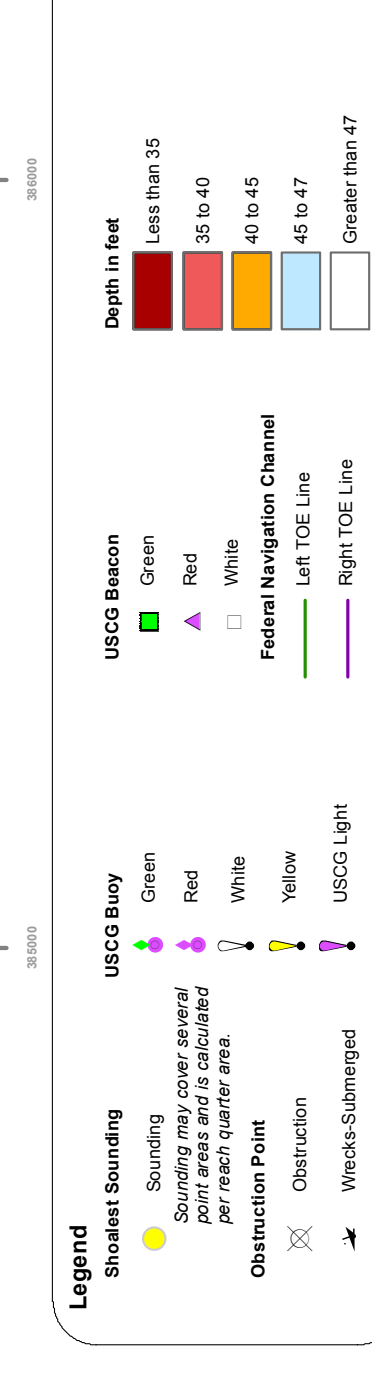
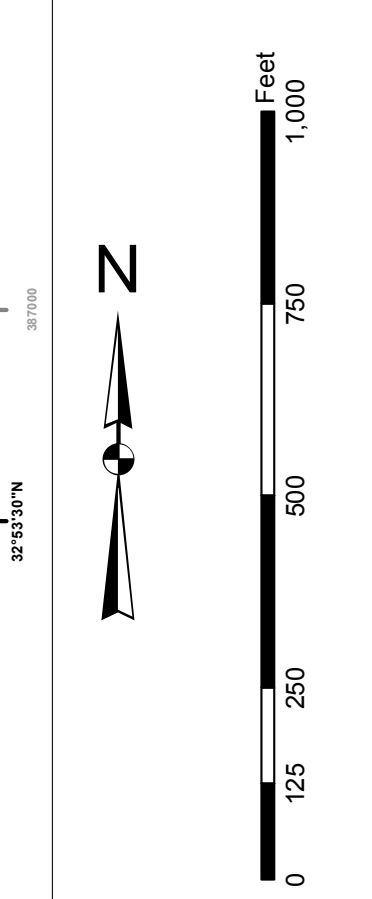
MAGNETIC
VAR 7°30' W (2011)
ANNUAL INCREASE 4'

RESTRICTED AREA
334.460
(see note A)



U.S. Army Corps of Engineers
Charleston District

Provisional Notes:
1. This is a preliminary design and construction plan. It is not to be used for construction without the approval of the District Engineer.
2. All dimensions are in feet and inches, unless otherwise noted.
3. All bearings are true bearings, unless otherwise noted.
4. All elevations are above mean sea level, unless otherwise noted.
5. All distances are in feet, unless otherwise noted.
6. All areas are in square feet, unless otherwise noted.
7. All volumes are in cubic feet, unless otherwise noted.
8. All quantities are in units, unless otherwise noted.
9. All materials are to be as specified in the contract documents.
10. All work is to be done in accordance with the contract documents.
11. All work is to be done in accordance with the specifications.
12. All work is to be done in accordance with the drawings.
13. All work is to be done in accordance with the schedule.
14. All work is to be done in accordance with the budget.
15. All work is to be done in accordance with the safety plan.
16. All work is to be done in accordance with the environmental plan.
17. All work is to be done in accordance with the quality control plan.
18. All work is to be done in accordance with the risk management plan.
19. All work is to be done in accordance with the communication plan.
20. All work is to be done in accordance with the stakeholder engagement plan.



Design Date	Creation Date
28 Nov 2014	28 Nov 2014

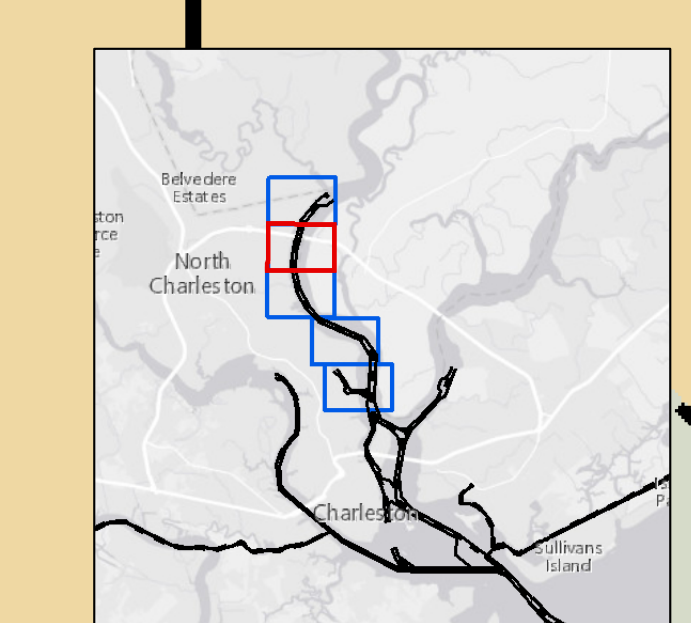
Design Scale	Design Date
1:5000	28 Nov 2014

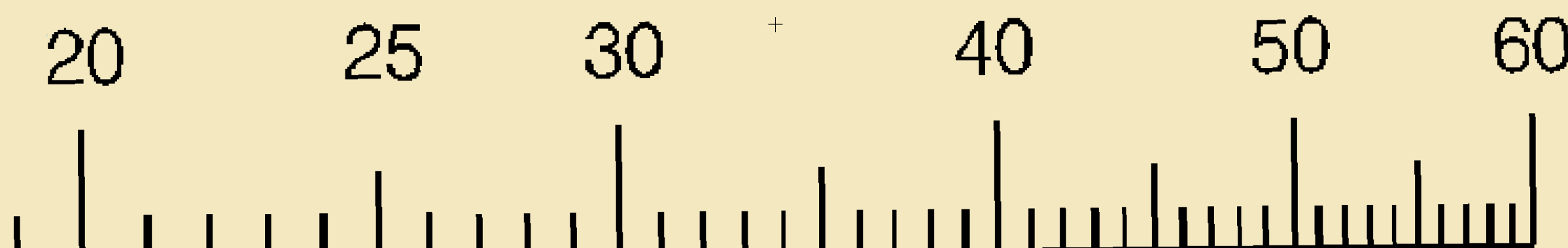
Project Reference Number	Project Reference Number
13000	13000

Survey Type	Survey Type
Single-beam Condition Survey	Single-beam Condition Survey

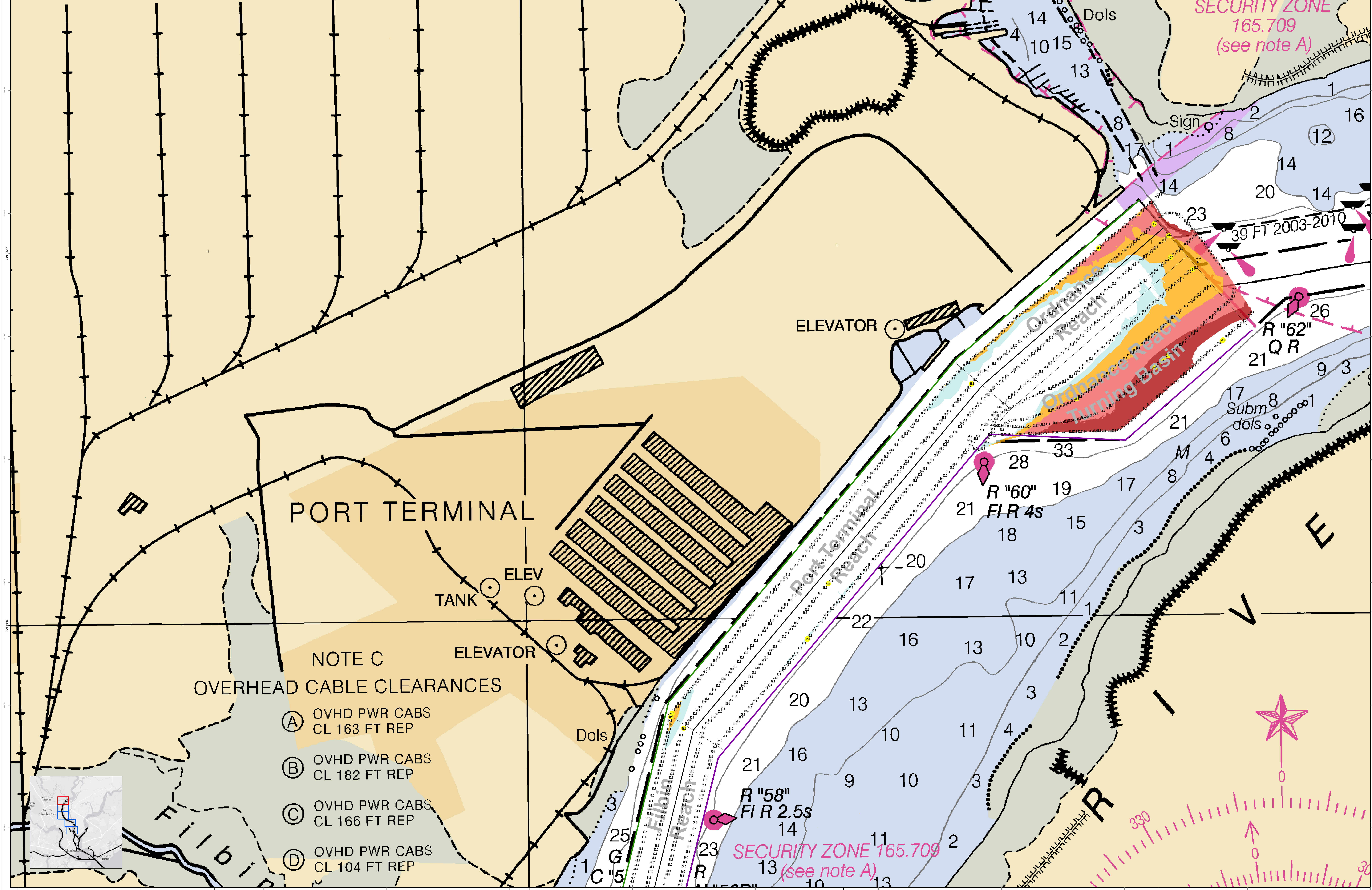
Projection	Projection
NAD 1983 StatePlane South Carolina FIPS 3200 Feet	NAD 1983 StatePlane South Carolina FIPS 3200 Feet

Charleston Upper Harbor Channel Survey
The information depicted on this map represents the results of surveys made on the dates indicated and call on on the dates indicated and conditions existing at that time.
Concluded on: 21 November 2014
Charleston, South Carolina





Without changing divider spread, place in 15 minutes, the speed is 16.0 knots.



PORT TERMINAL

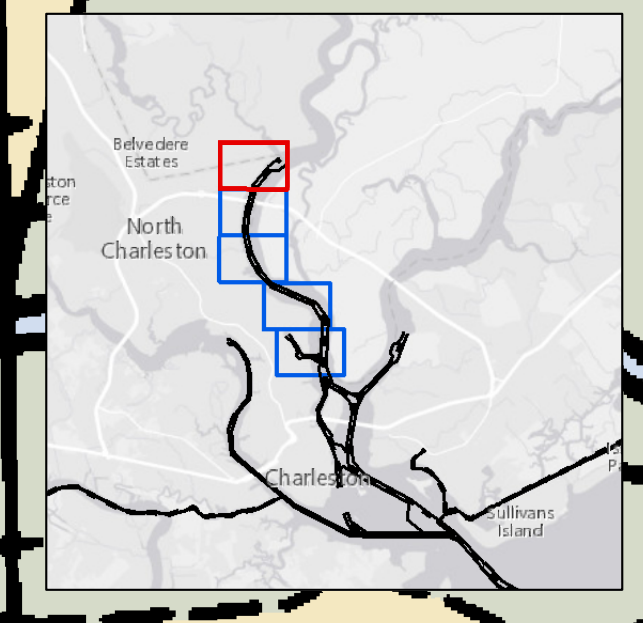
ELEVATOR

SECURITY ZONE 165.709 (see note A)

SECURITY ZONE 165.709 (see note A)

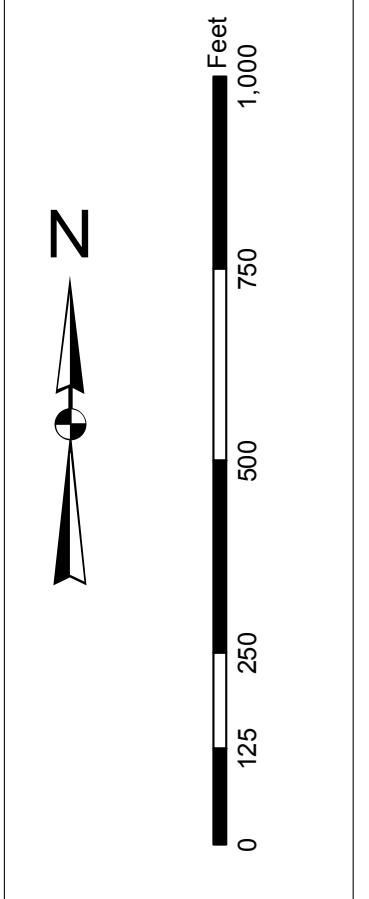
NOTE C
OVERHEAD CABLE CLEARANCES

- (A) OVHD PWR CABS
CL 163 FT REP
- (B) OVHD PWR CABS
CL 182 FT REP
- (C) OVHD PWR CABS
CL 166 FT REP
- (D) OVHD PWR CABS
CL 104 FT REP



In the event that the U.S. Army Corps of Engineers, Charleston District Office, Special District Office, or District Engineer is notified of any potential safety hazard, the District Office, Special District Office, or District Engineer will be notified immediately and will take appropriate action to address the hazard. This notice is for informational purposes only and does not constitute an offer of insurance or any other financial product. The information provided herein is for informational purposes only and does not constitute an offer of insurance or any other financial product. The information provided herein is for informational purposes only and does not constitute an offer of insurance or any other financial product.

Projections: UTM
Datum: NAD 83
Units: Meter
Scale: 1:50,000
Projection: UTM
Zone: 18N
Datum: NAD 83
Units: Meter
Scale: 1:50,000
Projection: UTM
Zone: 18N



Symbol	Description
(Color swatches)	Water Level
(Color swatches)	Water Depth
(Color swatches)	Water Temperature
(Color swatches)	Water Salinity
(Color swatches)	Water Transparency
(Color swatches)	Water Quality
(Color swatches)	Water Velocity
(Color swatches)	Water Current
(Color swatches)	Water Direction
(Color swatches)	Water Level Change
(Color swatches)	Water Level Error
(Color swatches)	Water Level Uncertainty
(Color swatches)	Water Level Accuracy
(Color swatches)	Water Level Precision
(Color swatches)	Water Level Resolution
(Color swatches)	Water Level Sensitivity
(Color swatches)	Water Level Specificity
(Color swatches)	Water Level Reliability
(Color swatches)	Water Level Validity
(Color swatches)	Water Level Integrity
(Color swatches)	Water Level Availability
(Color swatches)	Water Level Usability
(Color swatches)	Water Level Suitability
(Color swatches)	Water Level Feasibility
(Color swatches)	Water Level Desirability
(Color swatches)	Water Level Attractiveness
(Color swatches)	Water Level Desirability
(Color swatches)	Water Level Feasibility
(Color swatches)	Water Level Suitability
(Color swatches)	Water Level Usability
(Color swatches)	Water Level Availability
(Color swatches)	Water Level Integrity
(Color swatches)	Water Level Validity
(Color swatches)	Water Level Reliability
(Color swatches)	Water Level Specificity
(Color swatches)	Water Level Sensitivity
(Color swatches)	Water Level Accuracy
(Color swatches)	Water Level Precision
(Color swatches)	Water Level Resolution
(Color swatches)	Water Level Sensitivity
(Color swatches)	Water Level Accuracy
(Color swatches)	Water Level Precision
(Color swatches)	Water Level Resolution

Designed by:	Hydro Software v3.6.1	Design Date:	28 Nov 2014
Reviewed by:	1:50,000	Project Reference Number:	PC00010
Reference scale:	1 inch = 250 feet	Survey Type:	Single-beam Bathymetry
Projection:	NAD 1983 StatePlane South Carolina FIPS 3200 Feet		

Charleston Upper Harbor Channel Survey
The information depicted on this map represents the results of surveys made on the dates indicated and can only be used for general information purposes. The information is not to be used for navigation or other purposes without the approval of the District Engineer.
Concluded on: 21 November 2014