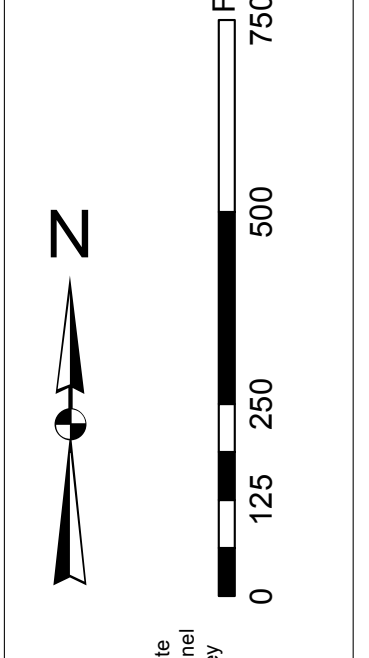
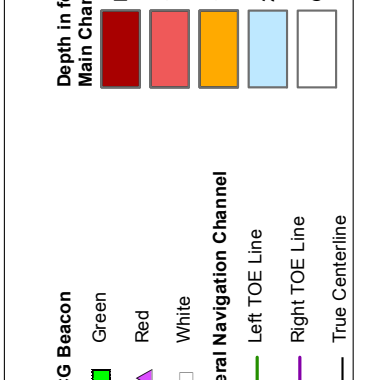


In accordance with the U.S. Army Corps of Engineers, Charleston District Office, Special Operations Section, the information on this map represents the results of surveys made on the dates indicated and can only be considered as indicating the general character of the bottom. It is not intended to be used for navigation. All depths are in feet and mean low water. The datum is Mean Low Water. The chart is not to be used for navigation.

**Projection:** NAD 1983 StatePlane South Carolina FIPS 3200 Feet  
**Scale:** 1 inch = 250 feet  
**Reference:** 1:50,000  
**Survey:** FPO0010  
**Survey Type:** Single-beam Condition



**System Chart Notes:**  
 1. This chart is a hydrographic chart.  
 2. It is not to be used for navigation.  
 3. Soundings are in feet and mean low water.  
 4. The datum is Mean Low Water.

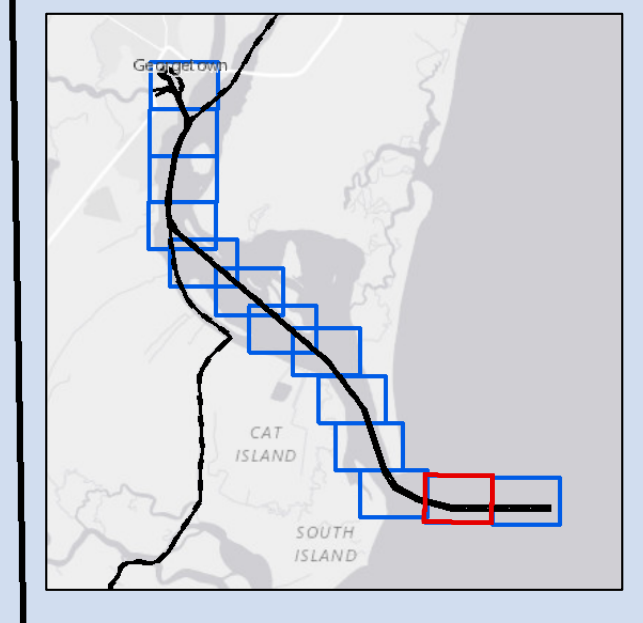
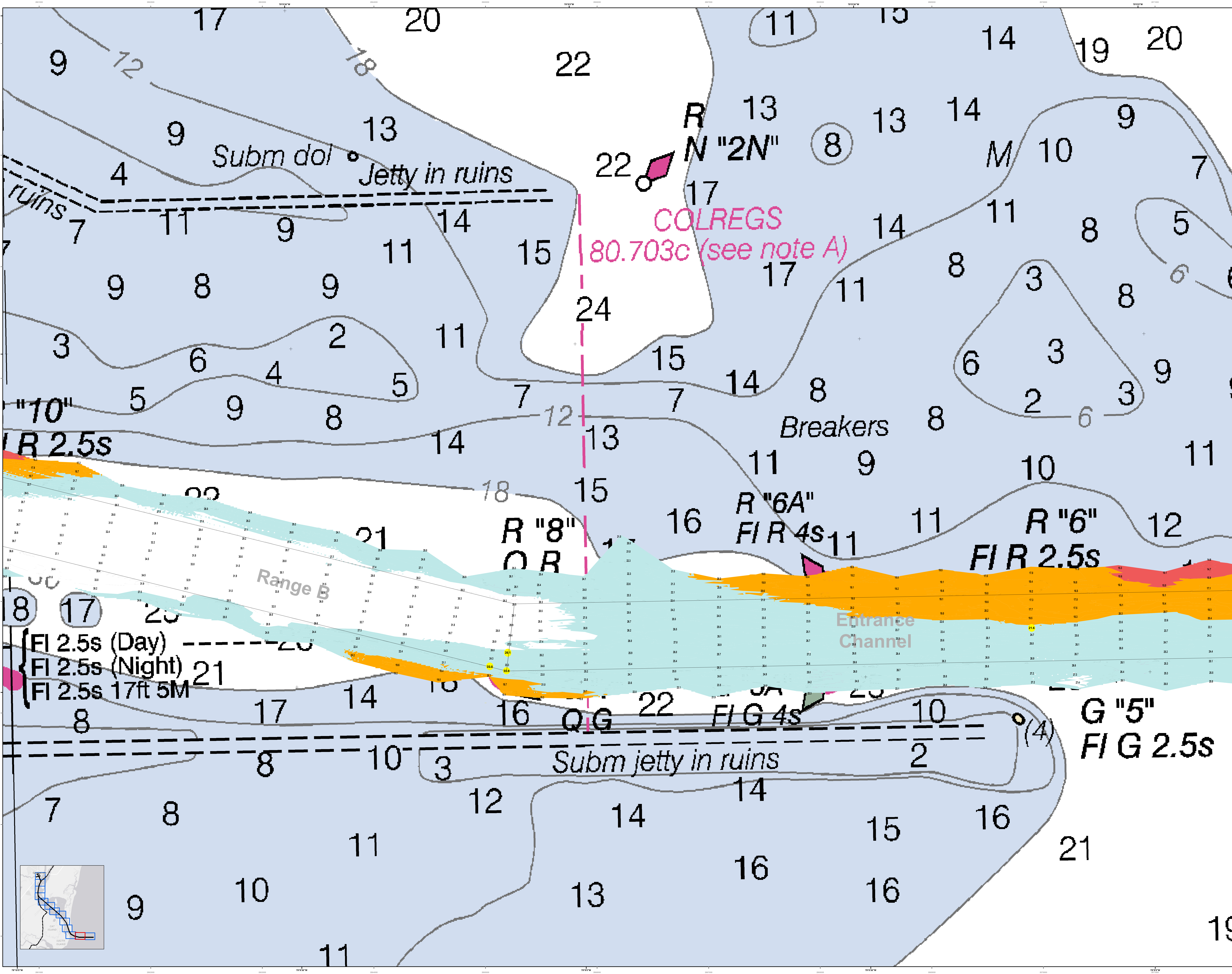


**Legend:**  
 Soundings: 3, 4, 5, 6, 7, 8, 9, 10, 11, 12, 13, 14, 15, 16, 17, 18, 19, 20, 21, 22, 23, 24, 25, 26, 27, 28, 29, 30, 31, 32, 33, 34, 35, 36, 37, 38  
 Depth Contours: 3, 4, 5, 6, 7, 8, 9, 10, 11, 12, 13, 14, 15, 16, 17, 18, 19, 20, 21, 22, 23, 24, 25, 26, 27, 28, 29, 30, 31, 32, 33, 34, 35, 36, 37, 38  
 Navigational Markers: R 4, F L R 4 S BELL, G 5, F I G 2.5 S, S Sh, 351

U.S. Army Corps of Engineers Charleston District Office Savannah Branch 3000 Northpark Drive Charleston, SC 29405 CESAC-GIS@USACE.ARMY.MIL	Designed by: Hydro Software v3.02 Reviewed by: Absolute scale Reference scale: 1 inch = 250 feet Projection: NAD 1983 StatePlane South Carolina FIPS 3200 Feet	Creation Date: 19 Feb 2015 Project Reference Number: FPO0010 Survey Type: Single-beam Condition
---	---	---

**Georgetown Harbor Channel Survey**  
 The information depicted on this map represents the results of surveys made on the dates indicated and can only be considered as indicating the general character of the bottom. It is not intended to be used for navigation. All depths are in feet and mean low water. The datum is Mean Low Water.  
 Concluded on: 29 January 2015  
 Georgetown, South Carolina





**U.S. Army Corps of Engineers**  
Charleston District

**Georgetown Harbor Channel Survey**  
The information depicted on this map represents the results of surveys made on the dates indicated and can only be considered as indicating the general location of obstructions. It does not constitute a guarantee of accuracy, and the user is advised to exercise caution when navigating through the area. This information is intended for use as a general guide only. All other uses are discouraged.

**Georgetown, South Carolina**  
Concluded on: **29 January 2015**

**Legend**

Symbol/Color	Description
Red circle with number	Red Buoy
Green circle with number	Green Buoy
Magenta circle with number	Magenta Buoy
White circle with number	White Buoy
Black triangle	Lighted Beacon
Black square	Lighted Buoy
Black circle	Lighted Buoy
Black diamond	Lighted Buoy
Black cross	Lighted Buoy
Black star	Lighted Buoy
Black circle with cross	Lighted Buoy
Black circle with star	Lighted Buoy
Black circle with cross and star	Lighted Buoy
Black circle with cross and star and number	Lighted Buoy
Black circle with cross and star and number and letter	Lighted Buoy
Black circle with cross and star and number and letter and number	Lighted Buoy
Black circle with cross and star and number and letter and number and letter	Lighted Buoy
Black circle with cross and star and number and letter and number and letter and number and letter and number	Lighted Buoy
Black circle with cross and star and number and letter and number and letter and number and letter and number and letter and number and letter and number	Lighted Buoy

**Scale:** 1 inch = 250 feet

**Projection:** NAD 1983 StatePlane South Carolina FIPS 3200 Feet

**Metadata:**  
 Designed by: [Name]  
 Reviewed by: [Name]  
 Reference scale: 1:5000  
 Survey type: Single-beam Condition  
 Projection: NAD 1983 StatePlane South Carolina FIPS 3200 Feet

**Creation Date:** 19 Feb 2015  
**Design Date:** 19 Feb 2015  
**Project Reference Number:** [Number]  
**Survey Type:** [Type]

**SHEET REFERENCE NUMBER**  
C001

**SHEET 2 OF 13**

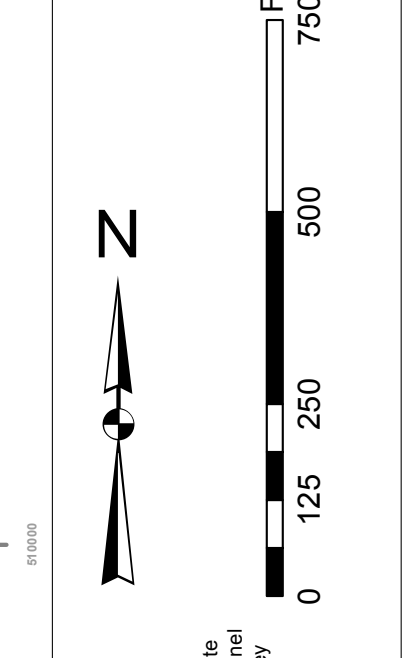






In the event that the U.S. Army Corps of Engineers, Charleston District Office, Special Districts be made to project, construct, install, maintain, or remove any structure, the project engineer shall be responsible for obtaining all necessary permits and approvals from the appropriate agencies. This information is provided for informational purposes only and does not constitute an offer of insurance or any other financial product. There are no guarantees or warranties made by the Corps of Engineers. This information is provided for informational purposes only and does not constitute an offer of insurance or any other financial product. This information is provided for informational purposes only and does not constitute an offer of insurance or any other financial product. This information is provided for informational purposes only and does not constitute an offer of insurance or any other financial product.

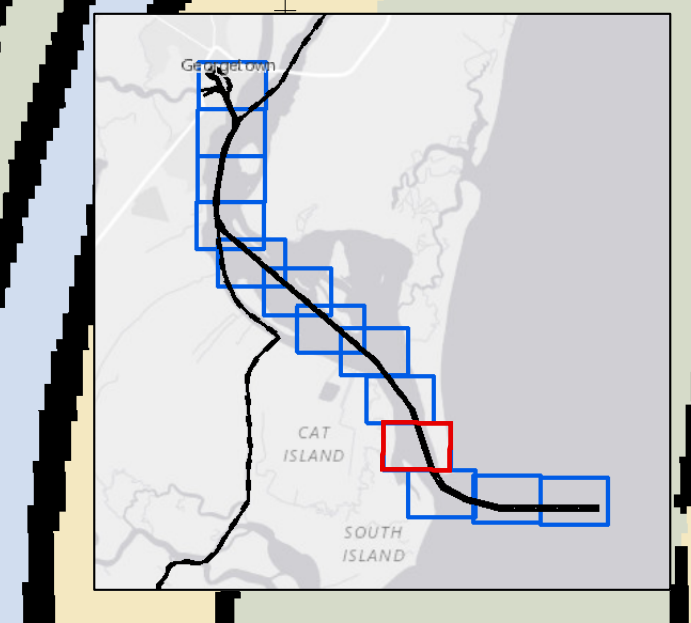
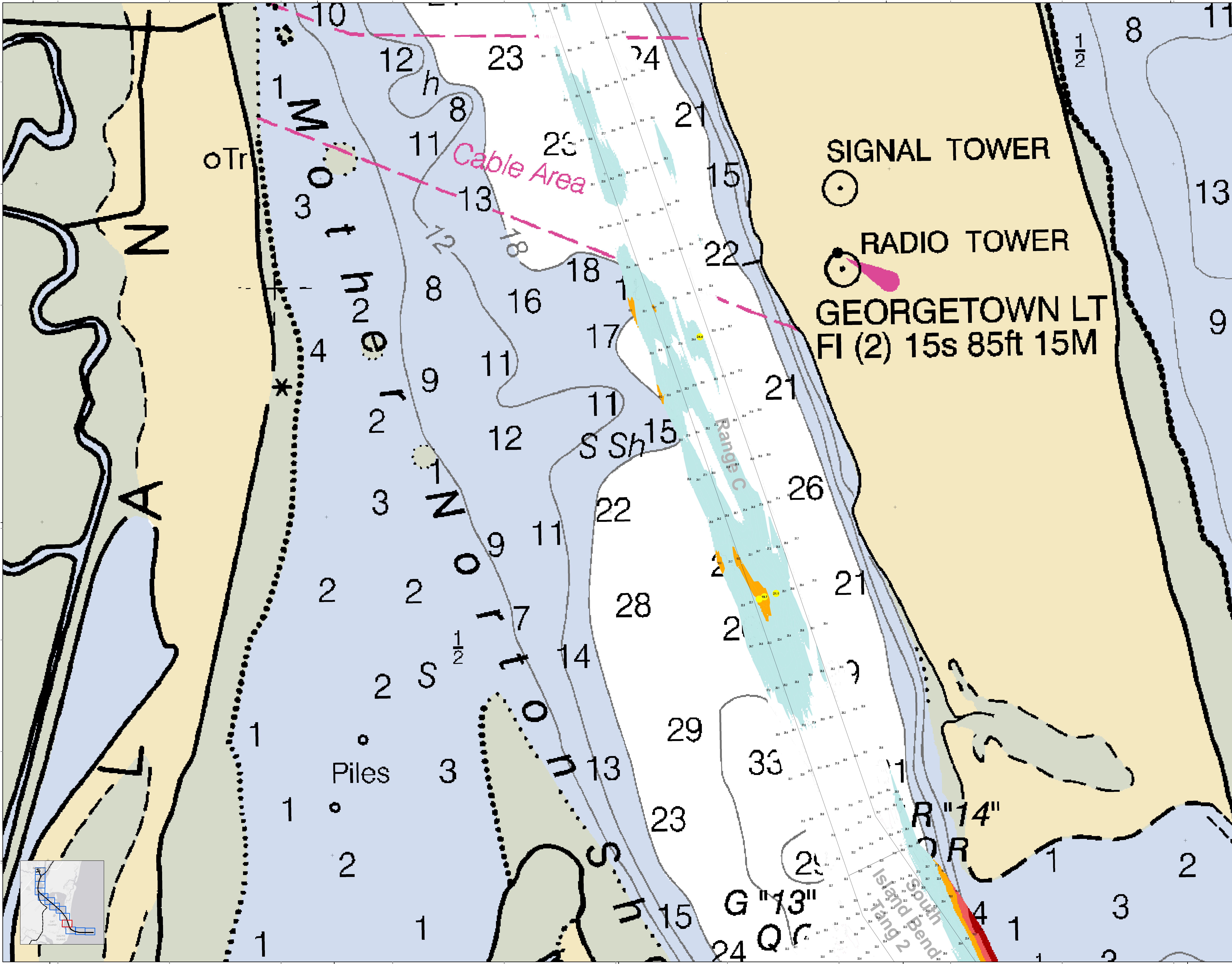
**Legend**  
Symbol: Signal Tower (circle with dot), Radio Tower (circle with triangle), Obstruction (circle with cross), etc.  
Color: Depth contours (light blue to dark blue), Sand (yellow), etc.



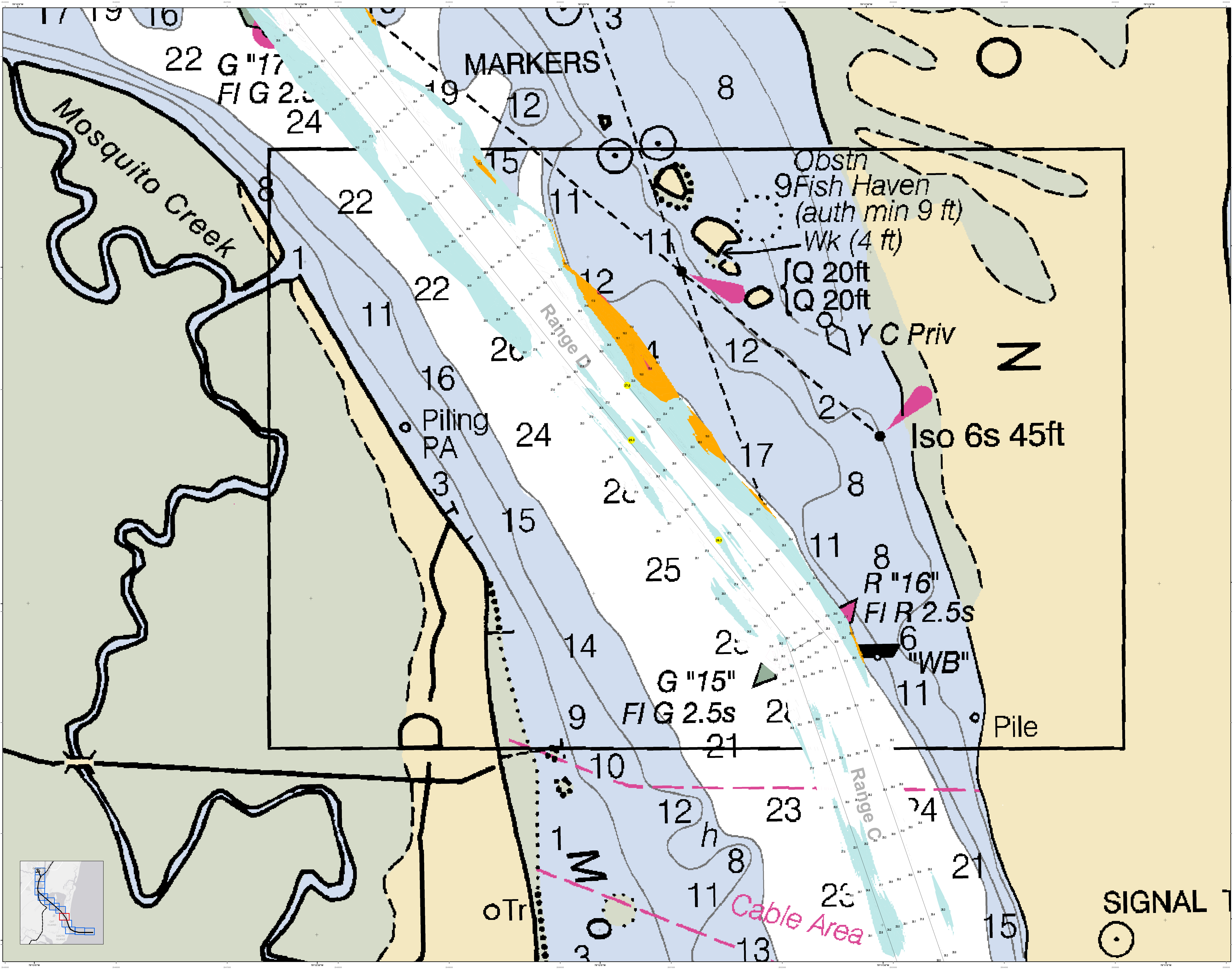
<b>Legend</b>	<b>Symbol</b>	<b>Meaning</b>
Circle with dot	Signal Tower	
Circle with triangle	Radio Tower	
Circle with cross	Obstruction	
Circle with star	Light	
Circle with square	Structure	
Circle with triangle	Structure	
Circle with square	Structure	
Circle with triangle	Structure	

<b>Designed by:</b> J. E. Smith, J. E. Smith, J. E. Smith	<b>Design Date:</b> 19 Feb 2015	<b>Creation Date:</b> 19 Feb 2015
<b>Reviewed by:</b> J. E. Smith, J. E. Smith, J. E. Smith	<b>Project Reference Number:</b> 15000	<b>Project Reference Number:</b> 15000
<b>Scale:</b> 1 inch = 250 feet	<b>Survey Type:</b> Single-beam	<b>Survey Type:</b> Single-beam
<b>Projection:</b> NAD 1983 StatePlane South Carolina FIPS 3600 Feet	<b>Projection:</b> NAD 1983 StatePlane South Carolina FIPS 3600 Feet	<b>Projection:</b> NAD 1983 StatePlane South Carolina FIPS 3600 Feet

**Georgetown Harbor Channel Survey**  
The information depicted on this map represents the results of surveys made on the dates indicated and can only be considered as indicating the general location of obstructions. It is not intended to be used for navigation. Concluded on: 29 January 2015  
Georgetown, South Carolina

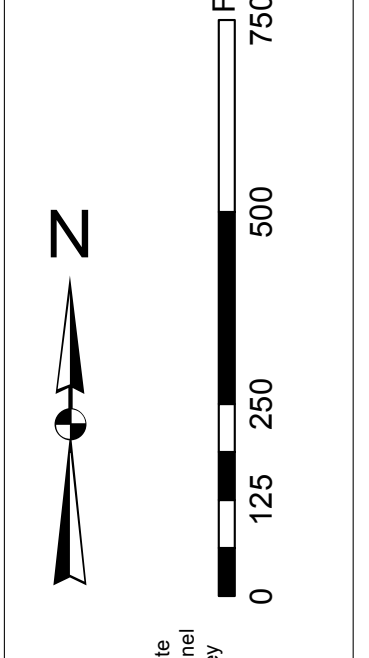






In the event that the U.S. Army Corps of Engineers, Charleston District Office, should be made to project, construct, maintain, or operate any project, the information contained herein is for informational purposes only and does not constitute a contract. The Corps of Engineers is not responsible for the accuracy or completeness of the information contained herein. The user of this information is advised to verify the accuracy and completeness of the information before using it for any purpose.

**Projections:**  
1. North Carolina State Plane  
2. NAD 83  
3. State Plane  
4. UTM  
5. UTM  
6. UTM  
7. UTM  
8. UTM  
9. UTM  
10. UTM  
11. UTM  
12. UTM  
13. UTM  
14. UTM  
15. UTM  
16. UTM  
17. UTM  
18. UTM  
19. UTM  
20. UTM  
21. UTM  
22. UTM  
23. UTM  
24. UTM  
25. UTM



**Legend:**  
1. Obstruction  
2. Obstruction  
3. Obstruction  
4. Obstruction  
5. Obstruction  
6. Obstruction  
7. Obstruction  
8. Obstruction  
9. Obstruction  
10. Obstruction  
11. Obstruction  
12. Obstruction  
13. Obstruction  
14. Obstruction  
15. Obstruction  
16. Obstruction  
17. Obstruction  
18. Obstruction  
19. Obstruction  
20. Obstruction  
21. Obstruction  
22. Obstruction  
23. Obstruction  
24. Obstruction  
25. Obstruction

**Legend:**  
1. Obstruction  
2. Obstruction  
3. Obstruction  
4. Obstruction  
5. Obstruction  
6. Obstruction  
7. Obstruction  
8. Obstruction  
9. Obstruction  
10. Obstruction  
11. Obstruction  
12. Obstruction  
13. Obstruction  
14. Obstruction  
15. Obstruction  
16. Obstruction  
17. Obstruction  
18. Obstruction  
19. Obstruction  
20. Obstruction  
21. Obstruction  
22. Obstruction  
23. Obstruction  
24. Obstruction  
25. Obstruction

**Legend:**  
1. Obstruction  
2. Obstruction  
3. Obstruction  
4. Obstruction  
5. Obstruction  
6. Obstruction  
7. Obstruction  
8. Obstruction  
9. Obstruction  
10. Obstruction  
11. Obstruction  
12. Obstruction  
13. Obstruction  
14. Obstruction  
15. Obstruction  
16. Obstruction  
17. Obstruction  
18. Obstruction  
19. Obstruction  
20. Obstruction  
21. Obstruction  
22. Obstruction  
23. Obstruction  
24. Obstruction  
25. Obstruction

**Legend:**  
1. Obstruction  
2. Obstruction  
3. Obstruction  
4. Obstruction  
5. Obstruction  
6. Obstruction  
7. Obstruction  
8. Obstruction  
9. Obstruction  
10. Obstruction  
11. Obstruction  
12. Obstruction  
13. Obstruction  
14. Obstruction  
15. Obstruction  
16. Obstruction  
17. Obstruction  
18. Obstruction  
19. Obstruction  
20. Obstruction  
21. Obstruction  
22. Obstruction  
23. Obstruction  
24. Obstruction  
25. Obstruction

**Legend:**  
1. Obstruction  
2. Obstruction  
3. Obstruction  
4. Obstruction  
5. Obstruction  
6. Obstruction  
7. Obstruction  
8. Obstruction  
9. Obstruction  
10. Obstruction  
11. Obstruction  
12. Obstruction  
13. Obstruction  
14. Obstruction  
15. Obstruction  
16. Obstruction  
17. Obstruction  
18. Obstruction  
19. Obstruction  
20. Obstruction  
21. Obstruction  
22. Obstruction  
23. Obstruction  
24. Obstruction  
25. Obstruction

**Legend:**  
1. Obstruction  
2. Obstruction  
3. Obstruction  
4. Obstruction  
5. Obstruction  
6. Obstruction  
7. Obstruction  
8. Obstruction  
9. Obstruction  
10. Obstruction  
11. Obstruction  
12. Obstruction  
13. Obstruction  
14. Obstruction  
15. Obstruction  
16. Obstruction  
17. Obstruction  
18. Obstruction  
19. Obstruction  
20. Obstruction  
21. Obstruction  
22. Obstruction  
23. Obstruction  
24. Obstruction  
25. Obstruction

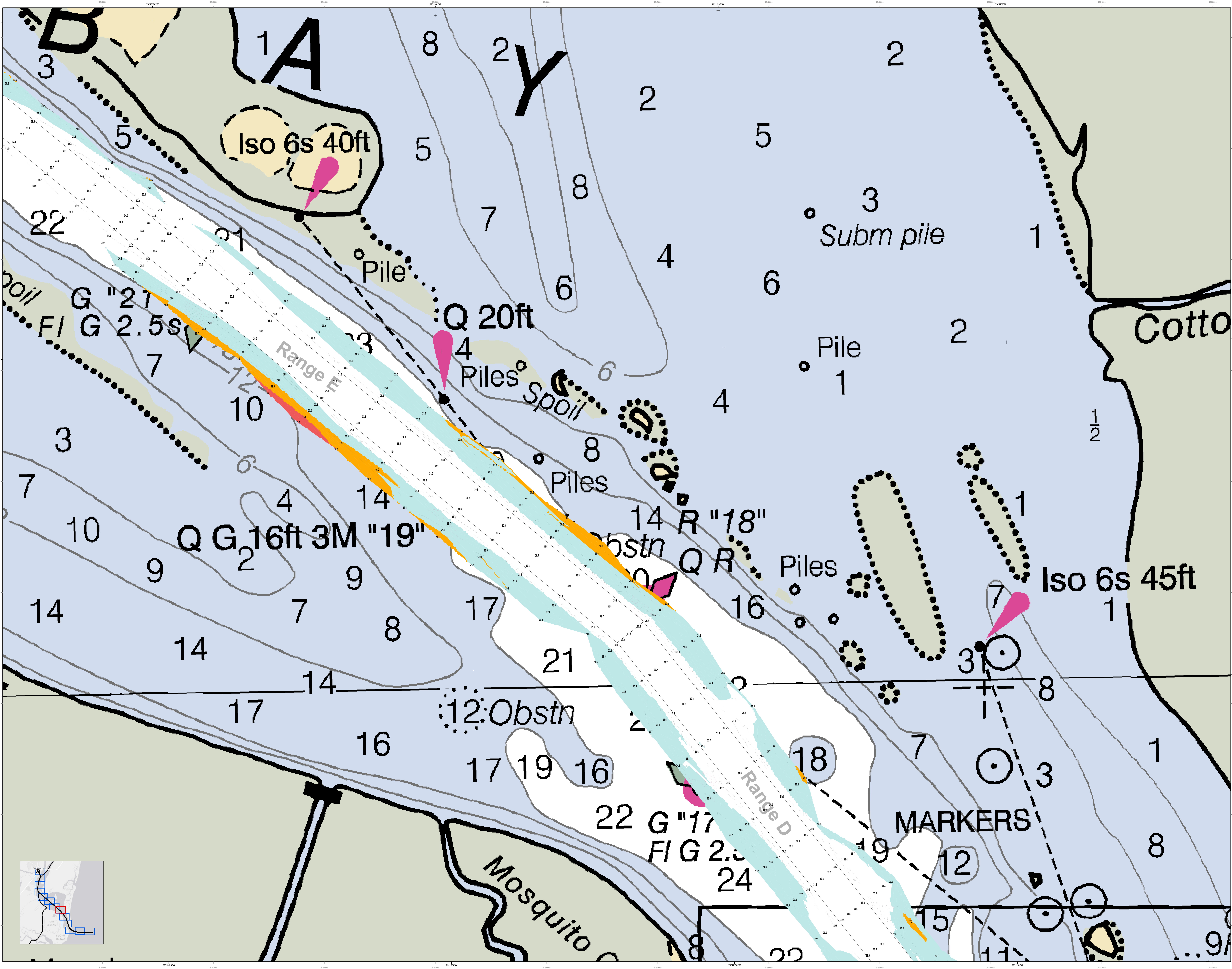
**Legend:**  
1. Obstruction  
2. Obstruction  
3. Obstruction  
4. Obstruction  
5. Obstruction  
6. Obstruction  
7. Obstruction  
8. Obstruction  
9. Obstruction  
10. Obstruction  
11. Obstruction  
12. Obstruction  
13. Obstruction  
14. Obstruction  
15. Obstruction  
16. Obstruction  
17. Obstruction  
18. Obstruction  
19. Obstruction  
20. Obstruction  
21. Obstruction  
22. Obstruction  
23. Obstruction  
24. Obstruction  
25. Obstruction

**Legend:**  
1. Obstruction  
2. Obstruction  
3. Obstruction  
4. Obstruction  
5. Obstruction  
6. Obstruction  
7. Obstruction  
8. Obstruction  
9. Obstruction  
10. Obstruction  
11. Obstruction  
12. Obstruction  
13. Obstruction  
14. Obstruction  
15. Obstruction  
16. Obstruction  
17. Obstruction  
18. Obstruction  
19. Obstruction  
20. Obstruction  
21. Obstruction  
22. Obstruction  
23. Obstruction  
24. Obstruction  
25. Obstruction

**Legend:**  
1. Obstruction  
2. Obstruction  
3. Obstruction  
4. Obstruction  
5. Obstruction  
6. Obstruction  
7. Obstruction  
8. Obstruction  
9. Obstruction  
10. Obstruction  
11. Obstruction  
12. Obstruction  
13. Obstruction  
14. Obstruction  
15. Obstruction  
16. Obstruction  
17. Obstruction  
18. Obstruction  
19. Obstruction  
20. Obstruction  
21. Obstruction  
22. Obstruction  
23. Obstruction  
24. Obstruction  
25. Obstruction

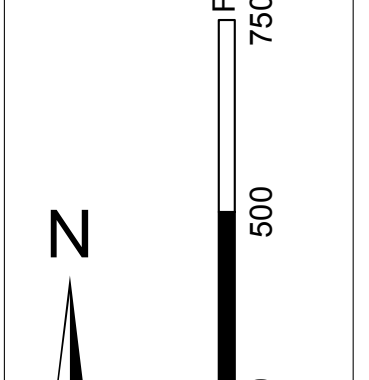
**Legend:**  
1. Obstruction  
2. Obstruction  
3. Obstruction  
4. Obstruction  
5. Obstruction  
6. Obstruction  
7. Obstruction  
8. Obstruction  
9. Obstruction  
10. Obstruction  
11. Obstruction  
12. Obstruction  
13. Obstruction  
14. Obstruction  
15. Obstruction  
16. Obstruction  
17. Obstruction  
18. Obstruction  
19. Obstruction  
20. Obstruction  
21. Obstruction  
22. Obstruction  
23. Obstruction  
24. Obstruction  
25. Obstruction





In the event that the U.S. Army Corps of Engineers, Charleston District Office, Special District Office, or District Office is notified of any change in the status of the project, the District Office will be responsible for updating the chart. The District Office will be responsible for updating the chart. The District Office will be responsible for updating the chart.

**Projections:**  
1. North Carolina State Plane  
2. NAD 83  
3. StatePlane South Carolina FIPS 3200 Feet  
4. UTM  
5. UTM  
6. UTM



**Legend:**  
1. Obstruction  
2. Obstruction  
3. Obstruction  
4. Obstruction  
5. Obstruction  
6. Obstruction  
7. Obstruction  
8. Obstruction  
9. Obstruction  
10. Obstruction  
11. Obstruction  
12. Obstruction  
13. Obstruction  
14. Obstruction  
15. Obstruction  
16. Obstruction  
17. Obstruction  
18. Obstruction  
19. Obstruction  
20. Obstruction  
21. Obstruction  
22. Obstruction  
23. Obstruction  
24. Obstruction

**Legend:**  
1. Obstruction  
2. Obstruction  
3. Obstruction  
4. Obstruction  
5. Obstruction  
6. Obstruction  
7. Obstruction  
8. Obstruction  
9. Obstruction  
10. Obstruction  
11. Obstruction  
12. Obstruction  
13. Obstruction  
14. Obstruction  
15. Obstruction  
16. Obstruction  
17. Obstruction  
18. Obstruction  
19. Obstruction  
20. Obstruction  
21. Obstruction  
22. Obstruction  
23. Obstruction  
24. Obstruction

**Legend:**  
1. Obstruction  
2. Obstruction  
3. Obstruction  
4. Obstruction  
5. Obstruction  
6. Obstruction  
7. Obstruction  
8. Obstruction  
9. Obstruction  
10. Obstruction  
11. Obstruction  
12. Obstruction  
13. Obstruction  
14. Obstruction  
15. Obstruction  
16. Obstruction  
17. Obstruction  
18. Obstruction  
19. Obstruction  
20. Obstruction  
21. Obstruction  
22. Obstruction  
23. Obstruction  
24. Obstruction

**Legend:**  
1. Obstruction  
2. Obstruction  
3. Obstruction  
4. Obstruction  
5. Obstruction  
6. Obstruction  
7. Obstruction  
8. Obstruction  
9. Obstruction  
10. Obstruction  
11. Obstruction  
12. Obstruction  
13. Obstruction  
14. Obstruction  
15. Obstruction  
16. Obstruction  
17. Obstruction  
18. Obstruction  
19. Obstruction  
20. Obstruction  
21. Obstruction  
22. Obstruction  
23. Obstruction  
24. Obstruction

**Legend:**  
1. Obstruction  
2. Obstruction  
3. Obstruction  
4. Obstruction  
5. Obstruction  
6. Obstruction  
7. Obstruction  
8. Obstruction  
9. Obstruction  
10. Obstruction  
11. Obstruction  
12. Obstruction  
13. Obstruction  
14. Obstruction  
15. Obstruction  
16. Obstruction  
17. Obstruction  
18. Obstruction  
19. Obstruction  
20. Obstruction  
21. Obstruction  
22. Obstruction  
23. Obstruction  
24. Obstruction

**Legend:**  
1. Obstruction  
2. Obstruction  
3. Obstruction  
4. Obstruction  
5. Obstruction  
6. Obstruction  
7. Obstruction  
8. Obstruction  
9. Obstruction  
10. Obstruction  
11. Obstruction  
12. Obstruction  
13. Obstruction  
14. Obstruction  
15. Obstruction  
16. Obstruction  
17. Obstruction  
18. Obstruction  
19. Obstruction  
20. Obstruction  
21. Obstruction  
22. Obstruction  
23. Obstruction  
24. Obstruction

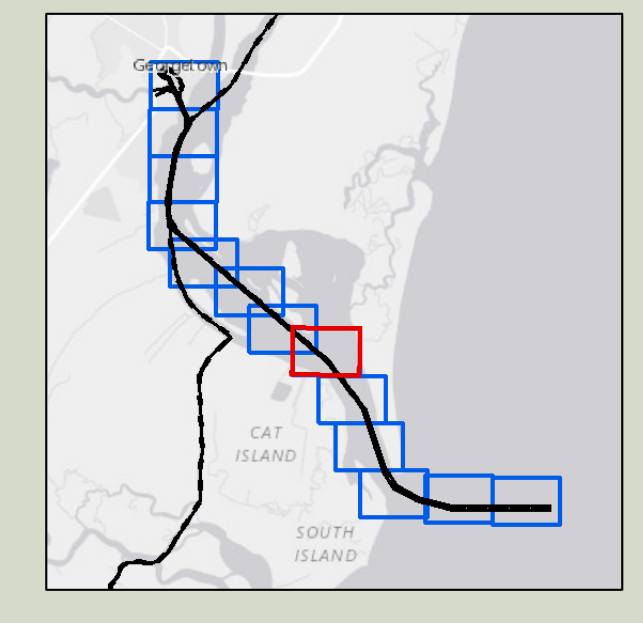
**Legend:**  
1. Obstruction  
2. Obstruction  
3. Obstruction  
4. Obstruction  
5. Obstruction  
6. Obstruction  
7. Obstruction  
8. Obstruction  
9. Obstruction  
10. Obstruction  
11. Obstruction  
12. Obstruction  
13. Obstruction  
14. Obstruction  
15. Obstruction  
16. Obstruction  
17. Obstruction  
18. Obstruction  
19. Obstruction  
20. Obstruction  
21. Obstruction  
22. Obstruction  
23. Obstruction  
24. Obstruction

**Legend:**  
1. Obstruction  
2. Obstruction  
3. Obstruction  
4. Obstruction  
5. Obstruction  
6. Obstruction  
7. Obstruction  
8. Obstruction  
9. Obstruction  
10. Obstruction  
11. Obstruction  
12. Obstruction  
13. Obstruction  
14. Obstruction  
15. Obstruction  
16. Obstruction  
17. Obstruction  
18. Obstruction  
19. Obstruction  
20. Obstruction  
21. Obstruction  
22. Obstruction  
23. Obstruction  
24. Obstruction

**Legend:**  
1. Obstruction  
2. Obstruction  
3. Obstruction  
4. Obstruction  
5. Obstruction  
6. Obstruction  
7. Obstruction  
8. Obstruction  
9. Obstruction  
10. Obstruction  
11. Obstruction  
12. Obstruction  
13. Obstruction  
14. Obstruction  
15. Obstruction  
16. Obstruction  
17. Obstruction  
18. Obstruction  
19. Obstruction  
20. Obstruction  
21. Obstruction  
22. Obstruction  
23. Obstruction  
24. Obstruction

**Legend:**  
1. Obstruction  
2. Obstruction  
3. Obstruction  
4. Obstruction  
5. Obstruction  
6. Obstruction  
7. Obstruction  
8. Obstruction  
9. Obstruction  
10. Obstruction  
11. Obstruction  
12. Obstruction  
13. Obstruction  
14. Obstruction  
15. Obstruction  
16. Obstruction  
17. Obstruction  
18. Obstruction  
19. Obstruction  
20. Obstruction  
21. Obstruction  
22. Obstruction  
23. Obstruction  
24. Obstruction

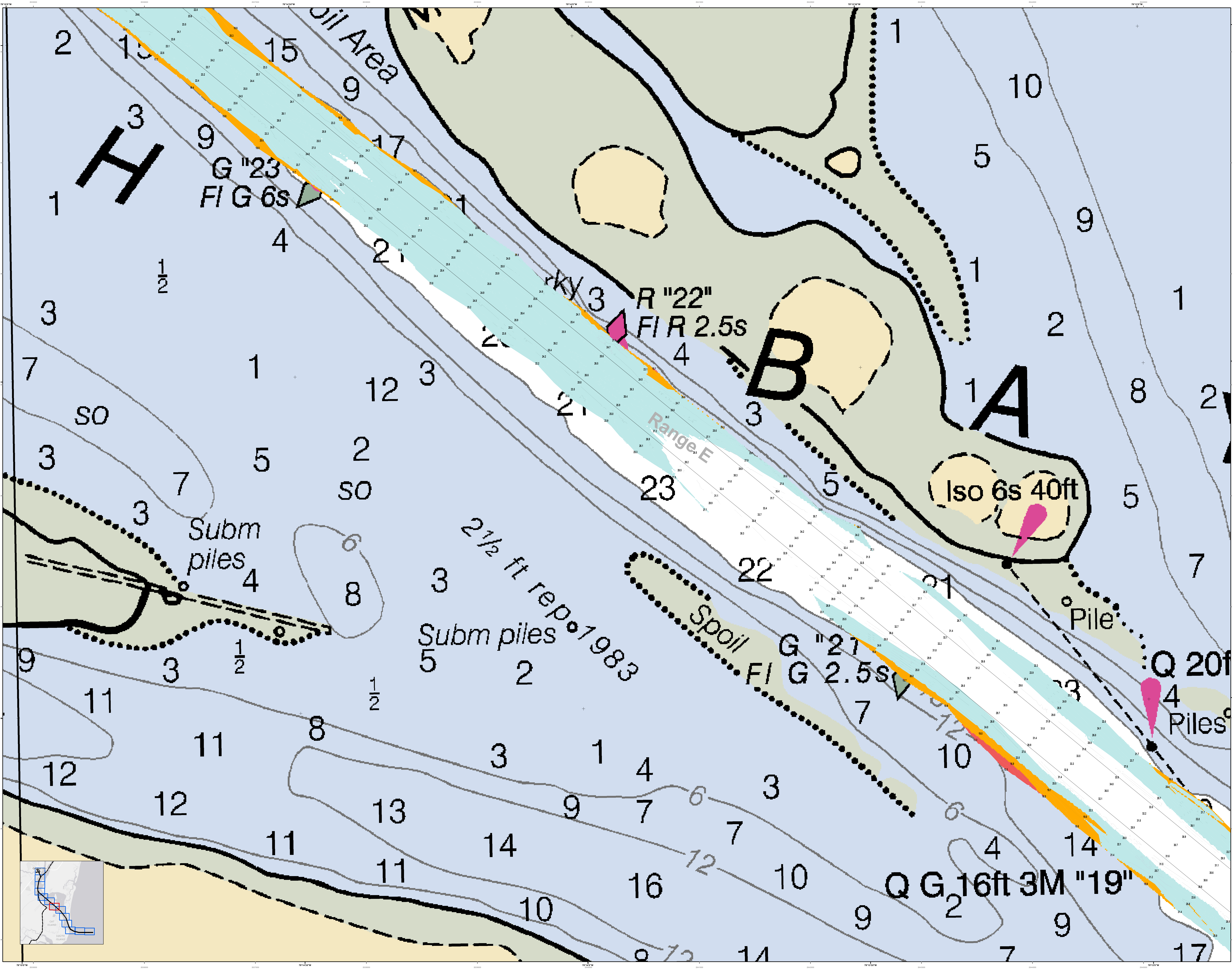
**Legend:**  
1. Obstruction  
2. Obstruction  
3. Obstruction  
4. Obstruction  
5. Obstruction  
6. Obstruction  
7. Obstruction  
8. Obstruction  
9. Obstruction  
10. Obstruction  
11. Obstruction  
12. Obstruction  
13. Obstruction  
14. Obstruction  
15. Obstruction  
16. Obstruction  
17. Obstruction  
18. Obstruction  
19. Obstruction  
20. Obstruction  
21. Obstruction  
22. Obstruction  
23. Obstruction  
24. Obstruction



**Georgetown Harbor Channel Survey**  
The information depicted on this map represents the results of surveys made on the dates indicated and can only be considered as indicating the general location of the surveying activity.

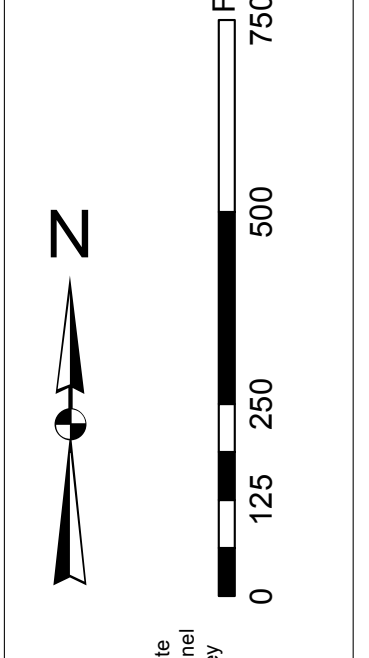
Concluded on: **29 January 2015**  
Georgetown, South Carolina





In the event that the U.S. Army Corps of Engineers, Charleston District Office, Special Data Branch is made to project, construct, install, maintain, or operate any navigational aid, the information on this chart is provided for informational purposes only. It is not intended to be used for navigation. There are no warranties, expressed or implied, made by the U.S. Army Corps of Engineers, Charleston District Office, Special Data Branch, for the accuracy, completeness, or timeliness of the information on this chart. The user is encouraged to use all modern safety measures.

**Projections:**  
1. North Carolina State Plane  
2. NAD 83  
3. State Plane  
4. UTM  
5. UTM  
6. UTM  
7. UTM  
8. UTM  
9. UTM  
10. UTM  
11. UTM  
12. UTM  
13. UTM  
14. UTM  
15. UTM  
16. UTM  
17. UTM



**System Chart Notes:**  
1. This chart is a hydrographic chart.  
2. This chart is a hydrographic chart.  
3. This chart is a hydrographic chart.  
4. This chart is a hydrographic chart.  
5. This chart is a hydrographic chart.  
6. This chart is a hydrographic chart.  
7. This chart is a hydrographic chart.  
8. This chart is a hydrographic chart.  
9. This chart is a hydrographic chart.  
10. This chart is a hydrographic chart.  
11. This chart is a hydrographic chart.  
12. This chart is a hydrographic chart.  
13. This chart is a hydrographic chart.  
14. This chart is a hydrographic chart.  
15. This chart is a hydrographic chart.  
16. This chart is a hydrographic chart.  
17. This chart is a hydrographic chart.

**Legend:**  
1. Obstruction  
2. Obstruction  
3. Obstruction  
4. Obstruction  
5. Obstruction  
6. Obstruction  
7. Obstruction  
8. Obstruction  
9. Obstruction  
10. Obstruction  
11. Obstruction  
12. Obstruction  
13. Obstruction  
14. Obstruction  
15. Obstruction  
16. Obstruction  
17. Obstruction

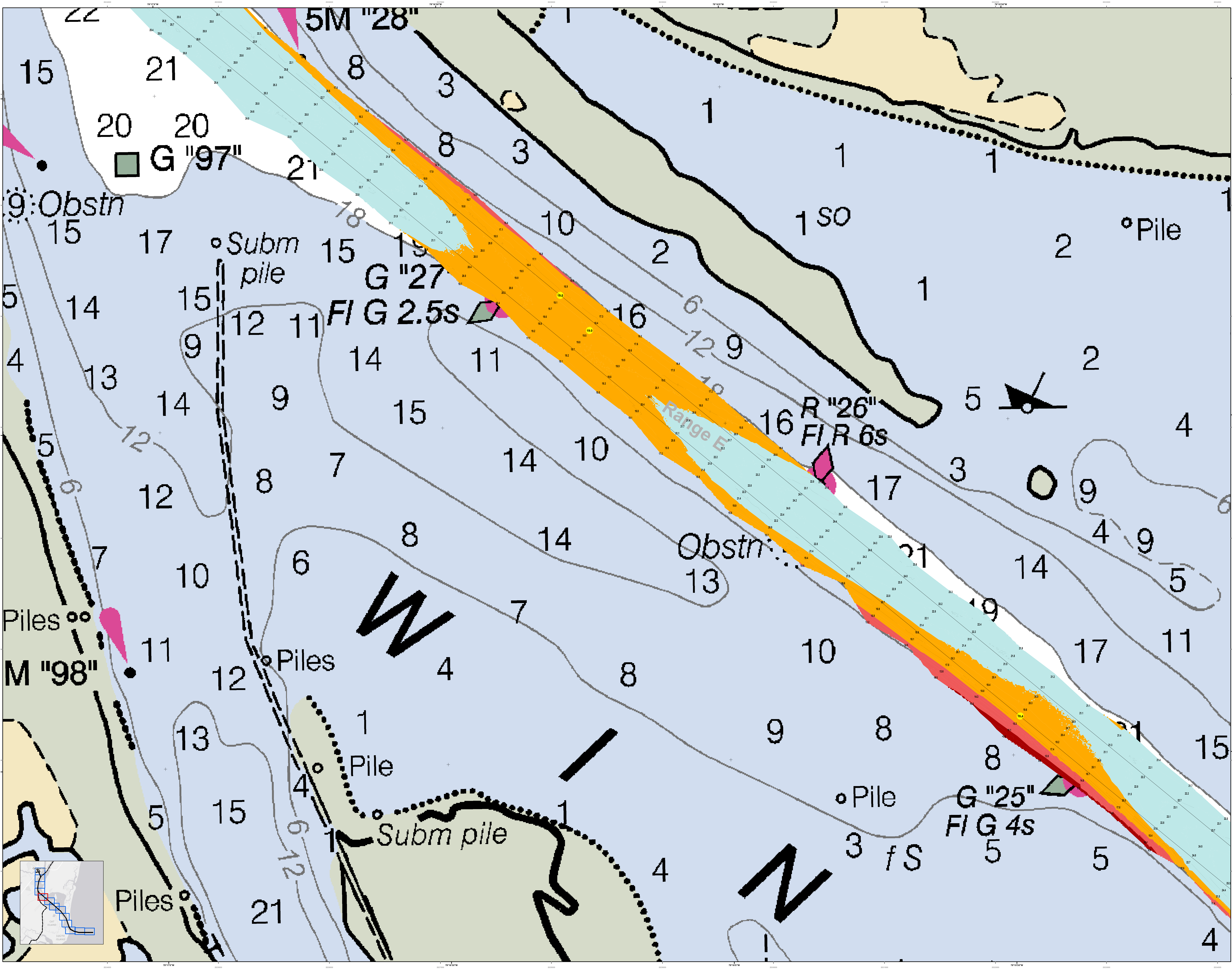
Designed by:	Hydro Software v3.82	Creation Date:	19 Feb 2015
Reviewed by:	1:5000	Project Reference Number:	19020013
Reference scale:	1 inch = 250 feet	Survey type:	Single-beam Condition
Projection:	NAD 1983 StatePlane South Carolina FIPS 3200 Feet		

**Georgetown Harbor Channel Survey**  
The information depicted on this map represents the results of surveys made on the dates indicated and can only be considered as indicating the general character of the bottom. It is not intended to be used for navigation.  
Concluded on: 29 January 2015  
Georgetown, South Carolina









**U.S. Army Corps of Engineers**  
Charleston District

**Georgetown Harbor Channel Survey**  
The information depicted on this map represents the results of surveys made on the dates indicated and can only be considered as indicating the general character of the bottom and not as a guarantee of depth. It is not to be used for navigation purposes.  
Concluded on: **29 January 2015**  
Georgetown, South Carolina

**Legend**

- Soundings:** 1-25, 26-30, 31-35, 36-40, 41-45, 46-50, 51-55, 56-60, 61-65, 66-70, 71-75, 76-80, 81-85, 86-90, 91-95, 96-100
- Obstructions:** Obstrn (with number), Obstrn (with symbol)
- Submerged Piles:** Subm pile (with symbol)
- Range E:** Range E (with symbol)
- Obstruction:** Obstrn (with symbol)
- Other:** Piles, M "98", G "97", G "27", R "26", G "25", FI G 2.5s, FI R 6s, FI G 4s, fS

**Scale:** 1 inch = 250 feet

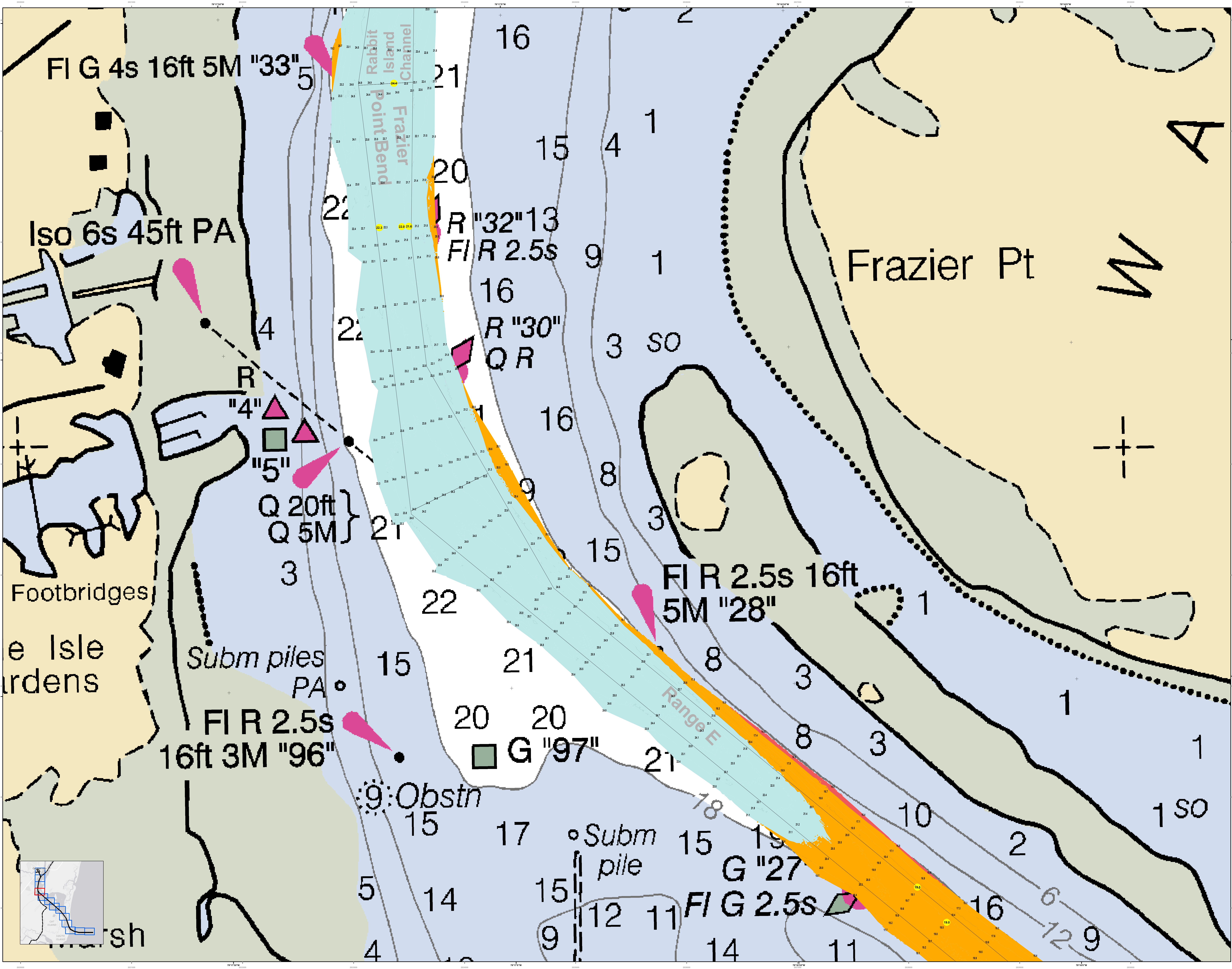
**North Arrow:** N

**Projection:** NAD 1983 StatePlane South Carolina FIPS 3200 Feet

<b>Designed by:</b> U.S. Army Corps of Engineers, Charleston District, Savannah District, Charleston District	<b>Design Date:</b> 19 Feb 2015	<b>Creation Date:</b> 19 Feb 2015
<b>Reviewed by:</b> U.S. Army Corps of Engineers, Charleston District, Savannah District, Charleston District	<b>Project Reference Number:</b> 13000	<b>Project Reference Number:</b> 13000
<b>Reference scale:</b> 1 inch = 250 feet	<b>Survey Type:</b> Single-beam Condition	<b>Survey Type:</b> Single-beam Condition

**SHEET REFERENCE NUMBER:** C001  
**SHEET 9 OF 13**





U.S. Army Corps of Engineers  
Charleston District

**Georgetown Harbor Channel Survey**  
 The information depicted on this map represents the results of surveys made on the dates indicated and can only be considered as indicating the general location of objects and structures in the waterway.  
 Concluded on: **29 January 2015**  
 Georgetown, South Carolina

Designed by: U.S. Army Corps of Engineers, District Office, Charleston, SC  
 Created by: U.S. Army Corps of Engineers, District Office, Charleston, SC  
 Project Reference Number: 15000  
 Survey Type: Single-beam Condition  
 Reference Scale: 1 inch = 250 feet  
 Projection: NAD 1983 StatePlane South Carolina FIPS 3200 Feet

Creation Date: 19 Feb 2015  
 Design Date: 19 Feb 2015

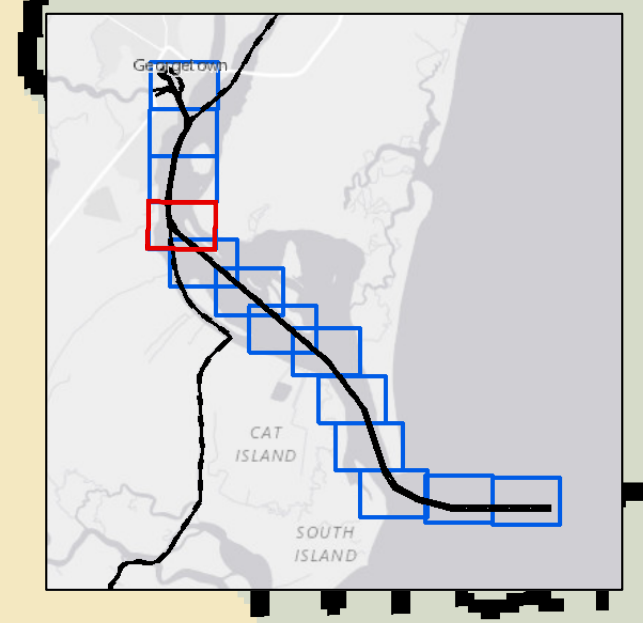
**Legend**

- Soundings: 1, 2, 3, 4, 5, 6, 7, 8, 9, 10, 11, 12, 13, 14, 15, 16, 17, 18, 19, 20, 21, 22
- Obstructions: Obstruction
- Submerged Piles: Subm pile
- Range: Range E
- Other: Iso 6s 45ft PA, FI G 4s 16ft 5M "33", R "4", "5", Q 20ft, Q 5M, FI R 2.5s 16ft 5M "28", G "97", FI G 2.5s

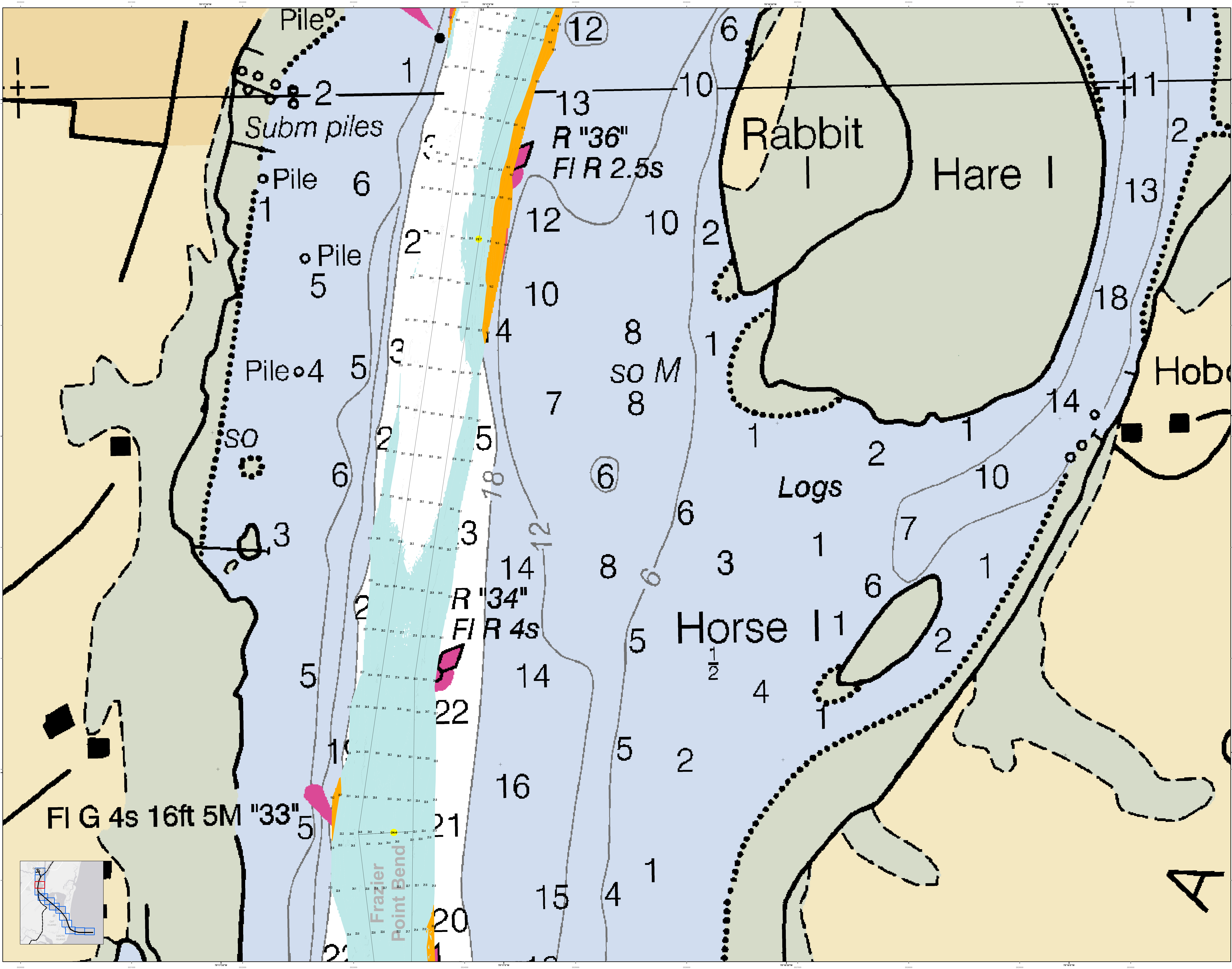
**Scale**  
 0 125 250 500 750 Feet

**North Arrow**

**Disclaimer**  
 This map was prepared by the U.S. Army Corps of Engineers, District Office, Charleston, SC, for the purpose of providing information on the location of objects and structures in the waterway. It is not intended to be used for navigation. The user is responsible for determining the accuracy and reliability of the information on this map. The Corps of Engineers does not warrant the accuracy or reliability of the information on this map. The Corps of Engineers is not liable for any damages or losses resulting from the use of this map.

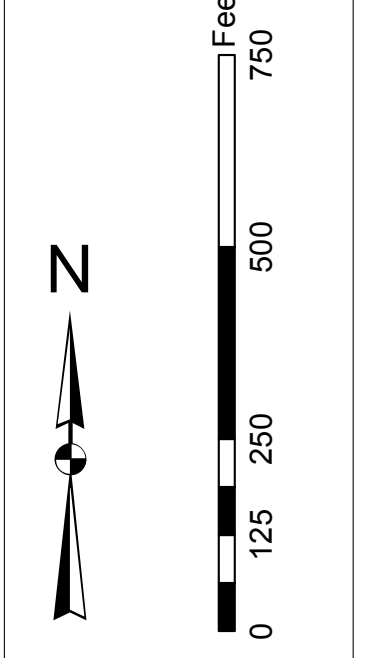






In accordance with the U.S. Army Corps of Engineers, Charleston District Office, Special Operations Manual, Section 3.1.1, this chart is intended for use as a navigational aid. It is not intended to be used as a substitute for a nautical chart. The information on this chart is derived from the following sources:  
1. Hydrographic Survey of 1915  
2. Hydrographic Survey of 1925  
3. Hydrographic Survey of 1935  
4. Hydrographic Survey of 1945  
5. Hydrographic Survey of 1955  
6. Hydrographic Survey of 1965  
7. Hydrographic Survey of 1975  
8. Hydrographic Survey of 1985  
9. Hydrographic Survey of 1995  
10. Hydrographic Survey of 2005  
11. Hydrographic Survey of 2015  
12. Hydrographic Survey of 2016  
13. Hydrographic Survey of 2017  
14. Hydrographic Survey of 2018  
15. Hydrographic Survey of 2019  
16. Hydrographic Survey of 2020  
17. Hydrographic Survey of 2021  
18. Hydrographic Survey of 2022  
19. Hydrographic Survey of 2023  
20. Hydrographic Survey of 2024  
21. Hydrographic Survey of 2025  
22. Hydrographic Survey of 2026  
23. Hydrographic Survey of 2027  
24. Hydrographic Survey of 2028  
25. Hydrographic Survey of 2029  
26. Hydrographic Survey of 2030

Hydrographic Survey of 1915  
Hydrographic Survey of 1925  
Hydrographic Survey of 1935  
Hydrographic Survey of 1945  
Hydrographic Survey of 1955  
Hydrographic Survey of 1965  
Hydrographic Survey of 1975  
Hydrographic Survey of 1985  
Hydrographic Survey of 1995  
Hydrographic Survey of 2005  
Hydrographic Survey of 2015  
Hydrographic Survey of 2016  
Hydrographic Survey of 2017  
Hydrographic Survey of 2018  
Hydrographic Survey of 2019  
Hydrographic Survey of 2020  
Hydrographic Survey of 2021  
Hydrographic Survey of 2022  
Hydrographic Survey of 2023  
Hydrographic Survey of 2024  
Hydrographic Survey of 2025  
Hydrographic Survey of 2026  
Hydrographic Survey of 2027  
Hydrographic Survey of 2028  
Hydrographic Survey of 2029  
Hydrographic Survey of 2030



Legend

- Soundings: 1-22
- Channel Markings: R 36", R 34", R 33"
- Obstructions: Pile, Log, etc.
- Other: Subm piles, etc.

Scale: 1 inch = 250 feet

Projection: NAD 1983 StatePlane South Carolina FIPS 3200 Feet

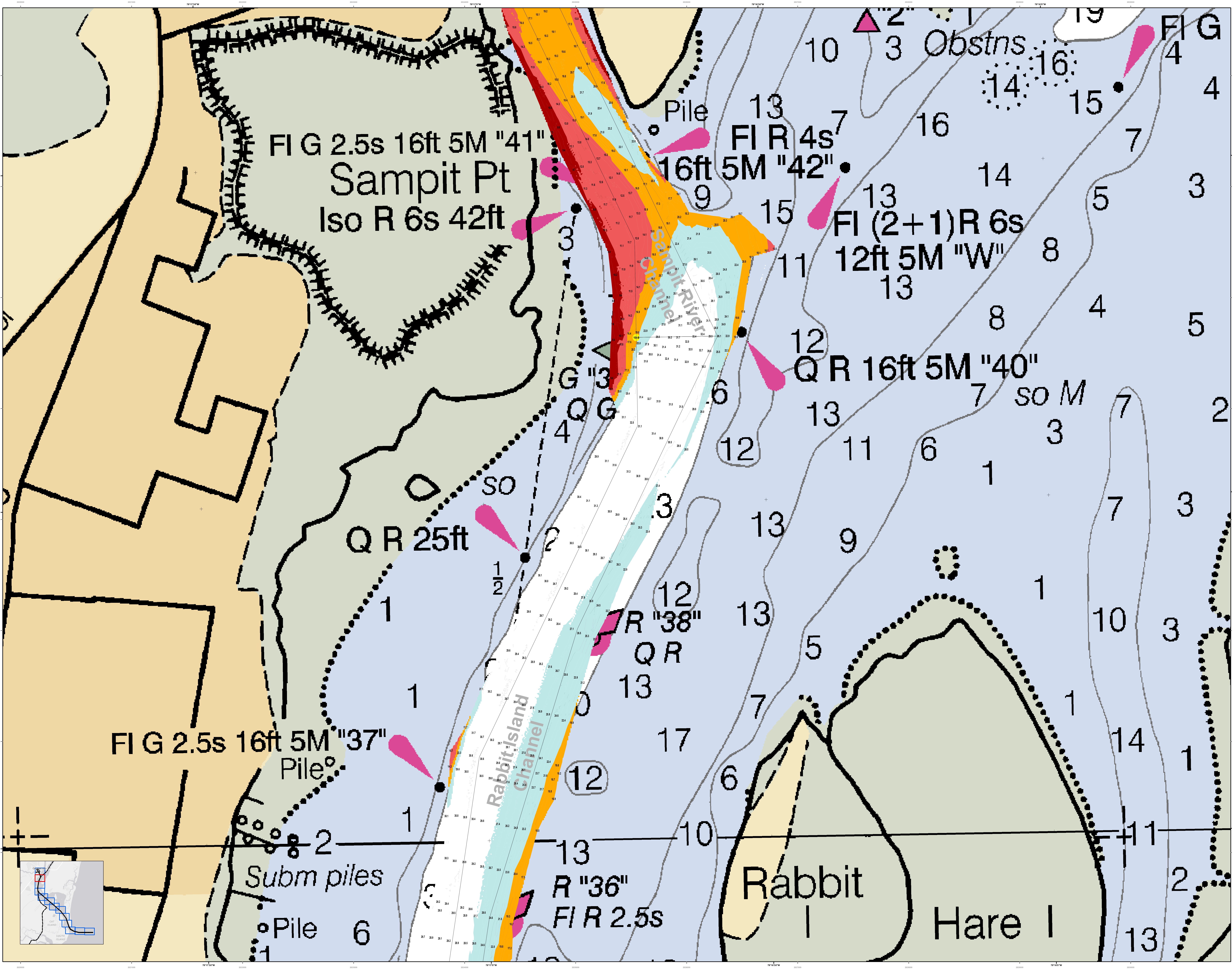
Designed by: [Name]  
Reviewed by: [Name]  
Scale: 1 inch = 250 feet  
Projection: NAD 1983 StatePlane South Carolina FIPS 3200 Feet

U.S. Army Corps of Engineers  
Charleston District  
Charleston, South Carolina  
3100 Canal Blvd  
Charleston, SC 29405  
CESAC-GIS@USACE.ARMY.MIL

Georgetown Harbor Channel Survey  
The information depicted on this map represents the results of surveys made on the dates indicated and can only be considered as indicating the general character of the bottom and is not to be used as a navigational aid.  
Concluded on: 29 January 2015  
Georgetown, South Carolina

SHEET REFERENCE NUMBER  
C001  
SHEET 11 OF 13





U.S. Army Corps of Engineers  
Charleston District

**Georgetown Harbor Channel Survey**  
The information depicted on this map represents the results of surveys made on the dates indicated and can only be considered as indicating the general character of the bottom and is not to be used for navigation. Concluded on: 29 January 2015  
Georgetown, South Carolina

Designed by: U.S. Army Corps of Engineers, District Office, Charleston, SC  
Reviewed by: U.S. Army Corps of Engineers, District Office, Charleston, SC  
Project Reference Number: 15000  
Survey Type: Single-beam Condition  
Scale: 1 inch = 250 feet  
Projection: NAD 1983 StatePlane South Carolina FIPS 3200 Feet

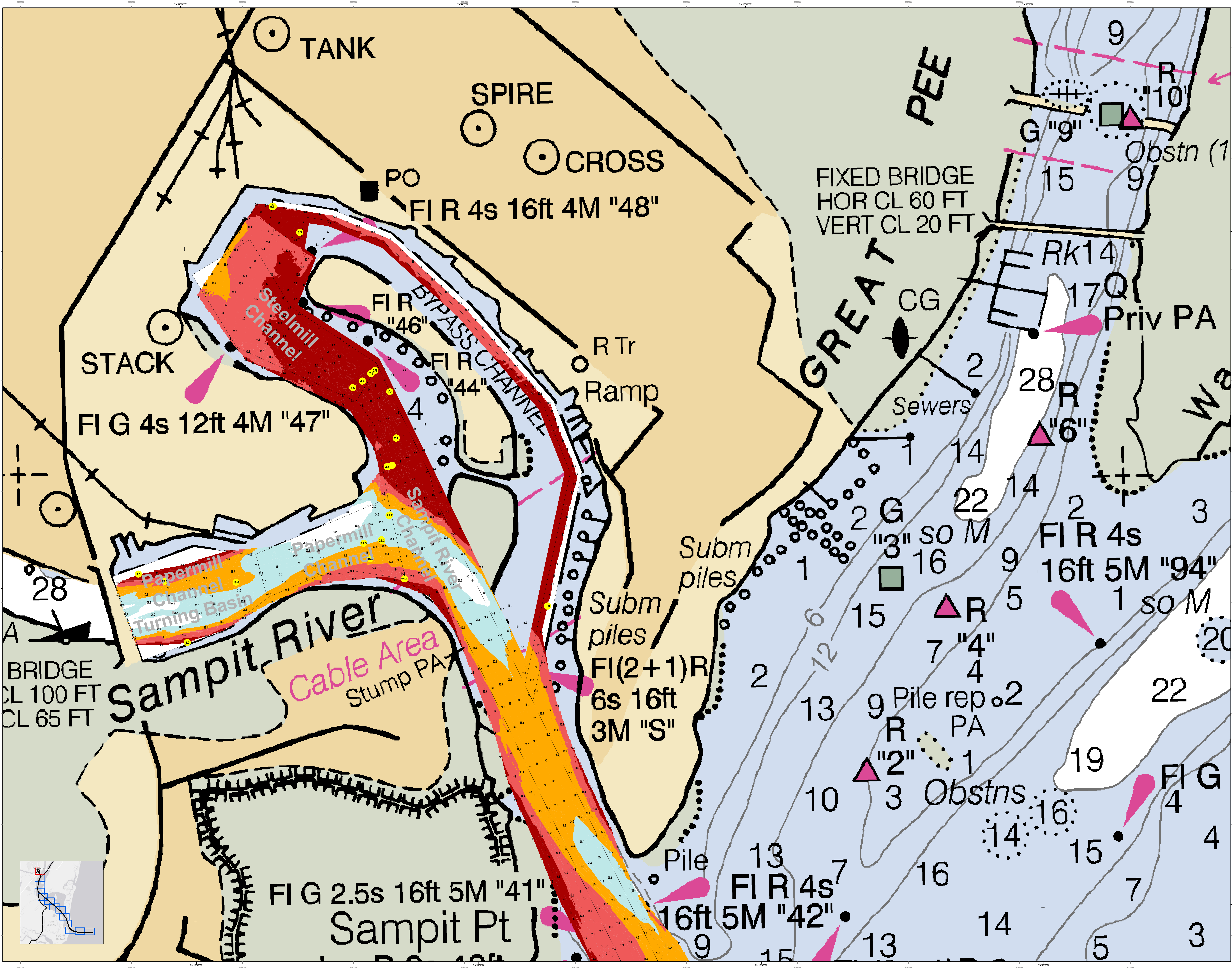
**Legend**

- Soundings: 1, 2, 3, 4, 5, 6, 7, 8, 9, 10, 11, 12, 13, 14, 15, 16, 17, 18, 19
- Obstns: 1, 2, 3, 4, 5, 6, 7, 8, 9, 10, 11, 12, 13, 14, 15, 16, 17, 18, 19
- Channel Markings: FI G 2.5s 16ft 5M "41", Sampit Pt Iso R 6s 42ft, FI R 4s, FI (2+1)R 6s 12ft 5M "W", QR 16ft 5M "40", QR 25ft, R "38", QR, R "36", FI R 2.5s, Rabbit Island Channel, Rabbit Hare I
- Other: Pile, Subm piles, SO M

Scale: 0 125 250 500 750 Feet

North Arrow





In the event that the U.S. Army Corps of Engineers, Charleston District Office, is unable to be reached for assistance, the user should refer to the following information for guidance. This information is provided for informational purposes only and does not constitute a warranty. The user should consult the project description and other project documents for more information. If you have any questions, please contact the project manager.

**Projection:** NAD 1983 StatePlane South Carolina FIPS 3200 Feet  
**Scale:** 1 inch = 250 feet  
**Units:** Feet

**Legend:**

- Water Depth
- Obstruction
- Structure
- Utility
- Submerged

**Design:** 19 Feb 2015  
**Project:** GEOTOWN HARBOR CHANNEL SURVEY  
**Scale:** 1 inch = 250 feet  
**Projection:** NAD 1983 StatePlane South Carolina FIPS 3200 Feet

**Georgetown Harbor Channel Survey**  
The information depicted on this map represents the results of surveys made on the dates indicated and can only be considered as indicating the general location of obstructions. It is not intended to be used for navigation. The user is encouraged to use all prudent safety measures.

**Concluded on: 29 January 2015**  
**Georgetown, South Carolina**

**SHEET REFERENCE NUMBER**  
C001  
SHEET 13 OF 13