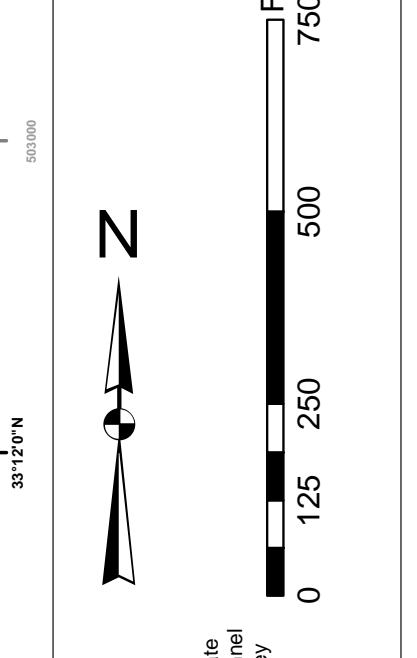
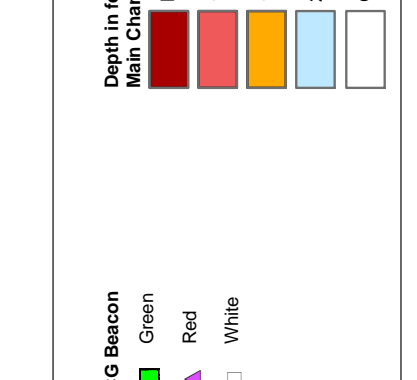


In accordance with the U.S. Army Corps of Engineers, Charleston District Office, Special Order 3000, the information depicted on this map represents the results of surveys made on the dates indicated and can only be considered as indicating the general location of the objects shown. It is not intended to be used for navigation. Mariners are encouraged to use all prudent safety measures.

**Production Note:**  
1. This is a planning document only.  
2. It is not intended to be used for navigation.  
3. Storage and use of this information is restricted to the project only.  
4. All data is based on the latest available information.  
5. The information is not to be used for navigation.  
6. The information is not to be used for navigation.



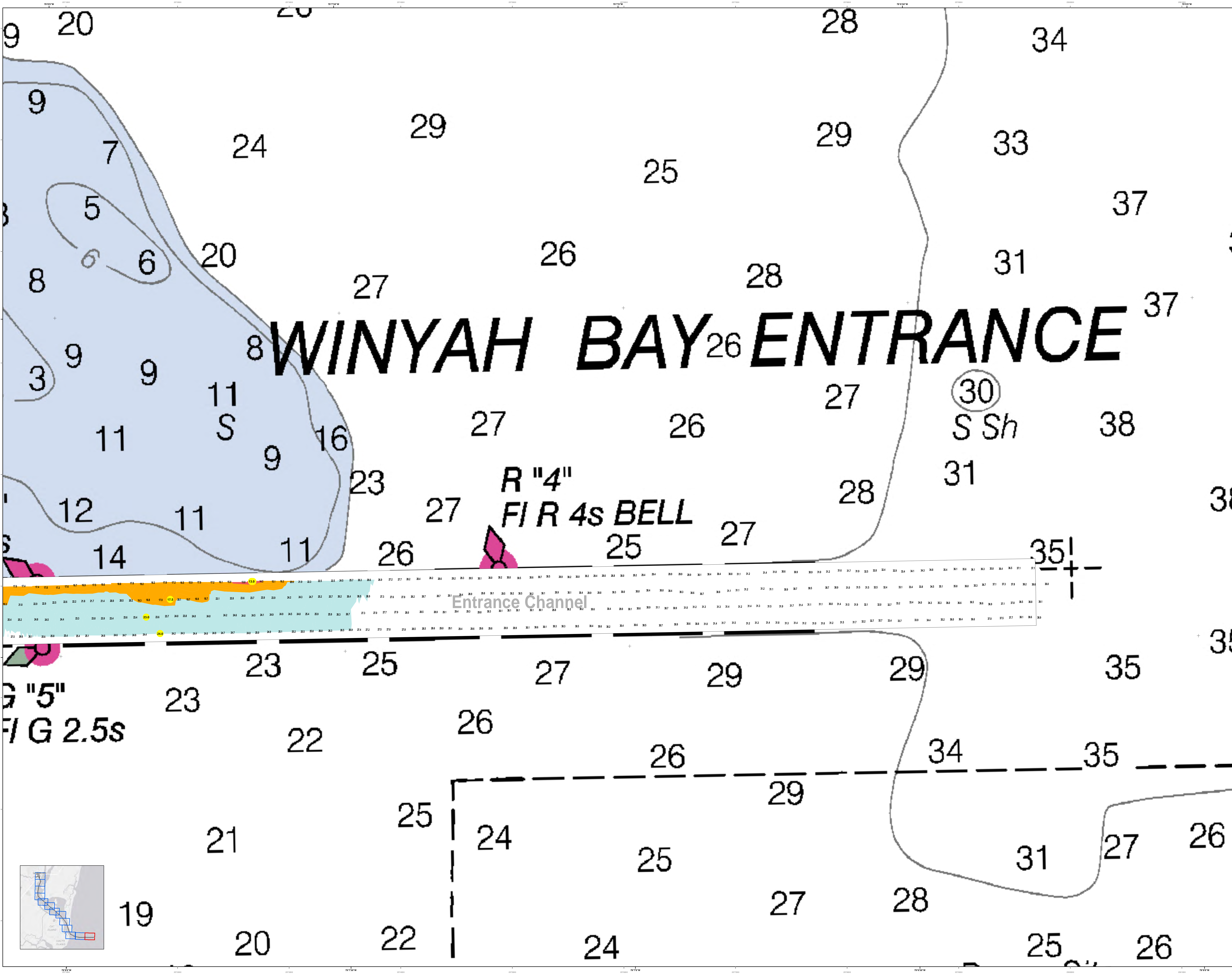
**Bylaws Charted Note:**  
1. The hydrographic information shown on this chart is based on the latest available information.  
2. The information is not to be used for navigation.  
3. Storage and use of this information is restricted to the project only.



**Legend:**  
Soundings: 1. 100 to 150, 2. 151 to 200, 3. 201 to 250, 4. 251 to 300, 5. 301 to 350, 6. 351 to 400, 7. 401 to 450, 8. 451 to 500, 9. 501 to 550, 10. 551 to 600, 11. 601 to 650, 12. 651 to 700, 13. 701 to 750, 14. 751 to 800, 15. 801 to 850, 16. 851 to 900, 17. 901 to 950, 18. 951 to 1000, 19. 1000 and over.  
Depth: 1. 100 to 150, 2. 151 to 200, 3. 201 to 250, 4. 251 to 300, 5. 301 to 350, 6. 351 to 400, 7. 401 to 450, 8. 451 to 500, 9. 501 to 550, 10. 551 to 600, 11. 601 to 650, 12. 651 to 700, 13. 701 to 750, 14. 751 to 800, 15. 801 to 850, 16. 851 to 900, 17. 901 to 950, 18. 951 to 1000, 19. 1000 and over.

Designed by:	Hydro Software v3.02	Production Date:	02 Jun 2015
Reviewed by:	1:50,000	Project Reference Number:	10AUG2015
Scale:	1 inch = 250 feet	Survey Type:	Single-beam Condition Survey
Projection:	NAD 1983 StatePlane South Carolina FIPS 3800 Feet		

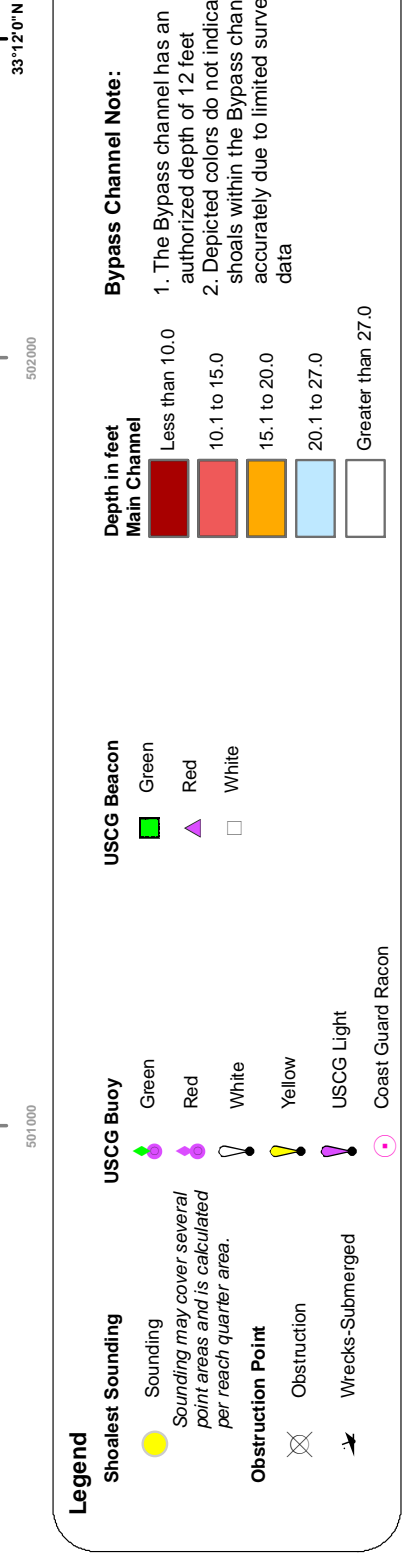
**Georgetown Harbor Channel Survey**  
The information depicted on this map represents the results of surveys made on the dates indicated and can only be considered as indicating the general location of the objects shown. It is not intended to be used for navigation. Mariners are encouraged to use all prudent safety measures.  
Concluded on: 02 June 2015  
Georgetown, South Carolina





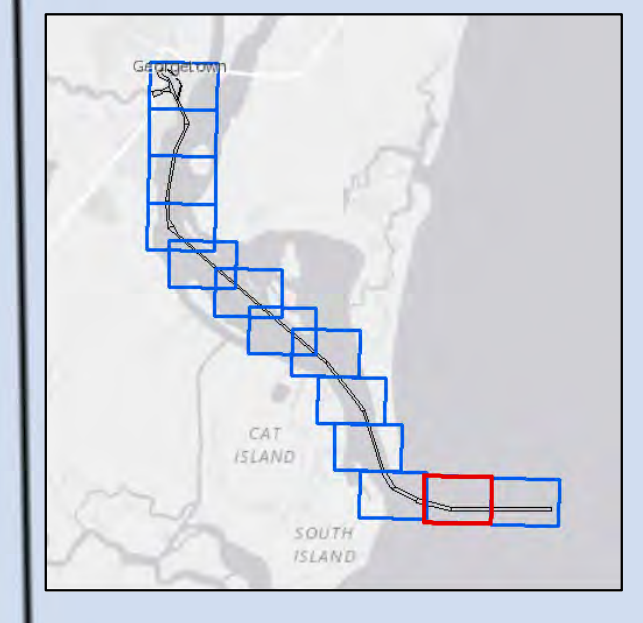
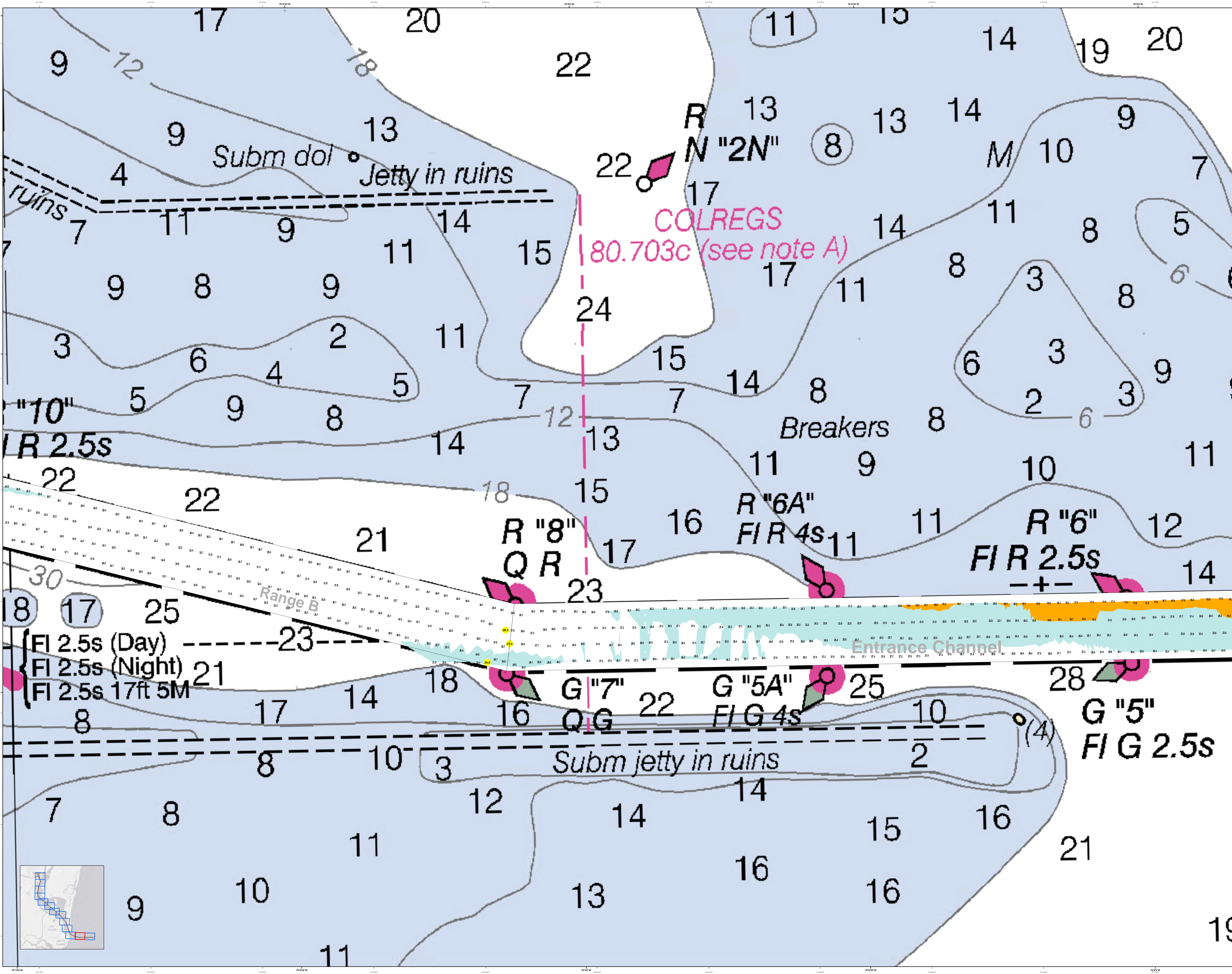
**Production Note:**  
This map is the property of the U.S. Army Corps of Engineers, Charleston District Office. It is to be used only for the purposes for which it was prepared. It is not to be used for any other purpose without the written approval of the District Engineer. The information on this map represents the results of surveys made on the dates indicated and can only be considered as indicating the general location of the points shown. It is not to be used for precise measurements.

**Projections Note:**  
This map is based on the datum of the original survey. The datum of the original survey is not known, but it is believed to be the same as the datum of the original survey. The datum of the original survey is not known, but it is believed to be the same as the datum of the original survey.

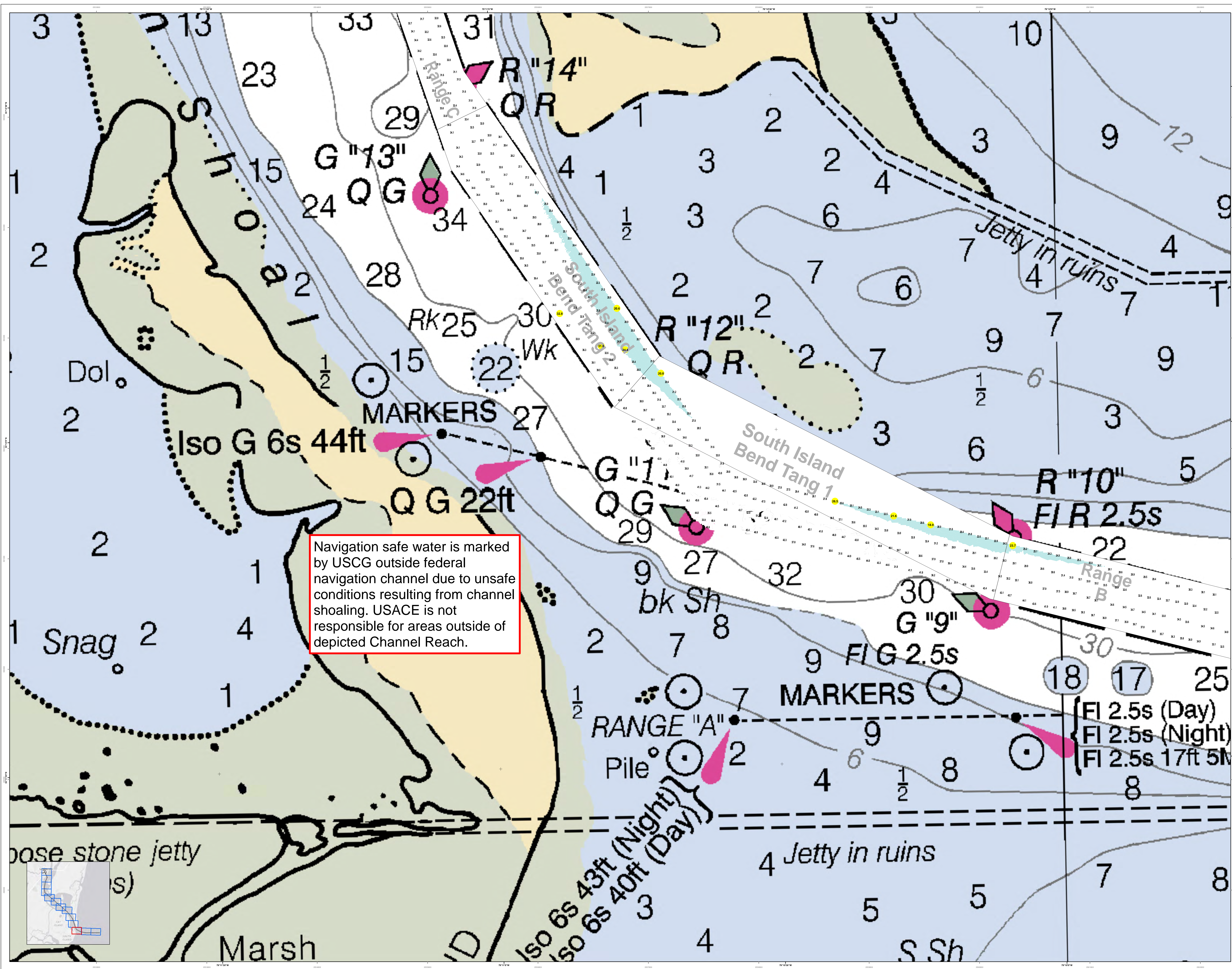


Designed by:	Hydro Software v3.82
Reviewed by:	1:5000
Scale:	1 inch = 250 feet
Projection:	NAD 83 StatePlane South Carolina FIPS 3800 Feet

**Georgetown Harbor Channel Survey**  
The information depicted on this map represents the results of surveys made on the dates indicated and can only be considered as indicating the general location of the points shown. It is not to be used for precise measurements.  
Concluded on: 02 June 2015  
Georgetown, South Carolina

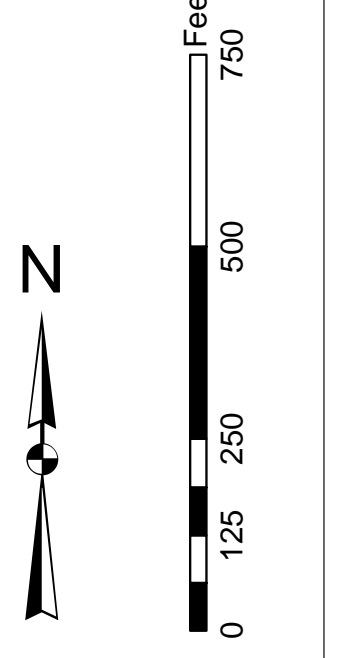






Navigation safe water is marked by USCG outside federal navigation channel due to unsafe conditions resulting from channel shoaling. USACE is not responsible for areas outside of depicted Channel Reach.

**Production Note:**  
1. This is a preliminary nautical chart. It is not to be used for navigation without the aid of other charts and information.  
2. There are no soundings shown in this chart which have been determined to be obsolete.  
3. Obsolete soundings are indicated by the number 0.  
4. The chart is based on the latest available data.  
5. The chart is subject to change without notice.  
6. The chart is not to be used for navigation without the aid of other charts and information.  
7. The chart is not to be used for navigation without the aid of other charts and information.  
8. The chart is not to be used for navigation without the aid of other charts and information.  
9. The chart is not to be used for navigation without the aid of other charts and information.  
10. The chart is not to be used for navigation without the aid of other charts and information.



**Legend:**  
Buoys: G (Green), Q (Red), R (Yellow), Iso G (White), FI (Flotation Light), G (Green), Q (Red), R (Yellow), Iso G (White)  
Range: A (Black), B (Red), C (Yellow)  
Other: Jetty in ruins, Snag, Marsh, etc.

**Legend (continued):**  
Soundings: 0 (Obsolete), 1 (1 to 10), 2 (11 to 20), 3 (21 to 30), 4 (31 to 40), 5 (41 to 50), 6 (51 to 60), 7 (61 to 70), 8 (71 to 80), 9 (81 to 90), 10 (91 to 100), 11 (101 to 110), 12 (111 to 120), 13 (121 to 130), 14 (131 to 140), 15 (141 to 150), 16 (151 to 160), 17 (161 to 170), 18 (171 to 180), 19 (181 to 190), 20 (191 to 200), 21 (201 to 210), 22 (211 to 220), 23 (221 to 230), 24 (231 to 240), 25 (241 to 250), 26 (251 to 260), 27 (261 to 270), 28 (271 to 280), 29 (281 to 290), 30 (291 to 300), 31 (301 to 310), 32 (311 to 320), 33 (321 to 330), 34 (331 to 340), 35 (341 to 350), 36 (351 to 360), 37 (361 to 370), 38 (371 to 380), 39 (381 to 390), 40 (391 to 400), 41 (401 to 410), 42 (411 to 420), 43 (421 to 430), 44 (431 to 440), 45 (441 to 450), 46 (451 to 460), 47 (461 to 470), 48 (471 to 480), 49 (481 to 490), 50 (491 to 500), 51 (501 to 510), 52 (511 to 520), 53 (521 to 530), 54 (531 to 540), 55 (541 to 550), 56 (551 to 560), 57 (561 to 570), 58 (571 to 580), 59 (581 to 590), 60 (591 to 600), 61 (601 to 610), 62 (611 to 620), 63 (621 to 630), 64 (631 to 640), 65 (641 to 650), 66 (651 to 660), 67 (661 to 670), 68 (671 to 680), 69 (681 to 690), 70 (691 to 700), 71 (701 to 710), 72 (711 to 720), 73 (721 to 730), 74 (731 to 740), 75 (741 to 750), 76 (751 to 760), 77 (761 to 770), 78 (771 to 780), 79 (781 to 790), 80 (791 to 800), 81 (801 to 810), 82 (811 to 820), 83 (821 to 830), 84 (831 to 840), 85 (841 to 850), 86 (851 to 860), 87 (861 to 870), 88 (871 to 880), 89 (881 to 890), 90 (891 to 900), 91 (901 to 910), 92 (911 to 920), 93 (921 to 930), 94 (931 to 940), 95 (941 to 950), 96 (951 to 960), 97 (961 to 970), 98 (971 to 980), 99 (981 to 990), 100 (991 to 1000)

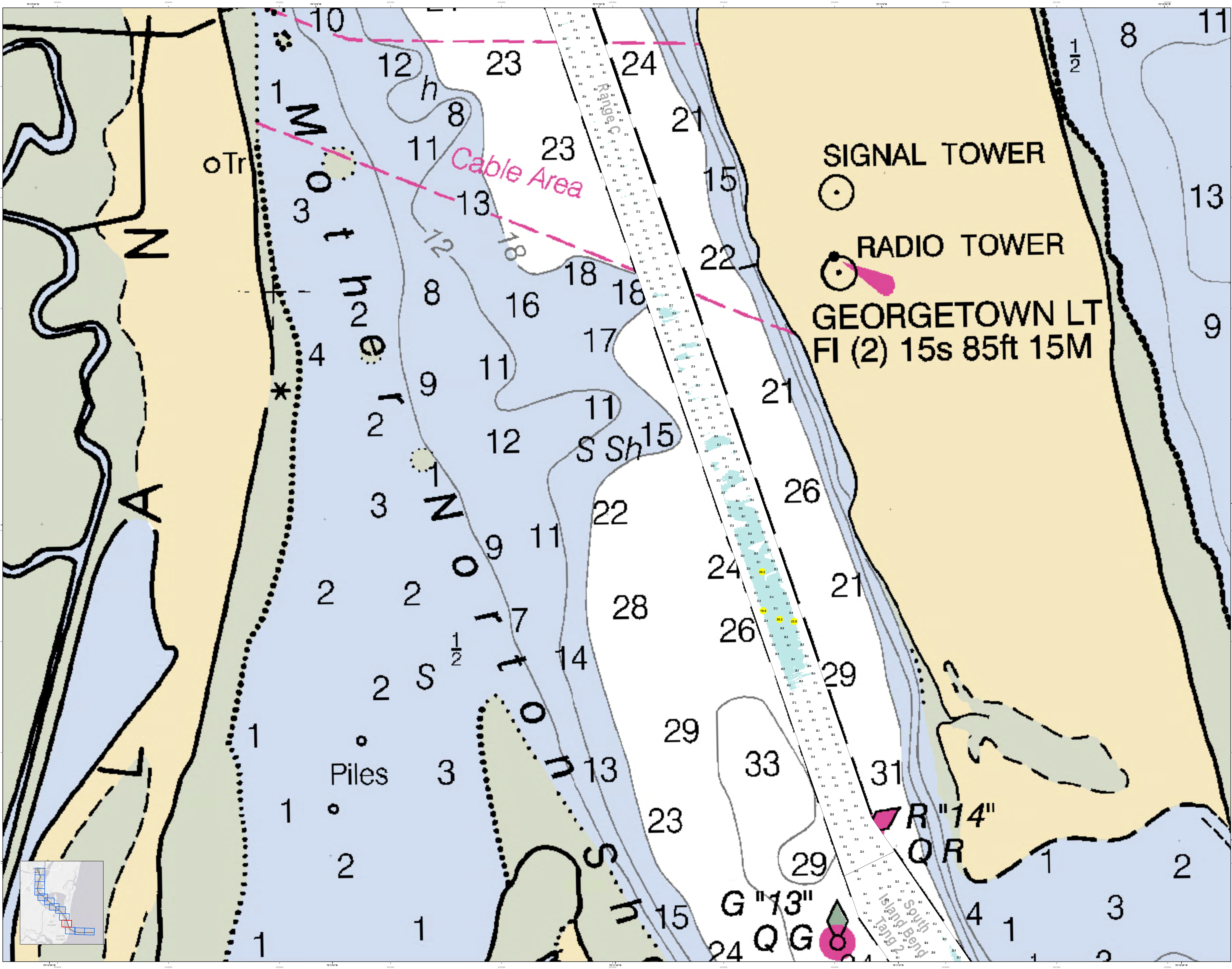
**Production Date:** 10 Aug 2015  
**Survey Date:** 02 Jun 2015  
**Project Reference Number:** 13000  
**Scale:** 1 inch = 250 feet  
**Projection:** NAD 1983 StatePlane South Carolina FIPS 3800 Feet

**Designed by:** U.S. Army Corps of Engineers  
**Reviewed by:** U.S. Army Corps of Engineers  
**Checked by:** U.S. Army Corps of Engineers  
**Produced by:** U.S. Army Corps of Engineers  
**Project:** Georgetown Harbor Channel Survey

**Georgetown Harbor Channel Survey**  
The information depicted on this map represents the results of surveys made on the dates indicated and can only be considered as indicating the general nature of the channel and its depth.  
Concluded on: 02 June 2015  
Georgetown, South Carolina

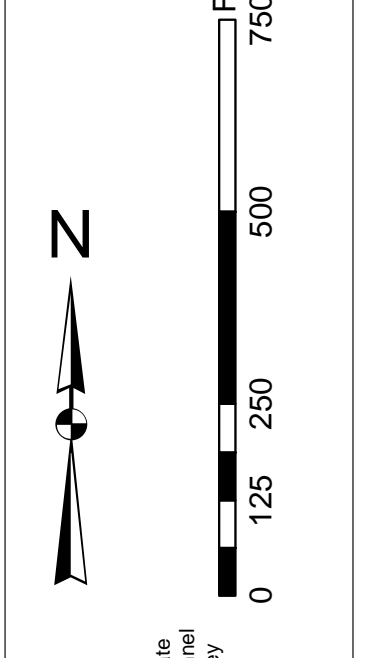
**SHEET REFERENCE NUMBER:**  
C001  
SHEET 3 OF 13





In accordance with the U.S. Army Corps of Engineers, Charleston District Office, Special District Office, Charleston, South Carolina, the information depicted on this map represents the results of surveys made on the dates indicated and can only be considered as indicating the general character of the data. It is not intended to be used for navigation. The data is not intended to be used for navigation. The data is not intended to be used for navigation.

**Prepared Notes:**  
1. This is a preliminary chart.  
2. The information on this chart is based on the data available at the time of publication.  
3. Storage and use of this chart is subject to the terms and conditions of the license agreement.

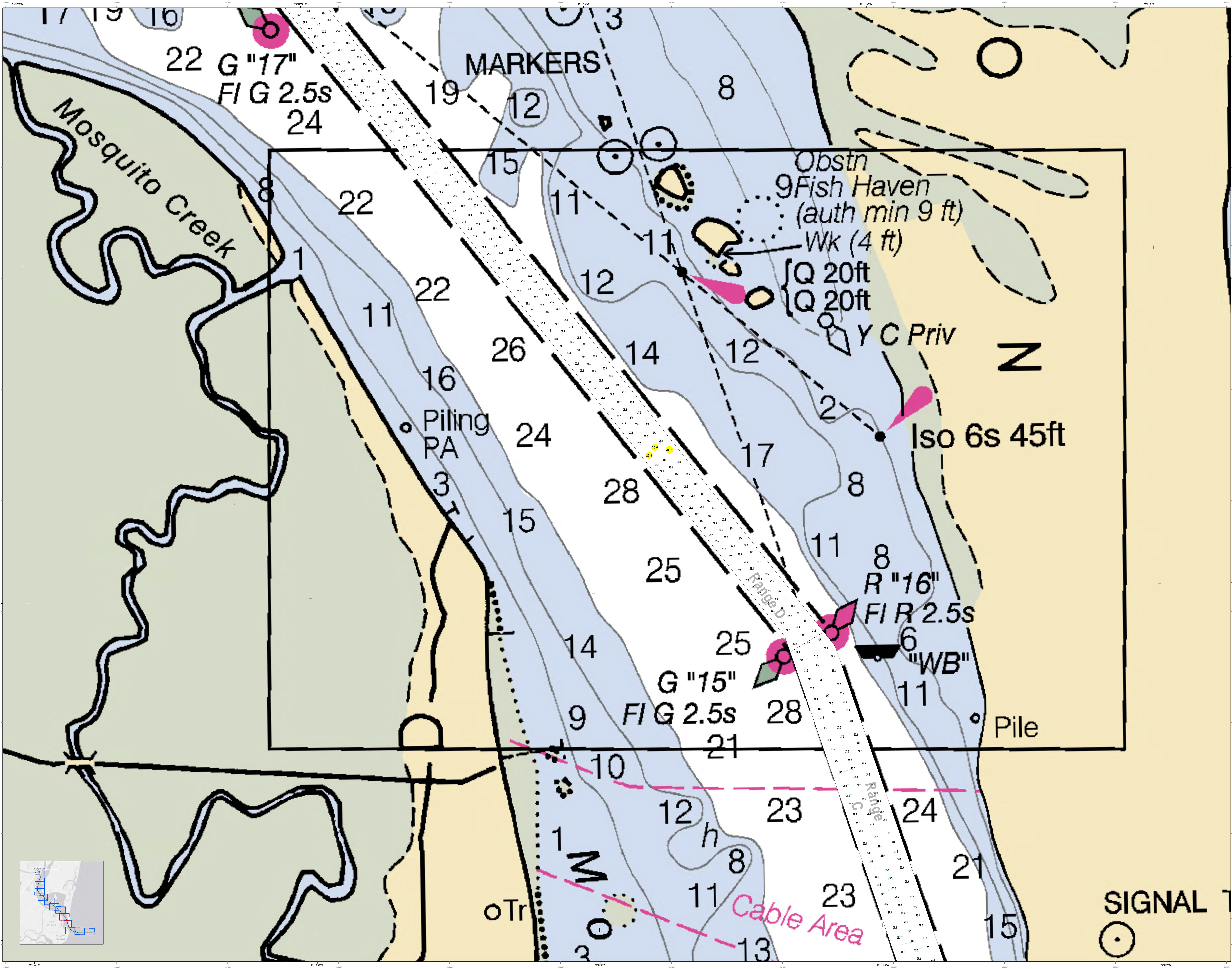


**Legend:**  
Soundings: 1-10, 11-15, 16-20, 21-25, 26-30, 31-35  
Obstructions: Piles, Rocks, etc.  
Other: Signal Tower, Radio Tower, etc.

**U.S. Army Corps of Engineers**  
Charleston District Office  
Charleston, South Carolina  
Project: Georgetown Harbor Channel  
Survey: Single-beam Condition Survey  
Scale: 1 inch = 250 feet  
Projection: NAD 1983 StatePlane South Carolina FIPS 3800 Feet

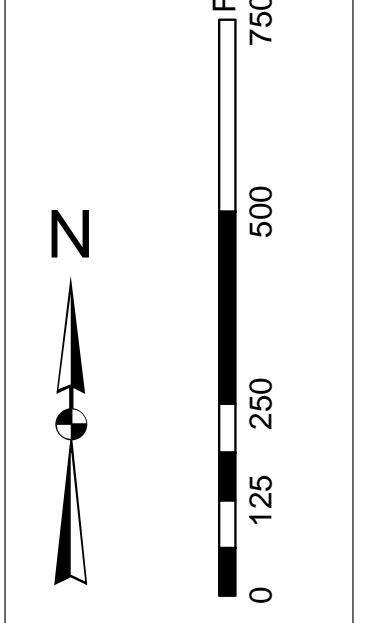
**Georgetown Harbor Channel Survey**  
The information depicted on this map represents the results of surveys made on the dates indicated and can only be considered as indicating the general character of the data. It is not intended to be used for navigation. The data is not intended to be used for navigation.  
Concluded on: 02 June 2015  
Georgetown, South Carolina





In accordance with the U.S. Army Corps of Engineers, Charleston District Office, Special Operations Manual, Section 10.1.1, the information depicted on this map represents the results of surveys made on the dates indicated and can only be considered as indicating the general character of the data. It is not intended to be used for navigation. Markers are encouraged to use all proper safety measures.

**Prepared Notes:**  
1. This is a hydrographic survey.  
2. The information depicted on this map represents the results of surveys made on the dates indicated and can only be considered as indicating the general character of the data. It is not intended to be used for navigation. Markers are encouraged to use all proper safety measures.



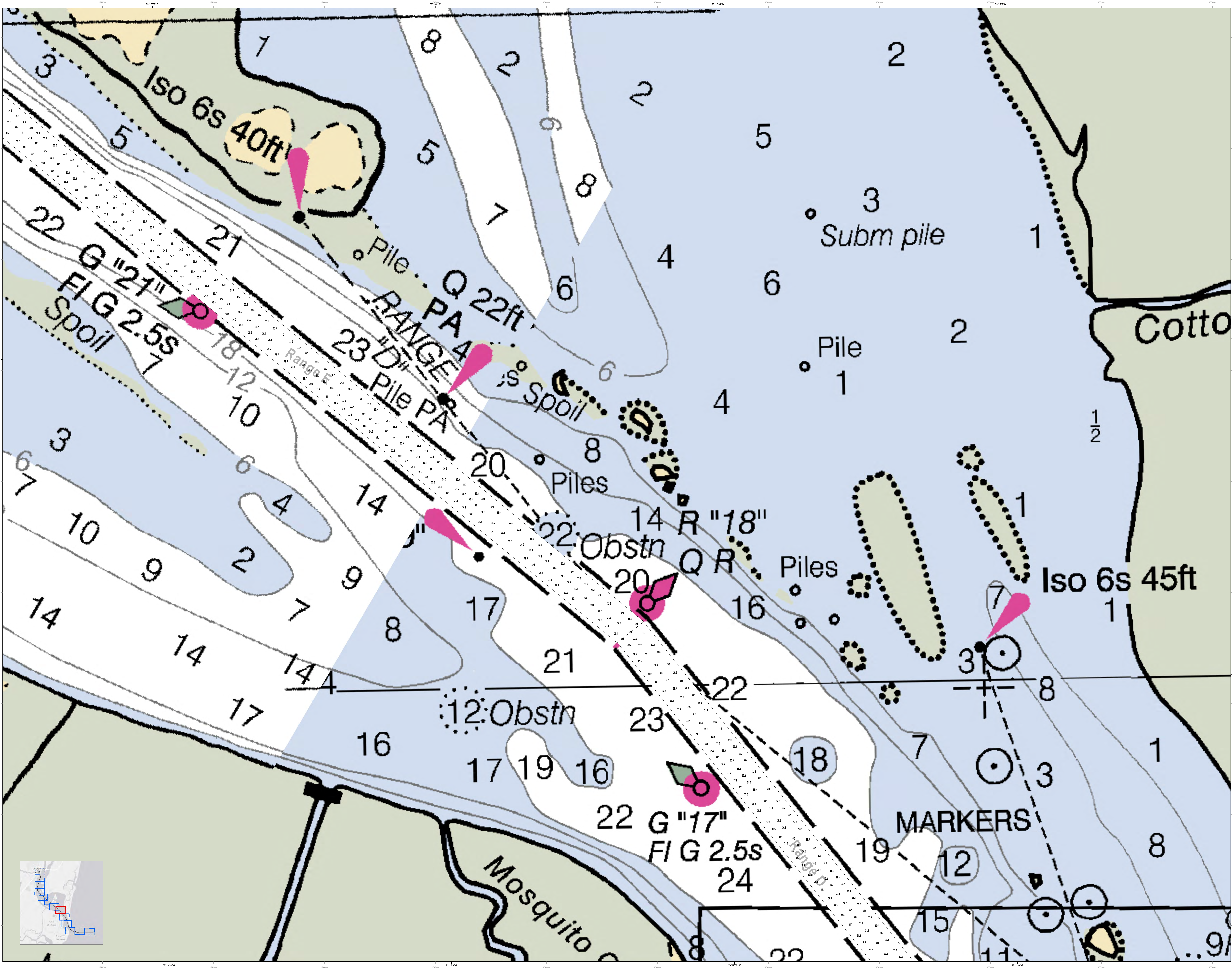
**Depth Contours:**  
1 to 10 ft  
11 to 15 ft  
16 to 20 ft  
21 to 25 ft  
26 to 30 ft

**Legend:**  
Obstruction  
Piling  
Range  
Signal  
Tr  
W  
Y C Priv  
Iso 6s 45ft  
R "16" FIR 2.5s  
G "15" FIG 2.5s  
G "17" FIG 2.5s

Designed by:	Hydro Software v3.02	Production Date:	10 Aug 2015
Reviewed by:	1:50,000	Project Reference Number:	1000013
Scale:	1 inch = 250 feet	Survey Type:	Single-beam Condition Survey
Projection:	NAD 1983 StatePlane South Carolina FIPS 3800 Feet		

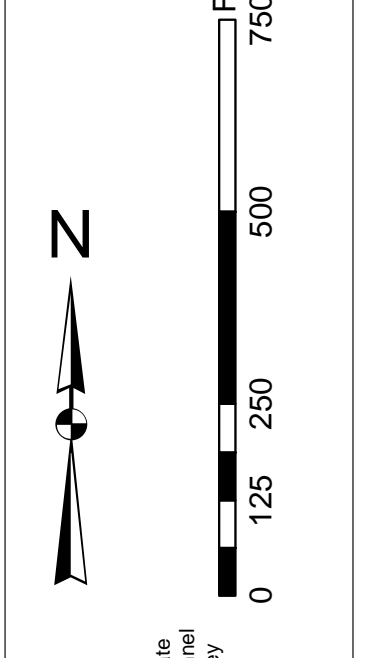
**Georgetown Harbor Channel Survey**  
The information depicted on this map represents the results of surveys made on the dates indicated and can only be considered as indicating the general character of the data. It is not intended to be used for navigation. Markers are encouraged to use all proper safety measures.  
Concluded on: 02 June 2015  
Georgetown, South Carolina





This chart was prepared by the U.S. Army Corps of Engineers, Charleston District Office. Soundings are in feet unless otherwise noted. The chart is not to be used for navigation purposes. It is intended for informational purposes only. The chart is not to be used for navigation purposes. It is intended for informational purposes only. The chart is not to be used for navigation purposes. It is intended for informational purposes only.

**Projections:**  
1. Transverse Mercator  
2. Universal Transverse Mercator  
3. State Plane  
4. UTM  
5. NAD 83  
6. NAD 2011

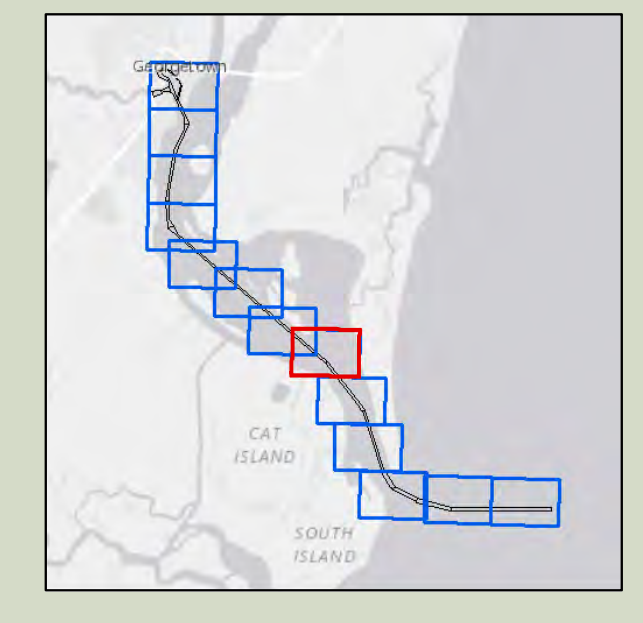


**Soundings:**  
1. 1 to 10  
2. 11 to 20  
3. 21 to 30  
4. 31 to 40  
5. 41 to 50  
6. 51 to 60  
7. 61 to 70  
8. 71 to 80  
9. 81 to 90  
10. 91 to 100

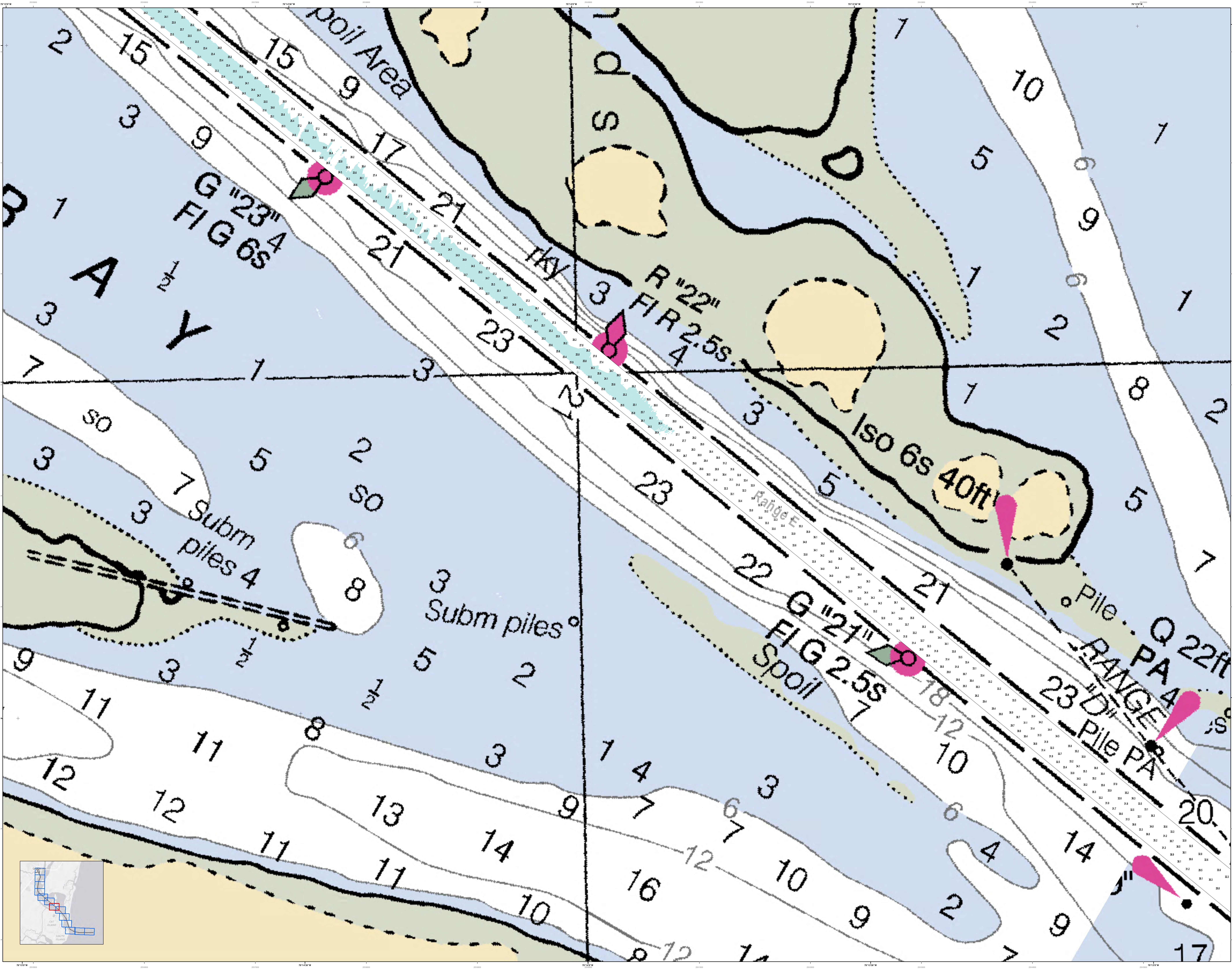
**Legend:**  
Obstruction  
Pile  
Subm pile  
Iso 6s  
Range  
Bearing  
MARKERS

Designed by:	Survey Date:	Production Date:
Reviewed by:	Project Reference Number:	Project Reference Number:
Scale:	Scale:	Scale:
Projection:	Projection:	Projection:

**Georgetown Harbor Channel Survey**  
The information depicted on this map represents the results of surveys made on the dates indicated and can only be considered as indicating the general location of the objects shown. It is not to be used for navigation purposes.  
Concluded on: 02 June 2015  
Georgetown, South Carolina

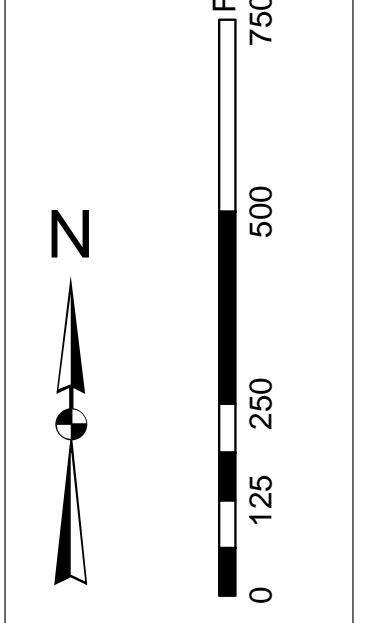






In accordance with the U.S. Army Corps of Engineers, Charleston District Office, Special Order 100-100, the information depicted on this map represents the results of surveys made on the dates indicated and can only be considered as indicating the general character of the data. It is not intended to be used for navigation. Mariners are encouraged to use all prudent safety measures.

**Prepared Notes:**  
1. This is a planning document only.  
2. This is not a final product.  
3. Storage and use are limited.  
4. This is not a final product.  
5. Storage and use are limited.



**Legend:**  
Spoil Area  
Subm piles  
Range E  
Range PA  
Range Q  
Pile PA  
Pile Q  
Pile PA  
Pile Q

**Designated by:** U.S. Army Corps of Engineers, Charleston District Office  
**Produced by:** U.S. Army Corps of Engineers, Charleston District Office

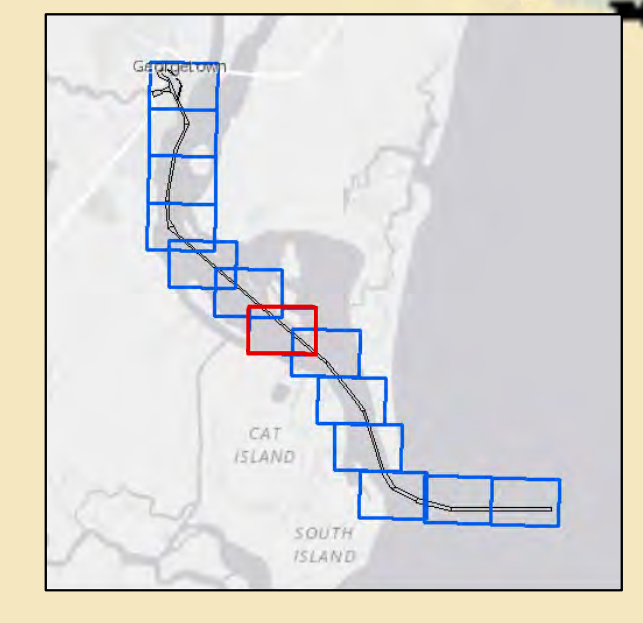
**Survey Date:** 02 Jun 2015  
**Production Date:** 10 Aug 2015  
**Project Reference Number:** 13000  
**Scale:** 1 inch = 250 feet  
**Projection:** NAD 1983 StatePlane South Carolina EPS 3800 Feet

**Designed by:** U.S. Army Corps of Engineers, Charleston District Office  
**Produced by:** U.S. Army Corps of Engineers, Charleston District Office

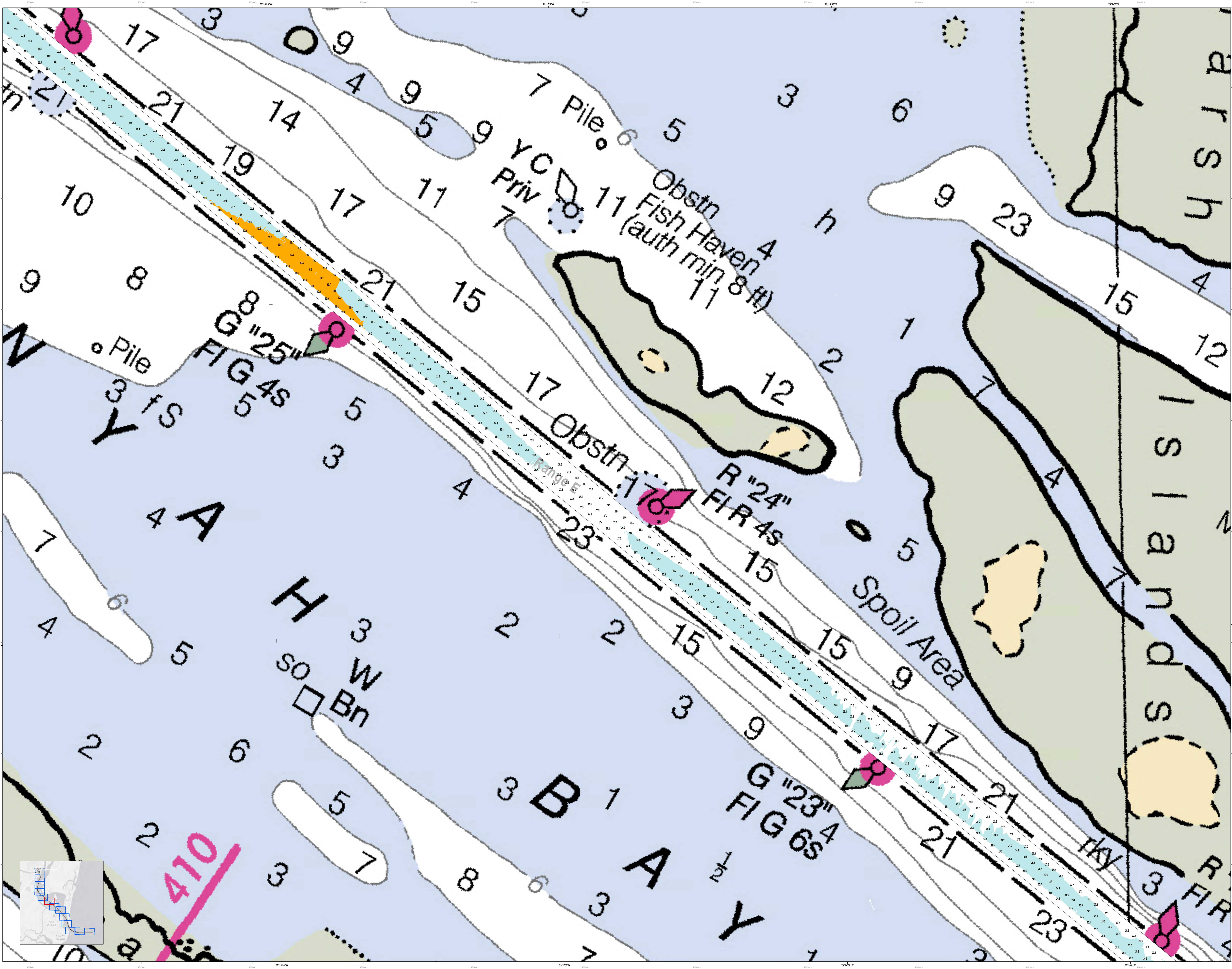
**Georgetown Harbor Channel Survey**  
The information depicted on this map represents the results of surveys made on the dates indicated and can only be considered as indicating the general character of the data. It is not intended to be used for navigation. Mariners are encouraged to use all prudent safety measures.

Concluded on: 02 June 2015  
Georgetown, South Carolina

SHEET REFERENCE NUMBER  
C001  
SHEET 7 OF 13







**U.S. Army Corps of Engineers**  
Charleston District

**Georgetown Harbor Channel Survey**  
The information depicted on this map represents the results of surveys made on the dates indicated and can only be considered as indicating the general character of the channel. It is not intended to be used for navigation.

**Legend:**

- Obstruction
- Obstruction (auth min 8-ft)
- Obstruction (auth min 10-ft)
- Obstruction (auth min 15-ft)
- Obstruction (auth min 20-ft)
- Obstruction (auth min 25-ft)
- Obstruction (auth min 30-ft)
- Obstruction (auth min 35-ft)
- Obstruction (auth min 40-ft)
- Obstruction (auth min 45-ft)
- Obstruction (auth min 50-ft)
- Obstruction (auth min 55-ft)
- Obstruction (auth min 60-ft)
- Obstruction (auth min 65-ft)
- Obstruction (auth min 70-ft)
- Obstruction (auth min 75-ft)
- Obstruction (auth min 80-ft)
- Obstruction (auth min 85-ft)
- Obstruction (auth min 90-ft)
- Obstruction (auth min 95-ft)
- Obstruction (auth min 100-ft)
- Obstruction (auth min 105-ft)
- Obstruction (auth min 110-ft)
- Obstruction (auth min 115-ft)
- Obstruction (auth min 120-ft)
- Obstruction (auth min 125-ft)
- Obstruction (auth min 130-ft)
- Obstruction (auth min 135-ft)
- Obstruction (auth min 140-ft)
- Obstruction (auth min 145-ft)
- Obstruction (auth min 150-ft)
- Obstruction (auth min 155-ft)
- Obstruction (auth min 160-ft)
- Obstruction (auth min 165-ft)
- Obstruction (auth min 170-ft)
- Obstruction (auth min 175-ft)
- Obstruction (auth min 180-ft)
- Obstruction (auth min 185-ft)
- Obstruction (auth min 190-ft)
- Obstruction (auth min 195-ft)
- Obstruction (auth min 200-ft)
- Obstruction (auth min 205-ft)
- Obstruction (auth min 210-ft)
- Obstruction (auth min 215-ft)
- Obstruction (auth min 220-ft)
- Obstruction (auth min 225-ft)
- Obstruction (auth min 230-ft)
- Obstruction (auth min 235-ft)
- Obstruction (auth min 240-ft)
- Obstruction (auth min 245-ft)
- Obstruction (auth min 250-ft)
- Obstruction (auth min 255-ft)
- Obstruction (auth min 260-ft)
- Obstruction (auth min 265-ft)
- Obstruction (auth min 270-ft)
- Obstruction (auth min 275-ft)
- Obstruction (auth min 280-ft)
- Obstruction (auth min 285-ft)
- Obstruction (auth min 290-ft)
- Obstruction (auth min 295-ft)
- Obstruction (auth min 300-ft)
- Obstruction (auth min 305-ft)
- Obstruction (auth min 310-ft)
- Obstruction (auth min 315-ft)
- Obstruction (auth min 320-ft)
- Obstruction (auth min 325-ft)
- Obstruction (auth min 330-ft)
- Obstruction (auth min 335-ft)
- Obstruction (auth min 340-ft)
- Obstruction (auth min 345-ft)
- Obstruction (auth min 350-ft)
- Obstruction (auth min 355-ft)
- Obstruction (auth min 360-ft)
- Obstruction (auth min 365-ft)
- Obstruction (auth min 370-ft)
- Obstruction (auth min 375-ft)
- Obstruction (auth min 380-ft)
- Obstruction (auth min 385-ft)
- Obstruction (auth min 390-ft)
- Obstruction (auth min 395-ft)
- Obstruction (auth min 400-ft)
- Obstruction (auth min 405-ft)
- Obstruction (auth min 410-ft)
- Obstruction (auth min 415-ft)
- Obstruction (auth min 420-ft)
- Obstruction (auth min 425-ft)
- Obstruction (auth min 430-ft)
- Obstruction (auth min 435-ft)
- Obstruction (auth min 440-ft)
- Obstruction (auth min 445-ft)
- Obstruction (auth min 450-ft)
- Obstruction (auth min 455-ft)
- Obstruction (auth min 460-ft)
- Obstruction (auth min 465-ft)
- Obstruction (auth min 470-ft)
- Obstruction (auth min 475-ft)
- Obstruction (auth min 480-ft)
- Obstruction (auth min 485-ft)
- Obstruction (auth min 490-ft)
- Obstruction (auth min 495-ft)
- Obstruction (auth min 500-ft)
- Obstruction (auth min 505-ft)
- Obstruction (auth min 510-ft)
- Obstruction (auth min 515-ft)
- Obstruction (auth min 520-ft)
- Obstruction (auth min 525-ft)
- Obstruction (auth min 530-ft)
- Obstruction (auth min 535-ft)
- Obstruction (auth min 540-ft)
- Obstruction (auth min 545-ft)
- Obstruction (auth min 550-ft)
- Obstruction (auth min 555-ft)
- Obstruction (auth min 560-ft)
- Obstruction (auth min 565-ft)
- Obstruction (auth min 570-ft)
- Obstruction (auth min 575-ft)
- Obstruction (auth min 580-ft)
- Obstruction (auth min 585-ft)
- Obstruction (auth min 590-ft)
- Obstruction (auth min 595-ft)
- Obstruction (auth min 600-ft)
- Obstruction (auth min 605-ft)
- Obstruction (auth min 610-ft)
- Obstruction (auth min 615-ft)
- Obstruction (auth min 620-ft)
- Obstruction (auth min 625-ft)
- Obstruction (auth min 630-ft)
- Obstruction (auth min 635-ft)
- Obstruction (auth min 640-ft)
- Obstruction (auth min 645-ft)
- Obstruction (auth min 650-ft)
- Obstruction (auth min 655-ft)
- Obstruction (auth min 660-ft)
- Obstruction (auth min 665-ft)
- Obstruction (auth min 670-ft)
- Obstruction (auth min 675-ft)
- Obstruction (auth min 680-ft)
- Obstruction (auth min 685-ft)
- Obstruction (auth min 690-ft)
- Obstruction (auth min 695-ft)
- Obstruction (auth min 700-ft)
- Obstruction (auth min 705-ft)
- Obstruction (auth min 710-ft)
- Obstruction (auth min 715-ft)
- Obstruction (auth min 720-ft)
- Obstruction (auth min 725-ft)
- Obstruction (auth min 730-ft)
- Obstruction (auth min 735-ft)
- Obstruction (auth min 740-ft)
- Obstruction (auth min 745-ft)
- Obstruction (auth min 750-ft)
- Obstruction (auth min 755-ft)
- Obstruction (auth min 760-ft)
- Obstruction (auth min 765-ft)
- Obstruction (auth min 770-ft)
- Obstruction (auth min 775-ft)
- Obstruction (auth min 780-ft)
- Obstruction (auth min 785-ft)
- Obstruction (auth min 790-ft)
- Obstruction (auth min 795-ft)
- Obstruction (auth min 800-ft)
- Obstruction (auth min 805-ft)
- Obstruction (auth min 810-ft)
- Obstruction (auth min 815-ft)
- Obstruction (auth min 820-ft)
- Obstruction (auth min 825-ft)
- Obstruction (auth min 830-ft)
- Obstruction (auth min 835-ft)
- Obstruction (auth min 840-ft)
- Obstruction (auth min 845-ft)
- Obstruction (auth min 850-ft)
- Obstruction (auth min 855-ft)
- Obstruction (auth min 860-ft)
- Obstruction (auth min 865-ft)
- Obstruction (auth min 870-ft)
- Obstruction (auth min 875-ft)
- Obstruction (auth min 880-ft)
- Obstruction (auth min 885-ft)
- Obstruction (auth min 890-ft)
- Obstruction (auth min 895-ft)
- Obstruction (auth min 900-ft)
- Obstruction (auth min 905-ft)
- Obstruction (auth min 910-ft)
- Obstruction (auth min 915-ft)
- Obstruction (auth min 920-ft)
- Obstruction (auth min 925-ft)
- Obstruction (auth min 930-ft)
- Obstruction (auth min 935-ft)
- Obstruction (auth min 940-ft)
- Obstruction (auth min 945-ft)
- Obstruction (auth min 950-ft)
- Obstruction (auth min 955-ft)
- Obstruction (auth min 960-ft)
- Obstruction (auth min 965-ft)
- Obstruction (auth min 970-ft)
- Obstruction (auth min 975-ft)
- Obstruction (auth min 980-ft)
- Obstruction (auth min 985-ft)
- Obstruction (auth min 990-ft)
- Obstruction (auth min 995-ft)
- Obstruction (auth min 1000-ft)

**Scale:** 1 inch = 250 feet

**Production Date:** 10 Aug 2015

**Survey Date:** 02 Jun 2015

**Project Reference Number:** 13300

**Survey Type:** Single-beam Condition Survey

**Scale:** 1 inch = 250 feet

**Projection:** NAD 1983 StatePlane South Carolina FIPS 3800 Feet

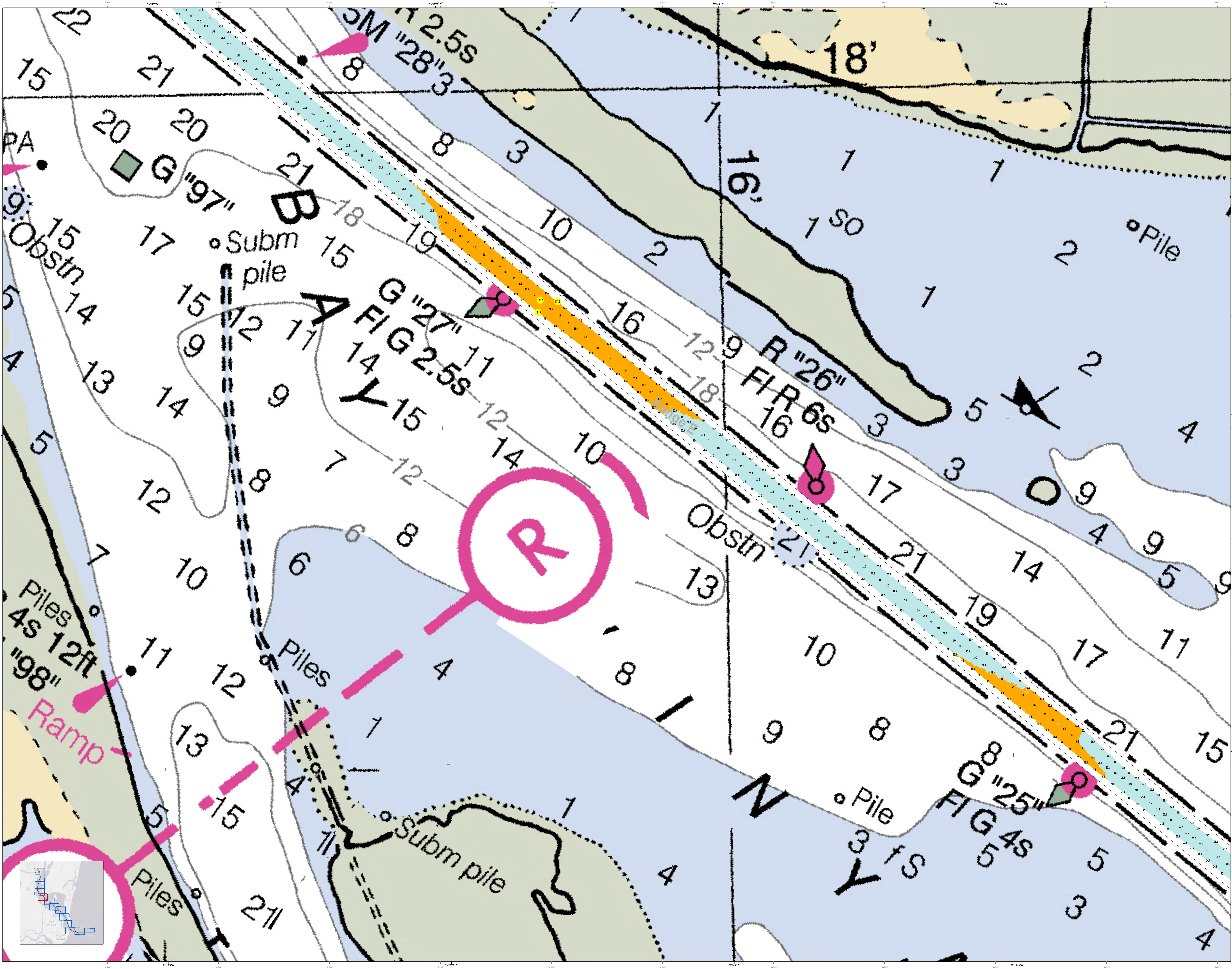
**U.S. Army Corps of Engineers**  
Charleston District  
Battalion, 2nd Branch  
3000 River Road  
Charleston, SC 29405  
CECAC/IS/USACE/ARMY/IL

**Georgetown, South Carolina**

**SHEET REFERENCE NUMBER:** C001

**SHEET 8 OF 13**





**Hydrographic Chart**  
This chart is a hydrographic chart of the Charleston Harbor Channel. It is based on the latest available hydrographic data and is subject to change without notice. It is not intended for navigation and should not be used for that purpose. It is intended for use as a reference only. The information on this chart is not guaranteed to be accurate and should not be relied upon for navigation. The information on this chart is not intended to be used for navigation. The information on this chart is not intended to be used for navigation.

**Scale**  
1 inch = 250 feet

**Legend**

- Obstruction
- Pile
- Subm pile
- Channel
- Bank
- Shoal
- Grass
- Rock
- Other

**Production Date:** 10 Aug 2015  
**Survey Date:** 02 Jun 2015  
**Project Reference Number:** 13000  
**Scale:** 1 inch = 250 feet  
**Projection:** NAD 1983 StatePlane South Carolina FIPS 3800 Feet

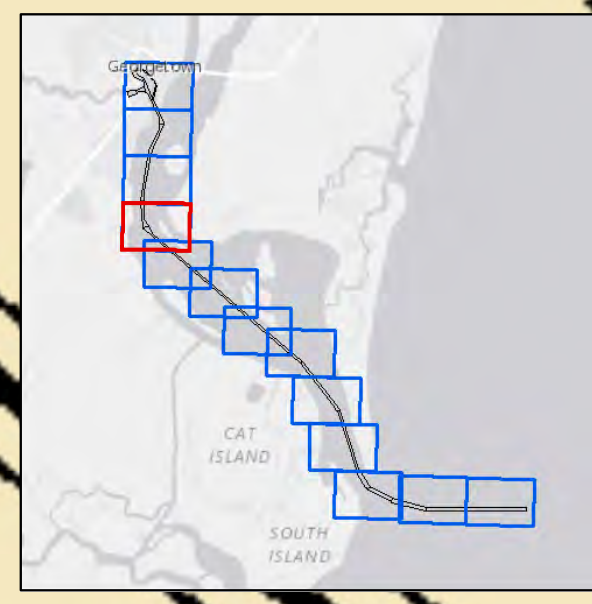
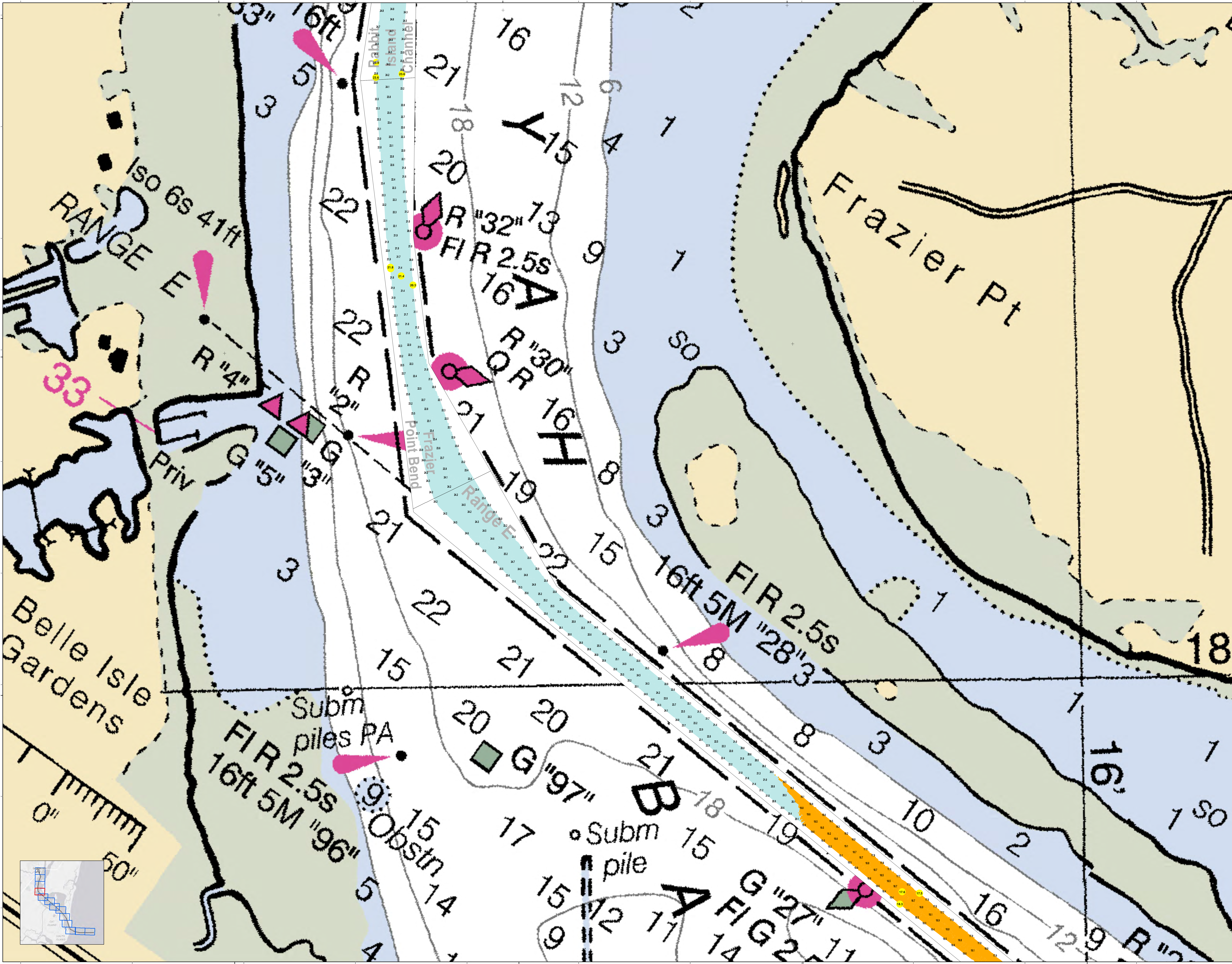
**Georgetown Harbor Channel Survey**  
The information depicted on this map represents the results of surveys made on the dates indicated and can only be considered as indicating the general location of obstructions. It is not intended to be used for navigation. The information on this chart is not intended to be used for navigation. The information on this chart is not intended to be used for navigation.

**U.S. Army Corps of Engineers**  
Charleston District  
Charleston, South Carolina  
Battalion 303  
Wilmington, North Carolina  
Charleston, South Carolina  
CESAC/IS/USACE/ARMY/IL

**Georgetown, South Carolina**  
SHEET REFERENCE NUMBER  
C001  
SHEET 9 OF 13







**U.S. Army Corps of Engineers**  
Charleston District

**Georgetown Harbor Channel Survey**  
The information depicted on this map represents the results of surveys made on the dates indicated and can only be considered as indicating the general nature of the data. It is not intended for navigation.  
Concluded on: 02 June 2015  
Georgetown, South Carolina

**Legend**

**Soundings**  
 0 to 10  
 11 to 20  
 21 to 30  
 31 to 40  
 41 to 50  
 51 to 60  
 61 to 70  
 71 to 80  
 81 to 90  
 91 to 100

**Obstructions**  
 Obstruction  
 Subm pile  
 Obstrn

**Survey Lines**  
 Survey Line  
 Range  
 Frazier Range  
 Rabbit Island Channel

**Other Symbols**  
 Iso 6s  
 Private  
 Belle Isle Gardens  
 Frazier Pt

**Scale**  
 0 125 250 500 750 Feet

**Production Data**  
 Survey Date: 02 Jun 2015  
 Production Date: 10 Aug 2015  
 Project Reference Number: 13000  
 Project Name: RABBIT ISLAND CHANNEL  
 Survey Type: Single-beam Condition Survey  
 Horizontal Scale: 1 inch = 250 feet  
 Vertical Scale: MAD 1983 StatePlane South Carolina FIPS 3800 Feet

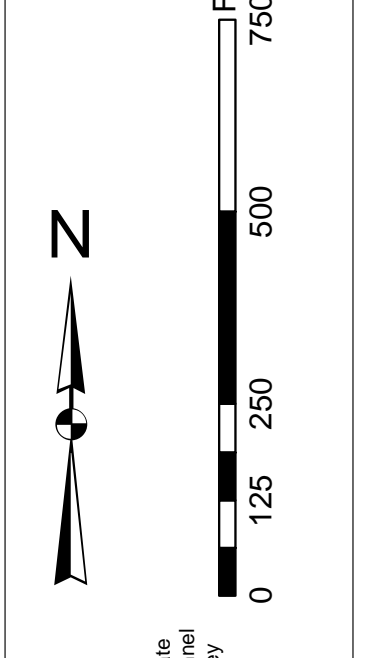
**U.S. Army Corps of Engineers**  
 CHARLESTON, SOUTH CAROLINA  
 BAYLOR BRANCH  
 814 HARGOOD AVE  
 CHARLESTON, SC 29405  
 CESAC/ISIB/USAGE ARMY/HL

**SHEET REFERENCE NUMBER**  
 C001  
 SHEET 10 OF 13



In accordance with the U.S. Army Corps of Engineers, Charleston District Office, Special Order 3800, the information depicted on this map represents the results of surveys made on the dates indicated and can only be considered as indicating the general character of the data. It is not intended to be used for navigation. The information is not intended to be used for navigation. The information is not intended to be used for navigation.

Vertical Datum: Mean Lower Low Water (MLLW)  
Horizontal Datum: North Carolina State Plane (NAD 83)



**Legend**

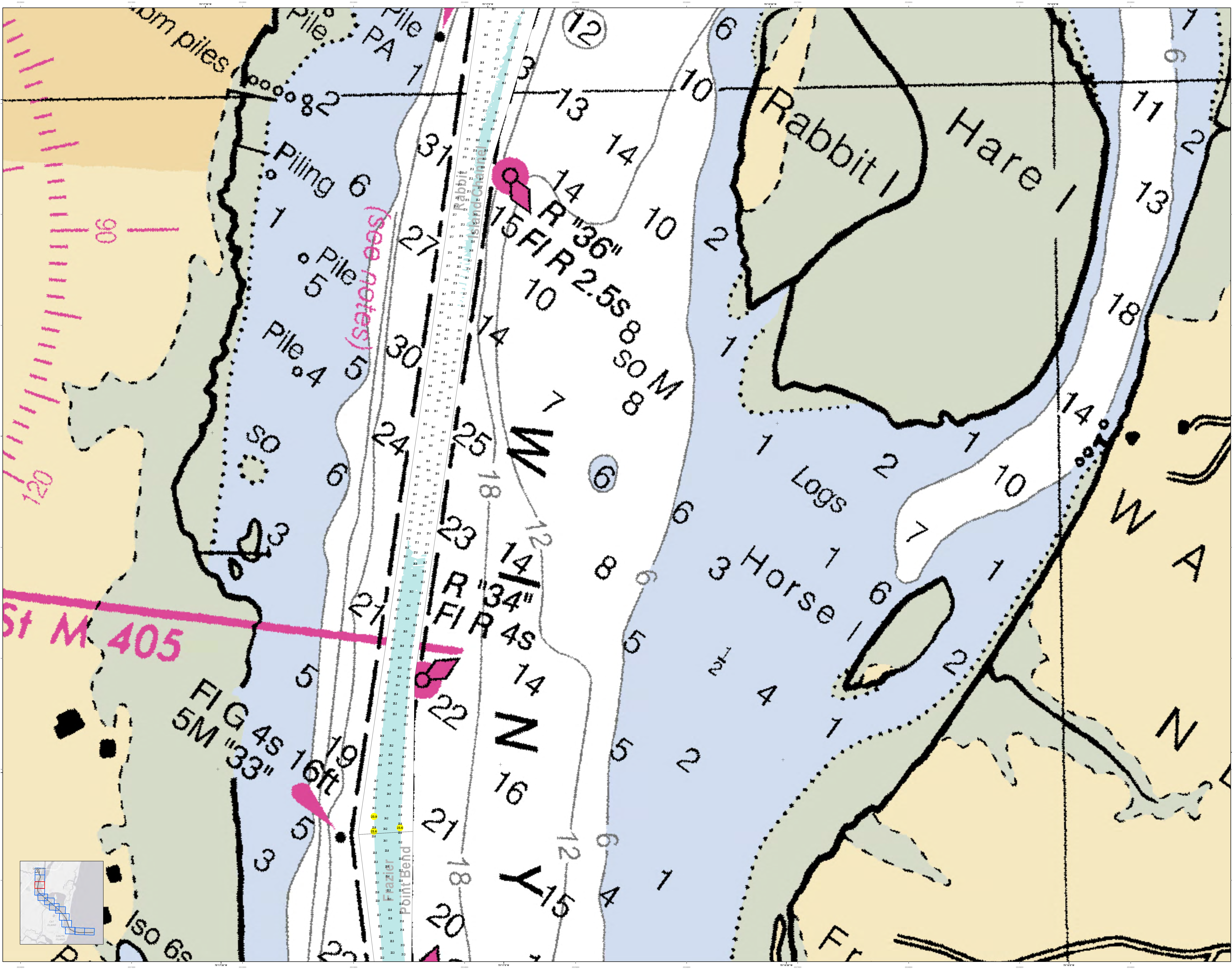
- Water**
  - 1 to 10 ft
  - 10 to 20 ft
  - 20 to 30 ft
  - 30 to 40 ft
  - 40 to 50 ft
  - 50 to 60 ft
  - 60 to 70 ft
  - 70 to 80 ft
  - 80 to 90 ft
  - 90 to 100 ft
  - 100 to 110 ft
  - 110 to 120 ft
  - 120 to 130 ft
  - 130 to 140 ft
  - 140 to 150 ft
  - 150 to 160 ft
  - 160 to 170 ft
  - 170 to 180 ft
  - 180 to 190 ft
  - 190 to 200 ft
  - 200 to 210 ft
  - 210 to 220 ft
  - 220 to 230 ft
  - 230 to 240 ft
  - 240 to 250 ft
  - 250 to 260 ft
  - 260 to 270 ft
  - 270 to 280 ft
  - 280 to 290 ft
  - 290 to 300 ft
  - 300 to 310 ft
  - 310 to 320 ft
  - 320 to 330 ft
  - 330 to 340 ft
  - 340 to 350 ft
  - 350 to 360 ft
  - 360 to 370 ft
  - 370 to 380 ft
  - 380 to 390 ft
  - 390 to 400 ft
  - 400 to 410 ft
  - 410 to 420 ft
  - 420 to 430 ft
  - 430 to 440 ft
  - 440 to 450 ft
  - 450 to 460 ft
  - 460 to 470 ft
  - 470 to 480 ft
  - 480 to 490 ft
  - 490 to 500 ft
- Structure**
  - 1. Bridge
  - 2. Dam
  - 3. Lock
  - 4. Pier
  - 5. Spillway
  - 6. Weir
  - 7. Causeway
  - 8. Jetty
  - 9. Shoal
  - 10. Bank
  - 11. Embankment
  - 12. Dike
  - 13. Wall
  - 14. Fence
  - 15. Other
- Other**
  - 1. Log
  - 2. Horse
  - 3. Rabbit
  - 4. Hare
  - 5. Other

<b>Designed by:</b>	U.S. Army Corps of Engineers	<b>Survey Date:</b>	02 Jun 2015	<b>Production Date:</b>	10 Aug 2015
<b>Reviewed by:</b>	U.S. Army Corps of Engineers	<b>Project Reference Number:</b>	13-000	<b>Project Reference Number:</b>	13-000
<b>Scale:</b>	1 inch = 250 feet	<b>Scale:</b>	1 inch = 250 feet	<b>Scale:</b>	1 inch = 250 feet
<b>Projection:</b>	NAD 83 StatePlane South Carolina FIPS 3800 Feet	<b>Projection:</b>	NAD 83 StatePlane South Carolina FIPS 3800 Feet	<b>Projection:</b>	NAD 83 StatePlane South Carolina FIPS 3800 Feet

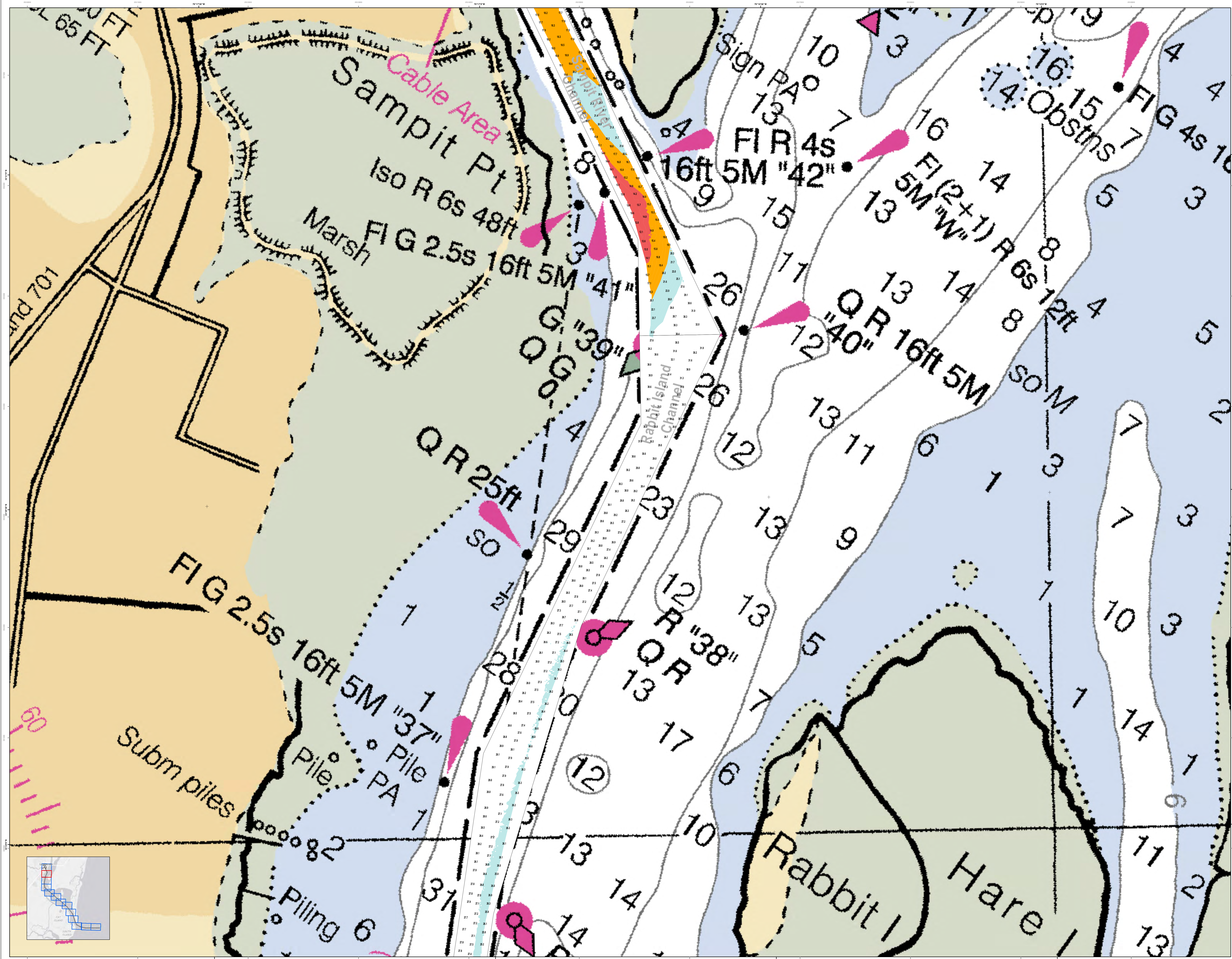
<b>U.S. Army Corps of Engineers</b>	<b>Charleston District</b>	<b>Georgetown Harbor Channel Survey</b>
<b>Charleston District</b>	<b>Georgetown Harbor Channel Survey</b>	<b>Georgetown, South Carolina</b>
<b>Charleston District</b>	<b>Georgetown Harbor Channel Survey</b>	<b>Georgetown, South Carolina</b>
<b>Charleston District</b>	<b>Georgetown Harbor Channel Survey</b>	<b>Georgetown, South Carolina</b>

**Georgetown Harbor Channel Survey**  
The information depicted on this map represents the results of surveys made on the dates indicated and can only be considered as indicating the general character of the data. It is not intended to be used for navigation. The information is not intended to be used for navigation.

Concluded on: 02 June 2015  
Georgetown, South Carolina







65 FT  
60 FT  
65 FT

701

FIG 2.5s 16ft 5M "37"

Subm piles

Piling 6

PA 1

PA 7

PA 8

PA 9

PA 10

PA 11

PA 12

PA 13

PA 14

PA 15

PA 16

PA 17

PA 18

PA 19

PA 20

PA 21

PA 22

PA 23

PA 24

PA 25

PA 26

PA 27

PA 28

PA 29

PA 30

PA 31

PA 32

PA 33

PA 34

PA 35

PA 36

PA 37

PA 38

PA 39

PA 40

PA 41

PA 42

PA 43

PA 44

PA 45

PA 46

PA 47

PA 48

PA 49

PA 50

PA 51

PA 52

PA 53

PA 54

PA 55

PA 56

PA 57

PA 58

PA 59

PA 60

PA 61

PA 62

PA 63

PA 64

PA 65

PA 66

PA 67

PA 68

PA 69

PA 70

PA 71

PA 72

PA 73

PA 74

PA 75

PA 76

PA 77

PA 78

PA 79

PA 80

PA 81

PA 82

PA 83

PA 84

PA 85

PA 86

PA 87

PA 88

PA 89

PA 90

PA 91

PA 92

PA 93

PA 94

PA 95

PA 96

PA 97

PA 98

PA 99

PA 100

U.S. Army Corps of Engineers  
Charleston District

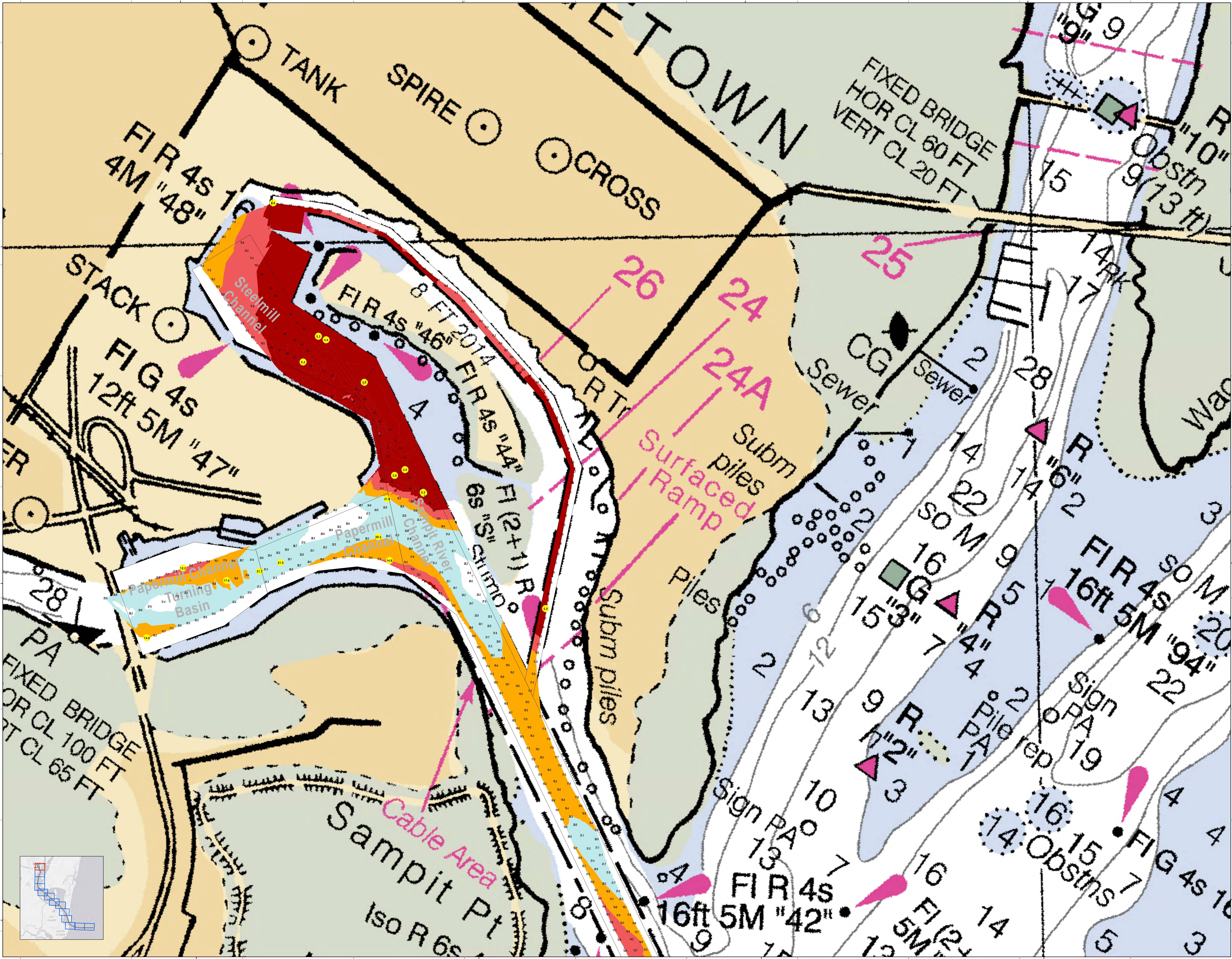
Georgetown Harbor Channel Survey  
The information depicted on this map represents the results of surveys made on the dates indicated and can only be considered as indicating the general character of the data upon which it is based.  
Concluded on: 02 June 2015  
Georgetown, South Carolina

Designed by:	Produced by:
U.S. Army Corps of Engineers Charleston District Charleston, South Carolina	U.S. Army Corps of Engineers Charleston District Charleston, South Carolina

Scale: 1 inch = 250 feet  
Projection: NAD 1983 StatePlane South Carolina FIPS 3800 Feet

Legend:  
Depth Soundings: 1, 2, 3, 4, 5, 6, 7, 8, 9, 10, 11, 12, 13, 14, 15, 16, 17, 18, 19, 20, 21, 22, 23, 24, 25, 26, 27, 28, 29, 30, 31, 32, 33, 34, 35, 36, 37, 38, 39, 40, 41, 42, 43, 44, 45, 46, 47, 48, 49, 50, 51, 52, 53, 54, 55, 56, 57, 58, 59, 60, 61, 62, 63, 64, 65, 66, 67, 68, 69, 70, 71, 72, 73, 74, 75, 76, 77, 78, 79, 80, 81, 82, 83, 84, 85, 86, 87, 88, 89, 90, 91, 92, 93, 94, 95, 96, 97, 98, 99, 100  
Obstructions: Obstrns 7  
Signs: Sign PAO 7  
Islands: Rabbit Island, Hare Island  
Marsh: Marsh  
Cable Area: Cable Area  
Subm Piles: Subm Piles  
Piling: Piling 6  
PA: PA 1 through PA 100





**U.S. Army Corps of Engineers**  
Charleston District

**Georgetown Harbor Channel Survey**  
The information depicted on this map represents the results of surveys made on the dates indicated and can only be considered as indicating the general location of the structures and obstructions shown. It is not intended to be used for navigation purposes. Concluded on: 02 June 2015  
Georgetown, South Carolina

**Production Date:** 10 Aug 2015  
**Survey Date:** 02 Jun 2015  
**Project Reference Number:** 13000  
**Scale:** 1 inch = 250 feet  
**Projection:** NAD 1983 StatePlane South Carolina FIPS 3800 Feet

**Designed by:** U.S. Army Corps of Engineers  
**Reviewed by:** U.S. Army Corps of Engineers  
**Scale:** 1 inch = 250 feet  
**Projection:** NAD 1983 StatePlane South Carolina FIPS 3800 Feet

**Legend:**

- Structure:** Steelmill Channel, Papermill Channel, Cable Area, etc.
- Obstruction:** Obstrn 1-16
- Survey Point:** FI R 4S, FIG 4S, etc.
- Bridge:** Fixed Bridge, etc.
- Other:** Tank, Spire, Cross, Stack, Iso R 6s, Sampit Pt, etc.

**Scale:** 0 125 250 500 750 Feet

**North Arrow:** N

**Sheet Reference Number:** C001  
**Sheet 13 of 13**