

Navigation safe water is marked by USCG outside federal navigation channel due to unsafe conditions resulting from channel shoaling. USACE is not responsible for areas outside of depicted Channel Reach.

SHEET REFERENCE NUMBER
C004
Page 1 of 2

Murrells Inlet Channel
The information depicted on this map represents the results of surveys made on the dates indicated and can only be considered as indicating the general conditions existing at that time.
Concluded on: **27 October 2014**
Murrells Inlet, South Carolina

U.S. ARMY ENGINEER DISTRICT CORPS OF ENGINEERS CHARLESTON, SOUTH CAROLINA	Designed by: eHydro Software v3.6.1	Design date: 31 Oct 2014	Export date: 05 Nov 2014
SPATIAL DATA BRANCH 69A HAGOOD AVE CHARLESTON, SC 29403 CESAC-GIS@USACE.ARMY.MIL	Reviewed by: J. West	Absolute scale: 1:6,000	Project Reference Number: CESAC-PRA-0040
	Reference scale: 1 inch = 500 feet	Survey Type: Single-beam Condition Survey	
	Projection: NAD 1983 StatePlane South Carolina FIPS 3900 Feet		

Shoalest Sounding
● Sounding
Sounding may cover several point areas and is calculated per reach quarter area
"±" indicates sounding above MLLW

USCG Beacon
■ Green
▲ Red
□ White

USCG Buoy
● Green
● Red
● Coast Guard Racon

○ White
○ Yellow
○ USCG Light

Depth in feet

Less than 5	5 to 7	7 to 9	9 to 12	Greater than 12
-------------	--------	--------	---------	-----------------

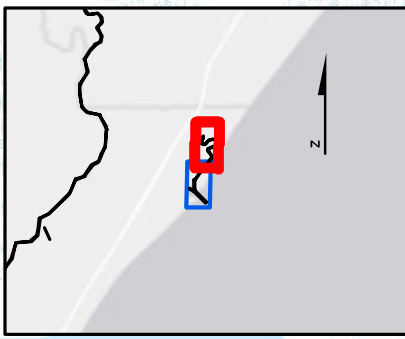
0 250 500 1,000 1,500 Feet

Production Notes:
1. The information depicted on this product is for plotting purposes only.
2. Vector hydrographic data derived from surveys conducted by the USACE and approved partners.
3. Soundings are in feet and refer to Mean Lower Low Water (MLLW).
4. Raster Background: ArcGIS Online Topographic BaseMap.

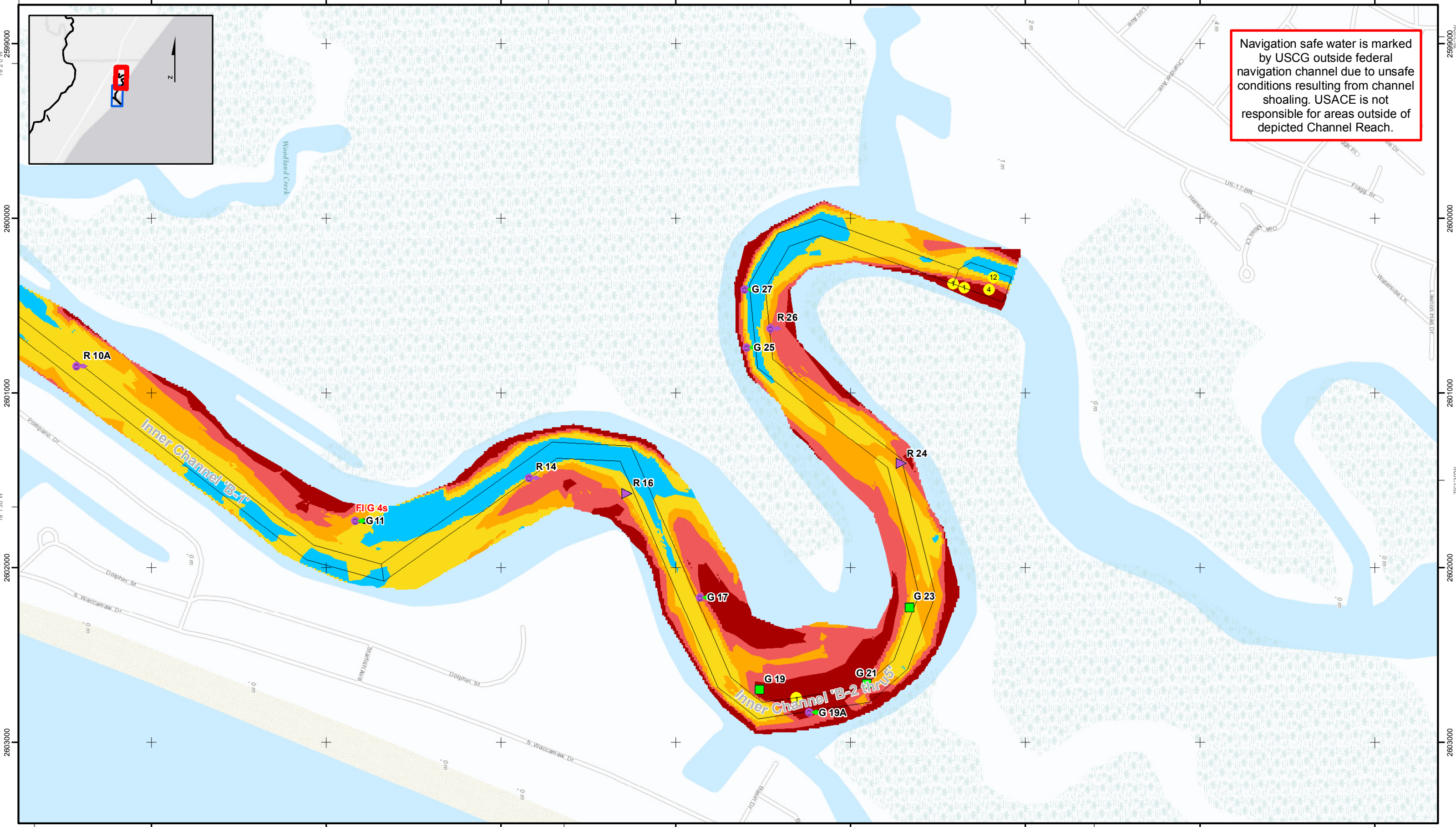
In no event shall the U.S. Army Corps of Engineers, Charleston District Office, Spatial Data Branch be liable for direct, indirect, incidental, consequential or special damages of any kind, including, but not limited to, loss of anticipated profits or benefits arising out of use of or reliance on the data.
These data sets have been developed from the best available sources. Although efforts have been made to ensure that the datasets are accurate and reliable, errors and variable conditions originating from physical sources used to develop the data may be reflected in the data supplied.
This product is not intended to be used for navigation.
Mariners are encouraged to use all prudent safety measures.

U.S. Army Corps of Engineers
Charleston District

33°32'30"N 628000 629000 630000 631000 632000 633000 634000 635000



Navigation safe water is marked by USCG outside federal navigation channel due to unsafe conditions resulting from channel shoaling. USACE is not responsible for areas outside of depicted Channel Reach.



33°32'30"N 628000 629000 630000 631000 632000 633000 634000 635000

Murrells Inlet Channel

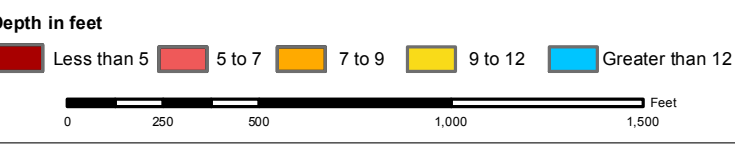
The information depicted on this map represents the results of surveys made on the dates indicated and can only be considered as indicating the general conditions existing at that time.

Concluded on: **27 October 2014**

Murrells Inlet, South Carolina

U.S. ARMY ENGINEER DISTRICT CORPS OF ENGINEERS CHARLESTON, SOUTH CAROLINA	Designed by: eHydro Software v3.6.1	Design date: 31 Oct 2014	Export date: 05 Nov 2014
SPATIAL DATA BRANCH 69A HAGOOD AVE CHARLESTON, SC 29403 CESAC-GIS@USACE.ARMY.MIL	Reviewed by: J. West	Absolute scale: 1:6,000	Project Reference Number: CESAC-PRA-0040
	Reference scale: 1 inch = 500 feet	Survey Type: Single-beam Condition Survey	
	Projection: NAD 1983 StatePlane South Carolina FIPS 3900 Feet		

Shoalest Sounding	USCG Beacon	USCG Buoy	White
● Sounding	■ Green	● Green	● White
<i>Sounding may cover several point areas and is calculated per reach quarter area</i>	▲ Red	● Red	● USCG Light
<i>"+" indicates sounding above MLLW</i>	□ White	● Coast Guard Racon	



Production Notes:

- The information depicted on this product is for plotting purposes only.
- Vector hydrographic data derived from surveys conducted by the USACE and approved partners.
- Soundings are in feet and refer to Mean Lower Low Water (MLLW).
- Raster Background: ArcGIS Online Topographic BaseMap.

In no event shall the U.S. Army Corps of Engineers, Charleston District Office, Spatial Data Branch be liable for direct, indirect, incidental, consequential or special damages of any kind, including, but not limited to, loss of anticipated profits or benefits arising out of use of or reliance on the data.

These data sets have been developed from the best available sources. Although efforts have been made to ensure that the datasets are accurate and reliable, errors and variable conditions originating from physical sources used to develop the data may be reflected in the data supplied.

This product is not intended to be used for navigation. Mariners are encouraged to use all prudent safety measures.