



SHEET
REFERENCE
NUMBER
C003
Page 1 of 25

**Atlantic Intercoastal Waterway (AIWW)
Channel Survey**
The information depicted on this map represents the results of surveys made on the dates indicated and can only be considered as indicating the general conditions existing at that time.
Concluded on: **Date**
Little River, SC to Bucksport, SC

U.S. ARMY ENGINEER DISTRICT
CORPS OF ENGINEERS
CHARLESTON, SOUTH CAROLINA
SPATIAL DATA BRANCH
69A HAGOOD AVE.
CHARLESTON, SC 29403
CESAC-GIS@USACE.ARMY.MIL

Designed By: eHydro Software v3.82	Survey Date: 01 DEC 2015	Production Date: 07 JAN 2016
Reviewed By: MZB	Absolute Scale: 1:6,000	Project Reference Number: CESAC-PRA-0001
Reference Scale: 1 inch = 500 feet	Survey Type: Condition	
Projection: NAD 1983 StatePlane South Carolina FIPS 3900 Feet		

Shoalest Sounding
● Sounding
Sounding may cover several point areas and is calculated per reach quarter area
"±" indicates sounding above MLLW

USCG Beacon
■ Green
▲ Red
□ White

USCG Buoy
● Green
● Red
● Coast Guard Racon

○ White
○ Yellow
○ USCG Light

Depth in feet

■ Less than 4 ■ 4 to 12 ■ Greater than 12

0 250 500 1,000 1,500 Feet



Production Notes:
1. The information depicted on this product is for plotting purposes only.
2. Vector hydrographic data derived from surveys conducted by the USACE and approved partners.
3. Soundings are in feet and refer to Mean Lower Low Water (MLLW).
4. Raster Background: ArcGIS Online Image Basemap.
In no event shall the U.S. Army Corps of Engineers, Charleston District Office, Spatial Data Branch be liable for direct, indirect, incidental, consequential or special damages of any kind, including, but not limited to, loss of anticipated profits or benefits arising out of use of or reliance on the data.
These data sets have been developed from the best available sources. Although efforts have been made to ensure that the datasets are accurate and reliable, errors and variable conditions originating from physical sources used to develop the data may be reflected in the data supplied.
This product is not intended to be used for navigation.
Mariners are encouraged to use all prudent safety measures.





SHEET
REFERENCE
NUMBER
C003
Page 2 of 25

**Atlantic Intercoastal Waterway (AIWW)
Channel Survey**
The information depicted on this map represents the results of surveys made on the dates indicated and can only be considered as indicating the general conditions existing at that time.
Concluded on: **Date**
Little River, SC to Bucksport, SC

U.S. ARMY ENGINEER DISTRICT
CORPS OF ENGINEERS
CHARLESTON, SOUTH CAROLINA
SPATIAL DATA BRANCH
69A HAGOOD AVE
CHARLESTON, SC 29403
CESAC-GIS@USACE.ARMY.MIL

Designed By: **eHydro Software v3.82**
Reviewed By: **MZB**
Reference Scale: **1 inch = 500 feet**
Projection: **NAD 1983 StatePlane South Carolina FIPS 3900 Feet**

Survey Date: **01 DEC 2015**
Production Date: **07 JAN 2016**
Project Reference Number: **CESAC-PRA-0001**
Survey Type: **Condition**

Shoalest Sounding
Sounding may cover several point areas and is calculated per reach quarter area
"±" indicates sounding above MLLW

Sounding	USCG Beacon Green	USCG Buoy Green	White
Sounding	USCG Beacon Red	USCG Buoy Red	Yellow
Sounding	USCG Beacon White	Coast Guard Racon	USCG Light

Depth in feet

Less than 4	4 to 12	Greater than 12
-------------	---------	-----------------

0 250 500 1,000 1,500 Feet



Production Notes:
1. The information depicted on this product is for plotting purposes only.
2. Vector hydrographic data derived from surveys conducted by the USACE and approved partners to Mean Lower Low Water (MLLW).
3. Soundings are in feet and refer to Mean Lower Low Water (MLLW).
4. Raster Background: ArcGIS Online Image Basemap.
This product is not intended to be used for navigation.

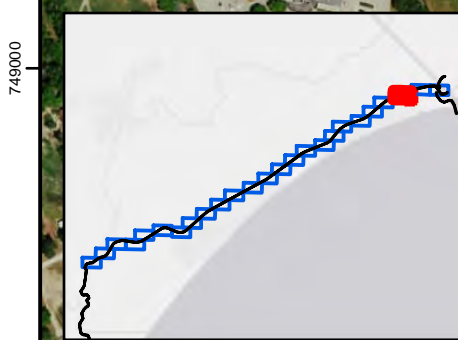
In no event shall the U.S. Army Corps of Engineers, Charleston District Office, Spatial Data Branch be liable for direct, indirect, incidental, consequential or special damages of any kind, including, but not limited to, loss of anticipated profits or benefits arising out of use of or reliance on the data.
These data sets have been developed from the best available sources. Although efforts have been made to ensure that the datasets are accurate and reliable, errors and variable conditions originating from physical sources used to develop the data may be reflected in the data supplied.
Mariners are encouraged to use all prudent safety measures.



2717000 2718000 2719000 2720000 2721000 2722000 2723000 2724000



2717000 2718000 2719000 2720000 2721000 2722000 2723000 2724000



749000 748000 747000 746000 745000

749000 748000 747000 746000 745000

Atlantic Intercoastal Waterway (AIWW) Channel Survey
 The information depicted on this map represents the results of surveys made on the dates indicated and can only be considered as indicating the general conditions existing at that time.
 Concluded on: **Date**
 Little River, SC to Bucksport, SC

U.S. ARMY ENGINEER DISTRICT
 CORPS OF ENGINEERS
 CHARLESTON, SOUTH CAROLINA
 SPATIAL DATA BRANCH
 68A HAGOOD AVE.
 CHARLESTON, SC 29403
 CESAC-GIS@USACE.ARMY.MIL

Designed By: eHydro Software v3.82	Survey Date: 01 DEC 2015	Production Date: 07 JAN 2016
Reviewed By: MZB	Absolute Scale: 1:6,000	Project Reference Number: CESAC-PRA-0001
Reference Scale: 1 inch = 500 feet	Survey Type: Condition	
Projection: NAD 1983 StatePlane South Carolina FIPS 3900 Feet		

Shoalest Sounding
 Sounding may cover several point areas and is calculated per reach quarter area
 "+" indicates sounding above MLLW

USCG Beacon
 Green
 Red

USCG Buoy
 Green
 Red
 Coast Guard Racon

White
 Yellow
 USCG Light

Depth in feet

Less than 4 4 to 12 Greater than 12

0 250 500 1,000 1,500

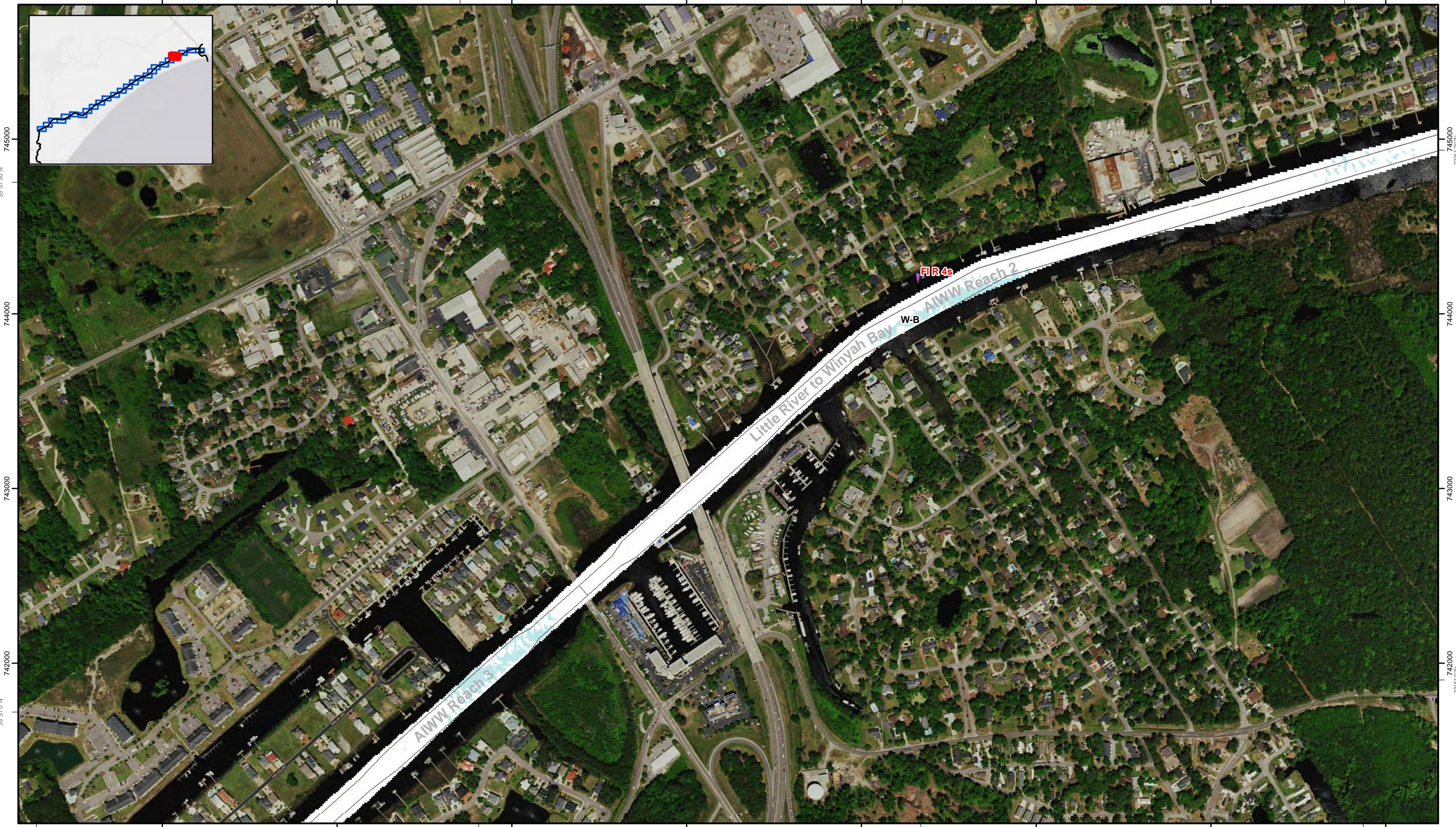


Production Notes:
 1. The information depicted on this product is for plotting purposes only.
 2. Vector hydrographic data derived from surveys conducted by the USACE and approved partners.
 3. Soundings are in feet and refer to Mean Lower Low Water (MLLW).
 4. Raster Background: ArcGIS Online Image Basemap.
 In no event shall the U.S. Army Corps of Engineers, Charleston District Office, Spatial Data Branch be liable for direct, indirect, incidental, consequential or special damages of any kind, including, but not limited to, loss of anticipated profits or benefits arising out of use of or reliance on the data.
 These data sets have been developed from the best available sources. Although efforts have been made to ensure that the datasets are accurate and reliable, errors and variable conditions originating from physical sources used to develop the data may be reflected in the data supplied.
 This product is not intended to be used for navigation.
 Mariners are encouraged to use all prudent safety measures.



SHEET REFERENCE NUMBER
C003
 Page 6 of 25

2709000 2710000 2711000 2712000 2713000 2714000 2715000 2716000



78°40'0"W
2709000
745000
744000
743000
742000
33°51'0"N

78°38'30"W
2716000
745000
744000
743000
742000
33°51'0"N

78°40'0"W
2709000
745000
744000
743000
742000
33°51'0"N

78°39'30"W
2711000
745000
744000
743000
742000
33°51'0"N

78°39'30"W
2711000
745000
744000
743000
742000
33°51'0"N

78°39'0"W
2712000
745000
744000
743000
742000
33°51'0"N

78°39'0"W
2713000
745000
744000
743000
742000
33°51'0"N

78°39'0"W
2714000
745000
744000
743000
742000
33°51'0"N

78°38'30"W
2715000
745000
744000
743000
742000
33°51'0"N

78°38'30"W
2716000
745000
744000
743000
742000
33°51'0"N

Atlantic Intercoastal Waterway (AIWW) Channel Survey
The information depicted on this map represents the results of surveys made on the dates indicated and can only be considered as indicating the general conditions existing at that time.
Concluded on: **Date**
Little River, SC to Bucksport, SC

U.S. ARMY ENGINEER DISTRICT
CORPS OF ENGINEERS
CHARLESTON, SOUTH CAROLINA

SPATIAL DATA BRANCH
69A HAGOOD AVE
CHARLESTON, SC 29403
CESAC-GIS@USACE.ARMY.MIL

Designed By: **eHydro Software v3.82**
Reviewed By: **MZB**
Reference Scale: **1 inch = 500 feet**
Projection: **NAD 1983 StatePlane South Carolina FIPS 3900 Feet**

Survey Date: **01 DEC 2015**
Production Date: **07 JAN 2016**
Project Reference Number: **CESAC-PRA-0001**
Survey Type: **Condition**

Shoalest Sounding
Sounding
Sounding may cover several point areas and is calculated per reach quarter area
"+ " indicates sounding above MLLW

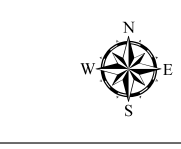
USCG Beacon
Green
White

USCG Buoy
Green
Red
Coast Guard Racon

White
Yellow
USCG Light

Depth in feet
Less than 4
4 to 12
Greater than 12

0 250 500 1,000 1,500 Feet



Production Notes:
1. The information depicted on this product is for plotting purposes only.
2. Vector hydrographic data derived from surveys conducted by the USACE and approved partners.
3. Soundings are in feet and refer to Mean Lower Low Water (MLLW).
4. Raster Background: ArcGIS Online Image Basemap.

In no event shall the U.S. Army Corps of Engineers, Charleston District Office, Spatial Data Branch be liable for direct, indirect, incidental, consequential or special damages of any kind, including, but not limited to, loss of anticipated profits or benefits arising out of use of or reliance on the data.
These data sets have been developed from the best available sources. Although efforts have been made to ensure that the datasets are accurate and reliable, errors and variable conditions originating from physical sources used to develop the data may be reflected in the data supplied.
This product is not intended to be used for navigation.
Mariners are encouraged to use all prudent safety measures.



SHEET
REFERENCE
NUMBER
C003
Page 4 of 25



SHEET REFERENCE NUMBER
C003
 Page 6 of 25

Atlantic Intercoastal Waterway (AIWW) Channel Survey
 The information depicted on this map represents the results of surveys made on the dates indicated and can only be considered as indicating the general conditions existing at that time.
 Concluded on: **Date**
 Little River, SC to Bucksport, SC

U.S. ARMY ENGINEER DISTRICT CORPS OF ENGINEERS CHARLESTON, SOUTH CAROLINA SPATIAL DATA BRANCH 69A HAGOOD AVE CHARLESTON, SC 29403 CESAC-GIS@USACE.ARMY.MIL	Designed By: eHydro Software v3.82 Reviewed By: MZB Reference Scale: 1 inch = 500 feet Projection: NAD 1983 StatePlane South Carolina FIPS 3900 Feet	Survey Date: 01 DEC 2015 Project Reference Number: CESAC-PRA-0001 Survey Type: Condition	Production Date: 07 JAN 2016
--	---	---	-------------------------------------

Shoalest Sounding
 Sounding
Sounding may cover several point areas and is calculated per reach quarter area
 "+" indicates sounding above MLLW

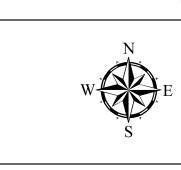
USCG Beacon
 Green
 Red
 White

USCG Buoy
 Green
 Red
 Coast Guard Racon

White
 Yellow
 USCG Light

Depth in feet
 Less than 4
 4 to 12
 Greater than 12

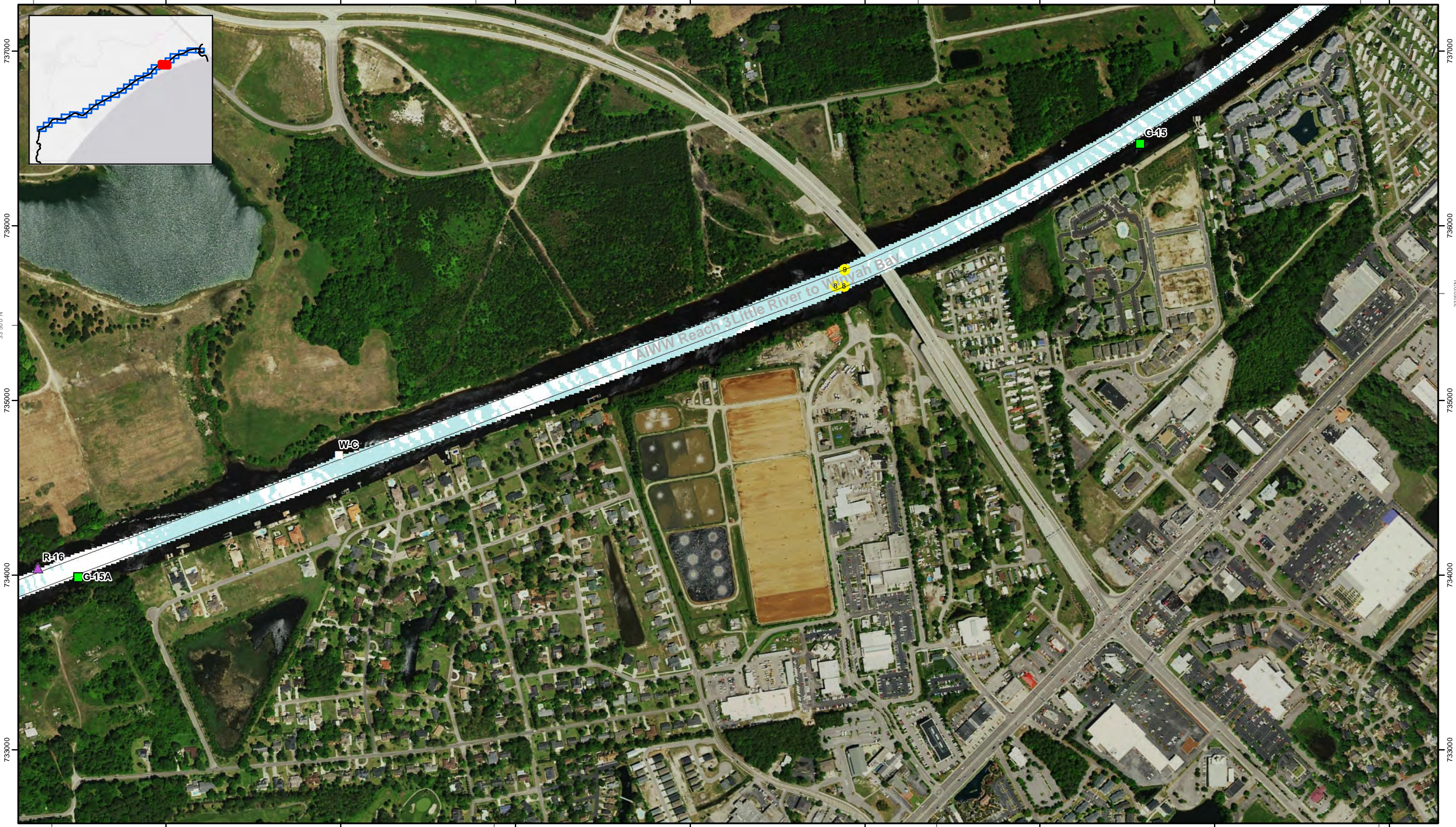
0 250 500 1,000 1,500 Feet



Production Notes:
 1. The information depicted on this product is for plotting purposes only.
 2. Vector hydrographic data derived from surveys conducted by the USACE and approved partners.
 3. Soundings are in feet and refer to Mean Lower Low Water (MLLW).
 4. Raster Background: ArcGIS Online Image Basemap.
 In no event shall the U.S. Army Corps of Engineers, Charleston District Office, Spatial Data Branch be liable for direct, indirect, incidental, consequential or special damages of any kind, including, but not limited to, loss of anticipated profits or benefits arising out of use of or reliance on the data.
 These data sets have been developed from the best available sources. Although efforts have been made to ensure that the datasets are accurate and reliable, errors and variable conditions originating from physical sources used to develop the data may be reflected in the data supplied.
 This product is not intended to be used for navigation.
 Mariners are encouraged to use all prudent safety measures.



78°42'0"W 2699000 2700000 2701000 2702000 2703000 2704000 2705000 2706000



78°42'0"W 2699000 2700000 2701000 2702000 2703000 2704000 2705000 2706000

78°42'0"W
Page 6 of 25
SHEET
REFERENCE
NUMBER
C003

Atlantic Intercoastal Waterway (AIWW) Channel Survey
The information depicted on this map represents the results of surveys made on the dates indicated and can only be considered as indicating the general conditions existing at that time.
Concluded on: **Date**
Little River, SC to Bucksport, SC

Designed By: eHydro Software v3.82	Survey Date: 01 DEC 2015	Production Date: 07 JAN 2016
Reviewed By: MZB	Absolute Scale: 1:6,000	Project Reference Number: CESAC-PRA-0001
Reference Scale: 1 inch = 500 feet	Survey Type: Condition	
Projection: NAD 1983 StatePlane South Carolina FIPS 3900 Feet		

Shoalest Sounding
Sounding may cover several point areas and is calculated per reach quarter area
"+ " indicates sounding above MLLW

USCG Beacon
Green
White

USCG Buoy
Green
Red
Coast Guard Racon

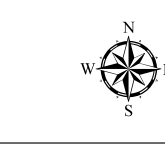
White
USCG Light

Depth in feet

Less than 4 4 to 12 Greater than 12

0 250 500 1,000 1,500

Feet



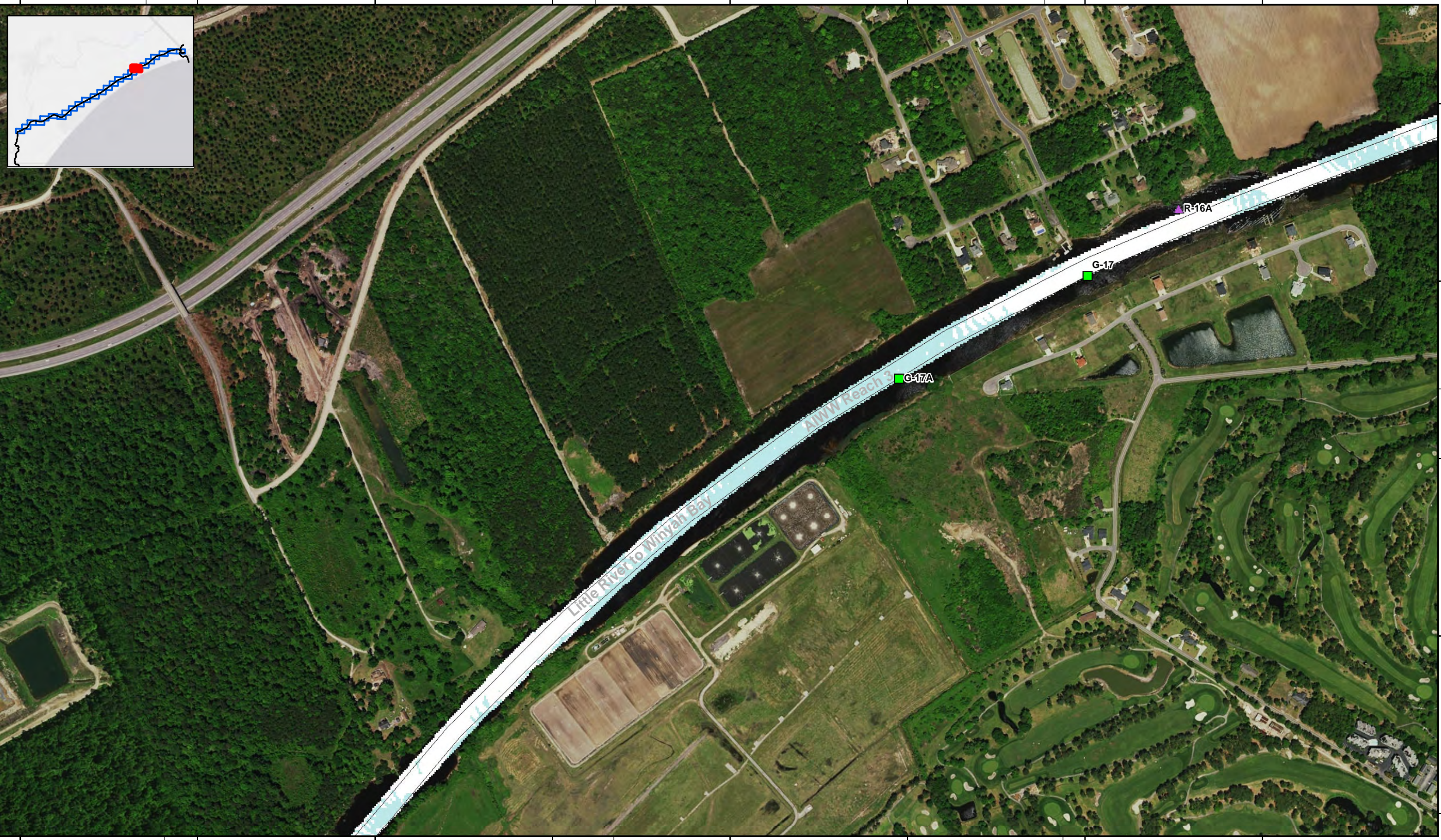
Production Notes:

- The information depicted on this product is for plotting purposes only.
- Vector hydrographic data derived from surveys conducted by the USACE and approved partners.
- Soundings are in feet and refer to Mean Lower Low Water (MLLW).
- Raster Background: ArcGIS Online Image Basemap.

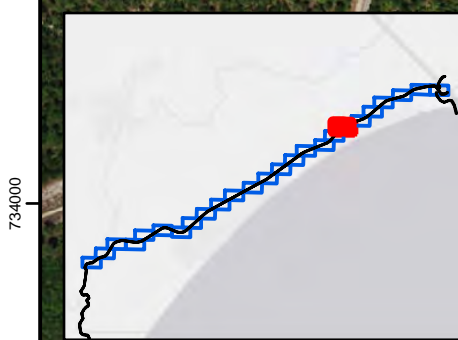
In no event shall the U.S. Army Corps of Engineers, Charleston District Office, Spatial Data Branch be liable for direct, indirect, incidental, consequential or special damages of any kind, including, but not limited to, loss of anticipated profits or benefits arising out of use of or reliance on the data.
These data sets have been developed from the best available sources. Although efforts have been made to ensure that the datasets are accurate and reliable, errors and variable conditions originating from physical sources used to develop the data may be reflected in the data supplied.
This product is not intended to be used for navigation.
Mariners are encouraged to use all prudent safety measures.



2690000 78°43'30"W 2691000 2692000 2693000 78°43'0"W 2694000 2695000 78°42'30"W 2696000 2697000 2698000



2690000 78°43'30"W 2691000 2692000 2693000 78°43'0"W 2694000 2695000 78°42'30"W 2696000 2697000 2698000



SHEET
REFERENCE
NUMBER
C003
Page 7 of 25

Atlantic Intercoastal Waterway (AIWW) Channel Survey
The information depicted on this map represents the results of surveys made on the dates indicated and can only be considered as indicating the general conditions existing at that time.
Concluded on: **Date**
Little River, SC to Bucksport, SC

U.S. ARMY ENGINEER DISTRICT
CORPS OF ENGINEERS
CHARLESTON, SOUTH CAROLINA
SPATIAL DATA BRANCH
68A HAGOOD AVE
CHARLESTON, SC 29403
CESAC-GIS@USACE.ARMY.MIL

Designed By: eHydro Software v3.82	Survey Date: 01 DEC 2015	Production Date: 07 JAN 2016
Reviewed By: MZB	Absolute Scale: 1:6,000	Project Reference Number: CESAC-PRA-0001
Reference Scale: 1 inch = 500 feet	Survey Type: Condition	
Projection: NAD 1983 StatePlane South Carolina FIPS 3900 Feet		

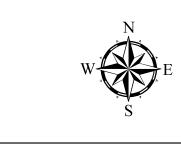
Shoalest Sounding
Sounding may cover several point areas and is calculated per reach quarter area
"+ " indicates sounding above MLLW

● Sounding	■ Green	● Green	● White
▲ Red	▲ White	● Red	● Yellow
● Coast Guard Racon	● USCG Light		

Depth in feet

■ Less than 4	■ 4 to 12	■ Greater than 12
---------------	-----------	-------------------

0 250 500 1,000 1,500 Feet



Production Notes:
1. The information depicted on this product is for plotting purposes only.
2. Vector hydrographic data derived from surveys conducted by the USACE and approved partners to Mean Lower Low Water (MLLW).
3. Soundings are in feet and refer to Mean Lower Low Water (MLLW).
4. Raster Background: ArcGIS Online Image Basemap.
In no event shall the U.S. Army Corps of Engineers, Charleston District Office, Spatial Data Branch be liable for direct, indirect, incidental, consequential or special damages of any kind, including, but not limited to, loss of anticipated profits or benefits arising out of use of or reliance on the data.
These data sets have been developed from the best available sources. Although efforts have been made to ensure that the datasets are accurate and reliable, errors and variable conditions originating from physical sources used to develop the data may be reflected in the data supplied.
This product is not intended to be used for navigation.
Mariners are encouraged to use all prudent safety measures.



2687000 2688000 78°44'0"W 2689000 2690000 78°43'30"W 2691000 2692000 2693000 78°43'0"W 2694000



Atlantic Intercoastal Waterway (AIWW) Channel Survey
 The information depicted on this map represents the results of surveys made on the dates indicated and can only be considered as indicating the general conditions existing at that time.
 Concluded on: Date
 Little River, SC to Bucksport, SC

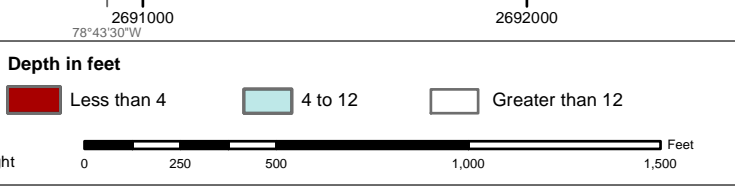
U.S. ARMY ENGINEER DISTRICT CORPS OF ENGINEERS CHARLESTON, SOUTH CAROLINA	Designed By: eHydro Software v3.82	Survey Date: 01 DEC 2015	Production Date: 07 JAN 2016
SPATIAL DATA BRANCH 69A HAGOOD AVE CHARLESTON, SC 29403 CESAC-GIS@USACE.ARMY.MIL	Reviewed By: MZB	Project Reference Number: CESAC-PRA-0001	Survey Type: Condition
	Reference Scale: 1 inch = 500 feet	Projection: NAD 1983 StatePlane South Carolina FIPS 3900 Feet	

Shoalest Sounding
 Sounding may cover several point areas and is calculated per reach quarter area
 "+" indicates sounding above MLLW

USCG Beacon
 Green
 Red
 White

USCG Buoy
 Green
 Red
 Coast Guard Racon

USCG Light
 White
 Yellow



Production Notes:

- The information depicted on this product is for plotting purposes only.
- Vector hydrographic data derived from surveys conducted by the USACE and approved partners.
- Soundings are in feet and refer to Mean Lower Low Water (MLLW).
- Raster Background: ArcGIS Online Image Basemap.

In no event shall the U.S. Army Corps of Engineers, Charleston District Office, Spatial Data Branch be liable for direct, indirect, incidental, consequential or special damages of any kind, including, but not limited to, loss of anticipated profits or benefits arising out of use of or reliance on the data.

These data sets have been developed from the best available sources. Although efforts have been made to ensure that the datasets are accurate and reliable, errors and variable conditions originating from physical sources used to develop the data may be reflected in the data supplied.

This product is not intended to be used for navigation.
 Mariners are encouraged to use all prudent safety measures.

U.S. Army Corps of Engineers
 Charleston District

SHEET REFERENCE NUMBER
C003
 Page 6 of 25

2683000 78°45'0"W 2684000 2685000 2686000 2687000 2688000 2689000 2690000



SHEET REFERENCE NUMBER
C003
Page 9 of 25

Atlantic Intercoastal Waterway (AIWW) Channel Survey
The information depicted on this map represents the results of surveys made on the dates indicated and can only be considered as indicating the general conditions existing at that time.
Concluded on: **Date**
Little River, SC to Bucksport, SC

U.S. ARMY ENGINEER DISTRICT CORPS OF ENGINEERS CHARLESTON, SOUTH CAROLINA	Designed By: eHydro Software v3.82	Survey Date: 01 DEC 2015	Production Date: 07 JAN 2016
SPATIAL DATA BRANCH 69A HAGOOD AVE. CHARLESTON, SC 29403 CESAC-GIS@USACE.ARMY.MIL	Reviewed By: MZB	Absolute Scale: 1:6,000	Project Reference Number: CESAC-PRA-0001
	Reference Scale: 1 inch = 500 feet	Survey Type: Condition	
	Projection: NAD 1983 StatePlane South Carolina FIPS 3900 Feet		

Shoalest Sounding
Sounding may cover several point areas and is calculated per reach quarter area
"±" indicates sounding above MLLW

USCG Beacon
Green
White

USCG Buoy
Green
Red
Coast Guard Racon

White
Yellow
USCG Light

Depth in feet

Less than 4	4 to 12	Greater than 12
-------------	---------	-----------------

0 250 500 1,000 1,500 Feet

Production Notes:

- The information depicted on this product is for plotting purposes only
- Vector hydrographic data derived from surveys conducted by the USACE and approved partners
- Soundings are in feet and refer to Mean Lower Low Water (MLLW)
- Raster Background: ArcGIS Online Image Basemap

In no event shall the U.S. Army Corps of Engineers, Charleston District Office, Spatial Data Branch be liable for direct, indirect, incidental, consequential or special damages of any kind, including, but not limited to, loss of anticipated profits or benefits arising out of use of or reliance on the data.
These data sets have been developed from the best available sources. Although efforts have been made to ensure that the datasets are accurate and reliable, errors and variable conditions originating from physical sources used to develop the data may be reflected in the data supplied.
This product is not intended to be used for navigation.
Mariners are encouraged to use all prudent safety measures.





SHEET REFERENCE NUMBER C003 Page 10 of 25	Atlantic Intercoastal Waterway (AIWW) Channel Survey The information depicted on this map represents the results of surveys made on the dates indicated and can only be considered as indicating the general conditions existing at that time. Concluded on: Date Little River, SC to Bucksport, SC		
	U.S. ARMY ENGINEER DISTRICT CORPS OF ENGINEERS CHARLESTON, SOUTH CAROLINA SPATIAL DATA BRANCH 69A HAGOOD AVE CHARLESTON, SC 29403 CESAC-GIS@USACE.ARMY.MIL	Designed By: eHydro Software v3.82 Reviewed By: MZB Reference Scale: 1 inch = 500 feet Projection: NAD 1983 StatePlane South Carolina FIPS 3900 Feet	Survey Date: 01 DEC 2015 Project Reference Number: CESAC-PRA-0001 Survey Type: Condition
	Production Date: 07 JAN 2016 Absolute Scale: 1:6,000		
	Survey Date: 01 DEC 2015 Project Reference Number: CESAC-PRA-0001 Survey Type: Condition		

Shoalest Sounding
 Sounding may cover several point areas and is calculated per reach quarter area
 "+" indicates sounding above MLLW

● Sounding	■ Green USCG Beacon	● Green USCG Buoy	○ White USCG Light
● Yellow Sounding	■ Red USCG Beacon	● Red USCG Buoy	○ Purple USCG Light
● Coast Guard Racon			

Depth in feet

■ Less than 4	■ 4 to 12	■ Greater than 12
---------------	-----------	-------------------

0 250 500 1,000 1,500 Feet

Production Notes:

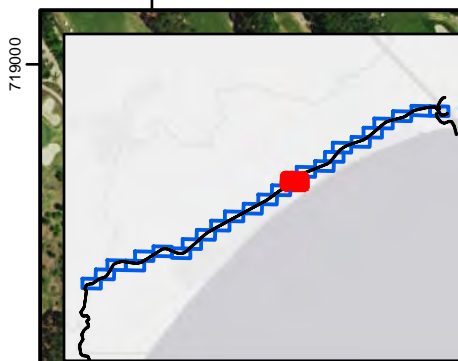
- The information depicted on this product is for plotting purposes only.
- Vector hydrographic data derived from surveys conducted by the USACE and approved partners.
- Soundings are in feet and refer to Mean Lower Low Water (MLLW).
- Raster Background: ArcGIS Online Image Basemap.

In no event shall the U.S. Army Corps of Engineers, Charleston District Office, Spatial Data Branch be liable for direct, indirect, incidental, consequential or special damages of any kind, including, but not limited to, loss of anticipated profits or benefits arising out of use of or reliance on the data.

These data sets have been developed from the best available sources. Although efforts have been made to ensure that the datasets are accurate and reliable, errors and variable conditions originating from physical sources used to develop the data may be reflected in the data supplied.

This product is not intended to be used for navigation. Mariners are encouraged to use all prudent safety measures.

2669000 2670000 2671000 2672000 2673000 2674000 2675000 2676000 78°47'30"W 78°47'0"W 78°46'30"W



33°47'0"N

718000

717000

716000

715000

719000

718000

717000

716000

715000

2669000 2670000 2671000 2672000 2673000 2674000 2675000 2676000 78°47'30"W 78°47'0"W 78°46'30"W

SHEET REFERENCE NUMBER
C003
Page 11 of 25

Atlantic Intercoastal Waterway (AIWW) Channel Survey
The information depicted on this map represents the results of surveys made on the dates indicated and can only be considered as indicating the general conditions existing at that time.
Concluded on: **Date**
Little River, SC to Bucksport, SC

U.S. ARMY ENGINEER DISTRICT
CORPS OF ENGINEERS
CHARLESTON, SOUTH CAROLINA
SPATIAL DATA BRANCH
69A HAGOOD AVE
CHARLESTON, SC 29403
CESAC-GIS@USACE.ARMY.MIL

Designed By: eHydro Software v3.82	Survey Date: 01 DEC 2015	Production Date: 07 JAN 2016
Reviewed By: MZB	Absolute Scale: 1:6,000	Project Reference Number: CESAC-PRA-0001
Reference Scale: 1 inch = 500 feet	Survey Type: Condition	
Projection: NAD 1983 StatePlane South Carolina FIPS 3900 Feet		

Shoalest Sounding
Sounding may cover several point areas and is calculated per reach quarter area
"+" indicates sounding above MLLW

USCG Beacon
Green
Red
White

USCG Buoy
Green
Red
Coast Guard Racon

USCG Light
White
Yellow

Depth in feet

Less than 4 4 to 12 Greater than 12

0 250 500 1,000 1,500



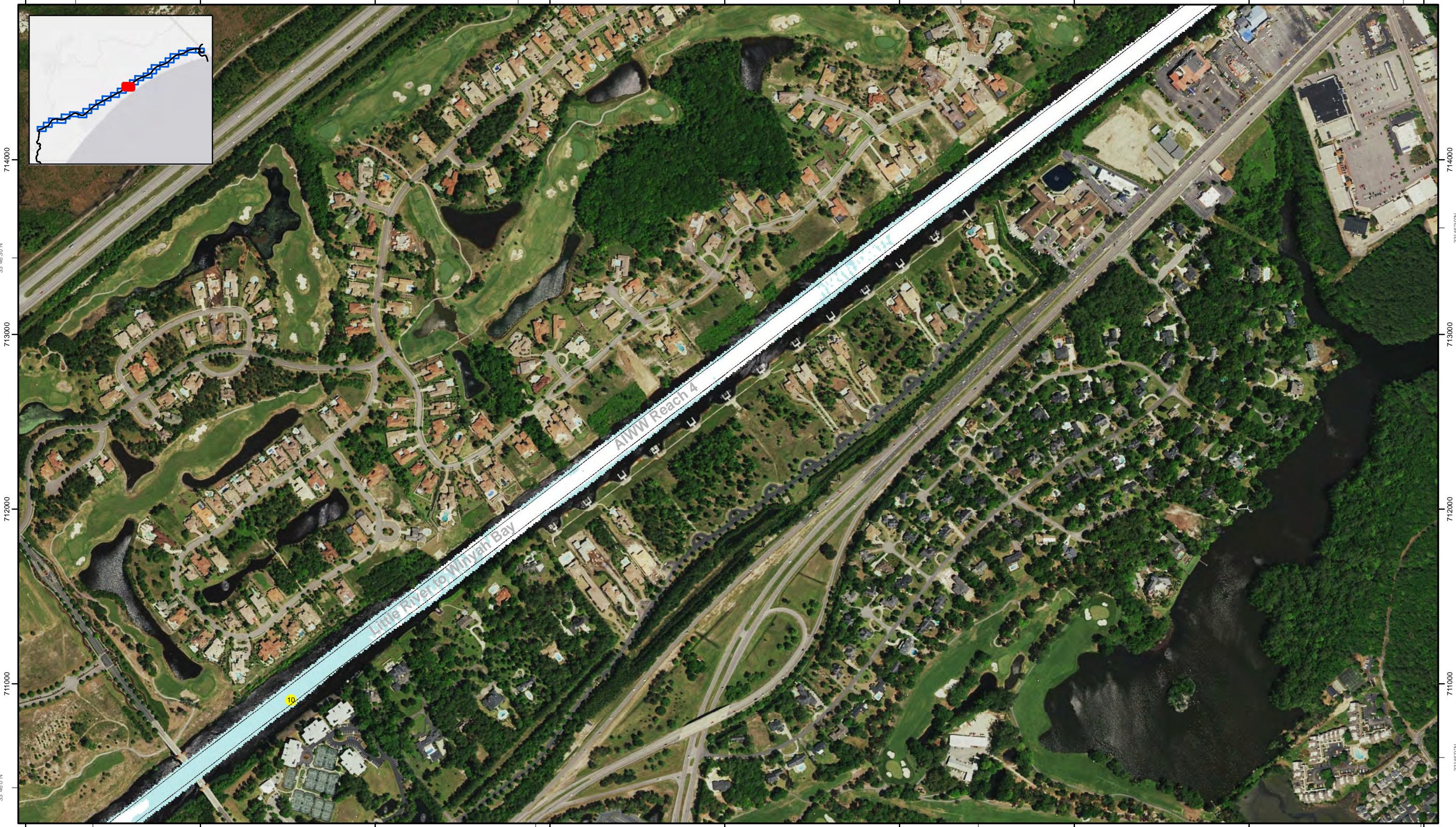
Production Notes:

- The information depicted on this product is for plotting purposes only
- Vector hydrographic data derived from surveys conducted by the USACE and approved partners
- Soundings are in feet and refer to Mean Lower Low Water (MLLW)
- Raster Background: ArcGIS Online Image Basemap

In no event shall the U.S. Army Corps of Engineers, Charleston District Office, Spatial Data Branch be liable for direct, indirect, incidental, consequential or special damages of any kind, including, but not limited to, loss of anticipated profits or benefits arising out of use of or reliance on the data.
These data sets have been developed from the best available sources. Although efforts have been made to ensure that the datasets are accurate and reliable, errors and variable conditions originating from physical sources used to develop the data may be reflected in the data supplied.
This product is not intended to be used for navigation.
Mariners are encouraged to use all prudent safety measures.



2663000 78°49'0"W 2664000 2665000 78°48'30"W 2666000 2667000 2668000 78°48'0"W 2669000 2670000 2671000 78°47'30"W



2663000 78°49'0"W 2664000 2665000 2666000 2667000 2668000 78°48'0"W 2669000 2670000 2671000 78°47'30"W

SHEET
REFERENCE
NUMBER
C003
Page 12 of 25

Atlantic Intercoastal Waterway (AIWW) Channel Survey
The information depicted on this map represents the results of surveys made on the dates indicated and can only be considered as indicating the general conditions existing at that time.
Concluded on: **Date**
Little River, SC to Bucksport, SC

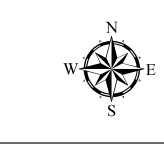
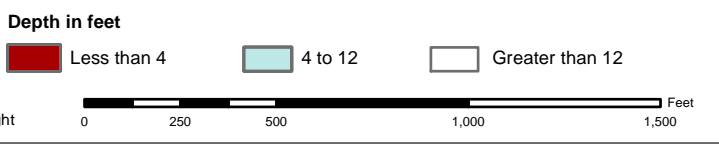
U.S. ARMY ENGINEER DISTRICT
CORPS OF ENGINEERS
CHARLESTON, SOUTH CAROLINA
SPATIAL DATA BRANCH
68A HAGOOD AVE
CHARLESTON, SC 29403
CESAC-GIS@USACE.ARMY.MIL

Designed By: **eHydro Software v3.82**
Reviewed By: **MZB**
Reference Scale: **1 inch = 500 feet**
Projection: **NAD 1983 StatePlane South Carolina FIPS 3900 Feet**

Survey Date: **01 DEC 2015**
Production Date: **07 JAN 2016**
Project Reference Number: **CESAC-PRA-0001**
Survey Type: **Condition**

Shoalest Sounding
Sounding may cover several point areas and is calculated per reach quarter area
"±" indicates sounding above MLLW

- USCG Beacon Green
- USCG Buoy Red
- Coast Guard Racon
- White
- Yellow
- USCG Light

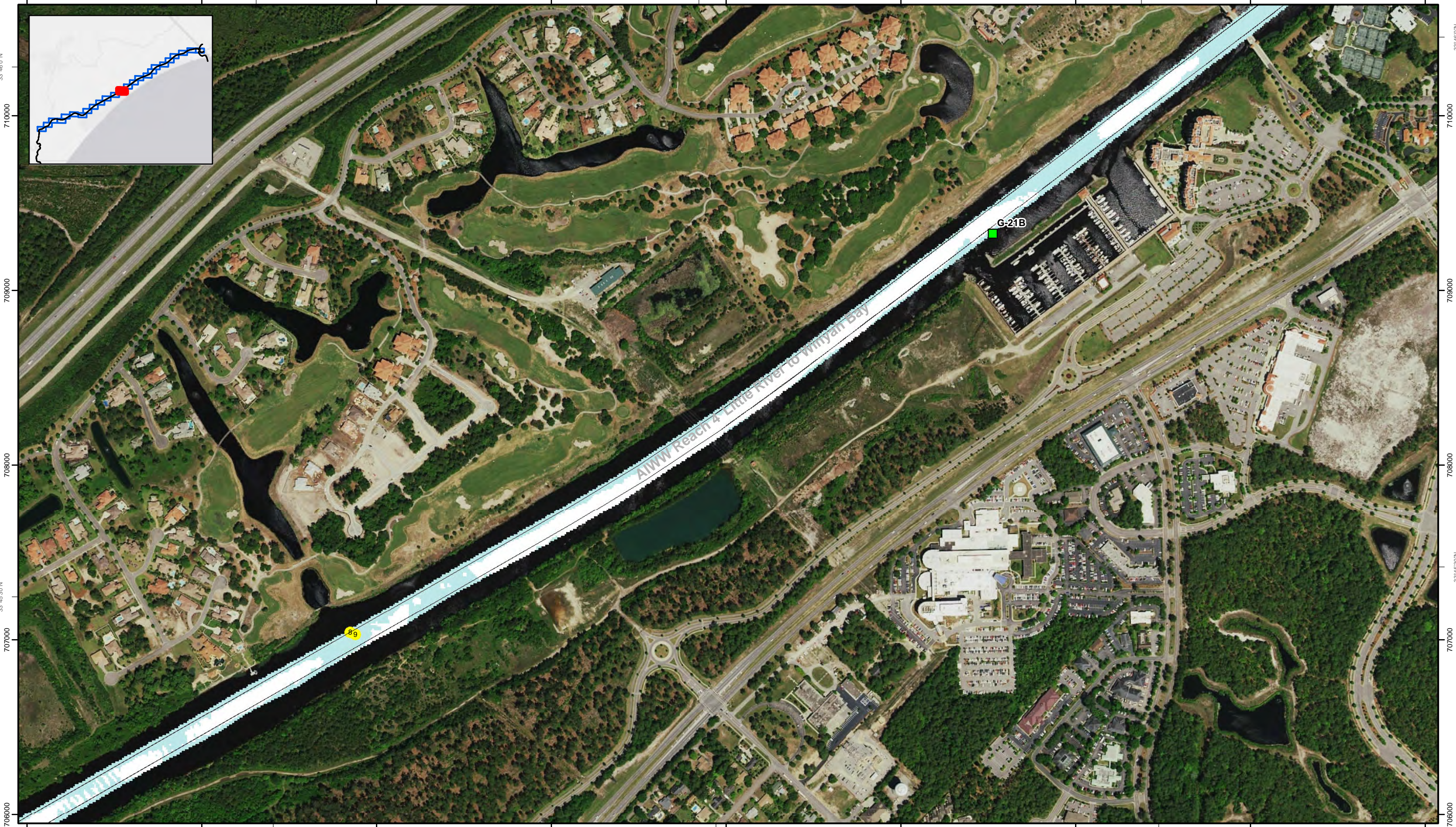


Production Notes:
1. The information depicted on this product is for plotting purposes only.
2. Vector hydrographic data derived from surveys conducted by the USACE and approved partners.
3. Soundings are in feet and refer to Mean Lower Low Water (MLLW).
4. Raster Background: ArcGIS Online Image Basemap.
This product is not intended to be used for navigation.
Mariners are encouraged to use all prudent safety measures.

In no event shall the U.S. Army Corps of Engineers, Charleston District Office, Spatial Data Branch be liable for direct, indirect, incidental, consequential or special damages of any kind, including, but not limited to, loss of anticipated profits or benefits arising out of use of or reliance on the data.
These data sets have been developed from the best available sources. Although efforts have been made to ensure that the datasets are accurate and reliable, errors and variable conditions originating from physical sources used to develop the data may be reflected in the data supplied.
This product is not intended to be used for navigation.
Mariners are encouraged to use all prudent safety measures.



2657000 2658000 2659000 2660000 2661000 2662000 2663000 2664000 2665000



2657000 2658000 2659000 2660000 2661000 2662000 2663000 2664000 2665000

SHEET
REFERENCE
NUMBER
C003
Page 13 of 25

Atlantic Intercoastal Waterway (AIWW) Channel Survey
The information depicted on this map represents the results of surveys made on the dates indicated and can only be considered as indicating the general conditions existing at that time.
Concluded on: **Date**
Little River, SC to Bucksport, SC

U.S. ARMY ENGINEER DISTRICT
CORPS OF ENGINEERS
CHARLESTON, SOUTH CAROLINA
SPATIAL DATA BRANCH
69A HAGOOD AVE
CHARLESTON, SC 29403
CESAC-GIS@USACE.ARMY.MIL

Designed By: eHydro Software v3.82	Survey Date: 01 DEC 2015	Production Date: 07 JAN 2016
Reviewed By: MZB	Absolute Scale: 1:6,000	Project Reference Number: CESAC-PRA-0001
Reference Scale: 1 inch = 500 feet	Survey Type: Condition	
Projection: NAD 1983 StatePlane South Carolina FIPS 3900 Feet		

Shoalest Sounding
● Sounding
Sounding may cover several point areas and is calculated per reach quarter area
"±" indicates sounding above MLLW

USCG Beacon
■ Green
▲ Red
□ White

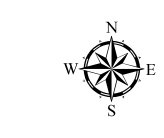
USCG Buoy
● Green
● Red
● Coast Guard Racon

○ White
○ Yellow
○ USCG Light

Depth in feet

Less than 4	4 to 12	Greater than 12
-------------	---------	-----------------

0 250 500 1,000 1,500 Feet

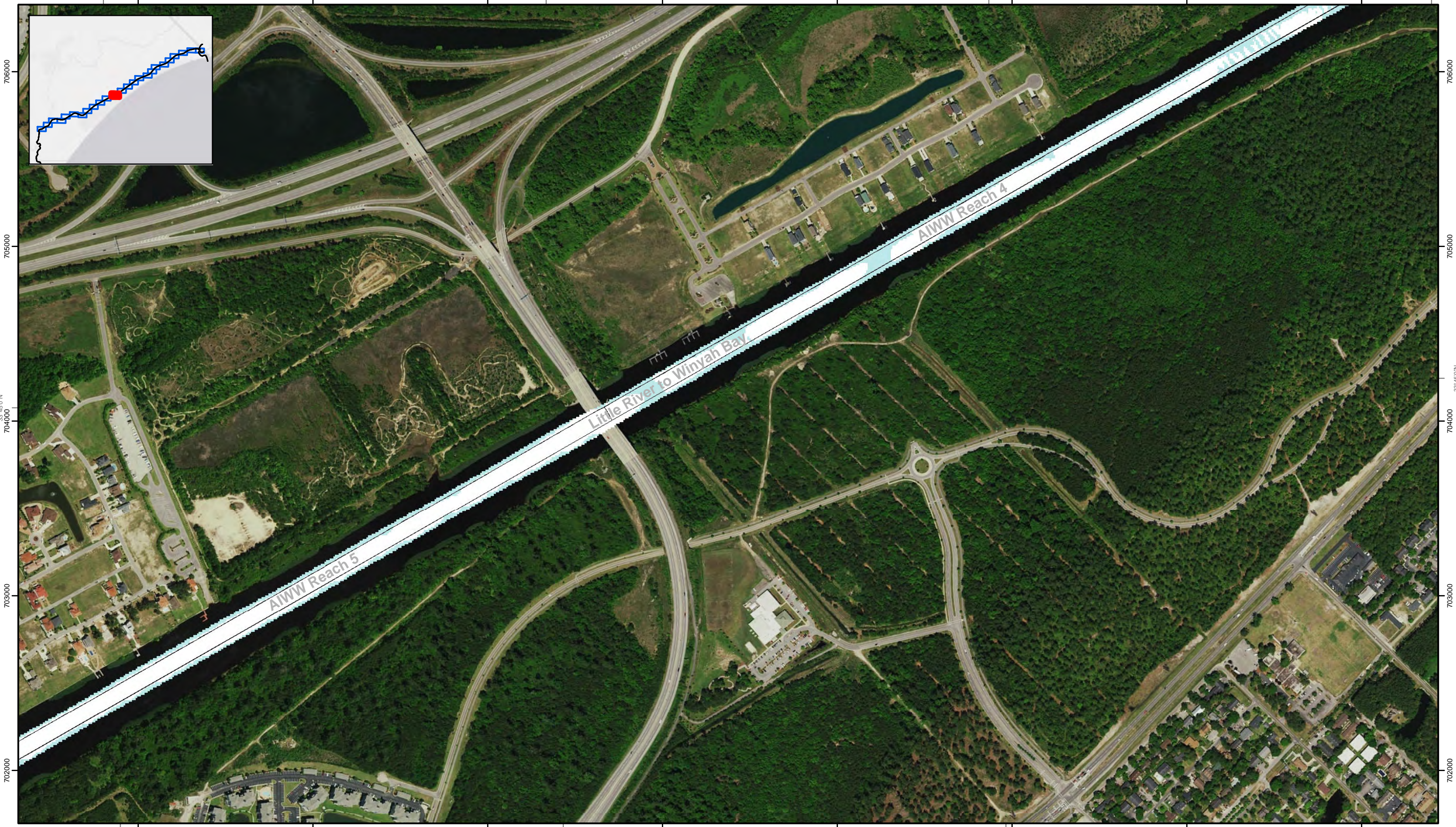
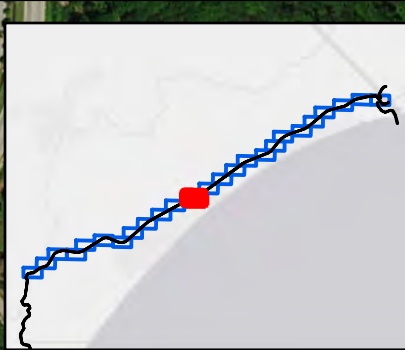


Production Notes:
1. The information depicted on this product is for plotting purposes only.
2. Vector hydrographic data derived from surveys conducted by the USACE and approved partners.
3. Soundings are in feet and refer to Mean Lower Low Water (MLLW).
4. Raster Background: ArcGIS Online Image Basemap.
This product is not intended to be used for navigation.
Mariners are encouraged to use all prudent safety measures.

In no event shall the U.S. Army Corps of Engineers, Charleston District Office, Spatial Data Branch be liable for direct, indirect, incidental, consequential or special damages of any kind, including, but not limited to, loss of anticipated profits or benefits arising out of use of or reliance on the data.
These data sets have been developed from the best available sources. Although efforts have been made to ensure that the datasets are accurate and reliable, errors and variable conditions originating from physical sources used to develop the data may be reflected in the data supplied.
This product is not intended to be used for navigation.
Mariners are encouraged to use all prudent safety measures.



78°51'30"W 2651000 2652000 2653000 78°51'0"W 2654000 2655000 78°50'30"W 2656000 2657000 2658000 78°50'0"W



78°51'30"W 2651000 2652000 2653000 78°51'0"W 2654000 2655000 78°50'30"W 2656000 2657000 2658000 78°50'0"W

702000 703000 704000 705000 706000

33°45'0"N 33°45'0"N

U.S. ARMY ENGINEER DISTRICT
CORPS OF ENGINEERS
CHARLESTON, SOUTH CAROLINA

SPATIAL DATA BRANCH
69A HAGOOD AVE
CHARLESTON, SC 29403
CESAC-GIS@USACE.ARMY.MIL

Designed By: **eHydro Software v3.82**
Reviewed By: **MZB**
Reference Scale: **1 inch = 500 feet**
Projection: **NAD 1983 StatePlane South Carolina FIPS 3900 Feet**

Survey Date: **01 DEC 2015**
Production Date: **07 JAN 2016**
Project Reference Number: **CESAC-PRA-0001**
Survey Type: **Condition**

Shoalest Sounding
Sounding
Sounding may cover several point areas and is calculated per reach quarter area
"±" indicates sounding above MLLW

USCG Beacon
Green
White

USCG Buoy
Green
Red
Coast Guard Racon

White
Yellow
USCG Light

Depth in feet
Less than 4
4 to 12
Greater than 12

0 250 500 1,000 1,500 Feet

Production Notes:
1. The information depicted on this product is for plotting purposes only.
2. Vector hydrographic data derived from surveys conducted by the USACE and approved partners to Mean Lower Low Water (MLLW).
3. Soundings are in feet and refer to Mean Lower Low Water (MLLW).
4. Raster Background: ArcGIS Online Image Basemap.
This product is not intended to be used for navigation.
Mariners are encouraged to use all prudent safety measures.

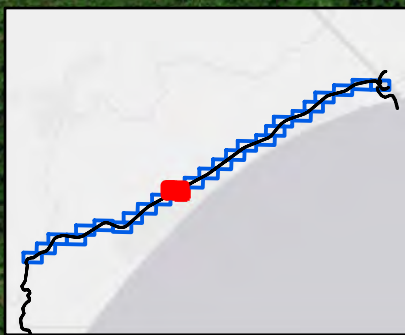
In no event shall the U.S. Army Corps of Engineers, Charleston District Office, Spatial Data Branch be liable for direct, indirect, incidental, consequential or special damages of any kind, including, but not limited to, loss of anticipated profits or benefits arising out of use of or reliance on the data.
These data sets have been developed from the best available sources. Although efforts have been made to ensure that the datasets are accurate and reliable, errors and variable conditions originating from physical sources used to develop the data may be reflected in the data supplied.
This product is not intended to be used for navigation.
Mariners are encouraged to use all prudent safety measures.

U.S. Army Corps of Engineers
Charleston District

SHEET REFERENCE NUMBER
C003
Page 14 of 25

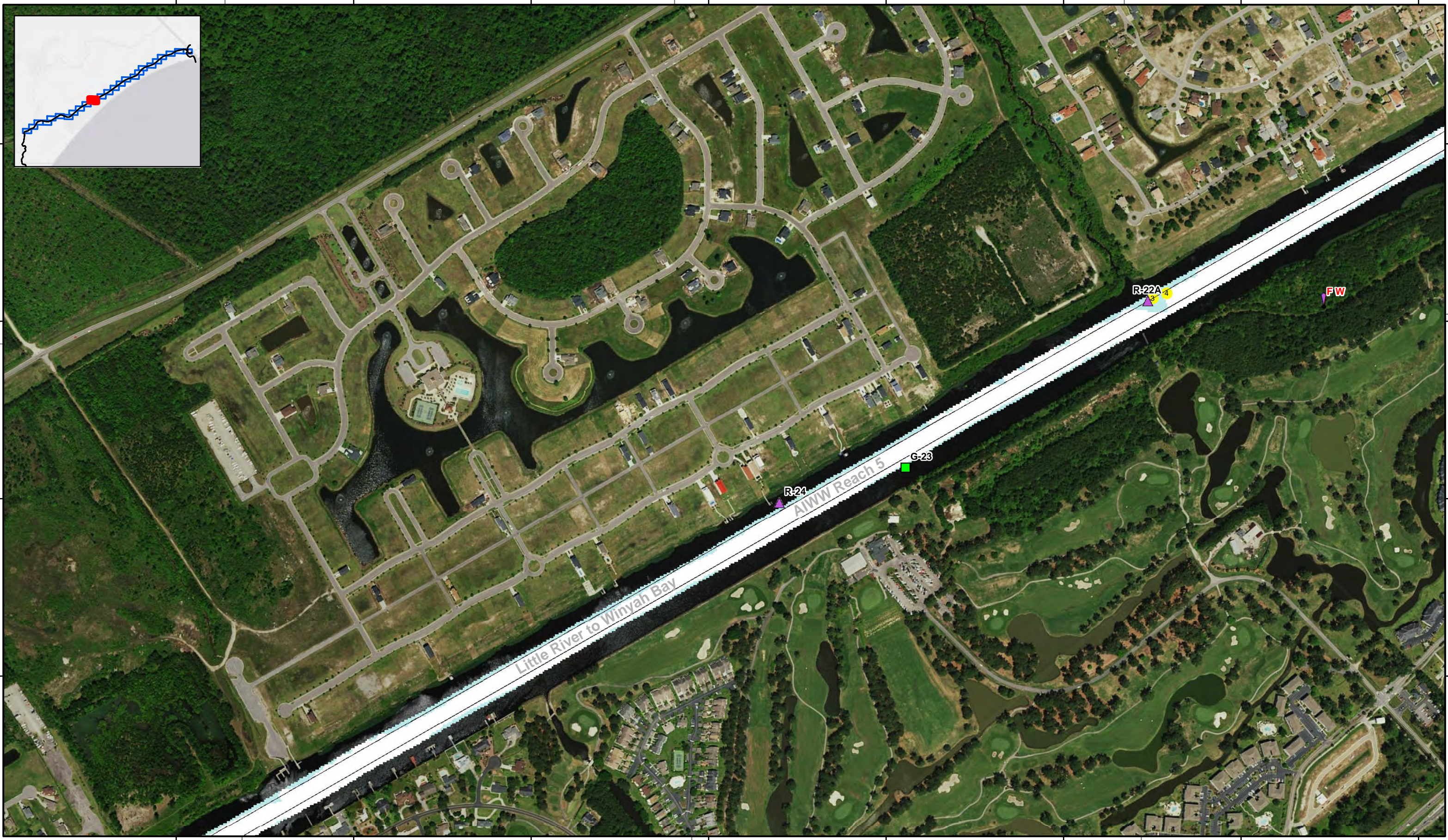
Atlantic Interoceanic Waterway (AIWW) Channel Survey
The information depicted on this map represents the results of surveys made on the dates indicated and can only be considered as indicating the general conditions existing at that time.
Concluded on: **Date**
Little River, SC to Bucksport, SC

2643000 78°53'0"W 2644000 2645000 2646000 2647000 2648000 78°52'0"W 2649000 2650000



702000
701000
700000
699000

702000
701000
700000
699000



2643000 78°53'0"W 2644000 2645000 2646000 2647000 2648000 78°52'0"W 2649000 2650000

SHEET
REFERENCE
NUMBER
C003
Page 15 of 25

**Atlantic Intercoastal Waterway (AIWW)
Channel Survey**
The information depicted on this map represents the results of surveys made on the dates indicated and can only be considered as indicating the general conditions existing at that time.
Concluded on: **Date**
Little River, SC to Bucksport, SC

U.S. ARMY ENGINEER DISTRICT
CORPS OF ENGINEERS
CHARLESTON, SOUTH CAROLINA
SPATIAL DATA BRANCH
69A HAGOOD AVE
CHARLESTON, SC 29403
CESAC-GIS@USACE.ARMY.MIL

Designed By: eHydro Software v3.82	Survey Date: 01 DEC 2015	Production Date: 07 JAN 2016
Reviewed By: MZB	Absolute Scale: 1:6,000	Project Reference Number: CESAC-PRA-0001
Reference Scale: 1 inch = 500 feet	Survey Type: Condition	
Projection: NAD 1983 StatePlane South Carolina FIPS 3900 Feet		

Shoalest Sounding
Sounding may cover several point areas and is calculated per reach quarter area
"+ indicates sounding above MLLW

USCG Beacon
Green
Red

USCG Buoy
Green
Red
Coast Guard Racon

White
Yellow
USCG Light

Depth in feet

Less than 4 4 to 12 Greater than 12

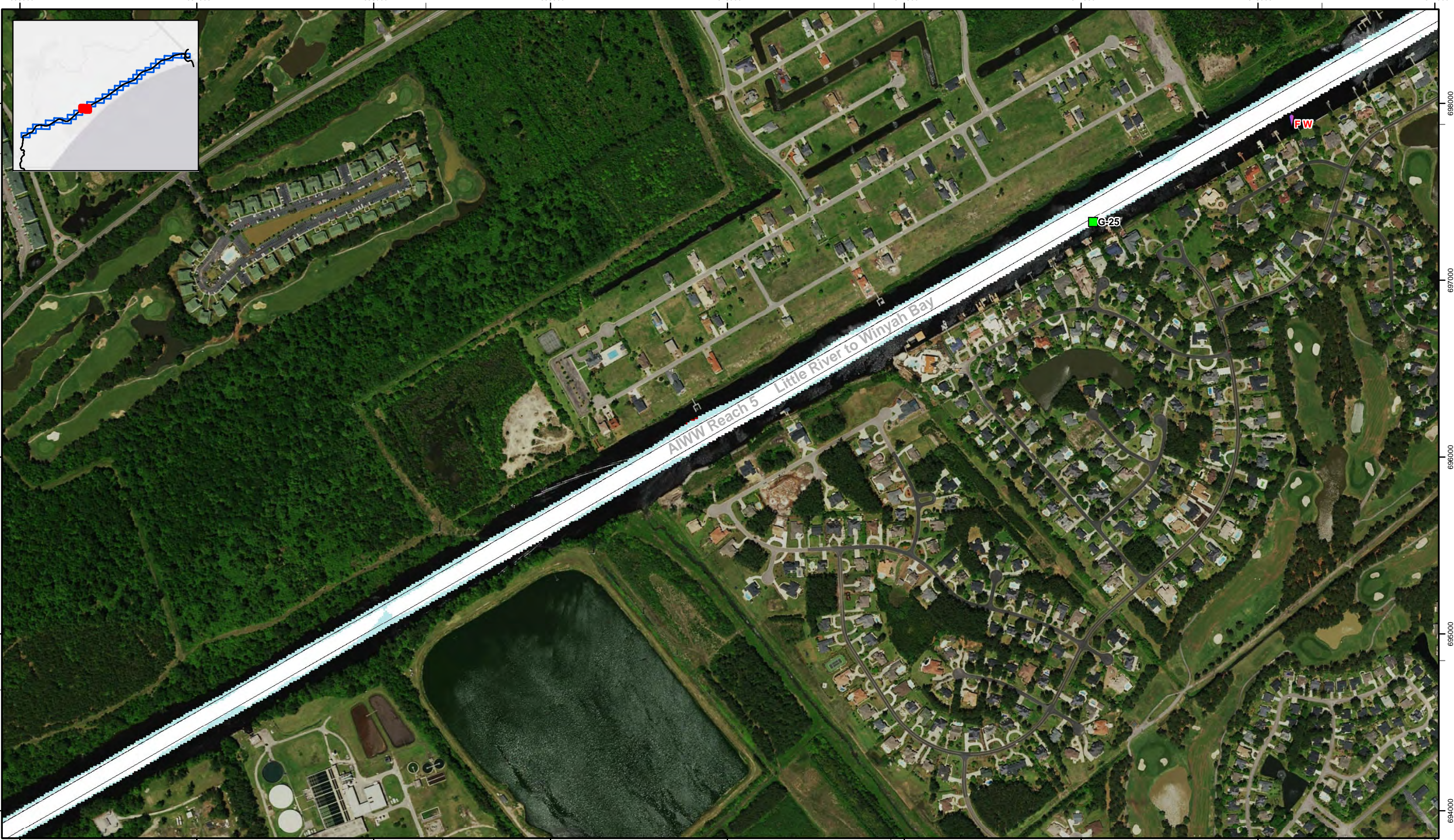
0 250 500 1,000 1,500



Production Notes:
1. The information depicted on this product is for plotting purposes only.
2. Vector hydrographic data derived from surveys conducted by the USACE and approved partners.
3. Soundings are in feet and refer to Mean Lower Low Water (MLLW).
4. Raster Background: ArcGIS Online Image Basemap.
In no event shall the U.S. Army Corps of Engineers, Charleston District Office, Spatial Data Branch be liable for direct, indirect, incidental, consequential or special damages of any kind, including, but not limited to, loss of anticipated profits or benefits arising out of use of or reliance on the data.
These data sets have been developed from the best available sources. Although efforts have been made to ensure that the datasets are accurate and reliable, errors and variable conditions originating from physical sources used to develop the data may be reflected in the data supplied.
This product is not intended to be used for navigation.
Mariners are encouraged to use all prudent safety measures.



2636000 2637000 2638000 2639000 2640000 2641000 2642000 2643000 2644000



2636000 2637000 2638000 2639000 2640000 2641000 2642000 2643000 2644000

SHEET
REFERENCE
NUMBER
C003
Page 16 of 25

**Atlantic Intercoastal Waterway (AIWW)
Channel Survey**
The information depicted on this map represents the results of surveys made on the dates indicated and can only be considered as indicating the general conditions existing at that time.
Concluded on: **Date**
Little River, SC to Bucksport, SC

U.S. ARMY ENGINEER DISTRICT
CORPS OF ENGINEERS
CHARLESTON, SOUTH CAROLINA
SPATIAL DATA BRANCH
69A HAGOOD AVE
CHARLESTON, SC 29403
CESAC-GIS@USACE.ARMY.MIL

Designed By: **eHydro Software v3.82**
Reviewed By: **MZB**
Reference Scale: **1 inch = 500 feet**
Projection: **NAD 1983 StatePlane South Carolina FIPS 3900 Feet**

Survey Date: **01 DEC 2015**
Production Date: **07 JAN 2016**
Project Reference Number: **CESAC-PRA-0001**
Survey Type: **Condition**

Shoalest Sounding
Sounding may cover several point areas and is calculated per reach quarter area
"±" indicates sounding above MLLW

USCG Beacon
Green
Red
White

USCG Buoy
Green
Red
Coast Guard Racon

Depth in feet
White
Yellow
USCG Light

Less than 4
4 to 12
Greater than 12



Production Notes:
1. The information depicted on this product is for plotting purposes only.
2. Vector hydrographic data derived from surveys conducted by the USACE and approved partners.
3. Soundings are in feet and refer to Mean Lower Low Water (MLLW).
4. Raster Background: ArcGIS Online Image Basemap.
In no event shall the U.S. Army Corps of Engineers, Charleston District Office, Spatial Data Branch be liable for direct, indirect, incidental, consequential or special damages of any kind, including, but not limited to, loss of anticipated profits or benefits arising out of use of or reliance on the data.
These data sets have been developed from the best available sources. Although efforts have been made to ensure that the datasets are accurate and reliable, errors and variable conditions originating from physical sources used to develop the data may be reflected in the data supplied.
This product is not intended to be used for navigation.
Mariners are encouraged to use all prudent safety measures.



263000 78°55'30"W 263100 263200 263300 263400 263500 263600 263700



694000
693000
692000
691000
690000

33°43'0"N

263000 263100 263200 263300 263400 263500 263600 263700

78°55'30"W 78°55'0"W 78°54'30"W

694000
693000
692000
691000
690000

33°43'0"N

Atlantic Intercoastal Waterway (AIWW)
Channel Survey

The information depicted on this map represents the results of surveys made on the dates indicated and can only be considered as indicating the general conditions existing at that time.

Concluded on: **Date**

Little River, SC to Bucksport, SC

U.S. ARMY ENGINEER DISTRICT CORPS OF ENGINEERS CHARLESTON, SOUTH CAROLINA	Designed By: eHydro Software v3.82	Survey Date: 01 DEC 2015	Production Date: 07 JAN 2016
SPATIAL DATA BRANCH 69A HAGOOD AVE CHARLESTON, SC 29403 CESAC-GIS@USACE.ARMY.MIL	Reviewed By: MZB	Absolute Scale: 1:6,000	Project Reference Number: CESAC-PRA-0001
	Reference Scale: 1 inch = 500 feet	Survey Type: Condition	
	Projection: NAD 1983 StatePlane South Carolina FIPS 3900 Feet		

Shoalest Sounding

● Sounding

Sounding may cover several point areas and is calculated per reach quarter area

"+" indicates sounding above MLLW

USCG Beacon

■ Green

▲ Red

□ White

USCG Buoy

● Green

● Red

● Coast Guard Racon

○ White

○ Yellow

○ USCG Light

Depth in feet

■ Less than 4

■ 4 to 12

■ Greater than 12

0 250 500 1,000 1,500 Feet

Production Notes:

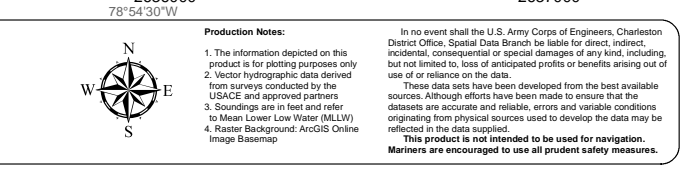
- The information depicted on this product is for plotting purposes only.
- Vector hydrographic data derived from surveys conducted by the USACE and approved partners.
- Soundings are in feet and refer to Mean Lower Low Water (MLLW).
- Raster Background: ArcGIS Online Image Basemap.

In no event shall the U.S. Army Corps of Engineers, Charleston District Office, Spatial Data Branch be liable for direct, indirect, incidental, consequential or special damages of any kind, including, but not limited to, loss of anticipated profits or benefits arising out of use of or reliance on the data.

These data sets have been developed from the best available sources. Although efforts have been made to ensure that the datasets are accurate and reliable, errors and variable conditions originating from physical sources used to develop the data may be reflected in the data supplied.

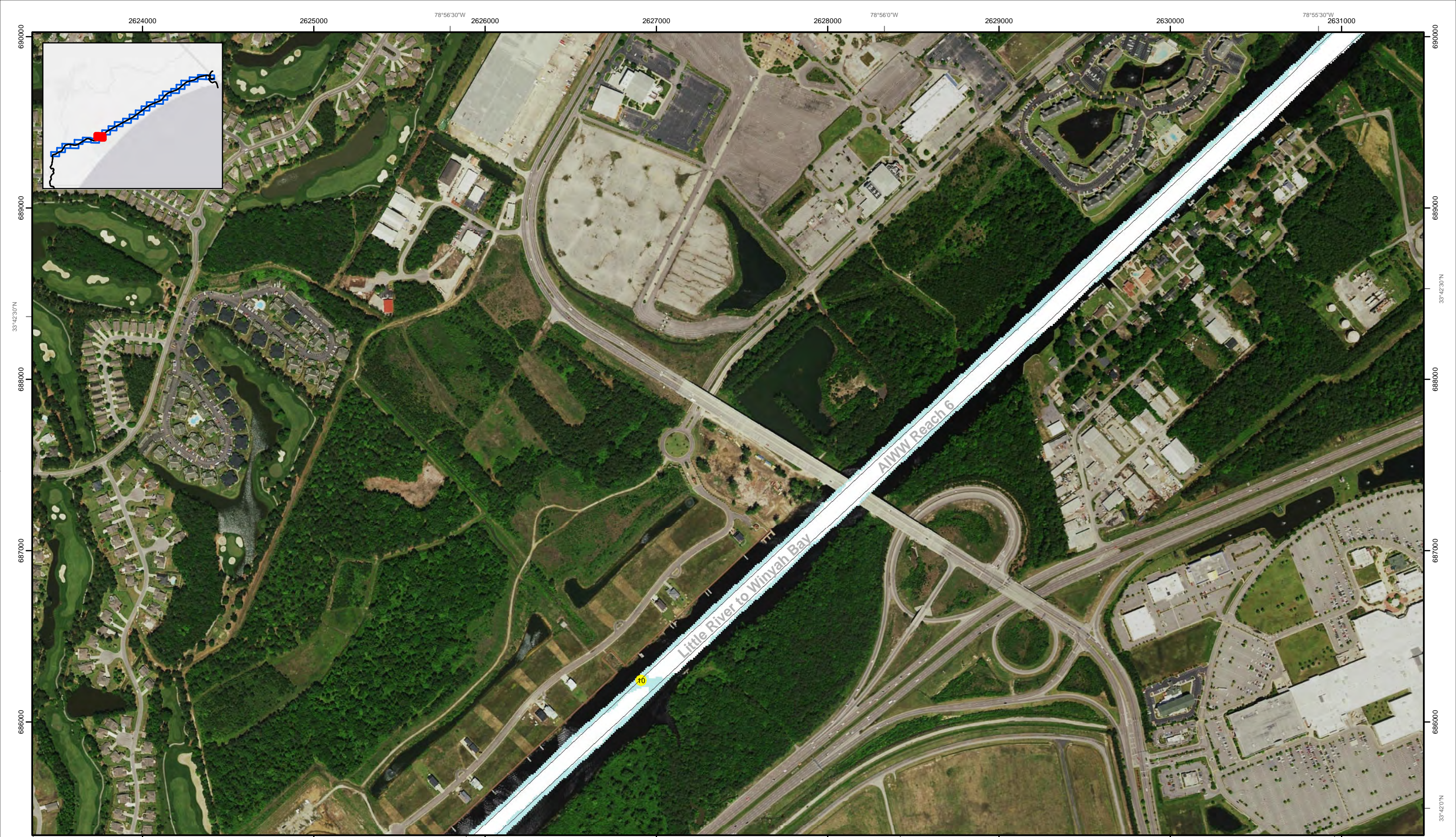
This product is not intended to be used for navigation.

Mariners are encouraged to use all prudent safety measures.



SHEET
REFERENCE
NUMBER
C003

Page 17 of 25



78°57'0\"/>

Atlantic Intercoastal Waterway (AIWW) Channel Survey
 The information depicted on this map represents the results of surveys made on the dates indicated and can only be considered as indicating the general conditions existing at that time.
 Concluded on: **Date**
 Little River, SC to Bucksport, SC

U.S. ARMY ENGINEER DISTRICT
 CORPS OF ENGINEERS
 CHARLESTON, SOUTH CAROLINA
 SPATIAL DATA BRANCH
 69A HAGOOD AVE.
 CHARLESTON, SC 29403
 CESAC-GIS@USACE.ARMY.MIL

Designed By: eHydro Software v3.82	Survey Date: 01 DEC 2015	Production Date: 07 JAN 2016
Reviewed By: MZB	Absolute Scale: 1:6,000	Project Reference Number: CESAC-PRA-0001
Reference Scale: 1 inch = 500 feet	Survey Type: Condition	
Projection: NAD 1983 StatePlane South Carolina FIPS 3900 Feet		

Shoalest Sounding
 Sounding may cover several point areas and is calculated per reach quarter area
 "+" indicates sounding above MLLW

Sounding	USCG Beacon Green	USCG Buoy Green	White
Sounding	USCG Beacon Red	USCG Buoy Red	Yellow
Sounding	USCG Beacon White	Coast Guard Racon	USCG Light

Depth in feet

Less than 4	4 to 12	Greater than 12
-------------	---------	-----------------

0 250 500 1,000 1,500 Feet



Production Notes:
 1. The information depicted on this product is for plotting purposes only.
 2. Vector hydrographic data derived from surveys conducted by the USACE and approved partners.
 3. Soundings are in feet and refer to Mean Lower Low Water (MLLW).
 4. Raster Background: ArcGIS Online Image Basemap.
 In no event shall the U.S. Army Corps of Engineers, Charleston District Office, Spatial Data Branch be liable for direct, indirect, incidental, consequential or special damages of any kind, including, but not limited to, loss of anticipated profits or benefits arising out of use of or reliance on the data.
 These data sets have been developed from the best available sources. Although efforts have been made to ensure that the datasets are accurate and reliable, errors and variable conditions originating from physical sources used to develop the data may be reflected in the data supplied.
 This product is not intended to be used for navigation.
 Mariners are encouraged to use all prudent safety measures.



2619000 2620000 2621000 2622000 2623000 2624000 2625000 2626000

78°57'30"W

78°57'0"W

78°56'30"W

33°42'0"N

684000

683000

682000

33°42'0"N

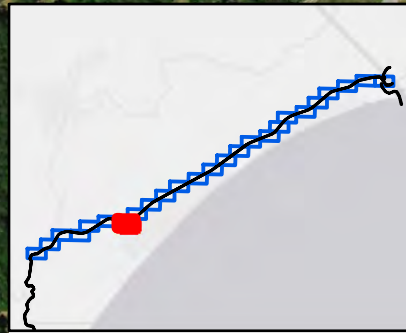
685000

684000

683000

33°41'30"N

682000



AIWW Reach 6 Little River to Winyah Bay

2619000 2620000 2621000 2622000 2623000 2624000 2625000 2626000

78°57'30"W

78°57'0"W

78°56'30"W

33°41'30"N

682000

681000

33°41'30"N

682000

681000

SHEET
REFERENCE
NUMBER
C003
Page 19 of 25

**Atlantic Intercoastal Waterway (AIWW)
Channel Survey**
The information depicted on this map represents the results of surveys made on the dates indicated and can only be considered as indicating the general conditions existing at that time.
Concluded on: **Date**
Little River, SC to Bucksport, SC

U.S. ARMY ENGINEER DISTRICT
CORPS OF ENGINEERS
CHARLESTON, SOUTH CAROLINA
SPATIAL DATA BRANCH
69A HAGOOD AVE
CHARLESTON, SC 29403
CESAC-GIS@USACE.ARMY.MIL

Designed By: eHydro Software v3.82	Survey Date: 01 DEC 2015	Production Date: 07 JAN 2016
Reviewed By: MZB	Absolute Scale: 1:6,000	Project Reference Number: CESAC-PRA-0001
Reference Scale: 1 inch = 500 feet	Survey Type: Condition	
Projection: NAD 1983 StatePlane South Carolina FIPS 3900 Feet		

Shoalest Sounding
Sounding may cover several point areas and is calculated per reach quarter area
"+- indicates sounding above MLLW"

USCG Beacon
Green
Red
White

USCG Buoy
Green
Red
Coast Guard Racon

White
Yellow
USCG Light

Depth in feet

Less than 4 4 to 12 Greater than 12

0 250 500 1,000 1,500

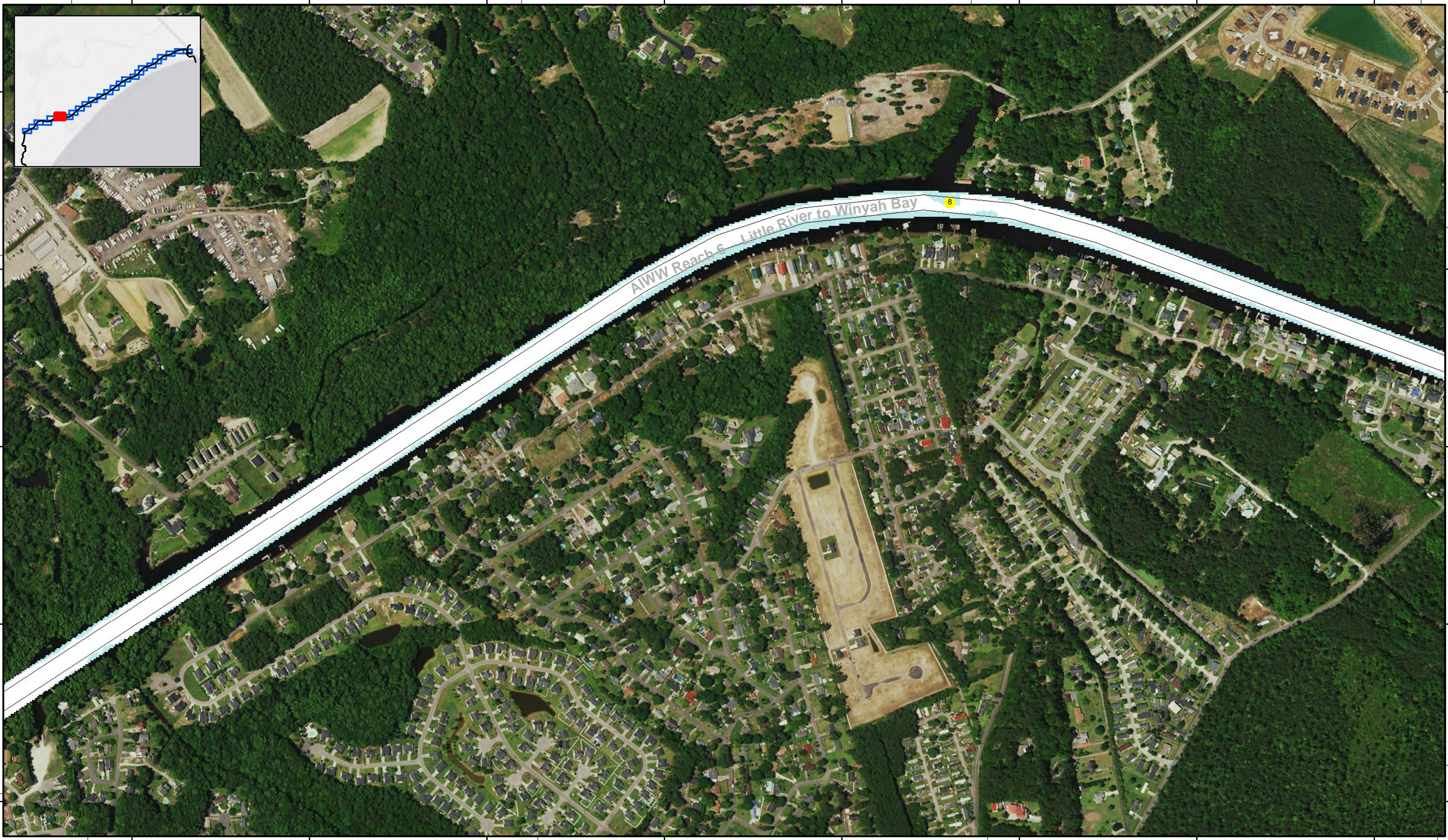


Production Notes:
1. The information depicted on this product is for plotting purposes only.
2. Vector hydrographic data derived from surveys conducted by the USACE and approved partners. Soundings are in feet and refer to Mean Lower Low Water (MLLW).
3. Raster Background: ArcGIS Online Image Basemap.
4. This product is not intended to be used for navigation.
In no event shall the U.S. Army Corps of Engineers, Charleston District Office, Spatial Data Branch be liable for direct, indirect, incidental, consequential or special damages of any kind, including, but not limited to, loss of anticipated profits or benefits arising out of use of or reliance on the data.
These data sets have been developed from the best available sources. Although efforts have been made to ensure that the datasets are accurate and reliable, errors and variable conditions originating from physical sources used to develop the data may be reflected in the data supplied.
Mariners are encouraged to use all prudent safety measures.



U.S. Army Corps of Engineers
Charleston District

78°59'30"W 2611000 2612000 2613000 78°59'0"W 2614000 2615000 78°58'30"W 2616000 2617000 2618000 78°58'0"W



33°41'30"N 682000 683000 684000 685000 686000

33°41'30"N 682000 683000 684000 685000 686000

78°59'30"W 2611000 2612000 2613000 78°59'0"W 2614000 2615000 78°58'30"W 2616000 2617000 2618000 78°58'0"W

SHEET
REFERENCE
NUMBER
C003
Page 20 of 25

**Atlantic Intercoastal Waterway (AIWW)
Channel Survey**
The information depicted on this map represents the results of surveys made on the dates indicated and can only be considered as indicating the general conditions existing at that time.
Concluded on: **Date**
Little River, SC to Bucksport, SC

U.S. ARMY ENGINEER DISTRICT
CORPS OF ENGINEERS
CHARLESTON, SOUTH CAROLINA
SPATIAL DATA BRANCH
69A HAGOOD AVE
CHARLESTON, SC 29403
CESAC-GIS@USACE.ARMY.MIL

Designed By: **eHydro Software v3.82**
Reviewed By: **MZB**
Reference Scale: **1 inch = 500 feet**
Projection: **NAD 1983 StatePlane South Carolina FIPS 3900 Feet**

Survey Date: **01 DEC 2015**
Production Date: **07 JAN 2016**
Project Reference Number: **CESAC-PRA-0001**
Survey Type: **Condition**

Shoalest Sounding
Sounding may cover several point areas and is calculated per reach quarter area
"±" indicates sounding above MLLW

USCG Beacon
Green
Red
White

USCG Buoy
Green
Red
Coast Guard Racon

USCG Light
White
Yellow

Depth in feet
Less than 4
4 to 12
Greater than 12

0 250 500 1,000 1,500 Feet

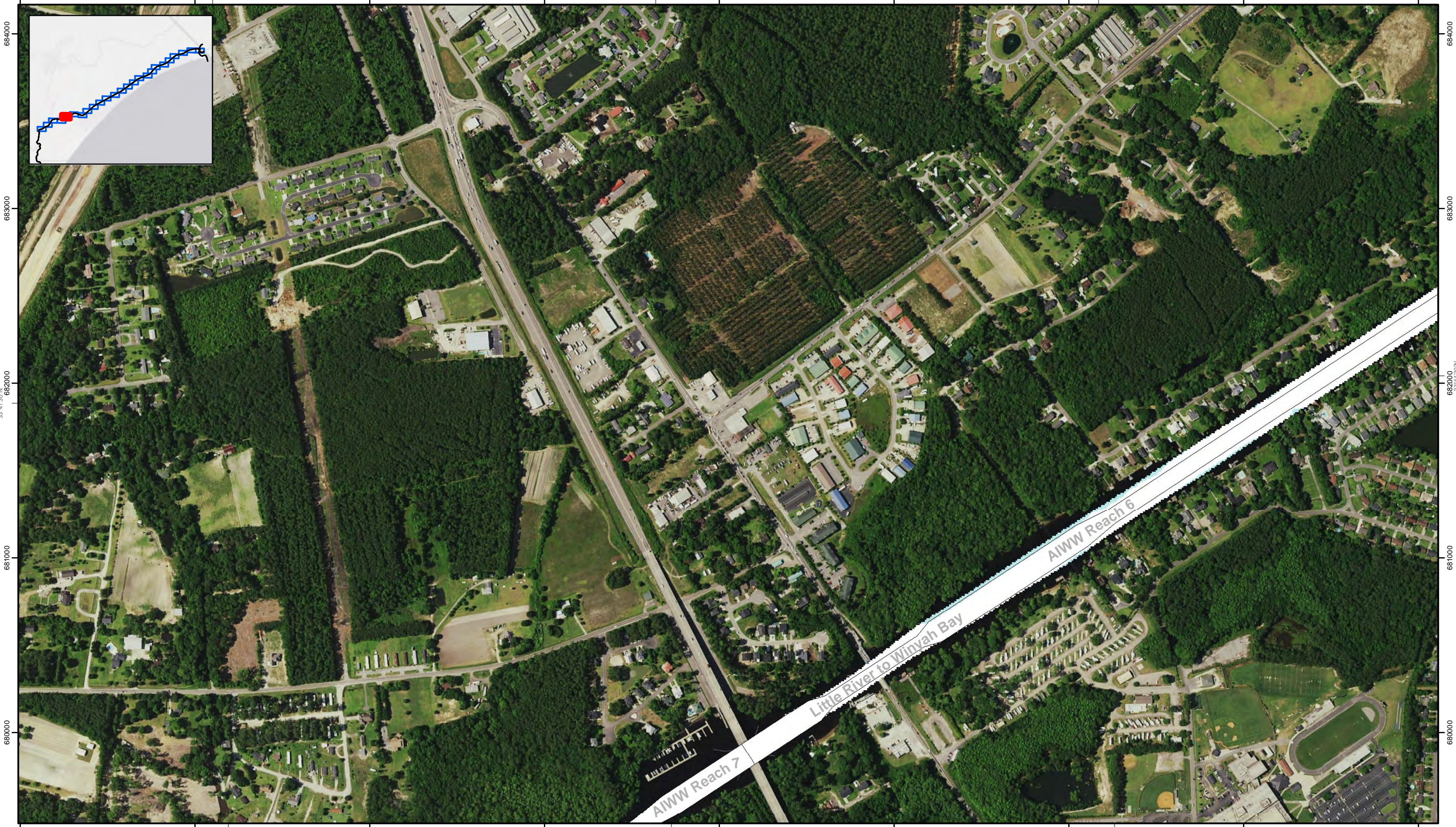


Production Notes:
1. The information depicted on this product is for plotting purposes only.
2. Vector hydrographic data derived from surveys conducted by the USACE and approved partners.
3. Soundings are in feet and refer to Mean Lower Low Water (MLLW).
4. Raster Background: ArcGIS Online Image Basemap.
This product is not intended to be used for navigation.
Mariners are encouraged to use all prudent safety measures.

In no event shall the U.S. Army Corps of Engineers, Charleston District Office, Spatial Data Branch be liable for direct, indirect, incidental, consequential or special damages of any kind, including, but not limited to, loss of anticipated profits or benefits arising out of use of or reliance on the data.
These data sets have been developed from the best available sources. Although efforts have been made to ensure that the datasets are accurate and reliable, errors and variable conditions originating from physical sources used to develop the data may be reflected in the data supplied.
This product is not intended to be used for navigation.
Mariners are encouraged to use all prudent safety measures.



262000 263000 264000 265000 266000 267000 268000 269000 261000



262000 263000 264000 265000 266000 267000 268000 269000 261000

SHEET
REFERENCE
NUMBER
C003
Page 21 of 25

**Atlantic Intercoastal Waterway (AIWW)
Channel Survey**
The information depicted on this map represents the results of surveys made on the dates indicated and can only be considered as indicating the general conditions existing at that time.
Concluded on: **Date**
Little River, SC to Bucksport, SC

U.S. ARMY ENGINEER DISTRICT
CORPS OF ENGINEERS
CHARLESTON, SOUTH CAROLINA
SPATIAL DATA BRANCH
69A HAGOOD AVE
CHARLESTON, SC 29403
CESAC-GIS@USACE.ARMY.MIL

Designed By: **eHydro Software v3.82**
Reviewed By: **MZB**
Reference Scale: **1 inch = 500 feet**
Projection: **NAD 1983 StatePlane South Carolina FIPS 3900 Feet**

Survey Date: **01 DEC 2015**
Production Date: **07 JAN 2016**
Project Reference Number: **CESAC-PRA-0001**
Survey Type: **Condition**

Shoalest Sounding
Sounding
Sounding may cover several point areas and is calculated per reach quarter area
"+ " indicates sounding above MLLW

USCG Beacon
Green
Red
White

USCG Buoy
Green
Red
Coast Guard Racon

White
Yellow
USCG Light

Depth in feet
Less than 4
4 to 12
Greater than 12

0 250 500 1,000 1,500 Feet



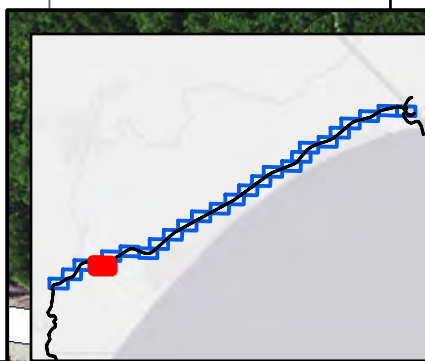
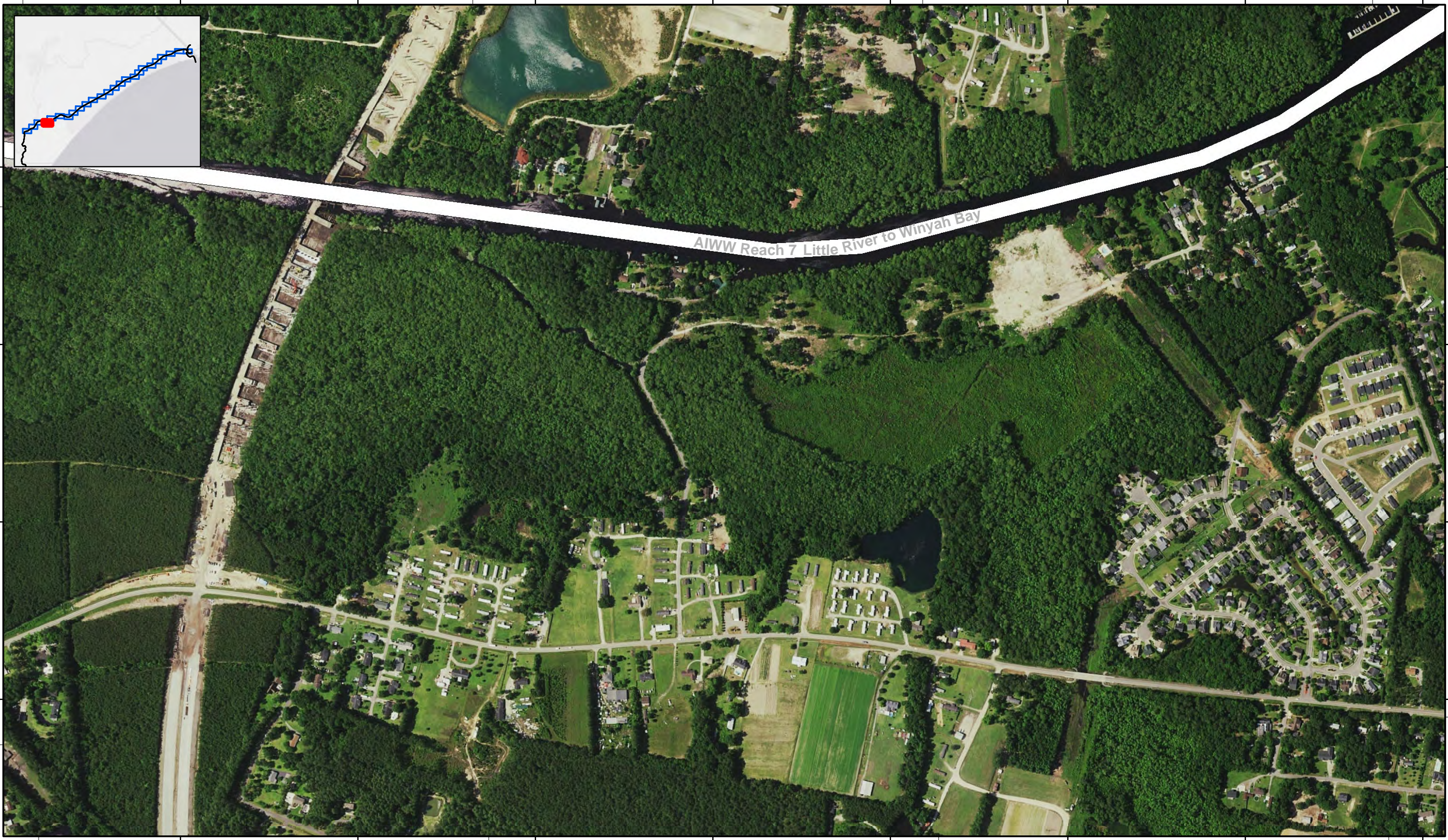
Production Notes:
1. The information depicted on this product is for plotting purposes only.
2. Vector hydrographic data derived from surveys conducted by the USACE and approved partners.
3. Soundings are in feet and refer to Mean Lower Low Water (MLLW).
4. Raster Background: ArcGIS Online Image Basemap.
This product is not intended to be used for navigation.
Mariners are encouraged to use all prudent safety measures.

In no event shall the U.S. Army Corps of Engineers, Charleston District Office, Spatial Data Branch be liable for direct, indirect, incidental, consequential or special damages of any kind, including, but not limited to, loss of anticipated profits or benefits arising out of use of or reliance on the data.
These data sets have been developed from the best available sources. Although efforts have been made to ensure that the datasets are accurate and reliable, errors and variable conditions originating from physical sources used to develop the data may be reflected in the data supplied.
This product is not intended to be used for navigation.
Mariners are encouraged to use all prudent safety measures.



U.S. Army Corps of Engineers
Charleston District

79°2'0"W 2599000 2600000 2601000 2602000 2603000 2604000 2605000 2606000



679000 678000 677000 676000

33°41'0"N 33°40'30"N

AIWW Reach 7 Little River to Winyah Bay

79°2'0"W 2599000 2600000 2601000 2602000 2603000 2604000 2605000 2606000

SHEET
REFERENCE
NUMBER
C003
Page 22 of 25

**Atlantic Intercoastal Waterway (AIWW)
Channel Survey**
The information depicted on this map represents the results of surveys made on the dates indicated and can only be considered as indicating the general conditions existing at that time.
Concluded on: **Date**
Little River, SC to Bucksport, SC

U.S. ARMY ENGINEER DISTRICT
CORPS OF ENGINEERS
CHARLESTON, SOUTH CAROLINA
SPATIAL DATA BRANCH
69A HAGOOD AVE
CHARLESTON, SC 29403
CESAC-GIS@USACE.ARMY.MIL

Designed By: eHydro Software v3.82	Survey Date: 01 DEC 2015	Production Date: 07 JAN 2016
Reviewed By: MZB	Absolute Scale: 1:6,000	Project Reference Number: CESAC-PRA-0001
Reference Scale: 1 inch = 500 feet	Survey Type: Condition	
Projection: NAD 1983 StatePlane South Carolina FIPS 3900 Feet		

Shoalest Sounding
Sounding may cover several point areas and is calculated per reach quarter area
"+- indicates sounding above MLLW

● Sounding	■ Green USCG Beacon	● Green USCG Buoy	○ White
	▲ Red	● Red	○ Yellow
	□ White	● Coast Guard Racon	○ USCG Light

Depth in feet

■ Less than 4	■ 4 to 12	■ Greater than 12
---------------	-----------	-------------------

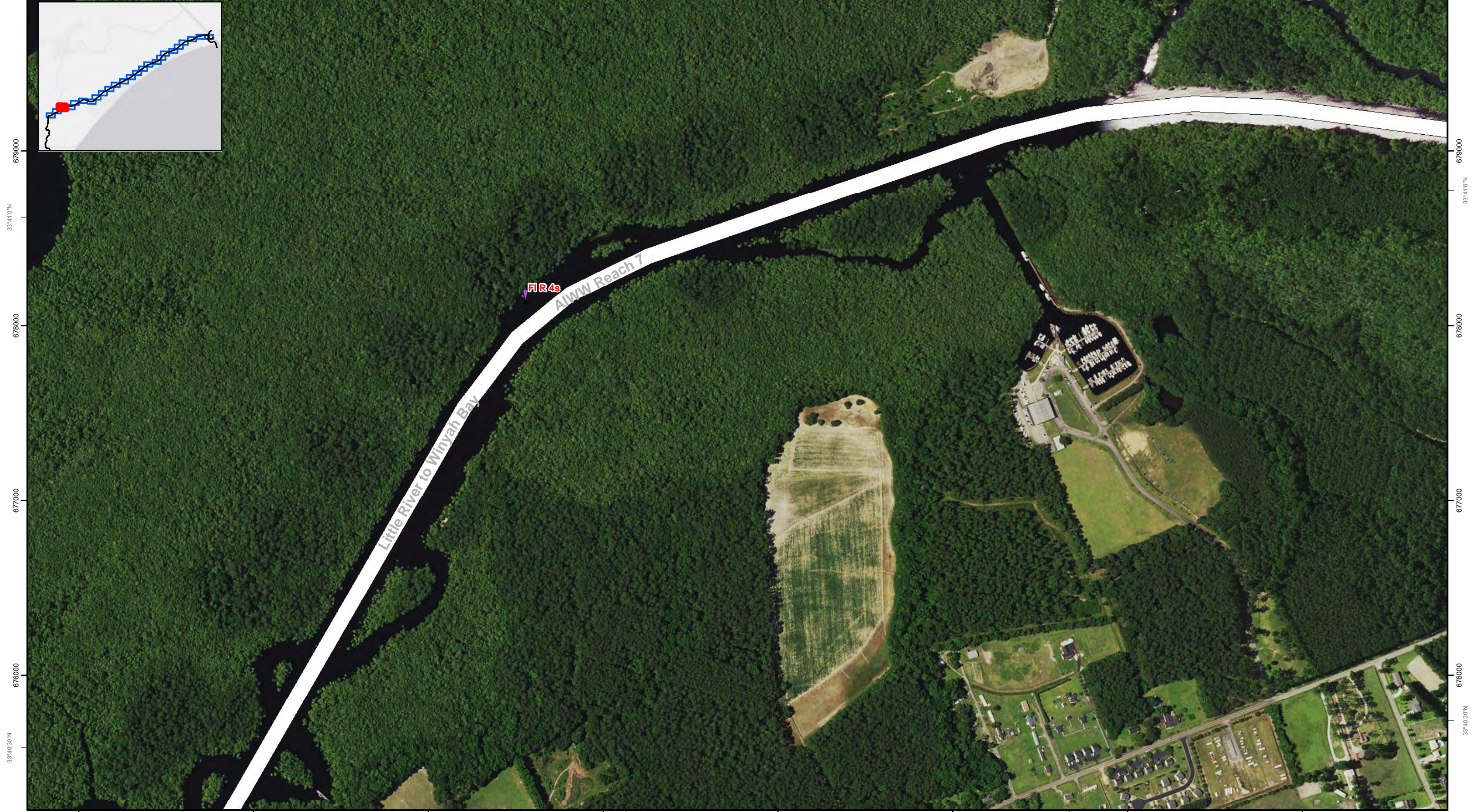
0 250 500 1,000 1,500 Feet



Production Notes:
1. The information depicted on this product is for plotting purposes only.
2. Vector hydrographic data derived from surveys conducted by the USACE and approved partners.
3. Soundings are in feet and refer to Mean Lower Low Water (MLLW).
4. Raster Background: ArcGIS Online Image Basemap.
In no event shall the U.S. Army Corps of Engineers, Charleston District Office, Spatial Data Branch be liable for direct, indirect, incidental, consequential or special damages of any kind, including, but not limited to, loss of anticipated profits or benefits arising out of use of or reliance on the data.
These data sets have been developed from the best available sources. Although efforts have been made to ensure that the datasets are accurate and reliable, errors and variable conditions originating from physical sources used to develop the data may be reflected in the data supplied.
This product is not intended to be used for navigation.
Mariners are encouraged to use all prudent safety measures.



2590000 79°3'30"W 2591000 2592000 2593000 2594000 2595000 2596000 2597000



679000 678000 677000 676000

33°41'0"N 33°40'30"N

2590000 79°3'30"W 2591000 2592000 2593000 2594000 2595000 2596000 2597000

SHEET REFERENCE NUMBER
C003
Page 23 of 25

Atlantic Intercoastal Waterway (AIWW) Channel Survey
The information depicted on this map represents the results of surveys made on the dates indicated and can only be considered as indicating the general conditions existing at that time.
Concluded on: **Date**
Little River, SC to Bucksport, SC

U.S. ARMY ENGINEER DISTRICT
CORPS OF ENGINEERS
CHARLESTON, SOUTH CAROLINA
SPATIAL DATA BRANCH
69A HAGOOD AVE
CHARLESTON, SC 29403
CESAC-GIS@USACE.ARMY.MIL

Designed By: **eHydro Software v3.82**
Reviewed By: **MZB**
Reference Scale: **1 inch = 500 feet**
Projection: **NAD 1983 StatePlane South Carolina FIPS 3900 Feet**

Survey Date: **01 DEC 2015**
Production Date: **07 JAN 2016**
Project Reference Number: **CESAC-PRA-0001**
Survey Type: **Condition**

Shoalest Sounding
Sounding may cover several point areas and is calculated per reach quarter area
"+ " indicates sounding above MLLW

USCG Beacon
Green
Red
White

USCG Buoy
Green
Red
Coast Guard Racon

White
Yellow
USCG Light

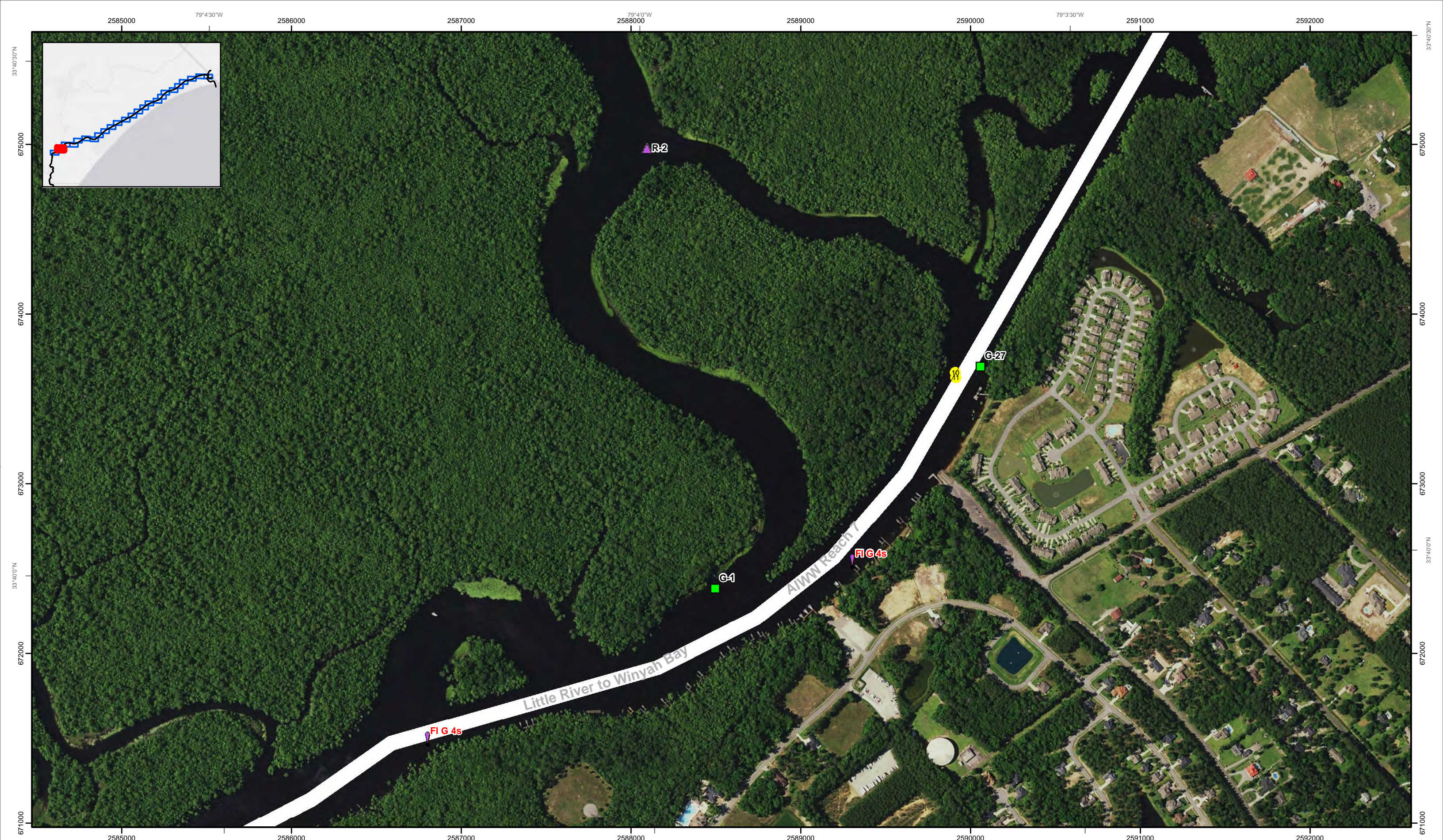
Depth in feet
Less than 4
4 to 12
Greater than 12



Production Notes:
1. The information depicted on this product is for plotting purposes only.
2. Vector hydrographic data derived from surveys conducted by the USACE and approved partners.
3. Soundings are in feet and refer to Mean Lower Low Water (MLLW).
4. Raster Background: ArcGIS Online Image Basemap.
This product is not intended to be used for navigation.
Mariners are encouraged to use all prudent safety measures.

In no event shall the U.S. Army Corps of Engineers, Charleston District Office, Spatial Data Branch be liable for direct, indirect, incidental, consequential or special damages of any kind, including, but not limited to, loss of anticipated profits or benefits arising out of use of or reliance on the data.
These data sets have been developed from the best available sources. Although efforts have been made to ensure that the datasets are accurate and reliable, errors and variable conditions originating from physical sources used to develop the data may be reflected in the data supplied.





SHEET
REFERENCE
NUMBER
C003
Page 24 of 25

**Atlantic Intercoastal Waterway (AIWW)
Channel Survey**
The information depicted on this map represents the results of surveys made on the dates indicated and can only be considered as indicating the general conditions existing at that time.
Concluded on: **Date**
Little River, SC to Bucksport, SC

U.S. ARMY ENGINEER DISTRICT
CORPS OF ENGINEERS
CHARLESTON, SOUTH CAROLINA
SPATIAL DATA BRANCH
68A HAGOOD AVE
CHARLESTON, SC 29403
CESAC-GIS@USACE.ARMY.MIL

Designed By: eHydro Software v3.82	Survey Date: 01 DEC 2015	Production Date: 07 JAN 2016
Reviewed By: MZB	Absolute Scale: 1:6,000	Project Reference Number: CESAC-PRA-0001
Reference Scale: 1 inch = 500 feet	Survey Type: Condition	
Projection: NAD 1983 StatePlane South Carolina FIPS 3900 Feet		

Shoalest Sounding
Sounding may cover several point areas and is calculated per reach quarter area
"±" indicates sounding above MLLW

Sounding	USCG Beacon Green	USCG Buoy Green	White
USCG Beacon Red	USCG Buoy Red	Yellow	USCG Light
White	Coast Guard Racon		

Depth in feet

Less than 4	4 to 12	Greater than 12
-------------	---------	-----------------

0 250 500 1,000 1,500 Feet



Production Notes:
1. The information depicted on this product is for plotting purposes only.
2. Vector hydrographic data derived from surveys conducted by the USACE and approved partners.
3. Soundings are in feet and refer to Mean Lower Low Water (MLLW).
4. Raster Background: ArcGIS Online Image Basemap.
In no event shall the U.S. Army Corps of Engineers, Charleston District Office, Spatial Data Branch be liable for direct, indirect, incidental, consequential or special damages of any kind, including, but not limited to, loss of anticipated profits or benefits arising out of use of or reliance on the data.
These data sets have been developed from the best available sources. Although efforts have been made to ensure that the datasets are accurate and reliable, errors and variable conditions originating from physical sources used to develop the data may be reflected in the data supplied.
This product is not intended to be used for navigation.
Mariners are encouraged to use all prudent safety measures.



2579000 2580000 2581000 2582000 2583000 2584000 2585000 2586000



2579000 2580000 2581000 2582000 2583000 2584000 2585000 2586000

SHEET
REFERENCE
NUMBER
C003
Page 25 of 25

Atlantic Intercoastal Waterway (AIWW) Channel Survey
The information depicted on this map represents the results of surveys made on the dates indicated and can only be considered as indicating the general conditions existing at that time.
Concluded on: **Date**
Little River, SC to Bucksport, SC

U.S. ARMY ENGINEER DISTRICT
CORPS OF ENGINEERS
CHARLESTON, SOUTH CAROLINA
SPATIAL DATA BRANCH
68A HAGOOD AVE.
CHARLESTON, SC 29403
CESAC-GIS@USACE.ARMY.MIL

Designed By: eHydro Software v3.82	Survey Date: 01 DEC 2015	Production Date: 07 JAN 2016
Reviewed By: MZB	Absolute Scale: 1:6,000	Project Reference Number: CESAC-PRA-0001
Reference Scale: 1 inch = 500 feet	Survey Type: Condition	
Projection: NAD 1983 StatePlane South Carolina FIPS 3900 Feet		

Shoalest Sounding
● Sounding
Sounding may cover several point areas and is calculated per reach quarter area
"±" indicates sounding above MLLW

USCG Beacon
■ Green
▲ Red
□ White

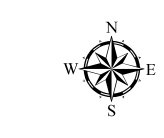
USCG Buoy
● Green
● Red
● Coast Guard Racon

○ White
○ Yellow
○ USCG Light

Depth in feet

■ Less than 4 ■ 4 to 12 ■ Greater than 12

0 250 500 1,000 1,500 Feet



Production Notes:
1. The information depicted on this product is for plotting purposes only.
2. Vector hydrographic data derived from surveys conducted by the USACE and approved partners.
3. Soundings are in feet and refer to Mean Lower Low Water (MLLW).
4. Raster Background: ArcGIS Online Image Basemap.
This product is not intended to be used for navigation.
Mariners are encouraged to use all prudent safety measures.

In no event shall the U.S. Army Corps of Engineers, Charleston District Office, Spatial Data Branch be liable for direct, indirect, incidental, consequential or special damages of any kind, including, but not limited to, loss of anticipated profits or benefits arising out of use of or reliance on the data.
These data sets have been developed from the best available sources. Although efforts have been made to ensure that the datasets are accurate and reliable, errors and variable conditions originating from physical sources used to develop the data may be reflected in the data supplied.
This product is not intended to be used for navigation.
Mariners are encouraged to use all prudent safety measures.

