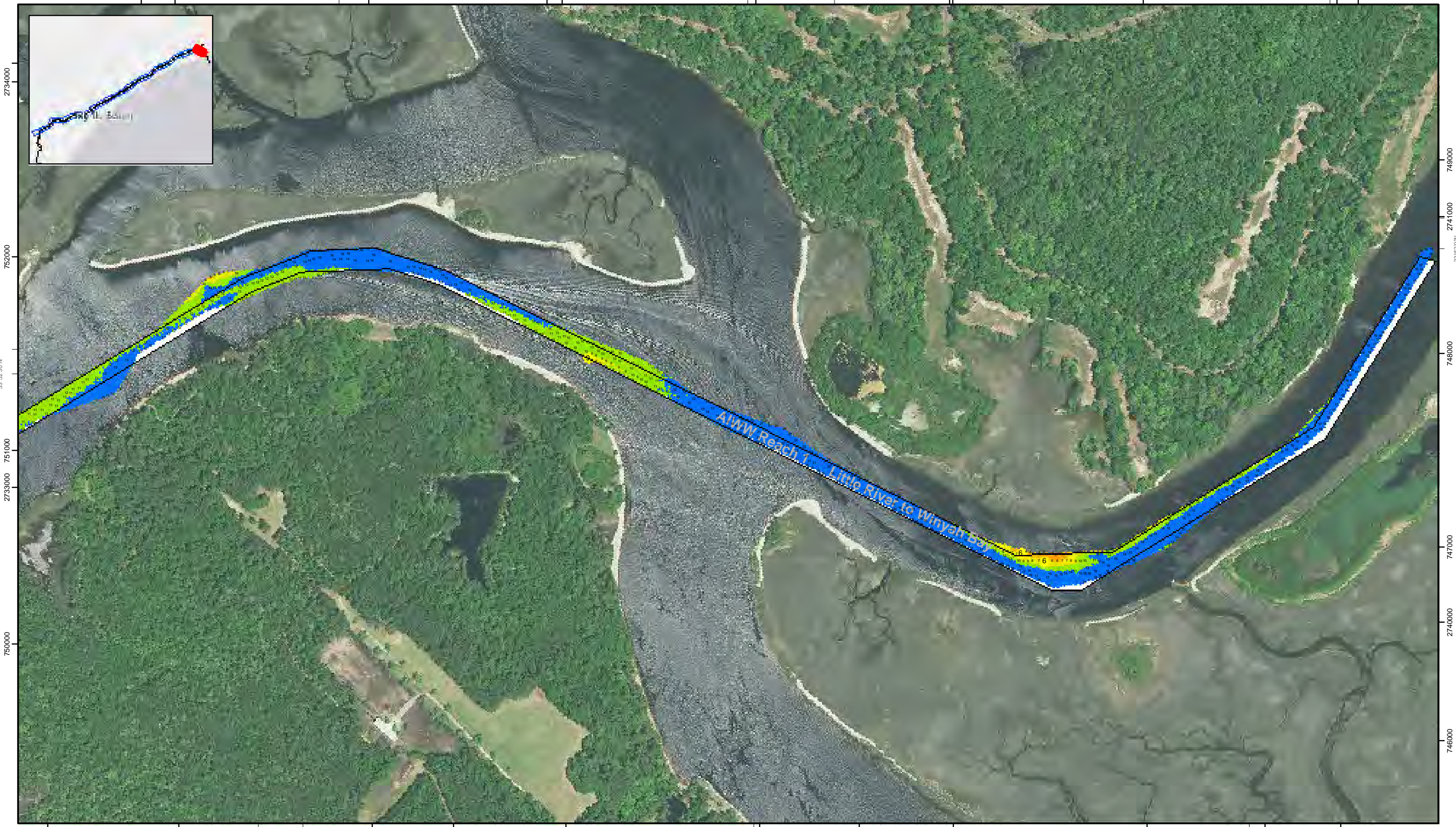


753000 2735000 78°34'30"W 2736000 2737000 33°52'30"N 2738000 78°34'0"W 2739000 2740000 78°33'30"W 2741000



749000 2733000 78°35'0"W 33°52'0"N 2734000 748000 2735000 78°34'30"W 2736000 747000 2737000 2738000 746000 2739000 78°34'0"W

**Atlantic Intercoastal Waterway (AIWW) Channel Survey**  
 The information depicted on this map represents the results of surveys made on the dates indicated and can only be considered as indicating the general conditions existing at that time.  
 Concluded on: **03 NOVEMBER 2017**  
 Little River, SC to Bucksport, SC

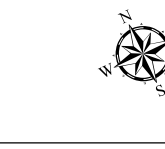
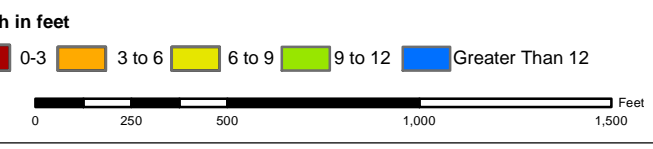
U.S. ARMY ENGINEER DISTRICT CORPS OF ENGINEERS CHARLESTON, SOUTH CAROLINA	Designed By: <b>eHydro Software v3.82</b>	Survey Date: <b>03 NOV 2017</b>	Production Date: <b>13 NOV 2017</b>
SPATIAL DATA BRANCH 69A HAGOOD AVE CHARLESTON, SC 29403 CESAC-GIS@USACE.ARMY.MIL	Reviewed By: <b>CCW</b>	Absolute Scale: <b>1:6,000</b>	Project Reference Number: <b>CESAC-PRA-0001</b>
	Reference Scale: <b>1 inch = 500 feet</b>	Survey Type: <b>CONDITION</b>	
	Projection: <b>NAD 1983 StatePlane South Carolina FIPS 3900 Feet</b>		

**Shoalest Sounding**  
 ● Sounding  
 Sounding may cover several point areas and is calculated per reach quarter area  
 "+" indicates sounding above MLLW

**USCG Beacon**  
 ■ Green  
 ▲ Red  
 □ White

**USCG Buoy**  
 ● Green  
 ● Red  
 ● Coast Guard Racon

○ White  
 ○ Yellow  
 ○ USCG Light



**Production Notes:**

- The information depicted on this product is for plotting purposes only.
- Vector hydrographic data derived from surveys conducted by the USACE and approved partners.
- Soundings are in feet and refer to Mean Lower Low Water (MLLW).
- Raster Background: ArcGIS Online Image Basemap.

In no event shall the U.S. Army Corps of Engineers, Charleston District Office, Spatial Data Branch be liable for direct, indirect, incidental, consequential or special damages of any kind, including, but not limited to, loss of anticipated profits or benefits arising out of use of or reliance on the data.

These data sets have been developed from the best available sources. Although efforts have been made to ensure that the datasets are accurate and reliable, errors and variable conditions originating from physical sources used to develop the data may be reflected in the data supplied.

This product is not intended to be used for navigation.  
 Mariners are encouraged to use all prudent safety measures.



SHEET REFERENCE NUMBER  
**C003**  
 Page 1 of 24



SHEET  
REFERENCE  
NUMBER  
C003  
Page 2 of 24

**Atlantic Intercoastal Waterway (AIWW) Channel Survey**  
The information depicted on this map represents the results of surveys made on the dates indicated and can only be considered as indicating the general conditions existing at that time.  
Concluded on: **03 NOVEMBER 2017**  
Little River, SC to Bucksport, SC

U.S. ARMY ENGINEER DISTRICT  
CORPS OF ENGINEERS  
CHARLESTON, SOUTH CAROLINA  
SPATIAL DATA BRANCH  
69A HAGOOD AVE  
CHARLESTON, SC 29403  
CESAC-GIS@USACE.ARMY.MIL

Designed By: <b>eHydro Software v3.82</b>	Survey Date: <b>03 NOV 2017</b>	Production Date: <b>13 NOV 2017</b>
Reviewed By: <b>CCW</b>	Absolute Scale: <b>1:6,000</b>	Project Reference Number: <b>CESAC-PRA-0001</b>
Reference Scale: <b>1 inch = 500 feet</b>	Survey Type: <b>CONDITION</b>	
Projection: <b>NAD 1983 StatePlane South Carolina FIPS 3900 Feet</b>		

**Shoalest Sounding**  
Sounding may cover several point areas and is calculated per reach quarter area  
"+ " indicates sounding above MLLW

**USCG Beacon**  
Green  
Red  
White

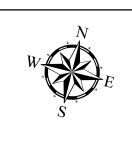
**USCG Buoy**  
Green  
Red  
Coast Guard Racon

**White**  
Yellow  
USCG Light

**Depth in feet**

0-3	3 to 6	6 to 9	9 to 12	Greater Than 12
-----	--------	--------	---------	-----------------

0 250 500 1,000 1,500 Feet



**Production Notes:**  
1. The information depicted on this product is for plotting purposes only.  
2. Vector hydrographic data derived from surveys conducted by the USACE and approved partners.  
3. Soundings are in feet and refer to Mean Lower Low Water (MLLW).  
4. Raster Background: ArcGIS Online Image Basemap

In no event shall the U.S. Army Corps of Engineers, Charleston District Office, Spatial Data Branch be liable for direct, indirect, incidental, consequential or special damages of any kind, including, but not limited to, loss of anticipated profits or benefits arising out of use of or reliance on the data.  
These data sets have been developed from the best available sources. Although efforts have been made to ensure that the datasets are accurate and reliable, errors and variable conditions originating from physical sources used to develop the data may be reflected in the data supplied.  
This product is not intended to be used for navigation.  
Mariners are encouraged to use all prudent safety measures.





2718000 78°38'0"W 748000 2719000 2720000 749000 78°37'30"W 2721000 2722000 750000 78°37'0"W 2723000 2724000 751000



747000  
2718000  
78°38'0"W  
745000  
33°51'30"N  
2719000

751000  
2725000  
750000  
749000  
78°36'30"W  
2726000  
33°52'0"N  
748000  
2719000

272000 2721000 2722000 2723000 2724000 746000 725000 78°36'30"W

**Atlantic Intercoastal Waterway (AIWW) Channel Survey**  
The information depicted on this map represents the results of surveys made on the dates indicated and can only be considered as indicating the general conditions existing at that time.  
Concluded on: **03 NOVEMBER 2017**  
Little River, SC to Bucksport, SC

U.S. ARMY ENGINEER DISTRICT  
CORPS OF ENGINEERS  
CHARLESTON, SOUTH CAROLINA

SPATIAL DATA BRANCH  
69A HAGOOD AVE  
CHARLESTON, SC 29403  
CESAC-GIS@USACE.ARMY.MIL

Designed By: <b>eHydro Software v3.82</b>	Survey Date: <b>03 NOV 2017</b>	Production Date: <b>13 NOV 2017</b>
Reviewed By: <b>CCW</b>	Absolute Scale: <b>1:6,000</b>	Project Reference Number: <b>CESAC-PRA-0001</b>
Reference Scale: <b>1 inch = 500 feet</b>	Survey Type: <b>CONDITION</b>	
Projection: <b>NAD 1983 StatePlane South Carolina FIPS 3900 Feet</b>		

**Shoalest Sounding**  
● Sounding  
Sounding may cover several point areas and is calculated per reach quarter area  
"±" indicates sounding above MLLW

**USCG Beacon**  
■ Green  
▲ Red  
□ White

**USCG Buoy**  
● Green  
● Red  
● Coast Guard Racon

**USCG Light**  
○ White  
○ Yellow

**Depth in feet**

0-3    3 to 6    6 to 9    9 to 12    Greater Than 12

0    250    500    1,000    1,500 Feet



**Production Notes:**  
1. The information depicted on this product is for plotting purposes only.  
2. Vector hydrographic data derived from surveys conducted by the USACE and approved partners.  
3. Soundings are in feet and refer to Mean Lower Low Water (MLLW).  
4. Raster Background: ArcGIS Online Image Basemap

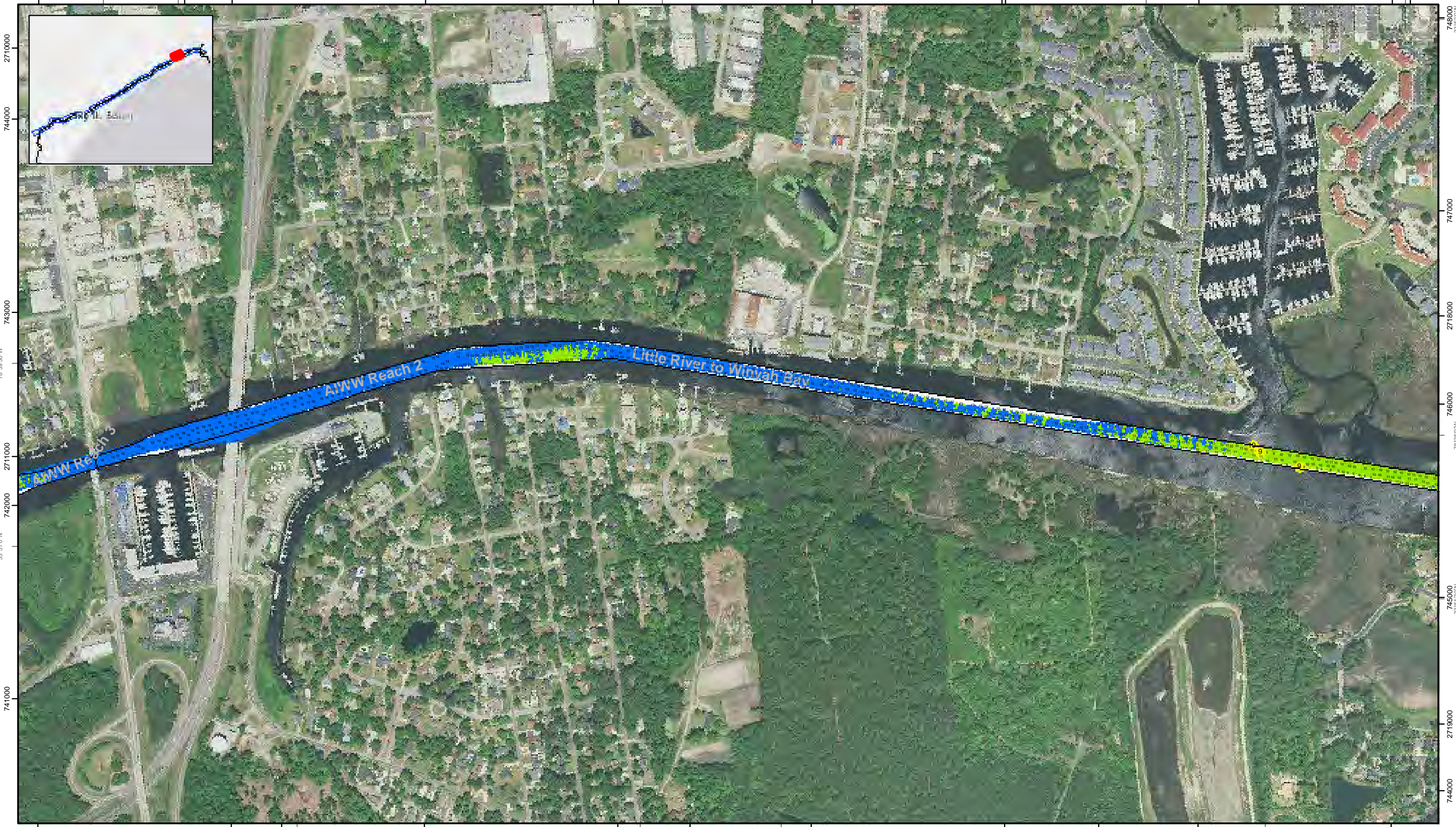
In no event shall the U.S. Army Corps of Engineers, Charleston District Office, Spatial Data Branch be liable for direct, indirect, incidental, consequential or special damages of any kind, including, but not limited to, loss of anticipated profits or benefits arising out of use of or reliance on the data.  
These data sets have been developed from the best available sources. Although efforts have been made to ensure that the datasets are accurate and reliable, errors and variable conditions originating from physical sources used to develop the data may be reflected in the data supplied.  
This product is not intended to be used for navigation.  
Mariners are encouraged to use all prudent safety measures.



SHEET  
REFERENCE  
NUMBER  
C003  
Page 3 of 24



2710000 33°51'30"N 78°39'30"W 745000 2711000 2712000 746000 2713000 78°39'0"W 2714000 2715000 67°38'30"W 2716000 2717000 33°52'0"N



Atlantic Intercoastal Waterway (AIWW) Channel Survey  
 The information depicted on this map represents the results of surveys made on the dates indicated and can only be considered as indicating the general conditions existing at that time.  
 Concluded on: **03 NOVEMBER 2017**  
 Little River, SC to Bucksport, SC

U.S. ARMY ENGINEER DISTRICT  
 CORPS OF ENGINEERS  
 CHARLESTON, SOUTH CAROLINA  
 SPATIAL DATA BRANCH  
 69A HAGOOD AVE  
 CHARLESTON, SC 29403  
 CESAC-GIS@USACE.ARMY.MIL

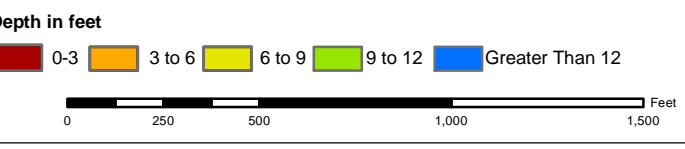
Designed By: eHydro Software v3.82  
 Survey Date: 03 NOV 2017  
 Production Date: 13 NOV 2017  
 Reviewed By: CCW  
 Absolute Scale: 1:6,000  
 Project Reference Number: CESAC-PRA-0001  
 Reference Scale: 1 inch = 500 feet  
 Survey Type: CONDITION  
 Projection: NAD 1983 StatePlane South Carolina FIPS 3900 Feet

**Shoalest Sounding**  
 ● Sounding  
 Sounding may cover several point areas and is calculated per reach quarter area  
 "+" indicates sounding above MLLW

**USCG Beacon**  
 ● Green  
 ● Red  
 ● White

**USCG Buoy**  
 ● Green  
 ● Red  
 ● Coast Guard Racon

● White  
 ● Yellow  
 ● USCG Light



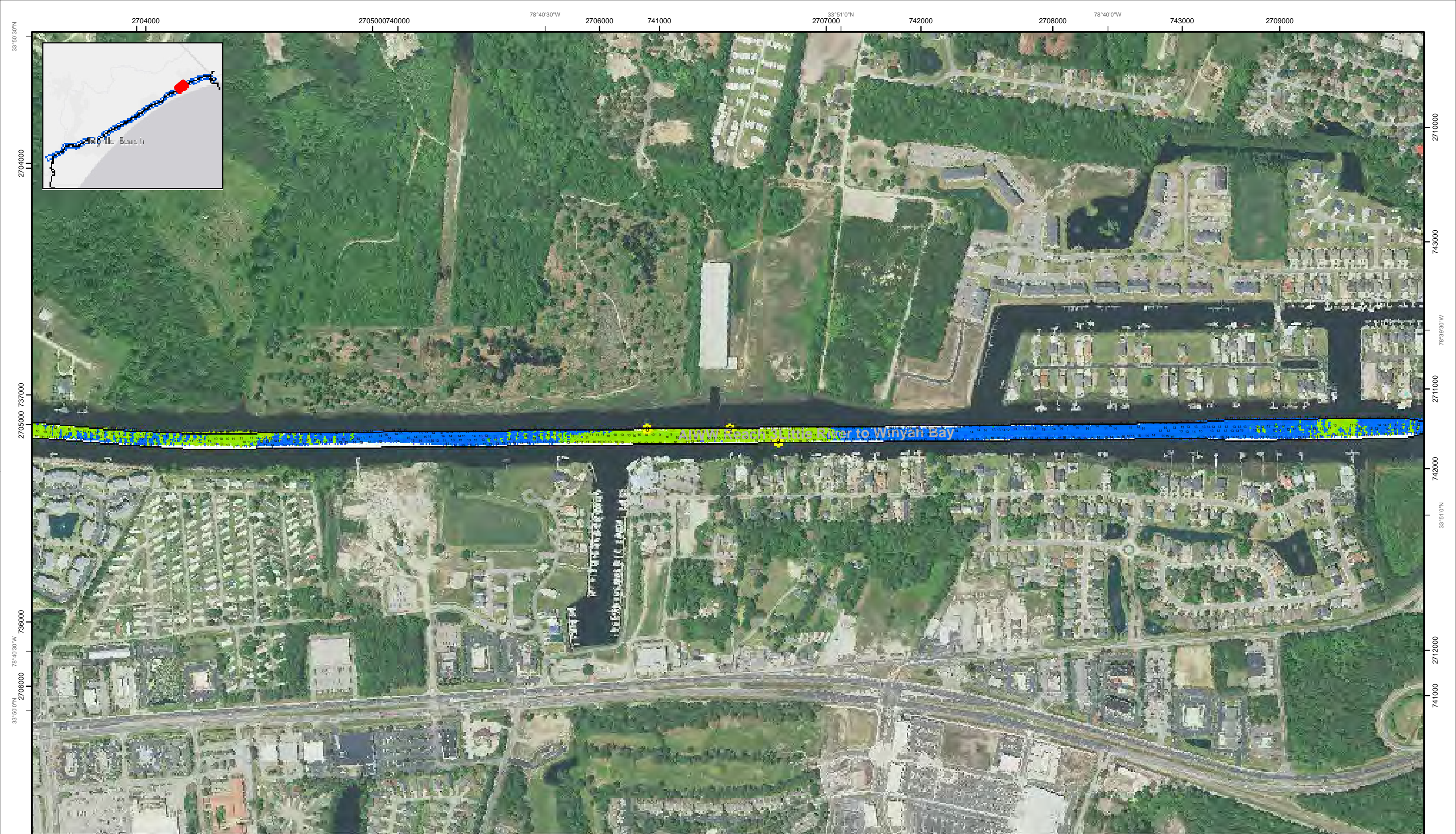
**Production Notes:**  
 1. The information depicted on this product is for plotting purposes only.  
 2. Vector hydrographic data derived from surveys conducted by the USACE and approved partners.  
 3. Soundings are in feet and refer to Mean Lower Low Water (MLLW).  
 4. Raster Background: ArcGIS Online Image Basemap.

In no event shall the U.S. Army Corps of Engineers, Charleston District Office, Spatial Data Branch be liable for direct, indirect, incidental, consequential or special damages of any kind, including, but not limited to, loss of anticipated profits or benefits arising out of use of or reliance on the data.  
 These data sets have been developed from the best available sources. Although efforts have been made to ensure that the datasets are accurate and reliable, errors and variable conditions originating from physical sources used to develop the data may be reflected in the data supplied.  
 This product is not intended to be used for navigation.  
 Mariners are encouraged to use all prudent safety measures.

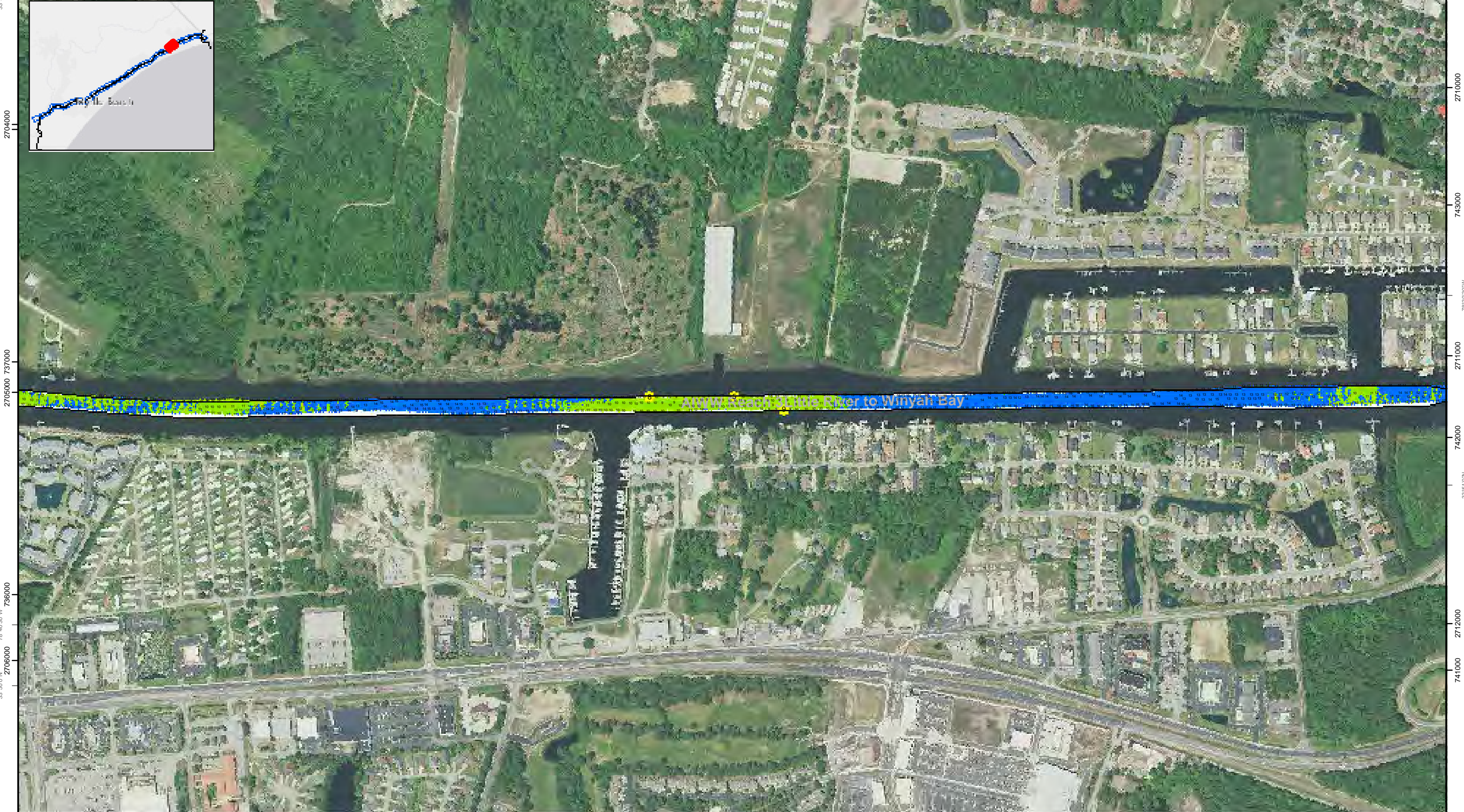


SHEET REFERENCE NUMBER C003 Page 4 of 24





2704000 2705000 2706000 2707000 2708000 2709000 2710000 2711000 2712000 2713000 2714000 2715000 2716000 2717000 2718000 2719000 2720000



2707000 2708000 2709000 2710000 2711000 2712000 2713000 2714000 2715000 2716000 2717000 2718000 2719000 2720000

**Atlantic Intercoastal Waterway (AIWW) Channel Survey**  
 The information depicted on this map represents the results of surveys made on the dates indicated and can only be considered as indicating the general conditions existing at that time.  
 Concluded on: **03 NOVEMBER 2017**  
 Little River, SC to Bucksport, SC

U.S. ARMY ENGINEER DISTRICT  
 CORPS OF ENGINEERS  
 CHARLESTON, SOUTH CAROLINA  
 SPATIAL DATA BRANCH  
 69A HAGOOD AVE  
 CHARLESTON, SC 29403  
 CESAC-GIS@USACE.ARMY.MIL

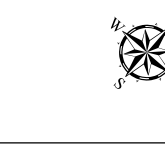
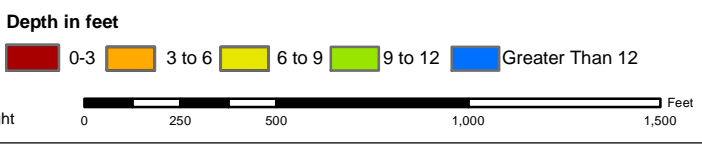
Designed By: <b>eHydro Software v3.82</b>	Survey Date: <b>03 NOV 2017</b>	Production Date: <b>13 NOV 2017</b>
Reviewed By: <b>CCW</b>	Absolute Scale: <b>1:6,000</b>	Project Reference Number: <b>CESAC-PRA-0001</b>
Reference Scale: <b>1 inch = 500 feet</b>	Survey Type: <b>CONDITION</b>	
Projection: <b>NAD 1983 StatePlane South Carolina FIPS 3900 Feet</b>		

**Shoalest Sounding**  
 Sounding may cover several point areas and is calculated per reach quarter area  
 "+" indicates sounding above MLLW

**USCG Beacon**  
 Green  
 Red  
 White

**USCG Buoy**  
 Green  
 Red  
 Coast Guard Racon

**USCG Light**  
 White  
 Yellow



**Production Notes:**

- The information depicted on this product is for plotting purposes only.
- Vector hydrographic data derived from surveys conducted by the USACE and approved partners.
- Soundings are in feet and refer to Mean Lower Low Water (MLLW).
- Raster Background: ArcGIS Online Image Basemap.

In no event shall the U.S. Army Corps of Engineers, Charleston District Office, Spatial Data Branch be liable for direct, indirect, incidental, consequential or special damages of any kind, including, but not limited to, loss of anticipated profits or benefits arising out of use of or reliance on the data.

These data sets have been developed from the best available sources. Although efforts have been made to ensure that the datasets are accurate and reliable, errors and variable conditions originating from physical sources used to develop the data may be reflected in the data supplied.

This product is not intended to be used for navigation.  
 Mariners are encouraged to use all prudent safety measures.



SHEET REFERENCE NUMBER  
**C003**  
 Page 5 of 24



2697000 736000 2698000 78°42'0"W 2699000 737000 2700000 78°41'30"W 2701000 78°41'0"W 2702000 2703000 78°41'0"W 2704000



**Atlantic Intercoastal Waterway (AIWW) Channel Survey**  
 The information depicted on this map represents the results of surveys made on the dates indicated and can only be considered as indicating the general conditions existing at that time.  
 Concluded on: **03 NOVEMBER 2017**  
 Little River, SC to Bucksport, SC

U.S. ARMY ENGINEER DISTRICT  
 CORPS OF ENGINEERS  
 CHARLESTON, SOUTH CAROLINA  
 SPATIAL DATA BRANCH  
 69A HAGOOD AVE  
 CHARLESTON, SC 29403  
 CESAC-GIS@USACE.ARMY.MIL

Designed By: **eHydro Software v3.82**  
 Reviewed By: **CCW**  
 Reference Scale: **1 inch = 500 feet**  
 Projection: **NAD 1983 StatePlane South Carolina FIPS 3900 Feet**

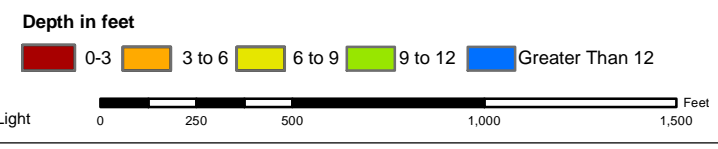
Survey Date: **03 NOV 2017**  
 Production Date: **13 NOV 2017**  
 Project Reference Number: **CESAC-PRA-0001**  
 Survey Type: **CONDITION**

**Shoalest Sounding**  
 ● Sounding  
 Sounding may cover several point areas and is calculated per reach quarter area  
 "+" indicates sounding above MLLW

**USCG Beacon**  
 ■ Green  
 ▲ Red  
 □ White

**USCG Buoy**  
 ● Green  
 ● Red  
 ● Coast Guard Racon

**USCG Light**  
 ● White  
 ● Yellow

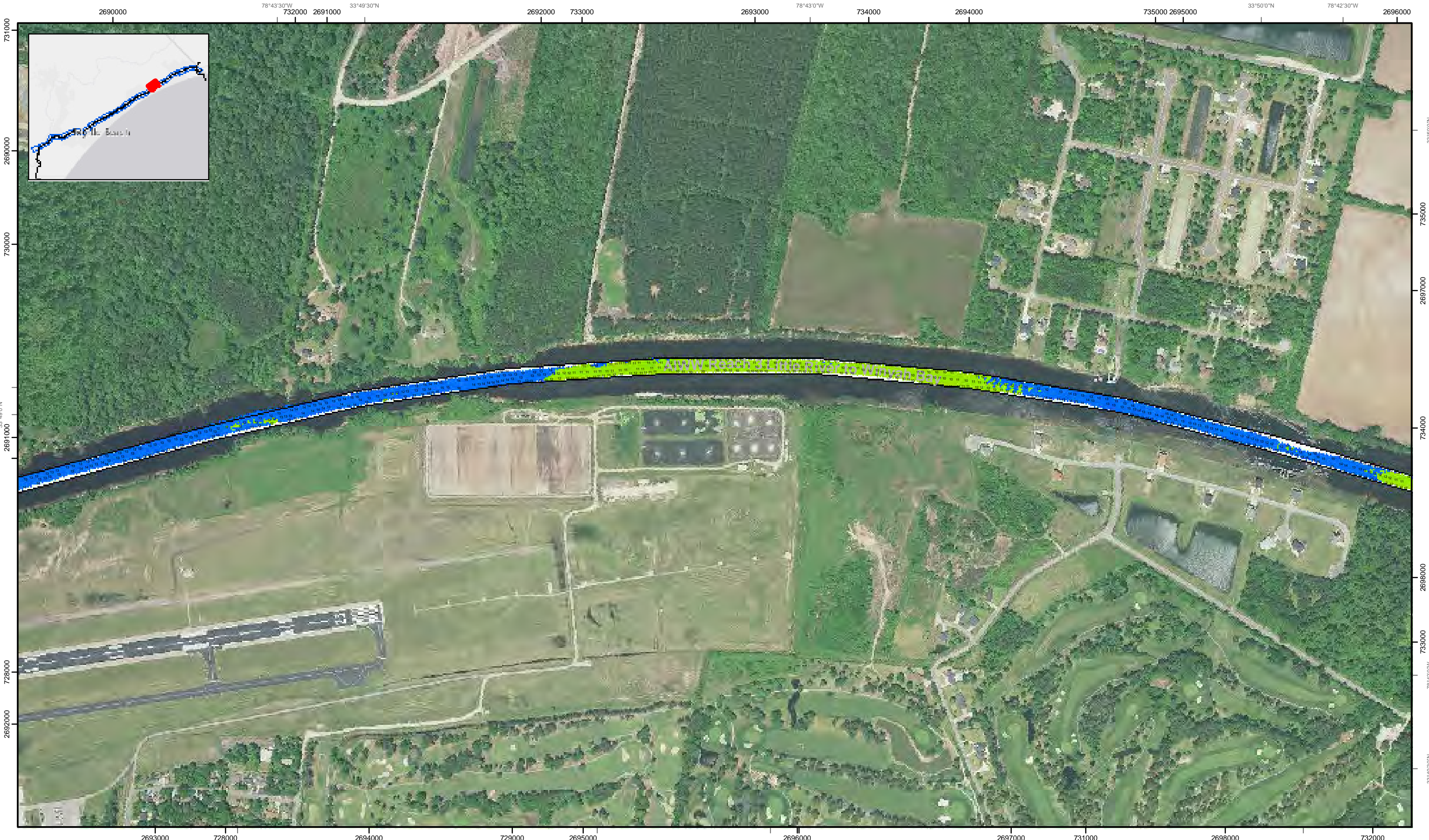


**Production Notes:**  
 1. The information depicted on this product is for plotting purposes only.  
 2. Vector hydrographic data derived from surveys conducted by the USACE and approved partners.  
 3. Soundings are in feet and refer to Mean Lower Low Water (MLLW).  
 4. Raster Background: ArcGIS Online Image Basemap.  
 In no event shall the U.S. Army Corps of Engineers, Charleston District Office, Spatial Data Branch be liable for direct, indirect, incidental, consequential or special damages of any kind, including, but not limited to, loss of anticipated profits or benefits arising out of use of or reliance on the data.  
 These data sets have been developed from the best available sources. Although efforts have been made to ensure that the datasets are accurate and reliable, errors and variable conditions originating from physical sources used to develop the data may be reflected in the data supplied.  
 This product is not intended to be used for navigation.  
 Mariners are encouraged to use all prudent safety measures.



SHEET REFERENCE NUMBER  
**C003**  
 Page 6 of 24





**Atlantic Intercoastal Waterway (AIWW) Channel Survey**  
 The information depicted on this map represents the results of surveys made on the dates indicated and can only be considered as indicating the general conditions existing at that time.  
 Concluded on: **03 NOVEMBER 2017**  
 Little River, SC to Bucksport, SC

U.S. ARMY ENGINEER DISTRICT  
 CORPS OF ENGINEERS  
 CHARLESTON, SOUTH CAROLINA  
 SPATIAL DATA BRANCH  
 69A HAGOOD AVE  
 CHARLESTON, SC 29403  
 CESAC-GIS@USACE.ARMY.MIL

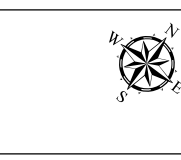
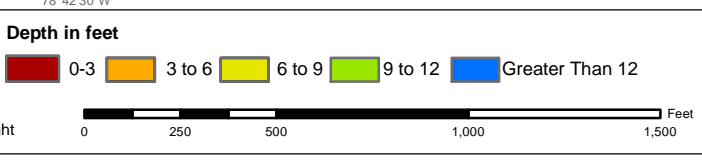
Designed By: <b>eHydro Software v3.8.2</b>	Survey Date: <b>03 NOV 2017</b>	Production Date: <b>13 NOV 2017</b>
Reviewed By: <b>CCW</b>	Absolute Scale: <b>1:6,000</b>	Project Reference Number: <b>CESAC-PRA-0001</b>
Reference Scale: <b>1 inch = 500 feet</b>	Survey Type: <b>CONDITION</b>	
Projection: <b>NAD 1983 StatePlane South Carolina FIPS 3900 Feet</b>		

**Shoalest Sounding**  
 ● Sounding  
*Sounding may cover several point areas and is calculated per reach quarter area*  
 "+" indicates sounding above MLLW

**USCG Beacon**  
 ● Green  
 ▲ Red  
 □ White

**USCG Buoy**  
 ● Green  
 ● Red  
 ● Coast Guard Racon

**USCG Light**  
 ● White  
 ● Yellow



**Production Notes:**  
 1. The information depicted on this product is for plotting purposes only.  
 2. Vector hydrographic data derived from surveys conducted by the USACE and approved partners.  
 3. Soundings are in feet and refer to Mean Lower Low Water (MLLW).  
 4. Raster Background: ArcGIS Online Image Basemap.

In no event shall the U.S. Army Corps of Engineers, Charleston District Office, Spatial Data Branch be liable for direct, indirect, incidental, consequential or special damages of any kind, including, but not limited to, loss of anticipated profits or benefits arising out of use of or reliance on the data.  
 These data sets have been developed from the best available sources. Although efforts have been made to ensure that the datasets are accurate and reliable, errors and variable conditions originating from physical sources used to develop the data may be reflected in the data supplied.  
 This product is not intended to be used for navigation.  
 Mariners are encouraged to use all prudent safety measures.



SHEET  
 REFERENCE  
 NUMBER  
**C003**  
 Page 7 of 24

2684000 726000 2685000 727000 2686000 728000 2687000 2688000 729000 2689000 730000 2690000



SHEET REFERENCE NUMBER  
C003  
Page 8 of 24

**Atlantic Intercoastal Waterway (AIWW) Channel Survey**  
The information depicted on this map represents the results of surveys made on the dates indicated and can only be considered as indicating the general conditions existing at that time.  
Concluded on: **03 NOVEMBER 2017**  
Little River, SC to Bucksport, SC

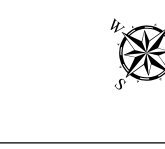
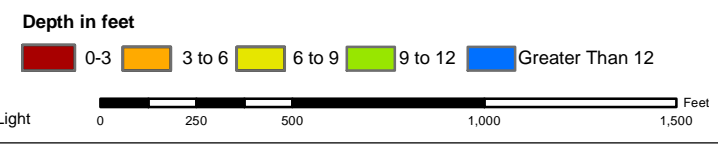
U.S. ARMY ENGINEER DISTRICT CORPS OF ENGINEERS CHARLESTON, SOUTH CAROLINA	Designed By: <b>eHydro Software v3.82</b>	Survey Date: <b>03 NOV 2017</b>	Production Date: <b>13 NOV 2017</b>
SPATIAL DATA BRANCH 69A HAGOOD AVE CHARLESTON, SC 29403 CESAC-GIS@USACE.ARMY.MIL	Reviewed By: <b>CCW</b>	Absolute Scale: <b>1:6,000</b>	Project Reference Number: <b>CESAC-PRA-0001</b>
	Reference Scale: <b>1 inch = 500 feet</b>	Survey Type: <b>CONDITION</b>	
	Projection: <b>NAD 1983 StatePlane South Carolina FIPS 3900 Feet</b>		

**Shoalest Sounding**  
● Sounding  
Sounding may cover several point areas and is calculated per reach quarter area  
"+ " indicates sounding above MLLW

**USCG Beacon**  
■ Green  
■ Red  
■ White

**USCG Buoy**  
● Green  
● Red  
● Coast Guard Racon

○ White  
○ Yellow  
○ USCG Light

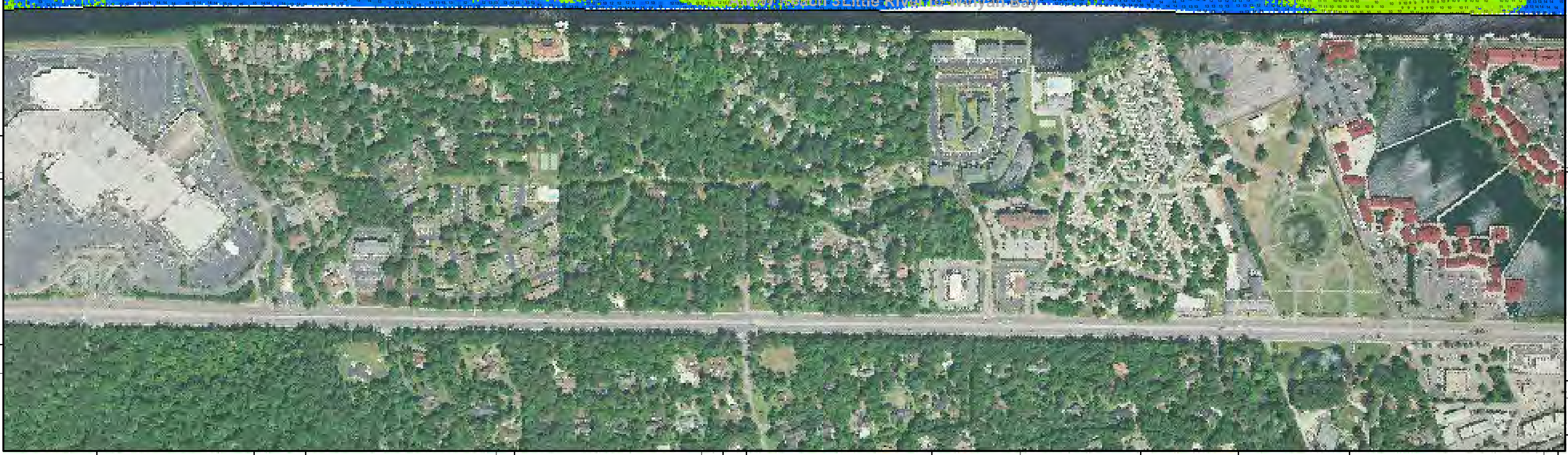


**Production Notes:**  
1. The information depicted on this product is for plotting purposes only.  
2. Vector hydrographic data derived from surveys conducted by the USACE and approved partners.  
3. Soundings are in feet and refer to Mean Lower Low Water (MLLW).  
4. Raster Background: ArcGIS Online Image Basemap.

In no event shall the U.S. Army Corps of Engineers, Charleston District Office, Spatial Data Branch be liable for direct, indirect, incidental, consequential or special damages of any kind, including, but not limited to, loss of anticipated profits or benefits arising out of use of or reliance on the data.  
These data sets have been developed from the best available sources. Although efforts have been made to ensure that the datasets are accurate and reliable, errors and variable conditions originating from physical sources used to develop the data may be reflected in the data supplied.  
This product is not intended to be used for navigation.  
Mariners are encouraged to use all prudent safety measures.







SHEET REFERENCE NUMBER <b>C003</b> Page 9 of 24	<b>Atlantic Intercoastal Waterway (AIWW) Channel Survey</b> The information depicted on this map represents the results of surveys made on the dates indicated and can only be considered as indicating the general conditions existing at that time. Concluded on: <b>03 NOVEMBER 2017</b> Little River, SC to Bucksport, SC	U.S. ARMY ENGINEER DISTRICT CORPS OF ENGINEERS CHARLESTON, SOUTH CAROLINA  SPATIAL DATA BRANCH 69A HAGOOD AVE CHARLESTON, SC 29403 CESAC-GIS@USACE.ARMY.MIL	Designed By: <b>eHydro Software v3.82</b> Reviewed By: <b>CCW</b> Reference Scale: <b>1 inch = 500 feet</b> Projection: <b>NAD 1983 StatePlane South Carolina FIPS 3900 Feet</b>	Survey Date: <b>03 NOV 2017</b> Project Reference Number: <b>CESAC-PRA-0001</b> Survey Type: <b>CONDITION</b>	Production Date: <b>13 NOV 2017</b>	
	<b>Shoalest Sounding</b> Sounding may cover several point areas and is calculated per reach quarter area "+" indicates sounding above MLLW	<b>USCG Beacon</b> Green Red White	<b>USCG Buoy</b> Green Red Coast Guard Racon	White Yellow USCG Light	<b>Depth in feet</b> 0-3 3 to 6 6 to 9 9 to 12 Greater Than 12	0 250 500 1,000 1,500 Feet
	<b>Production Notes:</b> 1. The information depicted on this product is for plotting purposes only. 2. Vector hydrographic data derived from surveys conducted by the USACE and approved partners. 3. Soundings are in feet and refer to Mean Lower Low Water (MLLW). 4. Raster Background: ArcGIS Online Image Basemap. In no event shall the U.S. Army Corps of Engineers, Charleston District Office, Spatial Data Branch be liable for direct, indirect, incidental, consequential or special damages of any kind, including, but not limited to, loss of anticipated profits or benefits arising out of use of or reliance on the data. These data sets have been developed from the best available sources. Although efforts have been made to ensure that the datasets are accurate and reliable, errors and variable conditions originating from physical sources used to develop the data may be reflected in the data supplied. This product is not intended to be used for navigation. Mariners are encouraged to use all prudent safety measures.					
	U.S. Army Corps of Engineers Charleston District					

720000 2677000  
721000  
720000  
720000  
719000  
78°46'0"W

2685000  
2686000  
723000  
722000  
2686000  
78°44'30"W



718000 2670000 78°47'30"W 2671000 719000 2672000 33°47'30"N 720000 2673000 78°47'0"W 2674000 2675000 722000 78°46'30"W 2676000



717000 33°47'0"N 78°47'30"W 716000 2671000 715000 2672000 714000 2673000 713000 2674000 712000 2675000 711000 2676000 71000 2677000 709000 2678000 708000 2679000 33°47'30"N 2679000 719000

SHEET REFERENCE NUMBER C003 Page 10 of 24

**Atlantic Intercoastal Waterway (AIWW) Channel Survey**  
 The information depicted on this map represents the results of surveys made on the dates indicated and can only be considered as indicating the general conditions existing at that time.  
 Concluded on: **03 NOVEMBER 2017**  
 Little River, SC to Bucksport, SC

U.S. ARMY ENGINEER DISTRICT CORPS OF ENGINEERS CHARLESTON, SOUTH CAROLINA  
 SPATIAL DATA BRANCH 69A HAGOOD AVE CHARLESTON, SC 29403  
 CESAC-GIS@USACE.ARMY.MIL

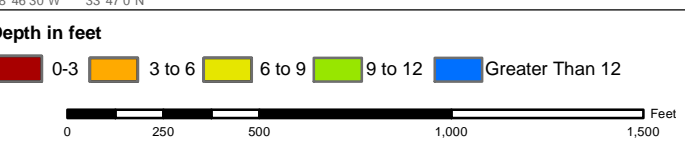
Designed By: eHydro Software v3.82	Survey Date: 03 NOV 2017	Production Date: 13 NOV 2017
Reviewed By: CCW	Absolute Scale: 1:6,000	Project Reference Number: CESAC-PRA-0001
Reference Scale: 1 inch = 500 feet	Survey Type: CONDITION	
Projection: NAD 1983 StatePlane South Carolina FIPS 3900 Feet		

**Shoalest Sounding**  
 Sounding may cover several point areas and is calculated per reach quarter area  
 "+" indicates sounding above MLLW

**USCG Beacon**  
 Green  
 White

**USCG Buoy**  
 Green  
 Red  
 Coast Guard Racon

**USCG Light**  
 White  
 Yellow



**Production Notes:**  
 1. The information depicted on this product is for plotting purposes only.  
 2. Vector hydrographic data derived from surveys conducted by the USACE and approved partners.  
 3. Soundings are in feet and refer to Mean Lower Low Water (MLLW).  
 4. Raster Background: ArcGIS Online Image Basemap.

In no event shall the U.S. Army Corps of Engineers, Charleston District Office, Spatial Data Branch be liable for direct, indirect, incidental, consequential or special damages of any kind, including, but not limited to, loss of anticipated profits or benefits arising out of use of or reliance on the data.  
 These data sets have been developed from the best available sources. Although efforts have been made to ensure that the datasets are accurate and reliable, errors and variable conditions originating from physical sources used to develop the data may be reflected in the data supplied.  
 This product is not intended to be used for navigation.  
 Mariners are encouraged to use all prudent safety measures.





78°49'0"W 713000 33°46'30"N 2664000 714000 2665000 78°48'30"W 2666000 2667000 716000 33°47'0"N 2668000 78°48'0"W 717000 2669000



10 11 12 13 14 15 16 17 18 19 20 21 22 23 24 25 26 27 28 29 30 31 32 33 34 35 36 37 38 39 40 41 42 43 44 45 46 47 48 49 50 51 52 53 54 55 56 57 58 59 60 61 62 63 64 65 66 67 68 69 70 71 72 73 74 75 76 77 78 79 80 81 82 83 84 85 86 87 88 89 90 91 92 93 94 95 96 97 98 99 100



2667000 33°46'0"N 2668000 711000 2669000 712000 2670000 712000 2670000 78°47'30"W 2671000 33°46'30"N 2672000 714000

**Atlantic Intercoastal Waterway (AIWW) Channel Survey**  
 The information depicted on this map represents the results of surveys made on the dates indicated and can only be considered as indicating the general conditions existing at that time.  
 Concluded on: **03 NOVEMBER 2017**  
 Little River, SC to Bucksport, SC

U.S. ARMY ENGINEER DISTRICT  
 CORPS OF ENGINEERS  
 CHARLESTON, SOUTH CAROLINA  
 SPATIAL DATA BRANCH  
 69A HAGOOD AVE  
 CHARLESTON, SC 29403  
 CESAC-GIS@USACE.ARMY.MIL

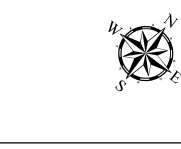
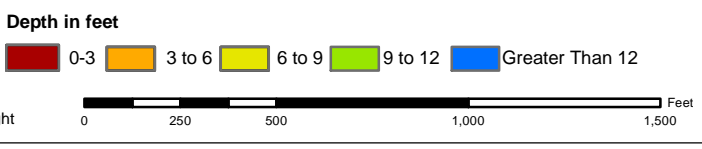
Designed By: <b>eHydro Software v3.82</b>	Survey Date: <b>03 NOV 2017</b>	Production Date: <b>13 NOV 2017</b>
Reviewed By: <b>CCW</b>	Absolute Scale: <b>1:6,000</b>	Project Reference Number: <b>CESAC-PRA-0001</b>
Reference Scale: <b>1 inch = 500 feet</b>	Survey Type: <b>CONDITION</b>	
Projection: <b>NAD 1983 StatePlane South Carolina FIPS 3900 Feet</b>		

**Shoalest Sounding**  
 ● Sounding  
 Sounding may cover several point areas and is calculated per reach quarter area  
 "+" indicates sounding above MLLW

**USCG Beacon**  
 ● Green  
 ▲ Red  
 □ White

**USCG Buoy**  
 ● Green  
 ● Red  
 ● Coast Guard Racon

**USCG Light**  
 ● White  
 ● Yellow



**Production Notes:**

- The information depicted on this product is for plotting purposes only.
- Vector hydrographic data derived from surveys conducted by the USACE and approved partners.
- Soundings are in feet and refer to Mean Lower Low Water (MLLW).
- Raster Background: Aerial Online Image Basemap.

In no event shall the U.S. Army Corps of Engineers, Charleston District Office, Spatial Data Branch be liable for direct, indirect, incidental, consequential or special damages of any kind, including, but not limited to, loss of anticipated profits or benefits arising out of use of or reliance on the data.  
 These data sets have been developed from the best available sources. Although efforts have been made to ensure that the datasets are accurate and reliable, errors and variable conditions originating from physical sources used to develop the data may be reflected in the data supplied.  
 This product is not intended to be used for navigation.  
 Mariners are encouraged to use all prudent safety measures.



SHEET REFERENCE NUMBER  
**C003**  
 Page 11 of 24



2657000 709000 2658000 78°50'0"W 2659000 710000 33°46'0"N 2660000 711000 78°49'30"W 2661000 2662000 2663000 78°49'0"W



2657000  
707000  
2658000  
706000  
2659000  
705000  
2660000

2664000  
712000  
2665000  
710000  
2666000  
708000  
2667000

2660000 705000 2661000 78°49'30"W 706000 2662000 706000 2663000 78°49'0"W 33°45'30"N 2664000 708000 2665000 2666000 78°48'30"W

SHEET  
REFERENCE  
NUMBER  
C003  
Page 12 of 24

**Atlantic Interoceanic Waterway (AIWW)  
Channel Survey**  
The information depicted on this map represents the results of surveys made on the dates indicated and can only be considered as indicating the general conditions existing at that time.  
Concluded on: **03 NOVEMBER 2017**  
Little River, SC to Bucksport, SC

U.S. ARMY ENGINEER DISTRICT  
CORPS OF ENGINEERS  
CHARLESTON, SOUTH CAROLINA  
SPATIAL DATA BRANCH  
69A HAGOOD AVE  
CHARLESTON, SC 29403  
CESAC-GIS@USACE.ARMY.MIL

Designed By: **eHydro Software v3.82**  
Reviewed By: **CCW**  
Reference Scale: **1 inch = 500 feet**  
Projection: **NAD 1983 StatePlane South Carolina FIPS 3900 Feet**

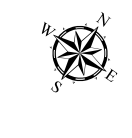
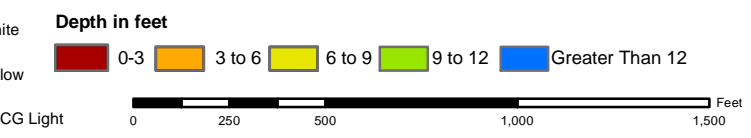
Survey Date: **03 NOV 2017**  
Production Date: **13 NOV 2017**  
Project Reference Number: **CESAC-PRA-0001**  
Survey Type: **CONDITION**

**Shoalest Sounding**  
Sounding may cover several point areas and is calculated per reach quarter area  
"±" indicates sounding above MLLW

**USCG Beacon**  
Green  
Red  
White

**USCG Buoy**  
Green  
Red  
Coast Guard Racon

**USCG Light**  
White  
Yellow



**Production Notes:**  
1. The information depicted on this product is for plotting purposes only.  
2. Vector hydrographic data derived from surveys conducted by the USACE and approved partners.  
3. Soundings are in feet and refer to Mean Lower Low Water (MLLW).  
4. Raster Background: ArcGIS Online Image Basemap.

In no event shall the U.S. Army Corps of Engineers, Charleston District Office, Spatial Data Branch be liable for direct, indirect, incidental, consequential or special damages of any kind, including, but not limited to, loss of anticipated profits or benefits arising out of use of or reliance on the data.  
These data sets have been developed from the best available sources. Although efforts have been made to ensure that the datasets are accurate and reliable, errors and variable conditions originating from physical sources used to develop the data may be reflected in the data supplied.  
This product is not intended to be used for navigation.  
Mariners are encouraged to use all prudent safety measures.





2650000 705000 78°51'30"W 2651000 2652000 706000 2653000 78°51'0"W 2654000 707000 33°45'30"N 2655000 708000 78°50'30"W 708000 2656000



AIWW Reach 5 The Little River Waterway AIWW Reach 4



2653000 33°44'30"N 78°51'0"W 2654000 702000 2655000 703000 2656000 78°50'30"W 2657000 2658000 704000 78°50'0"W 33°45'0"N 2659000

SHEET  
REFERENCE  
NUMBER  
C003  
Page 13 of 24

**Atlantic Intercoastal Waterway (AIWW)  
Channel Survey**  
The information depicted on this map represents the results of surveys made on the dates indicated and can only be considered as indicating the general conditions existing at that time.  
Concluded on: **03 NOVEMBER 2017**  
Little River, SC to Bucksport, SC

U.S. ARMY ENGINEER DISTRICT  
CORPS OF ENGINEERS  
CHARLESTON, SOUTH CAROLINA  
SPATIAL DATA BRANCH  
69A HAGOOD AVE  
CHARLESTON, SC 29403  
CESAC-GIS@USACE.ARMY.MIL

Designed By: <b>eHydro Software v3.82</b>	Survey Date: <b>03 NOV 2017</b>	Production Date: <b>13 NOV 2017</b>
Reviewed By: <b>CCW</b>	Absolute Scale: <b>1:6,000</b>	Project Reference Number: <b>CESAC-PRA-0001</b>
Reference Scale: <b>1 inch = 500 feet</b>	Survey Type: <b>CONDITION</b>	
Projection: <b>NAD 1983 StatePlane South Carolina FIPS 3900 Feet</b>		

**Shoalest Sounding**  
● Sounding  
Sounding may cover several point areas and is calculated per reach quarter area  
"+ " indicates sounding above MLLW

**USCG Beacon**  
■ Green  
▲ Red  
□ White

**USCG Buoy**  
● Green  
● Red  
● Coast Guard Racon

○ White  
○ Yellow  
○ USCG Light

**Depth in feet**

0-3	3 to 6	6 to 9	9 to 12	Greater Than 12
-----	--------	--------	---------	-----------------

0 250 500 1,000 1,500 Feet

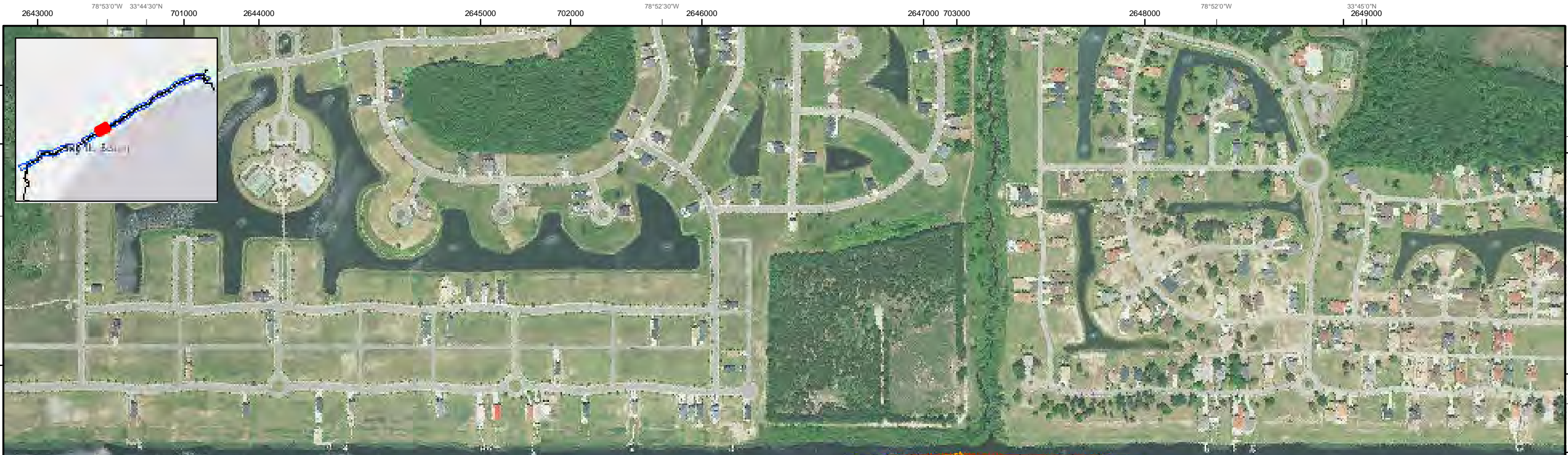


**Production Notes:**  
1. The information depicted on this product is for plotting purposes only.  
2. Vector hydrographic data derived from surveys conducted by the USACE and approved partners.  
3. Soundings are in feet and refer to Mean Lower Low Water (MLLW).  
4. Raster Background: ArcGIS Online Image Basemap.

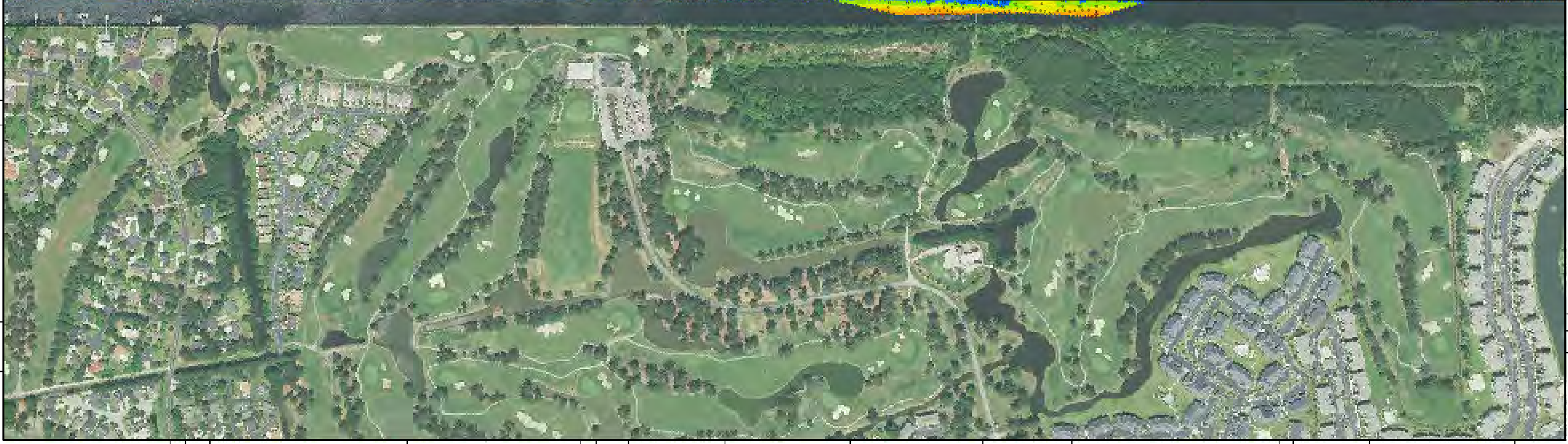
In no event shall the U.S. Army Corps of Engineers, Charleston District Office, Spatial Data Branch be liable for direct, indirect, incidental, consequential or special damages of any kind, including, but not limited to, loss of anticipated profits or benefits arising out of use of or reliance on the data.  
These data sets have been developed from the best available sources. Although efforts have been made to ensure that the datasets are accurate and reliable, errors and variable conditions originating from physical sources used to develop the data may be reflected in the data supplied.  
This product is not intended to be used for navigation.  
Mariners are encouraged to use all prudent safety measures.







AIWW Reach 5 Little River to Winyah Bay



78°53'0"W 78°52'0"W 78°51'30"W 78°51'0"W 78°50'30"W 78°50'0"W

SHEET REFERENCE NUMBER  
C003  
Page 14 of 24

**Atlantic Intercoastal Waterway (AIWW) Channel Survey**  
The information depicted on this map represents the results of surveys made on the dates indicated and can only be considered as indicating the general conditions existing at that time.  
Concluded on: **03 NOVEMBER 2017**  
Little River, SC to Bucksport, SC

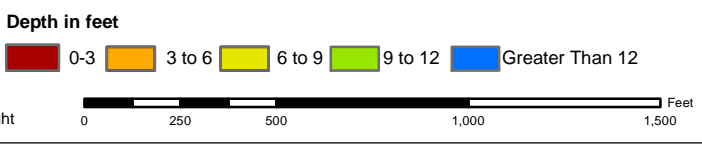
U.S. ARMY ENGINEER DISTRICT CORPS OF ENGINEERS CHARLESTON, SOUTH CAROLINA	Designed By: <b>eHydro Software v3.82</b>	Survey Date: <b>03 NOV 2017</b>	Production Date: <b>13 NOV 2017</b>
SPATIAL DATA BRANCH 69A HAGOOD AVE CHARLESTON, SC 29403	Reviewed By: <b>CCW</b>	Absolute Scale: <b>1:6,000</b>	Project Reference Number: <b>CESAC-PRA-0001</b>
CESAC-GIS@USACE.ARMY.MIL	Reference Scale: <b>1 inch = 500 feet</b>	Survey Type: <b>CONDITION</b>	
	Projection: <b>NAD 1983 StatePlane South Carolina FIPS 3900 Feet</b>		

**Shoalest Sounding**  
● Sounding  
Sounding may cover several point areas and is calculated per reach quarter area  
"+ " indicates sounding above MLLW

**USCG Beacon**  
■ Green  
▲ Red  
□ White

**USCG Buoy**  
● Green  
● Red  
● Coast Guard Racon

○ White  
○ Yellow  
○ USCG Light



**Production Notes:**

- The information depicted on this product is for plotting purposes only.
- Vector hydrographic data derived from surveys conducted by the USACE and approved partners.
- Soundings are in feet and refer to Mean Lower Low Water (MLLW).
- Raster Background: ArcGIS Online Image Basemap.

In no event shall the U.S. Army Corps of Engineers, Charleston District Office, Spatial Data Branch be liable for direct, indirect, incidental, consequential or special damages of any kind, including, but not limited to, loss of anticipated profits or benefits arising out of use of or reliance on the data.  
These data sets have been developed from the best available sources. Although efforts have been made to ensure that the datasets are accurate and reliable, errors and variable conditions originating from physical sources used to develop the data may be reflected in the data supplied.  
This product is not intended to be used for navigation.  
Mariners are encouraged to use all prudent safety measures.



2636000 697000 2637000 33°44'0"N 2638000 78°54'0"W 698000 2639000 2640000 699000 78°53'30"W 2641000 2642000



AIWW Reach 5 Little River to Winyah Bay



78°54'0"W 2639000 693000 2640000 694000 2641000 695000 2642000 33°43'30"N 695000 2643000 78°53'0"W 2644000 696000 2645000

SHEET REFERENCE NUMBER C003 Page 15 of 24

**Atlantic Intercoastal Waterway (AIWW) Channel Survey**  
 The information depicted on this map represents the results of surveys made on the dates indicated and can only be considered as indicating the general conditions existing at that time.  
 Concluded on: **03 NOVEMBER 2017**  
 Little River, SC to Bucksport, SC

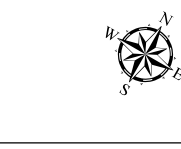
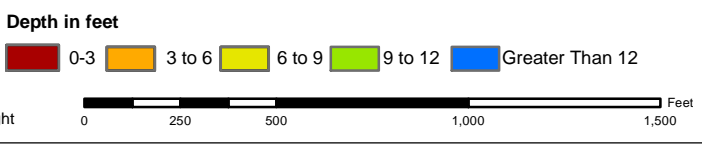
Designed By: eHydro Software v3.82	Survey Date: 03 NOV 2017	Production Date: 13 NOV 2017
Reviewed By: CCW	Absolute Scale: 1:6,000	Project Reference Number: CESAC-PRA-0001
Reference Scale: 1 inch = 500 feet	Survey Type: CONDITION	
Projection: NAD 1983 StatePlane South Carolina FIPS 3900 Feet		

**Shoalest Sounding**  
 Sounding may cover several point areas and is calculated per reach quarter area  
 "+" indicates sounding above MLLW

**USCG Beacon**  
 Green  
 Red

**USCG Buoy**  
 Green  
 Red  
 Coast Guard Racon

**White**  
 Yellow  
 USCG Light



**Production Notes:**

- The information depicted on this product is for plotting purposes only.
- Vector hydrographic data derived from surveys conducted by the USACE and approved partners.
- Soundings are in feet and refer to Mean Lower Low Water (MLLW).
- Raster Background: ArcGIS Online Image Basemap.

In no event shall the U.S. Army Corps of Engineers, Charleston District Office, Spatial Data Branch be liable for direct, indirect, incidental, consequential or special damages of any kind, including, but not limited to, loss of anticipated profits or benefits arising out of use of or reliance on the data.

These data sets have been developed from the best available sources. Although efforts have been made to ensure that the datasets are accurate and reliable, errors and variable conditions originating from physical sources used to develop the data may be reflected in the data supplied.

This product is not intended to be used for navigation. Mariners are encouraged to use all prudent safety measures.

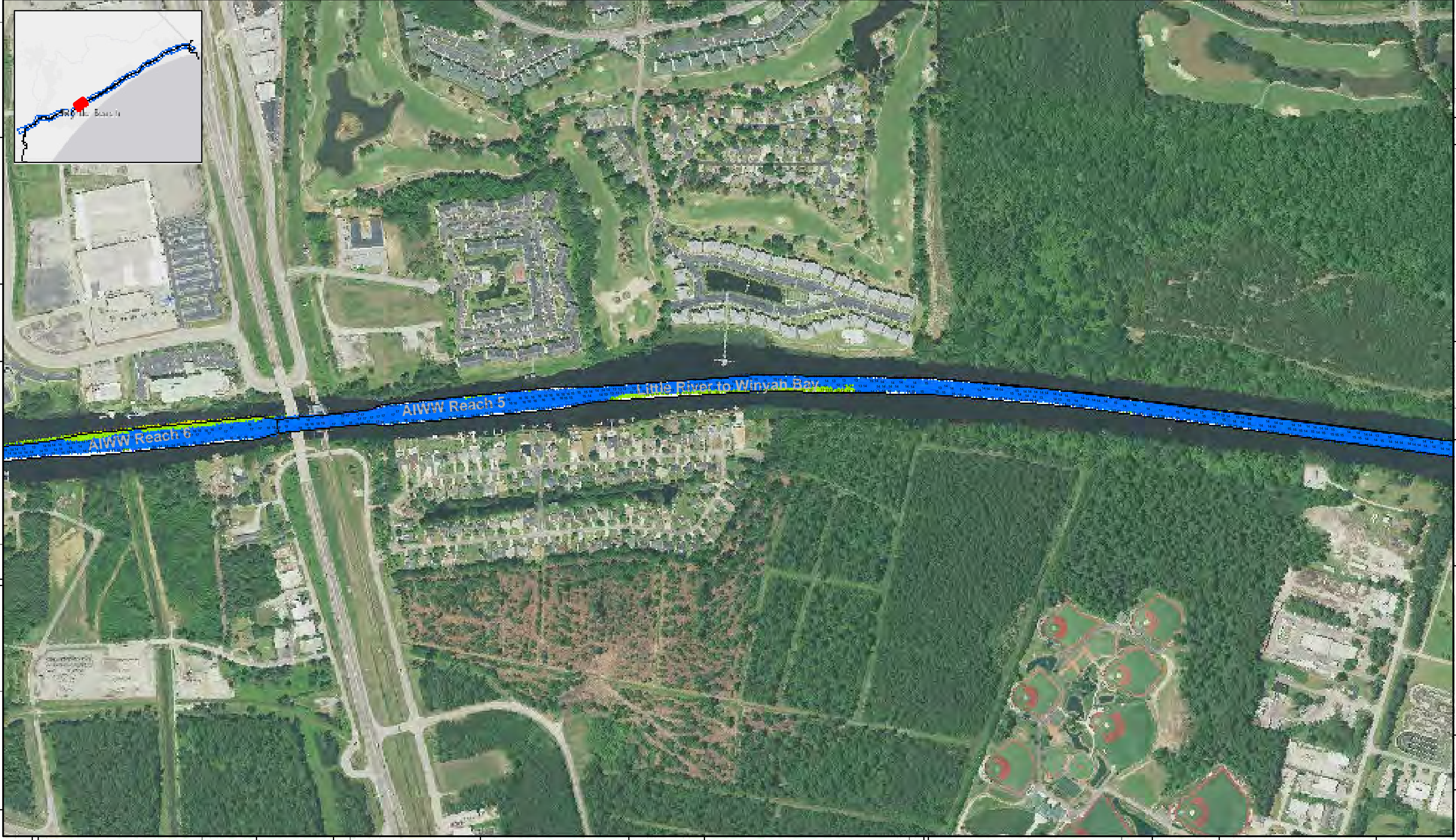
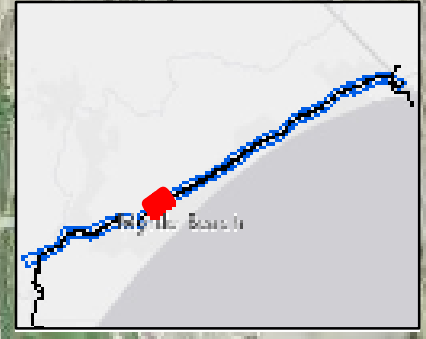




692000 2630000 78°55'30"W 693000 2631000 2632000 694000 33°43'30"N 2633000 78°55'0"W 695000 2634000 696000 2635000

33°43'0"N 691000 2630000 690000 2631000 78°55'30"W 2631000 694000 33°42'30"N 2631000 693000 33°42'30"N 693000 2632000 688000

78°54'30"W 2636000 695000 2637000 33°43'0"N 694000 2638000 693000



SHEET REFERENCE NUMBER  
C003  
Page 16 of 24

**Atlantic Intercoastal Waterway (AIWW) Channel Survey**  
The information depicted on this map represents the results of surveys made on the dates indicated and can only be considered as indicating the general conditions existing at that time.  
Concluded on: **03 NOVEMBER 2017**  
Little River, SC to Bucksport, SC

U.S. ARMY ENGINEER DISTRICT  
CORPS OF ENGINEERS  
CHARLESTON, SOUTH CAROLINA  
SPATIAL DATA BRANCH  
69A HAGOOD AVE  
CHARLESTON, SC 29403  
CESAC-GIS@USACE.ARMY.MIL

Designed By: **eHydro Software v3.82**  
Reviewed By: **CCW**  
Reference Scale: **1 inch = 500 feet**  
Projection: **NAD 1983 StatePlane South Carolina FIPS 3900 Feet**

Survey Date: **03 NOV 2017**  
Production Date: **13 NOV 2017**  
Project Reference Number: **CESAC-PRA-0001**  
Survey Type: **CONDITION**

**Shoalest Sounding**  
Sounding may cover several point areas and is calculated per reach quarter area  
"+ " indicates sounding above MLLW

**USCG Beacon**  
Green  
Red  
White

**USCG Buoy**  
Green  
Red  
Coast Guard Racon

**USCG Light**  
White  
Yellow

**Depth in feet**  
0-3  
3 to 6  
6 to 9  
9 to 12  
Greater Than 12

0 250 500 1,000 1,500 Feet



**Production Notes:**  
1. The information depicted on this product is for plotting purposes only.  
2. Vector hydrographic data derived from surveys conducted by the USACE and approved partners.  
3. Soundings are in feet and refer to Mean Lower Low Water (MLLW).  
4. Raster Background: ArcGIS Online Image Basemap.

In no event shall the U.S. Army Corps of Engineers, Charleston District Office, Spatial Data Branch be liable for direct, indirect, incidental, consequential or special damages of any kind, including, but not limited to, loss of anticipated profits or benefits arising out of use of or reliance on the data.  
These data sets have been developed from the best available sources. Although efforts have been made to ensure that the datasets are accurate and reliable, errors and variable conditions originating from physical sources used to develop the data may be reflected in the data supplied.  
This product is not intended to be used for navigation.  
Mariners are encouraged to use all prudent safety measures.





686000 78°57'0"W 2624000 687000 2625000 688000 78°56'30"W 2626000 689000 2627000 690000 78°56'0"W 2628000 691000 2629000



683000 2627000 2628000 78°56'0"W 2629000 33°42'0"N 2630000 686000 2631000 687000 2632000 688000

**Atlantic Intercoastal Waterway (AIWW) Channel Survey**  
 The information depicted on this map represents the results of surveys made on the dates indicated and can only be considered as indicating the general conditions existing at that time.  
 Concluded on: **03 NOVEMBER 2017**  
 Little River, SC to Bucksport, SC

U.S. ARMY ENGINEER DISTRICT  
 CORPS OF ENGINEERS  
 CHARLESTON, SOUTH CAROLINA  
 SPATIAL DATA BRANCH  
 69A HAGOOD AVE  
 CHARLESTON, SC 29403  
 CESAC-GIS@USACE.ARMY.MIL

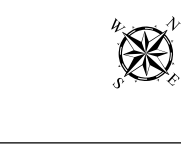
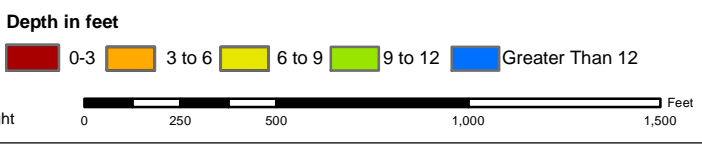
Designed By: <b>eHydro Software v3.82</b>	Survey Date: <b>03 NOV 2017</b>	Production Date: <b>13 NOV 2017</b>
Reviewed By: <b>CCW</b>	Absolute Scale: <b>1:6,000</b>	Project Reference Number: <b>CESAC-PRA-0001</b>
Reference Scale: <b>1 inch = 500 feet</b>	Survey Type: <b>CONDITION</b>	
Projection: <b>NAD 1983 StatePlane South Carolina FIPS 3900 Feet</b>		

**Shoalest Sounding**  
 Sounding may cover several point areas and is calculated per reach quarter area  
 "+" indicates sounding above MLLW

**USCG Beacon**  
 Green  
 Red  
 White

**USCG Buoy**  
 Green  
 Red  
 Coast Guard Racon

**White**  
 Yellow  
 USCG Light



**Production Notes:**  
 1. The information depicted on this product is for plotting purposes only.  
 2. Vector hydrographic data derived from surveys conducted by the USACE and approved partners.  
 3. Soundings are in feet and refer to Mean Lower Low Water (MLLW).  
 4. Raster Background: ArcGIS Online Image Basemap.

In no event shall the U.S. Army Corps of Engineers, Charleston District Office, Spatial Data Branch be liable for direct, indirect, incidental, consequential or special damages of any kind, including, but not limited to, loss of anticipated profits or benefits arising out of use of or reliance on the data.  
 These data sets have been developed from the best available sources. Although efforts have been made to ensure that the datasets are accurate and reliable, errors and variable conditions originating from physical sources used to develop the data may be reflected in the data supplied.  
 This product is not intended to be used for navigation.  
 Mariners are encouraged to use all prudent safety measures.



33°42'0"N

2624000

684000

2625000

683000

2626000

SHEET REFERENCE NUMBER C003 Page 17 of 24

691000

2630000

690000

684000

2631000

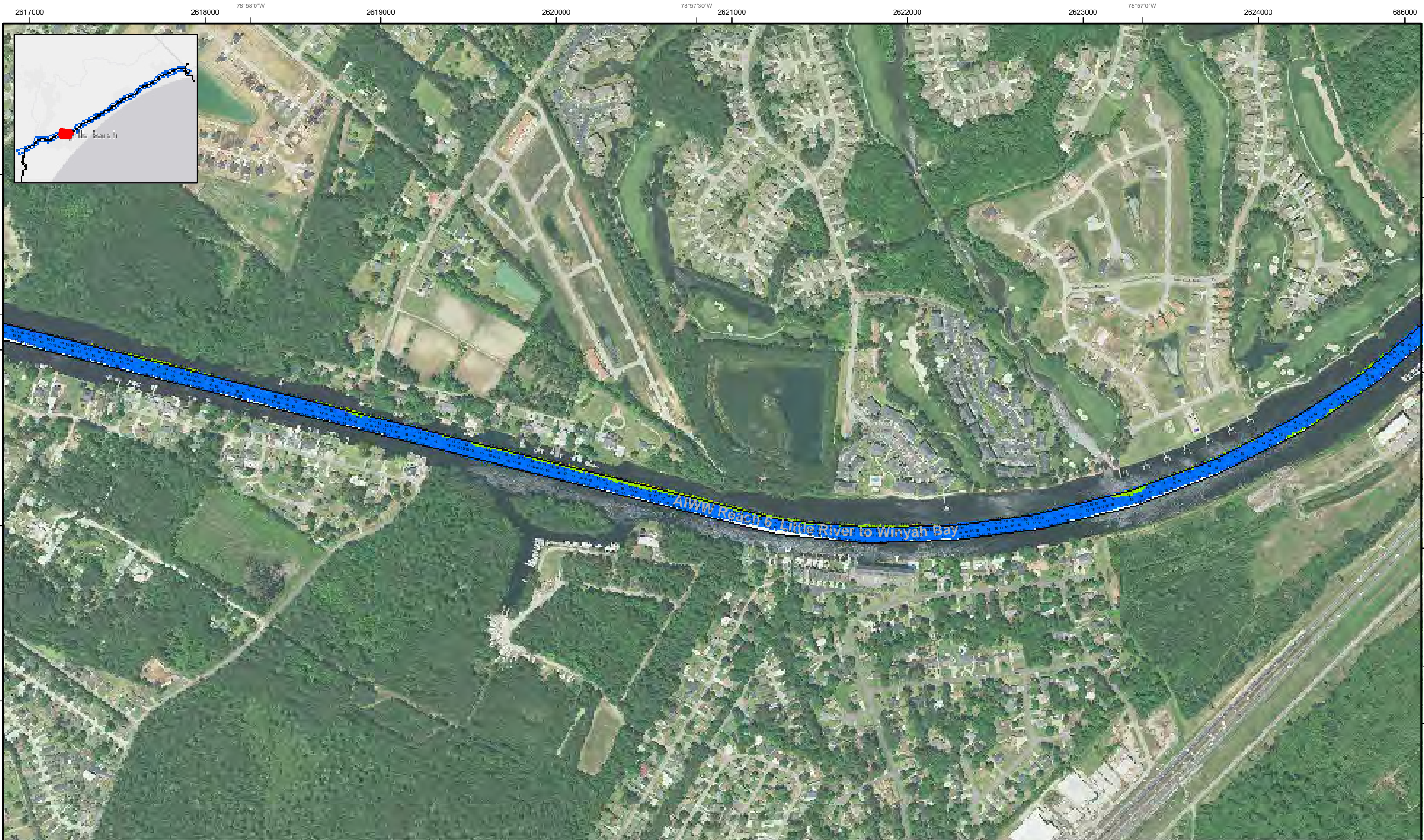
689000

2632000

688000

33°42'30"N





SHEET REFERENCE NUMBER  
**C003**  
 Page 18 of 24

**Atlantic Intercoastal Waterway (AIWW) Channel Survey**  
 The information depicted on this map represents the results of surveys made on the dates indicated and can only be considered as indicating the general conditions existing at that time.  
 Concluded on: **03 NOVEMBER 2017**  
 Little River, SC to Bucksport, SC

U.S. ARMY ENGINEER DISTRICT CORPS OF ENGINEERS CHARLESTON, SOUTH CAROLINA  SPATIAL DATA BRANCH 69A HAGOOD AVE CHARLESTON, SC 29403 CESAC-GIS@USACE.ARMY.MIL	Designed By: <b>eHydro Software v3.82</b> Reviewed By: <b>CCW</b> Reference Scale: <b>1 inch = 500 feet</b> Projection: <b>NAD 1983 StatePlane South Carolina FIPS 3900 Feet</b>	Survey Date: <b>03 NOV 2017</b> Project Reference Number: <b>CESAC-PRA-0001</b> Survey Type: <b>CONDITION</b>	Production Date: <b>13 NOV 2017</b>
--	---	--	--

**Shoalest Sounding**

● Sounding  
 Sounding may cover several point areas and is calculated per reach quarter area  
 "+." indicates sounding above MLLW

**USCG Beacon**  
 ■ Green  
 ▲ Red  
 □ White

**USCG Buoy**  
 ● Green  
 ● Red  
 ● Coast Guard Racon

○ White  
 ○ Yellow  
 ○ USCG Light

**Depth in feet**  
 ■ 0-3   ■ 3 to 6   ■ 6 to 9   ■ 9 to 12   ■ Greater Than 12

0   250   500   1,000   1,500 Feet

Production Notes:  
 1. The information depicted on this product is for plotting purposes only.  
 2. Vector hydrographic data derived from surveys conducted by the USACE and approved partners.  
 3. Soundings are in feet and refer to Mean Lower Low Water (MLLW).  
 4. Raster Background: ArcGIS Online Image Basemap.  
 In no event shall the U.S. Army Corps of Engineers, Charleston District Office, Spatial Data Branch be liable for direct, indirect, incidental, consequential or special damages of any kind, including, but not limited to, loss of anticipated profits or benefits arising out of use of or reliance on the data.  
 These data sets have been developed from the best available sources. Although efforts have been made to ensure that the datasets are accurate and reliable, errors and variable conditions originating from physical sources used to develop the data may be reflected in the data supplied.  
 This product is not intended to be used for navigation.  
 Mariners are encouraged to use all prudent safety measures.

U.S. Army Corps of Engineers  
 Charleston District



79°00'0"W 2609000 685000 33°42'0"N 2610000 78°59'30"W 2611000 686000 2612000 78°59'0"W 2613000 2614000 2615000



2610000 78°59'30"W 2611000 2612000 2613000 78°59'0"W 2614000 682000 33°41'30"N 2615000 78°58'30"W 2616000 683000 2617000 684000

SHEET REFERENCE NUMBER  
C003  
Page 19 of 24

**Atlantic Intercoastal Waterway (AIWW) Channel Survey**  
The information depicted on this map represents the results of surveys made on the dates indicated and can only be considered as indicating the general conditions existing at that time.  
Concluded on: **03 NOVEMBER 2017**  
Little River, SC to Bucksport, SC

U.S. ARMY ENGINEER DISTRICT  
CORPS OF ENGINEERS  
CHARLESTON, SOUTH CAROLINA  
SPATIAL DATA BRANCH  
69A HAGOOD AVE  
CHARLESTON, SC 29403  
CESAC-GIS@USACE.ARMY.MIL

Designed By: <b>eHydro Software v3.82</b>	Survey Date: <b>03 NOV 2017</b>	Production Date: <b>13 NOV 2017</b>
Reviewed By: <b>CCW</b>	Absolute Scale: <b>1:6,000</b>	Project Reference Number: <b>CESAC-PRA-0001</b>
Reference Scale: <b>1 inch = 500 feet</b>	Survey Type: <b>CONDITION</b>	
Projection: <b>NAD 1983 StatePlane South Carolina FIPS 3900 Feet</b>		

**Shoalest Sounding**  
● Sounding  
Sounding may cover several point areas and is calculated per reach quarter area  
"±" indicates sounding above MLLW

**USCG Beacon**  
■ Green  
▲ Red  
□ White

**USCG Buoy**  
● Green  
● Red  
● Coast Guard Racon

○ White  
○ Yellow  
○ USCG Light

**Depth in feet**  
■ 0-3 ■ 3 to 6 ■ 6 to 9 ■ 9 to 12 ■ Greater Than 12



**Production Notes:**  
1. The information depicted on this product is for plotting purposes only.  
2. Vector hydrographic data derived from surveys conducted by the USACE and approved partners.  
3. Soundings are in feet and refer to Mean Lower Low Water (MLLW).  
4. Raster Background: ArcGIS Online Image Basemap.

In no event shall the U.S. Army Corps of Engineers, Charleston District Office, Spatial Data Branch be liable for direct, indirect, incidental, consequential or special damages of any kind, including, but not limited to, loss of anticipated profits or benefits arising out of use of or reliance on the data.  
These data sets have been developed from the best available sources. Although efforts have been made to ensure that the datasets are accurate and reliable, errors and variable conditions originating from physical sources used to develop the data may be reflected in the data supplied.  
This product is not intended to be used for navigation.  
Mariners are encouraged to use all prudent safety measures.





2602000 681000 2603000 79°10'W 2604000 33°41'30"N 682000 2605000 79°0'30"W 2606000 2607000 2608000 79°0'0"W



79°10'W 2604000 2605000 79°0'30"W 2606000 2607000 678000 2608000 79°0'0"W 2609000 679000 2610000 680000

**Atlantic Intercoastal Waterway (AIWW) Channel Survey**  
 The information depicted on this map represents the results of surveys made on the dates indicated and can only be considered as indicating the general conditions existing at that time.  
 Concluded on: **03 NOVEMBER 2017**  
 Little River, SC to Bucksport, SC

U.S. ARMY ENGINEER DISTRICT  
 CORPS OF ENGINEERS  
 CHARLESTON, SOUTH CAROLINA  
 SPATIAL DATA BRANCH  
 69A HAGOOD AVE  
 CHARLESTON, SC 29403  
 CESAC-GIS@USACE.ARMY.MIL

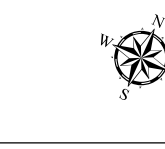
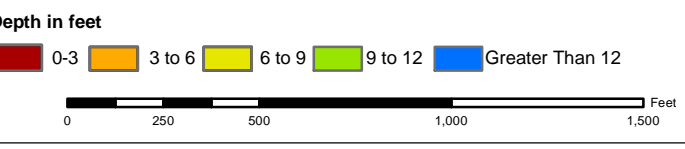
Designed By: <b>eHydro Software v3.82</b>	Survey Date: <b>03 NOV 2017</b>	Production Date: <b>13 NOV 2017</b>
Reviewed By: <b>CCW</b>	Absolute Scale: <b>1:6,000</b>	Project Reference Number: <b>CESAC-PRA-0001</b>
Reference Scale: <b>1 inch = 500 feet</b>	Survey Type: <b>CONDITION</b>	
Projection: <b>NAD 1983 StatePlane South Carolina FIPS 3900 Feet</b>		

**Shoalest Sounding**  
 Sounding may cover several point areas and is calculated per reach quarter area  
 "+" indicates sounding above MLLW

**USCG Beacon**  
 Green  
 Red  
 White

**USCG Buoy**  
 Green  
 Red  
 Coast Guard Racon

**White**  
 Yellow  
 USCG Light



**Production Notes:**  
 1. The information depicted on this product is for plotting purposes only.  
 2. Vector hydrographic data derived from surveys conducted by the USACE and approved partners.  
 3. Soundings are in feet and refer to Mean Lower Low Water (MLLW).  
 4. Raster Background: AODIS Online Image Basemap

In no event shall the U.S. Army Corps of Engineers, Charleston District Office, Spatial Data Branch be liable for direct, indirect, incidental, consequential or special damages of any kind, including, but not limited to, loss of anticipated profits or benefits arising out of use of or reliance on the data.  
 These data sets have been developed from the best available sources. Although efforts have been made to ensure that the datasets are accurate and reliable, errors and variable conditions originating from physical sources used to develop the data may be reflected in the data supplied.  
 This product is not intended to be used for navigation.  
 Mariners are encouraged to use all prudent safety measures.



SHEET REFERENCE NUMBER  
**C003**  
 Page 20 of 24



2594000 2595000 2596000 2597000 2598000 2599000 2600000 2601000 2602000



2594000 2595000 2596000 2597000 2598000 2599000 2600000 2601000 2602000

SHEET  
REFERENCE  
NUMBER  
C003  
Page 21 of 24

**Atlantic Intercoastal Waterway (AIWW)  
Channel Survey**  
The information depicted on this map represents the results of surveys made on the dates indicated and can only be considered as indicating the general conditions existing at that time.  
Concluded on: **03 NOVEMBER 2017**  
Little River, SC to Bucksport, SC

U.S. ARMY ENGINEER DISTRICT  
CORPS OF ENGINEERS  
CHARLESTON, SOUTH CAROLINA  
SPATIAL DATA BRANCH  
69A HAGOOD AVE  
CHARLESTON, SC 29403  
CESAC-GIS@USACE.ARMY.MIL

Designed By: **eHydro Software v3.82**  
Reviewed By: **CCW**  
Reference Scale: **1 inch = 500 feet**  
Projection: **NAD 1983 StatePlane South Carolina FIPS 3900 Feet**

Survey Date: **03 NOV 2017**  
Production Date: **13 NOV 2017**  
Project Reference Number: **CESAC-PRA-0001**  
Survey Type: **CONDITION**

**Shoalest Sounding**  
Sounding  
Sounding may cover several point areas and is calculated per reach quarter area  
"+ " indicates sounding above MLLW

**USCG Beacon**  
Green  
Red  
White

**USCG Buoy**  
Green  
Red  
Coast Guard Racon

White  
Yellow  
USCG Light

**Depth in feet**  
0-3 3 to 6 6 to 9 9 to 12 Greater Than 12

0 250 500 1,000 1,500 Feet

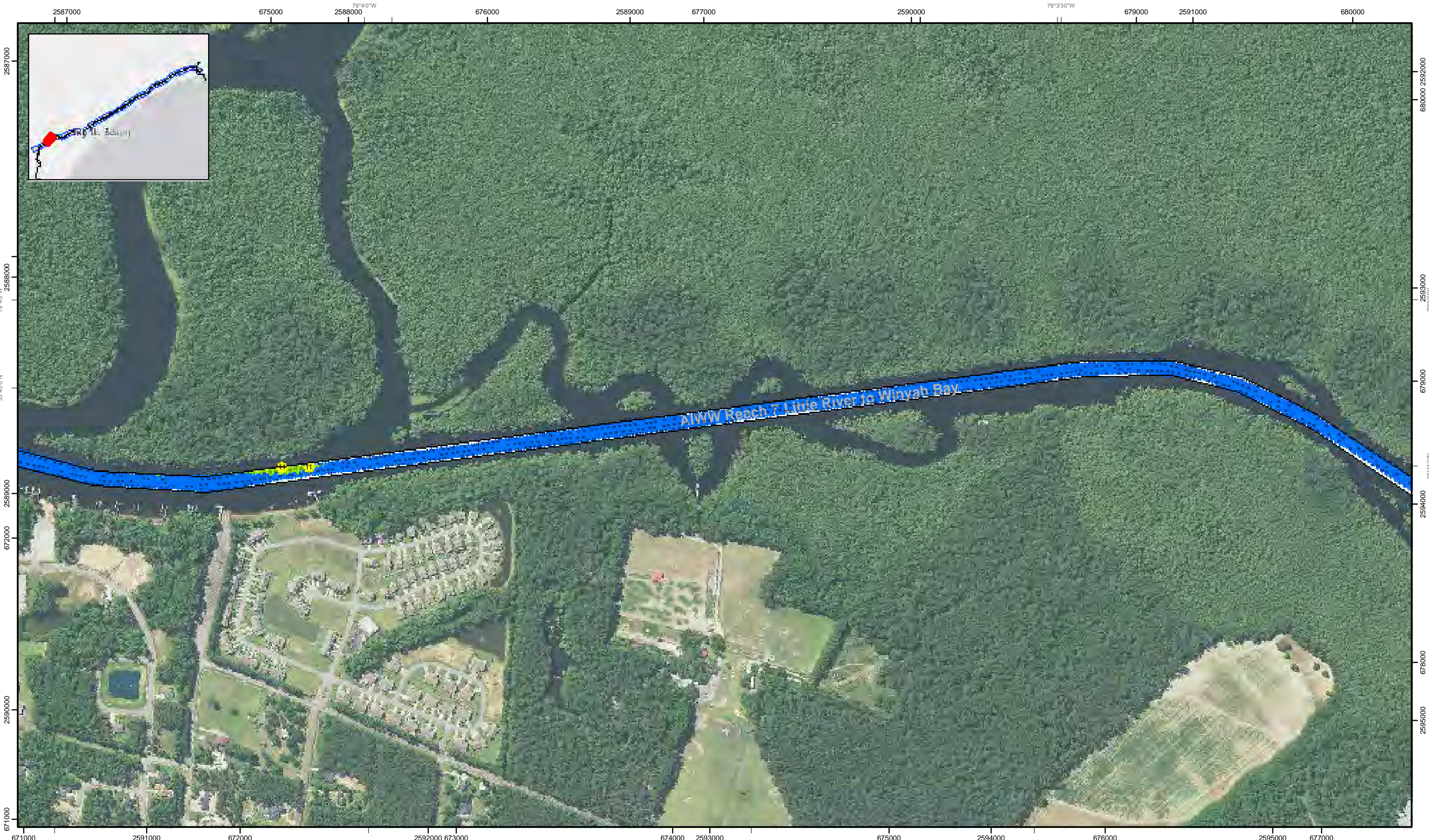


**Production Notes:**  
1. The information depicted on this product is for plotting purposes only.  
2. Vector hydrographic data derived from surveys conducted by the USACE and approved partners.  
3. Soundings are in feet and refer to Mean Lower Low Water (MLLW).  
4. Raster Background: ArcGIS Online Image Basemap.

In no event shall the U.S. Army Corps of Engineers, Charleston District Office, Spatial Data Branch be liable for direct, indirect, incidental, consequential or special damages of any kind, including, but not limited to, loss of anticipated profits or benefits arising out of use of or reliance on the data.  
These data sets have been developed from the best available sources. Although efforts have been made to ensure that the datasets are accurate and reliable, errors and variable conditions originating from physical sources used to develop the data may be reflected in the data supplied.  
This product is not intended to be used for navigation.  
Mariners are encouraged to use all prudent safety measures.







**Atlantic Intercoastal Waterway (AIWW) Channel Survey**  
 The information depicted on this map represents the results of surveys made on the dates indicated and can only be considered as indicating the general conditions existing at that time.  
 Concluded on: **03 NOVEMBER 2017**  
 Little River, SC to Bucksport, SC

U.S. ARMY ENGINEER DISTRICT  
 CORPS OF ENGINEERS  
 CHARLESTON, SOUTH CAROLINA  
 SPATIAL DATA BRANCH  
 69A HAGOOD AVE  
 CHARLESTON, SC 29403  
 CESAC-GIS@USACE.ARMY.MIL

Designed By: <b>eHydro Software v3.82</b>	Survey Date: <b>03 NOV 2017</b>	Production Date: <b>13 NOV 2017</b>
Reviewed By: <b>CCW</b>	Absolute Scale: <b>1:6,000</b>	Project Reference Number: <b>CESAC-PRA-0001</b>
Reference Scale: <b>1 inch = 500 feet</b>	Survey Type: <b>CONDITION</b>	
Projection: <b>NAD 1983 StatePlane South Carolina FIPS 3900 Feet</b>		

**Shoalest Sounding**  
 Sounding may cover several point areas and is calculated per reach quarter area  
 "+" indicates sounding above MLLW

**USCG Beacon**  
 Green  
 Red  
 White

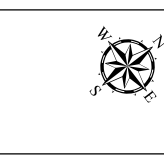
**USCG Buoy**  
 Green  
 Red  
 Coast Guard Racon

**USCG Light**  
 White  
 Yellow

**Depth in feet**

0-3	3 to 6	6 to 9	9 to 12	Greater Than 12
-----	--------	--------	---------	-----------------

0 250 500 1,000 1,500 Feet



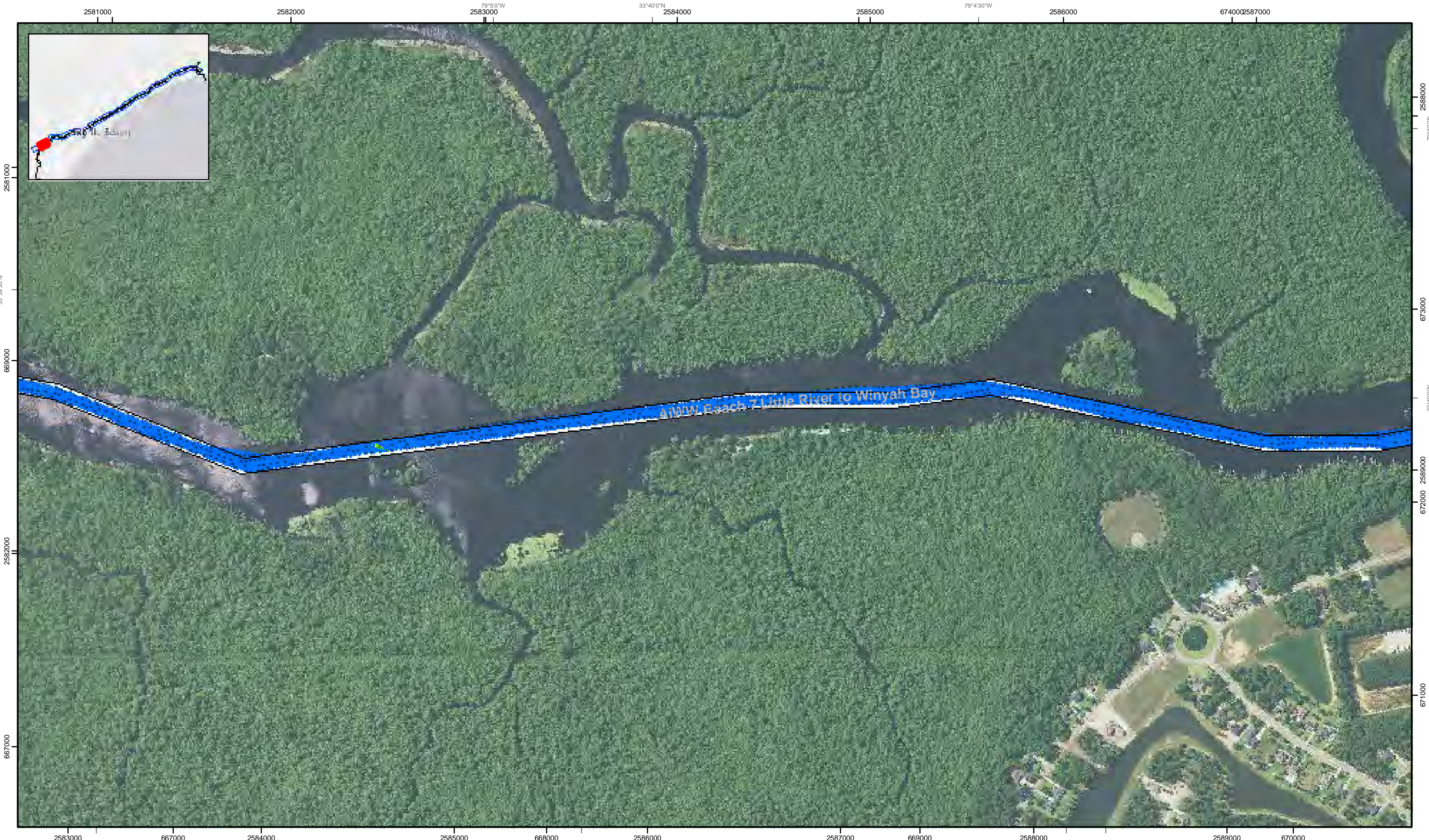
**Production Notes:**  
 1. The information depicted on this product is for plotting purposes only.  
 2. Vector hydrographic data derived from surveys conducted by the USACE and approved partners.  
 3. Soundings are in feet and refer to Mean Lower Low Water (MLLW).  
 4. Raster Background: ArcGIS Online Image Basemap

In no event shall the U.S. Army Corps of Engineers, Charleston District Office, Spatial Data Branch be liable for direct, indirect, incidental, consequential or special damages of any kind, including, but not limited to, loss of anticipated profits or benefits arising out of use of or reliance on the data.  
 These data sets have been developed from the best available sources. Although efforts have been made to ensure that the datasets are accurate and reliable, errors and variable conditions originating from physical sources used to develop the data may be reflected in the data supplied.  
 This product is not intended to be used for navigation.  
 Mariners are encouraged to use all prudent safety measures.



SHEET REFERENCE NUMBER  
**C003**  
 Page 22 of 24





SHEET REFERENCE NUMBER  
C003  
Page 23 of 24

**Atlantic Intercoastal Waterway (AIWW) Channel Survey**  
The information depicted on this map represents the results of surveys made on the dates indicated and can only be considered as indicating the general conditions existing at that time.  
Concluded on: **03 NOVEMBER 2017**  
Little River, SC to Bucksport, SC

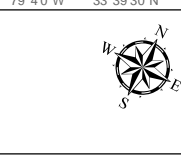
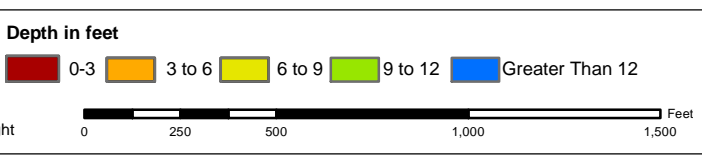
U.S. ARMY ENGINEER DISTRICT CORPS OF ENGINEERS CHARLESTON, SOUTH CAROLINA	Designed By: <b>eHydro Software v3.82</b>	Survey Date: <b>03 NOV 2017</b>	Production Date: <b>13 NOV 2017</b>
SPATIAL DATA BRANCH 69A HAGOOD AVE CHARLESTON, SC 29403 CESAC-GIS@USACE.ARMY.MIL	Reviewed By: <b>CCW</b>	Absolute Scale: <b>1:6,000</b>	Project Reference Number: <b>CESAC-PRA-0001</b>
	Reference Scale: <b>1 inch = 500 feet</b>	Survey Type: <b>CONDITION</b>	
	Projection: <b>NAD 1983 StatePlane South Carolina FIPS 3900 Feet</b>		

**Shoalest Sounding**  
● Sounding  
Sounding may cover several point areas and is calculated per reach quarter area  
"+ indicates sounding above MLLW

**USCG Beacon**  
■ Green  
▲ Red  
□ White

**USCG Buoy**  
● Green  
● Red  
● Coast Guard Racon

○ White  
○ Yellow  
○ USCG Light



**Production Notes:**

- The information depicted on this product is for plotting purposes only.
- Vector hydrographic data derived from surveys conducted by the USACE and approved partners.
- Soundings are in feet and refer to Mean Lower Low Water (MLLW).
- Raster Background: ArcGIS Online Image Basemap.

In no event shall the U.S. Army Corps of Engineers, Charleston District Office, Spatial Data Branch be liable for direct, indirect, incidental, consequential or special damages of any kind, including, but not limited to, loss of anticipated profits or benefits arising out of use of or reliance on the data.  
These data sets have been developed from the best available sources. Although efforts have been made to ensure that the datasets are accurate and reliable, errors and variable conditions originating from physical sources used to develop the data may be reflected in the data supplied.  
**This product is not intended to be used for navigation.**  
Mariners are encouraged to use all prudent safety measures.





2574000 2575000 2576000 2577000 2578000 2579000 2580000 671000  
 79°6'30"W 669000 33°39'30"N 79°6'0"W 2578000 79°5'30"W 2580000 671000



**Atlantic Intercoastal Waterway (AIWW) Channel Survey**  
 The information depicted on this map represents the results of surveys made on the dates indicated and can only be considered as indicating the general conditions existing at that time.  
 Concluded on: **03 NOVEMBER 2017**  
 Little River, SC to Bucksport, SC

U.S. ARMY ENGINEER DISTRICT  
 CORPS OF ENGINEERS  
 CHARLESTON, SOUTH CAROLINA  
 SPATIAL DATA BRANCH  
 69A HAGOOD AVE  
 CHARLESTON, SC 29403  
 CESAC-GIS@USACE.ARMY.MIL

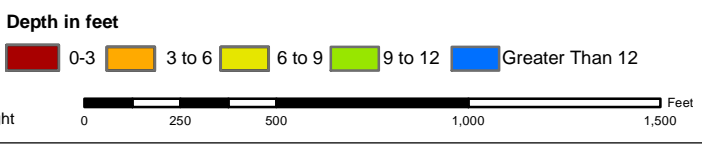
Designed By: <b>eHydro Software v3.82</b>	Survey Date: <b>03 NOV 2017</b>	Production Date: <b>13 NOV 2017</b>
Reviewed By: <b>CCW</b>	Absolute Scale: <b>1:6,000</b>	Project Reference Number: <b>CESAC-PRA-0001</b>
Reference Scale: <b>1 inch = 500 feet</b>	Survey Type: <b>CONDITION</b>	
Projection: <b>NAD 1983 StatePlane South Carolina FIPS 3900 Feet</b>		

**Shoalest Sounding**  
 ● Sounding  
 Sounding may cover several point areas and is calculated per reach quarter area  
 "+" indicates sounding above MLLW

**USCG Beacon**  
 ■ Green  
 ▲ Red  
 □ White

**USCG Buoy**  
 ● Green  
 ● Red  
 ● Coast Guard Racon

**USCG Light**  
 ● White  
 ● Yellow



**Production Notes:**  
 1. The information depicted on this product is for plotting purposes only.  
 2. Vector hydrographic data derived from surveys conducted by the USACE and approved partners.  
 3. Soundings are in feet and refer to Mean Lower Low Water (MLLW).  
 4. Raster Background: ArcGIS Online Image Basemap

In no event shall the U.S. Army Corps of Engineers, Charleston District Office, Spatial Data Branch be liable for direct, indirect, incidental, consequential or special damages of any kind, including, but not limited to, loss of anticipated profits or benefits arising out of use of or reliance on the data.  
 These data sets have been developed from the best available sources. Although efforts have been made to ensure that the datasets are accurate and reliable, errors and variable conditions originating from physical sources used to develop the data may be reflected in the data supplied.  
**This product is not intended to be used for navigation.**  
 Mariners are encouraged to use all prudent safety measures.



SHEET  
 REFERENCE  
 NUMBER  
**C003**  
 Page 24 of 24