

Atlantic Intercoastal Waterway (AIWW)  
Channel Survey

The information depicted on this map represents the results of surveys made on the dates indicated and can only be considered as indicating the general conditions existing at that time.  
Concluded on: 16 FEB 2024

Little River, SC to Bucksport, SC

U.S. ARMY ENGINEER DISTRICT  
CORPS OF ENGINEERS  
CHARLESTON, SOUTH CAROLINA

SPATIAL DATA BRANCH  
69A HAGOOD AVE.  
CHARLESTON, SC 29403  
CESAC-GIS@USACE.ARMY.MIL

Designed By:  
**USACE**

Reviewed By:  
**CCW**

Reference Scale:  
**1 inch = 750 feet**

Projection:  
**NAD 1983 StatePlane South Carolina FIPS 3900 Feet**

Survey Date:  
**16 FEB 2024**

Project Reference Number:  
**CESAC-PRA-0001**

Survey Type:  
**CONDITION**

Production Date:  
**6 MAR 2024**

Shoalest Sounding

Sounding

Sounding may cover several point areas and is calculated per reach quarter area  
"4" indicates sounding above MLLW

Depth in feet

0-3

3 to 6

6 to 9

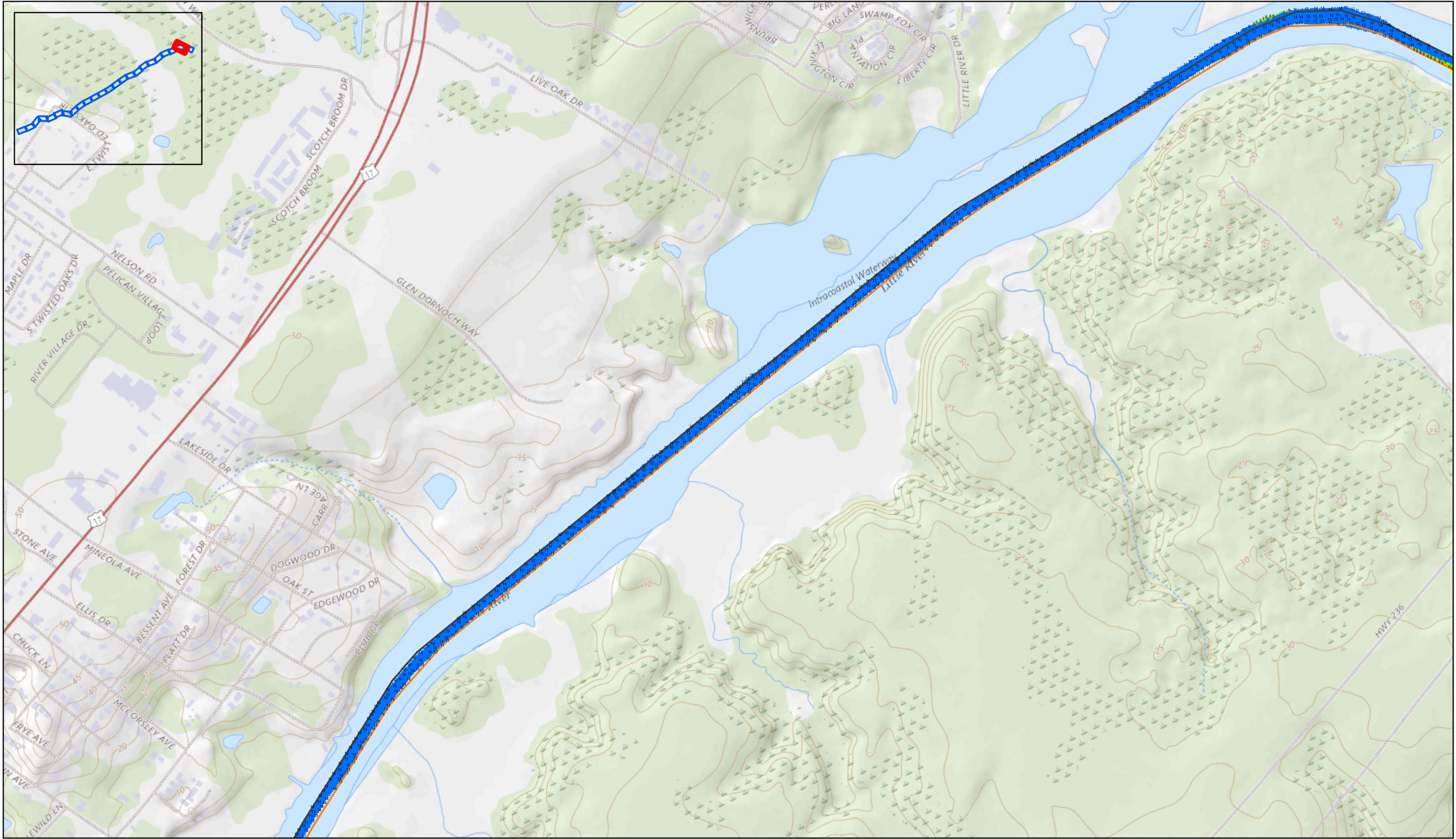
9 to 12

Greater Than 12

**Production Notes:**  
1. The information depicted on this product is for plotting purposes only  
2. Vector hydrographic data derived from surveys conducted by the USACE and approved partners  
3. Soundings are in feet and refer to Mean Lower Low Water (MLLW)  
  
In no event shall the U.S. Army Corps of Engineers, Charleston District Office, Spatial Data Branch be liable for direct, indirect, incidental, consequential or special damages of any kind, including, but not limited to, loss of anticipated profits or benefits arising out of use of or reliance on the data.  
These data sets have been developed from the best available sources. Although efforts have been made to ensure that the datasets are accurate and reliable, errors and variable conditions originating from physical sources used to develop the data may be reflected in the data supplied.  
**This product is not intended to be used for navigation. Mariners are encouraged to use all prudent safety measures.**

U.S. Army Corps of Engineers  
Charleston District





Atlantic Intracoastal Waterway (AIWW)  
Channel Survey

The information depicted on this map represents the results of surveys made on the dates indicated and can only be considered as indicating the general conditions existing at that time.  
Concluded on: **16 FEB 2024**

Little River, SC to Bucksport, SC

U.S. ARMY ENGINEER DISTRICT  
CORPS OF ENGINEERS  
CHARLESTON, SOUTH CAROLINA

SPATIAL DATA BRANCH  
69A HAGOOD AVE  
CHARLESTON, SC 29403  
CESAC-GIS@USACE.ARMY.MIL

Designed By:  
**USACE**

Reviewed By:  
**CCW**

Reference Scale:  
**1 inch = 750 feet**

Projection:  
**NAD 1983 StatePlane South Carolina FIPS 3900 Feet**

Survey Date:  
**16 FEB 2024**

Project Reference Number:  
**CESAC-PRA-0001**

Survey Type:  
**CONDITION**

Production Date:  
**6 MAR 2024**

Shoalest Sounding

Sounding

*Sounding may cover several point areas and is calculated per reach quarter area*  
"+ " indicates sounding above MLLW

Depth in feet

0-3

3 to 6

6 to 9

9 to 12

Greater Than 12

**Production Notes:**  
1. The information depicted on this product is for plotting purposes only.  
2. Vector hydrographic data derived from surveys conducted by the USACE and approved partners.  
3. Soundings are in feet and refer to Mean Lower Low Water (MLLW).  
**This product is not intended to be used for navigation. Mariners are encouraged to use all prudent safety measures.**

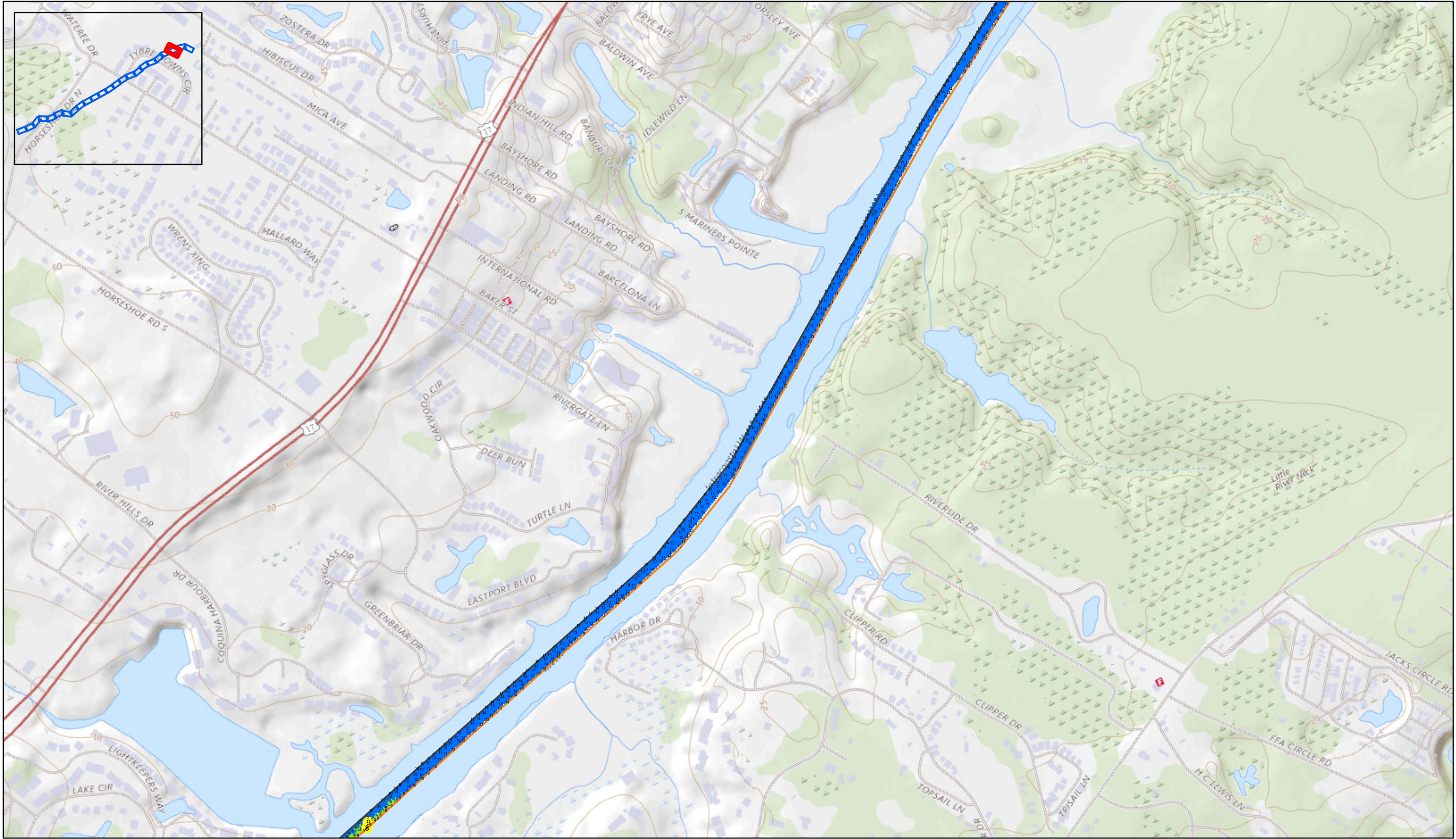
In no event shall the U.S. Army Corps of Engineers, Charleston District Office, Spatial Data Branch be liable for direct, indirect, incidental, consequential or special damages of any kind, including, but not limited to, loss of anticipated profits or benefits arising out of use of or reliance on the data.

These data sets have been developed from the best available sources. Although efforts have been made to ensure that the datasets are accurate and reliable, errors and variable conditions originating from physical sources used to develop the data may be reflected in the data supplied.

**This product is not intended to be used for navigation. Mariners are encouraged to use all prudent safety measures.**

U.S. Army Corps of Engineers  
Charleston District





Atlantic Intercoastal Waterway (AIWW)  
Channel Survey

The information depicted on this map represents the results of surveys made on the dates indicated and can only be considered as indicating the general conditions existing at that time.  
Concluded on: **16 FEB 2024**

Little River, SC to Bucksport, SC

U.S. ARMY ENGINEER DISTRICT  
CORPS OF ENGINEERS  
CHARLESTON, SOUTH CAROLINA

SPATIAL DATA BRANCH  
69A HAGOOD AVE  
CHARLESTON, SC 29403  
CESAC-GIS@USACE.ARMY.MIL

Designed By:  
**USACE**

Reviewed By:  
**CCW**

Reference Scale:  
**1 inch = 750 feet**

Projection:  
**NAD 1983 StatePlane South Carolina FIPS 3900 Feet**

Survey Date:  
**16 FEB 2024**

Production Date:  
**6 MAR 2024**

Project Reference Number:  
**CESAC-PRA-0001**

Survey Type:  
**CONDITION**

Shoalest Sounding

Sounding

Sounding may cover several point areas and is calculated per reach quarter area  
"4+" indicates sounding above MLLW

Depth in feet

0-3

3 to 6

6 to 9

9 to 12

Greater Than 12



**Production Notes:**

- The information depicted on this product is for plotting purposes only
- Vector hydrographic data derived from surveys conducted by the USACE and approved partners
- Soundings are in feet and refer to Mean Lower Low Water (MLLW)

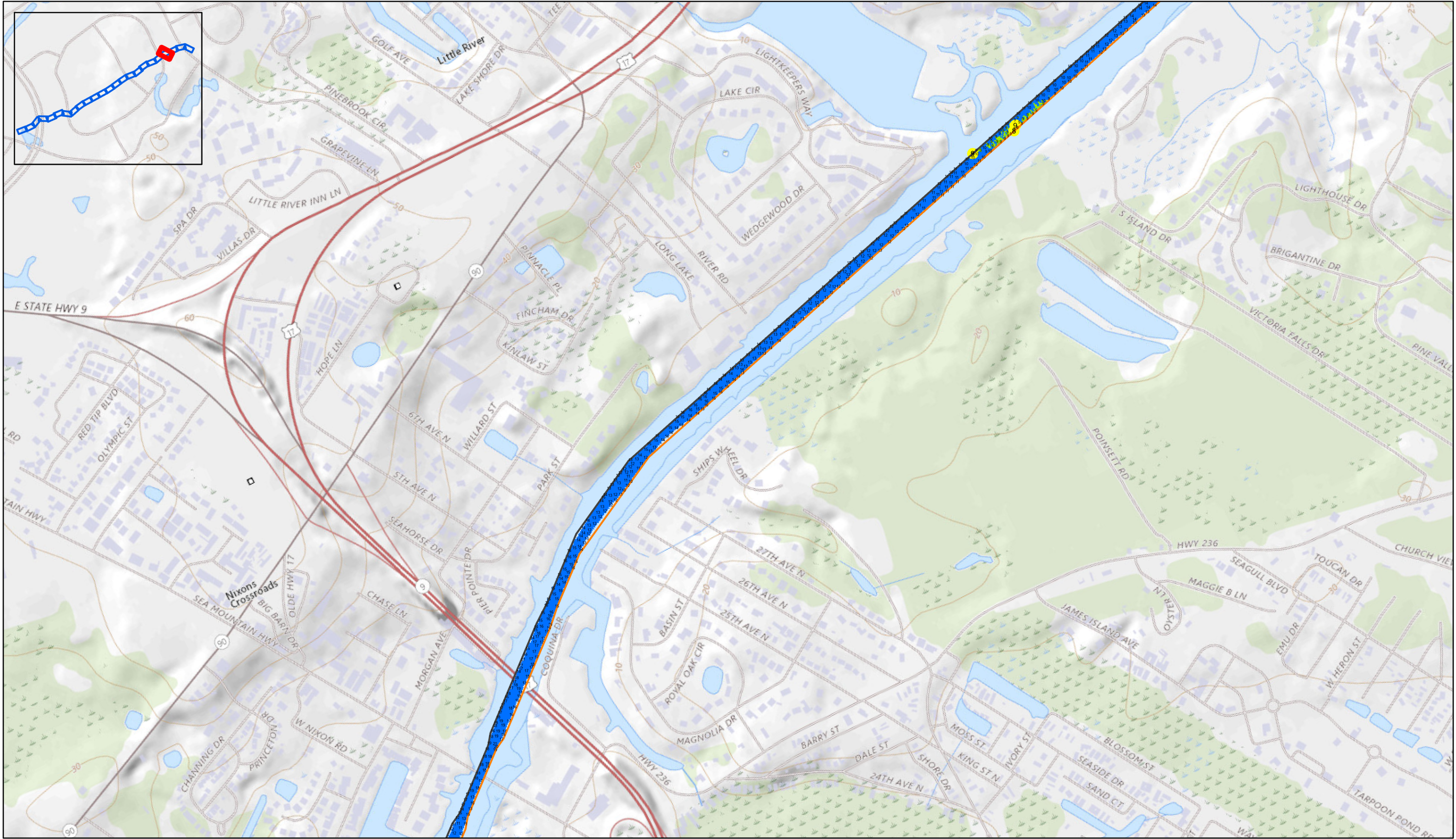
**This product is not intended to be used for navigation. Mariners are encouraged to use all prudent safety measures.**

In no event shall the U.S. Army Corps of Engineers, Charleston District Office, Spatial Data Branch be liable for direct, indirect, incidental, consequential or special damages of any kind, including, but not limited to, loss of anticipated profits or benefits arising out of use of or reliance on the data.

These data sets have been developed from the best available sources. Although efforts have been made to ensure that the datasets are accurate and reliable, errors and variable conditions originating from physical sources used to develop the data may be reflected in the data supplied.







Atlantic Intercoastal Waterway (AIWW)  
Channel Survey

The information depicted on this map represents the results of surveys made on the dates indicated and can only be considered as indicating the general conditions existing at that time.  
Concluded on: 16 FEB 2024

Little River, SC to Bucksport, SC

U.S. ARMY ENGINEER DISTRICT  
CORPS OF ENGINEERS  
CHARLESTON, SOUTH CAROLINA

SPATIAL DATA BRANCH  
69A HAGOOD AVE  
CHARLESTON, SC 29403  
CESAC-GIS@USACE.ARMY.MIL

Designed By:  
**USACE**

Reviewed By:  
**CCW**

Reference Scale:  
**1 inch = 750 feet**

Projection:  
**NAD 1983 StatePlane South Carolina FIPS 3900 Feet**

Survey Date:  
**16 FEB 2024**

Project Reference Number:  
**CESAC-PRA-0001**

Survey Type:  
**CONDITION**

Production Date:  
**6 MAR 2024**

Shoalest Sounding

Sounding

Sounding may cover several point areas and is calculated per reach quarter area  
"4" indicates sounding above MLLW

Depth in feet

0-3

3 to 6

6 to 9

9 to 12

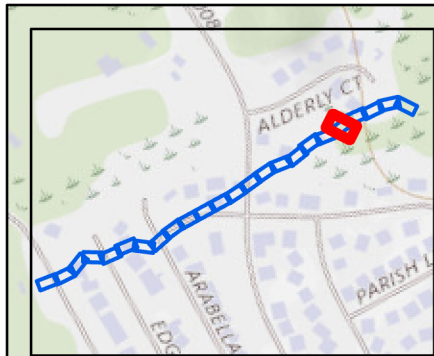
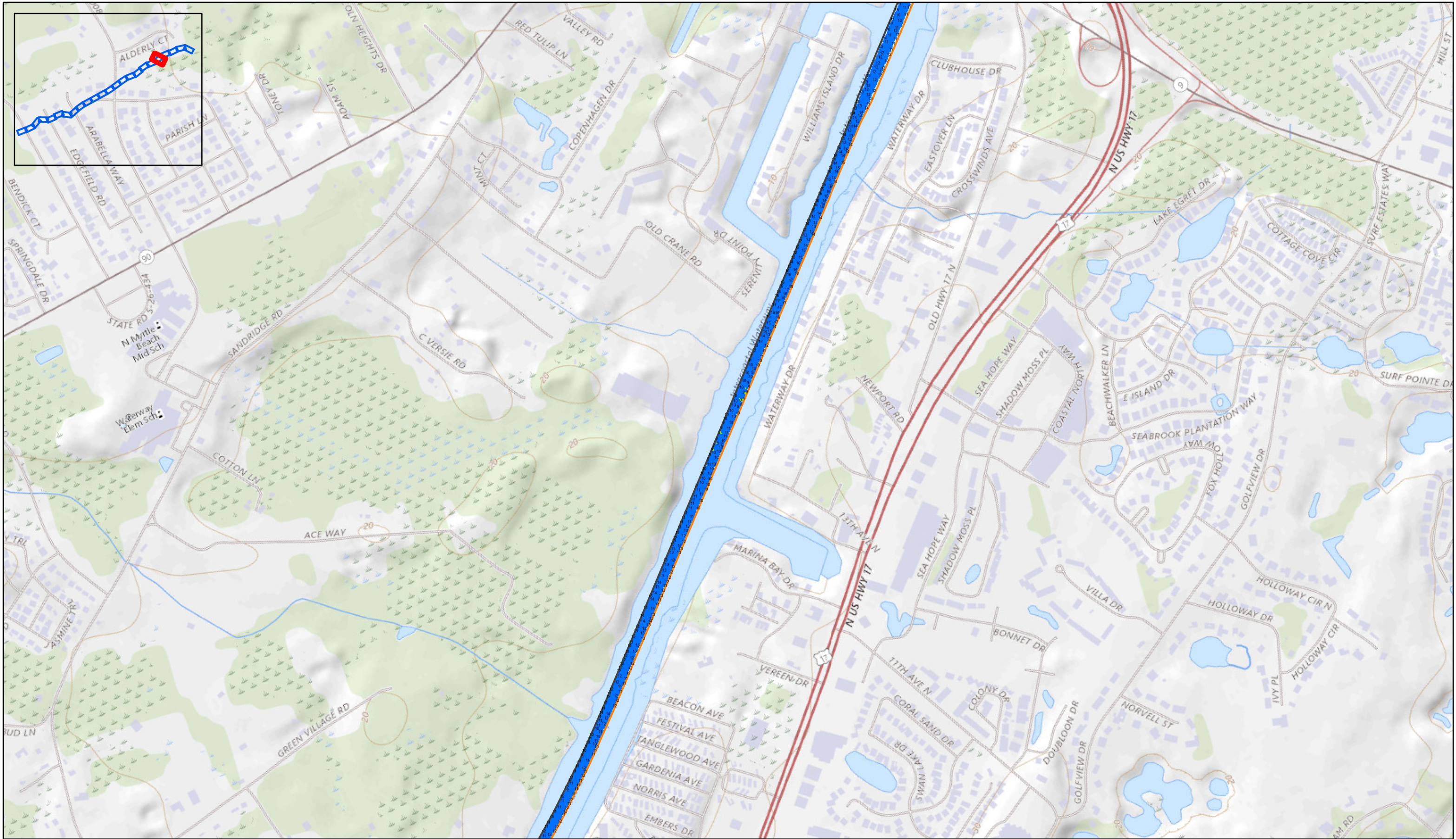
Greater Than 12

**Production Notes:**  
1. The information depicted on this product is for plotting purposes only.  
2. Vector hydrographic data derived from surveys conducted by the USACE and approved partners.  
3. Soundings are in feet and refer to Mean Lower Low Water (MLLW).  
**This product is not intended to be used for navigation. Mariners are encouraged to use all prudent safety measures.**


In no event shall the U.S. Army Corps of Engineers, Charleston District Office, Spatial Data Branch be liable for direct, indirect, incidental, consequential or special damages of any kind, including, but not limited to, loss of anticipated profits or benefits arising out of use of or reliance on the data.  
These data sets have been developed from the best available sources. Although efforts have been made to ensure that the datasets are accurate and reliable, errors and variable conditions originating from physical sources used to develop the data may be reflected in the data supplied.

**U.S. Army Corps of Engineers**  
Charleston District







SHEET REFERENCE NUMBER  C003  Page 5 of 24	<b>Atlantic Intercoastal Waterway (AIWW) Channel Survey</b>		U.S. ARMY ENGINEER DISTRICT CORPS OF ENGINEERS CHARLESTON, SOUTH CAROLINA		Designed By: <b>USACE</b>	Survey Date: <b>16 FEB 2024</b>	Production Date: <b>6 MAR 2024</b>
	The information depicted on this map represents the results of surveys made on the dates indicated and can only be considered as indicating the general conditions existing at that time. Concluded on: <b>16 FEB 2024</b>		SPATIAL DATA BRANCH 69A HAGOOD AVE CHARLESTON, SC 29403		Reviewed By: <b>CCW</b>	Absolute Scale: <b>1:9,000</b>	Project Reference Number: <b>CESAC-PRA-0001</b>
			CESAC-GIS@USACE.ARMY.MIL		Reference Scale: <b>1 inch = 750 feet</b>	Survey Type: <b>CONDITION</b>	
	Little River, SC to Bucksport, SC				Projection: <b>NAD 1983 StatePlane South Carolina FIPS 3900 Feet</b>		

**Shoalest Sounding**  


**Sounding**  
Sounding may cover several point areas and is calculated per reach quarter area  
"4" indicates sounding above MLLW

**Depth in feet**  




**Production Notes:**


- The information depicted on this product is for plotting purposes only
- Vector hydrographic data derived from surveys conducted by the USACE and approved partners
- Soundings are in feet and refer to Mean Lower Low Water (MLLW)

This product is not intended to be used for navigation. Mariners are encouraged to use all prudent safety measures.

In no event shall the U.S. Army Corps of Engineers, Charleston District Office, Spatial Data Branch be liable for direct, indirect, incidental, consequential or special damages of any kind, including, but not limited to, loss of anticipated profits or benefits arising out of use of or reliance on the data.

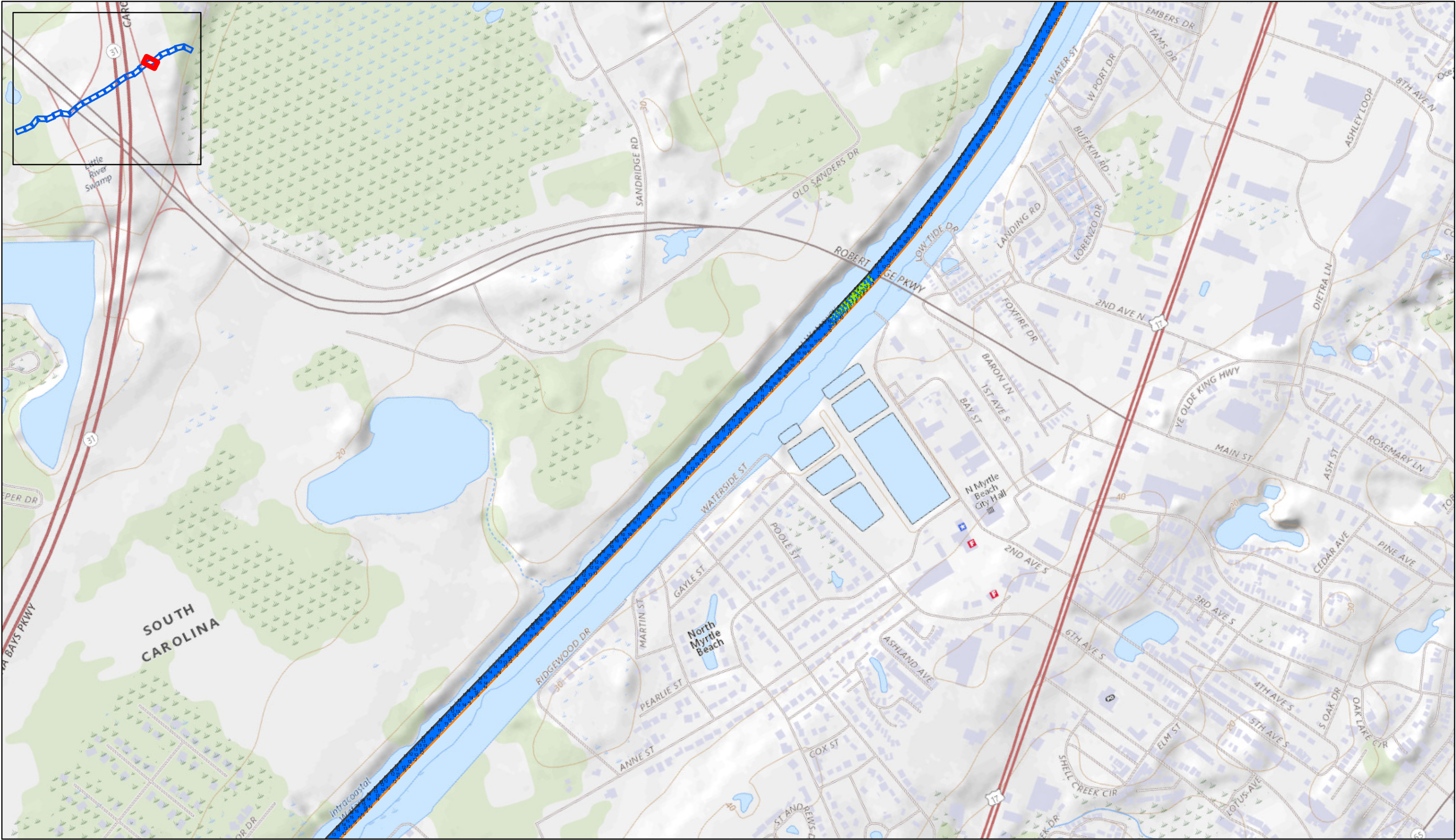
These data sets have been developed from the best available sources. Although efforts have been made to ensure that the datasets are accurate and reliable, errors and variable conditions originating from physical sources used to develop the data may be reflected in the data supplied.

This product is not intended to be used for navigation. Mariners are encouraged to use all prudent safety measures.




U.S. Army Corps of Engineers  
Charleston District







SHEET REFERENCE NUMBER  C003  Page 6 of 24	<b>Atlantic Intercoastal Waterway (AIWW) Channel Survey</b> The information depicted on this map represents the results of surveys made on the dates indicated and can only be considered as indicating the general conditions existing at that time. Concluded on: <b>16 FEB 2024</b>  Little River, SC to Bucksport, SC		U.S. ARMY ENGINEER DISTRICT CORPS OF ENGINEERS CHARLESTON, SOUTH CAROLINA		Designed By: <b>USACE</b>	Survey Date: <b>16 FEB 2024</b>	Production Date: <b>6 MAR 2024</b>
			Reviewed By: <b>CCW</b>		Absolute Scale: <b>1:9,000</b>	Project Reference Number: <b>CESAC-PRA-0001</b>	
			SPATIAL DATA BRANCH 69A HAGOOD AVE CHARLESTON, SC 29403		Reference Scale: <b>1 inch = 750 feet</b>	Survey Type: <b>CONDITION</b>	
			CESAC-GIS@USACE.ARMY.MIL		Projection: <b>NAD 1983 StatePlane South Carolina FIPS 3900 Feet</b>		


**Shoalest Sounding**  


**Sounding**  
*Sounding may cover several point areas and is calculated per reach quarter area*  
"4" indicates sounding above MLLW

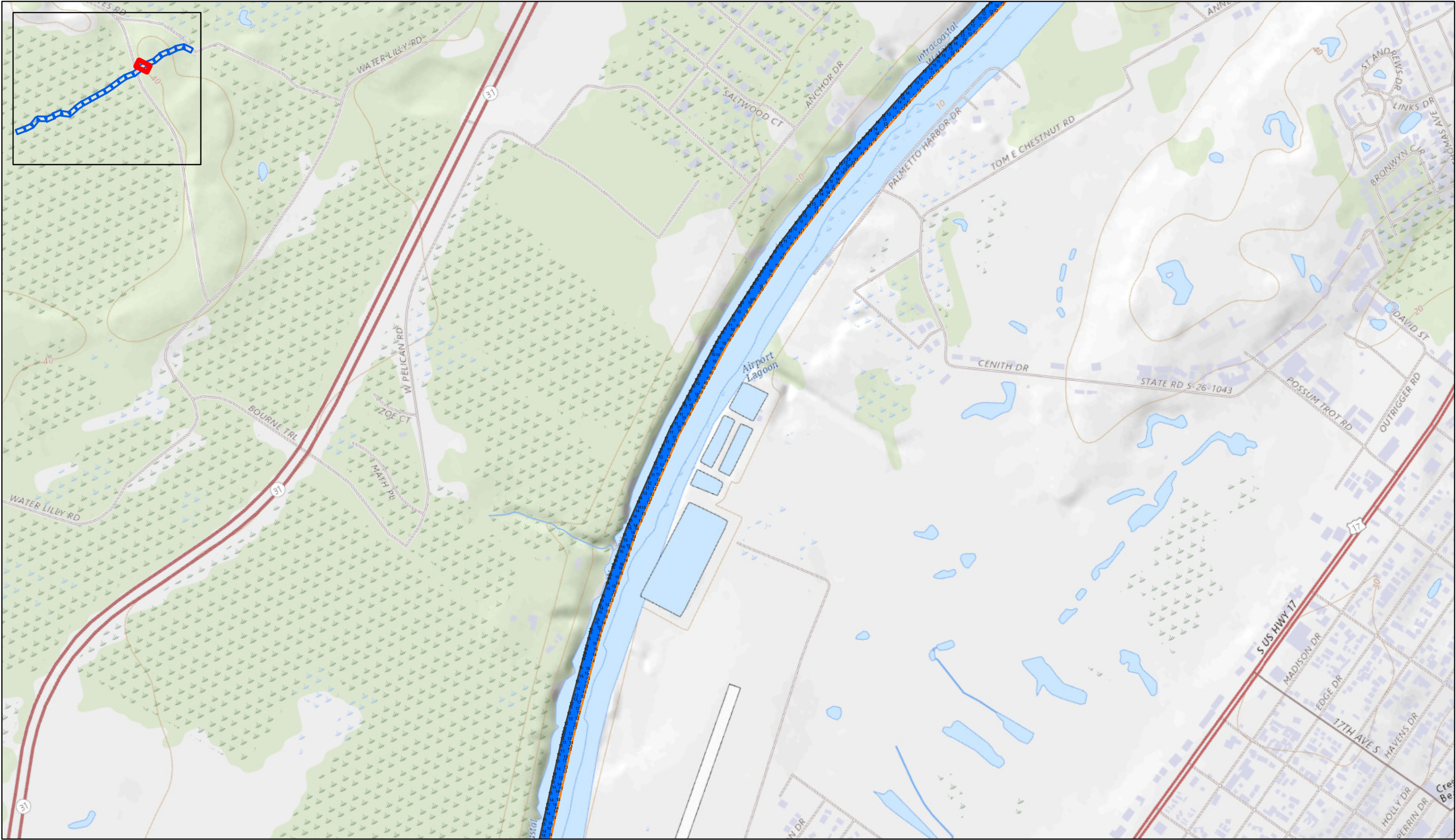
**Depth in feet**  




**Production Notes:**  
1. The information depicted on this product is for plotting purposes only.  
2. Vector hydrographic data derived from surveys conducted by the USACE and approved partners.  
3. Soundings are in feet and refer to Mean Lower Low Water (MLLW).  
  
In no event shall the U.S. Army Corps of Engineers, Charleston District Office, Spatial Data Branch be liable for direct, indirect, incidental, consequential or special damages of any kind, including, but not limited to, loss of anticipated profits or benefits arising out of use of or reliance on the data.  
These data sets have been developed from the best available sources. Although efforts have been made to ensure that the datasets are accurate and reliable, errors and variable conditions originating from physical sources used to develop the data may be reflected in the data supplied.  
**This product is not intended to be used for navigation.**  
Mariners are encouraged to use all prudent safety measures.

  
U.S. Army Corps of Engineers  
Charleston District





Page 7 of 24

SHEET  
REFERENCE  
NUMBER  
C003

Atlantic Intercoastal Waterway (AIWW)  
Channel Survey

The information depicted on this map represents the results of surveys made on the dates indicated and can only be considered as indicating the general conditions existing at that time.  
Concluded on: 16 FEB 2024

Little River, SC to Bucksport, SC

U.S. ARMY ENGINEER DISTRICT  
CORPS OF ENGINEERS  
CHARLESTON, SOUTH CAROLINA

Designed By:  
**USACE**  
Reviewed By:  
**CCW**  
Reference Scale:  
**1 inch = 750 feet**  
Projection:  
**NAD 1983 StatePlane South Carolina FIPS 3900 Feet**

Survey Date:  
**16 FEB 2024**  
Project Reference Number:  
**CESAC-PRA-0001**  
Survey Type:  
**CONDITION**

Production Date:  
**6 MAR 2024**

Shoalest Sounding

Sounding

Sounding may cover several point areas and is calculated per reach quarter area  
"4" indicates sounding above MLLW

Depth in feet

0-3

3 to 6

6 to 9

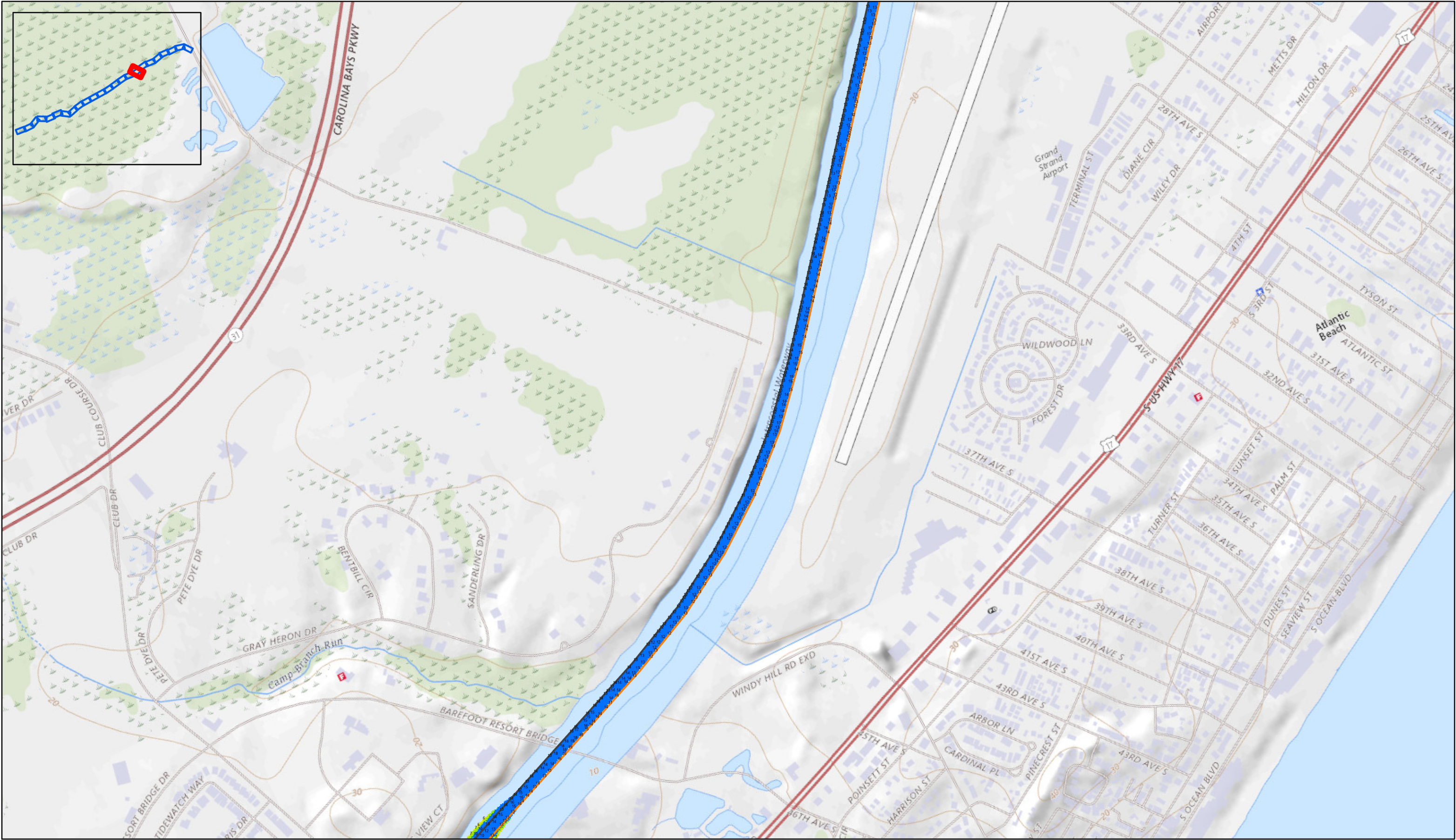
9 to 12

Greater Than 12

**Production Notes:**  
1. The information depicted on this product is for plotting purposes only  
2. Vector hydrographic data derived from surveys conducted by the USACE and approved partners  
3. Soundings are in feet and refer to Mean Lower Low Water (MLLW)  
  
In no event shall the U.S. Army Corps of Engineers, Charleston District Office, Spatial Data Branch be liable for direct, indirect, incidental, consequential or special damages of any kind, including, but not limited to, loss of anticipated profits or benefits arising out of use of or reliance on the data.  
These data sets have been developed from the best available sources. Although efforts have been made to ensure that the datasets are accurate and reliable, errors and variable conditions originating from physical sources used to develop the data may be reflected in the data supplied.  
**This product is not intended to be used for navigation.**  
**Mariners are encouraged to use all prudent safety measures.**

U.S. Army Corps  
of Engineers  
Charleston District





SHEET  
REFERENCE  
NUMBER  
C003

Page 9 of 24

**Atlantic Intercoastal Waterway (AIWW)  
Channel Survey**

The information depicted on this map represents the results of surveys made on the dates indicated and can only be considered as indicating the general conditions existing at that time.  
Concluded on: **16 FEB 2024**

Little River, SC to Bucksport, SC

U.S. ARMY ENGINEER DISTRICT  
CORPS OF ENGINEERS  
CHARLESTON, SOUTH CAROLINA

SPATIAL DATA BRANCH  
69A HAGOOD AVE  
CHARLESTON, SC 29403  
CESAC-GIS@USACE.ARMY.MIL

Designed By:  
**USACE**

Reviewed By:  
**CCW**

Reference Scale:  
**1 inch = 750 feet**

Projection:  
**NAD 1983 StatePlane South Carolina FIPS 3900 Feet**

Survey Date:  
**16 FEB 2024**

Production Date:  
**6 MAR 2024**

Project Reference Number:  
**CESAC-PRA-0001**

Survey Type:  
**CONDITION**

**Shoalest Sounding**

**Sounding**

*Sounding may cover several point areas and is calculated per reach quarter area*  
\*+\* indicates sounding above MLLW

**Depth in feet**

0-3

3 to 6

6 to 9

9 to 12

Greater Than 12

**Production Notes:**

1. The information depicted on this product is for plotting purposes only

2. Vector hydrographic data derived from surveys conducted by the USACE and approved partners

3. Soundings are in feet and refer to Mean Lower Low Water (MLLW)

**This product is not intended to be used for navigation. Mariners are encouraged to use all prudent safety measures.**

U.S. Army Corps of Engineers  
Charleston District


In no event shall the U.S. Army Corps of Engineers, Charleston District Office, Spatial Data Branch be liable for direct, indirect, incidental, consequential or special damages of any kind, including, but not limited to, loss of anticipated profits or benefits arising out of use of or reliance on the data.

These data sets have been developed from the best available sources. Although efforts have been made to ensure that the datasets are accurate and reliable, errors and variable conditions originating from physical sources used to develop the data may be reflected in the data supplied.





SHEET REFERENCE NUMBER C003 Page 9 of 24	<b>Atlantic Intercoastal Waterway (AIWW) Channel Survey</b>		U.S. ARMY ENGINEER DISTRICT CORPS OF ENGINEERS CHARLESTON, SOUTH CAROLINA		Designed By: <b>USACE</b>	Survey Date: <b>16 FEB 2024</b>	Production Date: <b>6 MAR 2024</b>
	The information depicted on this map represents the results of surveys made on the dates indicated and can only be considered as indicating the general conditions existing at that time. <b>Concluded on: 16 FEB 2024</b>		Reviewed By: <b>CCW</b>		Absolute Scale: <b>1:9,000</b>	Project Reference Number: <b>CESAC-PRA-0001</b>	
			Reference Scale: <b>1 inch = 750 feet</b>		Survey Type: <b>CONDITION</b>		
			SPATIAL DATA BRANCH 69A HAGOOD AVE CHARLESTON, SC 29403  CESAC-GIS@USACE.ARMY.MIL		Projection: <b>NAD 1983 StatePlane South Carolina FIPS 3900 Feet</b>		
	Little River, SC to Bucksport, SC						

**Shoalest Sounding**  


**Sounding**  
Sounding may cover several point areas and is calculated per reach quarter area  
"4" indicates sounding above MLLW

**Depth in feet**  


0-3

3 to 6

6 to 9

9 to 12

Greater Than 12




**Production Notes:**

- The information depicted on this product is for plotting purposes only
- Vector hydrographic data derived from surveys conducted by the USACE and approved partners
- Soundings are in feet and refer to Mean Lower Low Water (MLLW)

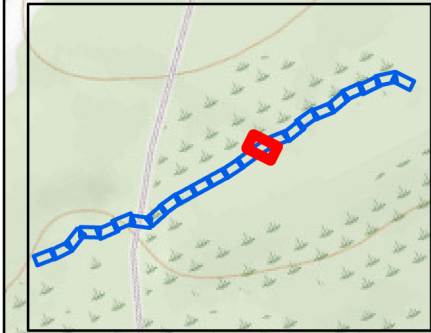
This product is not intended to be used for navigation.  
Mariners are encouraged to use all prudent safety measures.

In no event shall the U.S. Army Corps of Engineers, Charleston District Office, Spatial Data Branch be liable for direct, indirect, incidental, consequential or special damages of any kind, including, but not limited to, loss of anticipated profits or benefits arising out of use of or reliance on the data.

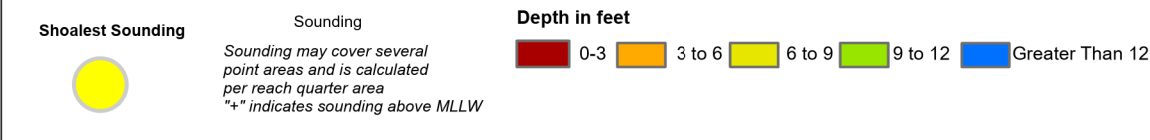
These data sets have been developed from the best available sources. Although efforts have been made to ensure that the datasets are accurate and reliable, errors and variable conditions originating from physical sources used to develop the data may be reflected in the data supplied.

  
U.S. Army Corps  
of Engineers  
Charleston District





SHEET REFERENCE NUMBER <b>C003</b>  Page 10 of 24	<b>Atlantic Intercoastal Waterway (AIWW) Channel Survey</b>		U.S. ARMY ENGINEER DISTRICT CORPS OF ENGINEERS CHARLESTON, SOUTH CAROLINA		Designed By: <b>USACE</b>	Survey Date: <b>16 FEB 2024</b>	Production Date: <b>6 MAR 2024</b>
	The information depicted on this map represents the results of surveys made on the dates indicated and can only be considered as indicating the general conditions existing at that time. <b>Concluded on: 16 FEB 2024</b>  Little River, SC to Bucksport, SC		Reviewed By: <b>CCW</b>		Absolute Scale: <b>1:9,000</b>	Project Reference Number: <b>CESAC-PRA-0001</b>	
			Reference Scale: <b>1 inch = 750 feet</b>		Survey Type: <b>CONDITION</b>		
			SPATIAL DATA BRANCH 69A HAGOOD AVE CHARLESTON, SC 29403  CESAC-GIS@USACE.ARMY.MIL		Projection: <b>NAD 1983 StatePlane South Carolina FIPS 3900 Feet</b>		



**Production Notes:**

- The information depicted on this product is for plotting purposes only
- Vector hydrographic data derived from surveys conducted by the USACE and approved partners
- Soundings are in feet and refer to Mean Lower Low Water (MLLW)

In no event shall the U.S. Army Corps of Engineers, Charleston District Office, Spatial Data Branch be liable for direct, indirect, incidental, consequential or special damages of any kind, including, but not limited to, loss of anticipated profits or benefits arising out of use of or reliance on the data.

These data sets have been developed from the best available sources. Although efforts have been made to ensure that the datasets are accurate and reliable, errors and variable conditions originating from physical sources used to develop the data may be reflected in the data supplied.

**This product is not intended to be used for navigation.**  
Mariners are encouraged to use all prudent safety measures.







Page 11 of 24

C003

SHEET  
REFERENCE  
NUMBER

Atlantic Intercoastal Waterway (AIWW)  
Channel Survey

The information depicted on this map represents the results of surveys made on the dates indicated and can only be considered as indicating the general conditions existing at that time.  
Concluded on: 16 FEB 2024

Little River, SC to Bucksport, SC

U.S. ARMY ENGINEER DISTRICT  
CORPS OF ENGINEERS  
CHARLESTON, SOUTH CAROLINA

Designed By:  
**USACE**  
Reviewed By:  
**CCW**  
Reference Scale:  
**1 inch = 750 feet**  
Projection:  
**NAD 1983 StatePlane South Carolina FIPS 3900 Feet**

Survey Date:  
**16 FEB 2024**  
Project Reference Number:  
**CESAC-PRA-0001**  
Survey Type:  
**CONDITION**

Production Date:  
**6 MAR 2024**

Shoalest Sounding

Sounding

Sounding may cover several point areas and is calculated per reach quarter area  
"4" indicates sounding above MLLW

Depth in feet

0-3

3 to 6

6 to 9

9 to 12

Greater Than 12

Production Notes:

1. The information depicted on this product is for plotting purposes only  
2. Vector hydrographic data derived from surveys conducted by the USACE and approved partners  
3. Soundings are in feet and refer to Mean Lower Low Water (MLLW)  
This product is not intended to be used for navigation.  
Mariners are encouraged to use all prudent safety measures.

In no event shall the U.S. Army Corps of Engineers, Charleston District Office, Spatial Data Branch be liable for direct, indirect, incidental, consequential or special damages of any kind, including, but not limited to, loss of anticipated profits or benefits arising out of use of or reliance on the data.  
These data sets have been developed from the best available sources. Although efforts have been made to ensure that the datasets are accurate and reliable, errors and variable conditions originating from physical sources used to develop the data may be reflected in the data supplied.

U.S. Army Corps  
of Engineers  
Charleston District





Atlantic Intercoastal Waterway (AIWW)  
Channel Survey

The information depicted on this map represents the results of surveys made on the dates indicated and can only be considered as indicating the general conditions existing at that time.  
Concluded on: **16 FEB 2024**

Little River, SC to Bucksport, SC

U.S. ARMY ENGINEER DISTRICT  
CORPS OF ENGINEERS  
CHARLESTON, SOUTH CAROLINA

SPATIAL DATA BRANCH  
69A HAGOOD AVE  
CHARLESTON, SC 29403  
CESAC-GIS@USACE.ARMY.MIL

Designed By:  
**USACE**

Reviewed By:  
**CCW**

Reference Scale:  
**1 inch = 750 feet**

Projection:  
**NAD 1983 StatePlane South Carolina FIPS 3900 Feet**

Survey Date:  
**16 FEB 2024**

Production Date:  
**6 MAR 2024**

Project Reference Number:  
**CESAC-PRA-0001**

Survey Type:  
**CONDITION**

Shoalest Sounding

Sounding

Sounding may cover several point areas and is calculated per reach quarter area  
"4" indicates sounding above MLLW

Depth in feet

0-3

3 to 6

6 to 9

9 to 12

Greater Than 12

Production Notes:

1. The information depicted on this product is for plotting purposes only

2. Vector hydrographic data derived from surveys conducted by the USACE and approved partners

3. Soundings are in feet and refer to Mean Lower Low Water (MLLW)

In no event shall the U.S. Army Corps of Engineers, Charleston District Office, Spatial Data Branch be liable for direct, indirect, incidental, consequential or special damages of any kind, including, but not limited to, loss of anticipated profits or benefits arising out of use of or reliance on the data.

These data sets have been developed from the best available sources. Although efforts have been made to ensure that the datasets are accurate and reliable, errors and variable conditions originating from physical sources used to develop the data may be reflected in the data supplied.

This product is not intended to be used for navigation. Mariners are encouraged to use all prudent safety measures.

U.S. Army Corps  
of Engineers

Charleston District





Page 13 of 24

C003

SHEET  
REFERENCE  
NUMBER

Atlantic Intracoastal Waterway (AIWW)  
Channel Survey

The information depicted on this map represents the results of surveys made on the dates indicated and can only be considered as indicating the general conditions existing at that time.  
Concluded on: 16 FEB 2024

Little River, SC to Bucksport, SC

U.S. ARMY ENGINEER DISTRICT  
CORPS OF ENGINEERS  
CHARLESTON, SOUTH CAROLINA

Designed By:  
**USACE**

Reviewed By:  
**CCW**

SPATIAL DATA BRANCH  
69A HAGOOD AVE  
CHARLESTON, SC 29403  
CESAC-GIS@USACE.ARMY.MIL

Survey Date:  
16 FEB 2024

Production Date:  
6 MAR 2024

Project Reference Number:  
**CESAC-PRA-0001**

Reference Scale:  
1 inch = 750 feet

Survey Type:  
**CONDITION**

Projection:  
**NAD 1983 StatePlane South Carolina FIPS 3900 Feet**

Shoalest Sounding

Sounding

Sounding may cover several point areas and is calculated per reach quarter area  
"4" indicates sounding above MLLW

Depth in feet

0-3

3 to 6

6 to 9

9 to 12

Greater Than 12

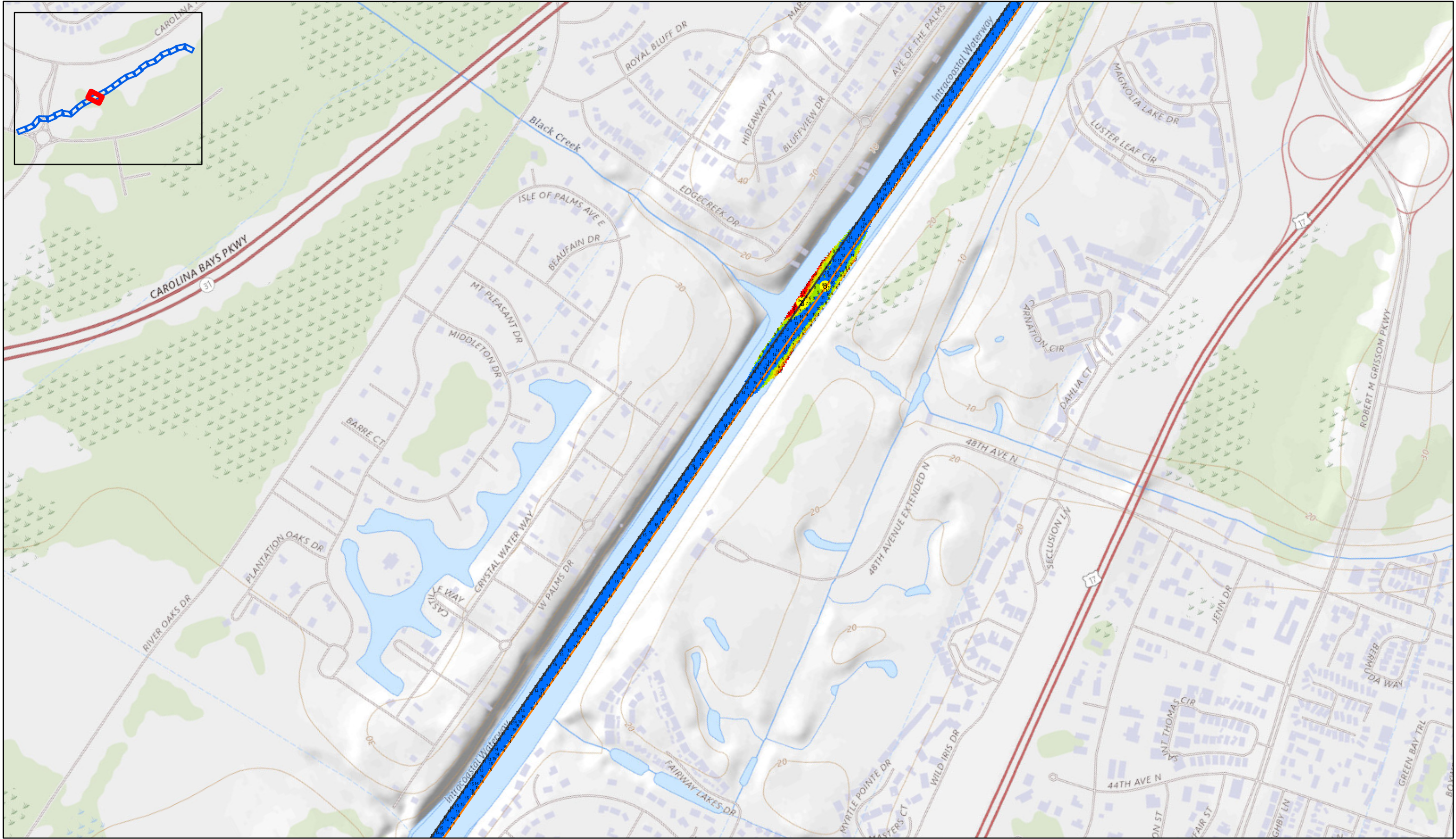
Production Notes:

1. The information depicted on this product is for plotting purposes only  
2. Vector hydrographic data derived from surveys conducted by the USACE and approved partners  
3. Soundings are in feet and refer to Mean Lower Low Water (MLLW)  
This product is not intended to be used for navigation.  
Mariners are encouraged to use all prudent safety measures.

In no event shall the U.S. Army Corps of Engineers, Charleston District Office, Spatial Data Branch be liable for direct, indirect, incidental, consequential or special damages of any kind, including, but not limited to, loss of anticipated profits or benefits arising out of use of or reliance on the data.  
These data sets have been developed from the best available sources. Although efforts have been made to ensure that the datasets are accurate and reliable, errors and variable conditions originating from physical sources used to develop the data may be reflected in the data supplied.

U.S. Army Corps  
of Engineers  
Charleston District





Atlantic Intracoastal Waterway (AIWW)  
Channel Survey

The information depicted on this map represents the results of surveys made on the dates indicated and can only be considered as indicating the general conditions existing at that time.  
Concluded on: **16 FEB 2024**

Little River, SC to Bucksport, SC

U.S. ARMY ENGINEER DISTRICT  
CORPS OF ENGINEERS  
CHARLESTON, SOUTH CAROLINA

SPATIAL DATA BRANCH  
69A HAGOOD AVE  
CHARLESTON, SC 29403  
CESAC-GIS@USACE.ARMY.MIL

Designed By:  
**USACE**

Reviewed By:  
**CCW**

Reference Scale:  
**1 inch = 750 feet**

Projection:  
**NAD 1983 StatePlane South Carolina FIPS 3900 Feet**

Survey Date:  
**16 FEB 2024**

Project Reference Number:  
**CESAC-PRA-0001**

Survey Type:  
**CONDITION**

Production Date:  
**6 MAR 2024**

Shoalest Sounding

Sounding

Sounding may cover several point areas and is calculated per reach quarter area  
"4" indicates sounding above MLLW

Depth in feet

0-3

3 to 6

6 to 9

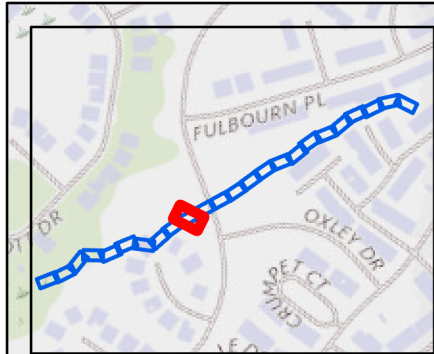
9 to 12

Greater Than 12


**Production Notes:**  
1. The information depicted on this product is for plotting purposes only.  
2. Vector hydrographic data derived from surveys conducted by the USACE and approved partners.  
3. Soundings are in feet and refer to Mean Lower Low Water (MLLW).  
  
In no event shall the U.S. Army Corps of Engineers, Charleston District Office, Spatial Data Branch be liable for direct, indirect, incidental, consequential or special damages of any kind, including, but not limited to, loss of anticipated profits or benefits arising out of use of or reliance on the data.  
These data sets have been developed from the best available sources. Although efforts have been made to ensure that the datasets are accurate and reliable, errors and variable conditions originating from physical sources used to develop the data may be reflected in the data supplied.  
**This product is not intended to be used for navigation.**  
**Mariners are encouraged to use all prudent safety measures.**

U.S. Army Corps of Engineers  
Charleston District







SHEET REFERENCE NUMBER  C003	<b>Atlantic Intercoastal Waterway (AIWW) Channel Survey</b>		Designed By: <b>USACE</b>	Survey Date: <b>16 FEB 2024</b>	Production Date: <b>6 MAR 2024</b>
	The information depicted on this map represents the results of surveys made on the dates indicated and can only be considered as indicating the general conditions existing at that time. Concluded on: <b>16 FEB 2024</b>		Reviewed By: <b>CCW</b>	Absolute Scale: <b>1:9,000</b>	Project Reference Number: <b>CESAC-PRA-0001</b>
	SPATIAL DATA BRANCH 69A HAGOOD AVE. CHARLESTON, SC 29403		Reference Scale: <b>1 inch = 750 feet</b>	Survey Type: <b>CONDITION</b>	
	Little River, SC to Bucksport, SC		Projection: <b>NAD 1983 StatePlane South Carolina FIPS 3900 Feet</b>		

**Shoalest Sounding**  


**Sounding**  
Sounding may cover several point areas and is calculated per reach quarter area  
"4" indicates sounding above MLLW

**Depth in feet**  





**Production Notes:**  
1. The information depicted on this product is for plotting purposes only.  
2. Vector hydrographic data derived from surveys conducted by the USACE and approved partners.  
3. Soundings are in feet and refer to Mean Lower Low Water (MLLW).  
**This product is not intended to be used for navigation. Mariners are encouraged to use all prudent safety measures.**

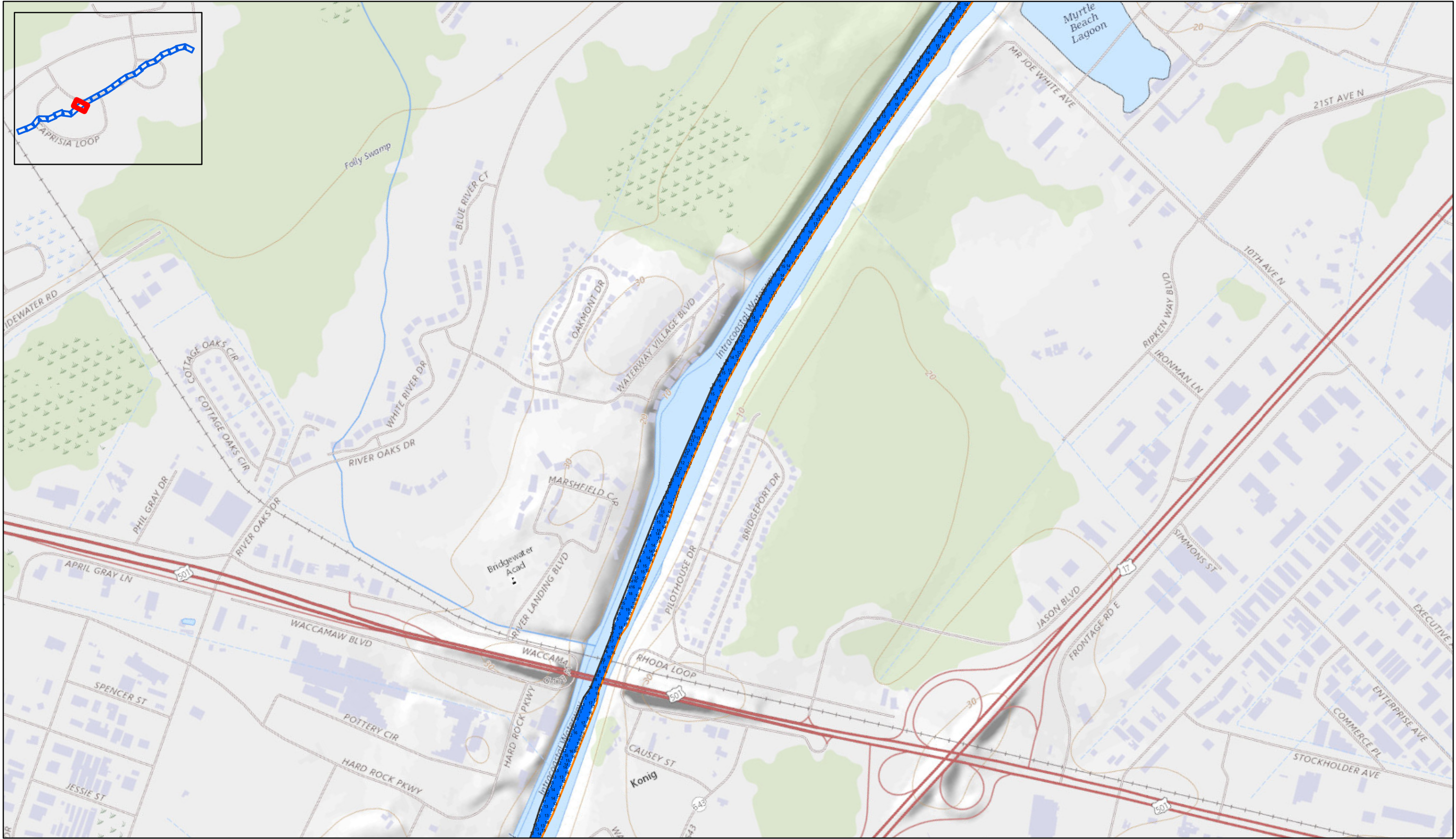
In no event shall the U.S. Army Corps of Engineers, Charleston District Office, Spatial Data Branch be liable for direct, indirect, incidental, consequential or special damages of any kind, including, but not limited to, loss of anticipated profits or benefits arising out of use of or reliance on the data.

These data sets have been developed from the best available sources. Although efforts have been made to ensure that the datasets are accurate and reliable, errors and variable conditions originating from physical sources used to develop the data may be reflected in the data supplied.

**This product is not intended to be used for navigation. Mariners are encouraged to use all prudent safety measures.**

  
U.S. Army Corps of Engineers  
Charleston District





Page 16 of 24

SHEET  
REFERENCE  
NUMBER  
C003

Atlantic Intercoastal Waterway (AIWW)  
Channel Survey

The information depicted on this map represents the results of surveys made on the dates indicated and can only be considered as indicating the general conditions existing at that time.  
Concluded on: **16 FEB 2024**

Little River, SC to Bucksport, SC

U.S. ARMY ENGINEER DISTRICT  
CORPS OF ENGINEERS  
CHARLESTON, SOUTH CAROLINA

SPATIAL DATA BRANCH  
69A HAGOOD AVE  
CHARLESTON, SC 29403  
CESAC-GIS@USACE.ARMY.MIL

Designed By:  
**USACE**

Reviewed By:  
**CCW**

Reference Scale:  
**1 inch = 750 feet**

Projection:  
**NAD 1983 StatePlane South Carolina FIPS 3900 Feet**

Survey Date:  
**16 FEB 2024**

Project Reference Number:  
**CESAC-PRA-0001**

Survey Type:  
**CONDITION**

Production Date:  
**6 MAR 2024**

Shoalest Sounding

Sounding

Sounding may cover several point areas and is calculated per reach quarter area  
"4" indicates sounding above MLLW

Depth in feet

0-3

3 to 6

6 to 9

9 to 12

Greater Than 12

Production Notes:

1. The information depicted on this product is for plotting purposes only

2. Vector hydrographic data derived from surveys conducted by the USACE and approved partners

3. Soundings are in feet and refer to Mean Lower Low Water (MLLW)

In no event shall the U.S. Army Corps of Engineers, Charleston District Office, Spatial Data Branch be liable for direct, indirect, incidental, consequential or special damages of any kind, including, but not limited to, loss of anticipated profits or benefits arising out of use of or reliance on the data.

These data sets have been developed from the best available sources. Although efforts have been made to ensure that the datasets are accurate and reliable, errors and variable conditions originating from physical sources used to develop the data may be reflected in the data supplied.


This product is not intended to be used for navigation. Mariners are encouraged to use all prudent safety measures.

U.S. Army Corps  
of Engineers  
Charleston District







SHEET REFERENCE NUMBER  C003  Page 17 of 24	<b>Atlantic Intercoastal Waterway (AIWW) Channel Survey</b>		Designed By: <b>USACE</b>	Survey Date: <b>16 FEB 2024</b>	Production Date: <b>6 MAR 2024</b>
	The information depicted on this map represents the results of surveys made on the dates indicated and can only be considered as indicating the general conditions existing at that time. Concluded on: <b>16 FEB 2024</b>		Reviewed By: <b>CCW</b>	Absolute Scale: <b>1:9,000</b>	Project Reference Number: <b>CESAC-PRA-0001</b>
	SPATIAL DATA BRANCH 69A HAGOOD AVE CHARLESTON, SC 29403		Reference Scale: <b>1 inch = 750 feet</b>	Survey Type: <b>CONDITION</b>	
	Little River, SC to Bucksport, SC		Projection: <b>NAD 1983 StatePlane South Carolina FIPS 3900 Feet</b>		


**Shoalest Sounding**  


**Sounding**  
Sounding may cover several point areas and is calculated per reach quarter area  
"4" indicates sounding above MLLW

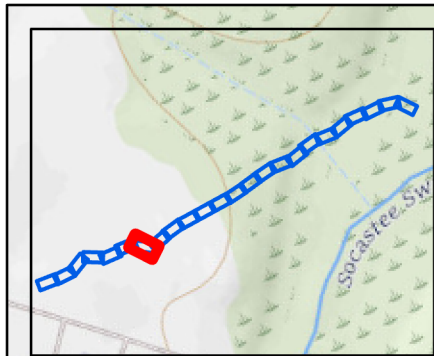
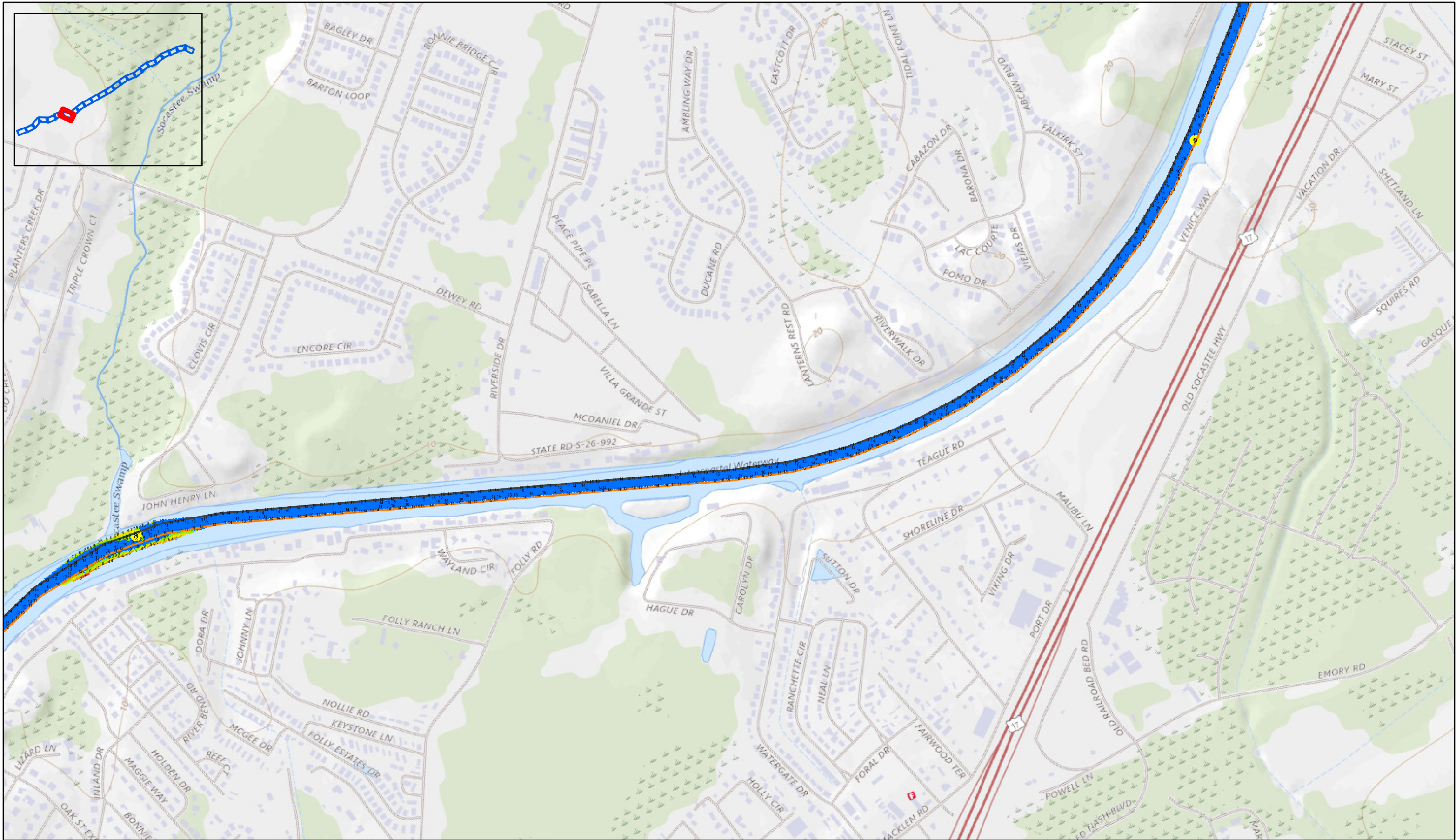
**Depth in feet**  




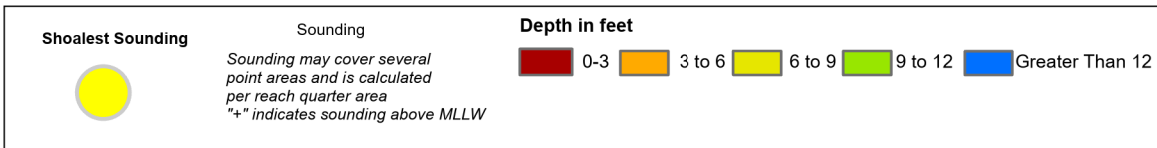
**Production Notes:**  
1. The information depicted on this product is for plotting purposes only  
2. Vector hydrographic data derived from surveys conducted by the USACE and approved partners  
3. Soundings are in feet and refer to Mean Lower Low Water (MLLW)  
  
In no event shall the U.S. Army Corps of Engineers, Charleston District Office, Spatial Data Branch be liable for direct, indirect, incidental, consequential or special damages of any kind, including, but not limited to, loss of anticipated profits or benefits arising out of use of or reliance on the data.  
These data sets have been developed from the best available sources. Although efforts have been made to ensure that the datasets are accurate and reliable, errors and variable conditions originating from physical sources used to develop the data may be reflected in the data supplied.  
**This product is not intended to be used for navigation.  
Mariners are encouraged to use all prudent safety measures.**

  
U.S. Army Corps  
of Engineers  
Charleston District





SHEET REFERENCE NUMBER <b>C003</b>  Page 18 of 24	<b>Atlantic Intercoastal Waterway (AIWW) Channel Survey</b> The information depicted on this map represents the results of surveys made on the dates indicated and can only be considered as indicating the general conditions existing at that time. Concluded on: <b>16 FEB 2024</b>  Little River, SC to Bucksport, SC		Designed By: <b>USACE</b> Reviewed By: <b>CCW</b> Reference Scale: <b>1 inch = 750 feet</b> Projection: <b>NAD 1983 StatePlane South Carolina FIPS 3900 Feet</b>		Survey Date: <b>16 FEB 2024</b> Project Reference Number: <b>CESAC-PRA-0001</b> Survey Type: <b>CONDITION</b>	Production Date: <b>6 MAR 2024</b>
	U.S. ARMY ENGINEER DISTRICT CORPS OF ENGINEERS CHARLESTON, SOUTH CAROLINA		SPATIAL DATA BRANCH 69A HAGOOD AVE CHARLESTON, SC 29403 CESAC-GIS@USACE.ARMY.MIL			



**Production Notes:**

- The information depicted on this product is for plotting purposes only.
- Vector hydrographic data derived from surveys conducted by the USACE and approved partners.
- Soundings are in feet and refer to Mean Lower Low Water (MLLW).

**This product is not intended to be used for navigation. Mariners are encouraged to use all prudent safety measures.**

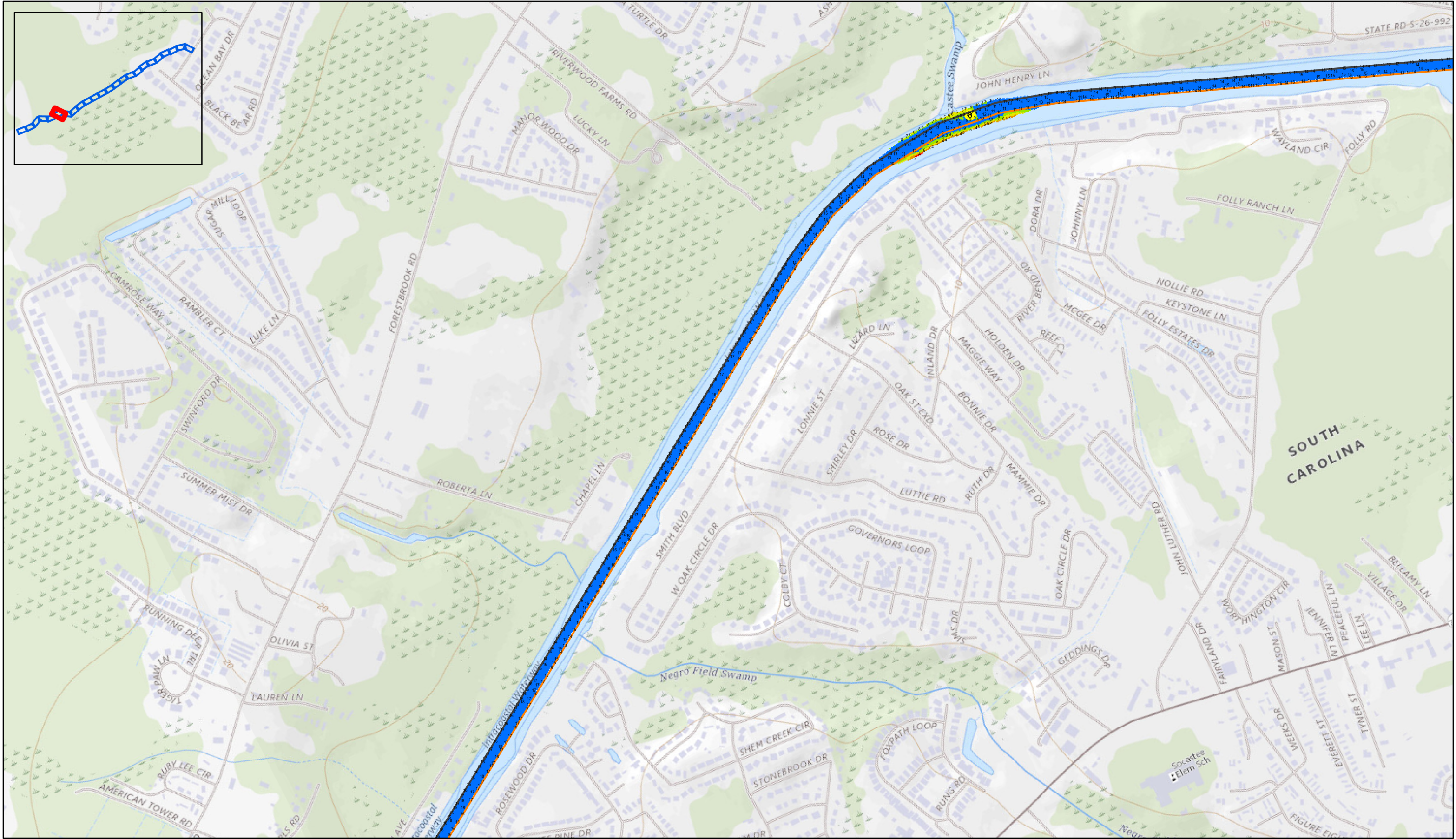
In no event shall the U.S. Army Corps of Engineers, Charleston District Office, Spatial Data Branch be liable for direct, indirect, incidental, consequential or special damages of any kind, including, but not limited to, loss of anticipated profits or benefits arising out of use of or reliance on the data.

These data sets have been developed from the best available sources. Although efforts have been made to ensure that the datasets are accurate and reliable, errors and variable conditions originating from physical sources used to develop the data may be reflected in the data supplied.

**This product is not intended to be used for navigation. Mariners are encouraged to use all prudent safety measures.**

U.S. Army Corps of Engineers  
Charleston District





SHEET REFERENCE NUMBER  C003	<b>Atlantic Intercoastal Waterway (AIWW) Channel Survey</b>		Designed By: <b>USACE</b>	Survey Date: <b>16 FEB 2024</b>	Production Date: <b>6 MAR 2024</b>
	The information depicted on this map represents the results of surveys made on the dates indicated and can only be considered as indicating the general conditions existing at that time. Concluded on: <b>16 FEB 2024</b>		Reviewed By: <b>CCW</b>	Project Reference Number: <b>CESAC-PRA-0001</b>	
	SPATIAL DATA BRANCH 69A HAGOOD AVE. CHARLESTON, SC 29403		Reference Scale: <b>1 inch = 750 feet</b>	Survey Type: <b>CONDITION</b>	
	Little River, SC to Bucksport, SC		Projection: <b>NAD 1983 StatePlane South Carolina FIPS 3900 Feet</b>		

**Shoalest Sounding**

**Sounding**

Sounding may cover several point areas and is calculated per reach quarter area

\*+ indicates sounding above MLLW

**Depth in feet**

0-3	3 to 6	6 to 9	9 to 12	Greater Than 12
-----	--------	--------	---------	-----------------

**Production Notes:**

- The information depicted on this product is for plotting purposes only
- Vector hydrographic data derived from surveys conducted by the USACE and approved partners
- Soundings are in feet and refer to Mean Lower Low Water (MLLW)

**This product is not intended to be used for navigation. Mariners are encouraged to use all prudent safety measures.**

In no event shall the U.S. Army Corps of Engineers, Charleston District Office, Spatial Data Branch be liable for direct, indirect, incidental, consequential or special damages of any kind, including, but not limited to, loss of anticipated profits or benefits arising out of use of or reliance on the data.

These data sets have been developed from the best available sources. Although efforts have been made to ensure that the datasets are accurate and reliable, errors and variable conditions originating from physical sources used to develop the data may be reflected in the data supplied.

**U.S. Army Corps of Engineers**  
Charleston District





Atlantic Intercoastal Waterway (AIWW)  
Channel Survey

The information depicted on this map represents the results of surveys made on the dates indicated and can only be considered as indicating the general conditions existing at that time.  
Concluded on: 16 FEB 2024

Little River, SC to Bucksport, SC

U.S. ARMY ENGINEER DISTRICT  
CORPS OF ENGINEERS  
CHARLESTON, SOUTH CAROLINA

SPATIAL DATA BRANCH  
69A HAGOOD AVE  
CHARLESTON, SC 29403  
CESAC-GIS@USACE.ARMY.MIL

Designed By:  
**USACE**

Reviewed By:  
**CCW**

Reference Scale:  
**1 inch = 750 feet**

Projection:  
**NAD 1983 StatePlane South Carolina FIPS 3900 Feet**

Survey Date:  
**16 FEB 2024**

Project Reference Number:  
**CESAC-PRA-0001**

Survey Type:  
**CONDITION**

Production Date:  
**6 MAR 2024**

Shoalest Sounding

Sounding may cover several point areas and is calculated per reach quarter area  
"++" indicates sounding above MLLW

Depth in feet

0-3

3 to 6

6 to 9

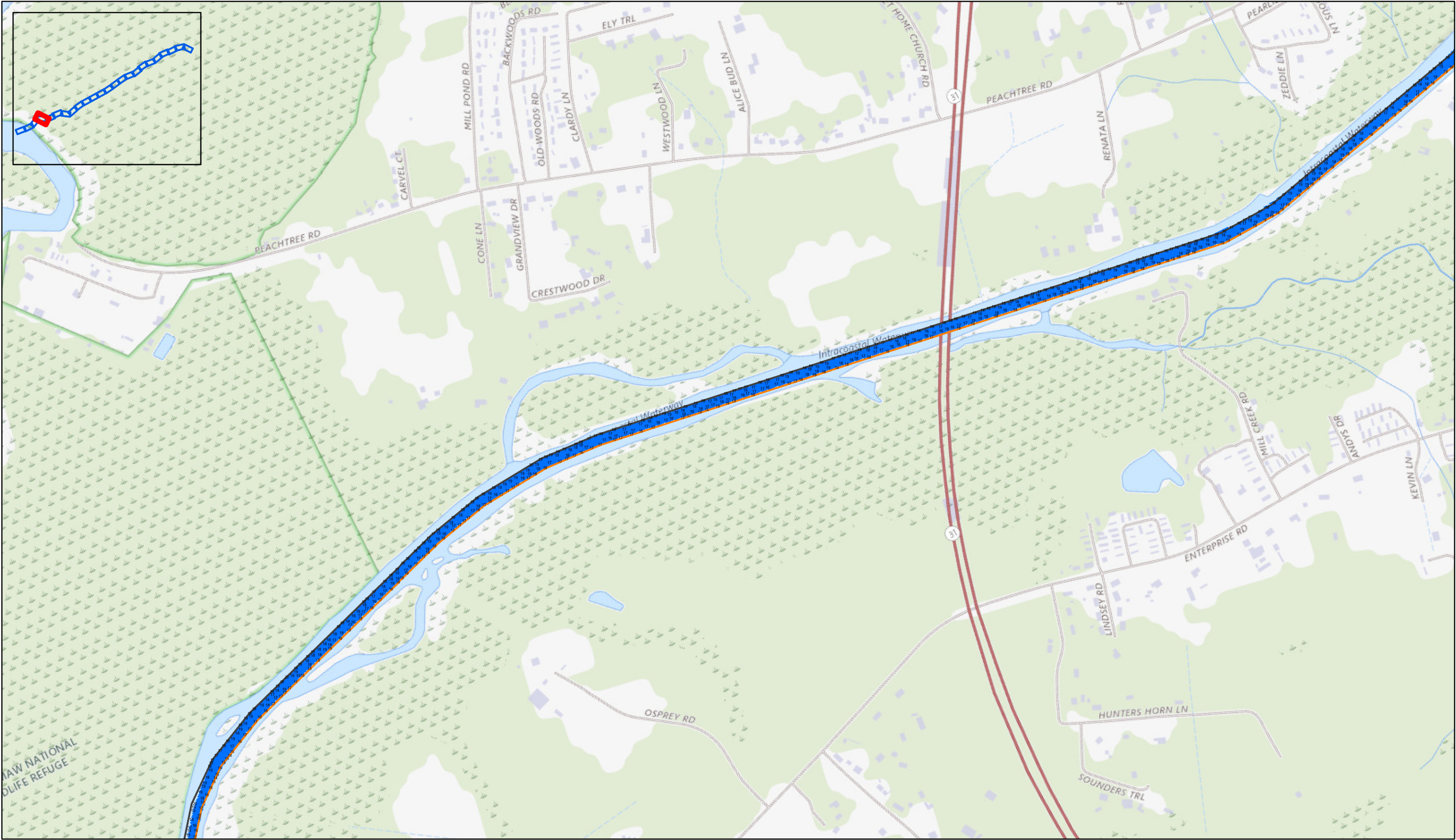
9 to 12

Greater Than 12

**Production Notes:**  
1. The information depicted on this product is for plotting purposes only.  
2. Vector hydrographic data derived from surveys conducted by the USACE and approved partners.  
3. Soundings are in feet and refer to Mean Lower Low Water (MLLW).  
  
In no event shall the U.S. Army Corps of Engineers, Charleston District Office, Spatial Data Branch be liable for direct, indirect, incidental, consequential or special damages of any kind, including, but not limited to, loss of anticipated profits or benefits arising out of use of or reliance on the data.  
These data sets have been developed from the best available sources. Although efforts have been made to ensure that the datasets are accurate and reliable, errors and variable conditions originating from physical sources used to develop the data may be reflected in the data supplied.  
**This product is not intended to be used for navigation. Mariners are encouraged to use all prudent safety measures.**

U.S. Army Corps of Engineers  
Charleston District





SHEET  
REFERENCE  
NUMBER  
C003

Page 21 of 24

**Atlantic Intracoastal Waterway (AIWW)  
Channel Survey**  
The information depicted on this map represents the results of surveys made on the dates indicated and can only be considered as indicating the general conditions existing at that time.  
Concluded on: **16 FEB 2024**  
  
Little River, SC to Bucksport, SC

U.S. ARMY ENGINEER DISTRICT  
CORPS OF ENGINEERS  
CHARLESTON, SOUTH CAROLINA

Designed By:  
**USACE**

Reviewed By:  
**CCW**

Reference Scale:  
**1 inch = 750 feet**

Projection:  
**NAD 1983 StatePlane South Carolina FIPS 3900 Feet**

Survey Date:  
**16 FEB 2024**

Production Date:  
**6 MAR 2024**

Project Reference Number:  
**CESAC-PRA-0001**

Survey Type:  
**CONDITION**

**Shoalest Sounding**

**Sounding**  
Sounding may cover several point areas and is calculated per reach quarter area  
"++" indicates sounding above MLLW

**Depth in feet**  

0-3	3 to 6	6 to 9	9 to 12	Greater Than 12
-----	--------	--------	---------	-----------------

**Production Notes:**  
1. The information depicted on this product is for plotting purposes only.  
2. Vector hydrographic data derived from surveys conducted by the USACE and approved partners.  
3. Soundings are in feet and refer to Mean Lower Low Water (MLLW).  
  
This product is not intended to be used for navigation. Mariners are encouraged to use all prudent safety measures.

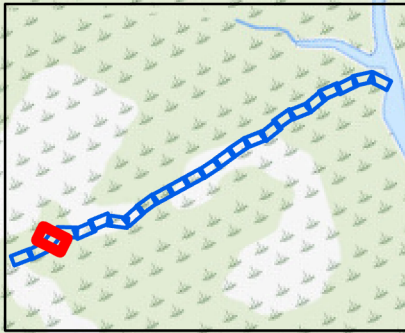
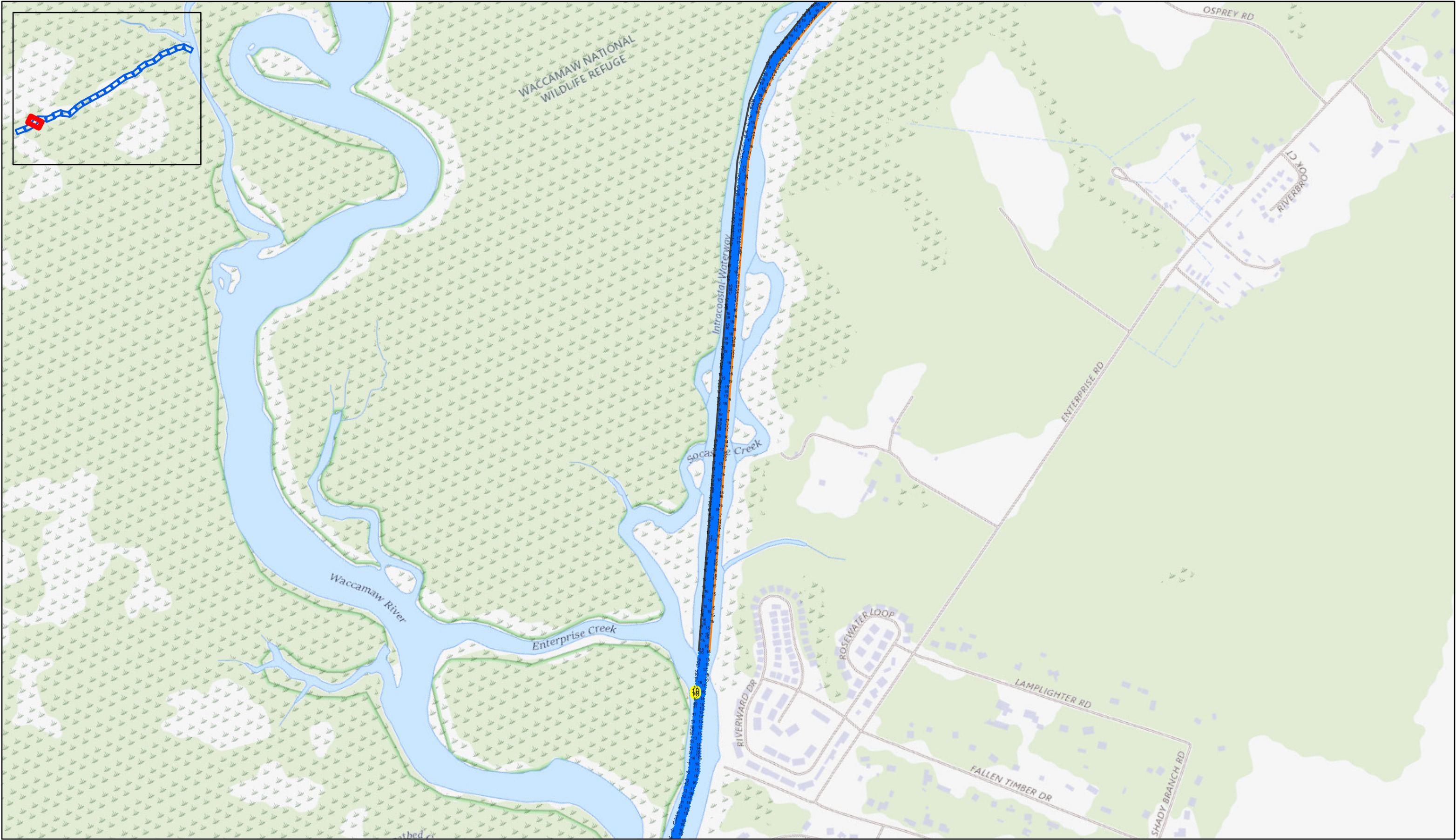
In no event shall the U.S. Army Corps of Engineers, Charleston District Office, Spatial Data Branch be liable for direct, indirect, incidental, consequential or special damages of any kind, including, but not limited to, loss of anticipated profits or benefits arising out of use of or reliance on the data.

These data sets have been developed from the best available sources. Although efforts have been made to ensure that the datasets are accurate and reliable, errors and variable conditions originating from physical sources used to develop the data may be reflected in the data supplied.

**This product is not intended to be used for navigation. Mariners are encouraged to use all prudent safety measures.**

U.S. Army Corps of Engineers  
Charleston District





Page 22 of 24

SHEET  
REFERENCE  
NUMBER  
C003

**Atlantic Intercoastal Waterway (AIWW)  
Channel Survey**

The information depicted on this map represents the results of surveys made on the dates indicated and can only be considered as indicating the general conditions existing at that time.  
Concluded on: **16 FEB 2024**

Little River, SC to Bucksport, SC

U.S. ARMY ENGINEER DISTRICT CORPS OF ENGINEERS CHARLESTON, SOUTH CAROLINA	Designed By: <b>USACE</b>	Survey Date: <b>16 FEB 2024</b>	Production Date: <b>6 MAR 2024</b>
	Reviewed By: <b>CCW</b>	Absolute Scale: <b>1:9,000</b>	Project Reference Number: <b>CESAC-PRA-0001</b>
	SPATIAL DATA BRANCH 69A HAGOOD AVE CHARLESTON, SC 29403 CESAC-GIS@USACE.ARMY.MIL	Reference Scale: <b>1 inch = 750 feet</b>	Survey Type: <b>CONDITION</b>
Projection: <b>NAD 1983 StatePlane South Carolina FIPS 3900 Feet</b>			

**Shoalest Sounding**

**Sounding**

*Sounding may cover several point areas and is calculated per reach quarter area*  
"++" indicates sounding above MLLW

**Depth in feet**

0-3

3 to 6

6 to 9

9 to 12

Greater Than 12

**Production Notes:**

1. The information depicted on this product is for plotting purposes only  
2. Vector hydrographic data derived from surveys conducted by the USACE and approved partners  
3. Soundings are in feet and refer to Mean Lower Low Water (MLLW)

In no event shall the U.S. Army Corps of Engineers, Charleston District Office, Spatial Data Branch be liable for direct, indirect, incidental, consequential or special damages of any kind, including, but not limited to, loss of anticipated profits or benefits arising out of use of or reliance on the data.  
These data sets have been developed from the best available sources. Although efforts have been made to ensure that the datasets are accurate and reliable, errors and variable conditions originating from physical sources used to develop the data may be reflected in the data supplied.  
**This product is not intended to be used for navigation. Mariners are encouraged to use all prudent safety measures.**

U.S. Army Corps  
of Engineers  
Charleston District





SHEET REFERENCE NUMBER  C003  Page 23 of 24	<b>Atlantic Intercoastal Waterway (AIWW) Channel Survey</b> The information depicted on this map represents the results of surveys made on the dates indicated and can only be considered as indicating the general conditions existing at that time. Concluded on: <b>16 FEB 2024</b>  Little River, SC to Bucksport, SC		U.S. ARMY ENGINEER DISTRICT CORPS OF ENGINEERS CHARLESTON, SOUTH CAROLINA		Designed By: <b>USACE</b>	Survey Date: <b>16 FEB 2024</b>	Production Date: <b>6 MAR 2024</b>
	SPATIAL DATA BRANCH 69A HAGOOD AVE CHARLESTON, SC 29403 CESAC-GIS@USACE.ARMY.MIL		Reviewed By: <b>CCW</b>		Absolute Scale: <b>1:9,000</b>	Project Reference Number: <b>CESAC-PRA-0001</b>	
			Reference Scale: <b>1 inch = 750 feet</b>		Survey Type: <b>CONDITION</b>		
			Projection: <b>NAD 1983 StatePlane South Carolina FIPS 3900 Feet</b>				

**Shoalest Sounding**

**Sounding**  
Sounding may cover several point areas and is calculated per reach quarter area  
"4" indicates sounding above MLLW

**Depth in feet**  

0-3	3 to 6	6 to 9	9 to 12	Greater Than 12
-----	--------	--------	---------	-----------------



**Production Notes:**

- The information depicted on this product is for plotting purposes only
- Vector hydrographic data derived from surveys conducted by the USACE and approved partners
- Soundings are in feet and refer to Mean Lower Low Water (MLLW)

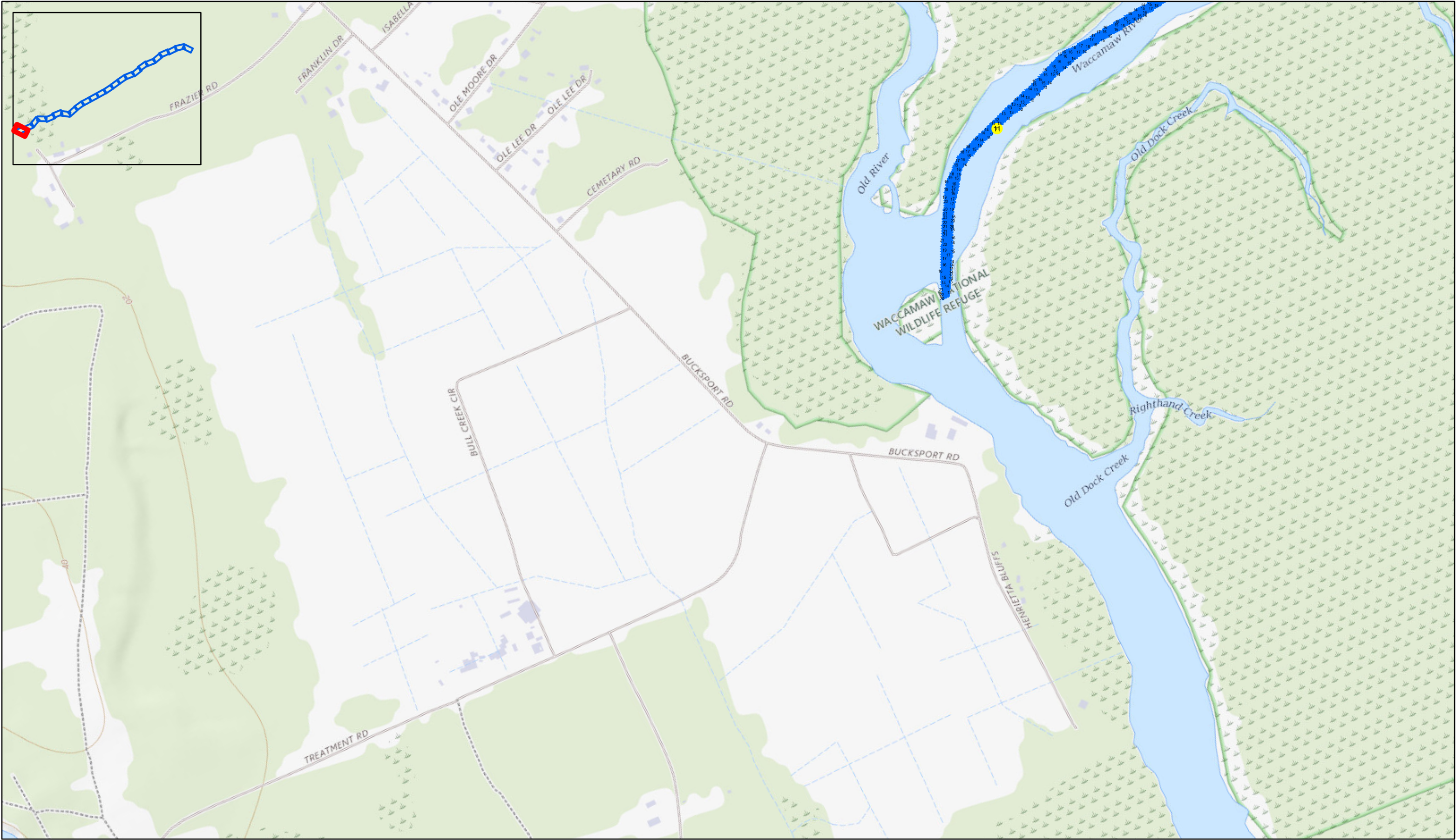
In no event shall the U.S. Army Corps of Engineers, Charleston District Office, Spatial Data Branch be liable for direct, indirect, incidental, consequential or special damages of any kind, including, but not limited to, loss of anticipated profits or benefits arising out of use of or reliance on the data.

These data sets have been developed from the best available sources. Although efforts have been made to ensure that the datasets are accurate and reliable, errors and variable conditions originating from physical sources used to develop the data may be reflected in the data supplied.


**This product is not intended to be used for navigation. Mariners are encouraged to use all prudent safety measures.**









SHEET REFERENCE NUMBER <b>C003</b>  Page 24 of 24	<b>Atlantic Intercoastal Waterway (AIWW) Channel Survey</b> The information depicted on this map represents the results of surveys made on the dates indicated and can only be considered as indicating the general conditions existing at that time. Concluded on: <b>16 FEB 2024</b>  Little River, SC to Bucksport, SC		U.S. ARMY ENGINEER DISTRICT CORPS OF ENGINEERS CHARLESTON, SOUTH CAROLINA	
	Designed By: <b>USACE</b>	Survey Date: <b>16 FEB 2024</b>	Production Date: <b>6 MAR 2024</b>	
	Reviewed By: <b>CCW</b>	Absolute Scale: <b>1:9,000</b>	Project Reference Number: <b>CESAC-PRA-0001</b>	
	SPATIAL DATA BRANCH 69A HAGOOD AVE. CHARLESTON, SC 29403 CESAC-GIS@USACE.ARMY.MIL	Reference Scale: <b>1 inch = 750 feet</b>	Survey Type: <b>CONDITION</b>	Projection: <b>NAD 1983 StatePlane South Carolina FIPS 3900 Feet</b>


**Shoalest Sounding**  


**Sounding**  
*Sounding may cover several point areas and is calculated per reach quarter area*  
"+" indicates sounding above MLLW

**Depth in feet**  




**Production Notes:**  
1. The information depicted on this product is for plotting purposes only.  
2. Vector hydrographic data derived from surveys conducted by the USACE and approved partners.  
3. Soundings are in feet and refer to Mean Lower Low Water (MLLW).  
  
In no event shall the U.S. Army Corps of Engineers, Charleston District Office, Spatial Data Branch be liable for direct, indirect, incidental, consequential or special damages of any kind, including, but not limited to, loss of anticipated profits or benefits arising out of use of or reliance on the data.  
These data sets have been developed from the best available sources. Although efforts have been made to ensure that the datasets are accurate and reliable, errors and variable conditions originating from physical sources used to develop the data may be reflected in the data supplied.  
**This product is not intended to be used for navigation. Mariners are encouraged to use all prudent safety measures.**

  
U.S. Army Corps of Engineers  
Charleston District