

2527000 79°16'30"W 2528000 2529000 79°16'0"W 2530000 2531000 2532000 79°15'30"W 2533000 2534000 79°15'0"W 2535000



2527000 79°16'30"W 2528000 2529000 79°16'0"W 2530000 2531000 2532000 79°15'30"W 2533000 2534000 79°15'0"W 2535000

SHEET REFERENCE NUMBER
C003
Page 1 of 48

Atlantic Intercoastal Waterway (AIWW) Channel Survey
The information depicted on this map represents the results of surveys made on the dates indicated and can only be considered as indicating the general conditions existing at that time.
Concluded on: **04 NOV 2015**
Charleston, SC to Port Royal, SC

U.S. ARMY ENGINEER DISTRICT
CORPS OF ENGINEERS
CHARLESTON, SOUTH CAROLINA
SPATIAL DATA BRANCH
69A HAGOOD AVE
CHARLESTON, SC 29403
CESAC-GIS@USACE.ARMY.MIL

Designed By: eHydro Software v3.82	Survey Date: dd MMM yyyy 20 NOV 2015	Production Date: 20 NOV 2015
Reviewed By: M. BOLES	Absolute Scale: 1:6,000	Project Reference Number: CESAC-PR-0001
Reference Scale: 1 inch = 500 feet	Survey Type: CONDITION	
Projection: NAD 1983 StatePlane South Carolina FIPS 3900 Feet		

Shoalest Sounding
● Sounding
Sounding may cover several point areas and is calculated per reach quarter area
"±" indicates sounding above MLLW

USCG Beacon
■ Green
▲ Red
□ White

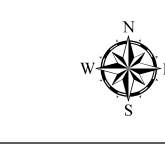
USCG Buoy
● Green
● Red
● Coast Guard Racon

○ White
○ Yellow
○ USCG Light

Depth in feet

Less than 3	3 to 12	Greater than 12
-------------	---------	-----------------

0 250 500 1,000 1,500 Feet



Production Notes:
1. The information depicted on this product is for plotting purposes only.
2. Vector hydrographic data derived from surveys conducted by the USACE and approved partners.
3. Soundings are in feet and refer to Mean Lower Low Water (MLLW).
4. Raster Background: ArcGIS Online Image Basemap dated 2010 - 2011.

In no event shall the U.S. Army Corps of Engineers, Charleston District Office, Spatial Data Branch be liable for direct, indirect, incidental, consequential or special damages of any kind, including, but not limited to, loss of anticipated profits or benefits arising out of use of or reliance on the data.
These data sets have been developed from the best available sources. Although efforts have been made to ensure that the datasets are accurate and reliable, errors and variable conditions originating from physical sources used to develop the data may be reflected in the data supplied.
This product is not intended to be used for navigation.
Mariners are encouraged to use all prudent safety measures.



2526000 2527000 2528000 2529000 2530000 2531000 2532000 2533000

2526000 2527000 2528000 2529000 2530000 2531000 2532000 2533000

518000 519000 520000 521000

33°15'0"N

518000 519000 520000 521000

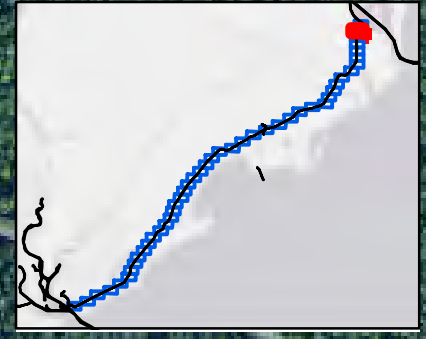
33°15'0"N

518000 519000 520000 521000

33°15'0"N

518000 519000 520000 521000

33°15'0"N



SHEET
REFERENCE
NUMBER
C003
Page 2 of 48

**Atlantic Intercoastal Waterway (AIWW)
Channel Survey**
The information depicted on this map represents the results of surveys made on the dates indicated and can only be considered as indicating the general conditions existing at that time.
Concluded on: **04 NOV 2015**
Charleston, SC to Port Royal, SC

U.S. ARMY ENGINEER DISTRICT
CORPS OF ENGINEERS
CHARLESTON, SOUTH CAROLINA

SPATIAL DATA BRANCH
69A HAGOOD AVE
CHARLESTON, SC 29403
CESAC-GIS@USACE.ARMY.MIL

Designed By:
eHydro Software v3.82
Reviewed By:
M. BOLES
Reference Scale:
1 inch = 500 feet
Projection:
NAD 1983 StatePlane South Carolina FIPS 3900 Feet

Survey Date:
dd MMM yyyy
20 NOV 2015
Project Reference Number:
CESAC-PRA-0001
Survey Type:
CONDITION

Shoalest Sounding
● Sounding
Sounding may cover several point areas and is calculated per reach quarter area
*+ indicates sounding above MLLW

USCG Beacon
■ Green
▲ Red
□ White

USCG Buoy
● Green
● Red
● Coast Guard Racon

○ White
○ Yellow
○ USCG Light

Depth in feet
■ Less than 3
■ 3 to 12
■ Greater than 12
0 250 500 1,000 1,500 Feet



Production Notes:
1. The information depicted on this product is for plotting purposes only.
2. Vector hydrographic data derived from surveys conducted by the USACE and approved partners.
3. Soundings are in feet and refer to Mean Lower Low Water (MLLW).
4. Raster Background: ArcGIS Online Image Basemap dated 2010 - 2011.
This product is not intended to be used for navigation. Mariners are encouraged to use all prudent safety measures.

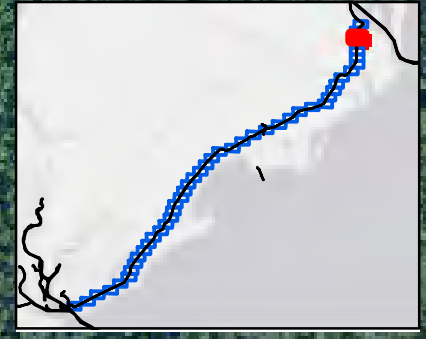
In no event shall the U.S. Army Corps of Engineers, Charleston District Office, Spatial Data Branch be liable for direct, indirect, incidental, consequential or special damages of any kind, including, but not limited to, loss of anticipated profits or benefits arising out of use of or reliance on the data.
These data sets have been developed from the best available sources. Although efforts have been made to ensure that the datasets are accurate and reliable, errors and variable conditions originating from physical sources used to develop the data may be reflected in the data supplied.
This product is not intended to be used for navigation. Mariners are encouraged to use all prudent safety measures.



2526000 2527000 79°16'30"W 2528000 2529000 79°16'0"W 2530000 2531000 79°15'30"W 2532000 2533000

517000 516000 515000 514000 513000

517000 516000 515000 514000 513000



2526000 2527000 79°16'30"W 2528000 2529000 79°16'0"W 2530000 2531000 79°15'30"W 2532000 2533000

SHEET
REFERENCE
NUMBER
C003
Page 3 of 48

**Atlantic Intercoastal Waterway (AIWW)
Channel Survey**
The information depicted on this map represents the results of surveys made on the dates indicated and can only be considered as indicating the general conditions existing at that time.
Concluded on: **04 NOV 2015**
Charleston, SC to Port Royal, SC

U.S. ARMY ENGINEER DISTRICT
CORPS OF ENGINEERS
CHARLESTON, SOUTH CAROLINA
SPATIAL DATA BRANCH
69A HAGOOD AVE
CHARLESTON, SC 29403
CESAC-GIS@USACE.ARMY.MIL

Designed By: eHydro Software v3.82	Survey Date: dd MMM yyyy 20 NOV 2015	Production Date: 20 NOV 2015
Reviewed By: M. BOLES	Absolute Scale: 1:6,000	Project Reference Number: CESAC-PRA-0001
Reference Scale: 1 inch = 500 feet	Survey Type: CONDITION	
Projection: NAD 1983 StatePlane South Carolina FIPS 3900 Feet		

Shoalest Sounding
● Sounding
Sounding may cover several point areas and is calculated per reach quarter area
*+ indicates sounding above MLLW

USCG Beacon
■ Green
▲ Red
□ White

USCG Buoy
● Green
● Red
● Coast Guard Racon

USCG Light
○ White
○ Yellow

Depth in feet

Less than 3	3 to 12	Greater than 12
-------------	---------	-----------------

0 250 500 1,000 1,500 Feet



Production Notes:
1. The information depicted on this product is for plotting purposes only.
2. Vector hydrographic data derived from surveys conducted by the USACE and approved partners.
3. Soundings are in feet and refer to Mean Lower Low Water (MLLW).
4. Raster Background: ArcGIS Online Image Basemap dated 2010 - 2011.
In no event shall the U.S. Army Corps of Engineers, Charleston District Office, Spatial Data Branch be liable for direct, indirect, incidental, consequential or special damages of any kind, including, but not limited to, loss of anticipated profits or benefits arising out of use of or reliance on the data.
These data sets have been developed from the best available sources. Although efforts have been made to ensure that the datasets are accurate and reliable, errors and variable conditions originating from physical sources used to develop the data may be reflected in the data supplied.
This product is not intended to be used for navigation.
Mariners are encouraged to use all prudent safety measures.





SHEET REFERENCE NUMBER
C003
 Page 4 of 48

Atlantic Intracoastal Waterway (AIWW) Channel Survey
 The information depicted on this map represents the results of surveys made on the dates indicated and can only be considered as indicating the general conditions existing at that time.
 Concluded on: **04 NOV 2015**
 Charleston, SC to Port Royal, SC

U.S. ARMY ENGINEER DISTRICT CORPS OF ENGINEERS CHARLESTON, SOUTH CAROLINA SPATIAL DATA BRANCH 69A HAGOOD AVE CHARLESTON, SC 29403 CESAC-GIS@USACE.ARMY.MIL	Designed By: eHydro Software v3.8.2 Reviewed By: M. BOLES Reference Scale: 1 inch = 500 feet Projection: NAD 1983 StatePlane South Carolina FIPS 3900 Feet	Survey Date: dd MMM yyyy 20 NOV 2015 Project Reference Number: CESAC-PRA-0001 Survey Type: CONDITION	Production Date: 20 NOV 2015
--	---	--	--

Shoalest Sounding
 ● Sounding
Sounding may cover several point areas and is calculated per reach quarter area
 *+ indicates sounding above MLLW

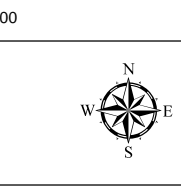
USCG Beacon
 ■ Green
 ▲ Red
 □ White

USCG Buoy
 ● Green
 ● Red
 ● Coast Guard Racon

● White
 ● Yellow
 ● USCG Light

Depth in feet
 ■ Less than 3
 ■ 3 to 12
 ■ Greater than 12

0 250 500 1,000 1,500 Feet



Production Notes:
 1. The information depicted on this product is for plotting purposes only.
 2. Vector hydrographic data derived from surveys conducted by the USACE and approved partners.
 3. Soundings are in feet and refer to Mean Lower Low Water (MLLW).
 4. Raster Background: ArcGIS Online Image Basemap dated 2010 - 2011.
 In no event shall the U.S. Army Corps of Engineers, Charleston District Office, Spatial Data Branch be liable for direct, indirect, incidental, consequential or special damages of any kind, including, but not limited to, loss of anticipated profits or benefits arising out of use of or reliance on the data.
 These data sets have been developed from the best available sources. Although efforts have been made to ensure that the datasets are accurate and reliable, errors and variable conditions originating from physical sources used to develop the data may be reflected in the data supplied.
This product is not intended to be used for navigation.
Mariners are encouraged to use all prudent safety measures.



2526000 2527000 2528000 2529000 2530000 2531000 2532000 2533000

79°16'30"W

79°16'0"W

79°15'30"W



33°13'00"N
508000
507000
506000
505000
33°12'30"N

33°13'00"N
508000
507000
506000
505000
33°12'30"N

2526000 2527000 2528000 2529000 2530000 2531000 2532000 2533000

79°16'30"W

79°16'0"W

79°15'30"W

SHEET
REFERENCE
NUMBER
C003
Page 5 of 48

**Atlantic Intercoastal Waterway (AIWW)
Channel Survey**
The information depicted on this map represents the results of surveys made on the dates indicated and can only be considered as indicating the general conditions existing at that time.
Concluded on: **04 NOV 2015**
Charleston, SC to Port Royal, SC

U.S. ARMY ENGINEER DISTRICT
CORPS OF ENGINEERS
CHARLESTON, SOUTH CAROLINA

SPATIAL DATA BRANCH
69A HAGOOD AVE
CHARLESTON, SC 29403
CESAC-GIS@USACE.ARMY.MIL

Designed By:
eHydro Software v3.8.2
Reviewed By:
M. BOLES
Reference Scale:
1 inch = 500 feet
Projection:
NAD 1983 StatePlane South Carolina FIPS 3900 Feet

Survey Date:
dd MMM yyyy
20 NOV 2015
Project Reference Number:
CESAC-PRA-0001
Survey Type:
CONDITION

Shoalest Sounding
● Sounding
Sounding may cover several point areas and is calculated per reach quarter area
*+ indicates sounding above MLLW

USCG Beacon
■ Green
▲ Red
□ White

USCG Buoy
● Green
● Red
● Coast Guard Racon

○ White
○ Yellow
○ USCG Light

Depth in feet
■ Less than 3
■ 3 to 12
■ Greater than 12



Production Notes:
1. The information depicted on this product is for plotting purposes only.
2. Vector hydrographic data derived from surveys conducted by the USACE and approved partners.
3. Soundings are in feet and refer to Mean Lower Low Water (MLLW).
4. Raster Background: ArcGIS Online Image Basemap dated 2010 - 2011.

In no event shall the U.S. Army Corps of Engineers, Charleston District Office, Spatial Data Branch be liable for direct, indirect, incidental, consequential or special damages of any kind, including, but not limited to, loss of anticipated profits or benefits arising out of use of or reliance on the data.
These data sets have been developed from the best available sources. Although efforts have been made to ensure that the datasets are accurate and reliable, errors and variable conditions originating from physical sources used to develop the data may be reflected in the data supplied.
This product is not intended to be used for navigation.
Mariners are encouraged to use all prudent safety measures.





79°17'0"W
501000
502000
503000
504000
33°12'0"N

2526000
2527000
2528000
2529000
2530000
2531000
2532000
2533000
79°15'30"W

Atlantic Intercoastal Waterway (AIWW) Channel Survey
The information depicted on this map represents the results of surveys made on the dates indicated and can only be considered as indicating the general conditions existing at that time.
Concluded on: **04 NOV 2015**
Charleston, SC to Port Royal, SC

U.S. ARMY ENGINEER DISTRICT
CORPS OF ENGINEERS
CHARLESTON, SOUTH CAROLINA
SPATIAL DATA BRANCH
69A HAGOOD AVE
CHARLESTON, SC 29403
CESAC-GIS@USACE.ARMY.MIL

Designed By:
eHydro Software v3.82
Reviewed By:
M. BOLES
Reference Scale:
1 inch = 500 feet
Projection:
NAD 1983 StatePlane South Carolina FIPS 3900 Feet

Survey Date:
dd MMM yyyy
Project Reference Number:
CESAC-PRA-0001
Survey Type:
CONDITION
Production Date:
20 NOV 2015

Shoalest Sounding
● Sounding
Sounding may cover several point areas and is calculated per reach quarter area
*+ indicates sounding above MLLW

USCG Beacon
■ Green
▲ Red
□ White

USCG Buoy
● Green
● Red
● Coast Guard Racon

○ White
○ Yellow
○ USCG Light

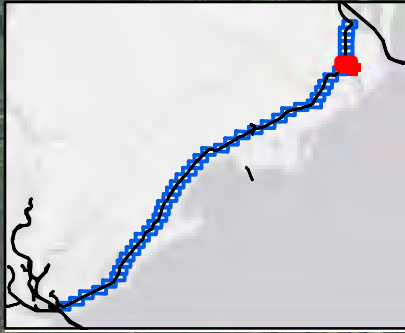
Depth in feet
■ Less than 3
■ 3 to 12
■ Greater than 12



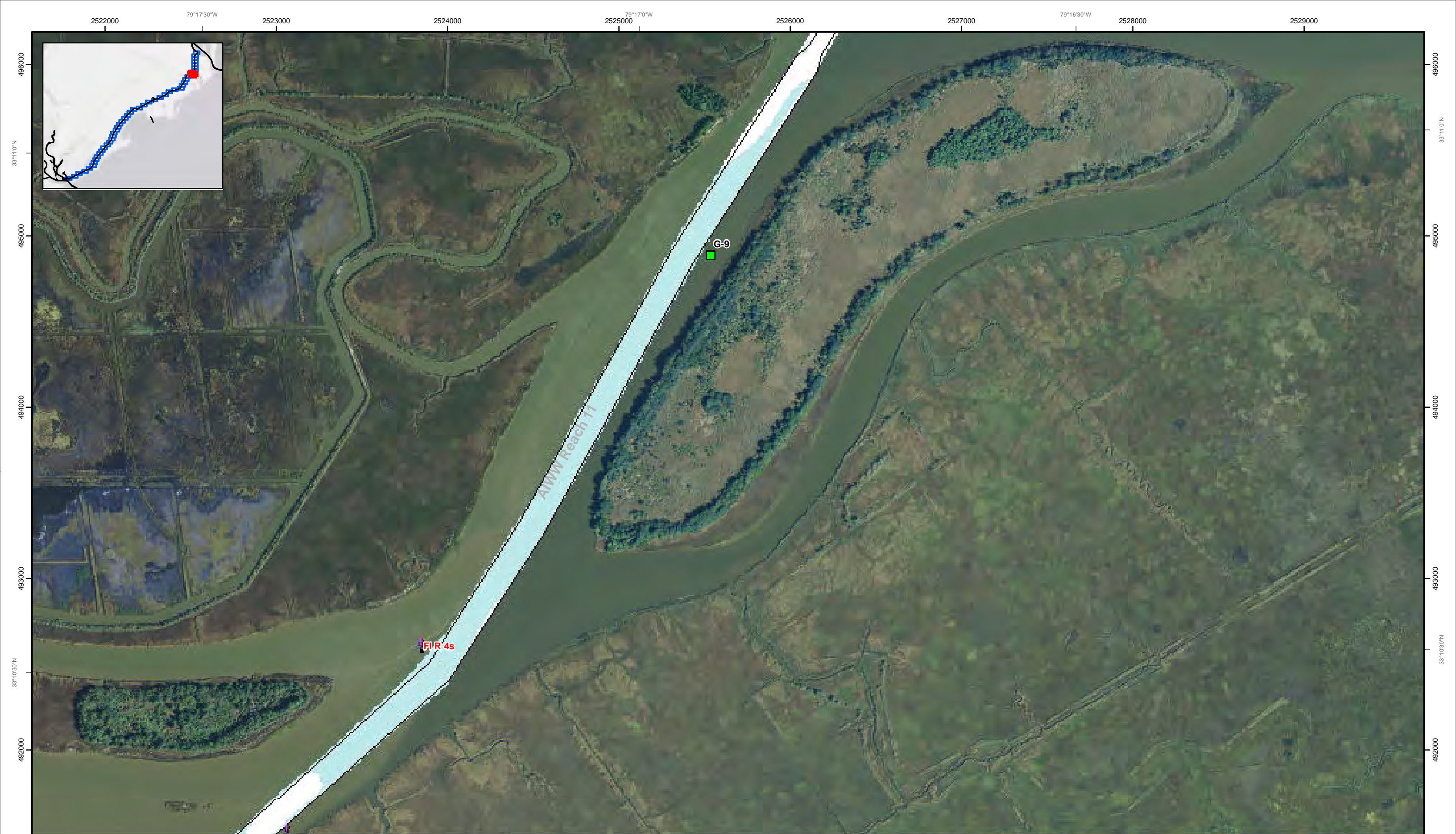
Production Notes:
1. The information depicted on this product is for plotting purposes only.
2. Vector hydrographic data derived from surveys conducted by the USACE and approved partners.
3. Soundings are in feet and refer to Mean Lower Low Water (MLLW).
4. Raster Background: ArcGIS Online Image Basemap dated 2010 - 2011.

In no event shall the U.S. Army Corps of Engineers, Charleston District Office, Spatial Data Branch be liable for direct, indirect, incidental, consequential or special damages of any kind, including, but not limited to, loss of anticipated profits or benefits arising out of use of or reliance on the data.
These data sets have been developed from the best available sources. Although efforts have been made to ensure that the datasets are accurate and reliable, errors and variable conditions originating from physical sources used to develop the data may be reflected in the data supplied.
This product is not intended to be used for navigation.
Mariners are encouraged to use all prudent safety measures.





SHEET REFERENCE NUMBER C003 Page 7 of 48	Atlantic Intercoastal Waterway (AIWW) Channel Survey The information depicted on this map represents the results of surveys made on the dates indicated and can only be considered as indicating the general conditions existing at that time. Concluded on: 04 NOV 2015 Charleston, SC to Port Royal, SC	U.S. ARMY ENGINEER DISTRICT CORPS OF ENGINEERS CHARLESTON, SOUTH CAROLINA SPATIAL DATA BRANCH 69A HAGOOD AVE CHARLESTON, SC 29403 CESAC-GIS@USACE.ARMY.MIL	Designed By: eHydro Software v3.82 Reviewed By: M. BOLES Reference Scale: 1 inch = 500 feet Projection: NAD 1983 StatePlane South Carolina FIPS 3900 Feet	Survey Date: dd MMM yyyy 20 NOV 2015 Project Reference Number: CESAC-PRA-0001 Survey Type: CONDITION	Shoalest Sounding ● Sounding <i>Sounding may cover several point areas and is calculated per reach quarter area</i> "+." indicates sounding above MLLW	USCG Beacon ■ Green ▲ Red □ White	USCG Buoy ● Green ● Red ● Coast Guard Racon	USCG Light ● White ● Yellow	Depth in feet ■ Less than 3 ■ 3 to 12 ■ Greater than 12	0 250 500 1,000 1,500 Feet		Production Notes: 1. The information depicted on this product is for plotting purposes only. 2. Vector hydrographic data derived from surveys conducted by the USACE and approved partners. 3. Soundings are in feet and refer to Mean Lower Low Water (MLLW). 4. Raster Background: ArcGIS Online Image Basemap dated 2010 - 2011. In no event shall the U.S. Army Corps of Engineers, Charleston District Office, Spatial Data Branch be liable for direct, indirect, incidental, consequential or special damages of any kind, including, but not limited to, loss of anticipated profits or benefits arising out of use of or reliance on the data. These data sets have been developed from the best available sources. Although efforts have been made to ensure that the datasets are accurate and reliable, errors and variable conditions originating from physical sources used to develop the data may be reflected in the data supplied. This product is not intended to be used for navigation. Mariners are encouraged to use all prudent safety measures.	 U.S. Army Corps of Engineers Charleston District
---	--	--	--	--	--	---	---	--	---	----------------------------	--	---	---



SHEET
REFERENCE
NUMBER
C003
Page 8 of 48

**Atlantic Intercoastal Waterway (AIWW)
Channel Survey**
The information depicted on this map represents the
results of surveys made on the dates indicated and
can only be considered as indicating the general
conditions existing at that time.
Concluded on: **04 NOV 2015**
Charleston, SC to Port Royal, SC

U.S. ARMY ENGINEER DISTRICT
CORPS OF ENGINEERS
CHARLESTON, SOUTH CAROLINA
SPATIAL DATA BRANCH
69A HAGOOD AVE
CHARLESTON, SC 29403
CESAC-GIS@USACE.ARMY.MIL

Designed By:
eHydro Software v3.82
Reviewed By:
M. BOLES
Reference Scale:
1 inch = 500 feet
Projection:
NAD 1983 StatePlane South Carolina FIPS 3900 Feet

Survey Date:
dd MMM yyyy
Project Reference Number:
CESAC-PRA-0001
Survey Type:
CONDITION
Production Date:
20 NOV 2015

Shoalest Sounding
● Sounding
Sounding may cover several
point areas and is calculated
per reach quarter area
"±" indicates sounding above MLLW

USCG Beacon
■ Green
▲ Red
□ White

USCG Buoy
● Green
● Red
● Coast Guard Racon

○ White
○ Yellow
○ USCG Light

Depth in feet
■ Less than 3
■ 3 to 12
■ Greater than 12



Production Notes:
1. The information depicted on this product is for plotting purposes only.
2. Vector hydrographic data derived from surveys conducted by the USACE and approved partners to Mean Lower Low Water (MLLW).
3. Soundings are in feet and refer to Mean Lower Low Water (MLLW).
4. Raster Background: ArcGIS Online Image Basemap dated 2010 - 2011.
This product is not intended to be used for navigation.
Mariners are encouraged to use all prudent safety measures.

In no event shall the U.S. Army Corps of Engineers, Charleston District Office, Spatial Data Branch be liable for direct, indirect, incidental, consequential or special damages of any kind, including, but not limited to, loss of anticipated profits or benefits arising out of use of or reliance on the data.
These data sets have been developed from the best available sources. Although efforts have been made to ensure that the datasets are accurate and reliable, errors and variable conditions originating from physical sources used to develop the data may be reflected in the data supplied.





SHEET
REFERENCE
NUMBER
C003
Page 6 of 46

**Atlantic Intercoastal Waterway (AIWW)
Channel Survey**
The information depicted on this map represents the
results of surveys made on the dates indicated and
can only be considered as indicating the general
conditions existing at that time.
Concluded on: **04 NOV 2015**
Charleston, SC to Port Royal, SC

U.S. ARMY ENGINEER DISTRICT
CORPS OF ENGINEERS
CHARLESTON, SOUTH CAROLINA
SPATIAL DATA BRANCH
69A HAGOOD AVE
CHARLESTON, SC 29403
CESAC-GIS@USACE.ARMY.MIL

Designed By: eHydro Software v3.82	Survey Date: dd MMM yyyy 20 NOV 2015	Production Date: 20 NOV 2015
Reviewed By: M. BOLES	Absolute Scale: 1:6,000	Project Reference Number: CESAC-PR-0001
Reference Scale: 1 inch = 500 feet	Survey Type: CONDITION	
Projection: NAD 1983 StatePlane South Carolina FIPS 3900 Feet		

Shoalest Sounding
● Sounding
Sounding may cover several
point areas and is calculated
per reach quarter area
"±" indicates sounding above MLLW

USCG Beacon
■ Green
▲ Red
□ White

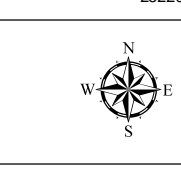
USCG Buoy
▲ Green
▲ Red
● Coast Guard Racon

○ White
○ Yellow
○ USCG Light

Depth in feet

Less than 3	3 to 12	Greater than 12
-------------	---------	-----------------

0 250 500 1,000 1,500 Feet



Production Notes:
1. The information depicted on this product is for plotting purposes only.
2. Vector hydrographic data derived from surveys conducted by the USACE and approved partners.
3. Soundings are in feet and refer to Mean Lower Low Water (MLLW).
4. Raster Background: ArcGIS Online Image Basemap dated 2010 - 2011.
In no event shall the U.S. Army Corps of Engineers, Charleston District Office, Spatial Data Branch be liable for direct, indirect, incidental, consequential or special damages of any kind, including, but not limited to, loss of anticipated profits or benefits arising out of use of or reliance on the data.
These data sets have been developed from the best available sources. Although efforts have been made to ensure that the datasets are accurate and reliable, errors and variable conditions originating from physical sources used to develop the data may be reflected in the data supplied.
This product is not intended to be used for navigation.
Mariners are encouraged to use all prudent safety measures.



79°19'30"W 2513000 2514000 2515000 2516000 2517000 2518000 2519000 2520000 79°18'0"W



79°19'30"W 2513000 2514000 2515000 2516000 2517000 2518000 2519000 2520000 79°18'0"W

Atlantic Intercoastal Waterway (AIWW) Channel Survey

The information depicted on this map represents the results of surveys made on the dates indicated and can only be considered as indicating the general conditions existing at that time.

Concluded on: **04 NOV 2015**

Charleston, SC to Port Royal, SC

U.S. ARMY ENGINEER DISTRICT
CORPS OF ENGINEERS
CHARLESTON, SOUTH CAROLINA

SPATIAL DATA BRANCH
69A HAGOOD AVE
CHARLESTON, SC 29403
CESAC-GIS@USACE.ARMY.MIL

Designed By: eHydro Software v3.82	Survey Date: dd MMM yyyy 20 NOV 2015	Production Date: 20 NOV 2015
Reviewed By: M. BOLES	Absolute Scale: 1:6,000	Project Reference Number: CESAC-PRA-0001
Reference Scale: 1 inch = 500 feet	Survey Type: CONDITION	
Projection: NAD 1983 StatePlane South Carolina FIPS 3900 Feet		

Shoalest Sounding

● Sounding

Sounding may cover several point areas and is calculated per reach quarter area

"+" indicates sounding above MLLW

USCG Beacon

■ Green

▲ Red

□ White

USCG Buoy

● Green

● Red

● Coast Guard Racon

● USCG Light

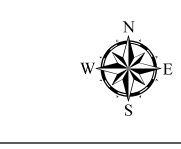
Depth in feet

■ Less than 3

■ 3 to 12

■ Greater than 12

0 250 500 1,000 1,500 Feet



Production Notes:

- The information depicted on this product is for plotting purposes only.
- Vector hydrographic data derived from surveys conducted by the USACE and approved partners.
- Soundings are in feet and refer to Mean Lower Low Water (MLLW).
- Raster Background: ArcGIS Online Image Basemap dated 2010 - 2011.

In no event shall the U.S. Army Corps of Engineers, Charleston District Office, Spatial Data Branch be liable for direct, indirect, incidental, consequential or special damages of any kind, including, but not limited to, loss of anticipated profits or benefits arising out of use of or reliance on the data.

These data sets have been developed from the best available sources. Although efforts have been made to ensure that the datasets are accurate and reliable, errors and variable conditions originating from physical sources used to develop the data may be reflected in the data supplied.

This product is not intended to be used for navigation.

Mariners are encouraged to use all prudent safety measures.



487000 486000 485000 484000 483000 33°9'30"N 33°9'00"N

487000 486000 485000 484000 483000 33°9'30"N 33°9'00"N

SHEET REFERENCE NUMBER C003 Page 10 of 46

2511000 2512000 2513000 2514000 2515000 2516000 2517000 2518000



2511000 2512000 2513000 2514000 2515000 2516000 2517000 2518000

SHEET
REFERENCE
NUMBER
C003
Page 11 of 46

Atlantic Intercoastal Waterway (AIWW) Channel Survey
The information depicted on this map represents the results of surveys made on the dates indicated and can only be considered as indicating the general conditions existing at that time.
Concluded on: **04 NOV 2015**
Charleston, SC to Port Royal, SC

U.S. ARMY ENGINEER DISTRICT
CORPS OF ENGINEERS
CHARLESTON, SOUTH CAROLINA
SPATIAL DATA BRANCH
69A HAGOOD AVE
CHARLESTON, SC 29403
CESAC-GIS@USACE.ARMY.MIL

Designed By: eHydro Software v3.82	Survey Date: dd MMM yyyy 20 NOV 2015	Production Date: 20 NOV 2015
Reviewed By: M. BOLES	Absolute Scale: 1:6,000	Project Reference Number: CESAC-PRA-0001
Reference Scale: 1 inch = 500 feet	Survey Type: CONDITION	
Projection: NAD 1983 StatePlane South Carolina FIPS 3900 Feet		

Shoalest Sounding
● Sounding
Sounding may cover several point areas and is calculated per reach quarter area
"±" indicates sounding above MLLW

USCG Beacon
■ Green
▲ Red
□ White

USCG Buoy
● Green
● Red
● Coast Guard Racon

○ White
○ Yellow
○ USCG Light

Depth in feet

■ Less than 3 ■ 3 to 12 ■ Greater than 12

0 250 500 1,000 1,500 Feet



Production Notes:

- The information depicted on this product is for plotting purposes only.
- Vector hydrographic data derived from surveys conducted by the USACE and approved partners.
- Soundings are in feet and refer to Mean Lower Low Water (MLLW).
- Raster Background: ArcGIS Online Image Basemap dated 2010 - 2011.

In no event shall the U.S. Army Corps of Engineers, Charleston District Office, Spatial Data Branch be liable for direct, indirect, incidental, consequential or special damages of any kind, including, but not limited to, loss of anticipated profits or benefits arising out of use of or reliance on the data.

These data sets have been developed from the best available sources. Although efforts have been made to ensure that the datasets are accurate and reliable, errors and variable conditions originating from physical sources used to develop the data may be reflected in the data supplied.

This product is not intended to be used for navigation. Mariners are encouraged to use all prudent safety measures.



79°20'30"W 2508000 2509000 2510000 2511000 2512000 2513000 2514000 2515000 79°19'0"W



79°20'30"W 2508000 2509000 2510000 2511000 2512000 2513000 2514000 2515000 79°19'0"W

SHEET
REFERENCE
NUMBER
C003
Page 12 of 46

**Atlantic Intercoastal Waterway (AIWW)
Channel Survey**
The information depicted on this map represents the results of surveys made on the dates indicated and can only be considered as indicating the general conditions existing at that time.
Concluded on: **04 NOV 2015**
Charleston, SC to Port Royal, SC

U.S. ARMY ENGINEER DISTRICT
CORPS OF ENGINEERS
CHARLESTON, SOUTH CAROLINA

SPATIAL DATA BRANCH
69A HAGOOD AVE
CHARLESTON, SC 29403
CESAC-GIS@USACE.ARMY.MIL

Designed By: eHydro Software v3.82	Survey Date: dd MMM yyyy 20 NOV 2015	Production Date: 20 NOV 2015
Reviewed By: M. BOLES	Absolute Scale: 1:6,000	Project Reference Number: CESAC-PRA-0001
Reference Scale: 1 inch = 500 feet	Survey Type: CONDITION	
Projection: NAD 1983 StatePlane South Carolina FIPS 3900 Feet		

Shoalest Sounding
● Sounding
Sounding may cover several point areas and is calculated per reach quarter area
"±" indicates sounding above MLLW

USCG Beacon
■ Green
▲ Red
□ White

USCG Buoy
● Green
● Red
● Coast Guard Racon

○ White
○ Yellow
○ USCG Light

Depth in feet

Less than 3	3 to 12	Greater than 12
-------------	---------	-----------------

0 250 500 1,000 1,500 Feet



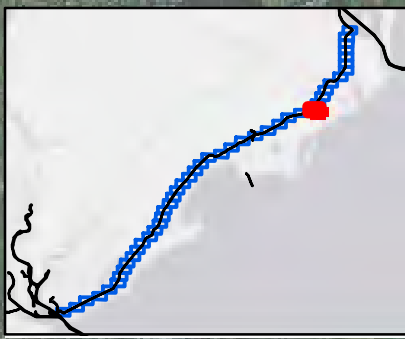
Production Notes:
1. The information depicted on this product is for plotting purposes only.
2. Vector hydrographic data derived from surveys conducted by the USACE and approved partners.
3. Soundings are in feet and refer to Mean Lower Low Water (MLLW).
4. Raster Background: ArcGIS Online Image Basemap dated 2010 - 2011.

In no event shall the U.S. Army Corps of Engineers, Charleston District Office, Spatial Data Branch be liable for direct, indirect, incidental, consequential or special damages of any kind, including, but not limited to, loss of anticipated profits or benefits arising out of use of or reliance on the data.
These data sets have been developed from the best available sources. Although efforts have been made to ensure that the datasets are accurate and reliable, errors and variable conditions originating from physical sources used to develop the data may be reflected in the data supplied.
This product is not intended to be used for navigation.
Mariners are encouraged to use all prudent safety measures.



2506000 2507000 2508000 2509000 2510000 2511000 2512000 2513000

2506000 2507000 2508000 2509000 2510000 2511000 2512000 2513000



33°17'30"N
474000

473000

472000

33°17'00"N
471000

33°17'30"N
474000

473000

472000

33°17'00"N
471000

SHEET
REFERENCE
NUMBER
C003
Page 13 of 46

**Atlantic Intercoastal Waterway (AIWW)
Channel Survey**
The information depicted on this map represents the results of surveys made on the dates indicated and can only be considered as indicating the general conditions existing at that time.
Concluded on: **04 NOV 2015**
Charleston, SC to Port Royal, SC

U.S. ARMY ENGINEER DISTRICT
CORPS OF ENGINEERS
CHARLESTON, SOUTH CAROLINA

SPATIAL DATA BRANCH
69A HAGOOD AVE
CHARLESTON, SC 29403
CESAC-GIS@USACE.ARMY.MIL

Designed By:
eHydro Software v3.82
Reviewed By:
M. BOLES
Reference Scale:
1 inch = 500 feet
Projection:
NAD 1983 StatePlane South Carolina FIPS 3900 Feet

Survey Date:
dd MMM yyyy
20 NOV 2015
Project Reference Number:
CESAC-PRA-0001
Survey Type:
CONDITION

Shoalest Sounding
Sounding may cover several point areas and is calculated per reach quarter area
"±" indicates sounding above MLLW

USCG Beacon
Green
White

USCG Buoy
Green
Red
Coast Guard Racon

White
Yellow
USCG Light

Depth in feet
Less than 3
3 to 12
Greater than 12



Production Notes:
1. The information depicted on this product is for plotting purposes only.
2. Vector hydrographic data derived from surveys conducted by the USACE and approved partners.
3. Soundings are in feet and refer to Mean Lower Low Water (MLLW).
4. Raster Background: ArcGIS Online Image Basemap dated 2010 - 2011.

In no event shall the U.S. Army Corps of Engineers, Charleston District Office, Spatial Data Branch be liable for direct, indirect, incidental, consequential or special damages of any kind, including, but not limited to, loss of anticipated profits or benefits arising out of use of or reliance on the data.
These data sets have been developed from the best available sources. Although efforts have been made to ensure that the datasets are accurate and reliable, errors and variable conditions originating from physical sources used to develop the data may be reflected in the data supplied.
This product is not intended to be used for navigation.
Mariners are encouraged to use all prudent safety measures.



79°22'30"W 2498000 2499000 2500000 2501000 2502000 2503000 2504000 2505000 79°21'0"W



472000
471000
470000
469000

472000
471000
470000
469000

79°22'30"W 2498000 2499000 2500000 2501000 2502000 2503000 2504000 2505000 79°21'30"W

SHEET
REFERENCE
NUMBER
C003
Page 14 of 46

**Atlantic Intercoastal Waterway (AIWW)
Channel Survey**
The information depicted on this map represents the results of surveys made on the dates indicated and can only be considered as indicating the general conditions existing at that time.
Concluded on: **04 NOV 2015**
Charleston, SC to Port Royal, SC

U.S. ARMY ENGINEER DISTRICT
CORPS OF ENGINEERS
CHARLESTON, SOUTH CAROLINA

SPATIAL DATA BRANCH
69A HAGOOD AVE
CHARLESTON, SC 29403
CESAC-GIS@USACE.ARMY.MIL

Designed By:
eHydro Software v3.82
Reviewed By:
M. BOLES
Reference Scale:
1 inch = 500 feet
Projection:
NAD 1983 StatePlane South Carolina FIPS 3900 Feet

Survey Date:
dd MMM yyyy
20 NOV 2015
Project Reference Number:
CESAC-PRA-0001
Survey Type:
CONDITION

Shoalest Sounding
Sounding may cover several point areas and is calculated per reach quarter area
"+" indicates sounding above MLLW

USCG Beacon
Green
White

USCG Buoy
Green
Red
Coast Guard Racon

USCG Light
White
Yellow

Depth in feet
Less than 3
3 to 12
Greater than 12

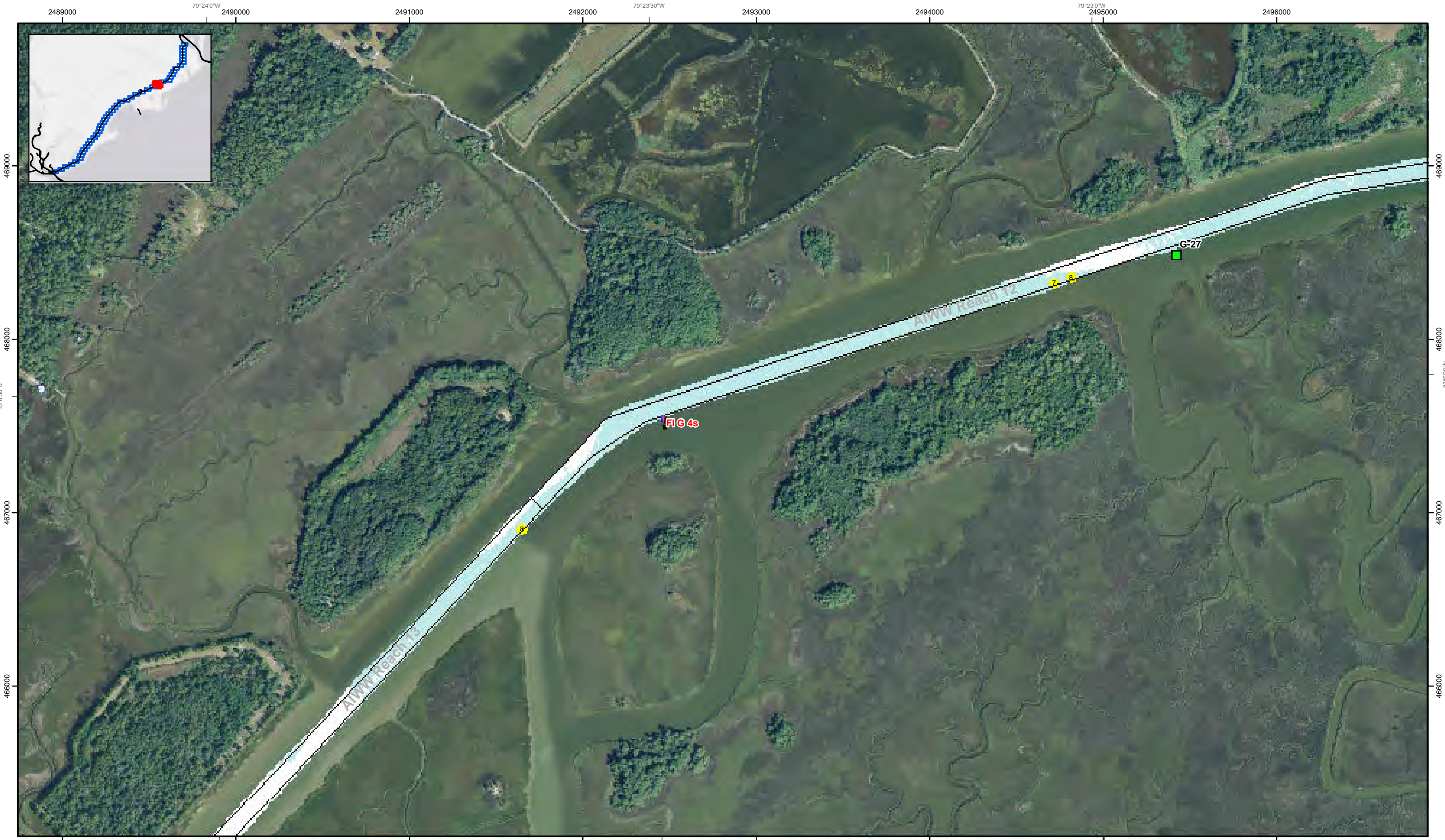
0 250 500 1,000 1,500 Feet



Production Notes:
1. The information depicted on this product is for plotting purposes only.
2. Vector hydrographic data derived from surveys conducted by the USACE and approved partners.
3. Soundings are in feet and refer to Mean Lower Low Water (MLLW).
4. Raster Background: ArcGIS Online Image Basemap dated 2010 - 2011.

In no event shall the U.S. Army Corps of Engineers, Charleston District Office, Spatial Data Branch be liable for direct, indirect, incidental, consequential or special damages of any kind, including, but not limited to, loss of anticipated profits or benefits arising out of use of or reliance on the data.
These data sets have been developed from the best available sources. Although efforts have been made to ensure that the datasets are accurate and reliable, errors and variable conditions originating from physical sources used to develop the data may be reflected in the data supplied.
This product is not intended to be used for navigation.
Mariners are encouraged to use all prudent safety measures.





SHEET REFERENCE NUMBER
C003
 Page 15 of 46

Atlantic Intercoastal Waterway (AIWW) Channel Survey
 The information depicted on this map represents the results of surveys made on the dates indicated and can only be considered as indicating the general conditions existing at that time.
 Concluded on: **04 NOV 2015**
 Charleston, SC to Port Royal, SC

U.S. ARMY ENGINEER DISTRICT CORPS OF ENGINEERS CHARLESTON, SOUTH CAROLINA SPATIAL DATA BRANCH 69A HAGOOD AVE CHARLESTON, SC 29403 CESAC-GIS@USACE.ARMY.MIL	Designed By: eHydro Software v3.82 Reviewed By: M. BOLES Reference Scale: 1 inch = 500 feet Projection: NAD 1983 StatePlane South Carolina FIPS 3900 Feet	Survey Date: dd MMM yyyy 20 NOV 2015 Project Reference Number: CESAC-PRA-0001 Survey Type: CONDITION	Production Date: 20 NOV 2015
--	--	--	--

Shoalest Sounding

Sounding
Sounding may cover several point areas and is calculated per reach quarter area
 "+" indicates sounding above MLLW

USCG Beacon

Green
 Red
 White

USCG Buoy

Green
 Red
 Coast Guard Racon

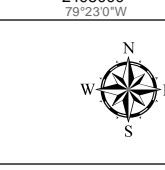
White

White
 Yellow
 USCG Light

Depth in feet

Less than 3
 3 to 12
 Greater than 12

0 250 500 1,000 1,500 Feet



Production Notes:

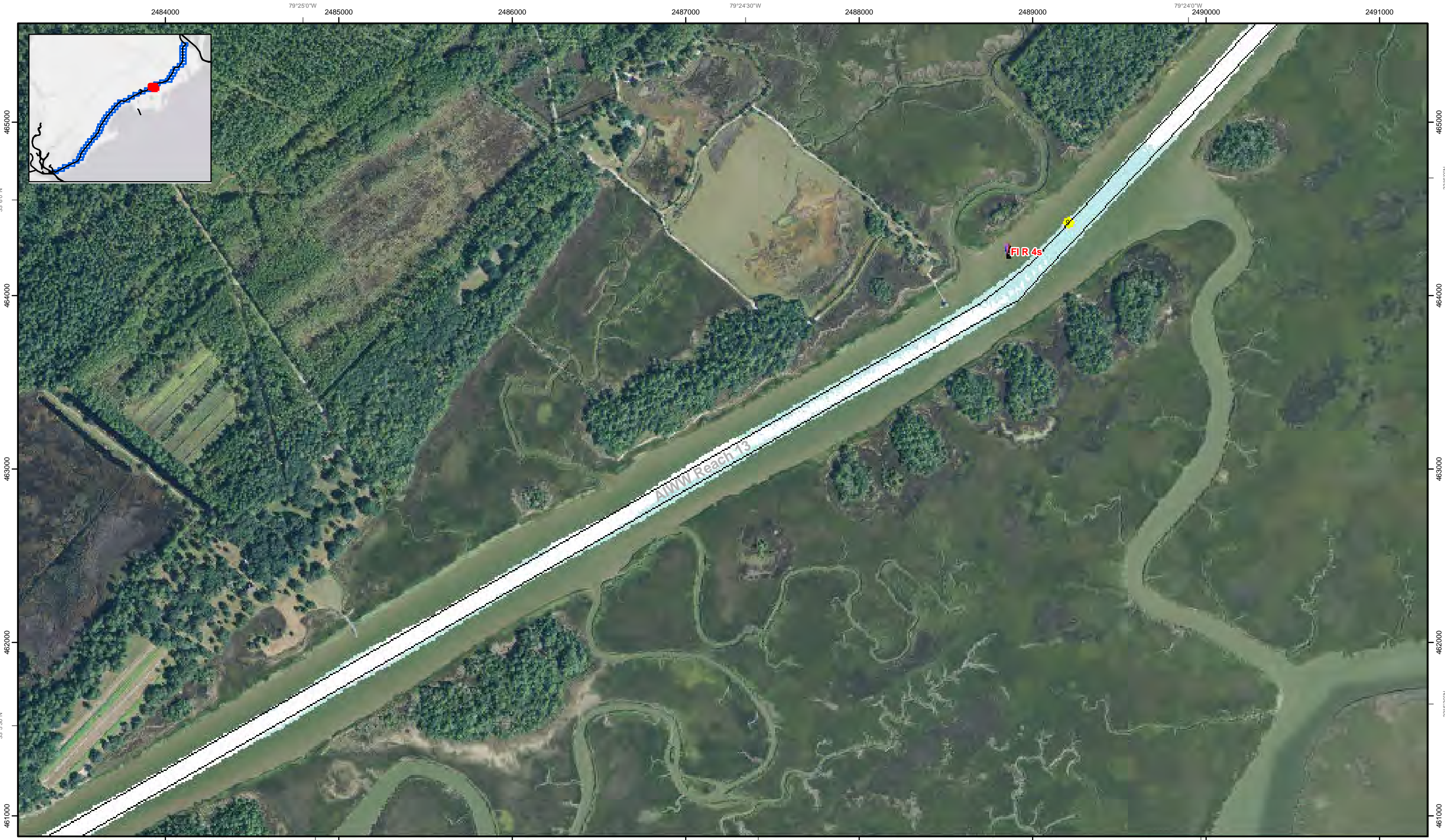
- The information depicted on this product is for plotting purposes only.
- Vector hydrographic data derived from surveys conducted by the USACE and approved partners.
- Soundings are in feet and refer to Mean Lower Low Water (MLLW).
- Raster Background: ArcGIS Online Image Basemap dated 2010 - 2011.

In no event shall the U.S. Army Corps of Engineers, Charleston District Office, Spatial Data Branch be liable for direct, indirect, incidental, consequential or special damages of any kind, including, but not limited to, loss of anticipated profits or benefits arising out of use of or reliance on the data.

These data sets have been developed from the best available sources. Although efforts have been made to ensure that the datasets are accurate and reliable, errors and variable conditions originating from physical sources used to develop the data may be reflected in the data supplied.

This product is not intended to be used for navigation.
Mariners are encouraged to use all prudent safety measures.





SHEET REFERENCE NUMBER
C003
Page 16 of 46

Atlantic Intercoastal Waterway (AIWW) Channel Survey
The information depicted on this map represents the results of surveys made on the dates indicated and can only be considered as indicating the general conditions existing at that time.
Concluded on: **04 NOV 2015**
Charleston, SC to Port Royal, SC

U.S. ARMY ENGINEER DISTRICT CORPS OF ENGINEERS CHARLESTON, SOUTH CAROLINA	Designed By: eHydro Software v3.82	Survey Date: dd MMM yyyy 20 NOV 2015	Production Date: 20 NOV 2015
SPATIAL DATA BRANCH 69A HAGOOD AVE CHARLESTON, SC 29403 CESAC-GIS@USACE.ARMY.MIL	Reviewed By: M. BOLES	Project Reference Number: CESAC-PRA-0001	
	Reference Scale: 1 inch = 500 feet	Survey Type: CONDITION	
	Projection: NAD 1983 StatePlane South Carolina FIPS 3900 Feet		

Shoalest Sounding
Sounding may cover several point areas and is calculated per reach quarter area
"+ " indicates sounding above MLLW

USCG Beacon
Green
Red
White

USCG Buoy
Green
Red
Coast Guard Racon

USCG Light
White
Yellow

Depth in feet

Less than 3	3 to 12	Greater than 12
-------------	---------	-----------------

0 250 500 1,000 1,500 Feet

Production Notes:

- The information depicted on this product is for plotting purposes only
- Vector hydrographic data derived from surveys conducted by the USACE and approved partners
- Soundings are in feet and refer to Mean Lower Low Water (MLLW)
- Raster Background: ArcGIS Online Image Basemap dated 2010 - 2011

In no event shall the U.S. Army Corps of Engineers, Charleston District Office, Spatial Data Branch be liable for direct, indirect, incidental, consequential or special damages of any kind, including, but not limited to, loss of anticipated profits or benefits arising out of use of or reliance on the data.
These data sets have been developed from the best available sources. Although efforts have been made to ensure that the datasets are accurate and reliable, errors and variable conditions originating from physical sources used to develop the data may be reflected in the data supplied.
This product is not intended to be used for navigation.
Mariners are encouraged to use all prudent safety measures.



2477000 79°26'30"W 2478000 2479000 2480000 2481000 2482000 2483000 2484000



SHEET REFERENCE NUMBER
C003
Page 17 of 46

Atlantic Intercoastal Waterway (AIWW) Channel Survey
The information depicted on this map represents the results of surveys made on the dates indicated and can only be considered as indicating the general conditions existing at that time.
Concluded on: **04 NOV 2015**
Charleston, SC to Port Royal, SC

U.S. ARMY ENGINEER DISTRICT CORPS OF ENGINEERS CHARLESTON, SOUTH CAROLINA	Designed By: eHydro Software v3.82	Survey Date: dd MMM yyyy 20 NOV 2015	Production Date: 20 NOV 2015
SPATIAL DATA BRANCH 69A HAGOOD AVE CHARLESTON, SC 29403 CESAC-GIS@USACE.ARMY.MIL	Reviewed By: M. BOLES	Project Reference Number: CESAC-PRA-0001	
	Absolute Scale: 1:6,000	Survey Type: CONDITION	
	Reference Scale: 1 inch = 500 feet	Projection: NAD 1983 StatePlane South Carolina FIPS 3900 Feet	

Shoalest Sounding
Sounding may cover several point areas and is calculated per reach quarter area
"+" indicates sounding above MLLW

USCG Beacon
Green
Red

USCG Buoy
Green
Red
Coast Guard Racon

White
Yellow
USCG Light

Depth in feet

Less than 3 3 to 12 Greater than 12

0 250 500 1,000 1,500



Production Notes:

- The information depicted on this product is for plotting purposes only.
- Vector hydrographic data derived from surveys conducted by the USACE and approved partners.
- Soundings are in feet and refer to Mean Lower Low Water (MLLW).
- Raster Background: ArcGIS Online Image Basemap dated 2010 - 2011.

In no event shall the U.S. Army Corps of Engineers, Charleston District Office, Spatial Data Branch be liable for direct, indirect, incidental, consequential or special damages of any kind, including, but not limited to, loss of anticipated profits or benefits arising out of use of or reliance on the data.

These data sets have been developed from the best available sources. Although efforts have been made to ensure that the datasets are accurate and reliable, errors and variable conditions originating from physical sources used to develop the data may be reflected in the data supplied.

This product is not intended to be used for navigation. Mariners are encouraged to use all prudent safety measures.



467000 468000 469000 460000 461000

33°50'N

33°50'N

2477000 79°26'30"W 2478000 2479000 2480000 2481000 2482000 2483000 2484000

2468000 2469000 2470000 2471000 2472000 2473000 2474000 2475000



Atlantic Intercoastal Waterway (AIWW) Channel Survey
 The information depicted on this map represents the results of surveys made on the dates indicated and can only be considered as indicating the general conditions existing at that time.
 Concluded on: **04 NOV 2015**
 Charleston, SC to Port Royal, SC

U.S. ARMY ENGINEER DISTRICT
 CORPS OF ENGINEERS
 CHARLESTON, SOUTH CAROLINA
 SPATIAL DATA BRANCH
 69A HAGOOD AVE
 CHARLESTON, SC 29403
 CESAC-GIS@USACE.ARMY.MIL

Designed By: eHydro Software v3.82	Survey Date: dd MMM yyyy 20 NOV 2015	Production Date: dd MMM yyyy 20 NOV 2015
Reviewed By: M. BOLES	Absolute Scale: 1:6,000	Project Reference Number: CESAC-PRA-0001
Reference Scale: 1 inch = 500 feet	Survey Type: CONDITION	
Projection: NAD 1983 StatePlane South Carolina FIPS 3900 Feet		

Shoalest Sounding
 Sounding may cover several point areas and is calculated per reach quarter area
 "+" indicates sounding above MLLW

USCG Beacon
 Green
 Red
 White

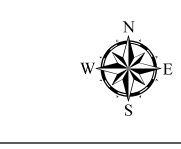
USCG Buoy
 Green
 Red
 Coast Guard Racon

USCG Light
 White
 Yellow

Depth in feet

Less than 3	3 to 12	Greater than 12
-------------	---------	-----------------

0 250 500 1,000 1,500 Feet



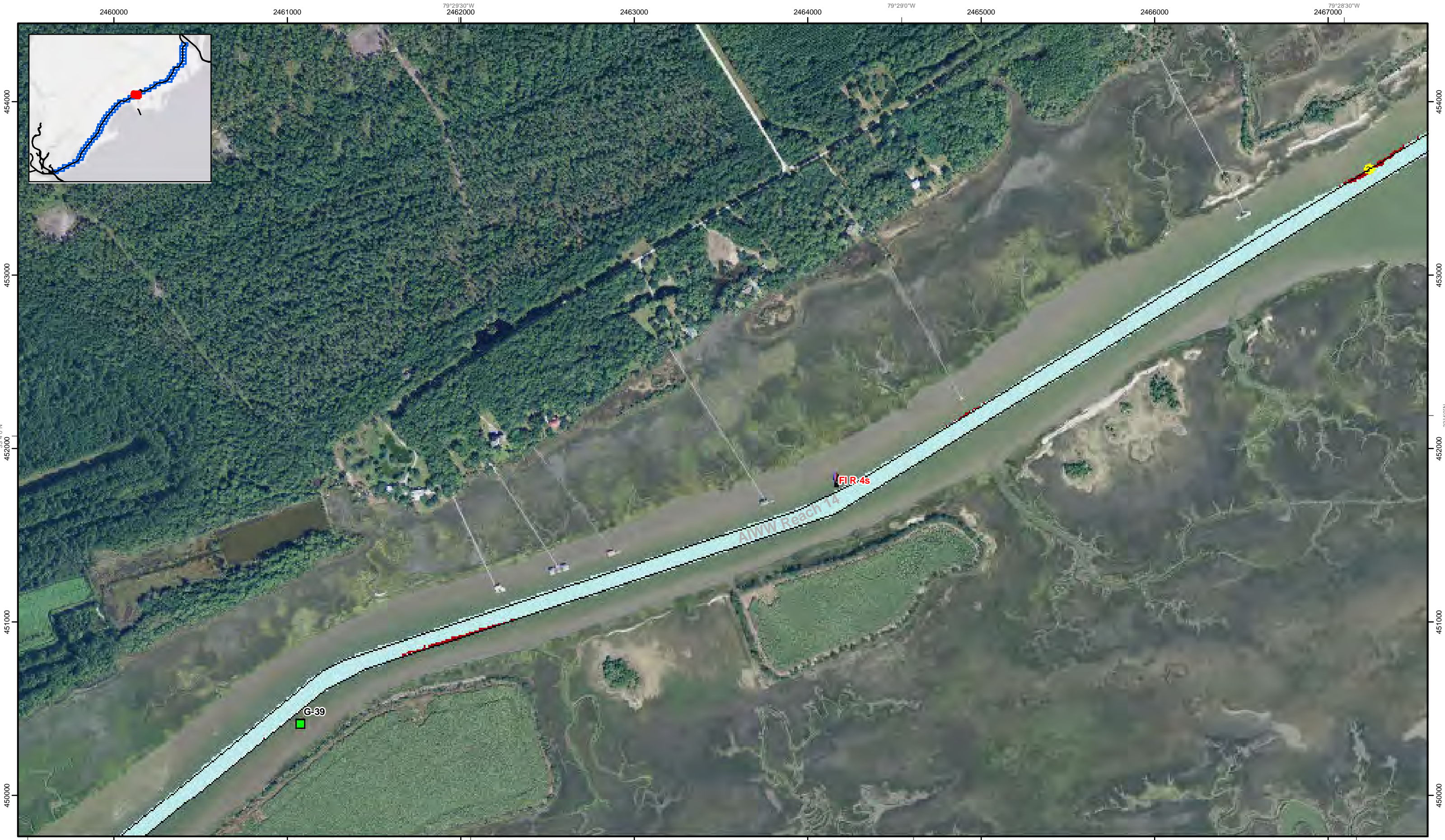
Production Notes:

- The information depicted on this product is for plotting purposes only.
- Vector hydrographic data derived from surveys conducted by the USACE and approved partners.
- Soundings are in feet and refer to Mean Lower Low Water (MLLW).
- Raster Background: ArcGIS Online Image Basemap dated 2010 - 2011.

In no event shall the U.S. Army Corps of Engineers, Charleston District Office, Spatial Data Branch be liable for direct, indirect, incidental, consequential or special damages of any kind, including, but not limited to, loss of anticipated profits or benefits arising out of use of or reliance on the data.
 These data sets have been developed from the best available sources. Although efforts have been made to ensure that the datasets are accurate and reliable, errors and variable conditions originating from physical sources used to develop the data may be reflected in the data supplied.
This product is not intended to be used for navigation.
 Mariners are encouraged to use all prudent safety measures.



SHEET REFERENCE NUMBER
C003
 Page 18 of 46



79°30'0"W 2460000 2461000 2462000 2463000 2464000 2465000 2466000 2467000 79°28'30"W

454000 453000 452000 451000 450000

33°4'0"N 33°4'0"N

Atlantic Intercoastal Waterway (AIWW) Channel Survey

The information depicted on this map represents the results of surveys made on the dates indicated and can only be considered as indicating the general conditions existing at that time.

Concluded on: **04 NOV 2015**

Charleston, SC to Port Royal, SC

SHEET REFERENCE NUMBER C003 Page 19 of 46

U.S. ARMY ENGINEER DISTRICT CORPS OF ENGINEERS CHARLESTON, SOUTH CAROLINA	Designed By: eHydro Software v3.82	Survey Date: dd MMM yyyy 20 NOV 2015	Production Date: 20 NOV 2015
SPATIAL DATA BRANCH 69A HAGOOD AVE CHARLESTON, SC 29403 CESAC-GIS@USACE.ARMY.MIL	Reviewed By: M. BOLES	Project Reference Number: CESAC-PRA-0001	
	Absolute Scale: 1:6,000	Survey Type: CONDITION	
	Reference Scale: 1 inch = 500 feet	Projection: NAD 1983 StatePlane South Carolina FIPS 3900 Feet	

Shoalest Sounding

● Sounding

Sounding may cover several point areas and is calculated per reach quarter area

"+" indicates sounding above MLLW

USCG Beacon

■ Green

▲ Red

□ White

USCG Buoy

● Green

● Red

● Coast Guard Racon

○ White

○ Yellow

○ USCG Light

Depth in feet

■ Less than 3

■ 3 to 12

■ Greater than 12

0 250 500 1,000 1,500 Feet

Production Notes:

- The information depicted on this product is for plotting purposes only.
- Vector hydrographic data derived from surveys conducted by the USACE and approved partners.
- Soundings are in feet and refer to Mean Lower Low Water (MLLW).
- Raster Background: ArcGIS Online Image Basemap dated 2010 - 2011.

In no event shall the U.S. Army Corps of Engineers, Charleston District Office, Spatial Data Branch be liable for direct, indirect, incidental, consequential or special damages of any kind, including, but not limited to, loss of anticipated profits or benefits arising out of use of or reliance on the data.

These data sets have been developed from the best available sources. Although efforts have been made to ensure that the datasets are accurate and reliable, errors and variable conditions originating from physical sources used to develop the data may be reflected in the data supplied.

This product is not intended to be used for navigation.

Mariners are encouraged to use all prudent safety measures.

U.S. Army Corps of Engineers
Charleston District



SHEET
REFERENCE
NUMBER
C003
Page 20 of 46

**Atlantic Intercoastal Waterway (AIWW)
Channel Survey**
The information depicted on this map represents the
results of surveys made on the dates indicated and
can only be considered as indicating the general
conditions existing at that time.
Concluded on: **04 NOV 2015**
Charleston, SC to Port Royal, SC

U.S. ARMY ENGINEER DISTRICT
CORPS OF ENGINEERS
CHARLESTON, SOUTH CAROLINA
SPATIAL DATA BRANCH
69A HAGOOD AVE
CHARLESTON, SC 29403
CESAC-GIS@USACE.ARMY.MIL

Designed By: eHydro Software v3.82	Survey Date: dd MMM yyyy	Production Date: 20 NOV 2015
Reviewed By: M. BOLES	Absolute Scale: 1:6,000	Project Reference Number: CESAC-PRA-0001
Reference Scale: 1 inch = 500 feet	Survey Type: CONDITION	
Projection: NAD 1983 StatePlane South Carolina FIPS 3900 Feet		

Shoalest Sounding
Sounding may cover several point areas and is calculated per reach quarter area
"+" indicates sounding above MLLW

Sounding	USCG Beacon Green	USCG Buoy Green	White	Depth in feet Less than 3
Sounding above MLLW	USCG Beacon Red	USCG Buoy Red	Yellow	Depth in feet 3 to 12
	Coast Guard Racon	USCG Light		Depth in feet Greater than 12

0 250 500 1,000 1,500 Feet

Production Notes:

- The information depicted on this product is for plotting purposes only.
- Vector hydrographic data derived from surveys conducted by the USACE and approved partners.
- Soundings are in feet and refer to Mean Lower Low Water (MLLW).
- Raster Background: ArcGIS Online Image Basemap dated 2010 - 2011.

In no event shall the U.S. Army Corps of Engineers, Charleston District Office, Spatial Data Branch be liable for direct, indirect, incidental, consequential or special damages of any kind, including, but not limited to, loss of anticipated profits or benefits arising out of use of or reliance on the data. These data sets have been developed from the best available sources. Although efforts have been made to ensure that the datasets are accurate and reliable, errors and variable conditions originating from physical sources used to develop the data may be reflected in the data supplied. This product is not intended to be used for navigation. Mariners are encouraged to use all prudent safety measures.





SHEET
REFERENCE
NUMBER
C003
Page 12 of 46

**Atlantic Intercoastal Waterway (AIWW)
Channel Survey**
The information depicted on this map represents the results of surveys made on the dates indicated and can only be considered as indicating the general conditions existing at that time.
Concluded on: **04 NOV 2015**
Charleston, SC to Port Royal, SC

U.S. ARMY ENGINEER DISTRICT
CORPS OF ENGINEERS
CHARLESTON, SOUTH CAROLINA

SPATIAL DATA BRANCH
69A HAGOOD AVE
CHARLESTON, SC 29403
CESAC-GIS@USACE.ARMY.MIL

Designed By:
eHydro Software v3.82
Reviewed By:
M. BOLES
Reference Scale:
1 inch = 500 feet
Projection:
NAD 1983 StatePlane South Carolina FIPS 3900 Feet

Survey Date:
dd MMM yyyy
Production Date:
20 NOV 2015
Project Reference Number:
CESAC-PRA-0001
Survey Type:
CONDITION

Shoalest Sounding
● Sounding
Sounding may cover several point areas and is calculated per reach quarter area
*+ indicates sounding above MLLW

USCG Beacon
■ Green
▲ Red
□ White

USCG Buoy
● Green
● Red
● Coast Guard Racon

○ White
○ Yellow
○ USCG Light

Depth in feet
■ Less than 3
■ 3 to 12
■ Greater than 12
0 250 500 1,000 1,500 Feet



Production Notes:
1. The information depicted on this product is for plotting purposes only.
2. Vector hydrographic data derived from surveys conducted by the USACE and approved partners to Mean Lower Low Water (MLLW).
3. Soundings are in feet and refer to Mean Lower Low Water (MLLW).
4. Raster Background: ArcGIS Online Image Basemap dated 2010 - 2011.

In no event shall the U.S. Army Corps of Engineers, Charleston District Office, Spatial Data Branch be liable for direct, indirect, incidental, consequential or special damages of any kind, including, but not limited to, loss of anticipated profits or benefits arising out of use of or reliance on the data.
These data sets have been developed from the best available sources. Although efforts have been made to ensure that the datasets are accurate and reliable, errors and variable conditions originating from physical sources used to develop the data may be reflected in the data supplied.
This product is not intended to be used for navigation.
Mariners are encouraged to use all prudent safety measures.



2439000 79°34'0"W 2440000 2441000 2442000 79°33'30"W 2443000 2444000 79°33'0"W 2445000 2446000



443000
442000
441000
440000
439000

443000
442000
441000
440000
439000

33°2'30"N
33°2'00"N
33°1'30"N

33°2'30"N
33°2'00"N
33°1'30"N

2439000 79°34'0"W 2440000 2441000 2442000 79°33'30"W 2443000 2444000 79°33'0"W 2445000 2446000

SHEET
REFERENCE
NUMBER
C003
Page 22 of 46

**Atlantic Intercoastal Waterway (AIWW)
Channel Survey**
The information depicted on this map represents the results of surveys made on the dates indicated and can only be considered as indicating the general conditions existing at that time.
Concluded on: **04 NOV 2015**
Charleston, SC to Port Royal, SC

U.S. ARMY ENGINEER DISTRICT
CORPS OF ENGINEERS
CHARLESTON, SOUTH CAROLINA
SPATIAL DATA BRANCH
69A HAGOOD AVE
CHARLESTON, SC 29403
CESAC-GIS@USACE.ARMY.MIL

Designed By:
eHydro Software v3.82
Reviewed By:
M. BOLES
Reference Scale:
1 inch = 500 feet
Projection:
NAD 1983 StatePlane South Carolina FIPS 3900 Feet

Survey Date:
dd MMM yyyy
Project Reference Number:
CESAC-PRA-0001
Survey Type:
CONDITION

Shoalest Sounding
● Sounding
Sounding may cover several point areas and is calculated per reach quarter area
*+ indicates sounding above MLLW

USCG Beacon
■ Green
▲ Red
□ White

USCG Buoy
● Green
● Red
● Coast Guard Racon

○ White
○ Yellow
○ USCG Light

Depth in feet
■ Less than 3
■ 3 to 12
■ Greater than 12



Production Notes:
1. The information depicted on this product is for plotting purposes only.
2. Vector hydrographic data derived from surveys conducted by the USACE and approved partners.
3. Soundings are in feet and refer to Mean Lower Low Water (MLLW).
4. Raster Background: ArcGIS Online Image Basemap dated 2010 - 2011.

In no event shall the U.S. Army Corps of Engineers, Charleston District Office, Spatial Data Branch be liable for direct, indirect, incidental, consequential or special damages of any kind, including, but not limited to, loss of anticipated profits or benefits arising out of use of or reliance on the data.
These data sets have been developed from the best available sources. Although efforts have been made to ensure that the datasets are accurate and reliable, errors and variable conditions originating from physical sources used to develop the data may be reflected in the data supplied.
This product is not intended to be used for navigation.
Mariners are encouraged to use all prudent safety measures.





SHEET REFERENCE NUMBER
C003
Page 23 of 46

Atlantic Intercoastal Waterway (AIWW) Channel Survey
The information depicted on this map represents the results of surveys made on the dates indicated and can only be considered as indicating the general conditions existing at that time.
Concluded on: **04 NOV 2015**
Charleston, SC to Port Royal, SC

U.S. ARMY ENGINEER DISTRICT
CORPS OF ENGINEERS
CHARLESTON, SOUTH CAROLINA

SPATIAL DATA BRANCH
69A HAGOOD AVE
CHARLESTON, SC 29403
CESAC-GIS@USACE.ARMY.MIL

Designed By: eHydro Software v3.82
Reviewed By: M. BOLES
Reference Scale: 1 inch = 500 feet
Projection: NAD 1983 StatePlane South Carolina FIPS 3900 Feet

Survey Date: dd MMM yyyy
Production Date: 20 NOV 2015
Project Reference Number: CESAC-PRA-0001
Survey Type: CONDITION

Shoalest Sounding
Sounding may cover several point areas and is calculated per reach quarter area
"+ " indicates sounding above MLLW

USCG Beacon
Green
Red
White

USCG Buoy
Green
Red
Coast Guard Racon

White
Yellow
USCG Light

Depth in feet

Less than 3
3 to 12
Greater than 12

0 250 500 1,000 1,500 Feet



Production Notes:
1. The information depicted on this product is for plotting purposes only
2. Vector hydrographic data derived from surveys conducted by the USACE and approved partners
3. Soundings are in feet and refer to Mean Lower Low Water (MLLW)
4. Raster Background: ArcGIS Online Image Basemap dated 2010 - 2011

In no event shall the U.S. Army Corps of Engineers, Charleston District Office, Spatial Data Branch be liable for direct, indirect, incidental, consequential or special damages of any kind, including, but not limited to, loss of anticipated profits or benefits arising out of use of or reliance on the data.
These data sets have been developed from the best available sources. Although efforts have been made to ensure that the datasets are accurate and reliable, errors and variable conditions originating from physical sources used to develop the data may be reflected in the data supplied.
This product is not intended to be used for navigation.
Mariners are encouraged to use all prudent safety measures.





SHEET REFERENCE NUMBER
C003
 Page 24 of 46

Atlantic Intercoastal Waterway (AIWW) Channel Survey
 The information depicted on this map represents the results of surveys made on the dates indicated and can only be considered as indicating the general conditions existing at that time.
 Concluded on: **04 NOV 2015**
 Charleston, SC to Port Royal, SC

U.S. ARMY ENGINEER DISTRICT CORPS OF ENGINEERS CHARLESTON, SOUTH CAROLINA SPATIAL DATA BRANCH 69A HAGOOD AVE CHARLESTON, SC 29403 CESAC-GIS@USACE.ARMY.MIL	Designed By: eHydro Software v3.82 Reviewed By: M. BOLES Reference Scale: 1 inch = 500 feet Projection: NAD 1983 StatePlane South Carolina FIPS 3900 Feet	Survey Date: dd MMM yyyy 20 NOV 2015 Project Reference Number: CESAC-PRA-0001 Survey Type: CONDITION	Production Date: 20 NOV 2015 Absolute Scale: 1:6,000
--	--	--	---

Shoalest Sounding

● Sounding
Sounding may cover several point areas and is calculated per reach quarter area
 *+ indicates sounding above MLLW

USCG Beacon
 ● Green
 ▲ White

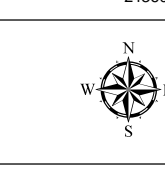
USCG Buoy
 ● Green
 ● Red
 ● Coast Guard Racon

USCG Light
 ● White
 ● Yellow

Depth in feet

■ Less than 3
 ■ 3 to 12
 ■ Greater than 12

0 250 500 1,000 1,500 Feet



Production Notes:

- The information depicted on this product is for plotting purposes only.
- Vector hydrographic data derived from surveys conducted by the USACE and approved partners.
- Soundings are in feet and refer to Mean Lower Low Water (MLLW).
- Raster Background: ArcGIS Online Image Basemap dated 2010 - 2011.

In no event shall the U.S. Army Corps of Engineers, Charleston District Office, Spatial Data Branch be liable for direct, indirect, incidental, consequential or special damages of any kind, including, but not limited to, loss of anticipated profits or benefits arising out of use of or reliance on the data.
 These data sets have been developed from the best available sources. Although efforts have been made to ensure that the datasets are accurate and reliable, errors and variable conditions originating from physical sources used to develop the data may be reflected in the data supplied.
This product is not intended to be used for navigation.
Mariners are encouraged to use all prudent safety measures.





Atlantic Intercoastal Waterway (AIWW) Channel Survey
 The information depicted on this map represents the results of surveys made on the dates indicated and can only be considered as indicating the general conditions existing at that time.
 Concluded on: **04 NOV 2015**
 Charleston, SC to Port Royal, SC

U.S. ARMY ENGINEER DISTRICT CORPS OF ENGINEERS CHARLESTON, SOUTH CAROLINA	Designed By: eHydro Software v3.82	Survey Date: dd MMM yyyy 20 NOV 2015	Production Date: 20 NOV 2015
SPATIAL DATA BRANCH 69A HAGOOD AVE CHARLESTON, SC 29403 CESAC-GIS@USACE.ARMY.MIL	Reviewed By: M. BOLES	Project Reference Number: CESAC-PRA-0001	
	Reference Scale: 1 inch = 500 feet	Survey Type: CONDITION	
	Projection: NAD 1983 StatePlane South Carolina FIPS 3900 Feet		

Shoalest Sounding
 ● Sounding
Sounding may cover several point areas and is calculated per reach quarter area
 *+ indicates sounding above MLLW

USCG Beacon
 ■ Green
 ▲ Red
 □ White

USCG Buoy
 ● Green
 ● Red
 ● Coast Guard Racon

USCG Light
 ○ White
 ○ Yellow

Depth in feet

■ Less than 3 ■ 3 to 12 ■ Greater than 12

0 250 500 1,000 1,500 Feet

Production Notes:

- The information depicted on this product is for plotting purposes only.
- Vector hydrographic data derived from surveys conducted by the USACE and approved partners.
- Soundings are in feet and refer to Mean Lower Low Water (MLLW).
- Raster Background: ArcGIS Online Image Basemap dated 2010 - 2011.

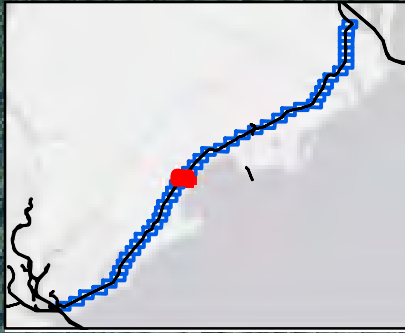
In no event shall the U.S. Army Corps of Engineers, Charleston District Office, Spatial Data Branch be liable for direct, indirect, incidental, consequential or special damages of any kind, including, but not limited to, loss of anticipated profits or benefits arising out of use of or reliance on the data.

These data sets have been developed from the best available sources. Although efforts have been made to ensure that the datasets are accurate and reliable, errors and variable conditions originating from physical sources used to develop the data may be reflected in the data supplied.

This product is not intended to be used for navigation.
 Mariners are encouraged to use all prudent safety measures.

U.S. Army Corps of Engineers
 Charleston District

SHEET
 REFERENCE
 NUMBER
C003
 Page 25 of 46



2422000 2423000 2424000 2425000 2426000 2427000 2428000 2429000

79°37'0"W 79°36'30"W 79°36'0"W

426000 425000 424000 423000 422000

32°59'30"N 32°59'00"N

Atlantic Intercoastal Waterway (AIWW) Channel Survey
 The information depicted on this map represents the results of surveys made on the dates indicated and can only be considered as indicating the general conditions existing at that time.
 Concluded on: **04 NOV 2015**
 Charleston, SC to Port Royal, SC

U.S. ARMY ENGINEER DISTRICT
 CORPS OF ENGINEERS
 CHARLESTON, SOUTH CAROLINA
 SPATIAL DATA BRANCH
 69A HAGOOD AVE
 CHARLESTON, SC 29403
 CESAC-GIS@USACE.ARMY.MIL

Designed By: eHydro Software v3.82	Survey Date: dd MMM yyyy 20 NOV 2015	Production Date: 20 NOV 2015
Reviewed By: M. BOLES	Absolute Scale: 1:6,000	Project Reference Number: CESAC-PRA-0001
Reference Scale: 1 inch = 500 feet	Survey Type: CONDITION	
Projection: NAD 1983 StatePlane South Carolina FIPS 3900 Feet		

Shoalest Sounding
 Sounding may cover several point areas and is calculated per reach quarter area
 "+" indicates sounding above MLLW

USCG Beacon
 Green
 Red
 White

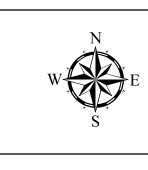
USCG Buoy
 Green
 Red
 Coast Guard Racon

USCG Light
 White
 Yellow

Depth in feet

Less than 3	3 to 12	Greater than 12
-------------	---------	-----------------

0 250 500 1,000 1,500 Feet



Production Notes:

- The information depicted on this product is for plotting purposes only.
- Vector hydrographic data derived from surveys conducted by the USACE and approved partners.
- Soundings are in feet and refer to Mean Lower Low Water (MLLW).
- Raster Background: ArcGIS Online Image Basemap dated 2010 - 2011.

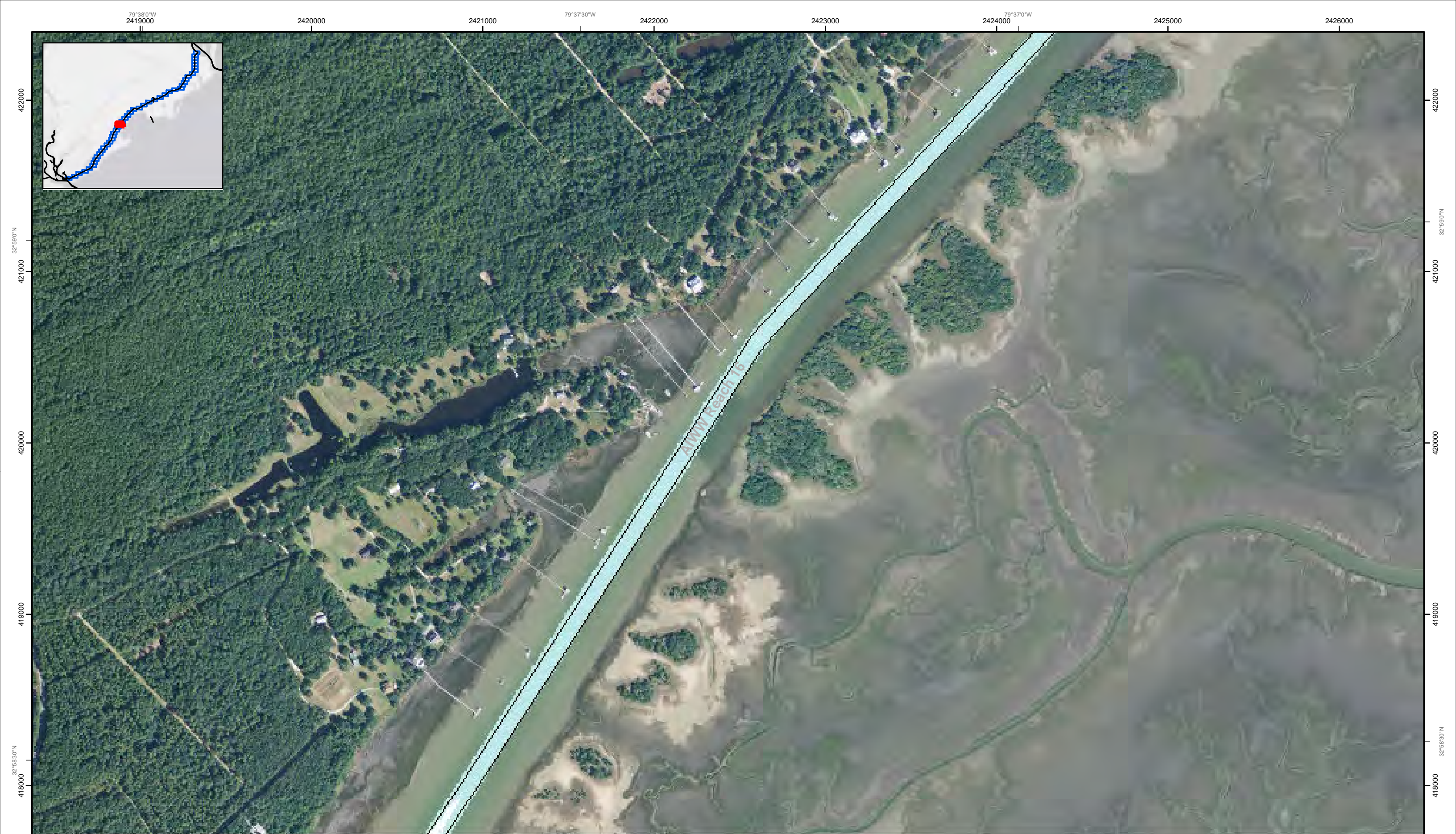
In no event shall the U.S. Army Corps of Engineers, Charleston District Office, Spatial Data Branch be liable for direct, indirect, incidental, consequential or special damages of any kind, including, but not limited to, loss of anticipated profits or benefits arising out of use of or reliance on the data.

These data sets have been developed from the best available sources. Although efforts have been made to ensure that the datasets are accurate and reliable, errors and variable conditions originating from physical sources used to develop the data may be reflected in the data supplied.

This product is not intended to be used for navigation. Mariners are encouraged to use all prudent safety measures.



SHEET
 REFERENCE
 NUMBER
C003
 Page 26 of 46



SHEET
REFERENCE
NUMBER
C003
Page 7 of 46

**Atlantic Intercoastal Waterway (AIWW)
Channel Survey**
The information depicted on this map represents the results of surveys made on the dates indicated and can only be considered as indicating the general conditions existing at that time.
Concluded on: **04 NOV 2015**
Charleston, SC to Port Royal, SC

U.S. ARMY ENGINEER DISTRICT
CORPS OF ENGINEERS
CHARLESTON, SOUTH CAROLINA

SPATIAL DATA BRANCH
69A HAGOOD AVE
CHARLESTON, SC 29403
CESAC-GIS@USACE.ARMY.MIL

Designed By: eHydro Software v3.82	Survey Date: dd MMM yyyy 20 NOV 2015	Production Date: 20 NOV 2015
Reviewed By: M. BOLES	Absolute Scale: 1:6,000	Project Reference Number: CESAC-PRA-0001
Reference Scale: 1 inch = 500 feet	Survey Type: CONDITION	
Projection: NAD 1983 StatePlane South Carolina FIPS 3900 Feet		

Shoalest Sounding
● Sounding
Sounding may cover several point areas and is calculated per reach quarter area
"±" indicates sounding above MLLW

USCG Beacon
■ Green
▲ Red
□ White

USCG Buoy
● Green
● Red
● Coast Guard Racon

○ White
○ Yellow
○ USCG Light

Depth in feet

■ Less than 3 ■ 3 to 12 ■ Greater than 12

0 250 500 1,000 1,500 Feet

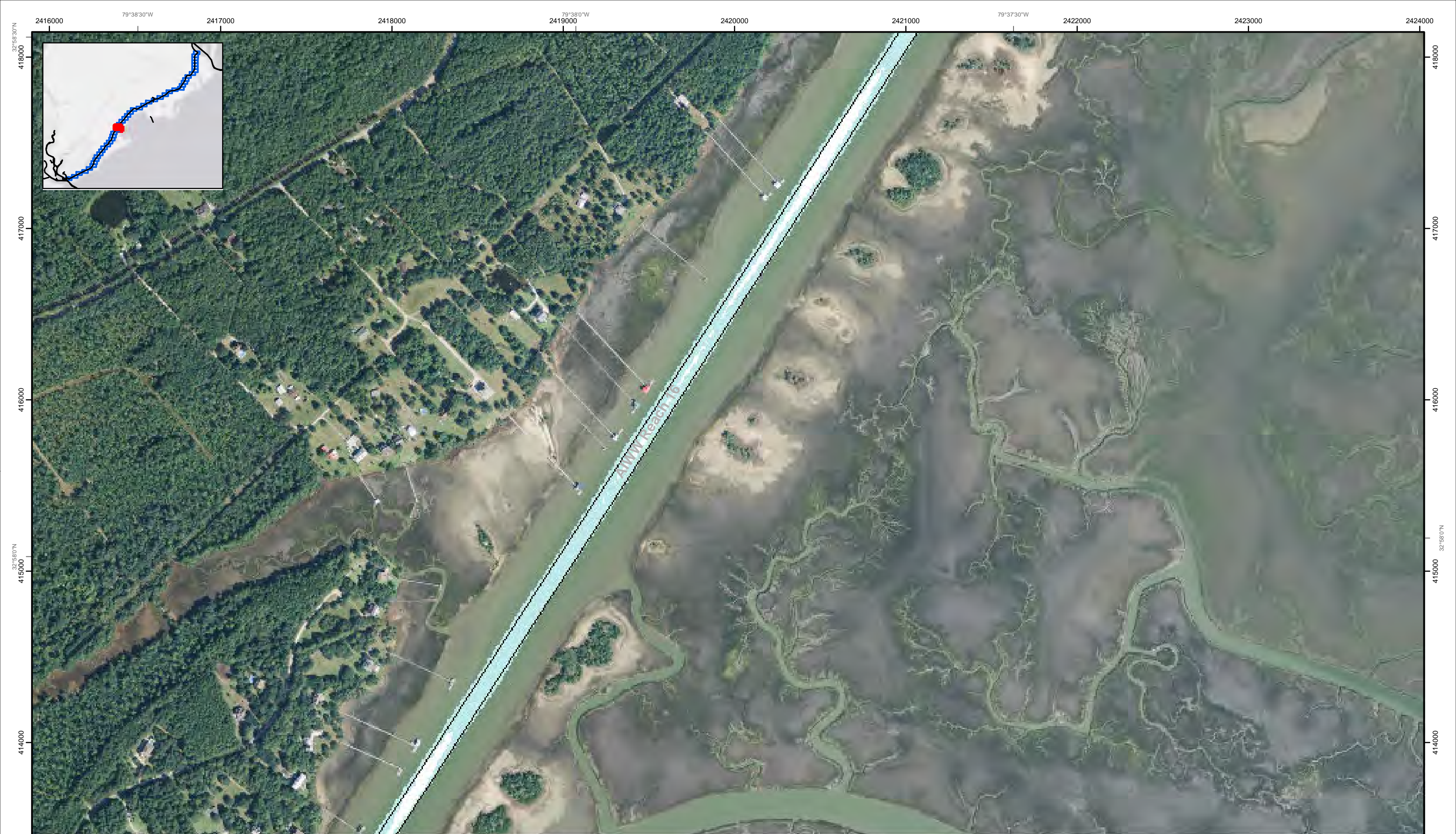


Production Notes:
1. The information depicted on this product is for plotting purposes only
2. Vector hydrographic data derived from surveys conducted by the USACE and approved partners
3. Soundings are in feet and refer to Mean Lower Low Water (MLLW)
4. Raster Background: ArcGIS Online Image Basemap dated 2010 - 2011

This product is not intended to be used for navigation.
Mariners are encouraged to use all prudent safety measures.

In no event shall the U.S. Army Corps of Engineers, Charleston District Office, Spatial Data Branch be liable for direct, indirect, incidental, consequential or special damages of any kind, including, but not limited to, loss of anticipated profits or benefits arising out of use of or reliance on the data.
These data sets have been developed from the best available sources. Although efforts have been made to ensure that the datasets are accurate and reliable, errors and variable conditions originating from physical sources used to develop the data may be reflected in the data supplied.





SHEET
REFERENCE
NUMBER
C003
Page 28 of 46

Atlantic Intercoastal Waterway (AIWW) Channel Survey
The information depicted on this map represents the results of surveys made on the dates indicated and can only be considered as indicating the general conditions existing at that time.
Concluded on: **04 NOV 2015**
Charleston, SC to Port Royal, SC

U.S. ARMY ENGINEER DISTRICT
CORPS OF ENGINEERS
CHARLESTON, SOUTH CAROLINA

SPATIAL DATA BRANCH
69A HAGOOD AVE
CHARLESTON, SC 29403
CESAC-GIS@USACE.ARMY.MIL

Designed By: eHydro Software v3.82	Survey Date: dd MMM yyyy 20 NOV 2015	Production Date: 20 NOV 2015
Reviewed By: M. BOLES	Absolute Scale: 1:6,000	Project Reference Number: CESAC-PRA-0001
Reference Scale: 1 inch = 500 feet	Survey Type: CONDITION	
Projection: NAD 1983 StatePlane South Carolina FIPS 3900 Feet		

Shoalest Sounding
● Sounding
Sounding may cover several point areas and is calculated per reach quarter area
*+ indicates sounding above MLLW

USCG Beacon
■ Green
▲ Red
□ White

USCG Buoy
● Green
● Red
● Coast Guard Racon

○ White
○ Yellow
○ USCG Light

Depth in feet

■ Less than 3 ■ 3 to 12 ■ Greater than 12

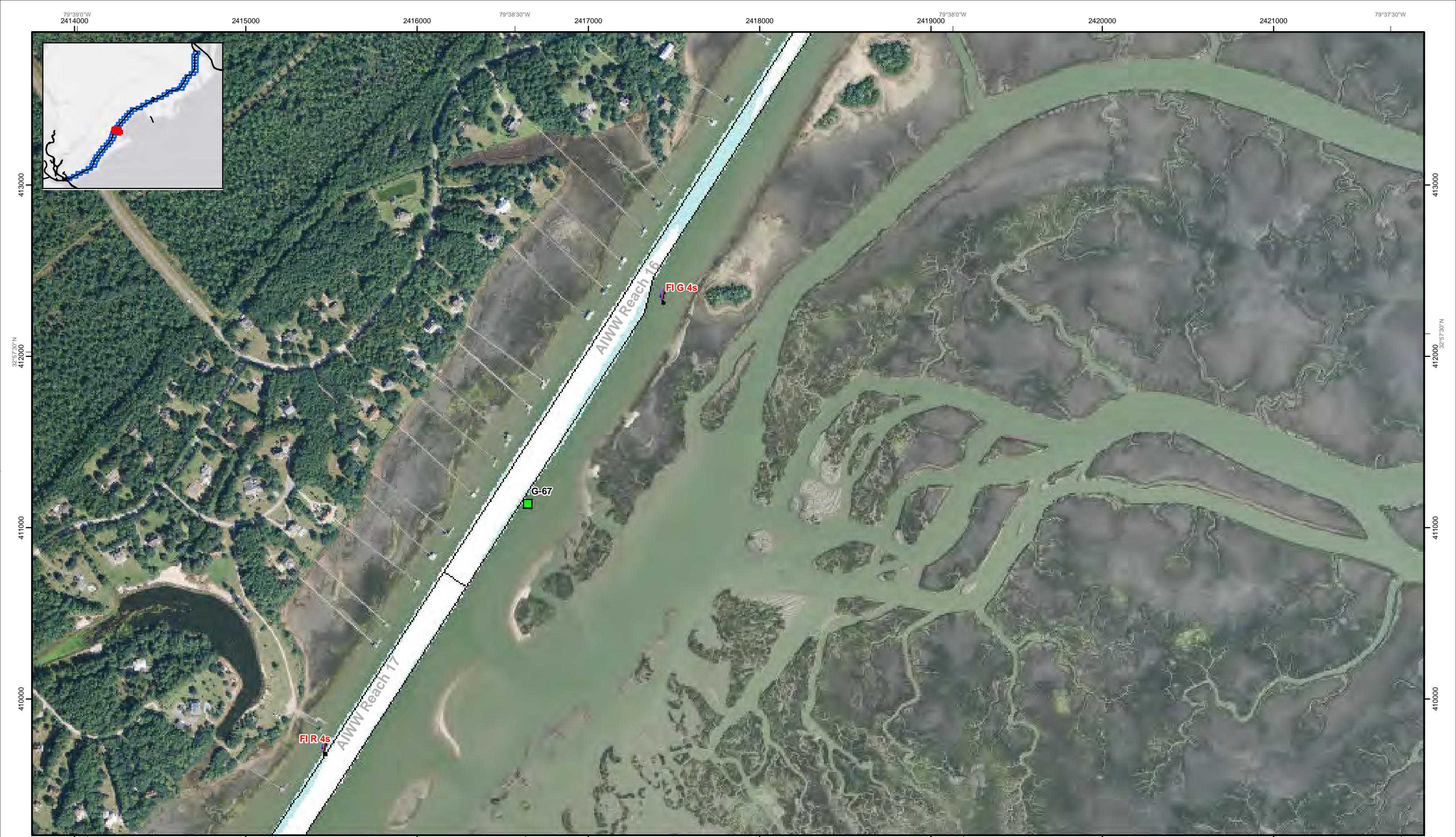
0 250 500 1,000 1,500 Feet



Production Notes:
1. The information depicted on this product is for plotting purposes only.
2. Vector hydrographic data derived from surveys conducted by the USACE and approved partners.
3. Soundings are in feet and refer to Mean Lower Low Water (MLLW).
4. Raster Background: ArcGIS Online Image Basemap dated 2010 - 2011.

In no event shall the U.S. Army Corps of Engineers, Charleston District Office, Spatial Data Branch be liable for direct, indirect, incidental, consequential or special damages of any kind, including, but not limited to, loss of anticipated profits or benefits arising out of use of or reliance on the data.
These data sets have been developed from the best available sources. Although efforts have been made to ensure that the datasets are accurate and reliable, errors and variable conditions originating from physical sources used to develop the data may be reflected in the data supplied.
This product is not intended to be used for navigation.
Mariners are encouraged to use all prudent safety measures.





SHEET REFERENCE NUMBER
C003
 Page 29 of 46

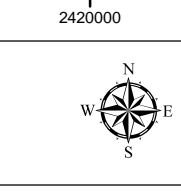
Atlantic Intercoastal Waterway (AIWW) Channel Survey
 The information depicted on this map represents the results of surveys made on the dates indicated and can only be considered as indicating the general conditions existing at that time.
 Concluded on: **04 NOV 2015**
 Charleston, SC to Port Royal, SC

U.S. ARMY ENGINEER DISTRICT CORPS OF ENGINEERS CHARLESTON, SOUTH CAROLINA SPATIAL DATA BRANCH 69A HAGOOD AVE CHARLESTON, SC 29403 CESAC-GIS@USACE.ARMY.MIL	Designed By: eHydro Software v3.82 Reviewed By: M. BOLES Reference Scale: 1 inch = 500 feet Projection: NAD 1983 StatePlane South Carolina FIPS 3900 Feet	Survey Date: dd MMM yyyy 20 NOV 2015 Project Reference Number: CESAC-PRA-0001 Survey Type: CONDITION	Production Date: 20 NOV 2015 Absolute Scale: 1:6,000
--	--	--	---

Shoalest Sounding
 Sounding may cover several point areas and is calculated per reach quarter area
 "+" indicates sounding above MLLW

USCG Beacon Green Red White	USCG Buoy Green Red Coast Guard Racon	White Yellow USCG Light
---	---	-------------------------------

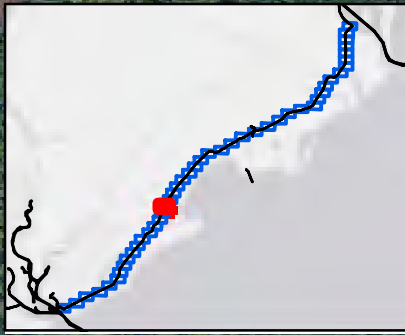
Depth in feet
 Less than 3
 3 to 12
 Greater than 12



Production Notes:
 1. The information depicted on this product is for plotting purposes only.
 2. Vector hydrographic data derived from surveys conducted by the USACE and approved partners.
 3. Soundings are in feet and refer to Mean Lower Low Water (MLLW).
 4. Raster Background: ArcGIS Online Image Basemap dated 2010 - 2011.
 In no event shall the U.S. Army Corps of Engineers, Charleston District Office, Spatial Data Branch be liable for direct, indirect, incidental, consequential or special damages of any kind, including, but not limited to, loss of anticipated profits or benefits arising out of use of or reliance on the data.
 These data sets have been developed from the best available sources. Although efforts have been made to ensure that the datasets are accurate and reliable, errors and variable conditions originating from physical sources used to develop the data may be reflected in the data supplied.
This product is not intended to be used for navigation.
Mariners are encouraged to use all prudent safety measures.



2411000 79°39'30"W 2412000 2413000 2414000 2415000 2416000 79°38'30"W 2417000 2418000



32°57'00"N 409000
408000
407000
406000
405000

32°57'00"N 409000
408000
407000
406000
405000



Atlantic Intercoastal Waterway (AIWW) Channel Survey
The information depicted on this map represents the results of surveys made on the dates indicated and can only be considered as indicating the general conditions existing at that time.
Concluded on: **04 NOV 2015**
Charleston, SC to Port Royal, SC

U.S. ARMY ENGINEER DISTRICT
CORPS OF ENGINEERS
CHARLESTON, SOUTH CAROLINA
SPATIAL DATA BRANCH
69A HAGOOD AVE
CHARLESTON, SC 29403
CESAC-GIS@USACE.ARMY.MIL

Designed By: **eHydro Software v3.82**
Reviewed By: **M. BOLES**
Reference Scale: **1 inch = 500 feet**
Projection: **NAD 1983 StatePlane South Carolina FIPS 3900 Feet**

Survey Date: **dd MMM yyyy**
Production Date: **20 NOV 2015**
Project Reference Number: **CESAC-PRA-0001**
Survey Type: **CONDITION**

Shoalest Sounding
Sounding may cover several point areas and is calculated per reach quarter area
"+" indicates sounding above MLLW

USCG Beacon
Green
Red
White

USCG Buoy
Green
Red
Coast Guard Racon

USCG Light
White
Yellow

Depth in feet
Less than 3
3 to 12
Greater than 12

0 250 500 1,000 1,500 Feet



Production Notes:
1. The information depicted on this product is for plotting purposes only
2. Vector hydrographic data derived from surveys conducted by the USACE and approved partners
3. Soundings are in feet and refer to Mean Lower Low Water (MLLW)
4. Raster Background: ArcGIS Online Image Basemap dated 2010 - 2011
This product is not intended to be used for navigation.
Mariners are encouraged to use all prudent safety measures.

In no event shall the U.S. Army Corps of Engineers, Charleston District Office, Spatial Data Branch be liable for direct, indirect, incidental, consequential or special damages of any kind, including, but not limited to, loss of anticipated profits or benefits arising out of use of or reliance on the data.
These data sets have been developed from the best available sources. Although efforts have been made to ensure that the datasets are accurate and reliable, errors and variable conditions originating from physical sources used to develop the data may be reflected in the data supplied.



SHEET REFERENCE NUMBER
C003
Page 30 of 46

79°40'0"W 2409000 2410000 2411000 79°39'30"W 2412000 2413000 2414000 79°39'0"W 2415000 2416000 79°38'30"W 2417000



2409000 79°40'0"W 2410000 2411000 2412000 2413000 2414000 79°39'0"W 2415000 2416000 79°38'30"W 2417000

SHEET
REFERENCE
NUMBER
C003
Page 16 of 46

Atlantic Intercoastal Waterway (AIWW) Channel Survey
The information depicted on this map represents the results of surveys made on the dates indicated and can only be considered as indicating the general conditions existing at that time.
Concluded on: **04 NOV 2015**
Charleston, SC to Port Royal, SC

U.S. ARMY ENGINEER DISTRICT
CORPS OF ENGINEERS
CHARLESTON, SOUTH CAROLINA

SPATIAL DATA BRANCH
69A HAGOOD AVE
CHARLESTON, SC 29403
CESAC-GIS@USACE.ARMY.MIL

Designed By:
eHydro Software v3.82
Reviewed By:
M. BOLES
Reference Scale:
1 inch = 500 feet
Projection:
NAD 1983 StatePlane South Carolina FIPS 3900 Feet

Survey Date:
dd MMM yyyy
20 NOV 2015
Project Reference Number:
CESAC-PRA-0001
Survey Type:
CONDITION

Shoalest Sounding
● Sounding
Sounding may cover several point areas and is calculated per reach quarter area
"±" indicates sounding above MLLW

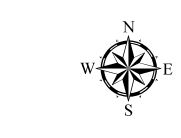
USCG Beacon
■ Green
▲ Red
□ White

USCG Buoy
● Green
● Red
● Coast Guard Racon

○ White
○ Yellow
○ USCG Light

Depth in feet
■ Less than 3
■ 3 to 12
■ Greater than 12

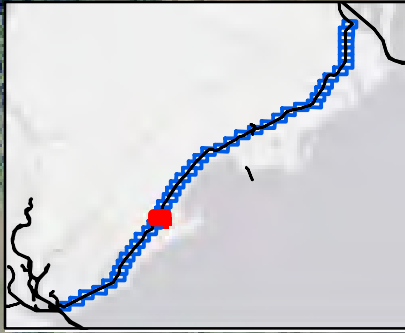
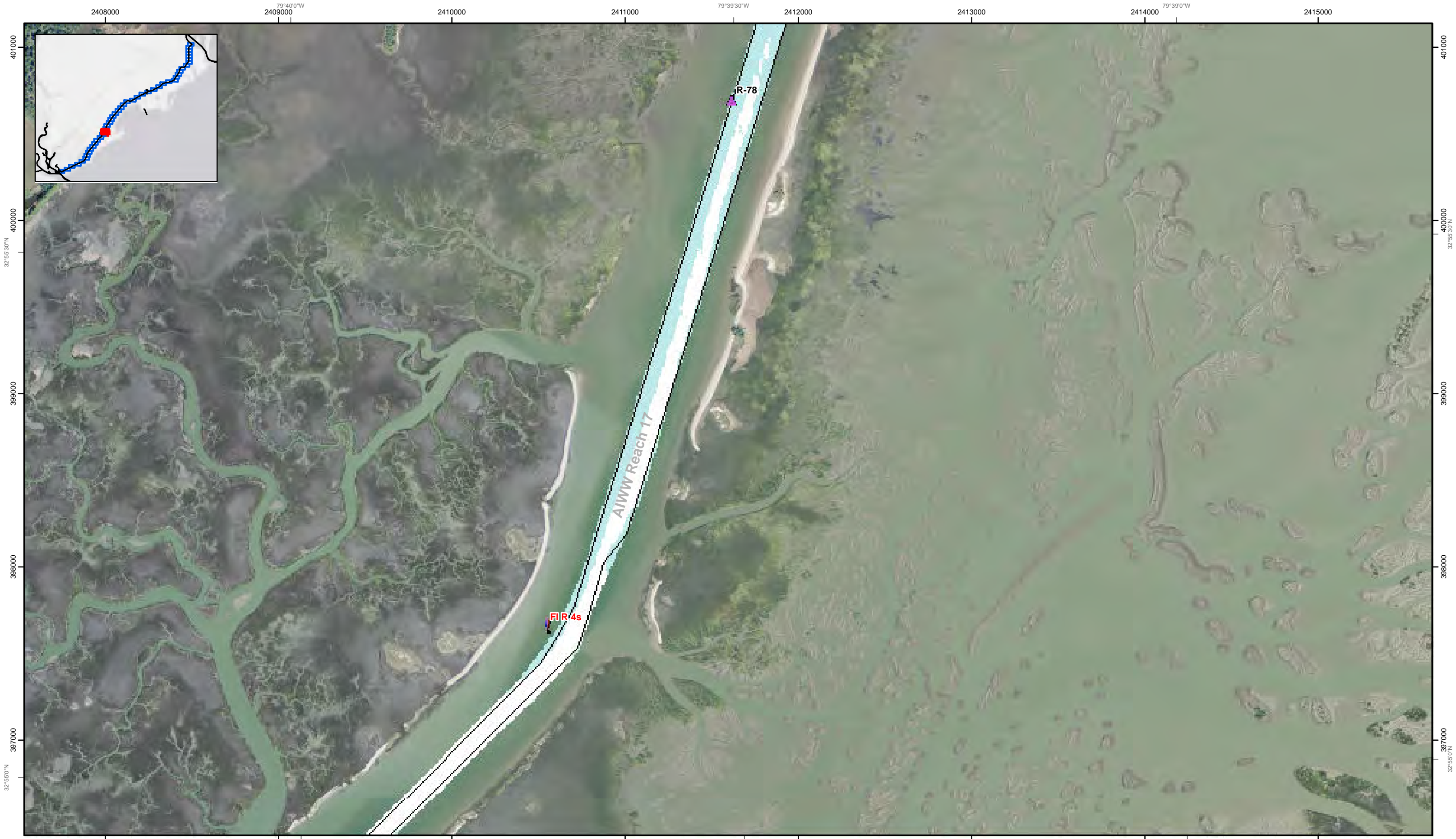
0 250 500 1,000 1,500 Feet



Production Notes:
1. The information depicted on this product is for plotting purposes only.
2. Vector hydrographic data derived from surveys conducted by the USACE and approved partners.
3. Soundings are in feet and refer to Mean Lower Low Water (MLLW).
4. Raster Background: ArcGIS Online Image Basemap dated 2010 - 2011.

In no event shall the U.S. Army Corps of Engineers, Charleston District Office, Spatial Data Branch be liable for direct, indirect, incidental, consequential or special damages of any kind, including, but not limited to, loss of anticipated profits or benefits arising out of use of or reliance on the data.
These data sets have been developed from the best available sources. Although efforts have been made to ensure that the datasets are accurate and reliable, errors and variable conditions originating from physical sources used to develop the data may be reflected in the data supplied.
This product is not intended to be used for navigation.
Mariners are encouraged to use all prudent safety measures.





SHEET
REFERENCE
NUMBER
C003
Page 32 of 46

**Atlantic Intercoastal Waterway (AIWW)
Channel Survey**
The information depicted on this map represents the
results of surveys made on the dates indicated and
can only be considered as indicating the general
conditions existing at that time.
Concluded on: **04 NOV 2015**
Charleston, SC to Port Royal, SC

U.S. ARMY ENGINEER DISTRICT
CORPS OF ENGINEERS
CHARLESTON, SOUTH CAROLINA
SPATIAL DATA BRANCH
69A HAGOOD AVE
CHARLESTON, SC 29403
CESAC-GIS@USACE.ARMY.MIL

Designed By: eHydro Software v3.82	Survey Date: dd MMM yyyy 20 NOV 2015	Production Date: 20 NOV 2015
Reviewed By: M. BOLES	Absolute Scale: 1:6,000	Project Reference Number: CESAC-PRA-0001
Reference Scale: 1 inch = 500 feet	Survey Type: CONDITION	
Projection: NAD 1983 StatePlane South Carolina FIPS 3900 Feet		

Shoalest Sounding
● Sounding
Sounding may cover several
point areas and is calculated
per reach quarter area
*+ indicates sounding above MLLW

USCG Beacon
■ Green
▲ Red
□ White

USCG Buoy
● Green
● Red
○ Coast Guard Racon

Depth in feet
● White
● Yellow
● USCG Light

■ Less than 3
■ 3 to 12
■ Greater than 12



Production Notes:
1. The information depicted on this
product is for plotting purposes only
2. Vector hydrographic data derived
from surveys conducted by the
USACE and approved partners
3. Soundings are in feet and refer
to Mean Lower Low Water (MLLW)
4. Raster Background: ArcGIS Online
Image Basemap dated 2010 - 2011

In no event shall the U.S. Army Corps of Engineers, Charleston
District Office, Spatial Data Branch be liable for direct, indirect,
incidental, consequential or special damages of any kind, including,
but not limited to, loss of anticipated profits or benefits arising out of
use of or reliance on the data.
These data sets have been developed from the best available
sources. Although efforts have been made to ensure that the
datasets are accurate and reliable, errors and variable conditions
originating from physical sources used to develop the data may be
reflected in the data supplied.
This product is not intended to be used for navigation.
Mariners are encouraged to use all prudent safety measures.





2405000 2406000 2407000 2408000 2409000 2410000 2411000 2412000

32°55'00"N 32°54'30"N 32°54'00"N 32°53'30"N 32°53'00"N

3960000 3950000 3940000 3930000

2405000 2406000 2407000 2408000 2409000 2410000 2411000 2412000

79°40'30"W 79°40'00"W 79°39'30"W

Atlantic Intercoastal Waterway (AIWW) Channel Survey

The information depicted on this map represents the results of surveys made on the dates indicated and can only be considered as indicating the general conditions existing at that time.

Concluded on: **04 NOV 2015**

Charleston, SC to Port Royal, SC

U.S. ARMY ENGINEER DISTRICT
CORPS OF ENGINEERS
CHARLESTON, SOUTH CAROLINA

SPATIAL DATA BRANCH
69A HAGOOD AVE
CHARLESTON, SC 29403
CESAC-GIS@USACE.ARMY.MIL

Designed By: eHydro Software v3.82	Survey Date: dd MMM yyyy 20 NOV 2015	Production Date: 20 NOV 2015
Reviewed By: M. BOLES	Absolute Scale: 1:6,000	Project Reference Number: CESAC-PRA-0001
Reference Scale: 1 inch = 500 feet	Survey Type: CONDITION	
Projection: NAD 1983 StatePlane South Carolina FIPS 3900 Feet		

Shoalest Sounding

● Sounding

Sounding may cover several point areas and is calculated per reach quarter area

"+" indicates sounding above MLLW

USCG Beacon

■ Green

▲ Red

□ White

USCG Buoy

● Green

● Red

● Coast Guard Racon

USCG Light

○ White

○ Yellow

○ USCG Light

Depth in feet

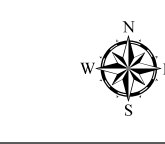
■ Less than 3

■ 3 to 12

■ Greater than 12

0 250 500 1,000 1,500

Feet



Production Notes:

- The information depicted on this product is for plotting purposes only.
- Vector hydrographic data derived from surveys conducted by the USACE and approved partners.
- Soundings are in feet and refer to Mean Lower Low Water (MLLW).
- Raster Background: ArcGIS Online Image Basemap dated 2010 - 2011.

In no event shall the U.S. Army Corps of Engineers, Charleston District Office, Spatial Data Branch be liable for direct, indirect, incidental, consequential or special damages of any kind, including, but not limited to, loss of anticipated profits or benefits arising out of use of or reliance on the data.

These data sets have been developed from the best available sources. Although efforts have been made to ensure that the datasets are accurate and reliable, errors and variable conditions originating from physical sources used to develop the data may be reflected in the data supplied.

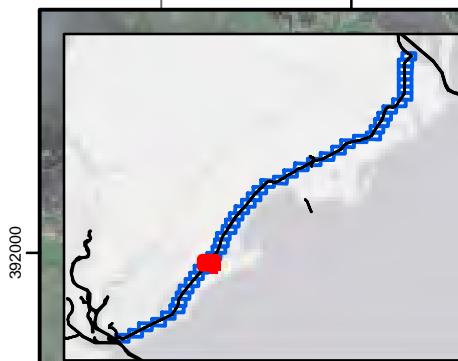
This product is not intended to be used for navigation.

Mariners are encouraged to use all prudent safety measures.



SHEET
REFERENCE
NUMBER
C003
Page 33 of 46

79°41'30"W 2402000 2403000 2404000 2405000 2406000 79°40'30"W 2407000 2408000 2409000 79°40'0"W



32°54'0"N

3920000

3910000

3900000

3890000

3880000

3920000

3910000

3900000

3890000

3880000

Atlantic Intercoastal Waterway (AIWW) Channel Survey
 The information depicted on this map represents the results of surveys made on the dates indicated and can only be considered as indicating the general conditions existing at that time.
 Concluded on: **04 NOV 2015**
 Charleston, SC to Port Royal, SC

U.S. ARMY ENGINEER DISTRICT
 CORPS OF ENGINEERS
 CHARLESTON, SOUTH CAROLINA
 SPATIAL DATA BRANCH
 69A HAGOOD AVE
 CHARLESTON, SC 29403
 CESAC-GIS@USACE.ARMY.MIL

Designed By: **eHydro Software v3.82**
 Reviewed By: **M. BOLES**
 Reference Scale: **1 inch = 500 feet**
 Projection: **NAD 1983 StatePlane South Carolina FIPS 3900 Feet**

Survey Date: **dd MMM yyyy**
 Project Reference Number: **CESAC-PRA-0001**
 Survey Type: **CONDITION**

Shoalest Sounding
 Sounding may cover several point areas and is calculated per reach quarter area
 "+" indicates sounding above MLLW

USCG Beacon
 Green ▲ Green
 Red ▲ Red
 White □ White

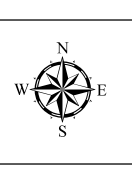
USCG Buoy
 Green ● Green
 Red ● Red
 Coast Guard Racon ●

USCG Light
 White ○ White
 Yellow ○ Yellow

Depth in feet

Less than 3 3 to 12 Greater than 12

0 250 500 1,000 1,500



Production Notes:
 1. The information depicted on this product is for plotting purposes only.
 2. Vector hydrographic data derived from surveys conducted by the USACE and approved partners.
 3. Soundings are in feet and refer to Mean Lower Low Water (MLLW).
 4. Raster Background: ArcGIS Online Image Basemap dated 2010 - 2011.
 In no event shall the U.S. Army Corps of Engineers, Charleston District Office, Spatial Data Branch be liable for direct, indirect, incidental, consequential or special damages of any kind, including, but not limited to, loss of anticipated profits or benefits arising out of use of or reliance on the data.
 These data sets have been developed from the best available sources. Although efforts have been made to ensure that the datasets are accurate and reliable, errors and variable conditions originating from physical sources used to develop the data may be reflected in the data supplied.
 This product is not intended to be used for navigation.
 Mariners are encouraged to use all prudent safety measures.



SHEET REFERENCE NUMBER
C003
 Page 34 of 46

79°42'30"W 2397000 2398000 2399000 2400000 2401000 2402000 2403000 2404000 79°41'0"W



79°42'30"W 2397000 2398000 2399000 2400000 2401000 2402000 2403000 2404000 79°41'0"W

SHEET
REFERENCE
NUMBER
C003
Page 35 of 46

**Atlantic Intercoastal Waterway (AIWW)
Channel Survey**
The information depicted on this map represents the
results of surveys made on the dates indicated and
can only be considered as indicating the general
conditions existing at that time.
Concluded on: **04 NOV 2015**
Charleston, SC to Port Royal, SC

U.S. ARMY ENGINEER DISTRICT
CORPS OF ENGINEERS
CHARLESTON, SOUTH CAROLINA
SPATIAL DATA BRANCH
69A HAGOOD AVE
CHARLESTON, SC 29403
CESAC-GIS@USACE.ARMY.MIL

Designed By: eHydro Software v3.82	Survey Date: dd MMM yyyy 20 NOV 2015	Production Date: 20 NOV 2015
Reviewed By: M. BOLES	Absolute Scale: 1:6,000	Project Reference Number: CESAC-PRA-0001
Reference Scale: 1 inch = 500 feet	Survey Type: CONDITION	
Projection: NAD 1983 StatePlane South Carolina FIPS 3900 Feet		

Shoalest Sounding
Sounding may cover several
point areas and is calculated
per reach quarter area
"+" indicates sounding above MLLW

USCG Beacon
Green
Red
White

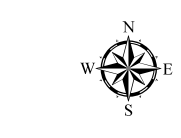
USCG Buoy
Green
Red
Coast Guard Racon

White
Yellow
USCG Light

Depth in feet

Less than 3 3 to 12 Greater than 12

0 250 500 1,000 1,500

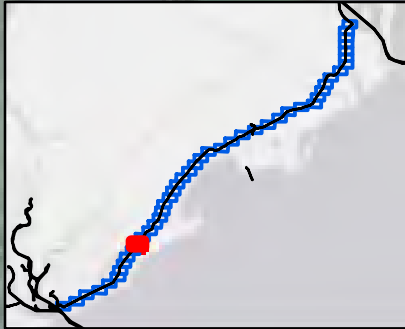


Production Notes:
1. The information depicted on this
product is for plotting purposes only
2. Vector hydrographic data derived
from surveys conducted by the
USACE and approved partners
3. Soundings are in feet and refer
to Mean Lower Low Water (MLLW)
4. Raster Background: ArcGIS Online
Image Basemap dated 2010 - 2011
This product is not intended to be used for navigation.
Mariners are encouraged to use all prudent safety measures.

In no event shall the U.S. Army Corps of Engineers, Charleston
District Office, Spatial Data Branch be liable for direct, indirect,
incidental, consequential or special damages of any kind, including,
but not limited to, loss of anticipated profits or benefits arising out of
use of or reliance on the data.
These data sets have been developed from the best available
sources. Although efforts have been made to ensure that the
datasets are accurate and reliable, errors and variable conditions
originating from physical sources used to develop the data may be
reflected in the data supplied.
This product is not intended to be used for navigation.
Mariners are encouraged to use all prudent safety measures.



79°43'0"W 2394000 2395000 2396000 79°42'30"W 2397000 2398000 2399000 79°42'0"W 2400000 2401000



3840000
3830000
3820000
3810000
3800000

3840000
3830000
3820000
3810000
3800000

32°52'30\"/>

32°52'30\"/>

2394000 2395000 2396000 79°42'30"W 2397000 2398000 2399000 79°42'0"W 2400000 2401000

SHEET
REFERENCE
NUMBER
C003
Page 36 of 46

Atlantic Intercoastal Waterway (AIWW) Channel Survey
The information depicted on this map represents the results of surveys made on the dates indicated and can only be considered as indicating the general conditions existing at that time.
Concluded on: **04 NOV 2015**
Charleston, SC to Port Royal, SC

U.S. ARMY ENGINEER DISTRICT
CORPS OF ENGINEERS
CHARLESTON, SOUTH CAROLINA
SPATIAL DATA BRANCH
69A HAGOOD AVE
CHARLESTON, SC 29403
CESAC-GIS@USACE.ARMY.MIL

Designed By:
eHydro Software v3.82
Reviewed By:
M. BOLES
Reference Scale:
1 inch = 500 feet
Projection:
NAD 1983 StatePlane South Carolina FIPS 3900 Feet

Survey Date:
dd MMM yyyy
Project Reference Number:
CESAC-PRA-0001
Survey Type:
CONDITION

Shoalest Sounding
● Sounding
Sounding may cover several point areas and is calculated per reach quarter area
*+ indicates sounding above MLLW

USCG Beacon
■ Green
▲ Red
□ White

USCG Buoy
● Green
● Red
● Coast Guard Racon

○ White
○ Yellow
○ USCG Light

Depth in feet
■ Less than 3
■ 3 to 12
■ Greater than 12



Production Notes:
1. The information depicted on this product is for plotting purposes only.
2. Vector hydrographic data derived from surveys conducted by the USACE and approved partners.
3. Soundings are in feet and refer to Mean Lower Low Water (MLLW).
4. Raster Background: ArcGIS Online Image Basemap dated 2010 - 2011.

In no event shall the U.S. Army Corps of Engineers, Charleston District Office, Spatial Data Branch be liable for direct, indirect, incidental, consequential or special damages of any kind, including, but not limited to, loss of anticipated profits or benefits arising out of use of or reliance on the data.
These data sets have been developed from the best available sources. Although efforts have been made to ensure that the datasets are accurate and reliable, errors and variable conditions originating from physical sources used to develop the data may be reflected in the data supplied.
This product is not intended to be used for navigation.
Mariners are encouraged to use all prudent safety measures.





SHEET
REFERENCE
NUMBER
C003
Page 37 of 46

Atlantic Intercoastal Waterway (AIWW) Channel Survey
 The information depicted on this map represents the results of surveys made on the dates indicated and can only be considered as indicating the general conditions existing at that time.
 Concluded on: **04 NOV 2015**
 Charleston, SC to Port Royal, SC

U.S. ARMY ENGINEER DISTRICT
CORPS OF ENGINEERS
CHARLESTON, SOUTH CAROLINA

 SPATIAL DATA BRANCH
69A HAGOOD AVE
CHARLESTON, SC 29403
CESAC-GIS@USACE.ARMY.MIL

Designed By: eHydro Software v3.82	Survey Date: dd MMM yyyy 20 NOV 2015	Production Date: 20 NOV 2015
Reviewed By: M. BOLES	Absolute Scale: 1:6,000	Project Reference Number: CESAC-PRA-0001
Reference Scale: 1 inch = 500 feet	Survey Type: CONDITION	
Projection: NAD 1983 StatePlane South Carolina FIPS 3900 Feet		

Shoalest Sounding
 Sounding may cover several point areas and is calculated per reach quarter area
 "+" indicates sounding above MLLW

USCG Beacon
 Green
 Red
 White

USCG Buoy
 Green
 Red
 Coast Guard Racon

USCG Light
 White
 Yellow

Depth in feet

Less than 3 3 to 12 Greater than 12

0 250 500 1,000 1,500

Feet



Production Notes:

- The information depicted on this product is for plotting purposes only.
- Vector hydrographic data derived from surveys conducted by the USACE and approved partners.
- Soundings are in feet and refer to Mean Lower Low Water (MLLW).
- Raster Background: ArcGIS Online Image Basemap dated 2010 - 2011.

In no event shall the U.S. Army Corps of Engineers, Charleston District Office, Spatial Data Branch be liable for direct, indirect, incidental, consequential or special damages of any kind, including, but not limited to, loss of anticipated profits or benefits arising out of use of or reliance on the data.

These data sets have been developed from the best available sources. Although efforts have been made to ensure that the datasets are accurate and reliable, errors and variable conditions originating from physical sources used to develop the data may be reflected in the data supplied.

This product is not intended to be used for navigation.
 Mariners are encouraged to use all prudent safety measures.





SHEET
REFERENCE
NUMBER
C003
Page 38 of 46

Atlantic Intercoastal Waterway (AIWW) Channel Survey
The information depicted on this map represents the results of surveys made on the dates indicated and can only be considered as indicating the general conditions existing at that time.
Concluded on: **04 NOV 2015**
Charleston, SC to Port Royal, SC

U.S. ARMY ENGINEER DISTRICT
CORPS OF ENGINEERS
CHARLESTON, SOUTH CAROLINA
SPATIAL DATA BRANCH
69A HAGOOD AVE
CHARLESTON, SC 29403
CESAC-GIS@USACE.ARMY.MIL

Designed By: eHydro Software v3.82	Survey Date: dd MMM yyyy 20 NOV 2015	Production Date: dd MMM yyyy 20 NOV 2015
Reviewed By: M. BOLES	Absolute Scale: 1:6,000	Project Reference Number: CESAC-PRA-0001
Reference Scale: 1 inch = 500 feet	Survey Type: CONDITION	
Projection: NAD 1983 StatePlane South Carolina FIPS 3900 Feet		

Shoalest Sounding
● Sounding
Sounding may cover several point areas and is calculated per reach quarter area
+ indicates sounding above MLLW

USCG Beacon
■ Green
▲ Red
□ White

USCG Buoy
● Green
● Red
○ Coast Guard Racon

○ White
○ Yellow
○ USCG Light

Depth in feet

Less than 3	3 to 12	Greater than 12
-------------	---------	-----------------

0 250 500 1,000 1,500 Feet



Production Notes:
1. The information depicted on this product is for plotting purposes only.
2. Vector hydrographic data derived from surveys conducted by the USACE and approved partners to Mean Lower Low Water (MLLW).
3. Soundings are in feet and refer to Mean Lower Low Water (MLLW).
4. Raster Background: ArcGIS Online Image Basemap dated 2010 - 2011.

In no event shall the U.S. Army Corps of Engineers, Charleston District Office, Spatial Data Branch be liable for direct, indirect, incidental, consequential or special damages of any kind, including, but not limited to, loss of anticipated profits or benefits arising out of use of or reliance on the data.
These data sets have been developed from the best available sources. Although efforts have been made to ensure that the datasets are accurate and reliable, errors and variable conditions originating from physical sources used to develop the data may be reflected in the data supplied.
This product is not intended to be used for navigation.
Mariners are encouraged to use all prudent safety measures.





SHEET
REFERENCE
NUMBER
C003
Page 39 of 46

Atlantic Intercoastal Waterway (AIWW) Channel Survey
The information depicted on this map represents the results of surveys made on the dates indicated and can only be considered as indicating the general conditions existing at that time.
Concluded on: **04 NOV 2015**
Charleston, SC to Port Royal, SC

U.S. ARMY ENGINEER DISTRICT
CORPS OF ENGINEERS
CHARLESTON, SOUTH CAROLINA

SPATIAL DATA BRANCH
69A HAGOOD AVE
CHARLESTON, SC 29403
CESAC-GIS@USACE.ARMY.MIL

Designed By: eHydro Software v3.82	Survey Date: dd MMM yyyy 20 NOV 2015	Production Date: 20 NOV 2015
Reviewed By: M. BOLES	Absolute Scale: 1:6,000	Project Reference Number: CESAC-PRA-0001
Reference Scale: 1 inch = 500 feet	Survey Type: CONDITION	
Projection: NAD 1983 StatePlane South Carolina FIPS 3900 Feet		

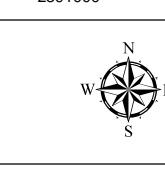
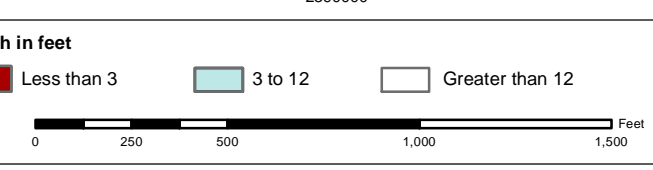
Shoalest Sounding
● Sounding
Sounding may cover several point areas and is calculated per reach quarter area
"±" indicates sounding above MLLW

USCG Beacon
■ Green
▲ Red
□ White

USCG Buoy
● Green
● Red
○ Coast Guard Racon

● White
● Yellow
● USCG Light

Depth in feet
■ Less than 3
■ 3 to 12
■ Greater than 12



Production Notes:
1. The information depicted on this product is for plotting purposes only.
2. Vector hydrographic data derived from surveys conducted by the USACE and approved partners to Mean Lower Low Water (MLLW).
3. Soundings are in feet and refer to Mean Lower Low Water (MLLW).
4. Raster Background: ArcGIS Online Image Basemap dated 2010 - 2011.

In no event shall the U.S. Army Corps of Engineers, Charleston District Office, Spatial Data Branch be liable for direct, indirect, incidental, consequential or special damages of any kind, including, but not limited to, loss of anticipated profits or benefits arising out of use of or reliance on the data.
These data sets have been developed from the best available sources. Although efforts have been made to ensure that the datasets are accurate and reliable, errors and variable conditions originating from physical sources used to develop the data may be reflected in the data supplied.
This product is not intended to be used for navigation.
Mariners are encouraged to use all prudent safety measures.





SHEET
REFERENCE
NUMBER
C003
Page 40 of 46

Atlantic Intercoastal Waterway (AIWW) Channel Survey
The information depicted on this map represents the results of surveys made on the dates indicated and can only be considered as indicating the general conditions existing at that time.
Concluded on: **04 NOV 2015**
Charleston, SC to Port Royal, SC

U.S. ARMY ENGINEER DISTRICT
CORPS OF ENGINEERS
CHARLESTON, SOUTH CAROLINA
SPATIAL DATA BRANCH
69A HAGOOD AVE
CHARLESTON, SC 29403
CESAC-GIS@USACE.ARMY.MIL

Designed By: eHydro Software v3.82	Survey Date: dd MMM yyyy 20 NOV 2015	Production Date: 20 NOV 2015
Reviewed By: M. BOLES	Absolute Scale: 1:6,000	Project Reference Number: CESAC-PRA-0001
Reference Scale: 1 inch = 500 feet	Survey Type: CONDITION	
Projection: NAD 1983 StatePlane South Carolina FIPS 3900 Feet		

Shoalest Sounding
Sounding may cover several point areas and is calculated per reach quarter area
"+" indicates sounding above MLLW

● Sounding	■ Green USCG Beacon	● Green USCG Buoy	○ White USCG Light
	▲ Red USCG Beacon	● Red USCG Buoy	○ Yellow USCG Light
	□ White USCG Beacon	● Coast Guard Racon	

Depth in feet

■ Less than 3	■ 3 to 12	■ Greater than 12
---------------	-----------	-------------------

0 250 500 1,000 1,500 Feet



Production Notes:
1. The information depicted on this product is for plotting purposes only.
2. Vector hydrographic data derived from surveys conducted by the USACE and approved partners.
3. Soundings are in feet and refer to Mean Lower Low Water (MLLW).
4. Raster Background: ArcGIS Online Image Basemap dated 2010 - 2011.
In no event shall the U.S. Army Corps of Engineers, Charleston District Office, Spatial Data Branch be liable for direct, indirect, incidental, consequential or special damages of any kind, including, but not limited to, loss of anticipated profits or benefits arising out of use of or reliance on the data.
These data sets have been developed from the best available sources. Although efforts have been made to ensure that the datasets are accurate and reliable, errors and variable conditions originating from physical sources used to develop the data may be reflected in the data supplied.
This product is not intended to be used for navigation.
Mariners are encouraged to use all prudent safety measures.



79°45'30"W 2382000 2383000 2384000 2385000 2386000 2387000 2388000 2389000 79°44'30"W



32°49'00"N
360000
361000
362000

32°49'00"N
360000
361000
362000

79°45'30"W 2382000 2383000 2384000 2385000 2386000 2387000 2388000 2389000 79°44'30"W

Atlantic Intercoastal Waterway (AIWW) Channel Survey
The information depicted on this map represents the results of surveys made on the dates indicated and can only be considered as indicating the general conditions existing at that time.
Concluded on: **04 NOV 2015**
Charleston, SC to Port Royal, SC

U.S. ARMY ENGINEER DISTRICT
CORPS OF ENGINEERS
CHARLESTON, SOUTH CAROLINA
SPATIAL DATA BRANCH
69A HAGOOD AVE
CHARLESTON, SC 29403
CESAC-GIS@USACE.ARMY.MIL

Designed By: eHydro Software v3.82	Survey Date: dd MMM yyyy 20 NOV 2015	Production Date: 20 NOV 2015
Reviewed By: M. BOLES	Absolute Scale: 1:6,000	Project Reference Number: CESAC-PRA-0001
Reference Scale: 1 inch = 500 feet	Survey Type: CONDITION	
Projection: NAD 1983 StatePlane South Carolina FIPS 3900 Feet		

Shoalest Sounding
● Sounding
Sounding may cover several point areas and is calculated per reach quarter area
*+ indicates sounding above MLLW

USCG Beacon
■ Green
▲ Red
□ White

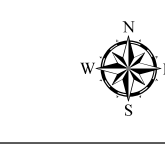
USCG Buoy
● Green
● Red
● Coast Guard Racon

○ White
○ Yellow
○ USCG Light

Depth in feet

Less than 3	3 to 12	Greater than 12
-------------	---------	-----------------

0 250 500 1,000 1,500 Feet



Production Notes:

- The information depicted on this product is for plotting purposes only.
- Vector hydrographic data derived from surveys conducted by the USACE and approved partners.
- Soundings are in feet and refer to Mean Lower Low Water (MLLW).
- Raster Background: ArcGIS Online Image Basemap dated 2010 - 2011.

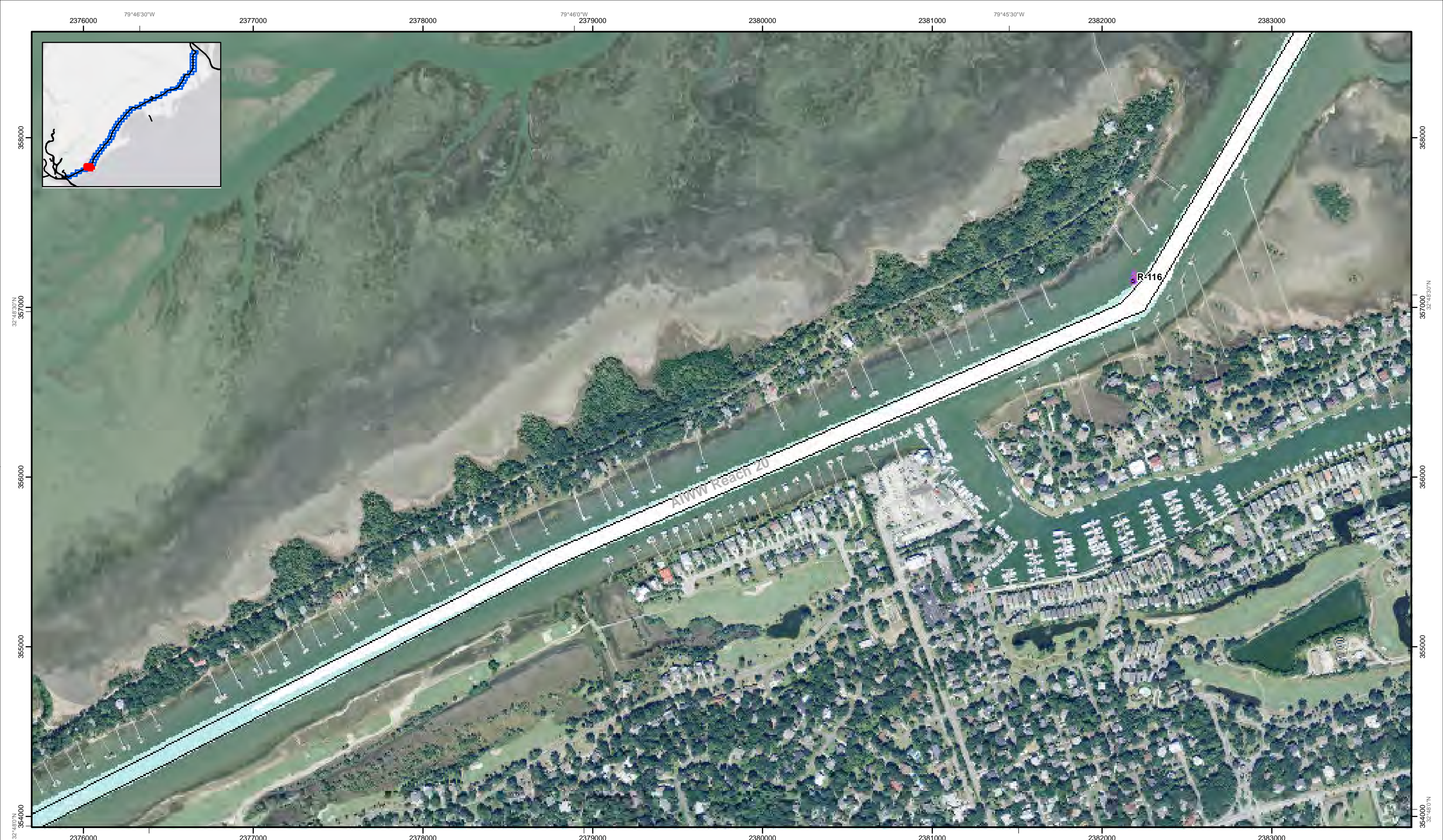
In no event shall the U.S. Army Corps of Engineers, Charleston District Office, Spatial Data Branch be liable for direct, indirect, incidental, consequential or special damages of any kind, including, but not limited to, loss of anticipated profits or benefits arising out of use of or reliance on the data.

These data sets have been developed from the best available sources. Although efforts have been made to ensure that the datasets are accurate and reliable, errors and variable conditions originating from physical sources used to develop the data may be reflected in the data supplied.

This product is not intended to be used for navigation.
Mariners are encouraged to use all prudent safety measures.



SHEET
REFERENCE
NUMBER
C003
Page 41 of 46



SHEET
REFERENCE
NUMBER
C003
Page 42 of 46

Atlantic Intercoastal Waterway (AIWW) Channel Survey
The information depicted on this map represents the results of surveys made on the dates indicated and can only be considered as indicating the general conditions existing at that time.
Concluded on: **04 NOV 2015**
Charleston, SC to Port Royal, SC

U.S. ARMY ENGINEER DISTRICT
CORPS OF ENGINEERS
CHARLESTON, SOUTH CAROLINA

SPATIAL DATA BRANCH
69A HAGOOD AVE
CHARLESTON, SC 29403
CESAC-GIS@USACE.ARMY.MIL

Designed By: eHydro Software v3.82	Survey Date: dd MMM yyyy 20 NOV 2015	Production Date: 20 NOV 2015
Reviewed By: M. BOLES	Absolute Scale: 1:6,000	Project Reference Number: CESAC-PRA-0001
Reference Scale: 1 inch = 500 feet	Survey Type: CONDITION	
Projection: NAD 1983 StatePlane South Carolina FIPS 3900 Feet		

Shoalest Sounding
● Sounding
Sounding may cover several point areas and is calculated per reach quarter area
"±" indicates sounding above MLLW

USCG Beacon
■ Green
▲ Red

USCG Buoy
● Green
● Red
● Coast Guard Racon

○ White
○ Yellow
○ USCG Light

Depth in feet

Less than 3	3 to 12	Greater than 12
-------------	---------	-----------------

0 250 500 1,000 1,500 Feet



Production Notes:

- The information depicted on this product is for plotting purposes only.
- Vector hydrographic data derived from surveys conducted by the USACE and approved partners.
- Soundings are in feet and refer to Mean Lower Low Water (MLLW).
- Raster Background: ArcGIS Online Image Basemap dated 2010 - 2011.

In no event shall the U.S. Army Corps of Engineers, Charleston District Office, Spatial Data Branch be liable for direct, indirect, incidental, consequential or special damages of any kind, including, but not limited to, loss of anticipated profits or benefits arising out of use of or reliance on the data.

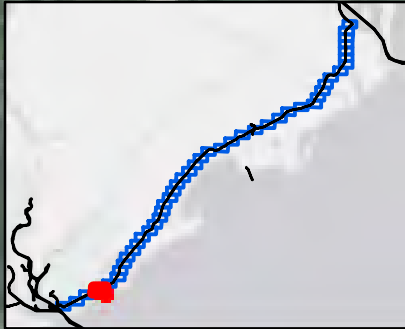
These data sets have been developed from the best available sources. Although efforts have been made to ensure that the datasets are accurate and reliable, errors and variable conditions originating from physical sources used to develop the data may be reflected in the data supplied.

This product is not intended to be used for navigation.
Mariners are encouraged to use all prudent safety measures.



2370000 2371000 2372000 2373000 2374000 2375000 2376000 2377000

79°47'30"W 79°47'00"W 79°46'30"W



2370000 2371000 2372000 2373000 2374000 2375000 2376000 2377000

79°47'30"W 79°47'00"W 79°46'30"W

SHEET
REFERENCE
NUMBER
C003
Page 43 of 46

**Atlantic Intercoastal Waterway (AIWW)
Channel Survey**
The information depicted on this map represents the
results of surveys made on the dates indicated and
can only be considered as indicating the general
conditions existing at that time.
Concluded on: **04 NOV 2015**
Charleston, SC to Port Royal, SC

U.S. ARMY ENGINEER DISTRICT
CORPS OF ENGINEERS
CHARLESTON, SOUTH CAROLINA
SPATIAL DATA BRANCH
69A HAGOOD AVE
CHARLESTON, SC 29403
CESAC-GIS@USACE.ARMY.MIL

Designed By:
eHydro Software v3.82
Reviewed By:
M. BOLES
Reference Scale:
1 inch = 500 feet
Projection:
NAD 1983 StatePlane South Carolina FIPS 3900 Feet

Survey Date:
dd MMM yyyy
20 NOV 2015
Project Reference Number:
CESAC-PRA-0001
Survey Type:
CONDITION

Shoalest Sounding
Sounding may cover several
point areas and is calculated
per reach quarter area
"±" indicates sounding above MLLW

USCG Beacon
Green
Red
White

USCG Buoy
Green
Red
Coast Guard Racon

White
Yellow
USCG Light

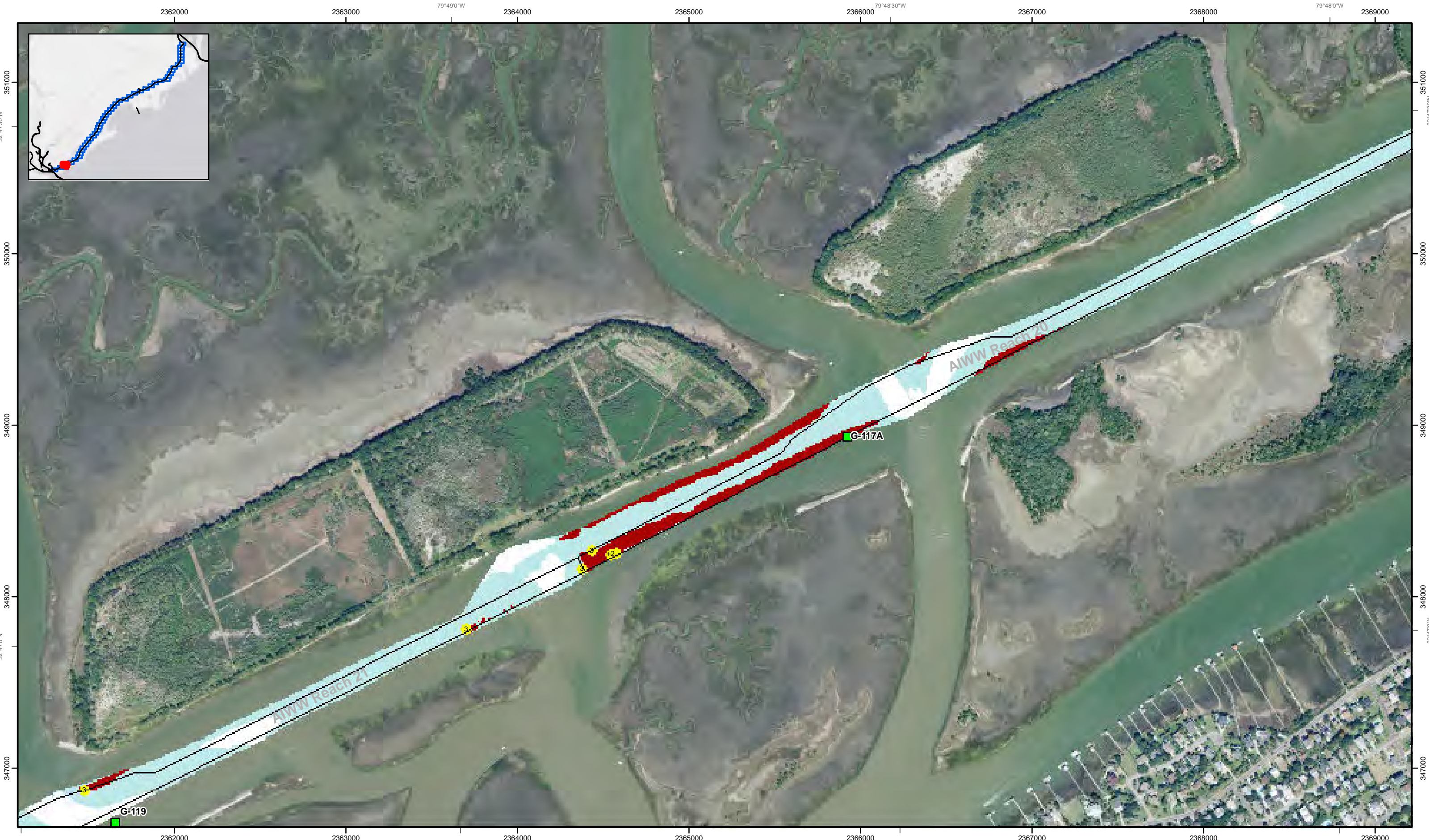
Depth in feet
Less than 3
3 to 12
Greater than 12



Production Notes:
1. The information depicted on this
product is for plotting purposes only
2. Vector hydrographic data derived
from surveys conducted by the
USACE and approved partners
3. Soundings are in feet and refer
to Mean Lower Low Water (MLLW)
4. Raster Background: ArcGIS Online
Image Basemap dated 2010 - 2011
This product is not intended to be used for navigation.
Mariners are encouraged to use all prudent safety measures.

In no event shall the U.S. Army Corps of Engineers, Charleston
District Office, Spatial Data Branch be liable for direct, indirect,
incidental, consequential or special damages of any kind, including,
but not limited to, loss of anticipated profits or benefits arising out of
use of or reliance on the data.
These data sets have been developed from the best available
sources. Although efforts have been made to ensure that the
datasets are accurate and reliable, errors and variable conditions
originating from physical sources used to develop the data may be
reflected in the data supplied.





79°49'30"W
347000
348000
349000
350000
351000
32°47'30"N

2362000 2363000 2364000 2365000 2366000 2367000 2368000 2369000
79°49'0"W 79°48'30"W

SHEET
REFERENCE
NUMBER
C003
Page 44 of 46

**Atlantic Intercoastal Waterway (AIWW)
Channel Survey**
The information depicted on this map represents the results of surveys made on the dates indicated and can only be considered as indicating the general conditions existing at that time.
Concluded on: **04 NOV 2015**
Charleston, SC to Port Royal, SC

U.S. ARMY ENGINEER DISTRICT
CORPS OF ENGINEERS
CHARLESTON, SOUTH CAROLINA
SPATIAL DATA BRANCH
69A HAGOOD AVE
CHARLESTON, SC 29403
CESAC-GIS@USACE.ARMY.MIL

Designed By:
eHydro Software v3.82
Reviewed By:
M. BOLES
Reference Scale:
1 inch = 500 feet
Projection:
NAD 1983 StatePlane South Carolina FIPS 3900 Feet

Survey Date:
dd MMM yyyy
Production Date:
20 NOV 2015
Project Reference Number:
CESAC-PRA-0001
Survey Type:
CONDITION

Shoalest Sounding
Sounding may cover several point areas and is calculated per reach quarter area
"+ " indicates sounding above MLLW

USCG Beacon
Green
Red
White

USCG Buoy
Green
Red
Coast Guard Racon

White
Yellow
USCG Light

Depth in feet
Less than 3
3 to 12
Greater than 12



Production Notes:
1. The information depicted on this product is for plotting purposes only.
2. Vector hydrographic data derived from surveys conducted by the USACE and approved partners.
3. Soundings are in feet and refer to Mean Lower Low Water (MLLW).
4. Raster Background: ArcGIS Online Image Basemap dated 2010 - 2011.
This product is not intended to be used for navigation.
Mariners are encouraged to use all prudent safety measures.



2355000 2356000 2357000 2358000 2359000 2360000 2361000 2362000 79°50'0"W 79°49'30"W



SHEET REFERENCE NUMBER
C003
Page 45 of 46

Atlantic Intercoastal Waterway (AIWW) Channel Survey
The information depicted on this map represents the results of surveys made on the dates indicated and can only be considered as indicating the general conditions existing at that time.
Concluded on: **04 NOV 2015**
Charleston, SC to Port Royal, SC

U.S. ARMY ENGINEER DISTRICT CORPS OF ENGINEERS CHARLESTON, SOUTH CAROLINA	Designed By: eHydro Software v3.82	Survey Date: dd MMM yyyy 20 NOV 2015	Production Date: 20 NOV 2015
SPATIAL DATA BRANCH 69A HAGOOD AVE CHARLESTON, SC 29403 CESAC-GIS@USACE.ARMY.MIL	Reviewed By: M. BOLES	Absolute Scale: 1:6,000	Project Reference Number: CESAC-PRA-0001
	Reference Scale: 1 inch = 500 feet	Survey Type: CONDITION	
	Projection: NAD 1983 StatePlane South Carolina FIPS 3900 Feet		

Shoalest Sounding
● Sounding
Sounding may cover several point areas and is calculated per reach quarter area
"±" indicates sounding above MLLW

USCG Beacon
■ Green
▲ Red
□ White

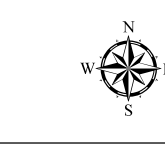
USCG Buoy
● Green
● Red
● Coast Guard Racon

○ White
○ Yellow
○ USCG Light

Depth in feet

■ Less than 3 ■ 3 to 12 ■ Greater than 12

0 250 500 1,000 1,500 Feet



Production Notes:

- The information depicted on this product is for plotting purposes only.
- Vector hydrographic data derived from surveys conducted by the USACE and approved partners.
- Soundings are in feet and refer to Mean Lower Low Water (MLLW).
- Raster Background: ArcGIS Online Image Basemap dated 2010 - 2011.

In no event shall the U.S. Army Corps of Engineers, Charleston District Office, Spatial Data Branch be liable for direct, indirect, incidental, consequential or special damages of any kind, including, but not limited to, loss of anticipated profits or benefits arising out of use of or reliance on the data.

These data sets have been developed from the best available sources. Although efforts have been made to ensure that the datasets are accurate and reliable, errors and variable conditions originating from physical sources used to develop the data may be reflected in the data supplied.

This product is not intended to be used for navigation.
Mariners are encouraged to use all prudent safety measures.



32°46'30"N

344000

343000

347000

346000

345000

344000

343000

342000

341000

340000

32°46'30"N

344000

343000

347000

346000

345000

344000

343000

342000

341000

340000

2347000 2348000 2349000 2350000 2351000 2352000 2353000 2354000
 79°52'0"W 79°51'30"W 79°51'0"W



340000 341000 342000 343000
 32°46'0"N

Atlantic Intercoastal Waterway (AIWW) Channel Survey
 The information depicted on this map represents the results of surveys made on the dates indicated and can only be considered as indicating the general conditions existing at that time.
 Concluded on: **04 NOV 2015**
 Charleston, SC to Port Royal, SC

U.S. ARMY ENGINEER DISTRICT
 CORPS OF ENGINEERS
 CHARLESTON, SOUTH CAROLINA

SPATIAL DATA BRANCH
 69A HAGOOD AVE
 CHARLESTON, SC 29403
 CESAC-GIS@USACE.ARMY.MIL

Designed By: eHydro Software v3.82
 Reviewed By: M. BOLES
 Reference Scale: 1 inch = 500 feet
 Projection: NAD 1983 StatePlane South Carolina FIPS 3900 Feet

Survey Date: dd MMM yyyy
 20 NOV 2015
 Project Reference Number: CESAC-PRA-0001
 Survey Type: CONDITION

Shoalest Sounding
 Sounding may cover several point areas and is calculated per reach quarter area
 "+" indicates sounding above MLLW

USCG Beacon
 Green
 Red

USCG Buoy
 Green
 Red
 Coast Guard Racon

White
 Yellow
 USCG Light

Depth in feet
 Less than 3
 3 to 12
 Greater than 12

0 250 500 1,000 1,500 Feet

Production Notes:
 1. The information depicted on this product is for plotting purposes only.
 2. Vector hydrographic data derived from surveys conducted by the USACE and approved partners.
 3. Soundings are in feet and refer to Mean Lower Low Water (MLLW).
 4. Raster Background: ArcGIS Online Image Basemap dated 2010 - 2011.
 In no event shall the U.S. Army Corps of Engineers, Charleston District Office, Spatial Data Branch be liable for direct, indirect, incidental, consequential or special damages of any kind, including, but not limited to, loss of anticipated profits or benefits arising out of use of or reliance on the data.
 These data sets have been developed from the best available sources. Although efforts have been made to ensure that the datasets are accurate and reliable, errors and variable conditions originating from physical sources used to develop the data may be reflected in the data supplied.
 This product is not intended to be used for navigation.
 Mariners are encouraged to use all prudent safety measures.

U.S. Army Corps of Engineers
 Charleston District

2347000 2348000 2349000 2350000 2351000 2352000 2353000 2354000
 79°52'0"W 79°51'30"W 79°51'0"W