

SHEET REFERENCE NUMBER C003 Page 1 of 39	Atlantic Intracoastal Waterway (AIWW) Channel Survey The information depicted on this map represents the results of surveys made on the dates indicated and can only be considered as indicating the general conditions existing at that time. Concluded on: 10 OCT 2017 Charleston, SC to Port Royal, SC	U.S. ARMY ENGINEER DISTRICT CORPS OF ENGINEERS CHARLESTON, SOUTH CAROLINA SPATIAL DATA BRANCH 69A HAGOOD AVE CHARLESTON, SC 29403 CESAC-GIS@USACE.ARMY.MIL	Designed By: eHydro Software v3.82 Reviewed By: CCW Reference Scale: 1 inch = 500 feet Projection: NAD 1983 StatePlane South Carolina FIPS 3900 Feet	Survey Date: 10 OCT 2017 Project Reference Number: CESAC-PRA-0001 Survey Type: CONDITION	Production Date: 12 OCT 2017
---	--	--	---	---	-------------------------------------

Shoalest Sounding ● Sounding <i>Sounding may cover several point areas and is calculated per reach quarter area</i> *+ indicates sounding above MLLW	USCG Beacon ■ Green ▲ Red □ White	USCG Buoy ● Green ● Red ● Coast Guard Racon	White Yellow USCG Light	Depth in feet 0-3 3 to 6 6 to 9 9 to 12 Greater Than 12 0 250 500 1,000 1,500 Feet
--	---	---	-------------------------------	---

	Production Notes: 1. The information depicted on this product is for plotting purposes only. 2. Vector hydrographic data derived from surveys conducted by the USACE and approved partners. 3. Soundings are in feet and refer to Mean Lower Low Water (MLLW). 4. Raster Background: ArcGIS Online Image Basemap dated 2010 - 2011. In no event shall the U.S. Army Corps of Engineers, Charleston District Office, Spatial Data Branch be liable for direct, indirect, incidental, consequential or special damages of any kind, including, but not limited to, loss of anticipated profits or benefits arising out of use of or reliance on the data. These data sets have been developed from the best available sources. Although efforts have been made to ensure that the datasets are accurate and reliable, errors and variable conditions originating from physical sources used to develop the data may be reflected in the data supplied. This product is not intended to be used for navigation. Mariners are encouraged to use all prudent safety measures.	 U.S. Army Corps of Engineers Charleston District
--	---	---

33°13'30"N 511000 512000 513000 514000 515000 516000 517000 518000



33°13'30"N 511000 512000 513000 514000 515000 516000 517000 518000

Atlantic Intercoastal Waterway (AIWW) Channel Survey
 The information depicted on this map represents the results of surveys made on the dates indicated and can only be considered as indicating the general conditions existing at that time.
 Concluded on: **10 OCT 2017**
 Charleston, SC to Port Royal, SC

U.S. ARMY ENGINEER DISTRICT
 CORPS OF ENGINEERS
 CHARLESTON, SOUTH CAROLINA
 SPATIAL DATA BRANCH
 69A HAGOOD AVE
 CHARLESTON, SC 29403
 CESAC-GIS@USACE.ARMY.MIL

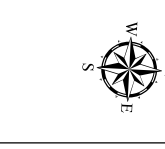
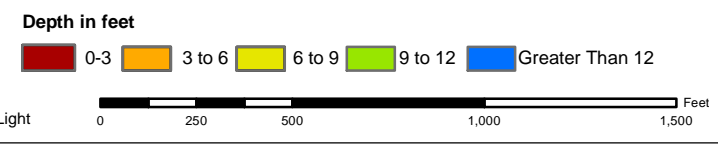
Designed By: eHydro Software v3.82	Survey Date: 10 OCT 2017	Production Date: 12 OCT 2017
Reviewed By: CCW	Absolute Scale: 1:6,000	Project Reference Number: CESAC-PRA-0001
Reference Scale: 1 inch = 500 feet	Survey Type: CONDITION	
Projection: NAD 1983 StatePlane South Carolina FIPS 3900 Feet		

Shoalest Sounding
 ● Sounding
 Sounding may cover several point areas and is calculated per reach quarter area
 "+" indicates sounding above MLLW

USCG Beacon
 ● Green
 ● Red
 ● White

USCG Buoy
 ● Green
 ● Red
 ● Coast Guard Racon

● White
 ● Yellow
 ● USCG Light



Production Notes:

- The information depicted on this product is for plotting purposes only.
- Vector hydrographic data derived from surveys conducted by the USACE and approved partners.
- Soundings are in feet and refer to Mean Lower Low Water (MLLW).
- Raster Background: ArcGIS Online Image Basemap dated 2010 - 2011.

In no event shall the U.S. Army Corps of Engineers, Charleston District Office, Spatial Data Branch be liable for direct, indirect, incidental, consequential or special damages of any kind, including, but not limited to, loss of anticipated profits or benefits arising out of use of or reliance on the data.
 These data sets have been developed from the best available sources. Although efforts have been made to ensure that the datasets are accurate and reliable, errors and variable conditions originating from physical sources used to develop the data may be reflected in the data supplied.
This product is not intended to be used for navigation.
 Mariners are encouraged to use all prudent safety measures.



79°16'30"W 2530000
 SHEET REFERENCE NUMBER C003
 Page 2 of 39

2527000 2528000 2529000 2530000



504000 505000 506000 507000 508000 509000 510000 511000

33°12'30"N 33°13'0"N 33°13'30"N

2527000 2528000 2529000 2530000 2531000

79°16'30"W 79°16'00"W 79°15'30"W

504000 2531000 505000 506000 507000 508000 509000 510000 511000

33°12'30"N 33°13'0"N 33°13'30"N

SHEET
REFERENCE
NUMBER
C003
Page 3 of 39

**Atlantic Intercoastal Waterway (AIWW)
Channel Survey**
The information depicted on this map represents the results of surveys made on the dates indicated and can only be considered as indicating the general conditions existing at that time.
Concluded on: **10 OCT 2017**
Charleston, SC to Port Royal, SC

U.S. ARMY ENGINEER DISTRICT
CORPS OF ENGINEERS
CHARLESTON, SOUTH CAROLINA

SPATIAL DATA BRANCH
69A HAGOOD AVE
CHARLESTON, SC 29403
CESAC-GIS@USACE.ARMY.MIL

Designed By: eHydro Software v3.8.2	Survey Date: 10 OCT 2017	Production Date: 12 OCT 2017
Reviewed By: CCW	Absolute Scale: 1:6,000	Project Reference Number: CESAC-PRA-0001
Reference Scale: 1 inch = 500 feet	Survey Type: CONDITION	
Projection: NAD 1983 StatePlane South Carolina FIPS 3900 Feet		

Shoalest Sounding
Sounding may cover several point areas and is calculated per reach quarter area
"±" indicates sounding above MLLW

● Sounding
■ Green
■ Red
■ White

USCG Beacon
● Green
● Red
● White

USCG Buoy
● Green
● Red
● Coast Guard Racon

USCG Light
● White
● Yellow

Depth in feet

0-3	3 to 6	6 to 9	9 to 12	Greater Than 12
-----	--------	--------	---------	-----------------

0 250 500 1,000 1,500 Feet



Production Notes:
 1. The information depicted on this product is for plotting purposes only.
 2. Vector hydrographic data derived from surveys conducted by the USACE and approved partners.
 3. Soundings are in feet and refer to Mean Lower Low Water (MLLW).
 4. Raster Background: ArcGIS Online Image Basemap dated 2010 - 2011.
 This product is not intended to be used for navigation.
 Mariners are encouraged to use all prudent safety measures.

In no event shall the U.S. Army Corps of Engineers, Charleston District Office, Spatial Data Branch be liable for direct, indirect, incidental, consequential or special damages of any kind, including, but not limited to, loss of anticipated profits or benefits arising out of use of or reliance on the data.
 These data sets have been developed from the best available sources. Although efforts have been made to ensure that the datasets are accurate and reliable, errors and variable conditions originating from physical sources used to develop the data may be reflected in the data supplied.
 This product is not intended to be used for navigation.
 Mariners are encouraged to use all prudent safety measures.



2525000 498000 33°11'30"N 499000 500000 501000 2526000 33°12'0"N 502000 503000 504000 33°12'30"N



79°17'0"W 2525000 2526000 2527000 2528000 2529000 2530000 79°16'30"W 496000 497000 498000 499000 500000 501000 502000 503000 504000 79°16'0"W 2531000



SHEET
REFERENCE
NUMBER
C003
Page 4 of 39

**Atlantic Intercoastal Waterway (AIWW)
Channel Survey**
The information depicted on this map represents the results of surveys made on the dates indicated and can only be considered as indicating the general conditions existing at that time.
Concluded on: **10 OCT 2017**
Charleston, SC to Port Royal, SC

U.S. ARMY ENGINEER DISTRICT
CORPS OF ENGINEERS
CHARLESTON, SOUTH CAROLINA
SPATIAL DATA BRANCH
69A HAGOOD AVE
CHARLESTON, SC 29403
CESAC-GIS@USACE.ARMY.MIL

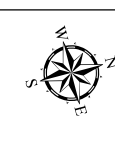
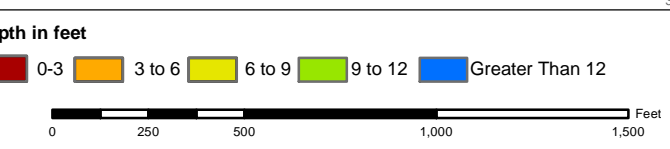
Designed By: eHydro Software v3.82	Survey Date: 10 OCT 2017	Production Date: 12 OCT 2017
Reviewed By: CCW	Absolute Scale: 1:6,000	Project Reference Number: CESAC-PRA-0001
Reference Scale: 1 inch = 500 feet	Survey Type: CONDITION	
Projection: NAD 1983 StatePlane South Carolina FIPS 3900 Feet		

Shoalest Sounding
● Sounding
Sounding may cover several point areas and is calculated per reach quarter area
"±" indicates sounding above MLLW

USCG Beacon
■ Green
▲ Red
□ White

USCG Buoy
● Green
● Red
● Coast Guard Racon

○ White
○ Yellow
○ USCG Light

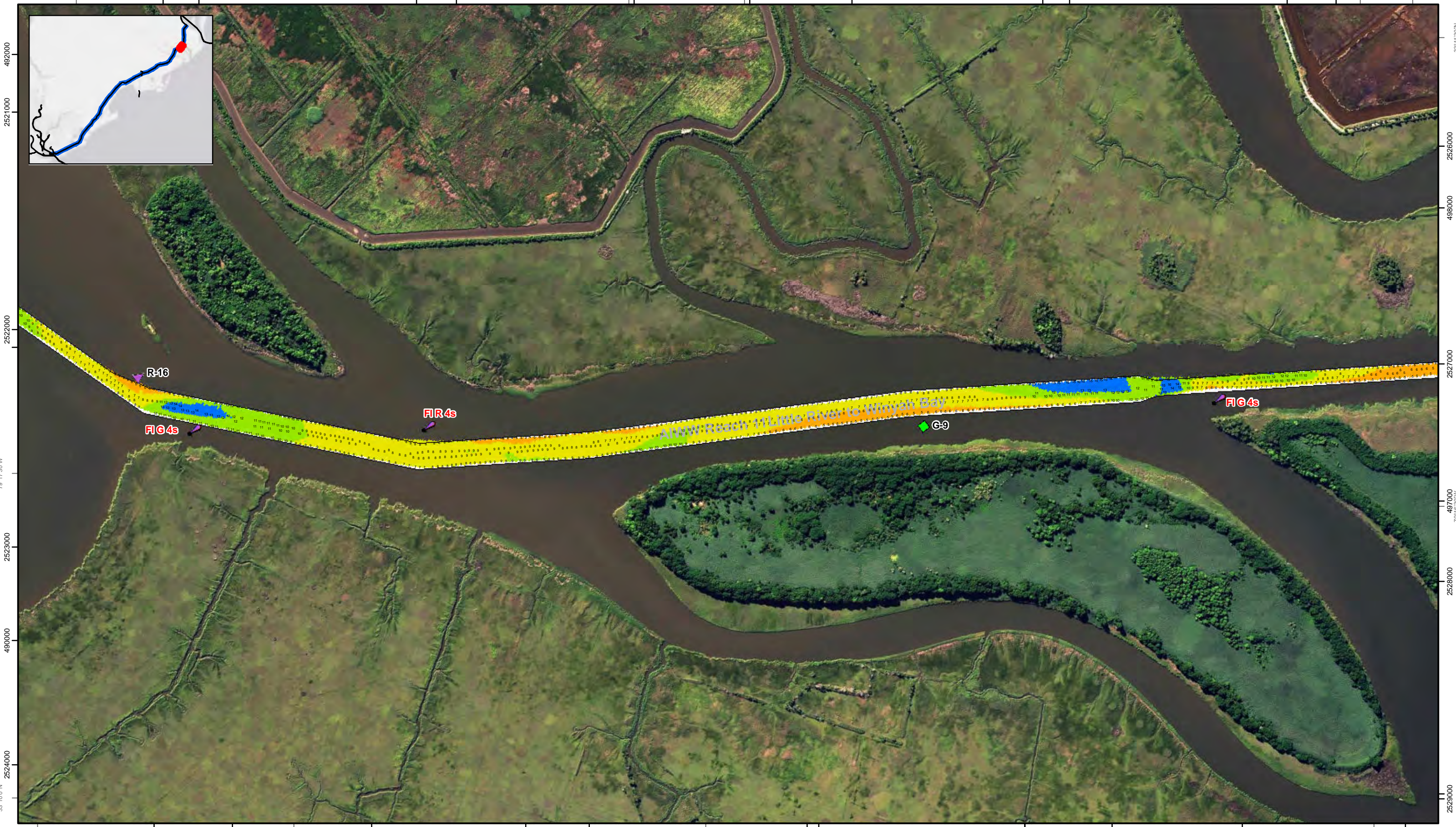


Production Notes:
1. The information depicted on this product is for plotting purposes only.
2. Vector hydrographic data derived from surveys conducted by the USACE and approved partners.
3. Soundings are in feet and refer to Mean Lower Low Water (MLLW).
4. Raster Background: ArcGIS Online Image Basemap dated 2010 - 2011.

In no event shall the U.S. Army Corps of Engineers, Charleston District Office, Spatial Data Branch be liable for direct, indirect, incidental, consequential or special damages of any kind, including, but not limited to, loss of anticipated profits or benefits arising out of use of or reliance on the data.
These data sets have been developed from the best available sources. Although efforts have been made to ensure that the datasets are accurate and reliable, errors and variable conditions originating from physical sources used to develop the data may be reflected in the data supplied.
This product is not intended to be used for navigation.
Mariners are encouraged to use all prudent safety measures.



33°10'30"N 2521000 493000 494000 2522000 79°17'30"W 495000 33°11'0"N 2523000 496000 2524000 497000 498000 2525000 79°17'0"W 33°11'30"N



33°10'0"N 490000 2525000 79°17'30"W 491000 2526000 492000 33°10'30"N 2527000 494000 2528000 495000 33°11'0"N 2529000

Atlantic Intercoastal Waterway (AIWW) Channel Survey
 The information depicted on this map represents the results of surveys made on the dates indicated and can only be considered as indicating the general conditions existing at that time.
 Concluded on: **10 OCT 2017**
 Charleston, SC to Port Royal, SC

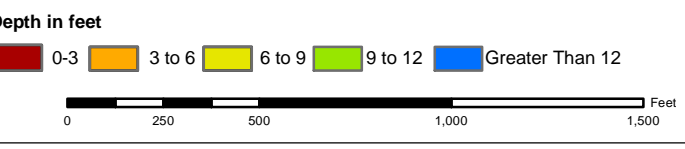
U.S. ARMY ENGINEER DISTRICT CORPS OF ENGINEERS CHARLESTON, SOUTH CAROLINA	Designed By: eHydro Software v3.82	Survey Date: 10 OCT 2017	Production Date: 12 OCT 2017
SPATIAL DATA BRANCH 69A HAGOOD AVE CHARLESTON, SC 29403	Reviewed By: CCW	Absolute Scale: 1:6,000	Project Reference Number: CESAC-PRA-0001
CESAC-GIS@USACE.ARMY.MIL	Reference Scale: 1 inch = 500 feet	Survey Type: CONDITION	
	Projection: NAD 1983 StatePlane South Carolina FIPS 3900 Feet		

Shoalest Sounding
 Sounding may cover several point areas and is calculated per reach quarter area
 "+" indicates sounding above MLLW

USCG Beacon
 Green
 Red
 White

USCG Buoy
 Green
 Red
 Coast Guard Racon

White
 Yellow
 USCG Light



Production Notes:

- The information depicted on this product is for plotting purposes only.
- Vector hydrographic data derived from surveys conducted by the USACE and approved partners.
- Soundings are in feet and refer to Mean Lower Low Water (MLLW).
- Raster Background: ArcGIS Online Image Basemap dated 2010 - 2011.

In no event shall the U.S. Army Corps of Engineers, Charleston District Office, Spatial Data Branch be liable for direct, indirect, incidental, consequential or special damages of any kind, including, but not limited to, loss of anticipated profits or benefits arising out of use of or reliance on the data.

These data sets have been developed from the best available sources. Although efforts have been made to ensure that the datasets are accurate and reliable, errors and variable conditions originating from physical sources used to develop the data may be reflected in the data supplied.

This product is not intended to be used for navigation.
 Mariners are encouraged to use all prudent safety measures.



79°19'0"W 2515000 2516000 492000 2517000 79°18'30"W 2518000 493000 2519000 79°18'0"W 2520000 494000 2521000



Atlantic Intercoastal Waterway (AIWW) Channel Survey
 The information depicted on this map represents the results of surveys made on the dates indicated and can only be considered as indicating the general conditions existing at that time.
 Concluded on: **10 OCT 2017**
 Charleston, SC to Port Royal, SC

U.S. ARMY ENGINEER DISTRICT
 CORPS OF ENGINEERS
 CHARLESTON, SOUTH CAROLINA
 SPATIAL DATA BRANCH
 69A HAGOOD AVE
 CHARLESTON, SC 29403
 CESAC-GIS@USACE.ARMY.MIL

Designed By: eHydro Software v3.82	Survey Date: 10 OCT 2017	Production Date: 12 OCT 2017
Reviewed By: CCW	Absolute Scale: 1:6,000	Project Reference Number: CESAC-PRA-0001
Reference Scale: 1 inch = 500 feet	Survey Type: CONDITION	
Projection: NAD 1983 StatePlane South Carolina FIPS 3900 Feet		

Shoalest Sounding
 Sounding may cover several point areas and is calculated per reach quarter area
 "+" indicates sounding above MLLW

USCG Beacon
 Green
 Red
 White

USCG Buoy
 Green
 Red
 Coast Guard Racon

USCG Light
 White
 Yellow

Depth in feet
 0-3
 3 to 6
 6 to 9
 9 to 12
 Greater Than 12



Production Notes:
 1. The information depicted on this product is for plotting purposes only
 2. Vector hydrographic data derived from surveys conducted by the USACE and approved partners
 3. Soundings are in feet and refer to Mean Lower Low Water (MLLW)
 4. Raster Background: ArcGIS Online Image Basemap dated 2010 - 2011
 In no event shall the U.S. Army Corps of Engineers, Charleston District Office, Spatial Data Branch be liable for direct, indirect, incidental, consequential or special damages of any kind, including, but not limited to, loss of anticipated profits or benefits arising out of use of or reliance on the data.
 These data sets have been developed from the best available sources. Although efforts have been made to ensure that the datasets are accurate and reliable, errors and variable conditions originating from physical sources used to develop the data may be reflected in the data supplied.
 This product is not intended to be used for navigation.
 Mariners are encouraged to use all prudent safety measures.



SHEET
 REFERENCE
 NUMBER
C003
 Page 6 of 39



SHEET REFERENCE NUMBER C003 Page 7 of 39	Atlantic Intercoastal Waterway (AIWW) Channel Survey The information depicted on this map represents the results of surveys made on the dates indicated and can only be considered as indicating the general conditions existing at that time. Concluded on: 10 OCT 2017 Charleston, SC to Port Royal, SC		Designed By: eHydro Software v3.82	Survey Date: 10 OCT 2017	Production Date: 12 OCT 2017	
	U.S. ARMY ENGINEER DISTRICT CORPS OF ENGINEERS CHARLESTON, SOUTH CAROLINA		Reviewed By: CCW	Absolute Scale: 1:6,000	Project Reference Number: CESAC-PRA-0001	
	SPATIAL DATA BRANCH 69A HAGOOD AVE CHARLESTON, SC 29403 CESAC-GIS@USACE.ARMY.MIL		Reference Scale: 1 inch = 500 feet	Survey Type: CONDITION		
	Projection: NAD 1983 StatePlane South Carolina FIPS 3900 Feet					

Shoalest Sounding Sounding <i>Sounding may cover several point areas and is calculated per reach quarter area</i> "+" indicates sounding above MLLW	USCG Beacon Green Red White	USCG Buoy Green Red Coast Guard Racon	White Yellow USCG Light	Depth in feet 0-3 3 to 6 6 to 9 9 to 12 Greater Than 12
---	---	---	-------------------------------	---

Production Notes:

- The information depicted on this product is for plotting purposes only.
- Vector hydrographic data derived from surveys conducted by the USACE and approved partners.
- Soundings are in feet and refer to Mean Lower Low Water (MLLW).
- Raster Background: ArcGIS Online Image Basemap dated 2010 - 2011.

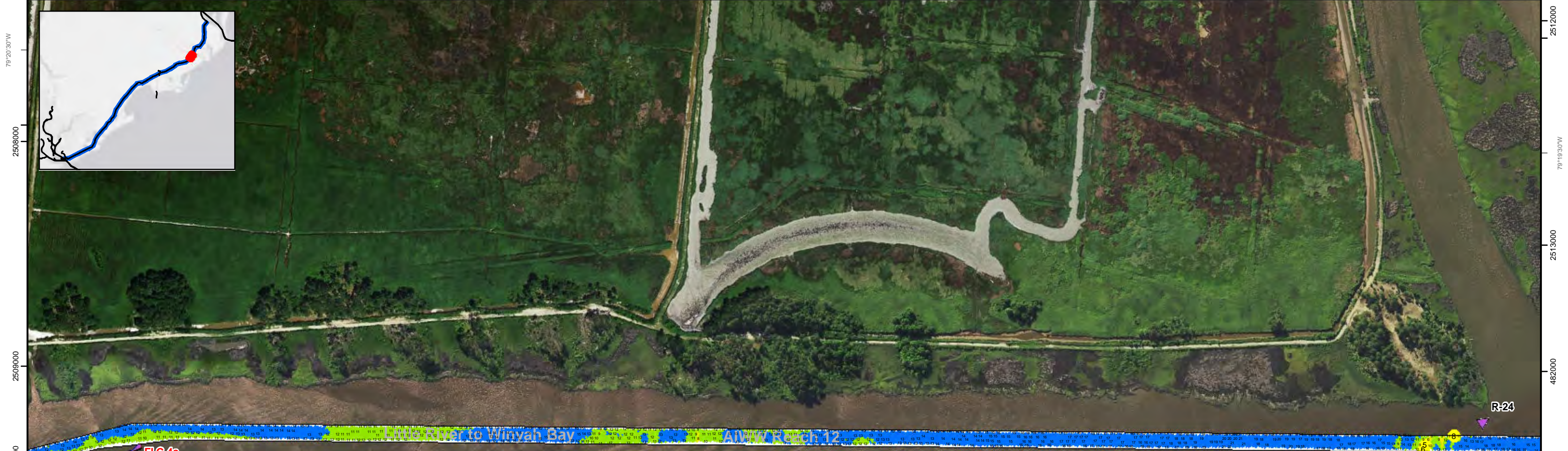
In no event shall the U.S. Army Corps of Engineers, Charleston District Office, Spatial Data Branch be liable for direct, indirect, incidental, consequential or special damages of any kind, including, but not limited to, loss of anticipated profits or benefits arising out of use of or reliance on the data.

These data sets have been developed from the best available sources. Although efforts have been made to ensure that the datasets are accurate and reliable, errors and variable conditions originating from physical sources used to develop the data may be reflected in the data supplied.

This product is not intended to be used for navigation.
Mariners are encouraged to use all prudent safety measures.

U.S. Army Corps of Engineers
Charleston District

79°20'30"W 33°8'0"N 2508000 478000 2509000 479000 480000 33°8'30"N 2510000 79°20'0"W 481000 2511000 482000 483000



474000 33°7'30"N 2512000 475000 79°19'30"W 476000 2513000 477000 33°8'0"N 2514000 478000 479000 2515000 79°19'0"W 480000 33°8'30"N

Atlantic Intercoastal Waterway (AIWW) Channel Survey
 The information depicted on this map represents the results of surveys made on the dates indicated and can only be considered as indicating the general conditions existing at that time.
 Concluded on: **10 OCT 2017**
 Charleston, SC to Port Royal, SC

U.S. ARMY ENGINEER DISTRICT
 CORPS OF ENGINEERS
 CHARLESTON, SOUTH CAROLINA
 SPATIAL DATA BRANCH
 69A HAGOOD AVE
 CHARLESTON, SC 29403
 CESAC-GIS@USACE.ARMY.MIL

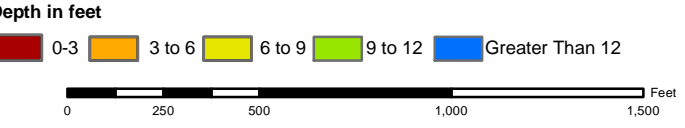
Designed By: eHydro Software v3.82	Survey Date: 10 OCT 2017	Production Date: 12 OCT 2017
Reviewed By: CCW	Absolute Scale: 1:6,000	Project Reference Number: CESAC-PRA-0001
Reference Scale: 1 inch = 500 feet	Survey Type: CONDITION	
Projection: NAD 1983 StatePlane South Carolina FIPS 3900 Feet		

Shoalest Sounding
 ● Sounding
 Sounding may cover several point areas and is calculated per reach quarter area
 "+" indicates sounding above MLLW

USCG Beacon
 ■ Green
 ▲ Red
 □ White

USCG Buoy
 ● Green
 ● Red
 ● Coast Guard Racon

USCG Light
 ● White
 ● Yellow



Production Notes:
 1. The information depicted on this product is for plotting purposes only
 2. Vector hydrographic data derived from surveys conducted by the USACE and approved partners
 3. Soundings are in feet and refer to Mean Lower Low Water (MLLW)
 4. Raster Background: ArcGIS Online Image Basemap dated 2010 - 2011

In no event shall the U.S. Army Corps of Engineers, Charleston District Office, Spatial Data Branch be liable for direct, indirect, incidental, consequential or special damages of any kind, including, but not limited to, loss of anticipated profits or benefits arising out of use of or reliance on the data.
 These data sets have been developed from the best available sources. Although efforts have been made to ensure that the datasets are accurate and reliable, errors and variable conditions originating from physical sources used to develop the data may be reflected in the data supplied.
This product is not intended to be used for navigation.
 Mariners are encouraged to use all prudent safety measures.



U.S. Army Corps of Engineers
 Charleston District

SHEET REFERENCE NUMBER
C003
 Page 8 of 39

472000 2503000 2504000 79°21'0"W 2505000 474000 2506000 475000 2507000 476000 79°20'30"W 2508000 477000 33°8'0"N



U.S. ARMY ENGINEER DISTRICT
CORPS OF ENGINEERS
CHARLESTON, SOUTH CAROLINA

SPATIAL DATA BRANCH
69A HAGOOD AVE
CHARLESTON, SC 29403
CESAC-GIS@USACE.ARMY.MIL

Designed By: eHydro Software v3.82
Reviewed By: CCW
Reference Scale: 1 inch = 500 feet
Projection: NAD 1983 StatePlane South Carolina FIPS 3900 Feet

Survey Date: 10 OCT 2017
Production Date: 12 OCT 2017
Project Reference Number: CESAC-PRA-0001
Survey Type: CONDITION

Shoalest Sounding
Sounding may cover several point areas and is calculated per reach quarter area
"+" indicates sounding above MLLW

USCG Beacon
Green
White

USCG Buoy
Green
Red
Coast Guard Racon

USCG Light
White
Yellow

Depth in feet
0-3 3 to 6 6 to 9 9 to 12 Greater Than 12

0 250 500 1,000 1,500 Feet

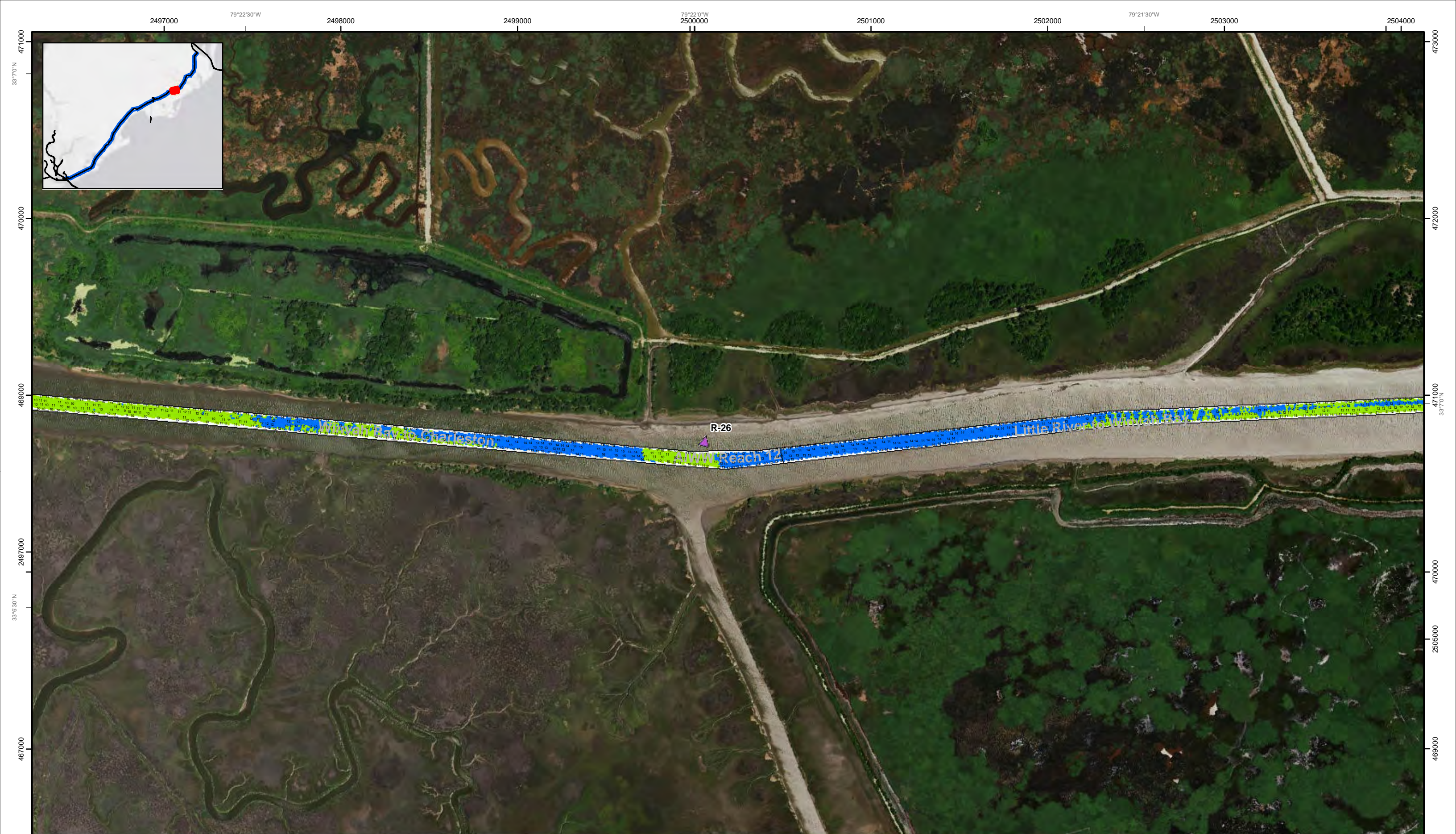
Production Notes:
1. The information depicted on this product is for plotting purposes only.
2. Vector hydrographic data derived from surveys conducted by the USACE and approved partners.
3. Soundings are in feet and refer to Mean Lower Low Water (MLLW).
4. Raster Background: ArcGIS Online Image Basemap dated 2010 - 2011.

In no event shall the U.S. Army Corps of Engineers, Charleston District Office, Spatial Data Branch be liable for direct, indirect, incidental, consequential or special damages of any kind, including, but not limited to, loss of anticipated profits or benefits arising out of use of or reliance on the data.
These data sets have been developed from the best available sources. Although efforts have been made to ensure that the datasets are accurate and reliable, errors and variable conditions originating from physical sources used to develop the data may be reflected in the data supplied.
This product is not intended to be used for navigation.
Mariners are encouraged to use all prudent safety measures.

U.S. Army Corps of Engineers
Charleston District

SHEET REFERENCE NUMBER C003 Page 9 of 39

Atlantic Intercoastal Waterway (AIWW) Channel Survey
The information depicted on this map represents the results of surveys made on the dates indicated and can only be considered as indicating the general conditions existing at that time.
Concluded on: 10 OCT 2017
Charleston, SC to Port Royal, SC



79°22'30\"/>

Atlantic Intercoastal Waterway (AIWW) Channel Survey
 The information depicted on this map represents the results of surveys made on the dates indicated and can only be considered as indicating the general conditions existing at that time.
 Concluded on: **10 OCT 2017**
 Charleston, SC to Port Royal, SC

U.S. ARMY ENGINEER DISTRICT
 CORPS OF ENGINEERS
 CHARLESTON, SOUTH CAROLINA
 SPATIAL DATA BRANCH
 69A HAGOOD AVE
 CHARLESTON, SC 29403
 CESAC-GIS@USACE.ARMY.MIL

Designed By: eHydro Software v3.82	Survey Date: 10 OCT 2017	Production Date: 12 OCT 2017
Reviewed By: CCW	Absolute Scale: 1:6,000	Project Reference Number: CESAC-PRA-0001
Reference Scale: 1 inch = 500 feet	Survey Type: CONDITION	
Projection: NAD 1983 StatePlane South Carolina FIPS 3900 Feet		

Shoalest Sounding
 ● Sounding
 Sounding may cover several point areas and is calculated per reach quarter area
 "+" indicates sounding above MLLW

USCG Beacon
 ■ Green
 ▲ Red
 □ White

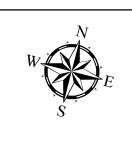
USCG Buoy
 ● Green
 ● Red
 ● Coast Guard Racon

USCG Light
 ● White
 ● Yellow
 ● USCG Light

Depth in feet

0-3	3 to 6	6 to 9	9 to 12	Greater Than 12
-----	--------	--------	---------	-----------------

0 250 500 1,000 1,500 Feet

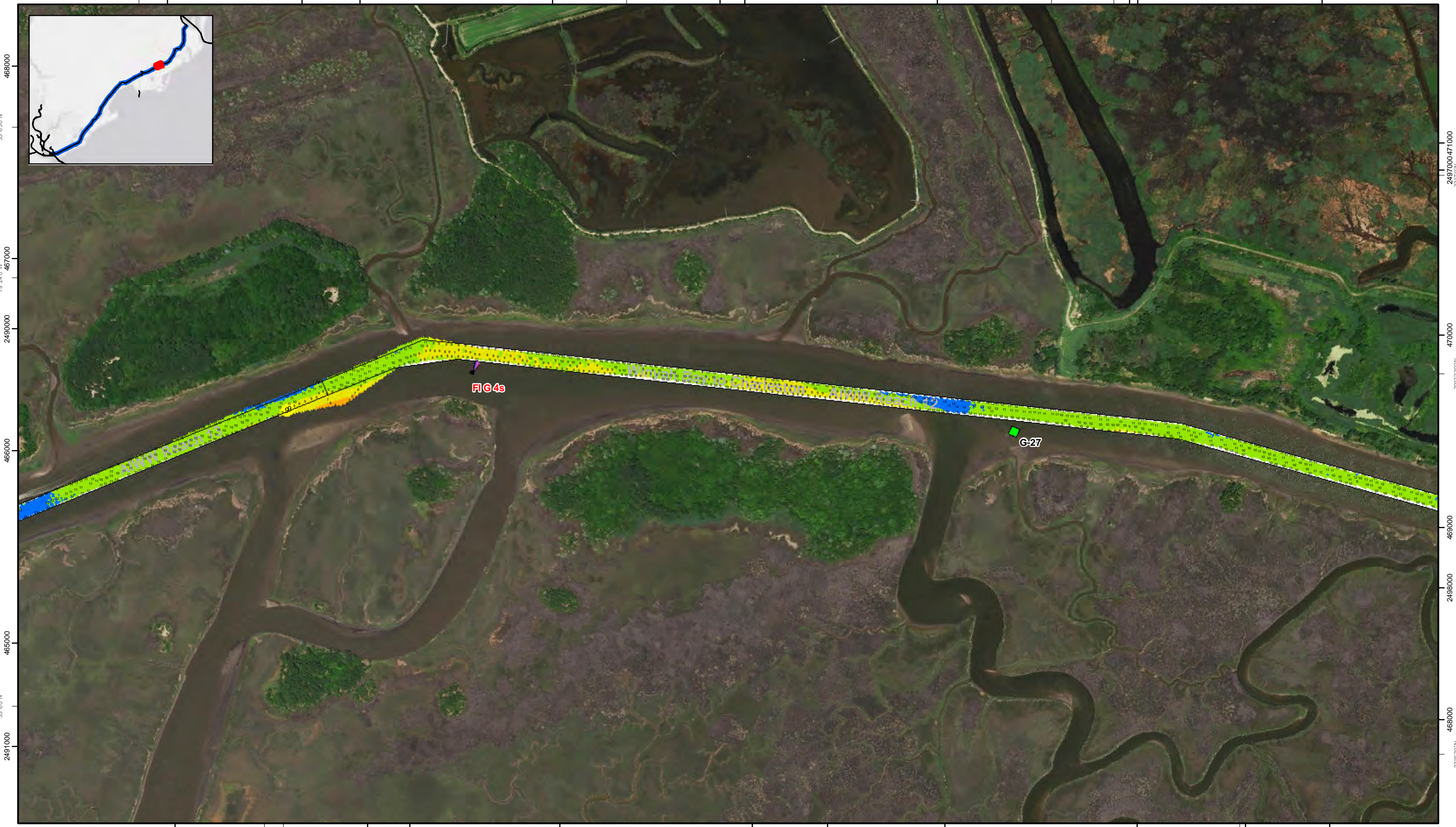


Production Notes:
 1. The information depicted on this product is for plotting purposes only
 2. Vector hydrographic data derived from surveys conducted by the USACE and approved partners
 3. Soundings are in feet and refer to Mean Lower Low Water (MLLW)
 4. Raster Background: ArcGIS Online Image Basemap dated 2010 - 2011
 This product is not intended to be used for navigation.
 Mariners are encouraged to use all prudent safety measures.

In no event shall the U.S. Army Corps of Engineers, Charleston District Office, Spatial Data Branch be liable for direct, indirect, incidental, consequential or special damages of any kind, including, but not limited to, loss of anticipated profits or benefits arising out of use of or reliance on the data.
 These data sets have been developed from the best available sources. Although efforts have been made to ensure that the datasets are accurate and reliable, errors and variable conditions originating from physical sources used to develop the data may be reflected in the data supplied.
 This product is not intended to be used for navigation.
 Mariners are encouraged to use all prudent safety measures.



79°24'0"W 2490000 469000 2491000 2492000 79°23'30"W 470000 2493000 2494000 33°7'0"N 79°23'0"W 2495000 2496000



SHEET REFERENCE NUMBER C003 Page 11 of 39	Atlantic Intercoastal Waterway (AIWW) Channel Survey The information depicted on this map represents the results of surveys made on the dates indicated and can only be considered as indicating the general conditions existing at that time. Concluded on: 10 OCT 2017 Charleston, SC to Port Royal, SC		Designed By: eHydro Software v3.82 Reviewed By: CCW Reference Scale: 1 inch = 500 feet Projection: NAD 1983 StatePlane South Carolina FIPS 3900 Feet	Survey Date: 10 OCT 2017 Project Reference Number: CESAC-PRA-0001 Survey Type: CONDITION	Production Date: 12 OCT 2017
	U.S. ARMY ENGINEER DISTRICT CORPS OF ENGINEERS CHARLESTON, SOUTH CAROLINA		Absolute Scale: 1:6,000	SPATIAL DATA BRANCH 69A HAGOOD AVE CHARLESTON, SC 29403 CESAC-GIS@USACE.ARMY.MIL	

Shoalest Sounding Sounding may cover several point areas and is calculated per reach quarter area "+" indicates sounding above MLLW	USCG Beacon Green Red White	USCG Buoy Green Red Coast Guard Racon	White Yellow USCG Light	Depth in feet 0-3 3 to 6 6 to 9 9 to 12 Greater Than 12
				0 250 500 1,000 1,500 Feet

Production Notes:

- The information depicted on this product is for plotting purposes only
- Vector hydrographic data derived from surveys conducted by the USACE and approved partners
- Soundings are in feet and refer to Mean Lower Low Water (MLLW)
- Raster Background: ArcGIS Online Image Basemap dated 2010 - 2011

In no event shall the U.S. Army Corps of Engineers, Charleston District Office, Spatial Data Branch be liable for direct, indirect, incidental, consequential or special damages of any kind, including, but not limited to, loss of anticipated profits or benefits arising out of use of or reliance on the data.

These data sets have been developed from the best available sources. Although efforts have been made to ensure that the datasets are accurate and reliable, errors and variable conditions originating from physical sources used to develop the data may be reflected in the data supplied.

This product is not intended to be used for navigation. Mariners are encouraged to use all prudent safety measures.



SHEET
REFERENCE
NUMBER
C003
Page 12 of 39

**Atlantic Intercoastal Waterway (AIWW)
Channel Survey**
The information depicted on this map represents the results of surveys made on the dates indicated and can only be considered as indicating the general conditions existing at that time.
Concluded on: **10 OCT 2017**
Charleston, SC to Port Royal, SC

U.S. ARMY ENGINEER DISTRICT
CORPS OF ENGINEERS
CHARLESTON, SOUTH CAROLINA
SPATIAL DATA BRANCH
69A HAGOOD AVE
CHARLESTON, SC 29403
CESAC-GIS@USACE.ARMY.MIL

Designed By: **eHydro Software v3.8.2**
Reviewed By: **CCW**
Reference Scale: **1 inch = 500 feet**
Projection: **NAD 1983 StatePlane South Carolina FIPS 3900 Feet**

Survey Date: **10 OCT 2017**
Production Date: **12 OCT 2017**
Project Reference Number: **CESAC-PRA-0001**
Survey Type: **CONDITION**

Shoalest Sounding
Sounding may cover several point areas and is calculated per reach quarter area
"±" indicates sounding above MLLW

USCG Beacon
Green
Red
White

USCG Buoy
Green
Red
Coast Guard Racon

White
Yellow
USCG Light

Depth in feet
0-3
3 to 6
6 to 9
9 to 12
Greater Than 12



Production Notes:
1. The information depicted on this product is for plotting purposes only.
2. Vector hydrographic data derived from surveys conducted by the USACE and approved partners.
3. Soundings are in feet and refer to Mean Lower Low Water (MLLW).
4. Raster Background: ArcGIS Online Image Basemap dated 2010 - 2011.

In no event shall the U.S. Army Corps of Engineers, Charleston District Office, Spatial Data Branch be liable for direct, indirect, incidental, consequential or special damages of any kind, including, but not limited to, loss of anticipated profits or benefits arising out of use of or reliance on the data.
These data sets have been developed from the best available sources. Although efforts have been made to ensure that the datasets are accurate and reliable, errors and variable conditions originating from physical sources used to develop the data may be reflected in the data supplied.
This product is not intended to be used for navigation.
Mariners are encouraged to use all prudent safety measures.





Atlantic Intercoastal Waterway (AIWW) Channel Survey
 The information depicted on this map represents the results of surveys made on the dates indicated and can only be considered as indicating the general conditions existing at that time.
 Concluded on: **10 OCT 2017**
 Charleston, SC to Port Royal, SC

U.S. ARMY ENGINEER DISTRICT CORPS OF ENGINEERS CHARLESTON, SOUTH CAROLINA	Designed By: eHydro Software v3.82	Survey Date: 10 OCT 2017	Production Date: 12 OCT 2017
SPATIAL DATA BRANCH 69A HAGOOD AVE CHARLESTON, SC 29403 CESAC-GIS@USACE.ARMY.MIL	Reviewed By: CCW	Absolute Scale: 1:6,000	Project Reference Number: CESAC-PRA-0001
	Reference Scale: 1 inch = 500 feet	Survey Type: CONDITION	
	Projection: NAD 1983 StatePlane South Carolina FIPS 3900 Feet		

Shoalest Sounding
 ● Sounding
Sounding may cover several point areas and is calculated per reach quarter area
 "+ " indicates sounding above MLLW

USCG Beacon
 ● Green
 ▲ Red
 □ White

USCG Buoy
 ● Green
 ● Red
 ● Coast Guard Racon

White
 ● USCG Light

Depth in feet
 0-3 (Red) 3 to 6 (Orange) 6 to 9 (Yellow) 9 to 12 (Green) Greater Than 12 (Blue)

0 250 500 1,000 1,500 Feet

Production Notes:

- The information depicted on this product is for plotting purposes only.
- Vector hydrographic data derived from surveys conducted by the USACE and approved partners.
- Soundings are in feet and refer to Mean Lower Low Water (MLLW).
- Raster Background: ArcGIS Online Image Basemap dated 2010 - 2011.

In no event shall the U.S. Army Corps of Engineers, Charleston District Office, Spatial Data Branch be liable for direct, indirect, incidental, consequential or special damages of any kind, including, but not limited to, loss of anticipated profits or benefits arising out of use of or reliance on the data.

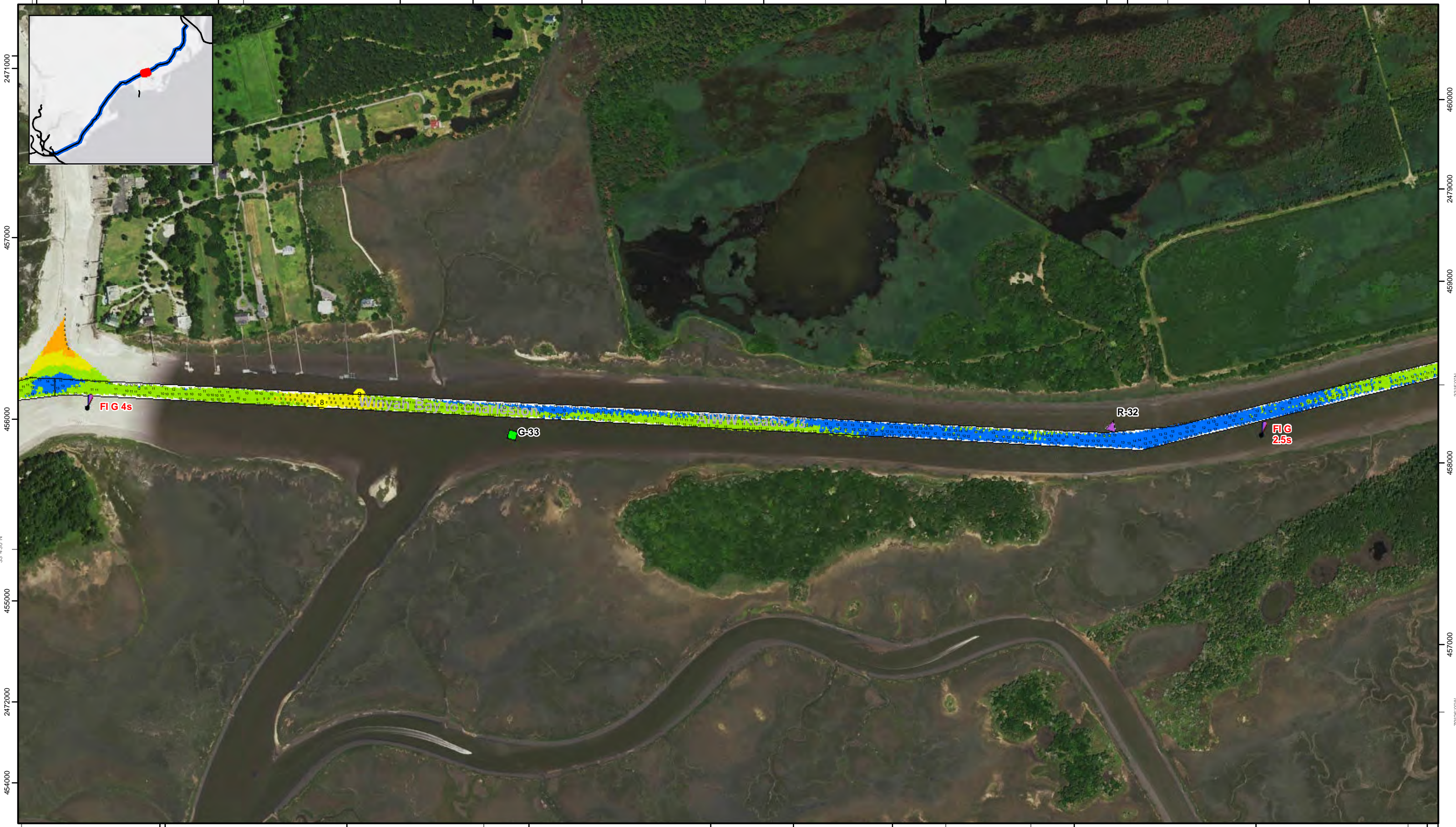
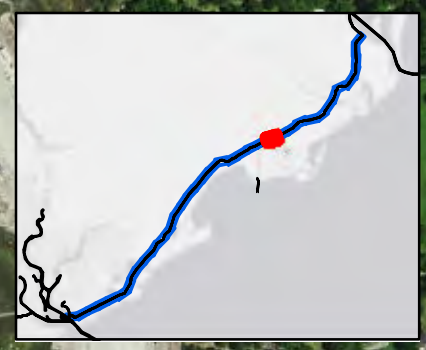
These data sets have been developed from the best available sources. Although efforts have been made to ensure that the datasets are accurate and reliable, errors and variable conditions originating from physical sources used to develop the data may be reflected in the data supplied.

This product is not intended to be used for navigation. Mariners are encouraged to use all prudent safety measures.

U.S. Army Corps of Engineers
Charleston District

SHEET REFERENCE NUMBER
C003
 Page 13 of 39

33°50'N 2471000 79°27'30"W 2472000 2473000 459000 2474000 2475000 79°27'0"W 2476000 2477000 79°26'30"W 2478000



79°27'30"W 2473000 2474000 2475000 2476000 455000 2477000 79°26'30"W 33°4'30"N 2478000 2479000 2480000 79°26'0"W

SHEET
REFERENCE
NUMBER
C003
Page 14 of 39

**Atlantic Intercoastal Waterway (AIWW)
Channel Survey**
The information depicted on this map represents the results of surveys made on the dates indicated and can only be considered as indicating the general conditions existing at that time.
Concluded on: **10 OCT 2017**
Charleston, SC to Port Royal, SC

U.S. ARMY ENGINEER DISTRICT
CORPS OF ENGINEERS
CHARLESTON, SOUTH CAROLINA
SPATIAL DATA BRANCH
69A HAGOOD AVE
CHARLESTON, SC 29403
CESAC-GIS@USACE.ARMY.MIL

Designed By: eHydro Software v3.82	Survey Date: 10 OCT 2017	Production Date: 12 OCT 2017
Reviewed By: CCW	Absolute Scale: 1:6,000	Project Reference Number: CESAC-PRA-0001
Reference Scale: 1 inch = 500 feet	Survey Type: CONDITION	
Projection: NAD 1983 StatePlane South Carolina FIPS 3900 Feet		

Shoalest Sounding
● Sounding
Sounding may cover several point areas and is calculated per reach quarter area
"+ " indicates sounding above MLLW

USCG Beacon
■ Green
▲ Red
□ White

USCG Buoy
● Green
● Red
● Coast Guard Racon

● White
● Yellow
● USCG Light

Depth in feet

0-3	3 to 6	6 to 9	9 to 12	Greater Than 12
-----	--------	--------	---------	-----------------

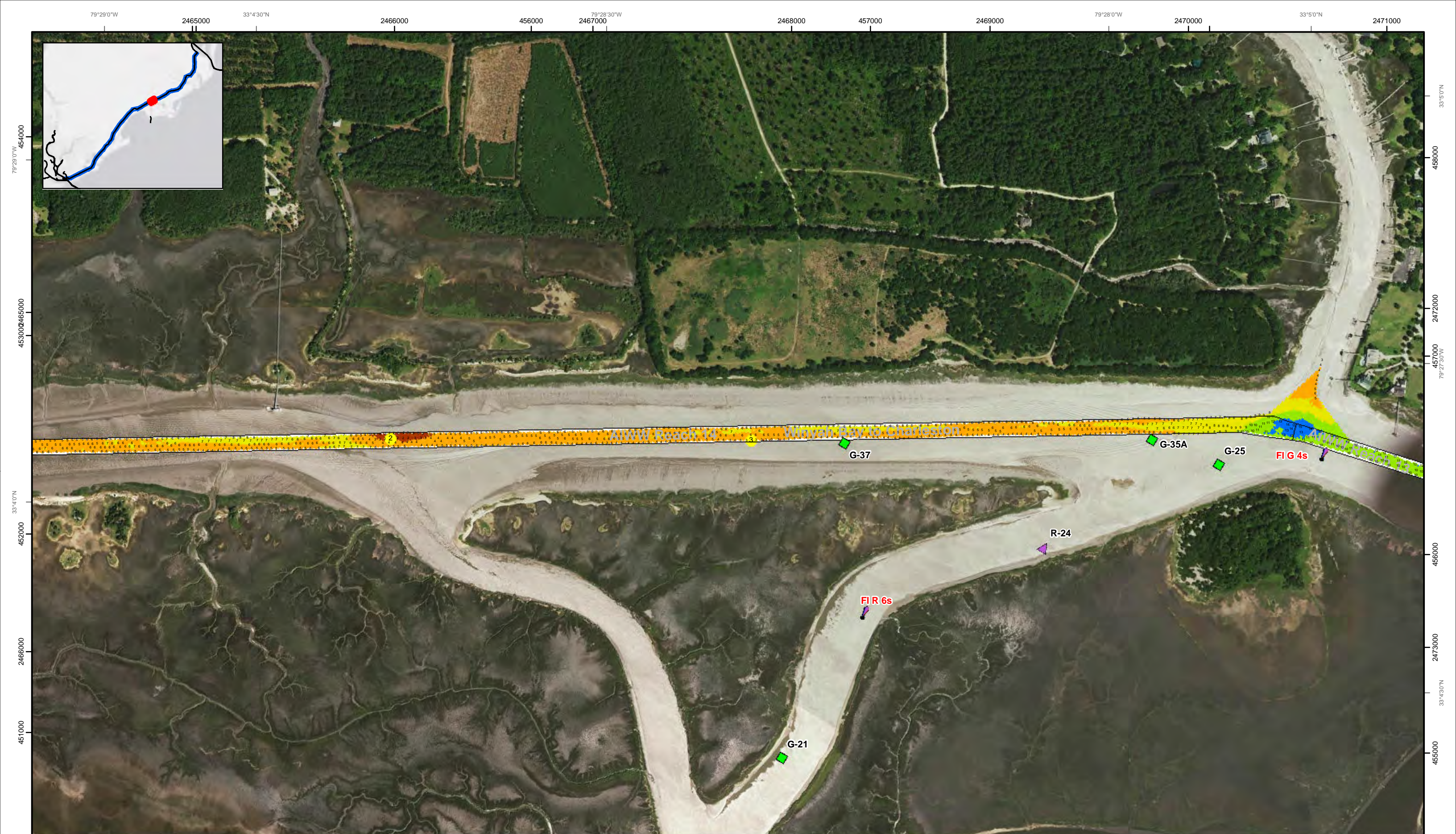
0 250 500 1,000 1,500 Feet



Production Notes:
1. The information depicted on this product is for plotting purposes only.
2. Vector hydrographic data derived from surveys conducted by the USACE and approved partners.
3. Soundings are in feet and refer to Mean Lower Low Water (MLLW).
4. Raster Background: ArcGIS Online Image Basemap dated 2010 - 2011.

In no event shall the U.S. Army Corps of Engineers, Charleston District Office, Spatial Data Branch be liable for direct, indirect, incidental, consequential or special damages of any kind, including, but not limited to, loss of anticipated profits or benefits arising out of use of or reliance on the data.
These data sets have been developed from the best available sources. Although efforts have been made to ensure that the datasets are accurate and reliable, errors and variable conditions originating from physical sources used to develop the data may be reflected in the data supplied.
This product is not intended to be used for navigation.
Mariners are encouraged to use all prudent safety measures.





SHEET
REFERENCE
NUMBER
C003
Page 15 of 39

**Atlantic Intercoastal Waterway (AIWW)
Channel Survey**
The information depicted on this map represents the results of surveys made on the dates indicated and can only be considered as indicating the general conditions existing at that time.
Concluded on: **10 OCT 2017**
Charleston, SC to Port Royal, SC

U.S. ARMY ENGINEER DISTRICT
CORPS OF ENGINEERS
CHARLESTON, SOUTH CAROLINA
SPATIAL DATA BRANCH
69A HAGOOD AVE
CHARLESTON, SC 29403
CESAC-GIS@USACE.ARMY.MIL

Designed By: eHydro Software v3.82	Survey Date: 10 OCT 2017	Production Date: 12 OCT 2017
Reviewed By: CCW	Absolute Scale: 1:6,000	Project Reference Number: CESAC-PRA-0001
Reference Scale: 1 inch = 500 feet	Survey Type: CONDITION	
Projection: NAD 1983 StatePlane South Carolina FIPS 3900 Feet		

Shoalest Sounding
● Sounding
Sounding may cover several point areas and is calculated per reach quarter area
"±" indicates sounding above MLLW

USCG Beacon
■ Green
▲ Red
□ White

USCG Buoy
● Green
● Red
● Coast Guard Racon

○ White
○ Yellow
○ USCG Light

Depth in feet

0-3	3 to 6	6 to 9	9 to 12	Greater Than 12
-----	--------	--------	---------	-----------------

0 250 500 1,000 1,500 Feet



Production Notes:

- The information depicted on this product is for plotting purposes only.
- Vector hydrographic data derived from surveys conducted by the USACE and approved partners.
- Soundings are in feet and refer to Mean Lower Low Water (MLLW).
- Raster Background: ArcGIS Online Image Basemap dated 2010 - 2011.

In no event shall the U.S. Army Corps of Engineers, Charleston District Office, Spatial Data Branch be liable for direct, indirect, incidental, consequential or special damages of any kind, including, but not limited to, loss of anticipated profits or benefits arising out of use of or reliance on the data.

These data sets have been developed from the best available sources. Although efforts have been made to ensure that the datasets are accurate and reliable, errors and variable conditions originating from physical sources used to develop the data may be reflected in the data supplied.

This product is not intended to be used for navigation.
Mariners are encouraged to use all prudent safety measures.



2458000 2459000 452000 33°40'N 79°30'0"W 2460000 2461000 79°29'30"W 2462000 2463000 2464000 79°29'0"W 2465000



SHEET REFERENCE NUMBER C003 Page 16 of 39	Atlantic Intercoastal Waterway (AIWW) Channel Survey The information depicted on this map represents the results of surveys made on the dates indicated and can only be considered as indicating the general conditions existing at that time. Concluded on: 10 OCT 2017 Charleston, SC to Port Royal, SC	Designed By: eHydro Software v3.82 Reviewed By: CCW Reference Scale: 1 inch = 500 feet Projection: NAD 1983 StatePlane South Carolina FIPS 3900 Feet	Survey Date: 10 OCT 2017 Project Reference Number: CESAC-PRA-0001 Survey Type: CONDITION	Production Date: 12 OCT 2017	
	U.S. ARMY ENGINEER DISTRICT CORPS OF ENGINEERS CHARLESTON, SOUTH CAROLINA SPATIAL DATA BRANCH 69A HAGOOD AVE CHARLESTON, SC 29403 CESAC-GIS@USACE.ARMY.MIL	Absolute Scale: 1:6,000	Survey Date: 10 OCT 2017 Project Reference Number: CESAC-PRA-0001 Survey Type: CONDITION	Production Date: 12 OCT 2017	
	Shoalest Sounding Sounding may cover several point areas and is calculated per reach quarter area "+" indicates sounding above MLLW				
	USCG Beacon Green Red White	USCG Buoy Green Red Coast Guard Racon	USCG Light White Yellow	Depth in feet 0-3 3 to 6 6 to 9 9 to 12 Greater Than 12	Production Notes: 1. The information depicted on this product is for plotting purposes only. 2. Vector hydrographic data derived from surveys conducted by the USACE and approved partners. 3. Soundings are in feet and refer to Mean Lower Low Water (MLLW). 4. Raster Background: ArcGIS Online Image Basemap dated 2010 - 2011. In no event shall the U.S. Army Corps of Engineers, Charleston District Office, Spatial Data Branch be liable for direct, indirect, incidental, consequential or special damages of any kind, including, but not limited to, loss of anticipated profits or benefits arising out of use of or reliance on the data. These data sets have been developed from the best available sources. Although efforts have been made to ensure that the datasets are accurate and reliable, errors and variable conditions originating from physical sources used to develop the data may be reflected in the data supplied. This product is not intended to be used for navigation. Mariners are encouraged to use all prudent safety measures.



79°31'30"W 2452000 448000 2453000 2454000 449000 2455000 2456000 79°30'30"W 2457000 451000 2458000



79°31'0"W 2455000 444000 2456000 445000 444000 2454000

Atlantic Intercoastal Waterway (AIWW) Channel Survey
 The information depicted on this map represents the results of surveys made on the dates indicated and can only be considered as indicating the general conditions existing at that time.
 Concluded on: **10 OCT 2017**
 Charleston, SC to Port Royal, SC

U.S. ARMY ENGINEER DISTRICT
 CORPS OF ENGINEERS
 CHARLESTON, SOUTH CAROLINA

SPATIAL DATA BRANCH
 69A HAGOOD AVE
 CHARLESTON, SC 29403
 CESAC-GIS@USACE.ARMY.MIL

Designed By: eHydro Software v3.82	Survey Date: 10 OCT 2017	Production Date: 12 OCT 2017
Reviewed By: CCW	Absolute Scale: 1:6,000	Project Reference Number: CESAC-PRA-0001
Reference Scale: 1 inch = 500 feet	Survey Type: CONDITION	
Projection: NAD 1983 StatePlane South Carolina FIPS 3900 Feet		

Shoalest Sounding
 Sounding may cover several point areas and is calculated per reach quarter area
 "+" indicates sounding above MLLW

USCG Beacon
 Green
 Red

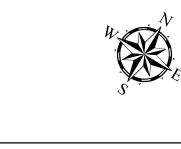
USCG Buoy
 Green
 Red
 Coast Guard Racon

USCG Light
 White
 Yellow

Depth in feet

0-3	3 to 6	6 to 9	9 to 12	Greater Than 12
-----	--------	--------	---------	-----------------

0 250 500 1,000 1,500 Feet



Production Notes:

- The information depicted on this product is for plotting purposes only.
- Vector hydrographic data derived from surveys conducted by the USACE and approved partners.
- Soundings are in feet and refer to Mean Lower Low Water (MLLW).
- Raster Background: ArcGIS Online Image Basemap dated 2010 - 2011.

In no event shall the U.S. Army Corps of Engineers, Charleston District Office, Spatial Data Branch be liable for direct, indirect, incidental, consequential or special damages of any kind, including, but not limited to, loss of anticipated profits or benefits arising out of use of or reliance on the data.

These data sets have been developed from the best available sources. Although efforts have been made to ensure that the datasets are accurate and reliable, errors and variable conditions originating from physical sources used to develop the data may be reflected in the data supplied.

This product is not intended to be used for navigation.
 Mariners are encouraged to use all prudent safety measures.

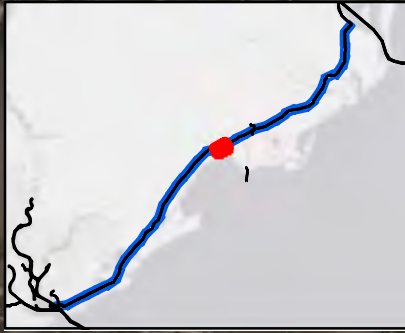


SHEET REFERENCE NUMBER
C003
 Page 17 of 39

79°30'0"W 445000 2453000 2454000 2455000 2456000 2457000 2458000 2460000 2461000

79°30'0"W 449000 448000

2446000 79°32'30"W 2447000 445000 2448000 2449000 79°32'0"W 446000 2450000 2451000 447000 79°31'30"W 2452000



2448000 440000 2449000 79°32'0"W 2450000 441000 2451000 2452000 79°31'30"W 2453000 33°2'30"N 443000 2454000 445000 79°31'0"W 2455000

Atlantic Intercoastal Waterway (AIWW) Channel Survey
 The information depicted on this map represents the results of surveys made on the dates indicated and can only be considered as indicating the general conditions existing at that time.
 Concluded on: **10 OCT 2017**
 Charleston, SC to Port Royal, SC

U.S. ARMY ENGINEER DISTRICT
 CORPS OF ENGINEERS
 CHARLESTON, SOUTH CAROLINA
 SPATIAL DATA BRANCH
 69A HAGOOD AVE
 CHARLESTON, SC 29403
 CESAC-GIS@USACE.ARMY.MIL

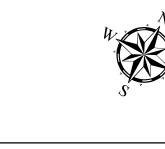
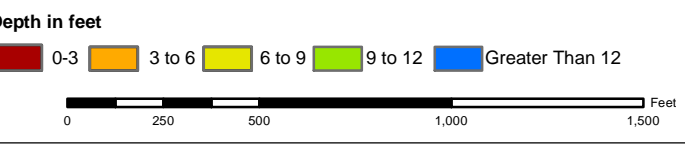
Designed By: eHydro Software v3.82	Survey Date: 10 OCT 2017	Production Date: 12 OCT 2017
Reviewed By: CCW	Absolute Scale: 1:6,000	Project Reference Number: CESAC-PRA-0001
Reference Scale: 1 inch = 500 feet	Survey Type: CONDITION	
Projection: NAD 1983 StatePlane South Carolina FIPS 3900 Feet		

Shoalest Sounding
 Sounding may cover several point areas and is calculated per reach quarter area
 "+" indicates sounding above MLLW

USCG Beacon
 Green
 Red

USCG Buoy
 Green
 Red
 Coast Guard Racon

USCG Light
 White
 Yellow



Production Notes:

- The information depicted on this product is for plotting purposes only.
- Vector hydrographic data derived from surveys conducted by the USACE and approved partners.
- Soundings are in feet and refer to Mean Lower Low Water (MLLW).
- Raster Background: ArcGIS Online Image Basemap dated 2010 - 2011.

In no event shall the U.S. Army Corps of Engineers, Charleston District Office, Spatial Data Branch be liable for direct, indirect, incidental, consequential or special damages of any kind, including, but not limited to, loss of anticipated profits or benefits arising out of use of or reliance on the data.

These data sets have been developed from the best available sources. Although efforts have been made to ensure that the datasets are accurate and reliable, errors and variable conditions originating from physical sources used to develop the data may be reflected in the data supplied.

This product is not intended to be used for navigation. Mariners are encouraged to use all prudent safety measures.



SHEET REFERENCE NUMBER
C003
 Page 18 of 39

79°34'0"W 2440000 2441000 444000 79°33'30"W 2442000 2443000 2444000 79°33'0"W 2445000 2446000 79°32'30"W 2447000



439000 2441000 442000 445000
 33°2'0"N 2440000 443000
 33°2'30"N 442000
 439000 2441000 2442000 2443000 2444000 79°33'0"W 2445000 2446000 2447000 79°32'30"W 2448000

SHEET
 REFERENCE
 NUMBER
C003
 Page 19 of 39

**Atlantic Intercoastal Waterway (AIWW)
 Channel Survey**
 The information depicted on this map represents the results of surveys made on the dates indicated and can only be considered as indicating the general conditions existing at that time.
 Concluded on: **10 OCT 2017**
 Charleston, SC to Port Royal, SC

U.S. ARMY ENGINEER DISTRICT
 CORPS OF ENGINEERS
 CHARLESTON, SOUTH CAROLINA
 SPATIAL DATA BRANCH
 69A HAGOOD AVE
 CHARLESTON, SC 29403
 CESAC-GIS@USACE.ARMY.MIL

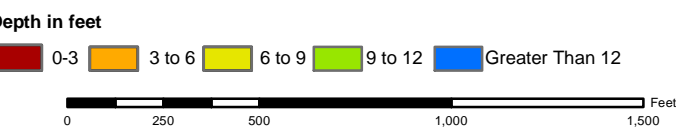
Designed By: eHydro Software v3.82	Survey Date: 10 OCT 2017	Production Date: 12 OCT 2017
Reviewed By: CCW	Absolute Scale: 1:6,000	Project Reference Number: CESAC-PRA-0001
Reference Scale: 1 inch = 500 feet	Survey Type: CONDITION	
Projection: NAD 1983 StatePlane South Carolina FIPS 3900 Feet		

Shoalest Sounding
 Sounding may cover several point areas and is calculated per reach quarter area
 "+" indicates sounding above MLLW

USCG Beacon
 Green
 Red

USCG Buoy
 Green
 Red
 Coast Guard Racon

White
 Yellow
 USCG Light



Production Notes:
 1. The information depicted on this product is for plotting purposes only.
 2. Vector hydrographic data derived from surveys conducted by the USACE and approved partners.
 3. Soundings are in feet and refer to Mean Lower Low Water (MLLW).
 4. Raster Background: ArcGIS Online Image Basemap dated 2010 - 2011.
 In no event shall the U.S. Army Corps of Engineers, Charleston District Office, Spatial Data Branch be liable for direct, indirect, incidental, consequential or special damages of any kind, including, but not limited to, loss of anticipated profits or benefits arising out of use of or reliance on the data.
 These data sets have been developed from the best available sources. Although efforts have been made to ensure that the datasets are accurate and reliable, errors and variable conditions originating from physical sources used to develop the data may be reflected in the data supplied.
 This product is not intended to be used for navigation.
 Mariners are encouraged to use all prudent safety measures.



437000 2434000 79°35'0"W 438000 2435000 439000 33°20'N 2436000 440000 79°34'30"W 2437000 441000 2438000 442000 79°34'0"W 2439000



SHEET REFERENCE NUMBER C003 Page 20 of 39	Atlantic Intercoastal Waterway (AIWW) Channel Survey The information depicted on this map represents the results of surveys made on the dates indicated and can only be considered as indicating the general conditions existing at that time. Concluded on: 10 OCT 2017 Charleston, SC to Port Royal, SC	U.S. ARMY ENGINEER DISTRICT CORPS OF ENGINEERS CHARLESTON, SOUTH CAROLINA SPATIAL DATA BRANCH 69A HAGOOD AVE CHARLESTON, SC 29403 CESAC-GIS@USACE.ARMY.MIL	Designed By: eHydro Software v3.82 Reviewed By: CCW Reference Scale: 1 inch = 500 feet Projection: NAD 1983 StatePlane South Carolina FIPS 3900 Feet	Survey Date: 10 OCT 2017 Project Reference Number: CESAC-PRA-0001 Survey Type: CONDITION	Production Date: 12 OCT 2017	
	Shoalest Sounding Sounding may cover several point areas and is calculated per reach quarter area "+" indicates sounding above MLLW	USCG Beacon Green Red White	USCG Buoy Green Red Coast Guard Racon	White Yellow USCG Light	Depth in feet 0-3 3 to 6 6 to 9 9 to 12 Greater Than 12	0 250 500 1,000 1,500 Feet
	Production Notes: 1. The information depicted on this product is for plotting purposes only. 2. Vector hydrographic data derived from surveys conducted by the USACE and approved partners. 3. Soundings are in feet and refer to Mean Lower Low Water (MLLW). 4. Raster Background: ArcGIS Online Image Basemap dated 2010 - 2011. In no event shall the U.S. Army Corps of Engineers, Charleston District Office, Spatial Data Branch be liable for direct, indirect, incidental, consequential or special damages of any kind, including, but not limited to, loss of anticipated profits or benefits arising out of use of or reliance on the data. These data sets have been developed from the best available sources. Although efforts have been made to ensure that the datasets are accurate and reliable, errors and variable conditions originating from physical sources used to develop the data may be reflected in the data supplied. This product is not intended to be used for navigation. Mariners are encouraged to use all prudent safety measures.		 U.S. Army Corps of Engineers Charleston District			

2429000 79°36'0"W 432000 2430000 33°10'N 434000 2431000 79°35'30"W 435000 2432000 436000 33°13'0"N 437000 438000



429000 431000 433000 2432000 79°35'30"W 434000 435000 436000 33°10'N 437000 438000 2437000 79°34'30"W

SHEET REFERENCE NUMBER C003 Page 21 of 39

Atlantic Intercoastal Waterway (AIWW) Channel Survey
 The information depicted on this map represents the results of surveys made on the dates indicated and can only be considered as indicating the general conditions existing at that time.
 Concluded on: **10 OCT 2017**
 Charleston, SC to Port Royal, SC

U.S. ARMY ENGINEER DISTRICT CORPS OF ENGINEERS CHARLESTON, SOUTH CAROLINA
 SPATIAL DATA BRANCH
 69A HAGOOD AVE
 CHARLESTON, SC 29403
 CESAC-GIS@USACE.ARMY.MIL

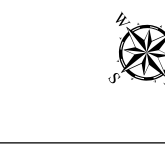
Designed By: eHydro Software v3.82	Survey Date: 10 OCT 2017	Production Date: 12 OCT 2017
Reviewed By: CCW	Absolute Scale: 1:6,000	Project Reference Number: CESAC-PRA-0001
Reference Scale: 1 inch = 500 feet	Survey Type: CONDITION	
Projection: NAD 1983 StatePlane South Carolina FIPS 3900 Feet		

Shoalest Sounding
 Sounding may cover several point areas and is calculated per reach quarter area
 "+" indicates sounding above MLLW

USCG Beacon
 Green
 Red
 White

USCG Buoy
 Green
 Red
 Coast Guard Racon

Depth in feet
 White
 Yellow
 0-3
 3 to 6
 6 to 9
 9 to 12
 Greater Than 12



Production Notes:
 1. The information depicted on this product is for plotting purposes only.
 2. Vector hydrographic data derived from surveys conducted by the USACE and approved partners.
 3. Soundings are in feet and refer to Mean Lower Low Water (MLLW).
 4. Raster Background: ArcGIS Online Image Basemap dated 2010 - 2011.

In no event shall the U.S. Army Corps of Engineers, Charleston District Office, Spatial Data Branch be liable for direct, indirect, incidental, consequential or special damages of any kind, including, but not limited to, loss of anticipated profits or benefits arising out of use of or reliance on the data.
 These data sets have been developed from the best available sources. Although efforts have been made to ensure that the datasets are accurate and reliable, errors and variable conditions originating from physical sources used to develop the data may be reflected in the data supplied.
 This product is not intended to be used for navigation.
 Mariners are encouraged to use all prudent safety measures.





SHEET
REFERENCE
NUMBER
C003
Page 22 of 39

**Atlantic Intercoastal Waterway (AIWW)
Channel Survey**
The information depicted on this map represents the results of surveys made on the dates indicated and can only be considered as indicating the general conditions existing at that time.
Concluded on: **10 OCT 2017**
Charleston, SC to Port Royal, SC

U.S. ARMY ENGINEER DISTRICT
CORPS OF ENGINEERS
CHARLESTON, SOUTH CAROLINA
SPATIAL DATA BRANCH
69A HAGOOD AVE
CHARLESTON, SC 29403
CESAC-GIS@USACE.ARMY.MIL

Designed By: eHydro Software v3.82	Survey Date: 10 OCT 2017	Production Date: 12 OCT 2017
Reviewed By: CCW	Absolute Scale: 1:6,000	Project Reference Number: CESAC-PRA-0001
Reference Scale: 1 inch = 500 feet	Survey Type: CONDITION	
Projection: NAD 1983 StatePlane South Carolina FIPS 3900 Feet		

Shoalest Sounding
● Sounding
Sounding may cover several point areas and is calculated per reach quarter area
"±" indicates sounding above MLLW

USCG Beacon
■ Green
▲ Red
□ White

USCG Buoy
● Green
● Red
● Coast Guard Racon

○ White
○ Yellow
○ USCG Light

Depth in feet

0-3	3 to 6	6 to 9	9 to 12	Greater Than 12
-----	--------	--------	---------	-----------------

0 250 500 1,000 1,500 Feet



Production Notes:
1. The information depicted on this product is for plotting purposes only.
2. Vector hydrographic data derived from surveys conducted by the USACE and approved partners.
3. Soundings are in feet and refer to Mean Lower Low Water (MLLW).
4. Raster Background: ArcGIS Online Image Basemap dated 2010 - 2011.
In no event shall the U.S. Army Corps of Engineers, Charleston District Office, Spatial Data Branch be liable for direct, indirect, incidental, consequential or special damages of any kind, including, but not limited to, loss of anticipated profits or benefits arising out of use of or reliance on the data.
These data sets have been developed from the best available sources. Although efforts have been made to ensure that the datasets are accurate and reliable, errors and variable conditions originating from physical sources used to develop the data may be reflected in the data supplied.
This product is not intended to be used for navigation.
Mariners are encouraged to use all prudent safety measures.





SHEET
REFERENCE
NUMBER
C003
Page 23 of 39

**Atlantic Intercoastal Waterway (AIWW)
Channel Survey**
The information depicted on this map represents the results of surveys made on the dates indicated and can only be considered as indicating the general conditions existing at that time.
Concluded on: **10 OCT 2017**
Charleston, SC to Port Royal, SC

U.S. ARMY ENGINEER DISTRICT
CORPS OF ENGINEERS
CHARLESTON, SOUTH CAROLINA
SPATIAL DATA BRANCH
69A HAGOOD AVE
CHARLESTON, SC 29403
CESAC-GIS@USACE.ARMY.MIL

Designed By: eHydro Software v3.82	Survey Date: 10 OCT 2017	Production Date: 12 OCT 2017
Reviewed By: CCW	Absolute Scale: 1:6,000	Project Reference Number: CESAC-PRA-0001
Reference Scale: 1 inch = 500 feet	Survey Type: CONDITION	
Projection: NAD 1983 StatePlane South Carolina FIPS 3900 Feet		

Shoalest Sounding
● Sounding
Sounding may cover several point areas and is calculated per reach quarter area
"±" indicates sounding above MLLW

USCG Beacon
■ Green
▲ Red
□ White

USCG Buoy
● Green
● Red
● Coast Guard Racon

White
● USCG Light

Depth in feet

0-3	3 to 6	6 to 9	9 to 12	Greater Than 12
-----	--------	--------	---------	-----------------

0 250 500 1,000 1,500 Feet



Production Notes:
1. The information depicted on this product is for plotting purposes only.
2. Vector hydrographic data derived from surveys conducted by the USACE and approved partners.
3. Soundings are in feet and refer to Mean Lower Low Water (MLLW).
4. Raster Background: ArcGIS Online Image Basemap dated 2010 - 2011.

In no event shall the U.S. Army Corps of Engineers, Charleston District Office, Spatial Data Branch be liable for direct, indirect, incidental, consequential or special damages of any kind, including, but not limited to, loss of anticipated profits or benefits arising out of use of or reliance on the data.
These data sets have been developed from the best available sources. Although efforts have been made to ensure that the datasets are accurate and reliable, errors and variable conditions originating from physical sources used to develop the data may be reflected in the data supplied.
This product is not intended to be used for navigation.
Mariners are encouraged to use all prudent safety measures.



414000 2416000 415000 79°38'30"W 416000 2417000 417000 2418000 418000 32°58'30"N 419000 2419000 79°38'0"W 420000



412000 2420000 413000 2421000 414000 79°37'30"W 415000 32°57'30"N 2422000 416000 2423000 418000 79°38'0"W 32°56'30"N

SHEET
REFERENCE
NUMBER
C003
Page 24 of 39

**Atlantic Intercoastal Waterway (AIWW)
Channel Survey**
The information depicted on this map represents the results of surveys made on the dates indicated and can only be considered as indicating the general conditions existing at that time.
Concluded on: **10 OCT 2017**
Charleston, SC to Port Royal, SC

U.S. ARMY ENGINEER DISTRICT
CORPS OF ENGINEERS
CHARLESTON, SOUTH CAROLINA
SPATIAL DATA BRANCH
69A HAGOOD AVE
CHARLESTON, SC 29403
CESAC-GIS@USACE.ARMY.MIL

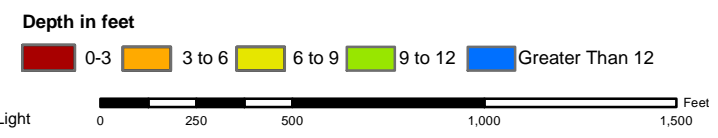
Designed By: eHydro Software v3.82	Survey Date: 10 OCT 2017	Production Date: 12 OCT 2017
Reviewed By: CCW	Absolute Scale: 1:6,000	Project Reference Number: CESAC-PRA-0001
Reference Scale: 1 inch = 500 feet	Survey Type: CONDITION	
Projection: NAD 1983 StatePlane South Carolina FIPS 3900 Feet		

Shoalest Sounding
● Sounding
Sounding may cover several point areas and is calculated per reach quarter area
"±" indicates sounding above MLLW

USCG Beacon
■ Green
▲ Red
□ White

USCG Buoy
● Green
● Red
● Coast Guard Racon

○ White
○ Yellow
○ USCG Light

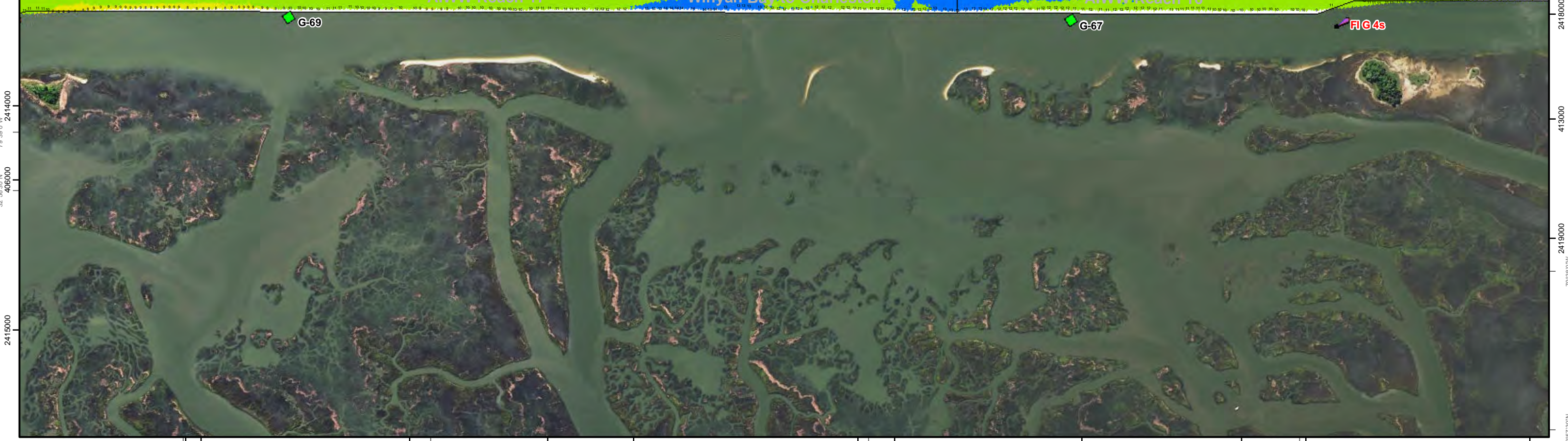


Production Notes:
1. The information depicted on this product is for plotting purposes only.
2. Vector hydrographic data derived from surveys conducted by the USACE and approved partners.
3. Soundings are in feet and refer to Mean Lower Low Water (MLLW).
4. Raster Background: ArcGIS Online Image Basemap dated 2010 - 2011.

In no event shall the U.S. Army Corps of Engineers, Charleston District Office, Spatial Data Branch be liable for direct, indirect, incidental, consequential or special damages of any kind, including, but not limited to, loss of anticipated profits or benefits arising out of use of or reliance on the data.
These data sets have been developed from the best available sources. Although efforts have been made to ensure that the datasets are accurate and reliable, errors and variable conditions originating from physical sources used to develop the data may be reflected in the data supplied.
This product is not intended to be used for navigation.
Mariners are encouraged to use all prudent safety measures.



408000 2412000 32°57'0"N 409000 2413000 411000 2414000 79°38'0"W 32°57'30"N 412000 2415000 413000 2416000 414000



2416000 407000 2417000 408000 409000 2418000 410000 2419000 411000 412000
 32°56'30"N 79°38'30"W 32°57'0"N 79°38'0"W

SHEET
 REFERENCE
 NUMBER
C003
 Page 45 of 98

**Atlantic Intercoastal Waterway (AIWW)
 Channel Survey**
 The information depicted on this map represents the results of surveys made on the dates indicated and can only be considered as indicating the general conditions existing at that time.
 Concluded on: **10 OCT 2017**
 Charleston, SC to Port Royal, SC

U.S. ARMY ENGINEER DISTRICT
 CORPS OF ENGINEERS
 CHARLESTON, SOUTH CAROLINA
 SPATIAL DATA BRANCH
 69A HAGOOD AVE
 CHARLESTON, SC 29403
 CESAC-GIS@USACE.ARMY.MIL

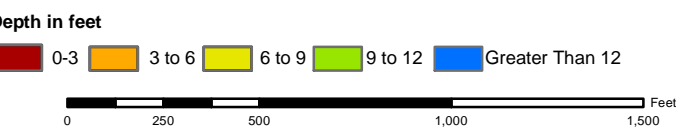
Designed By: eHydro Software v3.82	Survey Date: 10 OCT 2017	Production Date: 12 OCT 2017
Reviewed By: CCW	Absolute Scale: 1:6,000	Project Reference Number: CESAC-PRA-0001
Reference Scale: 1 inch = 500 feet	Survey Type: CONDITION	
Projection: NAD 1983 StatePlane South Carolina FIPS 3900 Feet		

Shoalest Sounding
 Sounding may cover several point areas and is calculated per reach quarter area
 "+" indicates sounding above MLLW

USCG Beacon
 Green
 Red
 White

USCG Buoy
 Green
 Red
 Coast Guard Racon

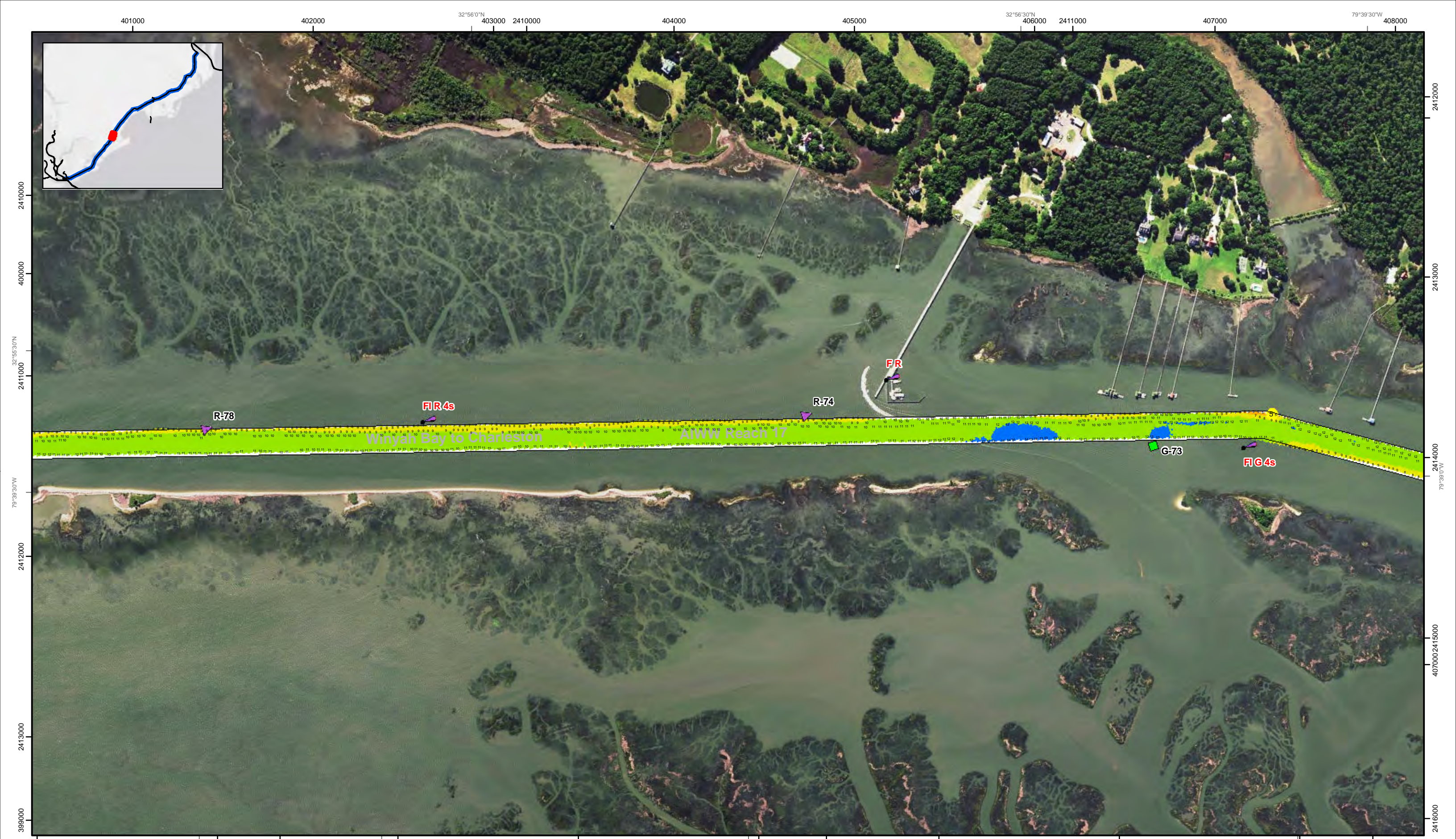
White
 Yellow
 USCG Light



Production Notes:
 1. The information depicted on this product is for plotting purposes only.
 2. Vector hydrographic data derived from surveys conducted by the USACE and approved partners.
 3. Soundings are in feet and refer to Mean Lower Low Water (MLLW).
 4. Raster Background: ArcGIS Online Image Basemap dated 2010 - 2011

In no event shall the U.S. Army Corps of Engineers, Charleston District Office, Spatial Data Branch be liable for direct, indirect, incidental, consequential or special damages of any kind, including, but not limited to, loss of anticipated profits or benefits arising out of use of or reliance on the data.
 These data sets have been developed from the best available sources. Although efforts have been made to ensure that the datasets are accurate and reliable, errors and variable conditions originating from physical sources used to develop the data may be reflected in the data supplied.
This product is not intended to be used for navigation.
 Mariners are encouraged to use all prudent safety measures.





SHEET
REFERENCE
NUMBER
C003
Page 26 of 39

**Atlantic Intercoastal Waterway (AIWW)
Channel Survey**
The information depicted on this map represents the
results of surveys made on the dates indicated and
can only be considered as indicating the general
conditions existing at that time.
Concluded on: **10 OCT 2017**
Charleston, SC to Port Royal, SC

U.S. ARMY ENGINEER DISTRICT
CORPS OF ENGINEERS
CHARLESTON, SOUTH CAROLINA
SPATIAL DATA BRANCH
69A HAGOOD AVE
CHARLESTON, SC 29403
CESAC-GIS@USACE.ARMY.MIL

Designed By: eHydro Software v3.82	Survey Date: 10 OCT 2017	Production Date: 12 OCT 2017
Reviewed By: CCW	Absolute Scale: 1:6,000	Project Reference Number: CESAC-PRA-0001
Reference Scale: 1 inch = 500 feet	Survey Type: CONDITION	
Projection: NAD 1983 StatePlane South Carolina FIPS 3900 Feet		

Shoalest Sounding
Sounding
Sounding may cover several
point areas and is calculated
per reach quarter area
"+" indicates sounding above MLLW

USCG Beacon
Green
Red
White

USCG Buoy
Green
Red
Coast Guard Racon

USCG Light
White
Yellow

Depth in feet

0-3	3 to 6	6 to 9	9 to 12	Greater Than 12
-----	--------	--------	---------	-----------------

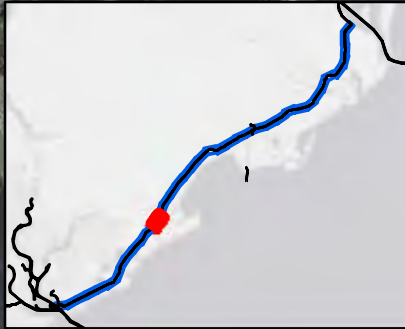
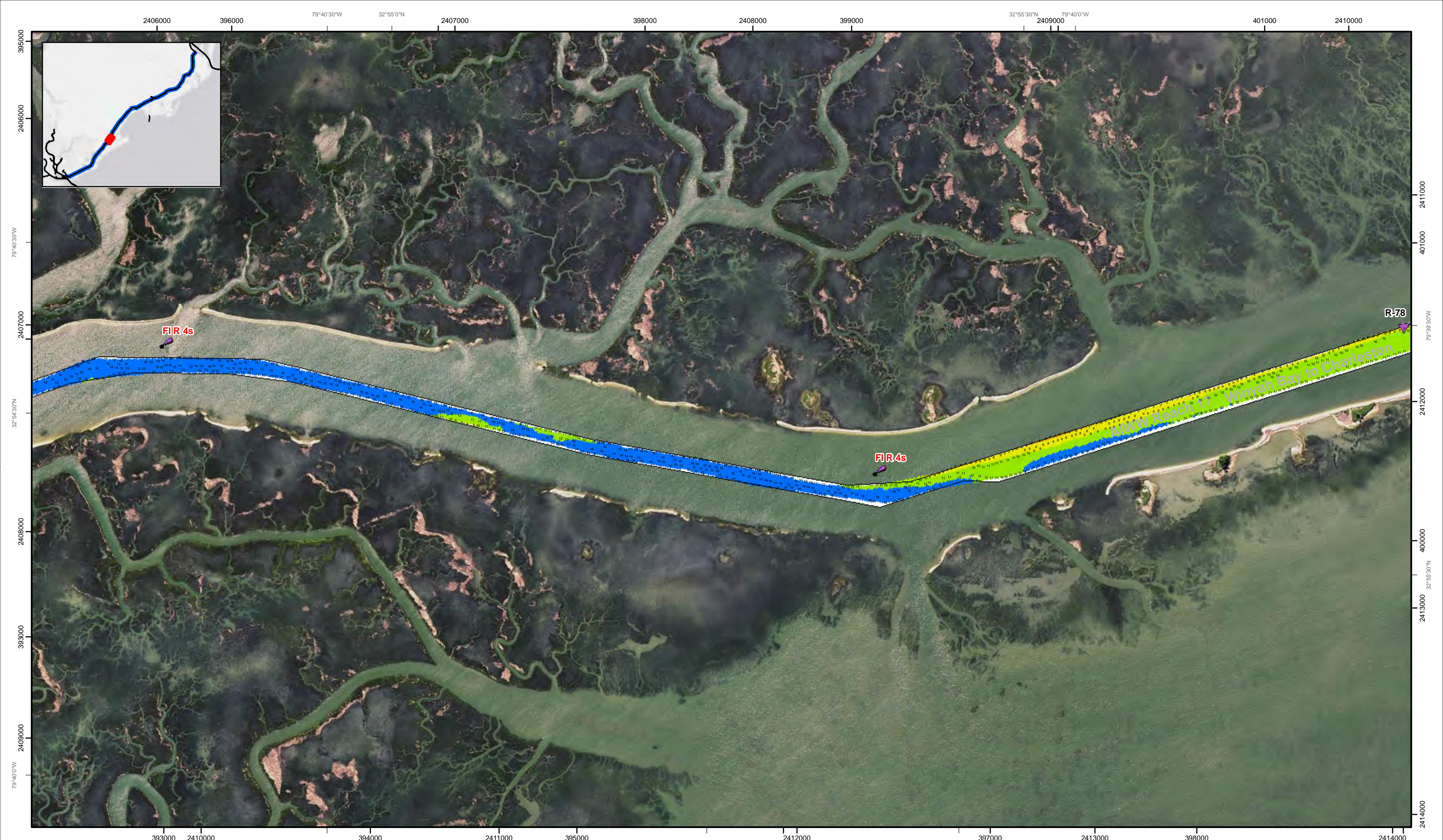
0 250 500 1,000 1,500 Feet



Production Notes:
1. The information depicted on this product is for plotting purposes only.
2. Vector hydrographic data derived from surveys conducted by the USACE and approved partners. Soundings are in feet and refer to Mean Lower Low Water (MLLW).
3. Raster Background: ArcGIS Online Image Basemap dated 2010 - 2011.
4. This product is not intended to be used for navigation. Mariners are encouraged to use all prudent safety measures.

In no event shall the U.S. Army Corps of Engineers, Charleston District Office, Spatial Data Branch be liable for direct, indirect, incidental, consequential or special damages of any kind, including, but not limited to, loss of anticipated profits or benefits arising out of use of or reliance on the data.
These data sets have been developed from the best available sources. Although efforts have been made to ensure that the datasets are accurate and reliable, errors and variable conditions originating from physical sources used to develop the data may be reflected in the data supplied.
This product is not intended to be used for navigation. Mariners are encouraged to use all prudent safety measures.





SHEET
REFERENCE
NUMBER
C003
Page 27 of 39

**Atlantic Intercoastal Waterway (AIWW)
Channel Survey**
The information depicted on this map represents the
results of surveys made on the dates indicated and
can only be considered as indicating the general
conditions existing at that time.
Concluded on: **10 OCT 2017**
Charleston, SC to Port Royal, SC

U.S. ARMY ENGINEER DISTRICT
CORPS OF ENGINEERS
CHARLESTON, SOUTH CAROLINA
SPATIAL DATA BRANCH
69A HAGOOD AVE
CHARLESTON, SC 29403
CESAC-GIS@USACE.ARMY.MIL

Designed By: eHydro Software v3.82	Survey Date: 10 OCT 2017	Production Date: 12 OCT 2017
Reviewed By: CCW	Absolute Scale: 1:6,000	Project Reference Number: CESAC-PRA-0001
Reference Scale: 1 inch = 500 feet	Survey Type: CONDITION	
Projection: NAD 1983 StatePlane South Carolina FIPS 3900 Feet		

Shoalest Sounding
● Sounding
Sounding may cover several
point areas and is calculated
per reach quarter area
"±" indicates sounding above MLLW

USCG Beacon
■ Green
▲ Red
□ White

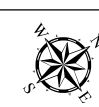
USCG Buoy
● Green
● Red
● Coast Guard Racon

○ White
○ Yellow
○ USCG Light

Depth in feet

0-3	3 to 6	6 to 9	9 to 12	Greater Than 12
-----	--------	--------	---------	-----------------

0 250 500 1,000 1,500 Feet



Production Notes:
1. The information depicted on this
product is for plotting purposes only
2. Vector hydrographic data derived
from surveys conducted by the
USACE and approved partners
3. Soundings are in feet and refer
to Mean Lower Low Water (MLLW)
4. Raster Background: ArcGIS Online
Image Basemap dated 2010 - 2011

In no event shall the U.S. Army Corps of Engineers, Charleston
District Office, Spatial Data Branch be liable for direct, indirect,
incidental, consequential or special damages of any kind, including,
but not limited to, loss of anticipated profits or benefits arising out of
use of or reliance on the data.
These data sets have been developed from the best available
sources. Although efforts have been made to ensure that the
datasets are accurate and reliable, errors and variable conditions
originating from physical sources used to develop the data may be
reflected in the data supplied.
This product is not intended to be used for navigation.
Mariners are encouraged to use all prudent safety measures.





**Atlantic Intercoastal Waterway (AIWW)
Channel Survey**
The information depicted on this map represents the results of surveys made on the dates indicated and can only be considered as indicating the general conditions existing at that time.
Concluded on: **10 OCT 2017**
Charleston, SC to Port Royal, SC

U.S. ARMY ENGINEER DISTRICT
CORPS OF ENGINEERS
CHARLESTON, SOUTH CAROLINA
SPATIAL DATA BRANCH
69A HAGOOD AVE
CHARLESTON, SC 29403
CESAC-GIS@USACE.ARMY.MIL

Designed By: **eHydro Software v3.82**
Reviewed By: **CCW**
Reference Scale: **1 inch = 500 feet**
Projection: **NAD 1983 StatePlane South Carolina FIPS 3900 Feet**

Survey Date: **10 OCT 2017**
Production Date: **12 OCT 2017**
Project Reference Number: **CESAC-PRA-0001**
Survey Type: **CONDITION**

Shoalest Sounding
Sounding may cover several point areas and is calculated per reach quarter area
"±" indicates sounding above MLLW

USCG Beacon
Green
Red
White

USCG Buoy
Green
Red
Coast Guard Racon

White
Yellow
USCG Light

Depth in feet
0-3
3 to 6
6 to 9
9 to 12
Greater Than 12

0 250 500 1,000 1,500 Feet



Production Notes:
1. The information depicted on this product is for plotting purposes only.
2. Vector hydrographic data derived from surveys conducted by the USACE and approved partners.
3. Soundings are in feet and refer to Mean Lower Low Water (MLLW).
4. Raster Background: ArcGIS Online Image Basemap dated 2010 - 2011.
This product is not intended to be used for navigation.
Mariners are encouraged to use all prudent safety measures.

In no event shall the U.S. Army Corps of Engineers, Charleston District Office, Spatial Data Branch be liable for direct, indirect, incidental, consequential or special damages of any kind, including, but not limited to, loss of anticipated profits or benefits arising out of use of or reliance on the data.
These data sets have been developed from the best available sources. Although efforts have been made to ensure that the datasets are accurate and reliable, errors and variable conditions originating from physical sources used to develop the data may be reflected in the data supplied.



2397000 384000 32°53'0"N 385000 2398000 386000 79°42'0"W 2399000 32°53'30"N 388000 2400000 389000 390000 2401000



2401000 32°52'30"N 382000 79°41'30"W 2402000 384000 2403000 385000 2404000 79°41'0"W 387000 2405000 32°53'0"N

Atlantic Intercoastal Waterway (AIWW) Channel Survey
 The information depicted on this map represents the results of surveys made on the dates indicated and can only be considered as indicating the general conditions existing at that time.
 Concluded on: **10 OCT 2017**
 Charleston, SC to Port Royal, SC

U.S. ARMY ENGINEER DISTRICT CORPS OF ENGINEERS CHARLESTON, SOUTH CAROLINA	Designed By: eHydro Software v3.82	Survey Date: 10 OCT 2017	Production Date: 12 OCT 2017
SPATIAL DATA BRANCH 69A HAGOOD AVE CHARLESTON, SC 29403 CESAC-GIS@USACE.ARMY.MIL	Reviewed By: CCW	Absolute Scale: 1:6,000	Project Reference Number: CESAC-PRA-0001
	Reference Scale: 1 inch = 500 feet	Survey Type: CONDITION	
	Projection: NAD 1983 StatePlane South Carolina FIPS 3900 Feet		

Shoalest Sounding
 ● Sounding
Sounding may cover several point areas and is calculated per reach quarter area
 "+" indicates sounding above MLLW

USCG Beacon
 ● Green
 ● Red
 □ White

USCG Buoy
 ● Green
 ● Red
 ● Coast Guard Racon

USCG Light
 ● White
 ● Yellow

Depth in feet
 ● 0-3
 ● 3 to 6
 ● 6 to 9
 ● 9 to 12
 ● Greater Than 12

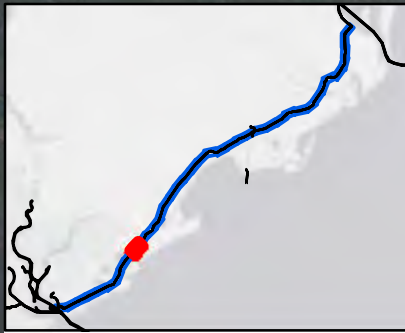
0 250 500 1,000 1,500 Feet

Production Notes:
 1. The information depicted on this product is for plotting purposes only
 2. Vector hydrographic data derived from surveys conducted by the USACE and approved partners
 3. Soundings are in feet and refer to Mean Lower Low Water (MLLW)
 4. Raster Background: ArcGIS Online Image Basemap dated 2010 - 2011

In no event shall the U.S. Army Corps of Engineers, Charleston District Office, Spatial Data Branch be liable for direct, indirect, incidental, consequential or special damages of any kind, including, but not limited to, loss of anticipated profits or benefits arising out of use of or reliance on the data.
 These data sets have been developed from the best available sources. Although efforts have been made to ensure that the datasets are accurate and reliable, errors and variable conditions originating from physical sources used to develop the data may be reflected in the data supplied.
This product is not intended to be used for navigation.
 Mariners are encouraged to use all prudent safety measures.

U.S. Army Corps of Engineers
 Charleston District

379000 2393000 380000 79°43'0"W 2394000 32°52'30"N 2395000 383000 2396000 79°42'30"W 384000 2397000 32°53'0"N



376000 2395000 377000 2394000 79°43'0"W 2394000 32°52'0"N 378000 2398000 32°52'0"N 379000 2399000 79°42'0"W 380000 2400000 381000 382000 376000 2396000 79°42'30"W 377000 2397000 378000 2398000 32°52'0"N 379000 2399000 79°42'0"W 380000 2400000 381000 382000 2401000

SHEET
REFERENCE
NUMBER
C003
Page 30 of 39

**Atlantic Intercoastal Waterway (AIWW)
Channel Survey**
The information depicted on this map represents the results of surveys made on the dates indicated and can only be considered as indicating the general conditions existing at that time.
Concluded on: **10 OCT 2017**
Charleston, SC to Port Royal, SC

U.S. ARMY ENGINEER DISTRICT
CORPS OF ENGINEERS
CHARLESTON, SOUTH CAROLINA
SPATIAL DATA BRANCH
69A HAGOOD AVE
CHARLESTON, SC 29403
CESAC-GIS@USACE.ARMY.MIL

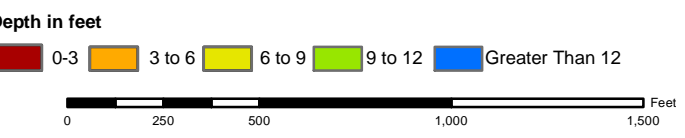
Designed By: eHydro Software v3.82	Survey Date: 10 OCT 2017	Production Date: 12 OCT 2017
Reviewed By: CCW	Absolute Scale: 1:6,000	Project Reference Number: CESAC-PRA-0001
Reference Scale: 1 inch = 500 feet	Survey Type: CONDITION	
Projection: NAD 1983 StatePlane South Carolina FIPS 3900 Feet		

Shoalest Sounding
Sounding may cover several point areas and is calculated per reach quarter area
"+" indicates sounding above MLLW

USCG Beacon
Green
Red
White

USCG Buoy
Green
Red
Coast Guard Racon

White
Yellow
USCG Light



Production Notes:
1. The information depicted on this product is for plotting purposes only.
2. Vector hydrographic data derived from surveys conducted by the USACE and approved partners.
3. Soundings are in feet and refer to Mean Lower Low Water (MLLW).
4. Raster Background: ArcGIS Online Image Basemap dated 2010 - 2011.

In no event shall the U.S. Army Corps of Engineers, Charleston District Office, Spatial Data Branch be liable for direct, indirect, incidental, consequential or special damages of any kind, including, but not limited to, loss of anticipated profits or benefits arising out of use of or reliance on the data.
These data sets have been developed from the best available sources. Although efforts have been made to ensure that the datasets are accurate and reliable, errors and variable conditions originating from physical sources used to develop the data may be reflected in the data supplied.
This product is not intended to be used for navigation.
Mariners are encouraged to use all prudent safety measures.





SHEET REFERENCE NUMBER
C003
 Page 31 of 39

Atlantic Intercoastal Waterway (AIWW) Channel Survey
 The information depicted on this map represents the results of surveys made on the dates indicated and can only be considered as indicating the general conditions existing at that time.
 Concluded on: **10 OCT 2017**
 Charleston, SC to Port Royal, SC

U.S. ARMY ENGINEER DISTRICT CORPS OF ENGINEERS CHARLESTON, SOUTH CAROLINA SPATIAL DATA BRANCH 69A HAGOOD AVE CHARLESTON, SC 29403 CESAC-GIS@USACE.ARMY.MIL	Designed By: eHydro Software v3.82 Reviewed By: CCW Reference Scale: 1 inch = 500 feet Projection: NAD 1983 StatePlane South Carolina FIPS 3900 Feet	Survey Date: 10 OCT 2017 Project Reference Number: CESAC-PRA-0001 Survey Type: CONDITION	Production Date: 12 OCT 2017
--	---	--	--

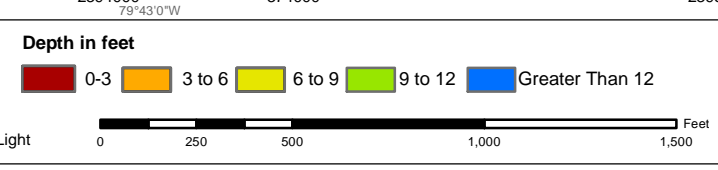
Shoalest Sounding

Sounding
 Sounding may cover several point areas and is calculated per reach quarter area
 "+" indicates sounding above MLLW

USCG Beacon
 Green
 Red
 White

USCG Buoy
 Green
 Red
 Coast Guard Racon

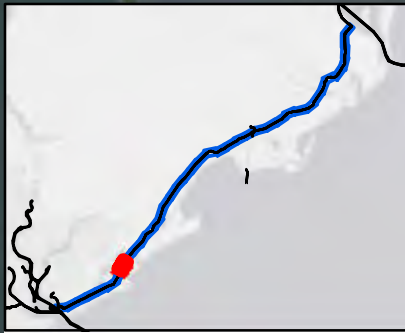
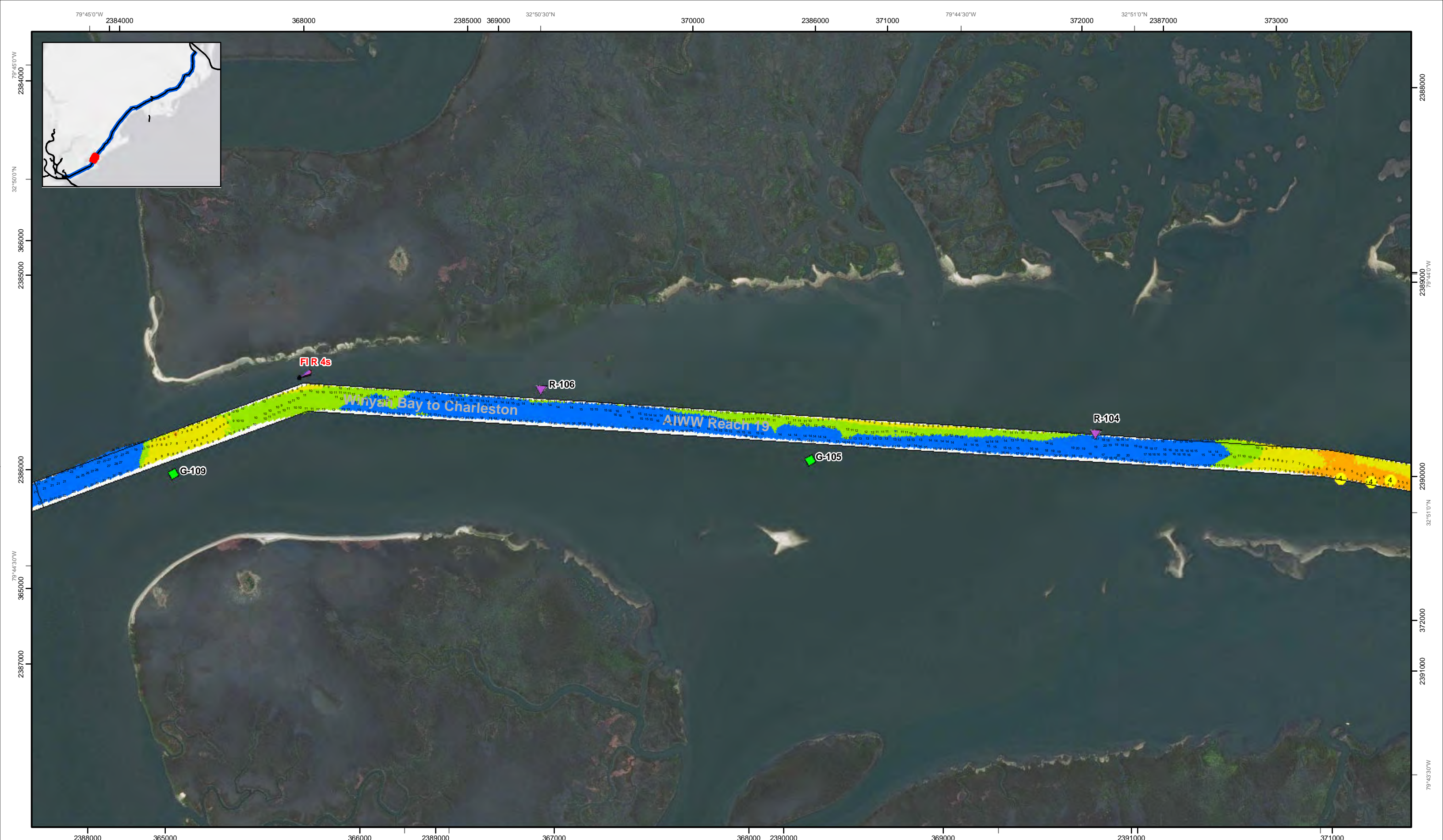
White
 Yellow
 USCG Light



Production Notes:
 1. The information depicted on this product is for plotting purposes only.
 2. Vector hydrographic data derived from surveys conducted by the USACE and approved partners.
 3. Soundings are in feet and refer to Mean Lower Low Water (MLLW).
 4. Raster Background: ArcGIS Online Image Basemap dated 2010 - 2011.

 In no event shall the U.S. Army Corps of Engineers, Charleston District Office, Spatial Data Branch be liable for direct, indirect, incidental, consequential or special damages of any kind, including, but not limited to, loss of anticipated profits or benefits arising out of use of or reliance on the data.
 These data sets have been developed from the best available sources. Although efforts have been made to ensure that the datasets are accurate and reliable, errors and variable conditions originating from physical sources used to develop the data may be reflected in the data supplied.
This product is not intended to be used for navigation.
 Mariners are encouraged to use all prudent safety measures.





SHEET
REFERENCE
NUMBER
C003
Page 32 of 39

Atlantic Intercoastal Waterway (AIWW) Channel Survey
The information depicted on this map represents the results of surveys made on the dates indicated and can only be considered as indicating the general conditions existing at that time.
Concluded on: **10 OCT 2017**
Charleston, SC to Port Royal, SC

U.S. ARMY ENGINEER DISTRICT
CORPS OF ENGINEERS
CHARLESTON, SOUTH CAROLINA

SPATIAL DATA BRANCH
69A HAGOOD AVE
CHARLESTON, SC 29403
CESAC-GIS@USACE.ARMY.MIL

Designed By: eHydro Software v3.82	Survey Date: 10 OCT 2017	Production Date: 12 OCT 2017
Reviewed By: CCW	Absolute Scale: 1:6,000	Project Reference Number: CESAC-PRA-0001
Reference Scale: 1 inch = 500 feet	Survey Type: CONDITION	
Projection: NAD 1983 StatePlane South Carolina FIPS 3900 Feet		

Shoalest Sounding
● Sounding
Sounding may cover several point areas and is calculated per reach quarter area
"±" indicates sounding above MLLW

USCG Beacon
■ Green
▲ Red
□ White

USCG Buoy
● Green
● Red
● Coast Guard Racon

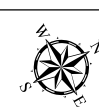
○ White
○ Yellow
○ USCG Light

Depth in feet

0-3 3 to 6 6 to 9 9 to 12 Greater Than 12

0 250 500 1,000 1,500

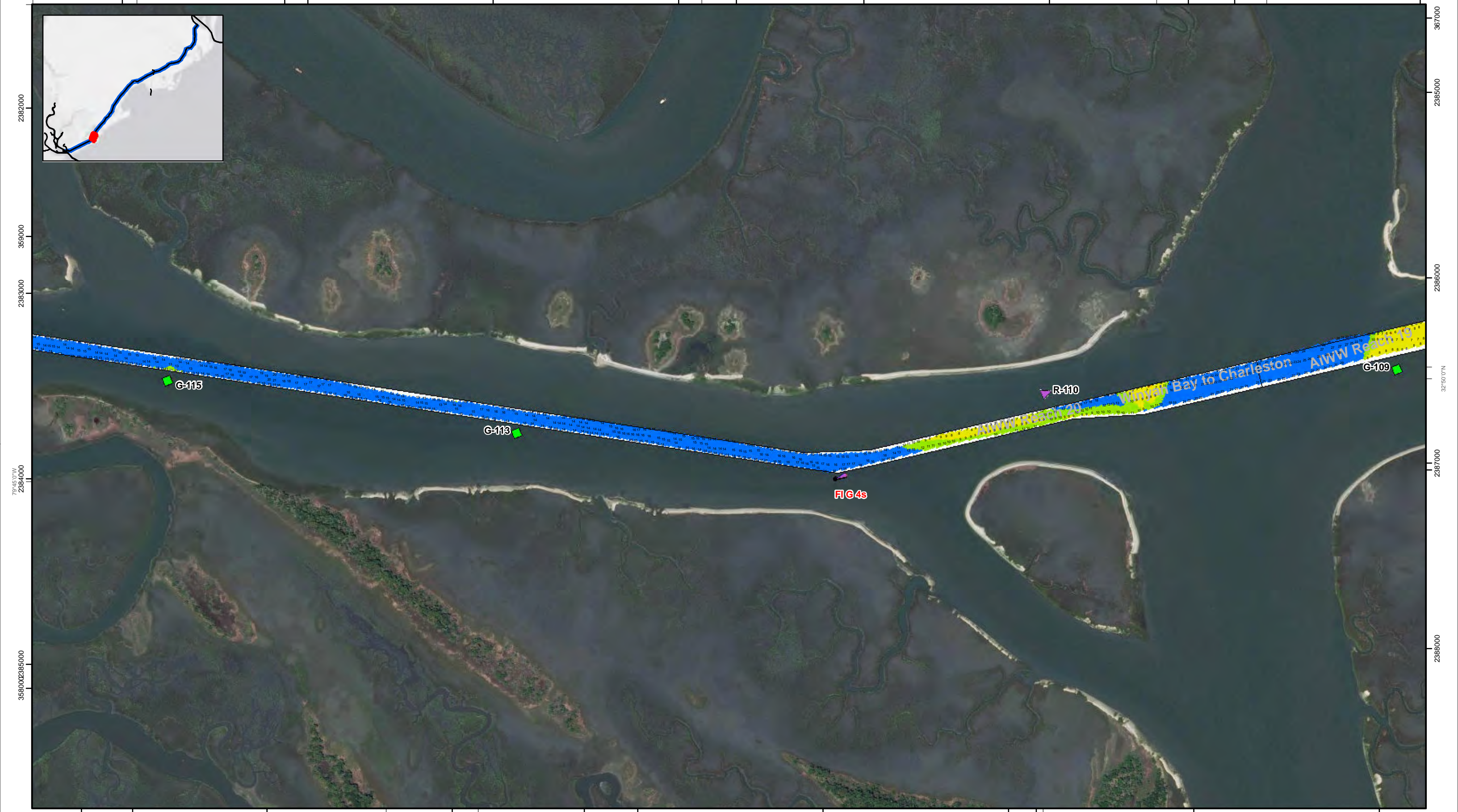
Feet



Production Notes:
1. The information depicted on this product is for plotting purposes only.
2. Vector hydrographic data derived from surveys conducted by the USACE and approved partners. Soundings are in feet and refer to Mean Lower Low Water (MLLW).
3. Raster Background: ArcGIS Online Image Basemap dated 2010 - 2011.
4. This product is not intended to be used for navigation. Mariners are encouraged to use all prudent safety measures.

In no event shall the U.S. Army Corps of Engineers, Charleston District Office, Spatial Data Branch be liable for direct, indirect, incidental, consequential or special damages of any kind, including, but not limited to, loss of anticipated profits or benefits arising out of use of or reliance on the data.
These data sets have been developed from the best available sources. Although efforts have been made to ensure that the datasets are accurate and reliable, errors and variable conditions originating from physical sources used to develop the data may be reflected in the data supplied.
This product is not intended to be used for navigation. Mariners are encouraged to use all prudent safety measures.





SHEET REFERENCE NUMBER
C003
Page 33 of 39

Atlantic Intercoastal Waterway (AIWW) Channel Survey
The information depicted on this map represents the results of surveys made on the dates indicated and can only be considered as indicating the general conditions existing at that time.
Concluded on: **10 OCT 2017**
Charleston, SC to Port Royal, SC

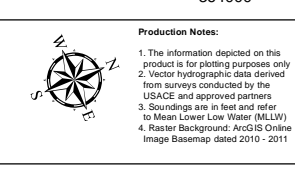
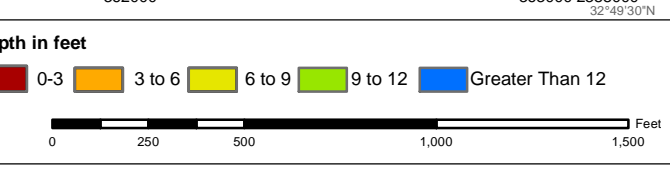
U.S. ARMY ENGINEER DISTRICT CORPS OF ENGINEERS CHARLESTON, SOUTH CAROLINA	Designed By: eHydro Software v3.82	Survey Date: 10 OCT 2017	Production Date: 12 OCT 2017
SPATIAL DATA BRANCH 69A HAGOOD AVE CHARLESTON, SC 29403 CESAC-GIS@USACE.ARMY.MIL	Reviewed By: CCW	Absolute Scale: 1:6,000	Project Reference Number: CESAC-PRA-0001
	Reference Scale: 1 inch = 500 feet	Survey Type: CONDITION	
	Projection: NAD 1983 StatePlane South Carolina FIPS 3900 Feet		

Shoalest Sounding
Sounding may cover several point areas and is calculated per reach quarter area
"±" indicates sounding above MLLW

USCG Beacon
Green
Red
White

USCG Buoy
Green
Red
Coast Guard Racon

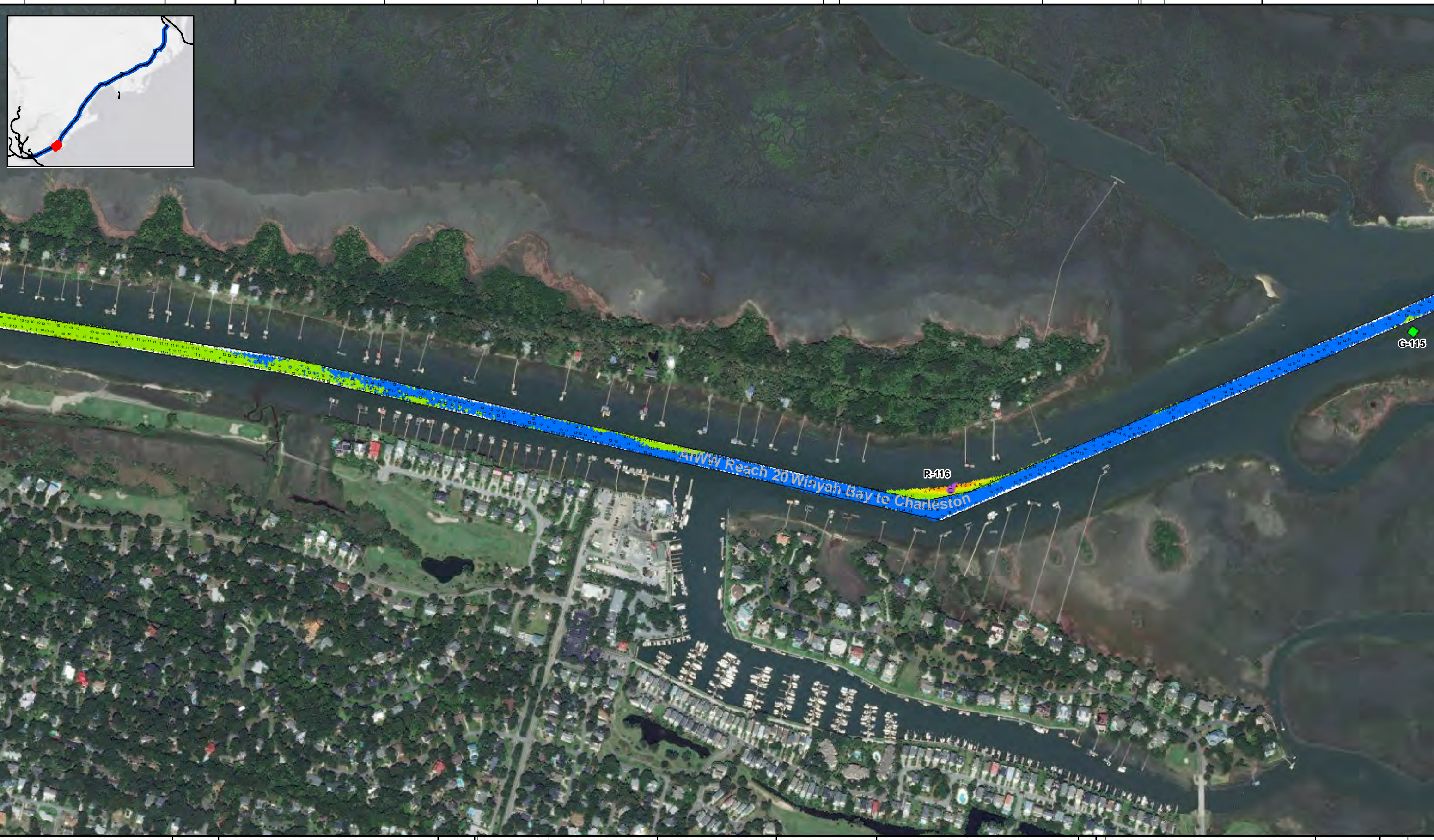
USCG Light
White
Yellow



In no event shall the U.S. Army Corps of Engineers, Charleston District Office, Spatial Data Branch be liable for direct, indirect, incidental, consequential or special damages of any kind, including, but not limited to, loss of anticipated profits or benefits arising out of use of or reliance on the data.
These data sets have been developed from the best available sources. Although efforts have been made to ensure that the datasets are accurate and reliable, errors and variable conditions originating from physical sources used to develop the data may be reflected in the data supplied.
This product is not intended to be used for navigation.
Mariners are encouraged to use all prudent safety measures.



79°46'30"W 2377000 32°48'30"N 357000 2378000 358000 79°46'0"W 2379000 2380000 2381000 79°45'30"W 360000 2382000



79°46'0"W 2379000 353000 32°48'0"N 354000 2378000 354000 79°45'30"W 2384000 359000 2385000 357000 32°48'30"N

SHEET
REFERENCE
NUMBER
C003
Page 34 of 39

**Atlantic Intercoastal Waterway (AIWW)
Channel Survey**
The information depicted on this map represents the results of surveys made on the dates indicated and can only be considered as indicating the general conditions existing at that time.
Concluded on: **10 OCT 2017**
Charleston, SC to Port Royal, SC

U.S. ARMY ENGINEER DISTRICT
CORPS OF ENGINEERS
CHARLESTON, SOUTH CAROLINA
SPATIAL DATA BRANCH
69A HAGOOD AVE
CHARLESTON, SC 29403
CESAC-GIS@USACE.ARMY.MIL

Designed By: eHydro Software v3.82	Survey Date: 10 OCT 2017	Production Date: 12 OCT 2017
Reviewed By: CCW	Absolute Scale: 1:6,000	Project Reference Number: CESAC-PRA-0001
Reference Scale: 1 inch = 500 feet	Survey Type: CONDITION	
Projection: NAD 1983 StatePlane South Carolina FIPS 3900 Feet		

Shoalest Sounding
● Sounding
Sounding may cover several point areas and is calculated per reach quarter area
"±" indicates sounding above MLLW

USCG Beacon
■ Green
▲ Red
□ White

USCG Buoy
● Green
● Red
● Coast Guard Racon

○ White
○ Yellow
○ USCG Light

Depth in feet

0-3	3 to 6	6 to 9	9 to 12	Greater Than 12
-----	--------	--------	---------	-----------------

0 250 500 1,000 1,500 Feet



Production Notes:
1. The information depicted on this product is for plotting purposes only.
2. Vector hydrographic data derived from surveys conducted by the USACE and approved partners.
3. Soundings are in feet and refer to Mean Lower Low Water (MLLW).
4. Raster Background: ArcGIS Online Image Basemap dated 2010 - 2011.
This product is not intended to be used for navigation.
Mariners are encouraged to use all prudent safety measures.

In no event shall the U.S. Army Corps of Engineers, Charleston District Office, Spatial Data Branch be liable for direct, indirect, incidental, consequential or special damages of any kind, including, but not limited to, loss of anticipated profits or benefits arising out of use of or reliance on the data.
These data sets have been developed from the best available sources. Although efforts have been made to ensure that the datasets are accurate and reliable, errors and variable conditions originating from physical sources used to develop the data may be reflected in the data supplied.



2370000 32°48'0"N 354000 2371000 79°47'30"W 2372000 355000 2373000 79°47'0"W 2374000 356000 2375000 79°46'30"W 2376000 357000 2377000



2372000 2373000 2374000 2375000 2376000 2377000 2378000 2379000
 79°47'30"W 32°47'30"N 79°47'0"W 32°47'30"N 79°46'30"W 32°46'0"N

SHEET
 REFERENCE
 NUMBER
C003
 Page 35 of 39

**Atlantic Intercoastal Waterway (AIWW)
 Channel Survey**
 The information depicted on this map represents the results of surveys made on the dates indicated and can only be considered as indicating the general conditions existing at that time.
 Concluded on: **10 OCT 2017**
 Charleston, SC to Port Royal, SC

U.S. ARMY ENGINEER DISTRICT
 CORPS OF ENGINEERS
 CHARLESTON, SOUTH CAROLINA
 SPATIAL DATA BRANCH
 69A HAGOOD AVE
 CHARLESTON, SC 29403
 CESAC-GIS@USACE.ARMY.MIL

Designed By: eHydro Software v3.8.2	Survey Date: 10 OCT 2017	Production Date: 12 OCT 2017
Reviewed By: CCW	Absolute Scale: 1:6,000	Project Reference Number: CESAC-PRA-0001
Reference Scale: 1 inch = 500 feet	Survey Type: CONDITION	
Projection: NAD 1983 StatePlane South Carolina FIPS 3900 Feet		

Shoalest Sounding
 ● Sounding
 Sounding may cover several point areas and is calculated per reach quarter area
 "+" indicates sounding above MLLW

USCG Beacon
 ● Green
 ● Red
 ● White

USCG Buoy
 ● Green
 ● Red
 ● Coast Guard Racon

White
 ● USCG Light

Depth in feet
 0-3 3 to 6 6 to 9 9 to 12 Greater Than 12

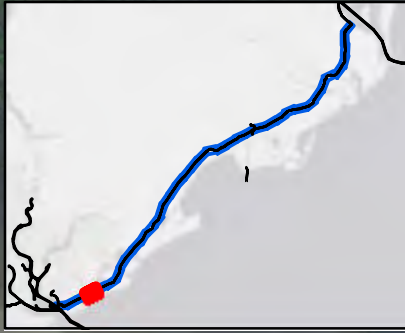


Production Notes:
 1. The information depicted on this product is for plotting purposes only
 2. Vector hydrographic data derived from surveys conducted by the USACE and approved partners
 3. Soundings are in feet and refer to Mean Lower Low Water (MLLW)
 4. Raster Background: ArcGIS Online Image Basemap dated 2010 - 2011

In no event shall the U.S. Army Corps of Engineers, Charleston District Office, Spatial Data Branch be liable for direct, indirect, incidental, consequential or special damages of any kind, including, but not limited to, loss of anticipated profits or benefits arising out of use of or reliance on the data.
 These data sets have been developed from the best available sources. Although efforts have been made to ensure that the datasets are accurate and reliable, errors and variable conditions originating from physical sources used to develop the data may be reflected in the data supplied.
This product is not intended to be used for navigation.
 Mariners are encouraged to use all prudent safety measures.



79°49'0"W 2364000 32°47'30"N 351000 2365000 2366000 79°48'30"W 352000 2367000 2368000 353000 79°48'0"W 2369000 2370000 32°48'0"N 354000



79°49'0"W
350000
349000
2364000
348000
32°47'0"N
2365000
347000

354000
32°48'0"N
2371000
353000
352000
2372000
351000
350000

Atlantic Intercoastal Waterway (AIWW)
Channel Survey
The information depicted on this map represents the results of surveys made on the dates indicated and can only be considered as indicating the general conditions existing at that time.
Concluded on: **10 OCT 2017**
Charleston, SC to Port Royal, SC

U.S. ARMY ENGINEER DISTRICT
CORPS OF ENGINEERS
CHARLESTON, SOUTH CAROLINA
SPATIAL DATA BRANCH
69A HAGOOD AVE
CHARLESTON, SC 29403
CESAC-GIS@USACE.ARMY.MIL

Designed By: eHydro Software v3.82	Survey Date: 10 OCT 2017	Production Date: 12 OCT 2017
Reviewed By: CCW	Absolute Scale: 1:6,000	Project Reference Number: CESAC-PRA-0001
Reference Scale: 1 inch = 500 feet	Survey Type: CONDITION	
Projection: NAD 1983 StatePlane South Carolina FIPS 3900 Feet		

Shoalest Sounding
● Sounding
Sounding may cover several point areas and is calculated per reach quarter area
"±" indicates sounding above MLLW

USCG Beacon
■ Green
▲ Red
□ White

USCG Buoy
● Green
● Red
● Coast Guard Racon

○ White
○ Yellow
○ USCG Light

Depth in feet

0-3	3 to 6	6 to 9	9 to 12	Greater Than 12
-----	--------	--------	---------	-----------------

0 250 500 1,000 1,500 Feet



Production Notes:
1. The information depicted on this product is for plotting purposes only.
2. Vector hydrographic data derived from surveys conducted by the USACE and approved partners.
3. Soundings are in feet and refer to Mean Lower Low Water (MLLW).
4. Raster Background: ArcGIS Online Image Basemap dated 2010 - 2011.

In no event shall the U.S. Army Corps of Engineers, Charleston District Office, Spatial Data Branch be liable for direct, indirect, incidental, consequential or special damages of any kind, including, but not limited to, loss of anticipated profits or benefits arising out of use of or reliance on the data.
These data sets have been developed from the best available sources. Although efforts have been made to ensure that the datasets are accurate and reliable, errors and variable conditions originating from physical sources used to develop the data may be reflected in the data supplied.
This product is not intended to be used for navigation.
Mariners are encouraged to use all prudent safety measures.



SHEET
REFERENCE
NUMBER
C003
Page 36 of 39

32°47'0"N 79°50'0"W 2358000 2359000 2360000 2361000 2362000 2363000 2364000 79°49'0"W 32°47'30"N



AIWW Reach 21 Winyah Bay to Charleston



343000 236000 2361000 344000 2362000 32°46'30"N 2363000 345000 79°49'0"W 2364000 2365000 346000 347000 79°48'30"W

SHEET REFERENCE NUMBER C003 Page 37 of 39

Atlantic Intercoastal Waterway (AIWW) Channel Survey
 The information depicted on this map represents the results of surveys made on the dates indicated and can only be considered as indicating the general conditions existing at that time.
 Concluded on: **10 OCT 2017**
 Charleston, SC to Port Royal, SC

U.S. ARMY ENGINEER DISTRICT
 CORPS OF ENGINEERS
 CHARLESTON, SOUTH CAROLINA
 SPATIAL DATA BRANCH
 69A HAGOOD AVE
 CHARLESTON, SC 29403
 CESAC-GIS@USACE.ARMY.MIL

Designed By: eHydro Software v3.82	Survey Date: 10 OCT 2017	Production Date: 12 OCT 2017
Reviewed By: CCW	Absolute Scale: 1:6,000	Project Reference Number: CESAC-PRA-0001
Reference Scale: 1 inch = 500 feet	Survey Type: CONDITION	
Projection: NAD 1983 StatePlane South Carolina FIPS 3900 Feet		

Shoalest Sounding
 Sounding may cover several point areas and is calculated per reach quarter area
 "+" indicates sounding above MLLW

USCG Beacon
 Green
 Red
 White

USCG Buoy
 Green
 Red
 Coast Guard Racon

USCG Light
 White
 Yellow

Depth in feet

0-3	3 to 6	6 to 9	9 to 12	Greater Than 12
-----	--------	--------	---------	-----------------

0 250 500 1,000 1,500 Feet

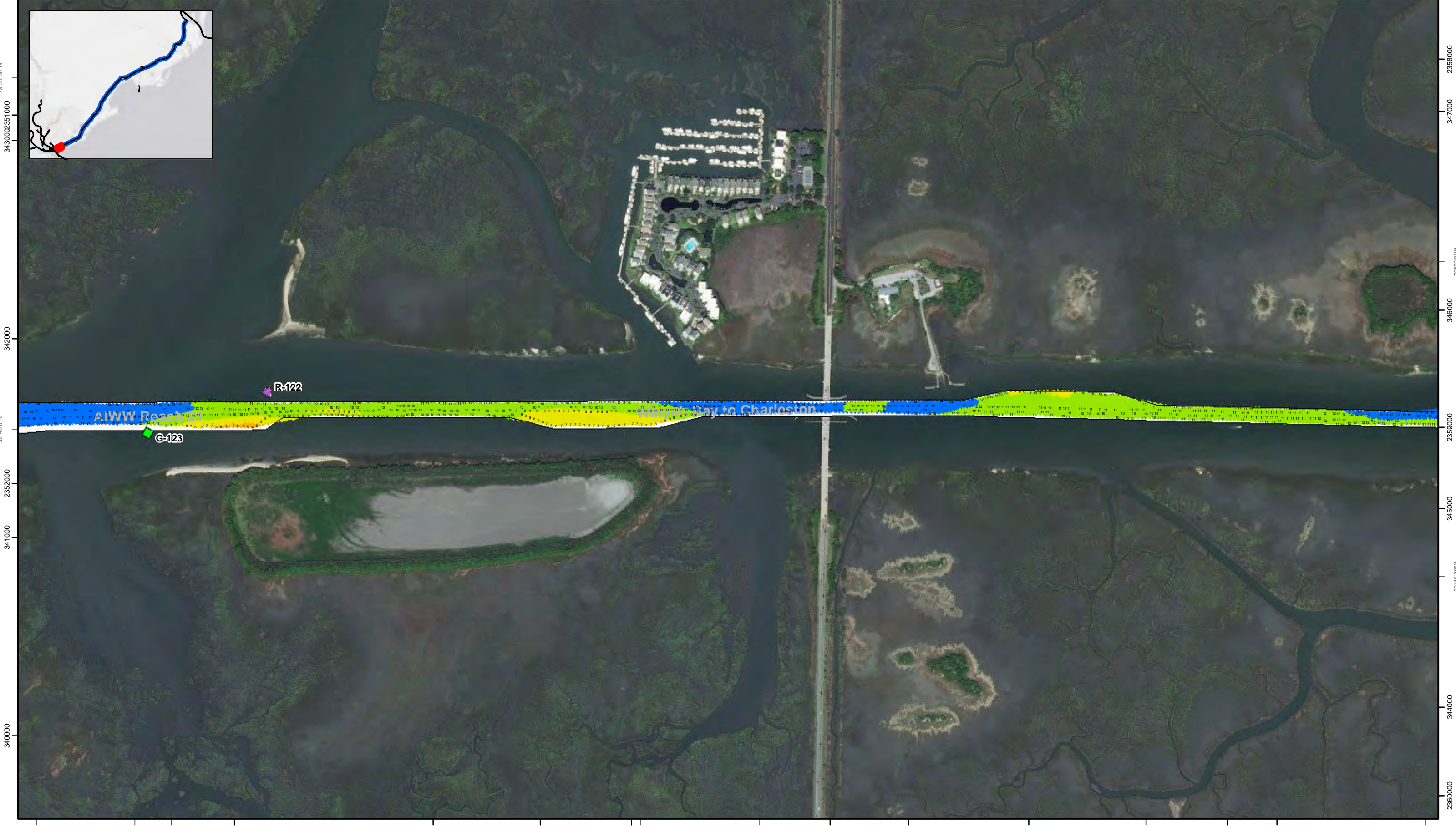
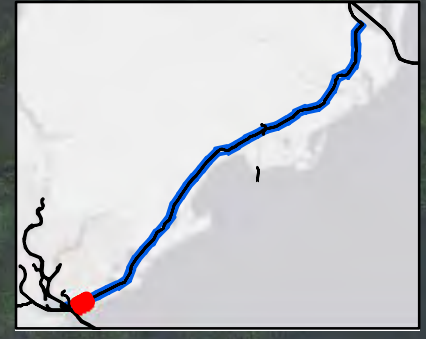


Production Notes:
 1. The information depicted on this product is for plotting purposes only
 2. Vector hydrographic data derived from surveys conducted by the USACE and approved partners
 3. Soundings are in feet and refer to Mean Lower Low Water (MLLW)
 4. Raster Background: ArcGIS Online Image Basemap dated 2010 - 2011

In no event shall the U.S. Army Corps of Engineers, Charleston District Office, Spatial Data Branch be liable for direct, indirect, incidental, consequential or special damages of any kind, including, but not limited to, loss of anticipated profits or benefits arising out of use of or reliance on the data.
 These data sets have been developed from the best available sources. Although efforts have been made to ensure that the datasets are accurate and reliable, errors and variable conditions originating from physical sources used to develop the data may be reflected in the data supplied.
This product is not intended to be used for navigation.
 Mariners are encouraged to use all prudent safety measures.



79°51'30"W 2351000 344000 2352000 32°46'30"N 2353000 79°51'0"W 2354000 2355000 79°50'30"W 2356000 347000 2357000



Atlantic Intercoastal Waterway (AIWW) Channel Survey
 The information depicted on this map represents the results of surveys made on the dates indicated and can only be considered as indicating the general conditions existing at that time.
 Concluded on: **10 OCT 2017**
 Charleston, SC to Port Royal, SC

U.S. ARMY ENGINEER DISTRICT CORPS OF ENGINEERS CHARLESTON, SOUTH CAROLINA	Designed By: eHydro Software v3.8.2	Survey Date: 10 OCT 2017	Production Date: 12 OCT 2017
SPATIAL DATA BRANCH 69A HAGOOD AVE CHARLESTON, SC 29403 CESAC-GIS@USACE.ARMY.MIL	Reviewed By: CCW	Absolute Scale: 1:6,000	Project Reference Number: CESAC-PRA-0001
	Reference Scale: 1 inch = 500 feet	Survey Type: CONDITION	
	Projection: NAD 1983 StatePlane South Carolina FIPS 3900 Feet		

Shoalest Sounding
 Sounding may cover several point areas and is calculated per reach quarter area
 "+" indicates sounding above MLLW

USCG Beacon
 Green
 Red
 White

USCG Buoy
 Green
 Red
 Coast Guard Racon

White
 Yellow
 USCG Light

Depth in feet
 0-3
 3 to 6
 6 to 9
 9 to 12
 Greater Than 12

0 250 500 1,000 1,500 Feet

Production Notes:
 1. The information depicted on this product is for plotting purposes only.
 2. Vector hydrographic data derived from surveys conducted by the USACE and approved partners.
 3. Soundings are in feet and refer to Mean Lower Low Water (MLLW).
 4. Raster Background: ArcGIS Online Image Basemap dated 2010 - 2011.

In no event shall the U.S. Army Corps of Engineers, Charleston District Office, Spatial Data Branch be liable for direct, indirect, incidental, consequential or special damages of any kind, including, but not limited to, loss of anticipated profits or benefits arising out of use of or reliance on the data.
 These data sets have been developed from the best available sources. Although efforts have been made to ensure that the datasets are accurate and reliable, errors and variable conditions originating from physical sources used to develop the data may be reflected in the data supplied.
This product is not intended to be used for navigation.
 Mariners are encouraged to use all prudent safety measures.



SHEET
 REFERENCE
 NUMBER
C003
 Page 38 of 39

2345000 79°52'30"W 2346000 2347000 2348000 79°52'0"W 2349000 2350000 79°51'30"W 2351000 2352000



3430000
3420000
3410000
3400000
3390000

3440000
3430000
3420000
3410000
3400000
3390000

2345000 79°52'30"W 2346000 2347000 339000 2348000 79°52'0"W 2349000 2350000 79°51'30"W 2351000 2352000

SHEET
REFERENCE
NUMBER
C003
Page 39 of 39

Atlantic Intercoastal Waterway (AIWW) Channel Survey
The information depicted on this map represents the results of surveys made on the dates indicated and can only be considered as indicating the general conditions existing at that time.
Concluded on: **10 OCT 2017**
Charleston, SC to Port Royal, SC

U.S. ARMY ENGINEER DISTRICT
CORPS OF ENGINEERS
CHARLESTON, SOUTH CAROLINA

SPATIAL DATA BRANCH
69A HAGOOD AVE
CHARLESTON, SC 29403
CESAC-GIS@USACE.ARMY.MIL

Designed By: **eHydro Software v3.82**
Reviewed By: **CCW**
Reference Scale: **1 inch = 500 feet**
Projection: **NAD 1983 StatePlane South Carolina FIPS 3900 Feet**

Survey Date: **10 OCT 2017**
Production Date: **12 OCT 2017**
Project Reference Number: **CESAC-PRA-0001**
Survey Type: **CONDITION**

Shoalest Sounding
Sounding
Sounding may cover several point areas and is calculated per reach quarter area
"+ " indicates sounding above MLLW

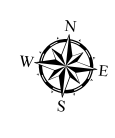
USCG Beacon
Green
Red
White

USCG Buoy
Green
Red
Coast Guard Racon

White
Yellow
USCG Light

Depth in feet
0-3 3 to 6 6 to 9 9 to 12 Greater Than 12

0 250 500 1,000 1,500 Feet



Production Notes:
1. The information depicted on this product is for plotting purposes only.
2. Vector hydrographic data derived from surveys conducted by the USACE and approved partners.
3. Soundings are in feet and refer to Mean Lower Low Water (MLLW).
4. Raster Background: ArcGIS Online Image Basemap dated 2010 - 2011.

In no event shall the U.S. Army Corps of Engineers, Charleston District Office, Spatial Data Branch be liable for direct, indirect, incidental, consequential or special damages of any kind, including, but not limited to, loss of anticipated profits or benefits arising out of use of or reliance on the data.
These data sets have been developed from the best available sources. Although efforts have been made to ensure that the datasets are accurate and reliable, errors and variable conditions originating from physical sources used to develop the data may be reflected in the data supplied.
This product is not intended to be used for navigation.
Mariners are encouraged to use all prudent safety measures.

