

R "2"
FIR 2.5s

2.5s

51

49

55

S Sh

55

45

54

53

Fort Sumter Reach

51

47

RW "C"
Mo (A)
RACON

56

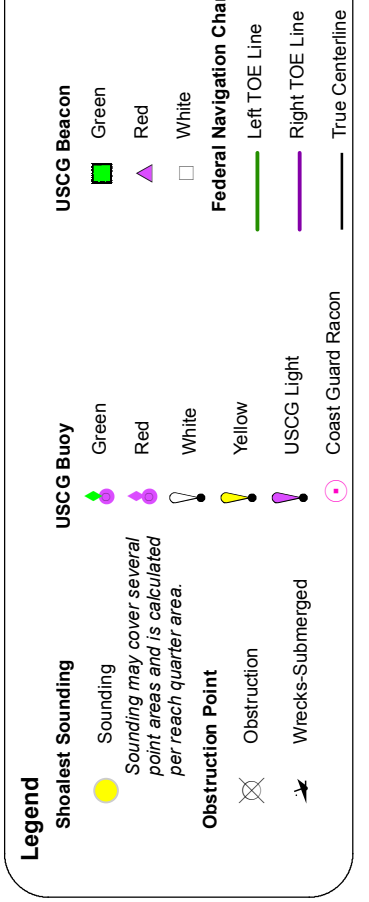
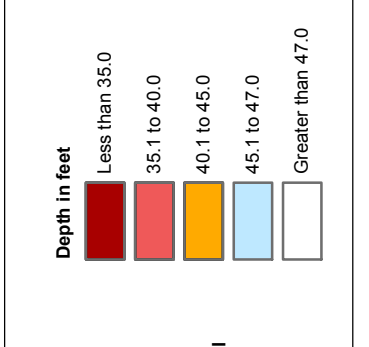
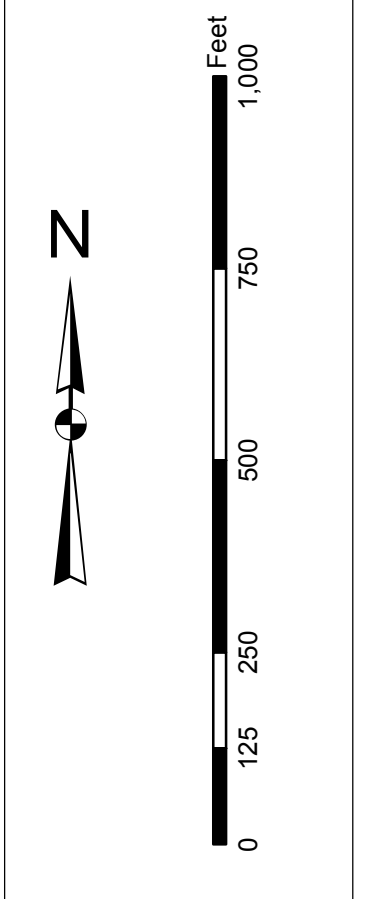
51

54

57

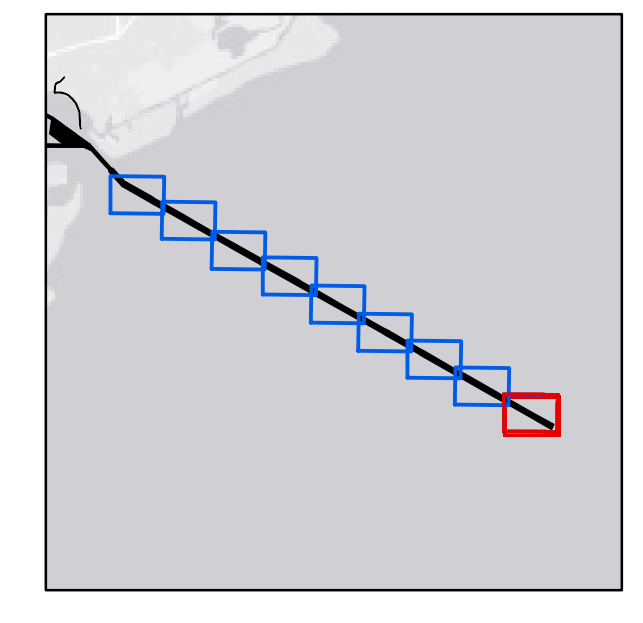
In accordance with the U.S. Army Corps of Engineers, Charleston District Office, Special Data Branch, the data for this project, including but not limited to, bathymetry, hydrography, and geospatial data, were collected and processed in accordance with the standards and procedures of the U.S. Army Corps of Engineers, Hydrographic Surveying and Hydrographic Engineering Center, and the U.S. Army Corps of Engineers, Hydrographic Surveying and Hydrographic Engineering Center, Charleston District Office. The data were processed and plotted in accordance with the standards and procedures of the U.S. Army Corps of Engineers, Hydrographic Surveying and Hydrographic Engineering Center, Charleston District Office. The data were processed and plotted in accordance with the standards and procedures of the U.S. Army Corps of Engineers, Hydrographic Surveying and Hydrographic Engineering Center, Charleston District Office. The data were processed and plotted in accordance with the standards and procedures of the U.S. Army Corps of Engineers, Hydrographic Surveying and Hydrographic Engineering Center, Charleston District Office.

Production Notes:
1. This is a preliminary map.
2. The data were collected and processed in accordance with the standards and procedures of the U.S. Army Corps of Engineers, Hydrographic Surveying and Hydrographic Engineering Center, Charleston District Office.
3. The data were processed and plotted in accordance with the standards and procedures of the U.S. Army Corps of Engineers, Hydrographic Surveying and Hydrographic Engineering Center, Charleston District Office.
4. The data were processed and plotted in accordance with the standards and procedures of the U.S. Army Corps of Engineers, Hydrographic Surveying and Hydrographic Engineering Center, Charleston District Office.
5. The data were processed and plotted in accordance with the standards and procedures of the U.S. Army Corps of Engineers, Hydrographic Surveying and Hydrographic Engineering Center, Charleston District Office.



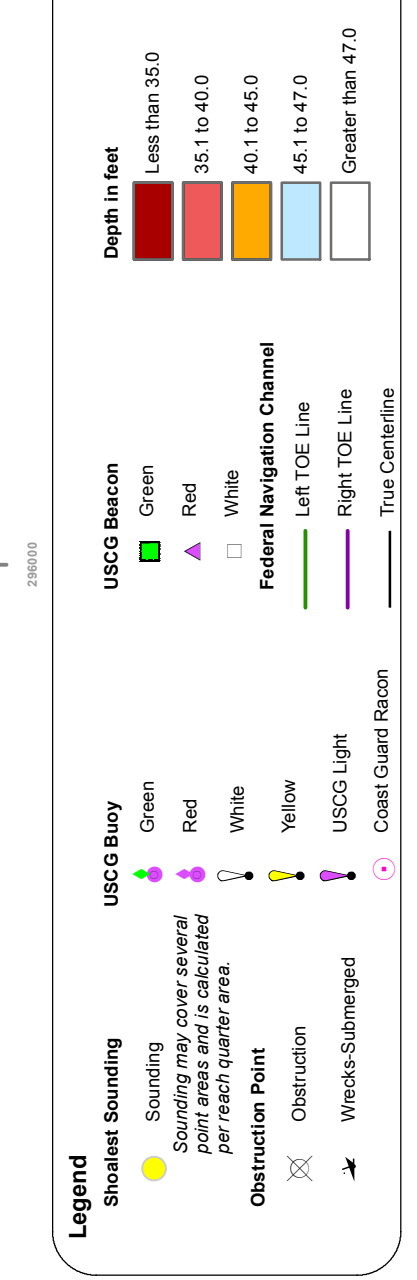
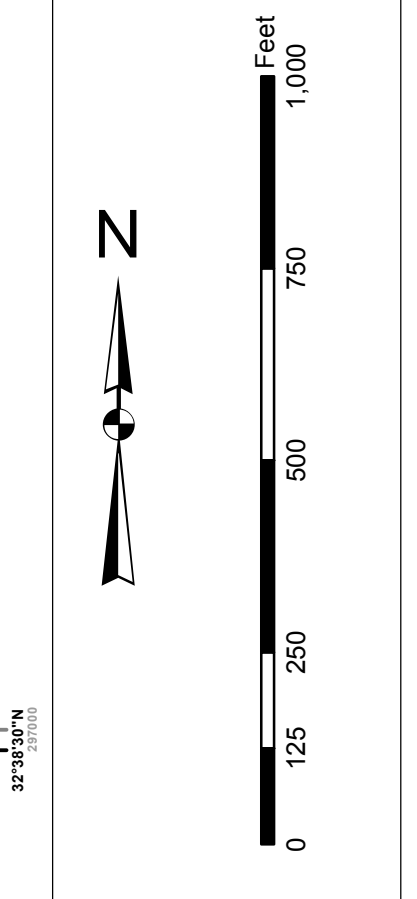
Designed By:	U.S. Army Corps of Engineers Charleston District Office	Survey Date:	01 DEC 2015	Production Date:	05 JAN 2016
Reviewed By:	U.S. Army Corps of Engineers Charleston District Office	Project Reference Number:	13000	Project Reference Number:	13000
Reference Scale:	1 inch = 250 feet	Scale:	1 inch = 250 feet	Scale:	1 inch = 250 feet
Projection:	NAD 1983 StatePlane South Carolina FIPS 3900 Feet Intl	Projection:	NAD 1983 StatePlane South Carolina FIPS 3900 Feet Intl	Projection:	NAD 1983 StatePlane South Carolina FIPS 3900 Feet Intl

Charleston Entrance Channel Survey
The information depicted on this map represents the results of surveys made on the dates indicated and can only be used for general information purposes. It is not to be used for navigation. Concluded on: DATE
Charleston, South Carolina



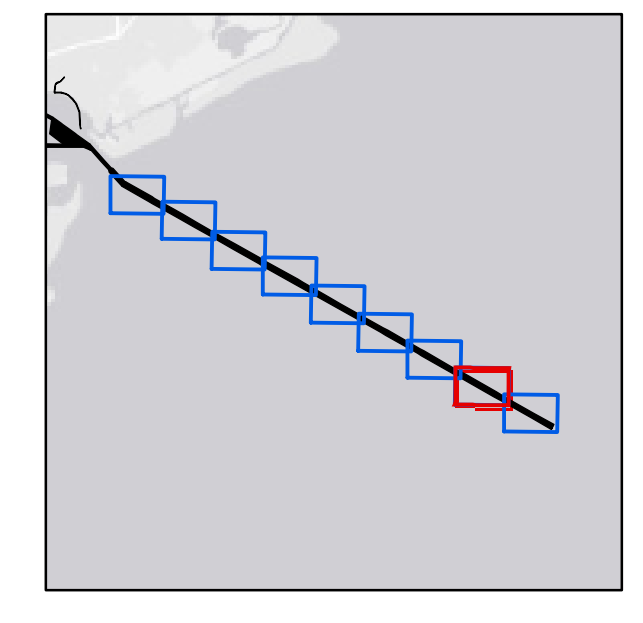
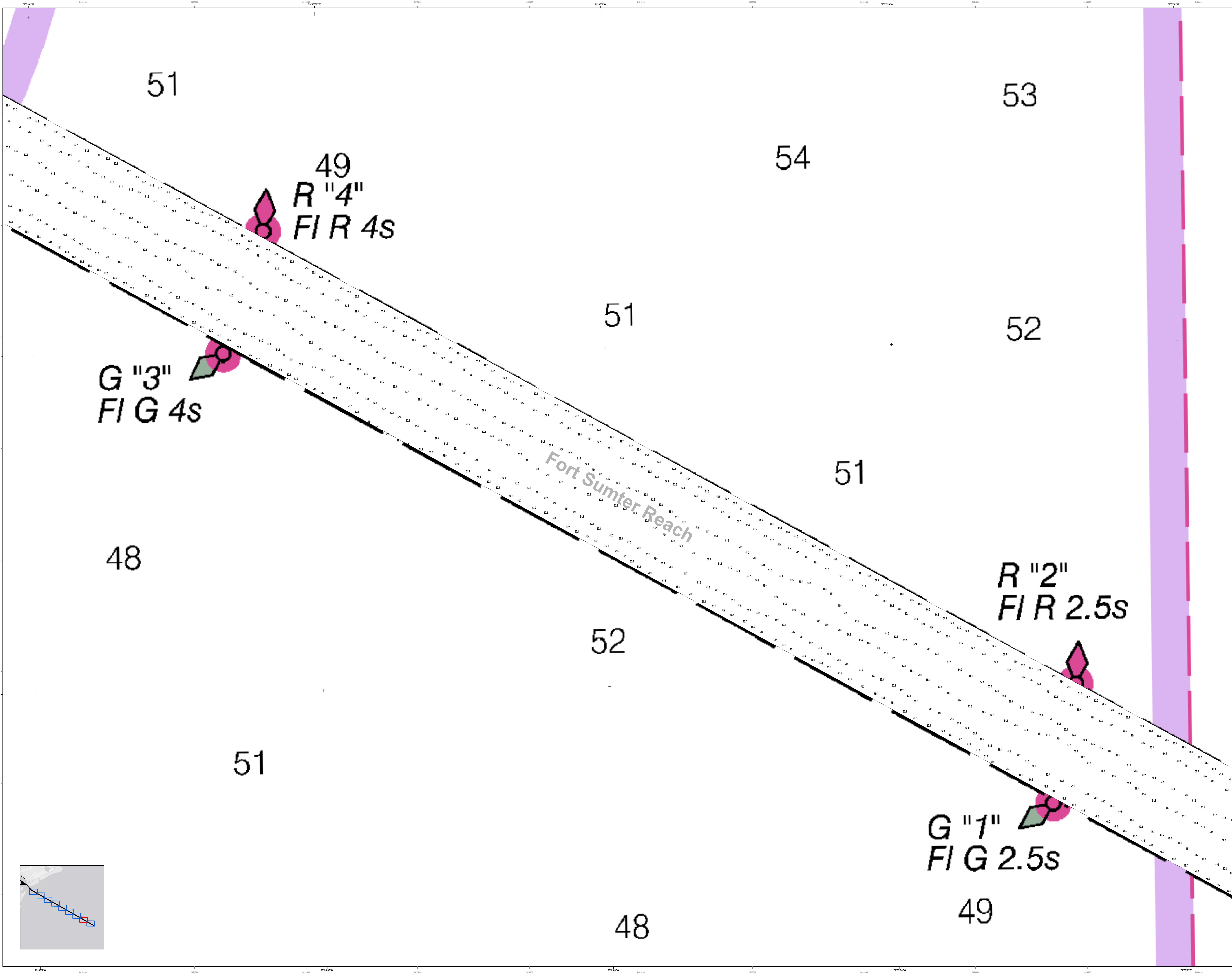
In its capacity as the U.S. Army Corps of Engineers, Charleston District Office, Special Data Branch has made this report, including but not limited to a list of annotated points or profiles, available for use by other agencies. These data have been developed from the best available information and are not intended to be used for navigation, construction, or other purposes. The user assumes all responsibility for the use of this information. The Corps does not warrant the accuracy or completeness of the data and is not liable for any damages resulting from the use of this information. Matters are encouraged to use all prudent safety measures.

Production Notes:
1. This is a preliminary report.
2. The data were collected by the Special Data Branch.
3. The data were collected by the Special Data Branch.
4. The data were collected by the Special Data Branch.
5. The data were collected by the Special Data Branch.
6. The data were collected by the Special Data Branch.
7. The data were collected by the Special Data Branch.
8. The data were collected by the Special Data Branch.
9. The data were collected by the Special Data Branch.
10. The data were collected by the Special Data Branch.



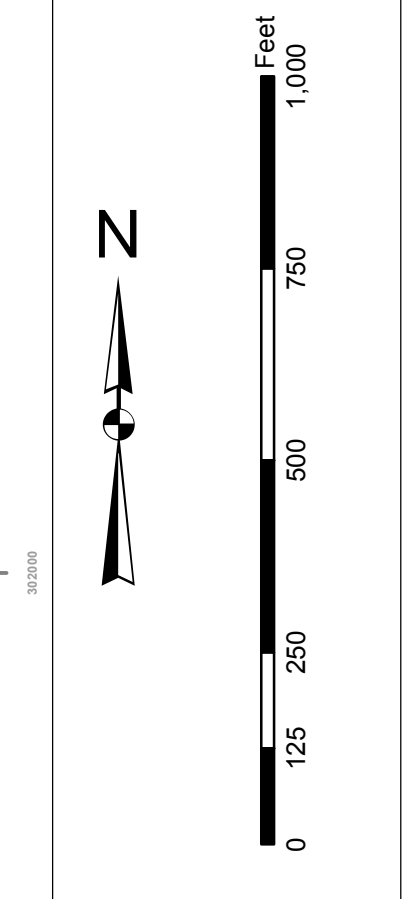
U.S. Army Corps of Engineers Charleston District Special Data Branch Charleston, SC 29403 CESAC-GIS@USACE.ARMY.MIL	Designed By: Hydro Software v3.82 Reviewed By: T. J. JOYD Reference Scale: 1 inch = 250 feet Projection: NAD 1983 StatePlane South Carolina FIPS 3900 Feet Intl	Survey Date: 01 DEC 2015 Project Reference Number: PC00010 Survey Type: Condition	Production Date: 05 JAN 2016
--	--	--	---------------------------------

Charleston Entrance Channel Survey
The information depicted on this map represents the results of surveys made on the dates indicated and can only be used for general information purposes. Concluded on: DATE
Charleston, South Carolina



In its capacity as the U.S. Army Corps of Engineers, Charleston District Office, Special Data Branch has made the best effort to ensure that the information depicted on this map represents the results of surveys made on the dates indicated and can only be used for the purposes stated. No general liability is assumed for any use of the information other than that for which it was intended. The information is provided as a general reference and should not be used for any other purpose. The information is provided as a general reference and should not be used for any other purpose. The information is provided as a general reference and should not be used for any other purpose.

Production Notes:
1. This map is a photographic reproduction of the original drawing.
2. All dimensions are in feet and inches.
3. All bearings are true bearings.
4. All distances are in feet.
5. All bearings are true bearings.
6. All distances are in feet.
7. All bearings are true bearings.
8. All distances are in feet.



Legend

Shaded Areas

- Dark Blue: 100% Wetland
- Light Blue: 75% Wetland
- Yellow: 50% Wetland
- Orange: 25% Wetland
- Red: 0% Wetland

Used Features

- Black: Boundary
- Green: Right-of-Way
- Blue: Water
- Red: Easement
- Yellow: Flood Hazard
- White: Other

Utility Lines

- Black: Power Line
- Red: Gas Line
- Blue: Sewer Line
- Green: Water Line
- Yellow: Telephone Line
- White: Other

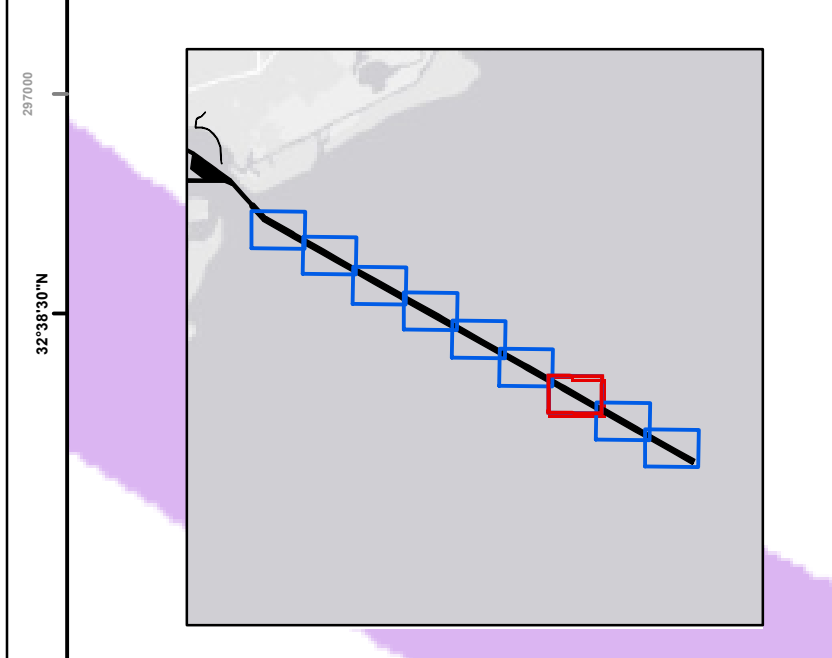
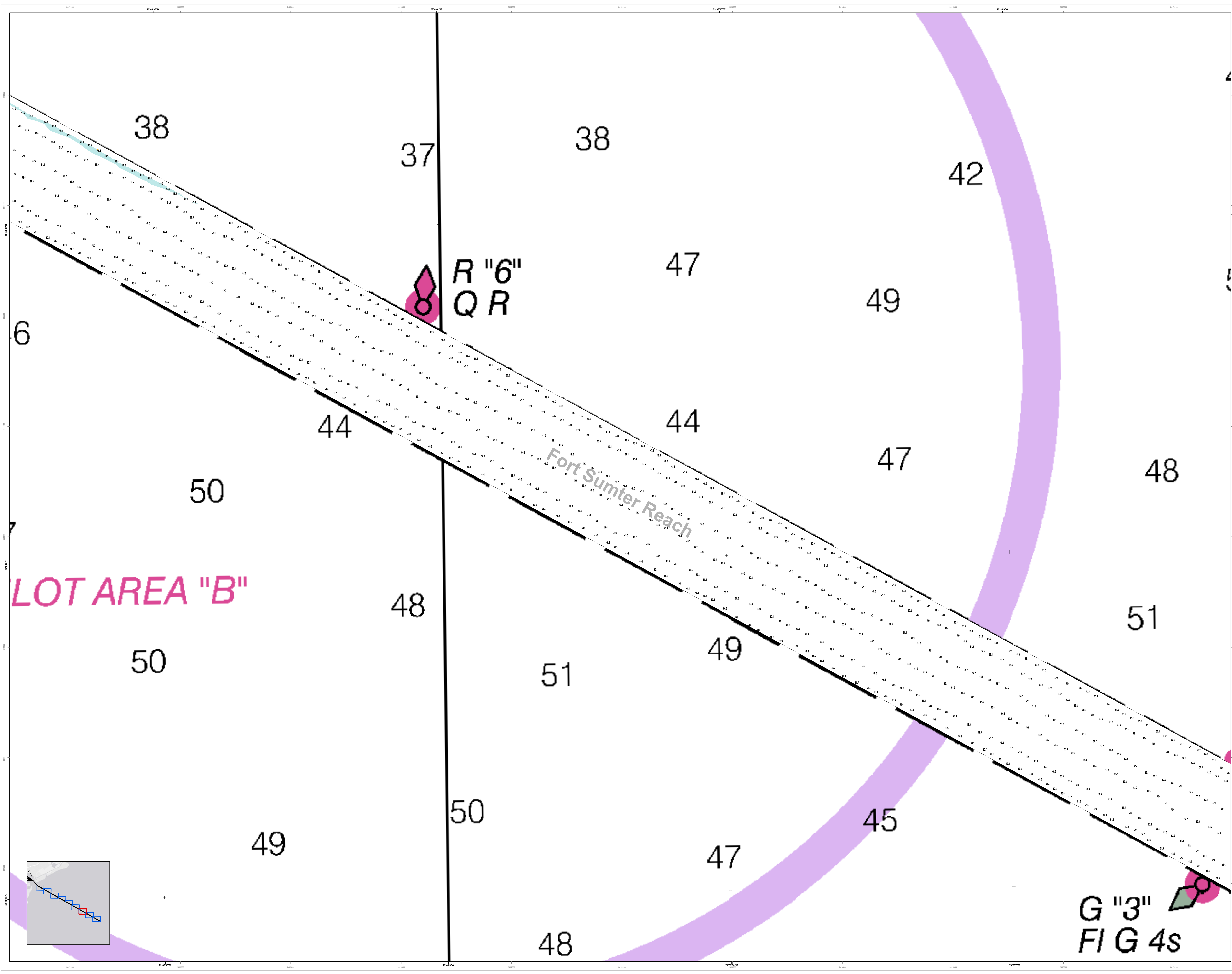
Structural Features

- Black: Building Footprint
- Red: Wall
- Blue: Roof
- Green: Deck
- Yellow: Staircase
- White: Other

U.S. Army Corps of Engineers Charleston District Office Special Data Branch Charleston, SC 29403 CESAC-GIS@USACE.ARMY.MIL	Designed By: Jethro Software v3.82 Reviewed By: Jethro Software v3.82 Scale: 1" = 250' Projection: NAD 1983 StatePlane South Carolina FIPS 3900 Feet Intl	Survey Date: 01 DEC 2015 Project Reference Number: 150300 Sheet Type: C002 Condition: Final	Production Date: 02 JAN 2016 Project Reference Number: 150300 Sheet Type: C002 Condition: Final
---	--	--	--

Charleston Entrance Channel Survey
The information depicted on this map represents the results of surveys made on the dates indicated and can only be used for the purposes stated. No general liability is assumed for any use of the information other than that for which it was intended. The information is provided as a general reference and should not be used for any other purpose. The information is provided as a general reference and should not be used for any other purpose. The information is provided as a general reference and should not be used for any other purpose.

Concluded on: DATE
Charleston, South Carolina



LOT AREA "B"

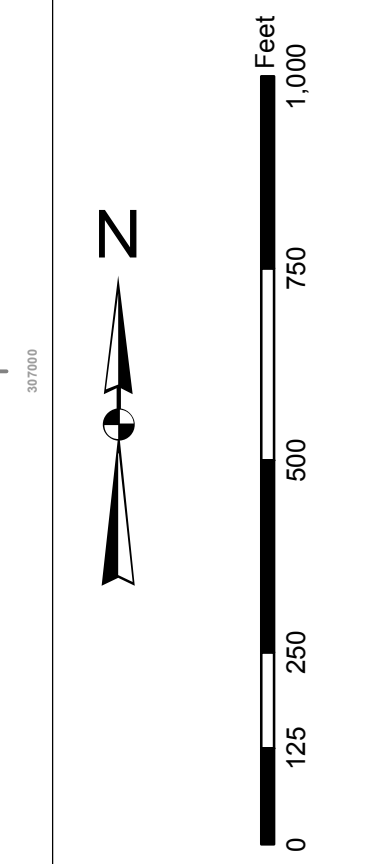
**R "6"
QR**

**G "3"
FIG 4s**

Fort Sumter Reach

In its capacity as the U.S. Army Corps of Engineers, Charleston District Office, Special Data Branch has made this report, including the data and information contained herein, available to the public. This information is provided for informational purposes only and is not intended to be used for any purpose other than that for which it was originally intended. The Corps does not warrant the accuracy or completeness of the information provided herein and is not responsible for any errors or omissions. The user assumes all liability for any use of this information. The information is provided as is and is not to be used for navigation. The information is provided for informational purposes only and is not intended to be used for any purpose other than that for which it was originally intended.

Production Notes:
1. This map is a photographic reproduction of the original map.
2. The map is not to be used for navigation.
3. The map is not to be used for any other purpose.
4. The map is not to be used for any other purpose.
5. The map is not to be used for any other purpose.



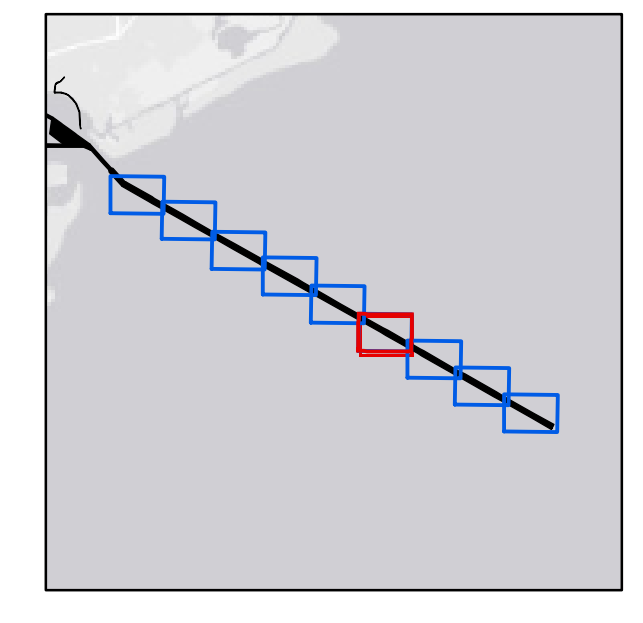
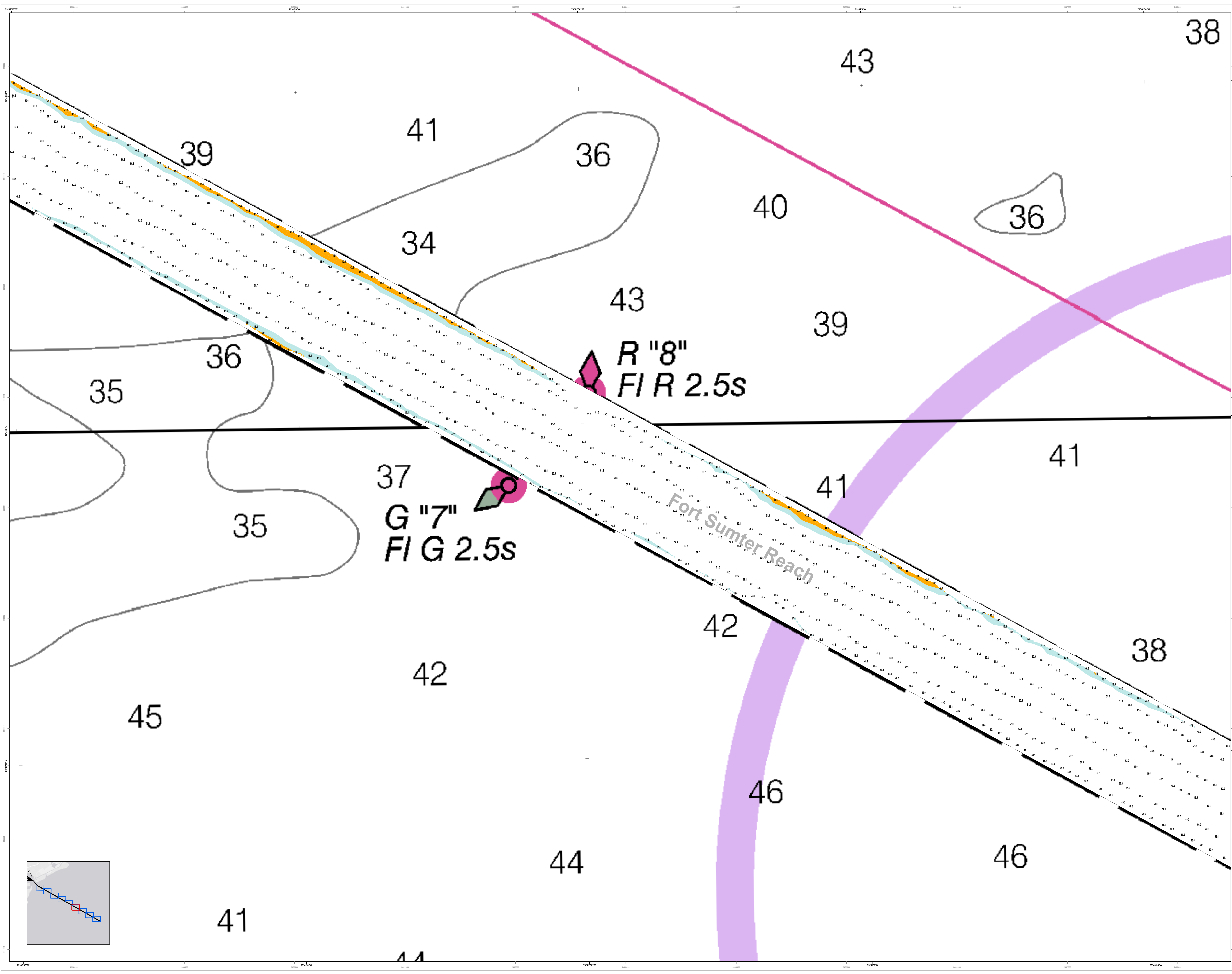
Legend

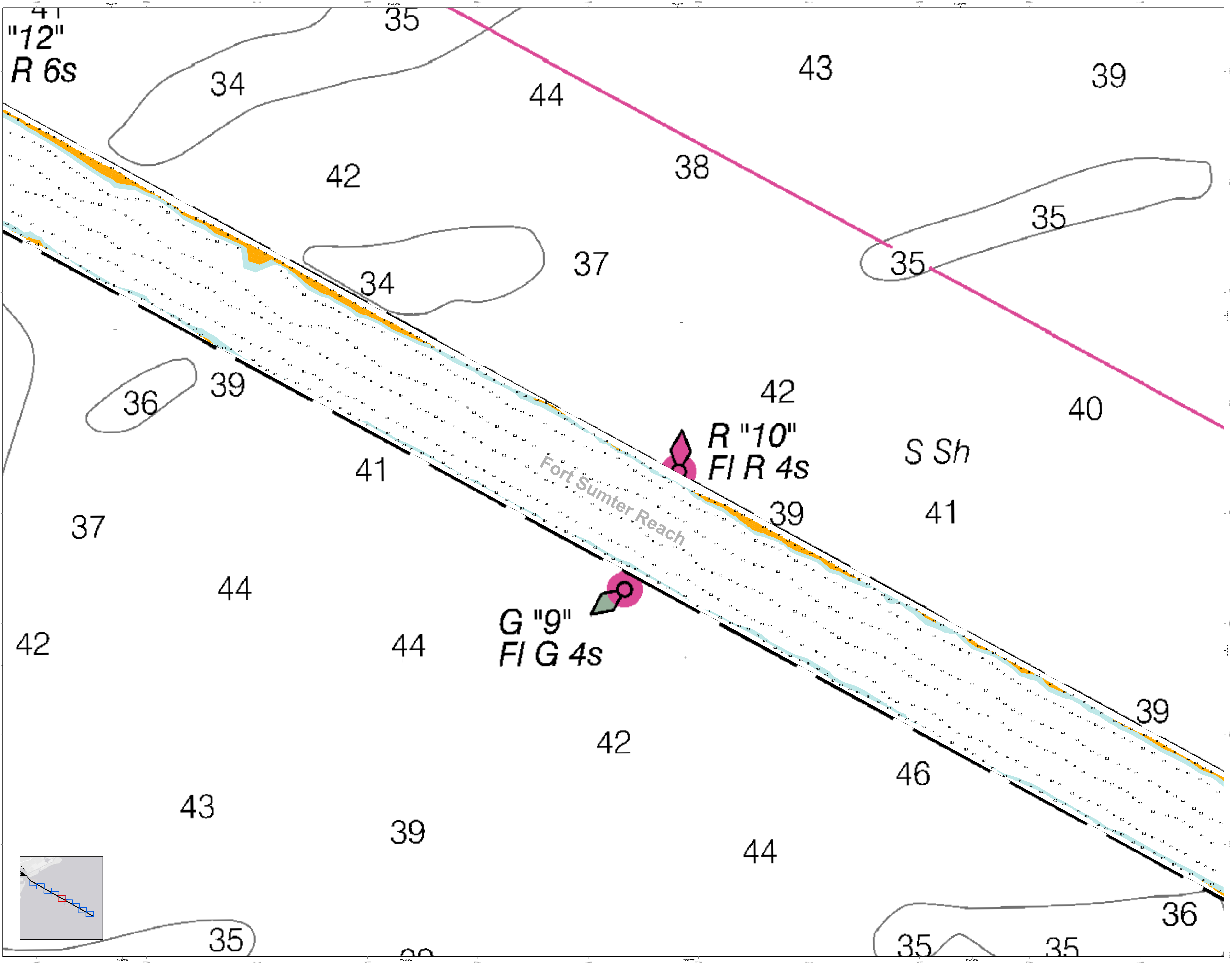
- Dark Water**
 - Dark Water
 - Shallow Water
 - Very Shallow Water
 - Very Shallow Water
 - Very Shallow Water
- Used Bottom**
 - Used Bottom
 - Used Bottom
 - Used Bottom
 - Used Bottom
 - Used Bottom
- USC Bay**
 - USC Bay
 - USC Bay
 - USC Bay
 - USC Bay
 - USC Bay
- Shaded Shading**
 - Shaded Shading
 - Shaded Shading
 - Shaded Shading
 - Shaded Shading
 - Shaded Shading

U.S. Army Corps of Engineers Charleston District Office Special Data Branch Charleston, SC 29403 CESAC-GIS@USACE.ARMY.MIL	Designed By: Hydro Software v3.82	Survey Date: 01 DEC 2015	Production Date: 05 JAN 2016
	Reviewed By: T. S. 2000	Project Reference Number: P000010	
	Reference Scale: 1 inch = 250 feet	Survey Type: Condition	
	Projection: NAD 1983 StatePlane South Carolina FIPS 3900 Feet Intl		

Charleston Entrance Channel Survey
The information depicted on this map represents the results of surveys made on the dates indicated and can only be used for general information. The information is provided as is and is not to be used for navigation. The information is provided for informational purposes only and is not intended to be used for any purpose other than that for which it was originally intended.

Concluded on: DATE
Charleston, South Carolina

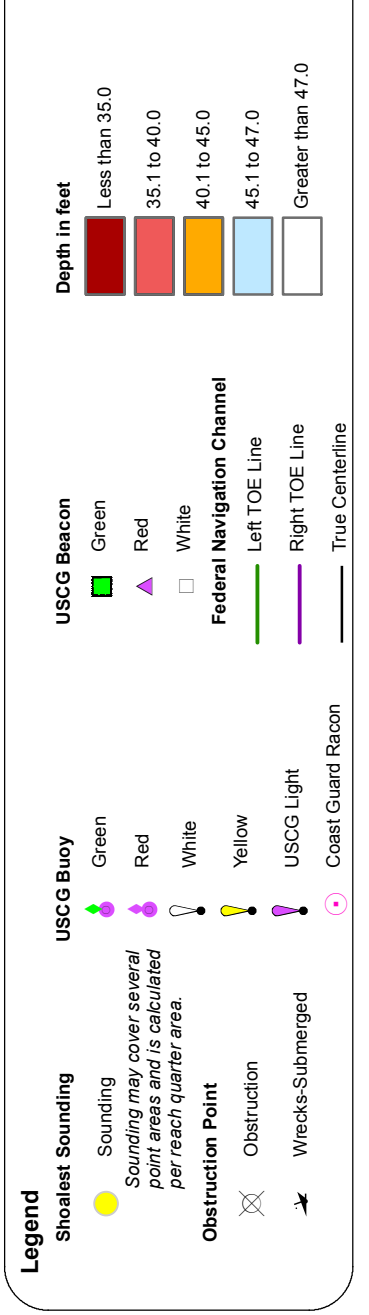
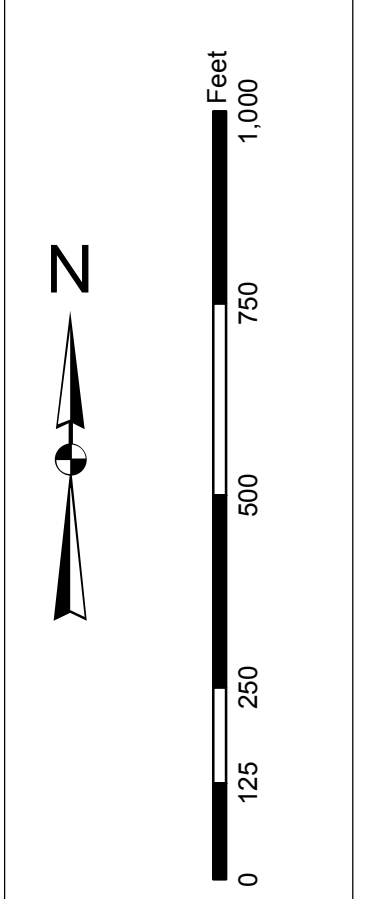




In its use of the U.S. Army Corps of Engineers, Charleston District Office, Special Data Search, the user is advised that the information is for informational purposes only and is not intended to be used for navigation. The user is advised that the information is not intended to be used for navigation. The user is advised that the information is not intended to be used for navigation.

Production Notes:

1. This chart was produced using the following data:
2. Soundings are in feet and meters.
3. Contours are in feet and meters.
4. All depths are based on Mean Lower Low Water (MLLW).
5. Meters are rounded to the nearest millimeter.

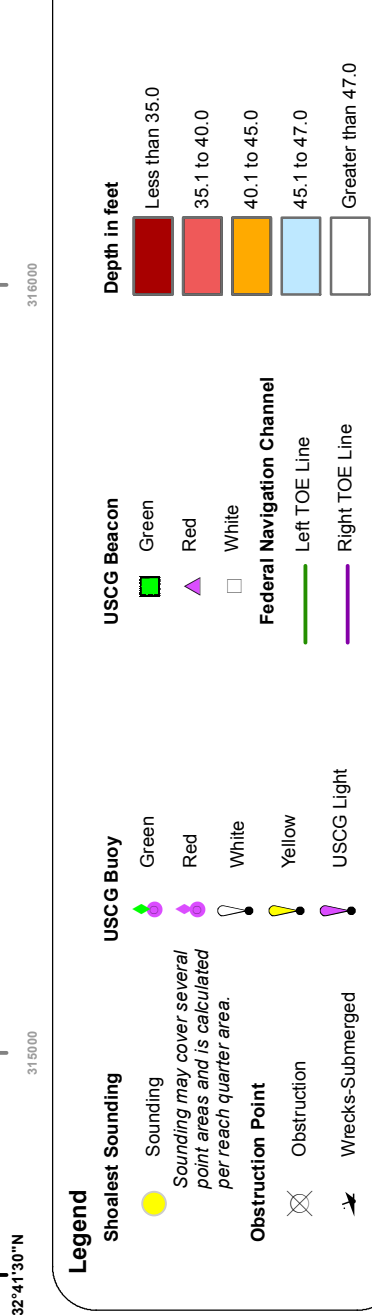
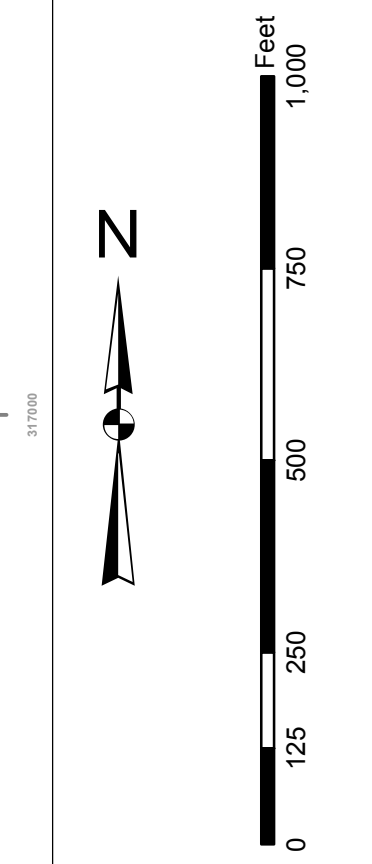


Designed By: Hydro Software v3.82	Survey Date: 01 DEC 2015	Production Date: 05 JAN 2016
Reviewed By: ALABAMA STATE	Project Reference Number: 13000	Project Reference Number: 13000
Reference Scale: 1 inch = 250 feet	Survey Type: Condition	Survey Type: Condition
Projection: NAD 1983 StatePlane South Carolina FIPS 3900 Feet Intl	U.S. Army Corps of Engineers Charleston District Savannah Branch Birmingham Charleston, SC 29403	U.S. Army Corps of Engineers Charleston District Savannah Branch Birmingham Charleston, SC 29403

Charleston Entrance Channel Survey
The information depicted on this map represents the results of surveys made on the dates indicated and can only be used for general information purposes.
Concluded on: DATE
Charleston, South Carolina

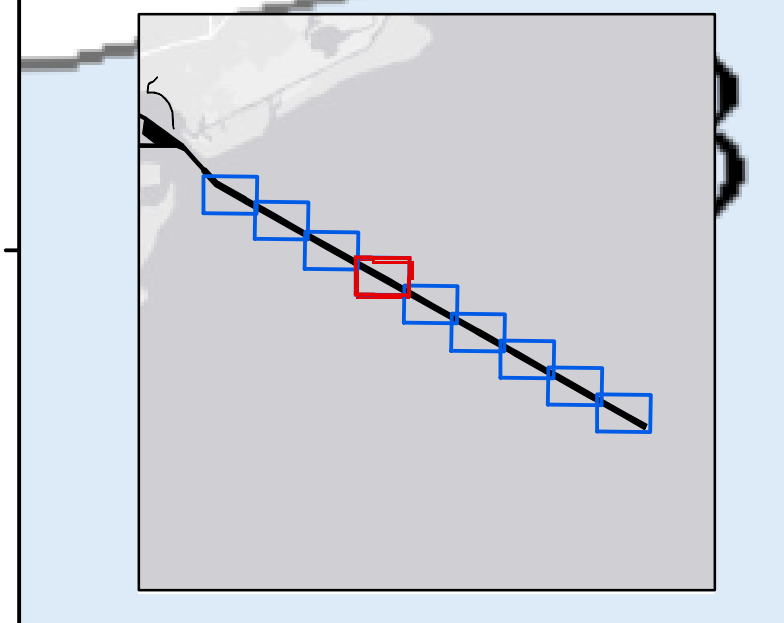
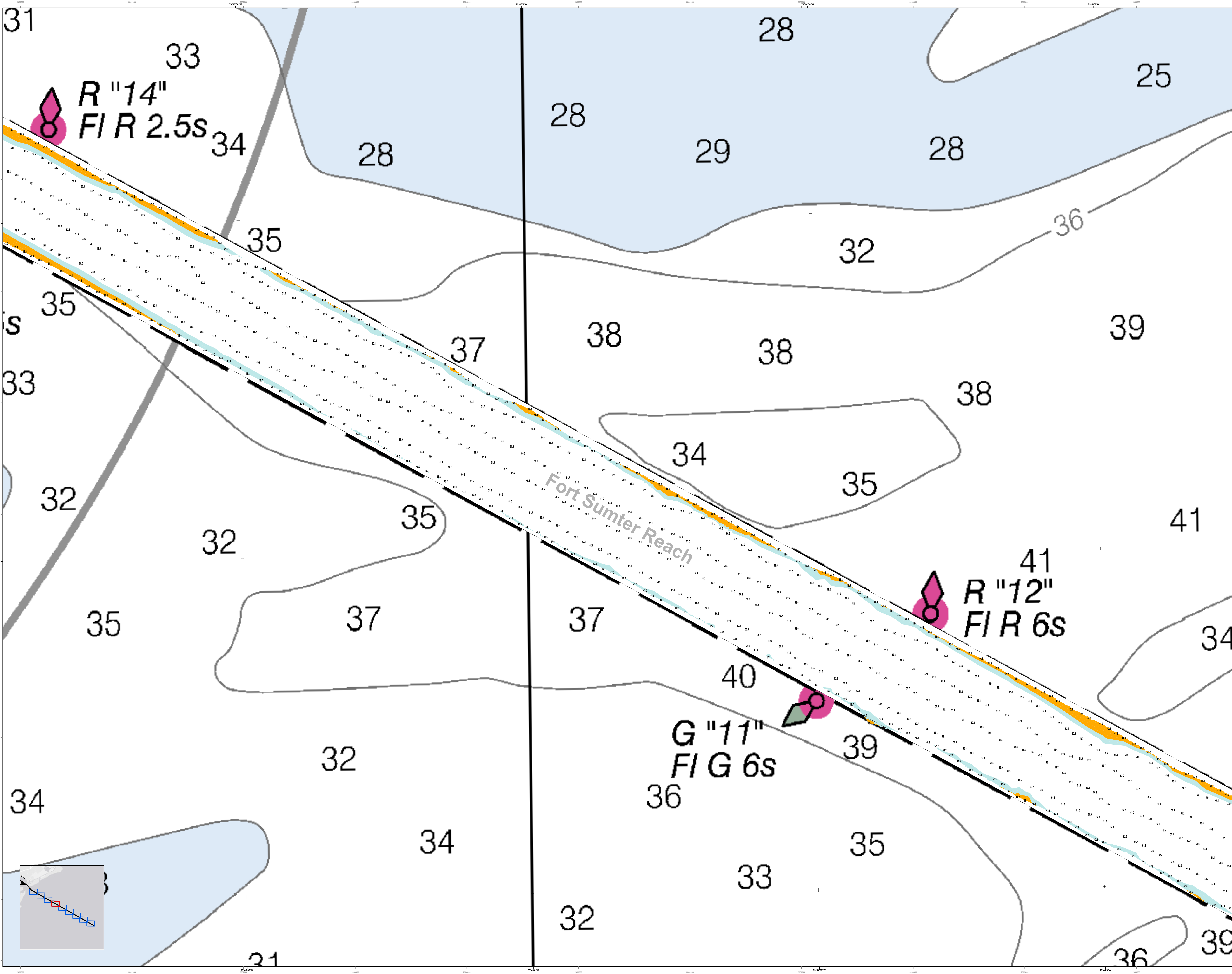
In its capacity as the U.S. Army Corps of Engineers, Charleston District Office, Special Data Branch has made this report, including the data and information contained herein, available to the public. It is intended to be used for informational purposes only and is not intended to be used for any other purpose. The data and information contained herein are not intended to be used for any other purpose. The data and information contained herein are not intended to be used for any other purpose.

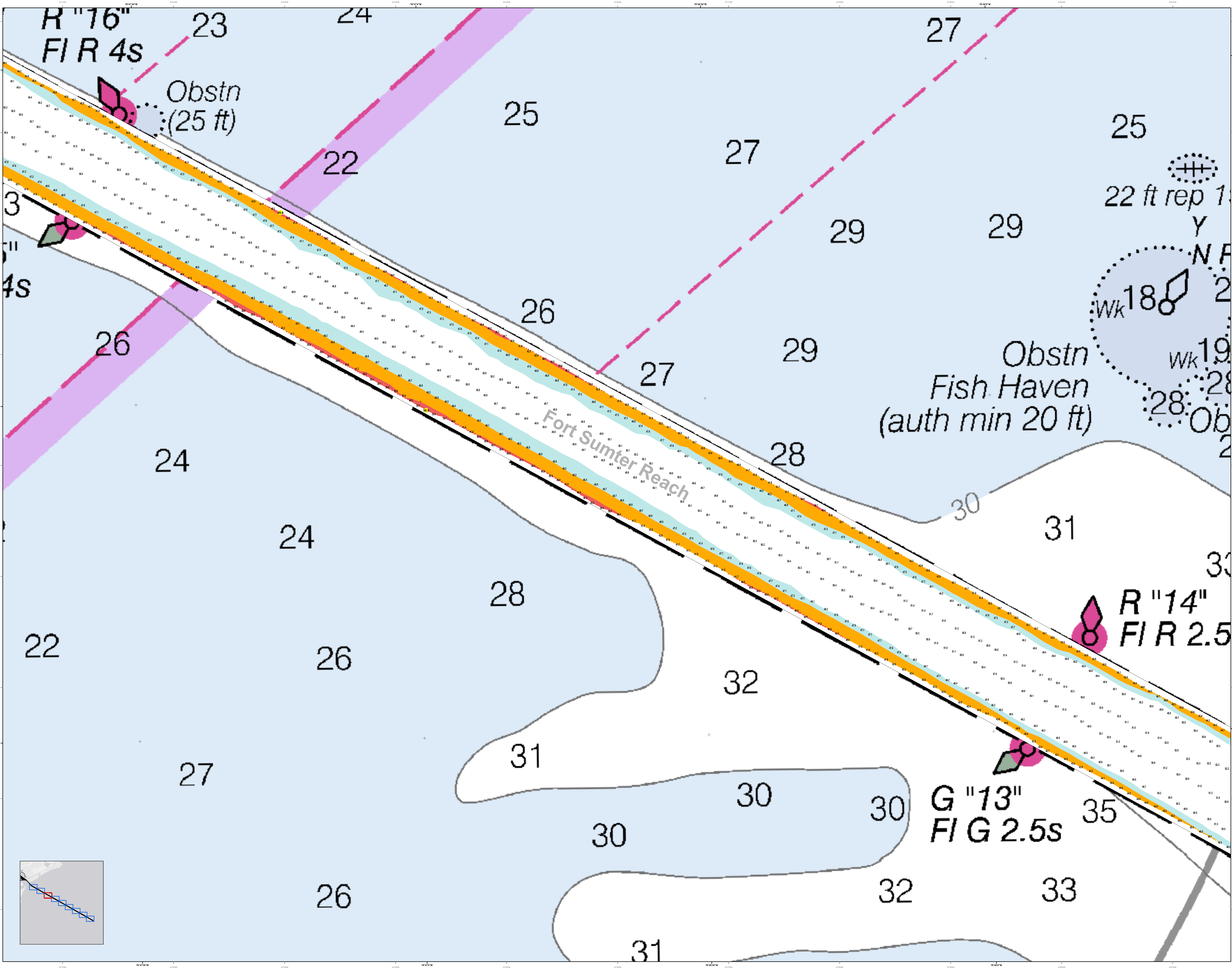
Production Notes:
1. This map is a preliminary map.
2. This map is not a final map.
3. This map is not a final map.



Designed By:	U.S. Army Corps of Engineers Charleston District Office Special Data Branch	Production Date:	01 DEC 2015
Reviewed By:	U.S. Army Corps of Engineers Charleston District Office Special Data Branch	Project Reference Number:	PC00010
Reference Scale:	1 inch = 250 feet	Survey Type:	Channel
Projection:	NAD 1983 StatePlane South Carolina FIPS 3900 Feet Intl	Condition:	

Charleston Entrance Channel Survey
The information depicted on this map represents the results of surveys made on the dates indicated and call only on the conditions existing at that time.
Concluded on: DATE
Charleston, South Carolina





U.S. Army Corps of Engineers
 Charleston District

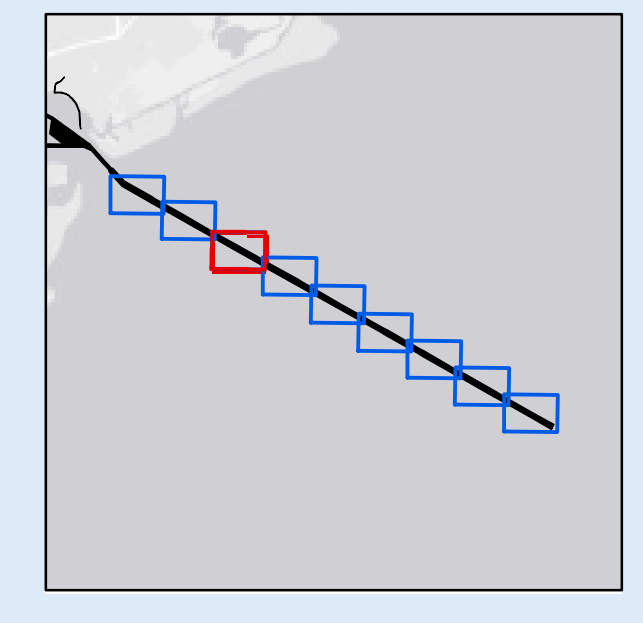
Production Notes:
 1. This chart is a hydrographic chart.
 2. It is based on the most recent available data.
 3. There are no known obstructions in this area.
 4. The chart is subject to change without notice.
 5. Mariners are encouraged to use all prudent safety measures.

Legend:
 Depth Soundings: 1-30, 31-40, 41-50, 51-60, 61-70, 71-80, 81-90, 91-100
 Obstructions: 1-10, 11-20, 21-30, 31-40, 41-50, 51-60, 61-70, 71-80, 81-90, 91-100
 Navigational Aids: 1-10, 11-20, 21-30, 31-40, 41-50, 51-60, 61-70, 71-80, 81-90, 91-100
 Channel: 1-10, 11-20, 21-30, 31-40, 41-50, 51-60, 61-70, 71-80, 81-90, 91-100
 Obstruction: 1-10, 11-20, 21-30, 31-40, 41-50, 51-60, 61-70, 71-80, 81-90, 91-100

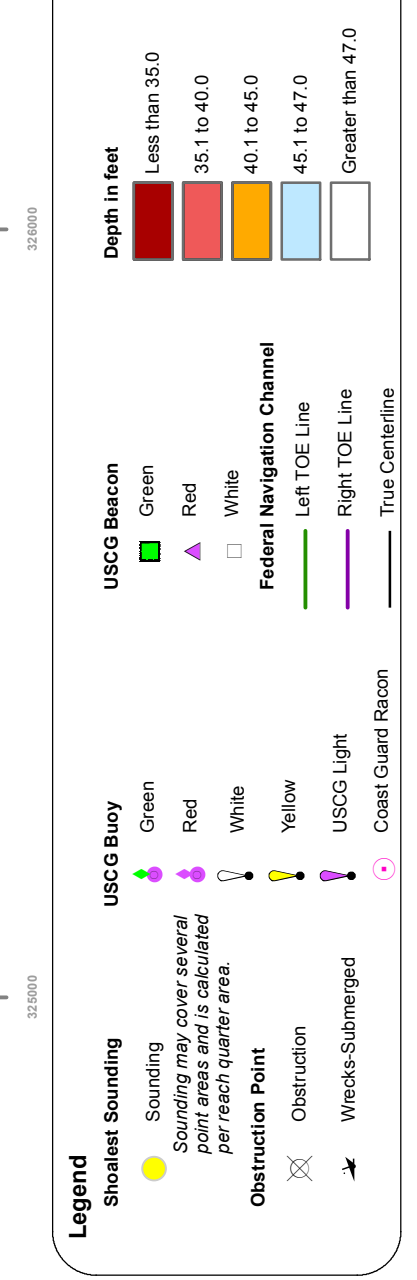
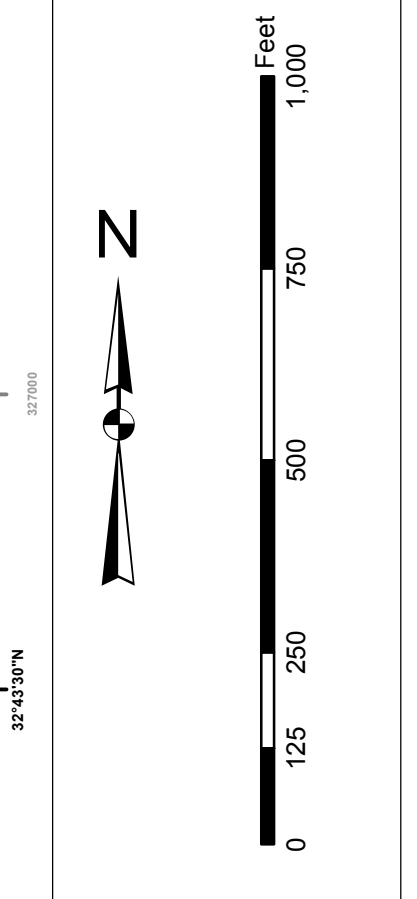
Designed By:	U.S. Army Corps of Engineers	Survey Date:	01 DEC 2015	Production Date:	05 JAN 2016
Reviewed By:	U.S. Army Corps of Engineers	Project Reference Number:	PC00010	Project Reference Number:	PC00010
Reference Scale:	1:50,000	Scale:	1 inch = 250 feet	Scale:	1 inch = 250 feet
Projection:	NAD 1983 StatePlane South Carolina FIPS 3900 Feet Intl	Projection:	NAD 1983 StatePlane South Carolina FIPS 3900 Feet Intl	Projection:	NAD 1983 StatePlane South Carolina FIPS 3900 Feet Intl

Charleston Entrance Channel Survey
 The information depicted on this map represents the results of surveys made on the dates indicated and can only be used for general information purposes.
 Concluded on: DATE
 Charleston, South Carolina

SHEET REFERENCE NUMBER: C002
 SHEET 7 OF 9

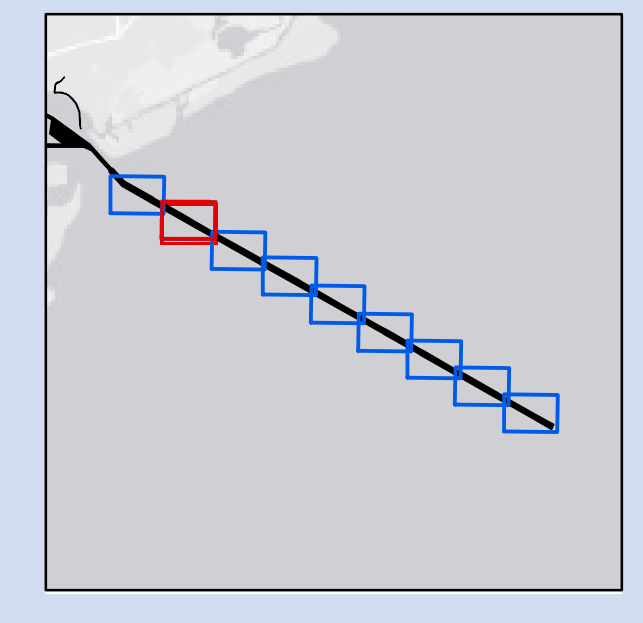
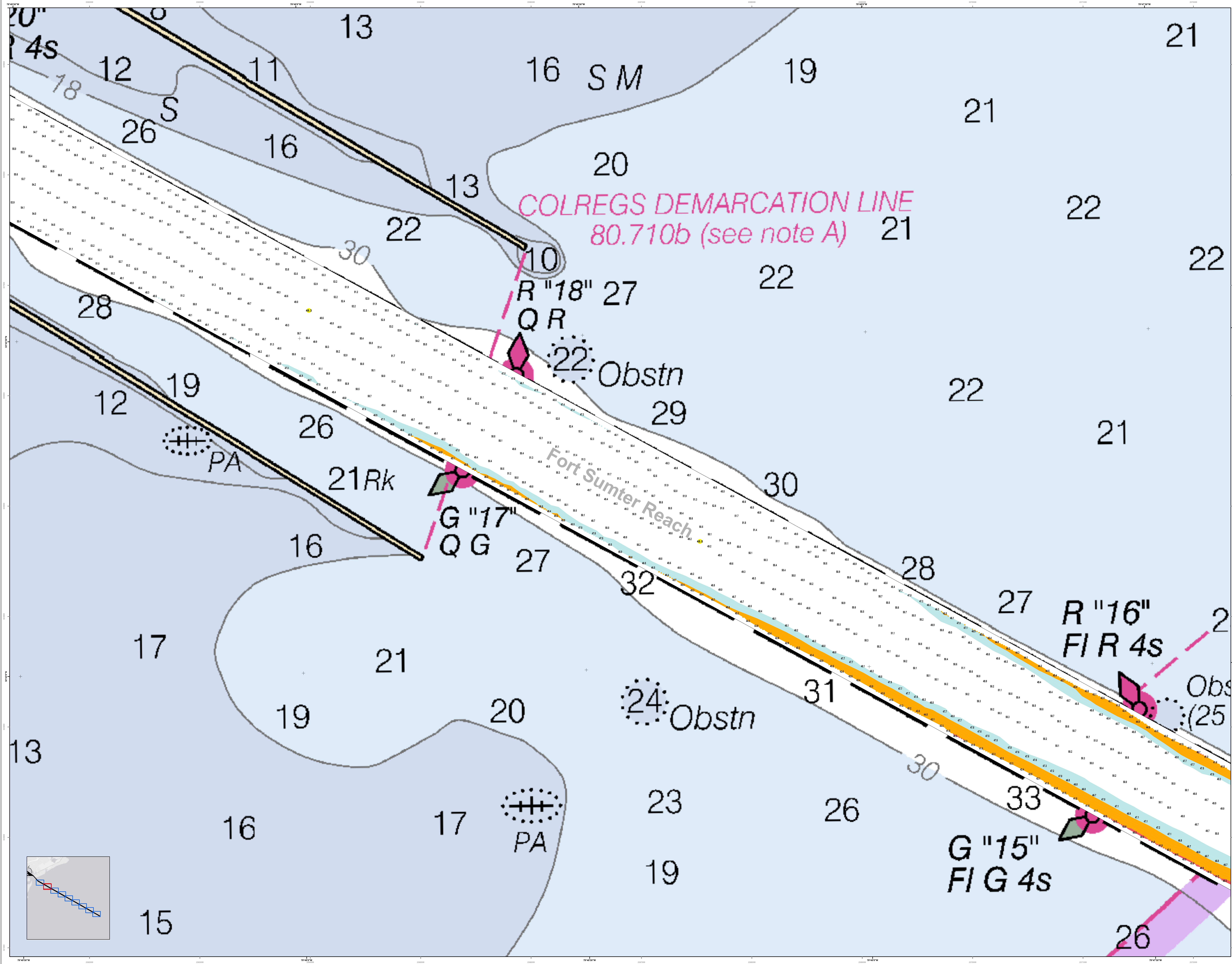


Production Notes:
 1. This map is a hydrographic chart showing the results of a survey conducted by the U.S. Army Corps of Engineers, Charleston District, in accordance with the provisions of the Hydrographic Act of 1906, as amended.
 2. The data shown on this map were derived from the best available information at the time of publication.
 3. Changes in the position of the demarcation line and other features are subject to change and should be used for navigation purposes only.
 4. The U.S. Army Corps of Engineers, Charleston District, is not responsible for any errors or omissions in this map or for any consequences arising from its use.
 5. The U.S. Army Corps of Engineers, Charleston District, is not responsible for any damage to property or injury to persons resulting from the use of this map.



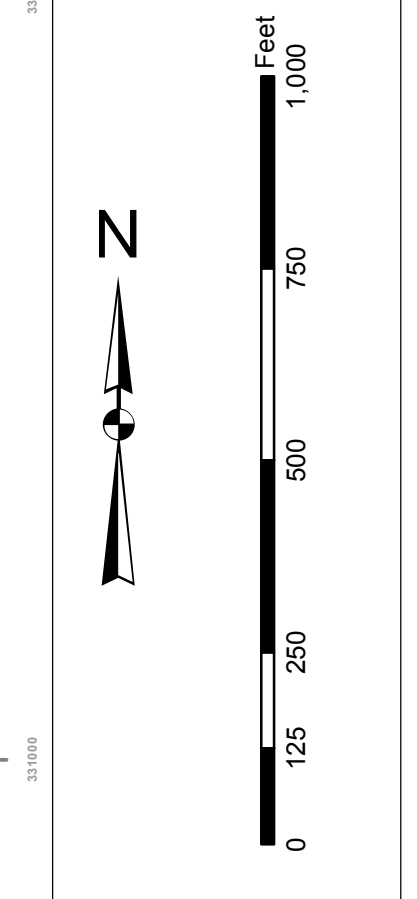
U.S. Army Corps of Engineers Charleston District Savannah Branch Barracks Charleston, SC 29403 CESAC-GIS@USACE.ARMY.MIL	Designed By: Hydro Software v3.82 Reviewed By: 1:15,000 1 inch = 250 feet Projection: NAD 1983 StatePlane South Carolina FIPS 3900 Feet Intl	Survey Date: 01 DEC 2015 05 JAN 2016 Project Reference Number: 15C00010 Survey Type: Condition	Production Date: 05 JAN 2016 Project Reference Number: 15C00010
--	--	--	--

Charleston Entrance Channel Survey
 The information depicted on this map represents the results of surveys made on the dates indicated and call only on the conditions existing at that time.
 Concluded on: DATE
 Charleston, South Carolina



In accordance with the U.S. Army Corps of Engineers, Charleston District Office, Special Data Branch, the data for this project, including but not limited to, bathymetry, hydrography, and other data, were collected from the following sources:
1. Bathymetry data were collected from the bathymetry survey conducted by the Charleston District Office, Special Data Branch, in 2015.
2. Hydrography data were collected from the hydrography survey conducted by the Charleston District Office, Special Data Branch, in 2015.
3. Other data were collected from the Charleston District Office, Special Data Branch, in 2015.
The data were processed and plotted in accordance with the U.S. Army Corps of Engineers, Charleston District Office, Special Data Branch, plotting standards. The data were plotted on a grid with a 10-foot interval. The data were plotted on a grid with a 10-foot interval. The data were plotted on a grid with a 10-foot interval.

Production Notes:
1. This is a preliminary chart and should not be used for navigation.
2. The data were collected from the bathymetry survey conducted by the Charleston District Office, Special Data Branch, in 2015.
3. The data were collected from the hydrography survey conducted by the Charleston District Office, Special Data Branch, in 2015.
4. The data were collected from the other data survey conducted by the Charleston District Office, Special Data Branch, in 2015.
5. The data were plotted on a grid with a 10-foot interval.
6. The data were plotted on a grid with a 10-foot interval.
7. The data were plotted on a grid with a 10-foot interval.



Legend

Soundings: 1-10 (Shallow), 11-20 (Medium), 21-30 (Deep), 31-40 (Very Deep)

Obstructions: 1 (Obstn), 2 (Obstn), 3 (Obstn), 4 (Obstn), 5 (Obstn), 6 (Obstn), 7 (Obstn), 8 (Obstn), 9 (Obstn), 10 (Obstn), 11 (Obstn), 12 (Obstn), 13 (Obstn), 14 (Obstn), 15 (Obstn), 16 (Obstn), 17 (Obstn), 18 (Obstn), 19 (Obstn), 20 (Obstn), 21 (Obstn), 22 (Obstn), 23 (Obstn), 24 (Obstn), 25 (Obstn), 26 (Obstn), 27 (Obstn), 28 (Obstn), 29 (Obstn), 30 (Obstn), 31 (Obstn), 32 (Obstn), 33 (Obstn), 34 (Obstn), 35 (Obstn), 36 (Obstn), 37 (Obstn), 38 (Obstn), 39 (Obstn), 40 (Obstn)

Other Symbols: G (Light), R (Light), F (Light), S (Light), Wk (Light), Rep (Light), Sh (Light), Subm (Light), North Jetty, South Jetty, Fort Sumter Reach, Mount Pleasant Reach

U.S. Army Corps of Engineers Charleston District Office Special Data Branch Charleston, SC 29405	DESIGNED BY: Hydro Software v3.82 Reviewed By: T. S. 2015 Reference Scale: 1 inch = 250 feet Projection: NAD 1983 StatePlane South Carolina FIPS 3900 Feet Intl	Survey Date: 01 DEC 2015 (05 JAN 2016) Project Reference Number: 150300 Survey Type: Condition	Production Date: 05 JAN 2016 Project Reference Number: 150300 Survey Type: Condition
---	--	---	---

Charleston Entrance Channel Survey
The information depicted on this map represents the results of surveys made on the dates indicated and can only be used for the purposes stated. The general location of the survey is shown on the map.
Concluded on: DATE
Charleston, South Carolina

