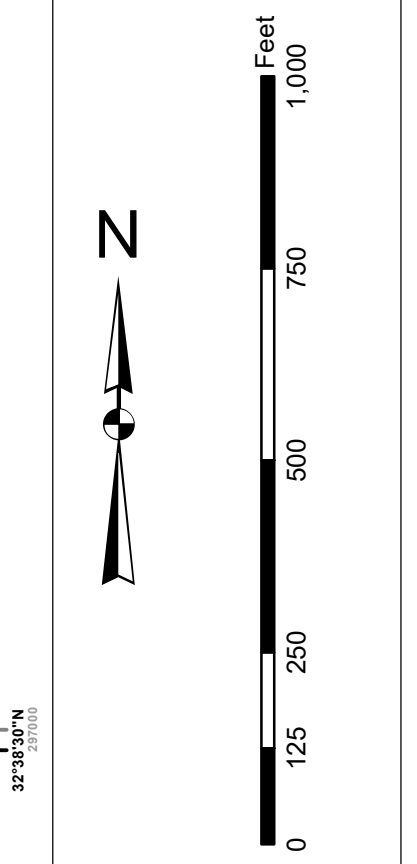


In accordance with the U.S. Army Corps of Engineers, Charleston District Office, Special Data Access Policy, the information shown on this map is for informational purposes only and is not intended to be used for navigation. The information shown on this map is based on the best available data and is not guaranteed to be accurate. Users are advised to use appropriate caution when using this information for navigation. No warranty is made for the use of this information for navigation. The information shown on this map is not intended to be used for navigation. The information shown on this map is based on the best available data and is not guaranteed to be accurate. Users are advised to use appropriate caution when using this information for navigation. No warranty is made for the use of this information for navigation.

Production Notes:
 1. This map is for informational purposes only.
 2. Users are advised to use appropriate caution when using this information for navigation.
 3. The information shown on this map is not intended to be used for navigation.
 4. The information shown on this map is based on the best available data and is not guaranteed to be accurate.
 5. Users are advised to use appropriate caution when using this information for navigation.
 6. No warranty is made for the use of this information for navigation.
 7. The information shown on this map is not intended to be used for navigation.
 8. The information shown on this map is based on the best available data and is not guaranteed to be accurate.
 9. Users are advised to use appropriate caution when using this information for navigation.
 10. No warranty is made for the use of this information for navigation.



Legend

Bank in Feet	0 to 100	100 to 200	200 to 300	300 to 400	400 to 500	500 to 600	600 to 700	700 to 800	800 to 900	900 to 1000
Water	Blue	Blue	Blue	Blue	Blue	Blue	Blue	Blue	Blue	Blue
Utility	Black	Black	Black	Black	Black	Black	Black	Black	Black	Black
Obstruction	Green	Green	Green	Green	Green	Green	Green	Green	Green	Green
Channel	Blue	Blue	Blue	Blue	Blue	Blue	Blue	Blue	Blue	Blue
Other	White	White	White	White	White	White	White	White	White	White

U.S. Army Corps of Engineers Charleston District Charleston, South Carolina Savannah Branch 800 MacLeod Ave Charleston, SC 29403 CESAC-GIS@USACE.ARMY.MIL	Designed By: lehydo Software v3.82 Reviewed By: Absolute State Reference State: T. 13,000 Scale: 1 inch = 250 feet Projection: NAD 1983 StatePlane South Carolina FIPS 3900 Feet Intl	Survey Date: 19 DEC 2017 Project Reference Number: 13000 Survey Station: CONDITION	Production Date: 27 DEC 2017
---	---	--	------------------------------

Charleston Entrance Channel Survey
 The information depicted on this map represents the results of surveys made on the dates indicated and is not intended to be used for navigation. The information shown on this map is based on the best available data and is not guaranteed to be accurate. Users are advised to use appropriate caution when using this information for navigation. No warranty is made for the use of this information for navigation.

Charleston, South Carolina
 Concluded on: 19 DEC 2017

51

53

49
R "4"
FIR 4s

54

51

52

G "3"
FIG 4s

Fort Sumter Reach

51

48

R "2"
FIR 2.5s

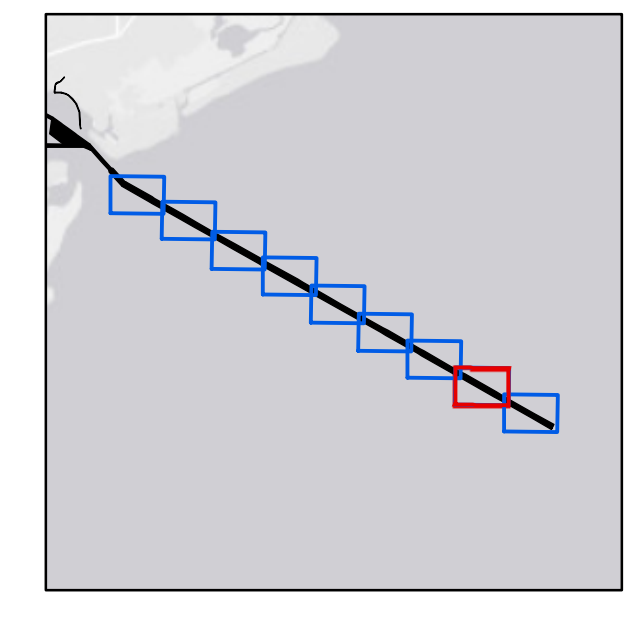
52

51

G "1"
FIG 2.5s

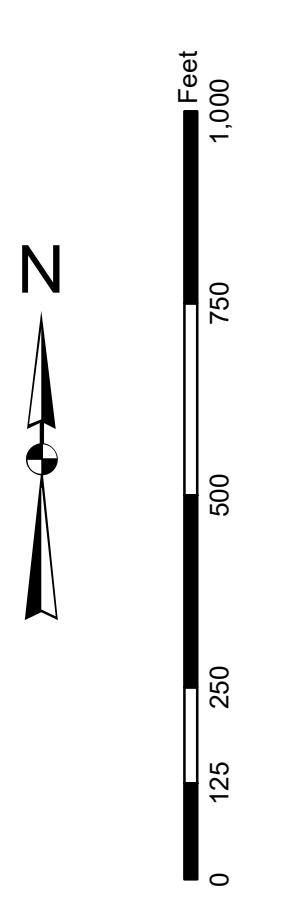
48

49



In its capacity as the U.S. Army Corps of Engineers, Charleston District Office, Special Data Branch has been provided, for review, certain data that are the property of the U.S. Army Corps of Engineers. These data have been developed from the best available information and are not intended to be used for general purposes. No warranty is made by the U.S. Army Corps of Engineers as to the accuracy or reliability of the data or as to the results of their use. The user is advised to verify the data and to use appropriate safety measures.

Production Notes:
1. This is a preliminary drawing.
2. The data shown are based on the best available information.
3. Changes are indicated by red ink.

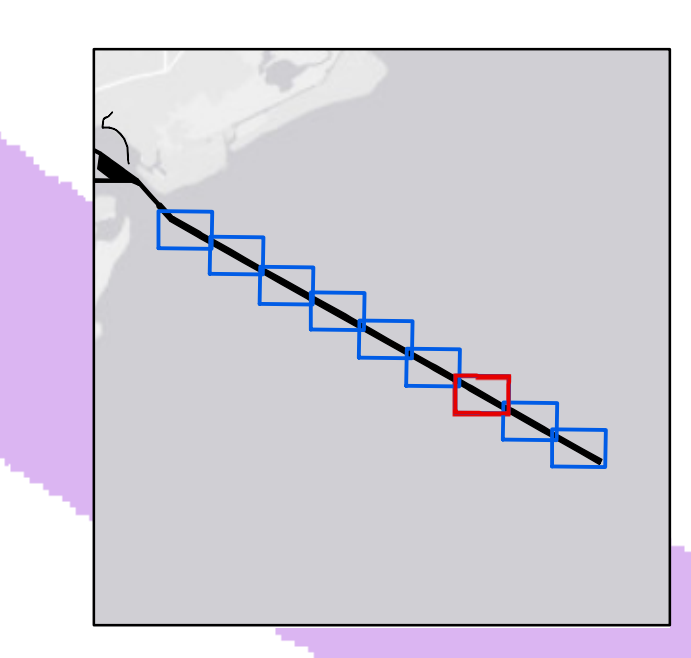
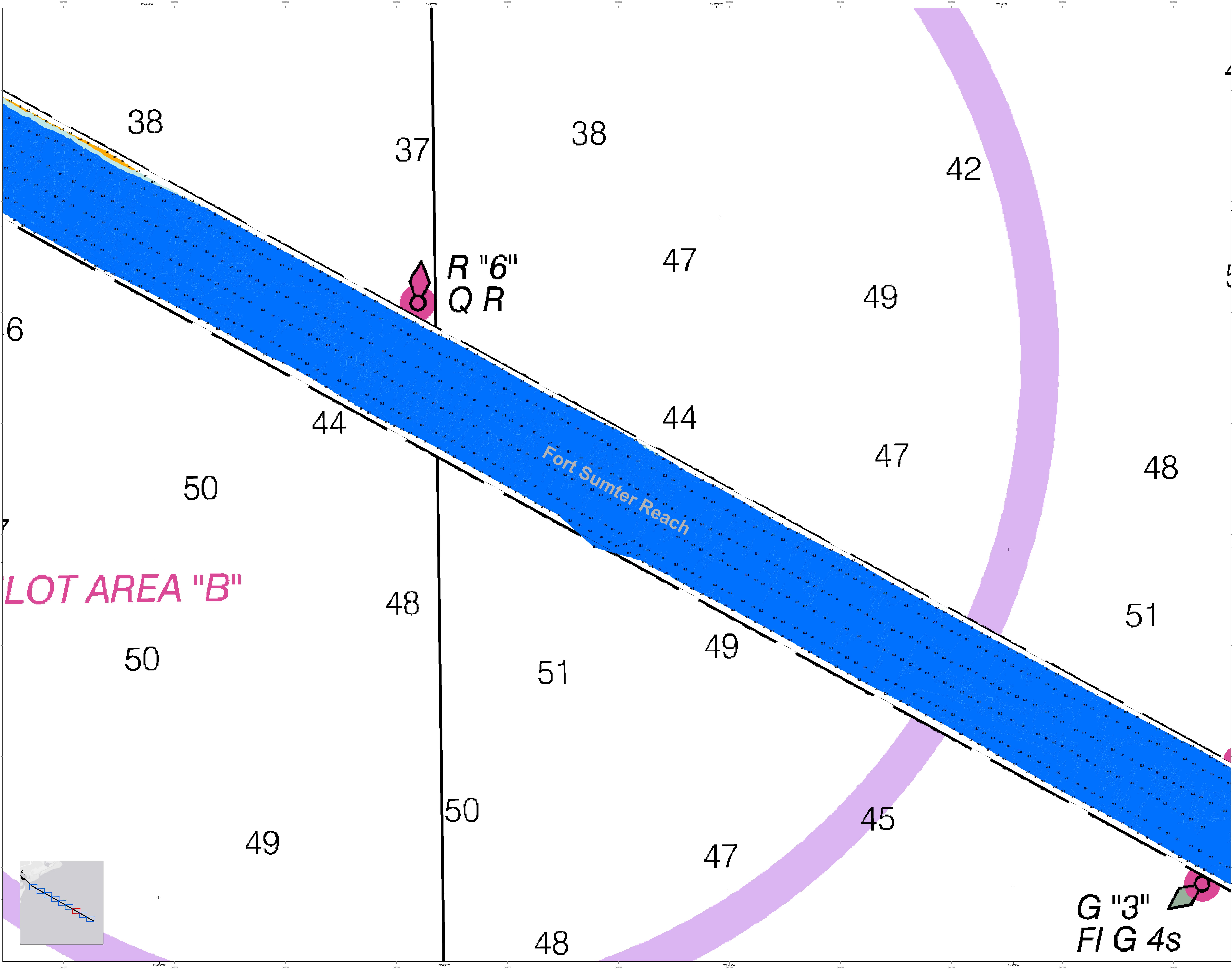


Legend

- Water**
 - Dark Blue
 - Light Blue
 - White
- Channel**
 - Blue
 - Light Blue
 - White
- Channel**
 - Blue
 - Light Blue
 - White
- Channel**
 - Blue
 - Light Blue
 - White
- Channel**
 - Blue
 - Light Blue
 - White

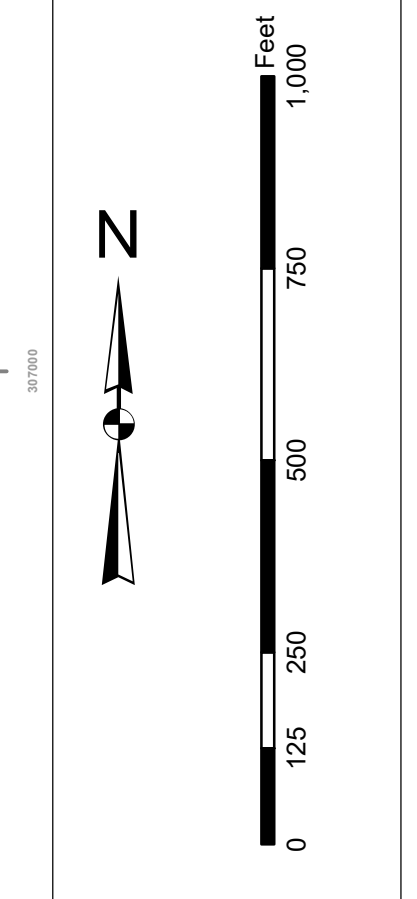
Designed By: Hydro Software v3.82	Survey Date: 19 DEC 2017	Production Date: 27 DEC 2017
Reviewed By: Absolute Scale 1:10,000	Project Reference Number: SAC-2017-00010	
Scale: 1 inch = 250 feet	Survey Station: CONDITION	
Projection: NAD 1983 StatePlane South Carolina FIPS 3800 Feet Intl		

Charleston Entrance Channel Survey
The information depicted on this map represents the results of surveys made on the dates indicated and is not intended to be used for general purposes. No warranty is made by the U.S. Army Corps of Engineers as to the accuracy or reliability of the data or as to the results of their use. The user is advised to verify the data and to use appropriate safety measures.
Concluded on: 19 DEC 2017
Charleston, South Carolina



In its capacity as the U.S. Army Corps of Engineers, Charleston District Office, Special Data Branch has made this report, including the data and information contained herein, available to the public. This information is provided for informational purposes only and is not intended to be used for navigation. The data and information contained herein are not to be used for navigation. The data and information contained herein are not to be used for navigation. The data and information contained herein are not to be used for navigation.

Production Notes:
1. This is a preliminary map.
2. The data and information contained herein are not to be used for navigation.
3. The data and information contained herein are not to be used for navigation.
4. The data and information contained herein are not to be used for navigation.
5. The data and information contained herein are not to be used for navigation.



Legend

Soundings
 - Blue: Soundings
 - Yellow: Soundings
 - Green: Soundings
 - Red: Soundings

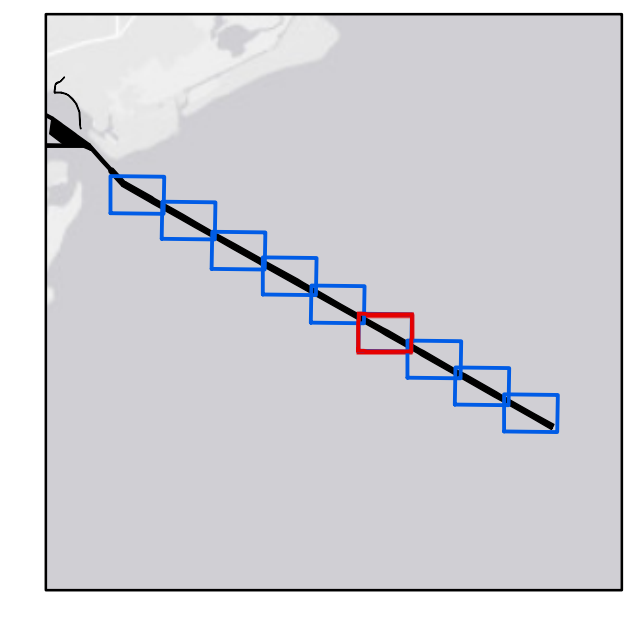
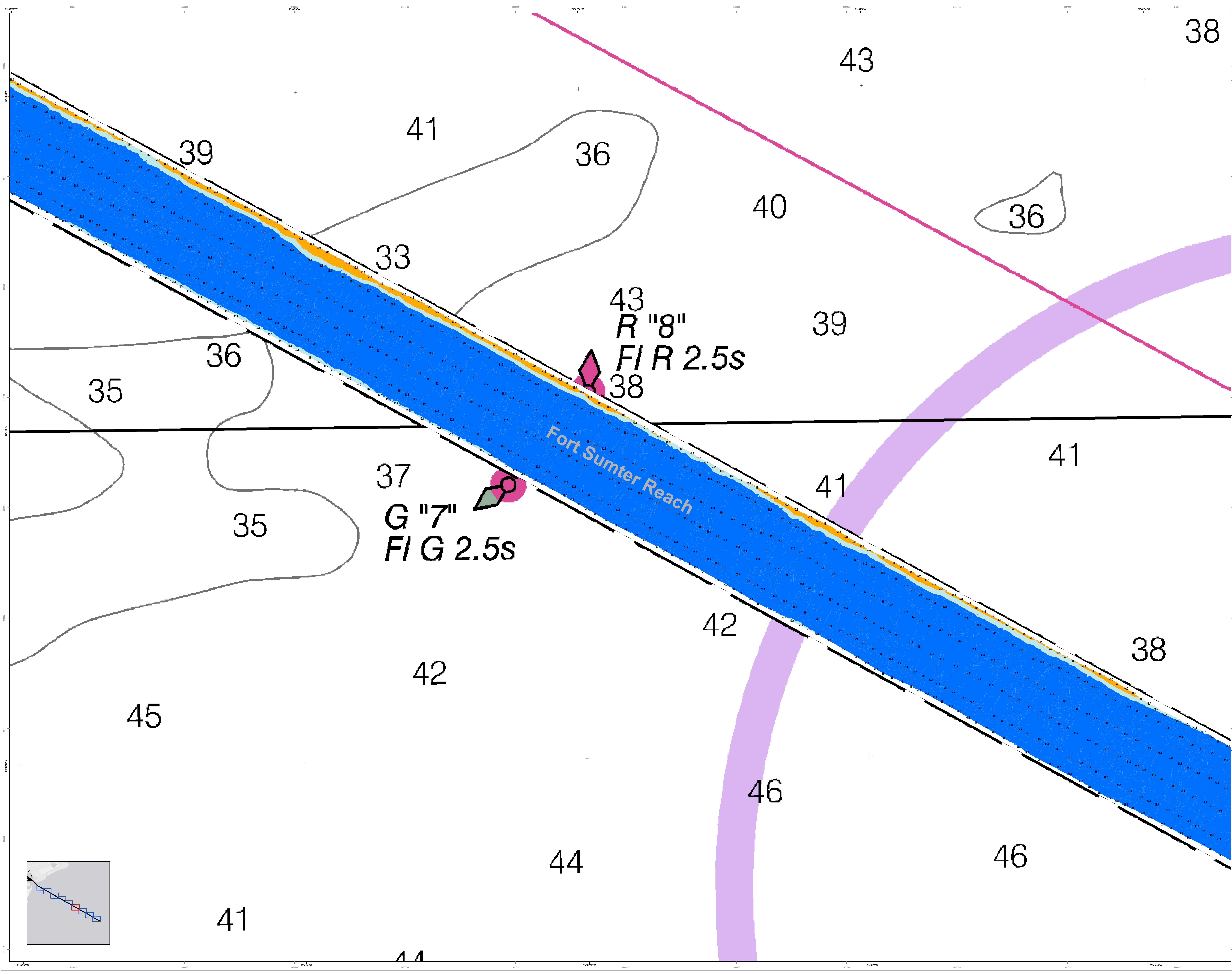
Utility
 - Black: Utility
 - Red: Utility
 - Blue: Utility
 - Green: Utility

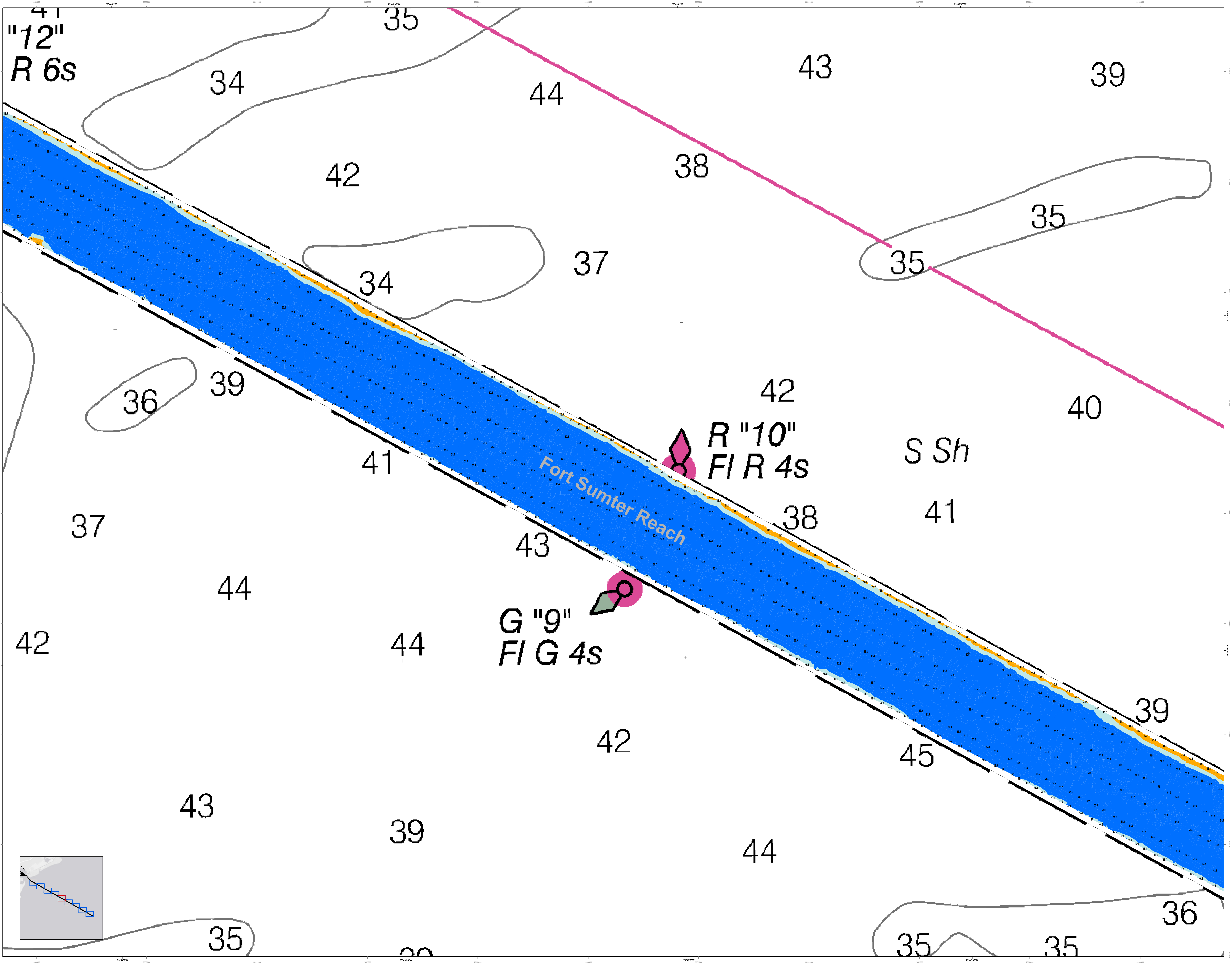
Obstructions
 - Red: Obstructions
 - Blue: Obstructions
 - Green: Obstructions
 - Yellow: Obstructions

Designed By: Hydro Software v3.82	Reviewed By: 1:50,000	Scale: 1 inch = 250 feet	Projection: NAD 1983 StatePlane South Carolina FIPS 3800 Feet Intl
Survey Date: 19 DEC 2017	Project Reference Number: PC00010	Survey Station: CONDITION	Production Date: 27 DEC 2017
U.S. Army Corps of Engineers Charleston District Office Savannah Branch 800 MacLeod Ave Charleston, SC 29403	CESAC-GIS@USACE.ARMY.MIL		

Charleston Entrance Channel Survey
 The information depicted on this map represents the results of surveys made on the dates indicated and is not to be used for navigation. The data and information contained herein are not to be used for navigation. The data and information contained herein are not to be used for navigation. The data and information contained herein are not to be used for navigation.

Concluded on: 19 DEC 2017
 Charleston, South Carolina





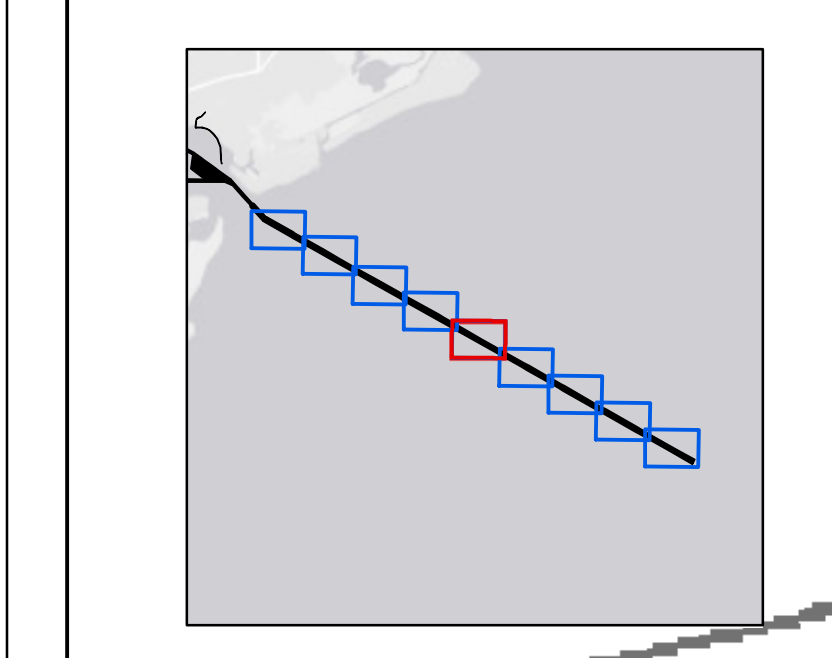
41
"12"
R 6s

R "10"
FIR 4s

G "9"
FIG 4s

S Sh

Fort Sumter Reach



U.S. Army Corps of Engineers
Charleston District

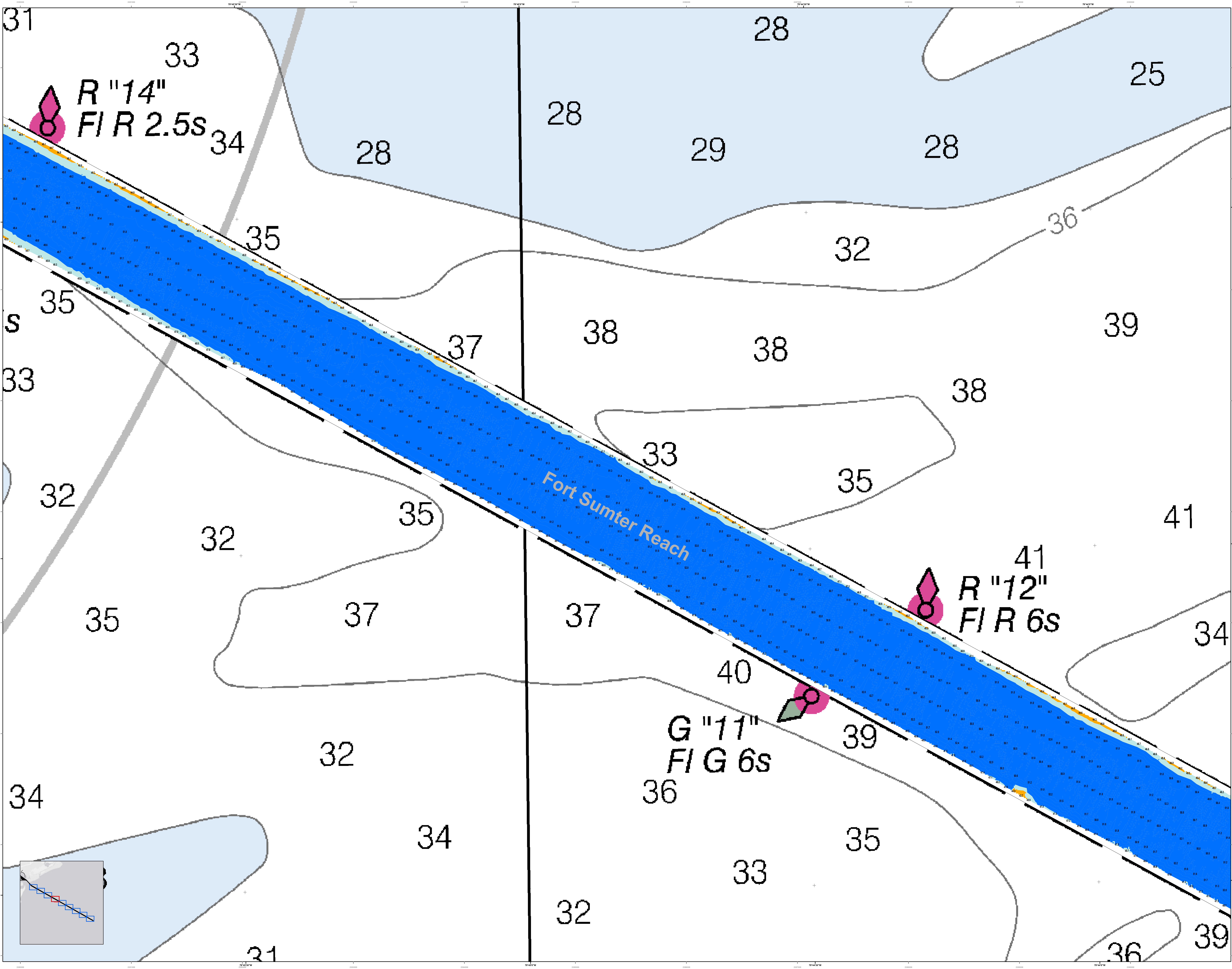
Production Notes:
1. This map is the property of the U.S. Army Corps of Engineers. It is loaned to you for your use only. It is not to be reprinted or reproduced in any form without the express written permission of the U.S. Army Corps of Engineers.
2. This map was produced using the following data:
- 1:50,000 Scale
- 1:250 Scale
- 1:50,000 Scale
- 1:50,000 Scale
- 1:250 Scale
- 1:50,000 Scale
- 1:250 Scale
3. All data were obtained from the following sources:
- 1:50,000 Scale
- 1:250 Scale
- 1:50,000 Scale
- 1:250 Scale
4. All data were obtained from the following sources:
- 1:50,000 Scale
- 1:250 Scale
- 1:50,000 Scale
- 1:250 Scale
5. All data were obtained from the following sources:
- 1:50,000 Scale
- 1:250 Scale
- 1:50,000 Scale
- 1:250 Scale
6. All data were obtained from the following sources:
- 1:50,000 Scale
- 1:250 Scale
- 1:50,000 Scale
- 1:250 Scale
7. All data were obtained from the following sources:
- 1:50,000 Scale
- 1:250 Scale
- 1:50,000 Scale
- 1:250 Scale
8. All data were obtained from the following sources:
- 1:50,000 Scale
- 1:250 Scale
- 1:50,000 Scale
- 1:250 Scale
9. All data were obtained from the following sources:
- 1:50,000 Scale
- 1:250 Scale
- 1:50,000 Scale
- 1:250 Scale
10. All data were obtained from the following sources:
- 1:50,000 Scale
- 1:250 Scale
- 1:50,000 Scale
- 1:250 Scale

Legend

Symbol	Description
	Water
	Depth Contour (10 feet)
	Depth Contour (20 feet)
	Shoreline
	Marker
	Marker
	Survey Line
	Property Line
	Utility
	Obstacle
	Obstacle
	Obstacle

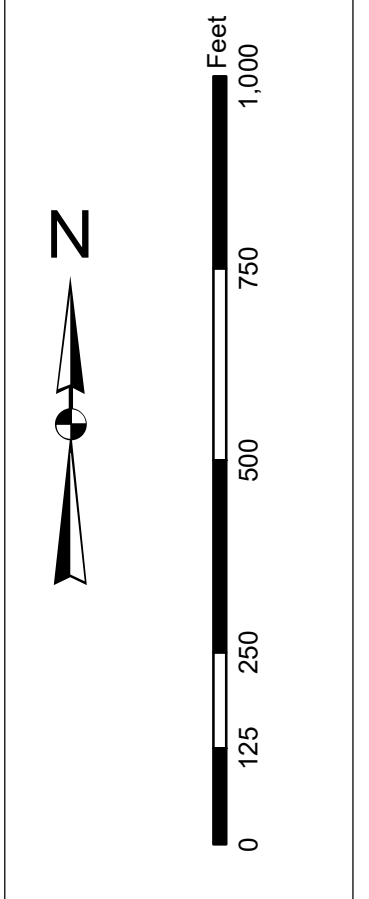
Designed By: IHYDRO Software v3.82	Survey Date: 19 DEC 2017	Production Date: 27 DEC 2017
Reviewed By: 1:50,000 Scale	Project Reference Number: PC-20010	
Revised By: 1:250 Scale	Survey Station: CONDITION	
Projection: NAD 1983 StatePlane South Carolina FIPS 3800 Feet Intl		

U.S. Army Corps of Engineers
Charleston District
Charleston, South Carolina
Survey Station:
CONDITION



In its capacity as the U.S. Army Corps of Engineers, Charleston District Office, Special Data Branch has made this chart, including the information contained therein, available to the public. This information is provided for informational purposes only and is not intended to be used for navigation. The user assumes all responsibility for the use of this information. The user acknowledges that the information is provided as is and that the user assumes all responsibility for the use of this information. The user acknowledges that the information is provided as is and that the user assumes all responsibility for the use of this information.

Production Notes:
1. This chart is a hydrographic chart.
2. The chart is based on the following data:
a. Soundings from 1910 to 1920
b. Soundings from 1920 to 1930
c. Soundings from 1930 to 1940
d. Soundings from 1940 to 1950
e. Soundings from 1950 to 1960
f. Soundings from 1960 to 1970
g. Soundings from 1970 to 1980
h. Soundings from 1980 to 1990
i. Soundings from 1990 to 2000
j. Soundings from 2000 to 2010
k. Soundings from 2010 to 2017



Legend

Soundings: 1910-1920, 1920-1930, 1930-1940, 1940-1950, 1950-1960, 1960-1970, 1970-1980, 1980-1990, 1990-2000, 2000-2010, 2010-2017

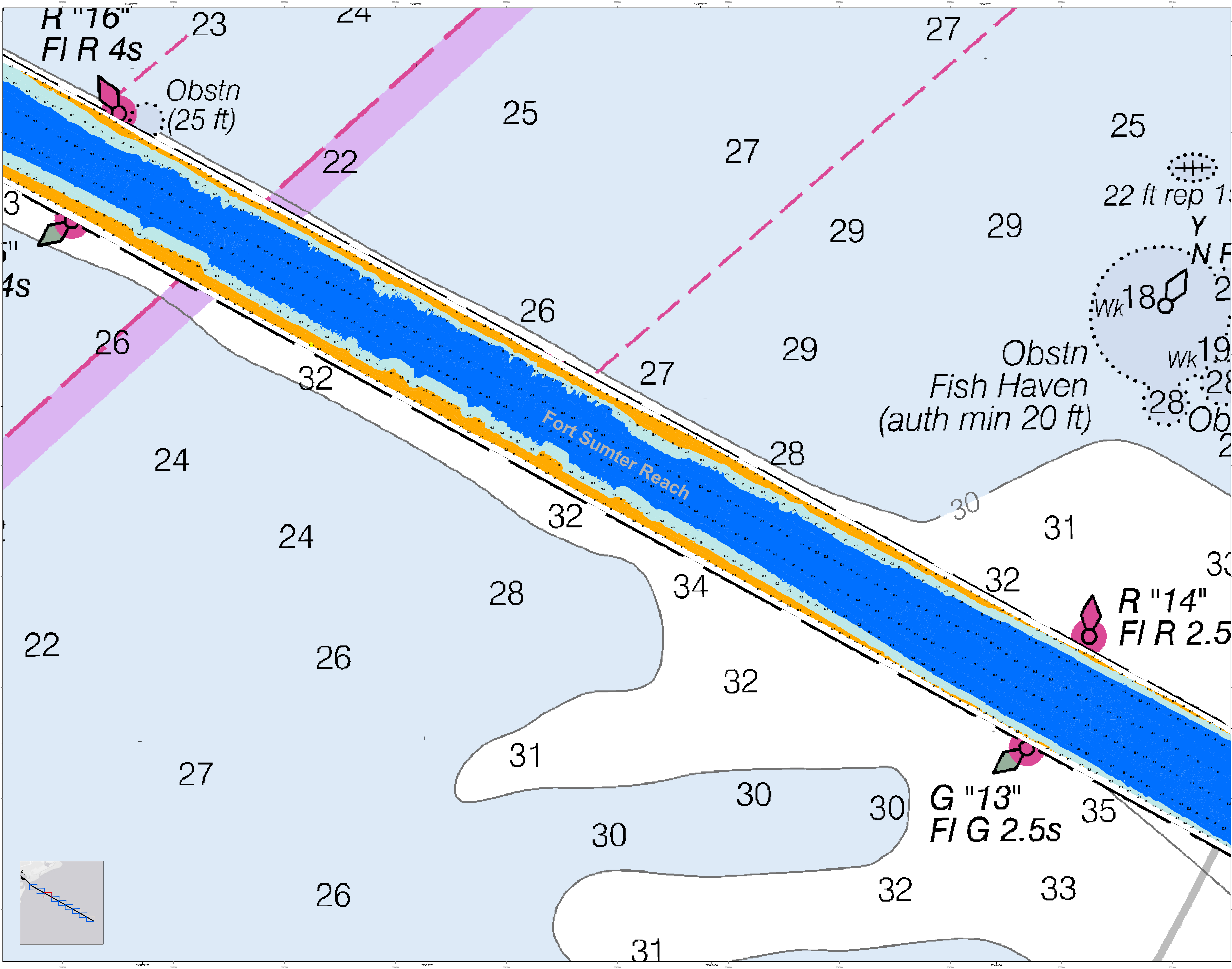
Chart Symbols: Obsolete Light, Obsolete Buoy, Obsolete Daymark, Obsolete Nightmark, Obsolete Daymark, Obsolete Nightmark, Obsolete Daymark, Obsolete Nightmark

Other Symbols: Coast Guard Buoy, Coast Guard Light, Coast Guard Buoy, Coast Guard Light

Designed By:	Hydro Software v3.82	Survey Date:	19 DEC 2017	Production Date:	27 DEC 2017
Reviewed By:	1:50,000	Project Reference Number:	PC00010	Project Reference Number:	PC00010
Revised By:	1 inch = 250 feet	Scale:	CONDITION	Scale:	CONDITION
U.S. Army Corps of Engineers Charleston District Office Special Data Branch 804 MacLeod Ave Charleston, SC 29403		Projection:	NAD 1983 StatePlane South Carolina FIPS 3900 Feet Intl		

Charleston Entrance Channel Survey
The information depicted on this map represents the results of surveys made on the dates indicated and is not intended to be used for navigation. The user assumes all responsibility for the use of this information. The user acknowledges that the information is provided as is and that the user assumes all responsibility for the use of this information.

Concluded on: 19 DEC 2017
Charleston, South Carolina



U.S. Army Corps of Engineers
Charleston District

Production Notes:
 1. This chart is produced in accordance with the Hydrographic Surveying Manual, 16 CFR 121.101-121.105.
 2. Soundings are in feet unless otherwise indicated.
 3. Obstructions are shown in accordance with the Hydrographic Surveying Manual, 16 CFR 121.101-121.105.
 4. The chart is based on the latest available data.
 5. The chart is subject to change without notice.
 6. The chart is not to be used for navigation.
 7. Mariners are encouraged to use all prudent safety practices.

Legend:
 Depth Soundings: 22 ft, 24 ft, 26 ft, 28 ft, 30 ft, 32 ft, 34 ft, 35 ft
 Obstruction: Ob
 Navigational Aids: R 16, R 14, G 13
 Soundings: 22 ft rep 1, Y, N, Wk 18, Wk 19, Ob 28

Scale:
 0 125 250 500 750 1000 Feet

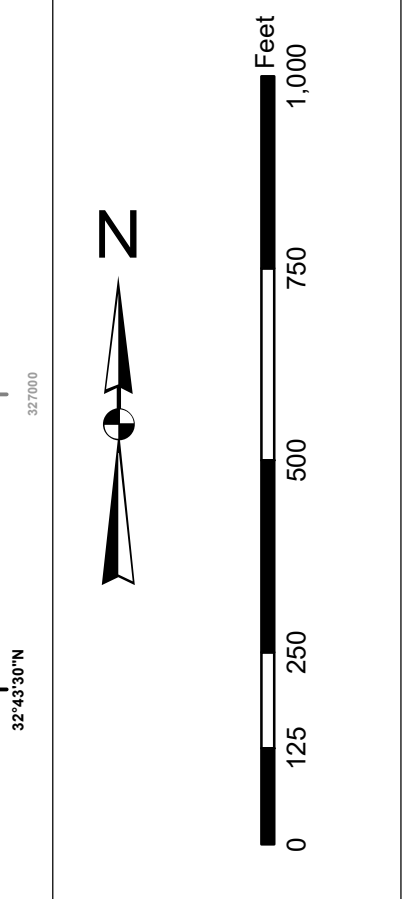
Designed By:	U.S. Army Corps of Engineers	Survey Date:	19 DEC 2017	Production Date:	27 DEC 2017
Reviewed By:	Charleston District	Project Reference Number:	PC00010	Project Reference Number:	PC00010
Scale:	1:50,000	Scale:	1:50,000	Scale:	1:50,000
Projection:	NAD 1983 StatePlane South Carolina FIPS 3800 Feet Int	Projection:	NAD 1983 StatePlane South Carolina FIPS 3800 Feet Int	Projection:	NAD 1983 StatePlane South Carolina FIPS 3800 Feet Int

Charleston Entrance Channel Survey
 The information depicted on this map represents the results of surveys made on the dates indicated and is not to be used for navigation under general conditions existing at that time.
 Concluded on: 19 DEC 2017
 Charleston, South Carolina

SHEET REFERENCE NUMBER
 C002
 SHEET 7 OF 9

In its official capacity, the U.S. Army Corps of Engineers, Charleston District Office, Special Data Branch has made this project, contract, and/or agreement available to the public. This information is provided for informational purposes only and does not constitute an offer of any product or service. The information is provided as is, without warranty, and the user assumes all liability for its use. The information is not to be used for navigation, and the user is encouraged to use all prudent safety measures.

Production Notes:
1. This map is a photographic reproduction of the original map.
2. All data were collected by the U.S. Army Corps of Engineers, Charleston District Office, Special Data Branch.
3. All data were collected on or before the date of publication.
4. All data were collected in accordance with the U.S. Army Corps of Engineers, Charleston District Office, Special Data Branch, Standard Operating Procedure (SOP) for Hydrographic Surveys.
5. All data were collected in accordance with the U.S. Army Corps of Engineers, Charleston District Office, Special Data Branch, Standard Operating Procedure (SOP) for Hydrographic Surveys.
6. All data were collected in accordance with the U.S. Army Corps of Engineers, Charleston District Office, Special Data Branch, Standard Operating Procedure (SOP) for Hydrographic Surveys.

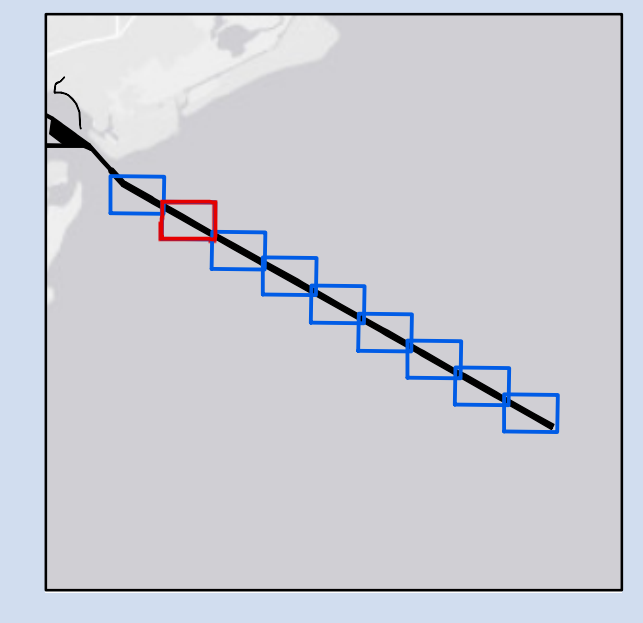
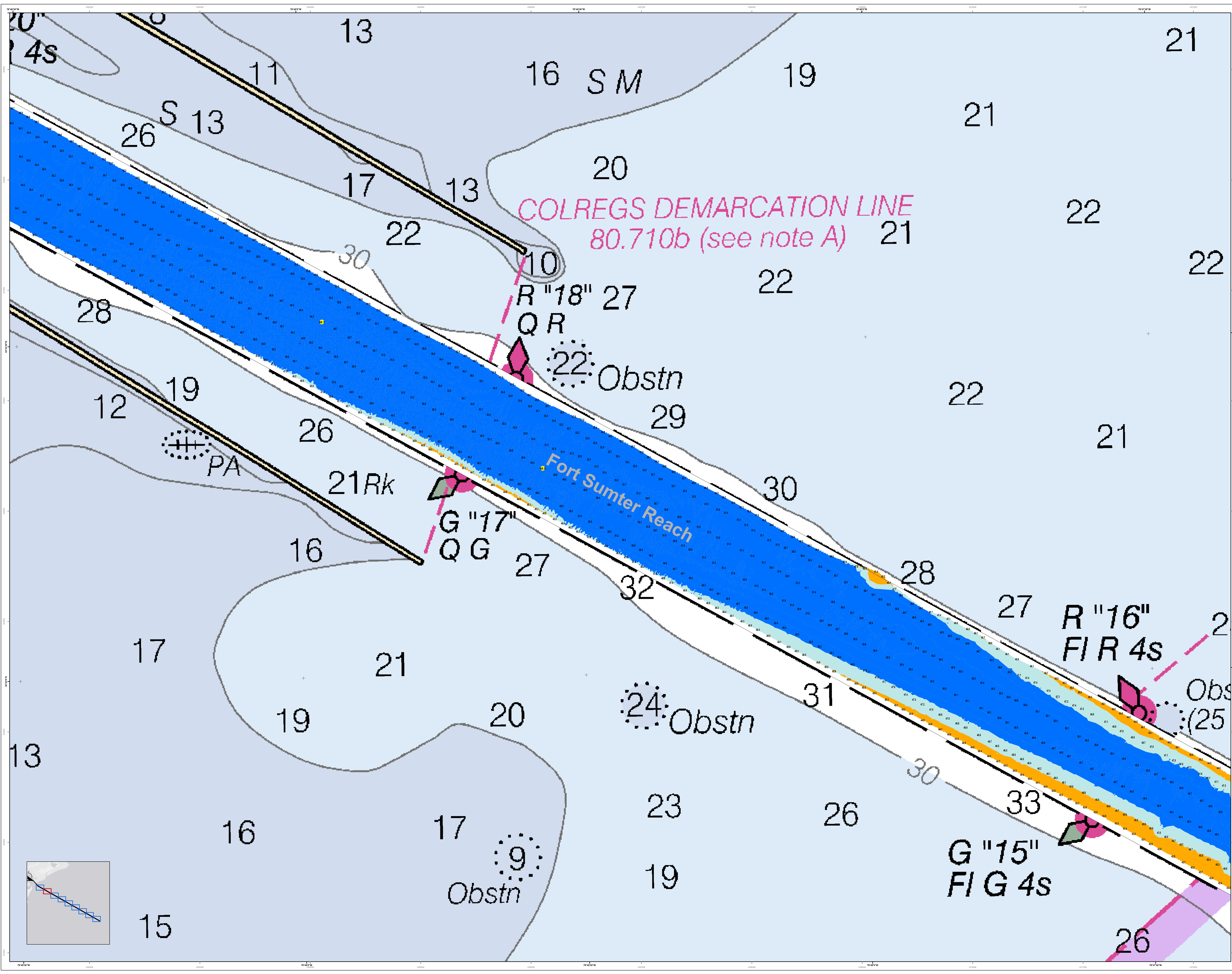


Legend

Soundings
 1. 10-19.9
 2. 20-29.9
 3. 30-39.9
 4. 40-49.9
 5. 50-59.9
 6. 60-69.9
 7. 70-79.9
 8. 80-89.9
 9. 90-99.9
 10. 100-109.9
 11. 110-119.9
 12. 120-129.9
 13. 130-139.9
 14. 140-149.9
 15. 150-159.9
 16. 160-169.9
 17. 170-179.9
 18. 180-189.9
 19. 190-199.9
 20. 200-209.9
 21. 210-219.9
 22. 220-229.9
 23. 230-239.9
 24. 240-249.9
 25. 250-259.9
 26. 260-269.9
 27. 270-279.9
 28. 280-289.9
 29. 290-299.9
 30. 300-309.9
 31. 310-319.9
 32. 320-329.9
 33. 330-339.9
 34. 340-349.9
 35. 350-359.9
 36. 360-369.9
 37. 370-379.9
 38. 380-389.9
 39. 390-399.9
 40. 400-409.9
 41. 410-419.9
 42. 420-429.9
 43. 430-439.9
 44. 440-449.9
 45. 450-459.9
 46. 460-469.9
 47. 470-479.9
 48. 480-489.9
 49. 490-499.9
 50. 500-509.9
 51. 510-519.9
 52. 520-529.9
 53. 530-539.9
 54. 540-549.9
 55. 550-559.9
 56. 560-569.9
 57. 570-579.9
 58. 580-589.9
 59. 590-599.9
 60. 600-609.9
 61. 610-619.9
 62. 620-629.9
 63. 630-639.9
 64. 640-649.9
 65. 650-659.9
 66. 660-669.9
 67. 670-679.9
 68. 680-689.9
 69. 690-699.9
 70. 700-709.9
 71. 710-719.9
 72. 720-729.9
 73. 730-739.9
 74. 740-749.9
 75. 750-759.9
 76. 760-769.9
 77. 770-779.9
 78. 780-789.9
 79. 790-799.9
 80. 800-809.9
 81. 810-819.9
 82. 820-829.9
 83. 830-839.9
 84. 840-849.9
 85. 850-859.9
 86. 860-869.9
 87. 870-879.9
 88. 880-889.9
 89. 890-899.9
 90. 900-909.9
 91. 910-919.9
 92. 920-929.9
 93. 930-939.9
 94. 940-949.9
 95. 950-959.9
 96. 960-969.9
 97. 970-979.9
 98. 980-989.9
 99. 990-999.9
 100. 1000-1009.9

Designed By:	Survey Date:	Production Date:
Reviewed By:	19 DEC 2017	27 DEC 2017
Revised By:	Project Reference Number:	
1:10,000	SC-2017-00010	
1 inch = 250 feet	Survey Scale:	CONDITION
Projection:	NAD 1983 StatePlane South Carolina FIPS 3800 Feet Int	

Charleston Entrance Channel Survey
 The information depicted on this map represents the results of surveys made on the dates indicated and call on the surveys on which they are based. The general conditions existing at that time are shown. This map was compiled on: 19 DEC 2017
 Charleston, South Carolina



Production Notes:
1. This map is a preliminary design and is subject to change without notice.
2. This map is for informational purposes only and is not to be used for navigation.
3. The information on this map is based on the most recent available data.
4. The information on this map is based on the most recent available data.
5. The information on this map is based on the most recent available data.
6. The information on this map is based on the most recent available data.
7. The information on this map is based on the most recent available data.
8. The information on this map is based on the most recent available data.
9. The information on this map is based on the most recent available data.
10. The information on this map is based on the most recent available data.
11. The information on this map is based on the most recent available data.
12. The information on this map is based on the most recent available data.
13. The information on this map is based on the most recent available data.
14. The information on this map is based on the most recent available data.
15. The information on this map is based on the most recent available data.
16. The information on this map is based on the most recent available data.
17. The information on this map is based on the most recent available data.
18. The information on this map is based on the most recent available data.
19. The information on this map is based on the most recent available data.
20. The information on this map is based on the most recent available data.
21. The information on this map is based on the most recent available data.
22. The information on this map is based on the most recent available data.
23. The information on this map is based on the most recent available data.
24. The information on this map is based on the most recent available data.
25. The information on this map is based on the most recent available data.
26. The information on this map is based on the most recent available data.
27. The information on this map is based on the most recent available data.
28. The information on this map is based on the most recent available data.
29. The information on this map is based on the most recent available data.
30. The information on this map is based on the most recent available data.
31. The information on this map is based on the most recent available data.
32. The information on this map is based on the most recent available data.
33. The information on this map is based on the most recent available data.
34. The information on this map is based on the most recent available data.
35. The information on this map is based on the most recent available data.
36. The information on this map is based on the most recent available data.
37. The information on this map is based on the most recent available data.
38. The information on this map is based on the most recent available data.
39. The information on this map is based on the most recent available data.
40. The information on this map is based on the most recent available data.

Legend:

- Depth:**
1: 1 to 2.5 fms
2: 2.5 to 5 fms
3: 5 to 10 fms
4: 10 to 15 fms
5: 15 to 20 fms
6: 20 to 25 fms
7: 25 to 30 fms
8: 30 to 35 fms
9: 35 to 40 fms
10: 40 to 45 fms
11: 45 to 50 fms
12: 50 to 55 fms
13: 55 to 60 fms
14: 60 to 65 fms
15: 65 to 70 fms
16: 70 to 75 fms
17: 75 to 80 fms
18: 80 to 85 fms
19: 85 to 90 fms
20: 90 to 95 fms
21: 95 to 100 fms
22: 100 to 105 fms
23: 105 to 110 fms
24: 110 to 115 fms
25: 115 to 120 fms
26: 120 to 125 fms
27: 125 to 130 fms
28: 130 to 135 fms
29: 135 to 140 fms
30: 140 to 145 fms
31: 145 to 150 fms
32: 150 to 155 fms
33: 155 to 160 fms
34: 160 to 165 fms
35: 165 to 170 fms
36: 170 to 175 fms
37: 175 to 180 fms
38: 180 to 185 fms
39: 185 to 190 fms
40: 190 to 195 fms
41: 195 to 200 fms
42: 200 to 205 fms
43: 205 to 210 fms
44: 210 to 215 fms
45: 215 to 220 fms
46: 220 to 225 fms
47: 225 to 230 fms
48: 230 to 235 fms
49: 235 to 240 fms
50: 240 to 245 fms
51: 245 to 250 fms
52: 250 to 255 fms
53: 255 to 260 fms
54: 260 to 265 fms
55: 265 to 270 fms
56: 270 to 275 fms
57: 275 to 280 fms
58: 280 to 285 fms
59: 285 to 290 fms
60: 290 to 295 fms
61: 295 to 300 fms
62: 300 to 305 fms
63: 305 to 310 fms
64: 310 to 315 fms
65: 315 to 320 fms
66: 320 to 325 fms
67: 325 to 330 fms
68: 330 to 335 fms
69: 335 to 340 fms
70: 340 to 345 fms
71: 345 to 350 fms
72: 350 to 355 fms
73: 355 to 360 fms
74: 360 to 365 fms
75: 365 to 370 fms
76: 370 to 375 fms
77: 375 to 380 fms
78: 380 to 385 fms
79: 385 to 390 fms
80: 390 to 395 fms
81: 395 to 400 fms
82: 400 to 405 fms
83: 405 to 410 fms
84: 410 to 415 fms
85: 415 to 420 fms
86: 420 to 425 fms
87: 425 to 430 fms
88: 430 to 435 fms
89: 435 to 440 fms
90: 440 to 445 fms
91: 445 to 450 fms
92: 450 to 455 fms
93: 455 to 460 fms
94: 460 to 465 fms
95: 465 to 470 fms
96: 470 to 475 fms
97: 475 to 480 fms
98: 480 to 485 fms
99: 485 to 490 fms
100: 490 to 495 fms
101: 495 to 500 fms
102: 500 to 505 fms
103: 505 to 510 fms
104: 510 to 515 fms
105: 515 to 520 fms
106: 520 to 525 fms
107: 525 to 530 fms
108: 530 to 535 fms
109: 535 to 540 fms
110: 540 to 545 fms
111: 545 to 550 fms
112: 550 to 555 fms
113: 555 to 560 fms
114: 560 to 565 fms
115: 565 to 570 fms
116: 570 to 575 fms
117: 575 to 580 fms
118: 580 to 585 fms
119: 585 to 590 fms
120: 590 to 595 fms
121: 595 to 600 fms
122: 600 to 605 fms
123: 605 to 610 fms
124: 610 to 615 fms
125: 615 to 620 fms
126: 620 to 625 fms
127: 625 to 630 fms
128: 630 to 635 fms
129: 635 to 640 fms
130: 640 to 645 fms
131: 645 to 650 fms
132: 650 to 655 fms
133: 655 to 660 fms
134: 660 to 665 fms
135: 665 to 670 fms
136: 670 to 675 fms
137: 675 to 680 fms
138: 680 to 685 fms
139: 685 to 690 fms
140: 690 to 695 fms
141: 695 to 700 fms
142: 700 to 705 fms
143: 705 to 710 fms
144: 710 to 715 fms
145: 715 to 720 fms
146: 720 to 725 fms
147: 725 to 730 fms
148: 730 to 735 fms
149: 735 to 740 fms
150: 740 to 745 fms
151: 745 to 750 fms
152: 750 to 755 fms
153: 755 to 760 fms
154: 760 to 765 fms
155: 765 to 770 fms
156: 770 to 775 fms
157: 775 to 780 fms
158: 780 to 785 fms
159: 785 to 790 fms
160: 790 to 795 fms
161: 795 to 800 fms
162: 800 to 805 fms
163: 805 to 810 fms
164: 810 to 815 fms
165: 815 to 820 fms
166: 820 to 825 fms
167: 825 to 830 fms
168: 830 to 835 fms
169: 835 to 840 fms
170: 840 to 845 fms
171: 845 to 850 fms
172: 850 to 855 fms
173: 855 to 860 fms
174: 860 to 865 fms
175: 865 to 870 fms
176: 870 to 875 fms
177: 875 to 880 fms
178: 880 to 885 fms
179: 885 to 890 fms
180: 890 to 895 fms
181: 895 to 900 fms
182: 900 to 905 fms
183: 905 to 910 fms
184: 910 to 915 fms
185: 915 to 920 fms
186: 920 to 925 fms
187: 925 to 930 fms
188: 930 to 935 fms
189: 935 to 940 fms
190: 940 to 945 fms
191: 945 to 950 fms
192: 950 to 955 fms
193: 955 to 960 fms
194: 960 to 965 fms
195: 965 to 970 fms
196: 970 to 975 fms
197: 975 to 980 fms
198: 980 to 985 fms
199: 985 to 990 fms
200: 990 to 995 fms
201: 995 to 1000 fms

Designed By: U.S. Army Corps of Engineers Charleston District Charleston, South Carolina Savannah Branch Bainbridge Ave Charleston, SC 29403 CESAC-GIS@USACE.ARMY.MIL	Software: HecHydro v3.02	Survey Date: 19 DEC 2017	Production Date: 27 DEC 2017
Reviewed By: [Name]	Scale: 1" = 250 feet	Project Reference Number: [Number]	Project Reference Number: [Number]
Scale: 1" = 250 feet	Scale: 1" = 250 feet	Scale: 1" = 250 feet	Scale: 1" = 250 feet
Scale: 1" = 250 feet	Scale: 1" = 250 feet	Scale: 1" = 250 feet	Scale: 1" = 250 feet

Charleston Entrance Channel Survey
The information depicted on this map represents the results of surveys made on the dates indicated and is not to be used for navigation. The information on this map is based on the most recent available data.
Concluded on: 19 DEC 2017
Charleston, South Carolina

