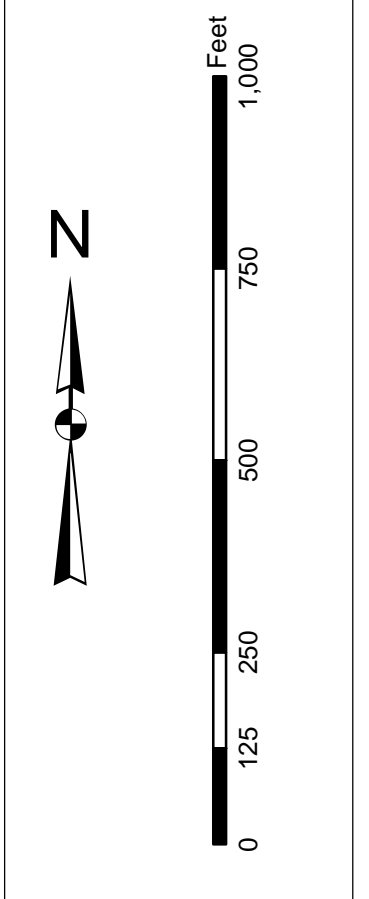


**Production Notes:**  
 1. This chart is a hydrographic chart and is not a nautical chart.  
 2. This chart is not to be used for navigation.  
 3. This chart is not to be used for any other purpose.  
 4. This chart is not to be used for any other purpose.  
 5. This chart is not to be used for any other purpose.  
 6. This chart is not to be used for any other purpose.  
 7. This chart is not to be used for any other purpose.  
 8. This chart is not to be used for any other purpose.  
 9. This chart is not to be used for any other purpose.  
 10. This chart is not to be used for any other purpose.

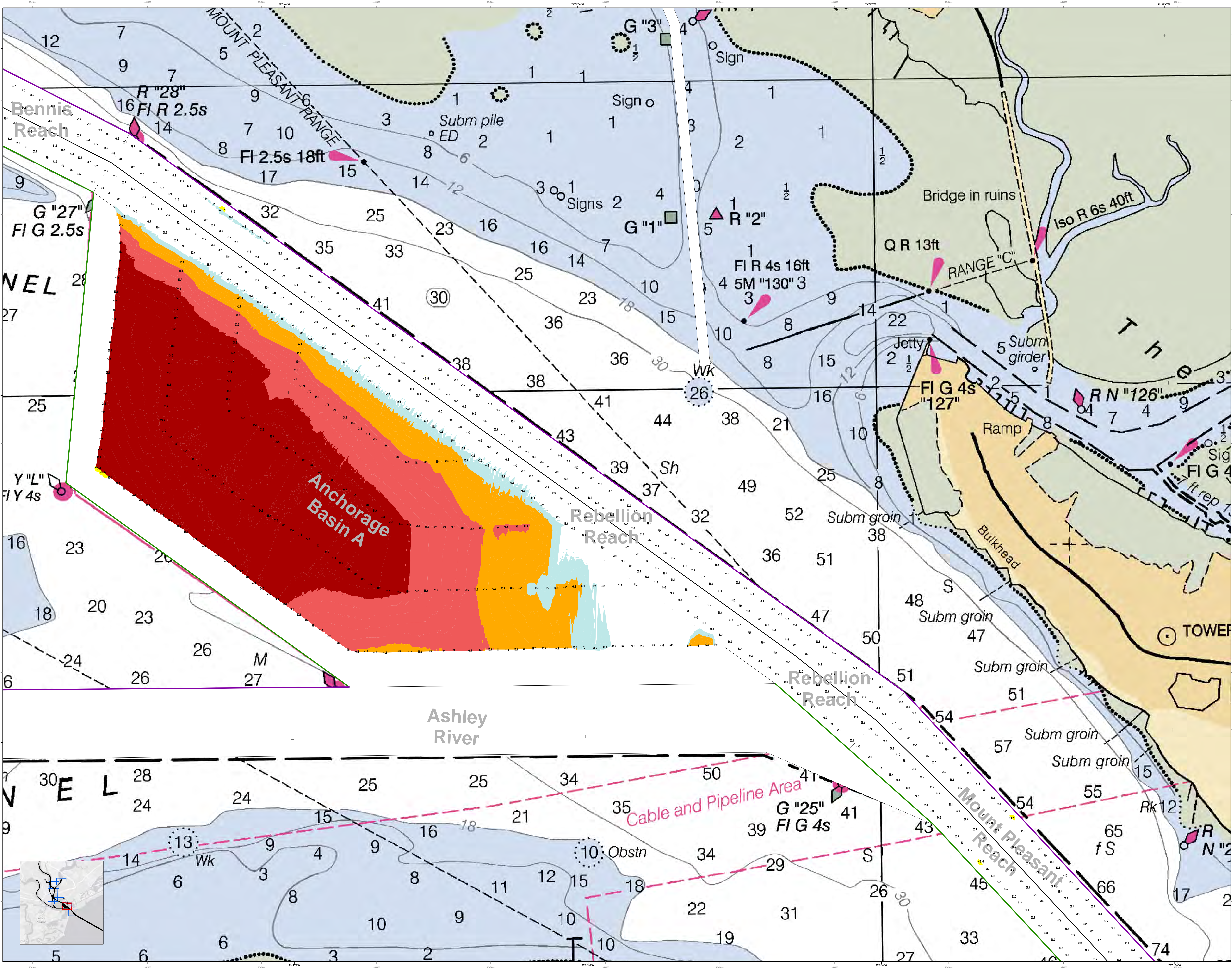


**Legend**

Symbol	Description
[Color swatches]	Depth Soundings
[Line styles]	Obstructions
[Line styles]	Repairs
[Line styles]	Navigation Aids
[Line styles]	Shoals
[Line styles]	Bottom
[Line styles]	Channel
[Line styles]	Other

Designed By:	U.S. Army Corps of Engineers
Reviewed By:	U.S. Army Corps of Engineers
Checked By:	U.S. Army Corps of Engineers
Approved By:	U.S. Army Corps of Engineers
Scale:	1 inch = 242 feet
Projection:	NAD 1983 StatePlane South Carolina FIPS 3900 Feet
Survey Date:	20 OCT 2015
Production Date:	20 NOV 2015
Project Reference Number:	15-300
Sheet Reference Number:	C002
Sheet Title:	Charleston Harbor Channel

**Charleston Harbor Channel**  
 The information depicted on this map represents the results of surveys made on the dates indicated and call on other sources of information for general conditions existing at that time.  
 Concluded on: 20-OCT-2015  
 Charleston, South Carolina



**U.S. Army Corps of Engineers**  
Charleston District

**Production Notes:**  
This chart is produced by the U.S. Army Corps of Engineers, Charleston District Office. It is based on the latest available data and is subject to change without notice. The chart is not to be used for navigation purposes unless it is used in conjunction with the latest available data.

**Legend:**

- Depth Soundings: 1-9, 10-19, 20-29, 30-39, 40-49, 50-59, 60-69, 70-79, 80-89, 90-99
- Navigation Aids: Buoy, Light, Range, etc.
- Obstructions: Obstruction, Submerged Pile, etc.
- Infrastructure: Bridge in ruins, Jetty, Ramp, Bulkhead, etc.

**Scale:** 1 inch = 242 feet

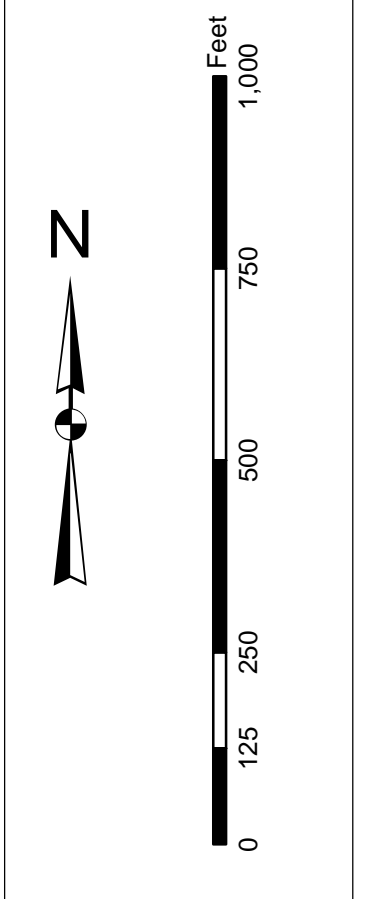
**Chart Information:**

Designed By:	U.S. Army Corps of Engineers	Production Date:	20 OCT 2015
Reviewed By:	Charleston District Office	Project Reference Number:	12345
Scale:	1:24242	Survey System:	[CONDITION]
Projection:	NAD 1983 StatePlane South Carolina FIPS 3900 Feet		

**Charleston Lower Harbor Channel**  
The information depicted on this map represents the results of surveys made on the dates indicated and call on other sources for the most current and general conditions existing at that time.  
Concluded on: 20-OCT-2015  
Charleston, South Carolina

**SHEET REFERENCE NUMBER**  
C002  
SHEET 2 OF 7

In this chart the U.S. Army Corps of Engineers, Charleston District Office, Special Data Branch has taken the latest available data from the U.S. Army Corps of Engineers, Charleston District Office, Special Data Branch and has added to it the information from the U.S. Army Corps of Engineers, Charleston District Office, Special Data Branch. This information is for informational purposes only and does not constitute a change in the official data of the U.S. Army Corps of Engineers, Charleston District Office. The information is for informational purposes only and does not constitute a change in the official data of the U.S. Army Corps of Engineers, Charleston District Office. The information is for informational purposes only and does not constitute a change in the official data of the U.S. Army Corps of Engineers, Charleston District Office.

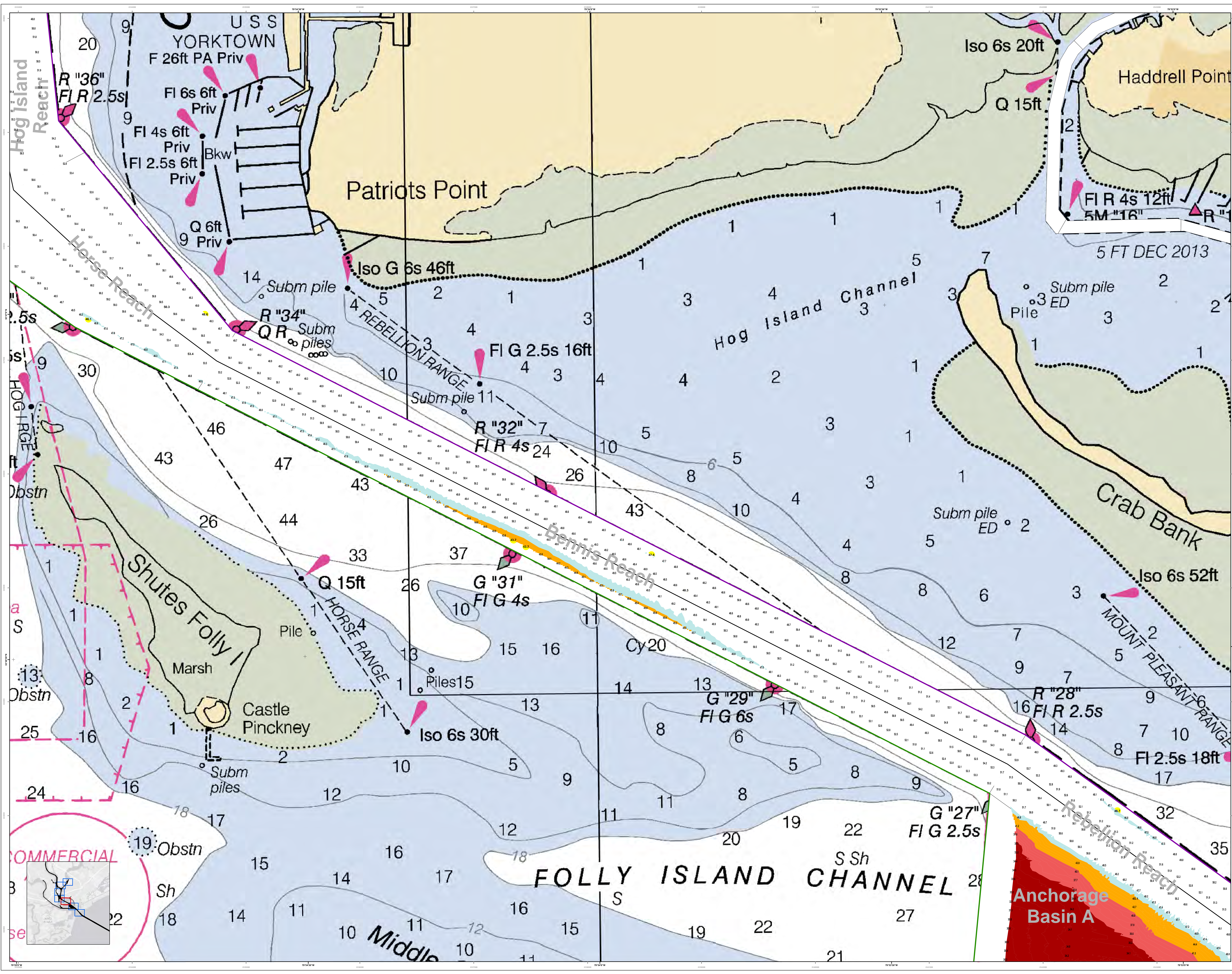


Legend

Symbol	Description
[Symbol]	Obstruction
[Symbol]	Light
[Symbol]	Range
[Symbol]	Isobath
[Symbol]	Channel
[Symbol]	Bank
[Symbol]	Marsh
[Symbol]	Shoal
[Symbol]	Submerged Pile
[Symbol]	Obstruction
[Symbol]	Light
[Symbol]	Range
[Symbol]	Isobath
[Symbol]	Channel
[Symbol]	Bank
[Symbol]	Marsh
[Symbol]	Shoal
[Symbol]	Submerged Pile

Designed By:	U.S. Army Corps of Engineers, Charleston District Office, Special Data Branch
Reviewed By:	U.S. Army Corps of Engineers, Charleston District Office, Special Data Branch
Production Date:	20 OCT 2015
Project Reference Number:	15-300
Survey System:	[CONDITION]
Projection:	NAD 1983 StatePlane South Carolina FIPS 3900 Feet

Charleston Lower Harbor Channel  
The information depicted on this chart represents the results of surveys made on the dates indicated and call on the conditions existing at that time.  
Concluded on: 20-OCT-2015  
Charleston, South Carolina



In the event the U.S. Army Corps of Engineers, Charleston District Office, is required to provide hydrographic information for use in a non-navigational or non-military activity, such as a port of call, the user is advised to contact the District Office for more information. These data were collected from a survey conducted by the Corps of Engineers and are not intended to be used for navigation. The user is advised to use the information provided in this report as a general guide only. The user is encouraged to use all prudent safety measures.

Production Notes:  
1. This is a hydrographic chart of a navigable waterway.  
2. The chart is based on the data provided in the report and is not intended to be used for navigation.  
3. The user is advised to use the information provided in this report as a general guide only.  
4. The user is encouraged to use all prudent safety measures.

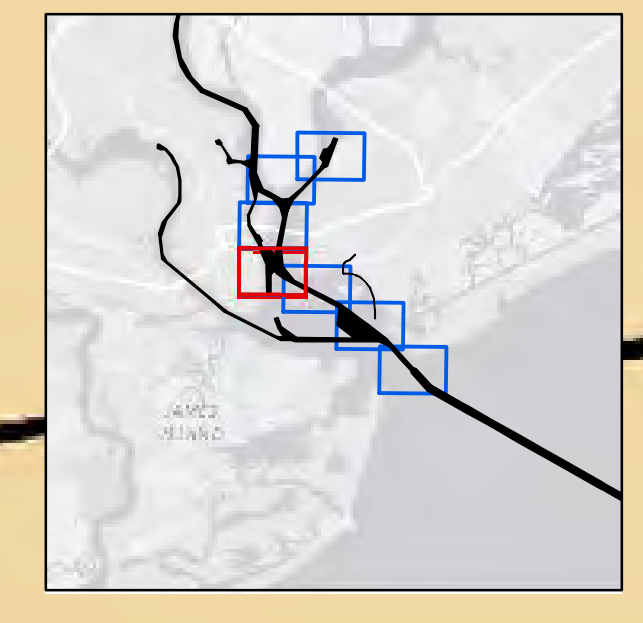
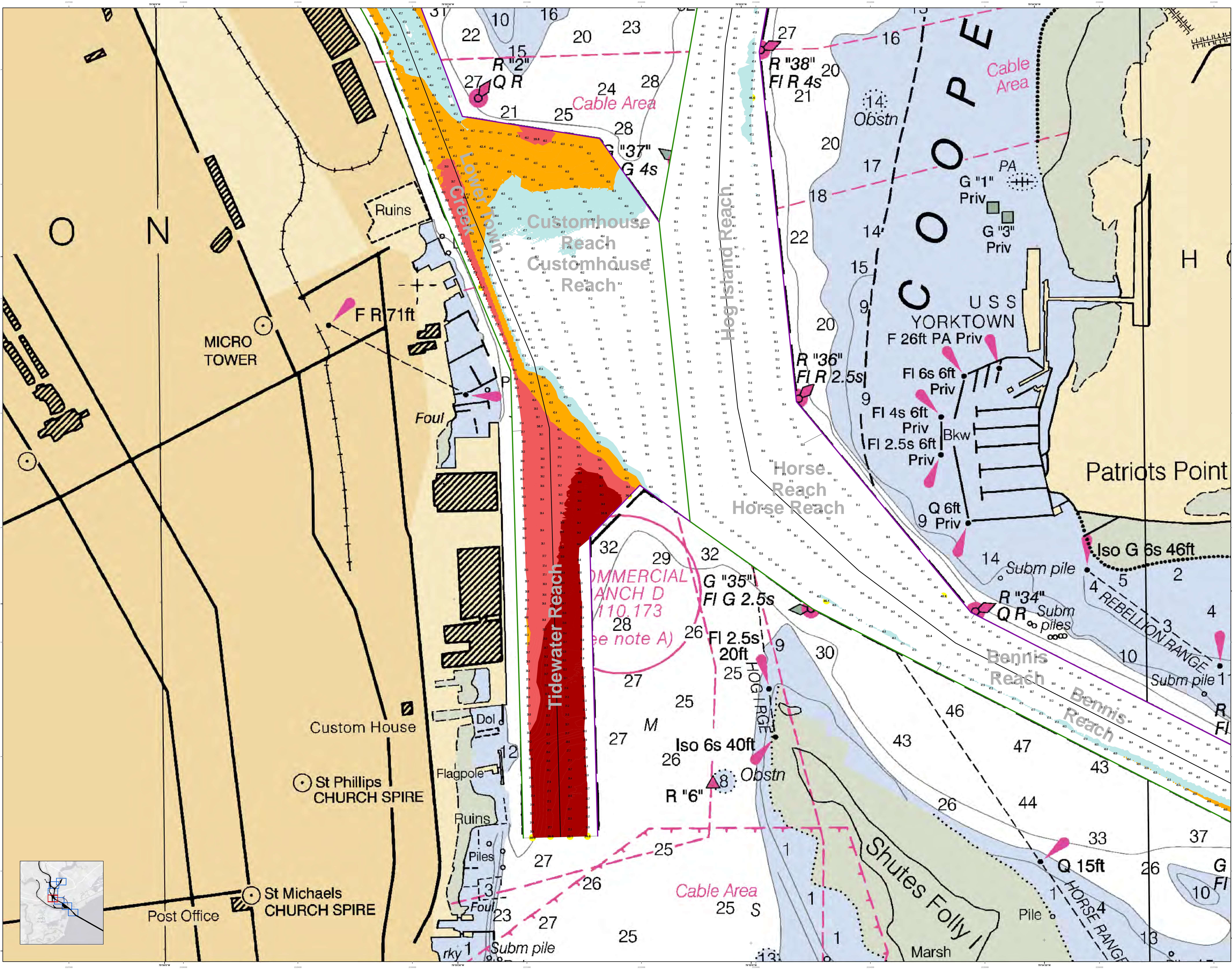
Scale: 1 inch = 200 feet

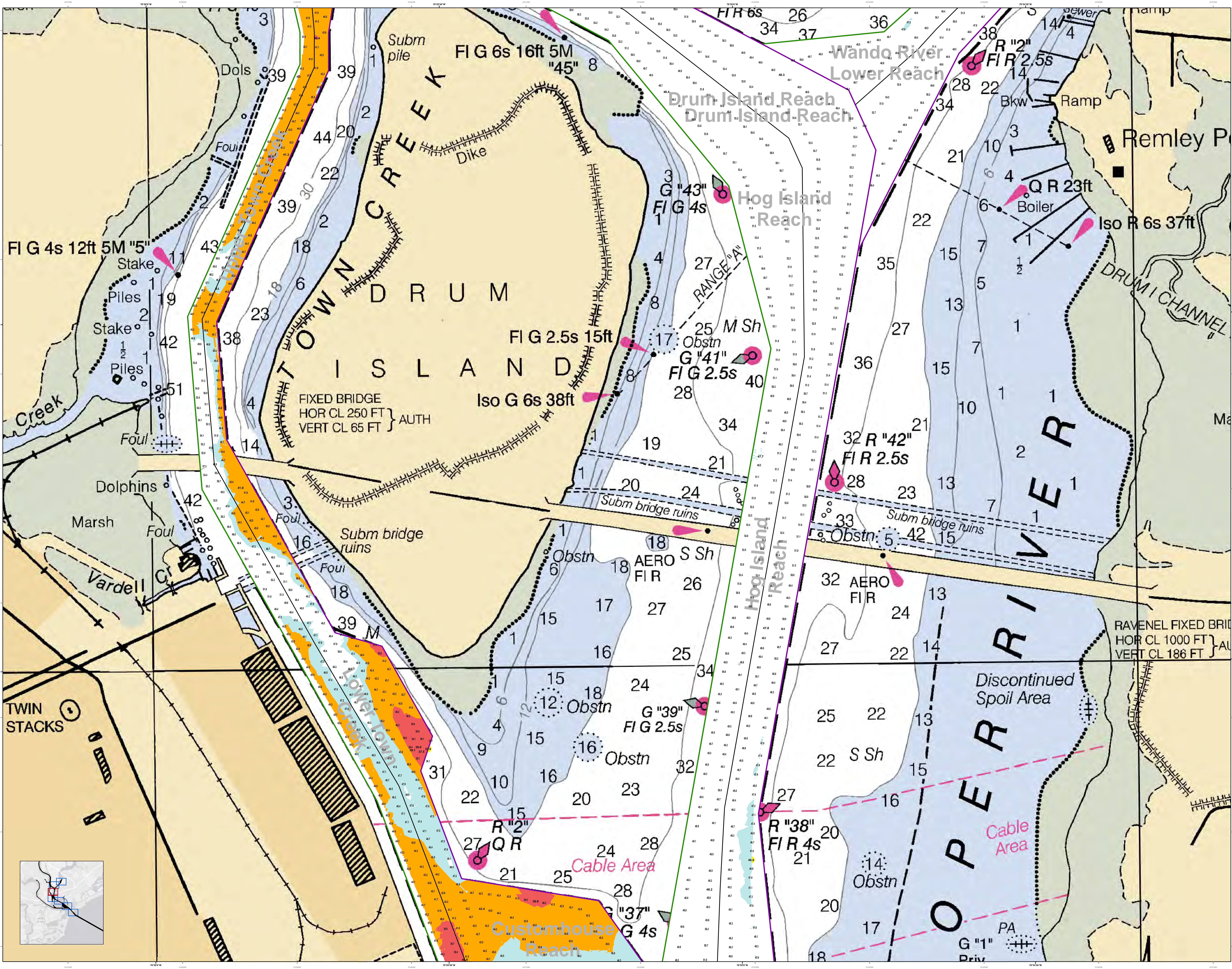
Legend:

- Color Scale: 1: 1-100, 2: 101-200, 3: 201-300, 4: 301-400, 5: 401-500, 6: 501-600, 7: 601-700, 8: 701-800, 9: 801-900, 10: 901-1000
- Obst: Obstruction
- Priv: Private
- PA: Port of Arrival
- FL: Fathom Light
- FI: Fathom Light
- Q: Quick Light
- Subm pile: Submerged Pile
- Subm piles: Submerged Piles

Designed By:	U.S. Army Corps of Engineers
Reviewed By:	U.S. Army Corps of Engineers
Approved By:	U.S. Army Corps of Engineers
Scale:	1 inch = 242 feet
Projection:	NAD 1983 StatePlane South Carolina FPS 3900 Feet
Survey Date:	20 OCT 2015
Production Date:	20 NOV 2015
Project Reference Number:	HC00010
Survey Station:	[CONITION]

Charleston Harbor Channel  
The information depicted on this map represents the results of surveys made on the dates indicated and is not intended to be used for navigation. The user is advised to use the information provided in this report as a general guide only. The user is encouraged to use all prudent safety measures.  
Charleston, South Carolina  
Concluded on: 20-OCT-2015





U.S. Army Corps of Engineers  
Charleston District

**Production Notes:**  
 1. This chart was produced by the Charleston District Office, Charleston, South Carolina, under the authority of the Chief of Engineers, U.S. Army Corps of Engineers.  
 2. This chart is a reproduction of the original chart and is not to be used for navigation.  
 3. This chart is not to be used for navigation.  
 4. This chart is not to be used for navigation.  
 5. This chart is not to be used for navigation.  
 6. This chart is not to be used for navigation.  
 7. This chart is not to be used for navigation.  
 8. This chart is not to be used for navigation.  
 9. This chart is not to be used for navigation.  
 10. This chart is not to be used for navigation.

**Legend:**  
 Depth Soundings: 1, 2, 3, 4, 5, 6, 7, 8, 9, 10, 11, 12, 13, 14, 15, 16, 17, 18, 19, 20, 21, 22, 23, 24, 25, 26, 27, 28, 29, 30, 31, 32, 33, 34, 35, 36, 37, 38, 39, 40, 41, 42, 43, 44, 45  
 Navigational Aids: Buoy, Obstruction, Light, Daymark, Beacon, Spar Buoy, Mole Buoy, Tidal Gauge, etc.  
 Structures: Bridge, Subm bridge ruins, Ramp, Boiler, etc.  
 Other: Cable Area, Discontinued Spoil Area, etc.

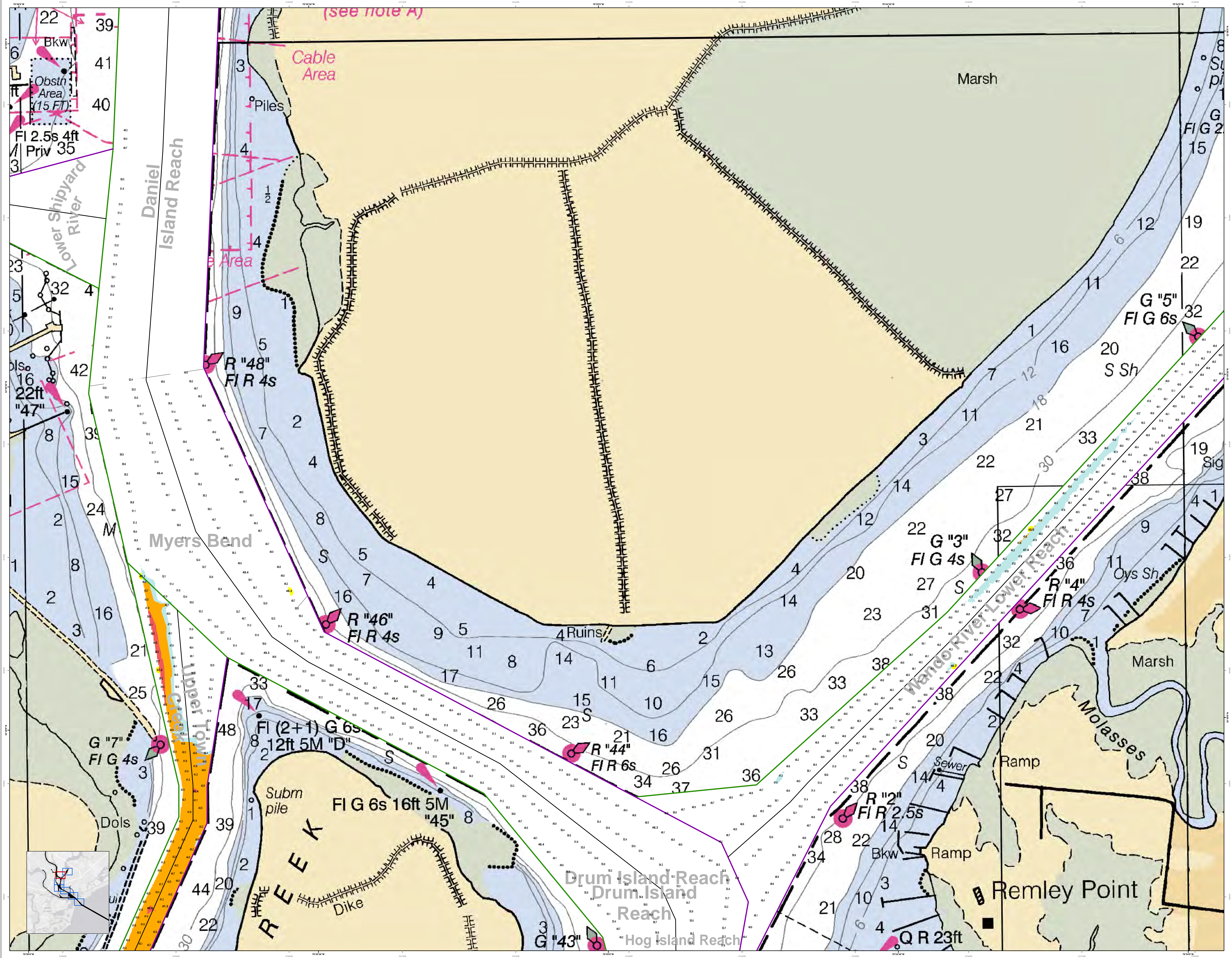
**Scale:** 1 inch = 242 feet  
**Projection:** NAD 1983 StatePlane South Carolina FIPS 3900 Feet

**Production Date:** 20 OCT 2015  
**Survey Date:** 20 OCT 2015  
**Project Reference Number:** [REDACTED]  
**Scale:** 1:24,200  
**Reference Scale:** 1 inch = 242 feet  
**Projection:** NAD 1983 StatePlane South Carolina FIPS 3900 Feet

**U.S. Army Corps of Engineers**  
 DISTRICT OFFICE  
 CHARLESTON DISTRICT  
 CHARLESTON, SOUTH CAROLINA  
 600 EAST BAY STREET  
 CHARLESTON, SC 29403  
 CESAC-GIS/USACE-ARMY/AVIL

**Charleston Harbor Channel**  
 The information depicted on this chart represents the results of surveys made on the dates indicated and call on other charts for general information and conditions existing at that time.  
 Concluded on: 20-OCT-2015  
 Charleston, South Carolina

**SHEET REFERENCE NUMBER**  
 C002  
 SHEET 5 OF 7



**U.S. Army Corps of Engineers**  
Charleston District

**Production Notes:**  
1. This chart is a preliminary product and is subject to change without notice.  
2. Soundings are in feet unless otherwise noted.  
3. Bearings are in true unless otherwise noted.  
4. Distances are in feet unless otherwise noted.  
5. All other data are as shown.  
6. This chart is not to be used for navigation.

**Legend:**

- Soundings: Depth soundings in feet.
- Beacon: Symbols for various navigational beacons.
- Obstruction: Symbols for obstructions.
- Channel: Symbols for channel boundaries.
- Dike: Symbols for dike structures.
- Marsh: Symbols for marsh areas.
- Structure: Symbols for various structures.

**Scale:** 1 inch = 242 feet

**Projection:** NAD 1983 StatePlane South Carolina FIPS 3900 Feet

**Production Date:** 20 OCT 2015

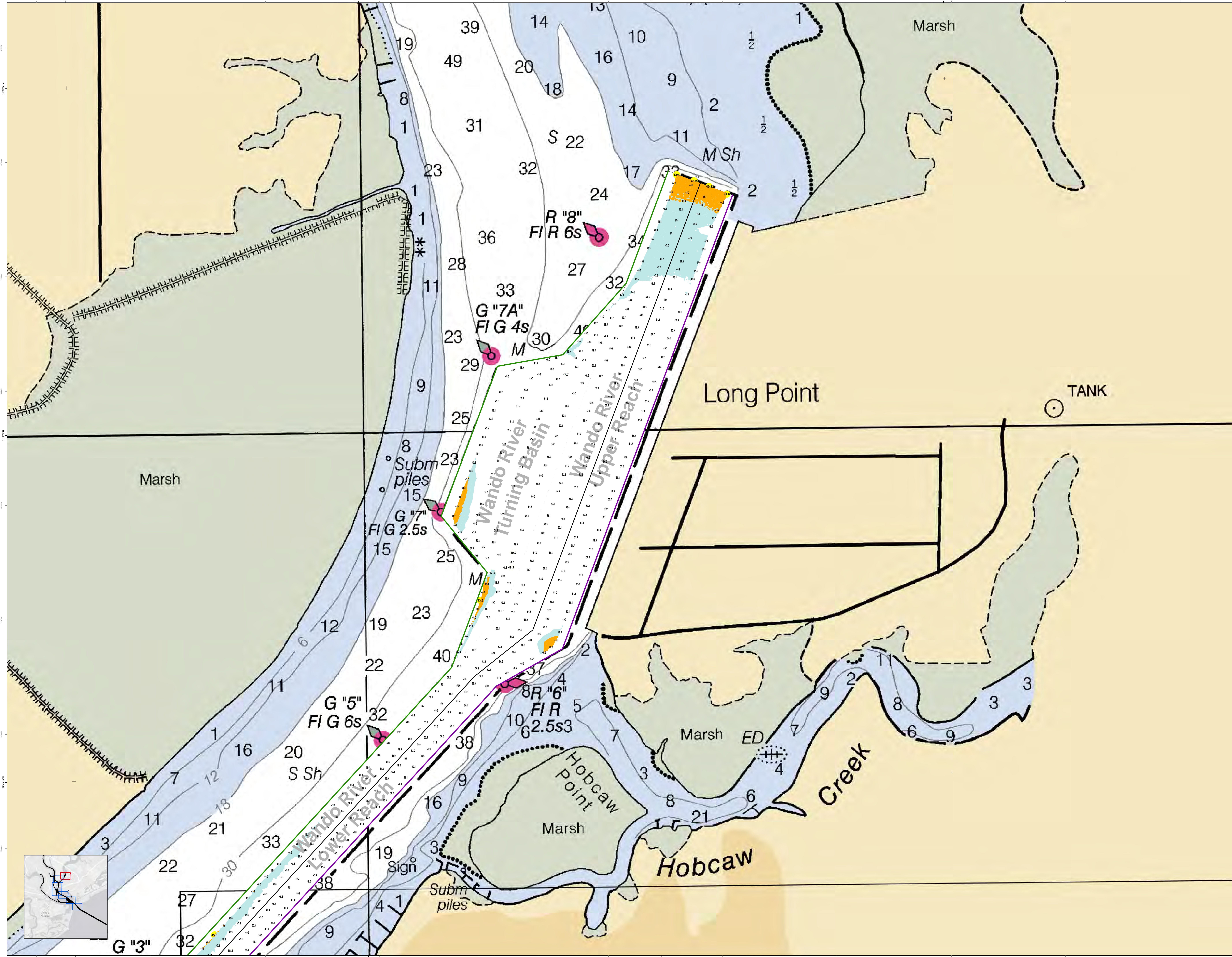
**Project Reference Number:** [REDACTED]

**Survey Date:** 20 OCT 2015

**Scale:** 1 inch = 242 feet

**Charleston Harbor Channel**  
The information depicted on this chart represents the results of surveys made on the dates indicated and call out on other sheets of this chart. General conditions existing at that time.  
Concluded on: 20-OCT-2015  
Charleston, South Carolina

**SHEET REFERENCE NUMBER:** C002  
**SHEET 6 OF 7**



**U.S. Army Corps of Engineers**  
Charleston District

**Production Notes:**  
 1. This chart is a hydrographic chart. It is not a nautical chart.  
 2. This chart is not a substitute for a nautical chart.  
 3. This chart is not a substitute for a nautical chart.  
 4. This chart is not a substitute for a nautical chart.  
 5. This chart is not a substitute for a nautical chart.  
 6. This chart is not a substitute for a nautical chart.  
 7. This chart is not a substitute for a nautical chart.  
 8. This chart is not a substitute for a nautical chart.  
 9. This chart is not a substitute for a nautical chart.  
 10. This chart is not a substitute for a nautical chart.

**Legend:**  
 Shaded Areas: 1. Shaded Areas: 1. Shaded Areas: 1. Shaded Areas: 1. Shaded Areas: 1.  
 Symbols: 1. Symbols: 1. Symbols: 1. Symbols: 1. Symbols: 1.  
 Lines: 1. Lines: 1. Lines: 1. Lines: 1. Lines: 1.

**Scale:**  
 0 125 250 500 750 Feet

**Production Date:** 20 OCT 2015  
**Project Reference Number:** [CONDITION]  
**Scale:** 1 inch = 242 feet  
**Projection:** NAD 1983 StatePlane South Carolina FIPS 3900 Feet

**Designed By:** [NAME]  
**Reviewed By:** [NAME]  
**Checked By:** [NAME]

**U.S. Army Corps of Engineers**  
 CHARLESTON DISTRICT  
 CHARLESTON, SOUTH CAROLINA  
 SBYAL BAY BRANCH  
 80A MAGDOON AVE  
 CHARLESTON, SC 29403  
 CESAC-GIS@USACE.ARMY.MIL

**Charleston Lower Harbor Channel**  
 The information depicted on this map represents the results of surveys made on the dates indicated and can only be used for general information purposes. It is not intended to be used for navigation. Concluded on: 20-OCT-2015  
 Charleston, South Carolina

**SHEET REFERENCE NUMBER**  
 C002  
 SHEET 7 OF 7