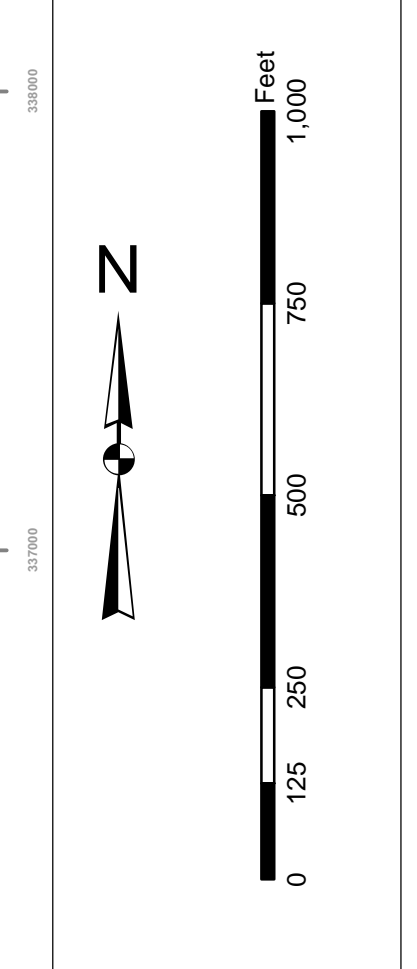


Production Note:
 1. This chart was produced by the U.S. Army Corps of Engineers, Charleston District Office.
 2. The information on this chart is based on the data provided to the Corps of Engineers by the South Carolina Department of Transportation (SCDOT) and other sources.
 3. The Corps of Engineers is not responsible for the accuracy or completeness of the information provided by these sources.
 4. The Corps of Engineers is not responsible for the accuracy or completeness of the information provided by these sources.
 5. The Corps of Engineers is not responsible for the accuracy or completeness of the information provided by these sources.
 6. The Corps of Engineers is not responsible for the accuracy or completeness of the information provided by these sources.
 7. The Corps of Engineers is not responsible for the accuracy or completeness of the information provided by these sources.
 8. The Corps of Engineers is not responsible for the accuracy or completeness of the information provided by these sources.
 9. The Corps of Engineers is not responsible for the accuracy or completeness of the information provided by these sources.
 10. The Corps of Engineers is not responsible for the accuracy or completeness of the information provided by these sources.

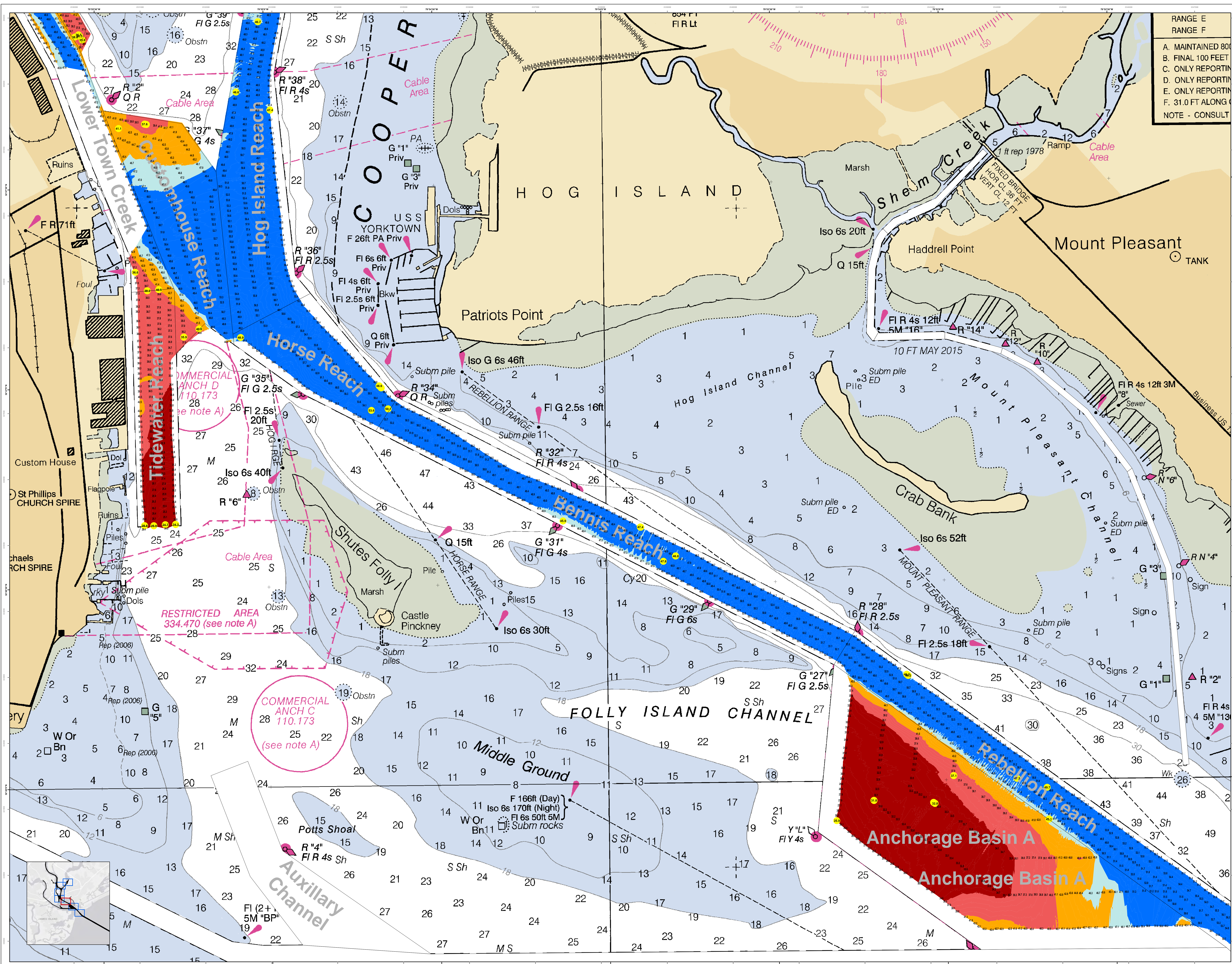


Legend

Symbol	Description
[Red Circle]	Light
[Blue Circle]	Buoy
[Black Triangle]	Obstruction
[Dashed Line]	Channel
[Dotted Line]	Shoal
[Green Area]	Marsh
[Yellow Area]	Marsh
[Blue Area]	Water
[Black Line]	Jetty
[Red Line]	Demarcation Line

U.S. Army Corps of Engineers District Office Charleston District Office Charleston, South Carolina	Survey Date: 20 MAR 2018	Production Date: 22 MAR 2018
Charleston District Office Charleston, South Carolina	Project Reference Number: 150024	Project Reference Number: 150024
Scale: 1 inch = 419 Feet	Scale: 1 inch = 419 Feet	Scale: 1 inch = 419 Feet
Projection: NAD 83 StatePlane South Carolina FIPS 3800 Feet	Projection: NAD 83 StatePlane South Carolina FIPS 3800 Feet	Projection: NAD 83 StatePlane South Carolina FIPS 3800 Feet

Charleston Harbor Channel
 The information depicted on this chart represents the results of surveys made on the dates indicated and call out on the dates indicated in the general conditions existing at that time.
 Concluded on: 20 MAR 2018
 Charleston, South Carolina



RANGE E
RANGE F

A. MAINTAINED 80 FT
B. FINAL 100 FEET
C. ONLY REPORTING
D. ONLY REPORTING
E. ONLY REPORTING
F. 31.0 FT ALONG
NOTE - CONSULT



Production Notes:

1. This is a preliminary chart. It is not to be used for navigation.

2. This chart is based on the following data:

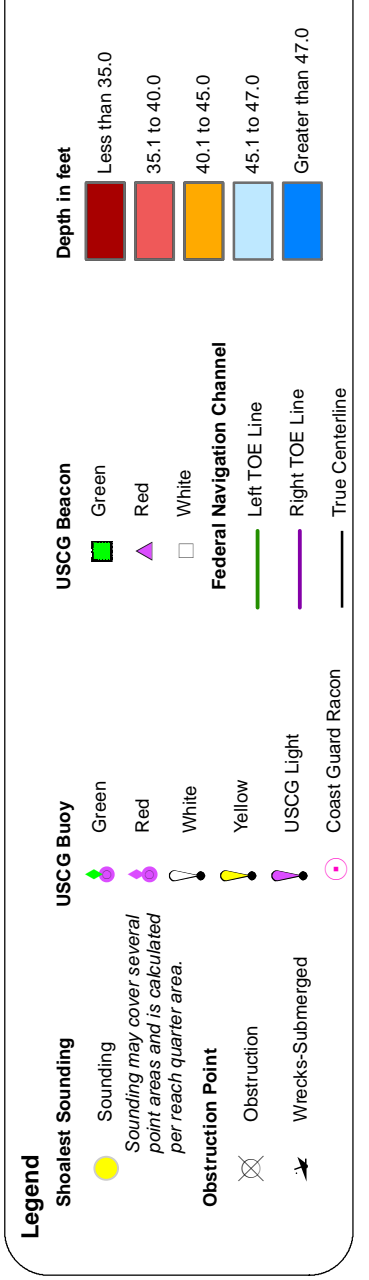
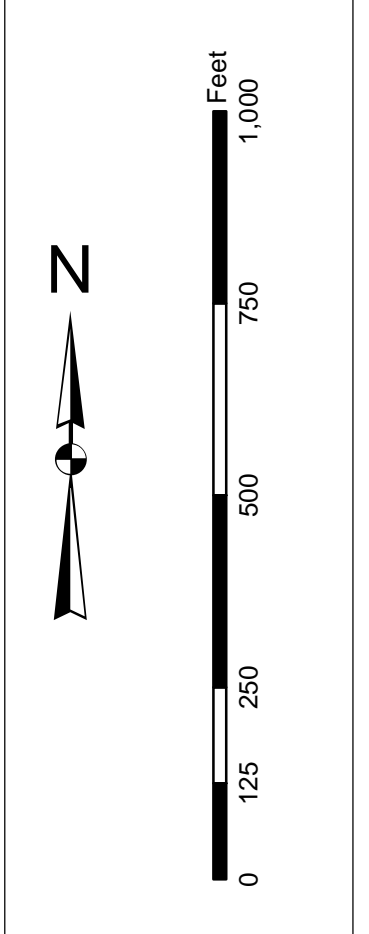
- Hydrographic Survey: 15024
- Chart: 110.173
- Scale: 1 inch = 419 feet
- Projection: MAD 1983 StatePlane South Carolina FIPS 3900 Feet

3. Soundings are in feet unless otherwise noted.

4. Bearings are in degrees true unless otherwise noted.

5. Magnetic variation is 7.5° E in 2020 and will be 8.5° E in 2030.

6. The information on this chart is not to be used for navigation.



Designed By:	U.S. Army Corps of Engineers	Production Date:	20 MAR 2018
Reviewed By:	U.S. Army Corps of Engineers	Project Reference Number:	15024
Scale:	1 inch = 419 feet	Chart Number:	110.173
Projection:	MAD 1983 StatePlane South Carolina FIPS 3900 Feet	Condition:	CONDITION

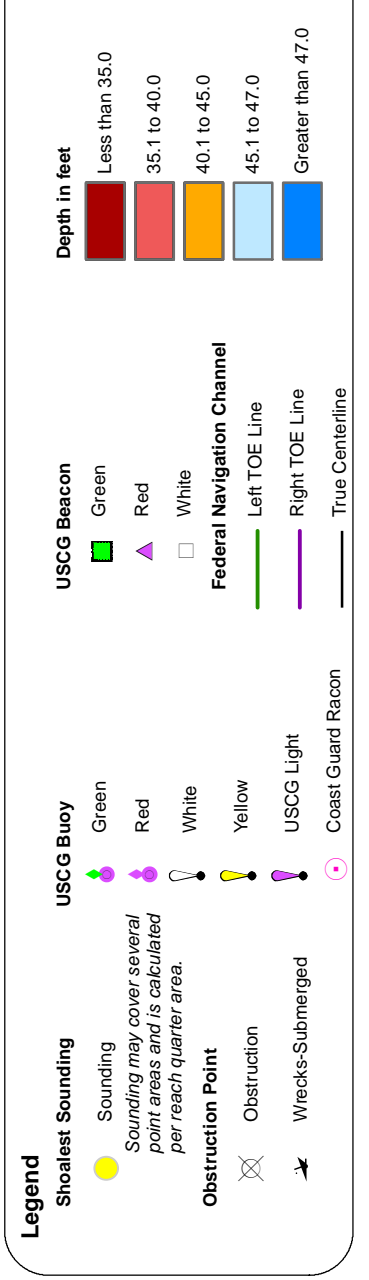
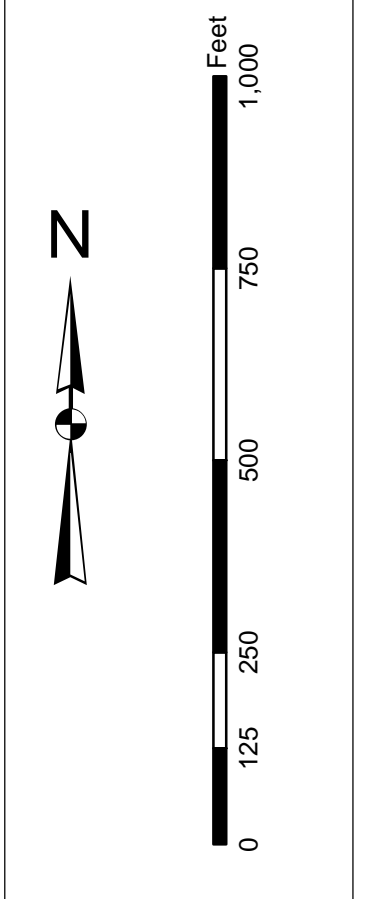
Charleston Harbor Channel

The information depicted on this map represents the results of surveys made on the dates indicated and call on the dates indicated. It is not to be used for navigation under conditions existing at that time.

Concluded on: 20 MAR 2018

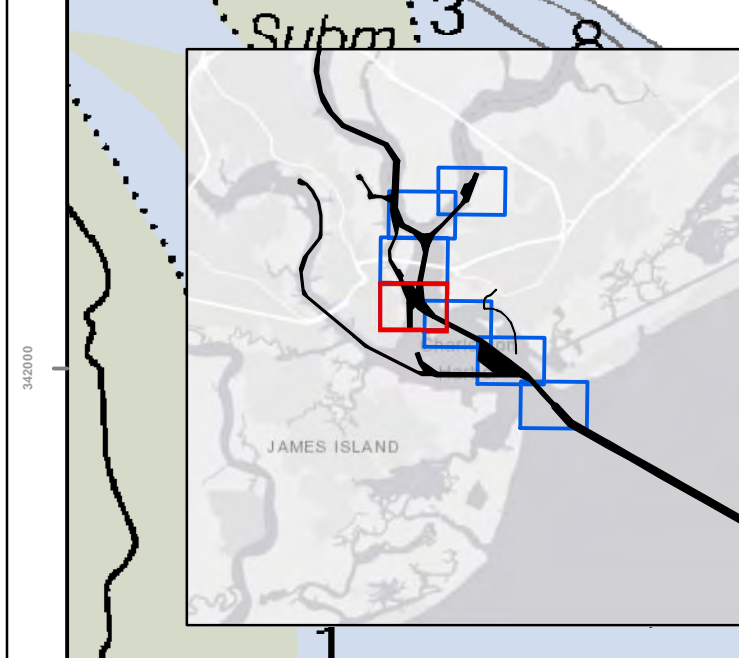
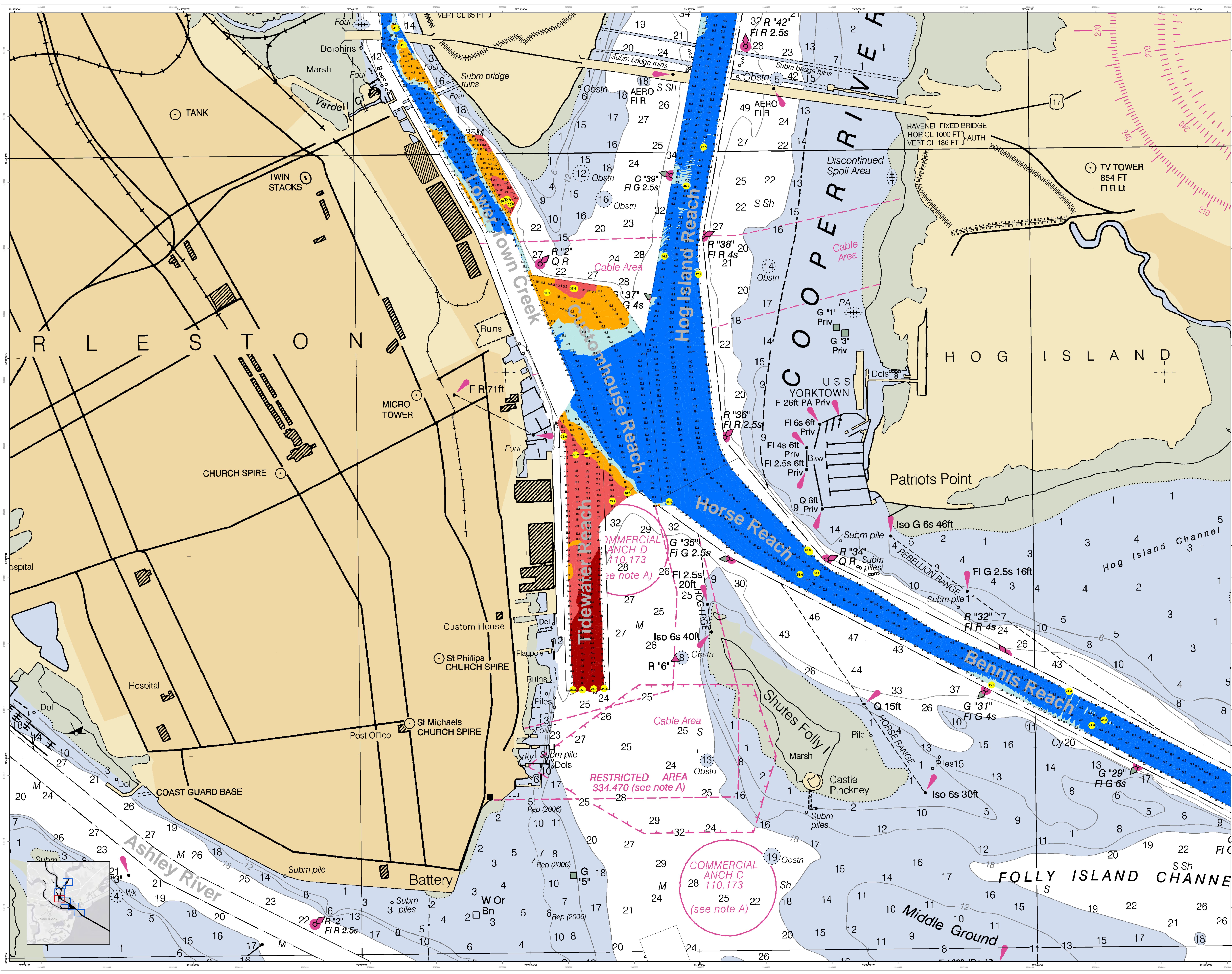
Charleston, South Carolina

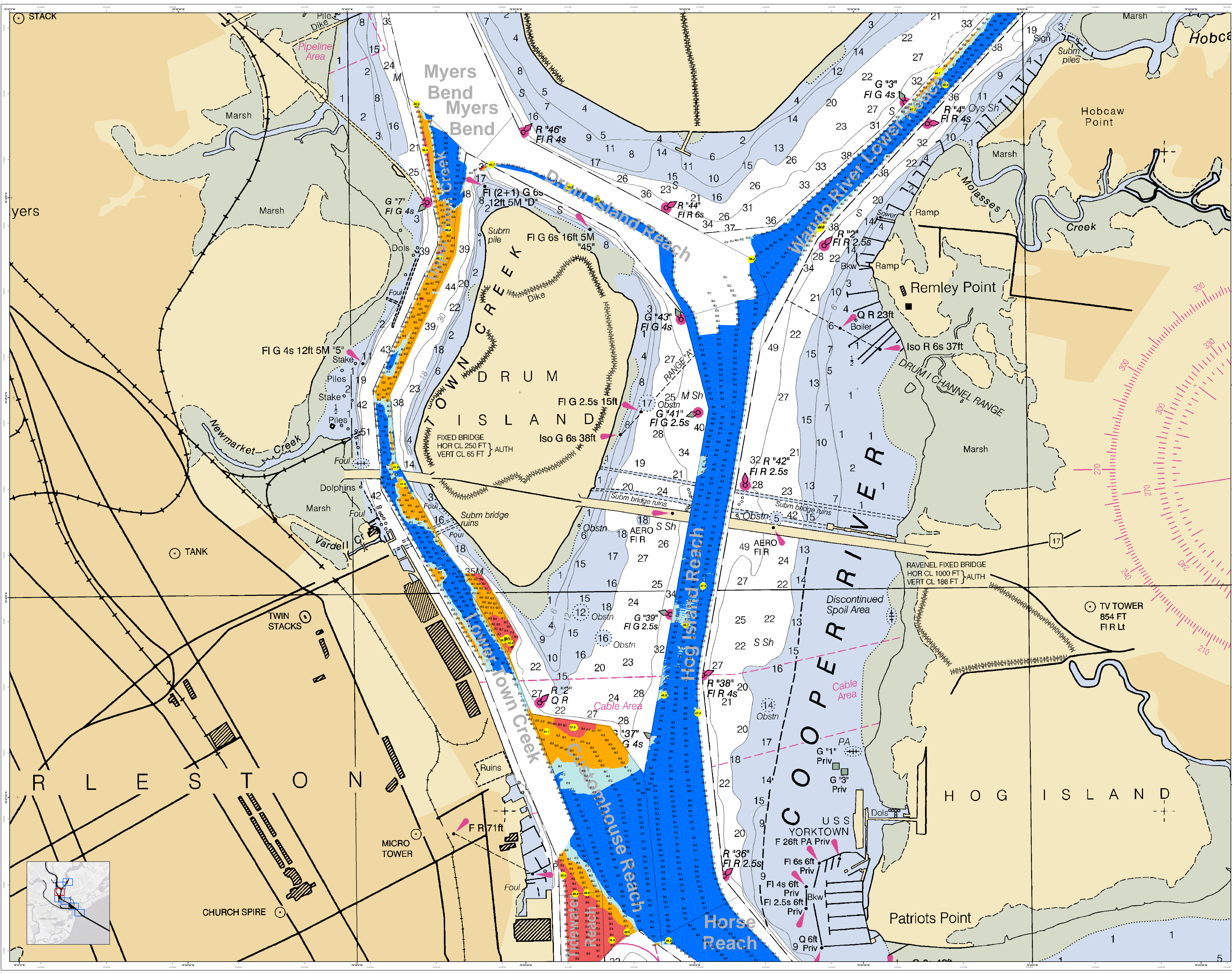
Production Notes:
1. This is a preliminary chart and should not be used for navigation.
2. All data is based on the latest available information.
3. Obstructions are shown in red and yellow.
4. Soundings are in feet unless otherwise noted.
5. The datum is Mean Low Water (MLW).
6. The chart is based on the following data:
a. Hydrographic Survey of the Charleston Harbor, 2018.
b. Bathymetric Survey of the Charleston Harbor, 2018.
c. Aerial Photography of the Charleston Harbor, 2018.
7. The chart is subject to change without notice.
8. Mariners are encouraged to use all prudent safety practices.



U.S. Army Corps of Engineers Charleston District Charleston, South Carolina Barracks 2000 Ave Charleston, SC 29405 CESAC-GIS/USACE-ARMYMAIL	Designed By: J. B. ... Reviewed By: T. S. ... Scale: 1 inch = 419 feet Projection: NAD 1983 StatePlane South Carolina FIPS 3900 Feet	Survey Date: 20 MAR 2018 Production Date: 22 MAR 2018 Project Reference Number: ... Chart Number: ... Condition: ...
--	---	--

Charleston Lower Harbor Channel
The information depicted on this chart represents the results of surveys made on the dates indicated and call on the dates indicated for the general conditions existing at that time.
Charleston, South Carolina
Concluded on: 20 MAR 2018





U.S. Army Corps of Engineers
Charleston District

Production Notes:
 1. This is a hydrographic chart showing water depths, soundings, and other navigational information.
 2. Soundings are in feet unless otherwise indicated.
 3. Obstructions are marked with 'O' and 'Obstn'.
 4. Navigational aids are marked with their respective symbols and codes.
 5. This chart is based on data collected from various sources, including satellite altimetry, echosoundings, and other hydrographic surveys.
 6. The chart is subject to change without notice.
 7. Mariners are encouraged to use all prudent safety measures.

Legend:
 Depth in Feet: 0-5, 5-10, 10-20, 20-30, 30-40
 Soundings: 1, 2, 3, 4, 5, 6, 7, 8, 9, 10, 11, 12, 13, 14, 15, 16, 17, 18, 19, 20, 21, 22, 23, 24, 25, 26, 27, 28, 29, 30, 31, 32, 33, 34, 35, 36, 37, 38, 39, 40, 41, 42, 43, 44, 45, 46, 47, 48, 49, 50, 51, 52, 53, 54, 55, 56, 57, 58, 59, 60, 61, 62, 63, 64, 65, 66, 67, 68, 69, 70, 71, 72, 73, 74, 75, 76, 77, 78, 79, 80, 81, 82, 83, 84, 85, 86, 87, 88, 89, 90, 91, 92, 93, 94, 95, 96, 97, 98, 99, 100
 Obstructions: 1, 2, 3, 4, 5, 6, 7, 8, 9, 10, 11, 12, 13, 14, 15, 16, 17, 18, 19, 20, 21, 22, 23, 24, 25, 26, 27, 28, 29, 30, 31, 32, 33, 34, 35, 36, 37, 38, 39, 40, 41, 42, 43, 44, 45, 46, 47, 48, 49, 50, 51, 52, 53, 54, 55, 56, 57, 58, 59, 60, 61, 62, 63, 64, 65, 66, 67, 68, 69, 70, 71, 72, 73, 74, 75, 76, 77, 78, 79, 80, 81, 82, 83, 84, 85, 86, 87, 88, 89, 90, 91, 92, 93, 94, 95, 96, 97, 98, 99, 100
 Navigational Aids: 1, 2, 3, 4, 5, 6, 7, 8, 9, 10, 11, 12, 13, 14, 15, 16, 17, 18, 19, 20, 21, 22, 23, 24, 25, 26, 27, 28, 29, 30, 31, 32, 33, 34, 35, 36, 37, 38, 39, 40, 41, 42, 43, 44, 45, 46, 47, 48, 49, 50, 51, 52, 53, 54, 55, 56, 57, 58, 59, 60, 61, 62, 63, 64, 65, 66, 67, 68, 69, 70, 71, 72, 73, 74, 75, 76, 77, 78, 79, 80, 81, 82, 83, 84, 85, 86, 87, 88, 89, 90, 91, 92, 93, 94, 95, 96, 97, 98, 99, 100

U.S. Army Corps of Engineers
Charleston District
Charleston Harbor Channel
SOUNDING DATA BRANCH
804 HARGOOD AVE
CHARLESTON, SC 29405
CESAC-GIS/USACE.ARMY.MIL

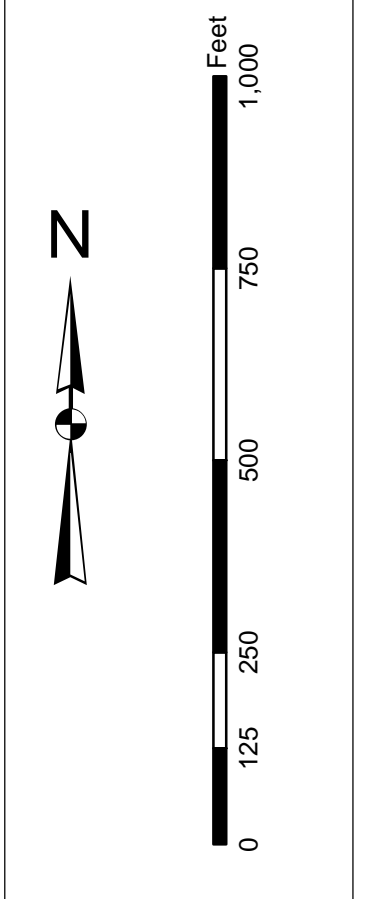
Designed By: J. B. BARNES, DISTRICT ENGINEER, CHARLESTON DISTRICT
Reviewed By: J. B. BARNES, DISTRICT ENGINEER, CHARLESTON DISTRICT
Scale: 1" = 419 Feet
Projection: NAD 1983 StatePlane South Carolina FIPS 3200 Feet

Survey Date: 20 MAR 2018
Production Date: 22 MAR 2018
Project Reference Number: 150204
Sheet Number: C002
Condition: CONDITION

Charleston Harbor Channel
The information depicted on this map represents the results of surveys made on the dates indicated and call on other sources of data to the extent of general conditions existing at that time.
Concluded on: 20 MAR 2018
Charleston, South Carolina

SHEET REFERENCE NUMBER
C002
SHEET 5 OF 7

Production Notes:
 1. This is a preliminary map. It is not to be used for navigation.
 2. This map is based on the latest available data. It is not to be used for navigation.
 3. This map is based on the latest available data. It is not to be used for navigation.
 4. This map is based on the latest available data. It is not to be used for navigation.
 5. This map is based on the latest available data. It is not to be used for navigation.
 6. This map is based on the latest available data. It is not to be used for navigation.
 7. This map is based on the latest available data. It is not to be used for navigation.
 8. This map is based on the latest available data. It is not to be used for navigation.
 9. This map is based on the latest available data. It is not to be used for navigation.
 10. This map is based on the latest available data. It is not to be used for navigation.

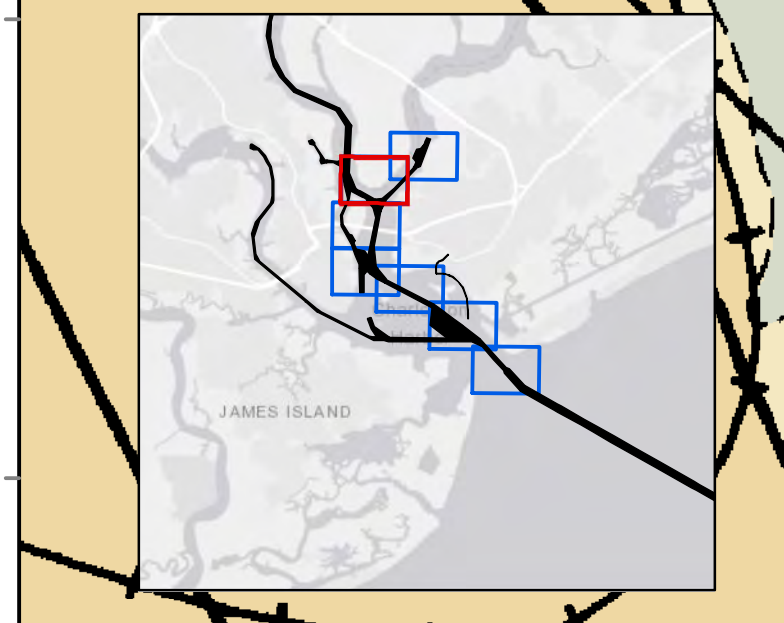
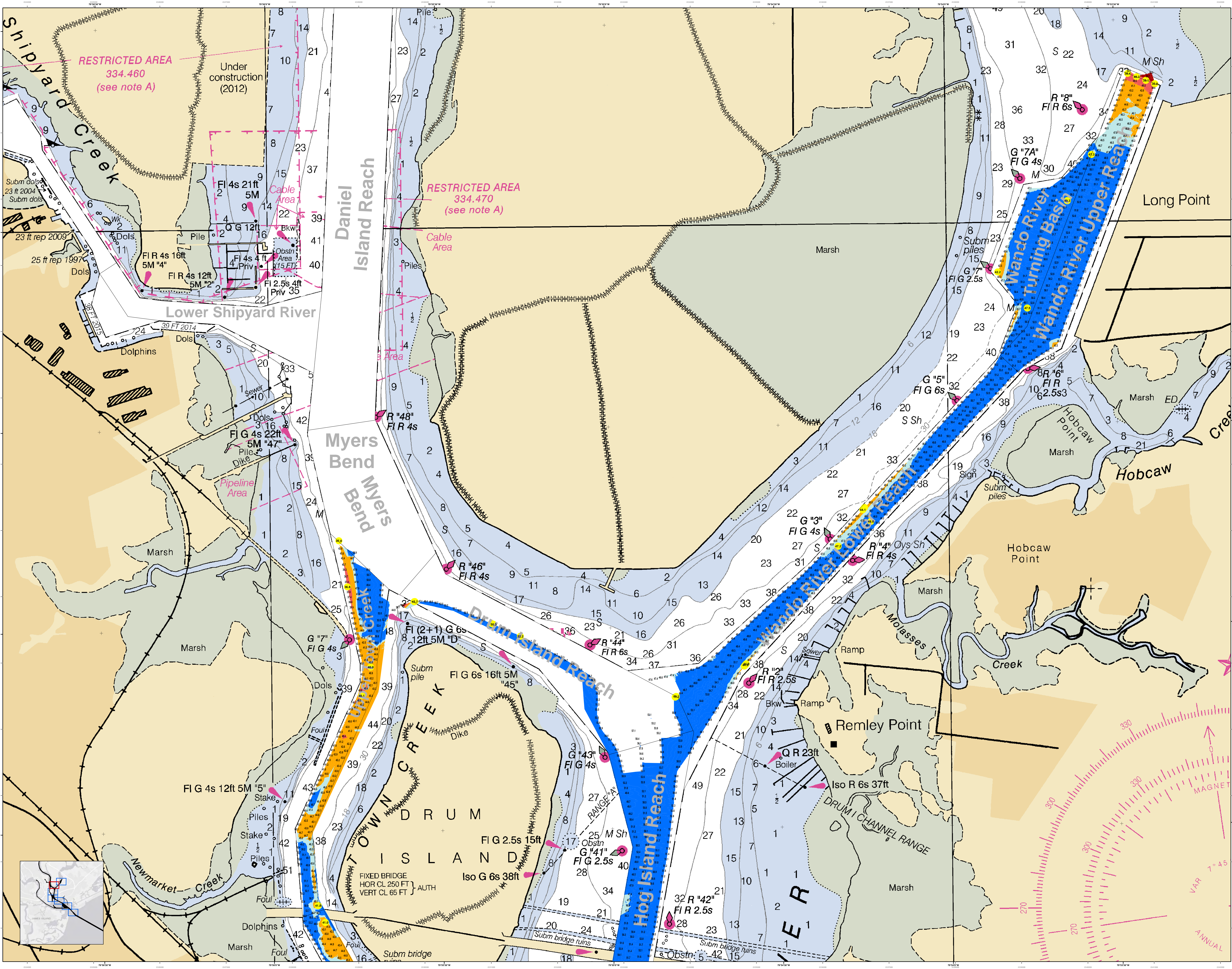


Legend:

Symbol/Color	Description
Blue	Water
Light Green	Marsh
Yellow	Submerged
Orange	Obstruction
Red	Restriction
Black	Structure
Grey	Other

Designed By:	U.S. Army Corps of Engineers Charleston District Charleston, South Carolina
Reviewed By:	U.S. Army Corps of Engineers Charleston District Charleston, South Carolina
Approved By:	U.S. Army Corps of Engineers Charleston District Charleston, South Carolina
Production Date:	20 MAR 2018
Project Reference Number:	13024
Sheet Reference Number:	C002
Scale:	1 inch = 419 Feet
Projection:	NAD 1983 StatePlane South Carolina FIPS 3900 Feet

Charleston Harbor Channel
 The information depicted on this map represents the results of surveys made on the dates indicated and call out on the map. It is not to be used for navigation. Concluded on: 20 MAR 2018
 Charleston, South Carolina



RESTRICTED AREA
334.460
(see note A)

Under construction
(2012)

RESTRICTED AREA
334.470
(see note A)

Lower Shipyard River

Myers Bend
Myers Creek

Drum Channel
Drum Island Reach

Hog Island Reach

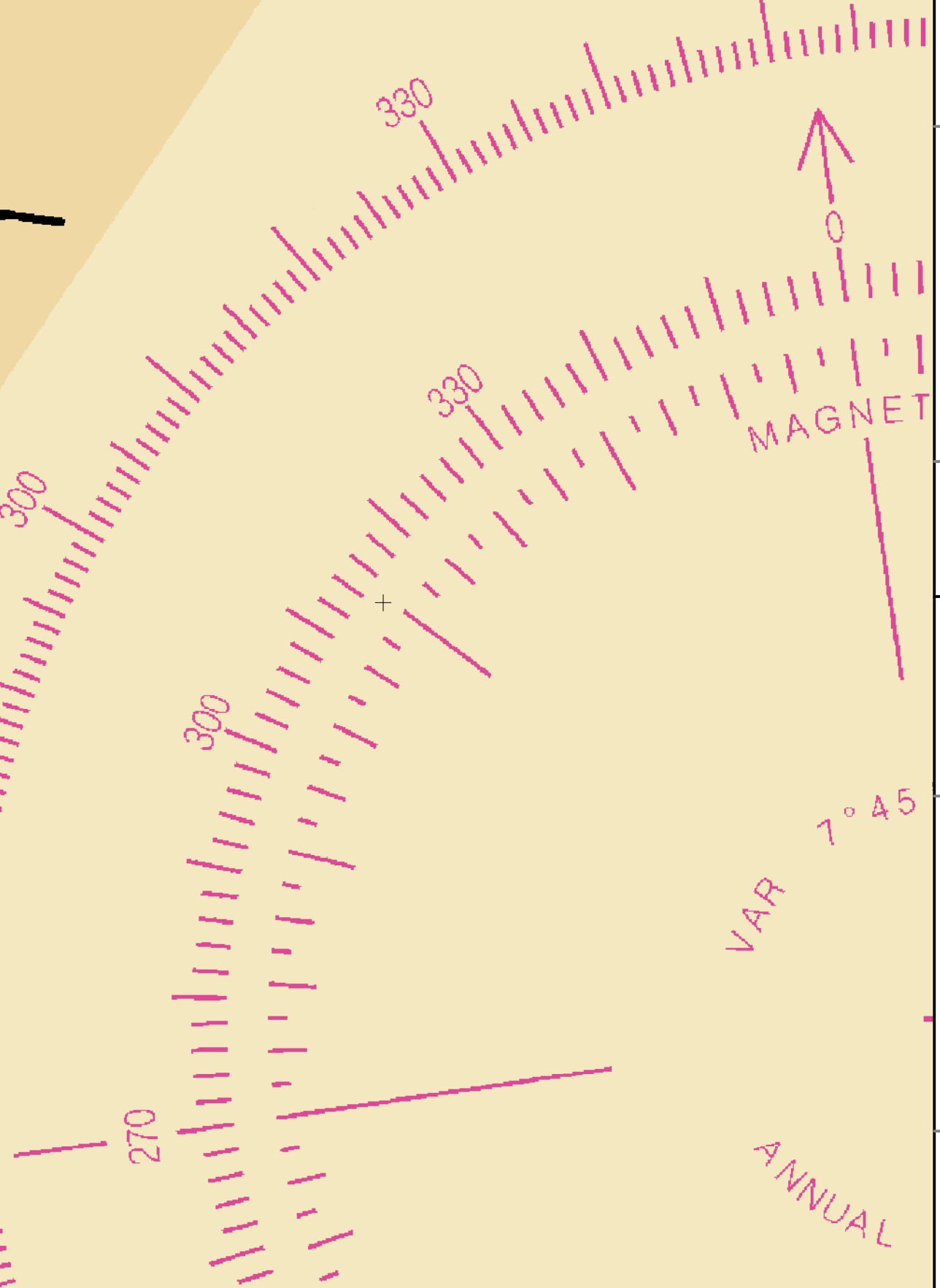
Mando River
Turning Basin
Mando River Upper Reach

Long Point

Hobcaw Point

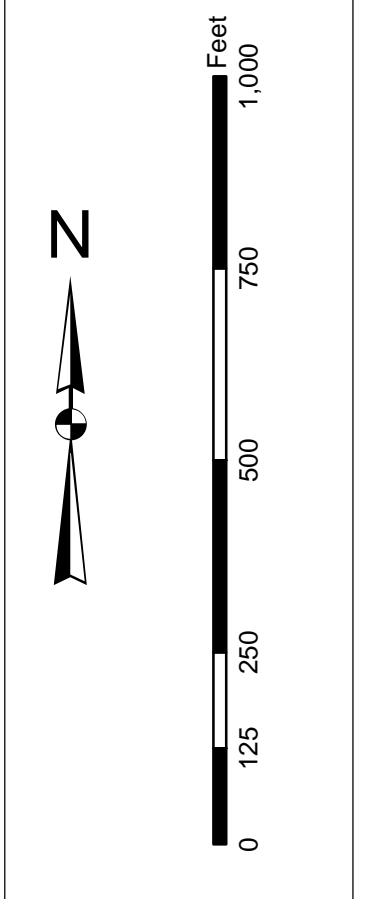
Remley Point

TOWN DRUM ISLAND
FIXED BRIDGE
HOR CL 250 FT
VERT CL 65 FT



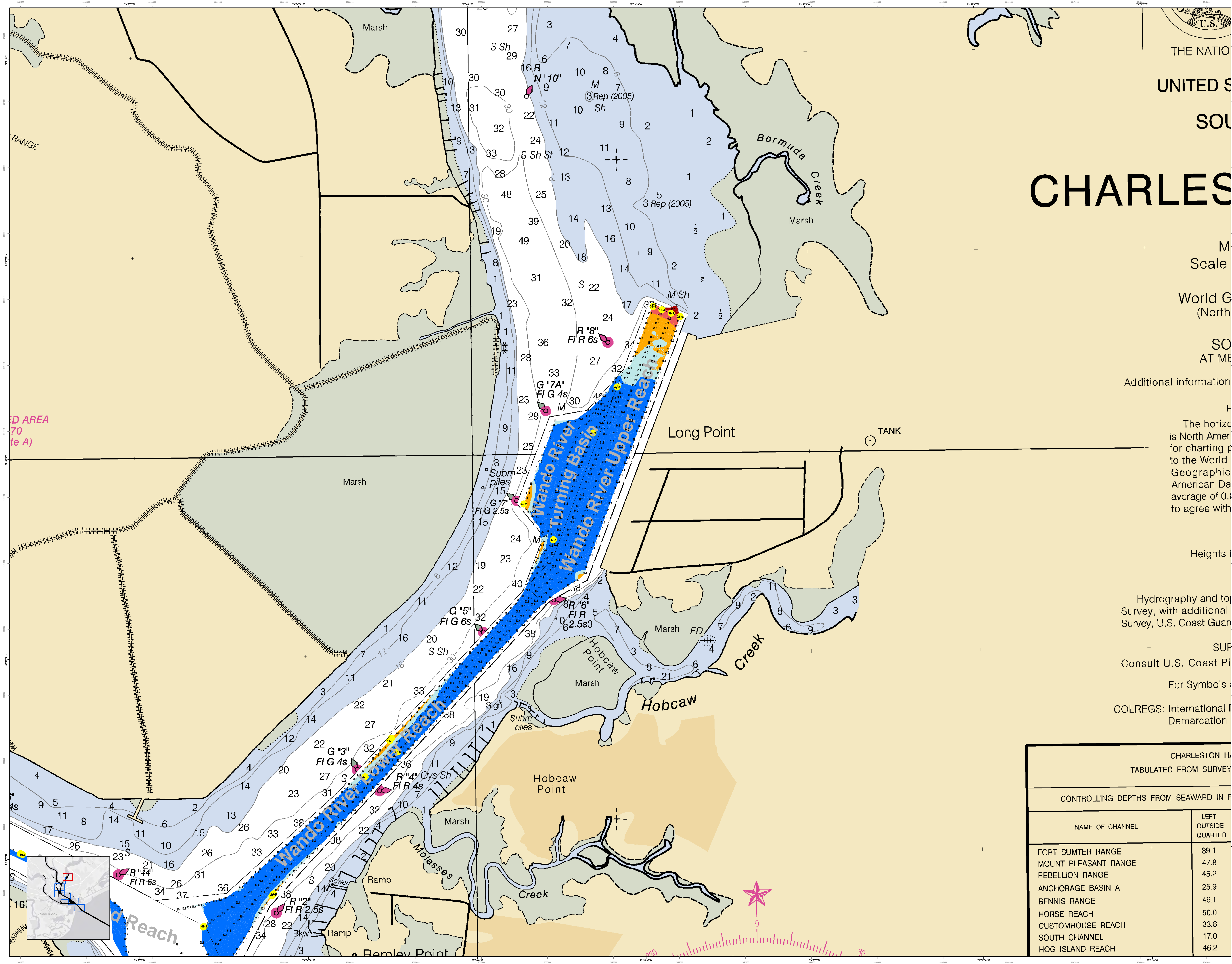
CHARLES

In the event that the U.S. Army Corps of Engineers, Charleston District Office, Special Data Branch is unable to locate, identify, or verify the data used in this publication, the user is advised that the data may not be accurate. The user is advised to verify the data used in this publication. The user is advised that the data used in this publication is not to be used for navigation. The user is advised that the data used in this publication is not to be used for navigation. The user is advised that the data used in this publication is not to be used for navigation.



Additional information

The horizontal datum is North American Datum of 1983. The vertical datum is Mean Sea Level. The chart is for charting purposes only. It is not to be used for navigation. It is not to be used for navigation. It is not to be used for navigation.



Heights

Production Date:	22 MAR 2018
Survey Date:	20 MAR 2018
Project Reference Number:	150204
Project Name:	WANDO RIVER
Project Status:	CONDITION
Scale:	1 inch = 419 feet
Projection:	NAD 1983 StatePlane South Carolina FIPS 3900 Feet

Hydrography and topography from the 2018 Survey, with additional data from the 2018 Survey, U.S. Coast Guard. Consult U.S. Coast Guard for Symbols. COLREGS: International Demarcation.

CHARLESTON HARBOUR TABULATED FROM SURVEY	
CONTROLLING DEPTHS FROM SEAWARD IN FATHOMS	
NAME OF CHANNEL	LEFT OUTSIDE QUARTER
FORT SUMTER RANGE	39.1
MOUNT PLEASANT RANGE	47.8
REBELLION RANGE	45.2
ANCHORAGE BASIN A	25.9
BENNIS RANGE	46.1
HORSE REACH	50.0
CUSTOMHOUSE REACH	33.8
SOUTH CHANNEL	17.0
HOG ISLAND REACH	46.2

Charleston Lower Harbor Channel
The information depicted on this chart represents the results of surveys made on the dates indicated and call on other charts for general information. Concluded on: 20 MAR 2018
Charleston, South Carolina

SHEET REFERENCE NUMBER: C002
SHEET 7 OF 7