

**U.S. Army Corps of Engineers**  
Charleston District

**Legend:**

- Soundings: 10, 15, 20, 25, 30, 35, 40, 45, 50, 55, 60, 65, 70, 75, 80, 85, 90, 95, 100, 105, 110, 115, 120, 125, 130, 135, 140, 145, 150, 155, 160, 165, 170, 175, 180, 185, 190, 195, 200, 205, 210, 215, 220, 225, 230, 235, 240, 245, 250, 255, 260, 265, 270, 275, 280, 285, 290, 295, 300, 305, 310, 315, 320, 325, 330, 335, 340, 345, 350, 355, 360, 365, 370, 375, 380, 385, 390, 395, 400, 405, 410, 415, 420, 425, 430, 435, 440, 445, 450, 455, 460, 465, 470, 475, 480, 485, 490, 495, 500, 505, 510, 515, 520, 525, 530, 535, 540, 545, 550, 555, 560, 565, 570, 575, 580, 585, 590, 595, 600, 605, 610, 615, 620, 625, 630, 635, 640, 645, 650, 655, 660, 665, 670, 675, 680, 685, 690, 695, 700, 705, 710, 715, 720, 725, 730, 735, 740, 745, 750, 755, 760, 765, 770, 775, 780, 785, 790, 795, 800, 805, 810, 815, 820, 825, 830, 835, 840, 845, 850, 855, 860, 865, 870, 875, 880, 885, 890, 895, 900, 905, 910, 915, 920, 925, 930, 935, 940, 945, 950, 955, 960, 965, 970, 975, 980, 985, 990, 995, 1000
- Shoals and Reefs: Sh, S Sh, M Sh, Wk
- Obstructions: Obstn
- Other: Sewer, Subm piling, Ramps, Piling, Pile

**Survey Data:**

Designed By:	CECAC/CSIS/USACE/ARMY/MIL
Reviewed By:	1:50,000
Scale:	1 inch = 250 feet
Projection:	NAD 1983 StatePlane South Carolina FIPS 3200 Feet
Survey Date:	21 MAR 2017
Project Reference Number:	PC0001D
Survey Type:	CONDITION
Condition:	CONDITION

**Ashley River Channel Condition**

Channel soundings based on single and/or multibeam surveys conducted by the U.S. Army Corps of Engineers. The Ashley River Channel Condition survey data in the overlapping areas are based on the most recent survey data in the overlapping areas.

Concluded on: **21 MAR 2017**  
Charleston, South Carolina

**SHEET REFERENCE NUMBER**  
C002  
SHEET 2 OF 7

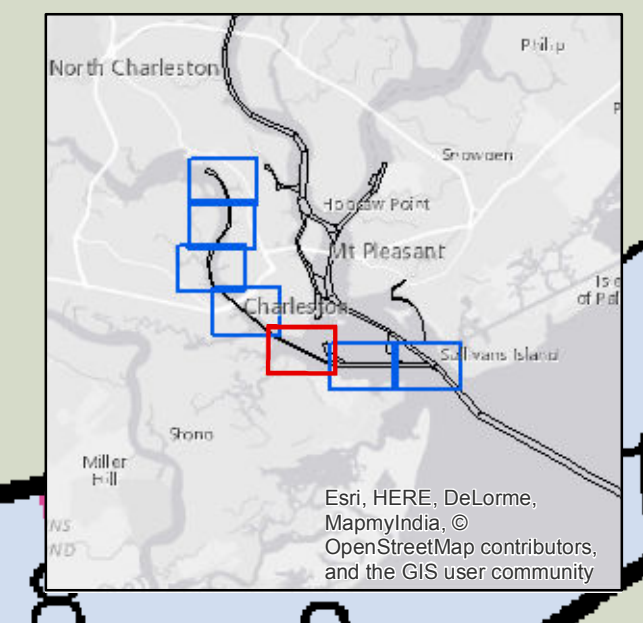
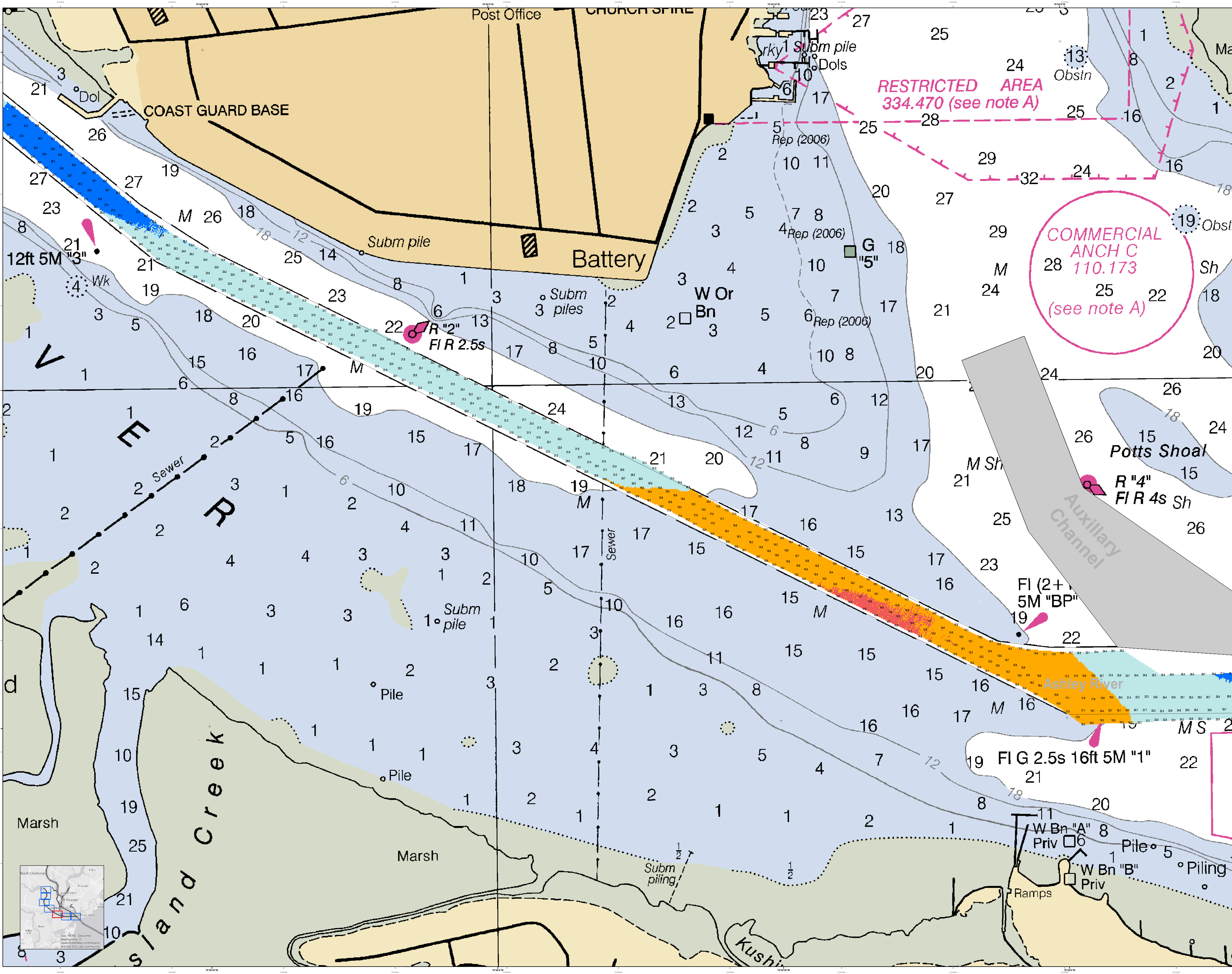
In the event that the U.S. Army Corps of Engineers, Charleston District Office, Special Data Branch is unable to contact the contractor, the contractor shall be responsible for providing the necessary information to the District Office. The contractor shall be responsible for providing the necessary information to the District Office. The contractor shall be responsible for providing the necessary information to the District Office.

Production Notes:  
1. This chart is produced in accordance with the U.S. Army Corps of Engineers, Charleston District Office, Special Data Branch, Standard for Hydrographic Surveys, Edition 15, 1993, and the U.S. Army Corps of Engineers, Charleston District Office, Special Data Branch, Standard for Hydrographic Surveys, Edition 15, 1993, and the U.S. Army Corps of Engineers, Charleston District Office, Special Data Branch, Standard for Hydrographic Surveys, Edition 15, 1993.

Legend:  
Soundings: 1: 1983 StatePlane South Carolina EPS 3900 Feet  
2: 1983 StatePlane South Carolina EPS 3900 Feet  
3: 1983 StatePlane South Carolina EPS 3900 Feet  
4: 1983 StatePlane South Carolina EPS 3900 Feet  
5: 1983 StatePlane South Carolina EPS 3900 Feet  
6: 1983 StatePlane South Carolina EPS 3900 Feet  
7: 1983 StatePlane South Carolina EPS 3900 Feet  
8: 1983 StatePlane South Carolina EPS 3900 Feet  
9: 1983 StatePlane South Carolina EPS 3900 Feet  
10: 1983 StatePlane South Carolina EPS 3900 Feet  
11: 1983 StatePlane South Carolina EPS 3900 Feet  
12: 1983 StatePlane South Carolina EPS 3900 Feet  
13: 1983 StatePlane South Carolina EPS 3900 Feet  
14: 1983 StatePlane South Carolina EPS 3900 Feet  
15: 1983 StatePlane South Carolina EPS 3900 Feet  
16: 1983 StatePlane South Carolina EPS 3900 Feet  
17: 1983 StatePlane South Carolina EPS 3900 Feet  
18: 1983 StatePlane South Carolina EPS 3900 Feet  
19: 1983 StatePlane South Carolina EPS 3900 Feet  
20: 1983 StatePlane South Carolina EPS 3900 Feet  
21: 1983 StatePlane South Carolina EPS 3900 Feet  
22: 1983 StatePlane South Carolina EPS 3900 Feet  
23: 1983 StatePlane South Carolina EPS 3900 Feet  
24: 1983 StatePlane South Carolina EPS 3900 Feet  
25: 1983 StatePlane South Carolina EPS 3900 Feet  
26: 1983 StatePlane South Carolina EPS 3900 Feet  
27: 1983 StatePlane South Carolina EPS 3900 Feet  
28: 1983 StatePlane South Carolina EPS 3900 Feet  
29: 1983 StatePlane South Carolina EPS 3900 Feet  
30: 1983 StatePlane South Carolina EPS 3900 Feet  
31: 1983 StatePlane South Carolina EPS 3900 Feet  
32: 1983 StatePlane South Carolina EPS 3900 Feet  
33: 1983 StatePlane South Carolina EPS 3900 Feet  
34: 1983 StatePlane South Carolina EPS 3900 Feet  
35: 1983 StatePlane South Carolina EPS 3900 Feet  
36: 1983 StatePlane South Carolina EPS 3900 Feet  
37: 1983 StatePlane South Carolina EPS 3900 Feet  
38: 1983 StatePlane South Carolina EPS 3900 Feet  
39: 1983 StatePlane South Carolina EPS 3900 Feet  
40: 1983 StatePlane South Carolina EPS 3900 Feet

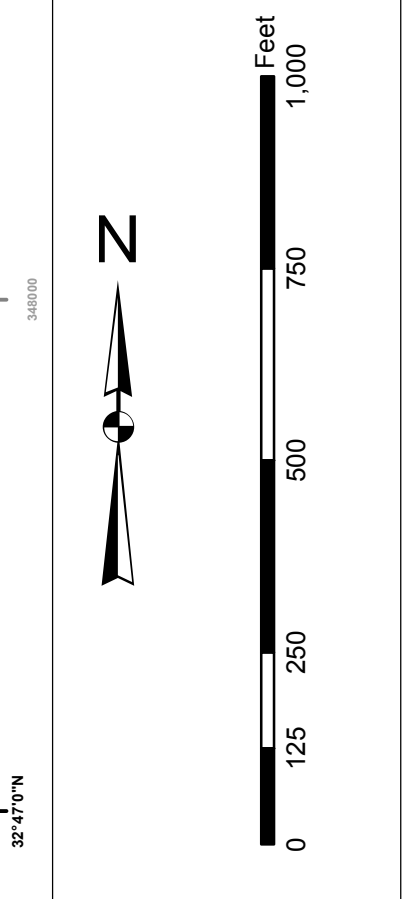
Designed By:	Hydrographic Survey v3 B2	Production Date:	1 NOV 2017
Reviewed By:	1: 15,000	Project Reference Number:	21 MAR 2017
Revised By:	1: 250 Feet	Survey Year:	2006-2007
Projection:	NAD 1983 StatePlane South Carolina EPS 3900 Feet	Survey Condition:	CONDITION

Ashley River Channel Condition  
Channel soundings based on single and/or multibeam surveys  
conducted by the U.S. Army Corps of Engineers, Charleston District  
Office, Special Data Branch, Charleston, SC 29405.  
Superseded survey data in the overlapping  
areas.  
Concluded on: 21 MAR 2017  
Charleston, South Carolina



In the event that the U.S. Army Corps of Engineers, Charleston District Office, should be unable to provide the data, charts, or information to you for any reason, the data, charts, or information were not developed from the most accurate data available. There is no warranty, expressed or implied, by the U.S. Army Corps of Engineers, Charleston District Office, for the accuracy, completeness, or reliability of the data, charts, or information. You are encouraged to use all prudent safety measures.

Production Notes:  
1. This chart is produced primarily from the following sources:  
2. Hydrographic data from the Ashley River channel survey, dated 2017.  
3. Soundings are in feet and tenths.  
4. ALL depths are subject to change.  
5. The datum is Mean Lower Low Water (MLLW).  
6. Chart datum is 15.55 feet.  
7. Vertical datum is 15.55 feet.  
8. Horizontal datum is NAD 83.



Legend

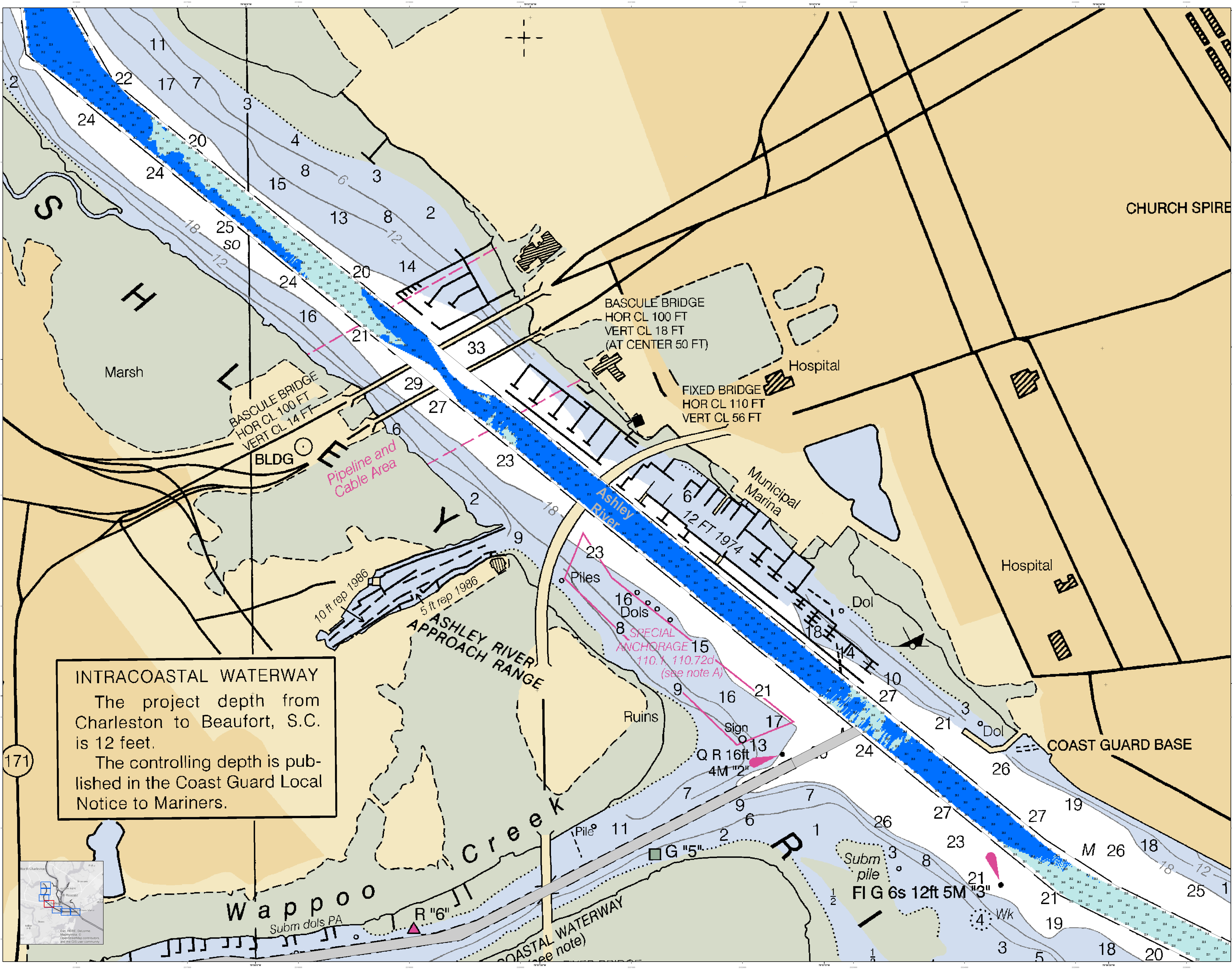
Soundings: 1 to 10, 11 to 20, 21 to 30, 31 to 40, 41 to 50, 51 to 60, 61 to 70, 71 to 80, 81 to 90, 91 to 100

Useful Notes:  
1. Soundings are in feet and tenths.  
2. All depths are subject to change.  
3. The datum is Mean Lower Low Water (MLLW).  
4. Chart datum is 15.55 feet.  
5. Vertical datum is 15.55 feet.  
6. Horizontal datum is NAD 83.

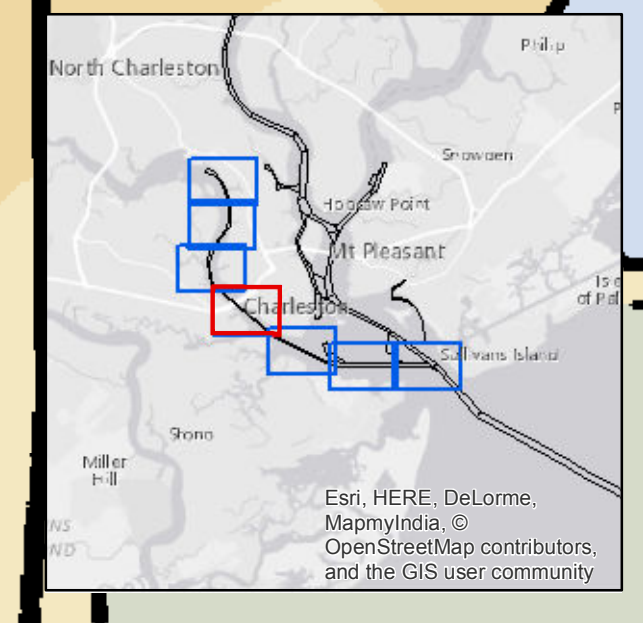
Designed By:	Hydro Software v3.82	Survey Date:	21 MAR 2017
Reviewed By:	1:50,000	Project Reference Number:	PC002 ID
Scale:	1 inch = 250 feet	Scale:	CONDITION
Projection:	NAD 1983 StatePlane South Carolina FIPS 3900 Feet		

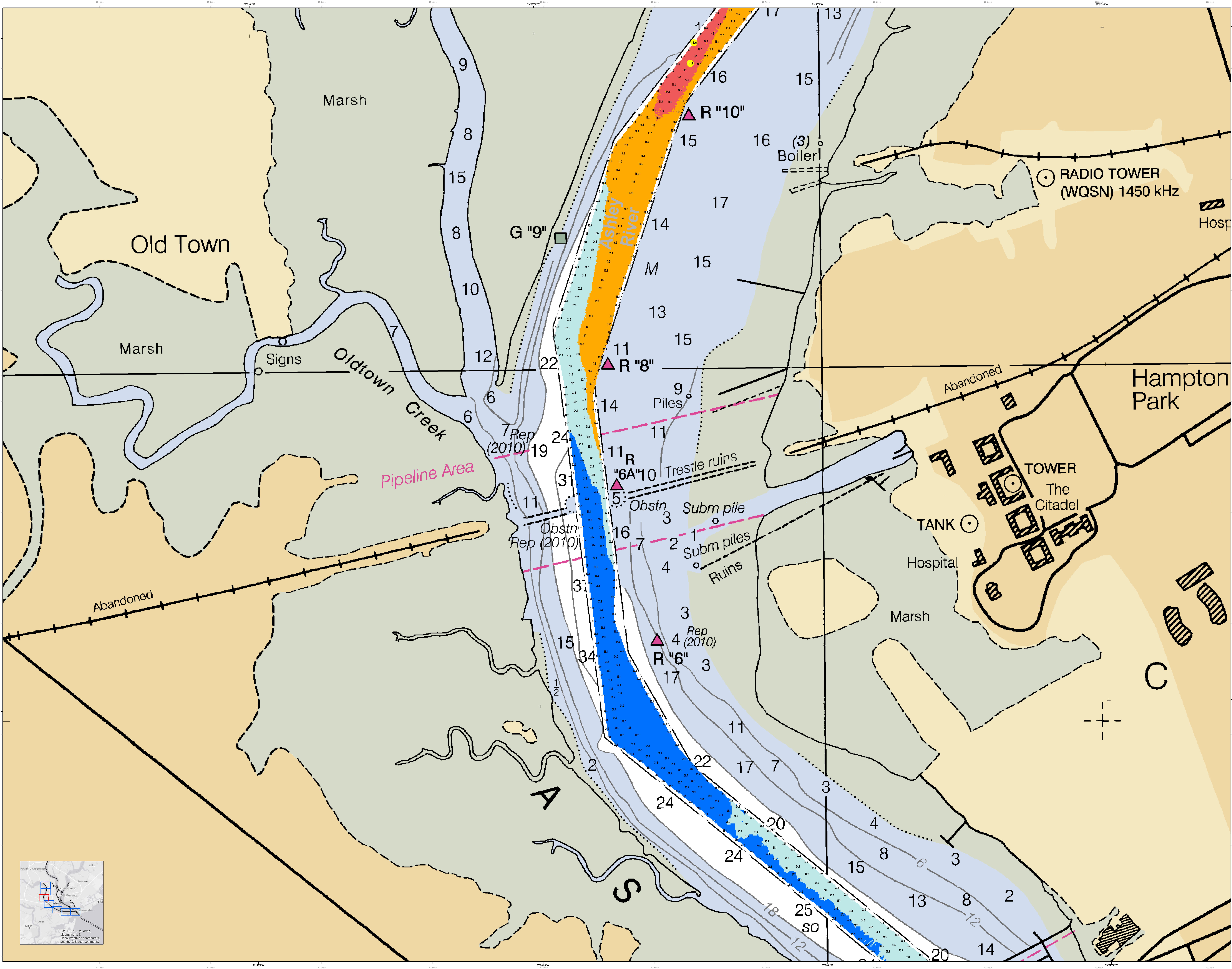
**Ashley River Channel Condition**  
Channel soundings based on single and/or multibeam surveys conducted by the U.S. Army Corps of Engineers. The Ashley River channel condition survey data in the overlapping soundings area is the most current data available. This chart is the result of the overlap of the Ashley River channel condition survey data in the overlapping soundings area.

Concluded on: 21 MAR 2017  
Charleston, South Carolina

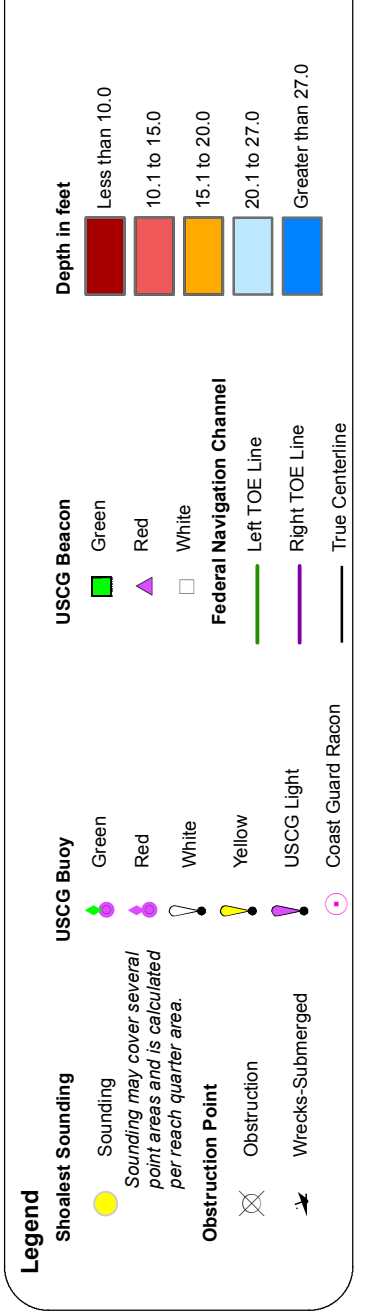
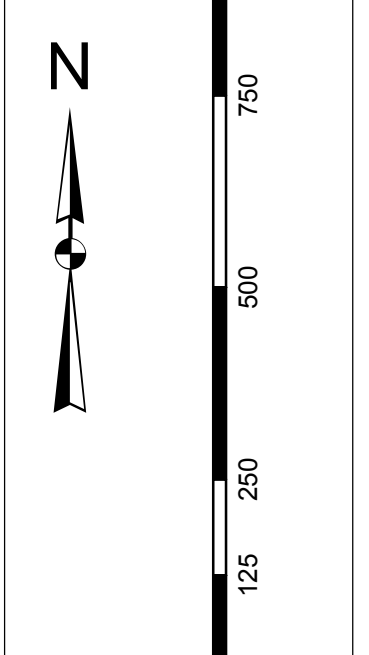


**INTRACOASTAL WATERWAY**  
The project depth from Charleston to Beaufort, S.C. is 12 feet.  
The controlling depth is published in the Coast Guard Local Notice to Mariners.



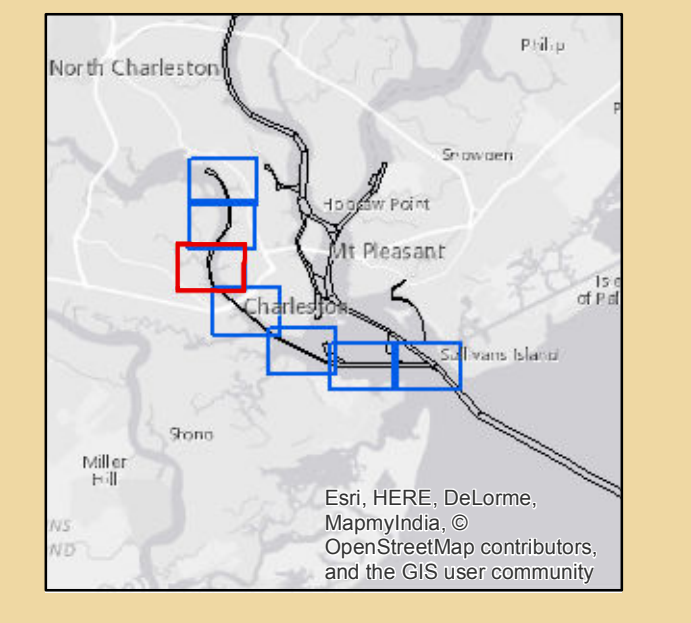


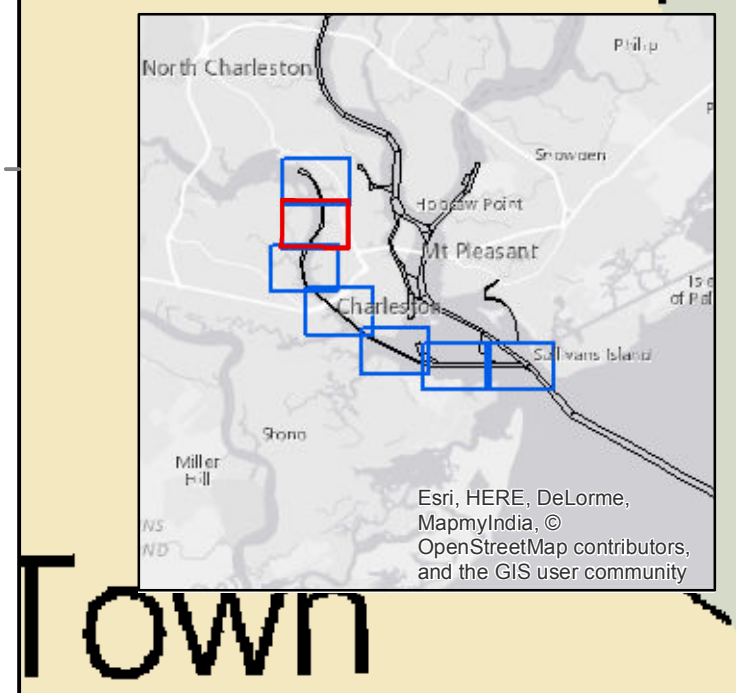
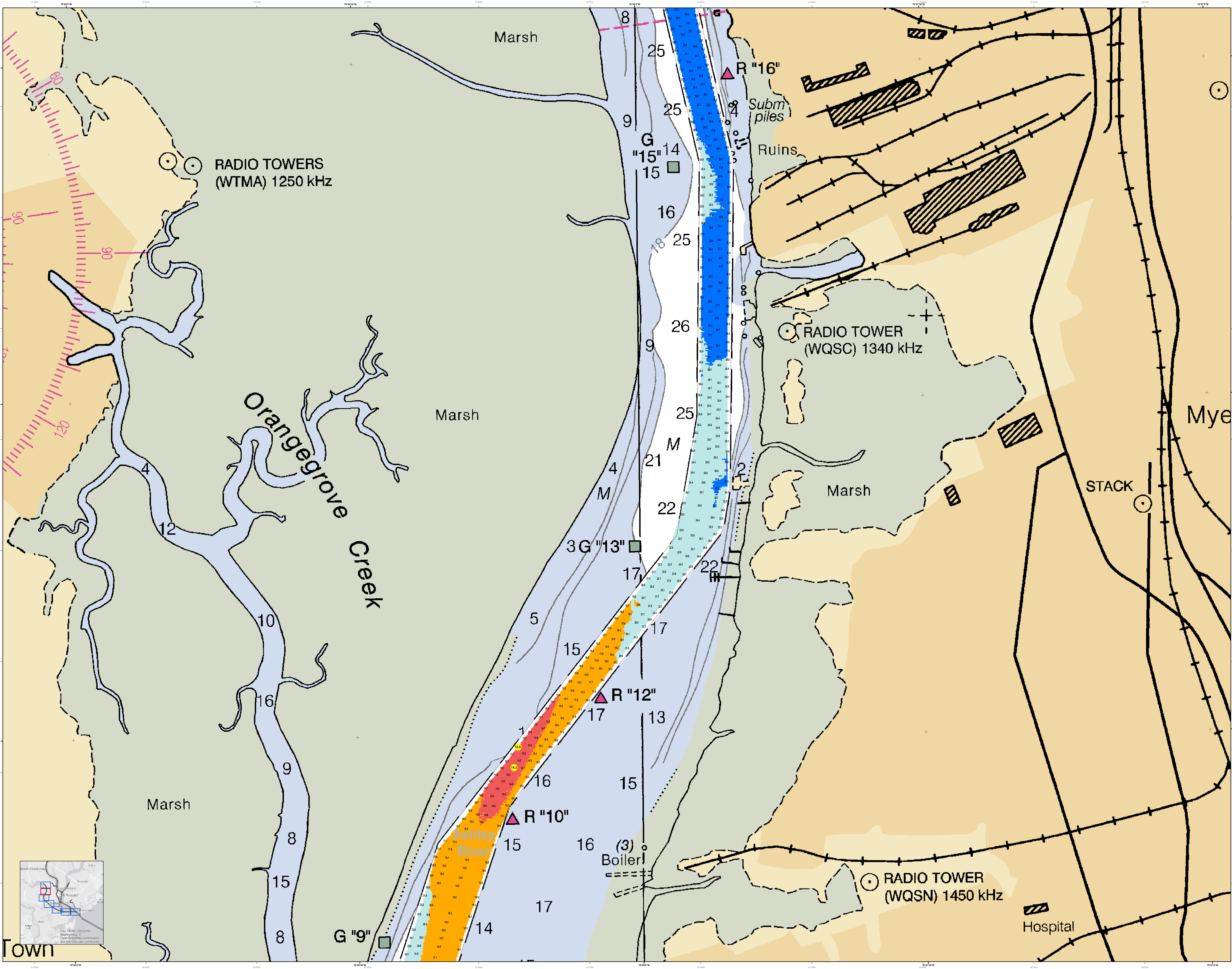
In the event that the U.S. Army Corps of Engineers, Charleston District Office, Spatial Data Branch is unable to locate, or unable to verify, the accuracy of the data shown on this chart, it is the user's responsibility to verify the data. The chart is not to be used for navigation purposes. These data were derived from the following sources:  
1. Hydrographic Survey data from the Ashley River and Oldtown Creek channels.  
2. Survey data from the Ashley River and Oldtown Creek channels.  
3. Survey data from the Ashley River and Oldtown Creek channels.  
4. Survey data from the Ashley River and Oldtown Creek channels.  
5. Survey data from the Ashley River and Oldtown Creek channels.  
6. Survey data from the Ashley River and Oldtown Creek channels.  
7. Survey data from the Ashley River and Oldtown Creek channels.  
8. Survey data from the Ashley River and Oldtown Creek channels.  
9. Survey data from the Ashley River and Oldtown Creek channels.  
10. Survey data from the Ashley River and Oldtown Creek channels.  
11. Survey data from the Ashley River and Oldtown Creek channels.  
12. Survey data from the Ashley River and Oldtown Creek channels.  
13. Survey data from the Ashley River and Oldtown Creek channels.  
14. Survey data from the Ashley River and Oldtown Creek channels.  
15. Survey data from the Ashley River and Oldtown Creek channels.  
16. Survey data from the Ashley River and Oldtown Creek channels.  
17. Survey data from the Ashley River and Oldtown Creek channels.  
18. Survey data from the Ashley River and Oldtown Creek channels.  
19. Survey data from the Ashley River and Oldtown Creek channels.  
20. Survey data from the Ashley River and Oldtown Creek channels.  
21. Survey data from the Ashley River and Oldtown Creek channels.  
22. Survey data from the Ashley River and Oldtown Creek channels.  
23. Survey data from the Ashley River and Oldtown Creek channels.  
24. Survey data from the Ashley River and Oldtown Creek channels.  
25. Survey data from the Ashley River and Oldtown Creek channels.  
26. Survey data from the Ashley River and Oldtown Creek channels.  
27. Survey data from the Ashley River and Oldtown Creek channels.  
28. Survey data from the Ashley River and Oldtown Creek channels.  
29. Survey data from the Ashley River and Oldtown Creek channels.  
30. Survey data from the Ashley River and Oldtown Creek channels.  
31. Survey data from the Ashley River and Oldtown Creek channels.  
32. Survey data from the Ashley River and Oldtown Creek channels.  
33. Survey data from the Ashley River and Oldtown Creek channels.  
34. Survey data from the Ashley River and Oldtown Creek channels.  
35. Survey data from the Ashley River and Oldtown Creek channels.  
36. Survey data from the Ashley River and Oldtown Creek channels.  
37. Survey data from the Ashley River and Oldtown Creek channels.  
38. Survey data from the Ashley River and Oldtown Creek channels.  
39. Survey data from the Ashley River and Oldtown Creek channels.  
40. Survey data from the Ashley River and Oldtown Creek channels.  
41. Survey data from the Ashley River and Oldtown Creek channels.  
42. Survey data from the Ashley River and Oldtown Creek channels.  
43. Survey data from the Ashley River and Oldtown Creek channels.  
44. Survey data from the Ashley River and Oldtown Creek channels.  
45. Survey data from the Ashley River and Oldtown Creek channels.  
46. Survey data from the Ashley River and Oldtown Creek channels.  
47. Survey data from the Ashley River and Oldtown Creek channels.  
48. Survey data from the Ashley River and Oldtown Creek channels.  
49. Survey data from the Ashley River and Oldtown Creek channels.  
50. Survey data from the Ashley River and Oldtown Creek channels.  
51. Survey data from the Ashley River and Oldtown Creek channels.  
52. Survey data from the Ashley River and Oldtown Creek channels.  
53. Survey data from the Ashley River and Oldtown Creek channels.  
54. Survey data from the Ashley River and Oldtown Creek channels.  
55. Survey data from the Ashley River and Oldtown Creek channels.  
56. Survey data from the Ashley River and Oldtown Creek channels.  
57. Survey data from the Ashley River and Oldtown Creek channels.  
58. Survey data from the Ashley River and Oldtown Creek channels.  
59. Survey data from the Ashley River and Oldtown Creek channels.  
60. Survey data from the Ashley River and Oldtown Creek channels.  
61. Survey data from the Ashley River and Oldtown Creek channels.  
62. Survey data from the Ashley River and Oldtown Creek channels.  
63. Survey data from the Ashley River and Oldtown Creek channels.  
64. Survey data from the Ashley River and Oldtown Creek channels.  
65. Survey data from the Ashley River and Oldtown Creek channels.  
66. Survey data from the Ashley River and Oldtown Creek channels.  
67. Survey data from the Ashley River and Oldtown Creek channels.  
68. Survey data from the Ashley River and Oldtown Creek channels.  
69. Survey data from the Ashley River and Oldtown Creek channels.  
70. Survey data from the Ashley River and Oldtown Creek channels.  
71. Survey data from the Ashley River and Oldtown Creek channels.  
72. Survey data from the Ashley River and Oldtown Creek channels.  
73. Survey data from the Ashley River and Oldtown Creek channels.  
74. Survey data from the Ashley River and Oldtown Creek channels.  
75. Survey data from the Ashley River and Oldtown Creek channels.  
76. Survey data from the Ashley River and Oldtown Creek channels.  
77. Survey data from the Ashley River and Oldtown Creek channels.  
78. Survey data from the Ashley River and Oldtown Creek channels.  
79. Survey data from the Ashley River and Oldtown Creek channels.  
80. Survey data from the Ashley River and Oldtown Creek channels.  
81. Survey data from the Ashley River and Oldtown Creek channels.  
82. Survey data from the Ashley River and Oldtown Creek channels.  
83. Survey data from the Ashley River and Oldtown Creek channels.  
84. Survey data from the Ashley River and Oldtown Creek channels.  
85. Survey data from the Ashley River and Oldtown Creek channels.  
86. Survey data from the Ashley River and Oldtown Creek channels.  
87. Survey data from the Ashley River and Oldtown Creek channels.  
88. Survey data from the Ashley River and Oldtown Creek channels.  
89. Survey data from the Ashley River and Oldtown Creek channels.  
90. Survey data from the Ashley River and Oldtown Creek channels.  
91. Survey data from the Ashley River and Oldtown Creek channels.  
92. Survey data from the Ashley River and Oldtown Creek channels.  
93. Survey data from the Ashley River and Oldtown Creek channels.  
94. Survey data from the Ashley River and Oldtown Creek channels.  
95. Survey data from the Ashley River and Oldtown Creek channels.  
96. Survey data from the Ashley River and Oldtown Creek channels.  
97. Survey data from the Ashley River and Oldtown Creek channels.  
98. Survey data from the Ashley River and Oldtown Creek channels.  
99. Survey data from the Ashley River and Oldtown Creek channels.  
100. Survey data from the Ashley River and Oldtown Creek channels.



U.S. Army Corps of Engineers Charleston District Spatial Data Branch Charleston, SC 29405 CESAC-GIS@USACE.ARMY.MIL	Designed By: jehydro Reviewed By: jehydro Scale: 1:50,000 Projection: NAD 1983 StatePlane South Carolina FIPS 3900 Feet	Survey Date: 21 MAR 2017 Project Reference Number: P170300 Scale: 1:50,000 Projection: NAD 1983 StatePlane South Carolina FIPS 3900 Feet	Production Date: 1 NOV 2017 Project Reference Number: P170300 Scale: 1:50,000 Projection: NAD 1983 StatePlane South Carolina FIPS 3900 Feet
--	--	---	--

**Ashley River Channel Condition**  
Channel soundings based on single and/or multibeam surveys conducted by the US Army Corps of Engineers. The Ashley River Channel Condition Survey data in the overlapping shaded area on this chart was derived from the overlapping survey data in the overlapping reaches.  
Concluded on: **21 MAR 2017**  
Charleston, South Carolina





**U.S. Army Corps of Engineers**  
Charleston District

**Production Notes:**  
 1. This chart is a production of the U.S. Army Corps of Engineers, Charleston District Office. It is based on the most recent available data.  
 2. This chart is not to be used for navigation purposes.  
 3. This chart is not to be used for navigation purposes.  
 4. This chart is not to be used for navigation purposes.  
 5. This chart is not to be used for navigation purposes.  
 6. This chart is not to be used for navigation purposes.  
 7. This chart is not to be used for navigation purposes.  
 8. This chart is not to be used for navigation purposes.  
 9. This chart is not to be used for navigation purposes.  
 10. This chart is not to be used for navigation purposes.

**Legend:**  
 Soundings: 1, 2, 3, 4, 5, 6, 7, 8, 9, 10, 11, 12, 13, 14, 15, 16, 17, 18, 19, 20, 21, 22, 23, 24, 25, 26  
 Radio Tower (WTMA) 1250 kHz  
 Radio Tower (WQSC) 1340 kHz  
 Radio Tower (WQSN) 1450 kHz  
 Marsh  
 Ruins  
 Subm piles  
 Boiler  
 Hospital  
 Stack  
 Mye  
 Town

**Scale:** 1" = 250 Feet  
 0 125 250 500 750 1000 Feet

**Production Date:** 1 NOV 2017  
**Survey Date:** 21 MAR 2017  
**Project Reference Number:** 13C000  
**Scale:** 1" = 250 Feet  
**Revision:** 1  
**Condition:** CONDITION

**Designed By:** J. H. B. / J. H. B.  
**Reviewed By:** J. H. B. / J. H. B.  
**Checked By:** J. H. B. / J. H. B.  
**Projection:** NAD 1983 StatePlane South Carolina FIPS 3200 Feet

**U.S. Army Corps of Engineers**  
 CHARLESTON DISTRICT  
 CHARLESTON, SOUTH CAROLINA  
 5000 RIVERSIDE BLVD  
 CHARLESTON, SC 29405  
 CESAC-GIS@USACE.ARMY.MIL

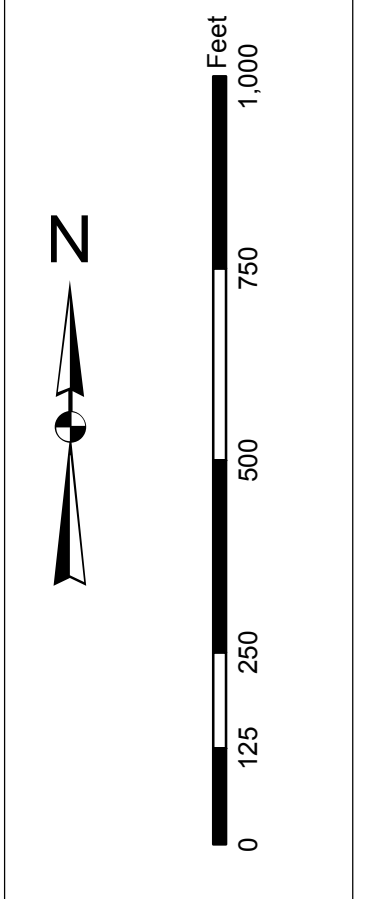
**Ashley River Channel Condition**  
 Channel soundings based on single and/or multibeam surveys conducted by the U.S. Army Corps of Engineers. The Ashley River Channel Condition survey data in the overlapping superimposed survey data in the overlapping reaches.

Concluded on: 21 MAR 2017  
 Charleston, South Carolina

**SHEET REFERENCE NUMBER**  
 C002  
 SHEET 6 OF 7

In the event that the U.S. Army Corps of Engineers, Charleston District Office, Special Data Search is used to locate, identify, and/or retrieve data, the user shall be responsible for obtaining the necessary permissions from the appropriate authority. This data was prepared by the U.S. Army Corps of Engineers, Charleston District Office, and is not to be used for any purpose other than that for which it was prepared. No warranty is made by the U.S. Army Corps of Engineers, Charleston District Office, for the accuracy or completeness of the data. The user shall be responsible for obtaining the necessary permissions from the appropriate authority. No warranty is made by the U.S. Army Corps of Engineers, Charleston District Office, for the accuracy or completeness of the data. The user shall be responsible for obtaining the necessary permissions from the appropriate authority.

Production Notes:  
1. This data was prepared by the U.S. Army Corps of Engineers, Charleston District Office, and is not to be used for any purpose other than that for which it was prepared.  
2. No warranty is made by the U.S. Army Corps of Engineers, Charleston District Office, for the accuracy or completeness of the data.  
3. The user shall be responsible for obtaining the necessary permissions from the appropriate authority.



**Legend**

**Channel Scouring**  
 - 10 ft or more  
 - 5 to 10 ft  
 - 2 to 5 ft  
 - 1 to 2 ft  
 - 0 to 1 ft

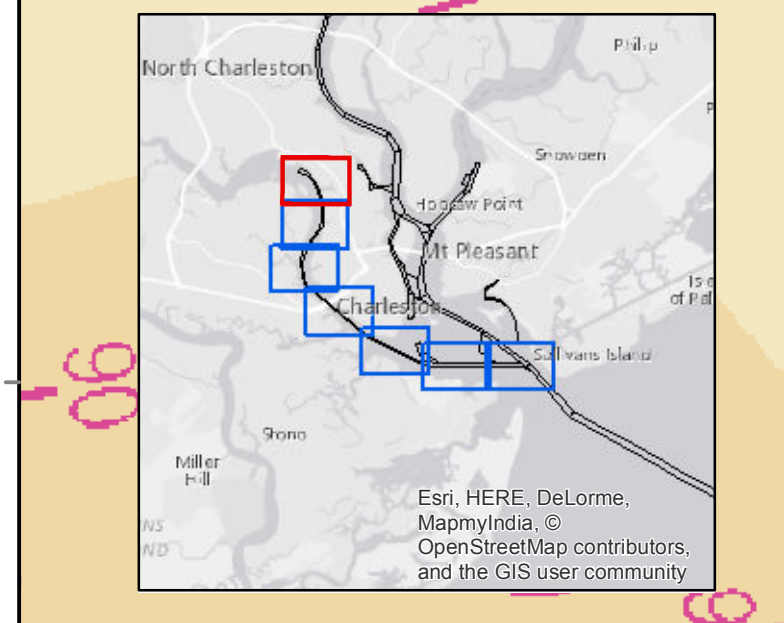
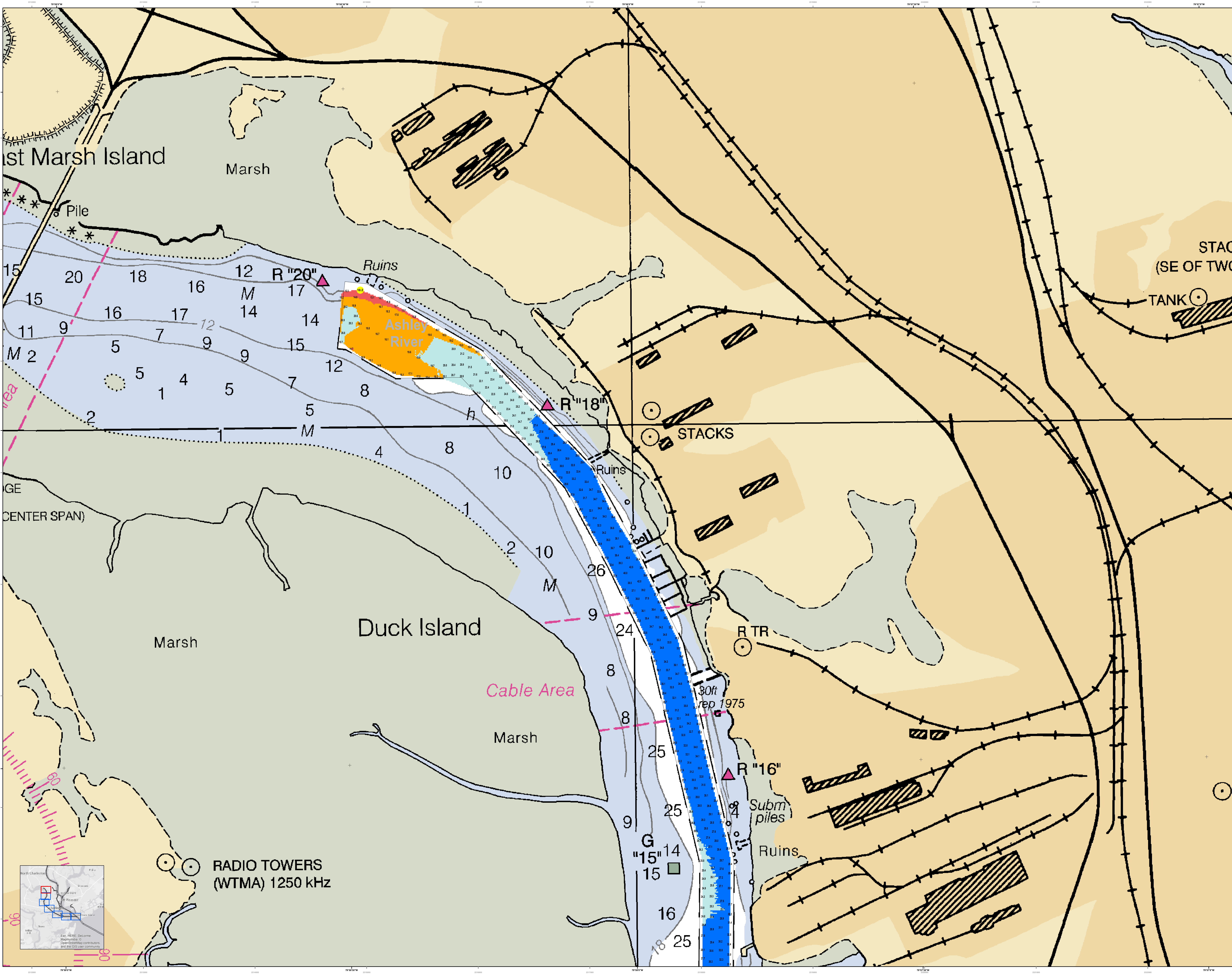
**Used Features**  
 - Bank  
 - Dike  
 - Federal Navigable Channel  
 - Light  
 - Obstruction  
 - Pier  
 - Quay  
 - Shoal  
 - Structure  
 - Tidal Gate  
 - Tidal Lock  
 - Tidal Weir  
 - Trench  
 - Well  
 - Wharf  
 - Other

**Used Lines**  
 - Center Line  
 - Edge of Channel  
 - Edge of Shoal  
 - Edge of Bank  
 - Edge of Dike  
 - Edge of Pier  
 - Edge of Quay  
 - Edge of Structure  
 - Edge of Tidal Gate  
 - Edge of Tidal Lock  
 - Edge of Tidal Weir  
 - Edge of Trench  
 - Edge of Well  
 - Edge of Wharf  
 - Edge of Other

**Used Symbols**  
 - Light  
 - Obstruction  
 - Pier  
 - Quay  
 - Structure  
 - Tidal Gate  
 - Tidal Lock  
 - Tidal Weir  
 - Trench  
 - Well  
 - Wharf  
 - Other

Designed By:	U.S. Army Corps of Engineers	Survey Date:	21 MAR 2017
Reviewed By:	U.S. Army Corps of Engineers	Production Date:	1 NOV 2017
Revised By:	U.S. Army Corps of Engineers	Project Reference Number:	PC0001D
Revised Date:	U.S. Army Corps of Engineers	Survey Type:	CONDITION
Revised Scale:	U.S. Army Corps of Engineers	Scale:	1 inch = 250 feet
Revised Projection:	U.S. Army Corps of Engineers	Projection:	NAD 1983 StatePlane South Carolina FIPS 3200 Feet

**Ashley River Channel Condition**  
 Channel soundings based on single and/or multibeam surveys conducted by the U.S. Army Corps of Engineers. The Ashley River Channel Condition survey data in the overlapping superimposed survey data in the overlapping reaches.  
 Concluded on: 21 MAR 2017  
 Charleston, South Carolina



RADIO TOWERS (WTMA) 1250 kHz