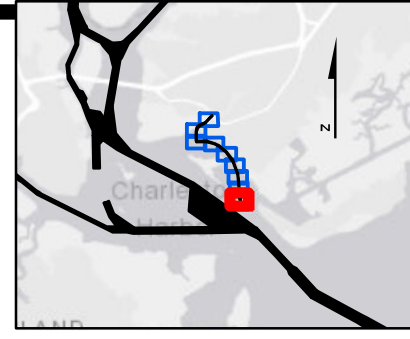


342000

342000

32°46'00"N

32°46'00"N



79°52'30"W  
 2346000  
 2347000

**Shem Creek**  
 The information depicted on this map represents the results of surveys made on the dates indicated and can only be considered as indicating the general conditions existing at that time.  
 Concluded on: **02 FEB 2018**  
 Mount Pleasant, South Carolina

U.S. ARMY ENGINEER DISTRICT CORPS OF ENGINEERS CHARLESTON, SOUTH CAROLINA	Designed By: <b>eHydro Software v3.82</b>	Survey Date: <b>02 FEB 2018</b>	Production Date: <b>12 FEB 2018</b>
SPATIAL DATA BRANCH 69A HAGOOD AVE. CHARLESTON, SC 29403 CESAC-GIS@USACE.ARMY.MIL	Reviewed By: <b>CCW</b>	Absolute Scale: <b>1:1,800</b>	Project Reference Number: <b>CESAC-PRA-0002</b>
	Reference Scale: <b>1 inch = 150 feet</b>	Survey Type: <b>CONDITION</b>	
	Projection: <b>NAD 1983 StatePlane South Carolina FIPS 3900 Feet</b>		

**Shoalest Sounding**  
 ● Sounding  
 Sounding may cover several point areas and is calculated per reach quarter area  
 \*+ indicates sounding above MLLW

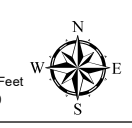
**USCG Beacon**  
 ● Green  
 ▲ Red  
 □ White

**USCG Buoy**  
 ● Green  
 ● Red  
 ● Coast Guard Racon

○ White  
 ● Yellow  
 ● USCG Light

**Depth in feet**  
 0-3  
 3 to 6  
 6 to 9  
 9 to 12  
 Greater Than 12

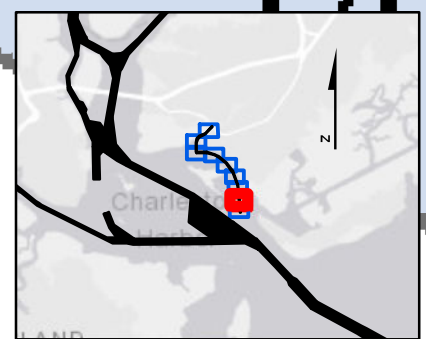
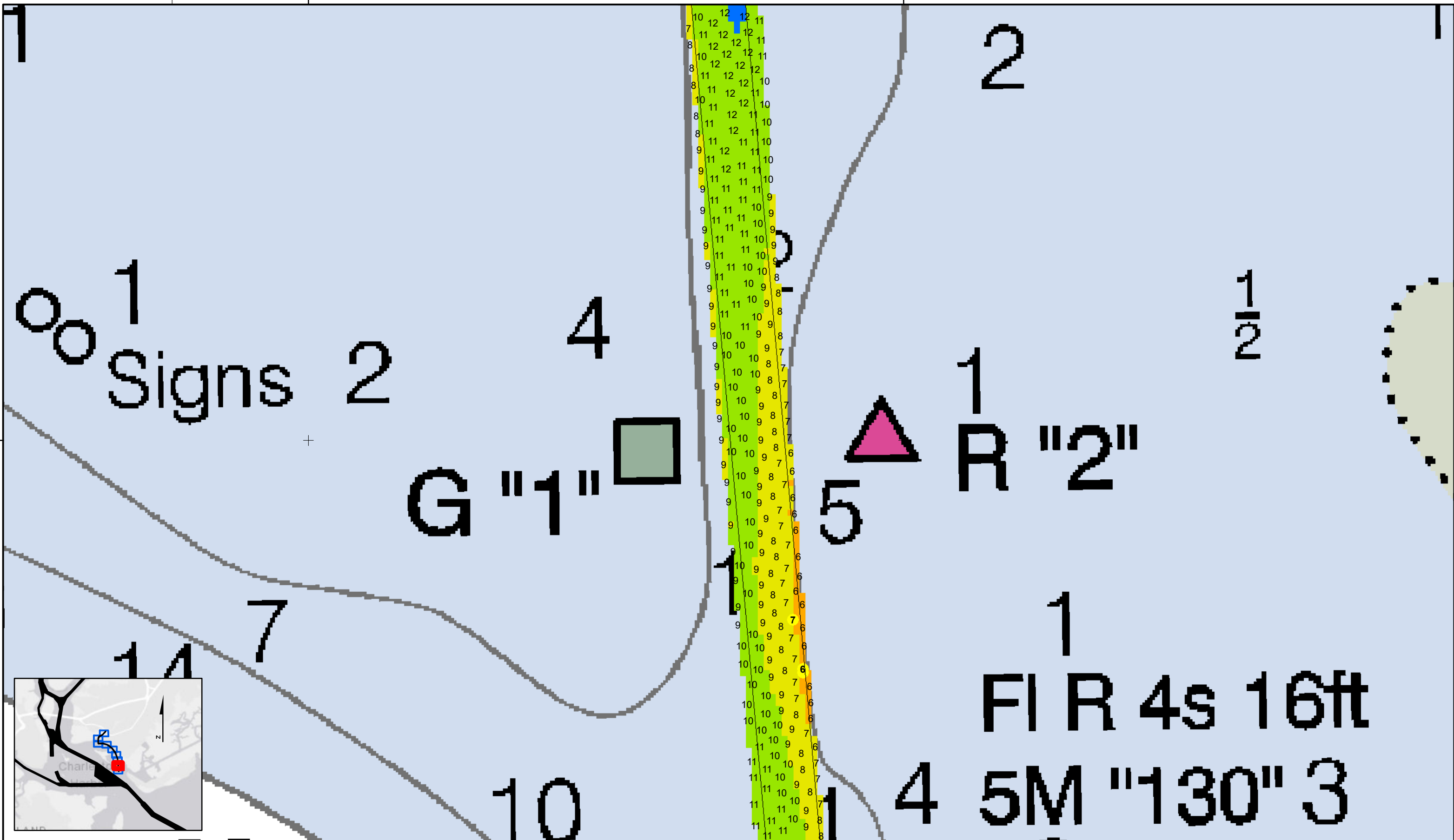
0 250 500 Feet



**Production Notes:**  
 1. The information depicted on this product is for plotting purposes only  
 2. Vector hydrographic data derived from surveys conducted by the USACE and approved partners  
 3. Soundings are in feet and refer to Mean Lower Low Water (MLLW)  
 4. Raster Background: PanSharpened Worldview-2 imagery dated 2014

In no event shall the U.S. Army Corps of Engineers, Charleston District Office, Spatial Data Branch be liable for direct, indirect, incidental, consequential or special damages of any kind, including, but not limited to, loss of anticipated profits or benefits arising out of use of or reliance on the data.  
 These data sets have been developed from the best available sources. Although efforts have been made to ensure that the datasets are accurate and reliable, errors and variable conditions originating from physical sources used to develop the data may be reflected in the data supplied.  
 This product is not intended to be used for navigation.  
 Mariners are encouraged to use all prudent safety measures.





SHEET REFERENCE NUMBER <b>C002</b> Page 2 of 9	<b>Shem Creek</b> The information depicted on this map represents the results of surveys made on the dates indicated and can only be considered as indicating the general conditions existing at that time. Concluded on: <b>02 FEB 2018</b> Mount Pleasant, South Carolina		Designed By: <b>eHydro Software v3.82</b>	Survey Date: <b>02 FEB 2018</b>	Production Date: <b>12 FEB 2018</b>	
	U.S. ARMY ENGINEER DISTRICT CORPS OF ENGINEERS CHARLESTON, SOUTH CAROLINA		Reviewed By: <b>CCW</b>	Absolute Scale: <b>1:1,800</b>	Project Reference Number: <b>CESAC-PRA-0002</b>	
	SPATIAL DATA BRANCH 69A HAGOOD AVE. CHARLESTON, SC 29403		Reference Scale: <b>1 inch = 150 feet</b>	Survey Type: <b>CONDITION</b>		
	Projection: <b>NAD 1983 StatePlane South Carolina FIPS 3900 Feet</b>					

<b>Shoalest Sounding</b> Sounding <i>Sounding may cover several point areas and is calculated per reach quarter area</i> <i>*+ indicates sounding above MLLW</i>	<b>USCG Beacon</b> Green Red White	<b>USCG Buoy</b> Green Red Coast Guard Racon	White Yellow USCG Light	<b>Depth in feet</b> 0-3 3 to 6 6 to 9 9 to 12 Greater Than 12
---	---	---	-------------------------------	---

**Production Notes:**

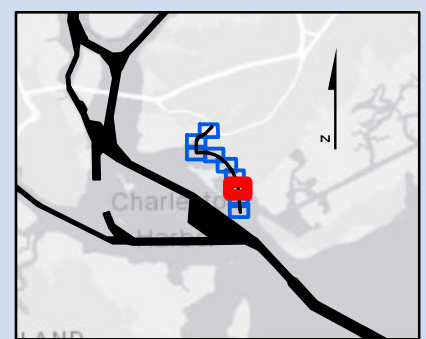
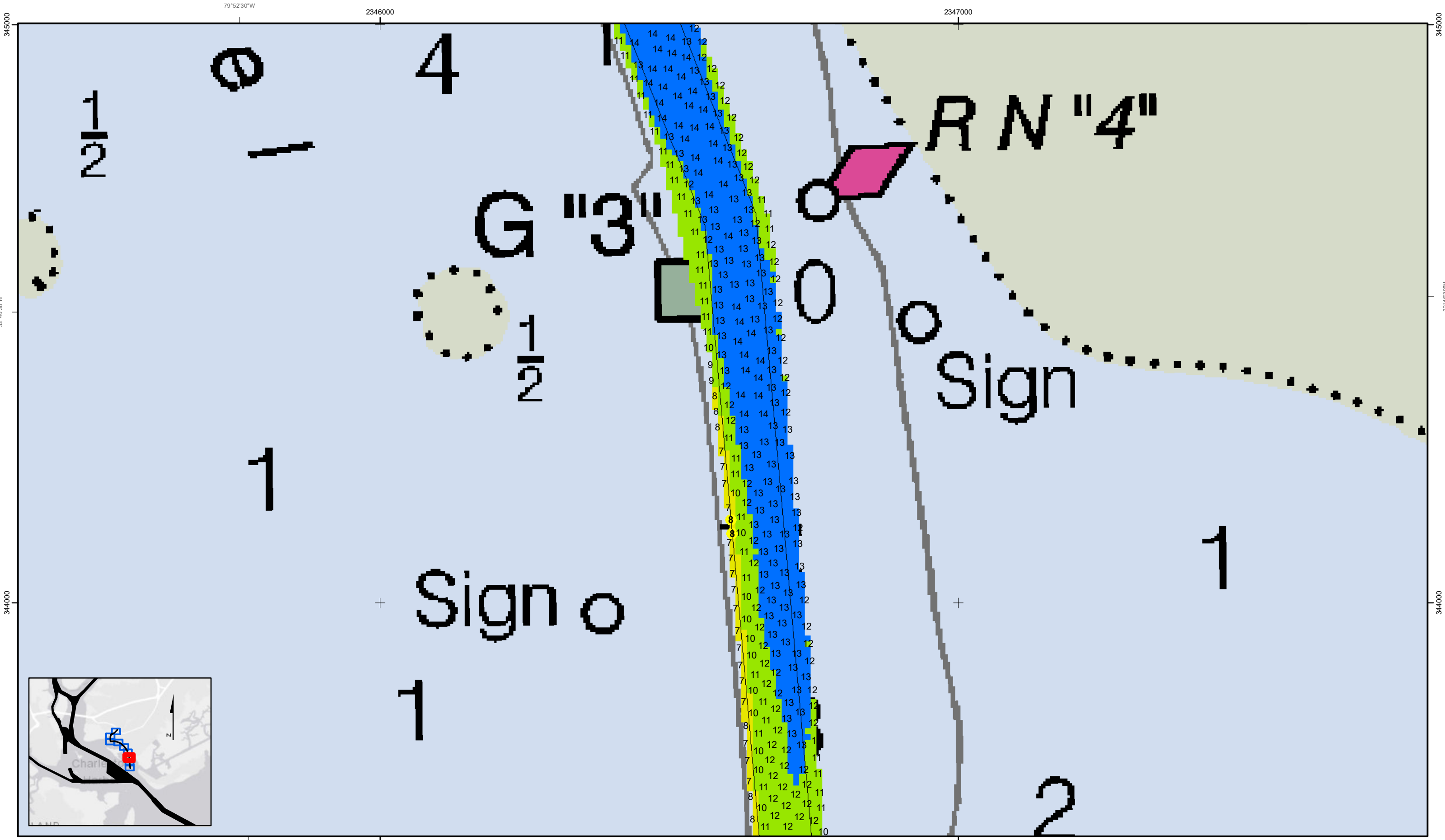
- The information depicted on this product is for plotting purposes only.
- Vector hydrographic data derived from surveys conducted by the USACE and approved partners.
- Soundings are in feet and refer to Mean Lower Low Water (MLLW).
- Raster Background: PanSharpened Worldview-2 imagery dated 2014.

In no event shall the U.S. Army Corps of Engineers, Charleston District Office, Spatial Data Branch be liable for direct, indirect, incidental, consequential or special damages of any kind, including, but not limited to, loss of anticipated profits or benefits arising out of use of or reliance on the data.

These data sets have been developed from the best available sources. Although efforts have been made to ensure that the database are accurate and reliable, errors and variable conditions originating from physical sources used to develop the data may be reflected in the data supplied.

This product is not intended to be used for navigation. Mariners are encouraged to use all prudent safety measures.





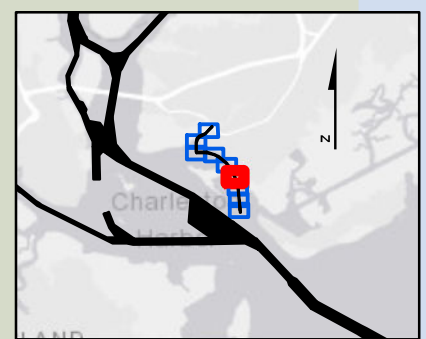
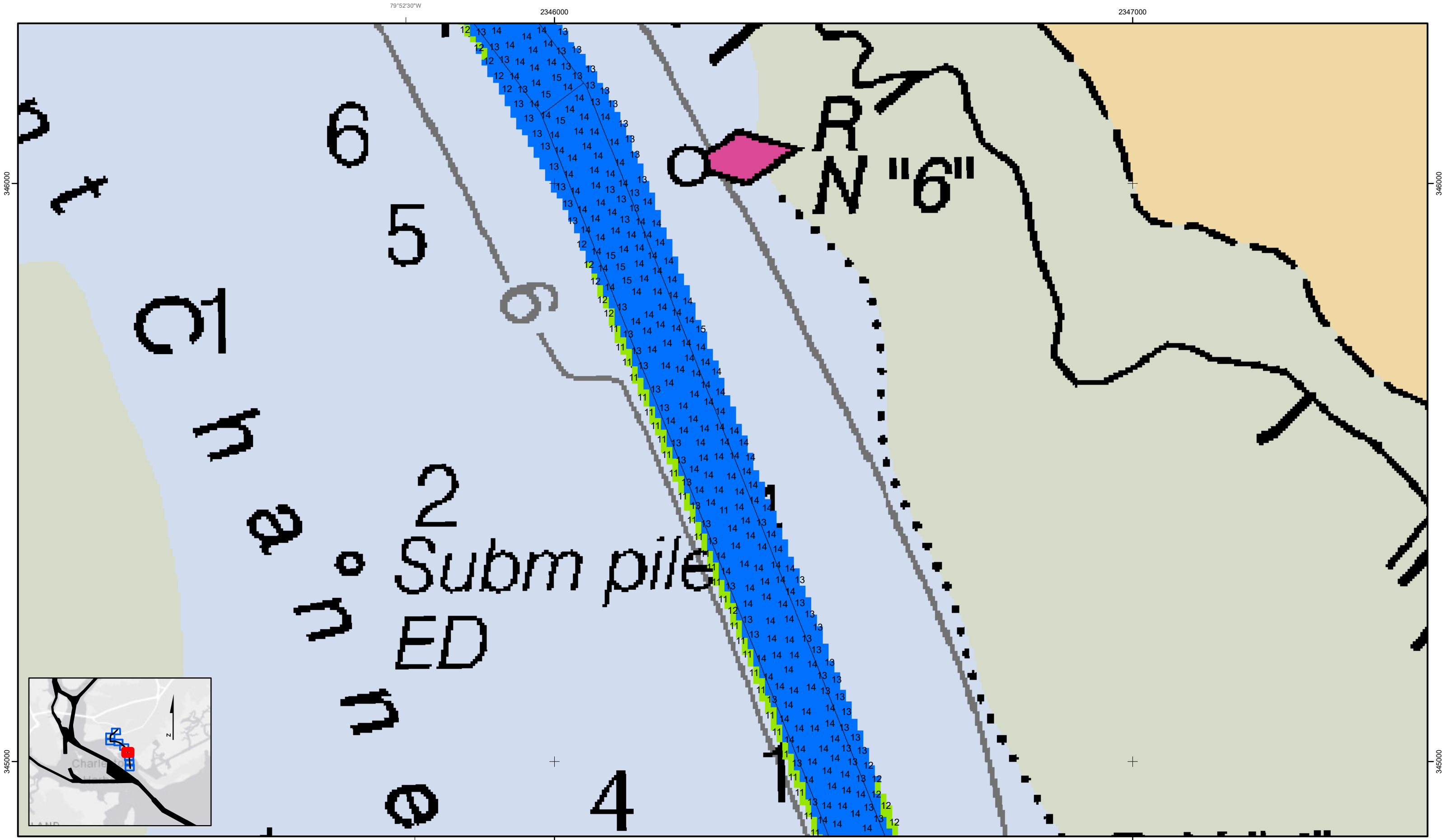
SHEET REFERENCE NUMBER <b>C002</b> Page 3 of 9	<b>Shem Creek</b> The information depicted on this map represents the results of surveys made on the dates indicated and can only be considered as indicating the general conditions existing at that time. Concluded on: <b>02 FEB 2018</b> Mount Pleasant, South Carolina	U.S. ARMY ENGINEER DISTRICT CORPS OF ENGINEERS CHARLESTON, SOUTH CAROLINA  SPATIAL DATA BRANCH 69A HAGOOD AVE CHARLESTON, SC 29403 CESAC-GIS@USACE.ARMY.MIL	Designed By: <b>eHydro Software v3.82</b> Reviewed By: <b>CCW</b> Reference Scale: <b>1 inch = 150 feet</b> Projection: <b>NAD 1983 StatePlane South Carolina FIPS 3900 Feet</b>	Survey Date: <b>02 FEB 2018</b> Project Reference Number: <b>CESAC-PRA-0002</b> Survey Type: <b>CONDITION</b>	Production Date: <b>12 FEB 2018</b>
--	--	--	---	---	-------------------------------------

<b>Shoalest Sounding</b> ● Sounding <i>Sounding may cover several point areas and is calculated per reach quarter area</i> *+ indicates sounding above MLLW	<b>USCG Beacon</b> ● Green ▲ Red □ White	<b>USCG Buoy</b> ● Green ● Red ● Coast Guard Racon	White Yellow USCG Light	<b>Depth in feet</b> 0-3    3 to 6    6 to 9    9 to 12    Greater Than 12
--	---	---	-------------------------------	---

Production Notes:  
 1. The information depicted on this product is for plotting purposes only.  
 2. Vector hydrographic data derived from surveys conducted by the USACE and approved partners.  
 3. Soundings are in feet and refer to Mean Lower Low Water (MLLW).  
 4. Raster Background: Panharpened Worldview-2 imagery dated 2014.

In no event shall the U.S. Army Corps of Engineers, Charleston District Office, Spatial Data Branch be liable for direct, indirect, incidental, consequential or special damages of any kind, including, but not limited to, loss of anticipated profits or benefits arising out of use of or reliance on the data.  
 These data sets have been developed from the best available sources. Although efforts have been made to ensure that the datasets are accurate and reliable, errors and variable conditions originating from physical sources used to develop the data may be reflected in the data supplied.  
**This product is not intended to be used for navigation.**  
 Mariners are encouraged to use all prudent safety measures.

U.S. Army Corps of Engineers  
 Charleston District



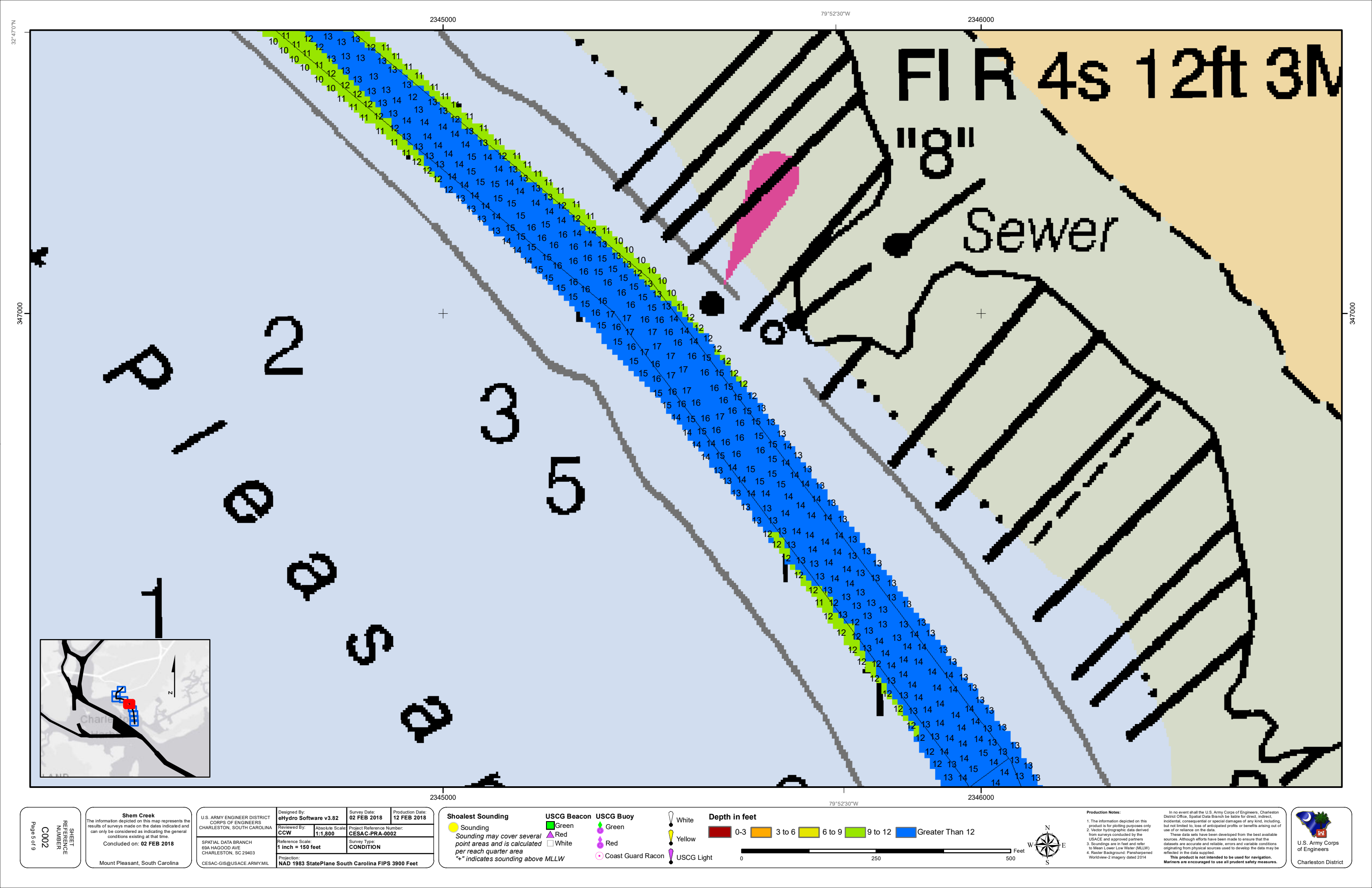
SHEET REFERENCE NUMBER <b>C002</b> Page 4 of 9	<b>Shem Creek</b> The information depicted on this map represents the results of surveys made on the dates indicated and can only be considered as indicating the general conditions existing at that time. Concluded on: <b>02 FEB 2018</b> Mount Pleasant, South Carolina	U.S. ARMY ENGINEER DISTRICT CORPS OF ENGINEERS CHARLESTON, SOUTH CAROLINA  SPATIAL DATA BRANCH 69A HAGOOD AVE. CHARLESTON, SC 29403 CESAC-GIS@USACE.ARMY.MIL	Designed By: <b>eHydro Software v3.82</b> Reviewed By: <b>CCW</b> Reference Scale: <b>1 inch = 150 feet</b> Projection: <b>NAD 1983 StatePlane South Carolina FIPS 3900 Feet</b>	Survey Date: <b>02 FEB 2018</b> Production Date: <b>12 FEB 2018</b> Project Reference Number: <b>CESAC-PRA-0002</b> Survey Type: <b>CONDITION</b>
--	--	---	---	--

<b>Shoalest Sounding</b> Sounding <i>Sounding may cover several point areas and is calculated per reach quarter area</i> "+ " indicates sounding above MLLW	<b>USCG Beacon</b> Green Red White	<b>USCG Buoy</b> Green Red Coast Guard Racon	White Yellow USCG Light	<b>Depth in feet</b> 0-3 3 to 6 6 to 9 9 to 12 Greater Than 12
--	---	---	-------------------------------	---

**Production Notes:**  
 1. The information depicted on this product is for plotting purposes only.  
 2. Vector hydrographic data derived from surveys conducted by the USACE and approved partners.  
 3. Soundings are in feet and refer to Mean Lower Low Water (MLLW).  
 4. Raster Background: PanSharpened Worldview-2 imagery dated 2014.

In no event shall the U.S. Army Corps of Engineers, Charleston District Office, Spatial Data Branch be liable for direct, indirect, incidental, consequential or special damages of any kind, including, but not limited to, loss of anticipated profits or benefits arising out of use of or reliance on the data.  
 These data sets have been developed from the best available sources. Although efforts have been made to ensure that the datasets are accurate and reliable, errors and variable conditions originating from physical sources used to develop the data may be reflected in the data supplied.  
**This product is not intended to be used for navigation.**  
**Mariners are encouraged to use all prudent safety measures.**

U.S. Army Corps of Engineers  
 Charleston District

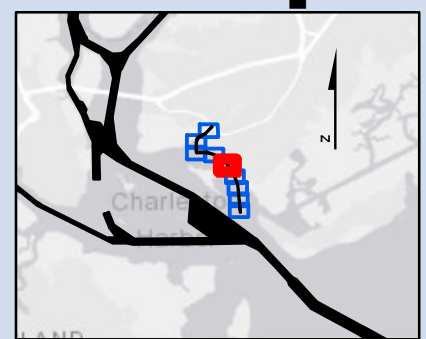


FIR 4s 12ft 3M

"8"

Sewer

1  
2  
3  
4  
5



SHEET REFERENCE NUMBER <b>C002</b> Page 5 of 9	<b>Shem Creek</b> The information depicted on this map represents the results of surveys made on the dates indicated and can only be considered as indicating the general conditions existing at that time. Concluded on: <b>02 FEB 2018</b> Mount Pleasant, South Carolina	U.S. ARMY ENGINEER DISTRICT CORPS OF ENGINEERS CHARLESTON, SOUTH CAROLINA  SPATIAL DATA BRANCH 69A HAGOOD AVE. CHARLESTON, SC 29403 CESAC-GIS@USACE.ARMY.MIL	Designed By: <b>eHydro Software v3.82</b> Reviewed By: <b>CCW</b> Reference Scale: <b>1 inch = 150 feet</b> Projection: <b>NAD 1983 StatePlane South Carolina FIPS 3900 Feet</b>	Survey Date: <b>02 FEB 2018</b> Project Reference Number: <b>CESAC-PRA-0002</b> Survey Type: <b>CONDITION</b>	Production Date: <b>12 FEB 2018</b>
--	--	---	---	--	--

<b>Shoalest Sounding</b> Sounding <i>Sounding may cover several point areas and is calculated per reach quarter area</i> "+ " indicates sounding above MLLW	<b>USCG Beacon</b> Green Red White	<b>USCG Buoy</b> Green Red Coast Guard Racon	White Yellow USCG Light	<b>Depth in feet</b> 0-3 3 to 6 6 to 9 9 to 12 Greater Than 12
--	---	---	-------------------------------	---

**Production Notes:**

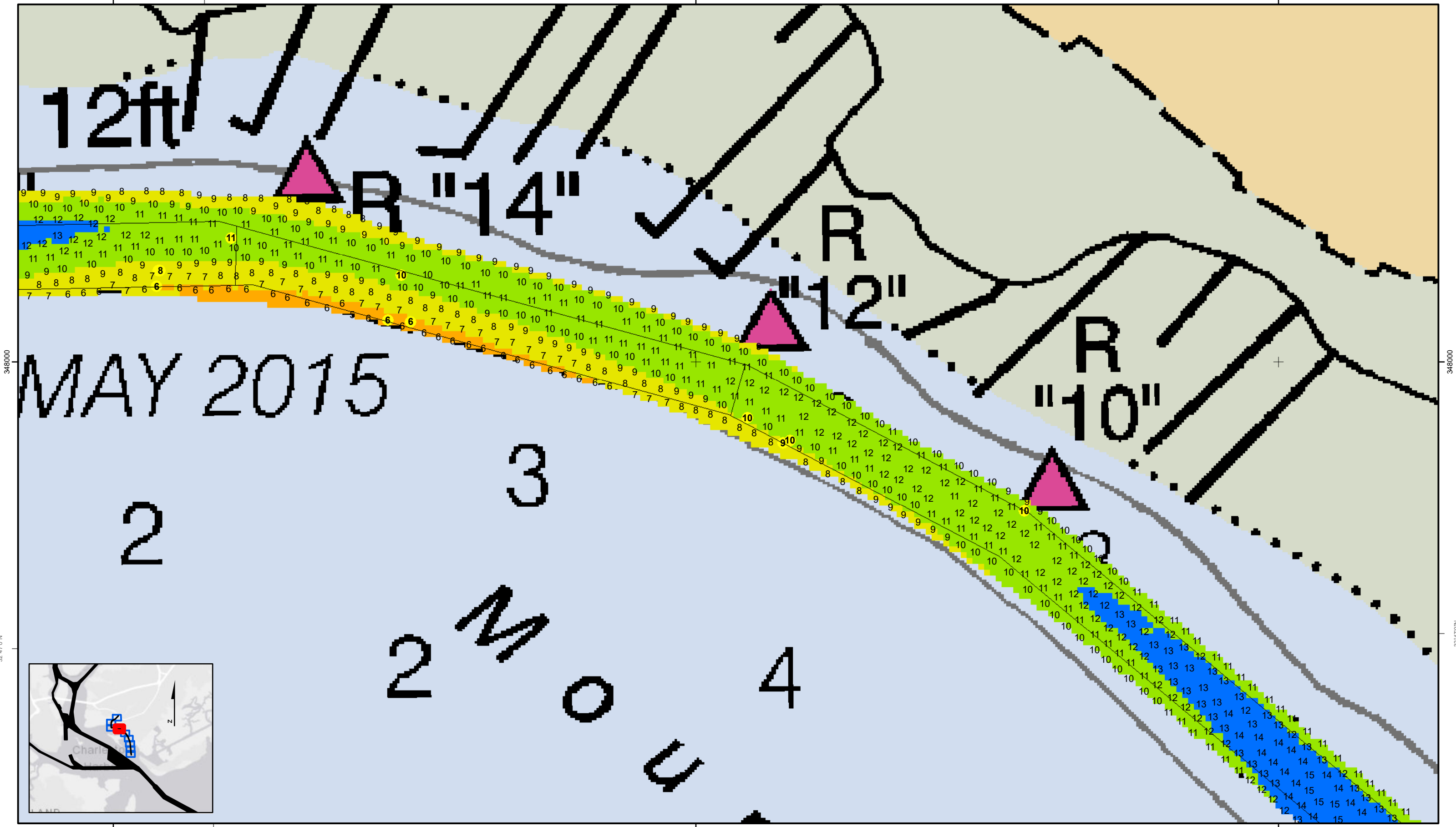
- The information depicted on this product is for plotting purposes only.
- Vector hydrographic data derived from surveys conducted by the USACE and approved partners.
- Soundings are in feet and refer to Mean Lower Low Water (MLLW).
- Raster Background: Panaharpnerd Worldview-2 imagery dated 2014.

In no event shall the U.S. Army Corps of Engineers, Charleston District Office, Spatial Data Branch be liable for direct, indirect, incidental, consequential or special damages of any kind, including, but not limited to, loss of anticipated profits or benefits arising out of use of or reliance on the data.

These data sets have been developed from the best available sources. Although efforts have been made to ensure that the datasets are accurate and reliable, errors and variable conditions originating from physical sources used to develop the data may be reflected in the data supplied.

This product is not intended to be used for navigation. Mariners are encouraged to use all prudent safety measures.

U.S. Army Corps of Engineers  
Charleston District

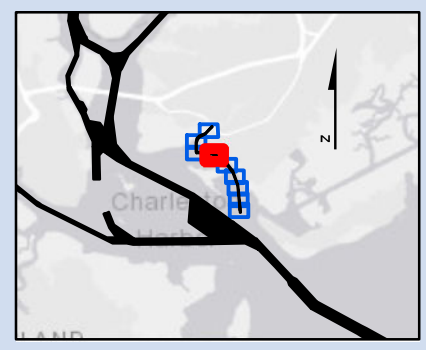


348000

348000

32°47'0"N

32°47'0"N



SHEET REFERENCE NUMBER <b>C002</b> Page 6 of 9	<b>Shem Creek</b> The information depicted on this map represents the results of surveys made on the dates indicated and can only be considered as indicating the general conditions existing at that time. Concluded on: <b>02 FEB 2018</b> Mount Pleasant, South Carolina	U.S. ARMY ENGINEER DISTRICT CORPS OF ENGINEERS CHARLESTON, SOUTH CAROLINA  SPATIAL DATA BRANCH 69A HAGOOD AVE. CHARLESTON, SC 29403 CESAC-GIS@USACE.ARMY.MIL	Designed By: <b>eHydro Software v3.82</b> Reviewed By: <b>CCW</b> Reference Scale: <b>1 inch = 150 feet</b> Projection: <b>NAD 1983 StatePlane South Carolina FIPS 3900 Feet</b>	Survey Date: <b>02 FEB 2018</b> Absolute Scale: <b>1:1,800</b> Survey Type: <b>CONDITION</b>	Production Date: <b>12 FEB 2018</b> Project Reference Number: <b>CESAC-PRA-0002</b>
--	--	---	---	---	--

<b>Shoalest Sounding</b> Sounding <i>Sounding may cover several point areas and is calculated per reach quarter area</i> "+." indicates sounding above MLLW	<b>USCG Beacon</b> Green Red White	<b>USCG Buoy</b> Green Red Coast Guard Racon	White Yellow USCG Light	<b>Depth in feet</b> 0-3 3 to 6 6 to 9 9 to 12 Greater Than 12
--	---	---	-------------------------------	---

**Production Notes:**

- The information depicted on this product is for plotting purposes only.
- Vector hydrographic data derived from surveys conducted by the USACE and approved partners to Mean Lower Low Water (MLLW).
- Soundings are in feet and refer to Mean Lower Low Water (MLLW).
- Raster Background: Panahorpen Worldview-2 imagery dated 2014.

In no event shall the U.S. Army Corps of Engineers, Charleston District Office, Spatial Data Branch be liable for direct, indirect, incidental, consequential or special damages of any kind, including, but not limited to, loss of anticipated profits or benefits arising out of use of or reliance on the data.

These data sets have been developed from the best available sources. Although efforts have been made to ensure that the datasets are accurate and reliable, errors and variable conditions originating from physical sources used to develop the data may be reflected in the data supplied.

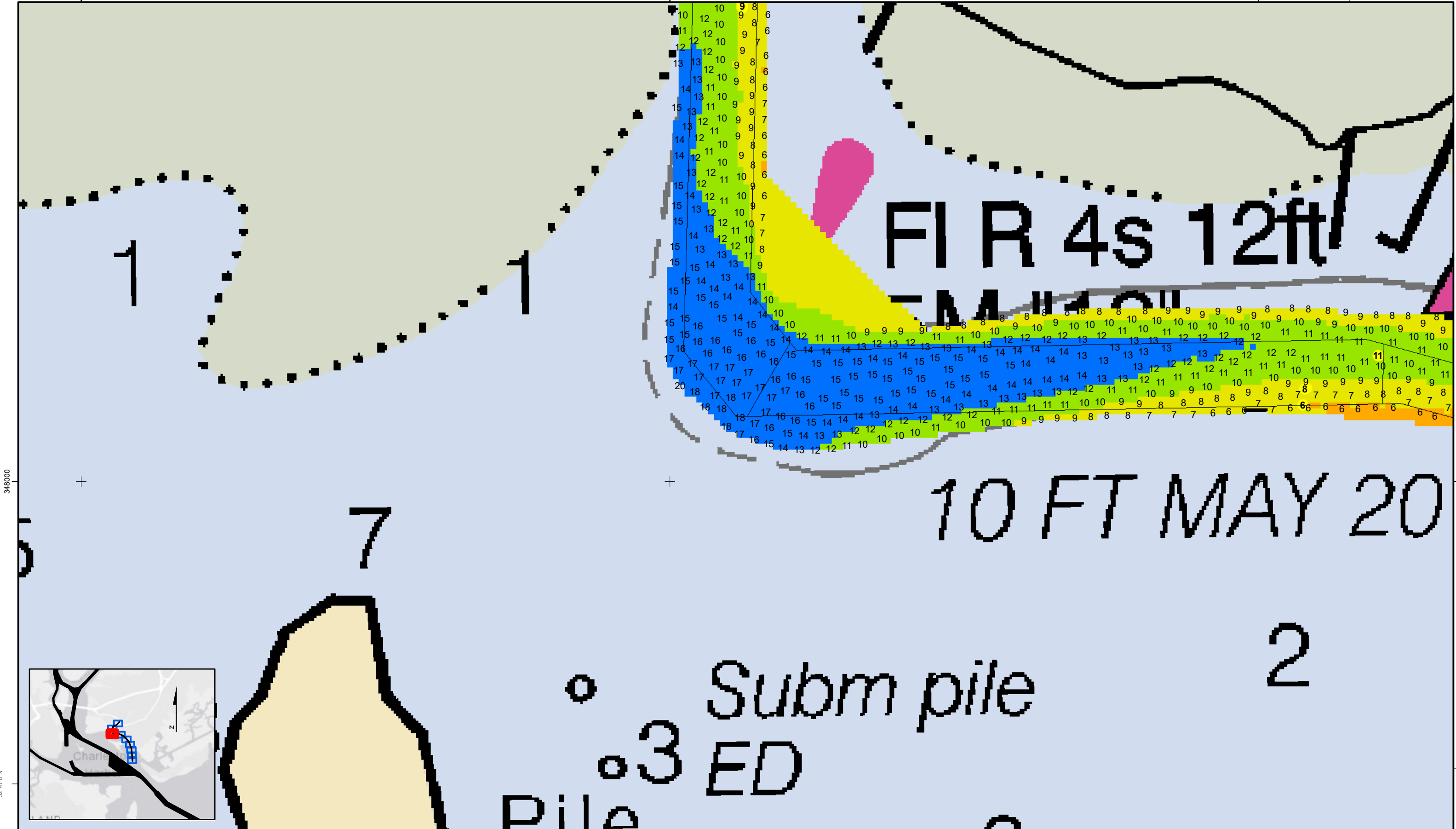
This product is not intended to be used for navigation. Mariners are encouraged to use all prudent safety measures.

2341000

2342000

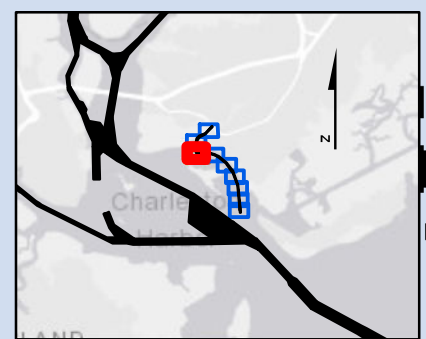
2343000

79°53'0"W



348000

348000



32°47'0"N

32°47'0"N

2341000

2342000

2343000

79°53'0"W

SHEET REFERENCE NUMBER <b>C002</b> Page 7 of 9	<b>Shem Creek</b> The information depicted on this map represents the results of surveys made on the dates indicated and can only be considered as indicating the general conditions existing at that time. Concluded on: <b>02 FEB 2018</b> Mount Pleasant, South Carolina	U.S. ARMY ENGINEER DISTRICT CORPS OF ENGINEERS CHARLESTON, SOUTH CAROLINA  SPATIAL DATA BRANCH 69A HAGOOD AVE. CHARLESTON, SC 29403 CESAC-GIS@USACE.ARMY.MIL	Designed By: <b>eHydro Software v3.82</b> Reviewed By: <b>CCW</b> Reference Scale: <b>1 inch = 150 feet</b> Projection: <b>NAD 1983 StatePlane South Carolina FIPS 3900 Feet</b>	Survey Date: <b>02 FEB 2018</b> Project Reference Number: <b>CESAC-PRA-0002</b> Survey Type: <b>CONDITION</b>	Production Date: <b>12 FEB 2018</b>
--	--	---	---	--	--

<b>Shoalest Sounding</b> Sounding <i>Sounding may cover several point areas and is calculated per reach quarter area</i> "+ " indicates sounding above MLLW	<b>USCG Beacon</b> Green Red White	<b>USCG Buoy</b> Green Red Coast Guard Racon	White Yellow USCG Light	<b>Depth in feet</b> 0-3 3 to 6 6 to 9 9 to 12 Greater Than 12
--	---	---	-------------------------------	---

**Production Notes:**

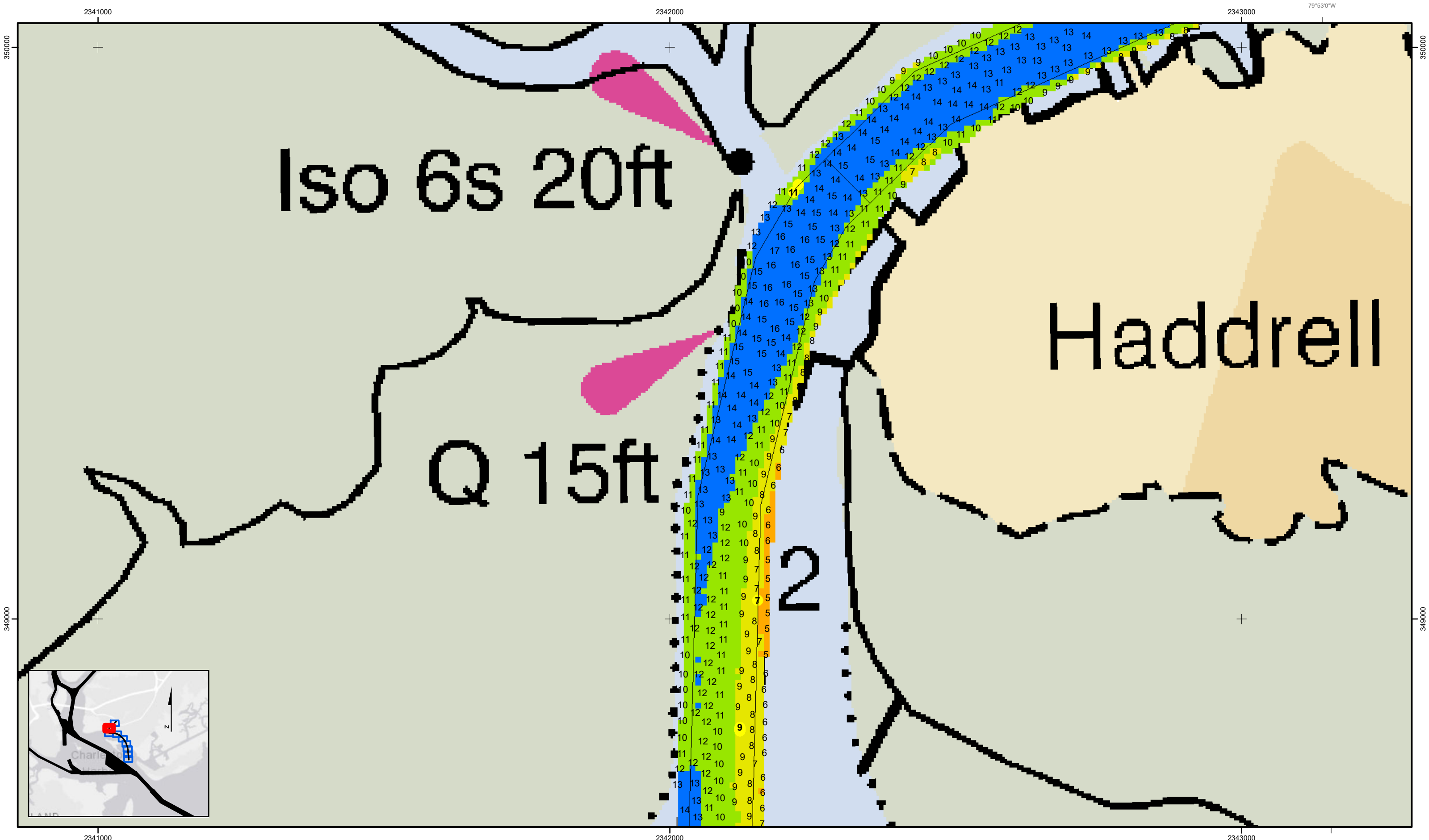
- The information depicted on this product is for plotting purposes only.
- Vector hydrographic data derived from surveys conducted by the USACE and approved partners.
- Soundings are in feet and refer to Mean Lower Low Water (MLLW).
- Raster Background: PanSharpened Worldview-2 imagery dated 2014.

In no event shall the U.S. Army Corps of Engineers, Charleston District Office, Spatial Data Branch be liable for direct, indirect, incidental, consequential or special damages of any kind, including, but not limited to, loss of anticipated profits or benefits arising out of use of or reliance on the data.

These data sets have been developed from the best available sources. Although efforts have been made to ensure that the datasets are accurate and reliable, errors and variable conditions originating from physical sources used to develop the data may be reflected in the data supplied.

This product is not intended to be used for navigation. Mariners are encouraged to use all prudent safety measures.

U.S. Army Corps of Engineers  
Charleston District

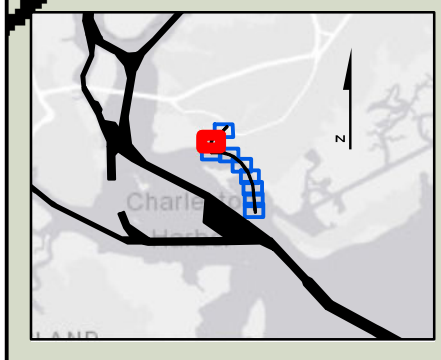


Iso 6s 20ft

Q 15ft

2

Haddrell



Shem Creek  
The information depicted on this map represents the results of surveys made on the dates indicated and can only be considered as indicating the general conditions existing at that time.  
Concluded on: **02 FEB 2018**  
Mount Pleasant, South Carolina

U.S. ARMY ENGINEER DISTRICT CORPS OF ENGINEERS CHARLESTON, SOUTH CAROLINA	Designed By: <b>eHydro Software v3.82</b>	Survey Date: <b>02 FEB 2018</b>	Production Date: <b>12 FEB 2018</b>
SPATIAL DATA BRANCH 69A HAGOOD AVE. CHARLESTON, SC 29403 CESAC-GIS@USACE.ARMY.MIL	Reviewed By: <b>CCW</b>	Absolute Scale: <b>1:1,800</b>	Project Reference Number: <b>CESAC-PRA-0002</b>
	Reference Scale: <b>1 inch = 150 feet</b>	Survey Type: <b>CONDITION</b>	
	Projection: <b>NAD 1983 StatePlane South Carolina FIPS 3900 Feet</b>		

**Shoalest Sounding**  
● Sounding  
Sounding may cover several point areas and is calculated per reach quarter area  
\*+ indicates sounding above MLLW

**USCG Beacon**  
■ Green  
▲ Red  
□ White

**USCG Buoy**  
● Green  
● Red  
● Coast Guard Racon

○ White  
○ Yellow  
○ USCG Light

**Depth in feet**  
■ 0-3  
■ 3 to 6  
■ 6 to 9  
■ 9 to 12  
■ Greater Than 12

0 250 500 Feet

**Production Notes:**

- The information depicted on this product is for plotting purposes only.
- Vector hydrographic data derived from surveys conducted by the USACE and approved partners.
- Soundings are in feet and refer to Mean Lower Low Water (MLLW).
- Raster Background: PanSharpened Worldview-2 imagery dated 2014.

In no event shall the U.S. Army Corps of Engineers, Charleston District Office, Spatial Data Branch be liable for direct, indirect, incidental, consequential or special damages of any kind, including, but not limited to, loss of anticipated profits or benefits arising out of use of or reliance on the data.

These data sets have been developed from the best available sources. Although efforts have been made to ensure that the datasets are accurate and reliable, errors and variable conditions originating from physical sources used to develop the data may be reflected in the data supplied.

This product is not intended to be used for navigation.  
Mariners are encouraged to use all prudent safety measures.

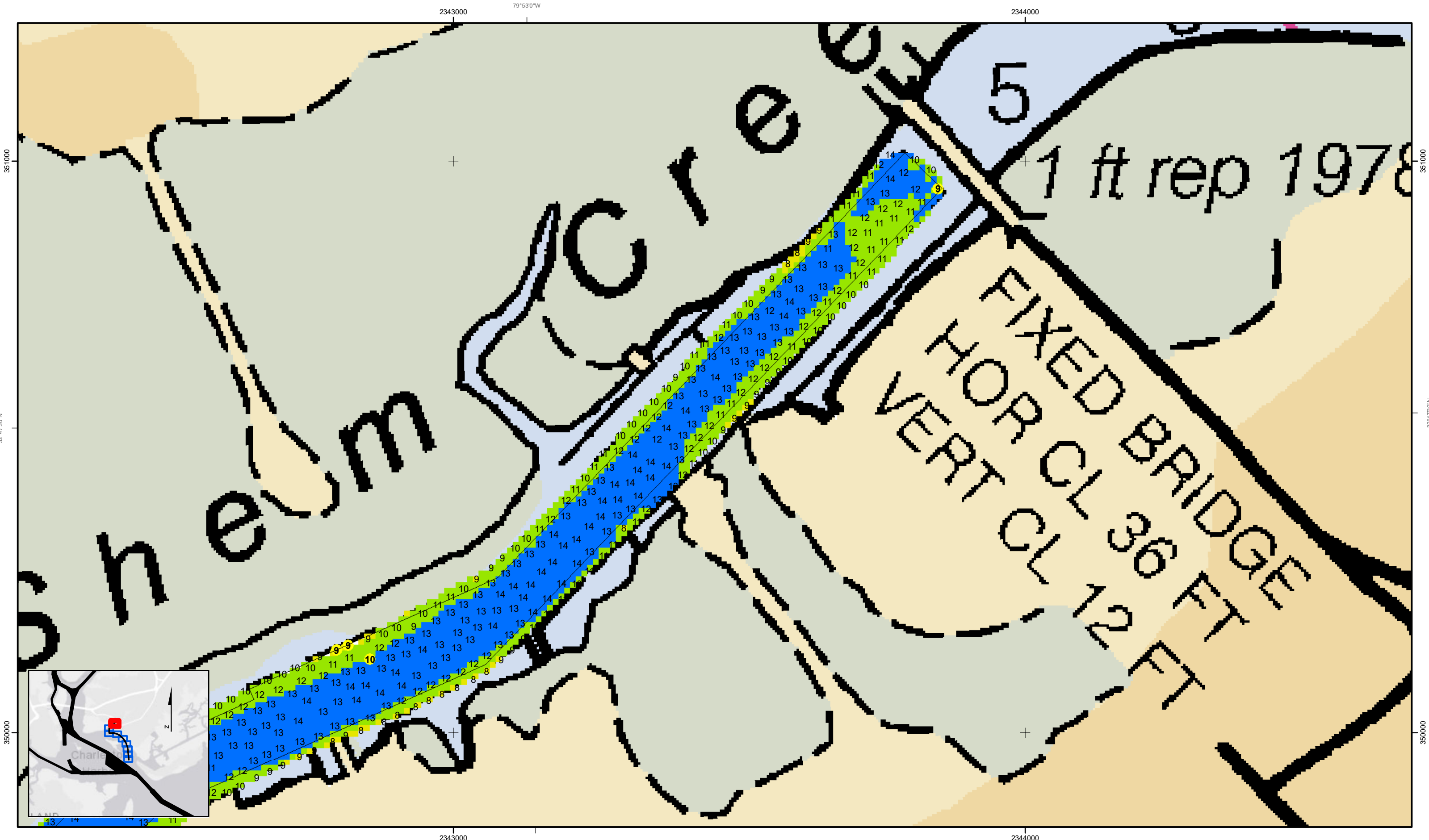


2341000 2342000 2343000 79°53'0"W

3490000 3490000

2341000 2342000 2343000 79°53'0"W





**Shem Creek**  
 The information depicted on this map represents the results of surveys made on the dates indicated and can only be considered as indicating the general conditions existing at that time.  
 Concluded on: **02 FEB 2018**  
 Mount Pleasant, South Carolina

U.S. ARMY ENGINEER DISTRICT CORPS OF ENGINEERS CHARLESTON, SOUTH CAROLINA	Designed By: <b>eHydro Software v3.82</b>	Survey Date: <b>02 FEB 2018</b>	Production Date: <b>12 FEB 2018</b>
SPATIAL DATA BRANCH 69A HAGOOD AVE. CHARLESTON, SC 29403 CESAC-GIS@USACE.ARMY.MIL	Reviewed By: <b>CCW</b>	Absolute Scale: <b>1:1,800</b>	Project Reference Number: <b>CESAC-PRA-0002</b>
	Reference Scale: <b>1 inch = 150 feet</b>	Survey Type: <b>CONDITION</b>	
	Projection: <b>NAD 1983 StatePlane South Carolina FIPS 3900 Feet</b>		

**Shoalest Sounding**  
 Sounding may cover several point areas and is calculated per reach quarter area  
 "+." indicates sounding above MLLW

**USCG Beacon**  
 Green  
 Red  
 White

**USCG Buoy**  
 Green  
 Red  
 Coast Guard Racon

**White**  
 Yellow  
 USCG Light

**Depth in feet**  
 0-3  
 3 to 6  
 6 to 9  
 9 to 12  
 Greater Than 12

0 250 500 Feet

**Production Notes:**  
 1. The information depicted on this product is for plotting purposes only  
 2. Vector hydrographic data derived from surveys conducted by the USACE and approved partners  
 3. Soundings are in feet and refer to Mean Lower Low Water (MLLW)  
 4. Raster Background: PanSharpened Worldview-2 imagery dated 2014

In no event shall the U.S. Army Corps of Engineers, Charleston District Office, Spatial Data Branch be liable for direct, indirect, incidental, consequential or special damages of any kind, including, but not limited to, loss of anticipated profits or benefits arising out of use of or reliance on the data.  
 These data sets have been developed from the best available sources. Although efforts have been made to ensure that the datasets are accurate and reliable, errors and variable conditions originating from physical sources used to develop the data may be reflected in the data supplied.  
 This product is not intended to be used for navigation.  
 Mariners are encouraged to use all prudent safety measures.



351000  
350000  
350000  
350000

2343000 79°53'0"W 2344000  
2343000 79°53'0"W 2344000