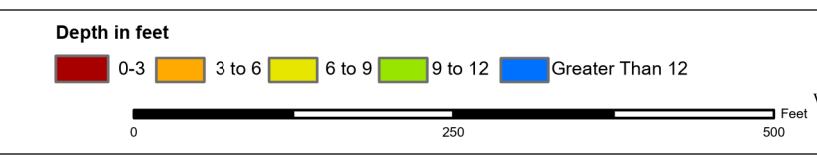


Shem Creek
 The information depicted on this map represents the results of surveys made on the dates indicated and can only be considered as indicating the general conditions existing at that time.
 Concluded on: **05 APR 2024**
 Mount Pleasant, South Carolina

U.S. ARMY ENGINEER DISTRICT CORPS OF ENGINEERS CHARLESTON, SOUTH CAROLINA		USACE	Survey Date: 05 APR 2024	Production Date: 12 APR 2024
Reviewed By: CCW	Absolute Scale: 1:1,800	Project Reference Number: CESAC-PRA-0002		
SPATIAL DATA BRANCH 69A HAGOOD AVE. CHARLESTON, SC 29403		Survey Type: CONDITION		
CESAC-GIS@USACE.ARMY.MIL	Projection: NAD 1983 NSRS2007 StatePlane South Carolina FIPS 3900 Ft Intl			

Shoalest Sounding

Sounding
 Sounding may cover several point areas and is calculated per reach quarter area
 "*" indicates sounding above MLLW



Production Notes:

- The information depicted on this product is for plotting purposes only
- Vector hydrographic data derived from surveys conducted by the USACE and approved partners to Mean Lower Low Water (MLLW)
- Soundings are in feet and refer to Mean Lower Low Water (MLLW)
- Raster Background: PanSharpened Worldview-2 imagery dated 2014

In no event shall the U.S. Army Corps of Engineers, Charleston District Office, Spatial Data Branch be liable for direct, indirect, incidental, consequential or special damages of any kind, including, but not limited to, loss of anticipated profits or benefits arising out of use of or reliance on the data.
 These data sets have been developed from the best available sources. Although efforts have been made to ensure that the datasets are accurate and reliable, errors and variable conditions originating from physical sources used to develop the data may be reflected in the data supplied.
This product is not intended to be used for navigation. Mariners are encouraged to use all prudent safety measures.



342000

342000

2346000

2347000

2346000

2347000

13

2

22

9

3

7-7

17

14

2

074 de

Intracoastal Waterway

35

14

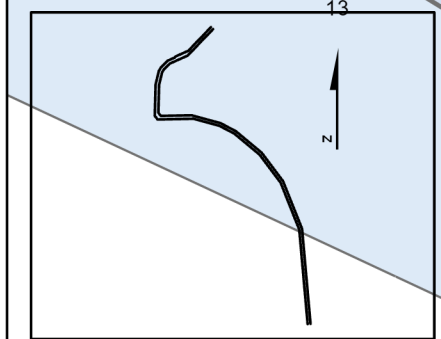
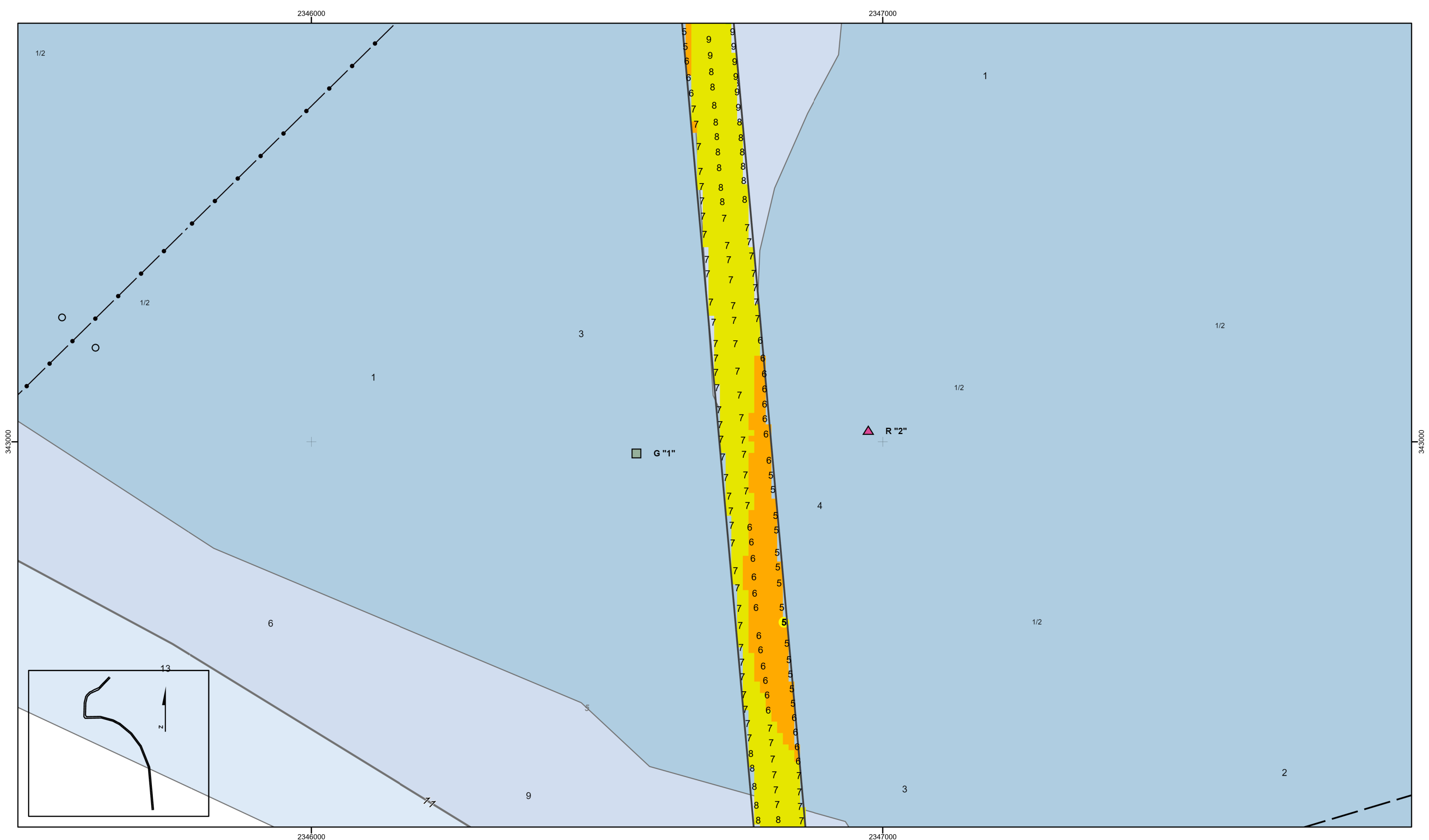
40

15

40

37

7-7

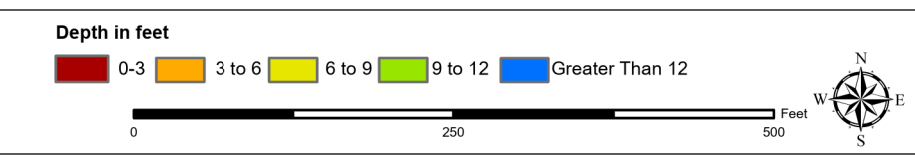


Shem Creek
 The information depicted on this map represents the results of surveys made on the dates indicated and can only be considered as indicating the general conditions existing at that time.
 Concluded on: **05 APR 2024**
 Mount Pleasant, South Carolina

U.S. ARMY ENGINEER DISTRICT CORPS OF ENGINEERS CHARLESTON, SOUTH CAROLINA		USACE	Survey Date: 05 APR 2024	Production Date: 12 APR 2024
Reviewed By: CCW	Absolute Scale: 1:1,800	Project Reference Number: CESAC-PRA-0002		
SPATIAL DATA BRANCH 69A HAGOOD AVE. CHARLESTON, SC 29403		Reference Scale: 1 inch = 150 feet	Survey Type: CONDITION	
CESAC-GIS@USACE.ARMY.MIL		Projection: NAD 1983 NSRS2007 StatePlane South Carolina FIPS 3900 Ft Intl		

Shoalest Sounding

Sounding
 Sounding may cover several point areas and is calculated per reach quarter area
 "+" indicates sounding above MLLW

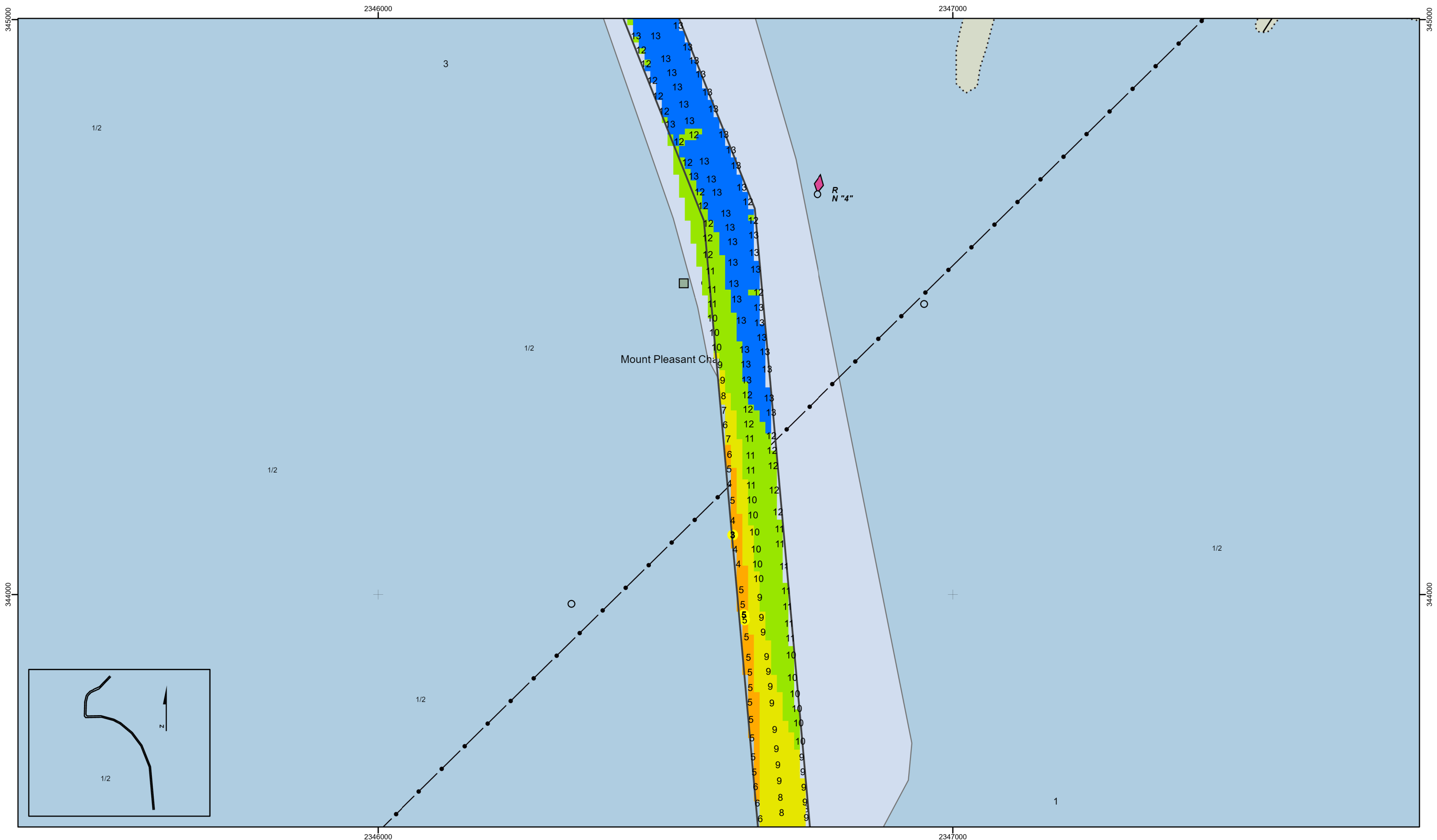


Production Notes:

- The information depicted on this product is for plotting purposes only
- Vector hydrographic data derived from surveys conducted by the USACE and approved partners
- Soundings are in feet and refer to Mean Lower Low Water (MLLW)
- Raster Background: Farnsworth Worldview-2 imagery dated 2014

In no event shall the U.S. Army Corps of Engineers, Charleston District Office, Spatial Data Branch be liable for direct, indirect, incidental, consequential or special damages of any kind, including, but not limited to, loss of anticipated profits or benefits arising out of use of or reliance on the data.
 These data sets have been developed from the best available sources. Although efforts have been made to ensure that the datasets are accurate and reliable, errors and variable conditions originating from physical sources used to develop the data may be reflected in the data supplied.
This product is not intended to be used for navigation. Mariners are encouraged to use all prudent safety measures.




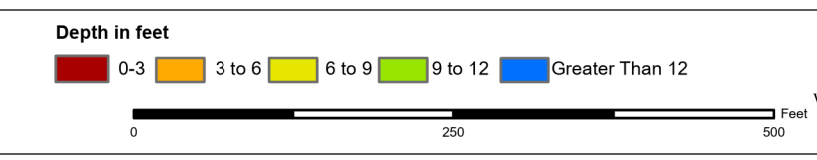


Shem Creek
 The information depicted on this map represents the results of surveys made on the dates indicated and can only be considered as indicating the general conditions existing at that time.
 Concluded on: **05 APR 2024**
 Mount Pleasant, South Carolina

U.S. ARMY ENGINEER DISTRICT
 CORPS OF ENGINEERS
 CHARLESTON, SOUTH CAROLINA
 SPATIAL DATA BRANCH
 69A HAGOOD AVE.
 CHARLESTON, SC 29403
 CESAC-GIS@USACE.ARMY.MIL

USACE	Survey Date: 05 APR 2024	Production Date: 12 APR 2024
Reviewed By: CCW	Absolute Scale: 1:1,800	Project Reference Number: CESAC-PRA-0002
Reference Scale: 1 inch = 150 feet	Survey Type: CONDITION	
Projection: NAD 1983 NSRS2007 StatePlane South Carolina FIPS 3900 Ft Intl		

Shoalest Sounding

 Sounding
Sounding may cover several point areas and is calculated per reach quarter area
 "+" indicates sounding above MLLW

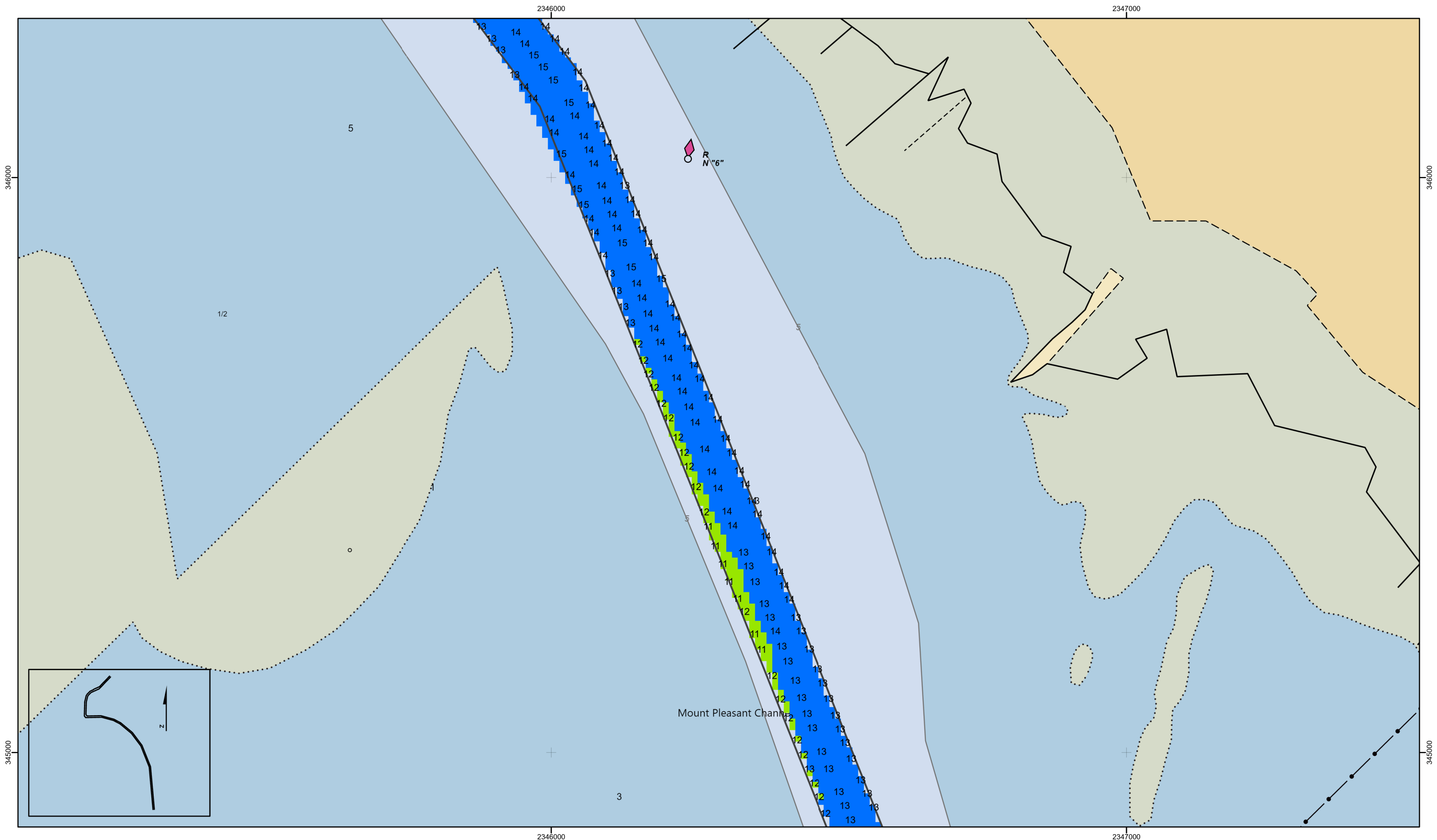


Production Notes:

- The information depicted on this product is for plotting purposes only.
- Vector hydrographic data derived from surveys conducted by the USACE and approved partners to Mean Lower Low Water (MLLW).
- Soundings are in feet and refer to Mean Lower Low Water (MLLW).
- Raster Background: Farnsworthed Worldview-2 imagery dated 2014.

In no event shall the U.S. Army Corps of Engineers, Charleston District Office, Spatial Data Branch be liable for direct, indirect, incidental, consequential or special damages of any kind, including, but not limited to, loss of anticipated profits or benefits arising out of use of or reliance on the data.
 These data sets have been developed from the best available sources. Although efforts have been made to ensure that the datasets are accurate and reliable, errors and variable conditions originating from physical sources used to develop the data may be reflected in the data supplied.
This product is not intended to be used for navigation.
 Mariners are encouraged to use all prudent safety measures.






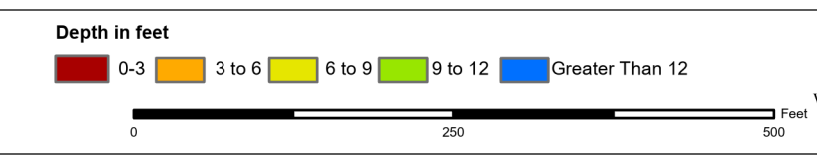
Shem Creek
 The information depicted on this map represents the results of surveys made on the dates indicated and can only be considered as indicating the general conditions existing at that time.
 Concluded on: **05 APR 2024**
 Mount Pleasant, South Carolina

U.S. ARMY ENGINEER DISTRICT
 CORPS OF ENGINEERS
 CHARLESTON, SOUTH CAROLINA
 SPATIAL DATA BRANCH
 69A HAGOOD AVE.
 CHARLESTON, SC 29403
 CESAC-GIS@USACE.ARMY.MIL

USACE	Survey Date: 05 APR 2024	Production Date: 12 APR 2024
Reviewed By: CCW	Absolute Scale: 1:1,800	Project Reference Number: CESAC-PRA-0002
Reference Scale: 1 inch = 150 feet	Survey Type: CONDITION	
Projection: NAD 1983 NSRS2007 StatePlane South Carolina FIPS 3900 Ft Intl		

Shoalest Sounding


Sounding
Sounding may cover several point areas and is calculated per reach quarter area
 "*" indicates sounding above MLLW



Production Notes:

- The information depicted on this product is for plotting purposes only.
- Vector hydrographic data derived from surveys conducted by the USACE and approved partners to Mean Lower Low Water (MLLW).
- Soundings are in feet and refer to the datum indicated.
- Raster Background: Farnsworth Worldview-2 imagery dated 2014.

In no event shall the U.S. Army Corps of Engineers, Charleston District Office, Spatial Data Branch be liable for direct, indirect, incidental, consequential or special damages of any kind, including, but not limited to, loss of anticipated profits or benefits arising out of use of or reliance on the data.
 These data sets have been developed from the best available sources. Although efforts have been made to ensure that the datasets are accurate and reliable, errors and variable conditions originating from physical sources used to develop the data may be reflected in the data supplied.
This product is not intended to be used for navigation.
Mariners are encouraged to use all prudent safety measures.



346000

345000

2346000

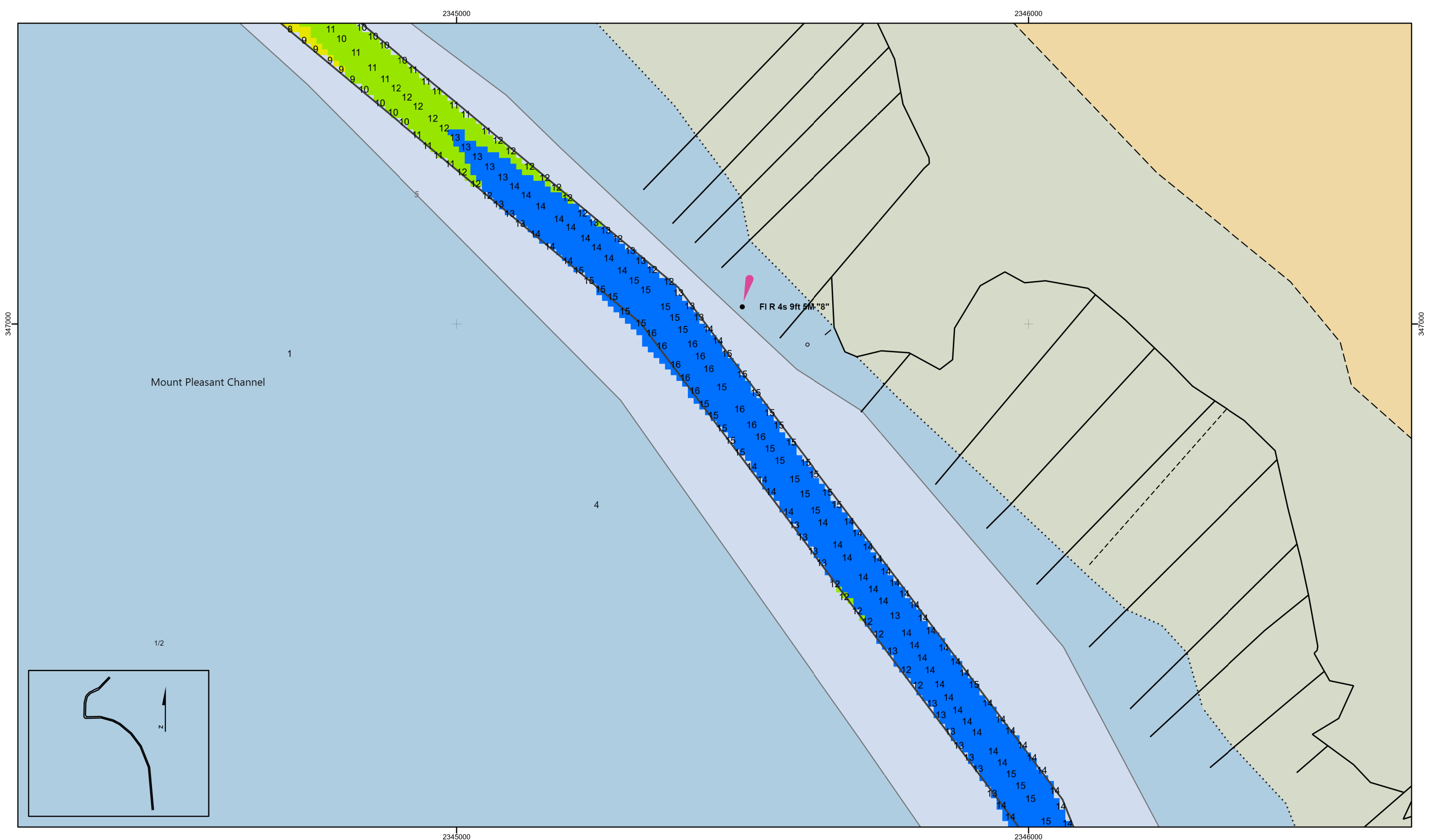
2346000

2347000

2347000

346000


345000



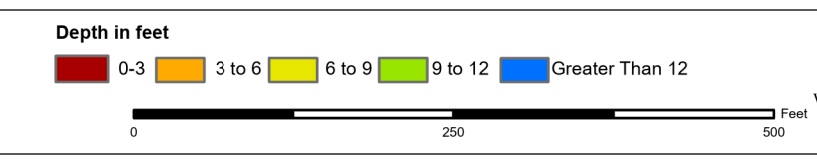
Shem Creek
 The information depicted on this map represents the results of surveys made on the dates indicated and can only be considered as indicating the general conditions existing at that time.
 Concluded on: **05 APR 2024**
 Mount Pleasant, South Carolina

U.S. ARMY ENGINEER DISTRICT
 CORPS OF ENGINEERS
 CHARLESTON, SOUTH CAROLINA
 SPATIAL DATA BRANCH
 69A HAGOOD AVE.
 CHARLESTON, SC 29403
 CESAC-GIS@USACE.ARMY.MIL

USACE	Survey Date: 05 APR 2024	Production Date: 12 APR 2024
Reviewed By: CCW	Absolute Scale: 1:1,800	Project Reference Number: CESAC-PRA-0002
Reference Scale: 1 inch = 150 feet	Survey Type: CONDITION	
Projection: NAD 1983 NSRS2007 StatePlane South Carolina FIPS 3900 Ft Intl		

Shoalest Sounding 

Sounding
Sounding may cover several point areas and is calculated per reach quarter area
 "*" indicates sounding above MLLW



Production Notes:

- The information depicted on this product is for plotting purposes only.
- Vector hydrographic data derived from surveys conducted by the USACE and approved partners to Mean Lower Low Water (MLLW).
- Soundings are in feet and refer to Mean Lower Low Water (MLLW).
- Raster Background: PanSharpened Worldview-2 imagery dated 2014.

In no event shall the U.S. Army Corps of Engineers, Charleston District Office, Spatial Data Branch be liable for direct, indirect, incidental, consequential or special damages of any kind, including, but not limited to, loss of anticipated profits or benefits arising out of use of or reliance on the data.
 These data sets have been developed from the best available sources. Although efforts have been made to ensure that the datasets are accurate and reliable, errors and variable conditions originating from physical sources used to develop the data may be reflected in the data supplied.
This product is not intended to be used for navigation.
Mariners are encouraged to use all prudent safety measures.



347000

347000

2345000

2346000

2345000

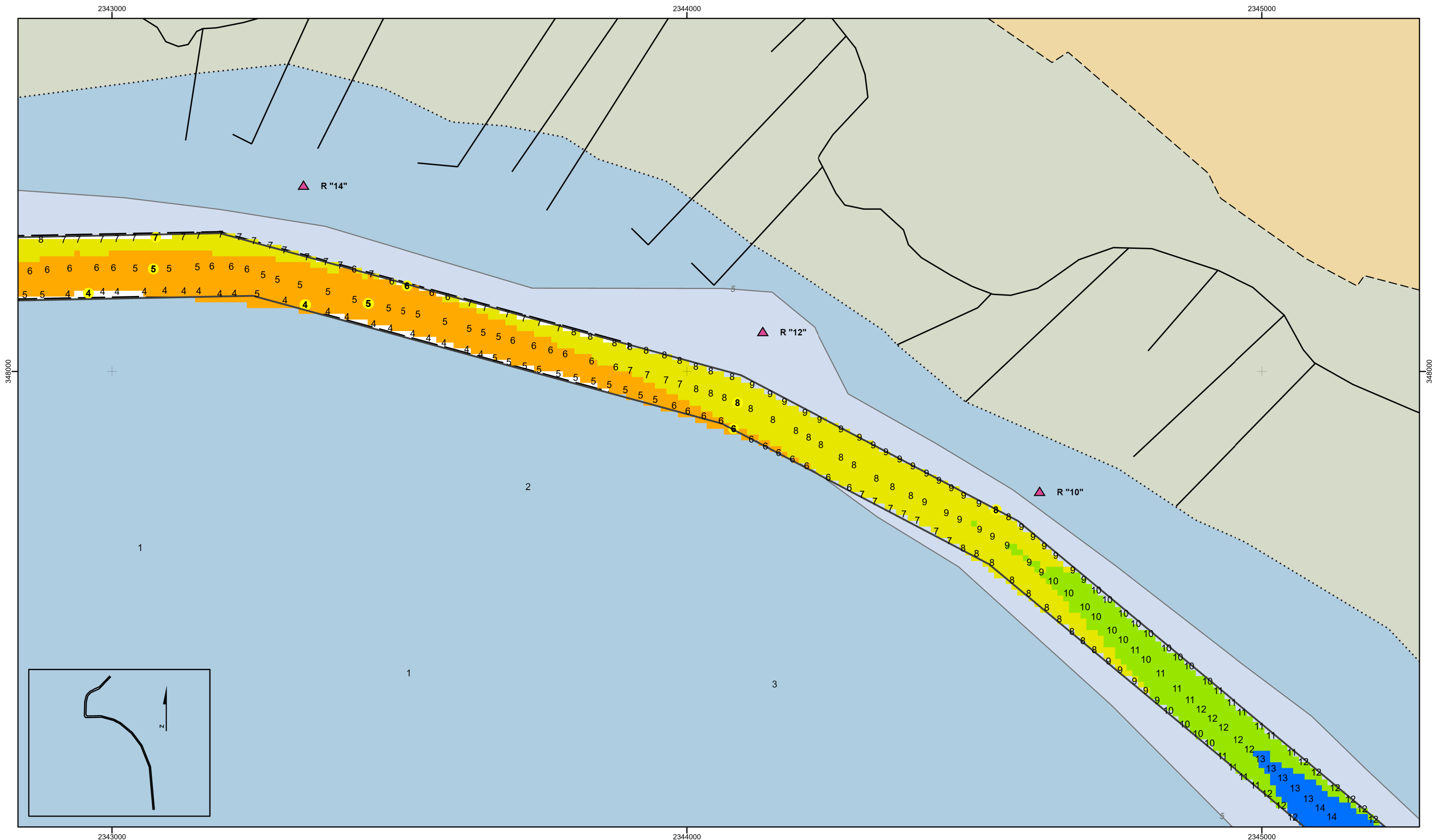
2346000

Mount Pleasant Channel

1/2

Page 5 of 9

SHEET
 REFERENCE
 NUMBER
C002

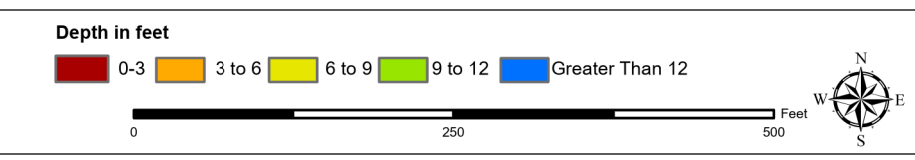


Shem Creek
 The information depicted on this map represents the results of surveys made on the dates indicated and can only be considered as indicating the general conditions existing at that time.
 Concluded on: **05 APR 2024**
 Mount Pleasant, South Carolina

U.S. ARMY ENGINEER DISTRICT CORPS OF ENGINEERS CHARLESTON, SOUTH CAROLINA		USACE	Survey Date: 05 APR 2024	Production Date: 12 APR 2024
Reviewed By: CCW	Absolute Scale: 1:1,800	Project Reference Number: CESAC-PRA-0002		
SPATIAL DATA BRANCH 69A HAGOOD AVE. CHARLESTON, SC 29403		Survey Type: CONDITION		
Reference Scale: 1 inch = 150 feet		Projection: NAD 1983 NSRS2007 StatePlane South Carolina FIPS 3900 Ft Intl		
CESAC-GIS@USACE.ARMY.MIL				

Shoalest Sounding

Sounding
 Sounding may cover several point areas and is calculated per reach quarter area
 "*" indicates sounding above MLLW



Production Notes:

- The information depicted on this product is for plotting purposes only
- Vector hydrographic data derived from surveys conducted by the USACE and approved partners
- Soundings are in feet and refer to Mean Lower Low Water (MLLW)
- Raster Background: Farnsworthed Worldview-2 imagery dated 2014

In no event shall the U.S. Army Corps of Engineers, Charleston District Office, Spatial Data Branch be liable for direct, indirect, incidental, consequential or special damages of any kind, including, but not limited to, loss of anticipated profits or benefits arising out of use of or reliance on the data.

These data sets have been developed from the best available sources. Although efforts have been made to ensure that the datasets are accurate and reliable, errors and variable conditions originating from physical sources used to develop the data may be reflected in the data supplied.

This product is not intended to be used for navigation. Mariners are encouraged to use all prudent safety measures.



3480000

3480000

2343000

2344000

2345000

2343000

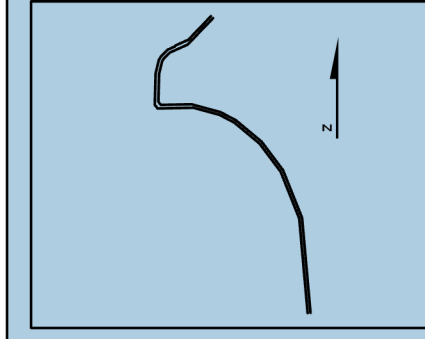
2344000

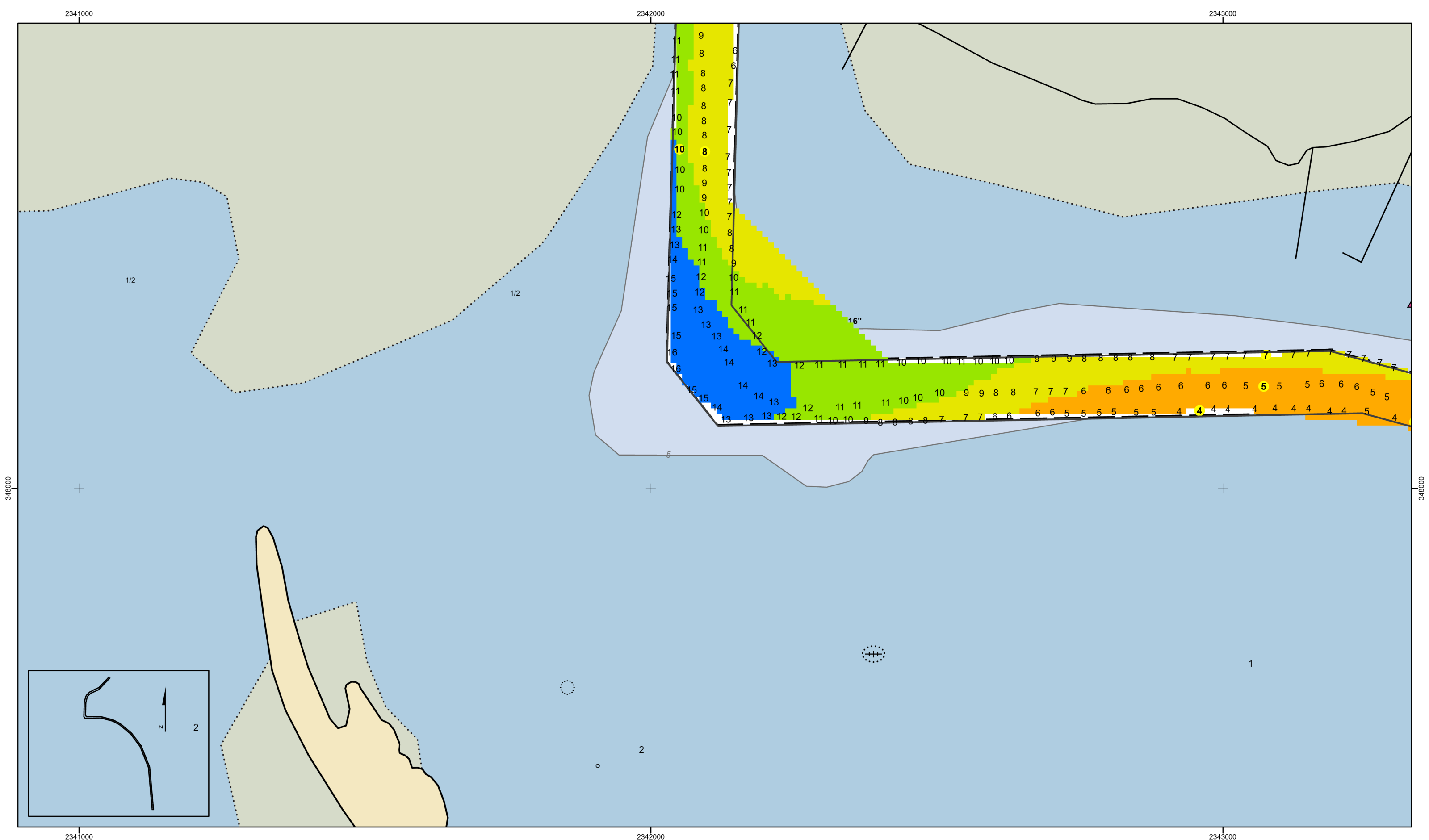
2345000

1

2

3





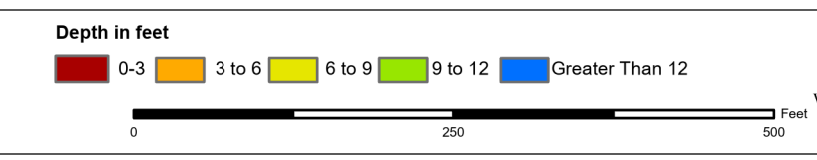
Shem Creek
 The information depicted on this map represents the results of surveys made on the dates indicated and can only be considered as indicating the general conditions existing at that time.
 Concluded on: **05 APR 2024**
 Mount Pleasant, South Carolina

U.S. ARMY ENGINEER DISTRICT
 CORPS OF ENGINEERS
 CHARLESTON, SOUTH CAROLINA
 SPATIAL DATA BRANCH
 69A HAGOOD AVE.
 CHARLESTON, SC 29403
 CESAC-GIS@USACE.ARMY.MIL

USACE	Survey Date: 05 APR 2024	Production Date: 12 APR 2024
Reviewed By: CCW	Absolute Scale: 1:1,800	Project Reference Number: CESAC-PRA-0002
Reference Scale: 1 inch = 150 feet	Survey Type: CONDITION	
Projection: NAD 1983 NSRS2007 StatePlane South Carolina FIPS 3900 Ft Intl		

Shoalest Sounding

Sounding
Sounding may cover several point areas and is calculated per reach quarter area
 "*" indicates sounding above MLLW



Production Notes:

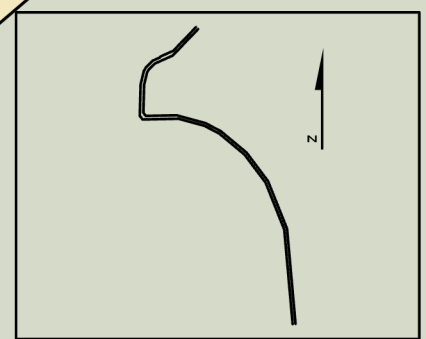
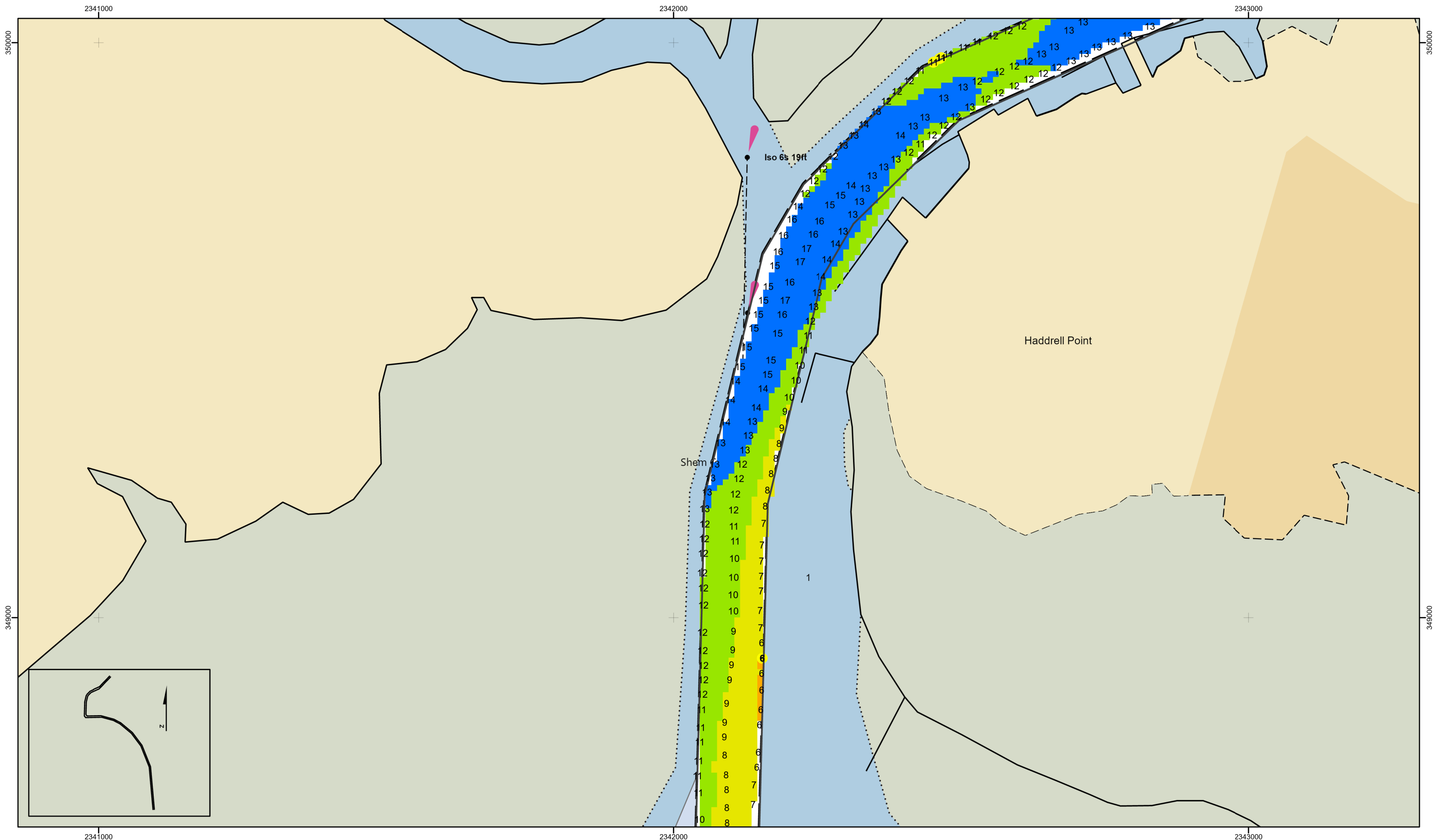
- The information depicted on this product is for plotting purposes only
- Vector hydrographic data derived from surveys conducted by the USACE and approved partners to Mean Lower Low Water (MLLW)
- Soundings are in feet and refer to Mean Lower Low Water (MLLW)
- Raster Background: PanSharpened Worldview-2 imagery dated 2014

In no event shall the U.S. Army Corps of Engineers, Charleston District Office, Spatial Data Branch be liable for direct, indirect, incidental, consequential or special damages of any kind, including, but not limited to, loss of anticipated profits or benefits arising out of use of or reliance on the data.

These data sets have been developed from the best available sources. Although efforts have been made to ensure that the datasets are accurate and reliable, errors and variable conditions originating from physical sources used to develop the data may be reflected in the data supplied.

This product is not intended to be used for navigation. Mariners are encouraged to use all prudent safety measures.



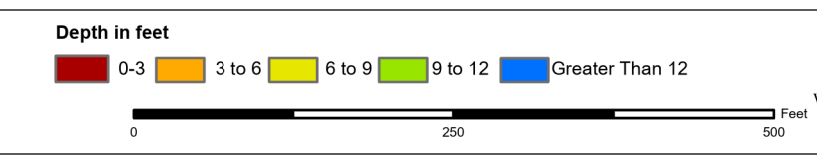


Shem Creek
 The information depicted on this map represents the results of surveys made on the dates indicated and can only be considered as indicating the general conditions existing at that time.
 Concluded on: **05 APR 2024**
 Mount Pleasant, South Carolina

U.S. ARMY ENGINEER DISTRICT CORPS OF ENGINEERS CHARLESTON, SOUTH CAROLINA		USACE	Survey Date: 05 APR 2024	Production Date: 12 APR 2024
Reviewed By: CCW	Absolute Scale: 1:1,800	Project Reference Number: CESAC-PRA-0002		
SPATIAL DATA BRANCH 69A HAGOOD AVE. CHARLESTON, SC 29403		Survey Type: CONDITION		
Reference Scale: 1 inch = 150 feet		Projection: NAD 1983 NSRS2007 StatePlane South Carolina FIPS 3900 Ft Intl		
CESAC-GIS@USACE.ARMY.MIL				

Shoalest Sounding

Sounding
 Sounding may cover several point areas and is calculated per reach quarter area
 "*" indicates sounding above MLLW



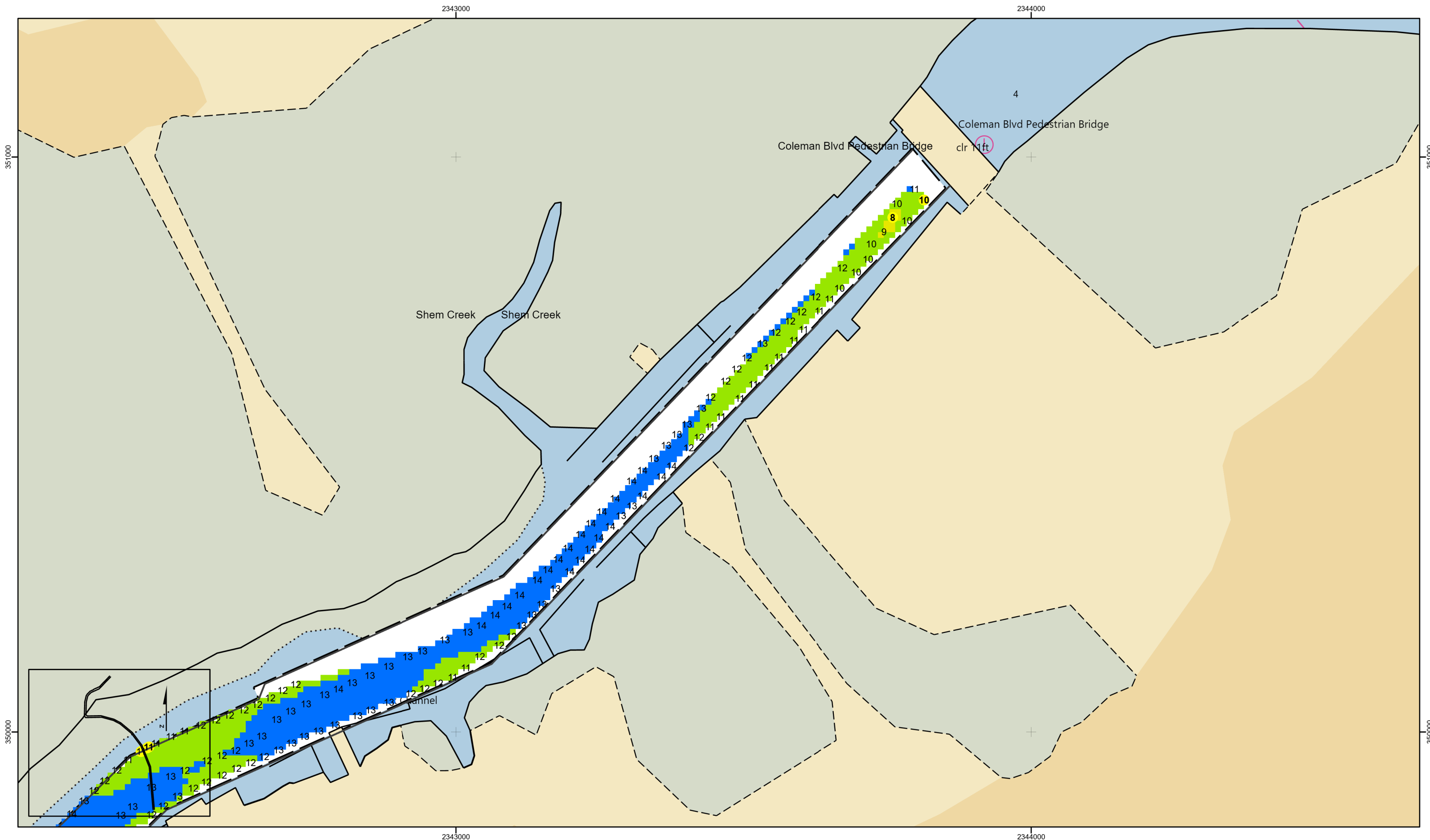
Production Notes:

- The information depicted on this product is for plotting purposes only
- Vector hydrographic data derived from surveys conducted by the USACE and approved partners to Mean Lower Low Water (MLLW)
- Soundings are in feet and refer to Mean Lower Low Water (MLLW)
- Raster Background: Farnsworth Worldview-2 imagery dated 2014

In no event shall the U.S. Army Corps of Engineers, Charleston District Office, Spatial Data Branch be liable for direct, indirect, incidental, consequential or special damages of any kind, including, but not limited to, loss of anticipated profits or benefits arising out of use of or reliance on the data.
 These data sets have been developed from the best available sources. Although efforts have been made to ensure that the datasets are accurate and reliable, errors and variable conditions originating from physical sources used to develop the data may be reflected in the data supplied.
This product is not intended to be used for navigation.
Mariners are encouraged to use all prudent safety measures.



SHEET REFERENCE NUMBER
C002
 Page 9 of 9



SHEET
REFERENCE
NUMBER
C002
Page 9 of 9

Shem Creek
The information depicted on this map represents the results of surveys made on the dates indicated and can only be considered as indicating the general conditions existing at that time.
Concluded on: **05 APR 2024**
Mount Pleasant, South Carolina

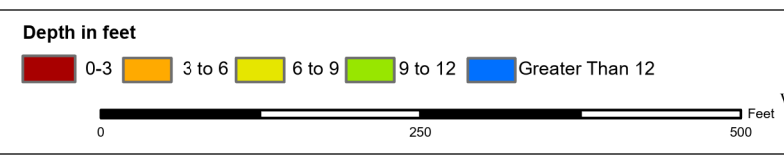
U.S. ARMY ENGINEER DISTRICT
CORPS OF ENGINEERS
CHARLESTON, SOUTH CAROLINA
SPATIAL DATA BRANCH
69A HAGOOD AVE.
CHARLESTON, SC 29403
CESAC-GIS@USACE.ARMY.MIL

USACE	Survey Date: 05 APR 2024	Production Date: 12 APR 2024
Reviewed By: CCW	Absolute Scale: 1:1,800	Project Reference Number: CESAC-PRA-0002
Reference Scale: 1 inch = 150 feet	Survey Type: CONDITION	
Projection: NAD 1983 NSRS2007 StatePlane South Carolina FIPS 3900 Ft Intl		

Shoalest Sounding

Sounding

Sounding may cover several point areas and is calculated per reach quarter area
"+" indicates sounding above MLLW



Production Notes:

- The information depicted on this product is for plotting purposes only
- Vector hydrographic data derived from surveys conducted by the USACE and approved partners to Mean Lower Low Water (MLLW)
- Soundings are in feet and refer to Mean Lower Low Water (MLLW)
- Raster Background: PanSharpened Worldview-2 imagery dated 2014

In no event shall the U.S. Army Corps of Engineers, Charleston District Office, Spatial Data Branch be liable for direct, indirect, incidental, consequential or special damages of any kind, including, but not limited to, loss of anticipated profits or benefits arising out of use of or reliance on the data.

These data sets have been developed from the best available sources. Although efforts have been made to ensure that the datasets are accurate and reliable, errors and variable conditions originating from physical sources used to develop the data may be reflected in the data supplied.

This product is not intended to be used for navigation. Mariners are encouraged to use all prudent safety measures.

