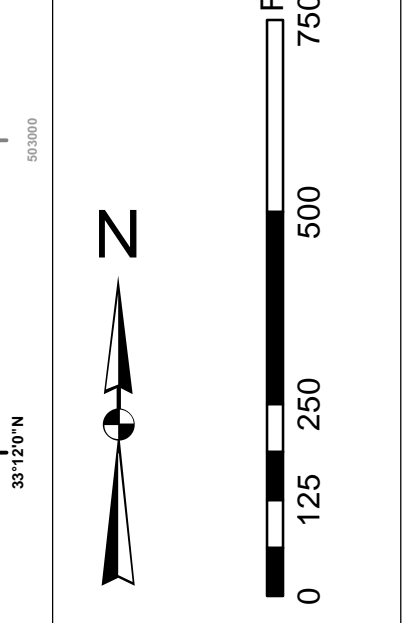
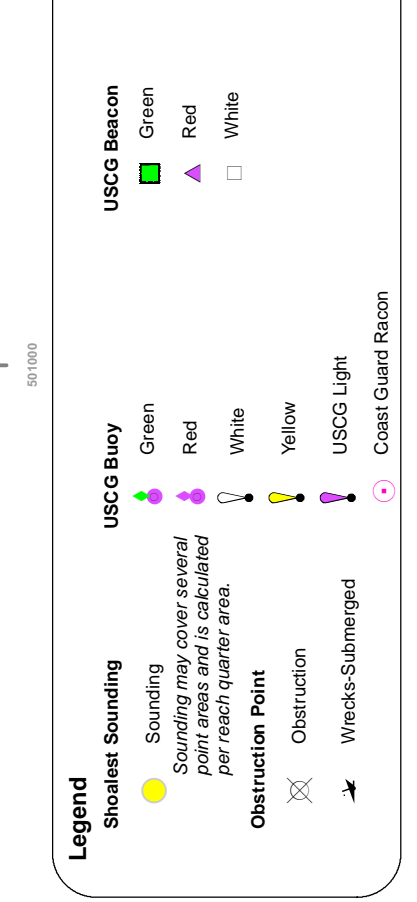


In its capacity as the U.S. Army Corps of Engineers, Charleston District Office, Special Data Branch has been authorized to publish this chart. The information on this chart is based on the most recent available data. It is not intended to be used for navigation. The information on this chart is not intended to be used for navigation. The information on this chart is not intended to be used for navigation.

**Production Notes:**  
1. This chart is the property of the U.S. Army Corps of Engineers. It is loaned to you for your use only. It is not to be reproduced, stored in a retrieval system, or transmitted, in any form or by any means, electronic, mechanical, photocopying, recording, or by any information storage and retrieval system, without the prior written permission of the U.S. Army Corps of Engineers, Charleston District Office.

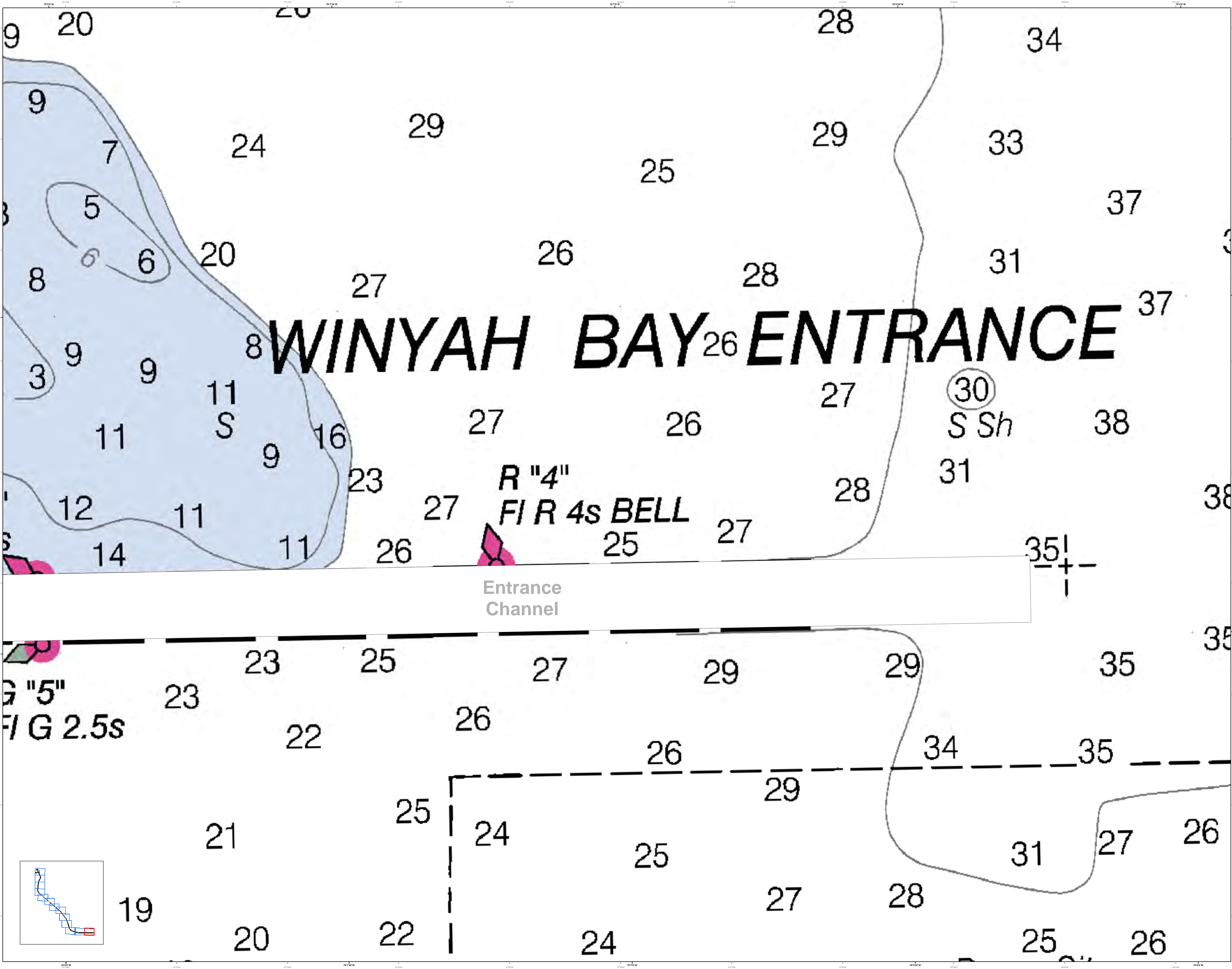


**Depth Soundings:**  
1. Soundings are in feet unless otherwise noted.  
2. Soundings are to mean low water.  
3. Soundings are to mean high water.  
4. Soundings are to mean lower low water.  
5. Soundings are to mean higher high water.



Designed By:	Hydro Software v3.82	Production Date:	07 DEC 2015
Reviewed By:	1:50,000	Project Reference Number:	PC0001D
Reference Scale:	1 inch = 250 feet	Survey Cycle:	Condition
Projection:	NAD 1983 StatePlane South Carolina FIPS 3900 Feet		

**Georgetown Harbor Channel Survey**  
The information depicted on this map represents the results of surveys made on the dates indicated and can only be considered as indicating the general character of the bottom and depth of the water. It is not intended to be used for navigation. Concluded on: DATE  
Georgetown, South Carolina

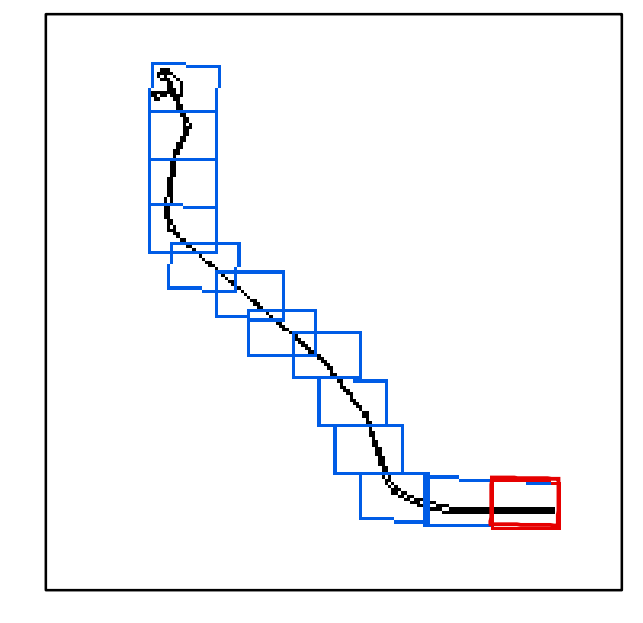


# WINYAH BAY ENTRANCE

R "4"  
FIR 4s BELL

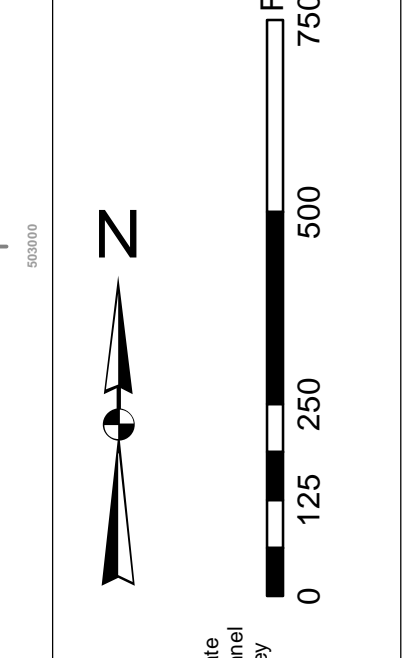
G "5"  
FIG 2.5s

Entrance  
Channel

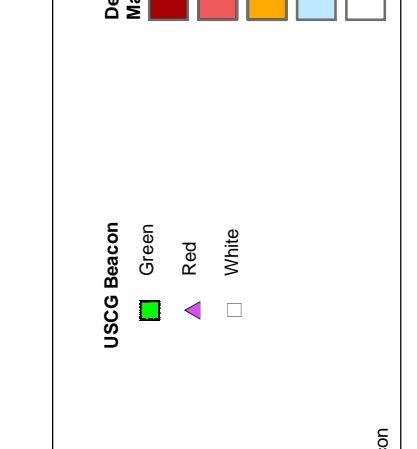


In its capacity as the U.S. Army Corps of Engineers, Charleston District Office, Special Data Branch has made this chart, including the information depicted on this map, represents the results of surveys made on the dates indicated and can only be considered as indicating the general character of the information on which it is based. It is not intended to be used for navigation. No liability is assumed for any error or omission. The user is encouraged to use all prudent safety measures.

**Production Notes:**  
1. This chart is produced in accordance with the provisions of the Hydrographic Survey Act of 1908, as amended.  
2. The data were collected by the Charleston District Office, Special Data Branch, using the following methods:  
3. The data were collected by the Charleston District Office, Special Data Branch, using the following methods:  
4. The data were collected by the Charleston District Office, Special Data Branch, using the following methods:  
5. The data were collected by the Charleston District Office, Special Data Branch, using the following methods:



**Depth Soundings:**  
1. The depth soundings are in feet.  
2. The depth soundings are in fathoms.  
3. The depth soundings are in meters.  
4. The depth soundings are in fathoms.  
5. The depth soundings are in meters.



**Legend:**  
Submerged Obstructions  
Breakers  
Entrance Channel  
Range B  
Subm dol  
Jetty in ruins  
ruins  
Subm jetty in ruins

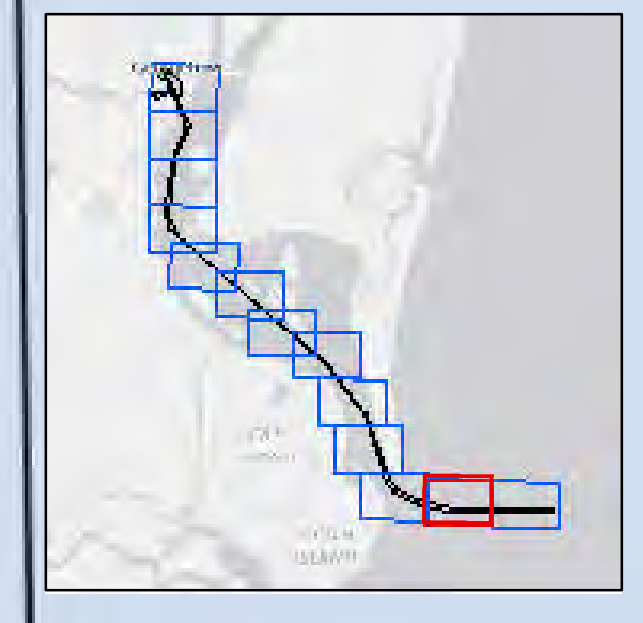
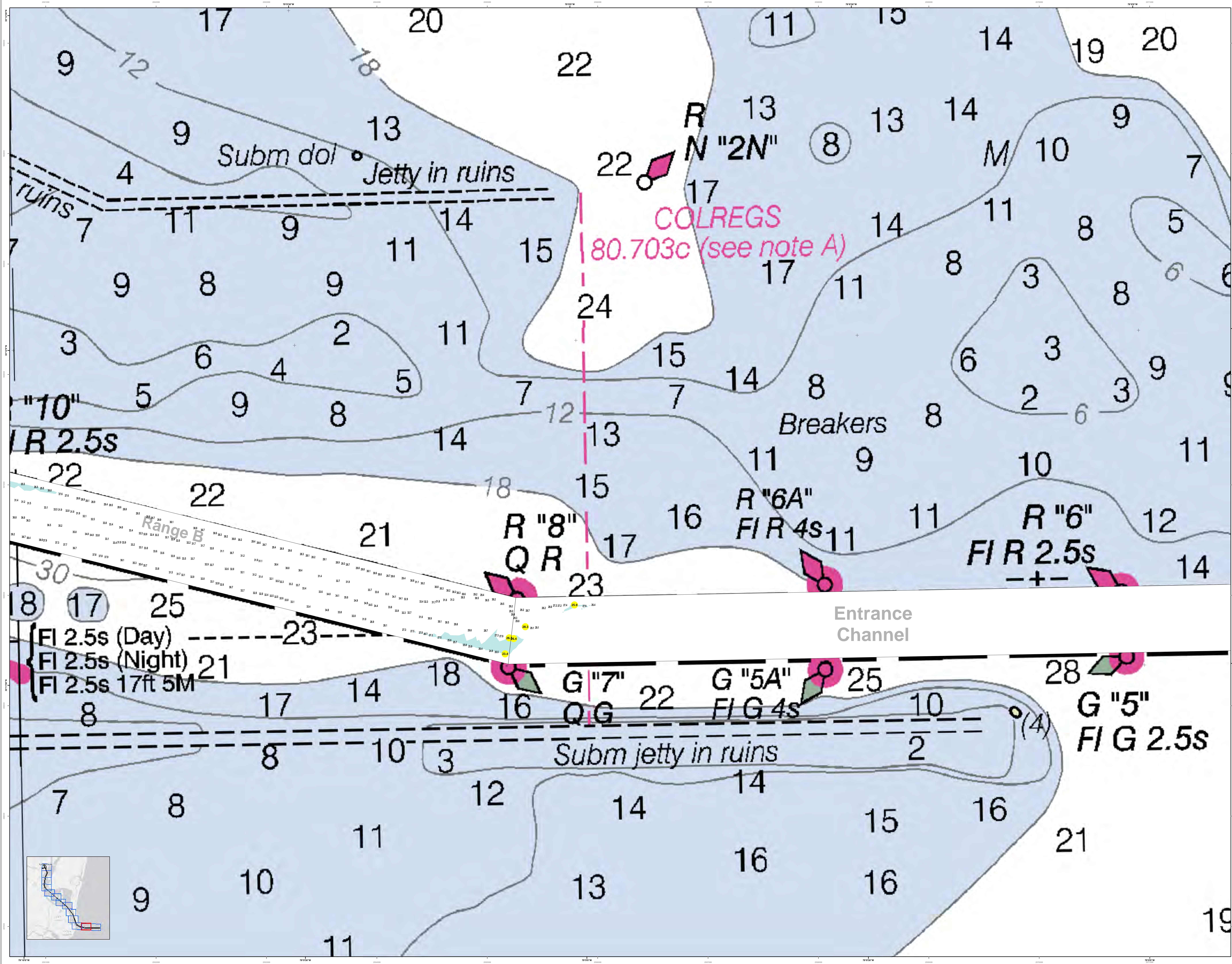
Designed By:	Hydrographic Survey v3.82	Production Date:	07 DEC 2015
Reviewed By:	Scale: 1:50,000	Project Reference Number:	07 JAN 2016
Revised By:	Scale: 1 inch = 250 feet	Survey Cycle:	NOV 2015
Projection:	NAD 1983 StatePlane South Carolina FIPS 3900 Feet	Condition:	

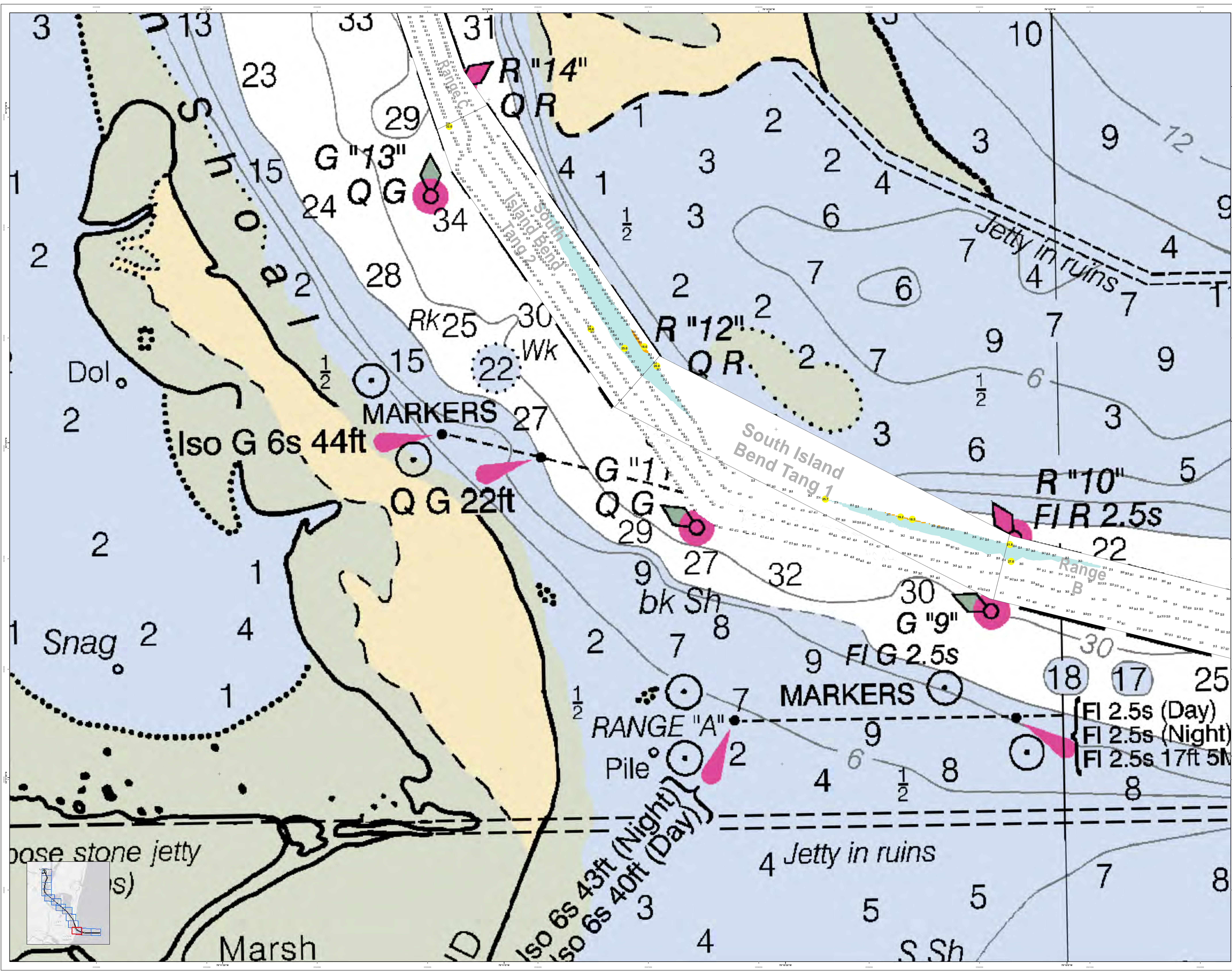
**Georgetown Harbor Channel Survey**  
The information depicted on this map represents the results of surveys made on the dates indicated and can only be considered as indicating the general character of the information on which it is based. It is not intended to be used for navigation. No liability is assumed for any error or omission. The user is encouraged to use all prudent safety measures.

Concluded on: DATE  
Georgetown, South Carolina

**Georgetown Harbor Channel Survey**  
The information depicted on this map represents the results of surveys made on the dates indicated and can only be considered as indicating the general character of the information on which it is based. It is not intended to be used for navigation. No liability is assumed for any error or omission. The user is encouraged to use all prudent safety measures.

Concluded on: DATE  
Georgetown, South Carolina





In accordance with U.S. Army Corps of Engineers, Charleston District Office, Special Data Branch, the data provided on this chart is for navigational purposes only. It is not intended to be used for any other purpose. The data was collected by a survey conducted in accordance with the standards of the International Hydrographic Organization. The data is subject to change and should be used with caution. Mariners are encouraged to use all prudent safety measures.

Projection Note:  
1. This chart is based on the North American Datum of 1983 (NAD 83).  
2. All elevations are in feet above mean low water (MLW).  
3. All soundings are in fathoms.  
4. All depths are based on MLW.

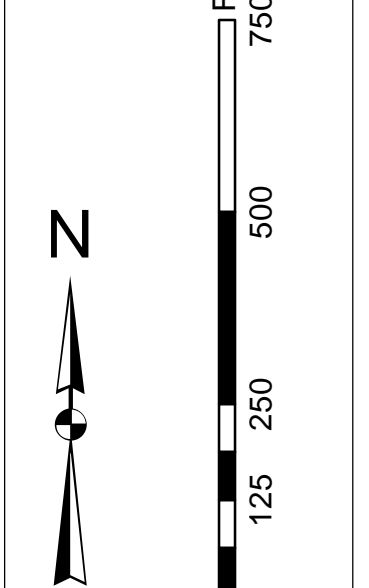


Chart Symbols:  
1. Light (Flashing) - Fl  
2. Light (Fixed) - F  
3. Light (Occulting) - Oc  
4. Light (Variable) - V  
5. Light (Sounding) - S  
6. Light (Eclipsing) - E  
7. Light (Morse) - M  
8. Light (Composite) - C  
9. Light (Composite) - C  
10. Light (Composite) - C

Chart Symbols:  
1. Buoy (Spherical) - S  
2. Buoy (Cylindrical) - C  
3. Buoy (Conical) - Co  
4. Buoy (Mushroom) - Mo  
5. Buoy (Nodular) - No  
6. Buoy (Square) - Sq  
7. Buoy (Trapezoidal) - Tr  
8. Buoy (Cylindrical) - C  
9. Buoy (Conical) - Co  
10. Buoy (Mushroom) - Mo

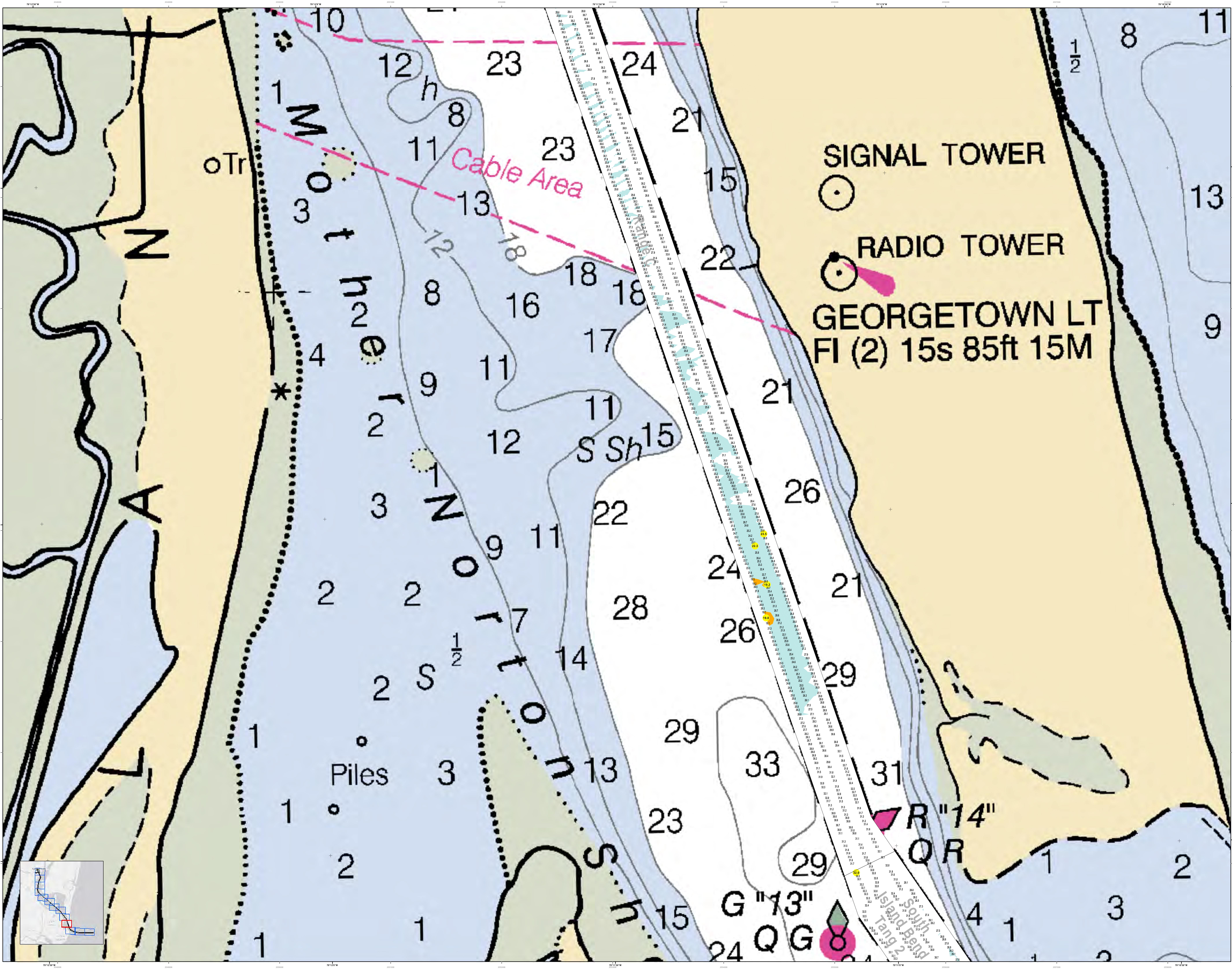
Chart Symbols:  
1. Light (Flashing) - Fl  
2. Light (Fixed) - F  
3. Light (Occulting) - Oc  
4. Light (Variable) - V  
5. Light (Sounding) - S  
6. Light (Eclipsing) - E  
7. Light (Morse) - M  
8. Light (Composite) - C  
9. Light (Composite) - C  
10. Light (Composite) - C

Production Date: 07 DEC 2015  
Production Date: 07 JAN 2016

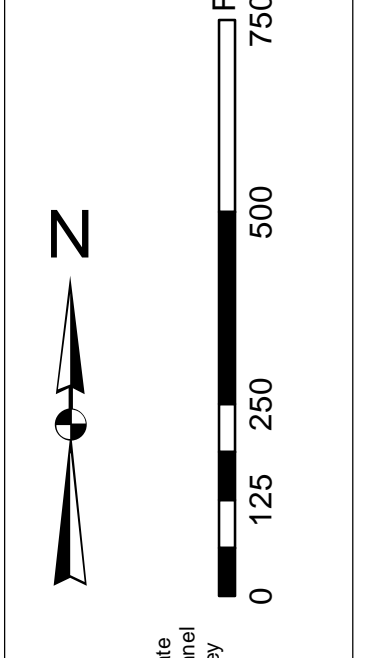
Designed By:	Hydro Software v3.82
Reviewed By:	Absolute Scale
Revised:	1:5000
Revised:	1 inch = 250 feet
Revised:	Condition
Projection:	NAD 1983 StatePlane South Carolina FPS 3800 Feet

U.S. Army Corps of Engineers	Project Reference Number:
Charleston District	16C0001D
South Carolina	Condition
Charleston District	Condition
Charleston District	Condition

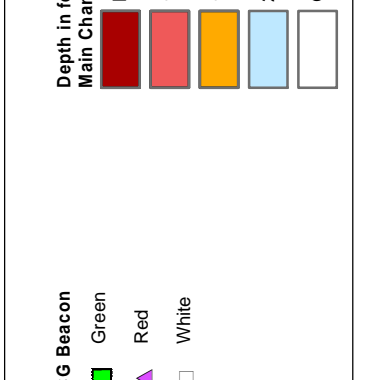
**Georgetown Harbor Channel Survey**  
The information depicted on this map represents the results of surveys made on the dates indicated and can only be considered as indicating the general character of the ground. It is not intended to be used for any other purpose.  
Concluded on: DATE  
Georgetown, South Carolina



In accordance with the U.S. Army Corps of Engineers, Charleston District Office, Special Data Branch, the data on this chart were derived from a combination of hydrographic and geodetic surveys. The data were collected by the Special Data Branch, Charleston District Office, and are the property of the U.S. Army Corps of Engineers. The data were collected by the Special Data Branch, Charleston District Office, and are the property of the U.S. Army Corps of Engineers. The data were collected by the Special Data Branch, Charleston District Office, and are the property of the U.S. Army Corps of Engineers.



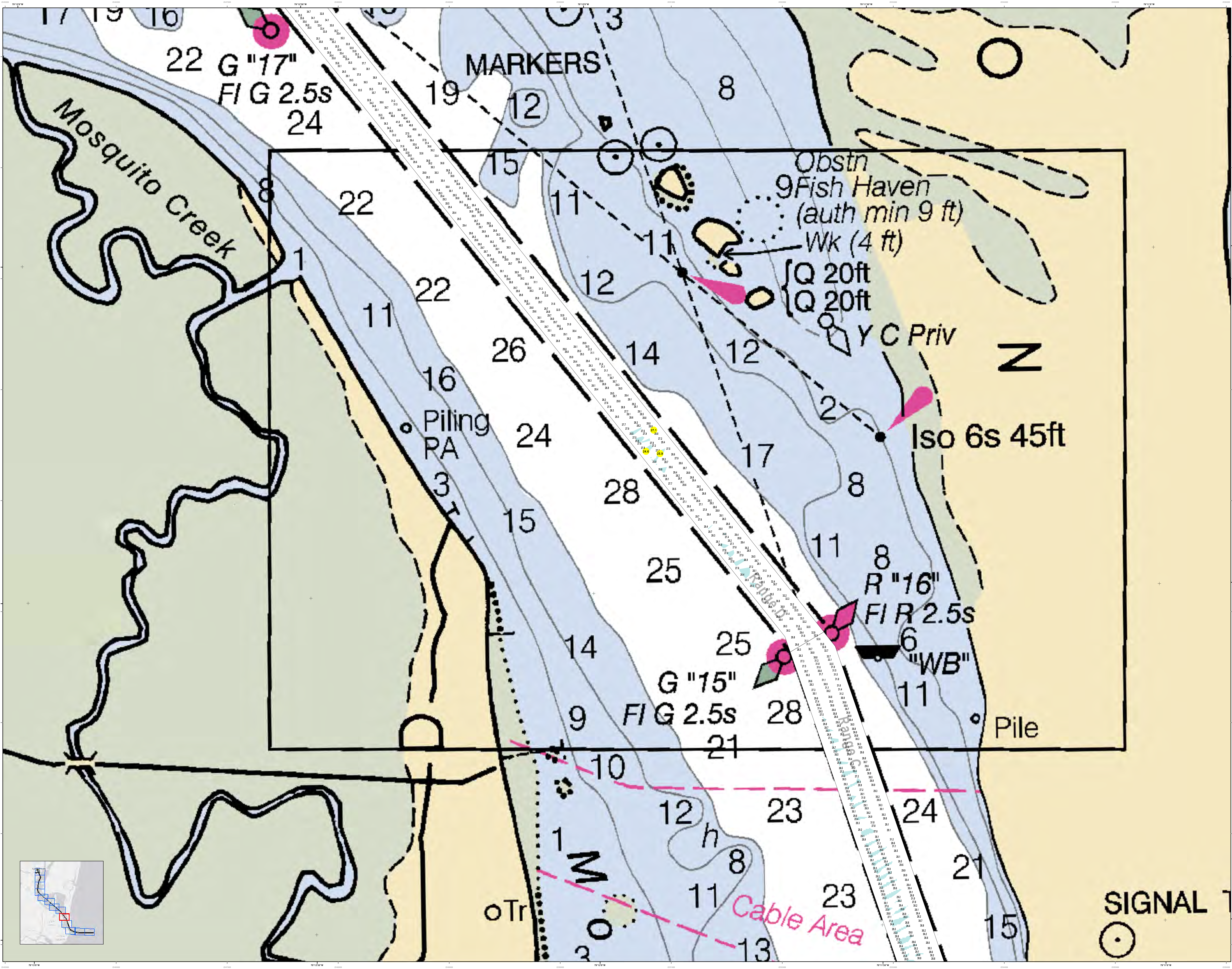
**Vertical Datum:**  
 1. Mean Low Water  
 2. Mean High Water  
 3. Mean Lower Low Water  
 4. Mean Higher High Water  
 5. Lowest Low Water  
 6. Highest High Water



**Chart Symbols:**  
 - Signal Tower: Circle with a dot  
 - Radio Tower: Circle with a dot and a triangle  
 - Light: Circle with a triangle  
 - Buoy: Circle with a number  
 - Pile: Small circle  
 - Obstruction: Circle with a cross  
 - Shoal: Circle with a cross and a triangle  
 - Island: Circle with a triangle  
 - Tang: Circle with a triangle and a number

U.S. Army Corps of Engineers Charleston District Office Special Data Branch Charleston, SC 29405	Designed By: Hydro Software v3.82	Reviewed By: 1:50,000	Scale: 1 inch = 250 feet	Projection: NAD 1983 StatePlane South Carolina FIPS 3900 Feet
Production Date: 07 DEC 2015	Project Reference Number: PC001	Sheet Title: Georgetown Harbor	Sheet Number: C001	Sheet Date: 07 JAN 2016

**Georgetown Harbor Channel Survey**  
 The information depicted on this map represents the results of surveys made on the dates indicated and can only be considered as indicating the general character of the channel. Engineering measurements are not shown.  
 Concluded on: DATE  
 Georgetown, South Carolina



**U.S. Army Corps of Engineers**  
Charleston District

**Production Date:** 07 DEC 2015  
**Survey Date:** 07 JAN 2016

**Project Reference Number:** 15000  
**Project Name:** GEORGETOWN HARBOR CHANNEL SURVEY

**Scale:** 1 inch = 250 feet  
**Projection:** NAD 1983 StatePlane South Carolina FIPS 3900 Feet

**Designed By:** J. H. B. / **Reviewed By:** J. H. B.  
**Author:** J. H. B. / **Editor:** J. H. B.

**U.S. Army Corps of Engineers**  
CHARLESTON DISTRICT  
SIGNAL BRANCH  
800 HANCOCK AVE  
CHARLESTON, SC 29405  
CESAC-GIS/USACE-ARMY/MAIL

**Georgetown Harbor Channel Survey**  
The information depicted on this map represents the results of surveys made on the dates indicated and can only be considered as indicating the general character of the bottom.

Concluded on: DATE  
Georgetown, South Carolina

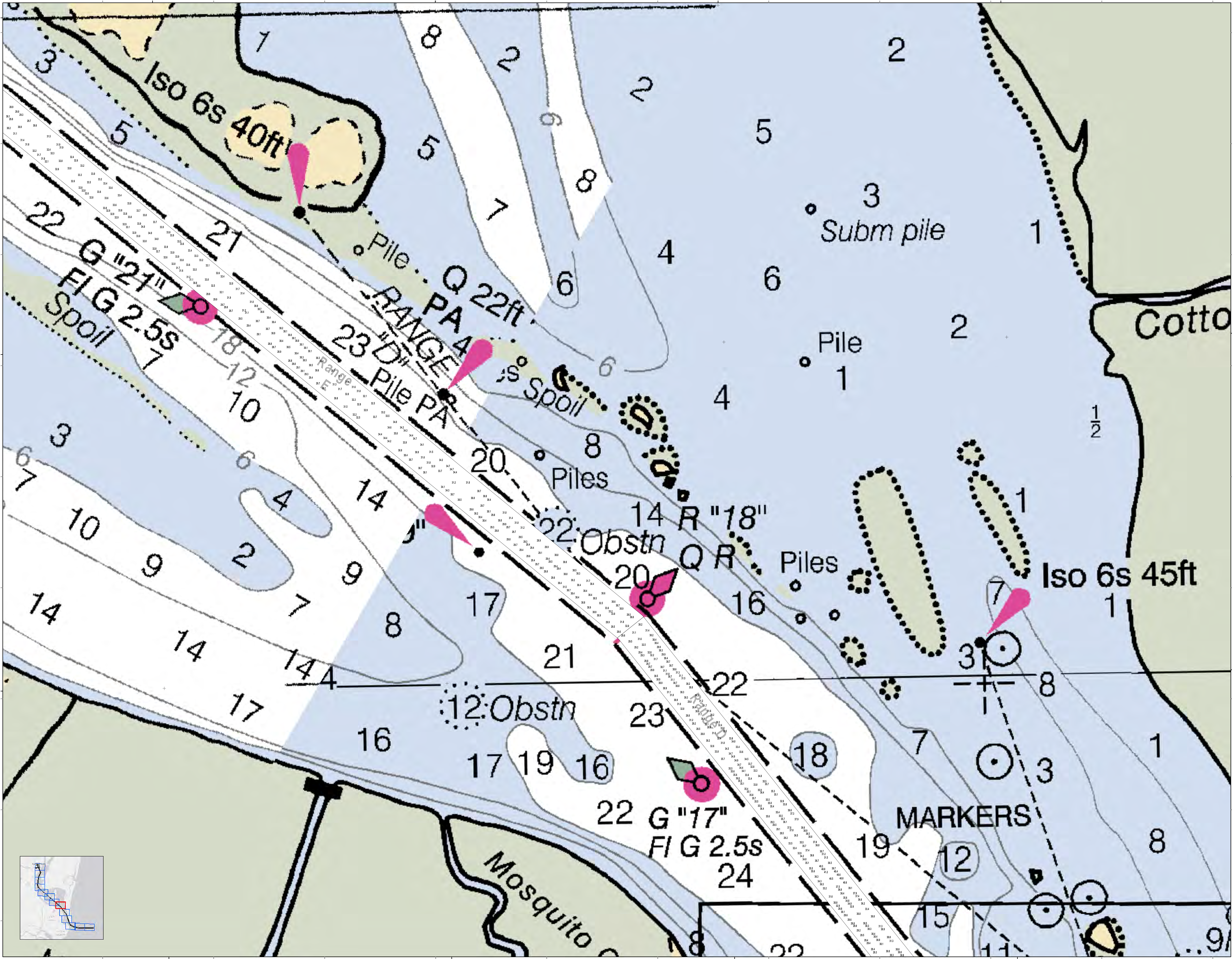
**SHEET REFERENCE NUMBER**  
C001  
SHEET 5 OF 13

**Legend:**

- Soundings:** 1-10, 11-15, 16-20, 21-25, 26-30
- Obstructions:** Obstrn, Y C Priv, Pile
- Channel Features:** Mosquito Creek, Fish Haven, Wk, Cable Area
- Markers:** Iso 6s 45ft, WB, MARKERS
- Other:** Piling RA, Tr, SIGNAL

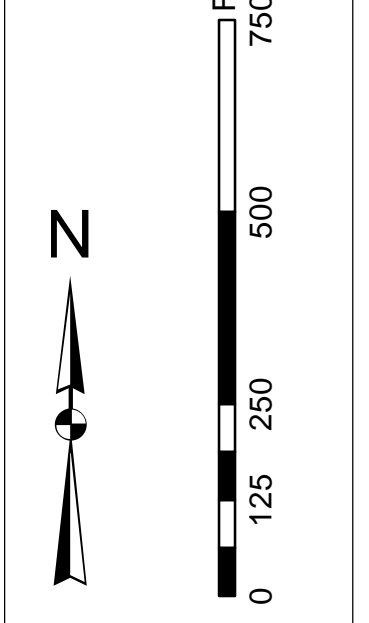
**Scale:** 0 125 250 500 750 Feet

**North Arrow:** N



In its capacity as the U.S. Army Corps of Engineers, Charleston District Office, Special Data Branch has made this chart, including the information on it, available to the public for use as a navigational aid. This chart is not intended to be used as a substitute for a current nautical chart. The user is responsible for determining the accuracy and applicability of the information on this chart for their own use. The user is also responsible for determining the accuracy and applicability of the information on this chart for their own use. The user is also responsible for determining the accuracy and applicability of the information on this chart for their own use.

**Vertical Datum:**  
1. Mean Sea Level  
2. Mean High Water  
3. Mean Low Water  
4. Lowest Low Water  
5. Lowest Low Water  
6. Mean Sea Level



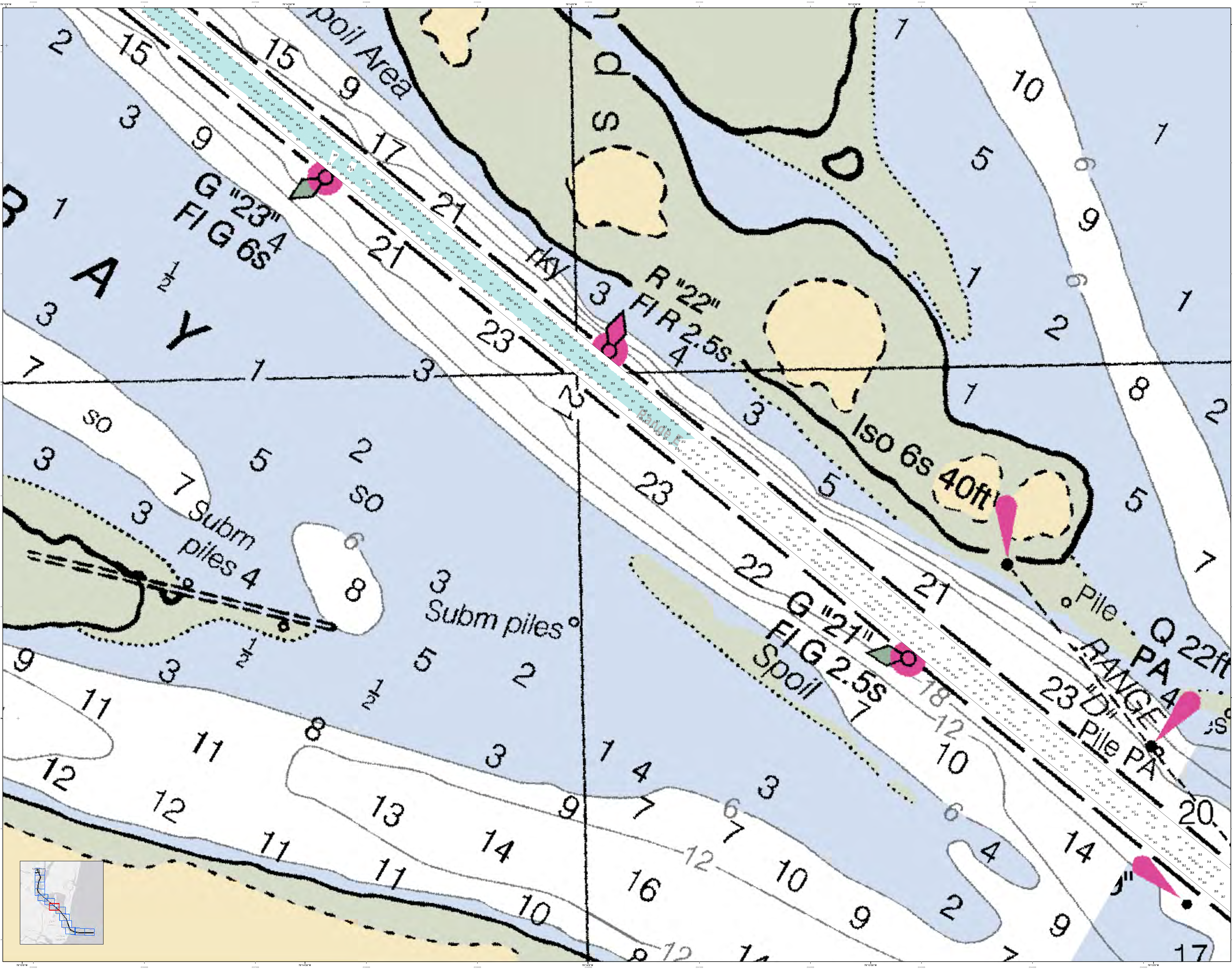
**Soundings:**  
1. 1 to 10  
2. 11 to 20  
3. 21 to 30  
4. 31 to 40  
5. 41 to 50  
6. 51 to 60  
7. 61 to 70  
8. 71 to 80  
9. 81 to 90  
10. 91 to 100

**Legend:**  
Obstruction  
Pile  
Marker  
Depth Contour  
Soundings  
Range  
Pile  
Obstn  
Piles  
Iso 6s  
MARKERS

U.S. Army Corps of Engineers Charleston District Office Special Data Branch Charleston, SC 29405	Designed By: Hydrographic Survey Reviewed By: Hydrographic Survey Scale: 1 inch = 250 feet Projection: NAD 1983 StatePlane South Carolina FIPS 3900 Feet	Survey Date: 07 DEC 2015 Project Reference Number: 16C00010 Sheet Title: Condition	Production Date: 07 JAN 2016 Project Reference Number: 16C00010 Sheet Title: Condition
---	---	---	---

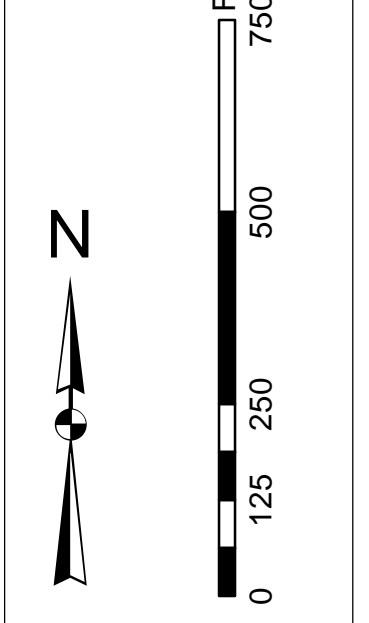
**Georgetown Harbor Channel Survey**  
The information depicted on this map represents the results of surveys made on the dates indicated and can only be considered as indicating the general character of the bottom. It is not intended to be used as a substitute for a current nautical chart.  
Concluded on: DATE  
Georgetown, South Carolina





In accordance with the U.S. Army Corps of Engineers, Charleston District Office, Special Data Branch he/she has reviewed the data and has determined that the data is reliable for the purposes of this project. The data was collected by the Special Data Branch, Charleston District Office, and is available for use in the project. The data was collected by the Special Data Branch, Charleston District Office, and is available for use in the project. The data was collected by the Special Data Branch, Charleston District Office, and is available for use in the project.

**Projections Note:**  
1. The data was collected using the North Carolina State Plane (NAD 83) projection.  
2. The data was collected using the datum of 1983.  
3. The data was collected using the datum of 1983.  
4. The data was collected using the datum of 1983.  
5. The data was collected using the datum of 1983.  
6. The data was collected using the datum of 1983.  
7. The data was collected using the datum of 1983.  
8. The data was collected using the datum of 1983.  
9. The data was collected using the datum of 1983.  
10. The data was collected using the datum of 1983.



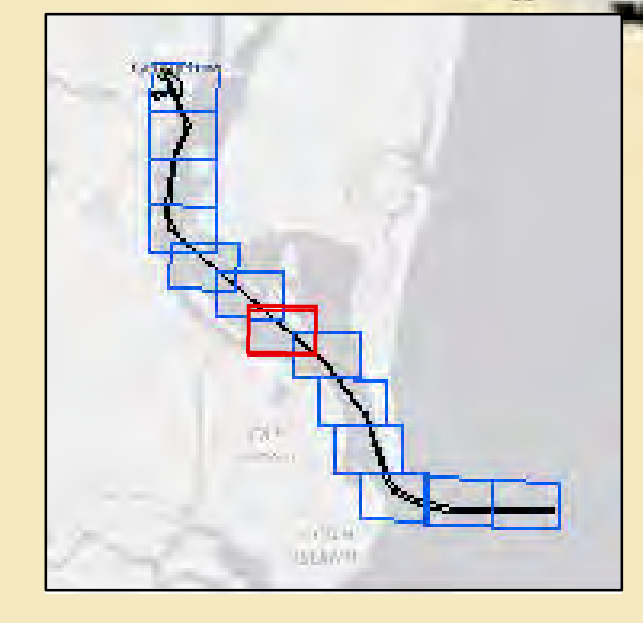
**Symbol Legend:**  
1. Spoil Area (light blue hatched)  
2. Subm piles (dashed line)  
3. Pile (pink teardrop)  
4. Range (dashed line)  
5. Bearing (dashed line)  
6. ISO (dashed line)  
7. Spoil (dotted line)  
8. Range PA (dashed line)  
9. Pile PA (dashed line)

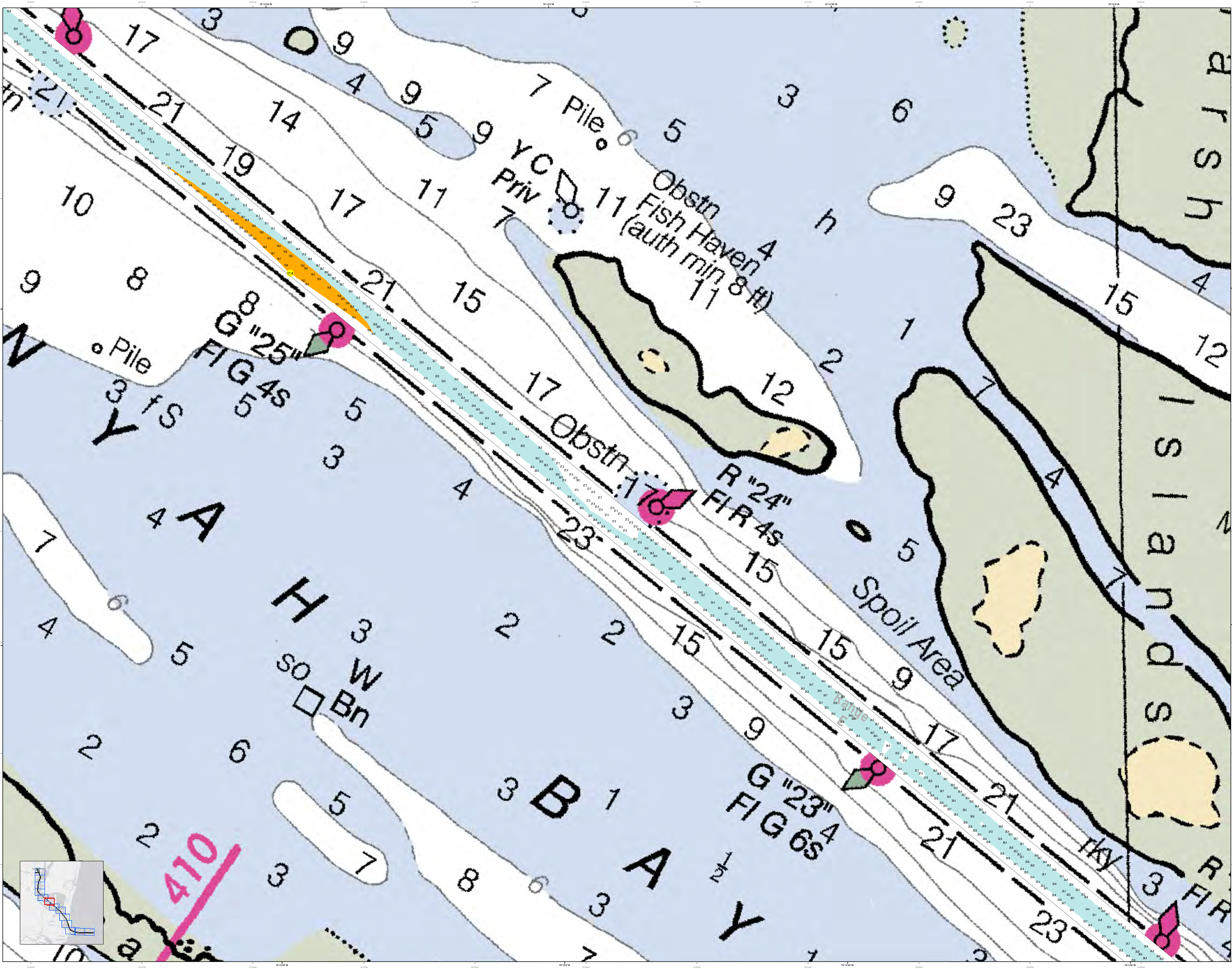
**Color Key:**  
1. Spoil Area (light blue hatched)  
2. Subm piles (dashed line)  
3. Pile (pink teardrop)  
4. Range (dashed line)  
5. Bearing (dashed line)  
6. ISO (dashed line)  
7. Spoil (dotted line)  
8. Range PA (dashed line)  
9. Pile PA (dashed line)

**Legend:**  
1. Spoil Area (light blue hatched)  
2. Subm piles (dashed line)  
3. Pile (pink teardrop)  
4. Range (dashed line)  
5. Bearing (dashed line)  
6. ISO (dashed line)  
7. Spoil (dotted line)  
8. Range PA (dashed line)  
9. Pile PA (dashed line)

Designed By: Jethro Software v3.82	Survey Date: 07 DEC 2015	Production Date: 07 JAN 2016
Reviewed By: T. S. 2010	Project Reference Number: 1000010	Project Reference Number: 1000010
Scale: 1 inch = 250 feet	Scale: 1 inch = 250 feet	Scale: 1 inch = 250 feet
Projection: NAD 1983 StatePlane South Carolina FIPS 3800 Feet	Projection: NAD 1983 StatePlane South Carolina FIPS 3800 Feet	Projection: NAD 1983 StatePlane South Carolina FIPS 3800 Feet

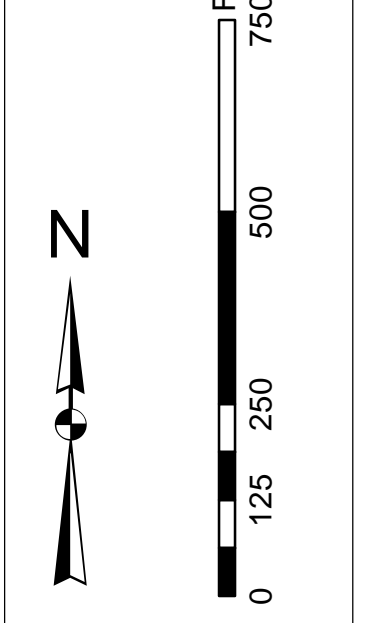
**Georgetown Harbor Channel Survey**  
The information depicted on this map represents the results of surveys made on the dates indicated and can only be considered as indicating the general character of the bottom. It is not to be used for navigation.  
Concluded on: DATE  
Georgetown, South Carolina





In this project, the U.S. Army Corps of Engineers, Charleston District Office, Special Data Branch has made this project, 'Georgetown Harbor Channel Survey', available to the public. This project is a navigational aid and is not intended to be used for any other purpose. The information on this map is for informational purposes only and is not intended to be used for any other purpose. The information on this map is for informational purposes only and is not intended to be used for any other purpose. The information on this map is for informational purposes only and is not intended to be used for any other purpose.

Projections:  
1. The information on this map is for informational purposes only and is not intended to be used for any other purpose.  
2. The information on this map is for informational purposes only and is not intended to be used for any other purpose.  
3. The information on this map is for informational purposes only and is not intended to be used for any other purpose.

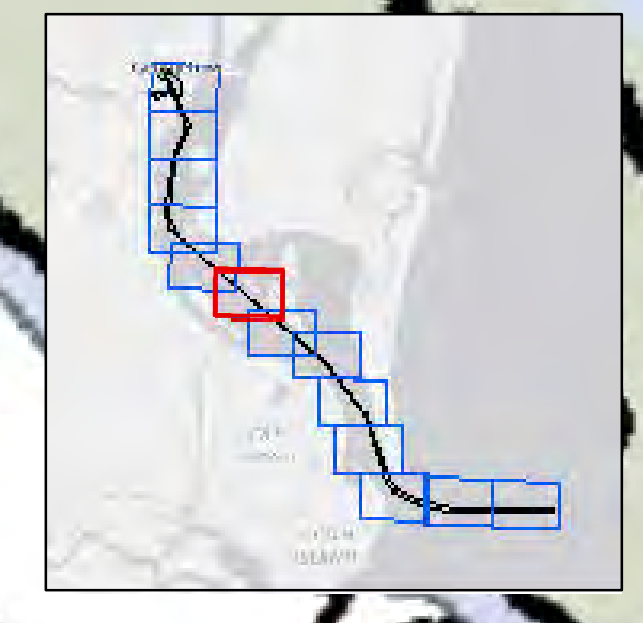


Legend:  
Obstruction:  
Obstruction (auth min 8-ft)  
Obstruction (auth min 10-ft)  
Obstruction (auth min 12-ft)  
Obstruction (auth min 15-ft)  
Obstruction (auth min 20-ft)  
Obstruction (auth min 25-ft)  
Obstruction (auth min 30-ft)  
Obstruction (auth min 35-ft)  
Obstruction (auth min 40-ft)  
Obstruction (auth min 45-ft)  
Obstruction (auth min 50-ft)  
Obstruction (auth min 55-ft)  
Obstruction (auth min 60-ft)  
Obstruction (auth min 65-ft)  
Obstruction (auth min 70-ft)  
Obstruction (auth min 75-ft)  
Obstruction (auth min 80-ft)  
Obstruction (auth min 85-ft)  
Obstruction (auth min 90-ft)  
Obstruction (auth min 95-ft)  
Obstruction (auth min 100-ft)

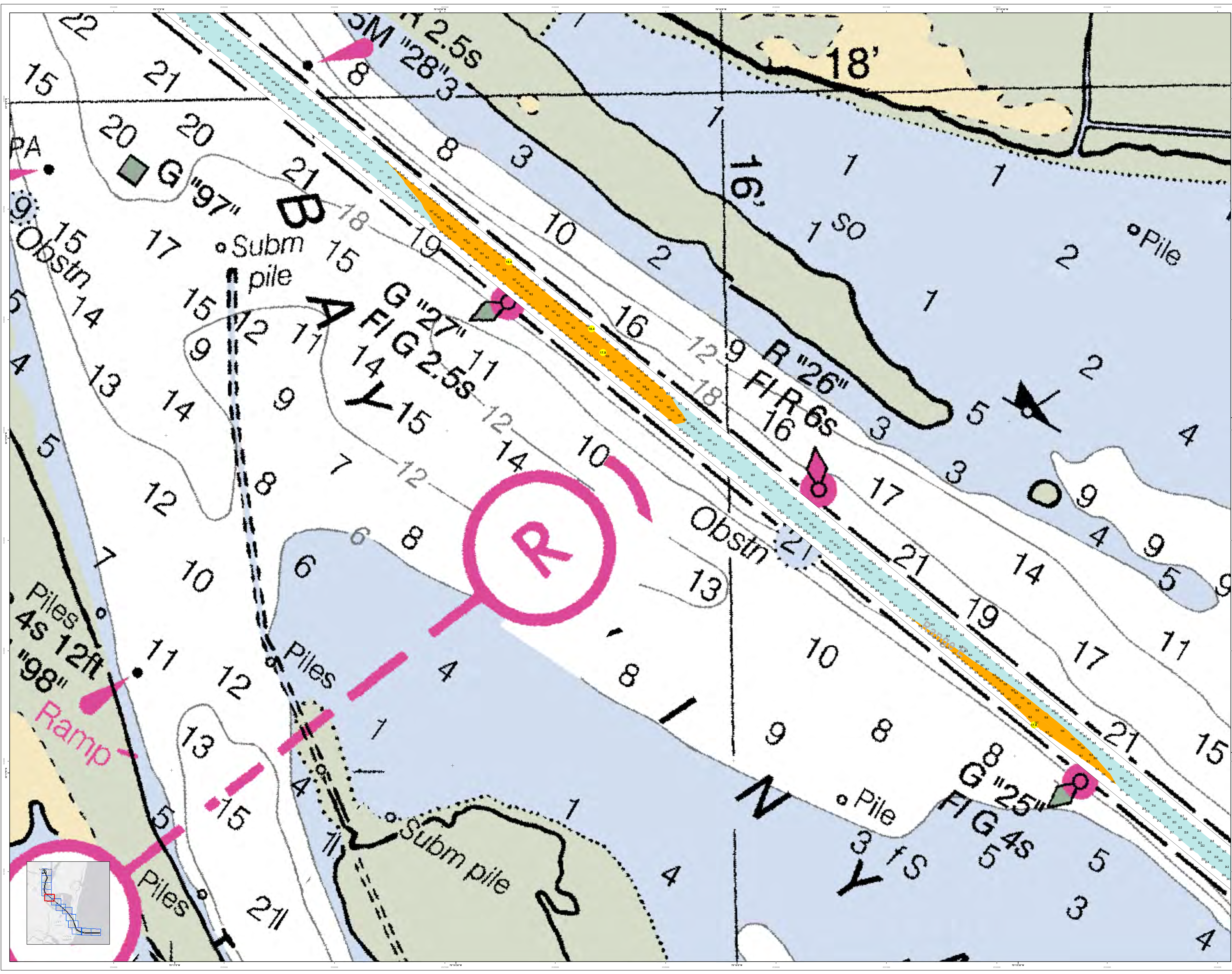
Legend:  
Spoil Area  
Spoil Area (auth min 8-ft)  
Spoil Area (auth min 10-ft)  
Spoil Area (auth min 12-ft)  
Spoil Area (auth min 15-ft)  
Spoil Area (auth min 20-ft)  
Spoil Area (auth min 25-ft)  
Spoil Area (auth min 30-ft)  
Spoil Area (auth min 35-ft)  
Spoil Area (auth min 40-ft)  
Spoil Area (auth min 45-ft)  
Spoil Area (auth min 50-ft)  
Spoil Area (auth min 55-ft)  
Spoil Area (auth min 60-ft)  
Spoil Area (auth min 65-ft)  
Spoil Area (auth min 70-ft)  
Spoil Area (auth min 75-ft)  
Spoil Area (auth min 80-ft)  
Spoil Area (auth min 85-ft)  
Spoil Area (auth min 90-ft)  
Spoil Area (auth min 95-ft)  
Spoil Area (auth min 100-ft)

U.S. Army Corps of Engineers Charleston District Office Special Data Branch Charleston, SC 29403 CESAC-GIS/USACE.ARMY.MIL	Designed By: Hydro Software v3.82	Survey Date: 07 DEC 2015	Production Date: 07 JAN 2016
Reviewed By: 1:50,000	Reference Scale: 1 inch = 250 feet	Project Reference Number: PDC001D	Survey Scale: Condition
Projection: NAD 1983 StatePlane South Carolina FIPS 3900 Feet			

Georgetown Harbor Channel Survey  
The information depicted on this map represents the results of surveys made on the dates indicated and can only be considered as indicating the general character of the ground on which they were made.  
Concluded on: DATE  
Georgetown, South Carolina







U.S. Army Corps of Engineers  
Charleston District

In accordance with the U.S. Army Corps of Engineers, Charleston District Office, Special Data Branch he/she has provided, collected, and/or derived information for this chart. This information is provided for informational purposes only and does not constitute a warranty of any kind. The user assumes all liability for any use of this information. This information is provided for informational purposes only and does not constitute a warranty of any kind. The user assumes all liability for any use of this information.

Production Date: 07 DEC 2015  
Project Reference Number: 10000010  
Survey Type: Condition

Designed By: U.S. Army Corps of Engineers  
Reviewed By: Absolute Scale: 1:5000  
Reference Scale: 1 inch = 250 feet  
Projection: NAD 1983 StatePlane South Carolina FIPS 3900 Feet

U.S. Army Corps of Engineers  
Charleston District Office  
Savannah District Office  
Charleston, SC 29405

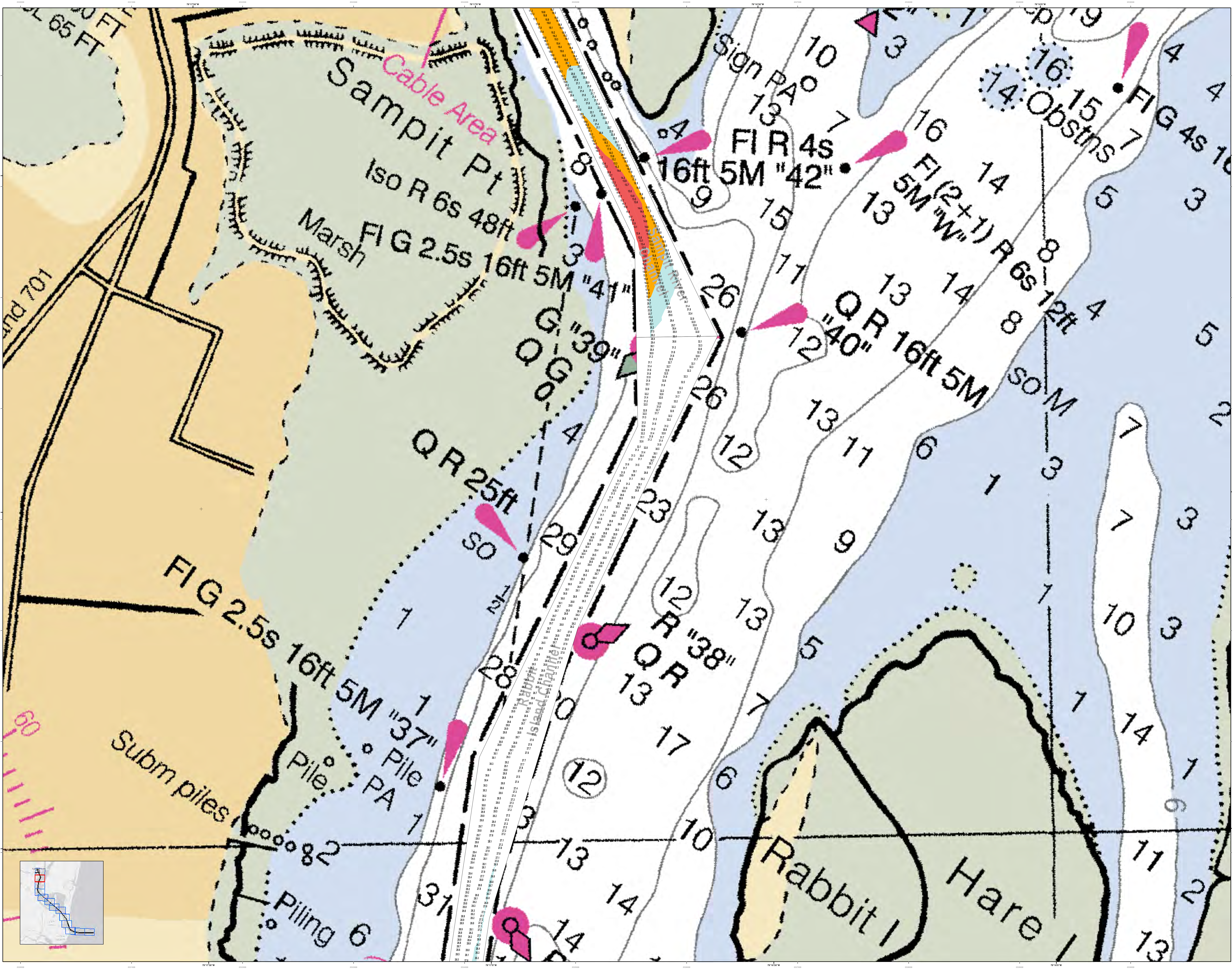
Georgetown Harbor Channel Survey  
The information depicted on this map represents the results of surveys made on the dates indicated and can only be considered as indicating the general character of the ground and water.

Concluded on: DATE  
Georgetown, South Carolina

SHEET REFERENCE NUMBER: C001  
SHEET 9 OF 13

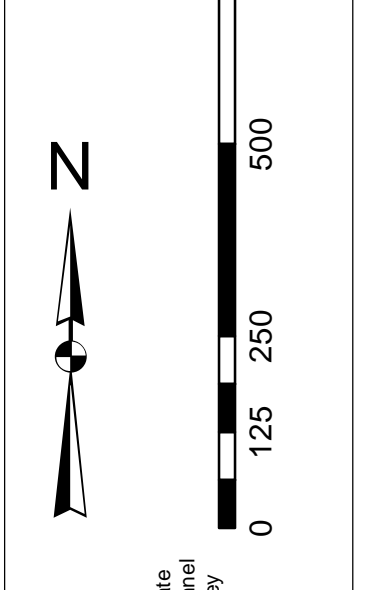






In accordance with the U.S. Army Corps of Engineers, Charleston District Office, Special Data Branch he/she has prepared, collected, and/or reviewed the information shown on this map. The information shown on this map is for general information only. It is not intended to be used for any other purpose without the express approval of the District Office. The information shown on this map is not to be used for any other purpose without the express approval of the District Office.

Vertical Datum: Mean Lower Low Water (MLLW)  
Horizontal Datum: North Carolina State Plane (NAD 83)



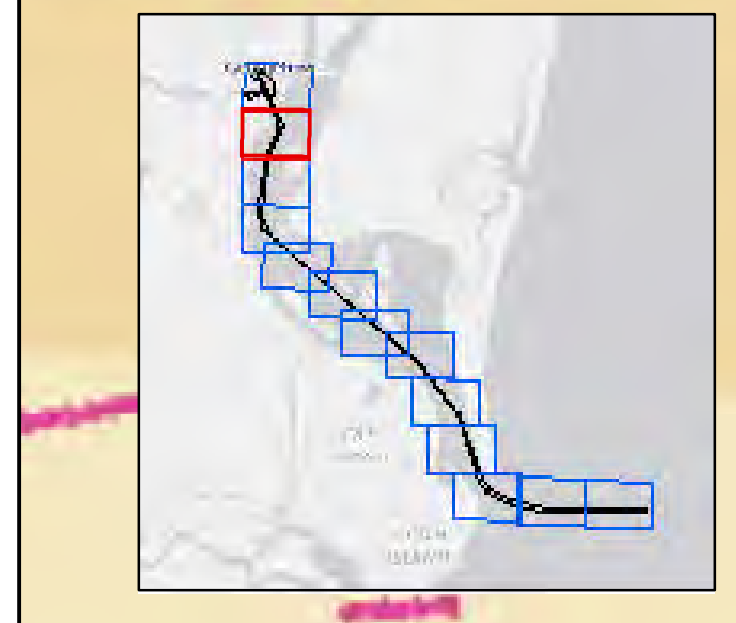
Legend

Color	Symbol	Description
Blue	Circle	Obstns
Red	Circle	Light
Yellow	Circle	Light
Green	Circle	Light
Pink	Circle	Light
Orange	Circle	Light
White	Circle	Light

U.S. Army Corps of Engineers  
Charleston District Office  
Special Data Branch  
Charleston, South Carolina

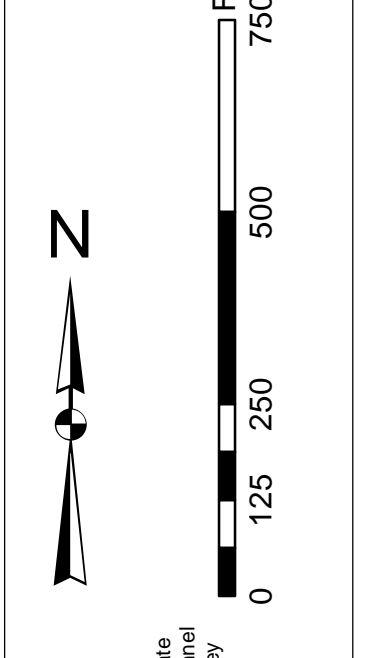
Designed By:	Survey Date:	Production Date:
Hydro Software v3.82	07 DEC 2015	07 JAN 2016
Reviewed By:	Project Reference Number:	
1:50,000	16020013	
Scale:	Scale:	Condition:
1 inch = 250 feet		
Projection:	NAD 1983 StatePlane South Carolina FIPS 3900 Feet	

Georgetown Harbor Channel Survey  
The information shown on this map represents the results of surveys made on the dates indicated and can only be considered as indicating the general location of the objects shown. It is not intended to be used for any other purpose without the express approval of the District Office.  
Concluded on: DATE  
Georgetown, South Carolina



In accordance with the U.S. Army Corps of Engineers, Charleston District Office, Special Districts Branch, the information depicted on this map represents the results of surveys made on the dates indicated and can only be considered as indicating the general location of the structures and features shown. It is not intended to be used for any other purpose. The information is provided for informational purposes only and is not intended to be used for any other purpose. The information is provided for informational purposes only and is not intended to be used for any other purpose.

Projections Note:  
1. This map is projected to the North American Datum of 1983 (NAD 83).  
2. The horizontal coordinates are in feet.  
3. The vertical coordinates are in feet above mean sea level (AMSL).  
4. The datum used is the Mean Sea Level (MSL).  
5. The datum used is the Mean Sea Level (MSL).  
6. The datum used is the Mean Sea Level (MSL).  
7. The datum used is the Mean Sea Level (MSL).  
8. The datum used is the Mean Sea Level (MSL).  
9. The datum used is the Mean Sea Level (MSL).  
10. The datum used is the Mean Sea Level (MSL).



Legend

- Water
- Land
- Structure
- Obstruction
- Survey Point
- Reference Point
- Channel
- Basin
- Area
- Line
- Point
- Symbol
- Color
- Text
- Line Style
- Symbol Style
- Color Style
- Text Style
- Line Style
- Symbol Style
- Color Style
- Text Style

Designed By: U.S. Army Corps of Engineers, Charleston District Office, Special Districts Branch, Savannah District, Charleston, SC 29403  
Reviewed By: U.S. Army Corps of Engineers, Charleston District Office, Special Districts Branch, Savannah District, Charleston, SC 29403  
Scale: 1 inch = 250 feet  
Projection: NAD 1983 StatePlane South Carolina FIPS 3900 Feet

Survey Date: 07 DEC 2015  
Production Date: 07 JAN 2016  
Project Reference Number: 150300  
Sheet Number: C001  
Sheet Title: Georgetown Harbor Channel Survey

Georgetown Harbor Channel Survey  
The information depicted on this map represents the results of surveys made on the dates indicated and can only be considered as indicating the general location of the structures and features shown. It is not intended to be used for any other purpose. The information is provided for informational purposes only and is not intended to be used for any other purpose.

