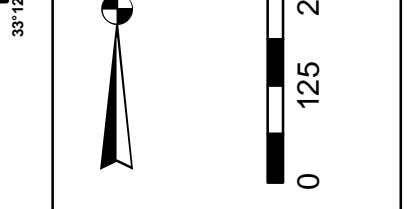
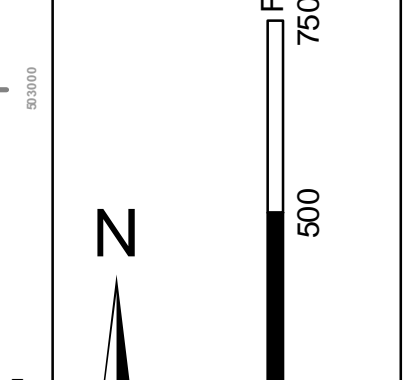
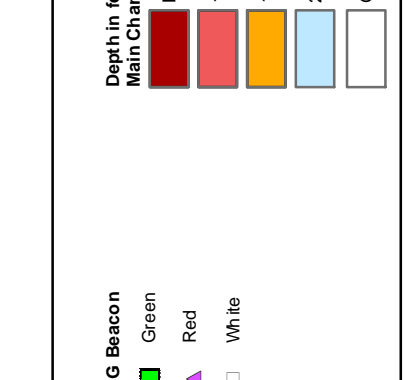


In accordance with the U.S. Army Corps of Engineers, Charleston District Office, Special Operations Branch, the data and information shown on this map were derived from a survey conducted in accordance with the requirements of the U.S. Army Corps of Engineers, Special Operations Branch, and the U.S. Army Corps of Engineers, Charleston District Office. The data and information shown on this map were derived from a survey conducted in accordance with the requirements of the U.S. Army Corps of Engineers, Special Operations Branch, and the U.S. Army Corps of Engineers, Charleston District Office. The data and information shown on this map were derived from a survey conducted in accordance with the requirements of the U.S. Army Corps of Engineers, Special Operations Branch, and the U.S. Army Corps of Engineers, Charleston District Office.

Production Notes:
1. This map was produced using the HydroCAD software.
2. The data and information shown on this map were derived from a survey conducted in accordance with the requirements of the U.S. Army Corps of Engineers, Special Operations Branch, and the U.S. Army Corps of Engineers, Charleston District Office.
3. The data and information shown on this map were derived from a survey conducted in accordance with the requirements of the U.S. Army Corps of Engineers, Special Operations Branch, and the U.S. Army Corps of Engineers, Charleston District Office.



Depth Contour Note:
1. Contour interval of 1 foot.
2. Contours are shown in feet above and below the datum.
3. Contours are shown in feet above and below the datum.

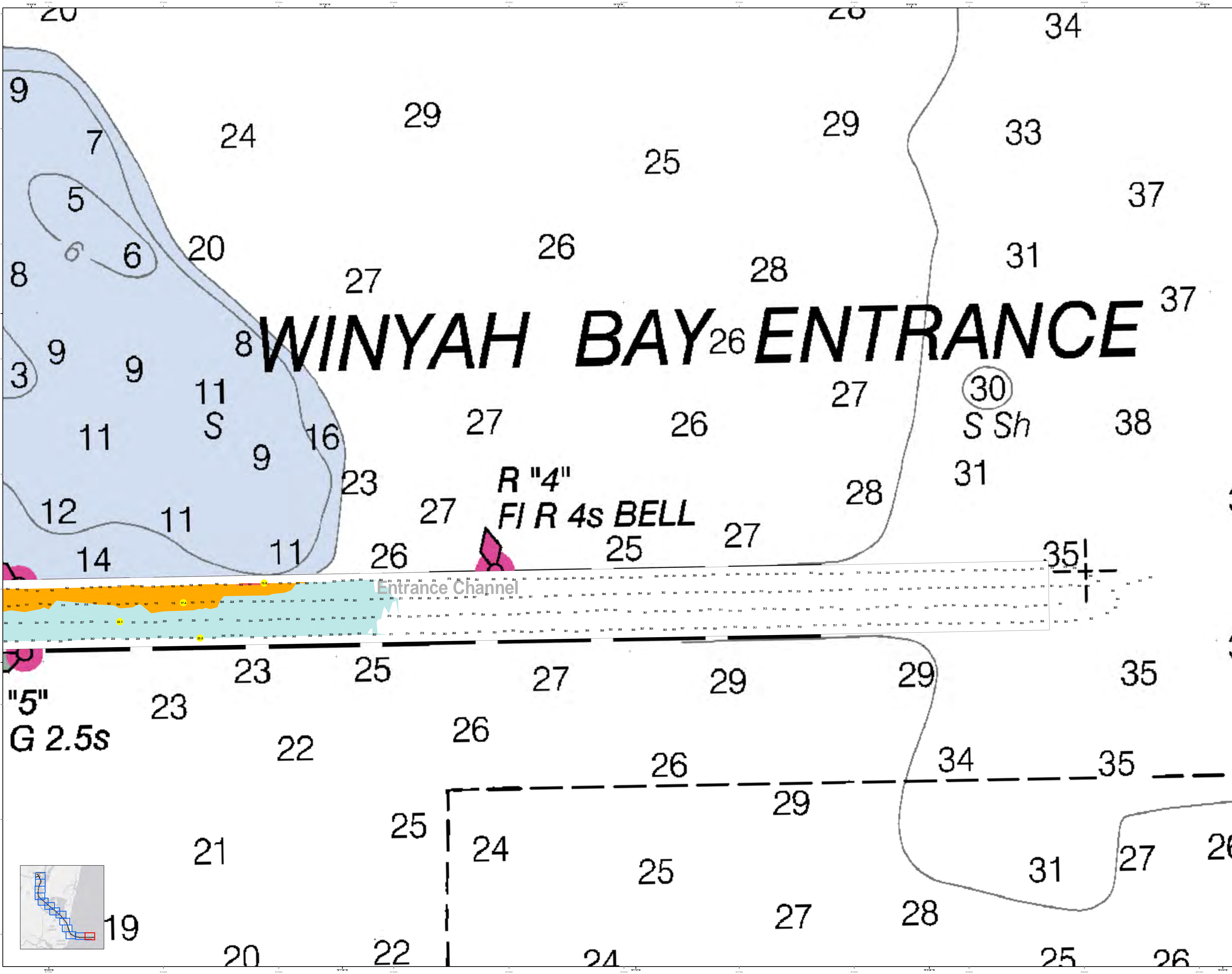


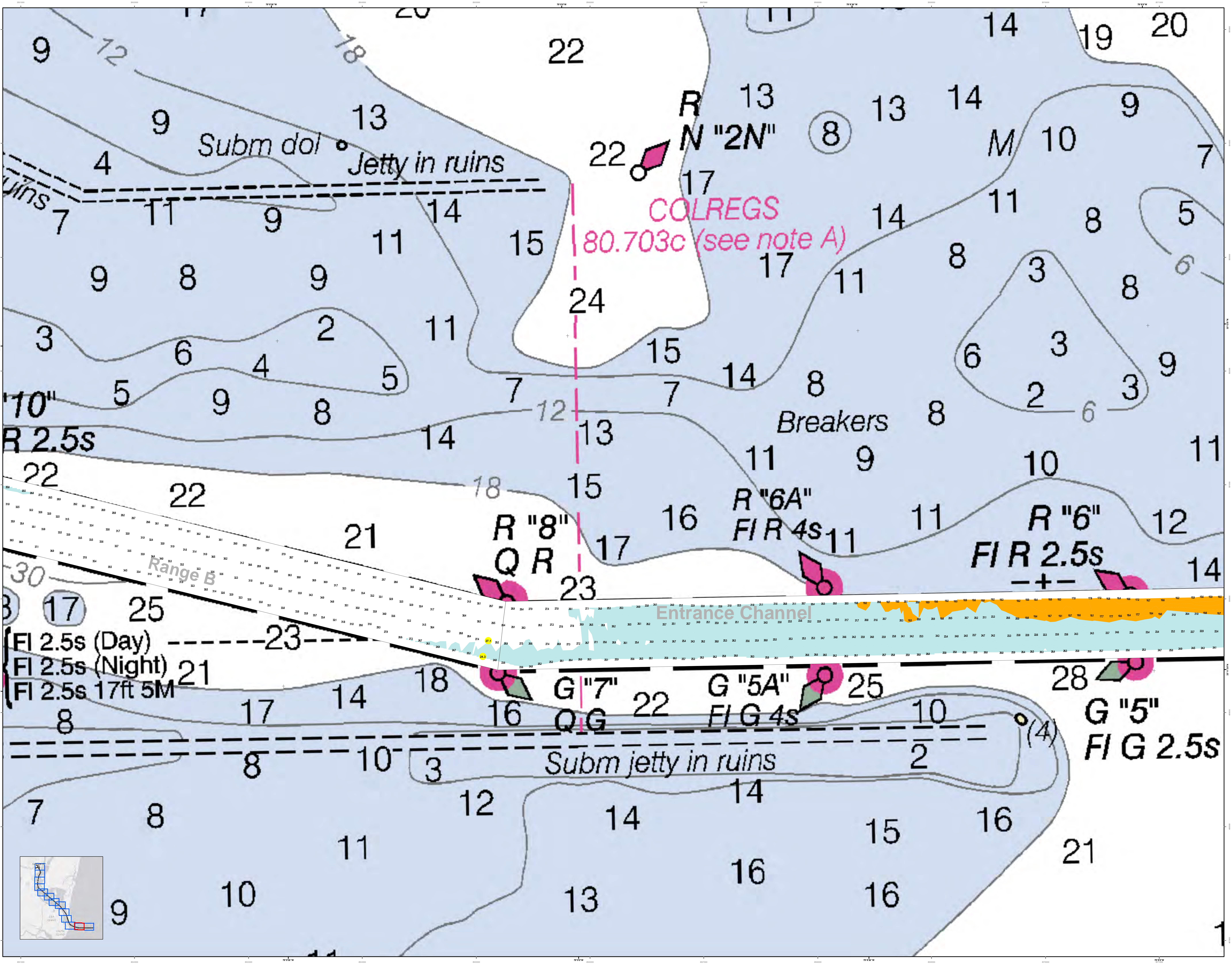
Legend:
Shaded Area: Entrance Channel
Dashed Line: Boundary
Symbol: Light
Symbol: Buoy
Symbol: Beacon
Symbol: Spar Light
Symbol: Daymark
Symbol: Nightmark
Symbol: Daymark
Symbol: Nightmark
Symbol: Daymark
Symbol: Nightmark

Designed By:	HydroCAD Software v3.02	Production Date:	03 15 2016
Reviewed By:	1:25,000	Project Reference Number:	10000010
Reference Scale:	1 inch = 242 feet	Survey Type:	CONDITION
Projection:	NAD 1983 StatePlane South Carolina FIPS 3200 Feet		

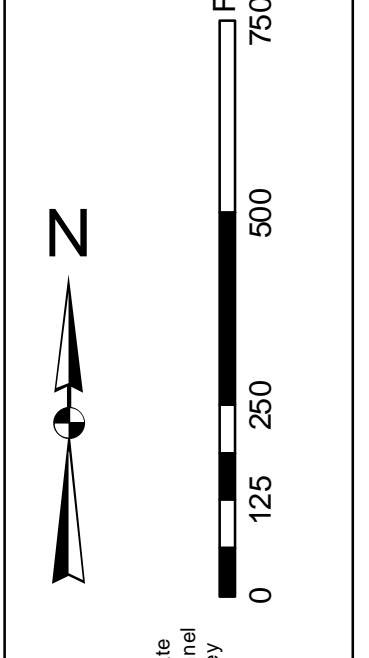
U.S. Army Corps of Engineers Charleston District Office Special Operations Branch 300 Hagood Ave Charleston, SC 29405	CESAC-GIBRICE ARMYVIL
---	-----------------------

Georgetown Harbor Channel Survey
The information depicted on this map represents the results of surveys made on the dates indicated and can only be considered as indicating the general character of the channel and shoals.
Concluded on: 03 15 2016
Georgetown, South Carolina





Production Note:
This chart was produced by the U.S. Army Corps of Engineers, Charleston District Office. It is based on the latest available hydrographic data and other information available to the District Office. It is subject to change without notice. The user is encouraged to use all prudent safety measures.



Legend:

	Buoy
	Light
	Breaker
	Submerged Obstacle
	Jetty
	Range
	Lighted Buoy
	Lighted Buoy with Flash
	Lighted Buoy with Morse Code
	Lighted Buoy with Morse Code and Flash
	Lighted Buoy with Morse Code and Flash and Daymark
	Lighted Buoy with Morse Code and Flash and Daymark and Flash

Designed By:	Jeffery S. Williams
Reviewed By:	John W. Williams
Scale:	1 inch = 242 feet
Projection:	NAD 1983 StatePlane South Carolina FIPS 3800 Feet
Produced By:	John W. Williams
Production Date:	03 15 2016
Project Reference Number:	1603001D
Survey Type:	CONDITION

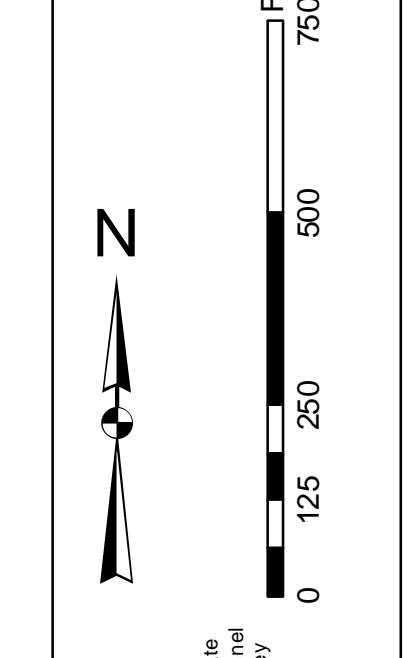
Georgetown Harbor Channel Survey
The information depicted on this map represents the results of surveys made on the dates indicated and can only be considered as indicating the general character of the channel and shoals.
Concluded on: 03 15 2016
Georgetown, South Carolina

In accordance with the U.S. Army Corps of Engineers, Charleston District Office, Special Operations Unit, the information depicted on this map represents the results of surveys made on the areas indicated and can only be considered as indicating the general location of the objects shown. It is not intended to be used for navigation. Mariners are encouraged to use all prudent safety measures.

Project Name:
Georgetown Harbor Channel Survey

Scale:
1 inch = 242 feet

Projection:
NAD 1983 StatePlane South Carolina FIPS 3200 Feet



Legend:

- Water Depth: 0 to 10, 10 to 20, 20 to 30, 30 to 40, 40 to 50, 50 to 60, 60 to 70, 70 to 80, 80 to 90, 90 to 100, 100 to 110, 110 to 120, 120 to 130, 130 to 140, 140 to 150, 150 to 160, 160 to 170, 170 to 180, 180 to 190, 190 to 200, 200 to 210, 210 to 220, 220 to 230, 230 to 240, 240 to 250, 250 to 260, 260 to 270, 270 to 280, 280 to 290, 290 to 300, 300 to 310, 310 to 320, 320 to 330, 330 to 340, 340 to 350, 350 to 360, 360 to 370, 370 to 380, 380 to 390, 390 to 400, 400 to 410, 410 to 420, 420 to 430, 430 to 440, 440 to 450, 450 to 460, 460 to 470, 470 to 480, 480 to 490, 490 to 500, 500 to 510, 510 to 520, 520 to 530, 530 to 540, 540 to 550, 550 to 560, 560 to 570, 570 to 580, 580 to 590, 590 to 600, 600 to 610, 610 to 620, 620 to 630, 630 to 640, 640 to 650, 650 to 660, 660 to 670, 670 to 680, 680 to 690, 690 to 700, 700 to 710, 710 to 720, 720 to 730, 730 to 740, 740 to 750, 750 to 760, 760 to 770, 770 to 780, 780 to 790, 790 to 800, 800 to 810, 810 to 820, 820 to 830, 830 to 840, 840 to 850, 850 to 860, 860 to 870, 870 to 880, 880 to 890, 890 to 900, 900 to 910, 910 to 920, 920 to 930, 930 to 940, 940 to 950, 950 to 960, 960 to 970, 970 to 980, 980 to 990, 990 to 1000
- Obstructions: Pile, Snag, Jetty in ruins, etc.
- Range Lines: Range A, Range B, Range C
- Markers: Iso G, Q G, R, etc.

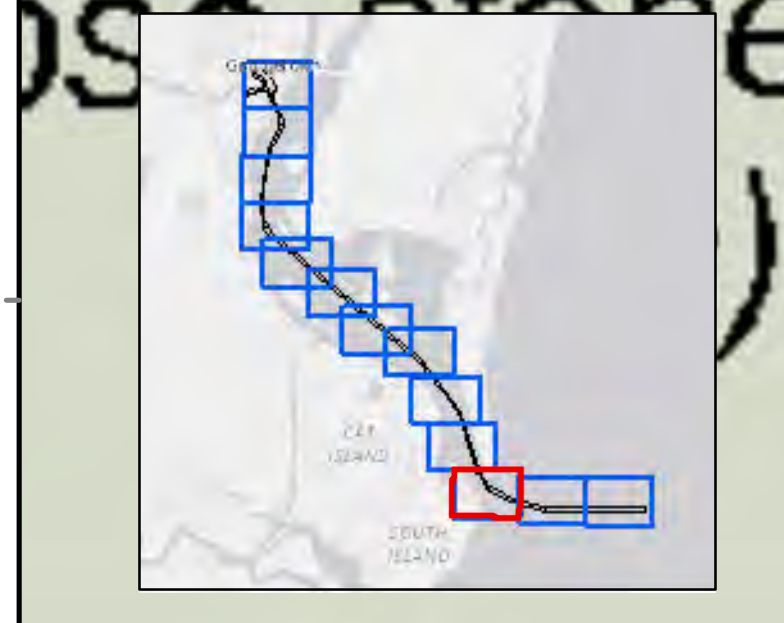
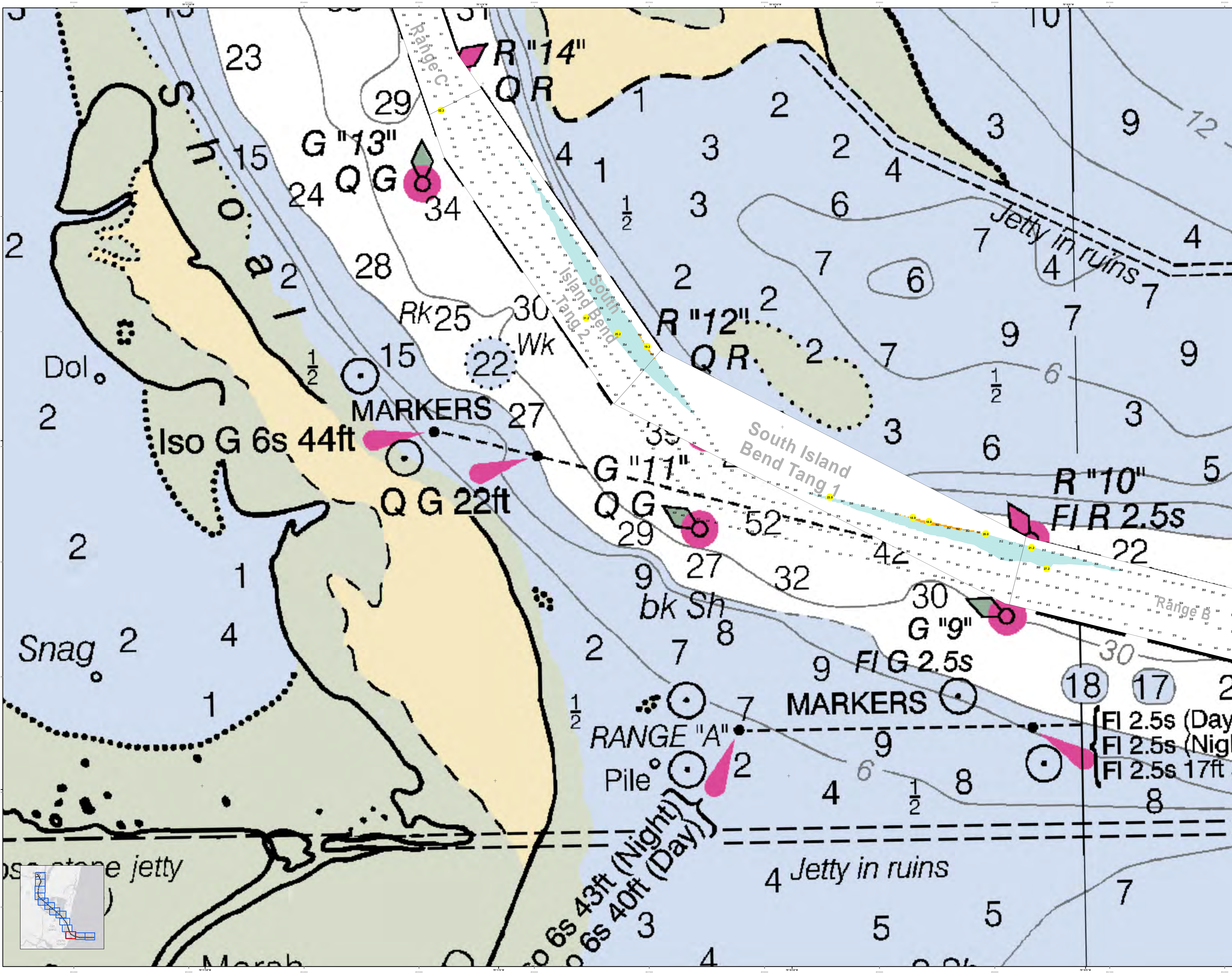
Project Information:

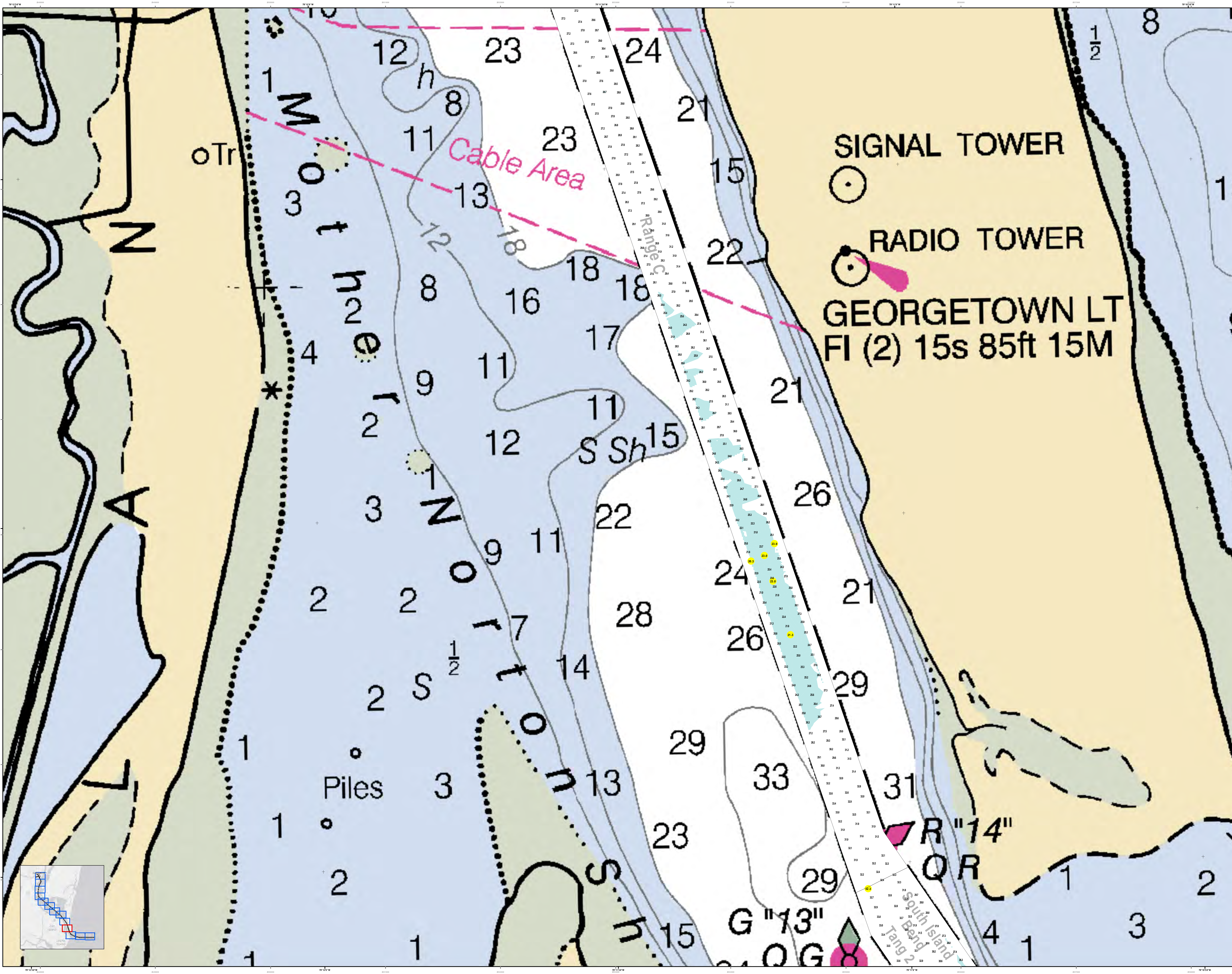
Designed By:	Jeffery Software v3.02
Reviewed By:	1:2500
Reference Scale:	1 inch = 242 feet
Projection:	NAD 1983 StatePlane South Carolina FIPS 3200 Feet

Production Date: 03 15 2016
Production Number: 1000010
Survey Date: 03 15 2016
Survey Type: CONDITION

Georgetown Harbor Channel Survey
 The information depicted on this map represents the results of surveys made on the areas indicated and can only be considered as indicating the general location of the objects shown. It is not intended to be used for navigation. Mariners are encouraged to use all prudent safety measures.
 Concluded on: 03 15 2016
 Georgetown, South Carolina

SHEET REFERENCE NUMBER:
 C001
 SHEET 3 OF 13



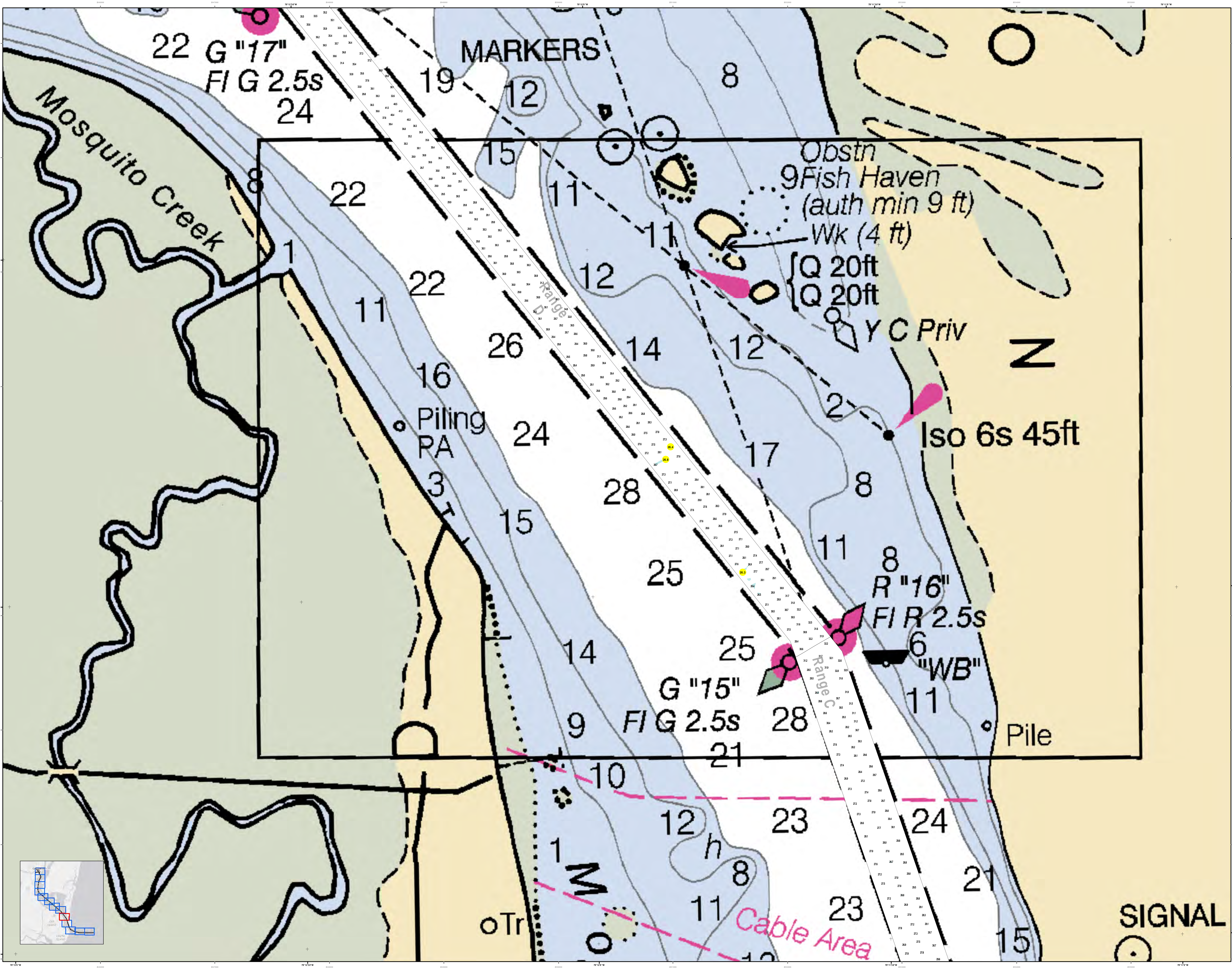


Legend

- Water Depth: 0-5, 6-10, 11-15, 16-20, 21-25, 26-30, 31-35, 36-40, 41-45, 46-50, 51-55, 56-60, 61-65, 66-70, 71-75, 76-80, 81-85, 86-90, 91-95, 96-100, 101-105, 106-110, 111-115, 116-120, 121-125, 126-130, 131-135, 136-140, 141-145, 146-150, 151-155, 156-160, 161-165, 166-170, 171-175, 176-180, 181-185, 186-190, 191-195, 196-200, 201-205, 206-210, 211-215, 216-220, 221-225, 226-230, 231-235, 236-240, 241-245, 246-250, 251-255, 256-260, 261-265, 266-270, 271-275, 276-280, 281-285, 286-290, 291-295, 296-300, 301-305, 306-310, 311-315, 316-320, 321-325, 326-330, 331-335, 336-340, 341-345, 346-350, 351-355, 356-360, 361-365, 366-370, 371-375, 376-380, 381-385, 386-390, 391-395, 396-400, 401-405, 406-410, 411-415, 416-420, 421-425, 426-430, 431-435, 436-440, 441-445, 446-450, 451-455, 456-460, 461-465, 466-470, 471-475, 476-480, 481-485, 486-490, 491-495, 496-500, 501-505, 506-510, 511-515, 516-520, 521-525, 526-530, 531-535, 536-540, 541-545, 546-550, 551-555, 556-560, 561-565, 566-570, 571-575, 576-580, 581-585, 586-590, 591-595, 596-600, 601-605, 606-610, 611-615, 616-620, 621-625, 626-630, 631-635, 636-640, 641-645, 646-650, 651-655, 656-660, 661-665, 666-670, 671-675, 676-680, 681-685, 686-690, 691-695, 696-700, 701-705, 706-710, 711-715, 716-720, 721-725, 726-730, 731-735, 736-740, 741-745, 746-750, 751-755, 756-760, 761-765, 766-770, 771-775, 776-780, 781-785, 786-790, 791-795, 796-800, 801-805, 806-810, 811-815, 816-820, 821-825, 826-830, 831-835, 836-840, 841-845, 846-850, 851-855, 856-860, 861-865, 866-870, 871-875, 876-880, 881-885, 886-890, 891-895, 896-900, 901-905, 906-910, 911-915, 916-920, 921-925, 926-930, 931-935, 936-940, 941-945, 946-950, 951-955, 956-960, 961-965, 966-970, 971-975, 976-980, 981-985, 986-990, 991-995, 996-1000
- Water Area: Yellow, Light Blue, Dark Blue
- Obstructions: Red, Black, White, Green
- Other: Dotted lines, Stars, Circles

Designed By: Jethro Software v3.02	Survey Date: 03 15 2016	Production Date: 03 18 2016
Reviewed By: ANGLAS Scale: 1:2500	Project Reference Number: 1303001D	
Reference Scale: 1 inch = 242 feet	Survey Type: CONDTION	
Projection: NAD 1983 StatePlane South Carolina FIPS 3800 Feet		

Georgetown Harbor Channel Survey
The information depicted on this map represents the results of surveys made on the dates indicated and can only be considered as indicating the general character of the survey data.
Concluded on: 03 15 2016
Georgetown, South Carolina



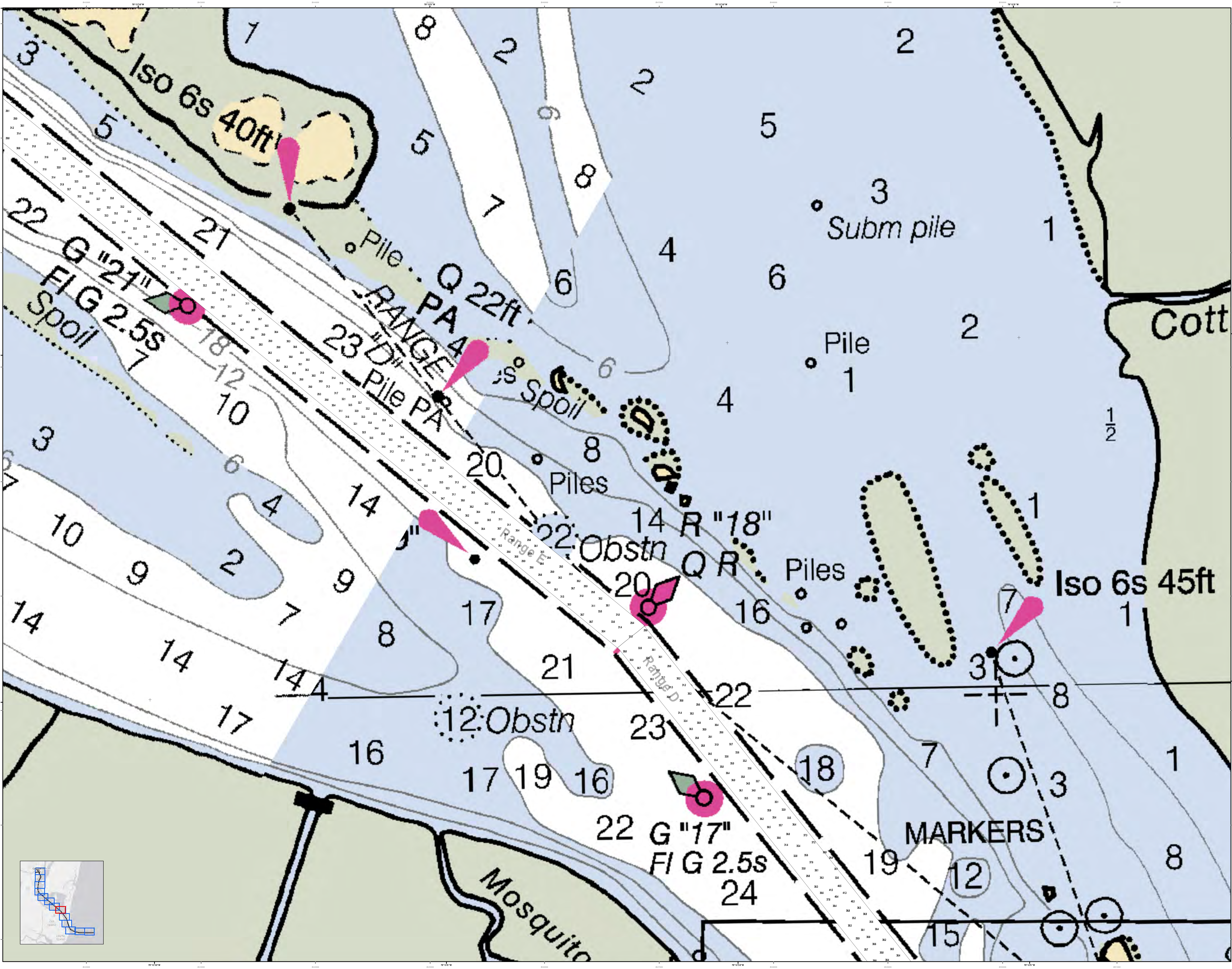
Production Date: 03 15 2016
Project Reference Number: 1604001D
Survey Type: CONDITION

Designed By: Jethro Software v3.02
Reviewed By: ANGLAS SCALE
Reference Scale: 1:2500
Projection: NAD 1983 StatePlane South Carolina FIPS 3800 Feet

U.S. Army Corps of Engineers District of Engineers
 CHARLESTON DISTRICT
 601 HANCOCK AVE
 CHARLESTON, SC 29405
 CESAC/GRACE ARMYVIL

Georgetown Harbor Channel Survey
 The information depicted on this map represents the results of surveys made on the dates indicated and can only be considered as indicating the general character of the bottom. It is not to be used for navigation.
 Concluded on: 03 15 2016
 Georgetown, South Carolina

Legend:
 Depth Soundings: 1, 2, 3, 4, 5, 6, 7, 8, 9, 10, 11, 12, 13, 14, 15, 16, 17, 18, 19, 20, 21, 22, 23, 24, 25, 26, 27, 28, 29, 30, 31, 32, 33, 34, 35, 36, 37, 38, 39, 40, 41, 42, 43, 44, 45, 46, 47, 48, 49, 50, 51, 52, 53, 54, 55, 56, 57, 58, 59, 60, 61, 62, 63, 64, 65, 66, 67, 68, 69, 70, 71, 72, 73, 74, 75, 76, 77, 78, 79, 80, 81, 82, 83, 84, 85, 86, 87, 88, 89, 90, 91, 92, 93, 94, 95, 96, 97, 98, 99, 100, 101, 102, 103, 104, 105, 106, 107, 108, 109, 110, 111, 112, 113, 114, 115, 116, 117, 118, 119, 120, 121, 122, 123, 124, 125, 126, 127, 128, 129, 130, 131, 132, 133, 134, 135, 136, 137, 138, 139, 140, 141, 142, 143, 144, 145, 146, 147, 148, 149, 150, 151, 152, 153, 154, 155, 156, 157, 158, 159, 160, 161, 162, 163, 164, 165, 166, 167, 168, 169, 170, 171, 172, 173, 174, 175, 176, 177, 178, 179, 180, 181, 182, 183, 184, 185, 186, 187, 188, 189, 190, 191, 192, 193, 194, 195, 196, 197, 198, 199, 200, 201, 202, 203, 204, 205, 206, 207, 208, 209, 210, 211, 212, 213, 214, 215, 216, 217, 218, 219, 220, 221, 222, 223, 224, 225, 226, 227, 228, 229, 230, 231, 232, 233, 234, 235, 236, 237, 238, 239, 240, 241, 242, 243, 244, 245, 246, 247, 248, 249, 250, 251, 252, 253, 254, 255, 256, 257, 258, 259, 260, 261, 262, 263, 264, 265, 266, 267, 268, 269, 270, 271, 272, 273, 274, 275, 276, 277, 278, 279, 280, 281, 282, 283, 284, 285, 286, 287, 288, 289, 290, 291, 292, 293, 294, 295, 296, 297, 298, 299, 300, 301, 302, 303, 304, 305, 306, 307, 308, 309, 310, 311, 312, 313, 314, 315, 316, 317, 318, 319, 320, 321, 322, 323, 324, 325, 326, 327, 328, 329, 330, 331, 332, 333, 334, 335, 336, 337, 338, 339, 340, 341, 342, 343, 344, 345, 346, 347, 348, 349, 350, 351, 352, 353, 354, 355, 356, 357, 358, 359, 360, 361, 362, 363, 364, 365, 366, 367, 368, 369, 370, 371, 372, 373, 374, 375, 376, 377, 378, 379, 380, 381, 382, 383, 384, 385, 386, 387, 388, 389, 390, 391, 392, 393, 394, 395, 396, 397, 398, 399, 400, 401, 402, 403, 404, 405, 406, 407, 408, 409, 410, 411, 412, 413, 414, 415, 416, 417, 418, 419, 420, 421, 422, 423, 424, 425, 426, 427, 428, 429, 430, 431, 432, 433, 434, 435, 436, 437, 438, 439, 440, 441, 442, 443, 444, 445, 446, 447, 448, 449, 450, 451, 452, 453, 454, 455, 456, 457, 458, 459, 460, 461, 462, 463, 464, 465, 466, 467, 468, 469, 470, 471, 472, 473, 474, 475, 476, 477, 478, 479, 480, 481, 482, 483, 484, 485, 486, 487, 488, 489, 490, 491, 492, 493, 494, 495, 496, 497, 498, 499, 500, 501, 502, 503, 504, 505, 506, 507, 508, 509, 510, 511, 512, 513, 514, 515, 516, 517, 518, 519, 520, 521, 522, 523, 524, 525, 526, 527, 528, 529, 530, 531, 532, 533, 534, 535, 536, 537, 538, 539, 540, 541, 542, 543, 544, 545, 546, 547, 548, 549, 550, 551, 552, 553, 554, 555, 556, 557, 558, 559, 560, 561, 562, 563, 564, 565, 566, 567, 568, 569, 570, 571, 572, 573, 574, 575, 576, 577, 578, 579, 580, 581, 582, 583, 584, 585, 586, 587, 588, 589, 590, 591, 592, 593, 594, 595, 596, 597, 598, 599, 600, 601, 602, 603, 604, 605, 606, 607, 608, 609, 610, 611, 612, 613, 614, 615, 616, 617, 618, 619, 620, 621, 622, 623, 624, 625, 626, 627, 628, 629, 630, 631, 632, 633, 634, 635, 636, 637, 638, 639, 640, 641, 642, 643, 644, 645, 646, 647, 648, 649, 650, 651, 652, 653, 654, 655, 656, 657, 658, 659, 660, 661, 662, 663, 664, 665, 666, 667, 668, 669, 670, 671, 672, 673, 674, 675, 676, 677, 678, 679, 680, 681, 682, 683, 684, 685, 686, 687, 688, 689, 690, 691, 692, 693, 694, 695, 696, 697, 698, 699, 700, 701, 702, 703, 704, 705, 706, 707, 708, 709, 710, 711, 712, 713, 714, 715, 716, 717, 718, 719, 720, 721, 722, 723, 724, 725, 726, 727, 728, 729, 730, 731, 732, 733, 734, 735, 736, 737, 738, 739, 740, 741, 742, 743, 744, 745, 746, 747, 748, 749, 750, 751, 752, 753, 754, 755, 756, 757, 758, 759, 760, 761, 762, 763, 764, 765, 766, 767, 768, 769, 770, 771, 772, 773, 774, 775, 776, 777, 778, 779, 780, 781, 782, 783, 784, 785, 786, 787, 788, 789, 790, 791, 792, 793, 794, 795, 796, 797, 798, 799, 800, 801, 802, 803, 804, 805, 806, 807, 808, 809, 810, 811, 812, 813, 814, 815, 816, 817, 818, 819, 820, 821, 822, 823, 824, 825, 826, 827, 828, 829, 830, 831, 832, 833, 834, 835, 836, 837, 838, 839, 840, 841, 842, 843, 844, 845, 846, 847, 848, 849, 850, 851, 852, 853, 854, 855, 856, 857, 858, 859, 860, 861, 862, 863, 864, 865, 866, 867, 868, 869, 870, 871, 872, 873, 874, 875, 876, 877, 878, 879, 880, 881, 882, 883, 884, 885, 886, 887, 888, 889, 890, 891, 892, 893, 894, 895, 896, 897, 898, 899, 900, 901, 902, 903, 904, 905, 906, 907, 908, 909, 910, 911, 912, 913, 914, 915, 916, 917, 918, 919, 920, 921, 922, 923, 924, 925, 926, 927, 928, 929, 930, 931, 932, 933, 934, 935, 936, 937, 938, 939, 940, 941, 942, 943, 944, 945, 946, 947, 948, 949, 950, 951, 952, 953, 954, 955, 956, 957, 958, 959, 960, 961, 962, 963, 964, 965, 966, 967, 968, 969, 970, 971, 972, 973, 974, 975, 976, 977, 978, 979, 980, 981, 982, 983, 984, 985, 986, 987, 988, 989, 990, 991, 992, 993, 994, 995, 996, 997, 998, 999, 1000



U.S. Army Corps of Engineers
Charleston District

Georgetown Harbor Channel Survey
The information depicted on this map represents the results of surveys made on the dates indicated and can only be considered as indicating the general location of objects. It is not to be used for navigation. Concluded on: 03 15 2016
Georgetown, South Carolina

Legend

- Water Depth: 1 to 24 fathoms
- Obstruction: 12:Obstn, 20:Obstn
- Range Line: Range A, Range B
- Marker: 22 G "17" FIG 2.5s, 22 G "21" FIG 2.5s, 22 G "18" FIG 2.5s
- Pile: Pile PA, Pile Q, Pile R
- Subm pile
- Mosquito
- Cott

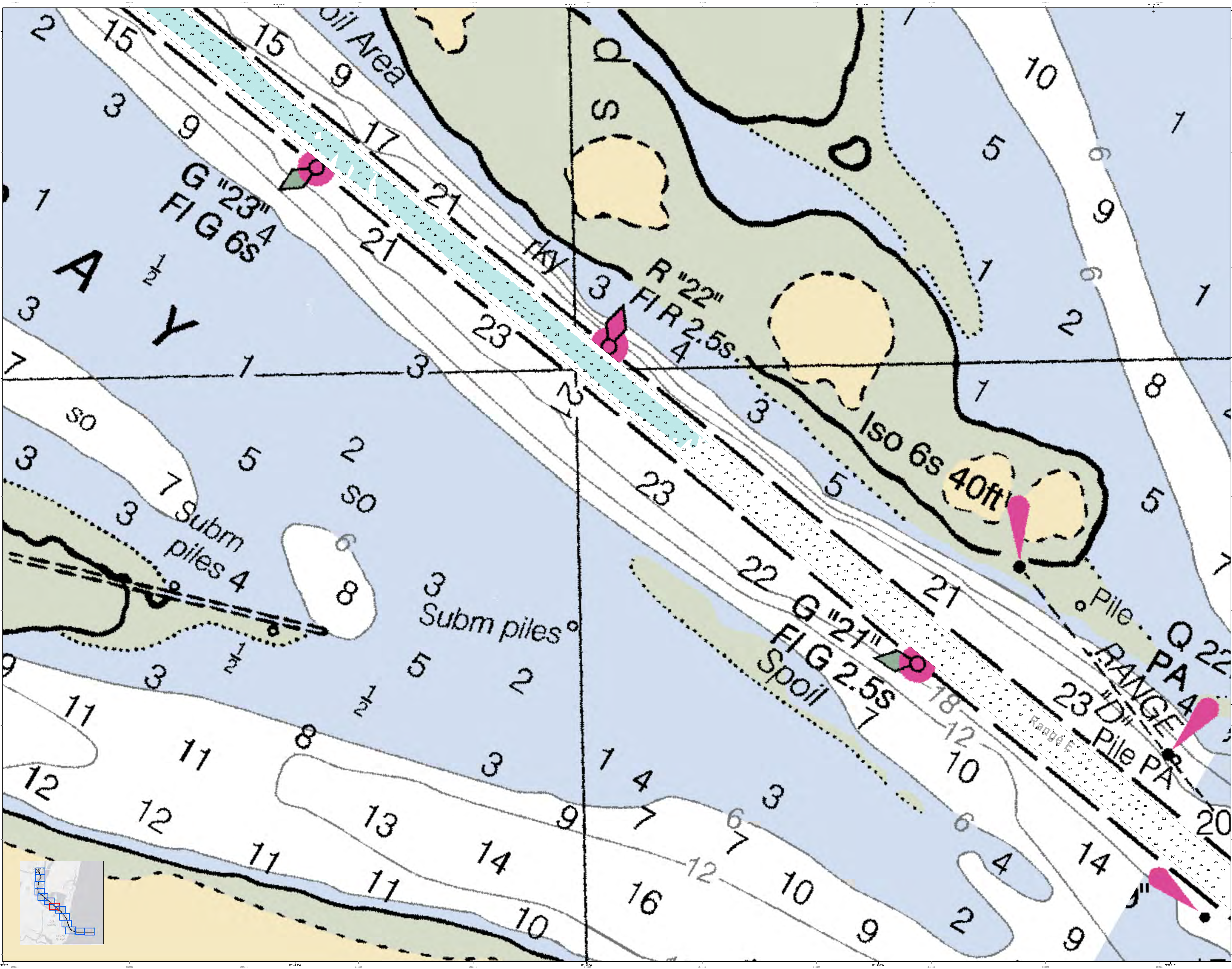
Scale: 1 inch = 242 feet

Production Date: 03 15 2016
Project Reference Number: 1603001D
Survey Type: CONDITION

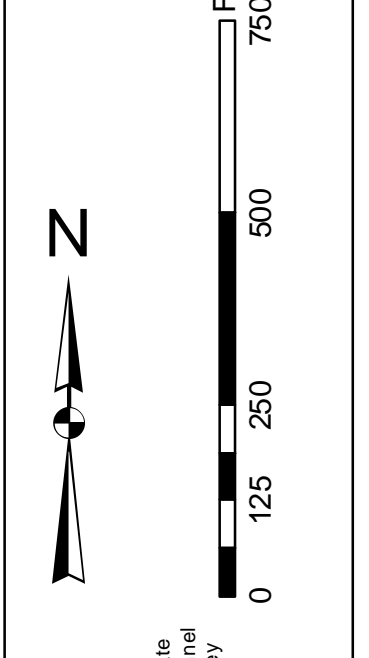
Designed By: Jeffrey Schwab v3.02
Reviewed By: 1.25.03
Reference Scale: 1 inch = 242 feet
Projection: NAD 1983 StatePlane South Carolina FIPS 3200 Feet

U.S. Army Corps of Engineers
CHARLESTON DISTRICT
SOUTH CAROLINA
SIGNAL DATA BRANCH
904 HARGOOD AVE
CHARLESTON, SC 29405
CESAC-GIBRICE ARMYVIL

SHEET REFERENCE NUMBER: C001
SHEET 6 OF 13



Disclaimer:
This survey was conducted by the U.S. Army Corps of Engineers, Charleston District Office. Special operations were conducted to provide a more accurate and complete survey of the channel. The information on this chart is based on the most recent survey data available. The Corps of Engineers does not warrant the accuracy or completeness of the information on this chart. The user of this chart is advised to use it as a general guide only. The Corps of Engineers is not responsible for any errors or omissions on this chart. The user of this chart is advised to use it as a general guide only.



Legend:

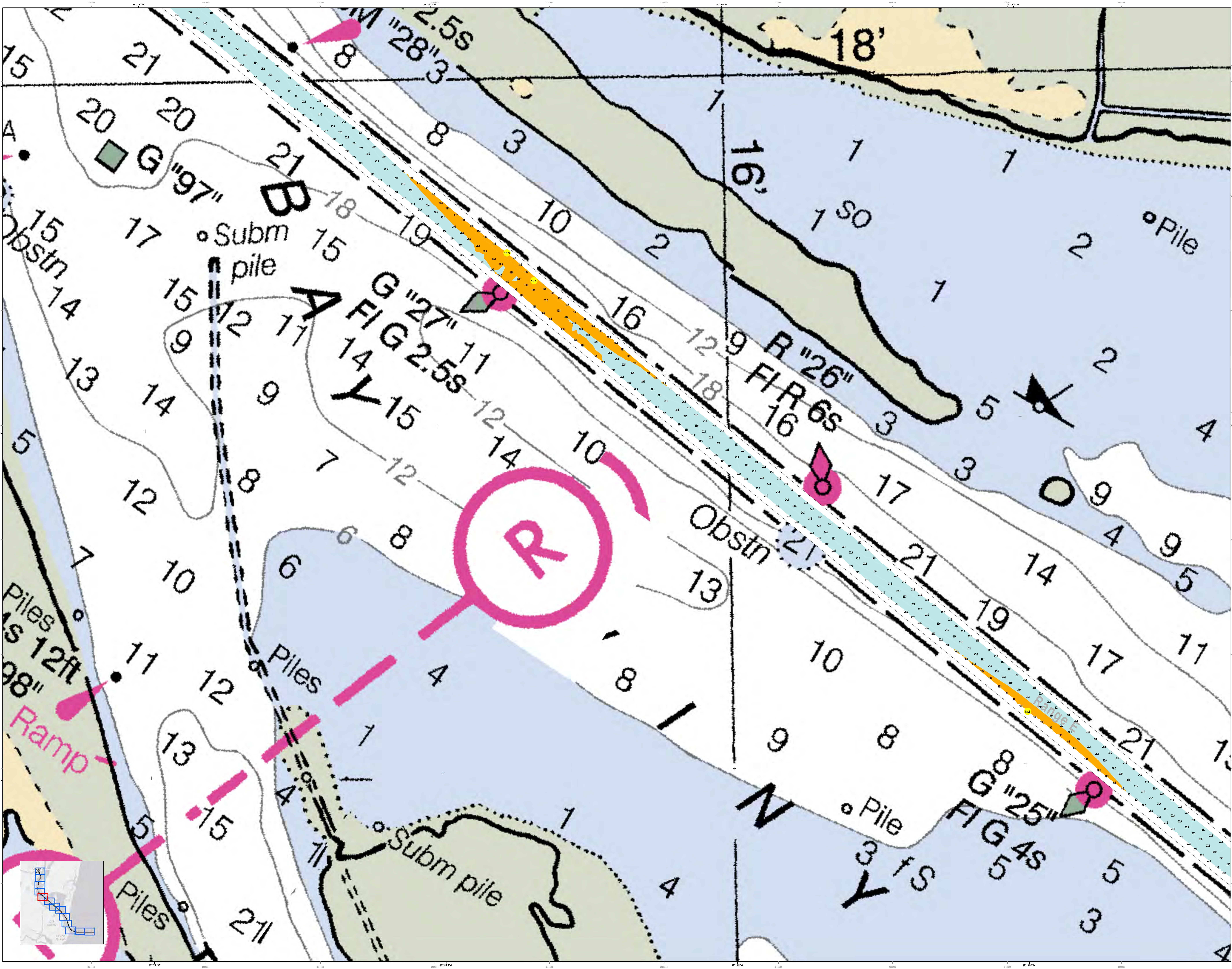
Symbol/Color	Description
Red	Obstruction
Yellow	Shoal
Green	Grass
Blue	Water
Black	Channel
White	Land
Black dashed line	Submerged pile
Black solid line	Structure
Black dotted line	Structure
Black dash-dot line	Structure
Black long-dash line	Structure
Black short-dash line	Structure
Black wavy line	Structure
Black zigzag line	Structure
Black cross-hatch	Structure
Black diagonal lines	Structure
Black horizontal lines	Structure
Black vertical lines	Structure
Black grid	Structure
Black dots	Structure
Black circles	Structure
Black squares	Structure
Black triangles	Structure
Black diamonds	Structure
Black stars	Structure
Black crosses	Structure
Black pluses	Structure
Black asterisks	Structure
Black hash marks	Structure
Black percent signs	Structure
Black ampersands	Structure
Black at signs	Structure
Black dollar signs	Structure
Black pound signs	Structure
Black copyright signs	Structure
Black registered trademark signs	Structure
Black service mark signs	Structure
Black trademark signs	Structure
Black other symbols	Structure

Designed By: JEFFREY B. BARNETT	Survey Date: 03 15 2016	Production Date: 03 18 2016
Reviewed By: JEFFREY B. BARNETT	Project Reference Number: 1603001D	
Reference State: SOUTH CAROLINA	Survey Type: CHANNEL	
Reference Scale: 1 inch = 242 feet	Projection: NAD 1983 StatePlane South Carolina FIPS 3800 Feet	

Georgetown Harbor Channel Survey
The information depicted on this map represents the results of surveys made on the dates indicated and can only be considered as indicating the general location of the objects shown. It is not to be used for navigation. The information on this chart is based on the most recent survey data available. The Corps of Engineers does not warrant the accuracy or completeness of the information on this chart. The user of this chart is advised to use it as a general guide only.

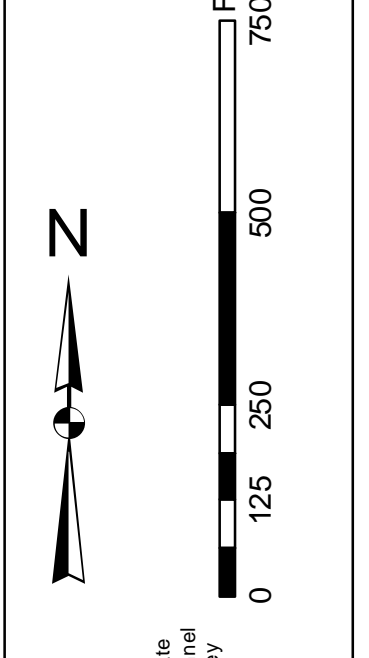
Concluded on: 03 15 2016
Georgetown, South Carolina





In accordance with the U.S. Army Corps of Engineers, Charleston District Office, Special Operations Branch, the data shown on this chart is based on the most recent available data. The data shown on this chart is for informational purposes only and is not to be used for navigation. The data shown on this chart is not to be used for navigation. The data shown on this chart is not to be used for navigation.

Projection Note:
1. The chart is projected on the North American Datum of 1983 (NAD 83).
2. The chart is projected on the North American Datum of 1983 (NAD 83).
3. The chart is projected on the North American Datum of 1983 (NAD 83).



Depth Soundings:
1. Soundings are in feet.
2. Soundings are in feet.

Obstruction:
1. Obstruction is shown by a black triangle.
2. Obstruction is shown by a black triangle.

Range:
1. Range is shown by a dashed line.
2. Range is shown by a dashed line.

Other Symbols:
1. Other symbols are shown by various shapes and colors.
2. Other symbols are shown by various shapes and colors.

Production Date: 03 15 2016
Survey Date: 03 15 2016
Project Reference Number: 123456789
Survey Type: CONDITION

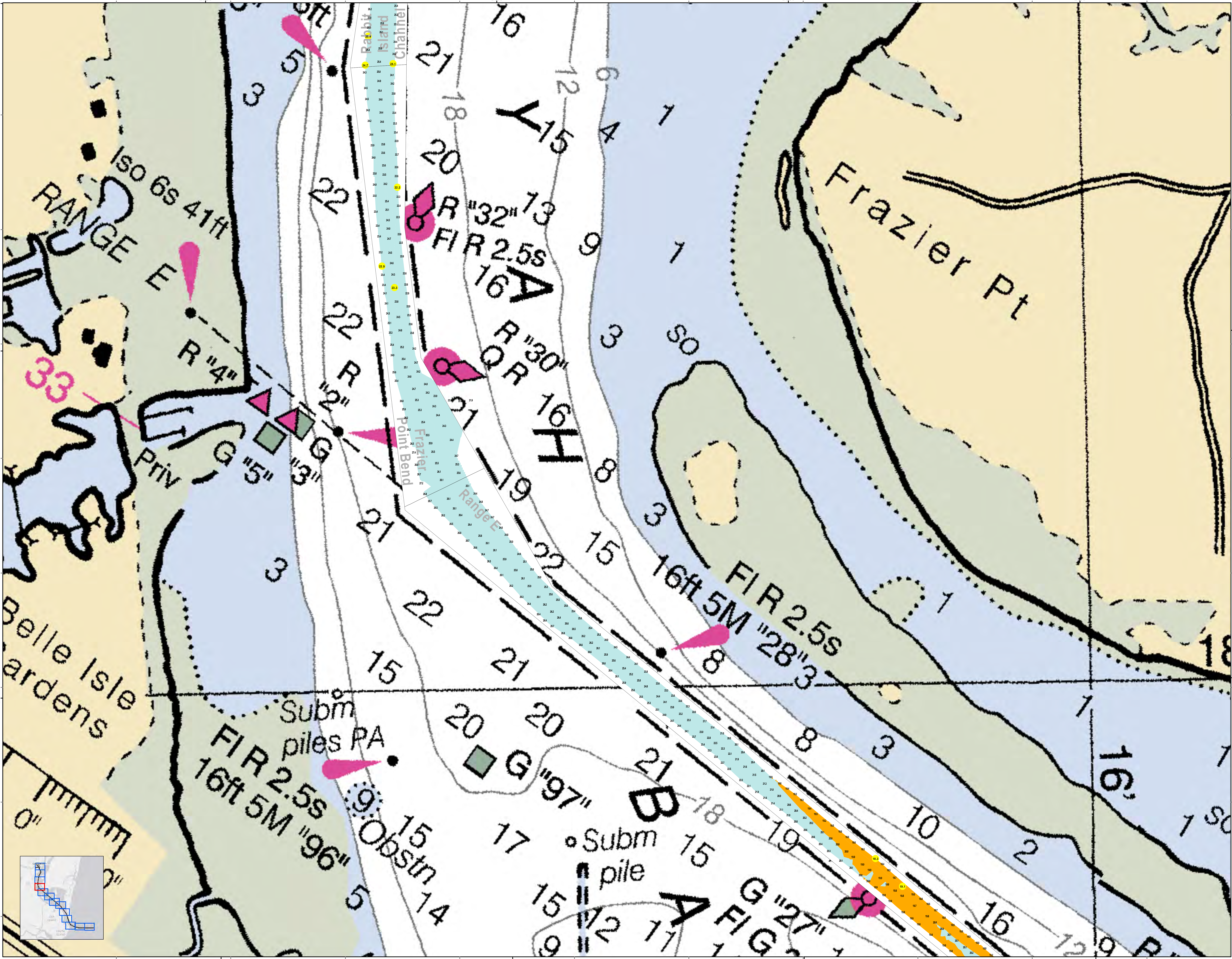
Designed By: Jethro Software v3.02
Reviewed By: ANADOLU
Reference Scale: 1 inch = 242 feet
Projection: NAD 1983 StatePlane South Carolina FIPS 3800 Feet

U.S. Army Corps of Engineers
CHARLESTON DISTRICT
SPECIAL OPERATIONS BRANCH
300 HANCOCK AVE
CHARLESTON, SC 29405
CESAC-GIBRICE-ARMY/AVIL

Georgetown Harbor Channel Survey
The information depicted on this map represents the results of surveys made on the areas indicated and can only be considered as indicating the general location of obstructions.
Concluded on: 03 15 2016
Georgetown, South Carolina

SHEET REFERENCE NUMBER
C001
SHEET 9 OF 13





U.S. Army Corps of Engineers
Charleston District

In accordance with the U.S. Army Corps of Engineers, Charleston District Office, Special Operations Branch, the data for this chart was derived from a survey conducted in 2016. The data was processed and plotted using the latest available information. The data was processed and plotted using the latest available information. The data was processed and plotted using the latest available information. The data was processed and plotted using the latest available information.

Project Name:
Georgetown Harbor Channel Survey

Project Number:
1603001D

Project Date:
03/15/2016

Production Date:
03/18/2016

Scale:
1 inch = 242 feet

Projection:
NAD 1983 StatePlane South Carolina FPS 3800 Feet

Geographic Information System (GIS) Data:
SHPAL DATA BRANCH
80A HARGOOD AVE
CHARLESTON, SC 29405

Contractor:
CESAC/GRIBICE ARMYVIL

Georgetown Harbor Channel Survey
The information depicted on this map represents the results of surveys made on the areas indicated and can only be considered as indicating the general location of the objects shown.

Concluded on: 03/15/2016
Georgetown, South Carolina

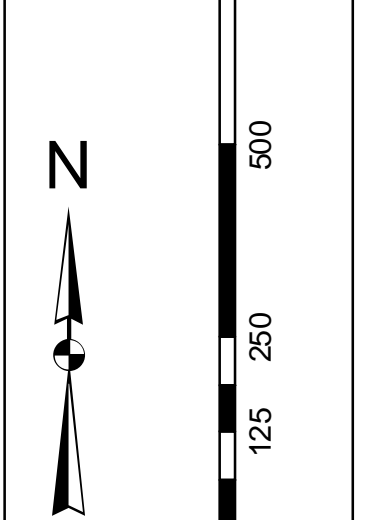
Sheet Reference Number:
C001

Sheet 10 of 13



Disclaimer:
This map was prepared by the U.S. Army Corps of Engineers, Charleston District Office. Special thanks to the staff of the Charleston District Office for their assistance in the field and in the office. The information on this map is based on the data provided to the Corps of Engineers by the contractor. The Corps of Engineers is not responsible for any errors or omissions in the data provided to the Corps of Engineers. The Corps of Engineers is not responsible for any errors or omissions in the data provided to the Corps of Engineers.

Project Name:
Georgetown Harbor Channel Survey



Legend:

- Water Level: 1.00 to 1.25, 1.25 to 1.50, 1.50 to 1.75, 1.75 to 2.00
- Water Depth: 0 to 10, 10 to 20, 20 to 30, 30 to 40, 40 to 50, 50 to 60, 60 to 70, 70 to 80, 80 to 90, 90 to 100
- Water Type: 1.00 to 1.25, 1.25 to 1.50, 1.50 to 1.75, 1.75 to 2.00
- Water Color: 1.00 to 1.25, 1.25 to 1.50, 1.50 to 1.75, 1.75 to 2.00
- Water Level: 1.00 to 1.25, 1.25 to 1.50, 1.50 to 1.75, 1.75 to 2.00
- Water Depth: 0 to 10, 10 to 20, 20 to 30, 30 to 40, 40 to 50, 50 to 60, 60 to 70, 70 to 80, 80 to 90, 90 to 100
- Water Type: 1.00 to 1.25, 1.25 to 1.50, 1.50 to 1.75, 1.75 to 2.00
- Water Color: 1.00 to 1.25, 1.25 to 1.50, 1.50 to 1.75, 1.75 to 2.00

Legend:

- Water Level: 1.00 to 1.25, 1.25 to 1.50, 1.50 to 1.75, 1.75 to 2.00
- Water Depth: 0 to 10, 10 to 20, 20 to 30, 30 to 40, 40 to 50, 50 to 60, 60 to 70, 70 to 80, 80 to 90, 90 to 100
- Water Type: 1.00 to 1.25, 1.25 to 1.50, 1.50 to 1.75, 1.75 to 2.00
- Water Color: 1.00 to 1.25, 1.25 to 1.50, 1.50 to 1.75, 1.75 to 2.00
- Water Level: 1.00 to 1.25, 1.25 to 1.50, 1.50 to 1.75, 1.75 to 2.00
- Water Depth: 0 to 10, 10 to 20, 20 to 30, 30 to 40, 40 to 50, 50 to 60, 60 to 70, 70 to 80, 80 to 90, 90 to 100
- Water Type: 1.00 to 1.25, 1.25 to 1.50, 1.50 to 1.75, 1.75 to 2.00
- Water Color: 1.00 to 1.25, 1.25 to 1.50, 1.50 to 1.75, 1.75 to 2.00

Designed By:	Jeffrey Swartz v3.02	Production Date:	03 15 2016
Reviewed By:	1.2530B	Project Reference Number:	1000000010
Reference Scale:	1 inch = 242 feet	Survey Type:	CONDITION
Projection:	NAD 1983 StatePlane South Carolina FIPS 3800 Feet		

U.S. Army Corps of Engineers
Charleston District Office
Charleston, South Carolina
Signal Data Branch
300 Hagood Ave
Charleston, SC 29405
CESAC-GIBRICE ARMYVIL

Georgetown Harbor Channel Survey
The information depicted on this map represents the results of surveys made on the areas indicated and can only be considered as indicating the general location of the features shown. It is not intended to be used as a legal boundary or title. The information on this map is based on the data provided to the Corps of Engineers by the contractor. The Corps of Engineers is not responsible for any errors or omissions in the data provided to the Corps of Engineers.

Concluded on: 03 15 2016
Georgetown, South Carolina

SHEET REFERENCE NUMBER
C001
SHEET 13 OF 13

