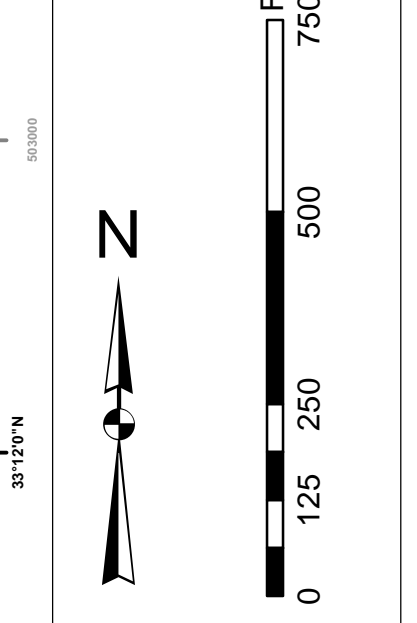
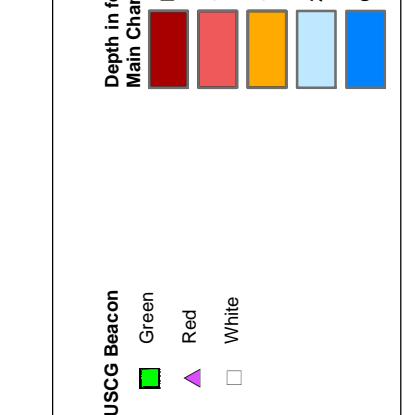


In its capacity as the U.S. Army Corps of Engineers, Charleston District Office, Special District Office, Charleston, South Carolina, has prepared this map for the purpose of providing information to the public. This map is not intended to be used for navigation. The information on this map is based on the best available data and is not intended to be used for navigation. The information on this map is based on the best available data and is not intended to be used for navigation.

Production Notes:
1. This map is a preliminary map.
2. This map is not intended to be used for navigation.
3. This map is not intended to be used for navigation.



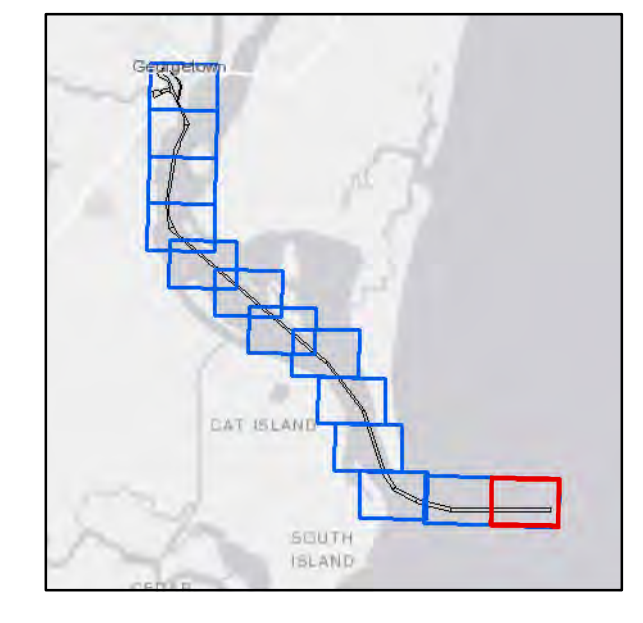
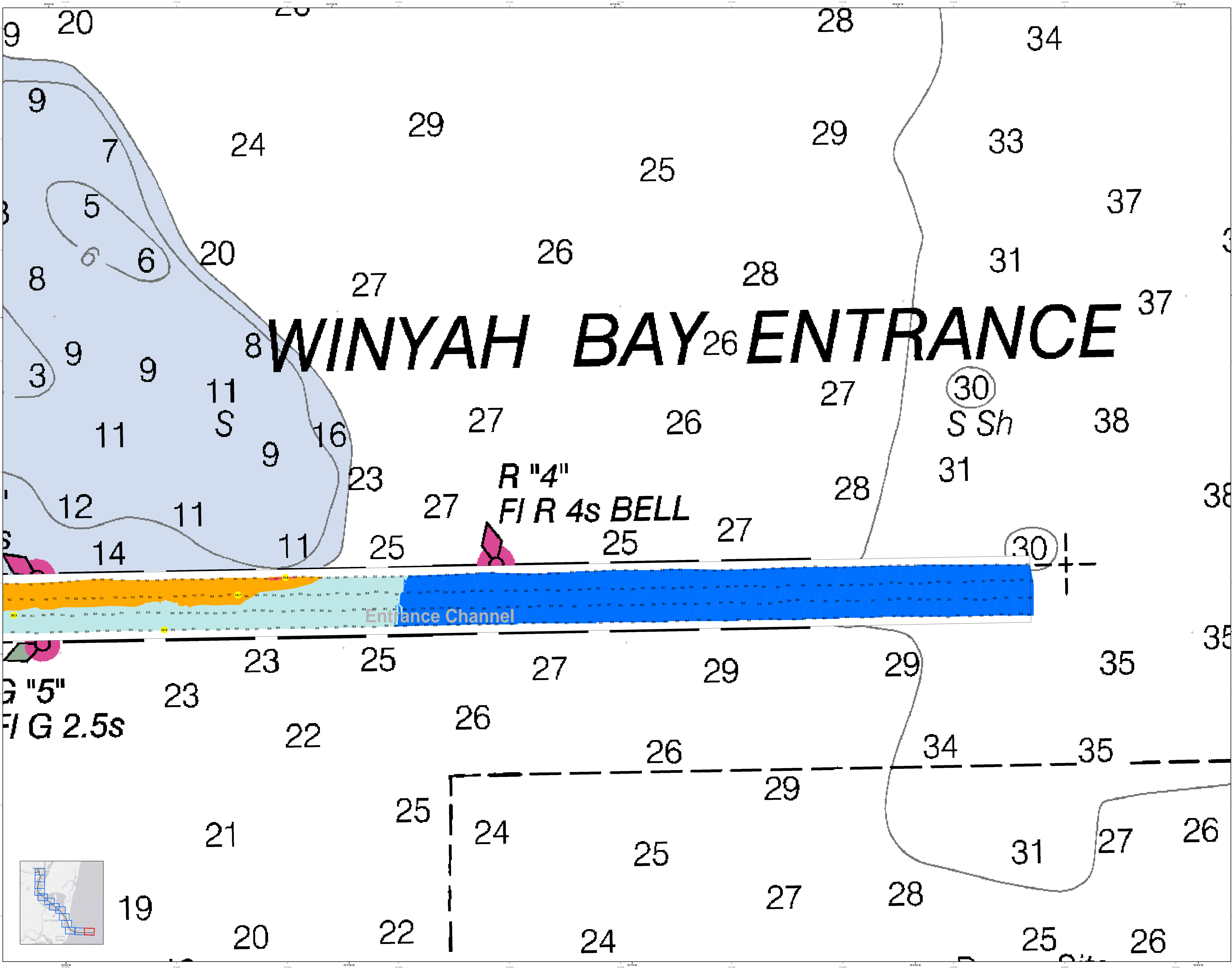
Hydrographic Note:
1. This map is a preliminary map.
2. This map is not intended to be used for navigation.
3. This map is not intended to be used for navigation.

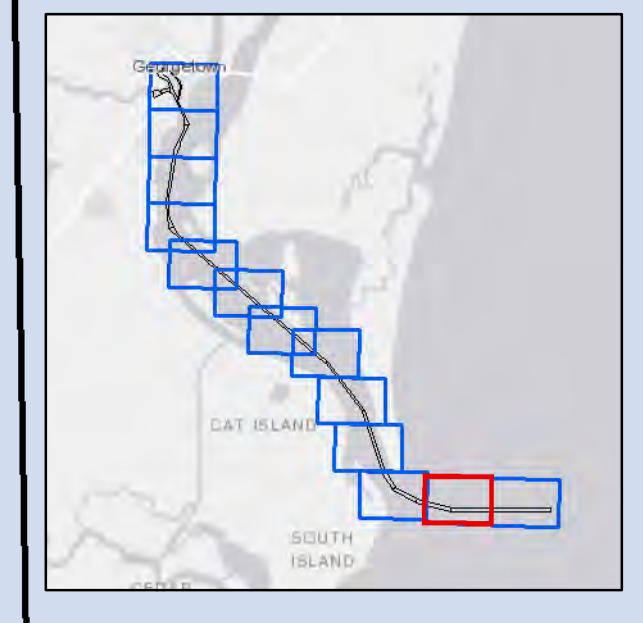
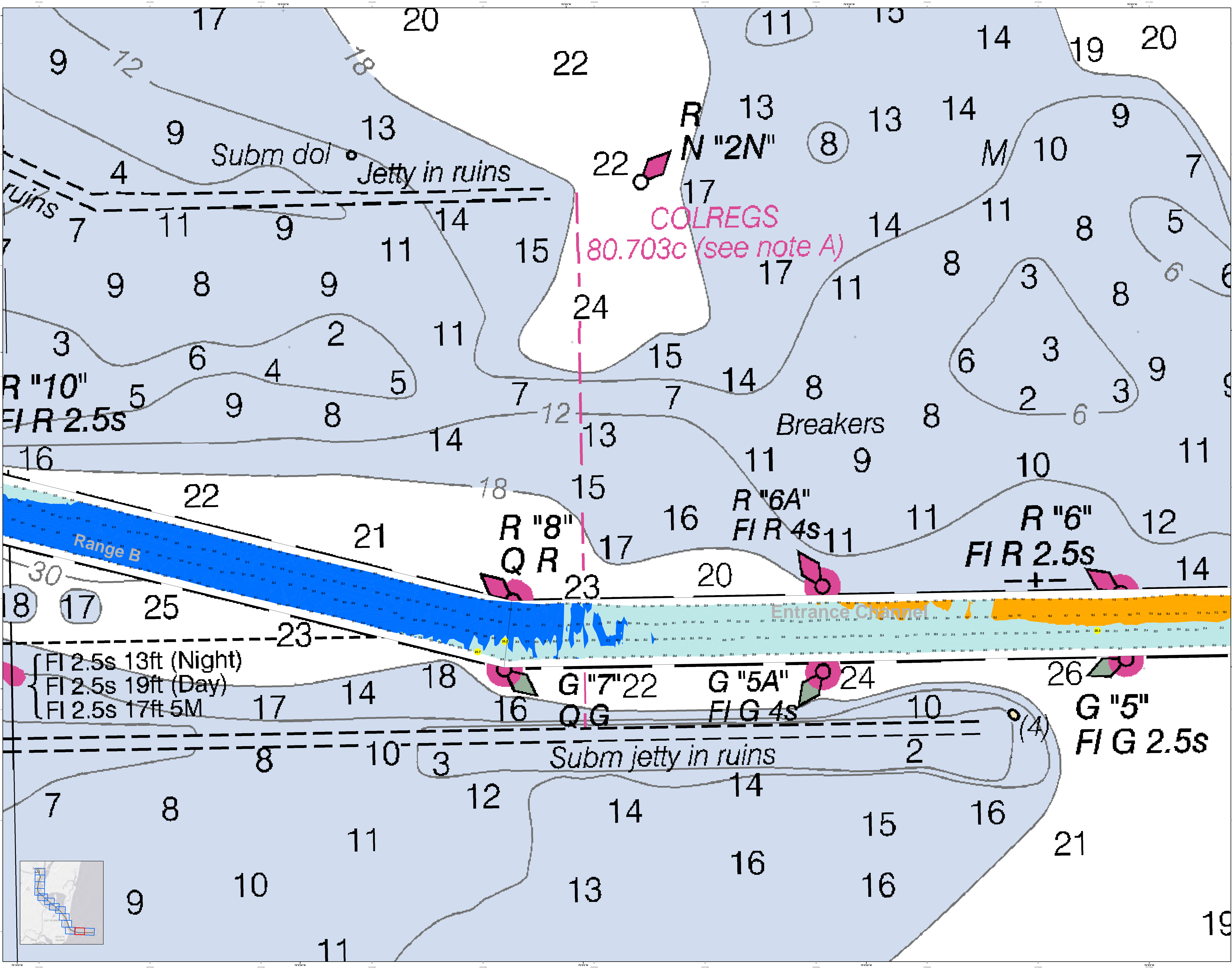


Legend:
Sounding: 30, 31, 32, 33, 34, 35, 36, 37, 38, 39, 40, 41, 42, 43, 44, 45, 46, 47, 48, 49, 50, 51, 52, 53, 54, 55, 56, 57, 58, 59, 60, 61, 62, 63, 64, 65, 66, 67, 68, 69, 70, 71, 72, 73, 74, 75, 76, 77, 78, 79, 80, 81, 82, 83, 84, 85, 86, 87, 88, 89, 90, 91, 92, 93, 94, 95, 96, 97, 98, 99, 100, 101, 102, 103, 104, 105, 106, 107, 108, 109, 110, 111, 112, 113, 114, 115, 116, 117, 118, 119, 120, 121, 122, 123, 124, 125, 126, 127, 128, 129, 130, 131, 132, 133, 134, 135, 136, 137, 138, 139, 140, 141, 142, 143, 144, 145, 146, 147, 148, 149, 150, 151, 152, 153, 154, 155, 156, 157, 158, 159, 160, 161, 162, 163, 164, 165, 166, 167, 168, 169, 170, 171, 172, 173, 174, 175, 176, 177, 178, 179, 180, 181, 182, 183, 184, 185, 186, 187, 188, 189, 190, 191, 192, 193, 194, 195, 196, 197, 198, 199, 200, 201, 202, 203, 204, 205, 206, 207, 208, 209, 210, 211, 212, 213, 214, 215, 216, 217, 218, 219, 220, 221, 222, 223, 224, 225, 226, 227, 228, 229, 230, 231, 232, 233, 234, 235, 236, 237, 238, 239, 240, 241, 242, 243, 244, 245, 246, 247, 248, 249, 250, 251, 252, 253, 254, 255, 256, 257, 258, 259, 260, 261, 262, 263, 264, 265, 266, 267, 268, 269, 270, 271, 272, 273, 274, 275, 276, 277, 278, 279, 280, 281, 282, 283, 284, 285, 286, 287, 288, 289, 290, 291, 292, 293, 294, 295, 296, 297, 298, 299, 300, 301, 302, 303, 304, 305, 306, 307, 308, 309, 310, 311, 312, 313, 314, 315, 316, 317, 318, 319, 320, 321, 322, 323, 324, 325, 326, 327, 328, 329, 330, 331, 332, 333, 334, 335, 336, 337, 338, 339, 340, 341, 342, 343, 344, 345, 346, 347, 348, 349, 350, 351, 352, 353, 354, 355, 356, 357, 358, 359, 360, 361, 362, 363, 364, 365, 366, 367, 368, 369, 370, 371, 372, 373, 374, 375, 376, 377, 378, 379, 380, 381, 382, 383, 384, 385, 386, 387, 388, 389, 390, 391, 392, 393, 394, 395, 396, 397, 398, 399, 400, 401, 402, 403, 404, 405, 406, 407, 408, 409, 410, 411, 412, 413, 414, 415, 416, 417, 418, 419, 420, 421, 422, 423, 424, 425, 426, 427, 428, 429, 430, 431, 432, 433, 434, 435, 436, 437, 438, 439, 440, 441, 442, 443, 444, 445, 446, 447, 448, 449, 450, 451, 452, 453, 454, 455, 456, 457, 458, 459, 460, 461, 462, 463, 464, 465, 466, 467, 468, 469, 470, 471, 472, 473, 474, 475, 476, 477, 478, 479, 480, 481, 482, 483, 484, 485, 486, 487, 488, 489, 490, 491, 492, 493, 494, 495, 496, 497, 498, 499, 500, 501, 502, 503, 504, 505, 506, 507, 508, 509, 510, 511, 512, 513, 514, 515, 516, 517, 518, 519, 520, 521, 522, 523, 524, 525, 526, 527, 528, 529, 530, 531, 532, 533, 534, 535, 536, 537, 538, 539, 540, 541, 542, 543, 544, 545, 546, 547, 548, 549, 550, 551, 552, 553, 554, 555, 556, 557, 558, 559, 560, 561, 562, 563, 564, 565, 566, 567, 568, 569, 570, 571, 572, 573, 574, 575, 576, 577, 578, 579, 580, 581, 582, 583, 584, 585, 586, 587, 588, 589, 590, 591, 592, 593, 594, 595, 596, 597, 598, 599, 600, 601, 602, 603, 604, 605, 606, 607, 608, 609, 610, 611, 612, 613, 614, 615, 616, 617, 618, 619, 620, 621, 622, 623, 624, 625, 626, 627, 628, 629, 630, 631, 632, 633, 634, 635, 636, 637, 638, 639, 640, 641, 642, 643, 644, 645, 646, 647, 648, 649, 650, 651, 652, 653, 654, 655, 656, 657, 658, 659, 660, 661, 662, 663, 664, 665, 666, 667, 668, 669, 670, 671, 672, 673, 674, 675, 676, 677, 678, 679, 680, 681, 682, 683, 684, 685, 686, 687, 688, 689, 690, 691, 692, 693, 694, 695, 696, 697, 698, 699, 700, 701, 702, 703, 704, 705, 706, 707, 708, 709, 710, 711, 712, 713, 714, 715, 716, 717, 718, 719, 720, 721, 722, 723, 724, 725, 726, 727, 728, 729, 730, 731, 732, 733, 734, 735, 736, 737, 738, 739, 740, 741, 742, 743, 744, 745, 746, 747, 748, 749, 750, 751, 752, 753, 754, 755, 756, 757, 758, 759, 760, 761, 762, 763, 764, 765, 766, 767, 768, 769, 770, 771, 772, 773, 774, 775, 776, 777, 778, 779, 780, 781, 782, 783, 784, 785, 786, 787, 788, 789, 790, 791, 792, 793, 794, 795, 796, 797, 798, 799, 800, 801, 802, 803, 804, 805, 806, 807, 808, 809, 810, 811, 812, 813, 814, 815, 816, 817, 818, 819, 820, 821, 822, 823, 824, 825, 826, 827, 828, 829, 830, 831, 832, 833, 834, 835, 836, 837, 838, 839, 840, 841, 842, 843, 844, 845, 846, 847, 848, 849, 850, 851, 852, 853, 854, 855, 856, 857, 858, 859, 860, 861, 862, 863, 864, 865, 866, 867, 868, 869, 870, 871, 872, 873, 874, 875, 876, 877, 878, 879, 880, 881, 882, 883, 884, 885, 886, 887, 888, 889, 890, 891, 892, 893, 894, 895, 896, 897, 898, 899, 900, 901, 902, 903, 904, 905, 906, 907, 908, 909, 910, 911, 912, 913, 914, 915, 916, 917, 918, 919, 920, 921, 922, 923, 924, 925, 926, 927, 928, 929, 930, 931, 932, 933, 934, 935, 936, 937, 938, 939, 940, 941, 942, 943, 944, 945, 946, 947, 948, 949, 950, 951, 952, 953, 954, 955, 956, 957, 958, 959, 960, 961, 962, 963, 964, 965, 966, 967, 968, 969, 970, 971, 972, 973, 974, 975, 976, 977, 978, 979, 980, 981, 982, 983, 984, 985, 986, 987, 988, 989, 990, 991, 992, 993, 994, 995, 996, 997, 998, 999, 1000.

Designed By:	U.S. Army Corps of Engineers Charleston District Office	Survey Date:	26 APR 2018	Production Date:	07 MAY 2018
Reviewed By:	U.S. Army Corps of Engineers Charleston District Office	Project Reference Number:	13030	Project Reference Number:	13030
Scale:	1 inch = 250 feet	Scale:	1 inch = 250 feet	Scale:	1 inch = 250 feet
Projection:	NAD 1983 StatePlane South Carolina FIPS 3900 Feet	Projection:	NAD 1983 StatePlane South Carolina FIPS 3900 Feet	Projection:	NAD 1983 StatePlane South Carolina FIPS 3900 Feet

Georgetown Harbor Channel Survey
The information depicted on this map represents the results of surveys made on the dates indicated and can only be considered as indicating the general location of the channel. It is not intended to be used for navigation.
Concluded on: 26 APRIL 2018
Georgetown, South Carolina





U.S. Army Corps of Engineers
Charleston District

Georgetown Harbor Channel Survey
The information depicted on this map represents the results of surveys made on the dates indicated and can only be considered as indicating the general location of the objects shown. It is not intended to be used for navigation.
Concluded on: 26 APRIL 2018
Georgetown, South Carolina

Designed By: U.S. Army Corps of Engineers, District Office, Charleston, South Carolina
Reviewed By: U.S. Army Corps of Engineers, District Office, Charleston, South Carolina
Scale: 1 inch = 250 feet
Projection: NAD 1983 StatePlane South Carolina FIPS 3900 Feet

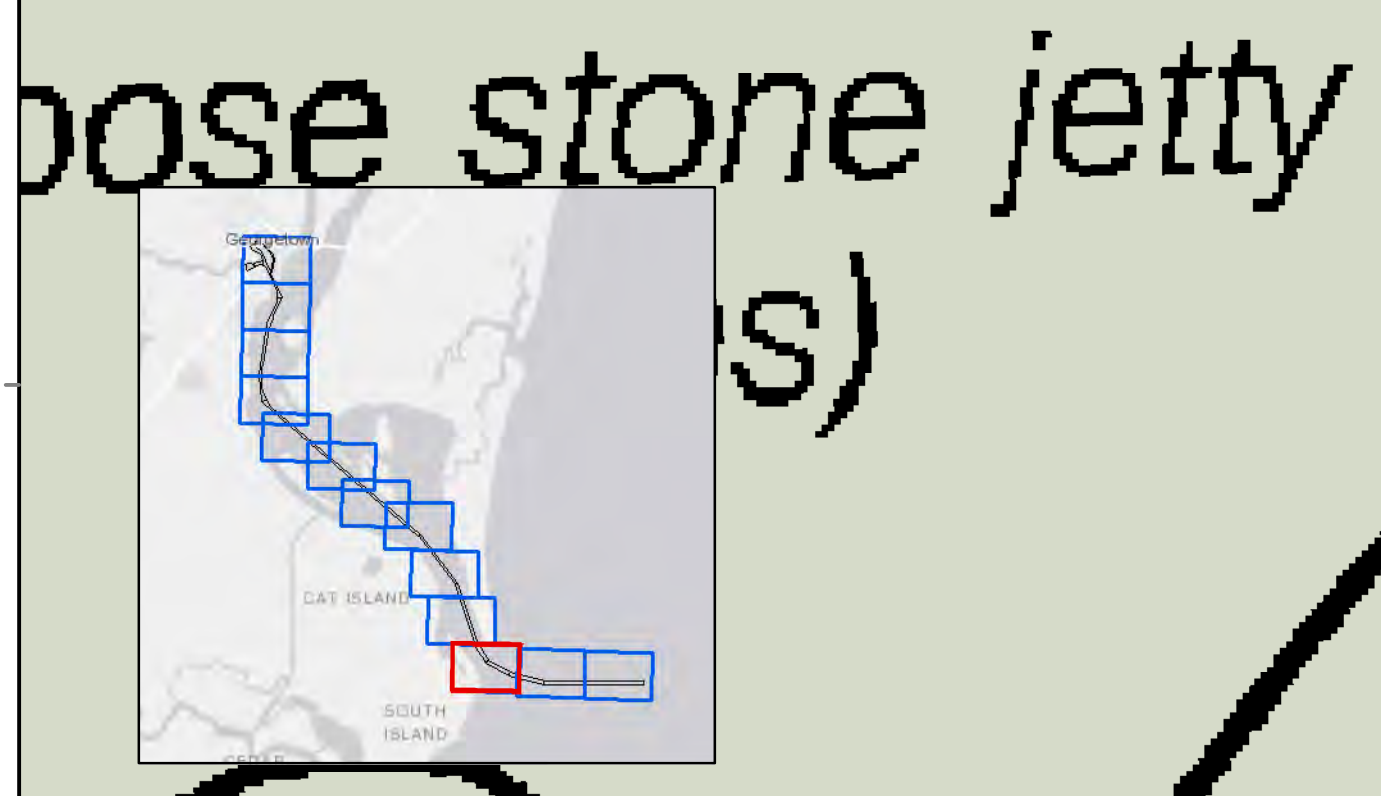
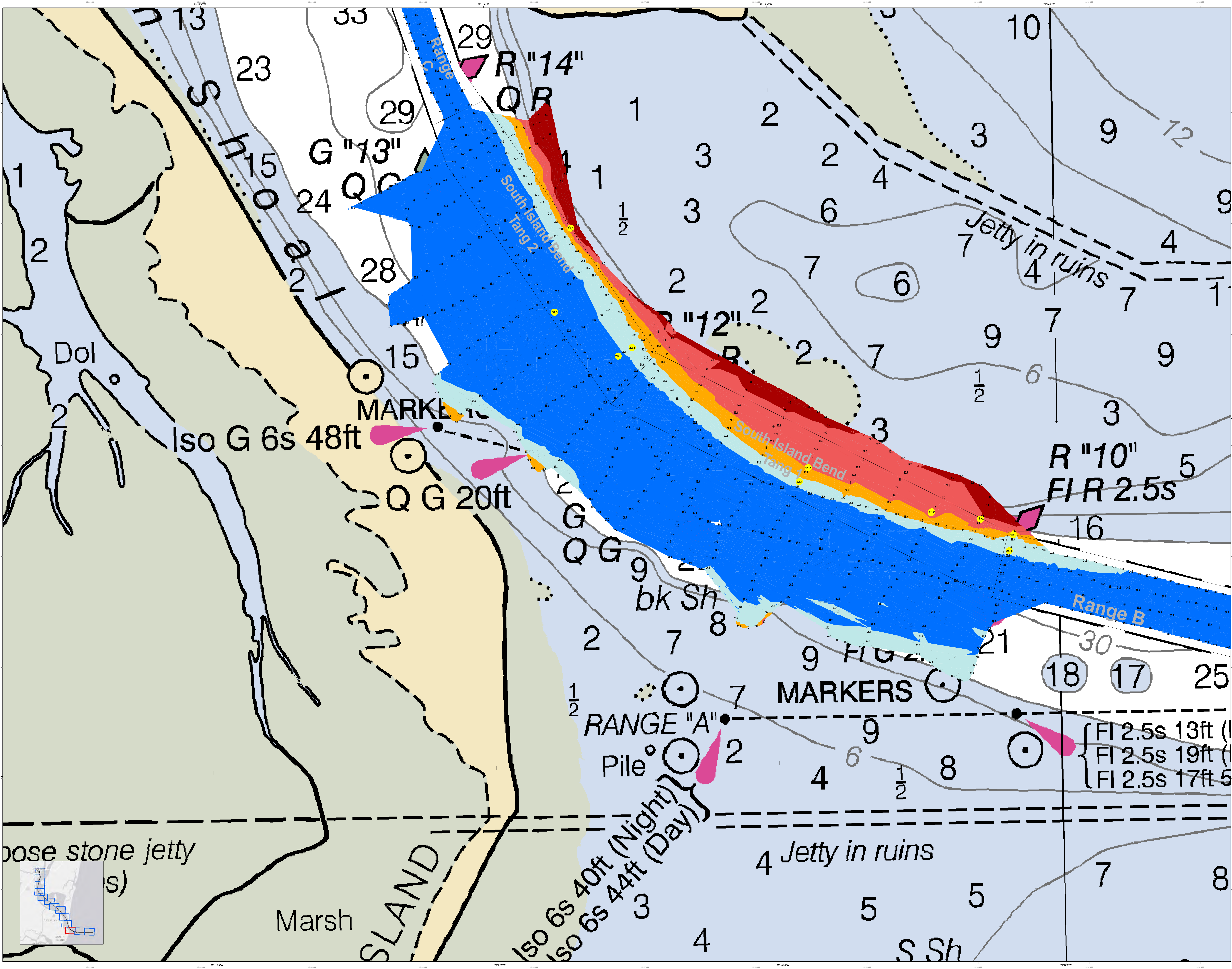
Survey Date: 26 APR 2018
Production Date: 07 MAY 2018
Project Reference Number: 15030
Sheet Number: 0001
Sheet Title: GEORGETOWN HARBOR CHANNEL

Legend

- Depth Soundings: 1, 2, 3, 4, 5, 6, 7, 8, 9, 10, 11, 12, 13, 14, 15, 16, 17, 18, 19, 20, 21, 22, 23, 24, 25, 26, 27, 28, 29, 30
- Breakers: Breakers
- Submerged Objects: Subm dol, Subm jetty in ruins
- Navigational Aids: R '10' FIR 2.5s, R '8' QR, G '7' 22, G '5A' FIG 4s, G '5' FIG 2.5s, R '6A' FIR 4s, R '6' FIR 2.5s, N '2N' COLREGS 80.703c (see note A)
- Range B: Range B
- Entrance Channel: Entrance Channel

Scale
0 125 250 500 750 Feet

North Arrow



U.S. Army Corps of Engineers
Charleston District

Georgetown Harbor Channel Survey
The information depicted on this map represents the results of surveys made on the dates indicated and can only be considered as indicating the general character of the bottom. It is not intended to be used for navigation.

Concluded on: **26 APRIL 2018**
Georgetown, South Carolina

Designed By:	U.S. Army Corps of Engineers	Production Date:	07 MAY 2018
Reviewed By:	U.S. Army Corps of Engineers	Survey Date:	26 APR 2018
Scale:	1:50,000	Project Reference Number:	18C001D
Projection:	NAD 1983 StatePlane South Carolina FIPS 3900 Feet	Survey Condition:	CONDITION

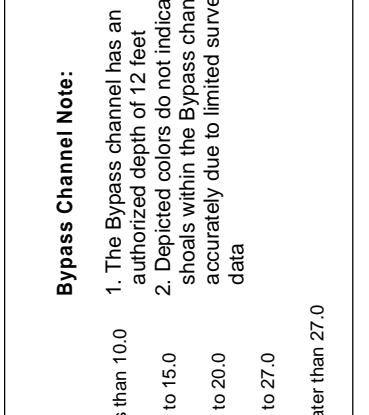
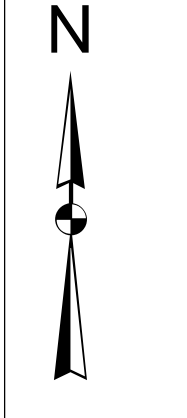
Legend

- Depth Contours: 1-10, 10-20, 20-30, 30+
- Navigation Markers: Iso G, Q G, Pile, MARKERS
- Obstructions: Jetty in ruins, Range A, Range B
- Other: Marsh, SLAND, S Sh, bk Sh, HUG

Scale: 0 125 250 500 750 Feet

In its capacity as the U.S. Army Corps of Engineers, Charleston District Office, Special Districts has been authorized to conduct, coordinate, and supervise the construction of the project. The project is a navigational improvement project. The project consists of the construction of a navigational aid. The project is located in the Charleston Harbor, South Carolina. The project is a navigational aid. The project is a navigational aid.

Project Name:
1. Georgetown LT FI (2) 15s 85ft 15M
2. Georgetown LT FI (2) 15s 85ft 15M
3. Georgetown LT FI (2) 15s 85ft 15M
4. Georgetown LT FI (2) 15s 85ft 15M
5. Georgetown LT FI (2) 15s 85ft 15M

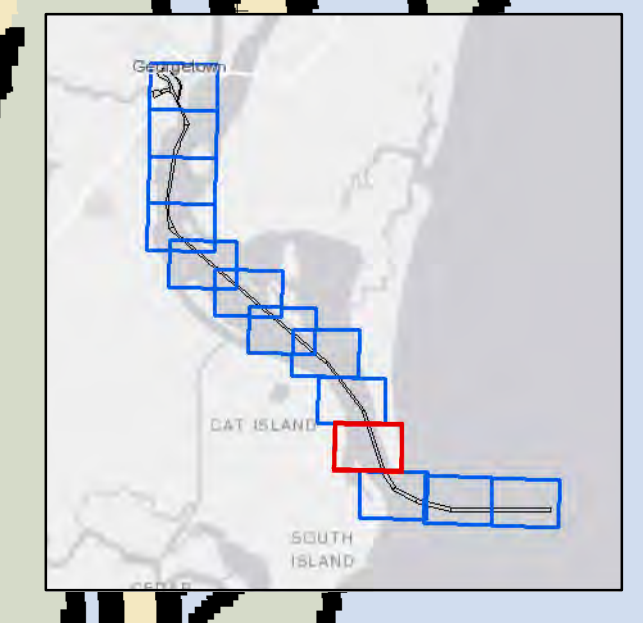
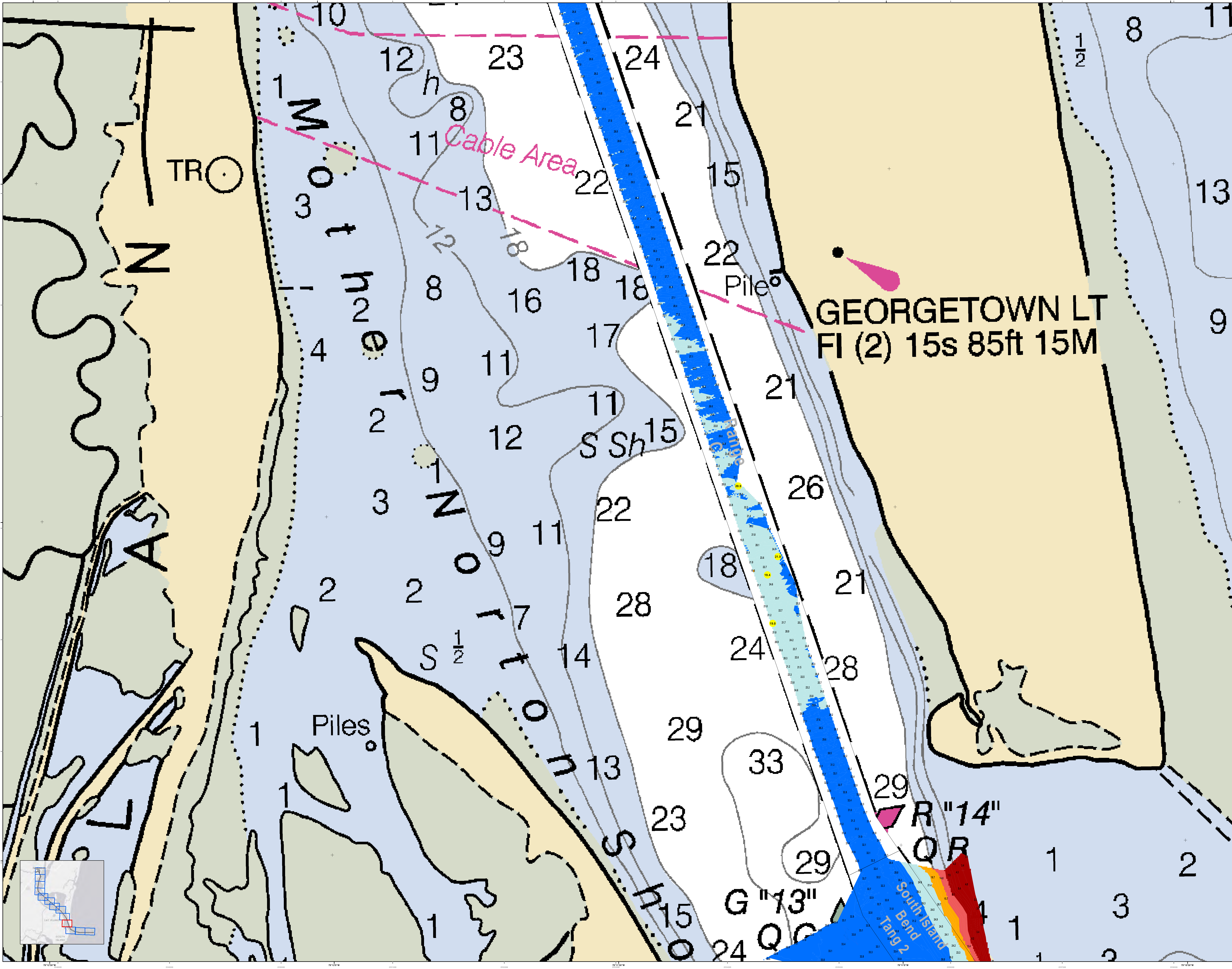


Legend

Symbol	Description
(Color swatches)	Depth Soundings
(Color swatches)	Chart Symbols
(Color swatches)	Navigation Aids
(Color swatches)	Obstructions
(Color swatches)	Other Symbols

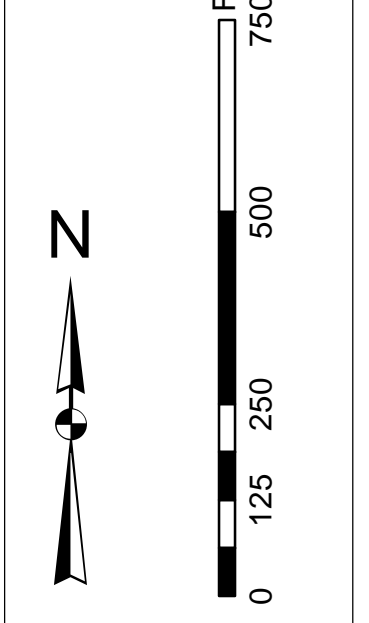
U.S. Army Corps of Engineers Charleston District Office Charleston, South Carolina	Designed By: Hydro Software v3.82	Survey Date: 26 APR 2018	Production Date: 07 MAY 2018
SAVANNAH DISTRICT BIA/ACCO/AVE CHARLESTON, SC 29403	Reviewed By: 1:50,000	Project Reference Number: PDC0013	Project Reference Number: PDC0013
CEASAC/SIS/USACE/ARMY/ML	Scale: 1 inch = 250 feet	Survey Station: CONDITION	Scale: CONDITION
	Projection: NAD 1983 StatePlane South Carolina FIPS 3900 Feet		

Georgetown Harbor Channel Survey
The information depicted on this map represents the results of surveys made on the dates indicated and can only be considered as indicating the general character of the channel. It is not to be used for navigation.
Concluded on: 26 APRIL 2018
Georgetown, South Carolina

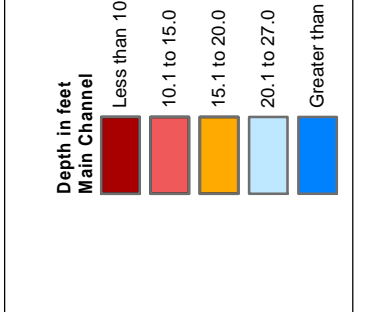


In its capacity as the U.S. Army Corps of Engineers, Charleston District Office, Special Districts has been authorized to conduct the hydrographic survey of the waterway shown on this map. The results of the survey are hereby published for the information of the public. These data were derived from the best available information and are not guaranteed to be accurate or complete. The user of this information is advised to use it at their own risk and to verify the information as needed for their own purposes. No liability is assumed by the U.S. Army Corps of Engineers for any errors or omissions in this information.

Vertical Datum:
Mean Sea Level (MSL)
Mean High Water (MHW)
Mean Low Water (MLW)
Lowest Low Water (LLW)
Mean Higher High Water (MHHW)
Mean Lower Low Water (MLLW)



Vertical Datum:
Mean Sea Level (MSL)
Mean High Water (MHW)
Mean Low Water (MLW)
Lowest Low Water (LLW)
Mean Higher High Water (MHHW)
Mean Lower Low Water (MLLW)



Legend

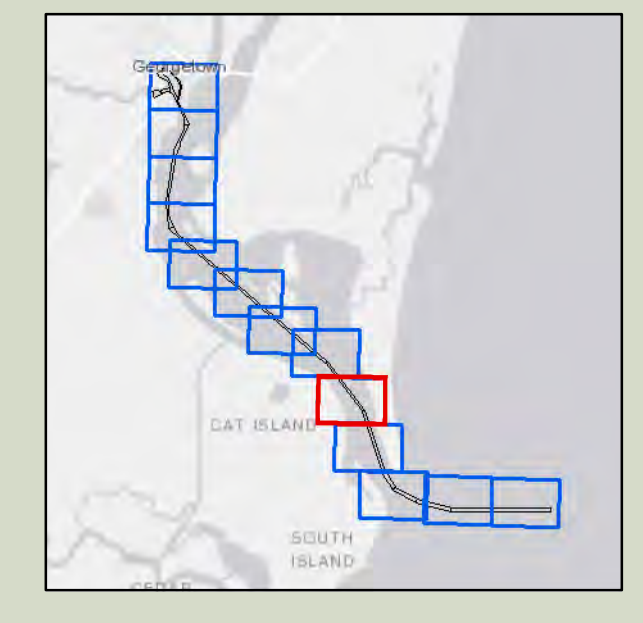
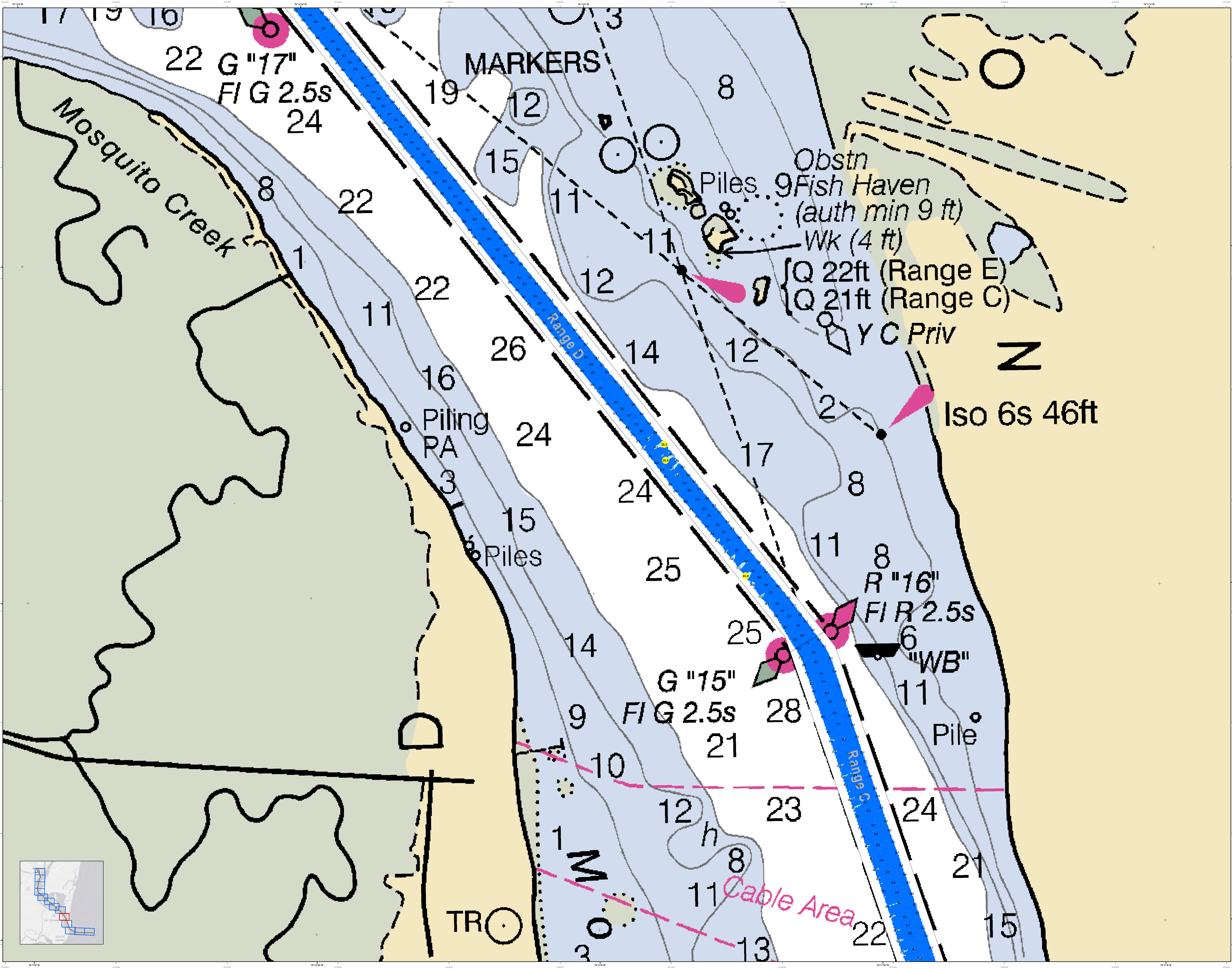
Water	Blue
Shoals	Light Blue
Obstructions	Black
Light	White
Structure	Black
Structure	White
Structure	Black
Structure	White
Structure	Black
Structure	White
Structure	Black
Structure	White

Designed By:	U.S. Army Corps of Engineers
Reviewed By:	U.S. Army Corps of Engineers
Approved By:	U.S. Army Corps of Engineers
Production Date:	07 MAY 2018

Project Reference Number:	18-0000000
Sheet Name:	CONDITION
Scale:	1" = 250' Feet
Projection:	NAD 1983 StatePlane South Carolina FIPS 3900 Feet

U.S. Army Corps of Engineers	Charleston District Office
Charleston, South Carolina	29405
Charleston, South Carolina	29405

Georgetown Harbor Channel Survey
The information depicted on this map represents the results of surveys made on the dates indicated and can only be considered as indicating the general character of the bottom. No liability is assumed for any errors or omissions in this information.
Concluded on: 26 APRIL 2018
Georgetown, South Carolina



In its capacity as U.S. Army Corps of Engineers, Charleston District Office, Special District Office for the Port of Charleston, South Carolina, has prepared this chart for the purpose of providing information to mariners. The information is based on the best available information and is not intended to be used for navigation. The user is advised to use the information for navigation purposes at their own risk. The user is encouraged to use all prudent safety measures.

Vertical Datum:
1. The datum for soundings is Mean High Water (MHW).
2. The datum for elevations is Mean Low Water (MLW).
3. Elevations are in feet and meters.
4. All depths are in feet unless otherwise noted.
5. All soundings are in feet unless otherwise noted.

Horizontal Datum:
1. The datum for all bearings is North Carolina State Plane 8300 Feet.
2. The datum for all bearings is North Carolina State Plane 8300 Feet.

Scale:
1:25,000
1 inch = 250 feet

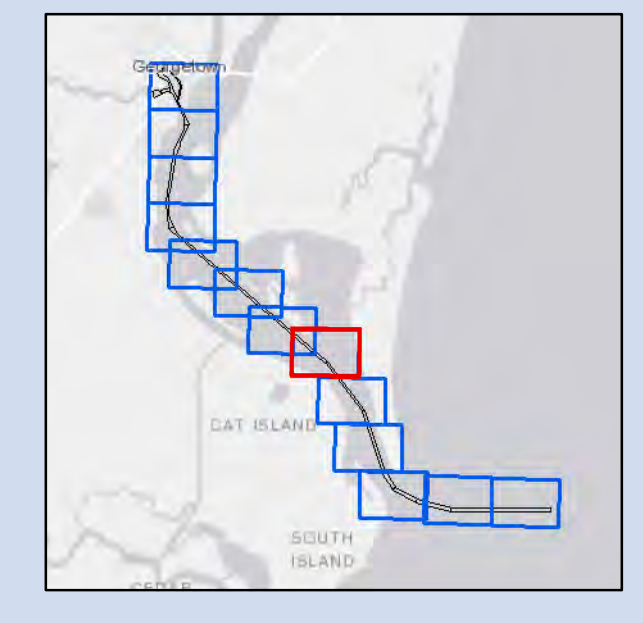
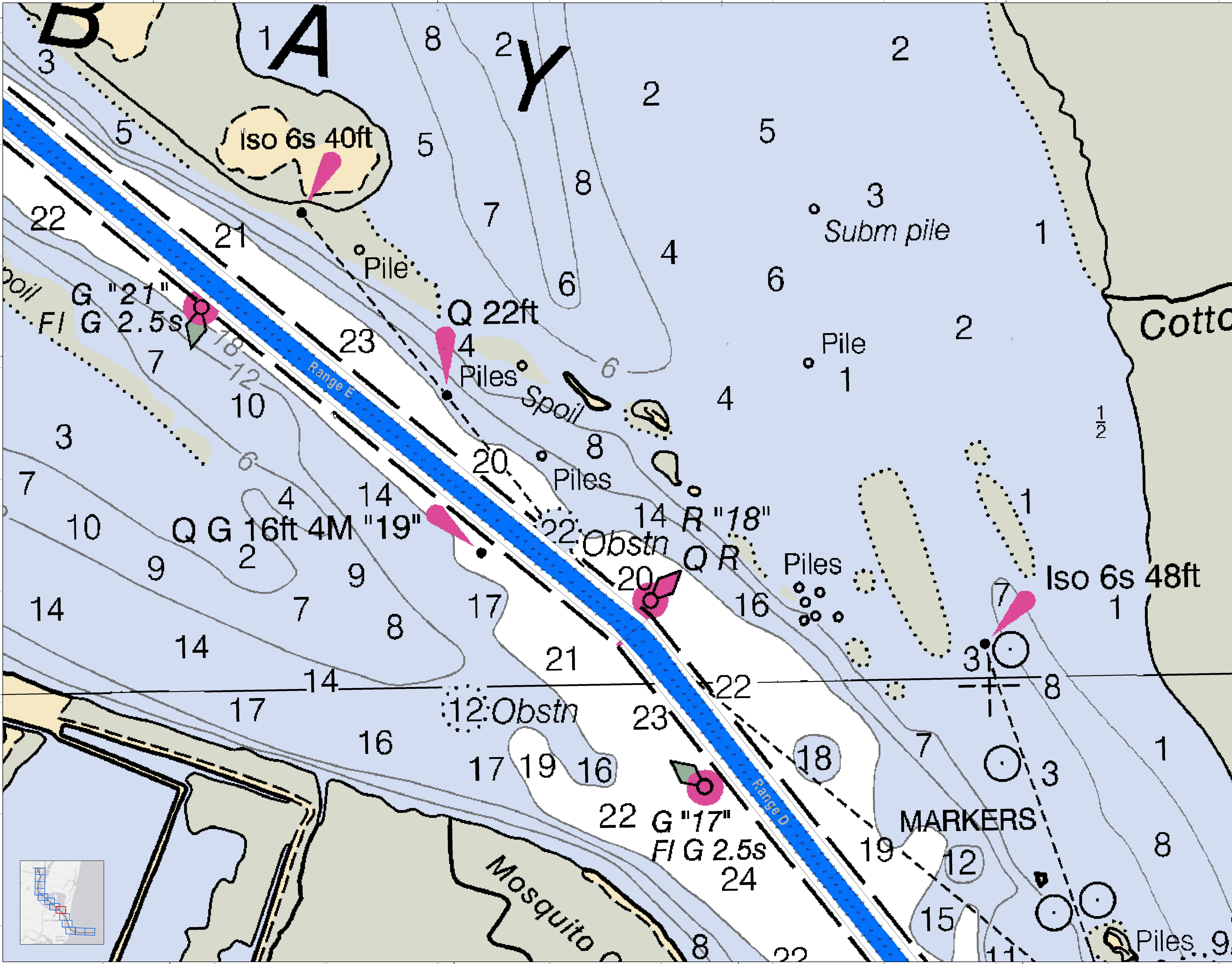
Legend:
Soundings: 1. Soundings in feet, 2. Soundings in meters, 3. Soundings in fathoms, 4. Soundings in meters.
Obstructions: 1. Obstructions, 2. Obstructions, 3. Obstructions, 4. Obstructions.
Piles: 1. Piles, 2. Piles, 3. Piles, 4. Piles.
Spoil: 1. Spoil, 2. Spoil, 3. Spoil, 4. Spoil.
Iso: 1. Iso, 2. Iso, 3. Iso, 4. Iso.

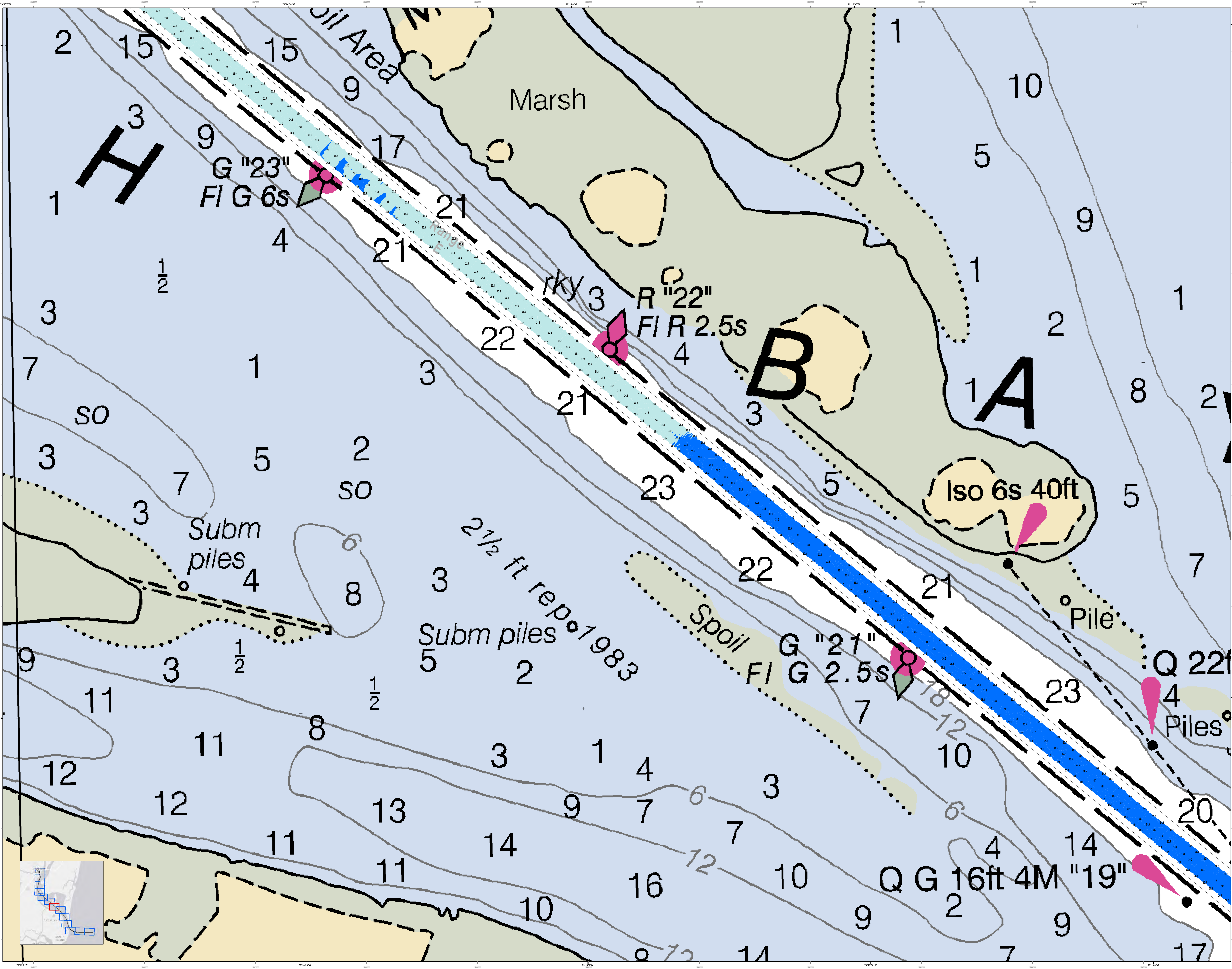
Designed By:	U.S. Army Corps of Engineers, District Office, Charleston, South Carolina
Reviewed By:	U.S. Army Corps of Engineers, District Office, Charleston, South Carolina
Approved By:	U.S. Army Corps of Engineers, District Office, Charleston, South Carolina
Project Reference Number:	13-030
Survey Date:	26 APR 2018
Production Date:	07 MAY 2018
Scale:	1 inch = 250 feet
Projection:	NAD 83 StatePlane South Carolina FIPS 3900 Feet

Georgetown Harbor Channel Survey
The information depicted on this map represents the results of surveys made on the dates indicated and can only be considered as indicating the general location of obstructions. It is not intended to be used for navigation. The user is advised to use the information for navigation purposes at their own risk. The user is encouraged to use all prudent safety measures.

Concluded on: 26 APRIL 2018
Georgetown, South Carolina

SHEET REFERENCE NUMBER
C001
SHEET 6 OF 13





U.S. Army Corps of Engineers
Charleston District

Georgetown Harbor Channel Survey
The information depicted on this map represents the results of surveys made on the dates indicated and can only be considered as indicating the general character of the bottom. It is not to be used for navigation. It is not to be used for any other purpose without the express approval of the District Engineer.

Legend

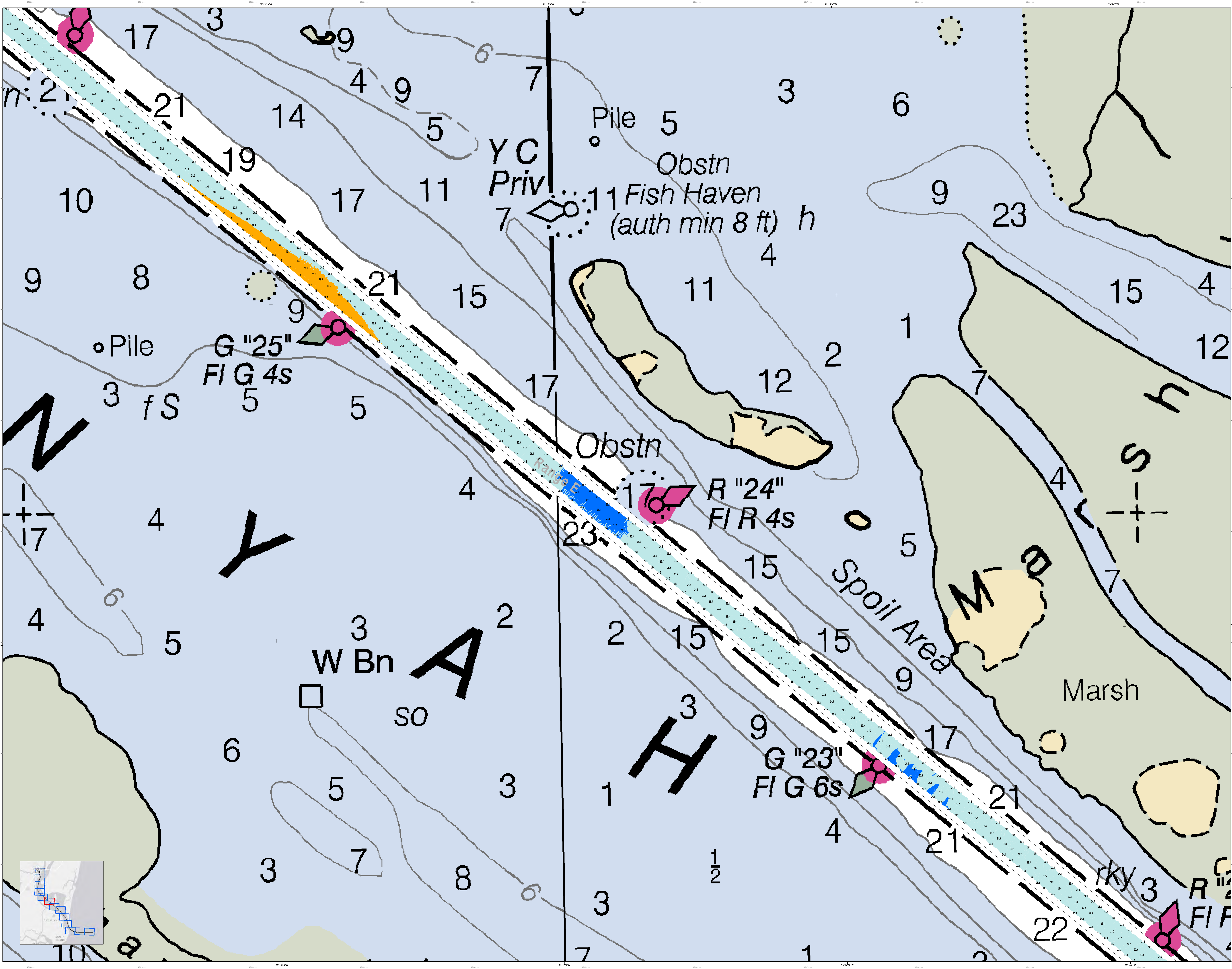
- Soundings: 1, 2, 3, 4, 5, 6, 7, 8, 9, 10, 11, 12, 13, 14, 15, 16, 17, 18, 19, 20, 21, 22, 23
- Depth Contours: 1, 2, 3, 4, 5, 6, 7, 8, 9, 10, 11, 12, 13, 14, 15, 16, 17, 18, 19, 20, 21, 22, 23
- Obstructions: Iso 6s 40ft, Pile, Piles
- Other Features: Oil Area, Marsh, Subm piles, Spoil, Range, Rocky

Scale
1 inch = 250 feet

Production Date: 07 MAY 2018
Survey Date: 26 APR 2018
Project Reference Number: 15030
Scale: 1 inch = 250 feet
Projection: NAD 1983 StatePlane South Carolina FIPS 3900 Feet

U.S. Army Corps of Engineers
CHARLESTON DISTRICT
SAYLOR BAY BRANCH
800 HARGOOD AVE
CHARLESTON, SC 29403
CESAC-GIS/USACE-ARMY/ML

Georgetown, South Carolina
C001
SHEET 7 OF 13



U.S. Army Corps of Engineers
Charleston District

Georgetown Harbor Channel Survey
The information depicted on this map represents the results of surveys made on the dates indicated and can only be considered as indicating the general character of the bottom and is not to be used for navigation. Concluded on: 26 APRIL 2018
Georgetown, South Carolina

Legend

Soundings: 1. 1 to 1000 fathoms (blue), 2. 100 to 1000 fathoms (green), 3. 10 to 100 fathoms (yellow), 4. 1 to 10 fathoms (orange), 5. 1 to 10 fathoms (red), 6. 1 to 10 fathoms (purple), 7. 1 to 10 fathoms (brown), 8. 1 to 10 fathoms (pink), 9. 1 to 10 fathoms (grey), 10. 1 to 10 fathoms (white).

Obstructions: 1. Obstruction (black), 2. Obstruction (red), 3. Obstruction (yellow), 4. Obstruction (green), 5. Obstruction (blue), 6. Obstruction (purple), 7. Obstruction (brown), 8. Obstruction (pink), 9. Obstruction (grey), 10. Obstruction (white).

Navigation Aids: 1. Buoy (red), 2. Buoy (yellow), 3. Buoy (green), 4. Buoy (blue), 5. Buoy (purple), 6. Buoy (brown), 7. Buoy (pink), 8. Buoy (grey), 9. Buoy (white), 10. Buoy (black).

Other Symbols: 1. Light (black), 2. Light (red), 3. Light (yellow), 4. Light (green), 5. Light (blue), 6. Light (purple), 7. Light (brown), 8. Light (pink), 9. Light (grey), 10. Light (white).

Scale: 1 inch = 250 feet

Production Date: 07 MAY 2018
Survey Date: 26 APR 2018
Project Reference Number: 18030010
Revision: 1
Scale: 1 inch = 250 feet
Condition: CONDITION

U.S. Army Corps of Engineers
CHARLESTON DISTRICT
SOUTH CAROLINA
SAYRE, RYAN BRANCH
804 HARGOOD AVE
CHARLESTON, SC 29403
CESAC-GIS/USACE-ARMY/ML

Designed By: Hydro Software v3.82
Reviewed By: Absolute Scale 1:50,000
Projection: NAD 1983 StatePlane South Carolina FIPS 3900 Feet

SHEET REFERENCE NUMBER
C001
SHEET 8 OF 13

In accordance with the U.S. Army Corps of Engineers, Charleston District Office, Special Data Access Policy, this map is provided as a tool for navigation and is not intended to be used for any other purpose. This map is not intended to be used for any other purpose. This map is not intended to be used for any other purpose. This map is not intended to be used for any other purpose.

Vertical Datum:
1. Mean Sea Level (MSL)
2. Mean Lower Low Water (MLLW)
3. Mean High Water (MHW)
4. Mean Lower High Water (MLHW)
5. Mean Sea Level (MSL)

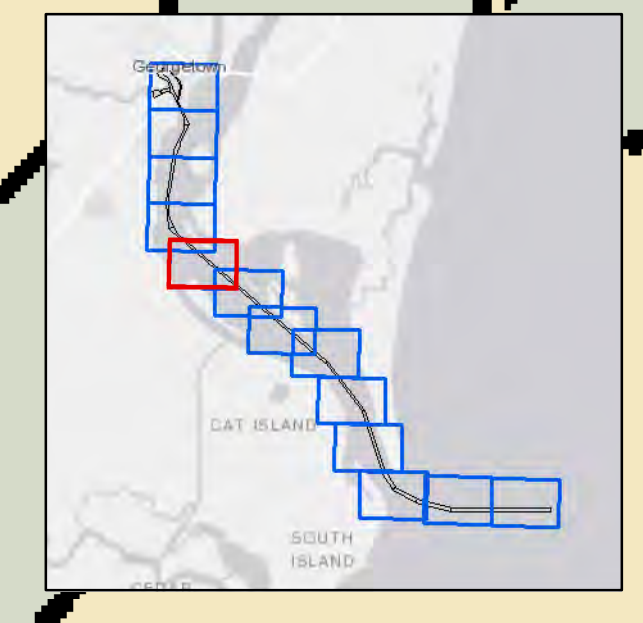
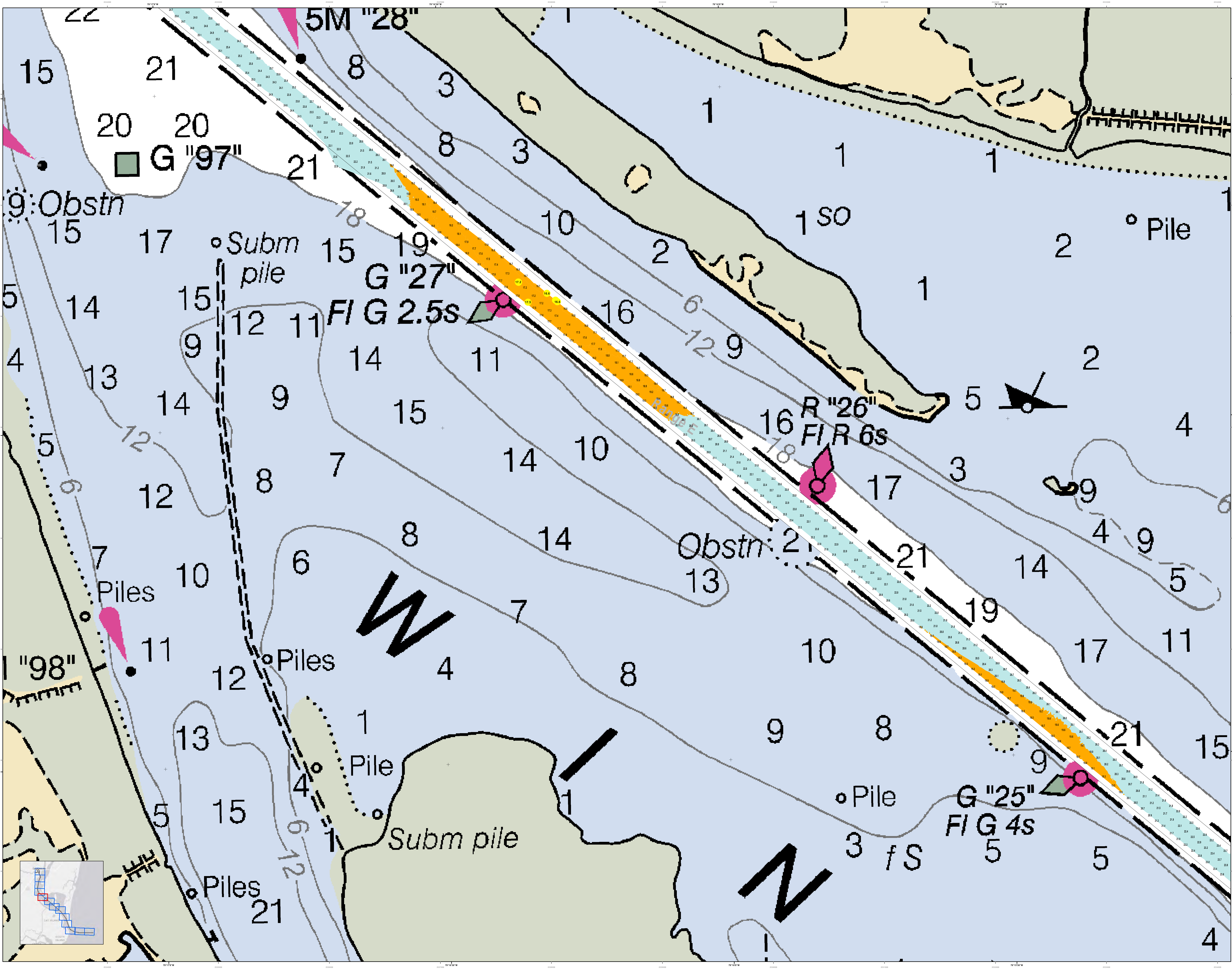
Scale:
1:25,000
1 inch = 250 feet

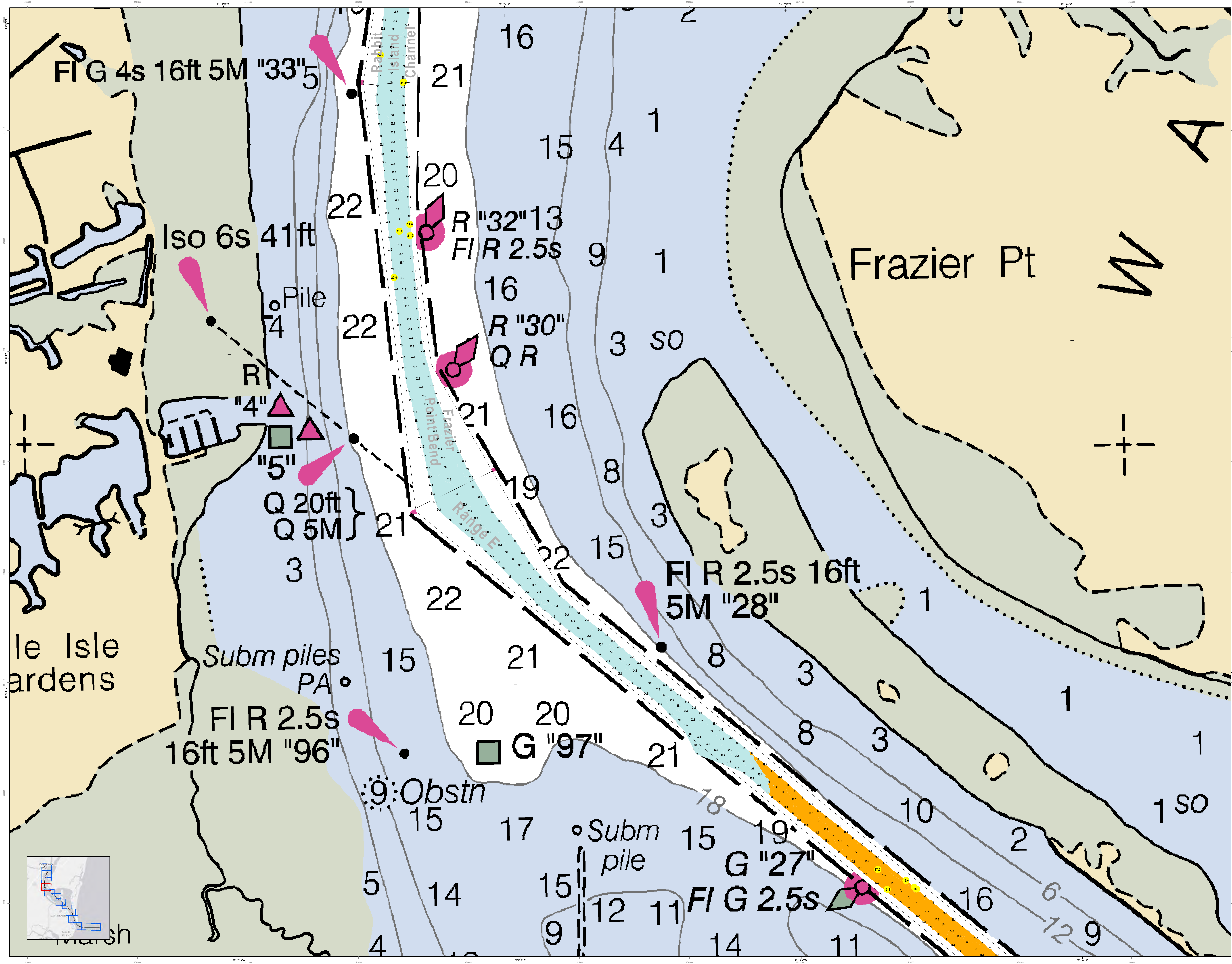
Legend:
Obstruction
Pile
Subm pile
G "97"
G "27"
R "26"
G "25"
Obstrn
Piles
Subm pile

Designed By:	Survey Date:	Production Date:
Reviewed By:	Project Reference Number:	07 MAY 2018
Revised By:	Scale:	1:25,000
Projection:	Map Datum:	NAD 1983 StatePlane South Carolina FIPS 3800 Feet

Georgetown Harbor Channel Survey
The information depicted on this map represents the results of surveys made on the dates indicated and can only be considered as indicating the general location of the objects shown.

Concluded on: 26 APRIL 2018
Georgetown, South Carolina





U.S. Army Corps of Engineers
Charleston District

Georgetown Harbor Channel Survey
The information depicted on this map represents the results of surveys made on the dates indicated and can only be considered as indicating the general location of obstructions. It does not constitute a guarantee of accuracy or a warranty of any kind. The user is advised to exercise caution when navigating in the vicinity of the survey area.

Legend

- Soundings:** 1, 2, 3, 4, 5, 8, 9, 10, 11, 12, 14, 15, 16, 17, 18, 19, 20, 21, 22, 30
- Obstructions:** Obstruction (black dot), Obstruction (pink triangle), Obstruction (yellow triangle)
- Navigational Aids:** Light (pink symbol), Buoy (yellow symbol)
- Other:** Submerged pile (black dot), Obstruction (black symbol)

Scale: 1 inch = 250 feet

Production Date: 07 MAY 2018

Survey Date: 26 APR 2018

Project Reference Number: 13C00013

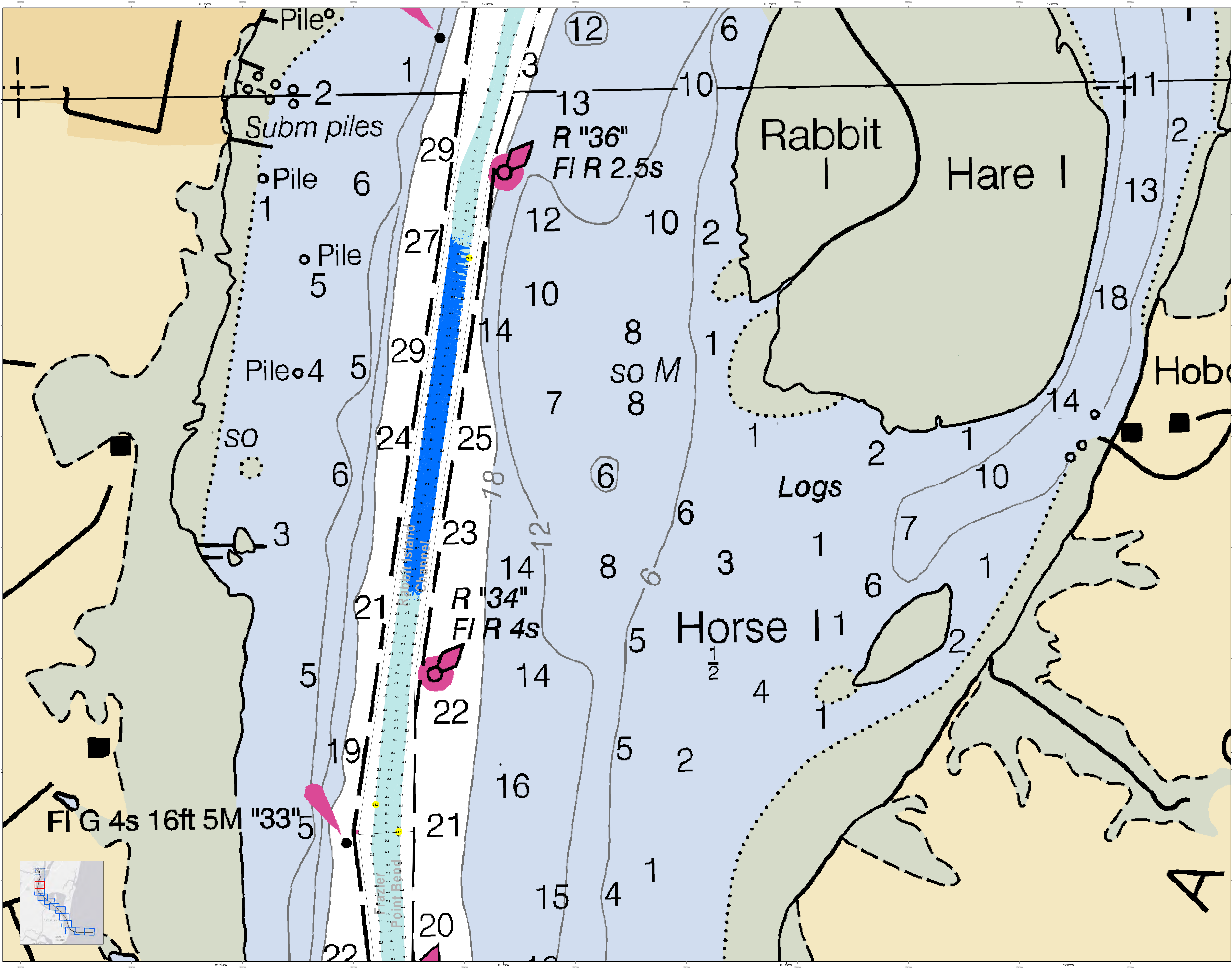
Sheet Title: CONDITION

U.S. Army Corps of Engineers
CHARLESTON DISTRICT
SOUTH CAROLINA
SAVANNAH BRANCH
300 HARGRAVE AVE
CHARLESTON, SC 29403
CE/AS/USACE/AR/AVAIL

Georgetown, South Carolina

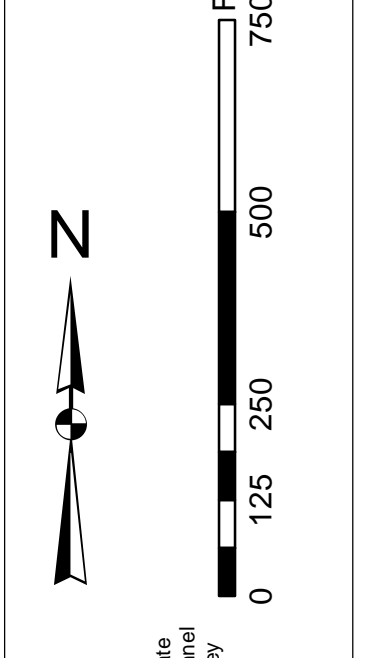
SHEET REFERENCE NUMBER: C001

SHEET 10 OF 13



In its capacity as the U.S. Army Corps of Engineers, Charleston District Office, Special District Office, Charleston, South Carolina, has prepared this chart for the purpose of providing information to the public. This chart is not a navigational aid and should not be used for navigation. It is the user's responsibility to determine the accuracy of the information contained herein and to use it in accordance with applicable laws and regulations. The U.S. Army Corps of Engineers does not assume any liability for any errors or omissions in this chart. This chart is not to be used for navigation.

Projection Note:
1. This chart is projected to the North American Datum of 1983 (NAD 83).
2. The horizontal scale is 1 inch = 250 feet.
3. The vertical scale is 1 inch = 10 feet.
4. The chart is based on the datum of 1983.
5. The chart is based on the datum of 1983.

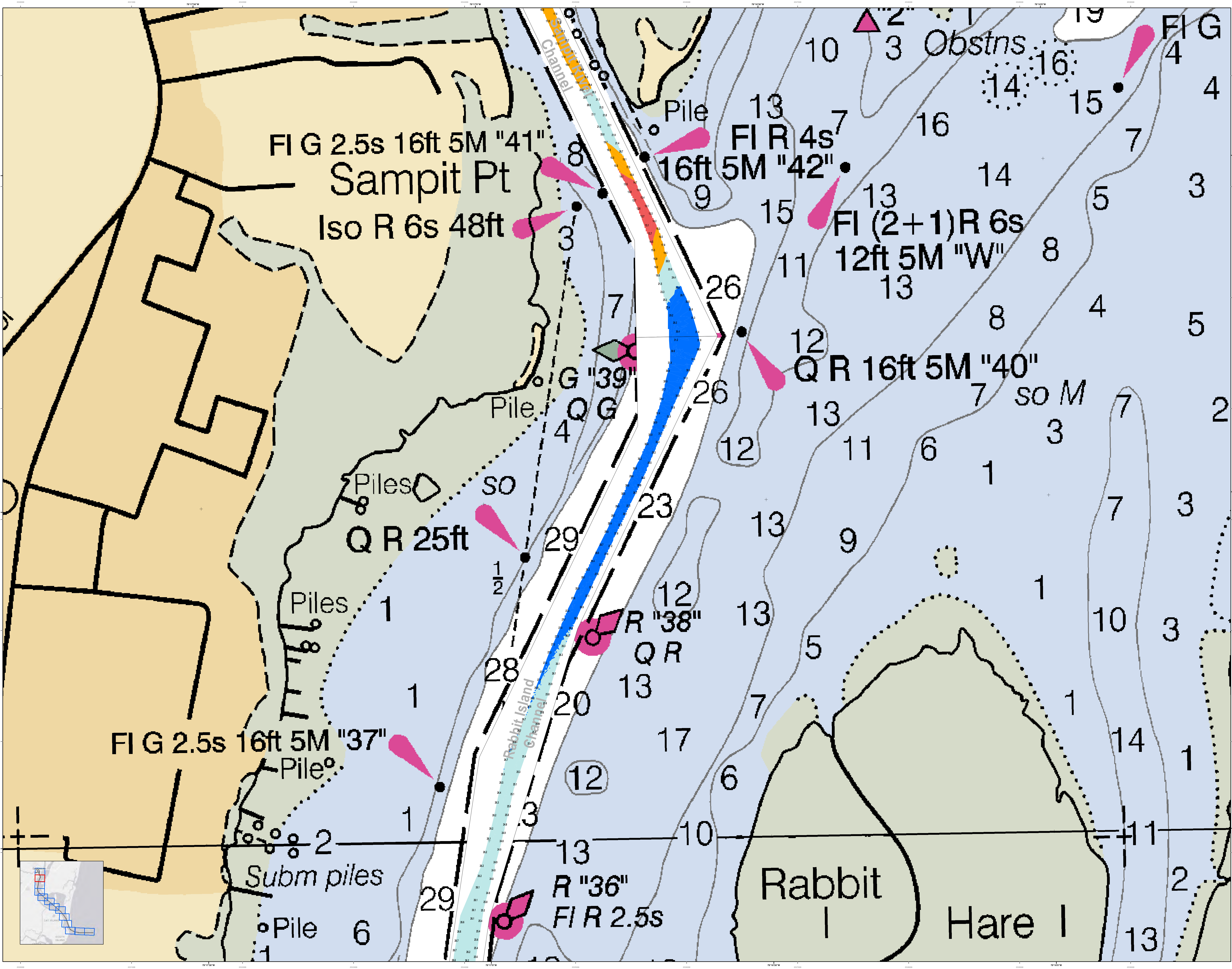


Legend:
1. Submerged Structure
2. Obstruction
3. Light
4. Buoy
5. Daymark
6. Beacon
7. Spar Light
8. Daymark
9. Light
10. Buoy
11. Daymark
12. Beacon
13. Spar Light
14. Daymark
15. Light
16. Buoy
17. Daymark
18. Beacon
19. Spar Light
20. Daymark
21. Light
22. Buoy
23. Daymark
24. Beacon
25. Spar Light
26. Daymark
27. Light
28. Buoy
29. Daymark

Scale:
1 inch = 250 feet
1:250

Designed By:	U.S. Army Corps of Engineers	Produced By:	U.S. Army Corps of Engineers
Reviewed By:	U.S. Army Corps of Engineers	Project Reference Number:	PC001D
Revised Date:	28 APR 2018	Scale:	1 inch = 250 feet
Revision:	1	Condition:	CONDITION
Project:	MAD 1893 StatePlane South Carolina FPS 3900 Feet		

Georgetown Harbor Channel Survey
The information depicted on this map represents the results of surveys made on the dates indicated and can only be considered as indicating the general location of the structure. It is not to be used for navigation.
Concluded on: 28 APRIL 2018
Georgetown, South Carolina



Disclaimer:
This chart is a representation of the data available at the time of publication. It is not intended to be used for navigation. The Corps of Engineers is not responsible for any errors or omissions. Users are encouraged to use all prudent safety measures.

Projection Note:
This chart is projected on the North Carolina State Plane (NAD 83) datum. The datum is the mean sea level at the time of the survey. The datum is not the same as the datum used in other charts. Users are encouraged to use all prudent safety measures.

Scale:
1 inch = 250 feet

Legend:
 - Blue: 16ft 5M "W"
 - Yellow: 12ft 5M "W"
 - Red: 10ft 5M "W"
 - Orange: 8ft 5M "W"
 - Green: 6ft 5M "W"
 - Light Blue: 4ft 5M "W"
 - Dark Blue: 2ft 5M "W"
 - Pink: Obstructions
 - Black: Piles
 - Dashed Line: Channel Boundary
 - Solid Line: Bank
 - Dotted Line: Submerged Piles

Production Date: 07 MAY 2018
Survey Date: 26 APR 2018
Project Reference Number: 1803001D
Scale: 1 inch = 250 feet
Projection: NAD 1983 StatePlane South Carolina FIPS 3900 Feet

Georgetown Harbor Channel Survey
 The information depicted on this map represents the results of surveys made on the dates indicated and can only be considered as indicating the general location of the objects shown.
 Concluded on: 26 APRIL 2018
 Georgetown, South Carolina

SHEET REFERENCE NUMBER:
C001
SHEET 12 OF 13

As shown on this U.S. Army Corps of Engineers, Charleston District Office, Special Data Sheet, the data shown on this map represents the results of a survey made on the dates indicated and can only be considered as indicating the general location of the structure or structures shown. It is not intended to be used for any purpose other than that for which it was prepared. The Corps of Engineers is not responsible for any errors or omissions in this data sheet or for any consequences arising therefrom. This data sheet is intended to be used for general information only and is not intended to be used for any other purpose.

Vertical Datum: Mean Sea Level (MSL)
Horizontal Datum: North American Datum of 1983 (NAD 83)

Legend

Channel Name:
 1. Steelmill Channel
 2. Bypass Channel
 3. Papermill Channel

Structure Name:
 1. Bridge
 2. Ramp
 3. Pile
 4. Subm piles
 5. Obstrn

Material:
 1. Steel
 2. Concrete
 3. Wood
 4. Other

Notes:
 1. Structure is in good condition.
 2. Structure is in poor condition.
 3. Structure is in very poor condition.
 4. Structure is in critical condition.

Designed By:	U.S. Army Corps of Engineers, Charleston District Office	Survey Date:	26 APR 2018	Production Date:	07 MAY 2018
Reviewed By:	U.S. Army Corps of Engineers, Charleston District Office	Project Reference Number:	13C00D	Sheet Reference Number:	C001
Scale:	1 inch = 250 feet	Scale:	1 inch = 250 feet	Scale:	1 inch = 250 feet
Prepared By:	U.S. Army Corps of Engineers, Charleston District Office	Project Reference Number:	13C00D	Sheet Reference Number:	C001
Project:	13C00D	Project Reference Number:	13C00D	Sheet Reference Number:	C001

Georgetown Harbor Channel Survey
 The information depicted on this map represents the results of surveys made on the dates indicated and can only be considered as indicating the general location of the structure or structures shown. It is not intended to be used for any purpose other than that for which it was prepared. The Corps of Engineers is not responsible for any errors or omissions in this data sheet or for any consequences arising therefrom. This data sheet is intended to be used for general information only and is not intended to be used for any other purpose.

Concluded on: 26 APRIL 2018
 Georgetown, South Carolina

SHEET REFERENCE NUMBER
 C001
 SHEET 13 OF 13

