

SHEET REFERENCE NUMBER
C010
 Page 1 of 2

Little River Inlet
 The information depicted on this map represents the results of surveys made on the dates indicated and can only be considered as indicating the general conditions existing at that time.
 Concluded on: **17 DEC 2015**
 Little River, South Carolina

U.S. ARMY ENGINEER DISTRICT CORPS OF ENGINEERS CHARLESTON, SOUTH CAROLINA SPATIAL DATA BRANCH 69A HAGOOD AVE. CHARLESTON, SC 29403 CESAC-GIS@USACE.ARMY.MIL	Designed By: eHydro Software v3.82 Reviewed By: MZB Reference Scale: 1 inch = 500 feet Projection: NAD 1983 StatePlane South Carolina FIPS 3900 Feet	Survey Date: 17 DEC 2015 Project Reference Number: CESAC-PRA-0002 Survey Type: Condition	Production Date: 15 JAN 2016
---	---	--	--

Shoalest Sounding

● Sounding
Sounding may cover several point areas and is calculated per reach quarter area
 *+ indicates sounding above MLLW

USCG Beacon

● Green
 ▲ Red
 □ White

USCG Buoy

● Green
 ● Red
 ● Coast Guard Racon

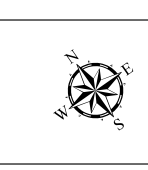
USCG Light

● White
 ● Yellow

Depth in feet

● Less than 4
 ■ 4 to 12
 □ Greater than 12

0 250 500 1,000 1,500 Feet



Production Notes:

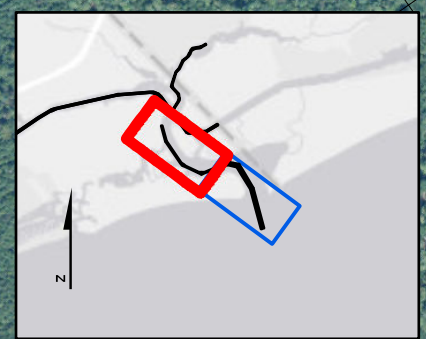
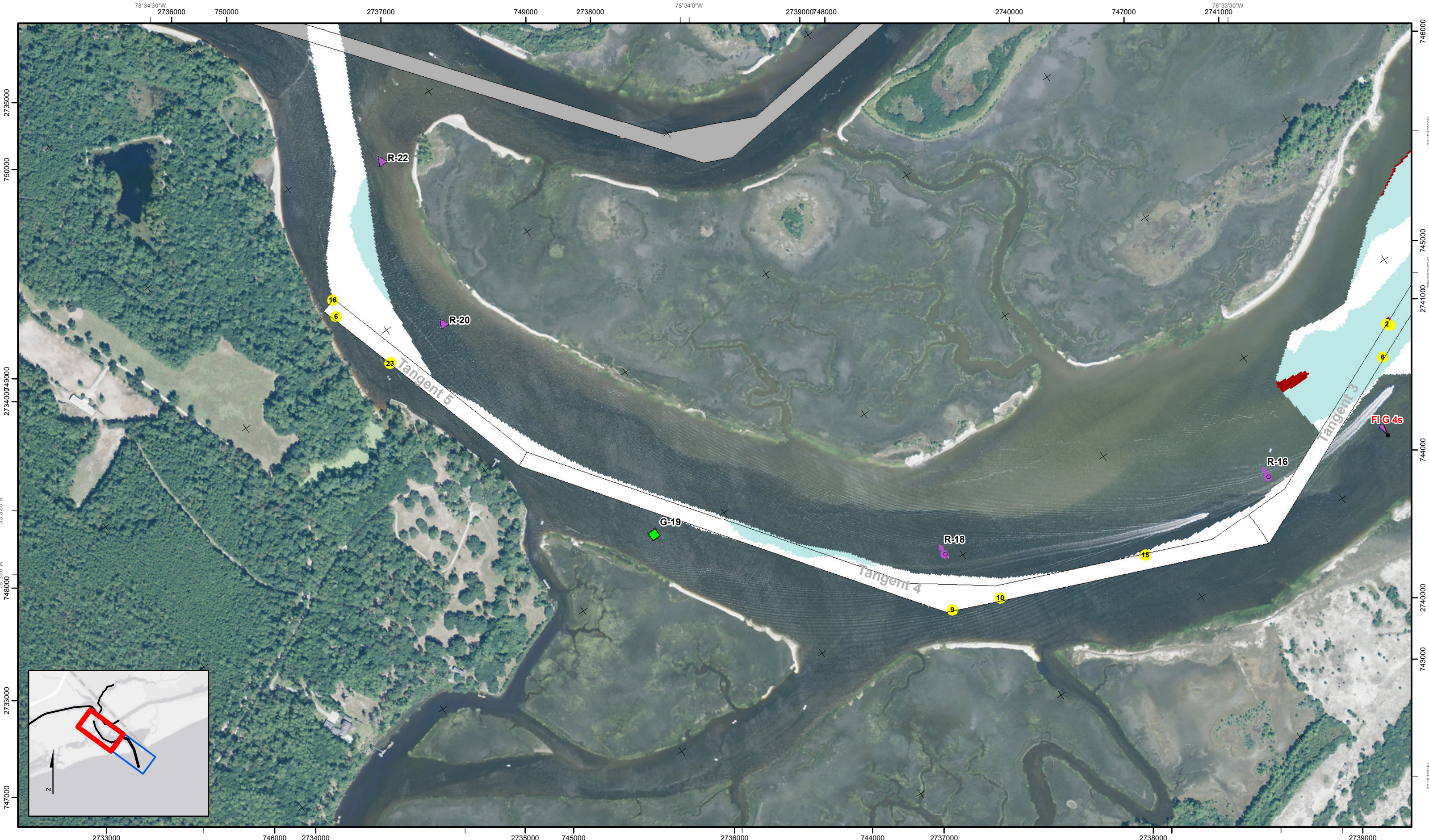
- The information depicted on this product is for plotting purposes only.
- Vector hydrographic data derived from surveys conducted by the USACE and approved partners.
- Soundings are in feet and refer to Mean Lower Low Water (MLLW).
- Raster Background: NAIP imagery dated 2013.

In no event shall the U.S. Army Corps of Engineers, Charleston District Office, Spatial Data Branch be liable for direct, indirect, incidental, consequential or special damages of any kind, including, but not limited to, loss of anticipated profits or benefits arising out of use of or reliance on the data.

These data sets have been developed from the best available sources. Although efforts have been made to ensure that the datasets are accurate and reliable, errors and variable conditions originating from physical sources used to develop the data may be reflected in the data supplied.

This product is not intended to be used for navigation.
 Mariners are encouraged to use all prudent safety measures.





Little River Inlet
 The information depicted on this map represents the results of surveys made on the dates indicated and can only be considered as indicating the general conditions existing at that time.
 Concluded on: **17 DEC 2015**
 Little River, South Carolina

U.S. ARMY ENGINEER DISTRICT
 CORPS OF ENGINEERS
 CHARLESTON, SOUTH CAROLINA
 SPATIAL DATA BRANCH
 69A HAGOOD AVE.
 CHARLESTON, SC 29403
 CESAC-GIS@USACE.ARMY.MIL

Designed By: eHydro Software v3.82	Survey Date: 17 DEC 2015	Production Date: 15 JAN 2016
Reviewed By: MZB	Absolute Scale: 1:6,000	Project Reference Number: CESAC-PRA-0002
Reference Scale: 1 inch = 500 feet	Survey Type: Condition	
Projection: NAD 1983 StatePlane South Carolina FIPS 3900 Feet		

Shoalest Sounding
 Sounding may cover several point areas and is calculated per reach quarter area
 "+" indicates sounding above MLLW

USCG Beacon
 Green Triangle
 Red Triangle
 White Triangle

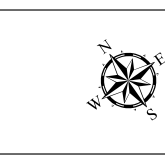
USCG Buoy
 Green Circle
 Red Circle
 Coast Guard Racon

USCG Light
 White Circle
 Yellow Circle

Depth in feet

Less than 4	4 to 12	Greater than 12
-------------	---------	-----------------

0 250 500 1,000 1,500 Feet



Production Notes:

- The information depicted on this product is for plotting purposes only.
- Vector hydrographic data derived from surveys conducted by the USACE and approved partners.
- Soundings are in feet and refer to Mean Lower Low Water (MLLW).
- Raster Background: NAIP imagery dated 2013.

In no event shall the U.S. Army Corps of Engineers, Charleston District Office, Spatial Data Branch be liable for direct, indirect, incidental, consequential or special damages of any kind, including, but not limited to, loss of anticipated profits or benefits arising out of use of or reliance on the data.

These data sets have been developed from the best available sources. Although efforts have been made to ensure that the datasets are accurate and reliable, errors and variable conditions originating from physical sources used to develop the data may be reflected in the data supplied.

This product is not intended to be used for navigation.
 Mariners are encouraged to use all prudent safety measures.

