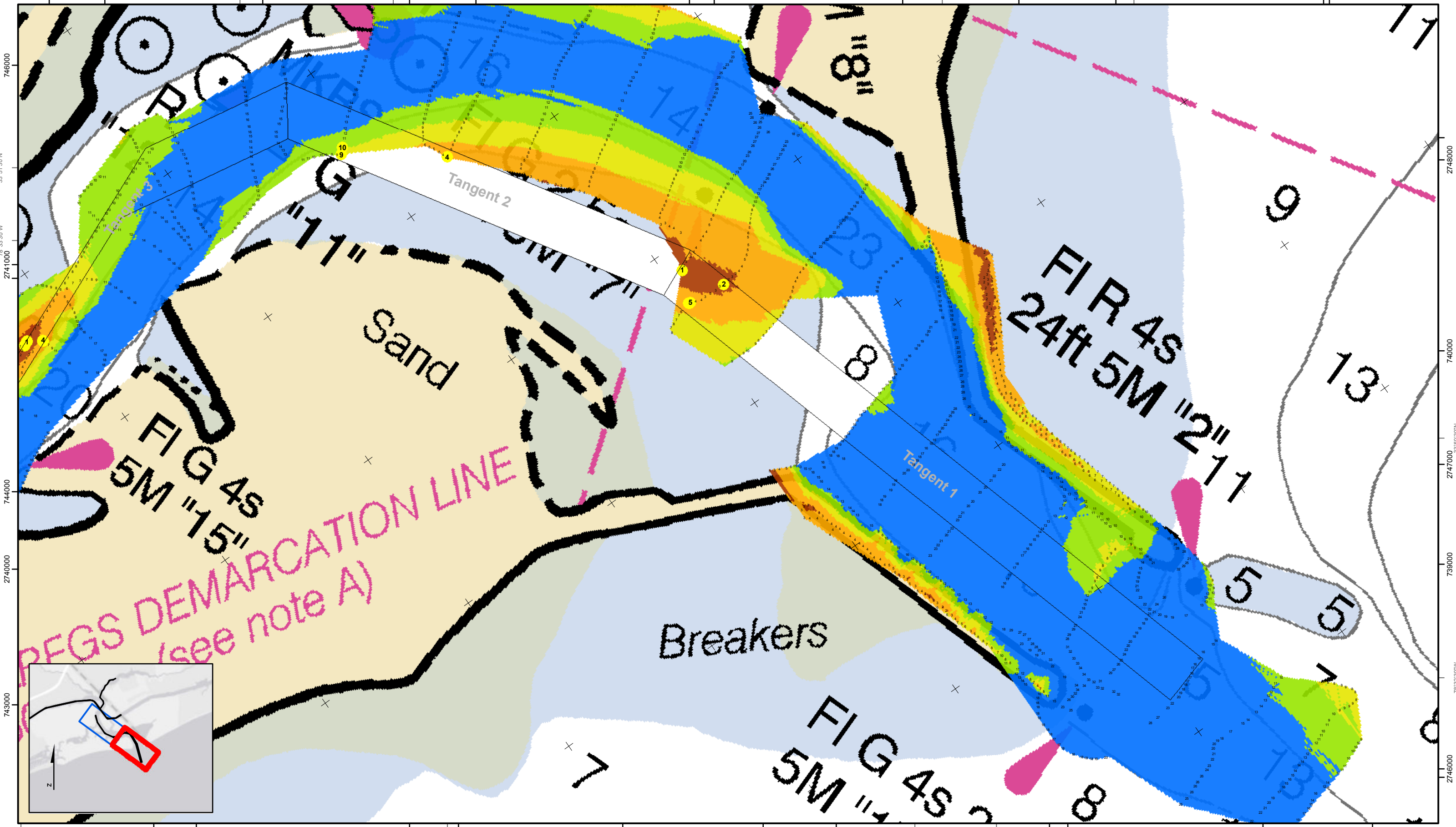


2742000 746000 33°51'30"N 2743000 78°33'0"W 745000 2744000 2745000/744000 2746000 78°32'30"W 743000 2747000 33°51'0"N 2748000



33°51'0"N
742000 2740000
743000

SHEET REFERENCE NUMBER
C010
Page 1 of 2

Little River Inlet
The information depicted on this map represents the results of surveys made on the dates indicated and can only be considered as indicating the general conditions existing at that time.
Concluded on: **02 NOV 2017**
Little River, South Carolina

U.S. ARMY ENGINEER DISTRICT CORPS OF ENGINEERS CHARLESTON, SOUTH CAROLINA	Designed By: eHydro Software v3.82	Survey Date: 02 NOV 2017	Production Date: 09 NOV 2017
SPATIAL DATA BRANCH 69A HAGOOD AVE CHARLESTON, SC 29403 CESAC-GIS@USACE.ARMY.MIL	Reviewed By: CCW	Project Reference Number: CESAC-PRA-0002	
	Reference Scale: 1 inch = 500 feet	Survey Type: CONDITION	
	Projection: NAD 1983 StatePlane South Carolina FIPS 3900 Feet		

Shoalest Sounding
Sounding may cover several point areas and is calculated per reach quarter area
*+ indicates sounding above MLLW

Green	USCG Beacon	Green	USCG Buoy	White	Depth in feet
Red	Red	Green	Green	Yellow	0-3
White	White	Red	Red	USCG Light	3 to 6
		Coast Guard Racon			6 to 9
					9 to 12
					Greater Than 12

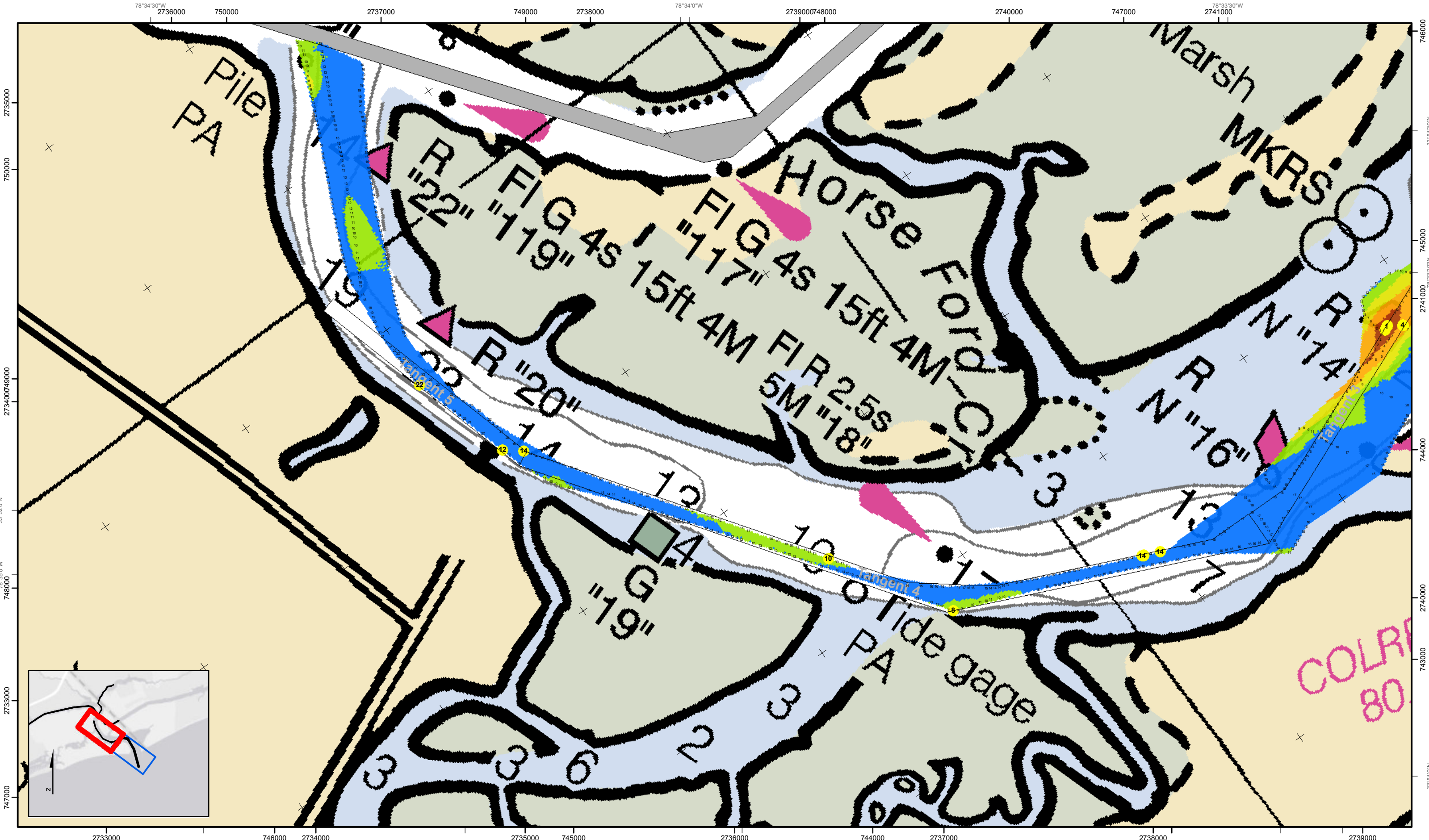
0 250 500 1,000 1,500 Feet

Production Notes:

- The information depicted on this product is for plotting purposes only.
- Vector hydrographic data derived from surveys conducted by the USACE and approved partners.
- Soundings are in feet and refer to Mean Lower Low Water (MLLW).
- Raster Background: NAD imagery dated 2013.

In no event shall the U.S. Army Corps of Engineers, Charleston District Office, Spatial Data Branch be liable for direct, indirect, incidental, consequential or special damages of any kind, including, but not limited to, loss of anticipated profits or benefits arising out of use of or reliance on the data. These data sets have been developed from the best available sources. Although efforts have been made to ensure that the datasets are accurate and reliable, errors and variable conditions originating from physical sources used to develop the data may be reflected in the data supplied. This product is not intended to be used for navigation. Mariners are encouraged to use all prudent safety measures.

U.S. Army Corps of Engineers
Charleston District



SHEET REFERENCE NUMBER
 C010
 Page 2 of 2

Little River Inlet
 The information depicted on this map represents the results of surveys made on the dates indicated and can only be considered as indicating the general conditions existing at that time.
 Concluded on: **02 NOV 2017**
 Little River, South Carolina

U.S. ARMY ENGINEER DISTRICT CORPS OF ENGINEERS CHARLESTON, SOUTH CAROLINA SPATIAL DATA BRANCH 69A HAGOOD AVE CHARLESTON, SC 29403 CESAC-GIS@USACE.ARMY.MIL	Designed By: eHydro Software v3.82 Reviewed By: CCW Reference Scale: 1 inch = 500 feet Projection: NAD 1983 StatePlane South Carolina FIPS 3900 Feet	Survey Date: 02 NOV 2017 Project Reference Number: CESAC-PRA-0002 Survey Type: CONDITION	Production Date: 09 NOV 2017
--	---	--	--

Shoalest Sounding
 ● Sounding
Sounding may cover several point areas and is calculated per reach quarter area
 *+ indicates sounding above MLLW

USCG Beacon	Green	USCG Buoy	Green	White	USCG Light
	Red		Red	Yellow	
	White	Coast Guard Racon			

Depth in feet
 0-3 3 to 6 6 to 9 9 to 12 Greater Than 12

Production Notes:
 1. The information depicted on this product is for plotting purposes only.
 2. Vector hydrographic data derived from surveys conducted by the USACE and approved partners.
 3. Soundings are in feet and refer to Mean Lower Low Water (MLLW).
 4. Raster Background: NAIP imagery dated 2013.
 In no event shall the U.S. Army Corps of Engineers, Charleston District Office, Spatial Data Branch be liable for direct, indirect, incidental, consequential or special damages of any kind, including, but not limited to, loss of anticipated profits or benefits arising out of use of or reliance on the data.
 These data sets have been developed from the best available sources. Although efforts have been made to ensure that the datasets are accurate and reliable, errors and variable conditions originating from physical sources used to develop the data may be reflected in the data supplied.
 This product is not intended to be used for navigation.
 Mariners are encouraged to use all prudent safety measures.