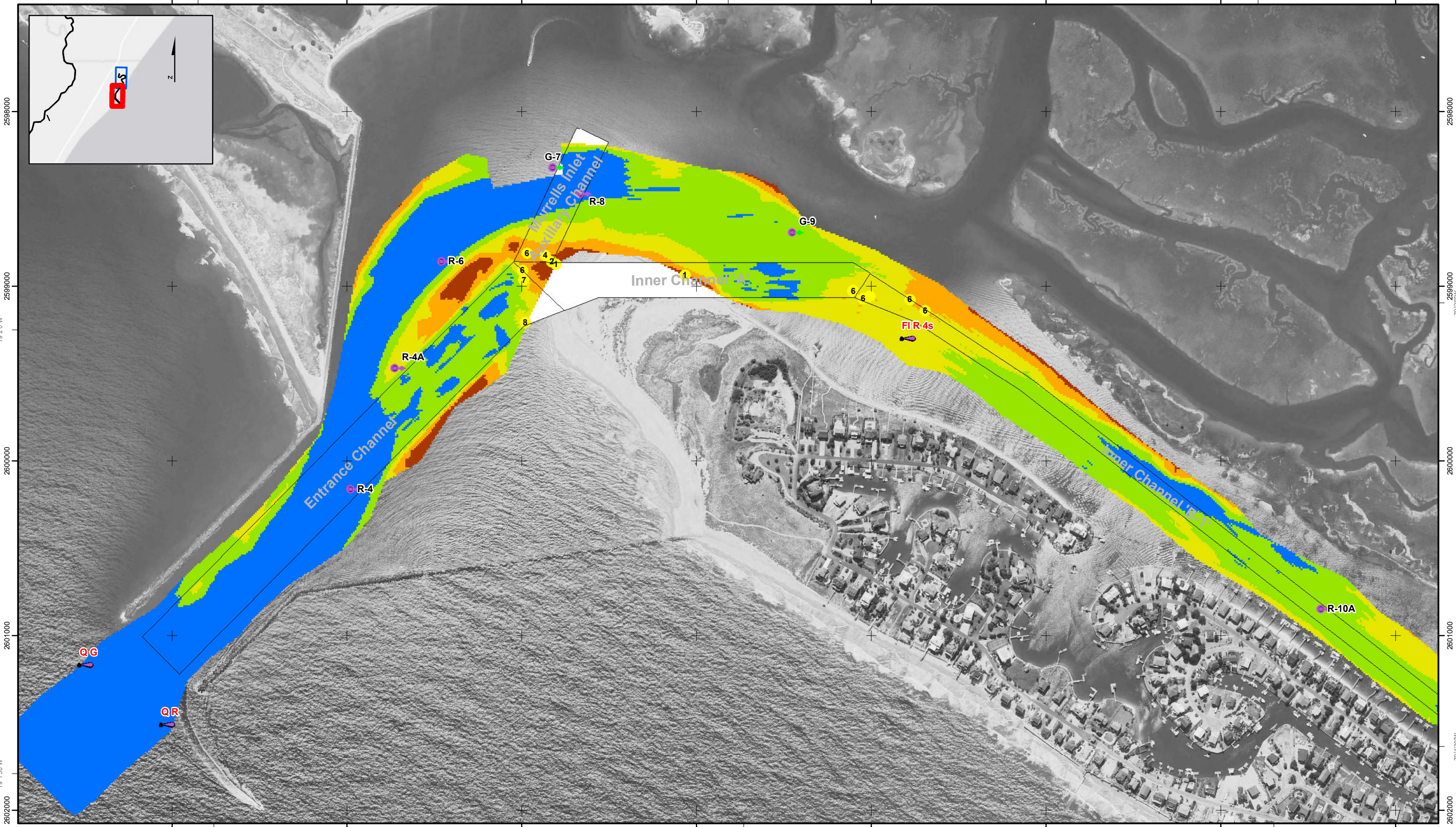


621000 33°31'30"N 622000 623000 624000 33°32'0"N 625000 626000 627000 33°32'30"N 628000



Murrells Inlet Channel
 The information depicted on this map represents the results of surveys made on the dates indicated and can only be considered as indicating the general conditions existing at that time.
 Concluded on: **DEC 2015, FEB-APR 2017**
 Murrells Inlet, South Carolina

Designed By: eHydro Software v3.82	Survey Date: VARIOUS	Production Date: 01 MAY 2017
Reviewed By: CCW	Absolute Scale: 1:6,000	Project Reference Number: CESAC-PRA-0040
Reference Scale: 1 inch = 500 feet	Survey Type: Condition and After Dredge	
Projection: NAD 1983 StatePlane South Carolina FIPS 3900 Feet		

Shoalest Sounding
 Sounding may cover several point areas and is calculated per reach quarter area
 "+" indicates sounding above MLLW

Sounding	USCG Beacon Green	USCG Buoy Green	White	USCG Buoy Red	USCG Light
Sounding	White	Coast Guard Racon	Yellow	USCG Light	

Depth in feet

0-3	3 to 6	6 to 9	9 to 12	Greater Than 12
-----	--------	--------	---------	-----------------

0 250 500 1,000 1,500

Production Notes:

- The information depicted on this product is for plotting purposes only.
- Vector hydrographic data derived from surveys conducted by the USACE and approved partners.
- Soundings are in feet and refer to Mean Lower Low Water (MLLW).
- Raster Background: PanShoeped Worldview-2 imagery dated 2014.

In no event shall the U.S. Army Corps of Engineers, Charleston District Office, Spatial Data Branch be liable for direct, indirect, incidental, consequential or special damages of any kind, including, but not limited to, loss of anticipated profits or benefits arising out of use of or reliance on the data.

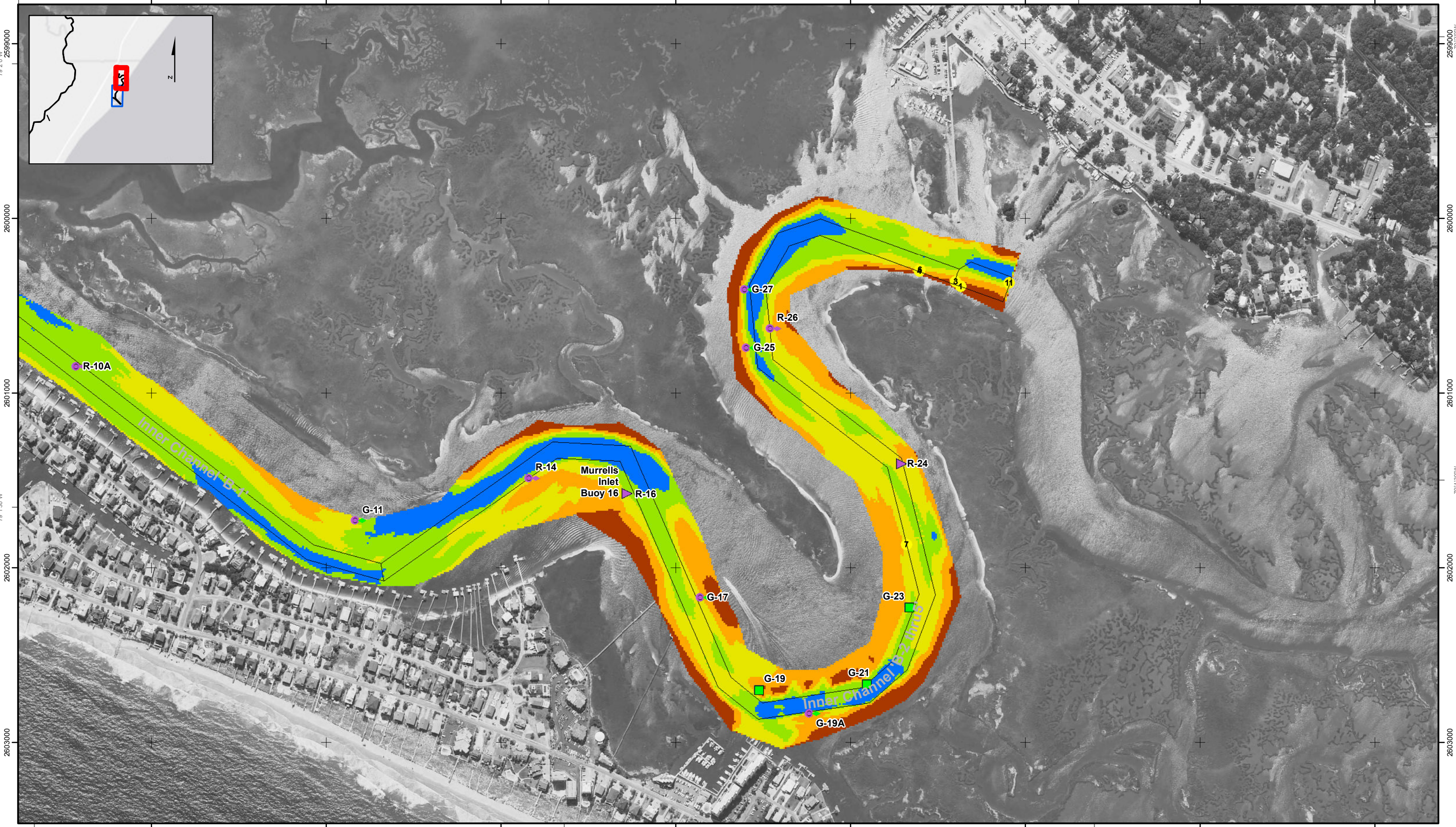
These data sets have been developed from the best available sources. Although efforts have been made to ensure that the datasets are accurate and reliable, errors and variable conditions originating from physical sources used to develop the data may be reflected in the data supplied.

This product is not intended to be used for navigation. Mariners are encouraged to use all prudent safety measures.

U.S. Army Corps of Engineers
 Charleston District

SHEET REFERENCE NUMBER
C004
 Page 1 of 2

33°32'30"N 628000 629000 630000 631000 632000 633000 634000 635000



33°32'30"N 628000 629000 630000 631000 632000 633000 634000 635000

Murrells Inlet Channel
 The information depicted on this map represents the results of surveys made on the dates indicated and can only be considered as indicating the general conditions existing at that time.
 Concluded on: **DEC 2015, FEB-APR 2017**
 Murrells Inlet, South Carolina

U.S. ARMY ENGINEER DISTRICT CORPS OF ENGINEERS CHARLESTON, SOUTH CAROLINA	Designed By: eHydro Software v3.82	Survey Date: VARIOUS	Production Date: 01 MAY 2017
SPATIAL DATA BRANCH 66A HAGOOD AVE. CHARLESTON, SC 29403 CESAC-GIS@USACE.ARMY.MIL	Reviewed By: CCW	Project Reference Number: CESAC-PRA-0040	Survey Type: Condition and After Dredge
	Reference Scale: 1 inch = 500 feet		Projection: NAD 1983 StatePlane South Carolina FIPS 3900 Feet

Shoalest Sounding
 Sounding may cover several point areas and is calculated per reach quarter area
 "+" indicates sounding above MLLW

USCG Beacon
 Green
 Red
 White

USCG Buoy
 Green
 Red
 Coast Guard Racon

USCG Light
 White
 Yellow

Depth in feet

0-3	3 to 6	6 to 9	9 to 12	Greater Than 12
-----	--------	--------	---------	-----------------

0 250 500 1,000 1,500 Feet

Production Notes:

- The information depicted on this product is for plotting purposes only.
- Vector hydrographic data derived from surveys conducted by the USACE and approved partners.
- Soundings are in feet and refer to Mean Lower Low Water (MLLW).
- Raster Background: Pan-sharpened WorldView-2 imagery dated 2014.

In no event shall the U.S. Army Corps of Engineers, Charleston District Office, Spatial Data Branch be liable for direct, indirect, incidental, consequential or special damages of any kind, including, but not limited to, loss of anticipated profits or benefits arising out of use of or reliance on the data.

These data sets have been developed from the best available sources. Although efforts have been made to ensure that the datasets are accurate and reliable, errors and variable conditions originating from physical sources used to develop the data may be reflected in the data supplied.

This product is not intended to be used for navigation.
 Mariners are encouraged to use all prudent safety measures.

U.S. Army Corps of Engineers
 Charleston District

SHEET REFERENCE NUMBER
C004
 Page 2 of 2