

Page 1 of 2

C004

SHEET  
REFERENCE  
NUMBER

**Murrells Inlet Channel**

The information depicted on this map represents the results of surveys made on the dates indicated and can only be considered as indicating the general conditions existing at that time.

Concluded on: **02 MAY 2018**

Murrells Inlet, South Carolina

U.S. ARMY ENGINEER DISTRICT  
CORPS OF ENGINEERS  
CHARLESTON, SOUTH CAROLINA

SPATIAL DATA BRANCH  
69A HAGOOD AVE  
CHARLESTON, SC 29403  
CESAC-GIS@USACE.ARMY.MIL

Designed By:  
**eHydro Software v3.82**

Reviewed By:  
**CCW**

Reference Scale:  
**1 inch = 500 feet**

Projection:  
**NAD 1983 StatePlane South Carolina FIPS 3900 Feet**

Survey Date:  
**02 MAY 2018**

Production Date:  
**31 JULY 2018**

Project Reference Number:  
**CESAC-PRA-0040**

Survey Type:  
**CONDITION**

**Shoalest Sounding**

Sounding

Sounding may cover several point areas and is calculated per reach quarter area

"+" indicates sounding above MLLW

**USCG Beacon**

Green

Red

White

**USCG Buoy**

Green

Red

Coast Guard Racon

USCG Light

**Depth in feet**

0-3

3 to 6

6 to 9

9 to 12

Greater Than 12

025010001500

Feet

W  
N  
S  
E

**Production Notes:**

1. The information depicted on this product is for plotting purposes only.

2. Vector hydrographic data derived from surveys conducted by the USACE and approved partners to Mean Lower Low Water (MLLW).

3. Soundings are in feet and refer to Mean Lower Low Water (MLLW).

4. Raster Background: PanSharpened Worldview-2 imagery dated 2014.

In no event shall the U.S. Army Corps of Engineers, Charleston District Office, Spatial Data Branch be liable for direct, indirect, incidental, consequential or special damages of any kind, including, but not limited to, loss of anticipated profits or benefits arising out of use of or reliance on the data.

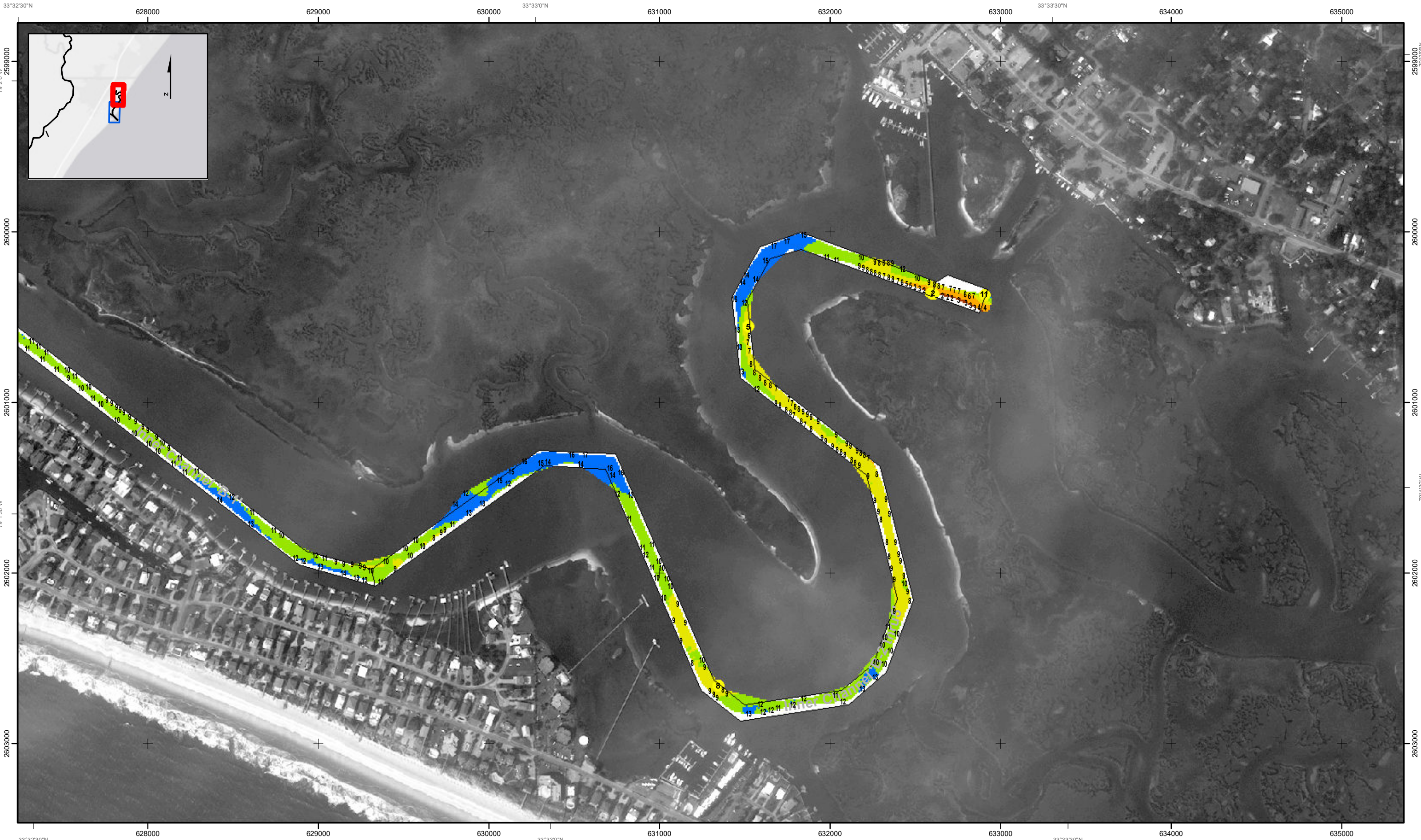
These data sets have been developed from the best available sources. Although efforts have been made to ensure that the datasets are accurate and reliable, errors and variable conditions originating from physical sources used to develop the data may be reflected in the data supplied.

This product is not intended to be used for navigation.

Mariners are encouraged to use all prudent safety measures.

U.S. Army Corps of Engineers  
Charleston District





33°32'30"N  
2603000  
628000

33°32'30"N  
2602000  
629000

33°32'30"N  
2601000  
630000

33°32'30"N  
2600000  
631000

33°32'30"N  
2599000  
632000

33°32'30"N  
2598000  
633000

33°32'30"N  
2597000  
634000

33°32'30"N  
2596000  
635000

79°13'0"W

79°13'30"W

79°14'0"W

79°14'30"W

79°15'0"W

79°15'30"W

79°16'0"W

79°16'30"W

33°32'30"N

33°33'0"N

33°33'30"N

33°34'0"N

33°34'30"N

33°35'0"N

33°35'30"N

33°36'0"N

2603000

2602000

2601000

2600000

2599000

2598000

2597000

2596000

33°32'30"N

33°33'0"N

33°33'30"N

33°34'0"N

33°34'30"N

33°35'0"N

33°35'30"N

33°36'0"N

2603000

2602000

2601000

2600000

2599000

2598000

2597000

2596000

Page 2 of 2

C004

SHEET  
REFERENCE  
NUMBER

**Murrells Inlet Channel**

The information depicted on this map represents the results of surveys made on the dates indicated and can only be considered as indicating the general conditions existing at that time.

Concluded on: **02 MAY 2018**

Murrells Inlet, South Carolina

U.S. ARMY ENGINEER DISTRICT  
CORPS OF ENGINEERS  
CHARLESTON, SOUTH CAROLINA

SPATIAL DATA BRANCH  
69A HAGOOD AVE  
CHARLESTON, SC 29403  
CESAC-GIS@USACE.ARMY.MIL

Designed By:  
**eHydro Software v3.82**

Reviewed By:  
**CCW**

Reference Scale:  
**1 inch = 500 feet**

Projection:  
**NAD 1983 StatePlane South Carolina FIPS 3900 Feet**

Survey Date:  
**02 MAY 2018**

Project Reference Number:  
**CESAC-PRA-0040**

Survey Type:  
**CONDITION**

**Shoalest Sounding**

● Sounding

*Sounding may cover several point areas and is calculated per reach quarter area*

*\*+ indicates sounding above MLLW*

**USCG Beacon**

■ Green

▲ Red

□ White

**USCG Buoy**

● Green

● Red

● Coast Guard Racon

○ White

○ Yellow

○ USCG Light

**Depth in feet**

0-3

3 to 6

6 to 9

9 to 12

Greater Than 12

0 250 500 1,000 1,500 Feet

**Production Notes:**

1. The information depicted on this product is for plotting purposes only

2. Vector hydrographic data derived from surveys conducted by the USACE and approved partners

3. Soundings are in feet and refer to Mean Lower Low Water (MLLW)

4. Raster Background: Panharpened Worldview-2 imagery dated 2014

In no event shall the U.S. Army Corps of Engineers, Charleston District Office, Spatial Data Branch be liable for direct, indirect, incidental, consequential or special damages of any kind, including, but not limited to, loss of anticipated profits or benefits arising out of use of or reliance on the data.

These data sets have been developed from the best available sources. Although efforts have been made to ensure that the datasets are accurate and reliable, errors and variable conditions originating from physical sources used to develop the data may be reflected in the data supplied.

**This product is not intended to be used for navigation.**

**Mariners are encouraged to use all prudent safety measures.**

U.S. Army Corps  
of Engineers

Charleston District