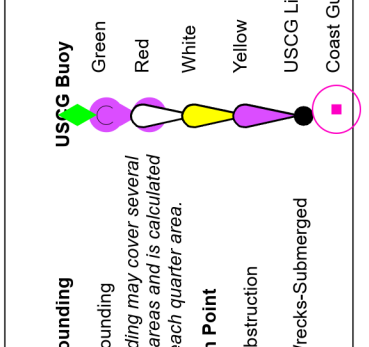
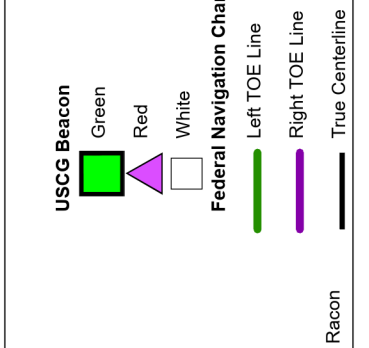
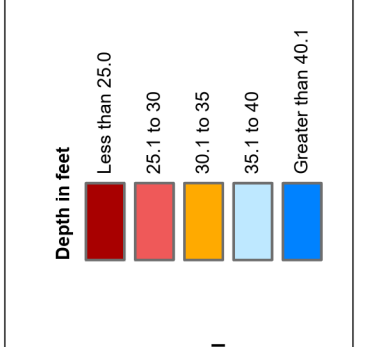
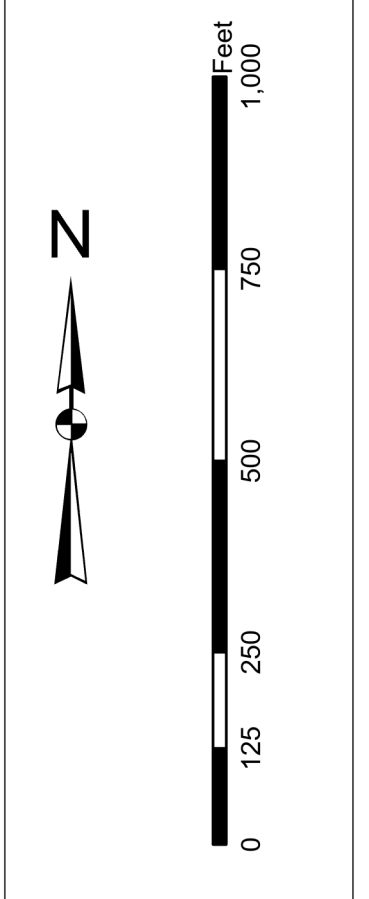


In its report to the U.S. Army Corps of Engineers, Charleston District Office, Special Data Branch, the contractor has provided the following information for the project. These data were derived from the best available information and are not intended to be used for any purpose other than that for which they were collected. The contractor is not responsible for any errors or omissions in the data and does not warrant the accuracy or completeness of the data. The contractor is not responsible for any errors or omissions in the data and does not warrant the accuracy or completeness of the data. The contractor is not responsible for any errors or omissions in the data and does not warrant the accuracy or completeness of the data.

- Production Notes:**
- The data were collected on the ground.
 - The data were collected on the ground.
 - The data were collected on the ground.



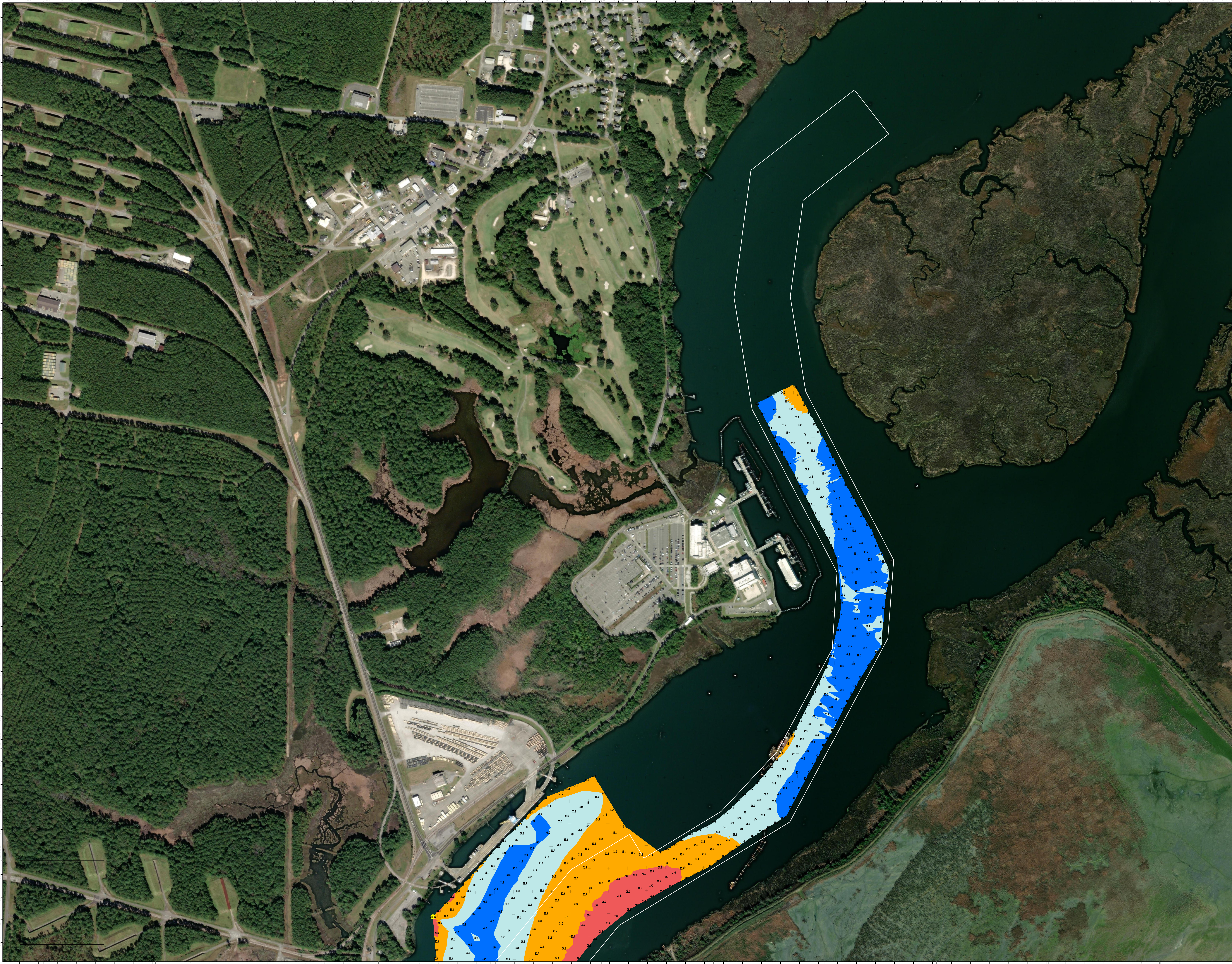
Survey Date:	17 APR 2024	Production Date:	22 APR 2024
Reviewed By:	CCW	Project Reference Number:	CESAC-PRJ0010
Scale:	1 inch = 250 feet	Projection:	NAD 1983 2011 StatePlane South Carolina FIPS 3800 F1 Intl

U.S. Army District:	CHARLESTON, SOUTH CAROLINA
Branch:	CHARLESTON, SOUTH CAROLINA
Project:	CHARLESTON, SOUTH CAROLINA

U.S. Army District:	CHARLESTON, SOUTH CAROLINA
Branch:	CHARLESTON, SOUTH CAROLINA
Project:	CHARLESTON, SOUTH CAROLINA

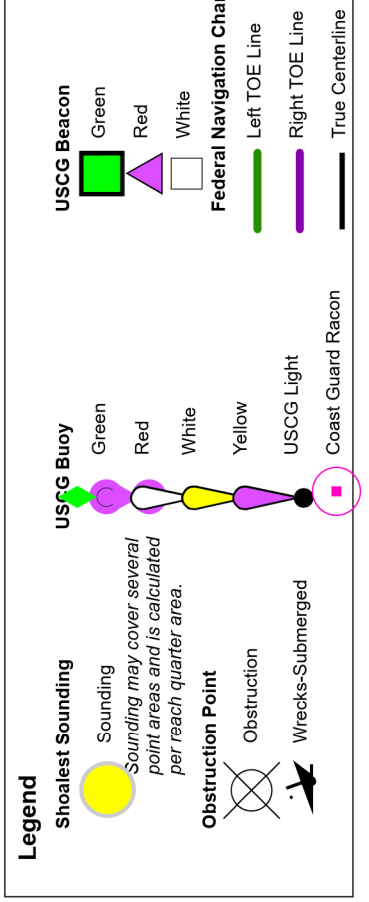
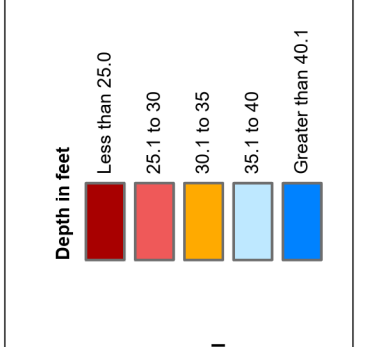
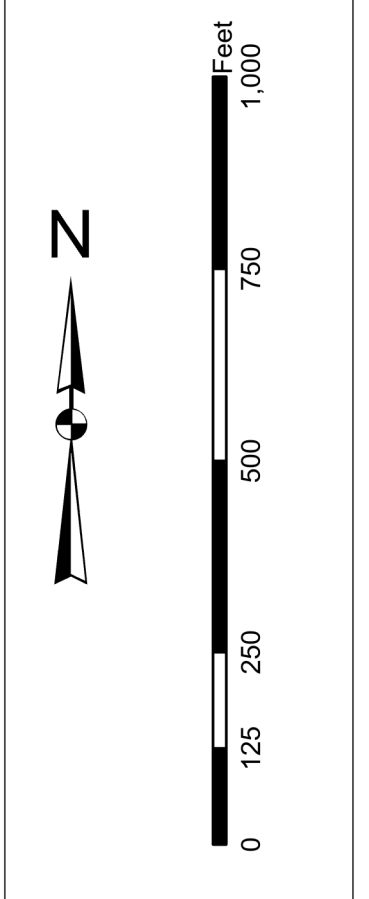
U.S. Army District:	CHARLESTON, SOUTH CAROLINA
Branch:	CHARLESTON, SOUTH CAROLINA
Project:	CHARLESTON, SOUTH CAROLINA

JB 01 IBC
The information depicted on this map represents the results of surveys made on the dates indicated and can only be considered as indicating the general condition of the project.
Concluded on: 17 APR 2024
Charleston, South Carolina



In its use of the U.S. Army Corps of Engineers, Charleston District Office, Special Data Sheets to be made pursuant to this report are limited to the use of appropriate profiles to determine existing out of channel material. These data sheets have been developed from the best available data and are not intended to be used for design purposes. The data are not to be used for design purposes. The data are not to be used for design purposes. The data are not to be used for design purposes.

Production Notes:
 1. This data was prepared on the basis of the following:
 2. Survey data collected by the Charleston District Office.
 3. Other data as indicated on the map.
 (MUTUAL)



U.S. ARMY CORPS OF ENGINEERS CHARLESTON DISTRICT CHARLESTON, SOUTH CAROLINA 857N, 8TH BRANCH 80A HARGOOD AVE CHARLESTON, SC 29403 CESAC-GIS/SUBAREA-ARMY/MIL	Survey Date: 17 APR 2024	Production Date: 22 APR 2024
Reviewed By: CCW	Absolute Scale: 1:3,000	Project Reference Number: CESAC-PRJ0010
Scale: 1 inch = 250 feet	Projection: NAD 1983 2011 StatePlane South Carolina FIPS 3800 F1 Intl	CONDITION

IB 01 IBC
 The information depicted on this map represents the results of surveys made on the dates indicated and can only be considered as indicating the general character of the terrain.
 Concluded on: 17 APR 2024
 Charleston, South Carolina