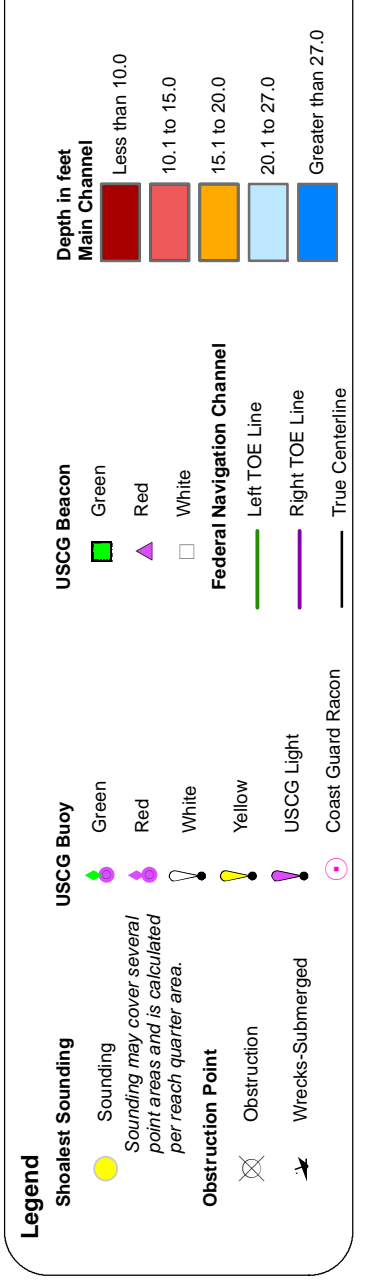
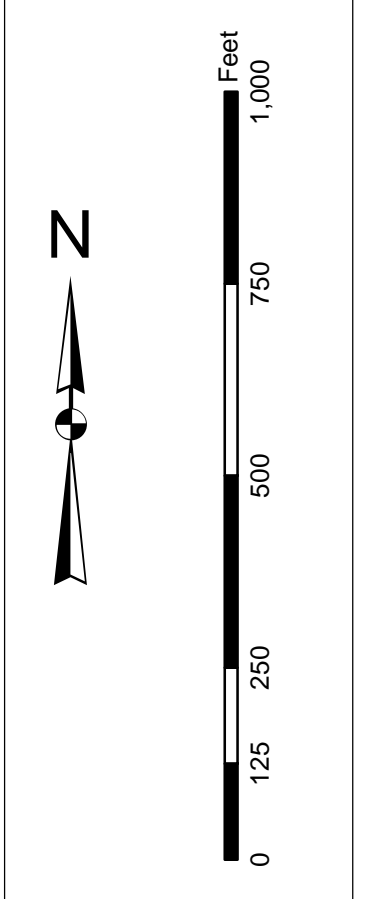


In the event of a conflict between the U.S. Army Corps of Engineers, Charleston District Office, Special Data Sheets and other data sheets, the Special Data Sheets shall prevail. The information on this map represents the results of surveys made on the dates indicated and can only be considered as indicating the general character of the data. It is not to be used for navigation. No warranty is made by the U.S. Army Corps of Engineers for the use of this data for purposes not intended by the U.S. Army Corps of Engineers. No liability is assumed for any loss or damage resulting from the use of this data for purposes not intended by the U.S. Army Corps of Engineers. No warranty is made by the U.S. Army Corps of Engineers for the use of this data for purposes not intended by the U.S. Army Corps of Engineers. No liability is assumed for any loss or damage resulting from the use of this data for purposes not intended by the U.S. Army Corps of Engineers.

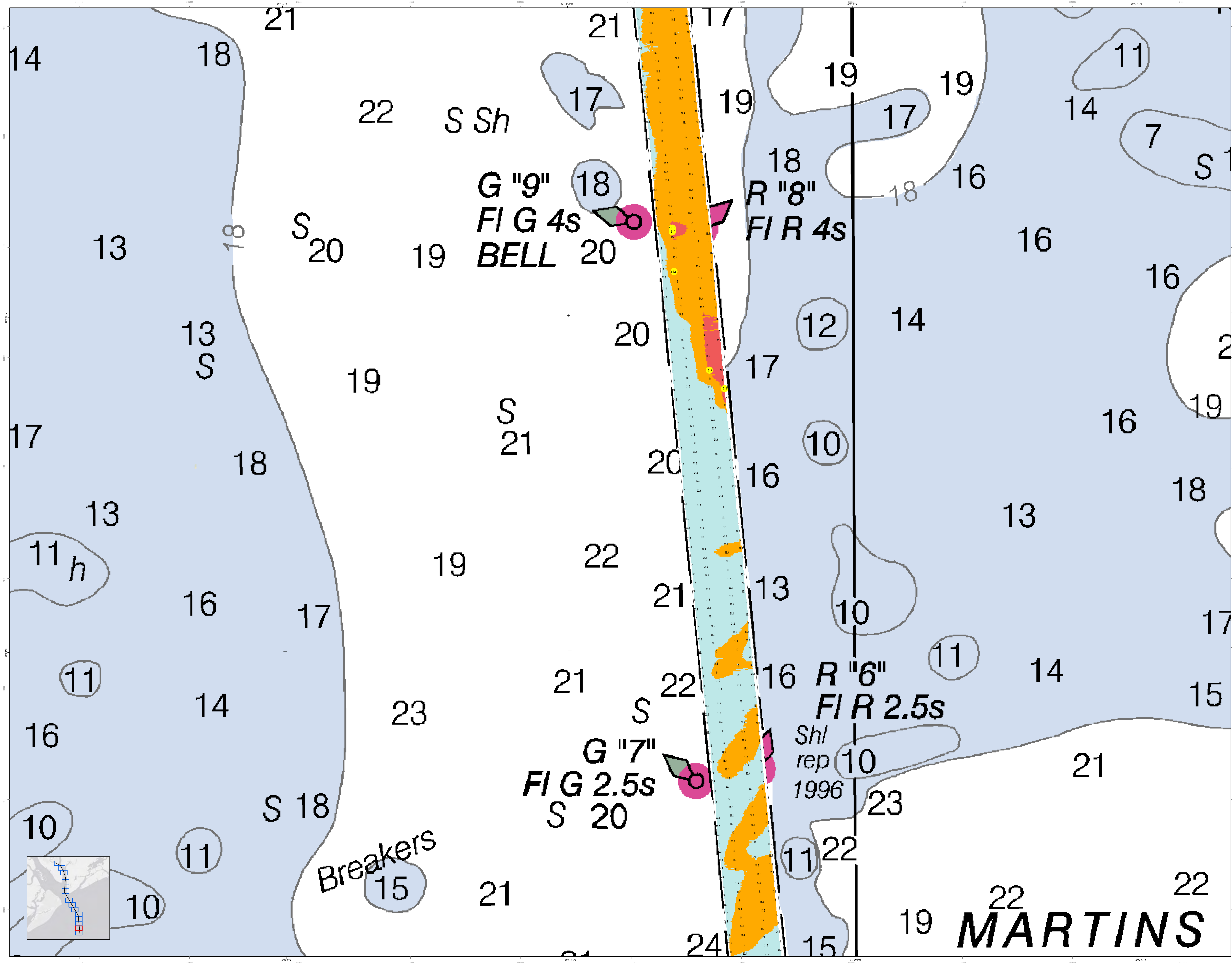
Production Notes:
1. This is a preliminary chart.
2. The chart is not to be used for navigation.
3. Soundings are in feet and meters.
4. The chart is not to be used for navigation.
5. No warranty is made by the U.S. Army Corps of Engineers for the use of this data for purposes not intended by the U.S. Army Corps of Engineers. No liability is assumed for any loss or damage resulting from the use of this data for purposes not intended by the U.S. Army Corps of Engineers.



Designed By:	Hydro Software v3.82	Production Date:	16 AUG 2018 12:22 AUG 2018
Reviewed By:	1:50,000	Project Reference Number:	PORT ROYAL
Revised:	1 inch = 250 feet	Survey Cycle:	CONDITION
Projection:	NAD 1983 StatePlane South Carolina FIPS 3200 Feet		

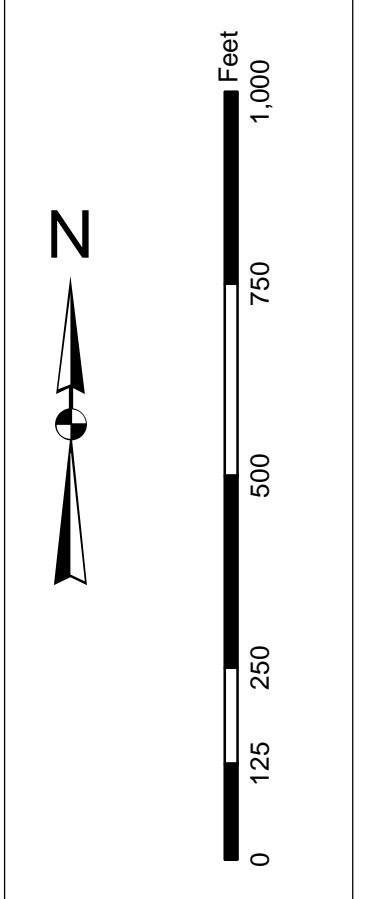
Port Royal Harbor Channel Survey
The information depicted on this map represents the results of surveys made on the dates indicated and can only be considered as indicating the general character of the data. It is not to be used for navigation. No warranty is made by the U.S. Army Corps of Engineers for the use of this data for purposes not intended by the U.S. Army Corps of Engineers. No liability is assumed for any loss or damage resulting from the use of this data for purposes not intended by the U.S. Army Corps of Engineers.

Concluded on: 16 AUGUST 2018
Port Royal, South Carolina



Disclaimer:
This chart is a representation of the data available at the time of publication. It is not a guarantee of accuracy. The user assumes all responsibility for the use of this chart. The Corps of Engineers is not responsible for any errors or omissions in this chart.

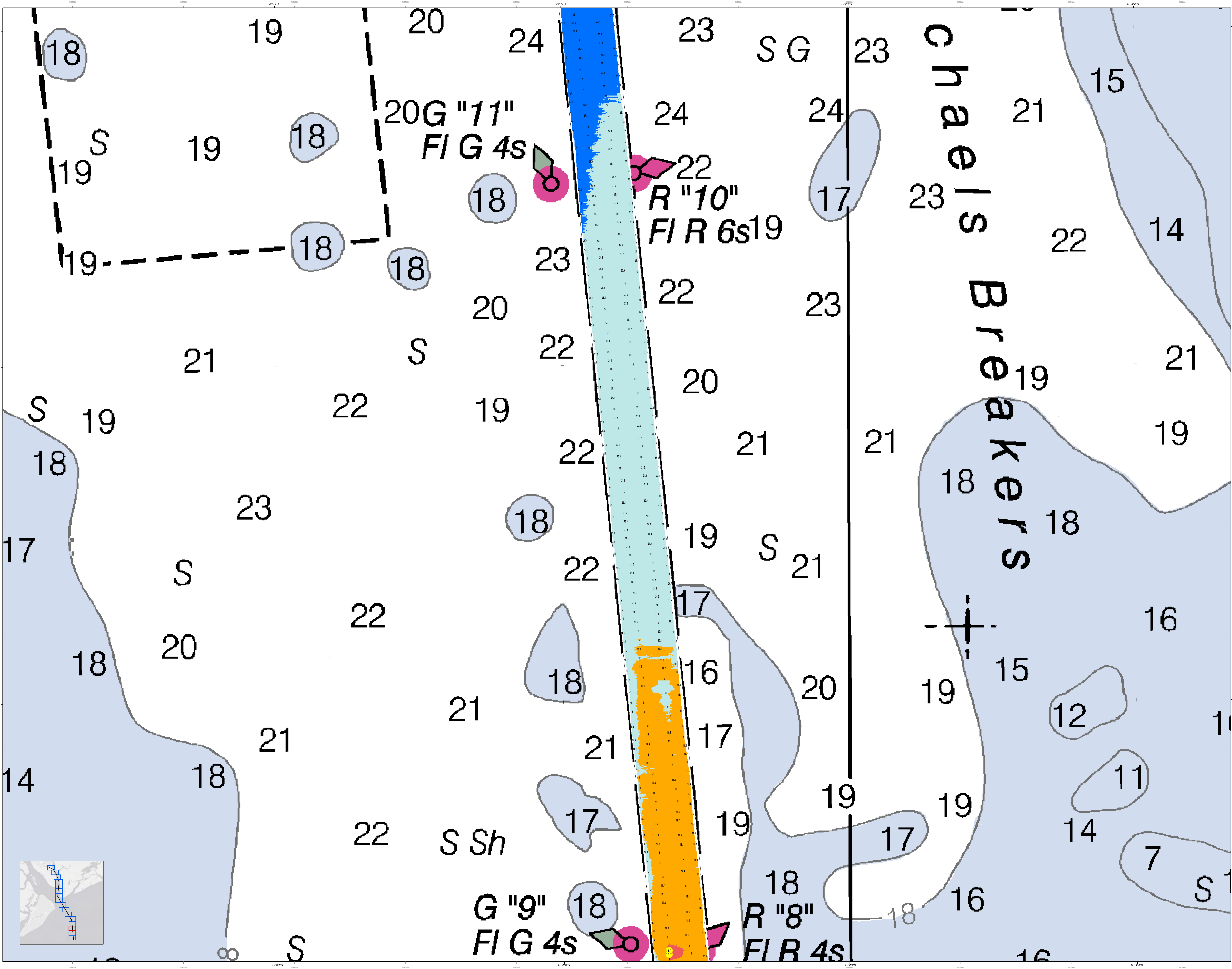
Legend:
 1. Soundings: 10 to 15, 16 to 20, 21 to 25
 2. Breakers: 15
 3. Navigational Aids: G '9' FIG 4s BELL 20, R '8' FIR 4s, G '7' FIG 2.5s S 20, R '6' FIR 2.5s
 4. Shl rep 1996



Symbol	Description
10	10 to 15
16	16 to 20
21	21 to 25
15	Breakers
G '9' FIG 4s BELL 20	Navigation Aid
R '8' FIR 4s	Navigation Aid
G '7' FIG 2.5s S 20	Navigation Aid
R '6' FIR 2.5s	Navigation Aid
Shl rep 1996	Shoal Report

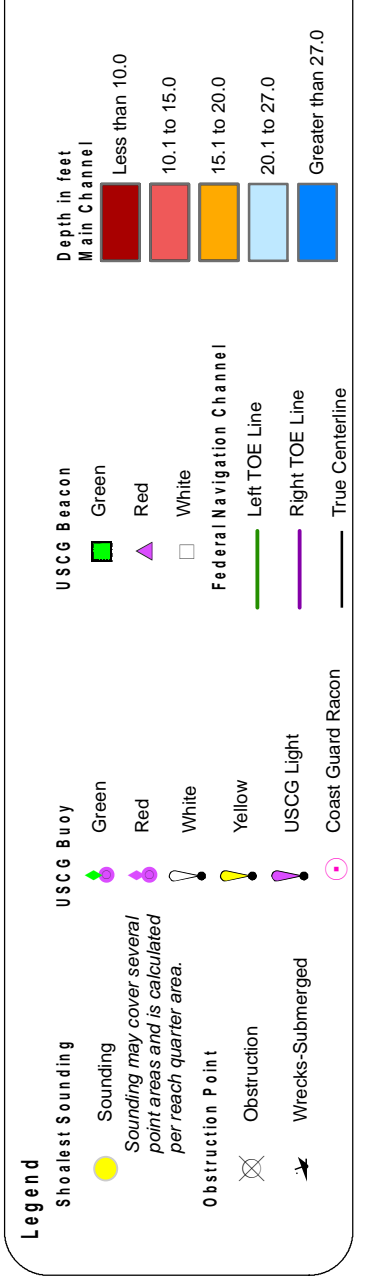
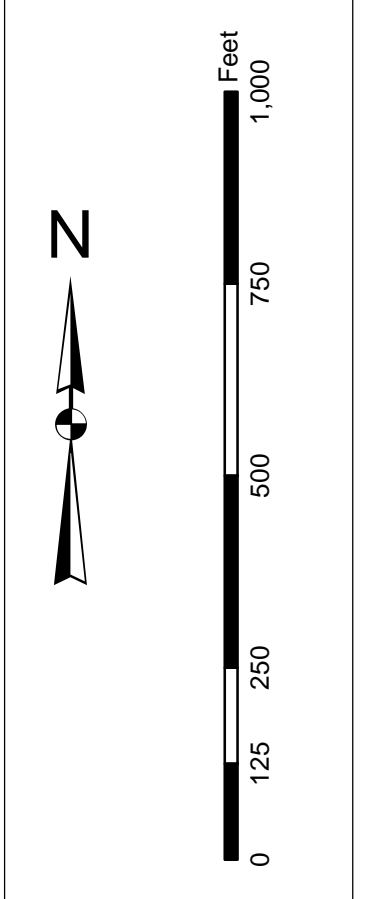
Designed By: J. H. ...	Production Date: 16 AUG 2018
Reviewed By: ...	Project Reference Number: ...
Scale: 1 inch = 250 feet	Scale: ...
Projection: NAD 1983 StatePlane South Carolina FIPS 3900 Feet	Scale: ...

Part 17 Hydrographic Survey
 The information depicted on this map represents the results of surveys made on the dates indicated and can only be considered as indicating the general character of the bottom. It is not a guarantee of accuracy. The user assumes all responsibility for the use of this chart.
 Concluded on: 16 AUGUST 2018
 Port Royal, South Carolina



In the Office of the U.S. Army Corps of Engineers, Charleston District Office, Special Data Sheets are made to order. A sheet is prepared for each project. These sheets have been developed from the data available in the District Office files. They are not to be used for any other purpose. The information on these sheets is not to be used for any other purpose. The information on these sheets is not to be used for any other purpose.

PRECISION STATE:
1. This is a preliminary chart.
2. The data on this chart are based on the best available information.
3. Soundings are in feet and tenths.
4. The datum is Mean Low Water.
5. The chart is not to be used for navigation.
6. The chart is not to be used for any other purpose.



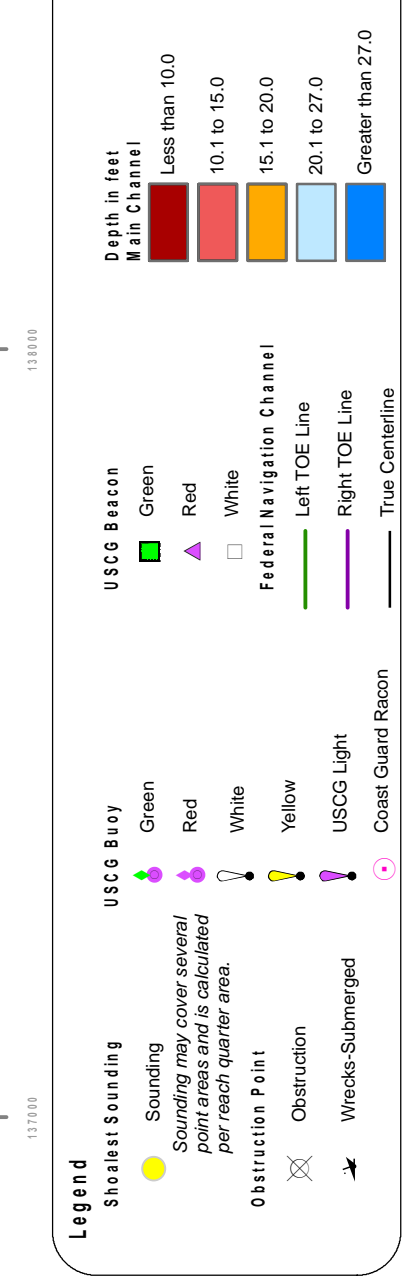
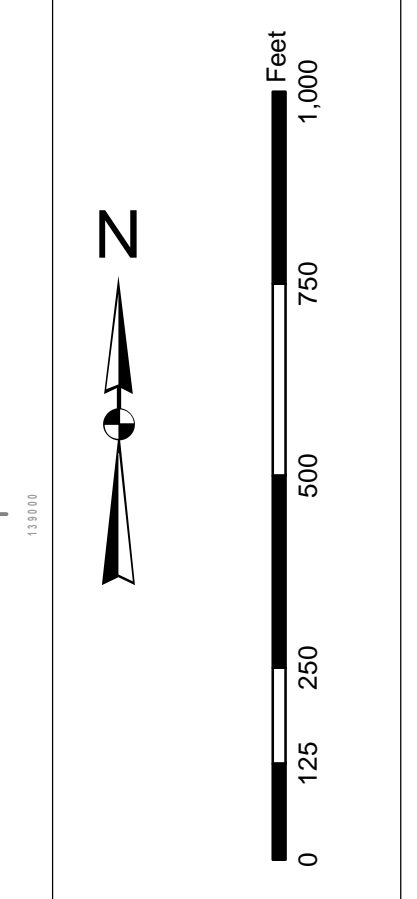
Designed By:	Hydro Software v3.02	Survey Date:	16 AUG 2018	Production Date:	22 AUG 2018
Reviewed By:	1:50,000	Project Reference Number:	PC00010	Project Reference Number:	PC00010
Scale:	1 inch = 250 feet	Scale:	CONDITION	Scale:	CONDITION
Projection:	NAD 1983 StatePlane South Carolina FIPS 3900 Feet	Projection:		Projection:	

Part 16 of the Charleston Survey
The information depicted on this map represents the results of surveys made on the dates indicated and can only be considered as indicating the general character of the bottom.

Concluded on: 16 AUGUST 2018
Perr Royal, South Carolina

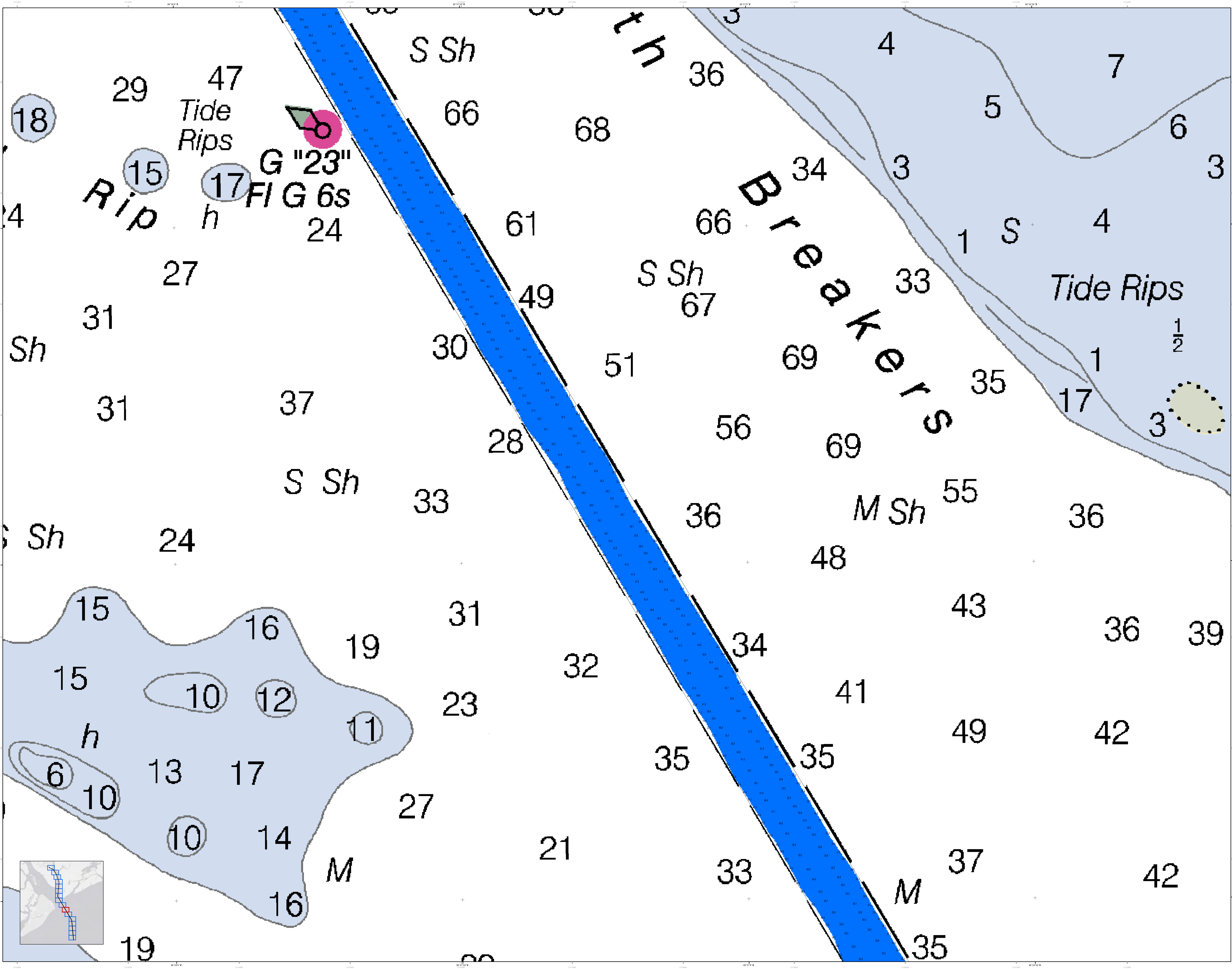
In accordance with the U.S. Army Corps of Engineers, Charleston District Office, Special Data Users Guide to the Hydrographic Survey Data, this map is intended to be used for navigation purposes only. It is not intended to be used for engineering purposes. The data on this map was derived from the most current available data. The data on this map was derived from the most current available data. The data on this map was derived from the most current available data.

PRECISION STATE:
1. This is a planning precision chart.
2. The data on this map was derived from the most current available data.
3. The data on this map was derived from the most current available data.



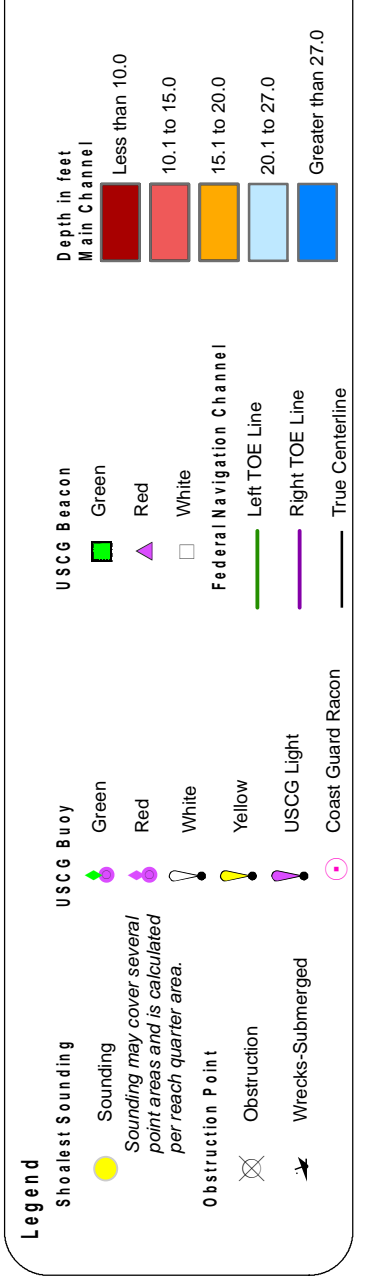
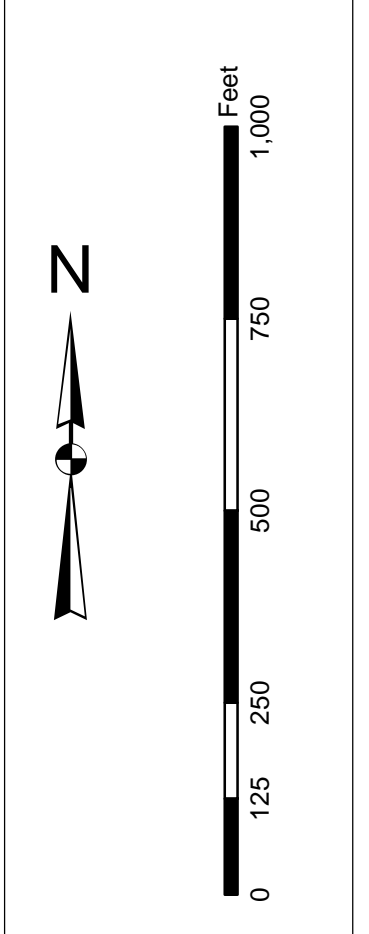
Designed By:	Hydro Software v3.02	Production Date:	16 AUG 2018 12Z AUG 2018
Reviewed By:	1:50,000	Project Reference Number:	PC0001D
Revised Date:	1 inch = 250 feet	Scale:	CONDITION
Projection:	NAD 1983 StatePlane South Carolina FIPS 3900 Feet		

Part of the Hydrographic Survey
The information depicted on this map represents the
results of surveys made on the dates indicated and
can only be considered as indicating the general
nature of the bottom. It is not intended to be used for
navigation purposes.
Concluded on: 16 AUGUST 2018
Perr Royal, South Carolina



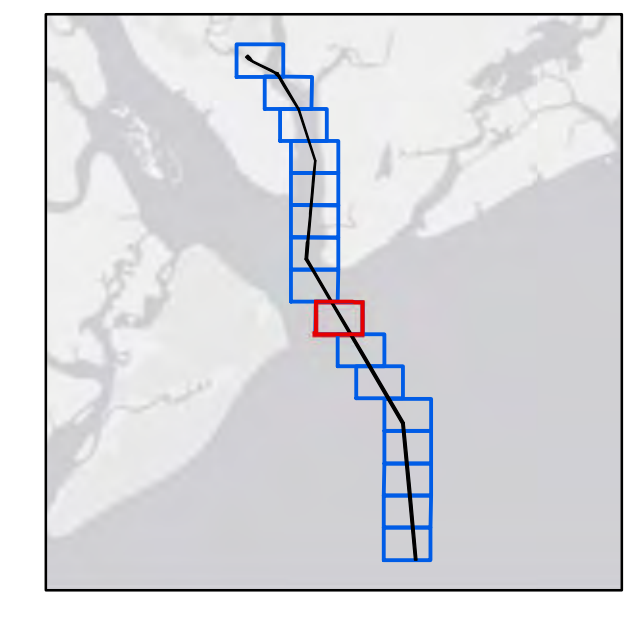
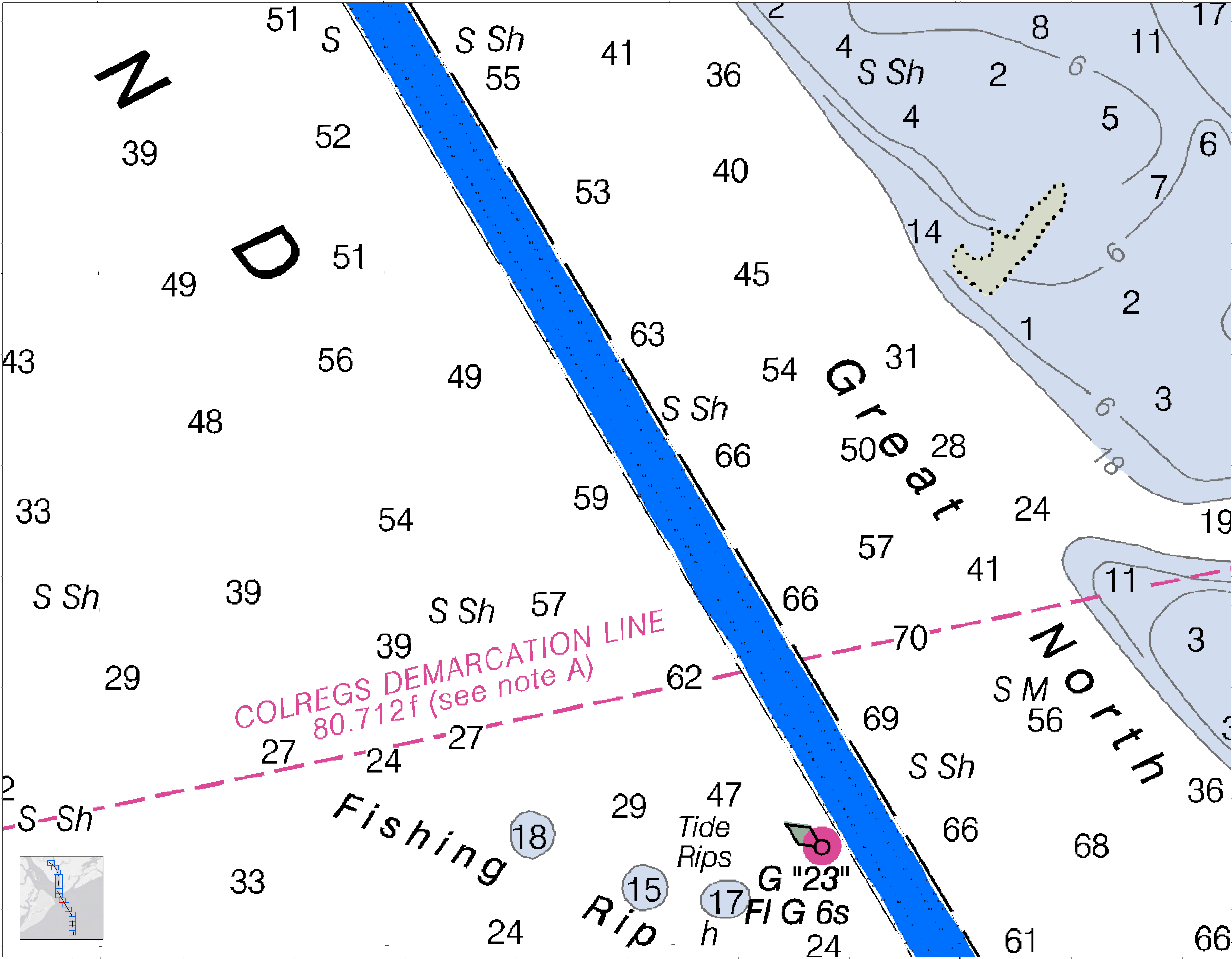
In the event that the U.S. Army Corps of Engineers, Charleston District Office, Special Data Branch is unable to locate, update, or correct the data used in this map, the user should be aware that the data may be outdated and that the user should verify the data before using it for any purpose. The user should also be aware that the data may be subject to change without notice and that the user should verify the data before using it for any purpose.

PRECISION STATE:
1. This map is produced primarily from electronic data.
2. The accuracy of this map is based on the accuracy of the data used to produce it.
3. Accuracy is not guaranteed.
4. Accuracy is not guaranteed.
5. Accuracy is not guaranteed.
6. Accuracy is not guaranteed.
7. Accuracy is not guaranteed.
8. Accuracy is not guaranteed.
9. Accuracy is not guaranteed.
10. Accuracy is not guaranteed.

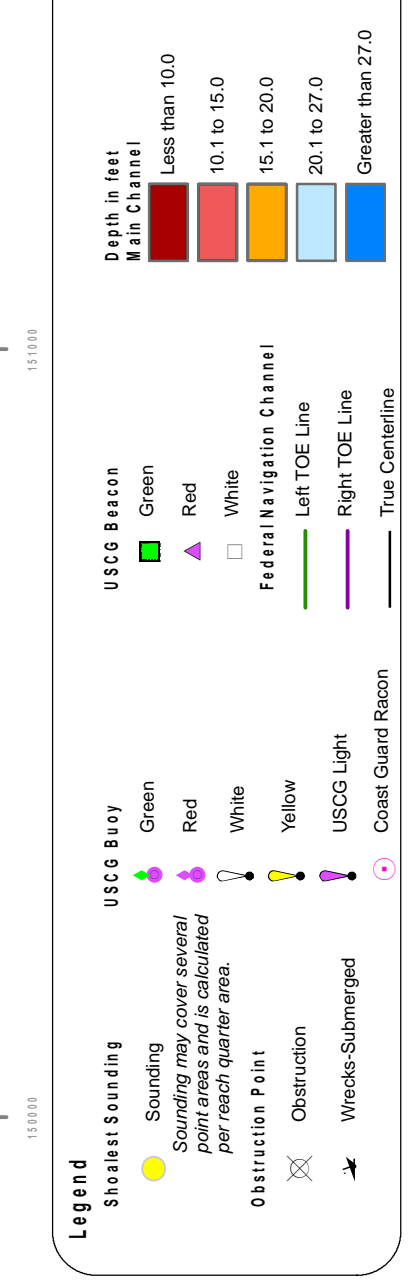
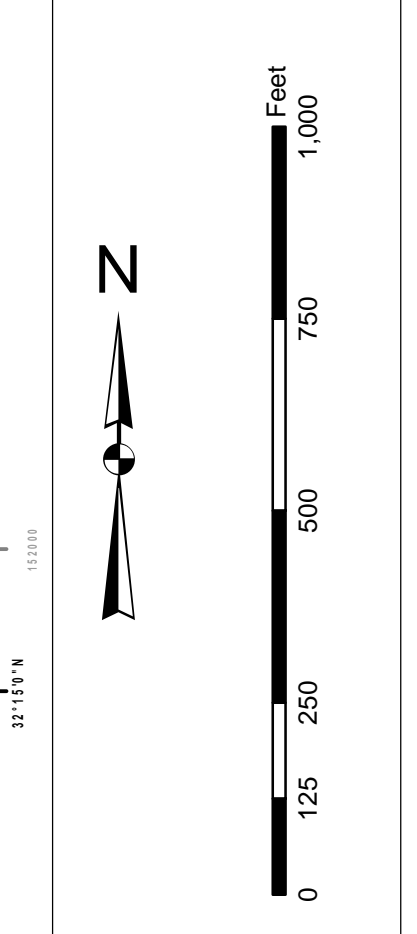


Designed By:	Hydro Software v3.02	Production Date:	16 AUG 2018 12:22 AUG 2018
Reviewed By:	1:5000	Project Reference Number:	1600010
Revised By:	1:5000	Survey Type:	CONDITION
Scale:	1 inch = 250 feet	Projection:	NAD 1983 StatePlane South Carolina FIPS 3200 Feet

Part 1601 Hydrographic Survey
The information depicted on this map represents the results of surveys made on the dates indicated and can only be considered as indicating the general location of the features shown. It is not intended to be used for navigation or other purposes without the aid of other charts and information.
Concluded on: 16 AUGUST 2018
Perr Royal, South Carolina

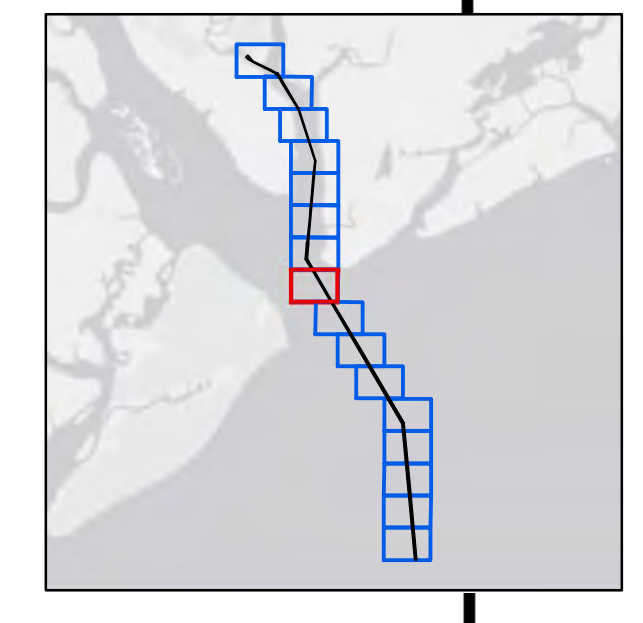
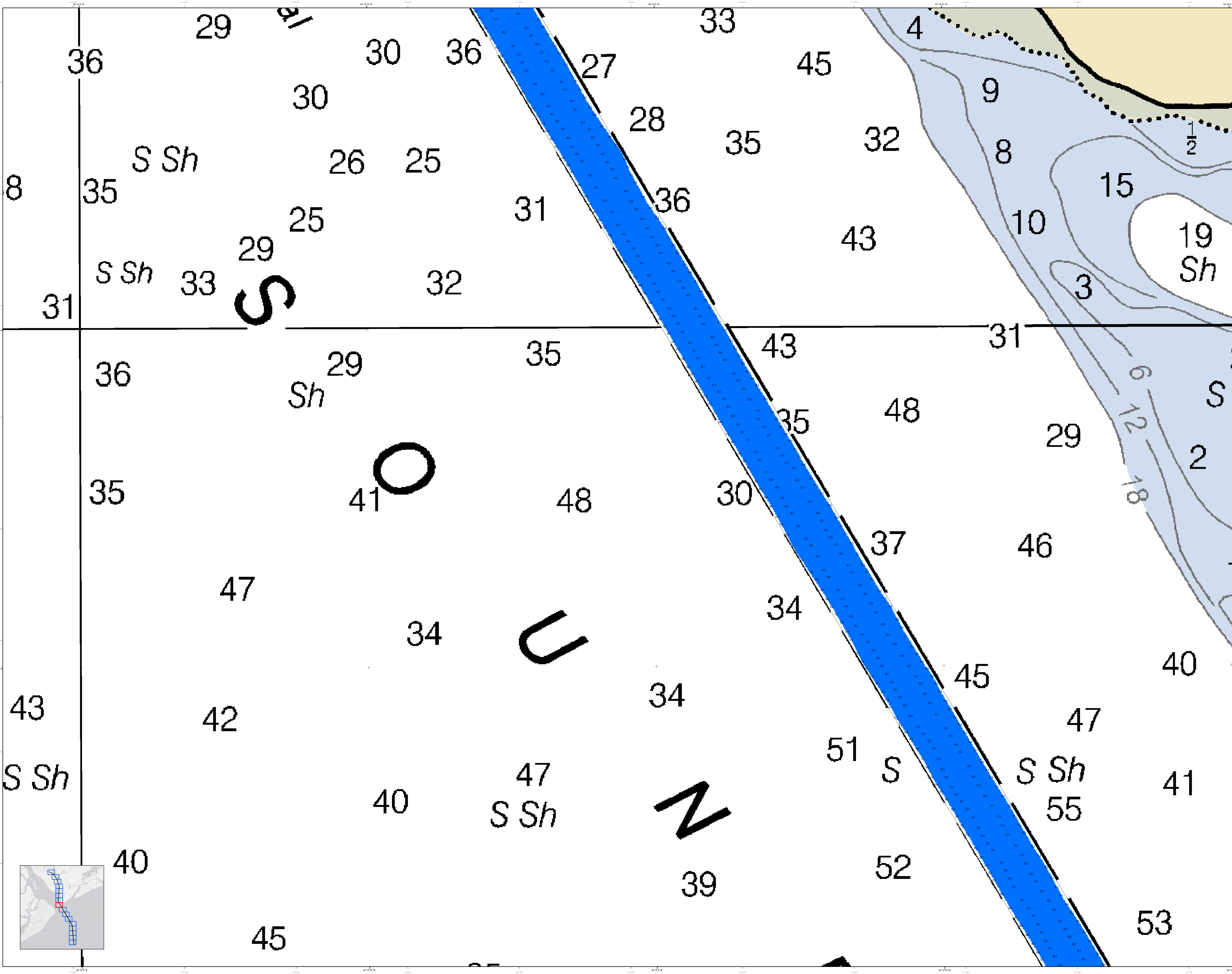


PRECEDENCE STATE:
 1. This map is a preliminary map.
 2. This map is not to be used for navigation.
 3. This map is not to be used for engineering purposes.
 4. This map is not to be used for legal purposes.
 5. This map is not to be used for any other purpose.
 6. This map is not to be used for any other purpose.
 7. This map is not to be used for any other purpose.
 8. This map is not to be used for any other purpose.



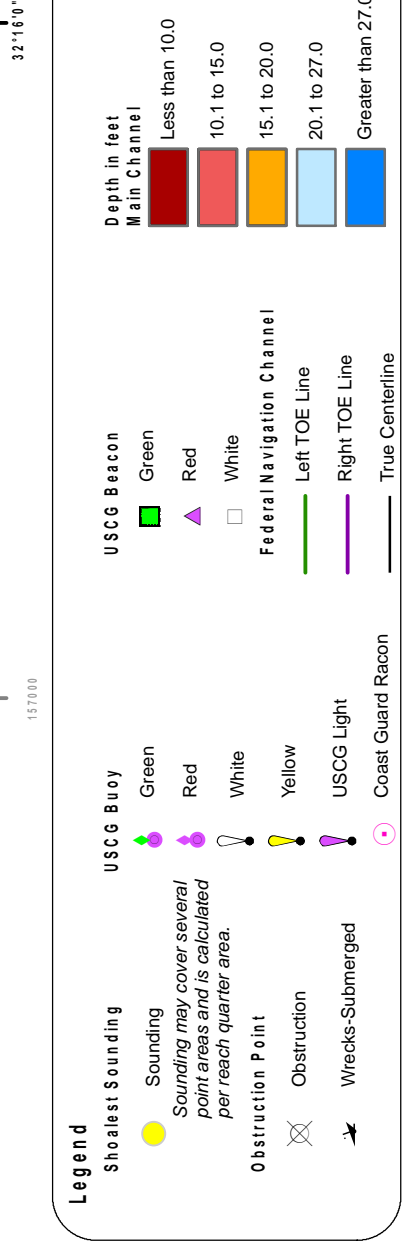
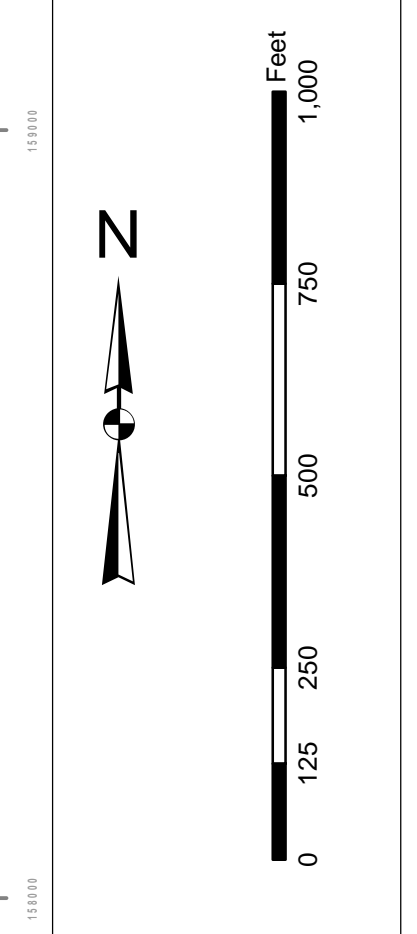
Designed By:	Survey Date:	Production Date:
Hydro Software v3.02	16 AUG 2018	22 AUG 2018
Reviewed By:	Project Reference Number:	
	13000	
Revised By:	Scale:	
	1 inch = 250 feet	
Projection:	Projection:	
NAD 1983 StatePlane South Carolina FIPS 3200 Feet		

Part 16 of the Charleston Survey
 The information depicted on this map represents the results of surveys made on the dates indicated and can only be considered as indicating the general location of the survey lines.
 Concluded on: 16 AUGUST 2018
 Perri Royal, South Carolina



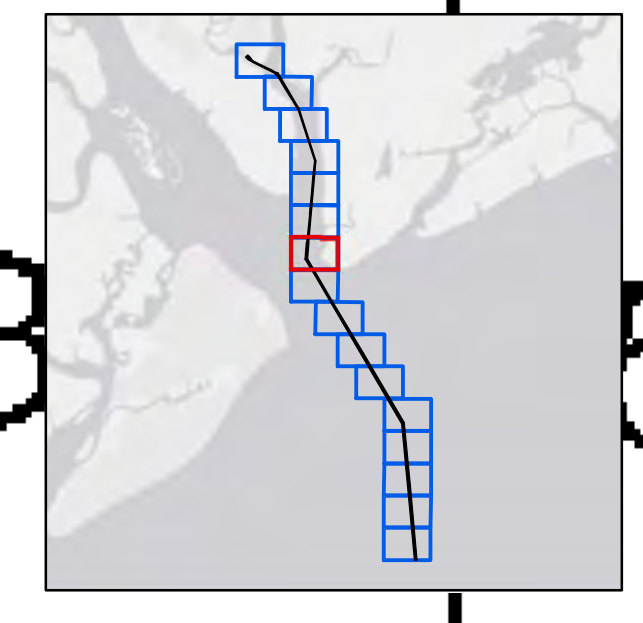
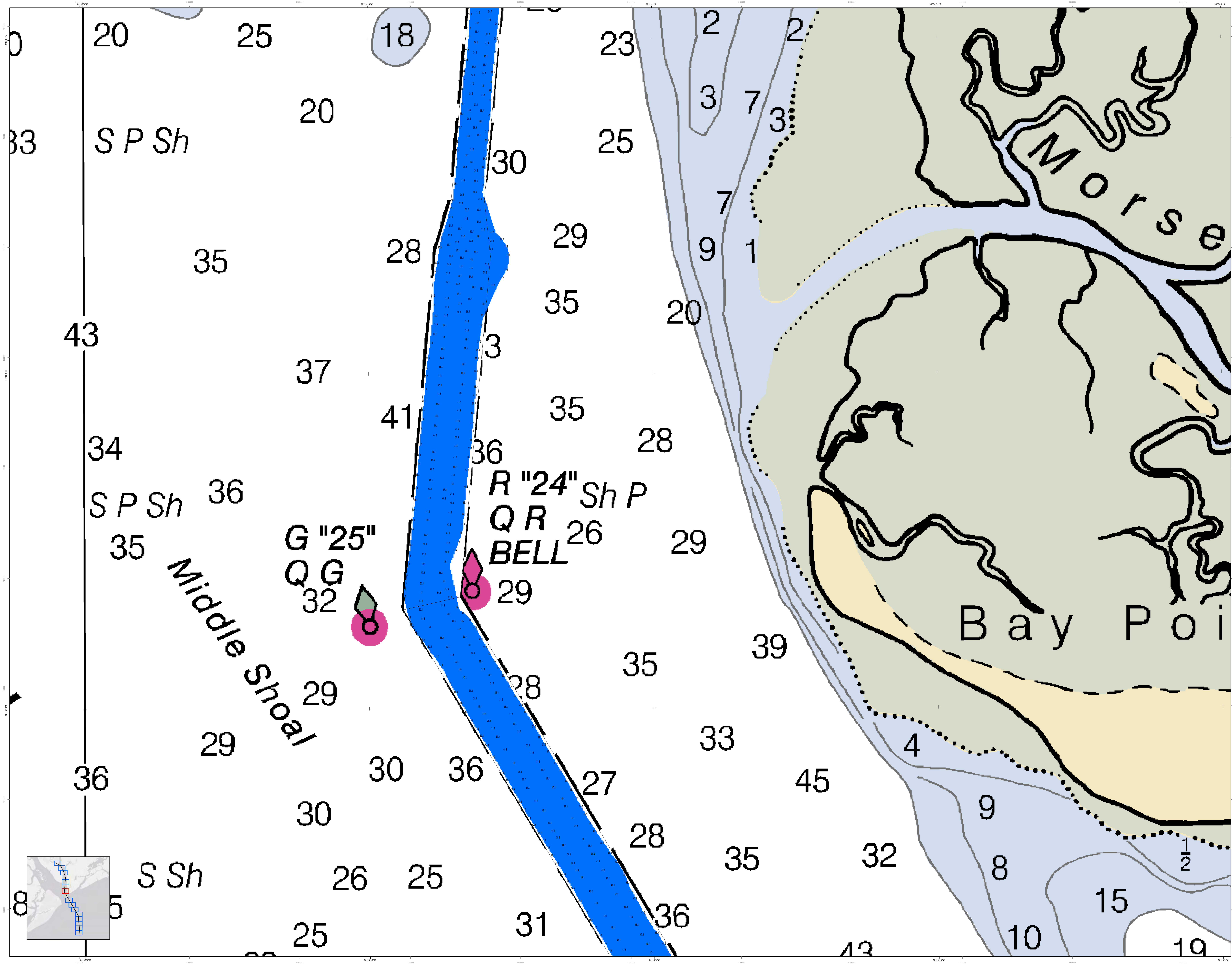
PRECISE STATE:
 1. This is a preliminary map and should not be used for navigation.
 2. This map is based on the best available data and is subject to change without notice.
 3. No warranty is made by the Corps of Engineers for the accuracy or completeness of the information shown on this map.
 4. The Corps of Engineers is not responsible for any errors or omissions on this map.

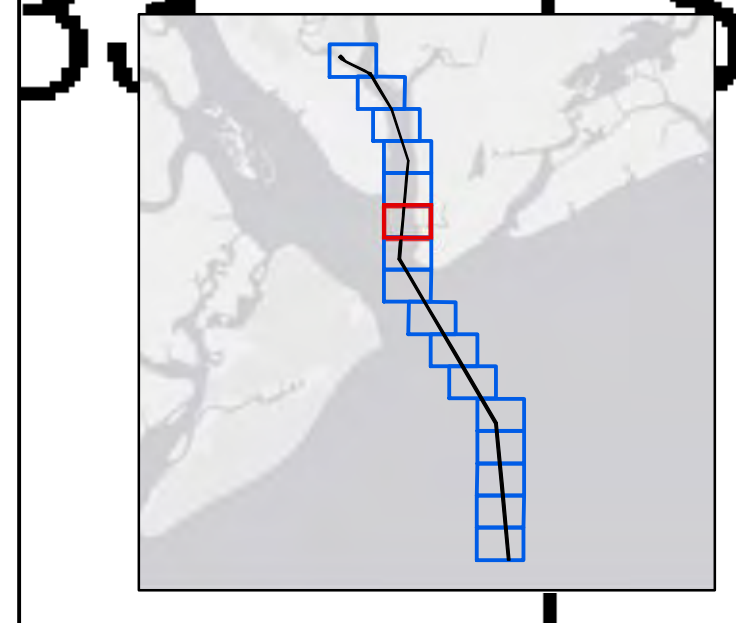
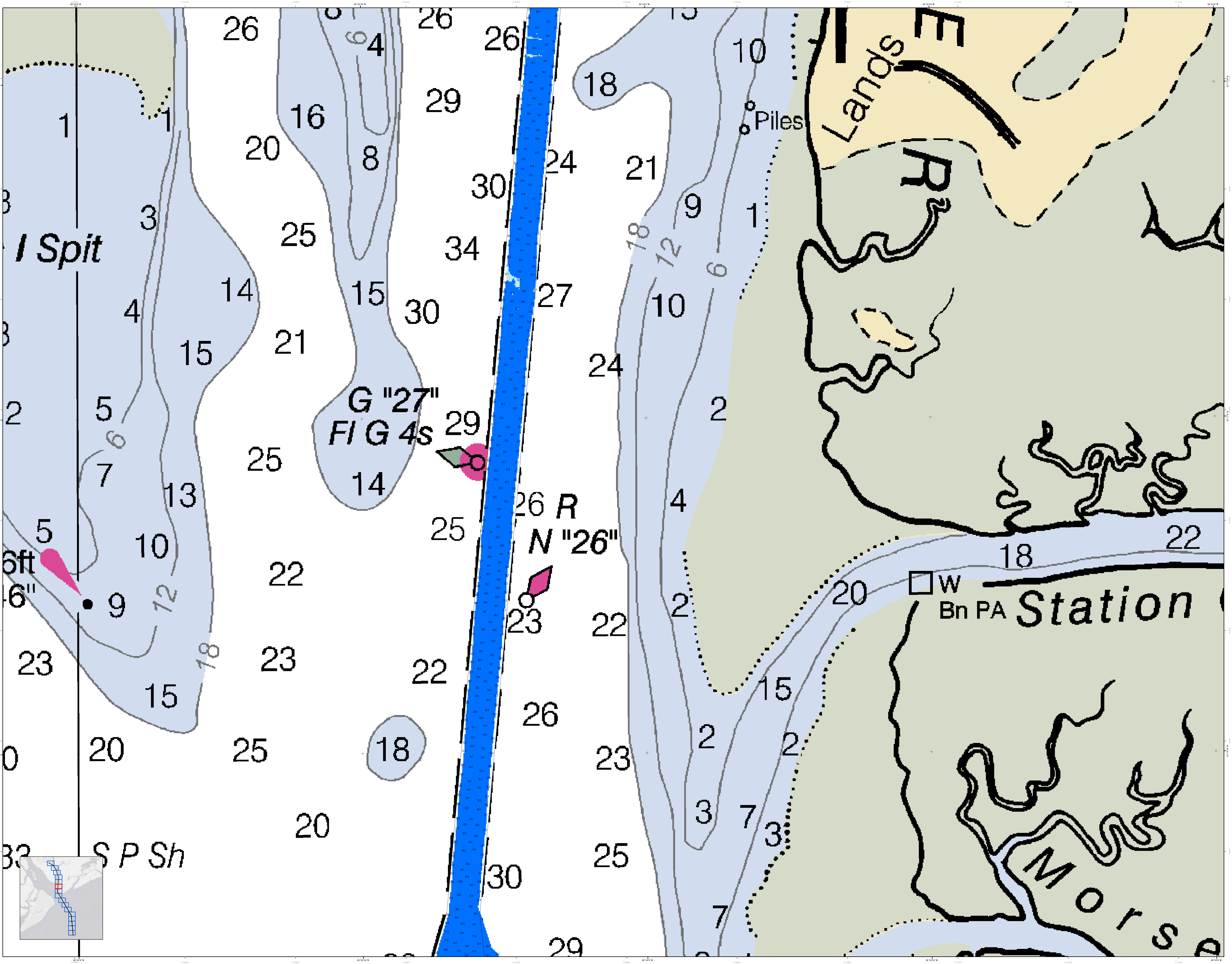
PROCESSED STATE:
 1. This map is based on the best available data and is subject to change without notice.
 2. No warranty is made by the Corps of Engineers for the accuracy or completeness of the information shown on this map.



Designed By:	Hydro Software v3.82	Survey Date:	16 AUG 2018	Production Date:	22 AUG 2018
Reviewed By:	1:5000	Project Reference Number:	PC0010	Scale:	1 inch = 250 feet
Revised State:		Revision State:	CONDITION	Projection:	NAD 1983 StatePlane South Carolina FIPS 3900 Feet

Part of the Charleston Survey
 The information depicted on this map represents the results of surveys made on the dates indicated and can only be considered as indicating the general location of the objects shown.
 Concluded on: 16 AUGUST 2018
 Port Royal, South Carolina





U.S. Army Corps of Engineers
Charleston District

PRECISION STATE:
 1. This is a preliminary chart.
 2. It is not to be used for navigation.
 3. It is not to be used for any other purpose.
 4. It is not to be used for any other purpose.
 5. It is not to be used for any other purpose.

Legend:

- 1: 1 to 5
- 2: 6 to 10
- 3: 11 to 15
- 4: 16 to 20
- 5: 21 to 25
- 6: 26 to 30
- 7: 31 to 35
- 8: 36 to 40
- 9: 41 to 45
- 10: 46 to 50
- 11: 51 to 55
- 12: 56 to 60
- 13: 61 to 65
- 14: 66 to 70
- 15: 71 to 75
- 16: 76 to 80
- 17: 81 to 85
- 18: 86 to 90
- 19: 91 to 95
- 20: 96 to 100

Scale:
 1 inch = 250 feet

Projection:
 NAD 1983 StatePlane South Carolina FIPS 3900 Feet

Metadata:

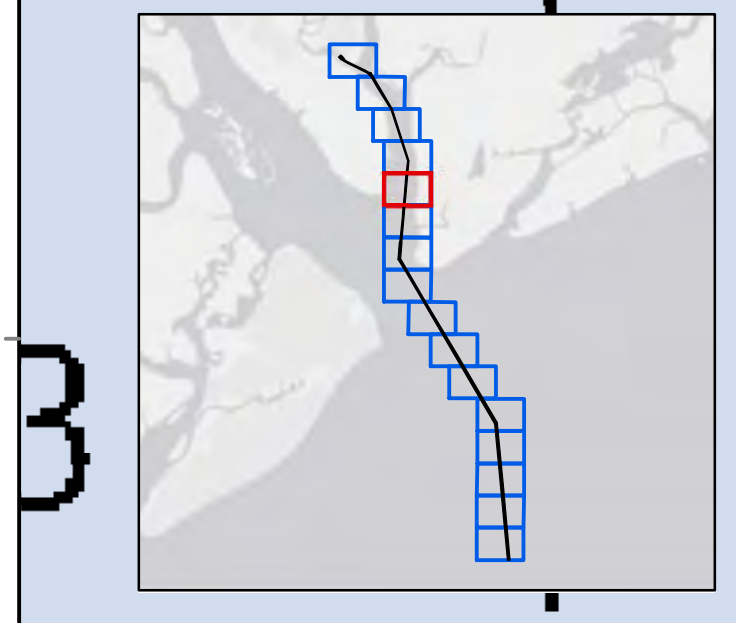
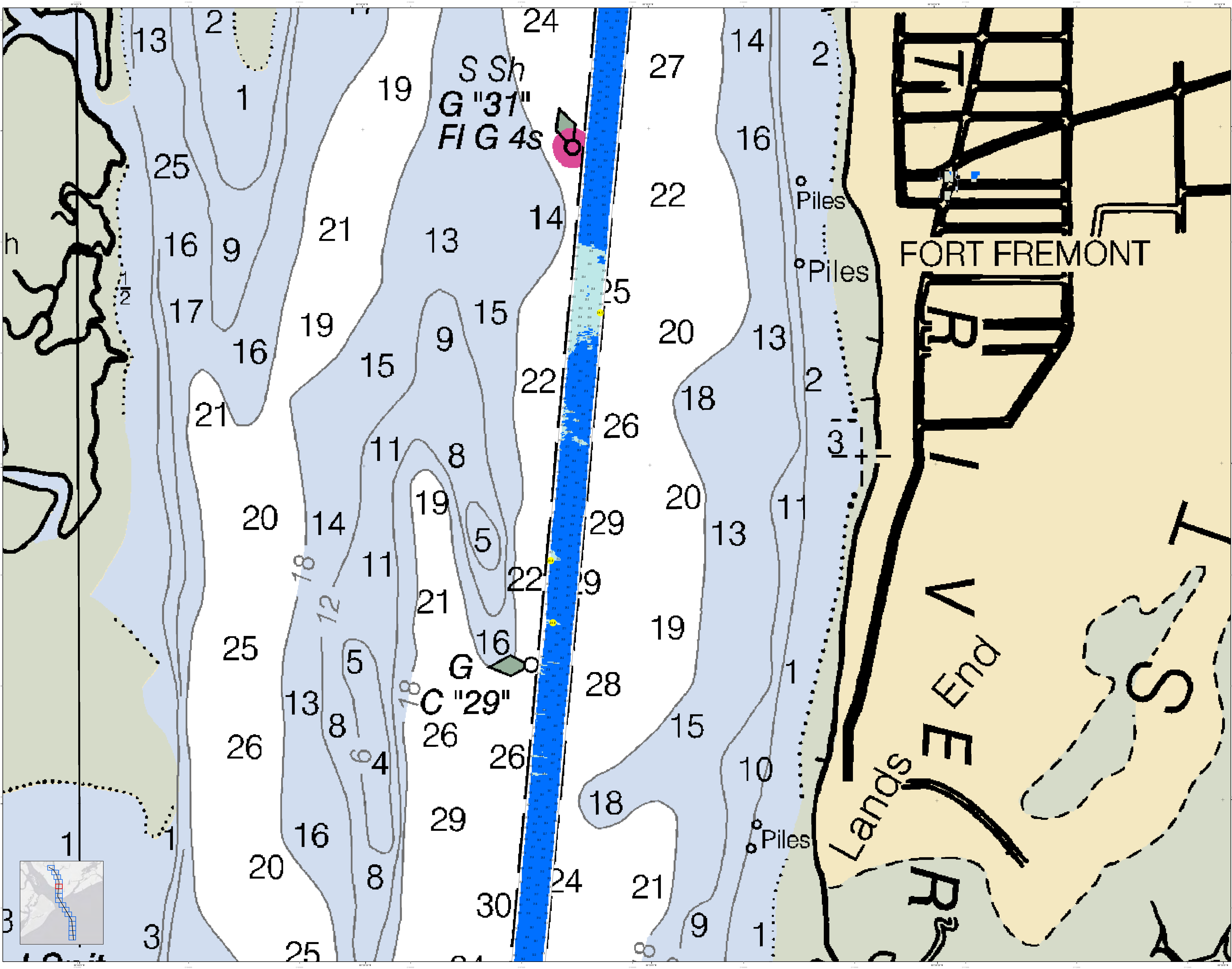
Designed By:	Jeffrey A. ...	Survey Date:	16 AUG 2018	Production Date:	22 AUG 2018
Reviewed By:	...	Project Reference Number:	...	Sheet Title:	...
Scale:	1 inch = 250 feet	Condition:	...		

Part 16 of the Hydrographic Survey:
 The information depicted on this map represents the results of surveys made on the dates indicated and can only be considered as indicating the general character of the bottom.

Concluded on: 16 AUGUST 2018
 Port Royal, South Carolina

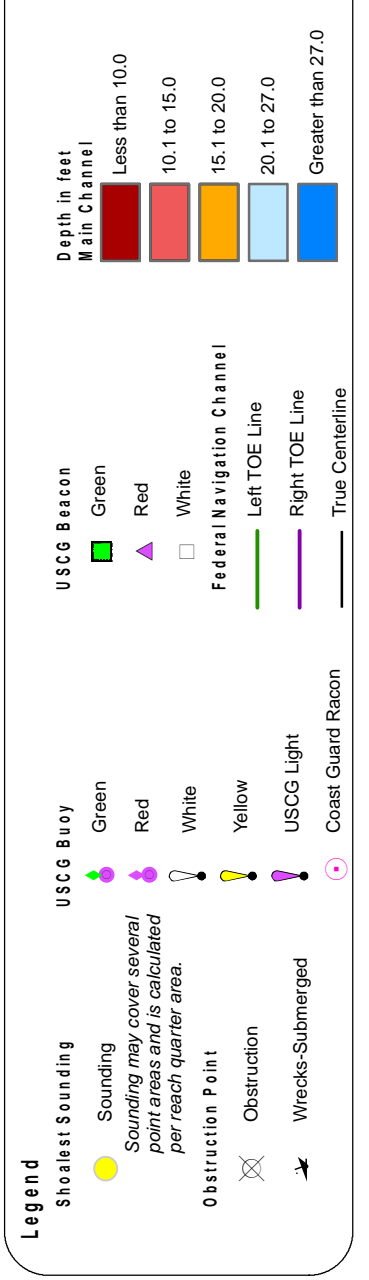
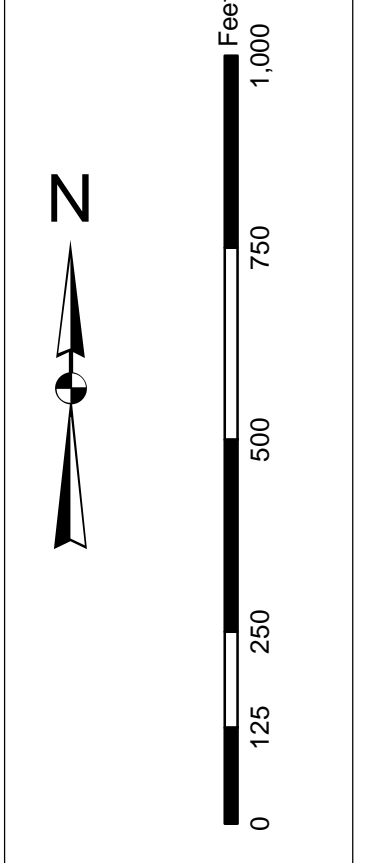
SHEET REFERENCE NUMBER:
 C012

SHEET 11 OF 16



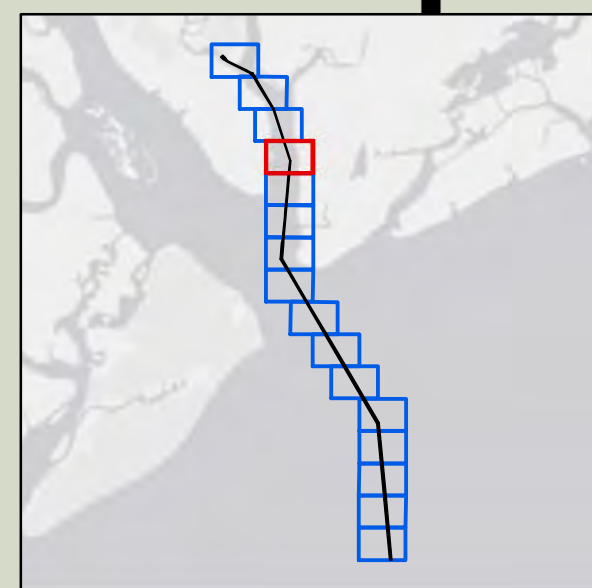
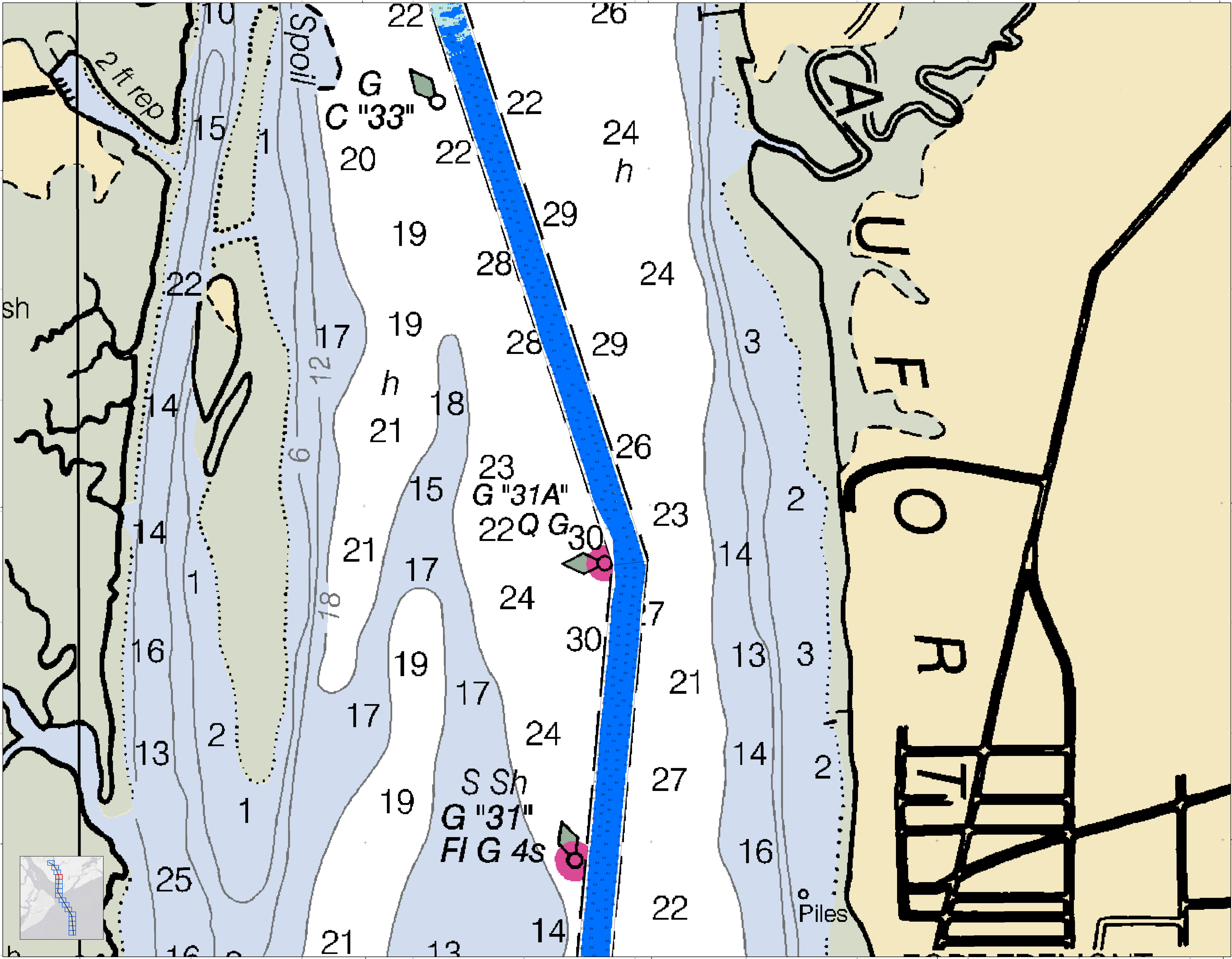
DISCLAIMER:
This chart is a hydrographic chart prepared by the U.S. Army Corps of Engineers, Charleston District Office. It is not a nautical chart and should not be used for navigation. It is intended for informational purposes only. The information on this chart is not intended to be used for navigation. The information on this chart is not intended to be used for navigation. The information on this chart is not intended to be used for navigation.

PRECISION STATE:
1. This chart is based on the best available information.
2. The information on this chart is not intended to be used for navigation.
3. The information on this chart is not intended to be used for navigation.
4. The information on this chart is not intended to be used for navigation.
5. The information on this chart is not intended to be used for navigation.



Designed By:	Hydro Software v3.82	Survey Date:	16 AUG 2018	Production Date:	22 AUG 2018
Reviewed By:	1:50,000	Project Reference Number:	180300	Project Reference Number:	180300
Revised By:	1 inch = 250 feet	Scale:	CONDITION	Scale:	CONDITION
Project:	MAD 1803 StatePlane South Carolina FIPS 3900 Feet	Projection:		Projection:	

Part 1 of 1 of 1 Channel Survey
The information on this chart is not intended to be used for navigation. The information on this chart is not intended to be used for navigation. The information on this chart is not intended to be used for navigation. The information on this chart is not intended to be used for navigation. The information on this chart is not intended to be used for navigation.



U.S. Army Corps of Engineers
Charleston District

Part B Hydrographic Chart Survey
The information depicted on this map represents the results of surveys made on the dates indicated and can only be considered as indicating the general character of the bottom. It is not intended to be used for navigation.

Concluded on: 16 AUGUST 2018
Perr Royal, South Carolina

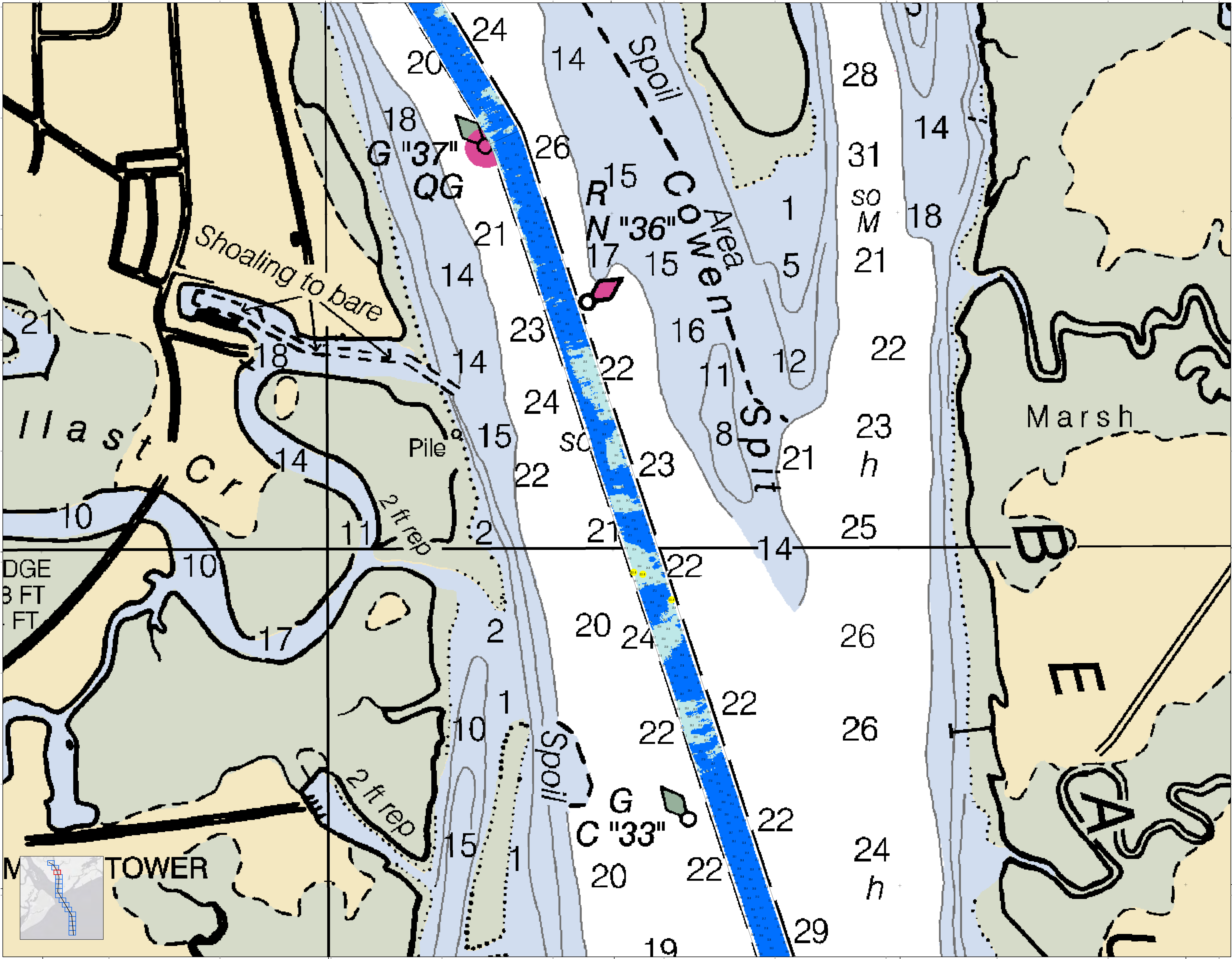
DESIGNED BY: U.S. Army Corps of Engineers, Charleston District, South Carolina
REVIEWED BY: U.S. Army Corps of Engineers, Charleston District, South Carolina

DESIGNED BY: Hydro Software v3.02
REVIEWED BY: Absolute Scale: 1:50,000
REVISIONS: Scale: 1 inch = 250 feet
PROJECTION: NAD 1983 StatePlane South Carolina FIPS 3200 Feet

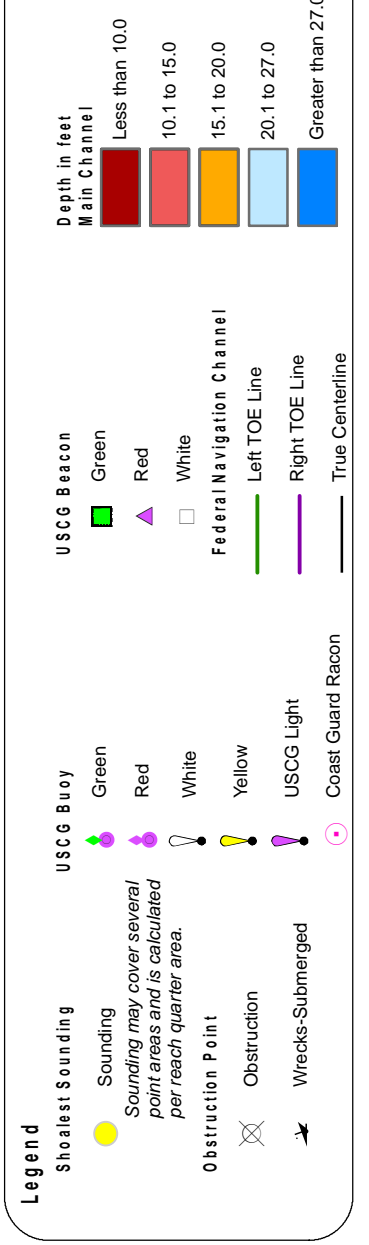
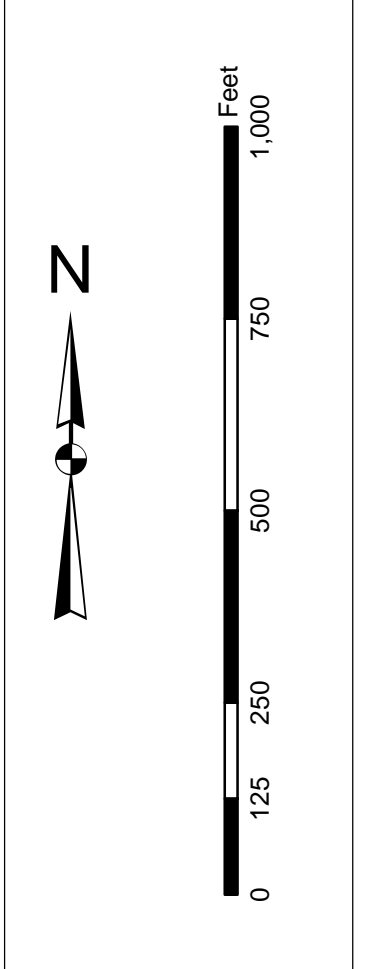
Production Date: 16 AUG 2018
Project Reference Number: 16C012
Survey State: SOUTH CAROLINA
CONDITION: CONDITION

Legend:
 - 100 Fathoms
 - 200 Fathoms
 - 300 Fathoms
 - 400 Fathoms
 - 500 Fathoms
 - 600 Fathoms
 - 700 Fathoms
 - 800 Fathoms
 - 900 Fathoms
 - 1000 Fathoms
 - 1100 Fathoms
 - 1200 Fathoms
 - 1300 Fathoms
 - 1400 Fathoms
 - 1500 Fathoms
 - 1600 Fathoms
 - 1700 Fathoms
 - 1800 Fathoms
 - 1900 Fathoms
 - 2000 Fathoms
 - 2100 Fathoms
 - 2200 Fathoms
 - 2300 Fathoms
 - 2400 Fathoms
 - 2500 Fathoms
 - 2600 Fathoms
 - 2700 Fathoms
 - 2800 Fathoms
 - 2900 Fathoms
 - 3000 Fathoms
 - 3100 Fathoms
 - 3200 Fathoms
 - 3300 Fathoms
 - 3400 Fathoms
 - 3500 Fathoms
 - 3600 Fathoms
 - 3700 Fathoms
 - 3800 Fathoms
 - 3900 Fathoms
 - 4000 Fathoms
 - 4100 Fathoms
 - 4200 Fathoms
 - 4300 Fathoms
 - 4400 Fathoms
 - 4500 Fathoms
 - 4600 Fathoms
 - 4700 Fathoms
 - 4800 Fathoms
 - 4900 Fathoms
 - 5000 Fathoms
 - 5100 Fathoms
 - 5200 Fathoms
 - 5300 Fathoms
 - 5400 Fathoms
 - 5500 Fathoms
 - 5600 Fathoms
 - 5700 Fathoms
 - 5800 Fathoms
 - 5900 Fathoms
 - 6000 Fathoms
 - 6100 Fathoms
 - 6200 Fathoms
 - 6300 Fathoms
 - 6400 Fathoms
 - 6500 Fathoms
 - 6600 Fathoms
 - 6700 Fathoms
 - 6800 Fathoms
 - 6900 Fathoms
 - 7000 Fathoms
 - 7100 Fathoms
 - 7200 Fathoms
 - 7300 Fathoms
 - 7400 Fathoms
 - 7500 Fathoms
 - 7600 Fathoms
 - 7700 Fathoms
 - 7800 Fathoms
 - 7900 Fathoms
 - 8000 Fathoms
 - 8100 Fathoms
 - 8200 Fathoms
 - 8300 Fathoms
 - 8400 Fathoms
 - 8500 Fathoms
 - 8600 Fathoms
 - 8700 Fathoms
 - 8800 Fathoms
 - 8900 Fathoms
 - 9000 Fathoms
 - 9100 Fathoms
 - 9200 Fathoms
 - 9300 Fathoms
 - 9400 Fathoms
 - 9500 Fathoms
 - 9600 Fathoms
 - 9700 Fathoms
 - 9800 Fathoms
 - 9900 Fathoms
 - 10000 Fathoms

Scale: 1 inch = 250 feet
Projection: NAD 1983 StatePlane South Carolina FIPS 3200 Feet

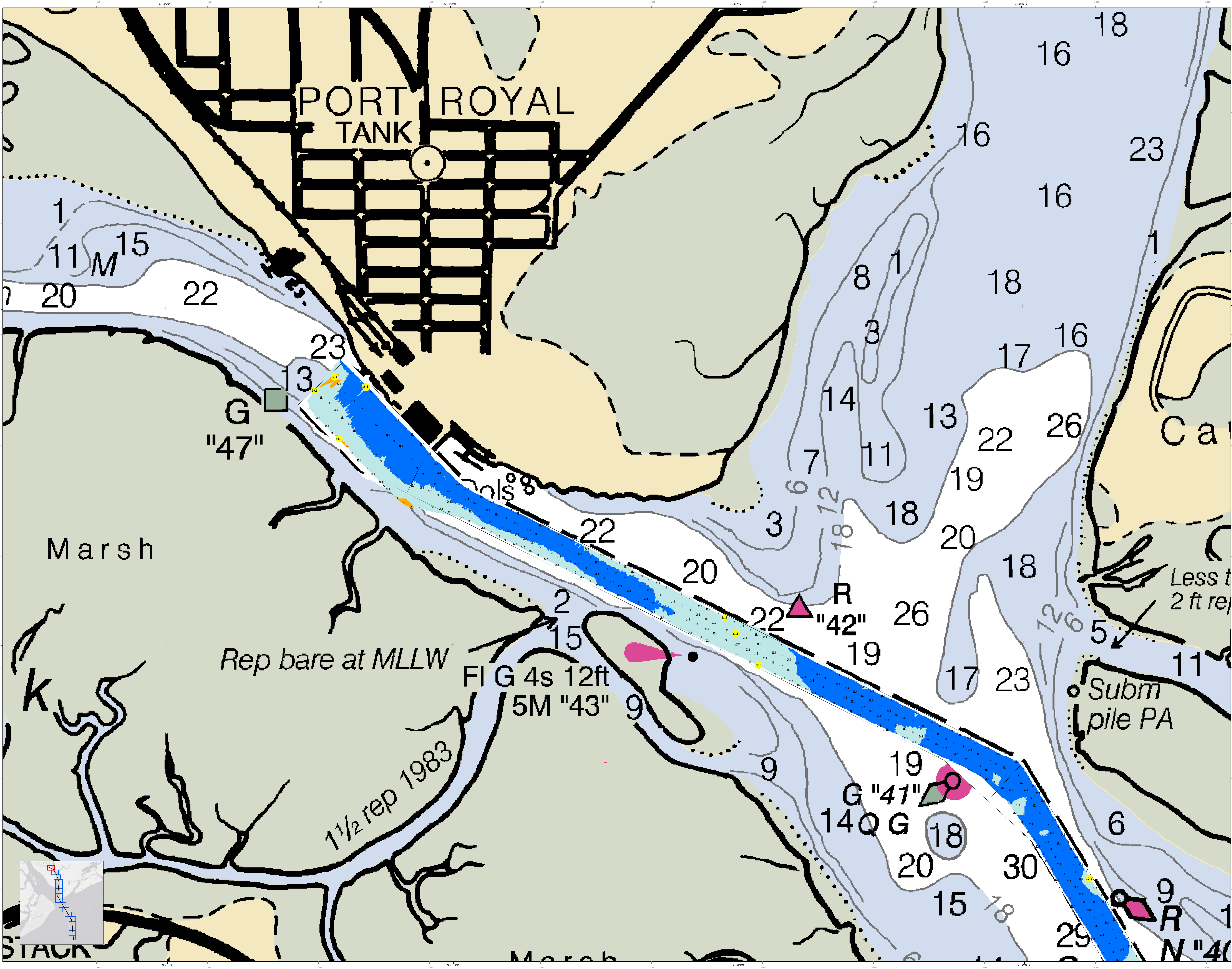


DISCLAIMER:
This chart is a representation of the data provided to the District Office. Soundings are based on the datum indicated. The chart is not a guarantee of accuracy. The District Office is not responsible for any errors or omissions. The user assumes all responsibility for the use of this chart.



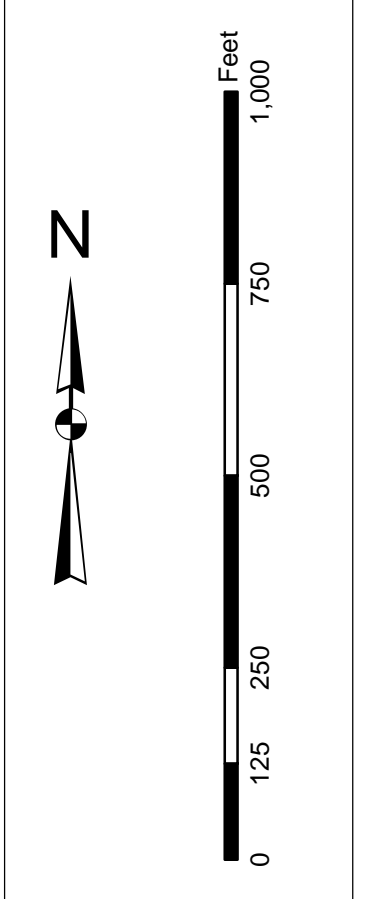
Designed By:	Hydro Software v3.82	Survey Date:	16 AUG 2018	Production Date:	22 AUG 2018
Reviewed By:	1:5000	Project Reference Number:	PC0010	Scale:	1 inch = 250 feet
Revised:	1 inch = 250 feet	Scale:	PC0010	Condition:	CONDITION
U.S. Army Corps of Engineers Charleston District Savannah Branch 800 Broad St. Charleston, SC 29405	Projection: NAD 1983 StatePlane South Carolina FIPS 3200 Feet				

Part 17 Hydrographic Survey
The information on this map is based on the results of surveys made on the dates indicated and can only be considered as indicating the general character of the bottom. It is not to be used for navigation.
Concluded on: 16 AUGUST 2018
Perr Royal, South Carolina



Disclaimer:
This chart is a representation of the data available at the time of publication. It is not a guarantee of accuracy. The user assumes all responsibility for the use of this chart. The Corps of Engineers is not liable for any damages or losses resulting from the use of this chart.

Legend:
1. Depth contours
2. Obstructions
3. Navigational markers
4. Soundings
5. Shoreline
6. Bathymetry
7. Hydrographic data
8. Other data



Symbol	Description
[Red circle]	Light
[Green circle]	Daymark
[Black circle]	Obstruction
[Blue circle]	Submerged pile
[Yellow circle]	Other

Designed By: J. B. [Name]	Production Date: 16 AUG 2018
Reviewed By: [Name]	Project Reference Number: [Number]
Scale: 1" = 250'	Scale: 1" = 250'
Projection: NAD 1983 StatePlane South Carolina FIPS 3900 Feet	Condition: [Text]

Part 17 Hydrographic Survey
The information depicted on this map represents the results of surveys made on the dates indicated and can only be considered as indicating the general character of the bottom. It is not a guarantee of accuracy. The user assumes all responsibility for the use of this chart.
Concluded on: 16 AUGUST 2018
Port Royal, South Carolina