

PUBLIC NOTICE

**CHARLESTON DISTRICT, CORPS OF ENGINEERS
69A Hagood Avenue
Charleston, South Carolina 29403-5107**

REGULATORY DIVISION

Refer to: P/N SAC-2015-00475

December 12, 2016

Pursuant to Section 10 of the Rivers and Harbors Act of 1899 (33 U.S.C. 403) and Sections 401 and 404 of the Clean Water Act (33 U.S.C. 1341), the proposed Corley Mill Mitigation Bank Prospectus has been submitted to the Department of the Army (Corps) and the South Carolina Interagency Review Team (IRT) by

**Ecological Associates, Inc.
ATTENTION: Mr. D. Nick Roark
Post Office Box 357
Johns Island, South Carolina 29457**

for a proposal to establish and operate a stream and wetland mitigation bank that is adjacent to

Twelve Mile Creek and Fourteen Mile Creek

at a location along the west side of Corley Mill Road approximately 1.5-miles north of the intersection of Highway 378 and Corley Mill Road, in Lexington County, South Carolina (Latitude: 34.0278°, Longitude: -81.1647°), Irmo Quadrangle sheet.

In order to give all interested parties an opportunity to express their views

NOTICE

is hereby given that written statements regarding the proposed work will be received by the **Corps** until

30 Days from the Date of this Notice,

from those interested in the activity and whose interests may be affected by the proposed work.

The proposed project consists of establishing a freshwater stream mitigation bank in the Saluda River watershed (8-digit Hydrologic Unit Code 03050109) in the Piedmont Ecoregion. The proposed 115.30-acre mitigation site includes approximately 6,117 linear feet (LF) of perennial streams comprising portions of Twelve Mile Creek (4,655 LF) and Fourteen Mile Creek (1,462 LF), approximately 2,333 LF of seasonal tributaries, 80.15 acres of wetlands, and 35.15 acres of uplands. According to the Prospectus, the mitigation work plan includes restoration, enhancement, and preservation of wetlands and streams. The mitigation work plan for the wetlands includes: restoration by removing existing roads and dike sections; enhancement by reestablishing the historical stream flow and associated hydrological processes, and planting with endemic wetland trees and shrubs; and, preservation. The mitigation work plan for the perennial and seasonal streams includes restoration by dam/barrier removal, bank repair and stabilization, point bar development, and constructing in-stream structures; and, preservation of

perennial streams. Once the mitigation work is completed, the bank sponsor proposes to monitor the mitigation site to ensure that the restoration areas are developing as expected and meeting the necessary performance standards.

According to the Prospectus, the proposed mitigation bank would provide in-kind compensatory mitigation for authorized impacts to aquatic resources located within the Saluda River, Stevens Creek, and Lower Broad in the Piedmont ecoregion as shown on the attached Service Area Map. The work required to complete the proposed activities on the mitigation site may be authorized under Nationwide Permit # 27, after reviews by the Corps, the South Carolina Department of Health and Environmental Control, and the South Carolina IRT. The bank sponsor would protect the mitigation bank under a conservation easement.

NOTE: This public notice and associated plans are available on the Corps' website at:
<http://www.sac.usace.army.mil/Missions/Regulatory/PublicNotices>.

The District Engineer has concluded that the discharges associated with this project, both direct and indirect, should be reviewed by the South Carolina Department of Health and Environmental Control in accordance with provisions of Section 401 of the Clean Water Act. As such, this notice constitutes a request, on behalf of the applicant, for certification that this project will comply with applicable effluent limitations and water quality standards. The bank sponsor is hereby advised that supplemental information may be required by the State to facilitate the review.

This notice initiates the Essential Fish Habitat (EFH) consultation requirements of the Magnuson-Stevens Fishery Conservation and Management Act. Implementation of the proposed project would impact 115.30 acres of estuarine substrates and emergent wetlands utilized by various life stages of species comprising the shrimp, and snapper-grouper management complexes. The District Engineer's initial determination is that the proposed action would not have a substantial individual or cumulative adverse impact on EFH or fisheries managed by the South Atlantic Fishery Management Council and the National Marine Fisheries Service (NMFS). The District Engineer's final determination relative to project impacts and the need for mitigation measures is subject to review by and coordination with the NMFS.

Pursuant to the Section 7 of the Endangered Species Act of 1973 (as amended), the Corps has reviewed the project area, examined all information provided by the applicant, and the District Engineer has determined, based on the most recently available information that the project will have no effect on any Federally endangered, threatened, or proposed species and will not result in the destruction or adverse modification of designated or proposed critical habitat. This public notice serves as a request to the U.S. Fish and Wildlife Service and the National Marine Fisheries Service for any additional information they may have on whether any listed or proposed endangered or threatened species or designated or proposed critical habitat may be present in the area which would be affected by the activity.

In accordance with Section 106 of the NHPA, the District Engineer has consulted South Carolina ArchSite (GIS), for the presence or absence of historic properties (as defined in 36 C.F.R. 800.16)(1)(1)), and has initially determined that historic properties, are present; moreover, these historic properties may be affected by the undertaking. This public notice serves to notify the State Historic Preservation Office that the Corps plans to initiate Section 106 consultation on these historic properties. Individuals or groups who would like to be consulting parties for the purposes of the NHPA should make such a request to the Corps in writing within 30 days of this public notice. To ensure that other historic properties that the District Engineer is not aware of are not overlooked, this public notice also serves as a request to the State Historic Preservation Office and

other interested parties to provide any information they may have with regard to historic properties.

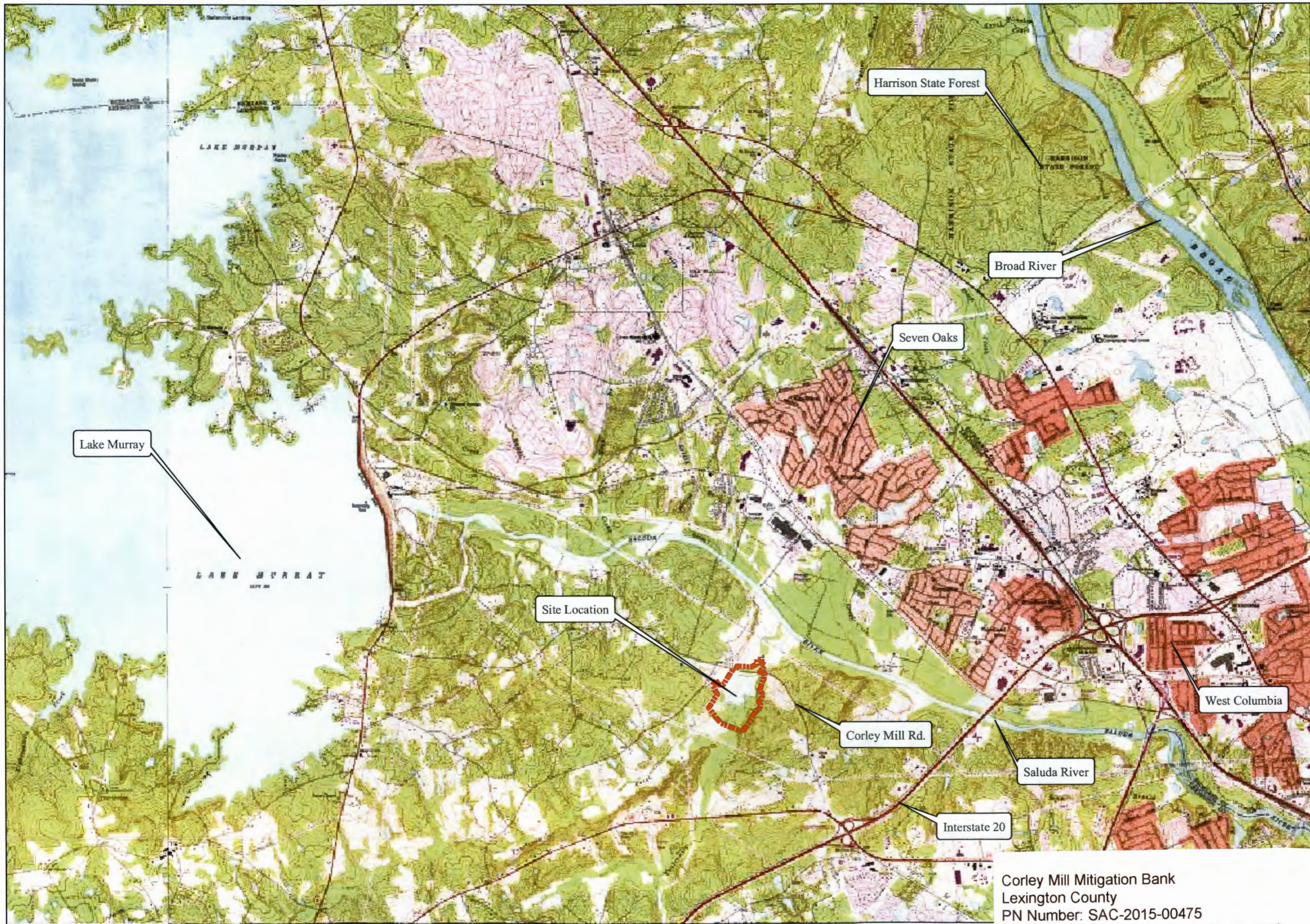
Any person may request, in writing, within the comment period specified in this notice, that a public hearing be held to consider this application. Requests for a public hearing shall state, with particularity, the reasons for holding a public hearing.

The decision whether to approve or deny the proposed mitigation bank will be based on an evaluation of the probable impact including cumulative impacts of the activity on the public interest. The benefit which reasonably may be expected to accrue from the project must be balanced against its reasonably foreseeable detriments. All factors which may be relevant to the project will be considered including the cumulative effects thereof; among those are conservation, economics, aesthetics, general environmental concerns, wetlands, historic properties, fish and wildlife values, flood hazards, flood plain values, land use, navigation, shoreline erosion and accretion, recreation, water supply and conservation, water quality, energy needs, safety, food and fiber production and, in general, the needs and welfare of the people.

The Corps is soliciting comments from the public; Federal, state, local agencies, and officials; Indian Tribes; and other interested parties in order to consider and evaluate the impacts of this activity. Any comments received will be considered by the Corps to determine whether to approve or deny the proposed mitigation bank. To make this decision, comments are used to assess impacts on endangered species, historic properties, water quality, general environmental effects, and the other public interest factors listed above. Comments are used in the preparation of an Environmental Assessment and/or an Environmental Impact Statement pursuant to the National Environmental Policy Act. Comments are also used to determine the need for a public hearing and to determine the overall public interest of the activity. **Please submit comments in writing, identifying the project of interest by public notice number, to the following address:**

**U.S. Army Corps of Engineers
ATTN: REGULATORY DIVISION
69A Hagood Avenue
Charleston, South Carolina 29403-5107**

If there are any questions concerning this public notice, please contact Dana Gentry, at (843) 329-8044 or toll free at 1-866-329-8187.



Ecological Associates, Inc.
 P.O. Box 357
 Johns Island, S.C. 29457-0357
 (843) 412-6616

FIGURE 1
Corley Mill Mitigation Bank - Vicinity Map

LEGEND:


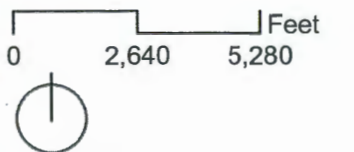
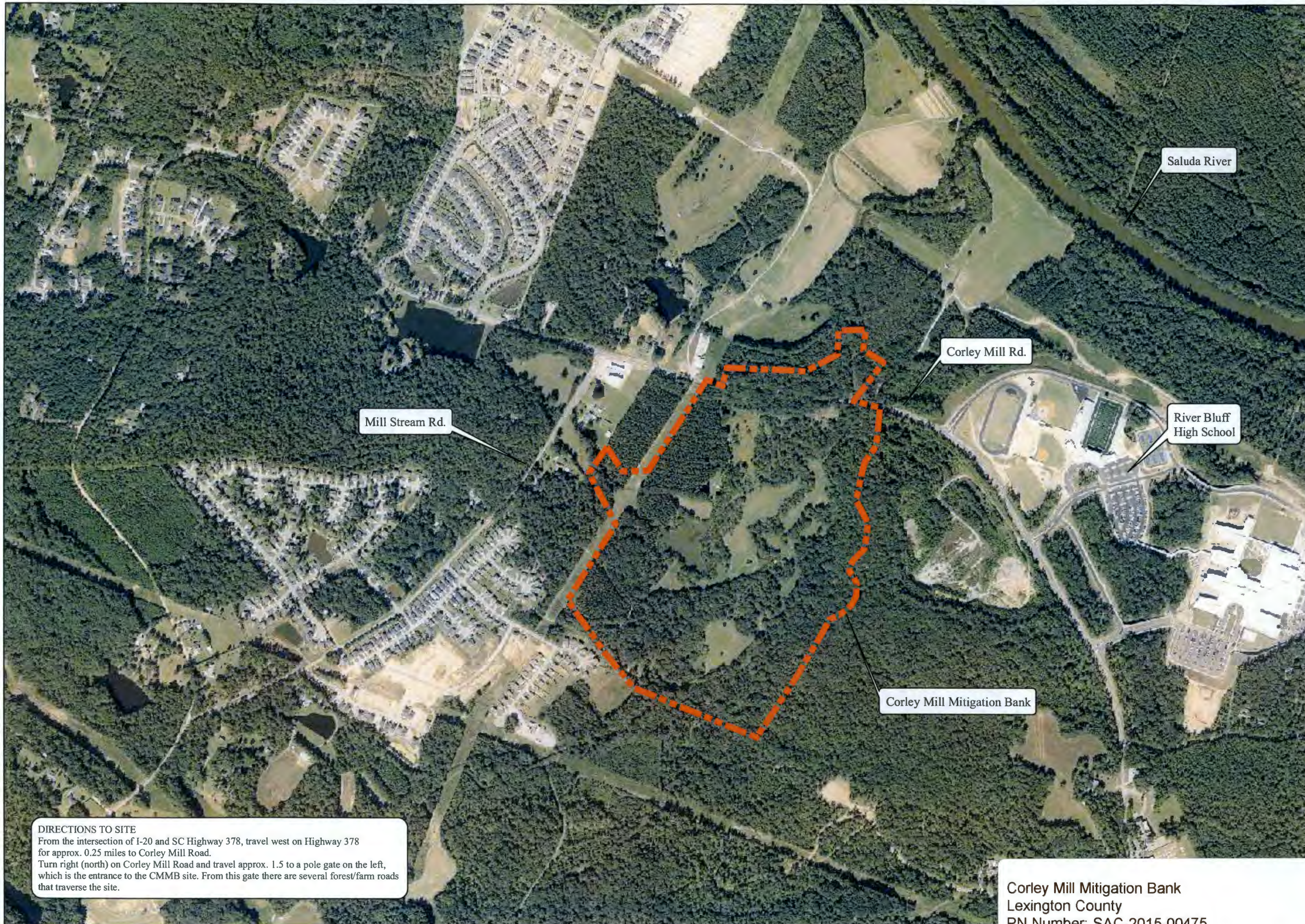
 Approx. Boundary
 115.30 Acres

Image Source:
 1973 Quad Data

SCALE:



DATE: 7.7.16



DIRECTIONS TO SITE
 From the intersection of I-20 and SC Highway 378, travel west on Highway 378 for approx. 0.25 miles to Corley Mill Road.
 Turn right (north) on Corley Mill Road and travel approx. 1.5 to a pole gate on the left, which is the entrance to the CMMB site. From this gate there are several forest/farm roads that traverse the site.

Ecological Associates, Inc.
 P.O. Box 357
 Johns Island, S.C. 29457-0357
 (843) 412-6616

FIGURE 2
Corley Mill Mitigation Bank - Location Map

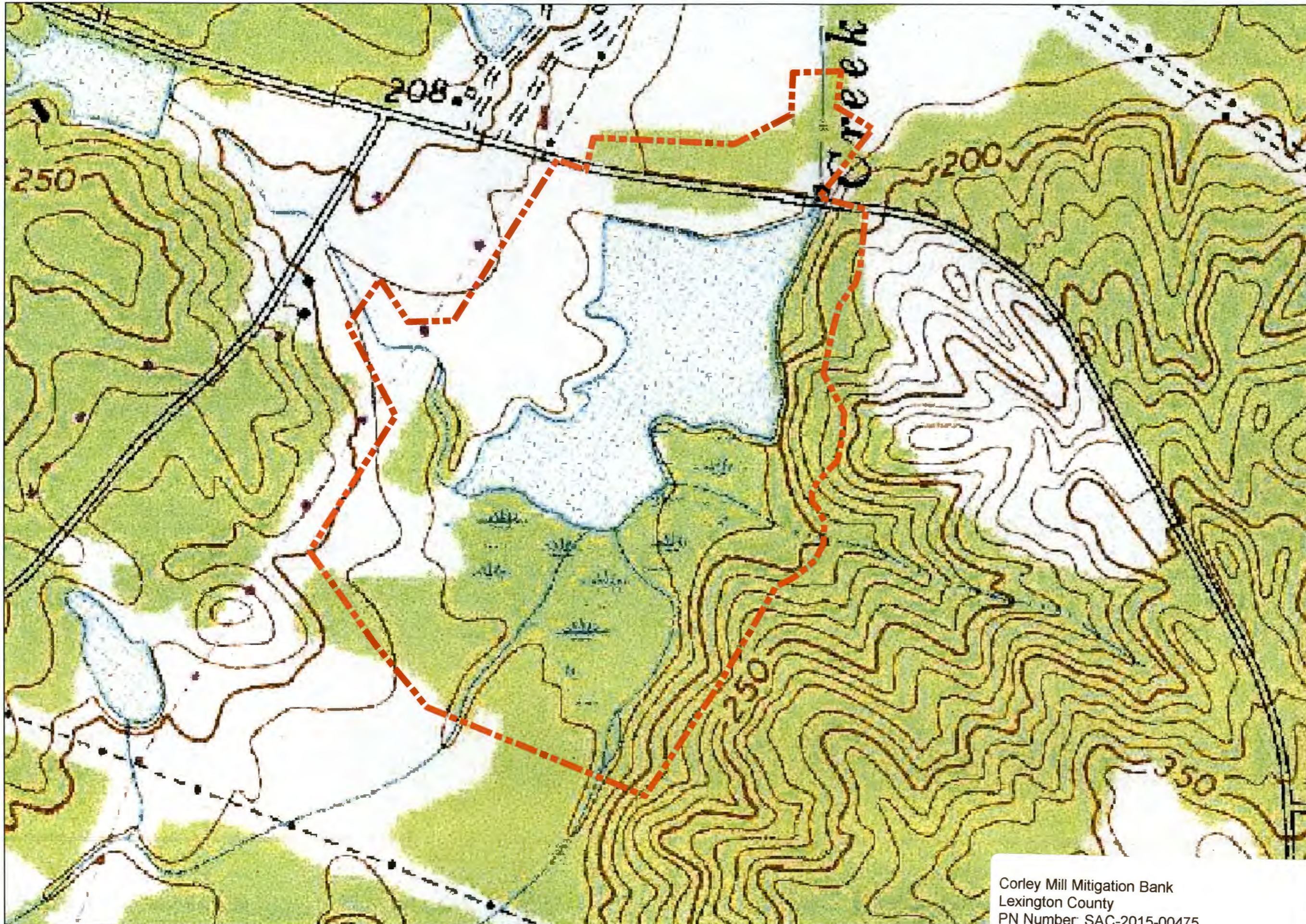
LEGEND:
 [Dashed orange line] Approx. Boundary
 115.30 Acres

Image Source:
 2013 NAIP Aerial

SCALE:
 0 200 400 Feet
 [North arrow symbol]

Corley Mill Mitigation Bank
 Lexington County
 PN Number: SAC-2015-00475
 Sheet 2 of 6 PN Date: 12-12-2016

DATE: 7.7.16



Ecological Associates, Inc.
 P.O. Box 357
 Johns Island, S.C. 29457-0357
 (843) 412-6616

FIGURE 3
Corley Mill Mitigation Bank - Irmo Quad Map

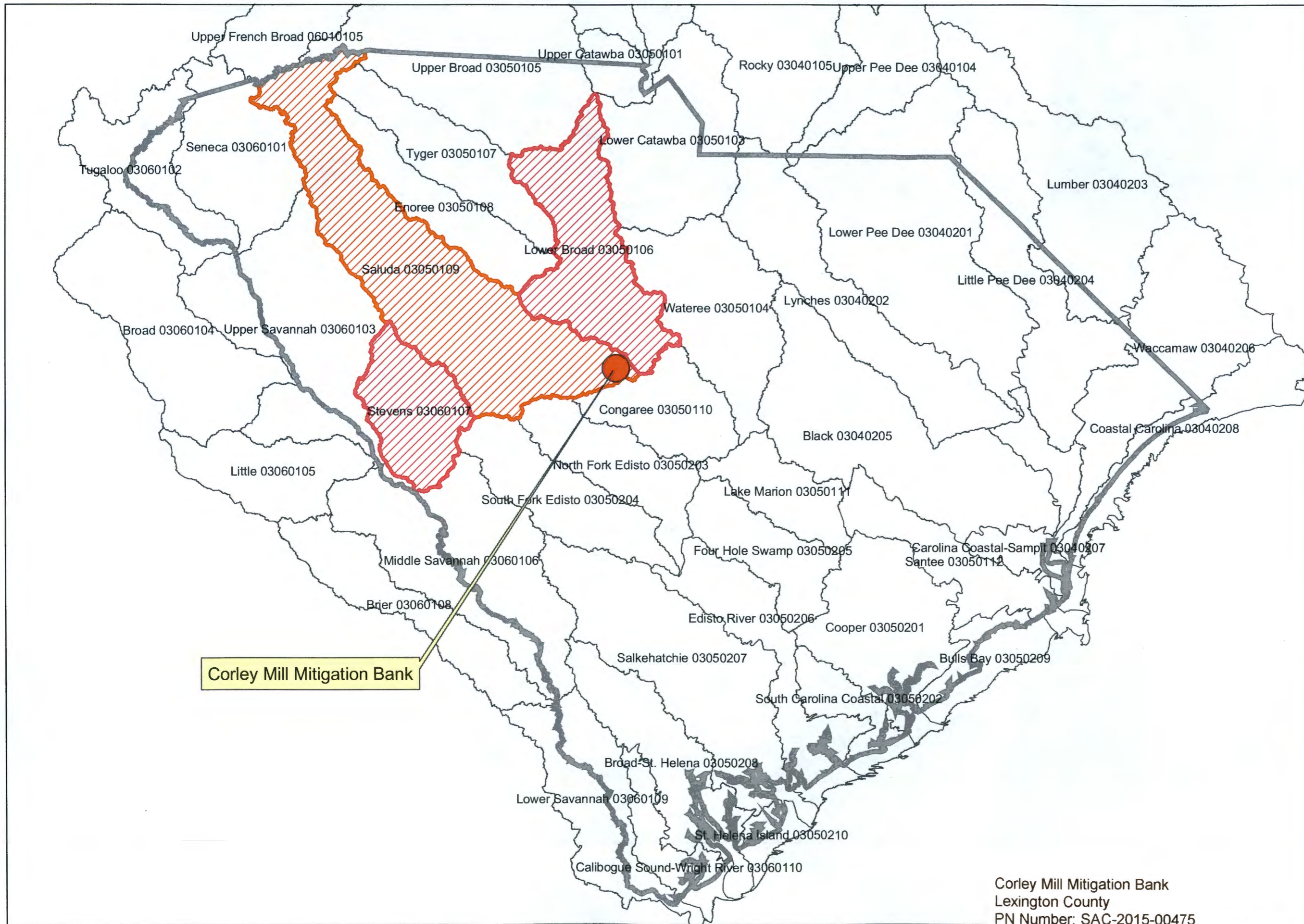
LEGEND:
 [Red dashed line symbol] Approx. Boundary
 115.30 Acres

Image Source:
 1973 Quad Data

SCALE:
 0 200 400 Feet



Corley Mill Mitigation Bank
 Lexington County
 PN Number: SAC-2015-00475
 Sheet 3 of 6
 PN Date: 12-12-2016

DATE: 7.7.16



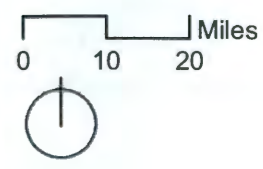
Ecological Associates, Inc.
P.O. Box 357
Johns Island, S.C. 29457-0357
(843) 412-6616

FIGURE 4
Corley Mill Mitigation Bank Watersheds Map

LEGEND:
 Primary Service Area
 Secondary Service Area

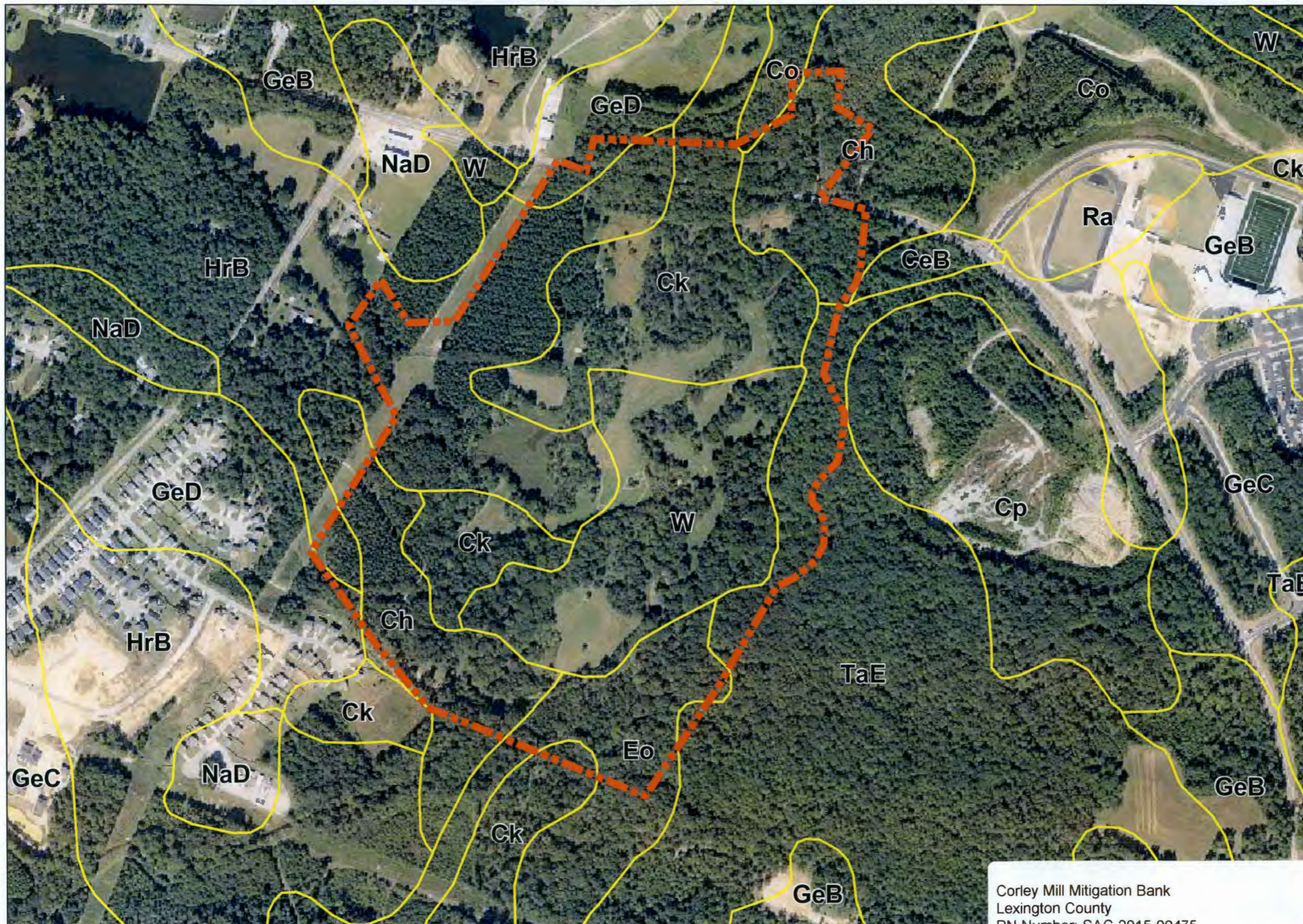
Data Source:
DCNR Watershed Basins

SCALE:



Corley Mill Mitigation Bank
Lexington County
PN Number: SAC-2015-00475
Sheet 4 of 6
PN Date: 12-12-2016


DATE: 7.7.16



Ecological Associates, Inc.
 P.O. Box 357
 Johns Island, S.C. 29457-0357
 (843) 412-6616

FIGURE 9
Corley Mill Mitigation Bank - NRCS Soils Map

LEGEND:


 Approx. Boundary
 115.30 Acres

On Site Soil Types:

- Ck - Chenneby
- Ch - Chenneby (Silty Clay)
- Co - Congaree
- Eo - Enoree
- W - Water
- TaE - Tatum
- HrB - Herndon
- GeD - Georgeville

Image Source:
 2013 NAIP Aerial

SCALE:

 Feet
 0 200 400

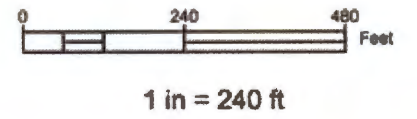


DATE: 7.7.16


Corley Mill Mitigation Bank
 Lexington County
 PN Number: SAC-2015-00475
 Sheet 5 of 6 PN Date: 12-12-2016

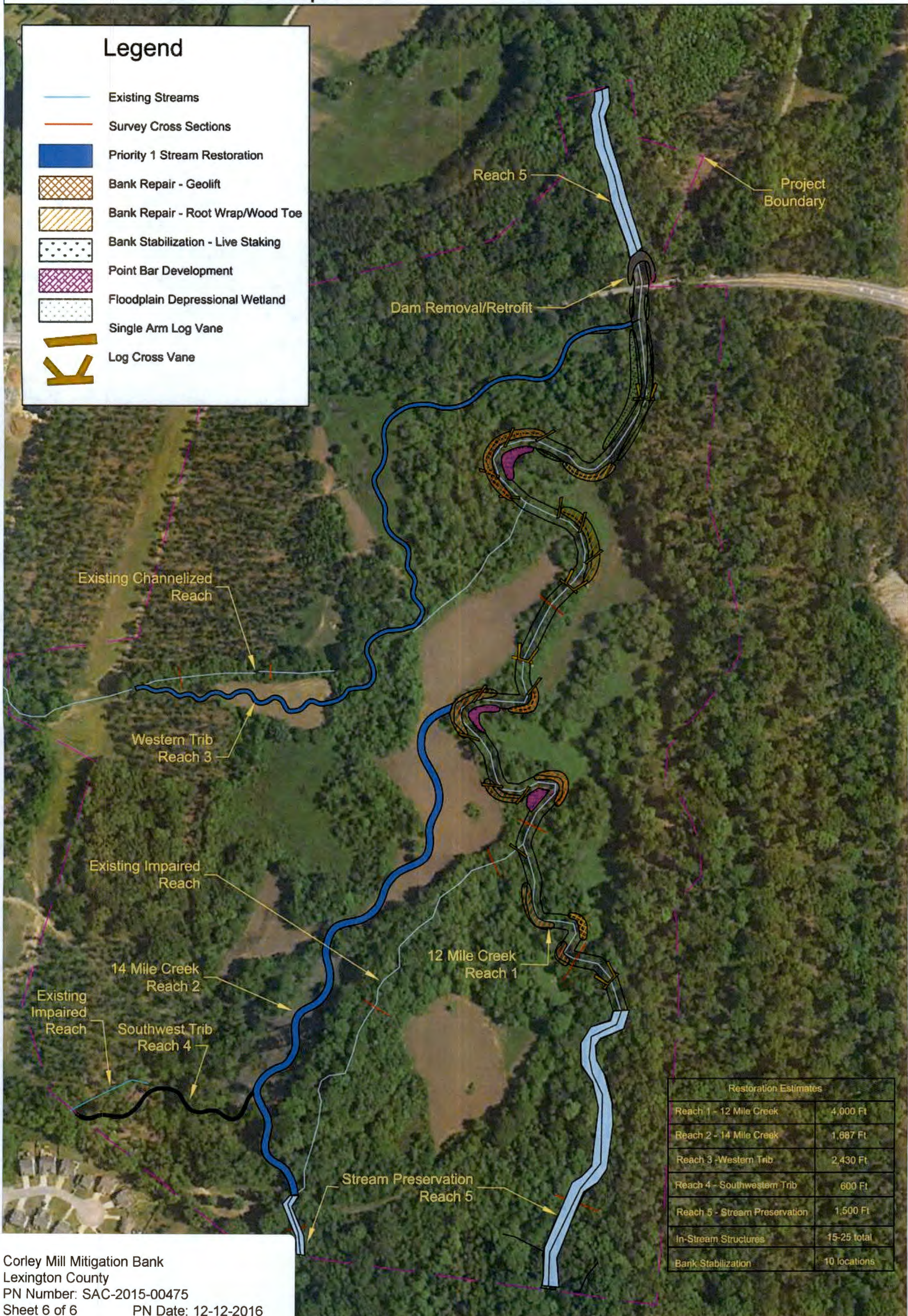
Figure 15

Corley Mill Mitigation Bank
Stream Restoration Concept Plan



Legend

-  Existing Streams
-  Survey Cross Sections
-  Priority 1 Stream Restoration
-  Bank Repair - Geolift
-  Bank Repair - Root Wrap/Wood Toe
-  Bank Stabilization - Live Staking
-  Point Bar Development
-  Floodplain Depressional Wetland
-  Single Arm Log Vane
-  Log Cross Vane



Restoration Estimates	
Reach 1 - 12 Mile Creek	4,000 Ft
Reach 2 - 14 Mile Creek	1,687 Ft
Reach 3 - Western Trib	2,430 Ft
Reach 4 - Southwestern Trib	600 Ft
Reach 5 - Stream Preservation	1,500 Ft
In-Stream Structures	15-25 total
Bank Stabilization	10 locations