

JOINT
PUBLIC NOTICE

CHARLESTON DISTRICT, CORPS OF ENGINEERS
1835 Assembly Street, Room 865 B-1
Columbia, South Carolina 29201

and

THE S.C. DEPARTMENT OF HEALTH AND ENVIRONMENTAL CONTROL
Office of Environmental Quality Control
Water Quality Certification and Wetlands Programs Section
2600 Bull Street
Columbia, South Carolina 29201

REGULATORY DIVISION

Refer to: P/N SAC-2013-00691 (REVISED)

JUNE 8, 2016

Pursuant to Sections 401 and 404 of the Clean Water Act (33 U.S.C. 1341), a permittee-responsible compensatory mitigation (PRM) plan for an application originally noticed on October 11, 2013, has been submitted to the Department of the Army and the S.C. Department of Health and Environmental Control by

Greenville-Spartanburg Airport District
c/o Katie Crum
Kimley-Horn & Associates
4500 Main Street, Suite 500
Virginia Beach, Virginia 23462

as mitigation to restore, enhance and preserve tributaries and wetlands in

the Middle Tyger River, the North Tyger River, adjacent wetlands and unnamed tributaries

at a site located west of Interstate 26 and south of Old Georgia Road, Spartanburg County, South Carolina (Latitude: 34.8711 °N, Longitude: 81.9922 °W), Moore and Reidville quads.

In order to give all interested parties an opportunity to express their views

NOTICE

is hereby given that written statements regarding the proposed work will be received by the **Corps** until

15 Days from the Date of this Notice,

and **SCDHEC** will receive written statements regarding the proposed work until

30 Days from the Date of this Notice

from those interested in the activity and whose interests may be affected by the proposed work.

PLEASE NOTE: THIS PROJECT WAS ORIGINALLY PLACED ON PUBLIC NOTICE ON

OCTOBER 11, 2013. IN THAT NOTICE, THE APPLICANT HAD PROPOSED TO PURCHASE MITIGATION CREDITS FROM A MITIGATION BANK. DUE TO THE CREDITS NOT BEING AVAILABLE, THE APPLICANT IS NOW PROPOSING A PERMITTEE RESPONSIBLE MITIGATION (PRM) PLAN. THE PURPOSE OF THIS PUBLIC NOTICE IS TO RECEIVE COMMENTS ON THE CURRENTLY PROPOSED PRM PLAN. COMMENTS RECEIVED ON THE PROJECT DURING THE ORIGINAL PUBLIC NOTICE WILL BE CONSIDERED IN OUR EVALULATION. A 401 CERTIFICATION BY SCDHEC WAS ISSUED FOR THE GSP LOGISTICS PARK PROJECT, BUT THE 401 CERTIFICATION REQUIRES A MODIFICATION DUE TO THE PROPOSED CHANGE IN COMPENSATORY MITIGATION.

The proposed work consists of off-site PRM. In detail, the applicant proposes to restore 2,715 linear feet of stream, enhance 330 linear feet of stream, preserve 4,810 linear feet of stream, restore 0.7 acres of wetlands, enhance 21.4 acres of wetlands, and preserve 10 acres of wetlands with a conservation easement, as shown on the attached plans. Stream and wetland restoration would be accomplished by installing a culvert at an existing road crossing, raising the thalweg elevation of a previously dredged and straightened reach, implementing an invasive exotic species control plan, and using natural channel design techniques to construct and restore stream channels. The applicant has revised its proposed compensatory mitigation plan since the original public notice for the GSP Logistics Park project. The applicant previously proposed the purchase of compensatory mitigation credits from an approved mitigation bank; however, sufficient credits are not currently available for purchase from an approved mitigation bank or in-lieu fee program in this service area. Construction of the GSP Logistics Park would require 11,874 stream credits and 5.83 wetland credits to mitigate for the proposed project impacts. According to the applicant, the PRM would generate 12,888 stream credits and 61.13 wetland credits. The applicant proposes to incorporate excess credits beyond those needed for the GSP Logistics Park project into a future compensatory mitigation bank to be established on the full parcel. The proposed PRM site is a portion of a 500-acre parcel that contains a broad floodplain to the North Tyger River. The District Engineer has not reached a decision as to the proposed PRM plan's compliance with the 2008 Final Compensatory Mitigation Rule and the Charleston District's Guidelines for Preparing a Compensatory Mitigation Plan. A jurisdictional determination has not been verified for the proposed PRM site.

NOTE: This public notice and associated plans are available on the Corps' website at: <http://www.sac.usace.army.mil/Missions/Regulatory/PublicNotices> . For those unable to access the website, a copy of this notice and the associated plans will be provided, upon receipt of a written request. The request must identify the project of interest by public notice number and a self-addressed stamped envelope must also be provided. Your request should be addressed to the

**U.S. Army Corps of Engineers
ATTN: REGULATORY DIVISION
1835 Assembly Street, Room 865 B-1
Columbia, South Carolina 29201**

The District Engineer has concluded that the discharges associated with this project, both direct and indirect, should be reviewed by the South Carolina Department of Health and Environmental Control in accordance with provisions of Section 401 of the Clean Water Act. As such, this notice constitutes a request, on behalf of the applicant, for certification that this project will comply with applicable effluent limitations and water quality standards. This activity may also require evaluation for compliance with the S. C. Construction in Navigable Waters Permit Program. State review, permitting and certification is conducted by the S. C. Department of

Health and Environmental Control. The District Engineer will not process this application to a conclusion until such certifications are received. The applicant is hereby advised that supplemental information may be required by the State to facilitate the review.

This notice initiates the Essential Fish Habitat (EFH) consultation requirements of the Magnuson-Stevens Fishery Conservation and Management Act. Implementation of the proposed project would impact through restoration and enhancement activities 22.1 acres of freshwater wetland habitat well inland of estuarine substrates and emergent wetlands utilized by various life stages of species comprising the shrimp, and snapper-grouper management complexes. The District Engineer's initial determination is that the proposed action would not have a substantial individual or cumulative adverse impact on EFH or fisheries managed by the South Atlantic Fishery Management Council and the National Marine Fisheries Service (NMFS). The District Engineer's final determination relative to project impacts and the need for mitigation measures is subject to review by and coordination with the NMFS.

Pursuant to the Section 7 of the Endangered Species Act of 1973 (as amended), the Corps has examined all information provided by the applicant, and the District Engineer has determined, based on the most recently available information that the project may affect the Northern long-eared bat (*Myotis septentrionalis*) and the Dwarf-flowered heartleaf (*Hexastylis naniflora*) and/or designated critical habitat. A biological assessment (or other similar document) detailing our analysis of the potential effects of the action will be provided to the U.S. Fish and Wildlife Service and/or the National Marine Fisheries Service.

Pursuant to Section 106 of the National Historic Preservation Act (NHPA), this public notice also constitutes a request to Indian Tribes to notify the District Engineer of any historic properties of religious and cultural significance to them that may be affected by the proposed undertaking.

In accordance with Section 106 of the NHPA, the District Engineer has consulted South Carolina ArchSite (GIS), for the presence or absence of historic properties (as defined in 36 C.F.R. 800.16)(1)), and has initially determined that no historic properties are present; therefore, there will be no effect on historic properties. To ensure that other historic properties that the District Engineer is not aware of are not overlooked, this public notice also serves as a request to the State Historic Preservation Office and any other interested parties to provide any information they may have with regard to historic properties. This public notice serves as a request for concurrence within 30 days from the SHPO (and/or Tribal Historic Preservation Officer).

The District Engineer's final eligibility and effect determination will be based upon coordination with the SHPO and/or THPO, as appropriate and required and with full consideration given to the proposed undertaking's potential direct and indirect effects on historic properties within the Corps-identified permit area.

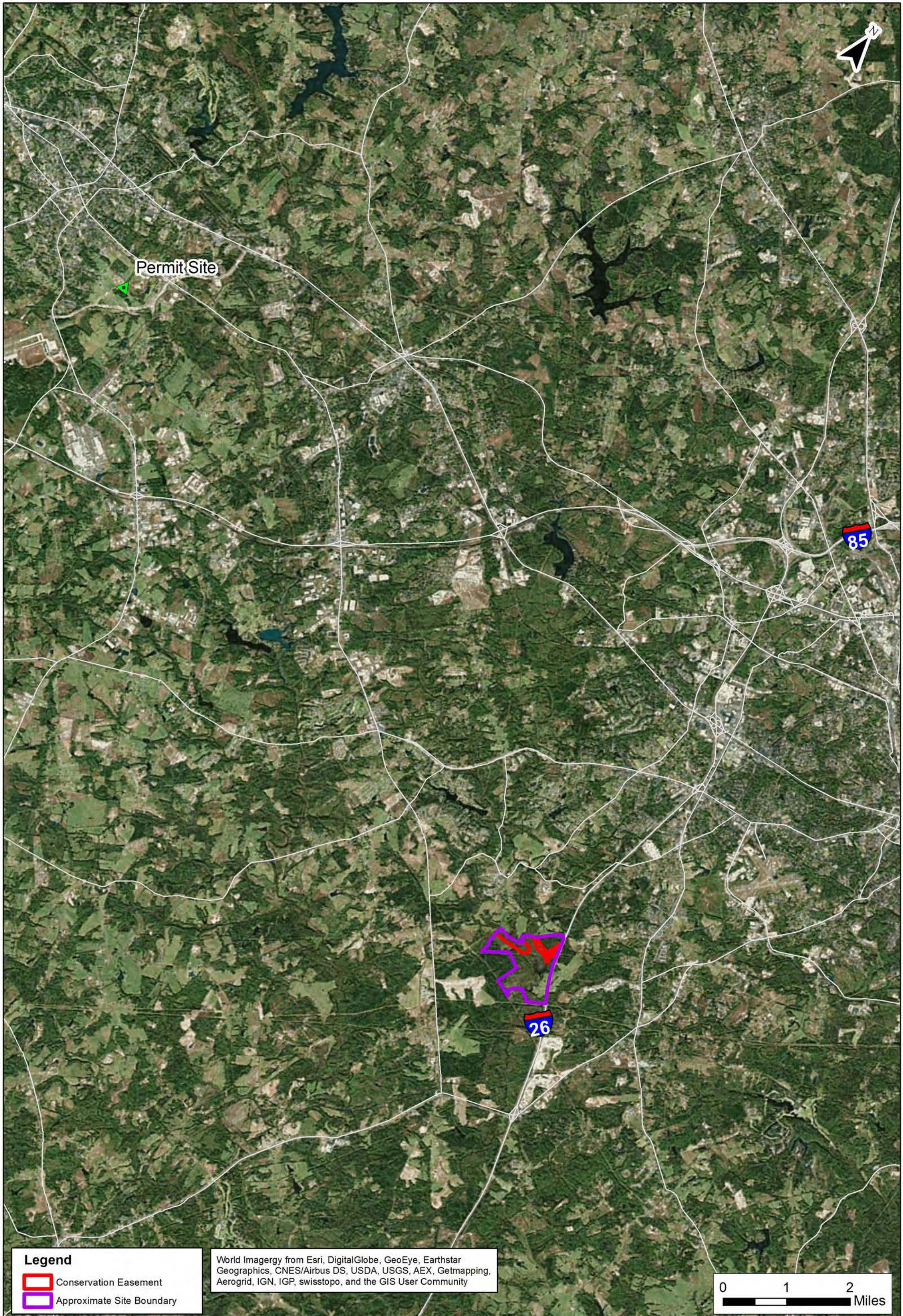
Any person may request, in writing, within the comment period specified in this notice, that a public hearing be held to consider this application. Requests for a public hearing shall state, with particularity, the reasons for holding a public hearing.

The decision whether to issue a permit will be based on an evaluation of the probable impact including cumulative impacts of the activity on the public interest. The benefit which reasonably may be expected to accrue from the project must be balanced against its reasonably

foreseeable detriments. All factors which may be relevant to the project will be considered including the cumulative effects thereof; among those are conservation, economics, aesthetics, general environmental concerns, wetlands, historic properties, fish and wildlife values, flood hazards, flood plain values, land use, navigation, shoreline erosion and accretion, recreation, water supply and conservation, water quality, energy needs, safety, food and fiber production and, in general, the needs and welfare of the people. A permit will be granted unless the District Engineer determines that it would be contrary to the public interest. In cases of conflicting property rights, the Corps cannot undertake to adjudicate rival claims.

The Corps is soliciting comments from the public; Federal, state, and local agencies and officials; Indian Tribes; and other interested parties in order to consider and evaluate the impacts of this activity. Any comments received will be considered by the Corps to determine whether to issue, modify, condition or deny a permit for this project. To make this decision, comments are used to assess impacts on endangered species, historic properties, water quality, general environmental effects, and the other public interest factors listed above. Comments are used in the preparation of an Environmental Assessment and/or an Environmental Impact Statement pursuant to the National Environmental Policy Act. Comments are also used to determine the need for a public hearing and to determine the overall public interest of the activity.

If there are any questions concerning this public notice, please contact Amy E. Cappellino, Project Manager, at 803-253-3992.





Permit Site

85

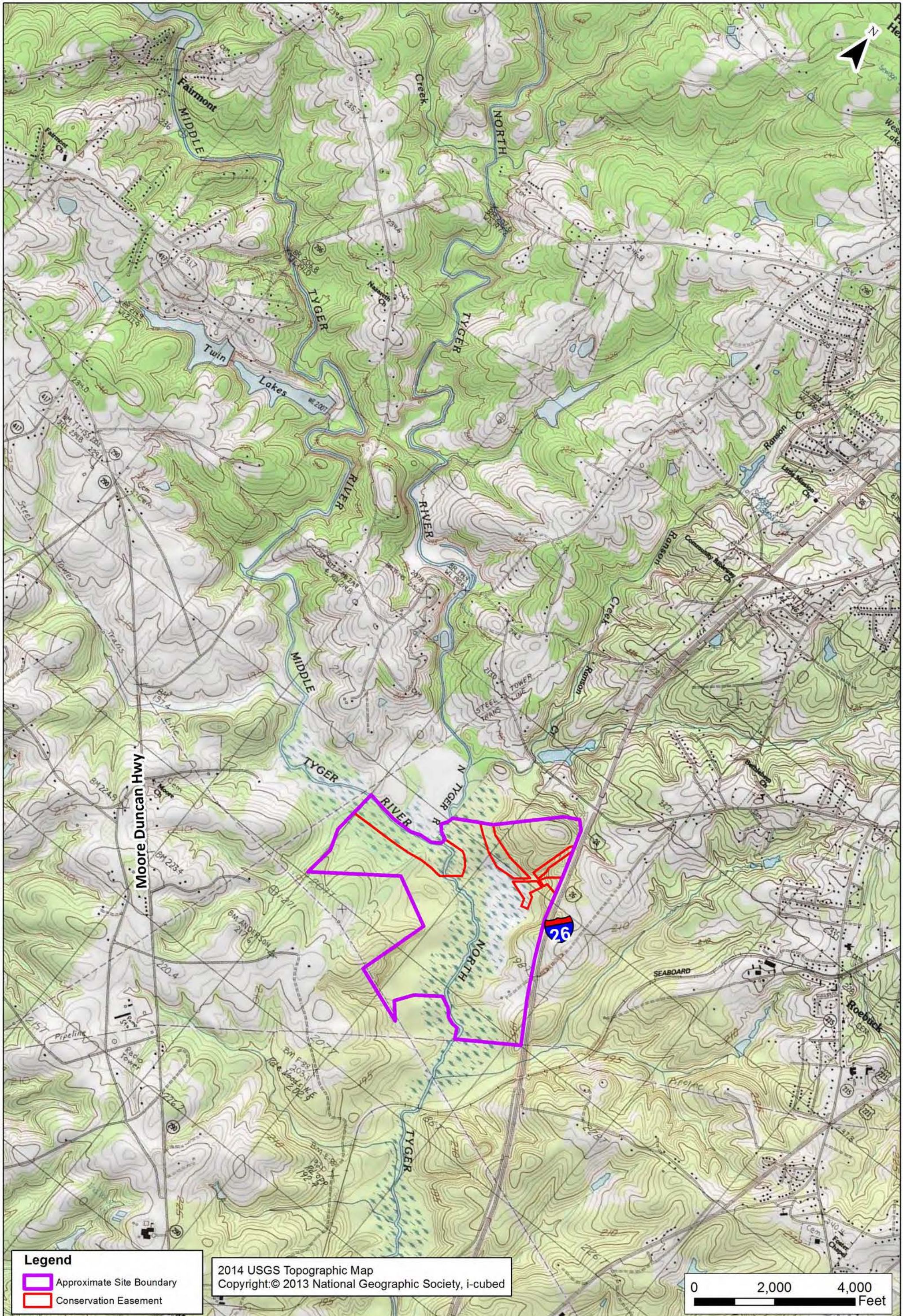
26

Legend

-  Conservation Easement
-  Approximate Site Boundary

World Imagery from Esri, DigitalGlobe, GeoEye, Earthstar Geographics, CNES/Airbus DS, USDA, USGS, AEX, Getmapping, Aerogrid, IGN, IGP, swisstopo, and the GIS User Community

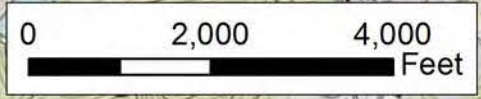
0 1 2 Miles



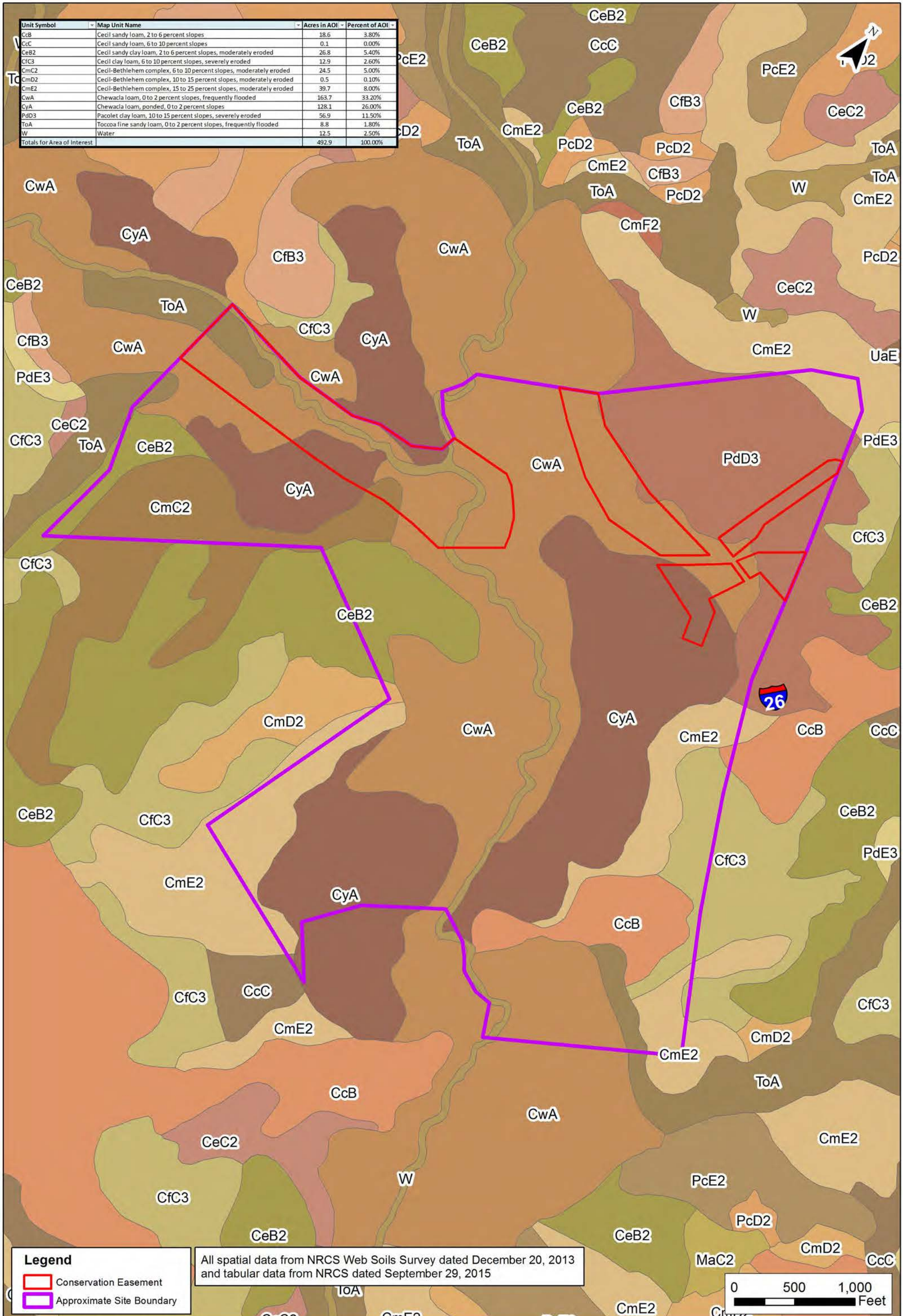
Legend

- Approximate Site Boundary
- Conservation Easement

2014 USGS Topographic Map
 Copyright: © 2013 National Geographic Society, i-cubed



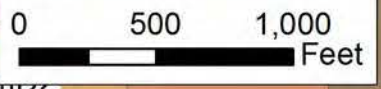
Unit Symbol	Map Unit Name	Acres in AOI	Percent of AOI
CcB	Cecil sandy loam, 2 to 6 percent slopes	18.6	3.80%
CcC	Cecil sandy loam, 6 to 10 percent slopes	0.1	0.00%
CeB2	Cecil sandy clay loam, 2 to 6 percent slopes, moderately eroded	26.8	5.40%
CfC3	Cecil clay loam, 6 to 10 percent slopes, severely eroded	12.9	2.60%
CmC2	Cecil-Bethlehem complex, 6 to 10 percent slopes, moderately eroded	24.5	5.00%
CmD2	Cecil-Bethlehem complex, 10 to 15 percent slopes, moderately eroded	0.5	0.10%
CmE2	Cecil-Bethlehem complex, 15 to 25 percent slopes, moderately eroded	39.7	8.00%
CwA	Chewacla loam, 0 to 2 percent slopes, frequently flooded	163.7	33.20%
CyA	Chewacla loam, ponded, 0 to 2 percent slopes	128.1	26.00%
PdD3	Pacolet clay loam, 10 to 15 percent slopes, severely eroded	56.9	11.50%
ToA	Toccoa fine sandy loam, 0 to 2 percent slopes, frequently flooded	8.8	1.80%
W	Water	12.5	2.50%
Totals for Area of Interest		492.9	100.00%

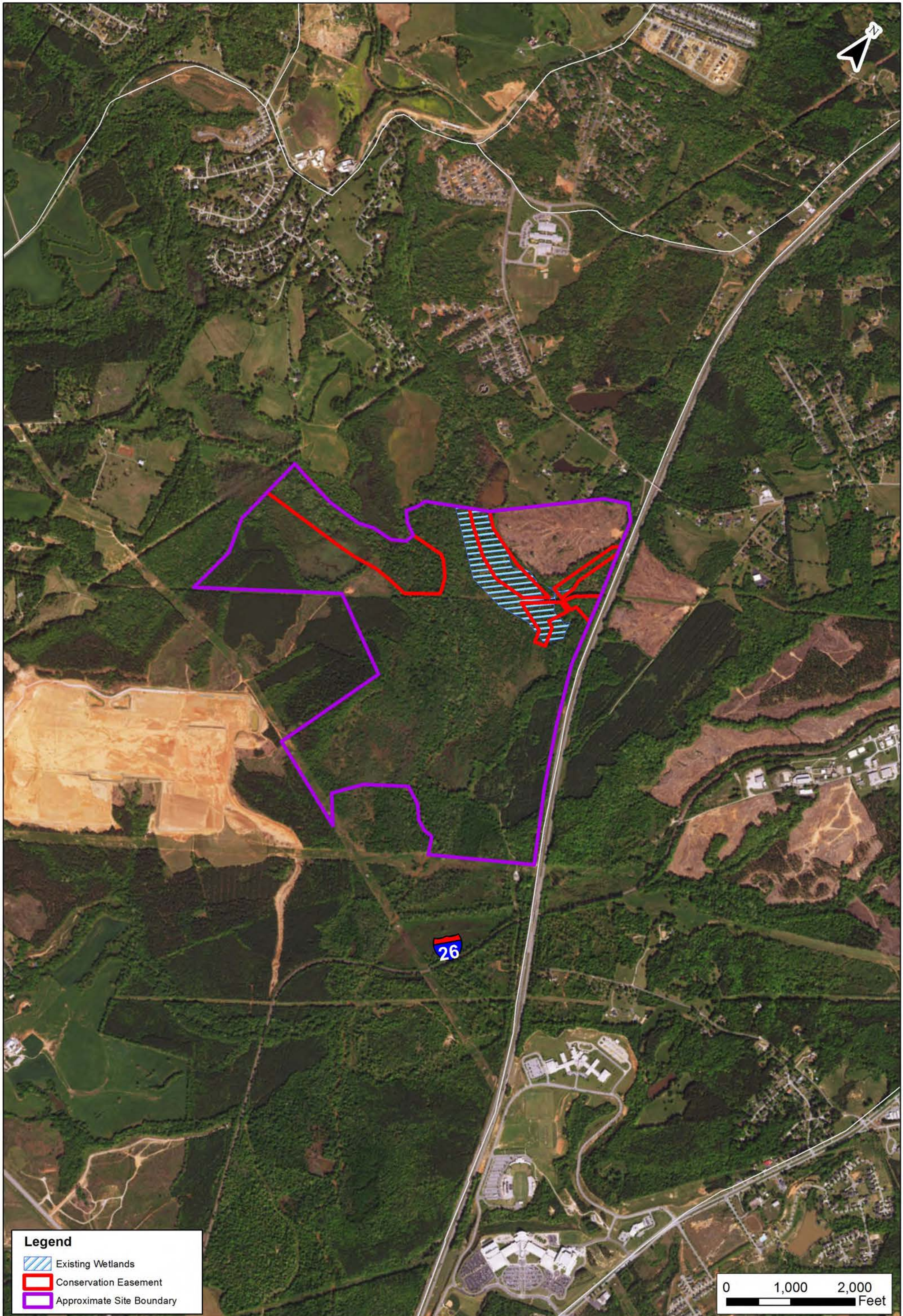


All spatial data from NRCS Web Soils Survey dated December 20, 2013 and tabular data from NRCS dated September 29, 2015

Legend

- Conservation Easement
- Approximate Site Boundary

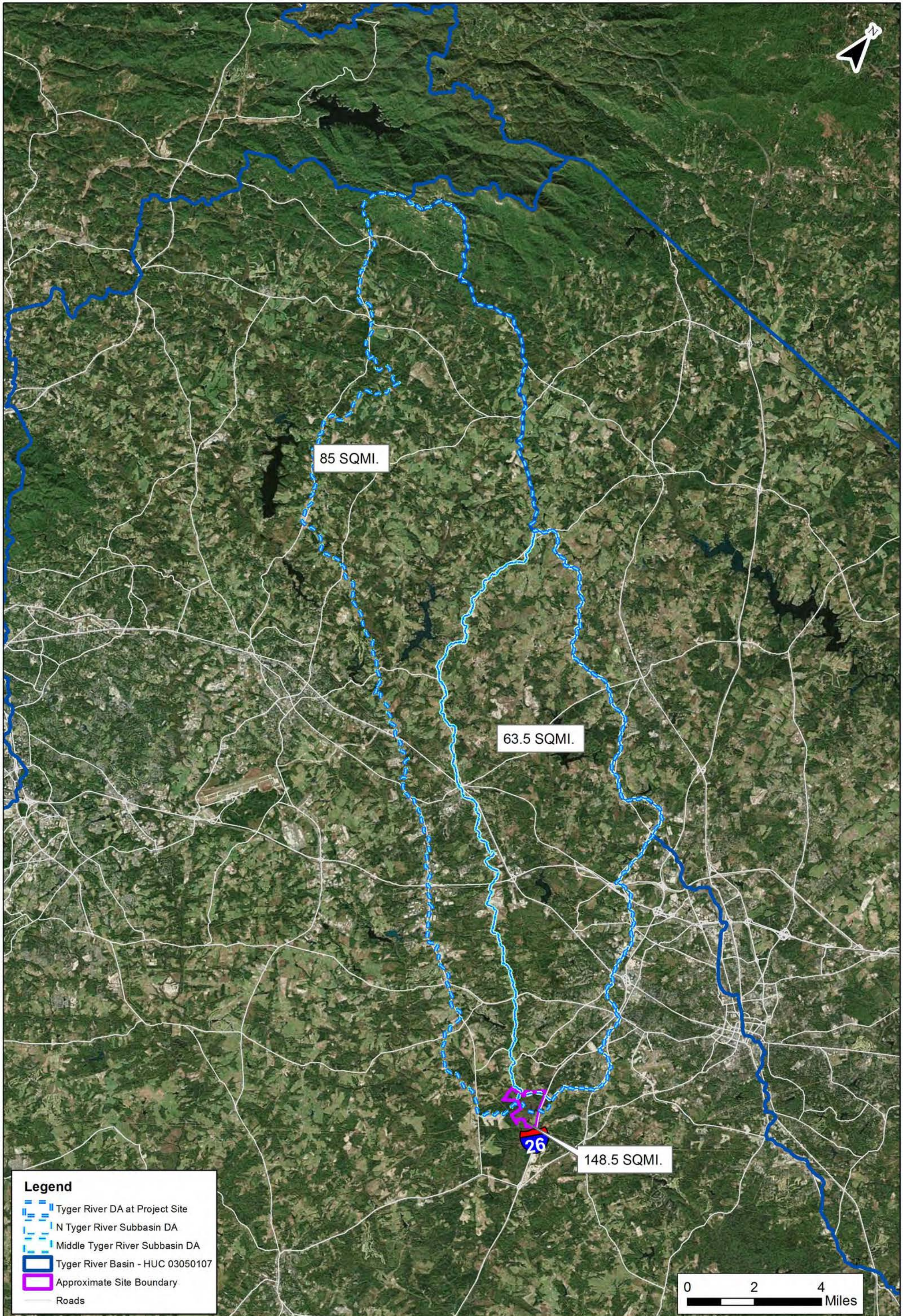




Legend

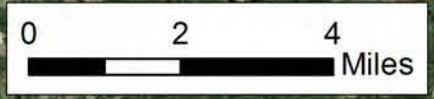
-  Existing Wetlands
-  Conservation Easement
-  Approximate Site Boundary

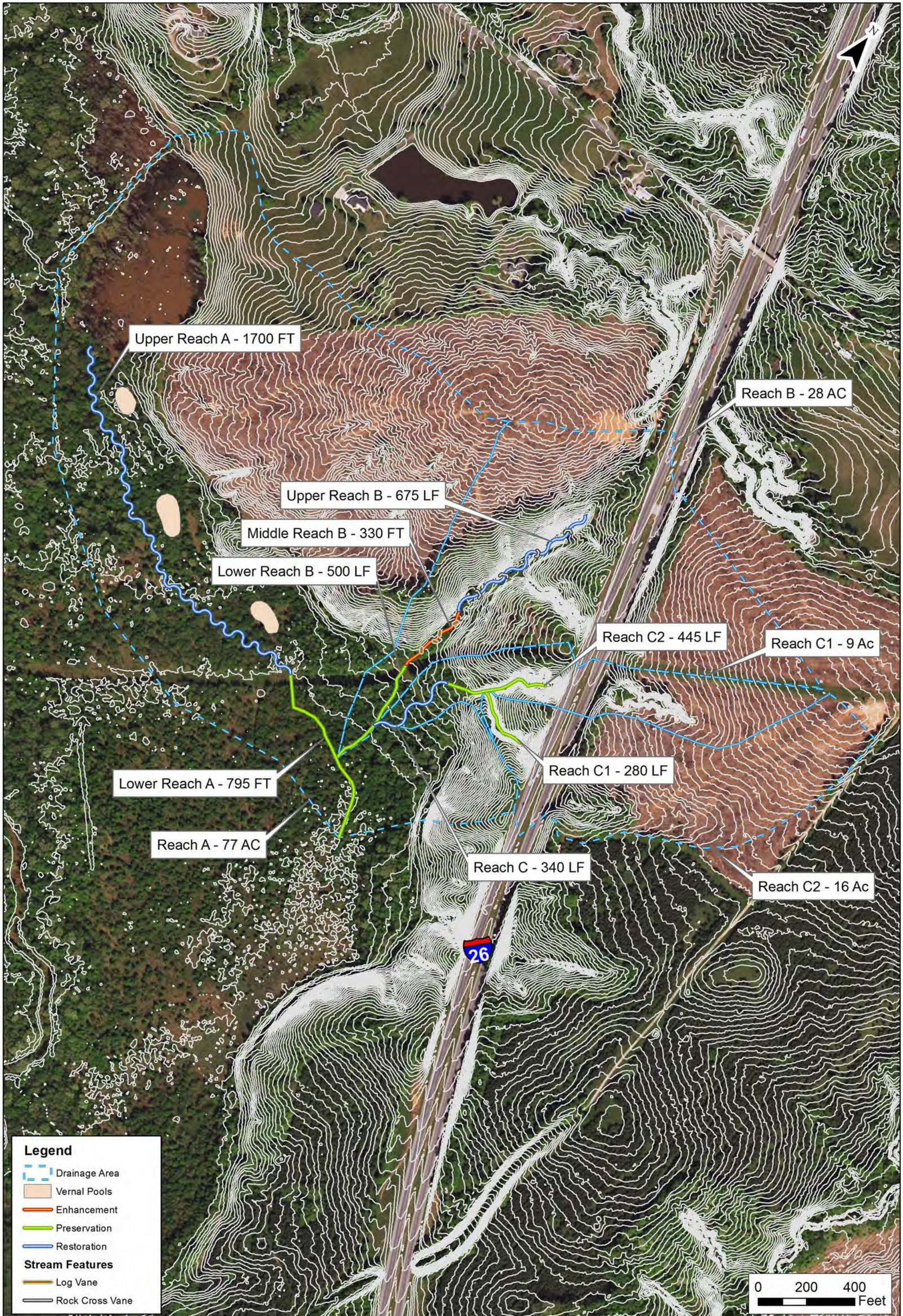
0 1,000 2,000
Feet

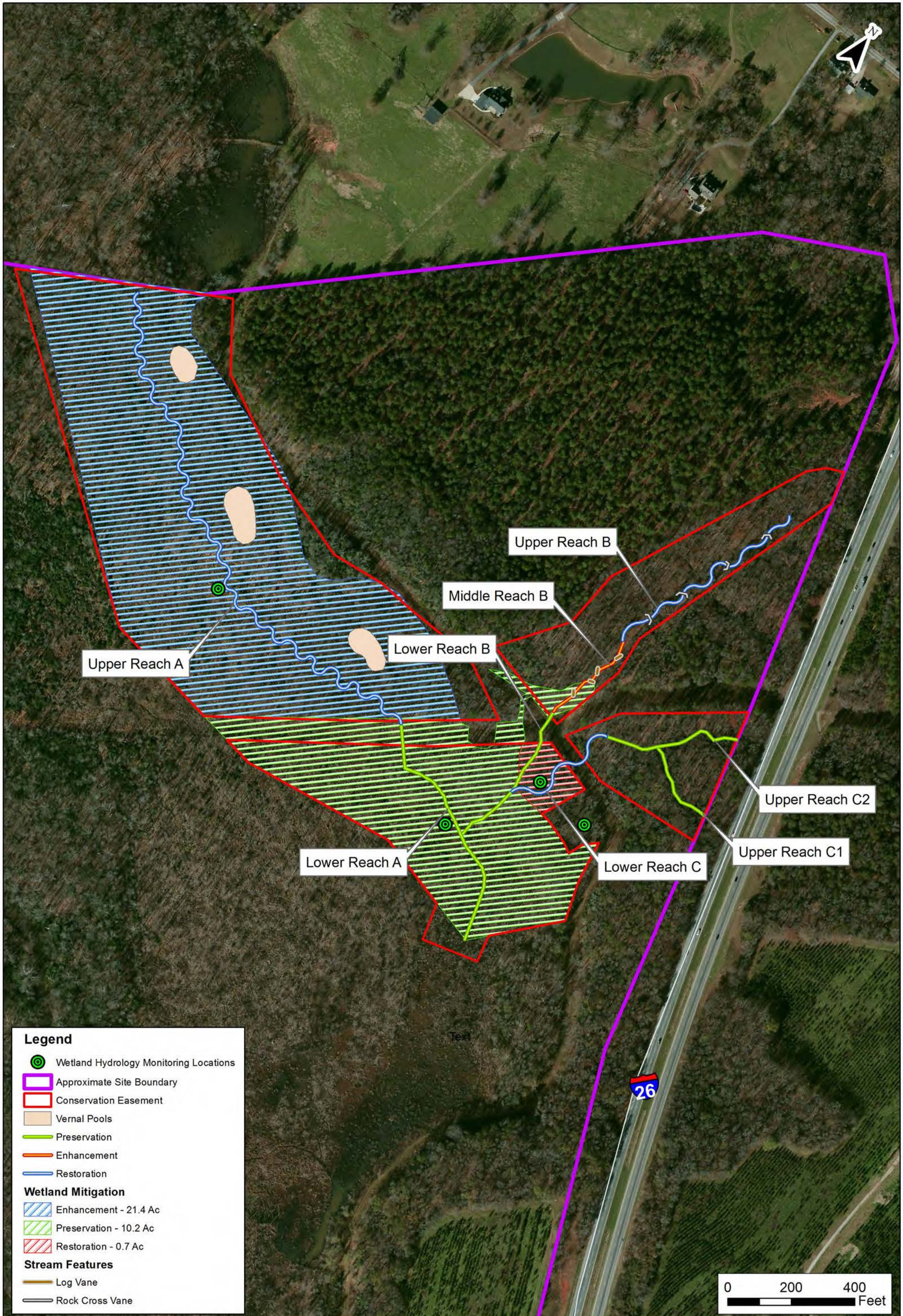


Legend

- ▬ Tyger River DA at Project Site
- ▬ N Tyger River Subbasin DA
- ▬ Middle Tyger River Subbasin DA
- ▬ Tyger River Basin - HUC 03050107
- ▬ Approximate Site Boundary
- ▬ Roads







Legend

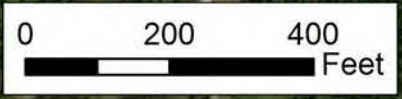
- Wetland Hydrology Monitoring Locations
- Approximate Site Boundary
- Conservation Easement
- Vernal Pools
- Preservation
- Enhancement
- Restoration

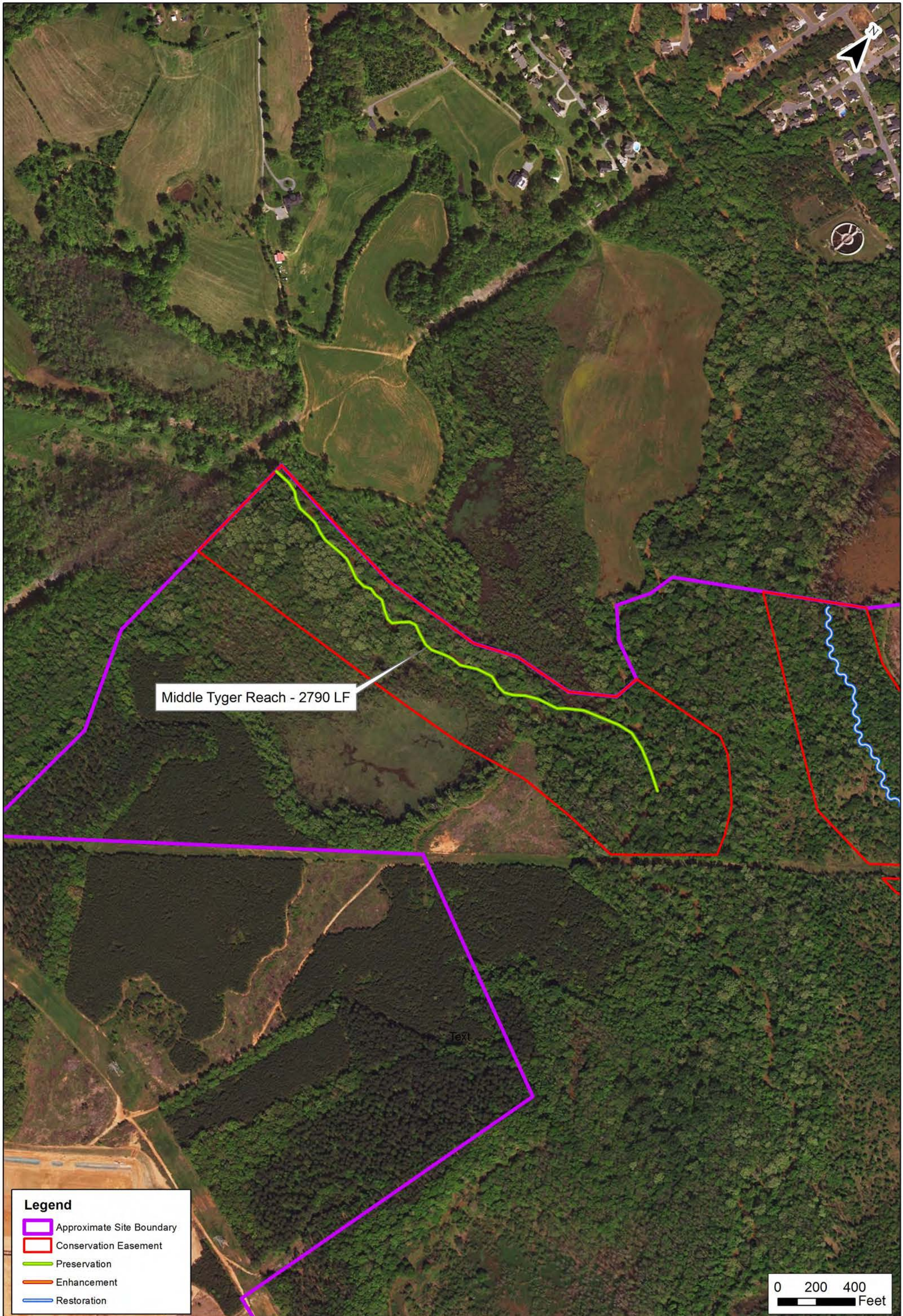
Wetland Mitigation

- Enhancement - 21.4 Ac
- Preservation - 10.2 Ac
- Restoration - 0.7 Ac

Stream Features

- Log Vane
- Rock Cross Vane

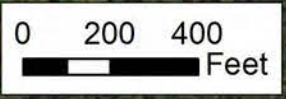


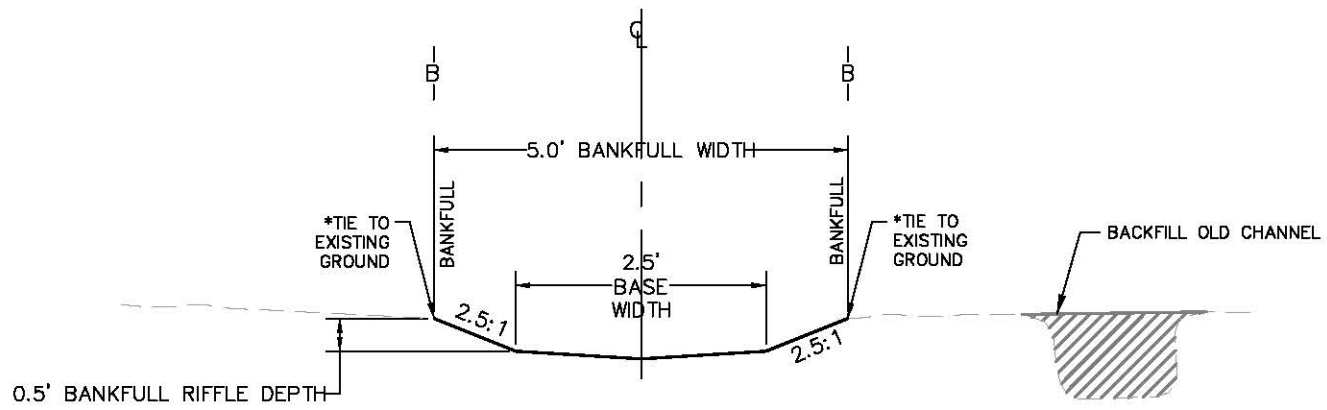


Middle Tyger Reach - 2790 LF

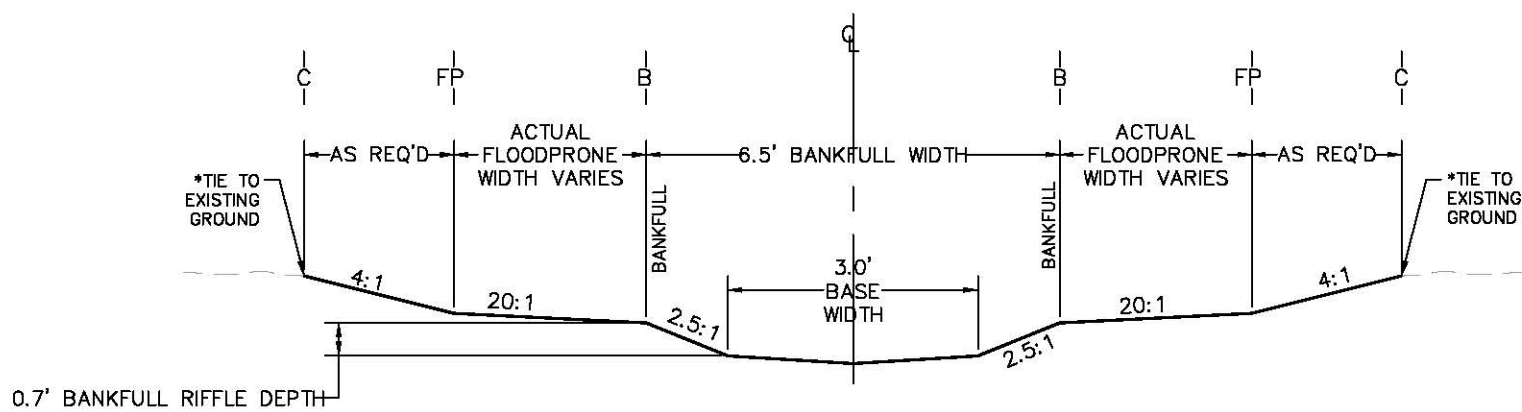
Legend

- Approximate Site Boundary
- Conservation Easement
- Preservation
- Enhancement
- Restoration

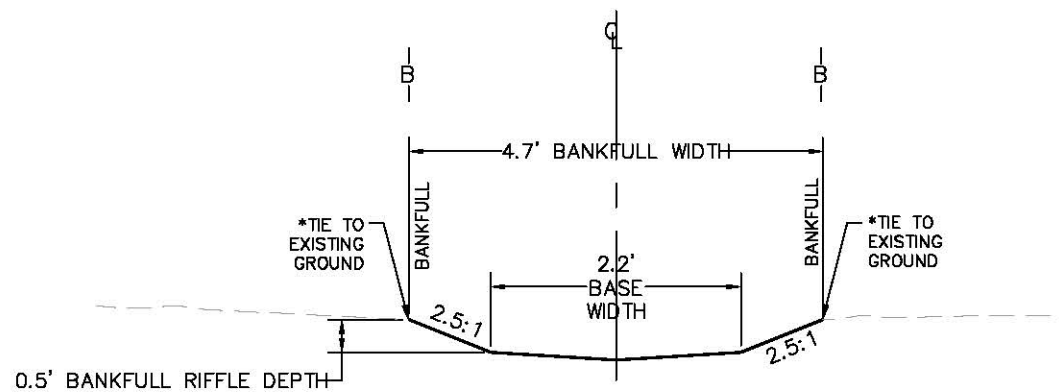




TYGER RIVER TRIBUTARIES
REACH A - PRIORITY 1 RESTORATION
 SEE PLAN VIEW FIGURE 6A



TYGER RIVER TRIBUTARIES
REACH B - PRIORITY 1/2 RESTORATION
 SEE PLAN VIEW FIGURE 6A



TYGER RIVER TRIBUTARIES
REACH C - PRIORITY 1 RESTORATION
 SEE PLAN VIEW FIGURE 6A

NOTES:

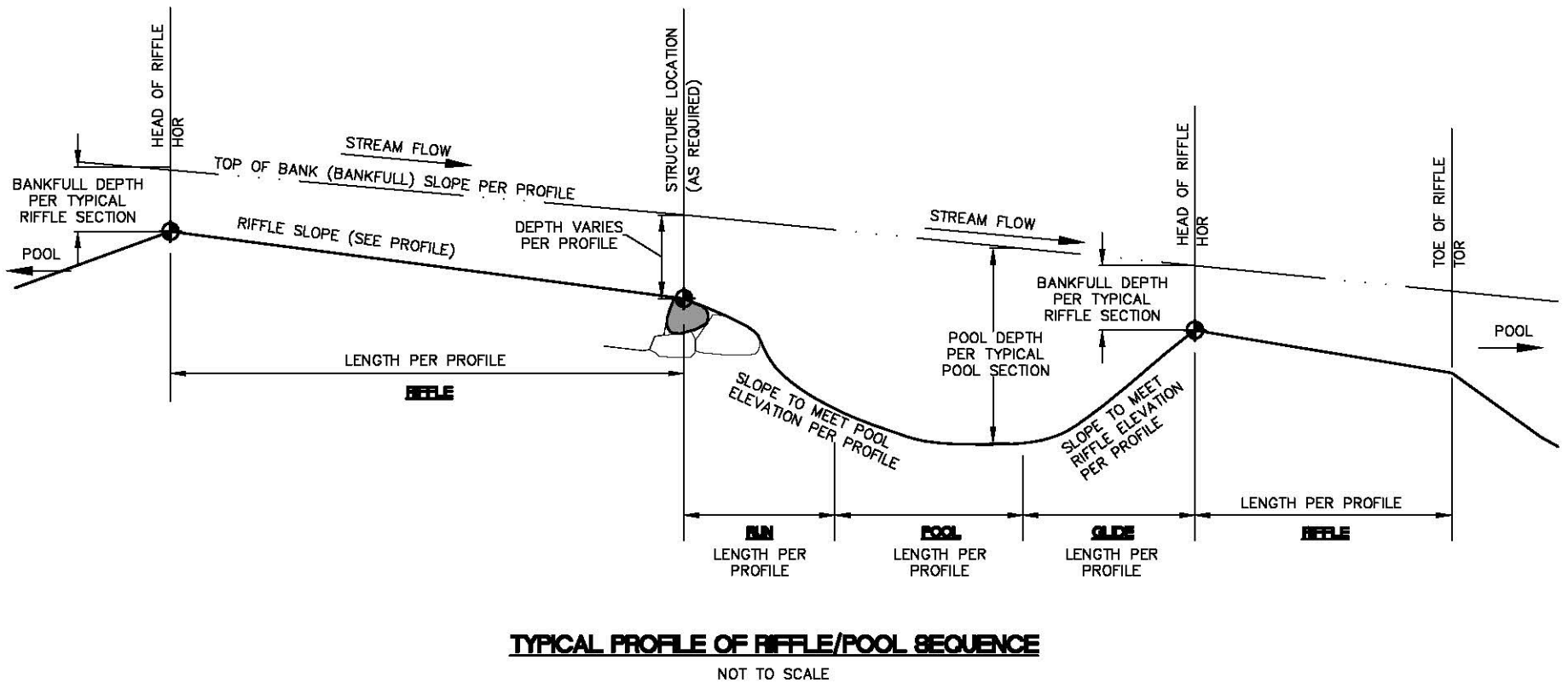
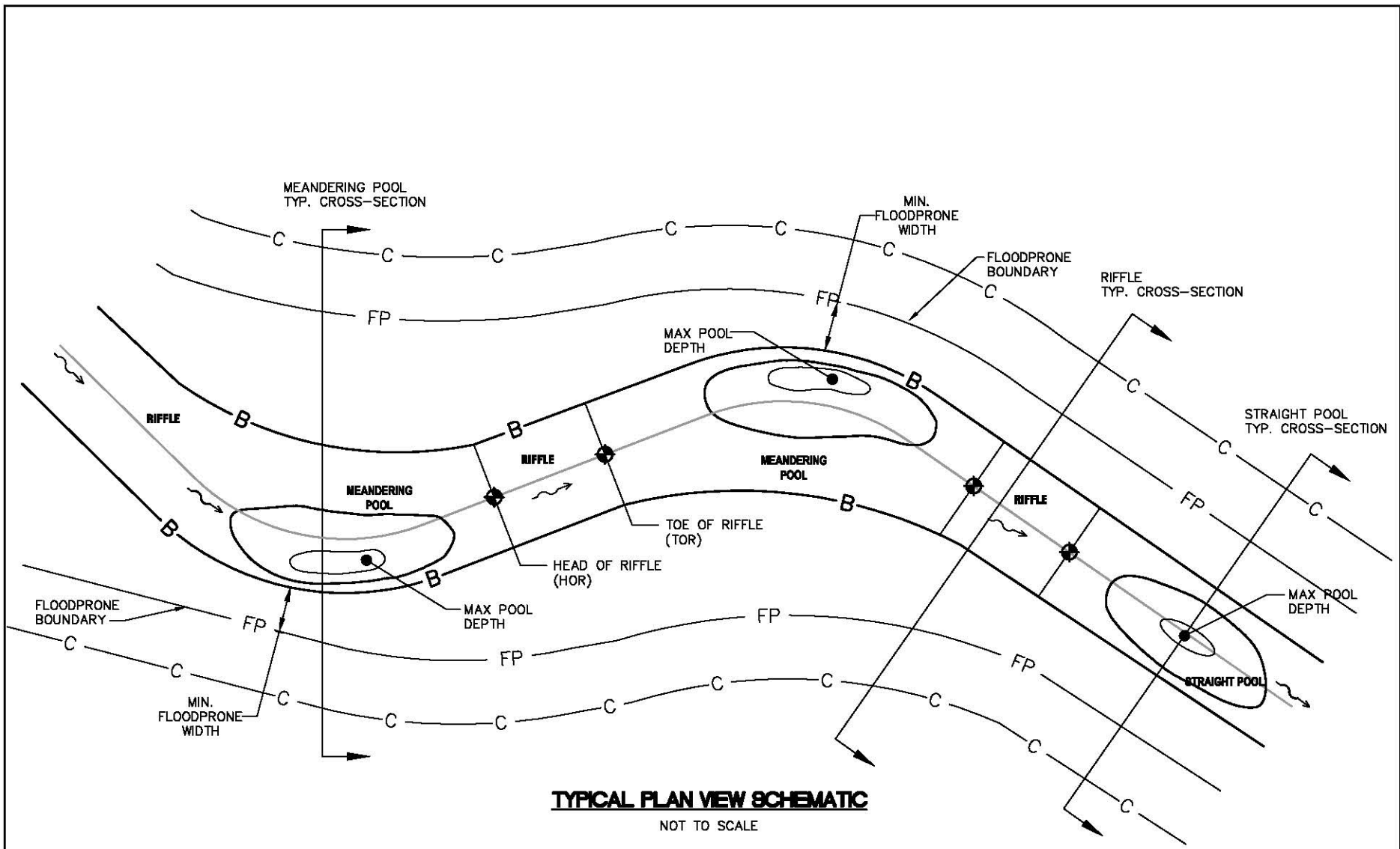
TYPICAL SECTIONS ARE PROVIDED TO GIVE THE GENERAL DIMENSIONS OF THE CHANNEL.

FINAL GRADING WILL GIVE THE CHANNEL A MORE "NATURAL" APPEARANCE AND ALLOW A SMOOTH TRANSITION FROM EXISTING CHANNEL TO NEW CHANNEL AND BETWEEN RIFFLE AND POOL SECTIONS.

ALL POOLS SHALL BE OVERDUG 1' TO ACCOUNT FOR SEDIMENTATION. BANKFULL AND POOL WIDTH DIMENSIONS SHOULD BE MAINTAINED.

RIFFLE FLOODPRONE WIDTH VARIES BASED ON THE TYPICAL POOL DIMENSIONS AND THE VALLEY WIDTH SHOWN ON THE PLAN SHEETS.

POOL TYPICAL SECTION SHOULD BE REVERSED IF INSIDE OF BEND IS ON LEFT SIDE.



NOTES:

TYPICAL SECTIONS ARE PROVIDED TO GIVE THE GENERAL DIMENSIONS OF THE CHANNEL.

FINAL GRADING WILL GIVE THE CHANNEL A MORE "NATURAL" APPEARANCE AND ALLOW A SMOOTH TRANSITION FROM EXISTING CHANNEL TO NEW CHANNEL AND BETWEEN RIFFLE AND POOL SECTIONS.

ALL POOLS SHALL BE OVERDUG 1' TO ACCOUNT FOR SEDIMENTATION. BANKFULL AND POOL WIDTH DIMENSIONS SHOULD BE MAINTAINED.

RIFFLE FLOODPRONE WIDTH VARIES BASED ON THE TYPICAL POOL DIMENSIONS AND THE VALLEY WIDTH SHOWN ON THE PLAN SHEETS.

LEGEND:

◆ ELEVATION CONTROL POINTS SHOWN TO ACT AS VERTICAL AND HORIZONTAL CONTROL POINT. POINT SHOULD BE VERIFIED BY DESIGNER BEFORE EARTHWORK BEGINS.

