

Appendix H
SHPO Consultation



September 08, 2022

Andrea Farmer
Archaeologist
Planning Branch
U.S. Army Corps of Engineers
Savannah District
Andrea.A.Farmer@usace.army.mil

Re: Murrells Inlet Federal Navigation Project, Environmental Assessment for
Maintenance Dredging
Murrells Inlet, Georgetown County, South Carolina
SHPO Project Nos. 16-ED0118 and 16-ED0078

Dear Andrea Farmer:

Thank you for your letter of September 01st, 2022, and project review submittal which we received on September 02nd, 2022 regarding the maintenance dredging in the Murrells Inlet Federal Navigation Project and placement of beneficial use material on Garden City Beach and Huntington Beach State Park. We also received maps, and Sidescan, Magnetometer, and, Multibeam Survey Results Murrells Inlet, Georgetown County, South Carolina as supporting documentation for this undertaking. The State Historic Preservation Office (SHPO) is providing comments to the U.S. Army Corps of Engineers (COE), Charleston District pursuant to Section 106 of the National Historic Preservation Act and its implementing regulations, 36 CFR 800. Consultation with the SHPO is not a substitution for consultation with Tribal Historic Preservation Offices, other Native American tribes including those with state recognition, local governments, or the public.

The undertaking consists of the dredging of the entrance channel last occurred in 2002, with beneficial use material placed at Garden City Beach and Huntington Beach State Park. Previous maintenance dredging occurred in 1988 and 2001. The dredging, as proposed, will not be outside the footprint of previous dredging and placement activities. The *Exploratory Magnetic Survey of Murrell's Inlet, South Carolina, and Portions of the Main Creek Inner Channel* conducted by the Corps in 1978 revealed the presence of a magnetic anomaly and a probable shipwreck in the vicinity of Inner Shoal B. Further testing was recommended and the magnetic anomaly was investigated in August 2022 through sidescan sonar, magnetometer and multibeam echo sounder. The survey results indicated that the undertaking, as currently planned, will avoid this anomaly,

and a 50-foot buffer will be implemented as an avoidance area. The SHPO concurs with the proposed avoidance area.

In a letter dated May 11, 2001, our office concurred that no properties listed on the National Register of Historic Places (NRHP) or determined eligible for inclusion on the NRHP would be affected by the proposed undertaking. The Area of Potential Effect (APE) was surveyed by New South Associates in 2006 to document any above-ground historic properties (*Historic Resources Survey of Georgetown County, South Carolina*). The NRHP-listed Murrells Inlet Historic District is located within the APE and adjacent to the study area.

Based on the Corps' description of the Area of Potential Effect (APE) and the identification of the Murrells Inlet Historic District within the APE, our office concurs with the Corps assessment that no properties listed in or eligible for listing in the National Register of Historic Places will be adversely affected by this project.

If archaeological materials are encountered during construction, the procedures codified at 36 CFR 800.13(b) will apply. Archaeological materials consist of any items, fifty years old or older, which were made or used by man. These items include, but are not limited to, stone projectile points (arrowheads), ceramic sherds, bricks, worked wood, bone and stone, metal and glass objects, and human skeletal materials. The federal agency or the applicant receiving federal assistance should contact our office immediately.

Please refer to SHPO Project Numbers 16-ED0118 and 16-ED0078 in any future correspondence regarding this project. If you have any questions, please contact me at (803) 896-6168 or RLarsen@scdah.sc.gov.

Sincerely,

Robert P. Larsen III

Robert P. Larsen III, MSc., RPA
Archaeologist
State Historic Preservation Office



DEPARTMENT OF THE ARMY
CHARLESTON DISTRICT, CORPS OF ENGINEERS
69-A HAGOOD AVENUE
CHARLESTON, S.C. 29403-5107

September 01, 2022

SUBJECT: Murrells Inlet Federal Navigation Project, Environmental Assessment for Maintenance Dredging, Georgetown County, South Carolina
SHPO Project No. 16-ED0118 and 16-ED0078

W. Eric Emerson, Ph.D.
Director, South Carolina Department of Archives and History
8301 Parklane Road
Columbia, SC 29223

Dear Dr. Emerson:

This letter is in reference to the U.S. Army Corps of Engineers, Charleston District's (Corps) maintenance dredging in the Murrells Inlet Federal Navigation Project and placement of beneficial use material on Garden City Beach and Huntington Beach State Park (Figure 1). An Environmental Assessment (EA) is in development for this undertaking to address the channel dredging and placement of dredged material.

Dredging of the entrance channel last occurred in 2002, with beneficial use material placed at Garden City Beach and Huntington Beach State Park. Previous maintenance dredging occurred in 1988 and 2001. The dredging, as proposed, will not be outside the footprint of previous dredging and placement activities. In accordance with Section 106 of the National Historic Preservation Act of 1966 (NHPA), as amended, the Corps performed a remote cultural resources survey in 1978 (*Exploratory Magnetic Survey of Murrell's Inlet, South Carolina, and Portions of the Main Creek Inner Channel*) for the project area. The survey revealed the presence of a magnetic anomaly and potential shipwreck in proximity to Inner Shoal B, and additional testing was recommended if avoidance was not possible. The magnetic anomaly was further investigated in 2022 through surveys consisting of sidescan sonar, magnetometer, and multibeam (Enclosure 1). The results of the survey revealed that the current undertaking, as proposed, will avoid this anomaly, and a 50-foot buffer will be implemented as an avoidance area (Figure 2).

In a letter dated May 11, 2001, your office concurred that no properties listed on the National Register of Historic Places (NRHP) or determined eligible for inclusion on the NRHP would be affected by the proposed undertaking. The Area of Potential Effect (APE) was surveyed by New South Associates in 2006 to document any above-ground historic properties (*Historic Resources Survey of Georgetown County, South Carolina*). The NRHP-listed Murrells Inlet Historic District is located within the APE and adjacent to the study area. The Corps recommends that the undertaking, as proposed, will have no

adverse effect on this resource or any other NRHP-listed or eligible resources in the APE.

Pursuant to Section 106 of NHPA, the Charleston District requests your office provide concurrence with the determination of no adverse effect. Please provide any comments regarding this proposed work within 30 calendar days of receipt of this letter to Ms. Andrea Farmer, Archaeologist, Planning Branch, Savannah District, at Andrea.A.Farmer@usace.army.mil or by phone at (912) 412-3363.

Sincerely,

Nancy Parrish

Nancy A. Parrish
Chief, Planning Branch

Encl

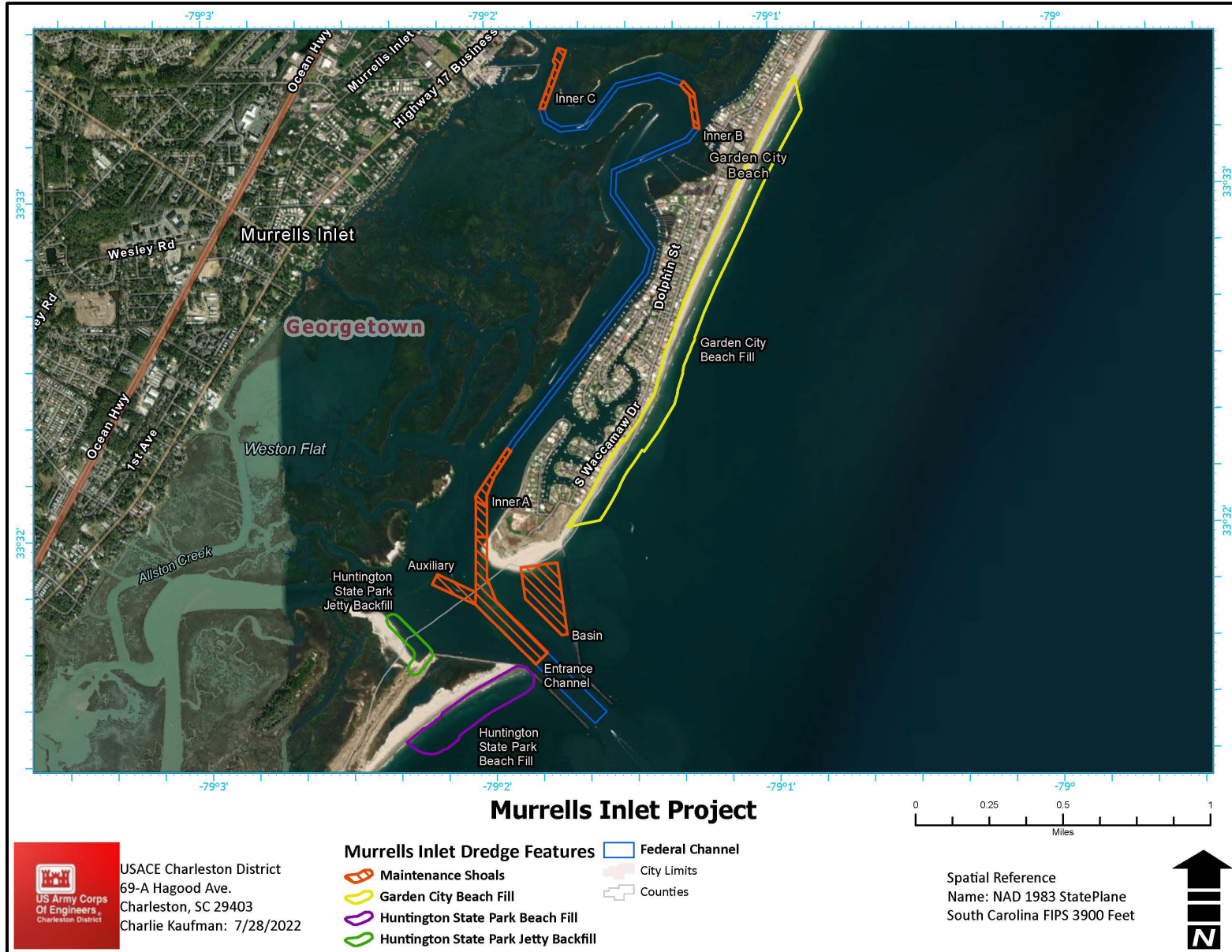


Figure 1. Project Area



Figure 2. Anomaly Footprint and Buffer Zone