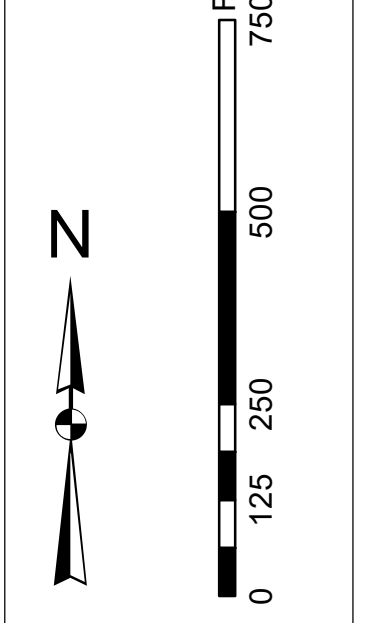


In its own behalf, the U.S. Army Corps of Engineers, Charleston District Office, Special Data Branch has made this report, including the data and information contained herein, available to the public. This information is provided for informational purposes only and is not intended to be used for navigation. The user assumes all responsibility for the use of this information. The Corps of Engineers does not warrant the accuracy or completeness of the information provided herein. The Corps of Engineers is not responsible for any errors or omissions in this report. The Corps of Engineers is not responsible for any damage or injury resulting from the use of this information. The Corps of Engineers is not responsible for any loss of life or property resulting from the use of this information. The Corps of Engineers is not responsible for any other consequences resulting from the use of this information. The Corps of Engineers is not responsible for any other consequences resulting from the use of this information.

Production Notes:
1. This chart is a preliminary chart.
2. The information on this chart is based on the information provided by the user.
3. The information on this chart is based on the information provided by the user.
4. The information on this chart is based on the information provided by the user.



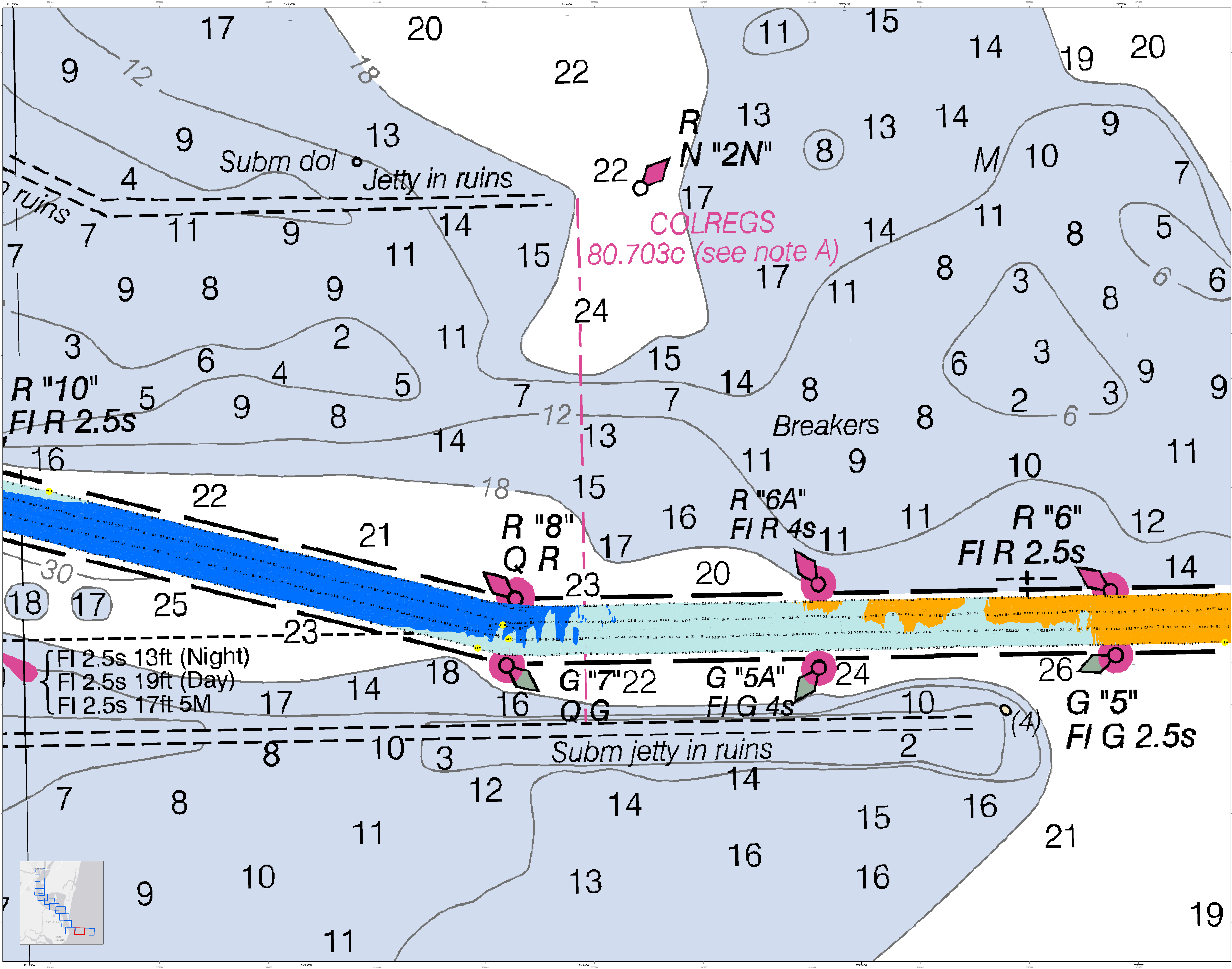
Depth Soundings:
1. 1 to 10 fathoms
2. 11 to 20 fathoms
3. 21 to 30 fathoms
4. 31 to 40 fathoms
5. 41 to 50 fathoms
6. 51 to 60 fathoms
7. 61 to 70 fathoms
8. 71 to 80 fathoms
9. 81 to 90 fathoms
10. 91 to 100 fathoms

Legend:
1. Obstruction
2. Light
3. Buoy
4. Beacon
5. Daymark
6. Nightmark
7. Daymark
8. Nightmark
9. Daymark
10. Nightmark

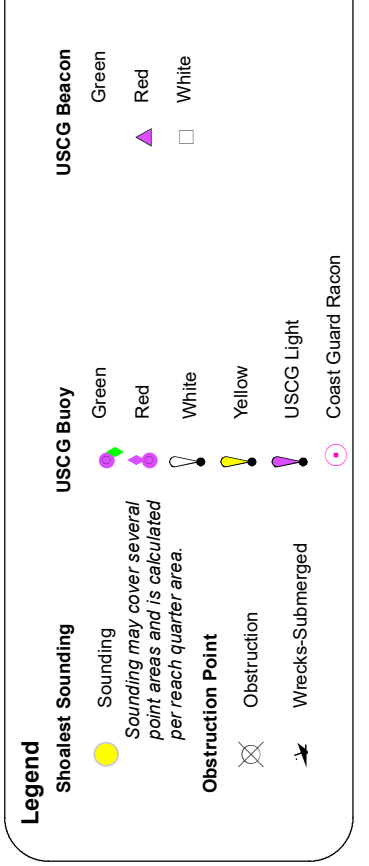
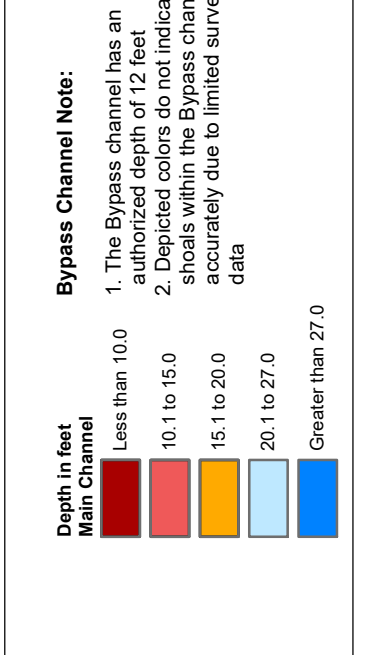
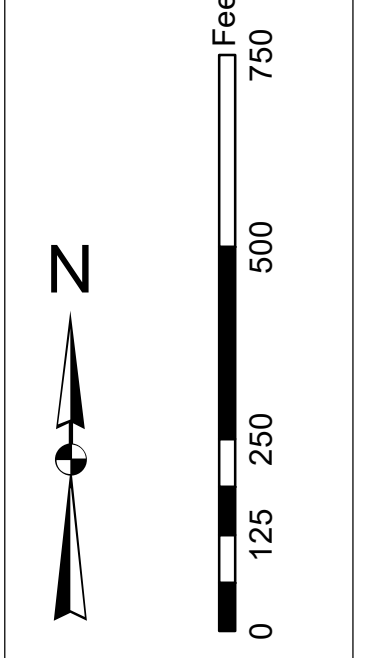
U.S. Army Corps of Engineers Charleston District Office Special Data Branch Charleston, SC 29405 CESAC-GIS@USACE.ARMY.MIL	Designed By: Hydro Software v3.82	Reviewed By: 1:5000	Scale: 1 inch = 255 feet	Projection: NAD 1983 StatePlane South Carolina FIPS 3900 Feet
U.S. Army Corps of Engineers Charleston District Office Special Data Branch Charleston, SC 29405 CESAC-GIS@USACE.ARMY.MIL	Produced On: 03 JUNE 2022	Project Reference Number: PC00010	Sheet Name: CONDITION	Sheet Number: 3900

Georgetown Harbor Channel Survey
The information depicted on this map represents the results of surveys made on the dates indicated and can only be considered as indicating the general character of the bottom. The information is not intended to be used for navigation. The user assumes all responsibility for the use of this information. The Corps of Engineers is not responsible for any damage or injury resulting from the use of this information. The Corps of Engineers is not responsible for any loss of life or property resulting from the use of this information. The Corps of Engineers is not responsible for any other consequences resulting from the use of this information.

Concluded on: **03 JUNE 2022**
Georgetown, South Carolina

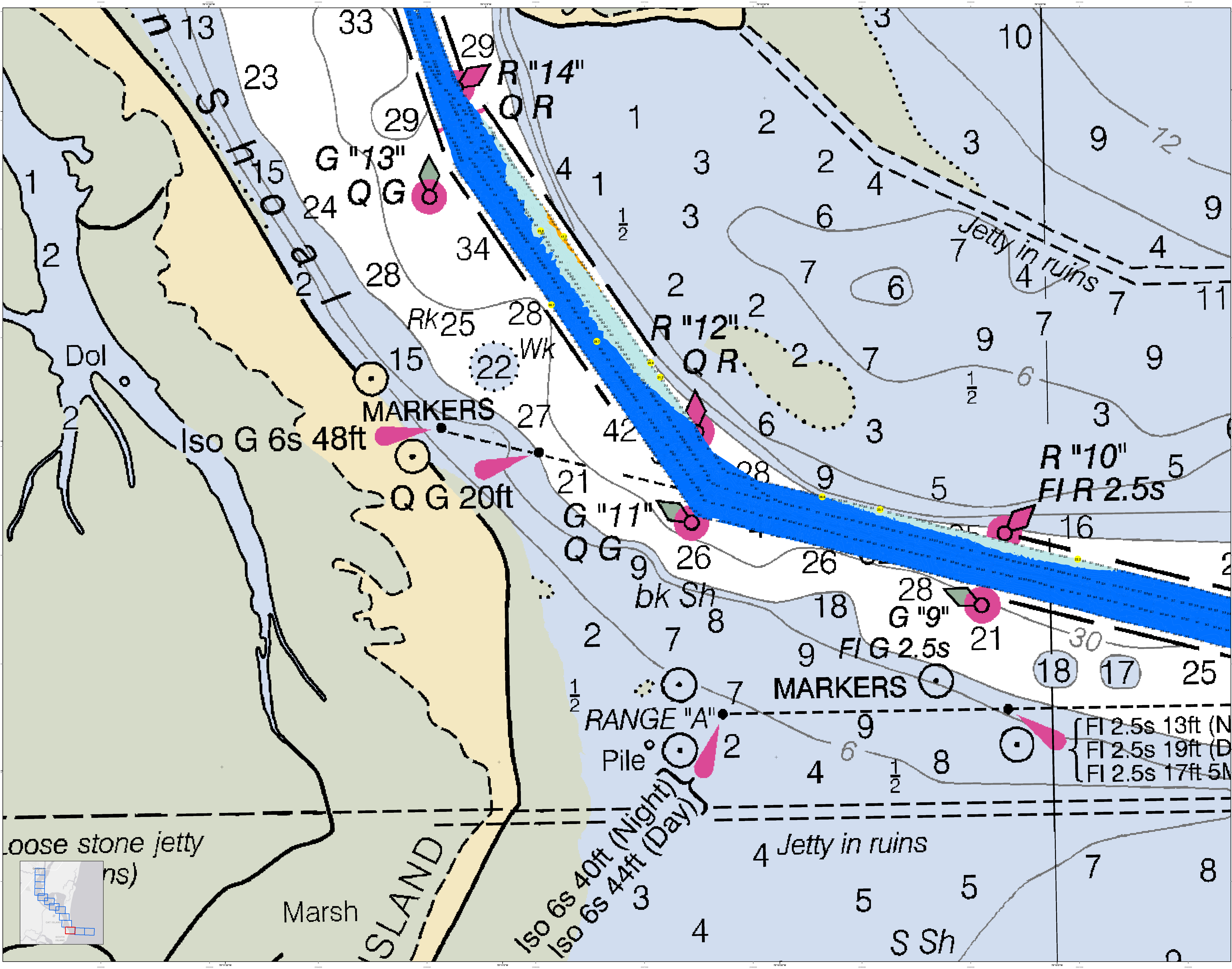


Production Notes:
 1. This is a preliminary survey chart. It is not to be used for navigation. It is intended for informational purposes only. It is not to be used for navigation. It is intended for informational purposes only.
 2. This chart is based on the latest available data. It is not to be used for navigation. It is intended for informational purposes only.
 3. This chart is based on the latest available data. It is not to be used for navigation. It is intended for informational purposes only.
 4. This chart is based on the latest available data. It is not to be used for navigation. It is intended for informational purposes only.
 5. This chart is based on the latest available data. It is not to be used for navigation. It is intended for informational purposes only.



Designed By:	U.S. Army Corps of Engineers	Production Date:	03 JUNE 2022
Reviewed By:	U.S. Army Corps of Engineers	Survey Date:	16 JUNE 2022
Scale:	1 inch = 225 feet	Project Reference Number:	PC001D
Revision:	1	Survey State:	CONDITION
Location:	Georgetown, South Carolina	Projection:	NAD 1983 StatePlane South Carolina FIPS 3900 Feet

Georgetown Harbor Channel Survey
 The information depicted on this map represents the results of surveys made on the dates indicated and can only be considered as indicating the general condition of the channel. It is not to be used for navigation. It is intended for informational purposes only.
 Conducted on: 03 JUNE 2022
 Georgetown, South Carolina



U.S. Army Corps of Engineers
Charleston District

Production Date: 03 JUNE 2022
Survey Date: 03 JUNE 2022
Production Date: 16 JUNE 2022

Designed By: Jethro Software v3.82
Reviewed By: Absolute Scale
Scale: 1:5000
Horizontal Scale: 1 inch = 255 feet
Vertical Scale: 1 inch = 255 feet
Projection: NAD 1983 StatePlane South Carolina FIPS 3800 Feet

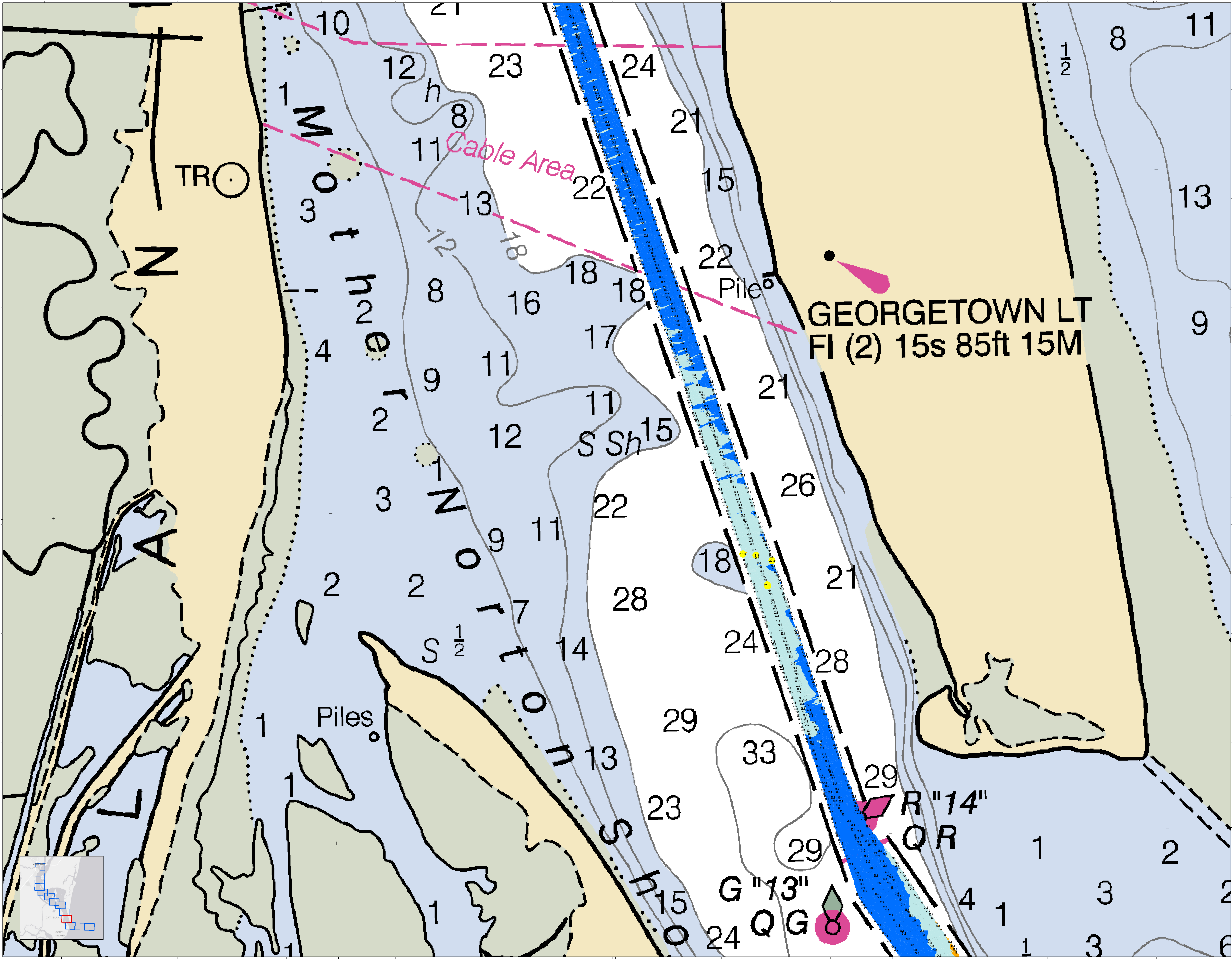
U.S. Army Corps of Engineers District Office: CHARLESTON, SOUTH CAROLINA
Project Reference Number: 1503D
Survey Station: C001
Chart Title: GEORGETOWN HARBOR CHANNEL
Scale: 1:5000
Projection: NAD 1983 StatePlane South Carolina FIPS 3800 Feet

Legend:

- Depth Contours: 10, 15, 20, 25, 30, 35, 40, 45, 50, 55, 60, 65, 70, 75, 80, 85, 90, 95, 100
- Navigation Markers: Iso G 6s 48ft, Q G 20ft, G "11", G "9", R "10" FIR 2.5s, R "12", R "14", G "13", Iso 6s 40ft (Night), Iso 6s 44ft (Day)
- Other Features: Jetty in ruins, Loose stone jetty, Marsh, ISLAND, Dol, Pile, bk Sh, FIG 2.5s, FI 2.5s 13ft (N), FI 2.5s 19ft (D), FI 2.5s 17ft 5M

Georgetown Harbor Channel Survey
 The information depicted on this map represents the results of surveys made on the dates indicated and can only be considered as indicating the general character of the bottom and is not to be used for navigation. Conducted on: 03 JUNE 2022
 Georgetown, South Carolina

SHEET REFERENCE NUMBER: C001
SHEET 3 OF 13



U.S. Army Corps of Engineers
 Charleston District

In its capacity as the U.S. Army Corps of Engineers, Charleston District Office, Special Data Branch has made this chart, including the information depicted on this map, available to the public. This information is provided for informational purposes only and is not intended to be used for navigation. The user assumes all responsibility for the accuracy and completeness of the information. The user acknowledges that the information is provided as is and that the user is not to be held liable for any errors or omissions. The user is advised to consult the appropriate nautical publications for the latest information.

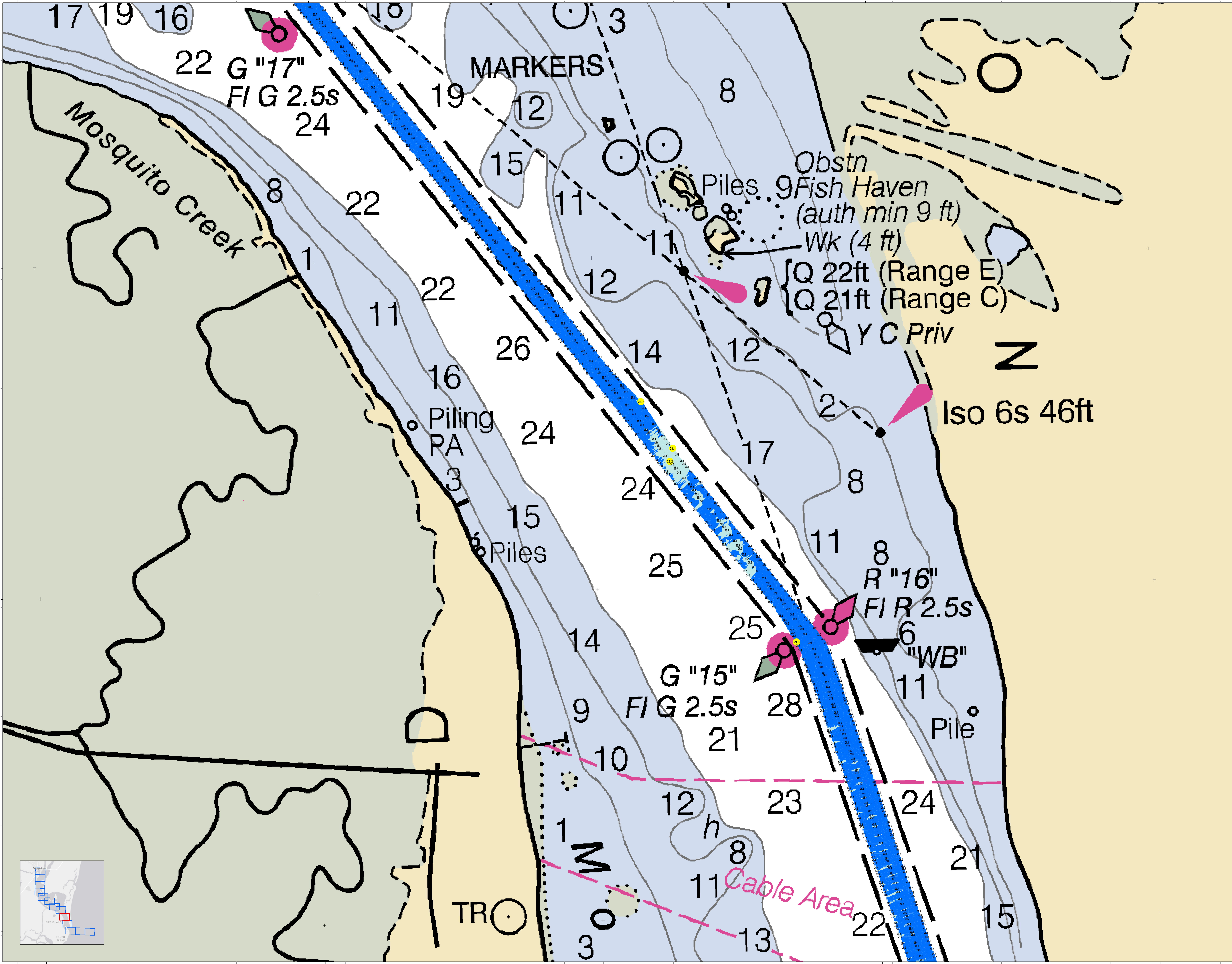
Legend
 Soundings: 1 to 10, 11 to 15, 16 to 20, 21 to 25, 26 to 30, 31 to 35, 36 to 40, 41 to 45, 46 to 50, 51 to 55, 56 to 60, 61 to 65, 66 to 70, 71 to 75, 76 to 80, 81 to 85, 86 to 90, 91 to 95, 96 to 100
 Cable Area: Blue line with arrows
 Light: Pink teardrop symbol
 Piles: Yellow circles
 R "14": Pink diamond
 G "13": Green diamond
 QR: Pink circle
 Other symbols: Various navigational markers

Scale
 0 125 250 500 750 Feet
 0 125 250 500 Meters

Production Date: 03 JUNE 2022
Project Reference Number: P030010
Survey Station: CONDITION
Scale: 1 inch = 255 feet
Projection: NAD 1983 StatePlane South Carolina FIPS 3800 Feet

Georgetown Harbor Channel Survey
 The information depicted on this map represents the results of surveys made on the dates indicated and can only be considered as indicating the general character of the bottom. It is not to be used for navigation. Concluded on: 03 JUNE 2022
 Georgetown, South Carolina

SHEET REFERENCE NUMBER
 C001
 SHEET 4 OF 13



U.S. Army Corps of Engineers
Charleston District

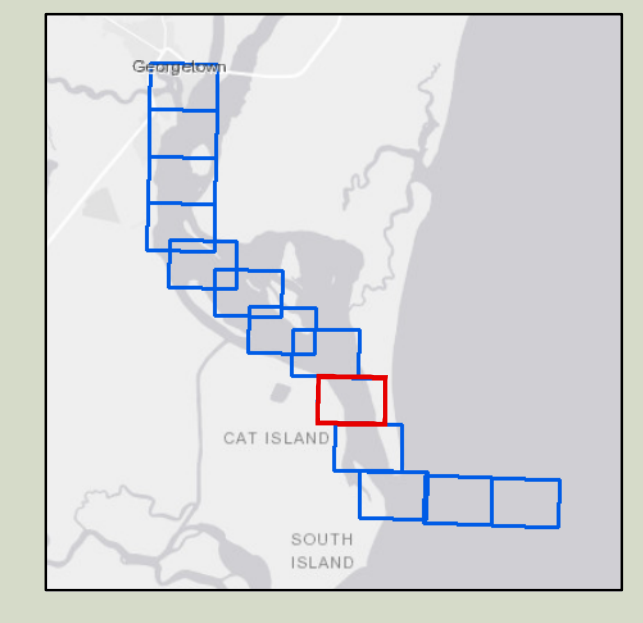
Georgetown Harbor Channel Survey
The information depicted on this map represents the results of surveys made on the dates indicated and can only be considered as indicating the general character of the bottom. It is not to be used for navigation.
Concluded on: 03 JUNE 2022
Georgetown, South Carolina

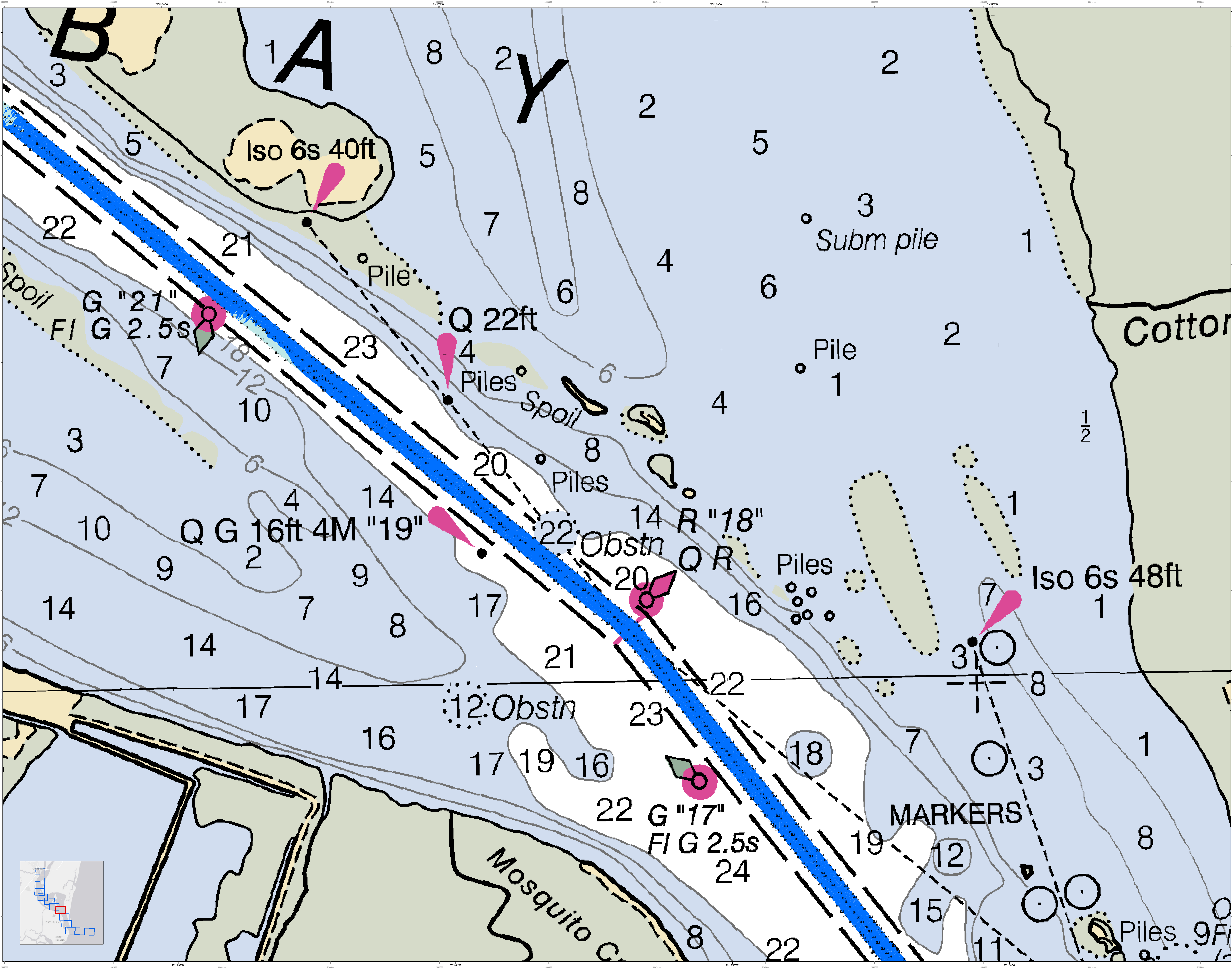
Legend:

- Soundings: 0-5, 6-10, 11-15, 16-20, 21-25, 26-30
- Obstructions: Obstrn, Piles, Fish Haven, Y C Priv
- Navigation Aids: Iso 6s 46ft, Y C Priv
- Channel Features: Cable Area, Mosquito Creek, Piling RA, Piles

Scale: 1 inch = 225 feet
Projection: NAD 1983 StatePlane South Carolina FIPS 3800 Feet

Designed By:	lehydro Software v3.82	Survey Date:	03 JUNE 2022	Production Date:	16 JUNE 2022
Reviewed By:	ABSOLUTE SCALE	Project Reference Number:	1303D	Project Reference Number:	PC0001D
Scale:	1:13,035	Survey Scale:	CONDITION	Survey Scale:	CONDITION
Projection:	NAD 1983 StatePlane South Carolina FIPS 3800 Feet	Projection:	NAD 1983 StatePlane South Carolina FIPS 3800 Feet		





U.S. Army Corps of Engineers
Charleston District

Georgetown Harbor Channel Survey
The information depicted on this map represents the results of surveys made on the dates indicated and can only be considered as indicating the general location of obstructions.

Produced on: 03 JUNE 2022
Georgetown, South Carolina

Legend

- Water Depth: 1 to 10, 11 to 15, 16 to 20, 21 to 25, 26 to 30, 31 to 35, 36 to 40, 41 to 45, 46 to 50, 51 to 55, 56 to 60, 61 to 65, 66 to 70, 71 to 75, 76 to 80, 81 to 85, 86 to 90, 91 to 95, 96 to 100
- Obstruction: Obstruction, Obstruction
- Marker: Marker, Marker
- Other: Other, Other

Scale
1 inch = 255 feet

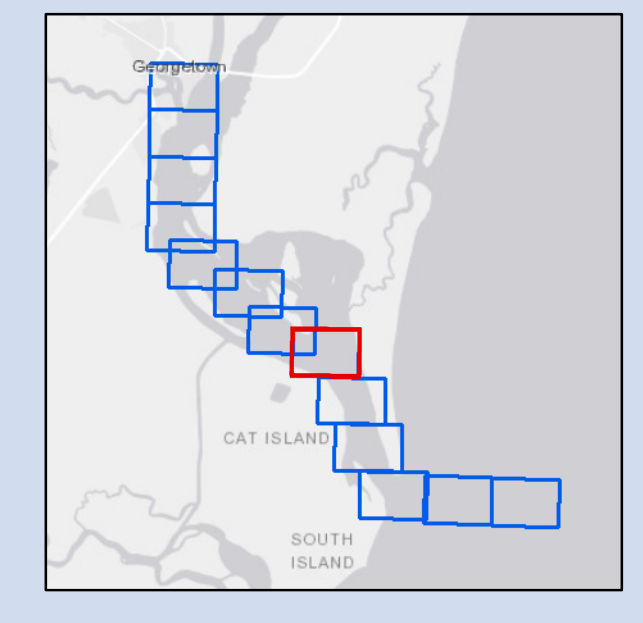
Projection
NAD 1983 StatePlane South Carolina FIPS 3200 Feet

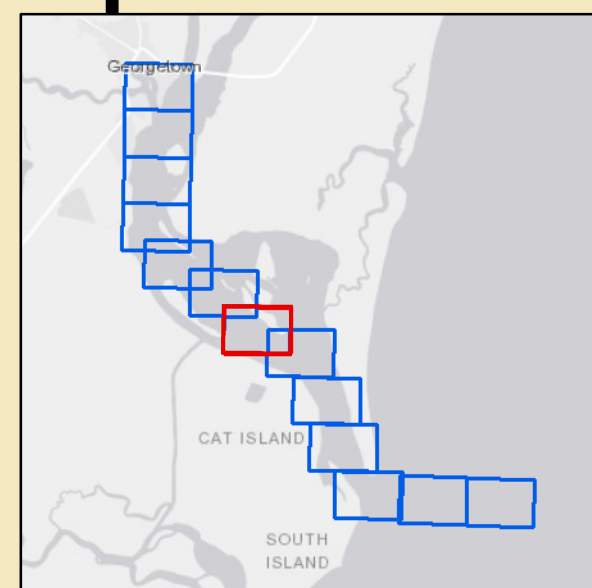
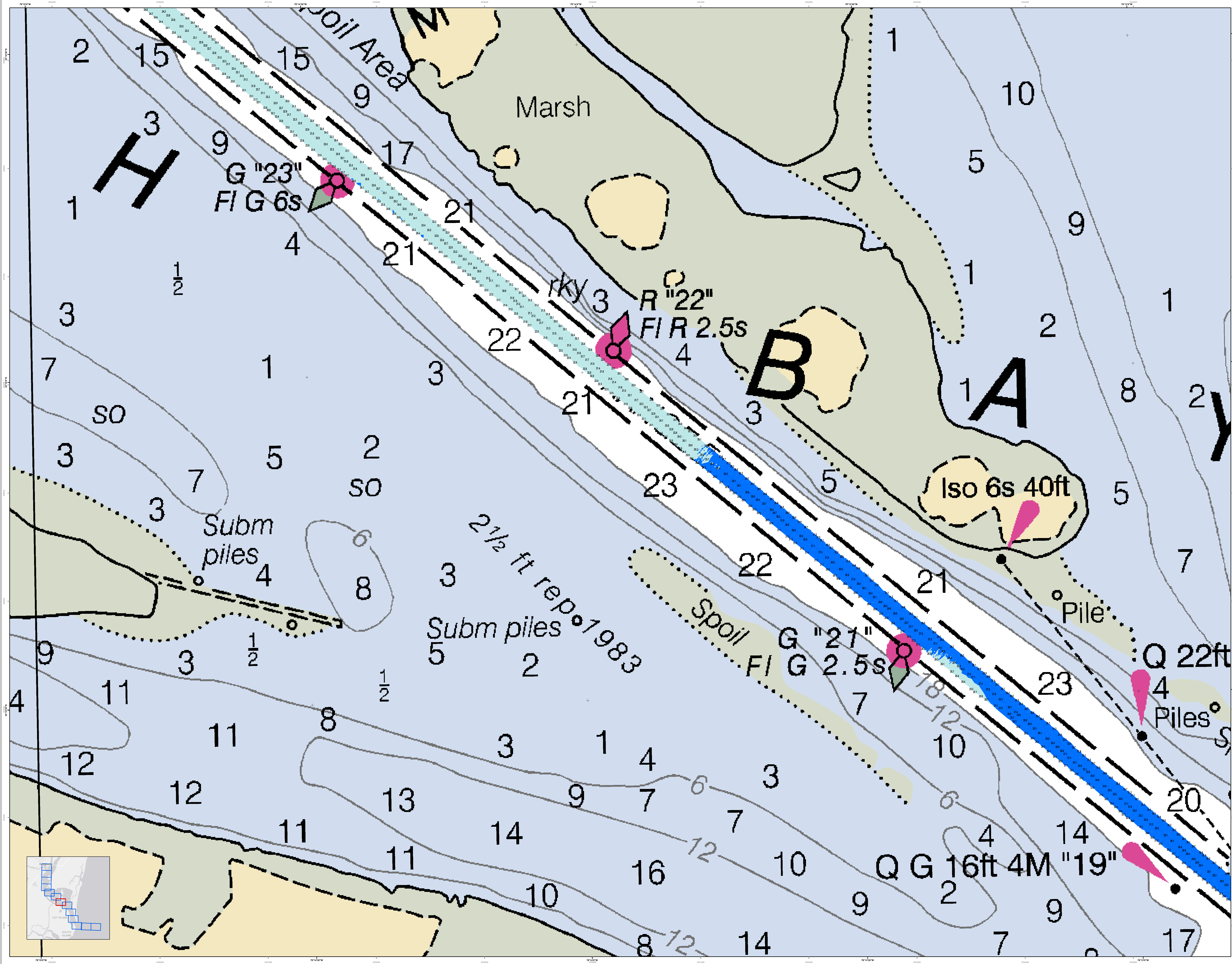
Metadata

Designed By:	U.S. Army Corps of Engineers	Production Date:	03 JUNE 2022
Reviewed By:	Charleston District	Survey Date:	16 JUNE 2022
Scale:	1:25,000	Project Reference Number:	16JUN22001D
Revision:	1	Survey Status:	CONDITION
Author:	Charleston District	Project:	Georgetown Harbor Channel Survey
Editor:	Charleston District	Sheet:	C001

Sheet Reference Number
C001

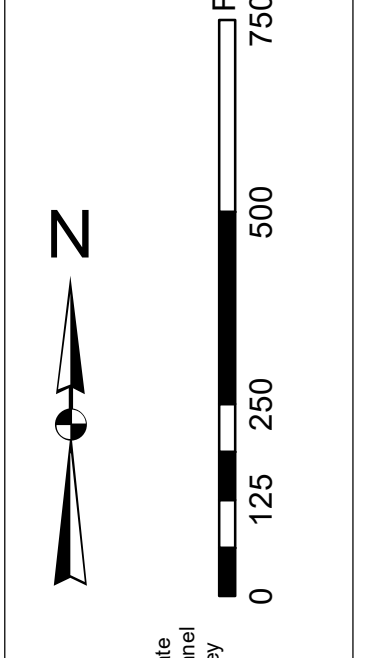
Sheet 6 of 13



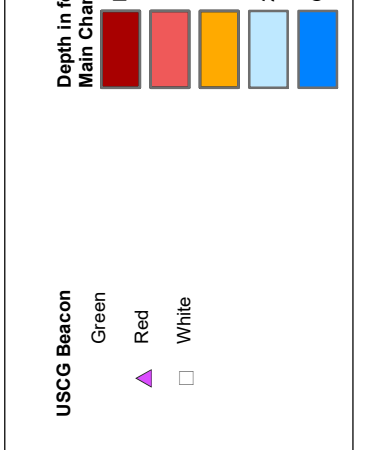


In its capacity as U.S. Army Corps of Engineers, Charleston District Office, Special District for the Port of Georgetown, South Carolina, has prepared this chart. The information on this chart is based on the best available information and is not a guarantee of accuracy. Users of this chart should be aware that there are no warranties, express or implied, made by the Corps of Engineers for the use of this chart. Users are encouraged to use all prudent safety practices.

Production Notes:
1. This chart is a reproduction of the original chart.
2. All data were derived from the original chart.
3. Changes are indicated by the appropriate symbols.
4. All data are in feet and meters.
5. All data are based on the mean low water datum.



Graphic Control Note:
1. The graphic control note is a reproduction of the original chart.
2. All data were derived from the original chart.
3. Changes are indicated by the appropriate symbols.
4. All data are in feet and meters.
5. All data are based on the mean low water datum.



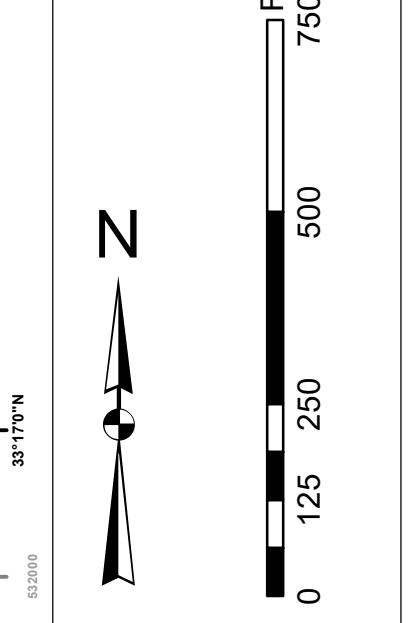
Symbol	Description
(Pink symbol)	G "23" Fl G 6s
(Pink symbol)	R "22" Fl R 2.5s
(Pink symbol)	G "21" Fl G 2.5s
(Pink symbol)	Q G 16ft 4M "19"
(Dotted line)	Subm piles
(Dashed line)	Iso 6s 40ft
(Dotted line)	Spoil Area
(Yellow area)	Marsh

Designed By:	U.S. Army Corps of Engineers	Production Date:	03 JUNE 2022
Reviewed By:	U.S. Army Corps of Engineers	Project Reference Number:	16JUN22
Scale:	1 inch = 255 feet	Chart Number:	16JUN22
Projection:	NAD 1983 StatePlane South Carolina FIPS 3800 Feet	Chart Title:	Georgetown Harbor Channel
Author:	CESAC-GIS@USACE.ARMY.MIL	Chart Status:	CONDITION

Georgetown Harbor Channel Survey
The information depicted on this map represents the results of surveys made on the dates indicated and can only be considered as indicating the general location of the structures. It is not a guarantee of accuracy. The information on this chart is based on the best available information and is not a guarantee of accuracy. Users of this chart should be aware that there are no warranties, express or implied, made by the Corps of Engineers for the use of this chart. Users are encouraged to use all prudent safety practices.

In its capacity as the U.S. Army Corps of Engineers, Charleston District Office, Special Data Branch has made this chart, including the information on this chart, available to the public. This information is provided for informational purposes only and does not constitute a warranty of any kind. The user assumes all liability for any use of this information. The user agrees to indemnify and hold the U.S. Army Corps of Engineers, Charleston District Office, harmless from and against all claims, damages, and expenses, including reasonable attorneys' fees, that may be asserted against or incurred by the U.S. Army Corps of Engineers, Charleston District Office, in connection with the use of this information. The user agrees to release the U.S. Army Corps of Engineers, Charleston District Office, from all liability for any use of this information.

Projection Note:
1. This chart is a projection of the geoid height data from the National Geodetic Survey (NGS) and is not a true representation of the earth's surface.
2. The chart is based on the North American Datum of 1983 (NAD 83).
3. The chart is based on the datum of the survey data used to create the chart.
4. The chart is based on the datum of the survey data used to create the chart.



Hydrographic Note:
1. The depth of the water is shown in fathoms (ft) and meters (m).
2. The depth of the water is shown in fathoms (ft) and meters (m).
3. The depth of the water is shown in fathoms (ft) and meters (m).
4. The depth of the water is shown in fathoms (ft) and meters (m).

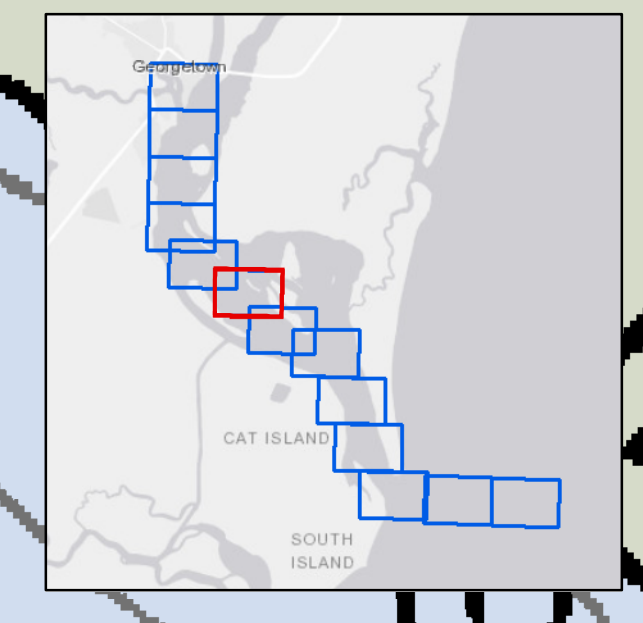
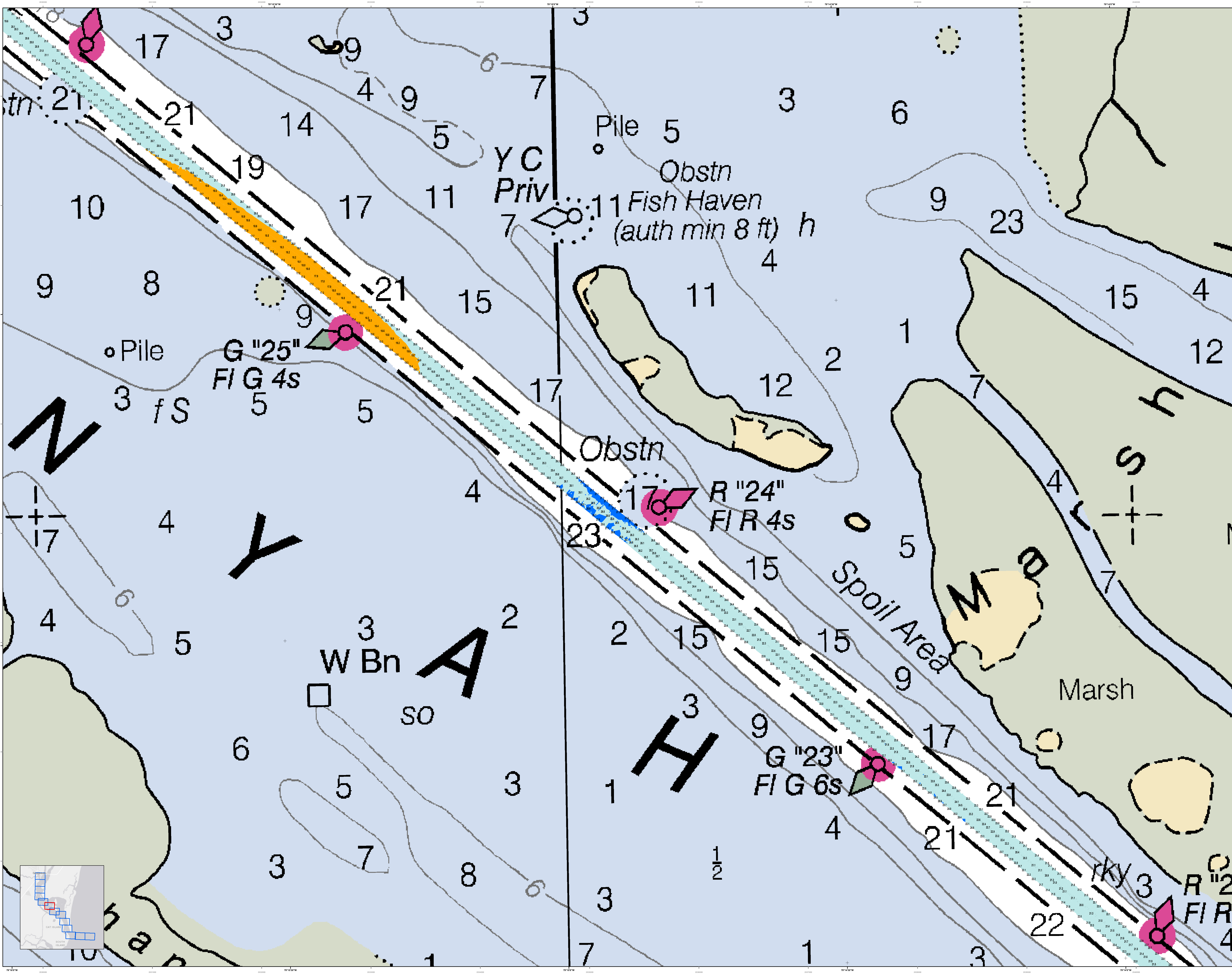
Legend

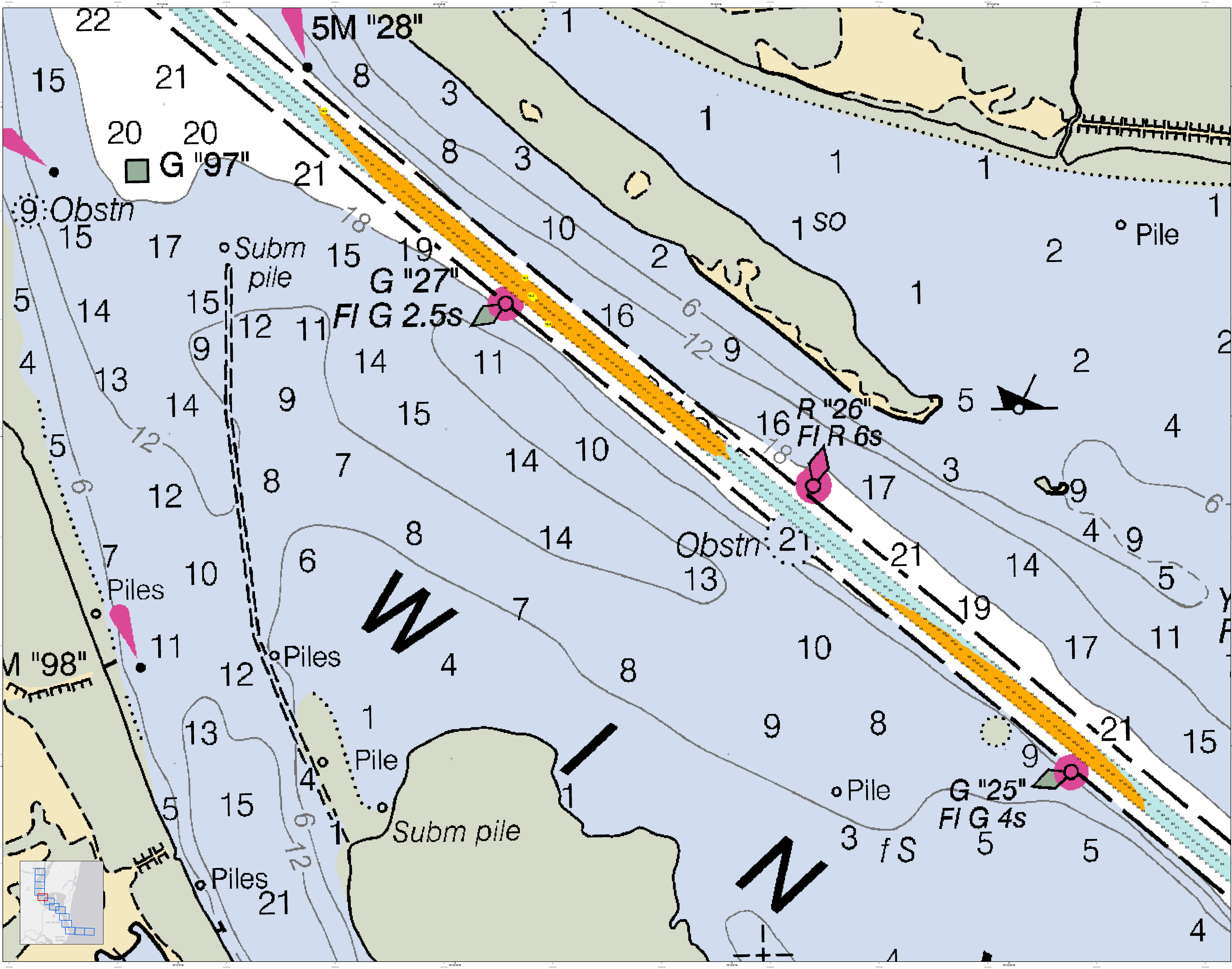
- Soundings:**
 - 10 to 15: Yellow
 - 16 to 20: Orange
 - 21 to 25: Red
 - 26 to 30: Blue
 - 31 to 35: Green
 - 36 to 40: Purple
 - 41 to 45: Brown
 - 46 to 50: Grey
- Obstructions:**
 - Red circle with cross: Obstruction
 - Red circle with dot: Obstruction
 - Red circle with cross: Obstruction
 - Red circle with dot: Obstruction
- Other Symbols:**
 - Black circle: Pile
 - Black square: W Bn
 - Black triangle: R "24"
 - Black circle with cross: G "23"
 - Black circle with cross: G "25"

U.S. Army Corps of Engineers Charleston District Office Special Data Branch Charleston, SC 29405	Designed By: Hydro Software v3.82	Survey Date: 03 JUNE 2022	Production Date: 16 JUNE 2022
Reviewed By: 1:5000	Scale: 1 inch = 255 feet	Project Reference Number: PC00010	Project Reference Number: PC00010
Scale: 1 inch = 255 feet	Scale: 1 inch = 255 feet	Scale: 1 inch = 255 feet	Scale: 1 inch = 255 feet
Scale: 1 inch = 255 feet	Scale: 1 inch = 255 feet	Scale: 1 inch = 255 feet	Scale: 1 inch = 255 feet

Georgetown Harbor Channel Survey
The information depicted on this map represents the results of surveys made on the dates indicated and can only be considered as indicating the general character of the bottom. It is not intended to be used for navigation. It is not intended to be used for navigation. It is not intended to be used for navigation.

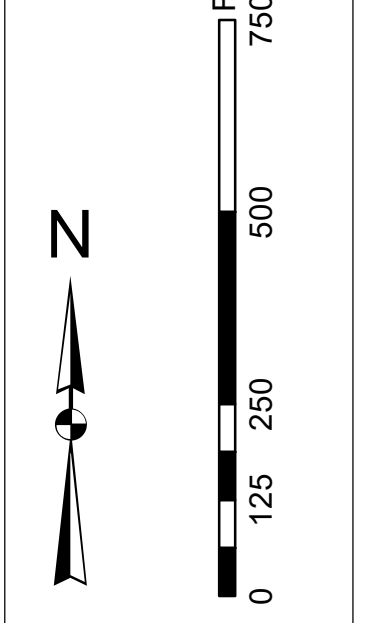
Concluded on: 03 JUNE 2022
Georgetown, South Carolina





In its capacity, the U.S. Army Corps of Engineers, Charleston District Office, Special Data Branch has made this chart, including the information on this chart, available for use by the public. The information on this chart is for informational purposes only and does not constitute a warranty of any kind. The user assumes all liability for any use of this information. The information on this chart is not to be used for navigation.

Projection Note:
This chart is projected using the North Carolina State Plane (NAD 83) projection. The datum is North American Datum of 1983 (NAD 83). The chart is projected using the NAD 83 datum. The chart is projected using the NAD 83 datum.



Depth Soundings:
1. In fathoms
2. In meters
3. In feet

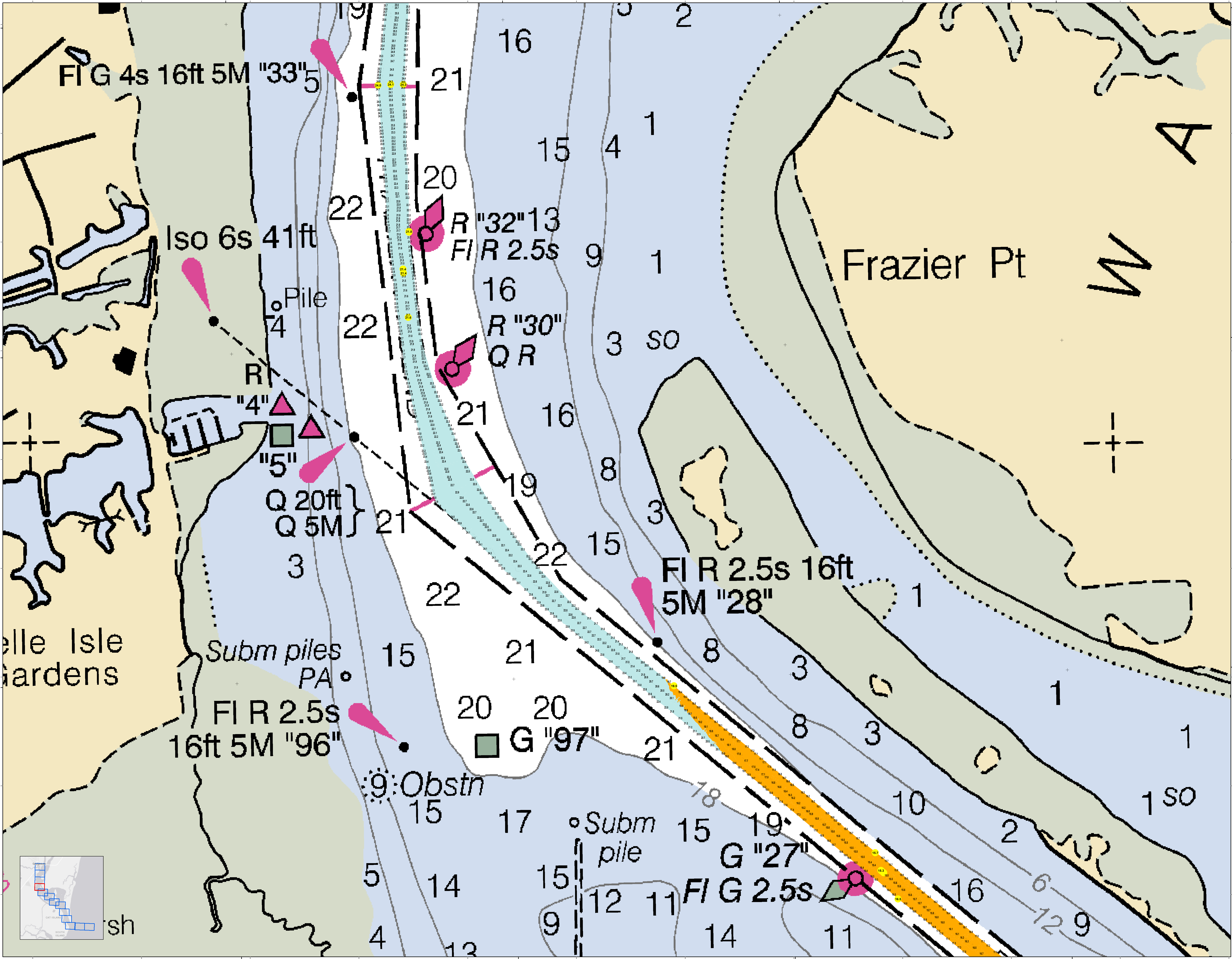
Obstruction:
1. Obstruction
2. Obstruction
3. Obstruction

Legend:
1. Obstruction
2. Obstruction
3. Obstruction

Designed By:	Survey Date:	Production Date:
Hydro Software v3.02	03 JUNE 2022	16 JUNE 2022
Reviewed By:	Project Reference Number:	
T. S. S. S.	PC00010	
Scale:	Scale:	Scale:
1 inch = 200 feet	1 inch = 200 feet	1 inch = 200 feet
Projection:	Projection:	Projection:
NAD 83 StatePlane South Carolina FIPS 3800 Feet	NAD 83 StatePlane South Carolina FIPS 3800 Feet	NAD 83 StatePlane South Carolina FIPS 3800 Feet

U.S. ARMY CORPS OF ENGINEERS
CHARLESTON DISTRICT OFFICE
SPECIAL DATA BRANCH
CHARLESTON, SOUTH CAROLINA

Georgetown Harbor Channel Survey
The information depicted on this map represents the results of surveys made on the dates indicated and can only be considered as indicating the general location of the objects shown. It is not to be used for navigation.
Conducted on: 03 JUNE 2022
Georgetown, South Carolina



U.S. Army Corps of Engineers
Charleston District

Georgetown Harbor Channel Survey
The information depicted on this map represents the results of surveys made on the dates indicated and can only be considered as indicating the general location of objects. It is not to be used for navigation.

Produced on: **03 JUNE 2022**
Georgetown, South Carolina

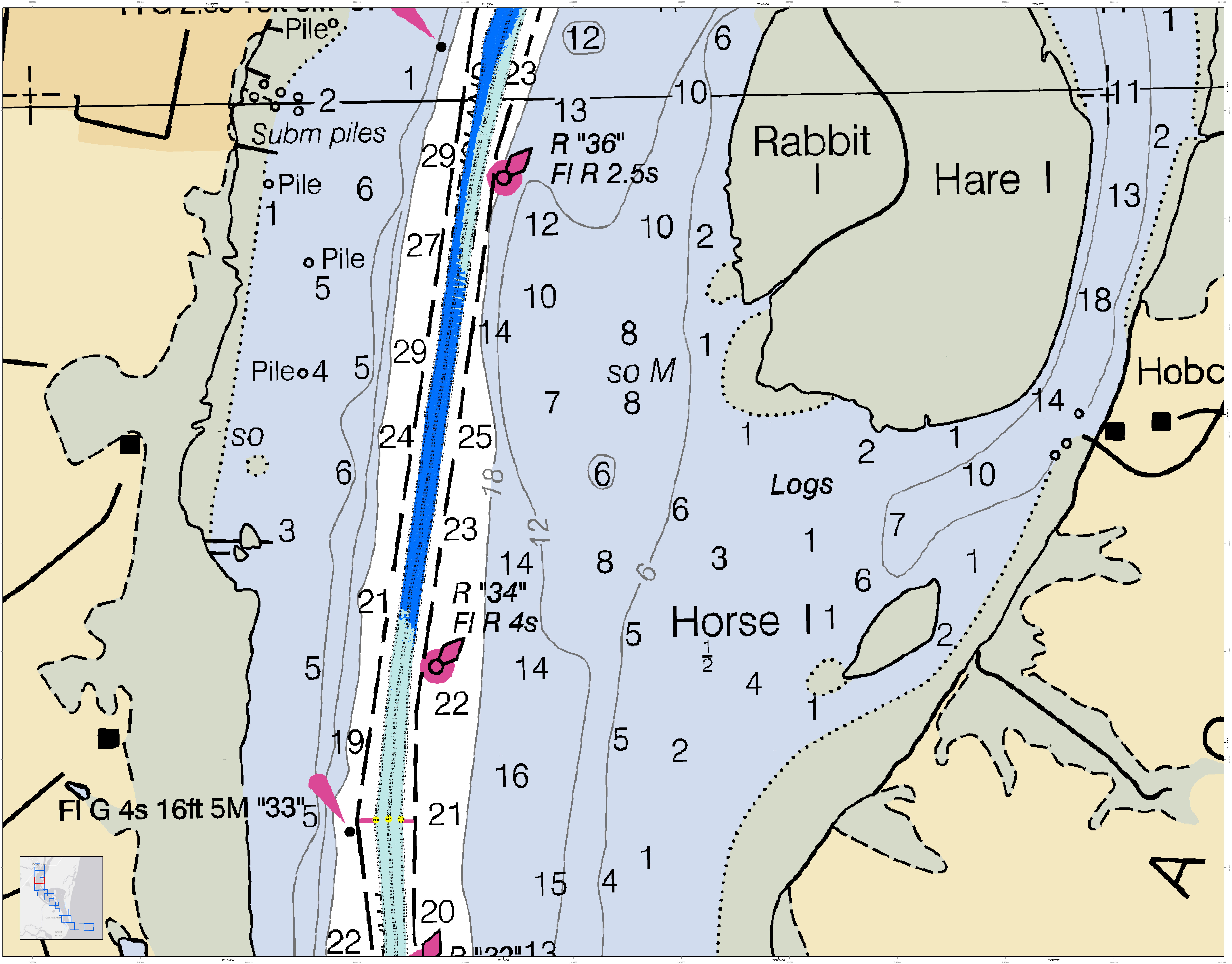
Designed By: U.S. Army Corps of Engineers, District Office, Charleston, South Carolina	Production Date: 03 JUNE 2022
Reviewed By: U.S. Army Corps of Engineers, District Office, Charleston, South Carolina	Project Reference Number: 150303
Scale: 1 inch = 235 feet	Survey Station: 150303
Projection: NAD 1983 StatePlane South Carolina FIPS 3800 Feet	Condition: CONDITION

Legend

- Depth Contours: 1, 2, 3, 4, 5, 8, 9, 10, 11, 12, 13, 14, 15, 16, 17, 18, 19, 20, 21, 22
- Obstructions: Obstrn
- Subm piles: Subm pile
- Navigation Aids: FI G 4s 16ft 5M "33"5, R "32"13, R "30" QR, FI R 2.5s 16ft 5M "28", G "97", G "27", FI G 2.5s
- Other: Iso 6s 41ft, Pile, "4", "5", Q 20ft, Q 5M, Subm piles PA, "96"

Scale
0 125 250 500 750 Feet

North Arrow



U.S. Army Corps of Engineers
Charleston District

Production Notes:
 1. This is a hydrographic chart for navigation purposes only.
 2. The information on this chart is derived from the most recent available data.
 3. Users are encouraged to use all prudent safety practices.

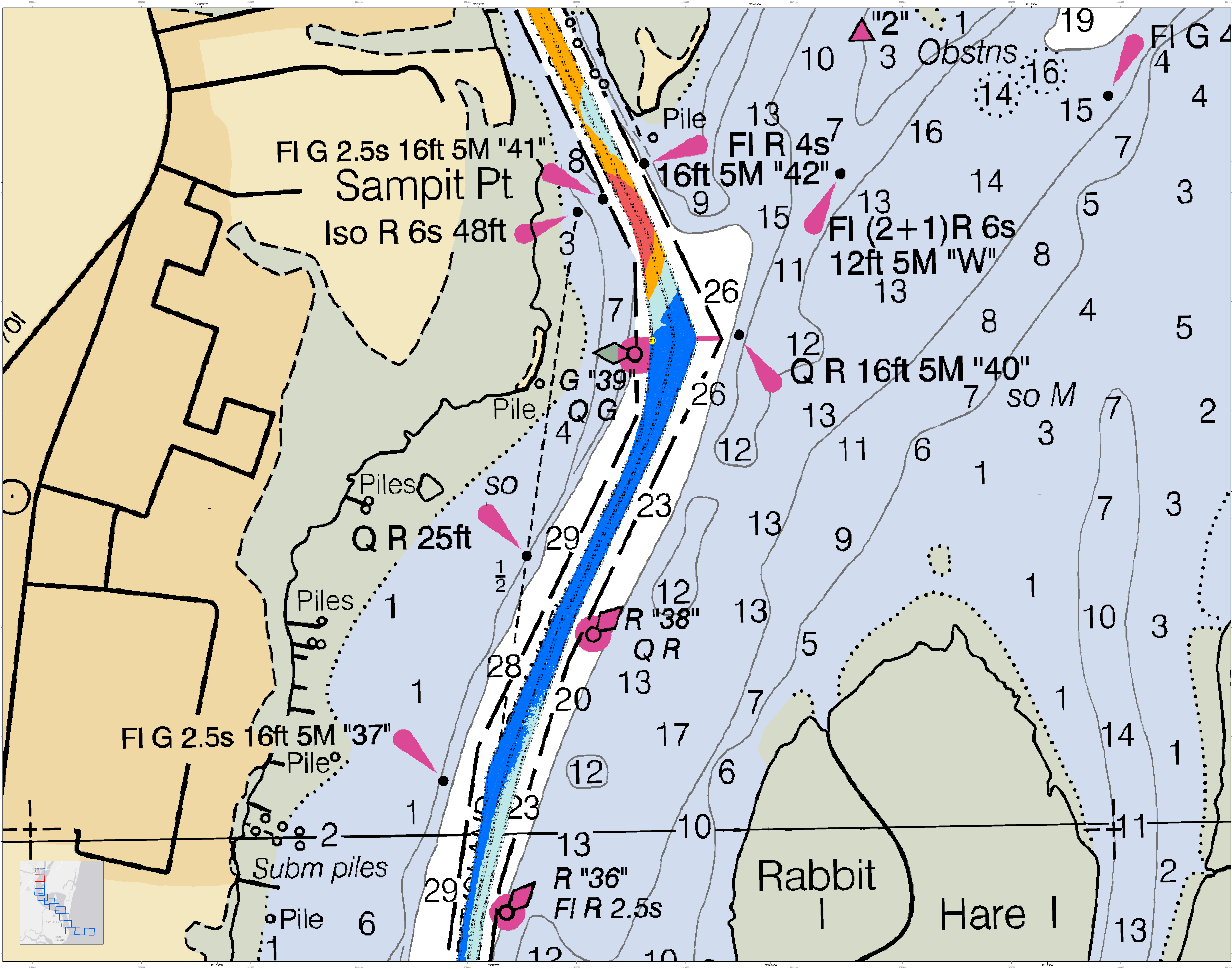
Scale:
 1 inch = 255 feet

Legend:
 - Subm piles
 - Pile
 - SO M
 - Logs
 - Horse I
 - Rabbit I
 - Hare I
 - Hobc

Designed By:	Survey Date:	Production Date:
Reviewed By:	03 JUNE 2022	16 JUNE 2022
Scale:	1:50,000	1:50,000
Projection:	NAD 1983 StatePlane South Carolina FIPS 3800 Feet	

Georgetown Harbor Channel Survey
 The information depicted on this map represents the results of surveys made on the dates indicated and can only be considered as indicating the general condition of the channel.
 Conducted on: 03 JUNE 2022
 Georgetown, South Carolina

SHEET REFERENCE NUMBER
 C001
 SHEET 11 OF 13



U.S. Army Corps of Engineers
Charleston District

Georgetown Harbor Channel Survey
The information depicted on this map represents the results of surveys made on the dates indicated and can only be considered as indicating the general location of obstructions. It is not intended to be used for navigation. Obstructions are shown as they were surveyed. Obstructions are shown as they were surveyed. Obstructions are shown as they were surveyed.

Production Date: 03 JUNE 2022 16 JUNE 2022
Project Reference Number: 1303D
Survey Station: PC0001D
Survey State: CONDITION

Designed By: elhydro Software v3.82
Reviewed By: 1303D
Scale: 1 inch = 255 feet
Projection: NAD 1983 StatePlane South Carolina FIPS 3800 Feet

U.S. Army Corps of Engineers
CHARLESTON DISTRICT
SOUTH CAROLINA
SARASOTA BRANCH
BIA/HAC/OD/AVE
CHARLESTON, SC 29403
CESAC-GIS@USACE.ARMY.MIL

Georgetown, South Carolina
Concluded on: 03 JUNE 2022

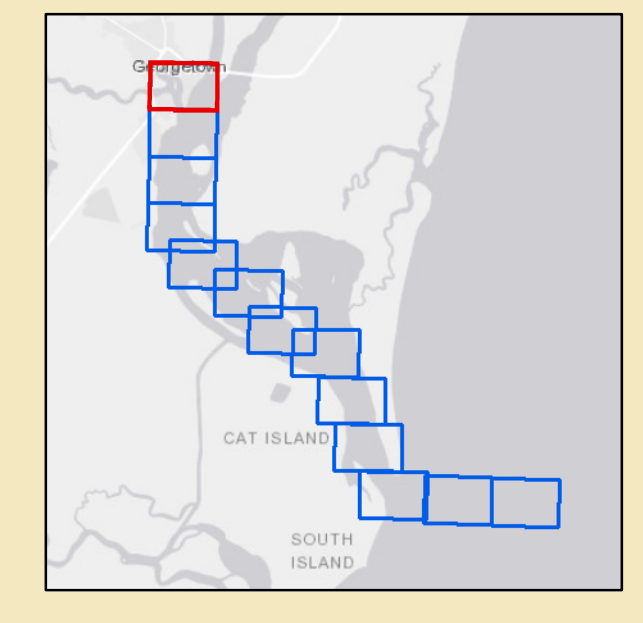
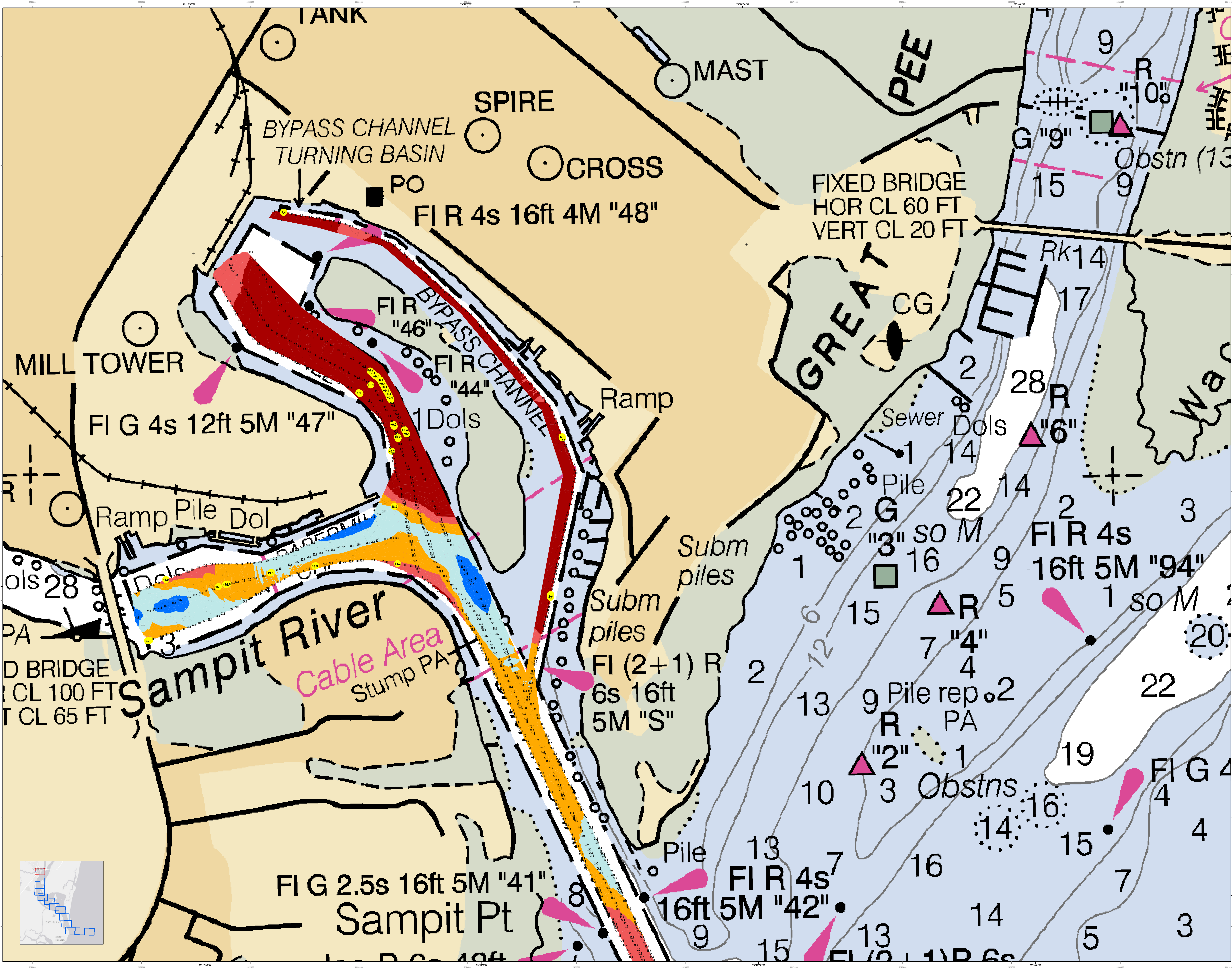
SHEET REFERENCE NUMBER
C001
SHEET 12 OF 13

Legend:
 - **Obstructions:** Pile, Iso R, FI R, Q R, FI G, G, SO M, Subm piles, Rabbit I, Hare I
 - **Depth Soundings:** 1, 2, 3, 4, 5, 6, 7, 8, 9, 10, 11, 12, 13, 14, 15, 16, 17, 18, 19, 20, 21, 22, 23, 24, 25, 26, 27, 28, 29, 30
 - **Channel:** Blue shaded area
 - **Obstacles:** Pink teardrop shapes
 - **Other:** Dashed lines, solid lines, circles, squares, triangles

Scale: 0 125 250 500 750 Feet

North Arrow: N

Disclaimer: This chart is not intended to be used for navigation. Obstructions are shown as they were surveyed. Obstructions are shown as they were surveyed. Obstructions are shown as they were surveyed.



U.S. Army Corps of Engineers
Charleston District

Production Date: 03 JUNE 2022
 Survey Date: 03 JUNE 2022
 Project Reference Number: 15000
 Survey Station: 15000
 Scale: 1 inch = 255 feet
 Projection: NAD 1983 StatePlane South Carolina FIPS 3800 Feet

Georgetown Harbor Channel Survey
 The information depicted on this map represents the results of surveys made on the dates indicated and can only be considered as indicating the general location of features. It is not intended to be used for navigation.
 Concluded on: 03 JUNE 2022
 Georgetown, South Carolina

SHEET REFERENCE NUMBER: C001
 SHEET 13 OF 13