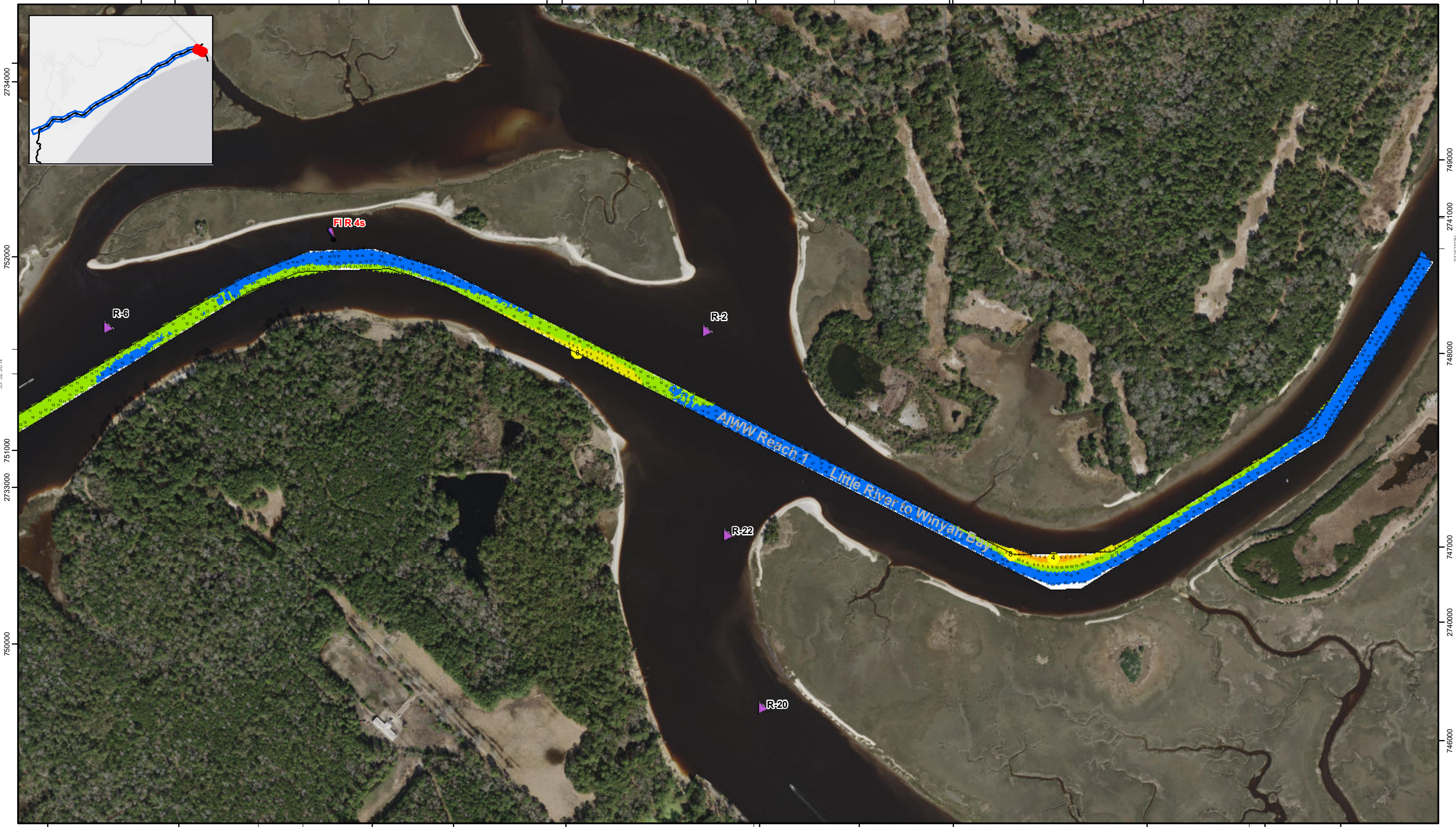
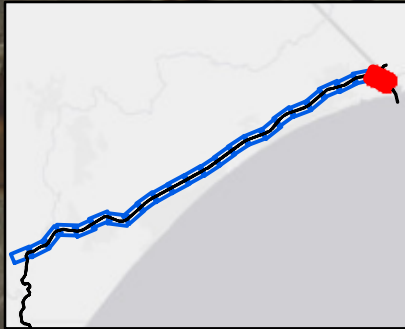


753000 2735000 78°34'30"W 2736000 2737000 33°52'30"N 2738000 78°34'0"W 2739000 2740000 78°33'30"W 2741000



749000 2733000 78°35'0"W 33°52'0"N 2734000 748000 2735000 78°34'30"W 2736000 747000 2737000 2738000 746000 2739000 78°34'0"W

**Atlantic Intercoastal Waterway (AIWW) Channel Survey**  
 The information depicted on this map represents the results of surveys made on the dates indicated and can only be considered as indicating the general conditions existing at that time.  
 Concluded on: **16 JAN 2020**  
 Little River, SC to Bucksport, SC

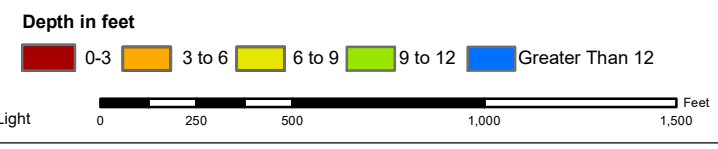
U.S. ARMY ENGINEER DISTRICT CORPS OF ENGINEERS CHARLESTON, SOUTH CAROLINA	Designed By: <b>eHydro Software v3.82</b>	Survey Date: <b>16 JAN 2020</b>	Production Date: <b>24 JAN 2020</b>
SPATIAL DATA BRANCH 69A HAGOOD AVE CHARLESTON, SC 29403 CESAC-GIS@USACE.ARMY.MIL	Reviewed By: <b>CCW</b>	Absolute Scale: <b>1:6,000</b>	Project Reference Number: <b>CESAC-PRA-0001</b>
	Reference Scale: <b>1 inch = 500 feet</b>	Survey Type: <b>CONDITION</b>	
	Projection: <b>NAD 1983 StatePlane South Carolina FIPS 3900 Feet</b>		

**Shoalest Sounding**  
 ● Sounding  
 Sounding may cover several point areas and is calculated per reach quarter area  
 \*+ indicates sounding above MLLW

**USCG Beacon**  
 ■ Green  
 ▲ Red

**USCG Buoy**  
 ● Green  
 ● Red  
 ● Coast Guard Racon

○ White  
 ● Yellow  
 ● USCG Light



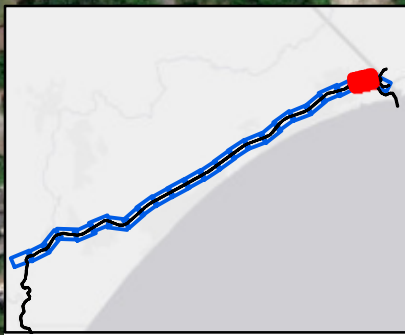
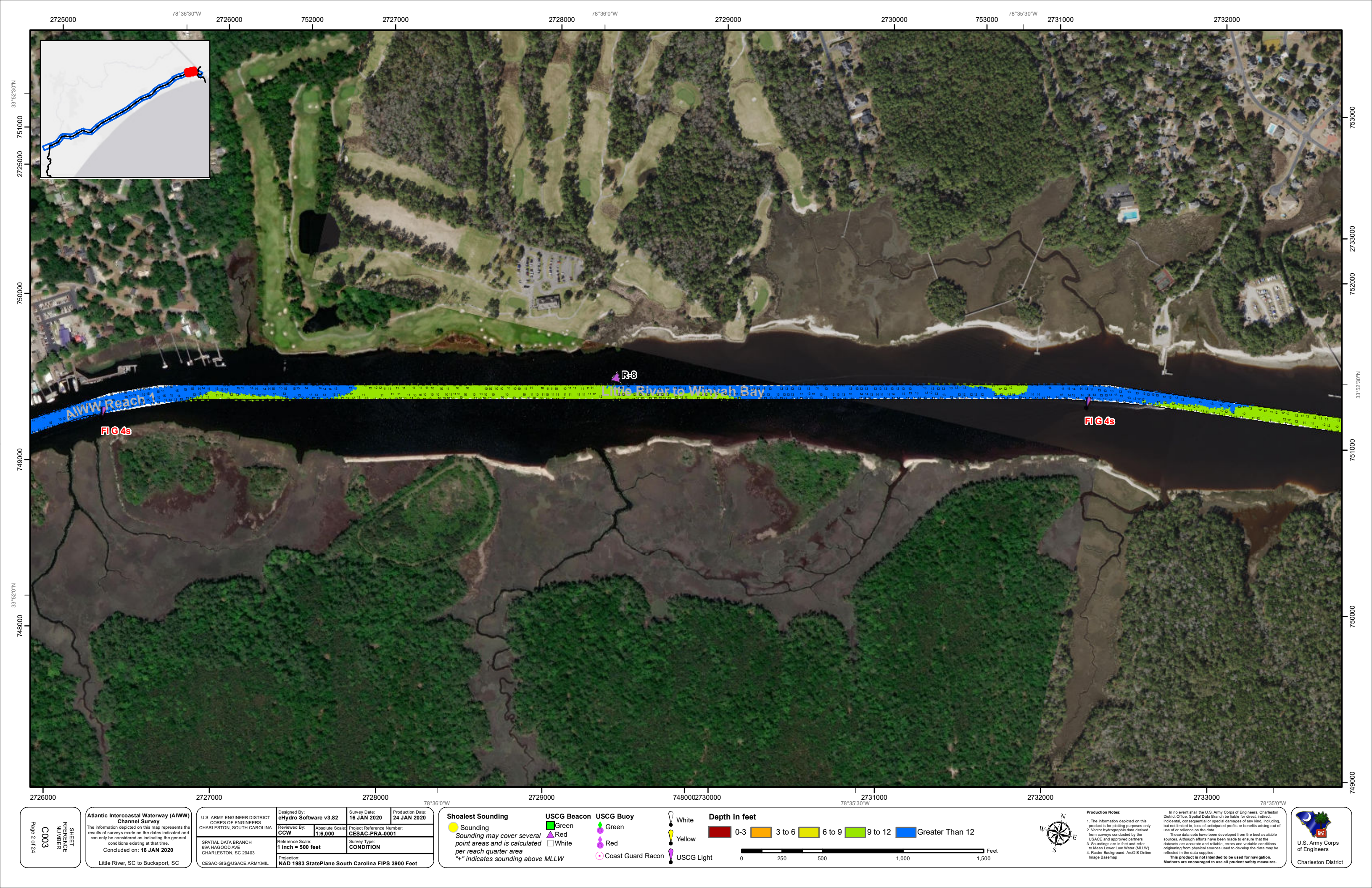
**Production Notes:**

- The information depicted on this product is for plotting purposes only.
- Vector hydrographic data derived from surveys conducted by the USACE and approved partners.
- Soundings are in feet and refer to Mean Lower Low Water (MLLW).
- Raster Background: ArcGIS Online Image Basemap.

In no event shall the U.S. Army Corps of Engineers, Charleston District Office, Spatial Data Branch be liable for direct, indirect, incidental, consequential or special damages of any kind, including, but not limited to, loss of anticipated profits or benefits arising out of use of or reliance on the data.  
 These data sets have been developed from the best available sources. Although efforts have been made to ensure that the datasets are accurate and reliable, errors and variable conditions originating from physical sources used to develop the data may be reflected in the data supplied.  
 This product is not intended to be used for navigation.  
 Mariners are encouraged to use all prudent safety measures.



SHEET REFERENCE NUMBER  
**C003**  
 Page 1 of 24



R-8

AIWW Reach

Little River to Winyah Bay

FIG 4s

FIG 4s

SHEET  
REFERENCE  
NUMBER  
C003  
Page 2 of 24

**Atlantic Intercoastal Waterway (AIWW)  
Channel Survey**  
The information depicted on this map represents the  
results of surveys made on the dates indicated and  
can only be considered as indicating the general  
conditions existing at that time.  
Concluded on: **16 JAN 2020**  
Little River, SC to Bucksport, SC

U.S. ARMY ENGINEER DISTRICT  
CORPS OF ENGINEERS  
CHARLESTON, SOUTH CAROLINA  
SPATIAL DATA BRANCH  
69A HAGOOD AVE  
CHARLESTON, SC 29403  
CESAC-GIS@USACE.ARMY.MIL

Designed By: <b>eHydro Software v3.82</b>	Survey Date: <b>16 JAN 2020</b>	Production Date: <b>24 JAN 2020</b>
Reviewed By: <b>CCW</b>	Absolute Scale: <b>1:6,000</b>	Project Reference Number: <b>CESAC-PRA-0001</b>
Reference Scale: <b>1 inch = 500 feet</b>	Survey Type: <b>CONDITION</b>	
Projection: <b>NAD 1983 StatePlane South Carolina FIPS 3900 Feet</b>		

**Shoalest Sounding**  
Sounding  
Sounding may cover several  
point areas and is calculated  
per reach quarter area  
"±" indicates sounding above MLLW

**USCG Beacon**  
Green  
Red  
White

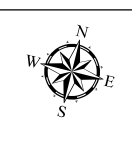
**USCG Buoy**  
Green  
Red  
Coast Guard Racon

White  
Yellow  
USCG Light

**Depth in feet**

0-3    3 to 6    6 to 9    9 to 12    Greater Than 12

0    250    500    1,000    1,500 Feet



**Production Notes:**  
1. The information depicted on this  
product is for plotting purposes only  
2. Vector hydrographic data derived  
from surveys conducted by the  
USACE and approved partners  
3. Soundings are in feet and refer  
to Mean Lower Low Water (MLLW)  
4. Raster Background: ArcGIS Online  
Image Basemap  
This product is not intended to be used for navigation.  
Mariners are encouraged to use all prudent safety measures.

In no event shall the U.S. Army Corps of Engineers, Charleston  
District Office, Spatial Data Branch be liable for direct, indirect,  
incidental, consequential or special damages of any kind, including,  
but not limited to, loss of anticipated profits or benefits arising out of  
use of or reliance on the data.  
These data sets have been developed from the best available  
sources. Although efforts have been made to ensure that the  
datasets are accurate and reliable, errors and variable conditions  
originating from physical sources used to develop the data may be  
reflected in the data supplied.



2718000 78°38'0"W 748000 2719000 2720000 749000 78°37'30"W 2721000 2722000 750000 2723000 78°37'0"W 2724000 751000



33°51'30"N  
78°38'0"W  
745000

2719000

2720000 2721000 78°37'30"W 2722000 2723000 33°51'30"N 78°37'0"W 2724000 746000 725000 78°36'30"W 2726000

SHEET  
REFERENCE  
NUMBER  
C003  
Page 9 of 24

**Atlantic Intercoastal Waterway (AIWW)  
Channel Survey**  
The information depicted on this map represents the results of surveys made on the dates indicated and can only be considered as indicating the general conditions existing at that time.  
Concluded on: **16 JAN 2020**  
Little River, SC to Bucksport, SC

U.S. ARMY ENGINEER DISTRICT  
CORPS OF ENGINEERS  
CHARLESTON, SOUTH CAROLINA  
SPATIAL DATA BRANCH  
69A HAGOOD AVE  
CHARLESTON, SC 29403  
CESAC-GIS@USACE.ARMY.MIL

Designed By:  
**eHydro Software v3.8.2**  
Reviewed By:  
**CCW**  
Reference Scale:  
**1 inch = 500 feet**  
Projection:  
**NAD 1983 StatePlane South Carolina FIPS 3900 Feet**

Survey Date:  
**16 JAN 2020**  
Production Date:  
**24 JAN 2020**  
Project Reference Number:  
**CESAC-PRA-0001**  
Survey Type:  
**CONDITION**

**Shoalest Sounding**  
● Sounding  
Sounding may cover several point areas and is calculated per reach quarter area  
\*+ indicates sounding above MLLW

**USCG Beacon**  
■ Green  
▲ Red  
□ White

**USCG Buoy**  
● Green  
● Red  
● Coast Guard Racon

**USCG Light**  
● White  
● Yellow

**Depth in feet**  
■ 0-3 ■ 3 to 6 ■ 6 to 9 ■ 9 to 12 ■ Greater Than 12  
0 250 500 1,000 1,500 Feet



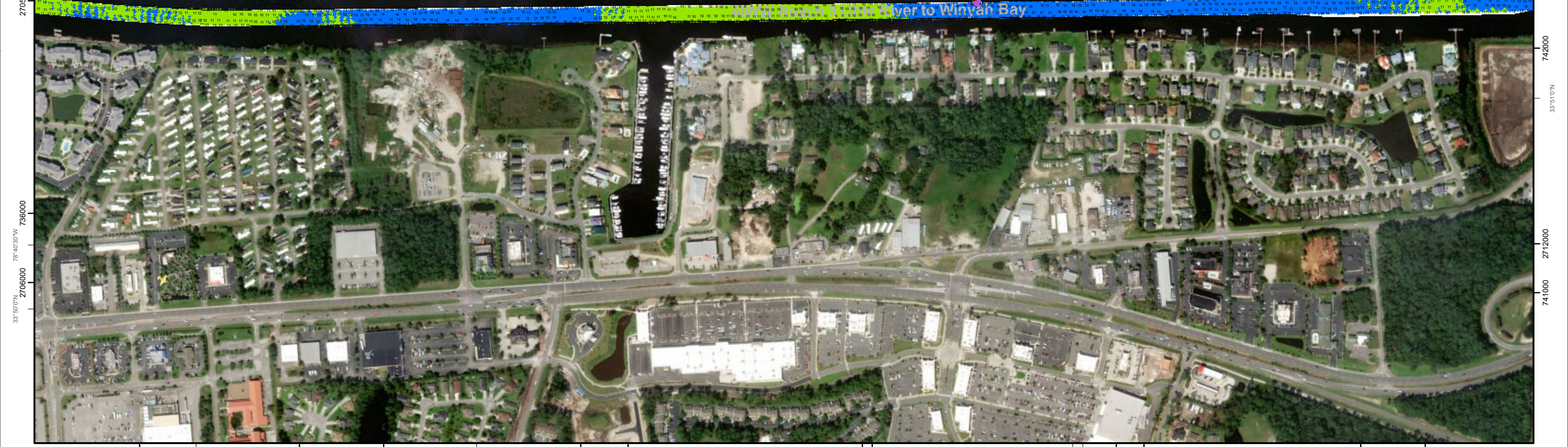
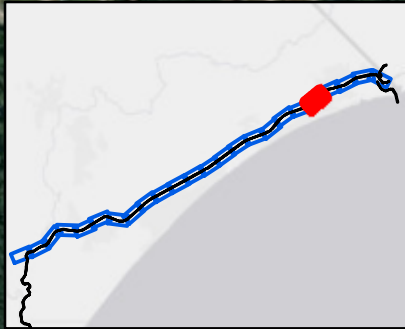
**Production Notes:**  
1. The information depicted on this product is for plotting purposes only.  
2. Vector hydrographic data derived from surveys conducted by the USACE and approved partners.  
3. Soundings are in feet and refer to Mean Lower Low Water (MLLW).  
4. Raster Background: ArcGIS Online Image Basemap.

In no event shall the U.S. Army Corps of Engineers, Charleston District Office, Spatial Data Branch be liable for direct, indirect, incidental, consequential or special damages of any kind, including, but not limited to, loss of anticipated profits or benefits arising out of use of or reliance on the data.  
These data sets have been developed from the best available sources. Although efforts have been made to ensure that the datasets are accurate and reliable, errors and variable conditions originating from physical sources used to develop the data may be reflected in the data supplied.  
This product is not intended to be used for navigation.  
Mariners are encouraged to use all prudent safety measures.





2704000 2705000 2706000 2707000 2708000 2709000 2710000 2711000 2712000 2713000 2714000 2715000 2716000 2717000 2718000 2719000 2720000 2721000 2722000 2723000 2724000 2725000 2726000 2727000 2728000 2729000 2730000 2731000 2732000 2733000 2734000 2735000 2736000 2737000 2738000 2739000 2740000 2741000 2742000 2743000 2744000 2745000 2746000 2747000 2748000 2749000 2750000



2707000 2708000 2709000 2710000 2711000 2712000 2713000 2714000 2715000 2716000 2717000 2718000 2719000 2720000 2721000 2722000 2723000 2724000 2725000 2726000 2727000 2728000 2729000 2730000 2731000 2732000 2733000 2734000 2735000 2736000 2737000 2738000 2739000 2740000 2741000 2742000 2743000 2744000 2745000 2746000 2747000 2748000 2749000 2750000

SHEET  
REFERENCE  
NUMBER  
C003  
Page 5 of 24

**Atlantic Intercoastal Waterway (AIWW)  
Channel Survey**  
The information depicted on this map represents the results of surveys made on the dates indicated and can only be considered as indicating the general conditions existing at that time.  
Concluded on: **16 JAN 2020**  
Little River, SC to Bucksport, SC

U.S. ARMY ENGINEER DISTRICT  
CORPS OF ENGINEERS  
CHARLESTON, SOUTH CAROLINA  
SPATIAL DATA BRANCH  
69A HAGOOD AVE  
CHARLESTON, SC 29403  
CESAC-GIS@USACE.ARMY.MIL

Designed By: **eHydro Software v3.82**  
Reviewed By: **CCW**  
Reference Scale: **1 inch = 500 feet**  
Projection: **NAD 1983 StatePlane South Carolina FIPS 3900 Feet**

Survey Date: **16 JAN 2020**  
Production Date: **24 JAN 2020**  
Project Reference Number: **CESAC-PRA-0001**  
Survey Type: **CONDITION**

**Shoalest Sounding**  
Sounding  
Sounding may cover several point areas and is calculated per reach quarter area  
"±" indicates sounding above MLLW

**USCG Beacon**  
Green  
Red  
White

**USCG Buoy**  
Green  
Red  
Coast Guard Racon

**USCG Light**  
White  
Yellow

**Depth in feet**  
0-3  
3 to 6  
6 to 9  
9 to 12  
Greater Than 12

0 250 500 1,000 1,500 Feet

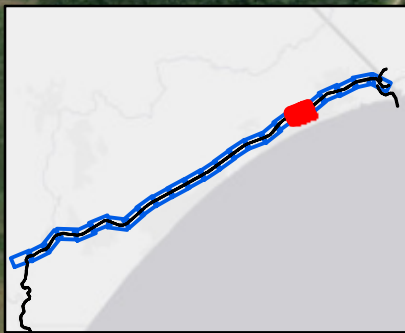


**Production Notes:**  
1. The information depicted on this product is for plotting purposes only.  
2. Vector hydrographic data derived from surveys conducted by the USACE and approved partners.  
3. Soundings are in feet and refer to Mean Lower Low Water (MLLW).  
4. Raster Background: ArcGIS Online Image Basemap.

In no event shall the U.S. Army Corps of Engineers, Charleston District Office, Spatial Data Branch be liable for direct, indirect, incidental, consequential or special damages of any kind, including, but not limited to, loss of anticipated profits or benefits arising out of use of or reliance on the data.  
These data sets have been developed from the best available sources. Although efforts have been made to ensure that the datasets are accurate and reliable, errors and variable conditions originating from physical sources used to develop the data may be reflected in the data supplied.  
This product is not intended to be used for navigation.  
Mariners are encouraged to use all prudent safety measures.



2697000 736000 2698000 78°42'0"W 2699000 737000 2700000 78°41'30"W 2701000 2702000 2703000 78°41'0"W 2704000



33°50'0"N  
2697000

734000

733000

2698000

732000

2699000

2700000

78°41'30"W

R-16

G-15A

W-G

G-15

33°50'30"N  
736000

735000

2699000

733000

2700000

2701000

78°41'0"W

**Atlantic Intercoastal Waterway (AIWW) Channel Survey**  
The information depicted on this map represents the results of surveys made on the dates indicated and can only be considered as indicating the general conditions existing at that time.  
Concluded on: **16 JAN 2020**  
Little River, SC to Bucksport, SC

U.S. ARMY ENGINEER DISTRICT  
CORPS OF ENGINEERS  
CHARLESTON, SOUTH CAROLINA  
SPATIAL DATA BRANCH  
69A HAGOOD AVE  
CHARLESTON, SC 29403  
CESAC-GIS@USACE.ARMY.MIL

Designed By: <b>eHydro Software v3.82</b>	Survey Date: <b>16 JAN 2020</b>	Production Date: <b>24 JAN 2020</b>
Reviewed By: <b>CCW</b>	Absolute Scale: <b>1:6,000</b>	Project Reference Number: <b>CESAC-PRA-0001</b>
Reference Scale: <b>1 inch = 500 feet</b>	Survey Type: <b>CONDITION</b>	
Projection: <b>NAD 1983 StatePlane South Carolina FIPS 3900 Feet</b>		

**Shoalest Sounding**  
Sounding may cover several point areas and is calculated per reach quarter area  
\*+ indicates sounding above MLLW

**USCG Beacon**  
Green  
Red

**USCG Buoy**  
Green  
Red  
Coast Guard Racon

**USCG Light**  
White  
Yellow

**Depth in feet**

0-3	3 to 6	6 to 9	9 to 12	Greater Than 12
-----	--------	--------	---------	-----------------

0 250 500 1,000 1,500 Feet



**Production Notes:**  
1. The information depicted on this product is for plotting purposes only.  
2. Vector hydrographic data derived from surveys conducted by the USACE and approved partners.  
3. Soundings are in feet and refer to Mean Lower Low Water (MLLW).  
4. Raster Background: ArcGIS Online Image Basemap.  
In no event shall the U.S. Army Corps of Engineers, Charleston District Office, Spatial Data Branch be liable for direct, indirect, incidental, consequential or special damages of any kind, including, but not limited to, loss of anticipated profits or benefits arising out of use of or reliance on the data.  
These data sets have been developed from the best available sources. Although efforts have been made to ensure that the datasets are accurate and reliable, errors and variable conditions originating from physical sources used to develop the data may be reflected in the data supplied.  
This product is not intended to be used for navigation.  
Mariners are encouraged to use all prudent safety measures.



SHEET REFERENCE NUMBER  
**C003**  
Page 6 of 24



SHEET  
REFERENCE  
NUMBER  
C003  
Page 7 of 24

**Atlantic Intercoastal Waterway (AIWW)  
Channel Survey**  
The information depicted on this map represents the  
results of surveys made on the dates indicated and  
can only be considered as indicating the general  
conditions existing at that time.  
Concluded on: **16 JAN 2020**  
Little River, SC to Bucksport, SC

U.S. ARMY ENGINEER DISTRICT  
CORPS OF ENGINEERS  
CHARLESTON, SOUTH CAROLINA  
SPATIAL DATA BRANCH  
69A HAGOOD AVE  
CHARLESTON, SC 29403  
CESAC-GIS@USACE.ARMY.MIL

Designed By: <b>eHydro Software v3.82</b>	Survey Date: <b>16 JAN 2020</b>	Production Date: <b>24 JAN 2020</b>
Reviewed By: <b>CCW</b>	Absolute Scale: <b>1:6,000</b>	Project Reference Number: <b>CESAC-PRA-0001</b>
Reference Scale: <b>1 inch = 500 feet</b>	Survey Type: <b>CONDITION</b>	
Projection: <b>NAD 1983 StatePlane South Carolina FIPS 3900 Feet</b>		

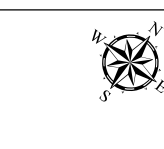
**Shoalest Sounding**  
● Sounding  
Sounding may cover several  
point areas and is calculated  
per reach quarter area  
"±" indicates sounding above MLLW

**USCG Beacon**  
■ Green  
▲ Red  
□ White

**USCG Buoy**  
● Green  
● Red  
● Coast Guard Racon

○ White  
○ Yellow  
○ USCG Light

**Depth in feet**  
■ 0-3 ■ 3 to 6 ■ 6 to 9 ■ 9 to 12 ■ Greater Than 12

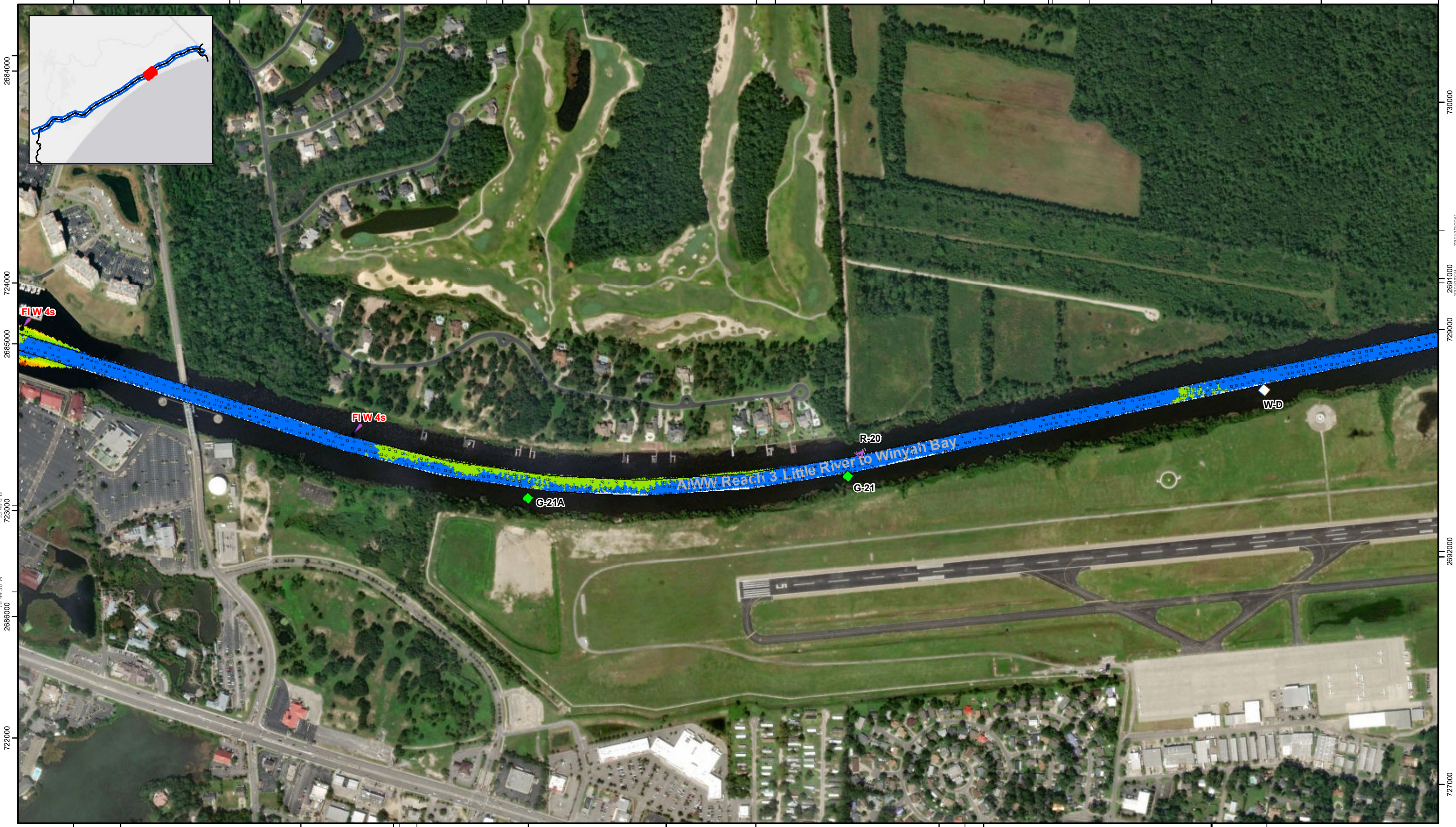


**Production Notes:**  
1. The information depicted on this product is for plotting purposes only.  
2. Vector hydrographic data derived from surveys conducted by the USACE and approved partners. Soundings are in feet and refer to Mean Lower Low Water (MLLW).  
3. Raster Background: ArcGIS Online Image Basemap.  
4. This product is not intended to be used for navigation. Mariners are encouraged to use all prudent safety measures.

In no event shall the U.S. Army Corps of Engineers, Charleston District Office, Spatial Data Branch be liable for direct, indirect, incidental, consequential or special damages of any kind, including, but not limited to, loss of anticipated profits or benefits arising out of use of or reliance on the data. These data sets have been developed from the best available sources. Although efforts have been made to ensure that the datasets are accurate and reliable, errors and variable conditions originating from physical sources used to develop the data may be reflected in the data supplied.



2684000 726000 2685000 727000 2686000 728000 2687000 2688000 729000 33°48'0"N 2689000 730000 2690000



2687000 722000 2688000 723000 2689000 724000 2690000 725000 2691000 7260000 2692000 33°48'30"N

**Atlantic Intercoastal Waterway (AIWW) Channel Survey**  
 The information depicted on this map represents the results of surveys made on the dates indicated and can only be considered as indicating the general conditions existing at that time.  
 Concluded on: **16 JAN 2020**  
 Little River, SC to Bucksport, SC

U.S. ARMY ENGINEER DISTRICT  
 CORPS OF ENGINEERS  
 CHARLESTON, SOUTH CAROLINA  
 SPATIAL DATA BRANCH  
 69A HAGOOD AVE  
 CHARLESTON, SC 29403  
 CESAC-GIS@USACE.ARMY.MIL

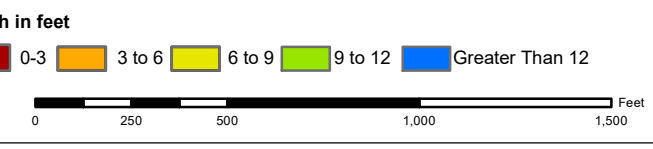
Designed By: <b>eHydro Software v3.82</b>	Survey Date: <b>16 JAN 2020</b>	Production Date: <b>24 JAN 2020</b>
Reviewed By: <b>CCW</b>	Absolute Scale: <b>1:6,000</b>	Project Reference Number: <b>CESAC-PRA-0001</b>
Reference Scale: <b>1 inch = 500 feet</b>	Survey Type: <b>CONDITION</b>	
Projection: <b>NAD 1983 StatePlane South Carolina FIPS 3900 Feet</b>		

**Shoalest Sounding**  
 Sounding may cover several point areas and is calculated per reach quarter area  
 "\*" indicates sounding above MLLW

**USCG Beacon**  
 Green  
 Red  
 White

**USCG Buoy**  
 Green  
 Red  
 Coast Guard Racon

**White**  
 Yellow  
 USCG Light



**Production Notes:**

- The information depicted on this product is for plotting purposes only.
- Vector hydrographic data derived from surveys conducted by the USACE and approved partners.
- Soundings are in feet and refer to Mean Lower Low Water (MLLW).
- Raster Background: ArcGIS Online Image Basemap

In no event shall the U.S. Army Corps of Engineers, Charleston District Office, Spatial Data Branch be liable for direct, indirect, incidental, consequential or special damages of any kind, including, but not limited to, loss of anticipated profits or benefits arising out of use of or reliance on the data.  
 These data sets have been developed from the best available sources. Although efforts have been made to ensure that the datasets are accurate and reliable, errors and variable conditions originating from physical sources used to develop the data may be reflected in the data supplied.  
 This product is not intended to be used for navigation.  
 Mariners are encouraged to use all prudent safety measures.



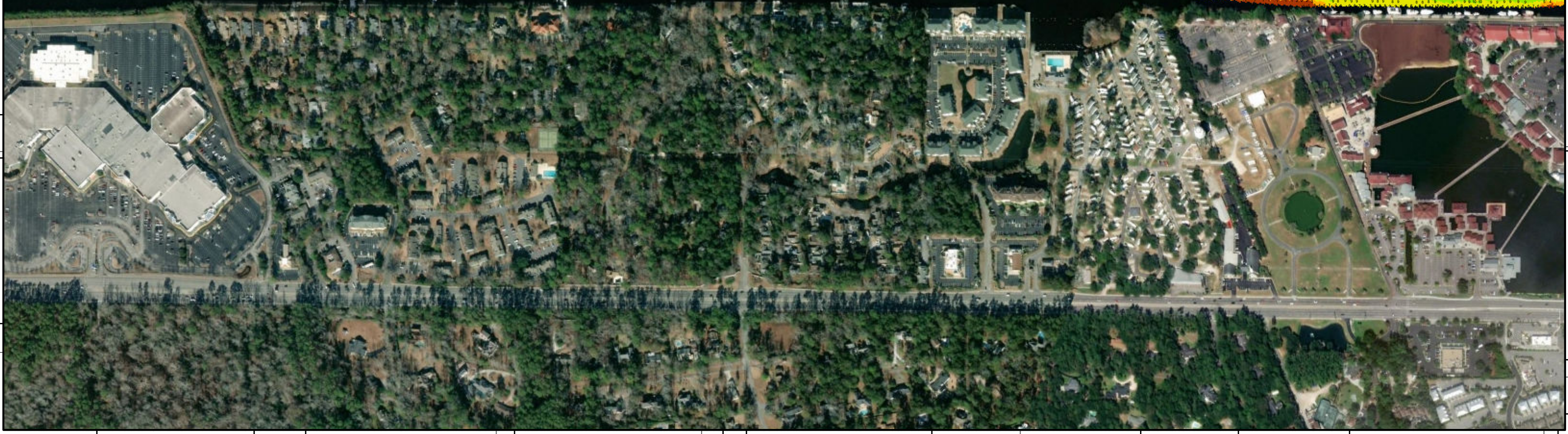
SHEET REFERENCE NUMBER  
**C003**  
 Page 8 of 24



33°48'0"N 2677000 723000 2678000 78°46'0"W 2679000 724000 2680000 78°45'30"W 2681000 2682000 2683000 78°45'0"W 2684000



722000 2677000 721000 2686000 720000 2678000 719000 2681000 2682000 2683000 2684000 721000 2685000 2686000 723000 35°45'0"N 722000 78°44'30"W 2686000 76°44'30"W



2679000 719000 2680000 78°45'30"W 2681000 33°47'30"N 2682000 2683000 78°45'0"W 2684000 721000 2685000 2686000 78°44'30"W

SHEET REFERENCE NUMBER C003 Page 9 of 24

**Atlantic Intercoastal Waterway (AIWW) Channel Survey**  
 The information depicted on this map represents the results of surveys made on the dates indicated and can only be considered as indicating the general conditions existing at that time.  
 Concluded on: **16 JAN 2020**  
 Little River, SC to Bucksport, SC

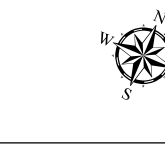
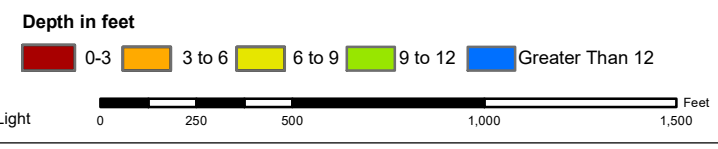
U.S. ARMY ENGINEER DISTRICT CORPS OF ENGINEERS CHARLESTON, SOUTH CAROLINA	Designed By: <b>eHydro Software v3.82</b>	Survey Date: <b>16 JAN 2020</b>	Production Date: <b>24 JAN 2020</b>
SPATIAL DATA BRANCH 69A HAGOOD AVE CHARLESTON, SC 29403 CESAC-GIS@USACE.ARMY.MIL	Reviewed By: <b>CCW</b>	Absolute Scale: <b>1:6,000</b>	Project Reference Number: <b>CESAC-PRA-0001</b>
	Reference Scale: <b>1 inch = 500 feet</b>	Survey Type: <b>CONDITION</b>	
	Projection: <b>NAD 1983 StatePlane South Carolina FIPS 3900 Feet</b>		

**Shoalest Sounding**  
 ● Sounding  
 Sounding may cover several point areas and is calculated per reach quarter area  
 \*+ indicates sounding above MLLW

**USCG Beacon**  
 ● Green  
 ▲ Red  
 □ White

**USCG Buoy**  
 ● Green  
 ● Red  
 ● Coast Guard Racon

○ White  
 ● Yellow  
 ● USCG Light



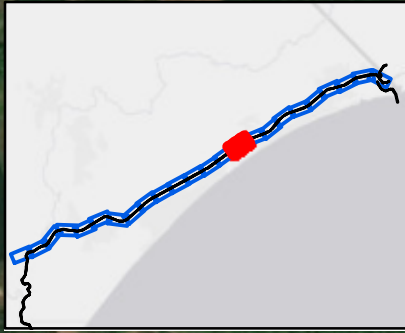
**Production Notes:**

- The information depicted on this product is for plotting purposes only.
- Vector hydrographic data derived from surveys conducted by the USACE and approved partners.
- Soundings are in feet and refer to Mean Lower Low Water (MLLW).
- Raster Background: ArcGIS Online Image Basemap

In no event shall the U.S. Army Corps of Engineers, Charleston District Office, Spatial Data Branch be liable for direct, indirect, incidental, consequential or special damages of any kind, including, but not limited to, loss of anticipated profits or benefits arising out of use of or reliance on the data.  
 These data sets have been developed from the best available sources. Although efforts have been made to ensure that the datasets are accurate and reliable, errors and variable conditions originating from physical sources used to develop the data may be reflected in the data supplied.  
 This product is not intended to be used for navigation.  
 Mariners are encouraged to use all prudent safety measures.



718000 2670000 78°47'30"W 2671000 719000 2672000 33°47'30"N 720000 2673000 78°47'0"W 2674000 2675000 722000 78°46'30"W 2676000



717000 33°47'0"N 78°47'30"W 716000 2671000 715000 2672000 714000 2673000 713000 2674000 712000 2675000 711000 2676000 71000 2677000 709000 2678000 708000 2679000 33°47'30"N 2679000 719000

SHEET REFERENCE NUMBER <b>C003</b> Page 10 of 24	<b>Atlantic Intercoastal Waterway (AIWW) Channel Survey</b> The information depicted on this map represents the results of surveys made on the dates indicated and can only be considered as indicating the general conditions existing at that time. Concluded on: <b>16 JAN 2020</b> Little River, SC to Bucksport, SC	U.S. ARMY ENGINEER DISTRICT CORPS OF ENGINEERS CHARLESTON, SOUTH CAROLINA  SPATIAL DATA BRANCH 69A HAGOOD AVE CHARLESTON, SC 29403 CESAC-GIS@USACE.ARMY.MIL	Designed By: <b>eHydro Software v3.82</b> Reviewed By: <b>CCW</b> Reference Scale: <b>1 inch = 500 feet</b> Projection: <b>NAD 1983 StatePlane South Carolina FIPS 3900 Feet</b>	Survey Date: <b>16 JAN 2020</b> Project Reference Number: <b>CESAC-PRA-0001</b> Survey Type: <b>CONDITION</b>	Production Date: <b>24 JAN 2020</b>
--	---	--	---	---	-------------------------------------

<b>Shoalest Sounding</b> Sounding Sounding may cover several point areas and is calculated per reach quarter area "+" indicates sounding above MLLW	<b>USCG Beacon</b> Green Red White	<b>USCG Buoy</b> Green Red Coast Guard Racon	White Yellow USCG Light	<b>Depth in feet</b> 0-3 3 to 6 6 to 9 9 to 12 Greater Than 12
--	---	---	-------------------------------	---

**Production Notes:**

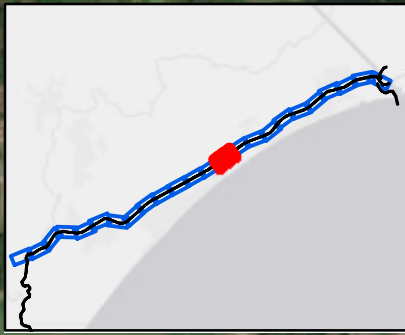
- The information depicted on this product is for plotting purposes only.
- Vector hydrographic data derived from surveys conducted by the USACE and approved partners.
- Soundings are in feet and refer to Mean Lower Low Water (MLLW).
- Raster Background: ArcGIS Online Image Basemap.

In no event shall the U.S. Army Corps of Engineers, Charleston District Office, Spatial Data Branch be liable for direct, indirect, incidental, consequential or special damages of any kind, including, but not limited to, loss of anticipated profits or benefits arising out of use of or reliance on the data.

These data sets have been developed from the best available sources. Although efforts have been made to ensure that the datasets are accurate and reliable, errors and variable conditions originating from physical sources used to develop the data may be reflected in the data supplied.

This product is not intended to be used for navigation. Mariners are encouraged to use all prudent safety measures.

78°49'0"W 713000 33°46'30"N 2664000 714000 2665000 78°48'30"W 2666000 2667000 716000 33°47'0"N 2668000 78°48'0"W 717000 2669000



2667000 33°46'30"N 2668000 711000 2669000 712000 267000 78°47'30"W 2671000 33°46'30"N 2672000 714000

**Atlantic Intercoastal Waterway (AIWW) Channel Survey**  
 The information depicted on this map represents the results of surveys made on the dates indicated and can only be considered as indicating the general conditions existing at that time.  
 Concluded on: **16 JAN 2020**  
 Little River, SC to Bucksport, SC

U.S. ARMY ENGINEER DISTRICT  
 CORPS OF ENGINEERS  
 CHARLESTON, SOUTH CAROLINA  
 SPATIAL DATA BRANCH  
 69A HAGOOD AVE  
 CHARLESTON, SC 29403  
 CESAC-GIS@USACE.ARMY.MIL

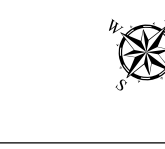
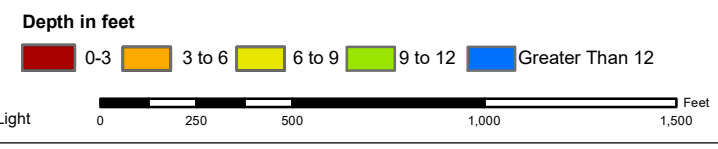
Designed By: <b>eHydro Software v3.82</b>	Survey Date: <b>16 JAN 2020</b>	Production Date: <b>24 JAN 2020</b>
Reviewed By: <b>CCW</b>	Absolute Scale: <b>1:6,000</b>	Project Reference Number: <b>CESAC-PRA-0001</b>
Reference Scale: <b>1 inch = 500 feet</b>	Survey Type: <b>CONDITION</b>	
Projection: <b>NAD 1983 StatePlane South Carolina FIPS 3900 Feet</b>		

**Shoalest Sounding**  
 ● Sounding  
 Sounding may cover several point areas and is calculated per reach quarter area  
 \*+ indicates sounding above MLLW

**USCG Beacon**  
 ● Green  
 ▲ Red  
 □ White

**USCG Buoy**  
 ● Green  
 ● Red  
 ● Coast Guard Racon

○ White  
 ● Yellow  
 ● USCG Light



**Production Notes:**

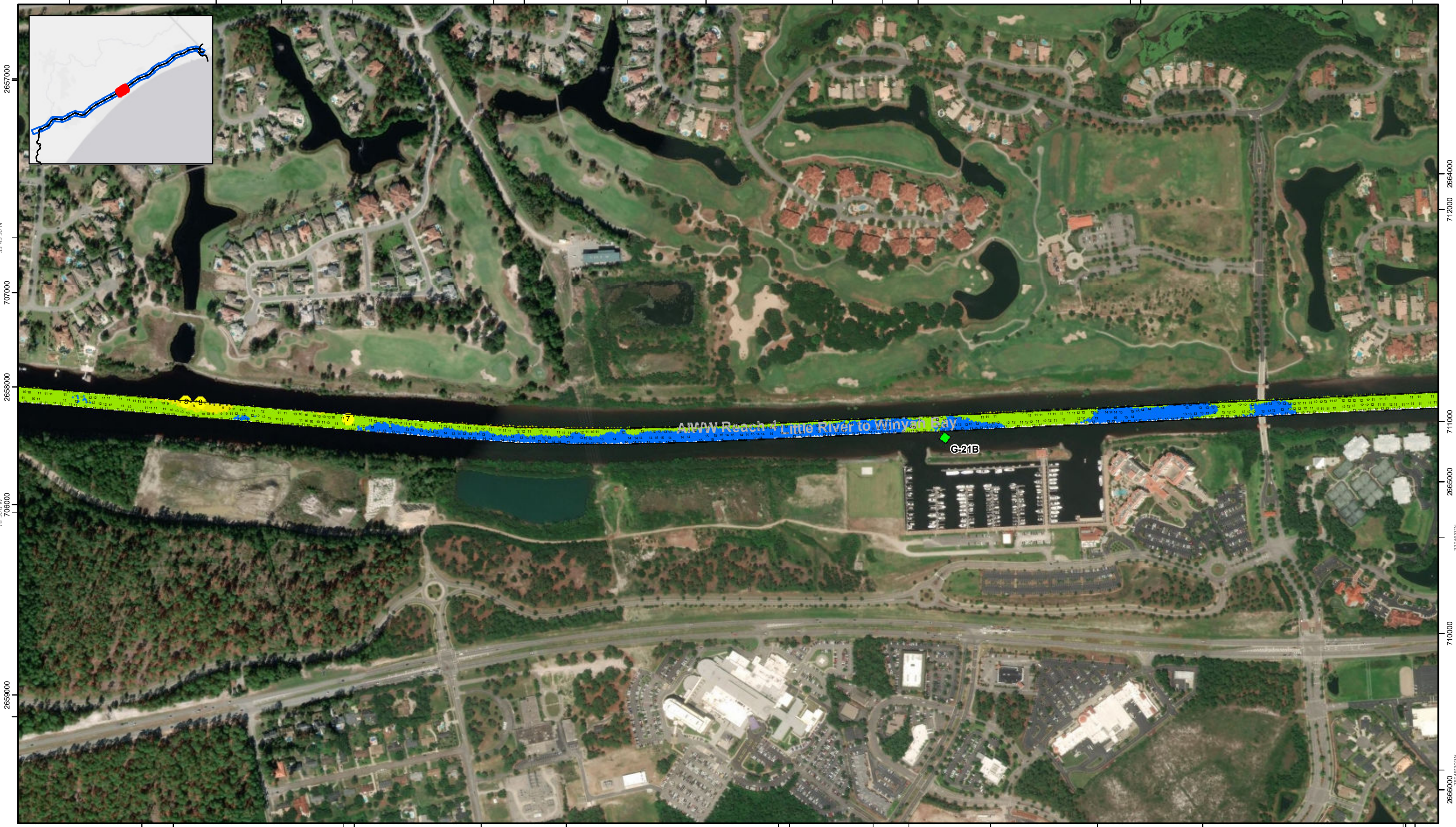
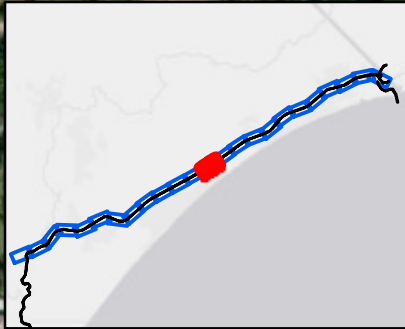
- The information depicted on this product is for plotting purposes only.
- Vector hydrographic data derived from surveys conducted by the USACE and approved partners.
- Soundings are in feet and refer to Mean Lower Low Water (MLLW).
- Raster Background: ArcGIS Online Image Basemap.

In no event shall the U.S. Army Corps of Engineers, Charleston District Office, Spatial Data Branch be liable for direct, indirect, incidental, consequential or special damages of any kind, including, but not limited to, loss of anticipated profits or benefits arising out of use of or reliance on the data.  
 These data sets have been developed from the best available sources. Although efforts have been made to ensure that the datasets are accurate and reliable, errors and variable conditions originating from physical sources used to develop the data may be reflected in the data supplied.  
 This product is not intended to be used for navigation.  
 Mariners are encouraged to use all prudent safety measures.



SHEET REFERENCE NUMBER  
**C003**  
 Page 11 of 24

2657000 709000 2658000 78°50'0"W 2659000 710000 33°46'0"N 2660000 711000 78°49'30"W 2661000 2662000 2663000 78°49'0"W



**Atlantic Intercoastal Waterway (AIWW) Channel Survey**  
 The information depicted on this map represents the results of surveys made on the dates indicated and can only be considered as indicating the general conditions existing at that time.  
 Concluded on: **16 JAN 2020**  
 Little River, SC to Bucksport, SC

U.S. ARMY ENGINEER DISTRICT CORPS OF ENGINEERS CHARLESTON, SOUTH CAROLINA	Designed By: <b>eHydro Software v3.8.2</b>	Survey Date: <b>16 JAN 2020</b>	Production Date: <b>24 JAN 2020</b>
SPATIAL DATA BRANCH 69A HAGOOD AVE CHARLESTON, SC 29403	Reviewed By: <b>CCW</b>	Absolute Scale: <b>1:6,000</b>	Project Reference Number: <b>CESAC-PRA-0001</b>
CESAC-GIS@USACE.ARMY.MIL	Reference Scale: <b>1 inch = 500 feet</b>	Survey Type: <b>CONDITION</b>	
	Projection: <b>NAD 1983 StatePlane South Carolina FIPS 3900 Feet</b>		

**Shoalest Sounding**  
 ● Sounding  
 Sounding may cover several point areas and is calculated per reach quarter area  
 "\*" indicates sounding above MLLW

**USCG Beacon**  
 ● Green  
 ▲ White

**USCG Buoy**  
 ● Green  
 ● Red  
 ● Coast Guard Racon

**White**  
 ● White  
 ● Yellow  
 ● USCG Light

**Depth in feet**  
 0-3 3 to 6 6 to 9 9 to 12 Greater Than 12

0 250 500 1,000 1,500 Feet

**Production Notes:**

- The information depicted on this product is for plotting purposes only.
- Vector hydrographic data derived from surveys conducted by the USACE and approved partners.
- Soundings are in feet and refer to Mean Lower Low Water (MLLW).
- Raster Background: ArcGIS Online Image Basemap.

In no event shall the U.S. Army Corps of Engineers, Charleston District Office, Spatial Data Branch be liable for direct, indirect, incidental, consequential or special damages of any kind, including, but not limited to, loss of anticipated profits or benefits arising out of use of or reliance on the data.

These data sets have been developed from the best available sources. Although efforts have been made to ensure that the datasets are accurate and reliable, errors and variable conditions originating from physical sources used to develop the data may be reflected in the data supplied.

**This product is not intended to be used for navigation. Mariners are encouraged to use all prudent safety measures.**

SHEET REFERENCE NUMBER  
**C003**  
 Page 12 of 24



2643000 78°53'0"W 33°44'30"N 701000 2644000 2645000 702000 2646000 78°52'30"W 2647000 703000 2648000 78°52'0"W 33°45'0"N 2649000



2644000 2645000 2646000 2647000 2648000 2649000 2650000 2651000 2652000



2646000 2647000 2648000 2649000 2650000 2651000 700000 2652000

SHEET  
REFERENCE  
NUMBER  
C003  
Page 14 of 24

**Atlantic Intercoastal Waterway (AIWW)  
Channel Survey**  
The information depicted on this map represents the results of surveys made on the dates indicated and can only be considered as indicating the general conditions existing at that time.  
Concluded on: **16 JAN 2020**  
Little River, SC to Bucksport, SC

U.S. ARMY ENGINEER DISTRICT  
CORPS OF ENGINEERS  
CHARLESTON, SOUTH CAROLINA  
SPATIAL DATA BRANCH  
69A HAGOOD AVE  
CHARLESTON, SC 29403  
CESAC-GIS@USACE.ARMY.MIL

Designed By: <b>eHydro Software v3.82</b>	Survey Date: <b>16 JAN 2020</b>	Production Date: <b>24 JAN 2020</b>
Reviewed By: <b>CCW</b>	Absolute Scale: <b>1:6,000</b>	Project Reference Number: <b>CESAC-PRA-0001</b>
Reference Scale: <b>1 inch = 500 feet</b>	Survey Type: <b>CONDITION</b>	
Projection: <b>NAD 1983 StatePlane South Carolina FIPS 3900 Feet</b>		

**Shoalest Sounding**  
Sounding may cover several point areas and is calculated per reach quarter area  
"±" indicates sounding above MLLW

**USCG Beacon**  
Green  
Red  
White

**USCG Buoy**  
Green  
Red  
Coast Guard Racon

White  
Yellow  
USCG Light

**Depth in feet**

0-3    3 to 6    6 to 9    9 to 12    Greater Than 12

0    250    500    1,000    1,500

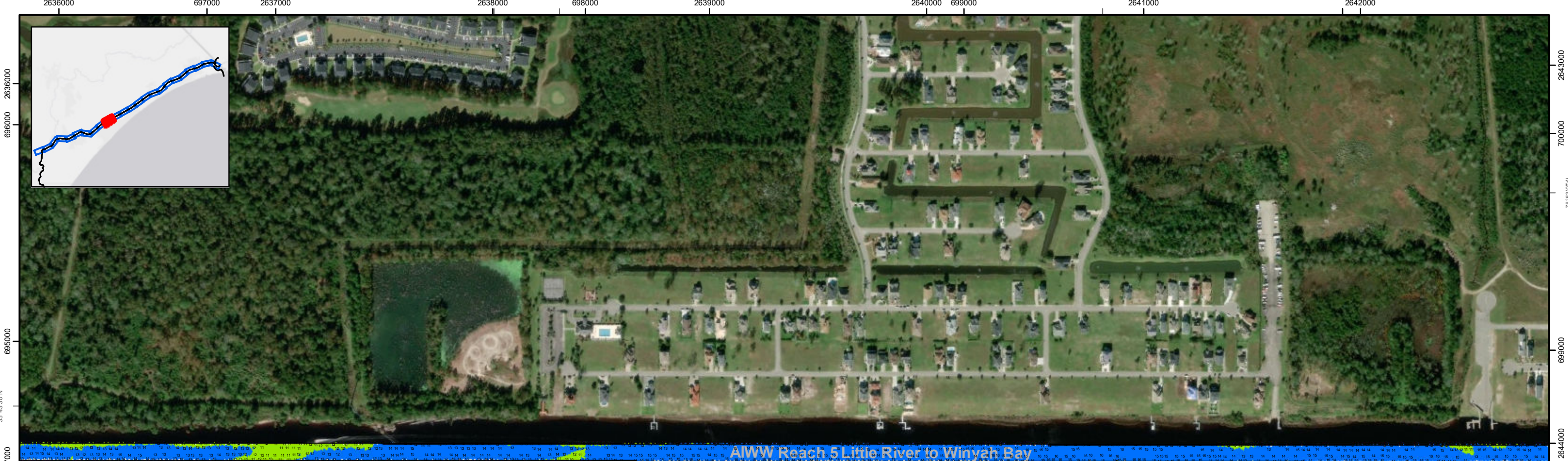
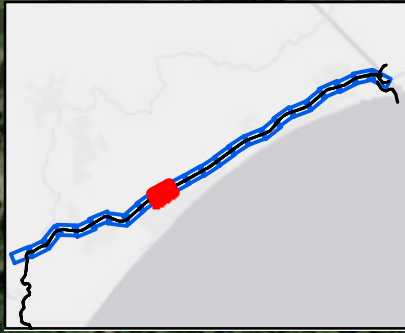


**Production Notes:**  
1. The information depicted on this product is for plotting purposes only.  
2. Vector hydrographic data derived from surveys conducted by the USACE and approved partners.  
3. Soundings are in feet and refer to Mean Lower Low Water (MLLW).  
4. Raster Background: ArcGIS Online Image Basemap.

In no event shall the U.S. Army Corps of Engineers, Charleston District Office, Spatial Data Branch be liable for direct, indirect, incidental, consequential or special damages of any kind, including, but not limited to, loss of anticipated profits or benefits arising out of use of or reliance on the data.  
These data sets have been developed from the best available sources. Although efforts have been made to ensure that the datasets are accurate and reliable, errors and variable conditions originating from physical sources used to develop the data may be reflected in the data supplied.  
This product is not intended to be used for navigation.  
Mariners are encouraged to use all prudent safety measures.



2636000 697000 2637000 33°44'0"N 2638000 78°54'0"W 698000 2639000 2640000 699000 78°53'30"W 2641000 2642000



AIWW Reach 5 Little River to Winyah Bay



78°54'0"W 2639000 693000 2640000 694000 2641000 695000 2642000 33°43'30"N 695000 2643000 78°53'0"W 2644000 696000 2645000

**Atlantic Intercoastal Waterway (AIWW) Channel Survey**  
 The information depicted on this map represents the results of surveys made on the dates indicated and can only be considered as indicating the general conditions existing at that time.  
 Concluded on: **16 JAN 2020**  
 Little River, SC to Bucksport, SC

U.S. ARMY ENGINEER DISTRICT  
 CORPS OF ENGINEERS  
 CHARLESTON, SOUTH CAROLINA  
 SPATIAL DATA BRANCH  
 69A HAGOOD AVE  
 CHARLESTON, SC 29403  
 CESAC-GIS@USACE.ARMY.MIL

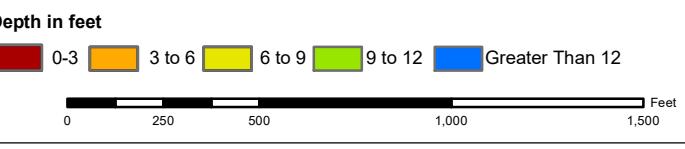
Designed By: <b>eHydro Software v3.8.2</b>	Survey Date: <b>16 JAN 2020</b>	Production Date: <b>24 JAN 2020</b>
Reviewed By: <b>CCW</b>	Absolute Scale: <b>1:6,000</b>	Project Reference Number: <b>CESAC-PRA-0001</b>
Reference Scale: <b>1 inch = 500 feet</b>	Survey Type: <b>CONDITION</b>	
Projection: <b>NAD 1983 StatePlane South Carolina FIPS 3900 Feet</b>		

**Shoalest Sounding**  
 Sounding may cover several point areas and is calculated per reach quarter area  
 "+" indicates sounding above MLLW

**USCG Beacon**  
 Green  
 Red

**USCG Buoy**  
 Green  
 Red  
 Coast Guard Racon

**USCG Light**  
 White  
 Yellow



**Production Notes:**

- The information depicted on this product is for plotting purposes only.
- Vector hydrographic data derived from surveys conducted by the USACE and approved partners.
- Soundings are in feet and refer to Mean Lower Low Water (MLLW).
- Raster Background: ArcGIS Online Image Basemap.

In no event shall the U.S. Army Corps of Engineers, Charleston District Office, Spatial Data Branch be liable for direct, indirect, incidental, consequential or special damages of any kind, including, but not limited to, loss of anticipated profits or benefits arising out of use of or reliance on the data.

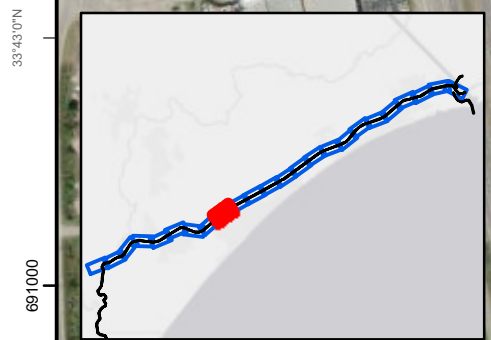
These data sets have been developed from the best available sources. Although efforts have been made to ensure that the datasets are accurate and reliable, errors and variable conditions originating from physical sources used to develop the data may be reflected in the data supplied.

This product is not intended to be used for navigation.  
 Mariners are encouraged to use all prudent safety measures.



SHEET REFERENCE NUMBER  
**C003**  
 Page 15 of 24

692000 2630000 78°55'30"W 693000 2631000 2632000 694000 33°43'30"N 2633000 78°55'0"W 695000 2634000 696000 2635000



33°42'30"N  
2631000  
78°55'30"W

2636000 696000  
695000  
2637000 33°43'30"N

2631000

2638000

693000

2632000 33°42'30"N 2633000 689000 78°55'0"W 2634000 690000 2635000 2636000 78°54'30"W 2637000 33°43'0"N 692000 2638000

SHEET  
REFERENCE  
NUMBER  
C003  
Page 16 of 24

**Atlantic Intercoastal Waterway (AIWW) Channel Survey**  
The information depicted on this map represents the results of surveys made on the dates indicated and can only be considered as indicating the general conditions existing at that time.  
Concluded on: **16 JAN 2020**  
Little River, SC to Bucksport, SC

U.S. ARMY ENGINEER DISTRICT  
CORPS OF ENGINEERS  
CHARLESTON, SOUTH CAROLINA  
SPATIAL DATA BRANCH  
69A HAGOOD AVE  
CHARLESTON, SC 29403  
CESAC-GIS@USACE.ARMY.MIL

Designed By: **eHydro Software v3.8.2**  
Reviewed By: **CCW**  
Reference Scale: **1 inch = 500 feet**  
Projection: **NAD 1983 StatePlane South Carolina FIPS 3900 Feet**

Survey Date: **16 JAN 2020**  
Production Date: **24 JAN 2020**  
Project Reference Number: **CESAC-PRA-0001**  
Survey Type: **CONDITION**

**Shoalest Sounding**  
● Sounding  
*Sounding may cover several point areas and is calculated per reach quarter area*  
\*+ indicates sounding above MLLW

**USCG Beacon**  
■ Green  
▲ Red  
□ White

**USCG Buoy**  
● Green  
● Red  
● Coast Guard Racon

○ White  
○ Yellow  
○ USCG Light

**Depth in feet**

0-3 3 to 6 6 to 9 9 to 12 Greater Than 12

0 250 500 1,000 1,500 Feet

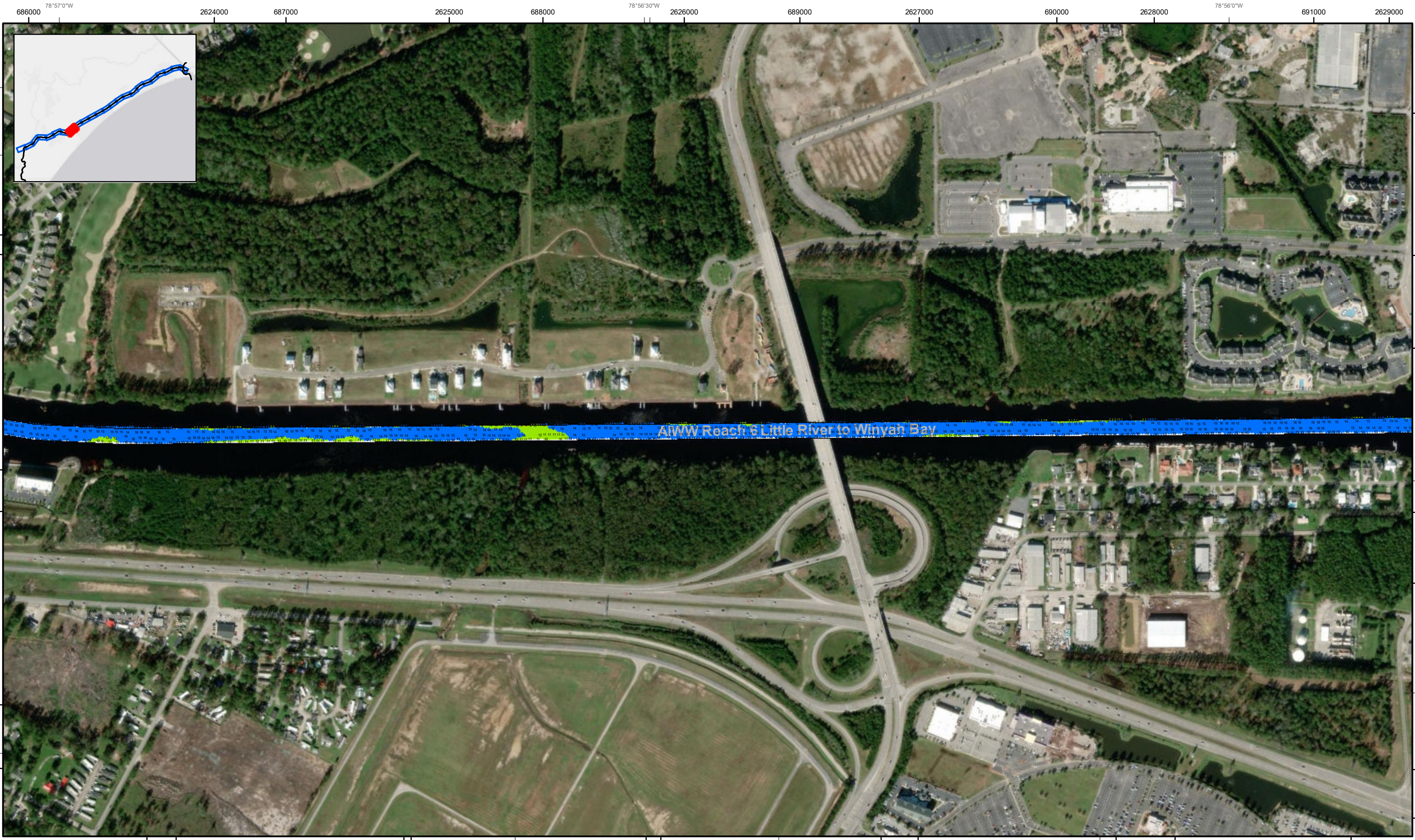


**Production Notes:**  
1. The information depicted on this product is for plotting purposes only.  
2. Vector hydrographic data derived from surveys conducted by the USACE and approved partners.  
3. Soundings are in feet and refer to Mean Lower Low Water (MLLW).  
4. Raster Background: ArcGIS Online Image Basemap

In no event shall the U.S. Army Corps of Engineers, Charleston District Office, Spatial Data Branch be liable for direct, indirect, incidental, consequential or special damages of any kind, including, but not limited to, loss of anticipated profits or benefits arising out of use of or reliance on the data.  
These data sets have been developed from the best available sources. Although efforts have been made to ensure that the datasets are accurate and reliable, errors and variable conditions originating from physical sources used to develop the data may be reflected in the data supplied.  
This product is not intended to be used for navigation.  
Mariners are encouraged to use all prudent safety measures.







**Atlantic Intercoastal Waterway (AIWW) Channel Survey**  
 The information depicted on this map represents the results of surveys made on the dates indicated and can only be considered as indicating the general conditions existing at that time.  
 Concluded on: **16 JAN 2020**  
 Little River, SC to Bucksport, SC

U.S. ARMY ENGINEER DISTRICT  
 CORPS OF ENGINEERS  
 CHARLESTON, SOUTH CAROLINA  
 SPATIAL DATA BRANCH  
 69A HAGOOD AVE  
 CHARLESTON, SC 29403  
 CESAC-GIS@USACE.ARMY.MIL

Designed By: <b>eHydro Software v3.82</b>	Survey Date: <b>16 JAN 2020</b>	Production Date: <b>24 JAN 2020</b>
Reviewed By: <b>CCW</b>	Absolute Scale: <b>1:6,000</b>	Project Reference Number: <b>CESAC-PRA-0001</b>
Reference Scale: <b>1 inch = 500 feet</b>	Survey Type: <b>CONDITION</b>	
Projection: <b>NAD 1983 StatePlane South Carolina FIPS 3900 Feet</b>		

**Shoalest Sounding**  
 Sounding may cover several point areas and is calculated per reach quarter area  
 "+" indicates sounding above MLLW

Sounding	USCG Beacon Green	USCG Buoy Green	White
Sounding	USCG Beacon Red	USCG Buoy Red	Yellow
Sounding	Coast Guard Racon	USCG Light	

**Depth in feet**

0-3	3 to 6	6 to 9	9 to 12	Greater Than 12
-----	--------	--------	---------	-----------------

0 250 500 1,000 1,500 Feet

**Production Notes:**

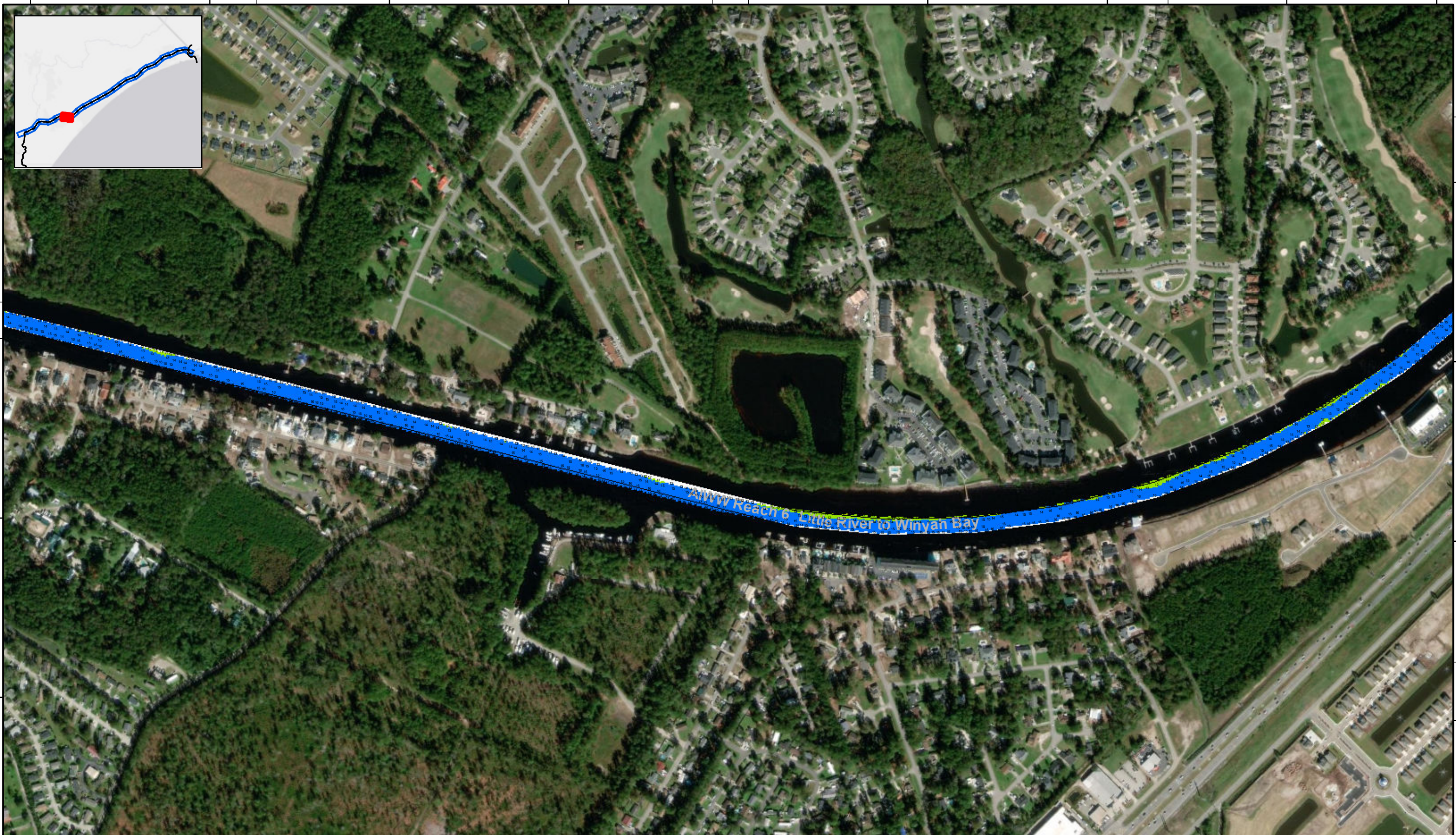
- The information depicted on this product is for plotting purposes only.
- Vector hydrographic data derived from surveys conducted by the USACE and approved partners.
- Soundings are in feet and refer to Mean Lower Low Water (MLLW).
- Raster Background: ArcGIS Online Image Basemap.

In no event shall the U.S. Army Corps of Engineers, Charleston District Office, Spatial Data Branch be liable for direct, indirect, incidental, consequential or special damages of any kind, including, but not limited to, loss of anticipated profits or benefits arising out of use of or reliance on the data.

These data sets have been developed from the best available sources. Although efforts have been made to ensure that the datasets are accurate and reliable, errors and variable conditions originating from physical sources used to develop the data may be reflected in the data supplied.

This product is not intended to be used for navigation.  
 Mariners are encouraged to use all prudent safety measures.

2617000 2618000 2619000 2620000 2621000 2622000 2623000 2624000 6860000 6850000 6840000 6830000



2617000 2618000 682000 2619000 2620000 2621000 2622000 2623000 2624000 78°58'0"W 78°57'30"W 78°57'0"W

SHEET  
REFERENCE  
NUMBER  
C003  
Page 18 of 24

**Atlantic Intercoastal Waterway (AIWW)  
Channel Survey**  
The information depicted on this map represents the results of surveys made on the dates indicated and can only be considered as indicating the general conditions existing at that time.  
Concluded on: **16 JAN 2020**  
Little River, SC to Bucksport, SC

U.S. ARMY ENGINEER DISTRICT  
CORPS OF ENGINEERS  
CHARLESTON, SOUTH CAROLINA  
SPATIAL DATA BRANCH  
69A HAGOOD AVE  
CHARLESTON, SC 29403  
CESAC-GIS@USACE.ARMY.MIL

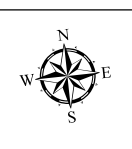
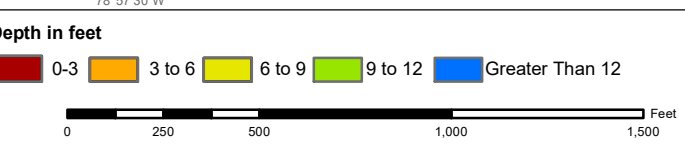
Designed By: <b>eHydro Software v3.82</b>	Survey Date: <b>16 JAN 2020</b>	Production Date: <b>24 JAN 2020</b>
Reviewed By: <b>CCW</b>	Absolute Scale: <b>1:6,000</b>	Project Reference Number: <b>CESAC-PRA-0001</b>
Reference Scale: <b>1 inch = 500 feet</b>	Survey Type: <b>CONDITION</b>	
Projection: <b>NAD 1983 StatePlane South Carolina FIPS 3900 Feet</b>		

**Shoalest Sounding**  
● Sounding  
*Sounding may cover several point areas and is calculated per reach quarter area*  
\*+ indicates sounding above MLLW

**USCG Beacon**  
■ Green  
▲ Red  
□ White

**USCG Buoy**  
● Green  
● Red  
● Coast Guard Racon

○ White  
○ Yellow  
○ USCG Light



**Production Notes:**  
1. The information depicted on this product is for plotting purposes only.  
2. Vector hydrographic data derived from surveys conducted by the USACE and approved partners.  
3. Soundings are in feet and refer to Mean Lower Low Water (MLLW).  
4. Raster Background: ArcGIS Online Image Basemap.

In no event shall the U.S. Army Corps of Engineers, Charleston District Office, Spatial Data Branch be liable for direct, indirect, incidental, consequential or special damages of any kind, including, but not limited to, loss of anticipated profits or benefits arising out of use of or reliance on the data.  
These data sets have been developed from the best available sources. Although efforts have been made to ensure that the datasets are accurate and reliable, errors and variable conditions originating from physical sources used to develop the data may be reflected in the data supplied.  
This product is not intended to be used for navigation.  
Mariners are encouraged to use all prudent safety measures.

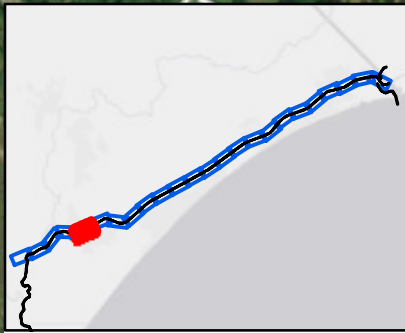


79°0'0"W 2609000 685000 33°42'0"N 2610000 78°59'30"W 2611000 686000 2612000 78°59'0"W 2613000 687000 2614000 688000 2615000



SHEET REFERENCE NUMBER <b>C003</b> Page 19 of 24	<b>Atlantic Intercoastal Waterway (AIWW) Channel Survey</b> The information depicted on this map represents the results of surveys made on the dates indicated and can only be considered as indicating the general conditions existing at that time. Concluded on: <b>16 JAN 2020</b> Little River, SC to Bucksport, SC	U.S. ARMY ENGINEER DISTRICT CORPS OF ENGINEERS CHARLESTON, SOUTH CAROLINA SPATIAL DATA BRANCH 69A HAGOOD AVE CHARLESTON, SC 29403 CESAC-GIS@USACE.ARMY.MIL	Designed By: <b>eHydro Software v3.82</b> Reviewed By: <b>CCW</b> Absolute Scale: <b>1:6,000</b> Reference Scale: <b>1 inch = 500 feet</b> Projection: <b>NAD 1983 StatePlane South Carolina FIPS 3900 Feet</b>	Survey Date: <b>16 JAN 2020</b> Production Date: <b>24 JAN 2020</b> Project Reference Number: <b>CESAC-PRA-0001</b> Survey Type: <b>CONDITION</b>	<b>Shoalest Sounding</b> Sounding may cover several point areas and is calculated per reach quarter area *+ indicates sounding above MLLW	<b>USCG Beacon</b> Green Red White	<b>USCG Buoy</b> Green Red Coast Guard Racon	White Yellow USCG Light	<b>Depth in feet</b> 0-3 3 to 6 6 to 9 9 to 12 Greater Than 12	0 250 500 1,000 1,500 Feet	Production Notes: 1. The information depicted on this product is for plotting purposes only. 2. Vector hydrographic data derived from surveys conducted by the USACE and approved partners. 3. Soundings are in feet and refer to Mean Lower Low Water (MLLW). 4. Raster Background: ArcGIS Online Image Basemap. In no event shall the U.S. Army Corps of Engineers, Charleston District Office, Spatial Data Branch be liable for direct, indirect, incidental, consequential or special damages of any kind, including, but not limited to, loss of anticipated profits or benefits arising out of use of or reliance on the data. These data sets have been developed from the best available sources. Although efforts have been made to ensure that the datasets are accurate and reliable, errors and variable conditions originating from physical sources used to develop the data may be reflected in the data supplied. This product is not intended to be used for navigation. Mariners are encouraged to use all prudent safety measures.	U.S. Army Corps of Engineers Charleston District
	78°59'30"W 2611000 681000 2612000 78°59'0"W 2613000 682000 33°41'30"N 2614000 683000 2615000 78°58'30"W 2616000 684000 2617000											

2602000 681000 2603000 79°11'0"W 2604000 33°41'30"N 682000 2605000 79°0'30"W 2606000 2607000 2608000 79°0'0"W



79°11'0"W 2604000 2605000 79°0'30"W 2606000 2607000 678000 2608000 79°0'0"W 2609000 679000 2610000 2603000 680000 681000 682000 683000 684000 685000 686000 687000 688000 689000 690000 691000 692000 693000 694000 695000 696000 697000 698000 699000 700000

SHEET REFERENCE NUMBER  
C003  
Page 20 of 24

**Atlantic Intercoastal Waterway (AIWW) Channel Survey**  
The information depicted on this map represents the results of surveys made on the dates indicated and can only be considered as indicating the general conditions existing at that time.  
Concluded on: **16 JAN 2020**  
Little River, SC to Bucksport, SC

U.S. ARMY ENGINEER DISTRICT  
CORPS OF ENGINEERS  
CHARLESTON, SOUTH CAROLINA  
SPATIAL DATA BRANCH  
69A HAGOOD AVE  
CHARLESTON, SC 29403  
CESAC-GIS@USACE.ARMY.MIL

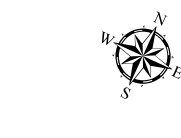
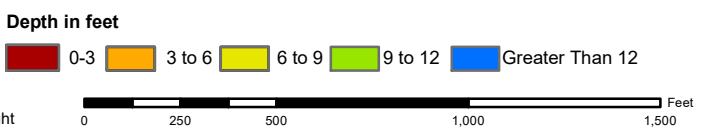
Designed By: <b>eHydro Software v3.82</b>	Survey Date: <b>16 JAN 2020</b>	Production Date: <b>24 JAN 2020</b>
Reviewed By: <b>CCW</b>	Absolute Scale: <b>1:6,000</b>	Project Reference Number: <b>CESAC-PRA-0001</b>
Reference Scale: <b>1 inch = 500 feet</b>	Survey Type: <b>CONDITION</b>	
Projection: <b>NAD 1983 StatePlane South Carolina FIPS 3900 Feet</b>		

**Shoalest Sounding**  
Sounding may cover several point areas and is calculated per reach quarter area  
\*+ indicates sounding above MLLW

**USCG Beacon**  
Green  
Red  
White

**USCG Buoy**  
Green  
Red  
Coast Guard Racon

**USCG Light**  
White  
Yellow

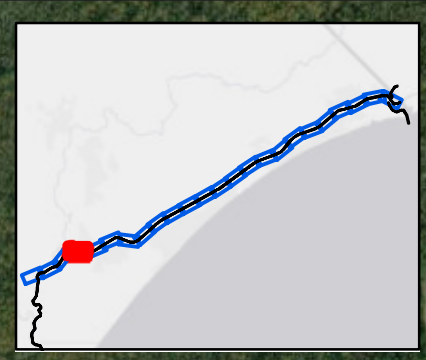


**Production Notes:**  
1. The information depicted on this product is for plotting purposes only.  
2. Vector hydrographic data derived from surveys conducted by the USACE and approved partners.  
3. Soundings are in feet and refer to Mean Lower Low Water (MLLW).  
4. Raster Background: ArcGIS Online Image Basemap

In no event shall the U.S. Army Corps of Engineers, Charleston District Office, Spatial Data Branch be liable for direct, indirect, incidental, consequential or special damages of any kind, including, but not limited to, loss of anticipated profits or benefits arising out of use of or reliance on the data.  
These data sets have been developed from the best available sources. Although efforts have been made to ensure that the datasets are accurate and reliable, errors and variable conditions originating from physical sources used to develop the data may be reflected in the data supplied.  
This product is not intended to be used for navigation.  
Mariners are encouraged to use all prudent safety measures.



2594000 2595000 2596000 2597000 2598000 2599000 2600000 2601000 2602000



2594000 2595000 2596000 2597000 2598000 2599000 2600000 2601000 2602000

SHEET  
REFERENCE  
NUMBER  
C003  
Page 21 of 24

**Atlantic Intercoastal Waterway (AIWW)  
Channel Survey**  
The information depicted on this map represents the results of surveys made on the dates indicated and can only be considered as indicating the general conditions existing at that time.  
Concluded on: **16 JAN 2020**  
Little River, SC to Bucksport, SC

U.S. ARMY ENGINEER DISTRICT  
CORPS OF ENGINEERS  
CHARLESTON, SOUTH CAROLINA  
SPATIAL DATA BRANCH  
69A HAGOOD AVE  
CHARLESTON, SC 29403  
CESAC-GIS@USACE.ARMY.MIL

Designed By: **eHydro Software v3.82**  
Reviewed By: **CCW**  
Reference Scale: **1 inch = 500 feet**  
Projection: **NAD 1983 StatePlane South Carolina FIPS 3900 Feet**

Survey Date: **16 JAN 2020**  
Production Date: **24 JAN 2020**  
Project Reference Number: **CESAC-PRA-0001**  
Survey Type: **CONDITION**

**Shoalest Sounding**  
● Sounding  
Sounding may cover several point areas and is calculated per reach quarter area  
\*+ indicates sounding above MLLW

**USCG Beacon**  
■ Green  
▲ Red  
□ White

**USCG Buoy**  
● Green  
● Red  
● Coast Guard Racon

○ White  
○ Yellow  
○ USCG Light

**Depth in feet**

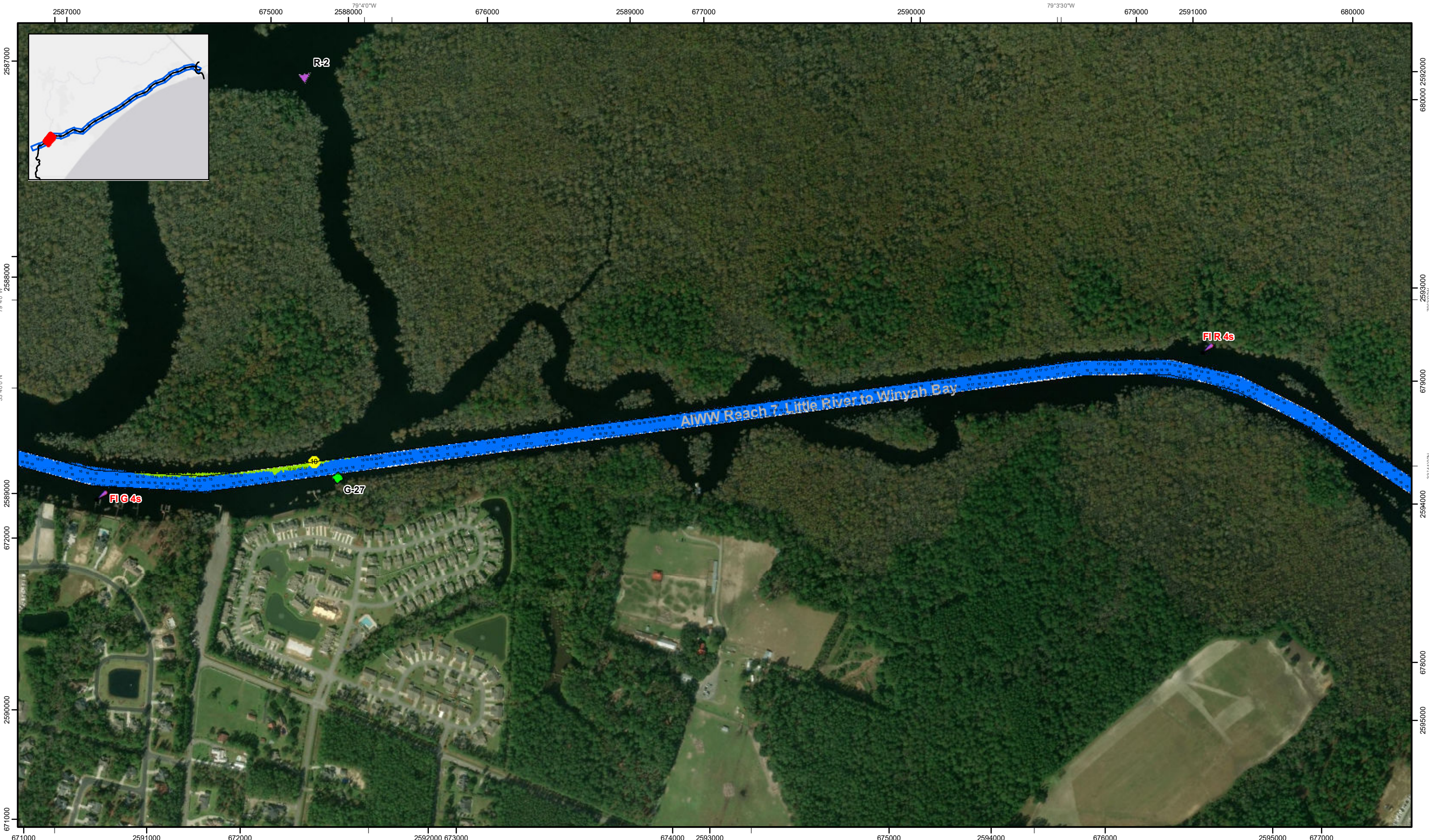
0-3 3 to 6 6 to 9 9 to 12 Greater Than 12

0 250 500 1,000 1,500 Feet



**Production Notes:**  
1. The information depicted on this product is for plotting purposes only.  
2. Vector hydrographic data derived from surveys conducted by the USACE and approved partners.  
3. Soundings are in feet and refer to Mean Lower Low Water (MLLW).  
4. Raster Background: ArcGIS Online Image Basemap.  
In no event shall the U.S. Army Corps of Engineers, Charleston District Office, Spatial Data Branch be liable for direct, indirect, incidental, consequential or special damages of any kind, including, but not limited to, loss of anticipated profits or benefits arising out of use of or reliance on the data.  
These data sets have been developed from the best available sources. Although efforts have been made to ensure that the datasets are accurate and reliable, errors and variable conditions originating from physical sources used to develop the data may be reflected in the data supplied.  
This product is not intended to be used for navigation.  
Mariners are encouraged to use all prudent safety measures.





SHEET  
REFERENCE  
NUMBER  
C003  
Page 22 of 24

**Atlantic Intercoastal Waterway (AIWW)  
Channel Survey**  
The information depicted on this map represents the  
results of surveys made on the dates indicated and  
can only be considered as indicating the general  
conditions existing at that time.  
Concluded on: **16 JAN 2020**  
Little River, SC to Bucksport, SC

U.S. ARMY ENGINEER DISTRICT  
CORPS OF ENGINEERS  
CHARLESTON, SOUTH CAROLINA  
SPATIAL DATA BRANCH  
69A HAGOOD AVE  
CHARLESTON, SC 29403  
CESAC-GIS@USACE.ARMY.MIL

Designed By: <b>eHydro Software v3.82</b>	Survey Date: <b>16 JAN 2020</b>	Production Date: <b>24 JAN 2020</b>
Reviewed By: <b>CCW</b>	Absolute Scale: <b>1:6,000</b>	Project Reference Number: <b>CESAC-PRA-0001</b>
Reference Scale: <b>1 inch = 500 feet</b>	Survey Type: <b>CONDITION</b>	
Projection: <b>NAD 1983 StatePlane South Carolina FIPS 3900 Feet</b>		

**Shoalest Sounding**  
Sounding may cover several  
point areas and is calculated  
per reach quarter area  
"±" indicates sounding above MLLW

**USCG Beacon**  
Green  
White

**USCG Buoy**  
Green  
Red  
Coast Guard Racon

**USCG Light**  
White  
Yellow

**Depth in feet**

0-3	3 to 6	6 to 9	9 to 12	Greater Than 12
-----	--------	--------	---------	-----------------

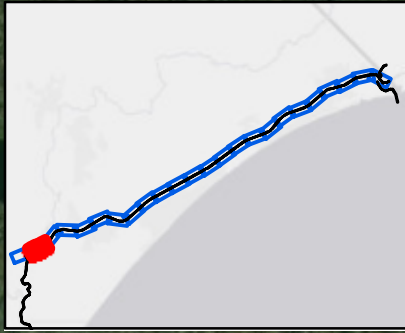
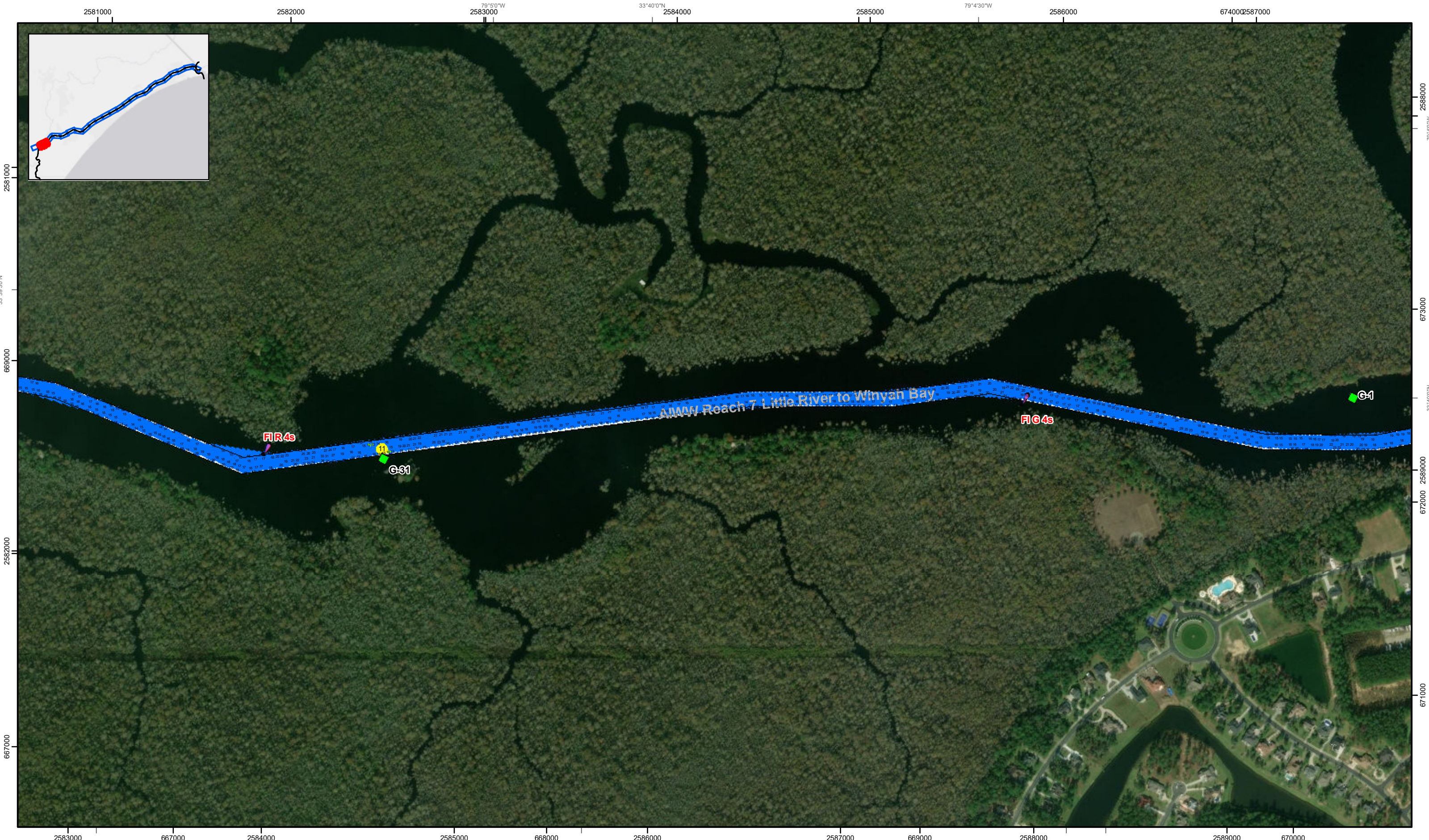
0 250 500 1,000 1,500 Feet



**Production Notes:**  
1. The information depicted on this  
product is for plotting purposes only  
2. Vector hydrographic data derived  
from surveys conducted by the  
USACE and approved partners  
3. Soundings are in feet and refer  
to Mean Lower Low Water (MLLW)  
4. Raster Background: ArcGIS Online  
Image Basemap  
This product is not intended to be used for navigation.  
Mariners are encouraged to use all prudent safety measures.

In no event shall the U.S. Army Corps of Engineers, Charleston  
District Office, Spatial Data Branch be liable for direct, indirect,  
incidental, consequential or special damages of any kind, including,  
but not limited to, loss of anticipated profits or benefits arising out of  
use of or reliance on the data.  
These data sets have been developed from the best available  
sources. Although efforts have been made to ensure that the  
datasets are accurate and reliable, errors and variable conditions  
originating from physical sources used to develop the data may be  
reflected in the data supplied.  
This product is not intended to be used for navigation.  
Mariners are encouraged to use all prudent safety measures.





SHEET REFERENCE NUMBER  
**C003**  
 Page 23 of 24

**Atlantic Intercoastal Waterway (AIWW) Channel Survey**  
 The information depicted on this map represents the results of surveys made on the dates indicated and can only be considered as indicating the general conditions existing at that time.  
 Concluded on: **16 JAN 2020**  
 Little River, SC to Bucksport, SC

U.S. ARMY ENGINEER DISTRICT CORPS OF ENGINEERS CHARLESTON, SOUTH CAROLINA  SPATIAL DATA BRANCH 69A HAGOOD AVE CHARLESTON, SC 29403 CESAC-GIS@USACE.ARMY.MIL	Designed By: <b>eHydro Software v3.82</b>  Reviewed By: <b>CCW</b>  Reference Scale: <b>1 inch = 500 feet</b>  Projection: <b>NAD 1983 StatePlane South Carolina FIPS 3900 Feet</b>	Survey Date: <b>16 JAN 2020</b>  Project Reference Number: <b>CESAC-PRA-0001</b>  Survey Type: <b>CONDITION</b>	Production Date: <b>24 JAN 2020</b>
--	---	--	--

**Shoalest Sounding**  
 Sounding may cover several point areas and is calculated per reach quarter area  
 "+" indicates sounding above MLLW

<b>USCG Beacon</b> Green Red White	<b>USCG Buoy</b> Green Red Coast Guard Racon	White Yellow USCG Light
---	---	-------------------------------

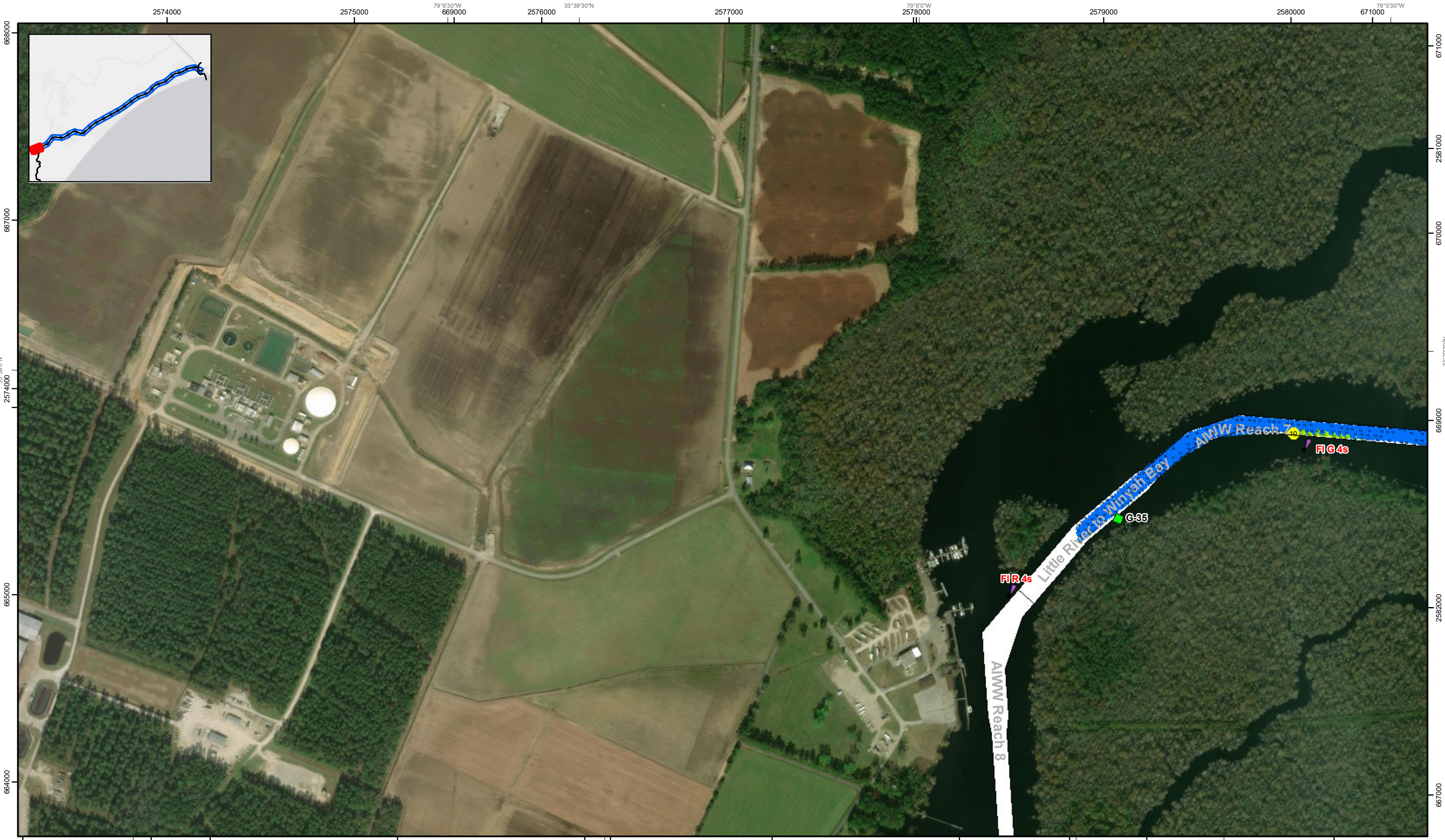
**Depth in feet**  
 0-3    3 to 6    6 to 9    9 to 12    Greater Than 12

0    250    500    1,000    1,500 Feet

**Production Notes:**  
 1. The information depicted on this product is for plotting purposes only.  
 2. Vector hydrographic data derived from surveys conducted by the USACE and approved partners.  
 3. Soundings are in feet and refer to Mean Lower Low Water (MLLW).  
 4. Raster Background: ArcGIS Online Image Basemap.

In no event shall the U.S. Army Corps of Engineers, Charleston District Office, Spatial Data Branch be liable for direct, indirect, incidental, consequential or special damages of any kind, including, but not limited to, loss of anticipated profits or benefits arising out of use of or reliance on the data.  
 These data sets have been developed from the best available sources. Although efforts have been made to ensure that the datasets are accurate and reliable, errors and variable conditions originating from physical sources used to develop the data may be reflected in the data supplied.  
**This product is not intended to be used for navigation.**  
**Mariners are encouraged to use all prudent safety measures.**





SHEET  
REFERENCE  
NUMBER  
C003  
Page 24 of 24

**Atlantic Intracoastal Waterway (AIWW)  
Channel Survey**  
The information depicted on this map represents the results of surveys made on the dates indicated and can only be considered as indicating the general conditions existing at that time.  
Concluded on: **16 JAN 2020**  
Little River, SC to Bucksport, SC

U.S. ARMY ENGINEER DISTRICT  
CORPS OF ENGINEERS  
CHARLESTON, SOUTH CAROLINA  
SPATIAL DATA BRANCH  
69A HAGOOD AVE  
CHARLESTON, SC 29403  
CESAC-GIS@USACE.ARMY.MIL

Designed By: <b>eHydro Software v3.82</b>	Survey Date: <b>16 JAN 2020</b>	Production Date: <b>24 JAN 2020</b>
Reviewed By: <b>CCW</b>	Absolute Scale: <b>1:6,000</b>	Project Reference Number: <b>CESAC-PRA-0001</b>
Reference Scale: <b>1 inch = 500 feet</b>	Survey Type: <b>CONDITION</b>	
Projection: <b>NAD 1983 StatePlane South Carolina FIPS 3900 Feet</b>		

**Shoalest Sounding**  
Sounding may cover several point areas and is calculated per reach quarter area  
"±" indicates sounding above MLLW

**USCG Beacon**  
Green  
Red  
White

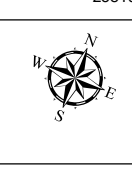
**USCG Buoy**  
Green  
Red  
Coast Guard Racon

**USCG Light**  
White  
Yellow

**Depth in feet**

0-3	3 to 6	6 to 9	9 to 12	Greater Than 12
-----	--------	--------	---------	-----------------

0 250 500 1,000 1,500 Feet



**Production Notes:**  
1. The information depicted on this product is for plotting purposes only.  
2. Vector hydrographic data derived from surveys conducted by the USACE and approved partners.  
3. Soundings are in feet and refer to Mean Lower Low Water (MLLW).  
4. Raster Background: ArcGIS Online Image Basemap.  
In no event shall the U.S. Army Corps of Engineers, Charleston District Office, Spatial Data Branch be liable for direct, indirect, incidental, consequential or special damages of any kind, including, but not limited to, loss of anticipated profits or benefits arising out of use of or reliance on the data.  
These data sets have been developed from the best available sources. Although efforts have been made to ensure that the datasets are accurate and reliable, errors and variable conditions originating from physical sources used to develop the data may be reflected in the data supplied.  
**This product is not intended to be used for navigation.**  
Mariners are encouraged to use all prudent safety measures.

