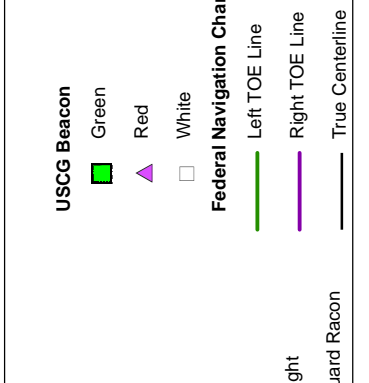
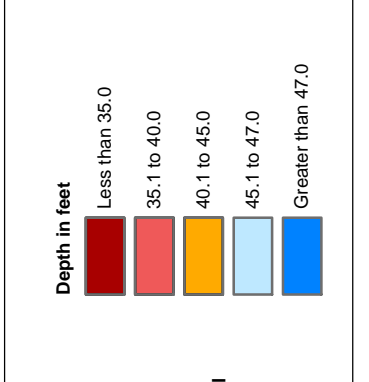
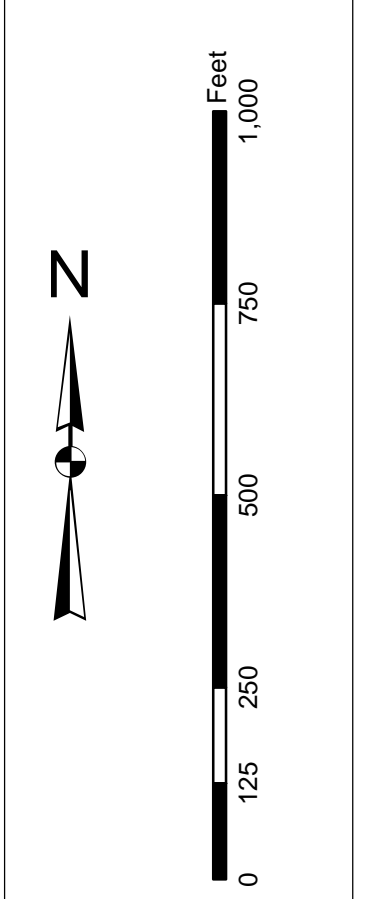


In the event that the U.S. Army Corps of Engineers, Charleston District Office, Spatial Data Branch is unable to locate, update, or correct the information in this map, the user assumes all liability for any errors or omissions. These data have been developed from the best available information and are not intended for use as a substitute for a professional survey. The user assumes all liability for any errors or omissions. No warranty is made by the U.S. Army Corps of Engineers, Charleston District Office, for the accuracy or reliability of the data. The user is encouraged to use all prudent safety measures.

Production Notes:
1. This map is for informational purposes only.
2. The map is not intended for navigation.
3. The map is not intended for use in any legal proceedings.
4. The map is not intended for use in any engineering project.
5. The map is not intended for use in any other application.
6. The map is not intended for use in any other application.
7. The map is not intended for use in any other application.
8. The map is not intended for use in any other application.

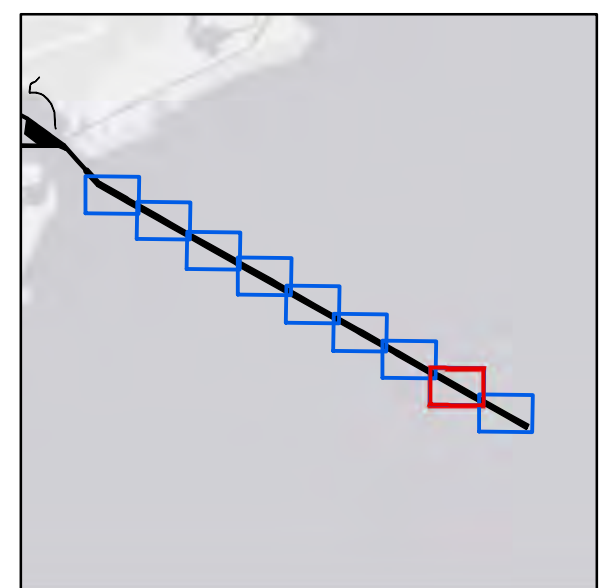
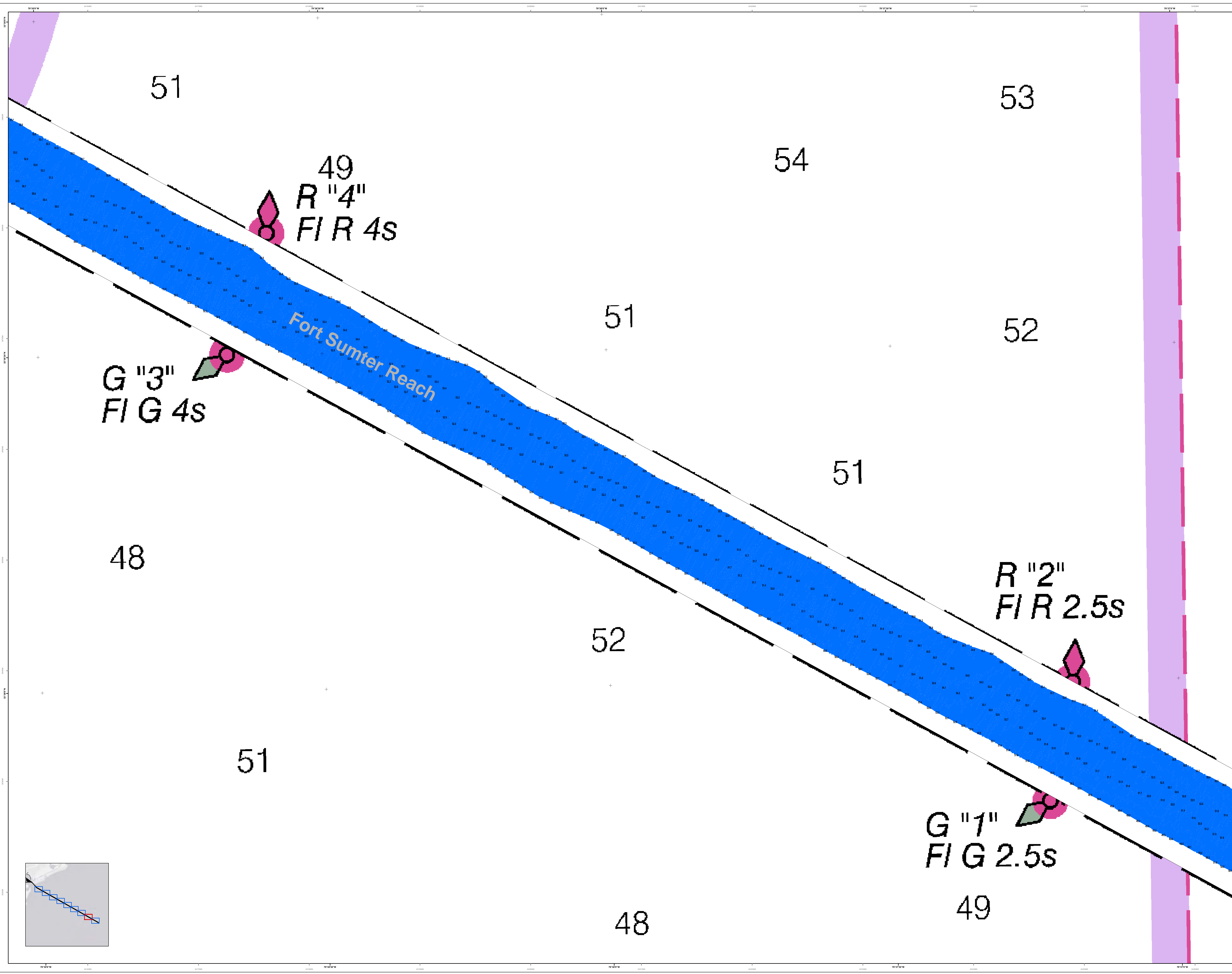


Designed By:	Survey Date:	Production Date:
Reviewed By:	08 AUG 2018	30 AUG 2018
Checked By:	Project Reference Number:	
Approved By:	13000	
	Scale:	CONDITION
	1 inch = 250 feet	
	Projection:	NAD 1983 StatePlane South Carolina FIPS 3300 Feet Intl

U.S. Army Corps of Engineers
Charleston District
Spatial Data Branch
Charleston, South Carolina
38A Haddow Ave
Charleston, SC 29405
CESAC-GIS@USACE.ARMY.MIL

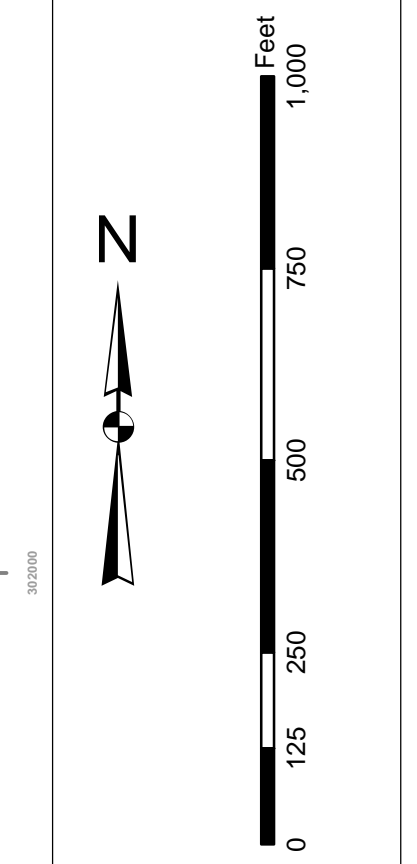
Charleston Entrance Channel Survey
The information depicted on this map represents the results of surveys made on the dates indicated and can only be used for the purposes for which it was prepared. No warranty is made by the U.S. Army Corps of Engineers, Charleston District Office, for the accuracy or reliability of the data. The user is encouraged to use all prudent safety measures.
Concluded on: 08 AUG 2018
Charleston, South Carolina

SHEET REFERENCE NUMBER
C002
SHEET 2 OF 9



In the event that the U.S. Army Corps of Engineers, Charleston District Office, Special Data Branch is made to publish, distribute, or disseminate this information, it is to be published, distributed, or disseminated in its entirety and not in part. This information is provided for informational purposes only and is not intended to be used for any other purpose. No warranty is made by the U.S. Army Corps of Engineers, Charleston District Office, Special Data Branch for the accuracy or completeness of the information provided. The user is encouraged to use all prudent safety measures.

Production Notes:
1. This map is a preliminary map.
2. This map is for planning purposes only.
3. This map is not to be used for navigation.
4. This map is not to be used for legal purposes.
5. This map is not to be used for engineering purposes.
6. This map is not to be used for construction purposes.
7. This map is not to be used for any other purpose.
8. This map is not to be used for any other purpose.
9. This map is not to be used for any other purpose.
10. This map is not to be used for any other purpose.



Legend

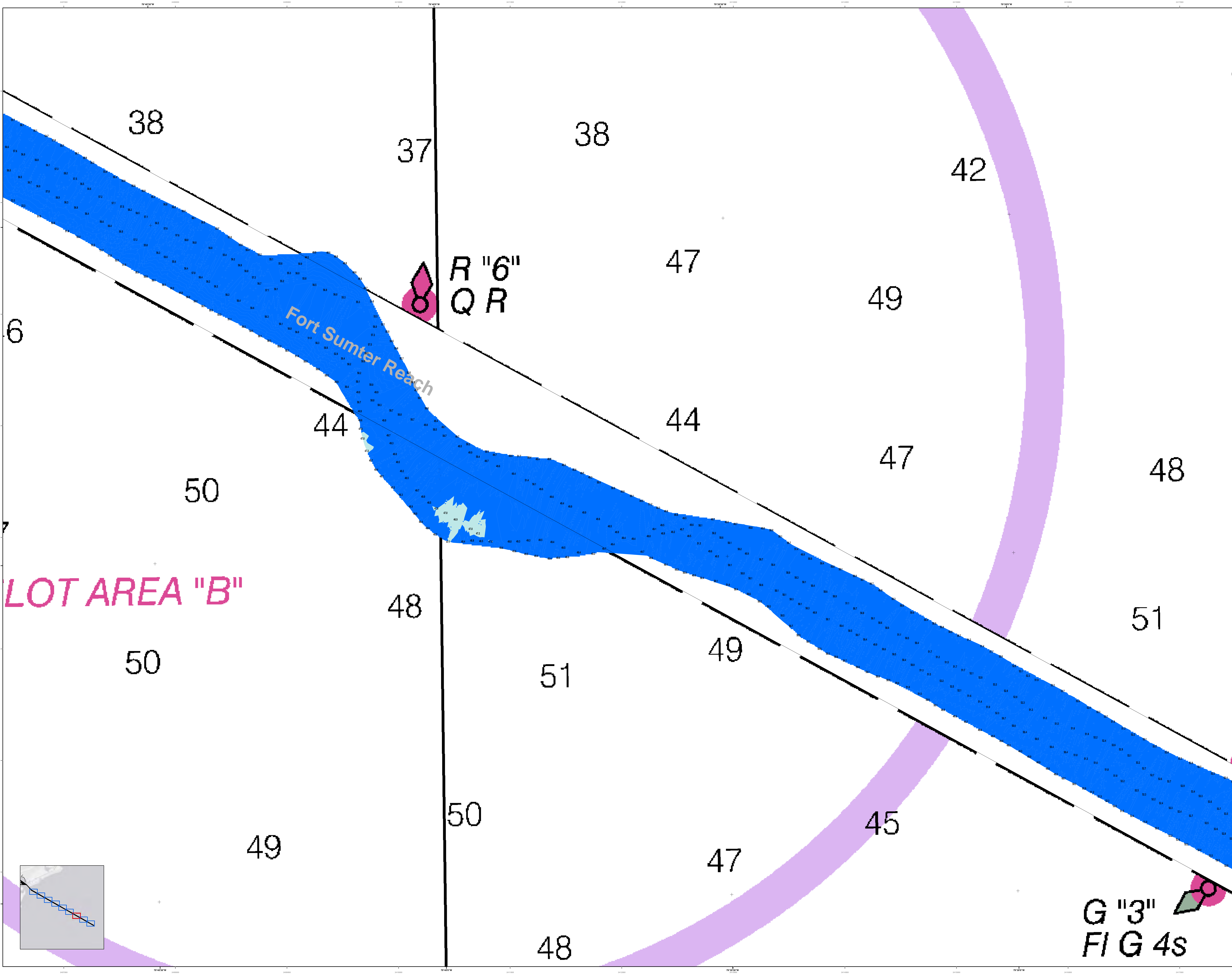
Channel
 - Fort Sumter Reach
 - Federal Navigable Channel
 - State Navigable Channel
 - Other Channel

Water
 - Water
 - Wetland
 - Shaded Wetland
 - Other Water

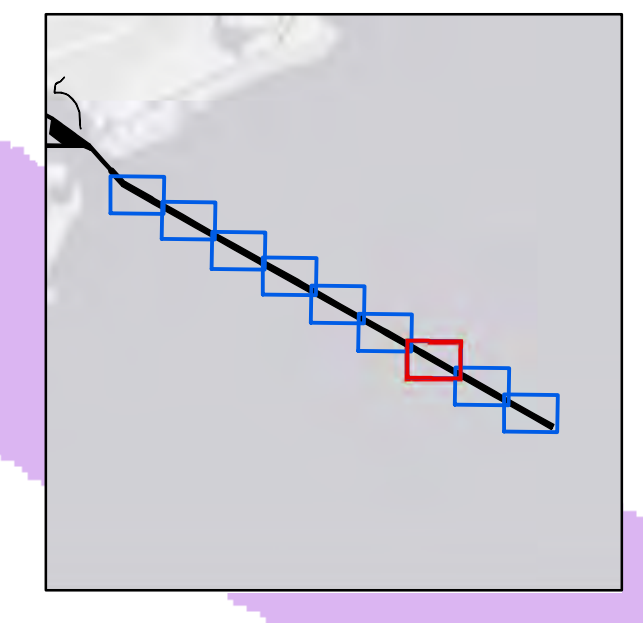
Other
 - Road
 - Utility Line
 - Boundary Line
 - Spot Elevation
 - Contour Line
 - Spot Elevation

U.S. Army Corps of Engineers Charleston District Office Special Data Branch Charleston, SC 29405 CESAC-GIS/USACE.ARMY.MIL	Designed By: Hydro Software v3.82	Reviewed By: 1:50,000 1 inch = 250 feet	Projection: NAD 1983 StatePlane South Carolina FIPS 3900 Feet Intl
Survey Date: 08 AUG 2018	Production Date: 30 AUG 2018	Project Reference Number: 1803001D	Sheet Scale: CONDITION

Charleston Entrance Channel Survey
The information depicted on this map represents the results of surveys made on the dates indicated and can only be used for the purposes stated. No general conditions exist at this time.
Concluded on: 08 AUG 2018
Charleston, South Carolina

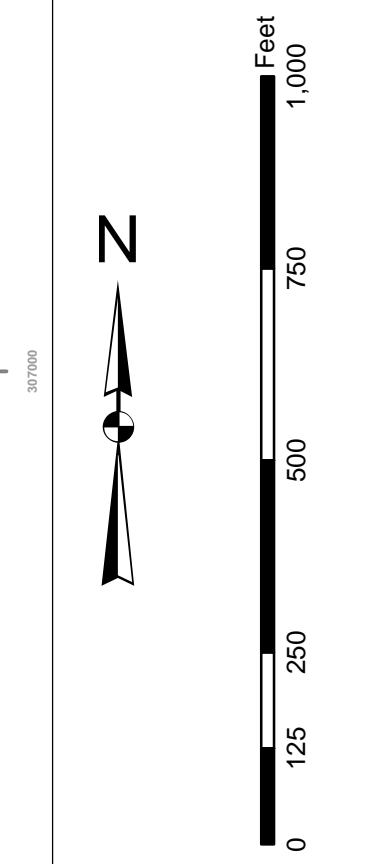


LOT AREA "B"



In the event that the U.S. Army Corps of Engineers, Charleston District Office, Special Data Branch is made to issue, publish, or disseminate this information, it is to be disseminated on a non-exclusive basis. This information is provided for informational purposes only and is not intended to be used for any other purpose. The information is provided as is and is not intended to be used for any other purpose. The information is provided as is and is not intended to be used for any other purpose. The information is provided as is and is not intended to be used for any other purpose.

Production Notes:
1. This is a preliminary map.
2. The information is provided for informational purposes only.
3. The information is provided as is and is not intended to be used for any other purpose.
4. The information is provided as is and is not intended to be used for any other purpose.
5. The information is provided as is and is not intended to be used for any other purpose.



Legend

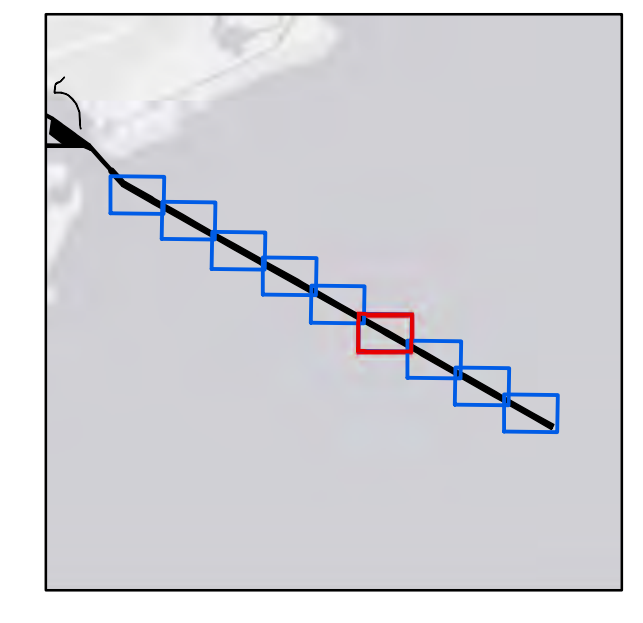
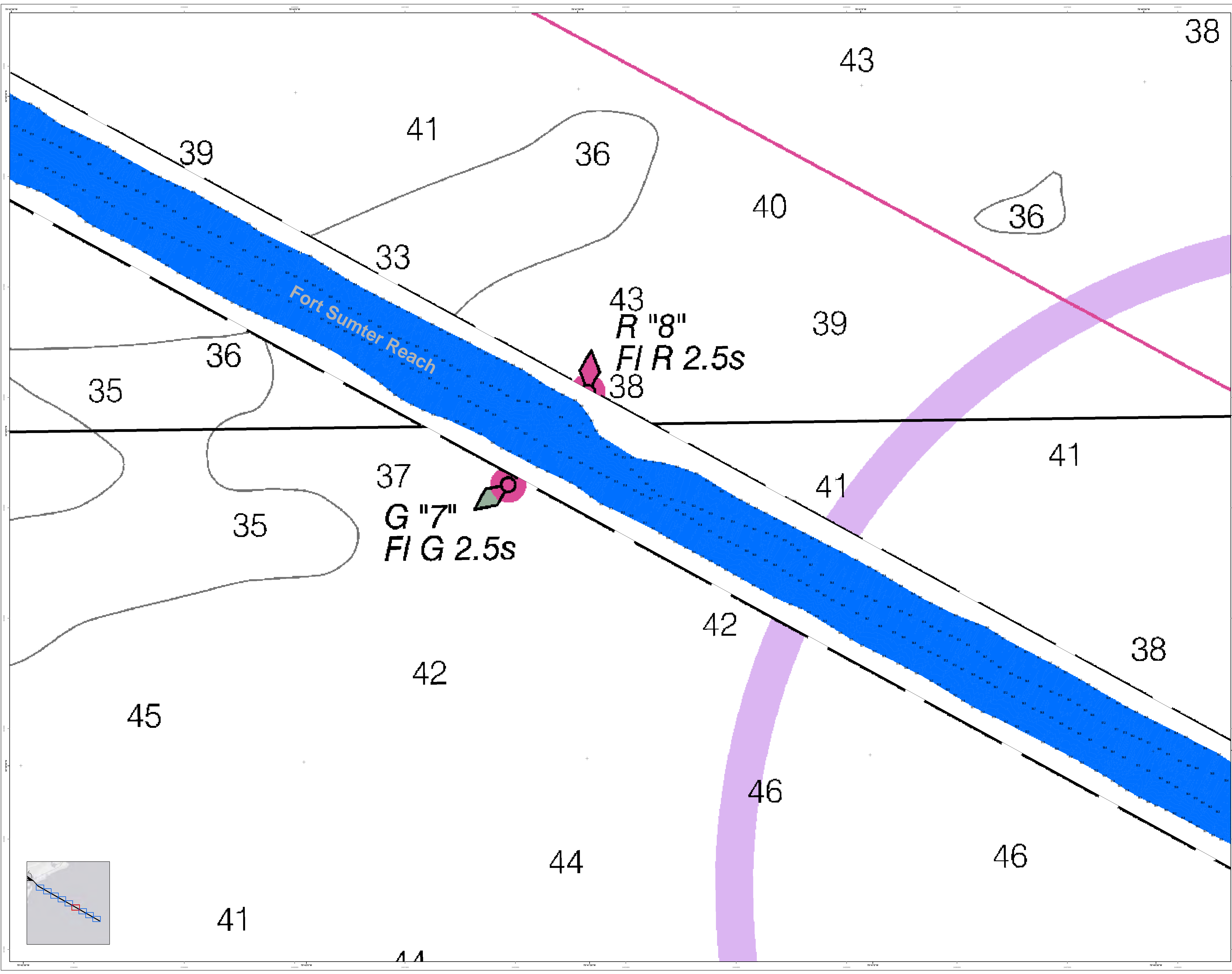
Channel
 - Fort Sumter Reach (Blue)
 - Other Channels (Light Blue)

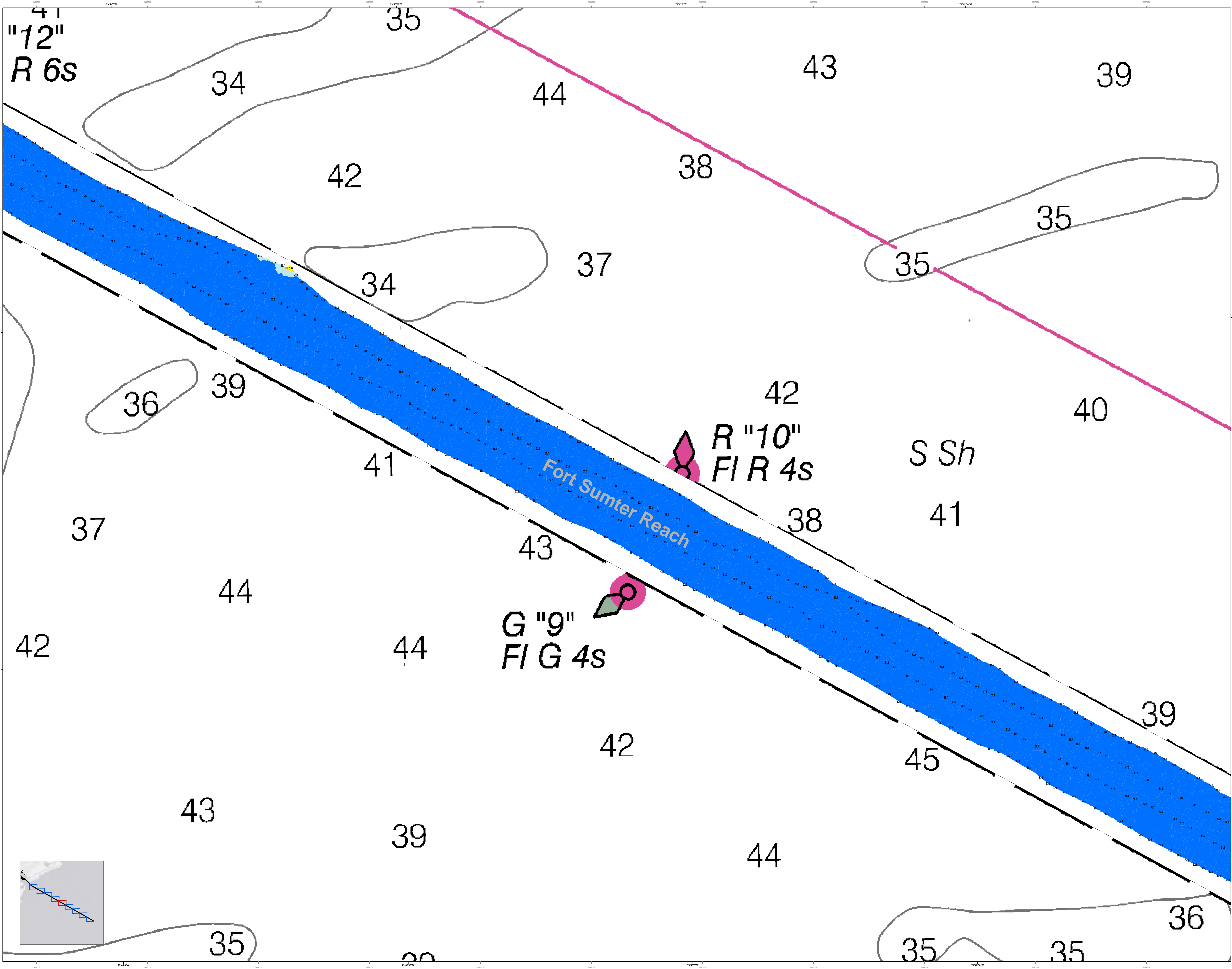
Structure
 - G "7" FIG 2.5s (Pink diamond)
 - R "8" FIR 2.5s (Pink diamond)

Other
 - Contour Lines (Black)
 - Property Lines (Black)
 - Easement Lines (Black)

Designed By: Hydro Software v3.82	Survey Date: 08 AUG 2018	Production Date: 30 AUG 2018
Reviewed By: 1:5000	Project Reference Number: P000010	Project Reference Number: P000010
Reference Scale: 1 inch = 250 feet	Scale: CONDITION	Scale: CONDITION
Projection: NAD 1983 StatePlane South Carolina FIPS 3900 Feet Int		

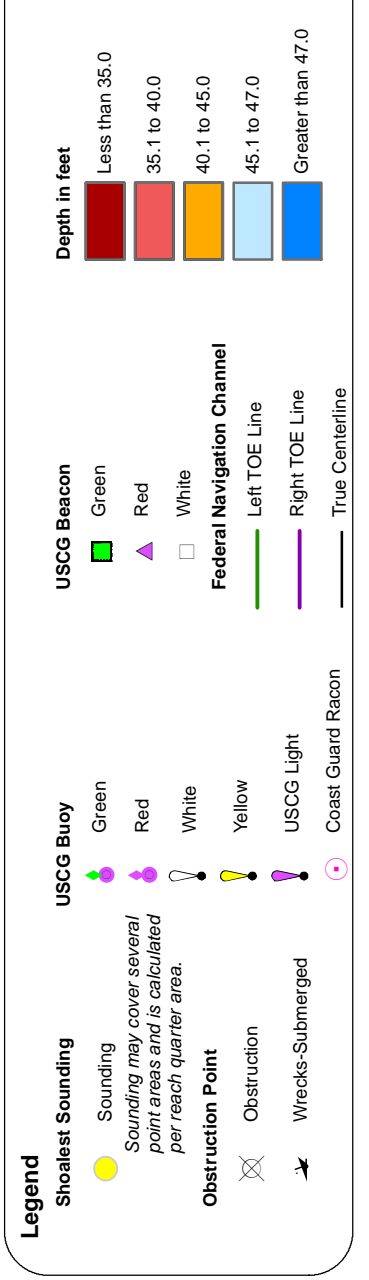
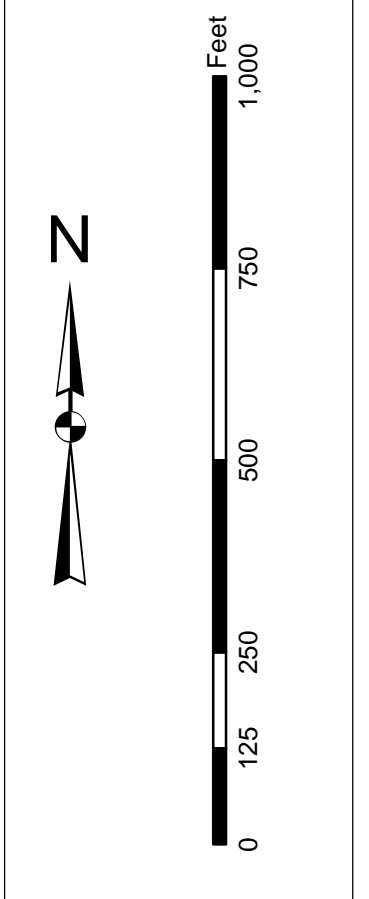
Charleston Entrance Channel Survey
 The information depicted on this map represents the results of surveys made on the dates indicated and conditions existing at that time.
 Concluded on: 08 AUG 2018
 Charleston, South Carolina





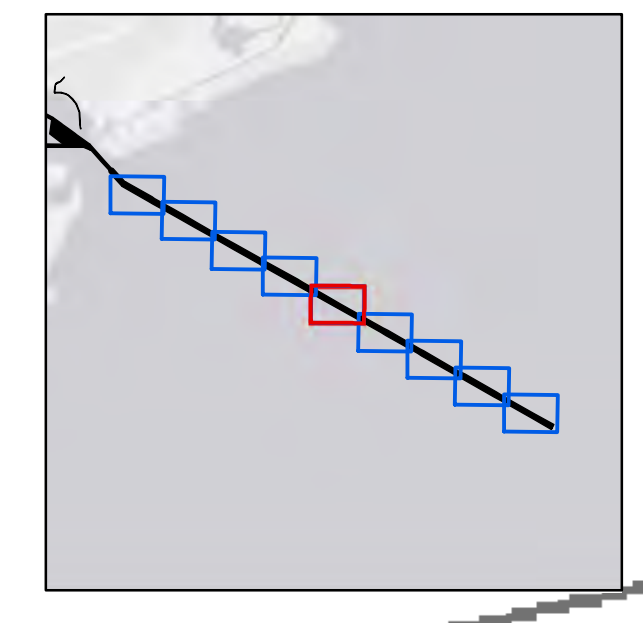
In the event that the U.S. Army Corps of Engineers, Charleston District Office, Special Data Search is made to find, locate, and identify any data that may be needed to complete this project, the user is advised that the data may be subject to change without notice and that the user is responsible for obtaining any necessary permissions from the appropriate authority.

Production Notes:
1. This map is a preliminary map.
2. The map is not to be used for navigation.
3. The map is not to be used for any other purpose.
4. The map is not to be used for any other purpose.
5. The map is not to be used for any other purpose.



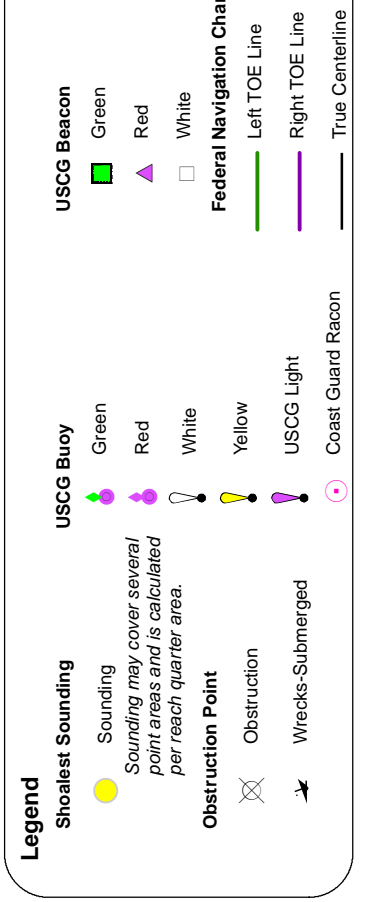
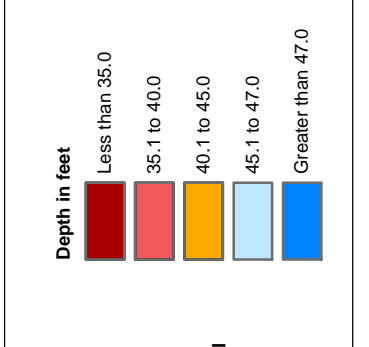
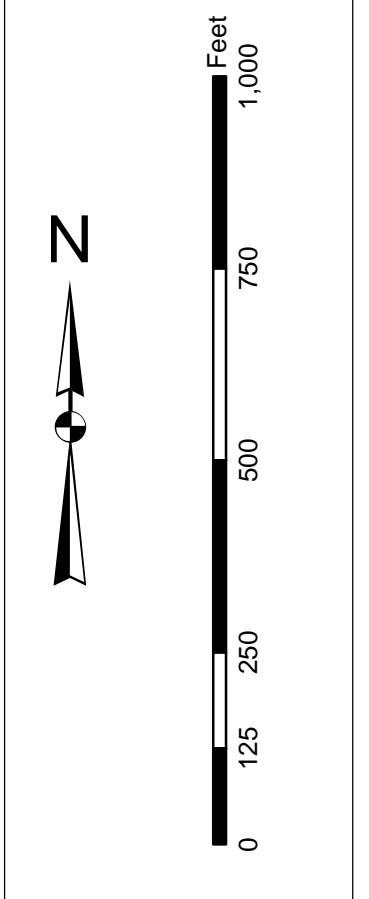
Designed By: jehydro Software v3.82	Survey Date: 08 AUG 2018	Production Date: 30 AUG 2018
Reviewed By: T. S. 10,000	Project Reference Number: 1000010	
Revised By: T. S. 10,000	Scale: 1 inch = 250 feet	Condition: CONDITION
Projection: NAD 1983 StatePlane South Carolina FIPS 3900 Feet Intl		

Charleston Entrance Channel Survey
The information depicted on this map represents the results of surveys made on the dates indicated and can only be used for general information purposes.
Concluded on: 08 AUG 2018
Charleston, South Carolina



In accordance with the U.S. Army Corps of Engineers, Charleston District Office, Special Data Stipendiary is made to the public. This map is intended for use as a general reference only and is not to be used for any other purpose. These data have been developed from the best available information and are not intended to be used for any other purpose. No warranty is made by the Corps of Engineers for any use of the data other than that for which it was intended. No liability is assumed for any errors or omissions. No liability is assumed for any use of the data other than that for which it was intended. No liability is assumed for any errors or omissions.

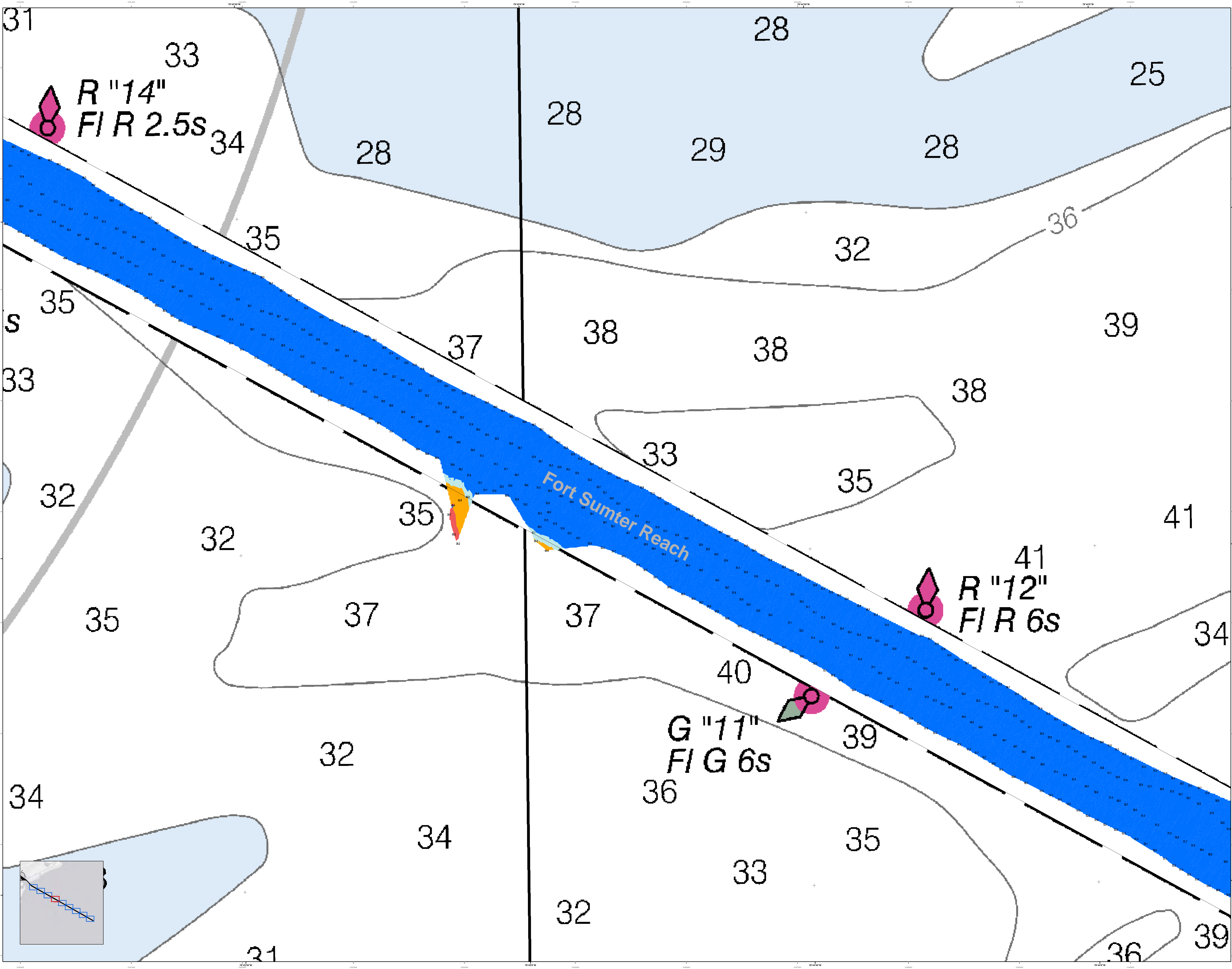
Production Notes:
1. This map is produced by the U.S. Army Corps of Engineers, Charleston District Office.
2. The data on this map were developed from the best available information and are not intended to be used for any other purpose.
3. No warranty is made by the Corps of Engineers for any use of the data other than that for which it was intended. No liability is assumed for any errors or omissions.

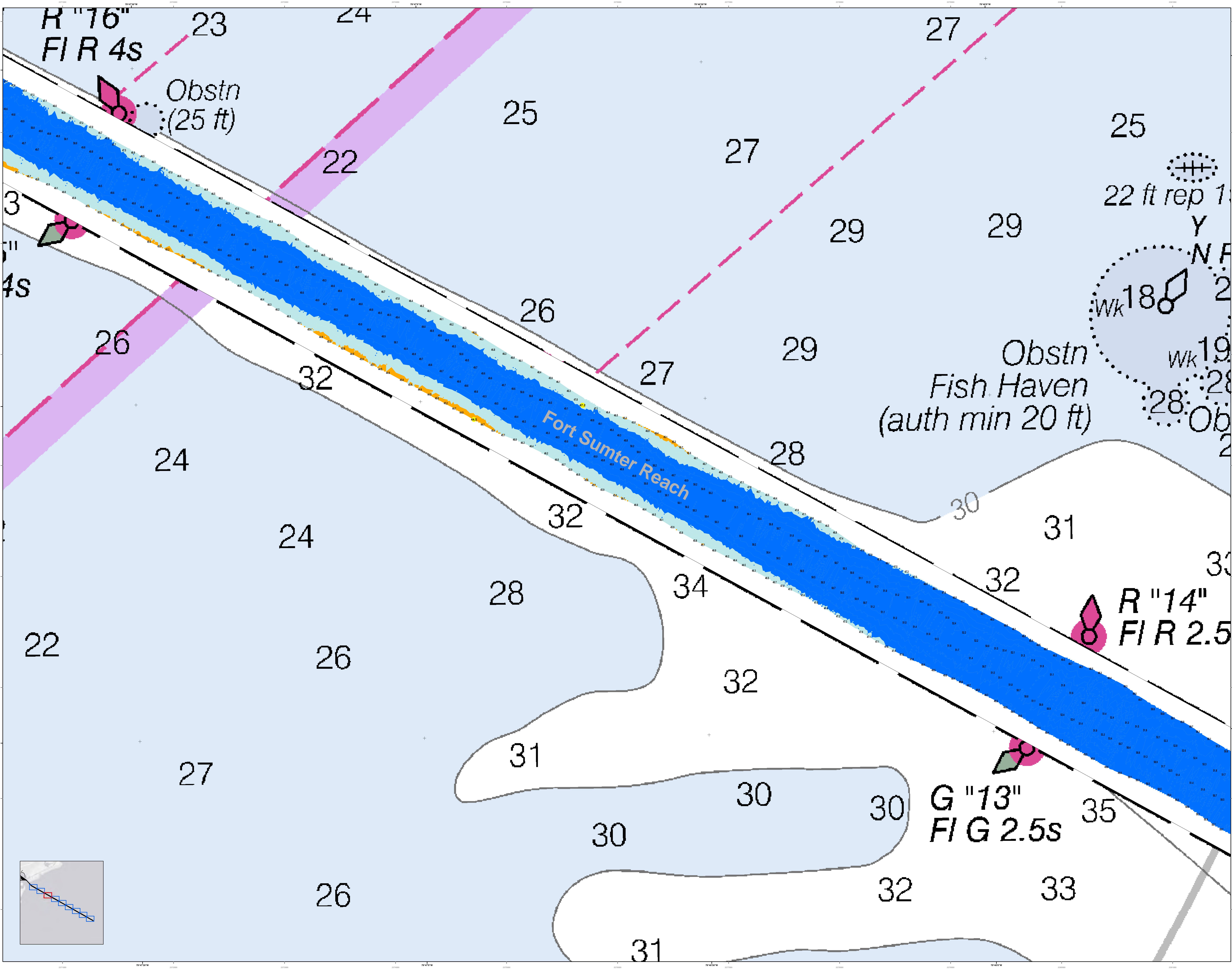


Designed By:	Hydro Software v3.82	Production Date:	08 AUG 2018 10:30 AM
Reviewed By:	1:50,000	Project Reference Number:	PC0002
Reference Scale:	1 inch = 250 feet	Survey Year:	2018
Projection:	NAD 1983 StatePlane South Carolina FIPS 3900 Feet Intl	Condition:	CONDITION

U.S. Army Corps of Engineers
Charleston District
Savannah Branch
804 MacLeod Ave
Charleston, SC 29403
CESAC/SIS/USACE/ARMY/MIL

Charleston Entrance Channel Survey
The information depicted on this map represents the results of surveys made on the dates indicated and is not intended to be used for any other purpose. No warranty is made by the Corps of Engineers for any use of the data other than that for which it was intended. No liability is assumed for any errors or omissions.





U.S. Army Corps of Engineers
Charleston District

In the event that the U.S. Army Corps of Engineers, Charleston District Office, Special Data Branch is made to publish, distribute, or disseminate this information in any form or by any means, including electronic, the user agrees to hold the U.S. Army Corps of Engineers, Charleston District Office, Special Data Branch harmless for any and all claims, damages, losses, or expenses, including reasonable attorneys' fees, that may be incurred by the user as a result of the use of this information. The user agrees to indemnify and hold the U.S. Army Corps of Engineers, Charleston District Office, Special Data Branch harmless for any and all claims, damages, losses, or expenses, including reasonable attorneys' fees, that may be incurred by the user as a result of the use of this information.

Production Notes:

1. This chart is produced primarily from the following sources:
2. Soundings are in feet and meters.
3. Obstructions are in feet and meters.
4. All depths are to Mean Lower Low Water (MLLW) unless otherwise noted.
5. Meters are rounded to the nearest millimeter.

Legend:

- Depth Soundings:**
 - 22 to 25: 1:10,000
 - 26 to 30: 1:50,000
 - 31 to 35: 1:100,000
- Obstructions:**
 - Red diamond: Obstruction
 - Red circle: Obstruction
 - Red square: Obstruction
 - Red triangle: Obstruction
- Navigational Aids:**
 - Red diamond: Buoy
 - Red circle: Buoy
 - Red square: Buoy
 - Red triangle: Buoy
- Channel Markings:**
 - Dashed pink line: Channel Boundary
 - Solid black line: Channel Boundary
 - Thin black line: Channel Boundary
 - Thin grey line: Channel Boundary

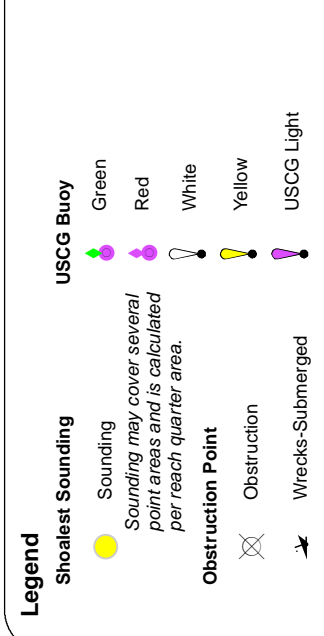
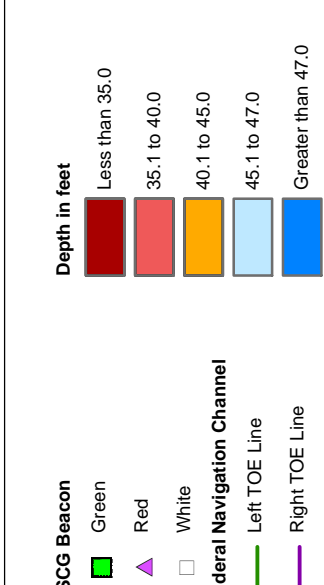
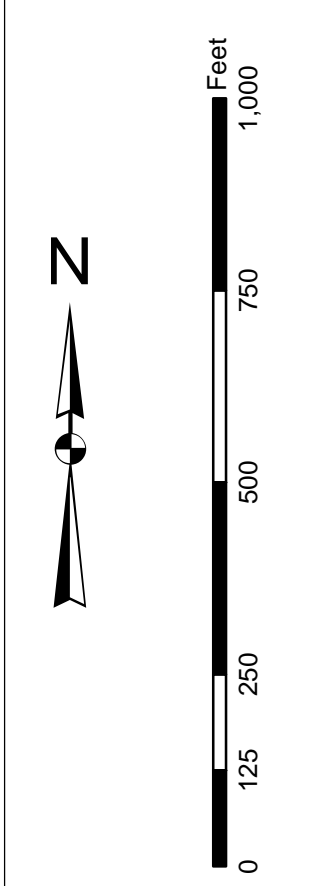
Designed By:	Hydro Software v3.82	Production Date:	08 AUG 2018
Reviewed By:	13000	Project Reference Number:	13000
Reference Scale:	1 inch = 250 feet	Section:	CONDITION
Projection:	NAD 1983 StatePlane South Carolina FIPS 3900 Feet Int		

Charleston Entrance Channel Survey
The information depicted on this map represents the results of surveys made on the dates indicated and can only be used for the purposes for which it was prepared. It is not to be used for general navigation or other purposes without the approval of the U.S. Army Corps of Engineers, Charleston District Office. Concluded on: 08 AUG 2018
Charleston, South Carolina

SHEET REFERENCE NUMBER: C002
SHEET 7 OF 9

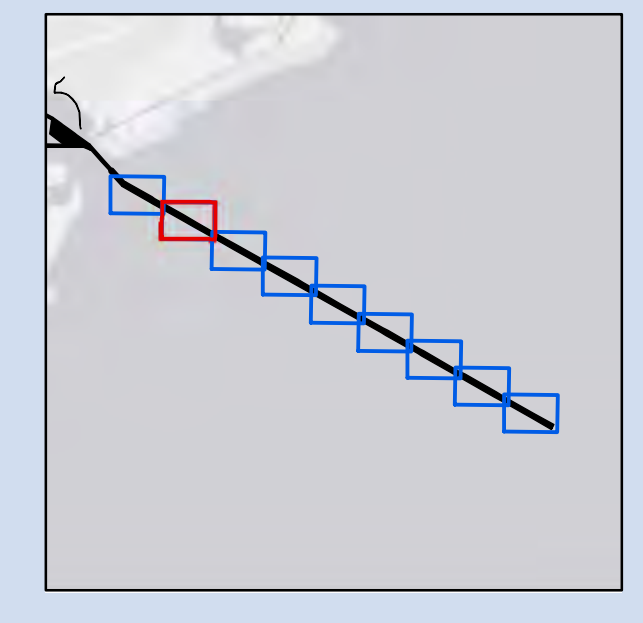
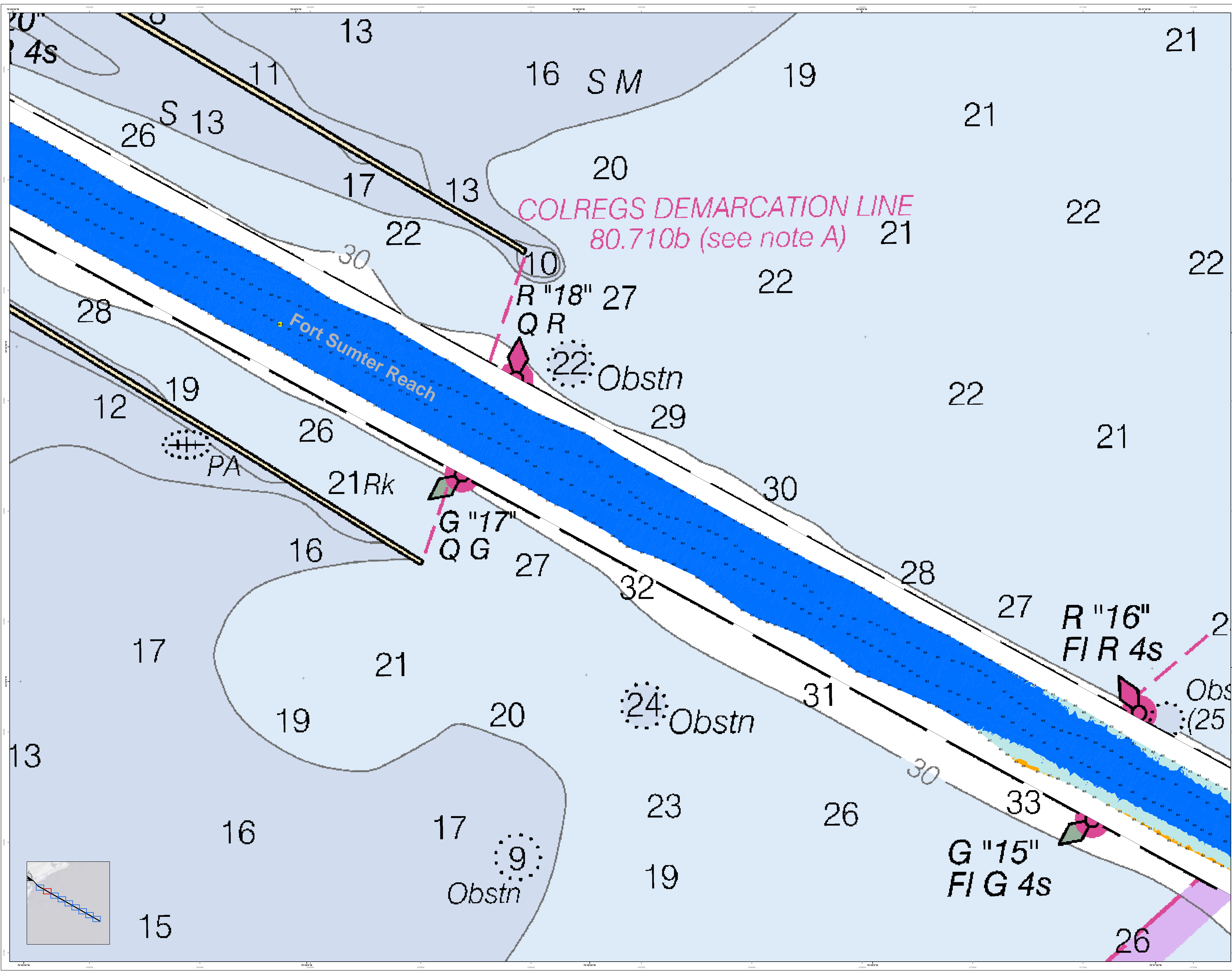
In the event that the U.S. Army Corps of Engineers, Charleston District Office, Special Data Branch is unable to locate, identify, or verify the location of any monument or marker shown on this map, the user of this map is advised that the location of such monument or marker is not guaranteed by the U.S. Army Corps of Engineers. The user of this map is advised that the location of such monument or marker is not guaranteed by the U.S. Army Corps of Engineers. The user of this map is advised that the location of such monument or marker is not guaranteed by the U.S. Army Corps of Engineers.

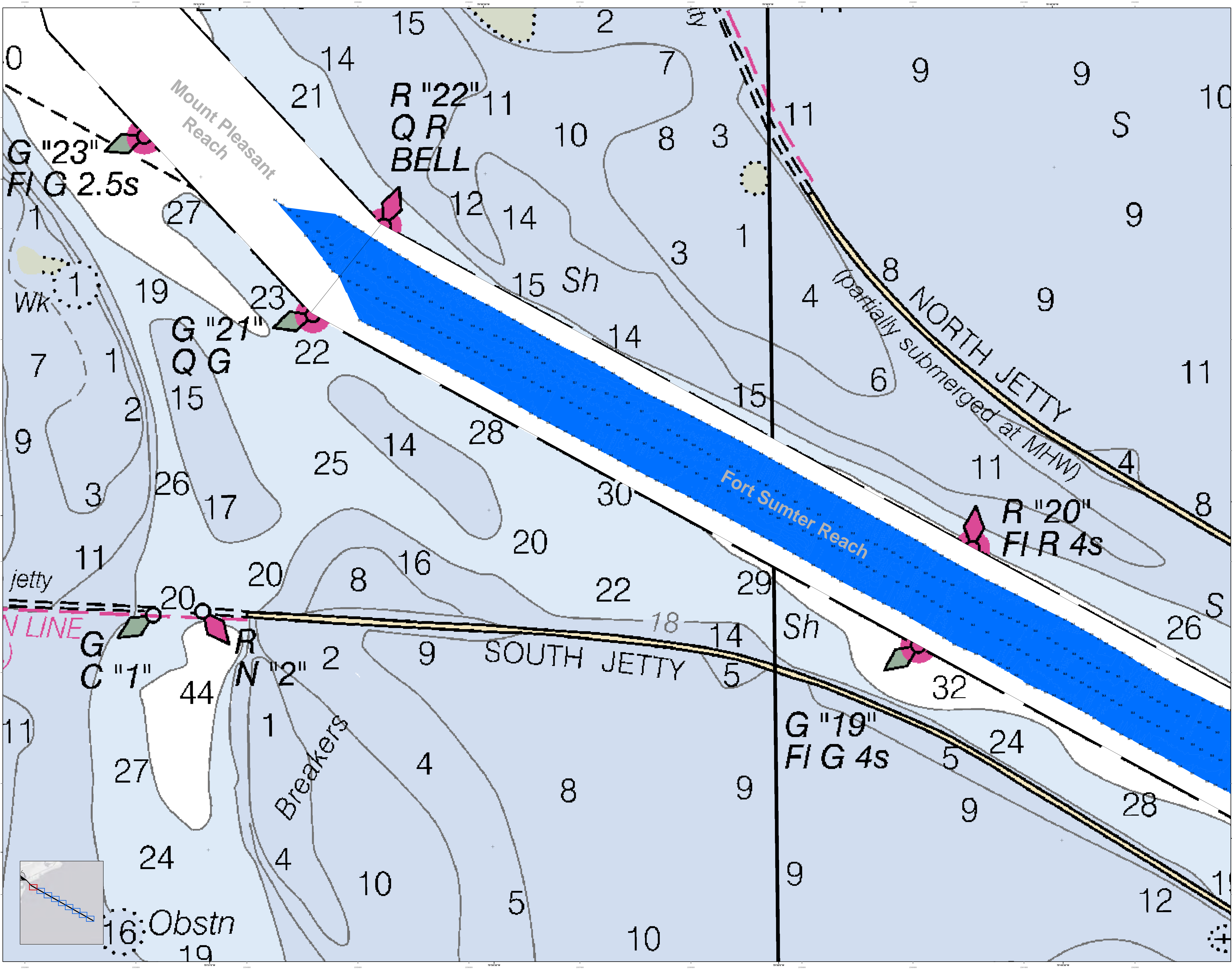
Production Notes:
1. This map was produced using the following data:
a. Survey data from the project.
b. Bathymetry data from the project.
c. Hydrographic data from the project.
d. Other data as indicated on the map.



Designed By:	Hydro Software v3.02	Production Date:	08 AUG 2018
Reviewed By:	1:50,000	Project Reference Number:	18010010
Reference Scale:	1 inch = 250 feet	Survey Type:	CONDITION
Projection:	NAD 1983 StatePlane South Carolina FIPS 3900 Feet Int		

Charleston Entrance Channel Survey
The information depicted on this map represents the results of surveys made on the dates indicated and can only be used for general information purposes.
Concluded on: 08 AUG 2018
Charleston, South Carolina





U.S. Army Corps of Engineers
Charleston District

Production Notes:

- This chart is produced in accordance with the provisions of the Hydrographic Survey Act of 1908.
- The information depicted on this chart represents the results of surveys made on the dates indicated and is not intended to be used for navigation.
- There are no known obstructions to navigation in the area shown on this chart.
- The information on this chart is based on the latest available data and is subject to change without notice.
- The information on this chart is based on the latest available data and is subject to change without notice.
- The information on this chart is based on the latest available data and is subject to change without notice.

Legend:

- Soundings: 0-10, 11-20, 21-30, 31-40, 41-50
- Obstructions: Obstruction, Obstruction
- Breakers: Breaker, Breaker
- Jetty: Jetty, Jetty
- Channel: Channel, Channel
- Shoal: Shoal, Shoal
- Bank: Bank, Bank
- Ground: Ground, Ground
- Light: Light, Light
- Daymark: Daymark, Daymark
- Structure: Structure, Structure
- Other: Other, Other

Scale: 1 inch = 250 feet

North Arrow: N

Production Date: 08 AUG 2018

Project Reference Number: 130300

Scale: 1 inch = 250 feet

Condition: CONDITION

U.S. Army Corps of Engineers
Charleston District
Savannah Branch
Charleston, SC 29405

Charleston Entrance Channel Survey
The information depicted on this map represents the results of surveys made on the dates indicated and is not intended to be used for navigation. The information on this chart is based on the latest available data and is subject to change without notice.

Charleston, South Carolina

SHEET REFERENCE NUMBER
C002

SHEET 9 OF 9