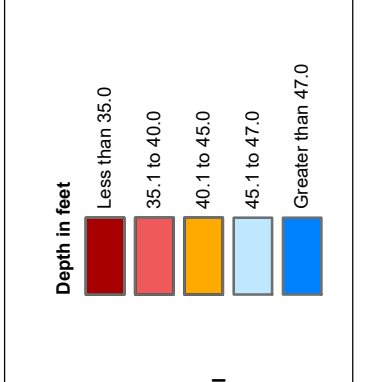
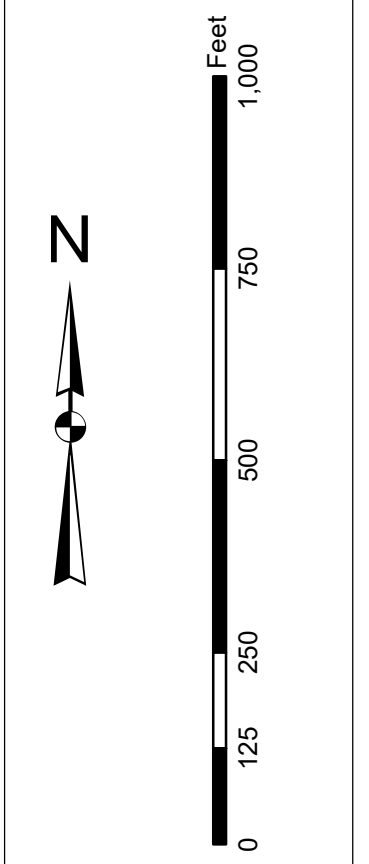


In accordance with the U.S. Army Corps of Engineers, Charleston District Office, Sound Data Sheets are made to uniform standards. The information depicted on this map represents the results of surveys made on the dates indicated and can only be used for general information. It is not intended to be used for navigation. The information is not intended to be used for navigation. The information is not intended to be used for navigation.

Production Notes:

1. This chart is produced electronically.
2. The chart is produced electronically.
3. The chart is produced electronically.



Legend

Soundings: 2.5s, 5.0s, 10.0s, 15.0s, 20.0s, 25.0s, 30.0s, 35.0s, 40.0s, 45.0s, 50.0s, 55.0s, 60.0s, 65.0s, 70.0s, 75.0s, 80.0s, 85.0s, 90.0s, 95.0s, 100.0s

Obstructions: Obstruction (Obstn), Obstruction (Obstn)

Other: Obstruction (Obstn), Obstruction (Obstn)

Designed By: J. H. [Name]	Survey Date: 04 April 2019	Production Date: 12 April 2019
Reviewed By: J. H. [Name]	Project Reference Number: [Number]	Project Reference Number: [Number]
Scale: 1" = 250 feet	Scale: 1" = 250 feet	Scale: 1" = 250 feet
Projection: NAD 1983 StatePlane South Carolina FIPS 3900 Feet Intl	Projection: NAD 1983 StatePlane South Carolina FIPS 3900 Feet Intl	Projection: NAD 1983 StatePlane South Carolina FIPS 3900 Feet Intl

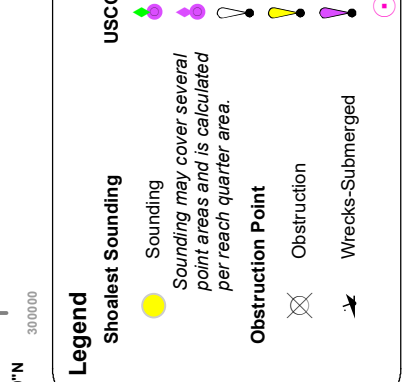
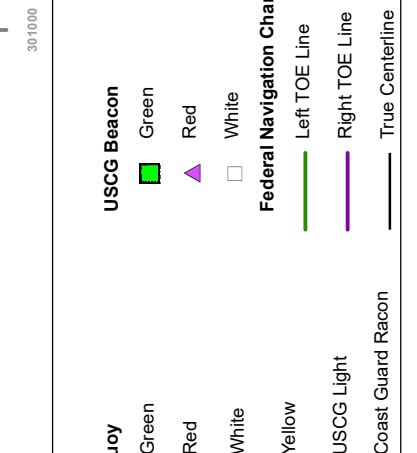
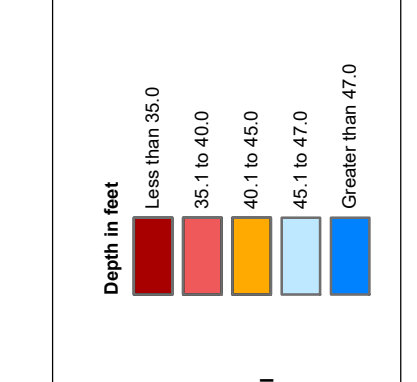
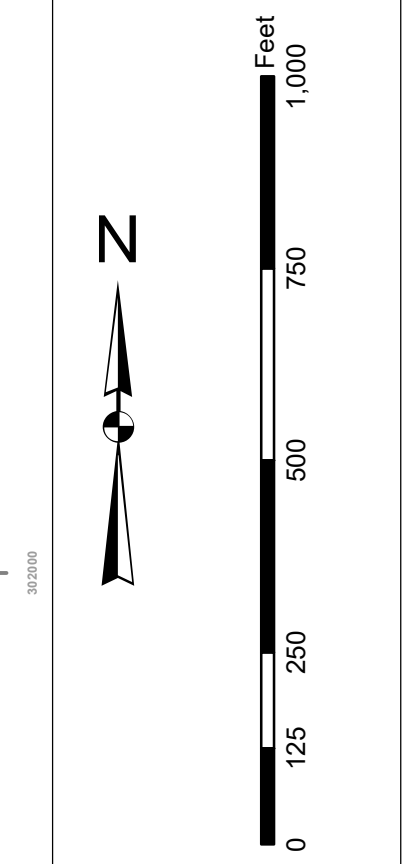
Charleston Entrance Channel Survey
The information depicted on this map represents the results of surveys made on the dates indicated and can only be used for general information. It is not intended to be used for navigation. The information is not intended to be used for navigation.

Concluded on: 4 April 2019

Charleston, South Carolina

In the event that the U.S. Army Corps of Engineers, Charleston District Office, Special Data Branch is unable to contact the contractor, the contractor shall be responsible for providing the necessary information to the District Office. The contractor shall be responsible for providing the necessary information to the District Office. The contractor shall be responsible for providing the necessary information to the District Office.

Production Notes:
1. This map is for informational purposes only.
2. The contractor shall be responsible for providing the necessary information to the District Office.
3. The contractor shall be responsible for providing the necessary information to the District Office.

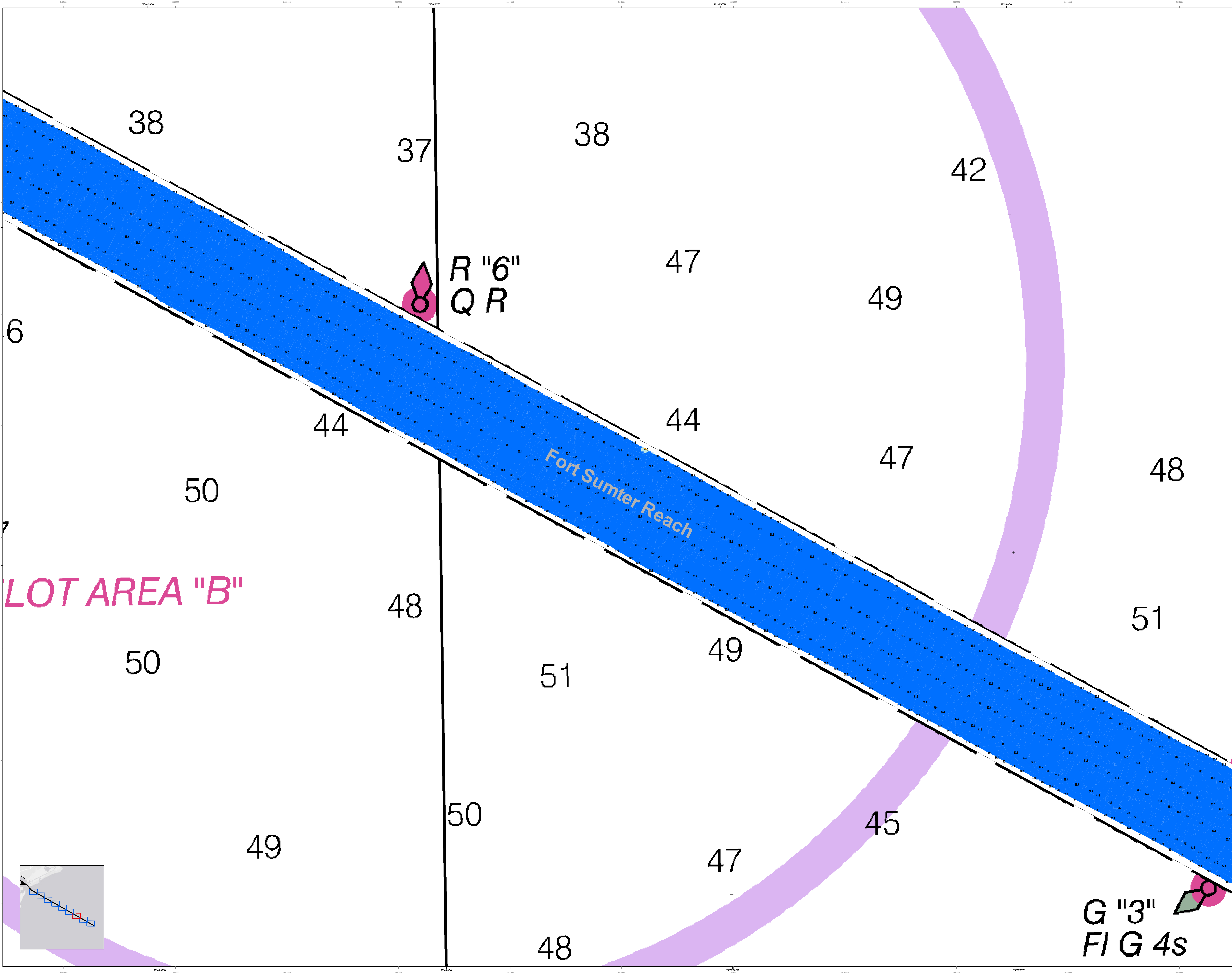


Designed By:	Hydro Software v3.82	Survey Date:	12 April 2019
Reviewed By:	1:10,000	Project Reference Number:	PC00010
Reference Scale:	1 inch = 250 feet	Survey Type:	CONDITION
Projection:	NAD 1983 StatePlane South Carolina FIPS 3900 Feet Intl		

U.S. Army Corps of Engineers
Charleston District
Savannah Branch
Charleston, SC 29405
CESAC-GIS@USACE.ARMY.MIL

Charleston Entrance Channel Survey
The information depicted on this map represents the results of surveys made on the dates indicated and can only be used for general information purposes.
Concluded on: 4 April 2019
Charleston, South Carolina

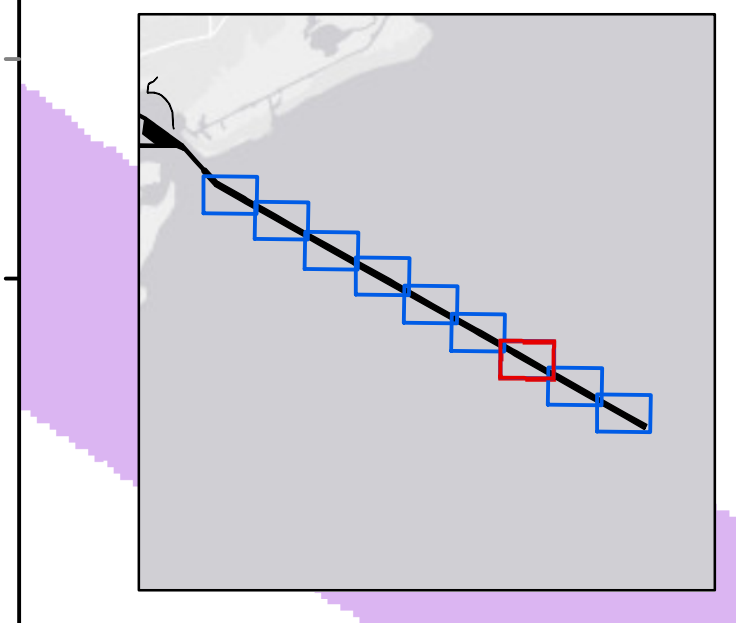
SHEET REFERENCE NUMBER
C002
SHEET 3 OF 9

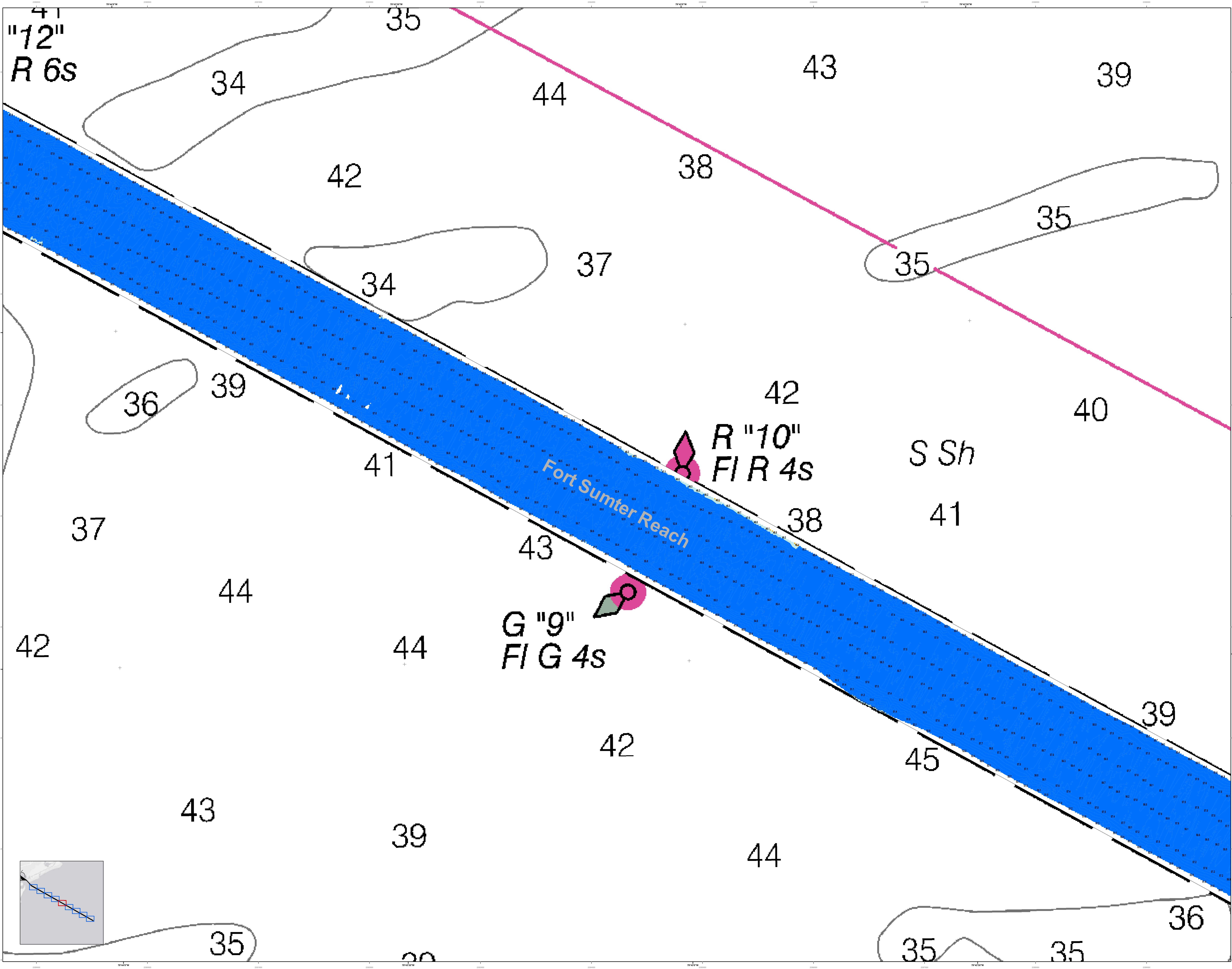


LOT AREA "B"

R "6"
QR

G "3"
FIG 4s





41
"12"
R 6s

R "10"
FIR 4s

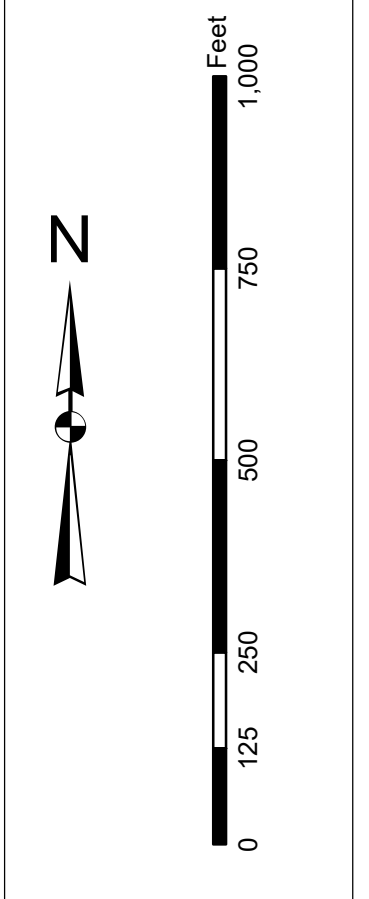
G "9"
FIG 4s

Fort Sumter Reach

S Sh

In the event that the U.S. Army Corps of Engineers, Charleston District Office, Special Data Search is made to find, locate, and use the information on this map, the user should be aware that the data on this map were developed from the best available information at the time of the survey. The user should be aware that the data on this map were developed from the best available information at the time of the survey. The user should be aware that the data on this map were developed from the best available information at the time of the survey.

Production Notes:
1. This map is for informational purposes only.
2. The data on this map were developed from the best available information at the time of the survey.
3. The data on this map were developed from the best available information at the time of the survey.



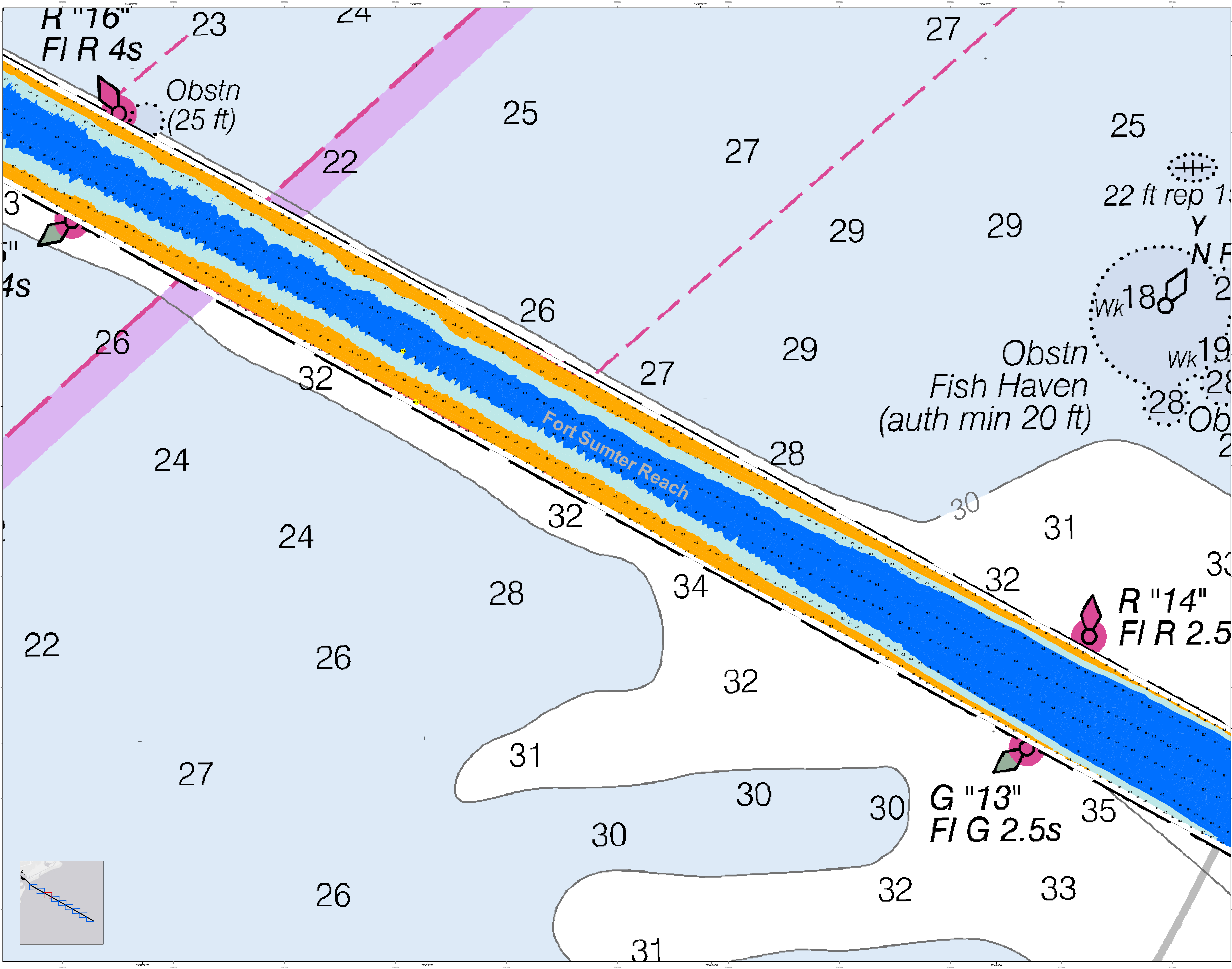
Legend

Color Key:
 Blue: Water
 Green: Wetland
 Yellow: Shaded Relief
 Pink: Survey Point
 Black: Contour Line
 Dashed: Easement
 Dotted: Right-of-Way

Symbol Key:
 Pink diamond: Survey Point
 Green diamond: Survey Point
 Black line: Contour Line
 Dashed line: Easement
 Dotted line: Right-of-Way

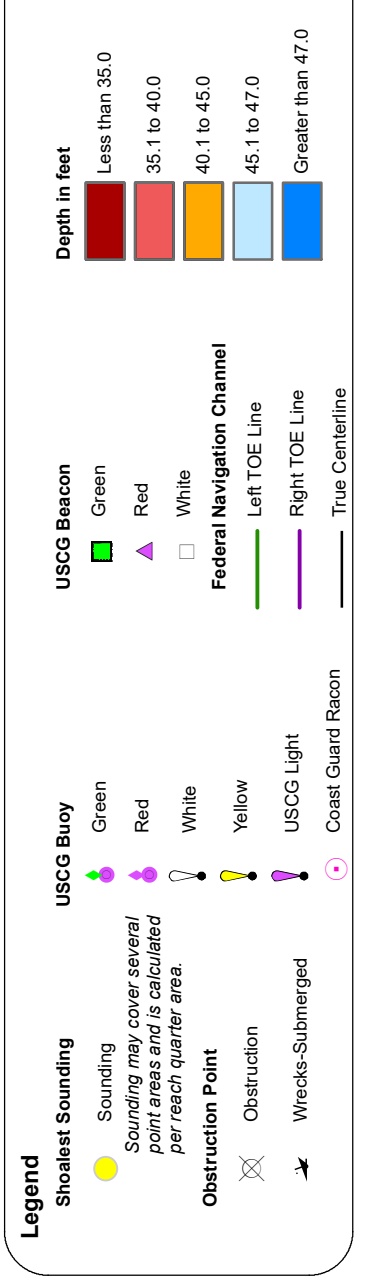
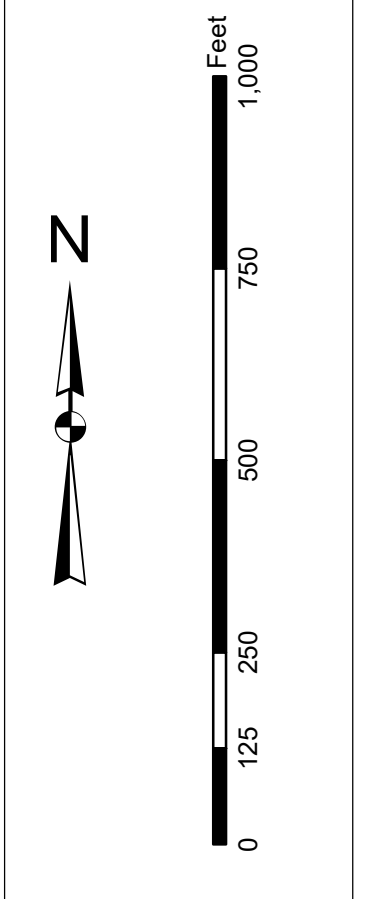
Designed By: J. H. [Name]	Reviewed By: J. H. [Name]	Produced By: J. H. [Name]	Production Date: 12 April 2019
U.S. Army Corps of Engineers Charleston District Savannah Branch Birmingham Ave Charleston, SC 29405	Project Reference Number: 13000 Survey Cycle: CONDITION	Scale: 1 inch = 250 feet Projection: NAD 1983 StatePlane South Carolina FIPS 3200 Feet Int	

Charleston Entrance Channel Survey
 The information depicted on this map represents the results of surveys made on the dates indicated and can only be used for the purposes for which it was prepared. The information on this map was developed from the best available information at the time of the survey. The information on this map was developed from the best available information at the time of the survey.
 Concluded on: 4 April 2019
 Charleston, South Carolina



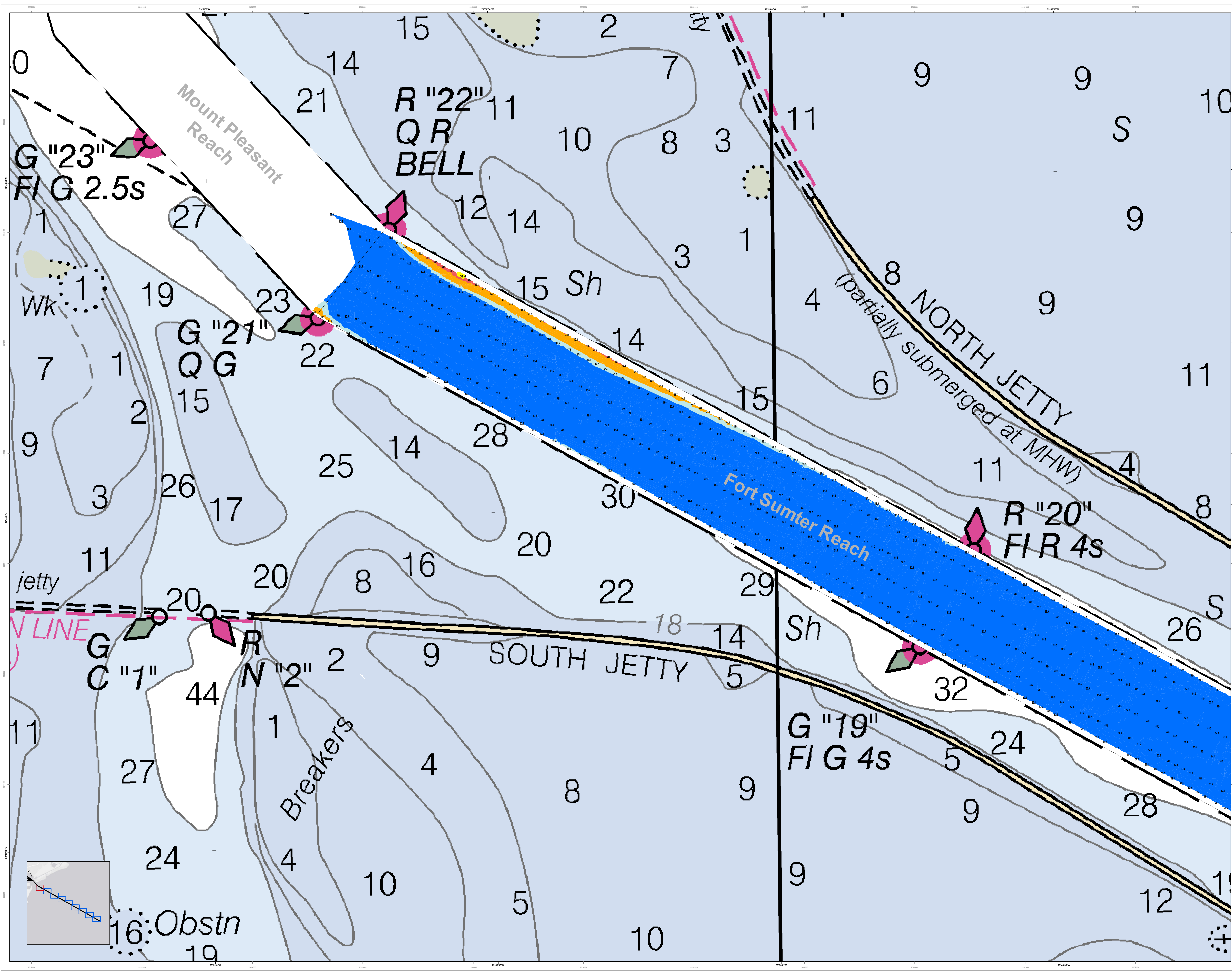
In the event of a U.S. Army Corps of Engineers, Charleston District Office, Special Data Sheet, the data shown on this chart is for information only and does not constitute a warranty of any kind. The user assumes all responsibility for the use of the data shown on this chart. The data shown on this chart is based on the most current information available to the Corps of Engineers. The data shown on this chart is subject to change without notice. The user is encouraged to use all prudent safety measures.

Production Notes:
1. This chart is produced by the Charleston District Office.
2. The data shown on this chart is based on the most current information available to the Corps of Engineers.
3. The data shown on this chart is subject to change without notice.
4. The user is encouraged to use all prudent safety measures.



Designed By:	Survey Date:	Production Date:
Reviewed By:	Project Reference Number:	
Scale:	Scale:	Scale:
Projection:	Projection:	Projection:

Charleston Entrance Channel Survey
The information depicted on this map represents the results of surveys made on the dates indicated and is not intended to be used for navigation. The user is encouraged to use all prudent safety measures.
Concluded on: 4 April 2019
Charleston, South Carolina



U.S. Army Corps of Engineers
Charleston District

Production Notes:

- This chart is produced electronically from the digital hydrographic data.
- There have been no changes to the data since the last update.
- There have been no changes to the data since the last update.
- There have been no changes to the data since the last update.
- There have been no changes to the data since the last update.

Legend:

- Soundings:** Depth soundings (e.g., 1, 2, 3, 4, 5, 7, 8, 9, 10, 11, 12, 14, 15, 16, 17, 18, 19, 20, 21, 22, 23, 24, 25, 26, 27, 28, 29, 30, 32, 44)
- Obstructions:** Obstructions (e.g., 16, 19)
- Navigation Aids:** Green buoy (G), Red buoy (R), Lighted buoy (FI, LR, LRG, LRH, LRG, LRH)
- Shoals:** Shoals (Sh)
- Breakers:** Breakers
- Other:** V LINE, WK 1

Scale: 1 inch = 250 feet

Projection: NAD 1983 StatePlane South Carolina FIPS 3200 Feet Int

Designated By: U.S. Army Corps of Engineers, Charleston District, South Carolina

Reviewed By: U.S. Army Corps of Engineers, Charleston District, South Carolina

Scale: 1 inch = 250 feet

Production Date: 12 April 2019

Project Reference Number: C002

Survey Type: CONDITION

Chart Title: Charleston Entrance Channel Survey

Chart Number: C002

Sheet Reference Number: C002

Sheet 9 of 9