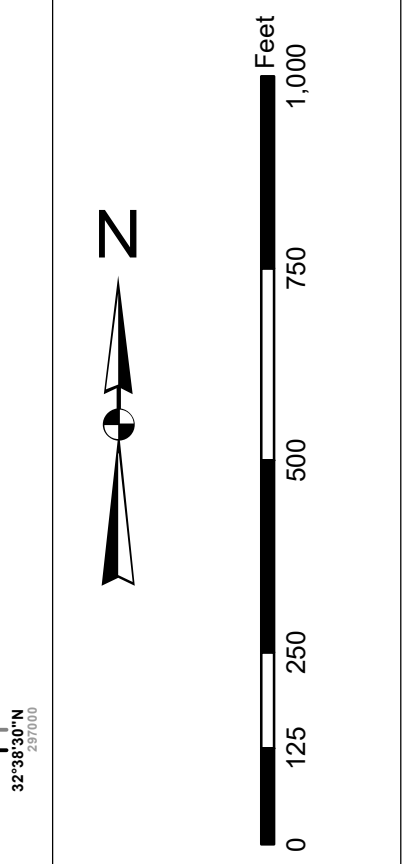




In its capacity as the U.S. Army Corps of Engineers, Charleston District Office, Special Data Branch has made this report, including but not limited to, the data and information contained herein, available for use by other agencies and individuals. The data and information contained herein are for informational purposes only and are not intended to be used for any other purpose. The data and information contained herein are not intended to be used for any other purpose. The data and information contained herein are not intended to be used for any other purpose.

Production Notes:  
1. This map is a photographic reproduction of the original data.  
2. The data was collected by the Charleston District Office.  
3. The data was collected by the Charleston District Office.  
4. The data was collected by the Charleston District Office.

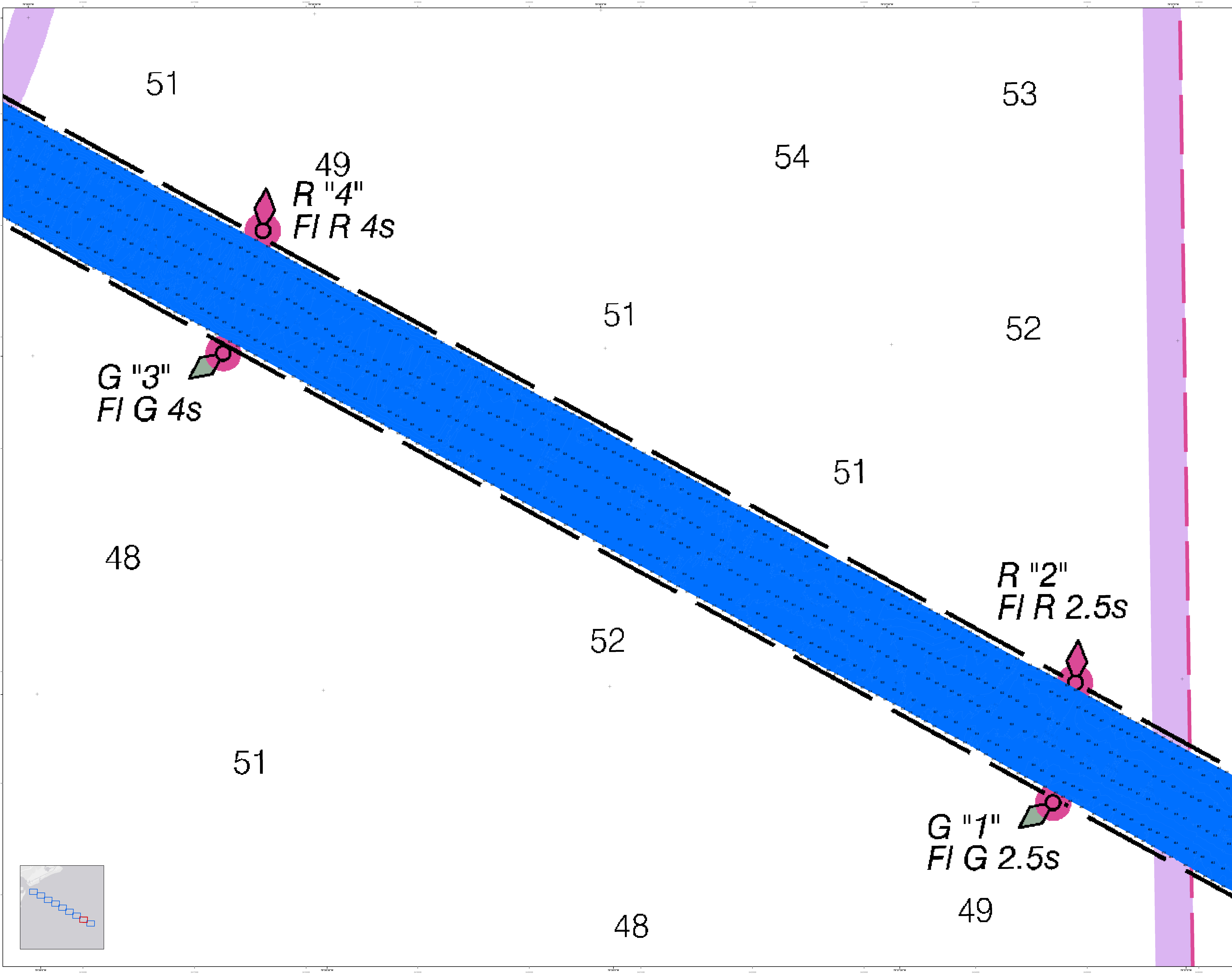


Legend	Symbol	Description
Channel	Blue hatched area	Channel
Bank	Black dashed line	Bank
Structure	Green triangle	Structure
Point	Pink diamond	Point
Utility	Yellow dashed line	Utility
Boundary	Black solid line	Boundary
Survey	Black crosshair	Survey

Designed By:	lehydo Software v3.82	Survey Date:	21 MAY 2020	Production Date:	27 MAY 2020
Reviewed By:	ABSOLUTE STATE	Project Reference Number:	PC00010	Project Reference Number:	PC00010
Revised By:	1:50,000	Scale:	1 inch = 250 feet	Scale:	1 inch = 250 feet
Revised By:	1:50,000	Scale:	1 inch = 250 feet	Scale:	1 inch = 250 feet
Revised By:	1:50,000	Scale:	1 inch = 250 feet	Scale:	1 inch = 250 feet

**Charleston Entrance Channel Survey**  
The information depicted on this map represents the results of surveys made on the dates indicated and can only be used for general information purposes. The data and information contained herein are not intended to be used for any other purpose. The data and information contained herein are not intended to be used for any other purpose. The data and information contained herein are not intended to be used for any other purpose.

Concluded on: 21 MAY 2020  
Charleston, South Carolina



51

53

49  
R "4"  
FI R 4s

54

51

52

G "3"  
FI G 4s

51

48

R "2"  
FI R 2.5s

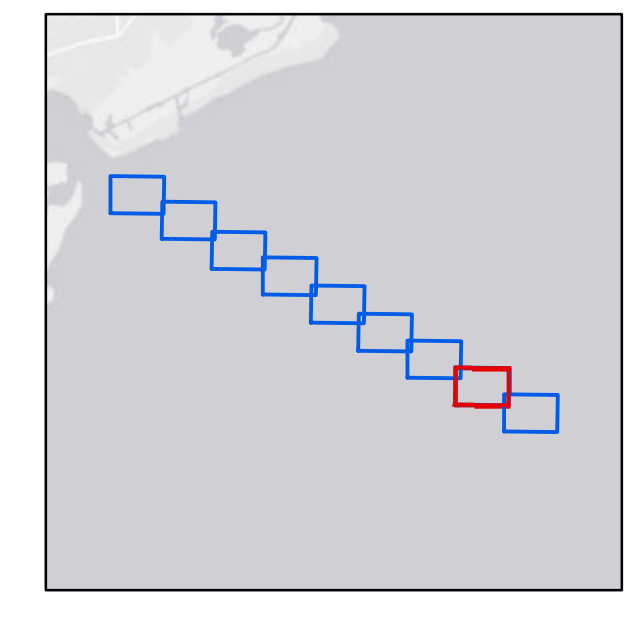
52

51

G "1"  
FI G 2.5s

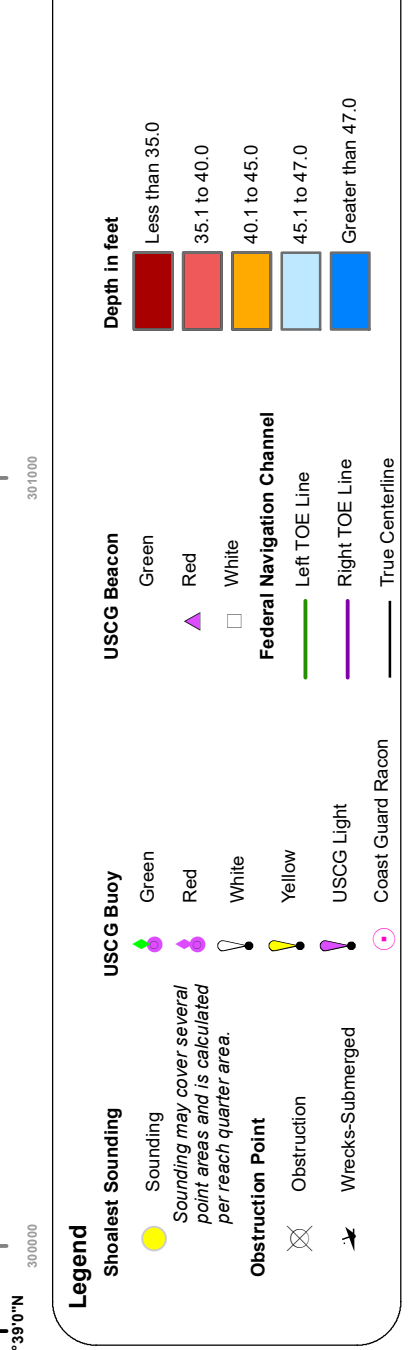
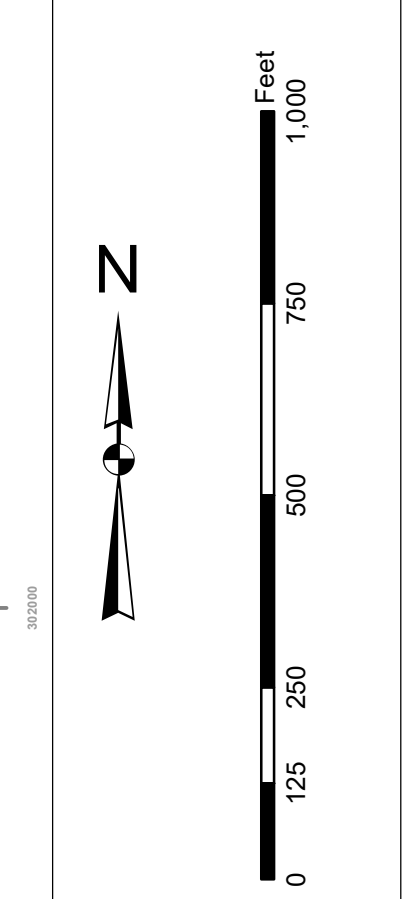
48

49



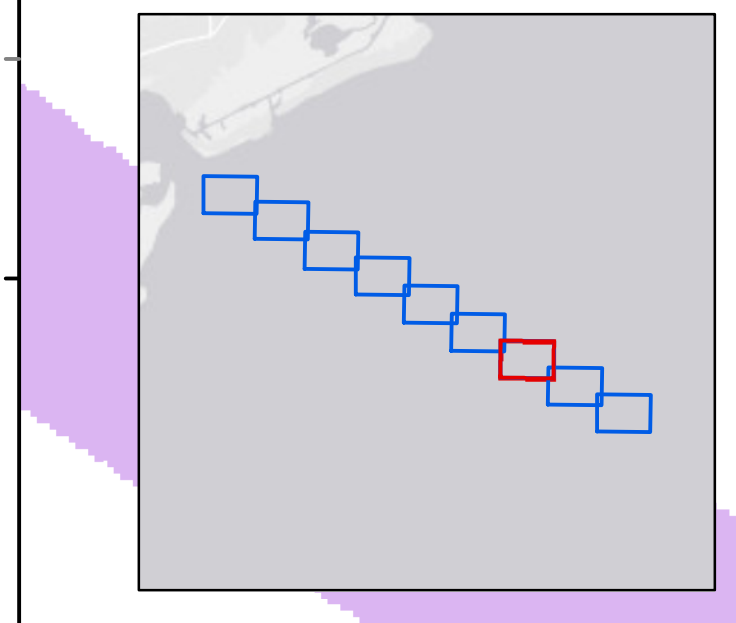
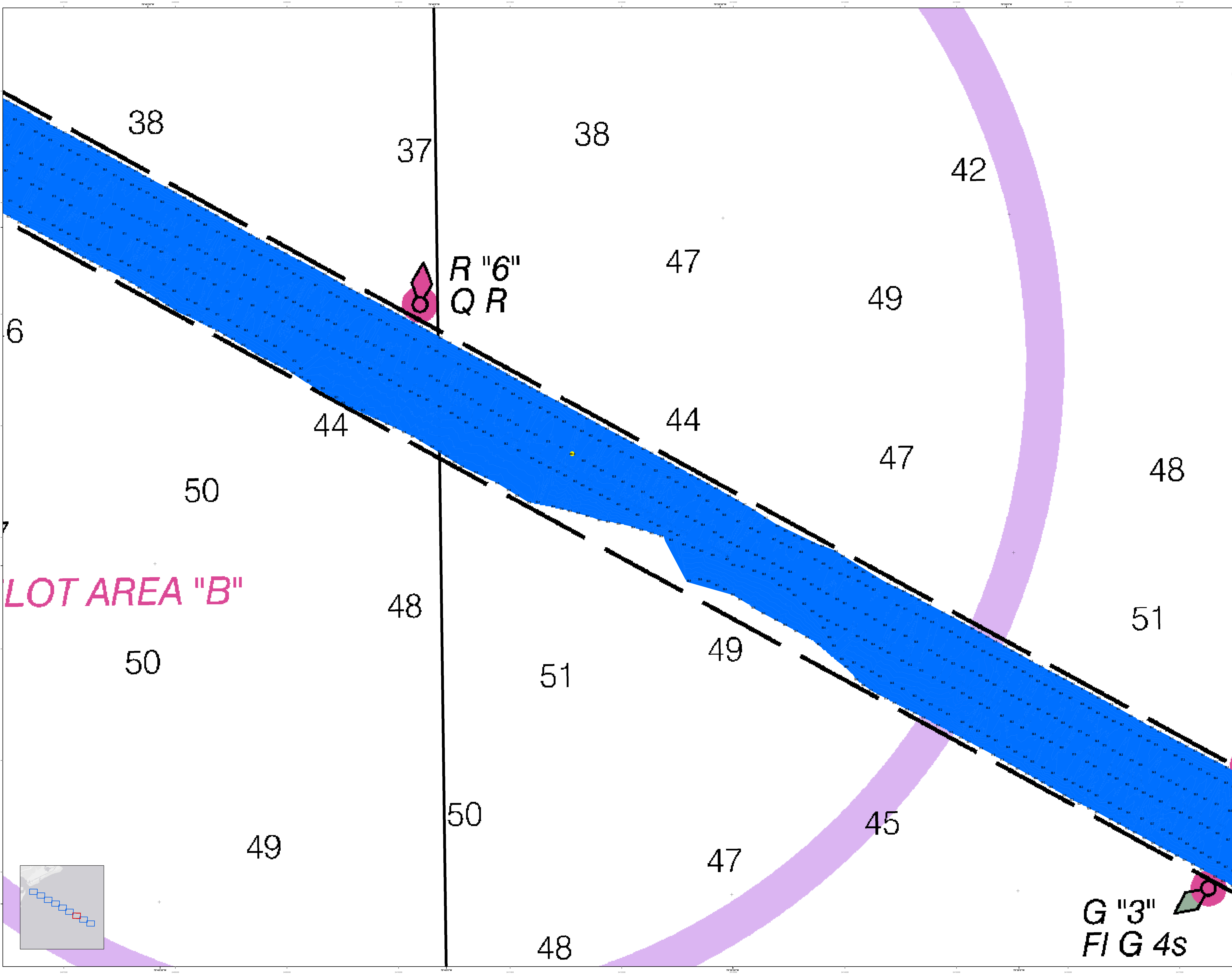
In its capacity as the U.S. Army Corps of Engineers, Charleston District Office, Special Data Branch, has prepared this map for the purpose of providing information to the public. This map is not intended to be used for any purpose other than that for which it was prepared. It is not intended to be used for any purpose other than that for which it was prepared. It is not intended to be used for any purpose other than that for which it was prepared.

Production Notes:  
1. This map is a photographic reproduction of a map prepared by the Charleston District Office.  
2. All measurements are in feet and inches.  
3. All measurements are to the center of the channel.  
4. All measurements are to the center of the channel.  
5. All measurements are to the center of the channel.  
6. All measurements are to the center of the channel.



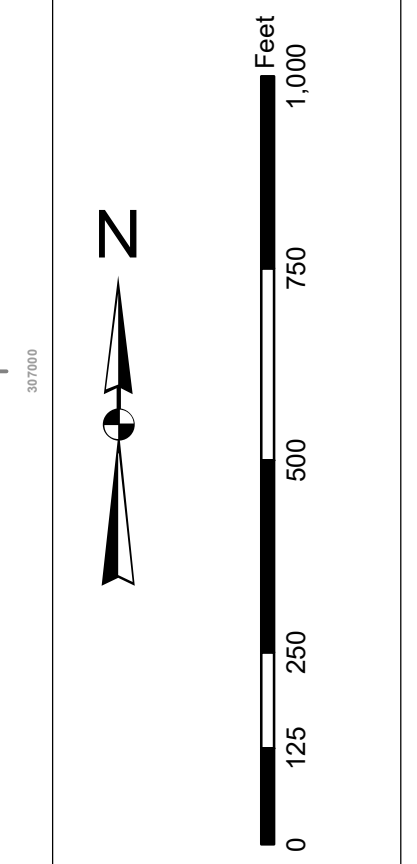
Designed By:	Survey Date:	Production Date:
Reviewed By:	Project Reference Number:	
Scale:	Scale:	Scale:
Projection:	Projection:	Projection:

Charleston Entrance Channel Survey  
The information depicted on this map represents the results of surveys made on the dates indicated and can only be used for general information purposes. It is not intended to be used for any purpose other than that for which it was prepared. It is not intended to be used for any purpose other than that for which it was prepared. It is not intended to be used for any purpose other than that for which it was prepared.



In its capacity as the U.S. Army Corps of Engineers, Charleston District Office, Special Data Branch has made this project, including but not limited to, the information on this map, available for use by other agencies. These data have been developed from the best available information and are not intended to be used for navigation. Users are encouraged to use all prudent safety measures.

**Production Notes:**  
1. This is a preliminary map.  
2. Users are encouraged to use all prudent safety measures.  
3. Users are encouraged to use all prudent safety measures.  
4. Users are encouraged to use all prudent safety measures.  
5. Users are encouraged to use all prudent safety measures.



**Legend**

**Dark Water**  
 - Blue: Dark Water  
 - Yellow: Shallow Water  
 - Green: Intermediate Water  
 - Light Blue: Very Shallow Water

**USGS Bathy**  
 - Blue: Bathymetry  
 - Yellow: Channel  
 - Green: Shoal  
 - Red: Sand  
 - Purple: Federal Navigational Channel  
 - Orange: State Navigational Channel  
 - Light Blue: State Waterway  
 - Dark Blue: State Waterway

**USGS Elevation**  
 - Brown: Contour  
 - Green: Spot Elevation  
 - Yellow: Spot Elevation  
 - Red: Spot Elevation  
 - Blue: Spot Elevation

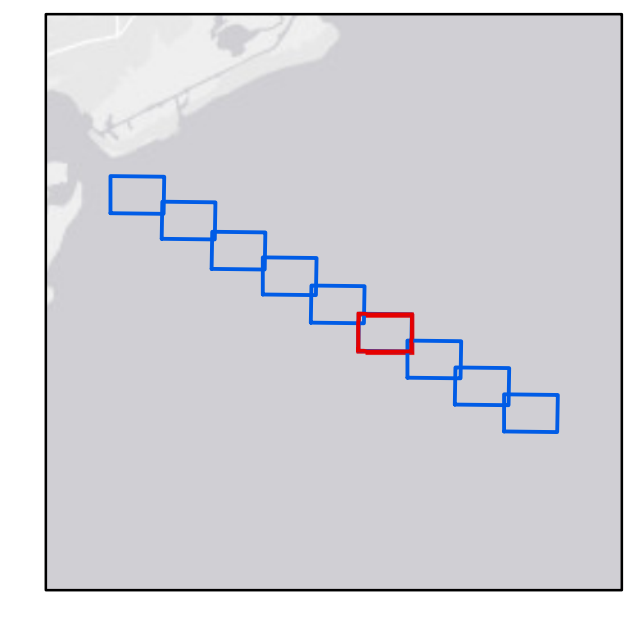
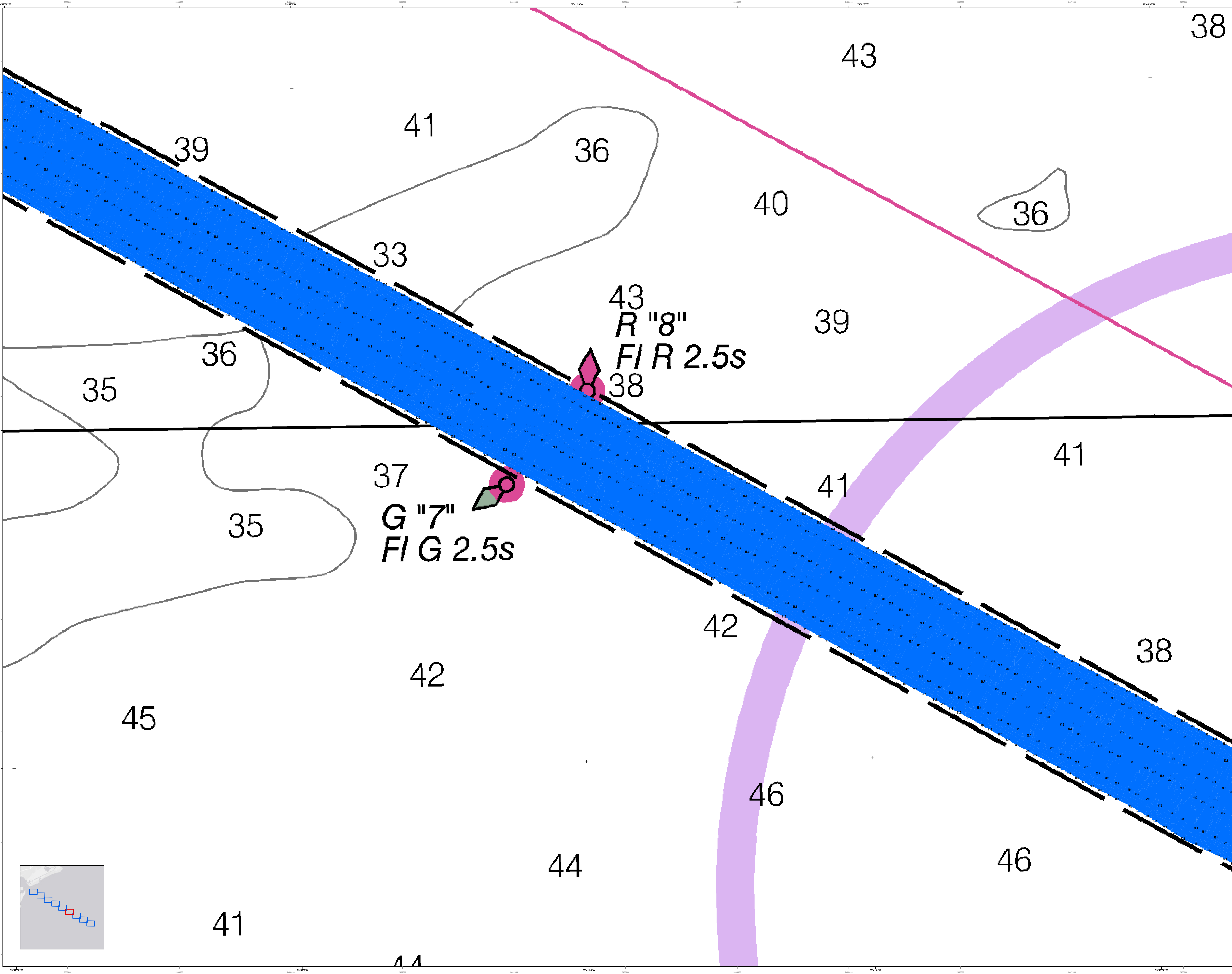
**USGS Hydro**  
 - Blue: Channel  
 - Yellow: Channel  
 - Green: Channel  
 - Red: Channel  
 - Purple: Channel  
 - Orange: Channel  
 - Light Blue: Channel  
 - Dark Blue: Channel

**USGS Structure**  
 - Yellow: Structure  
 - Green: Structure  
 - Red: Structure  
 - Purple: Structure  
 - Orange: Structure  
 - Light Blue: Structure  
 - Dark Blue: Structure

**USGS Obstruction**  
 - Yellow: Obstruction  
 - Green: Obstruction  
 - Red: Obstruction  
 - Purple: Obstruction  
 - Orange: Obstruction  
 - Light Blue: Obstruction  
 - Dark Blue: Obstruction

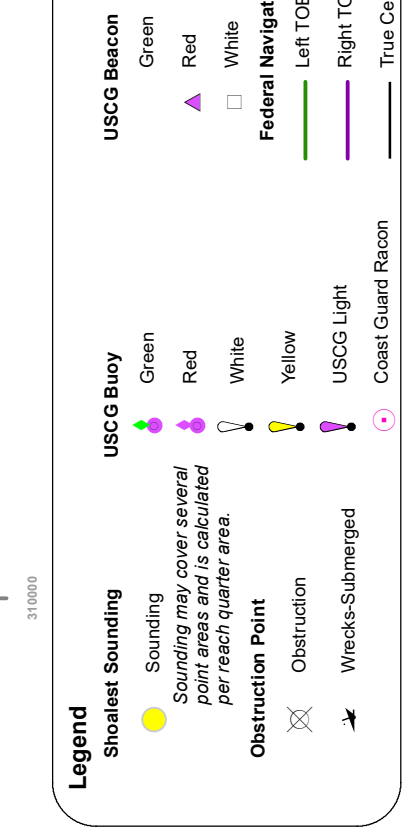
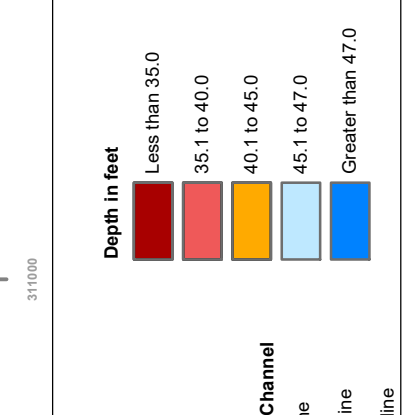
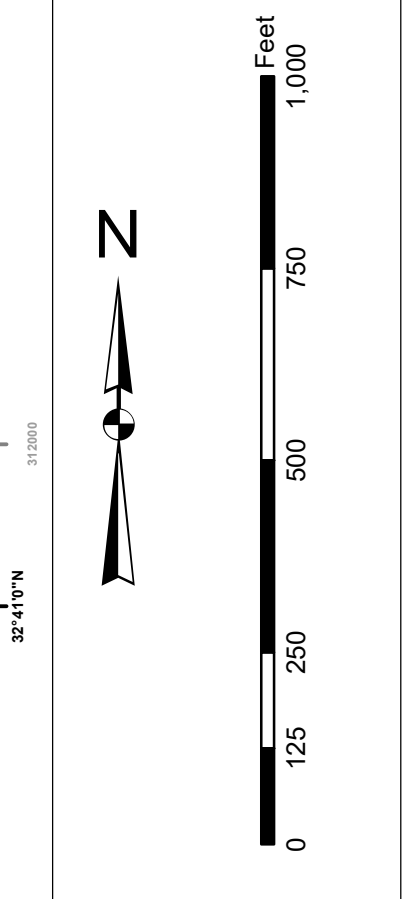
Designed By: Hydro Software v3.82	Survey Date: 21 MAY 2020	Production Date: 27 MAY 2020
Reviewed By: 1:50,000	Project Reference Number: PC00010	
Revised By: 1 inch = 250 feet	Survey Type: CONDITION	
Projection: NAD 1983 StatePlane South Carolina FIPS 3800 Feet Intl		

**Charleston Entrance Channel Survey**  
 The information depicted on this map represents the results of surveys made on the dates indicated and is not intended to be used for navigation. Users are encouraged to use all prudent safety measures.  
 Concluded on: 21 MAY 2020  
 Charleston, South Carolina



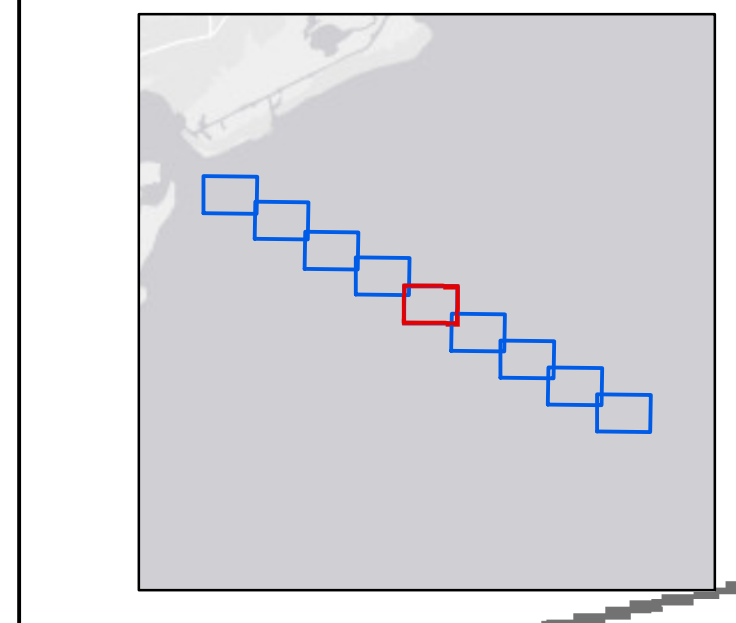
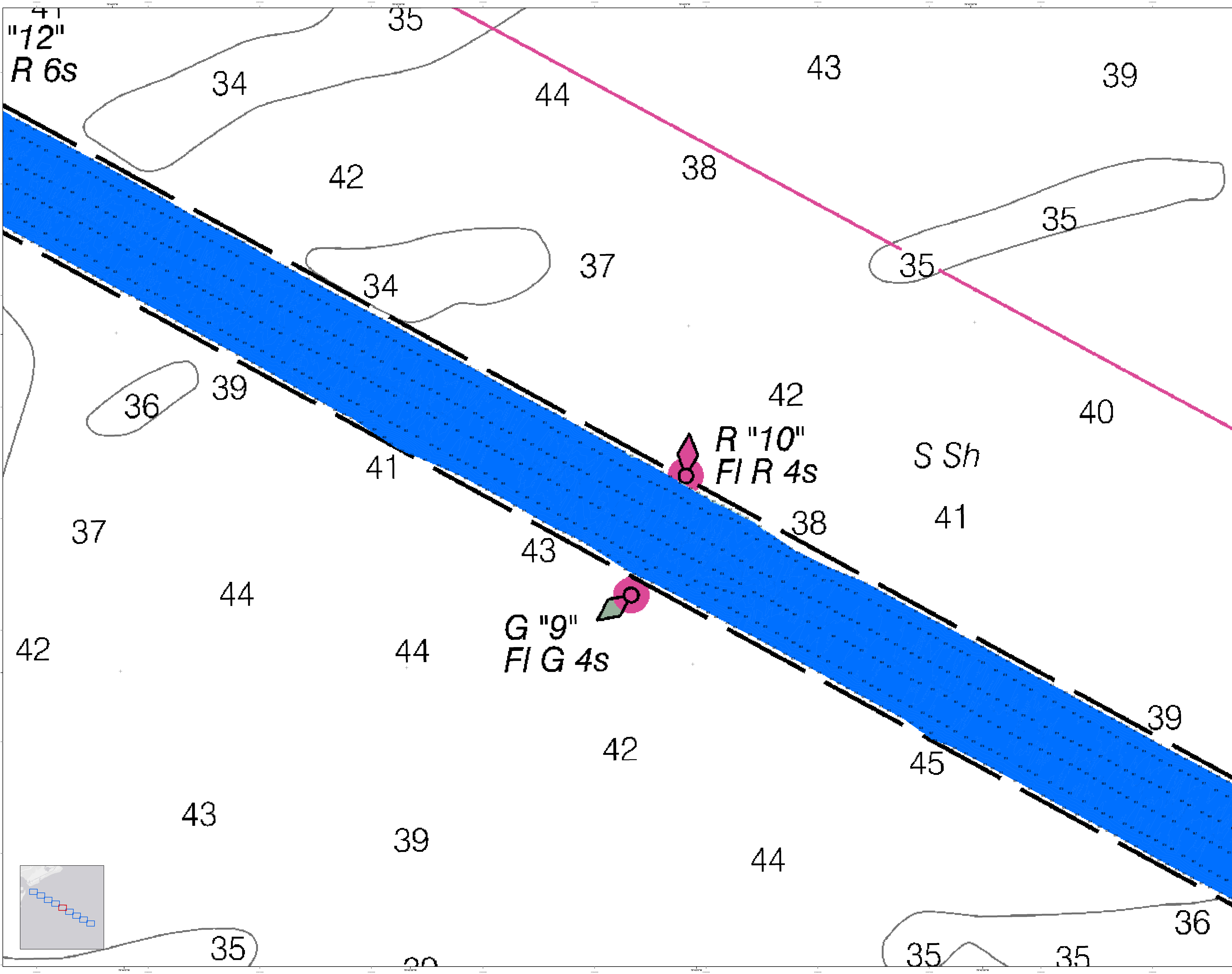
In its own capacity, the U.S. Army Corps of Engineers, Charleston District Office, Special Data Branch has made this project, including but not limited to the data and information provided herein, available for use by others in accordance with the terms and conditions of the license. There are no warranties or representations made by the Corps regarding the accuracy or reliability of the data and information provided herein. The Corps is not responsible for any errors or omissions in the data and information provided herein. The Corps is not responsible for any damages or losses resulting from the use of the data and information provided herein. The Corps is not responsible for any copyright or trademark infringement claims against the data and information provided herein. The Corps is not responsible for any other legal claims against the data and information provided herein.

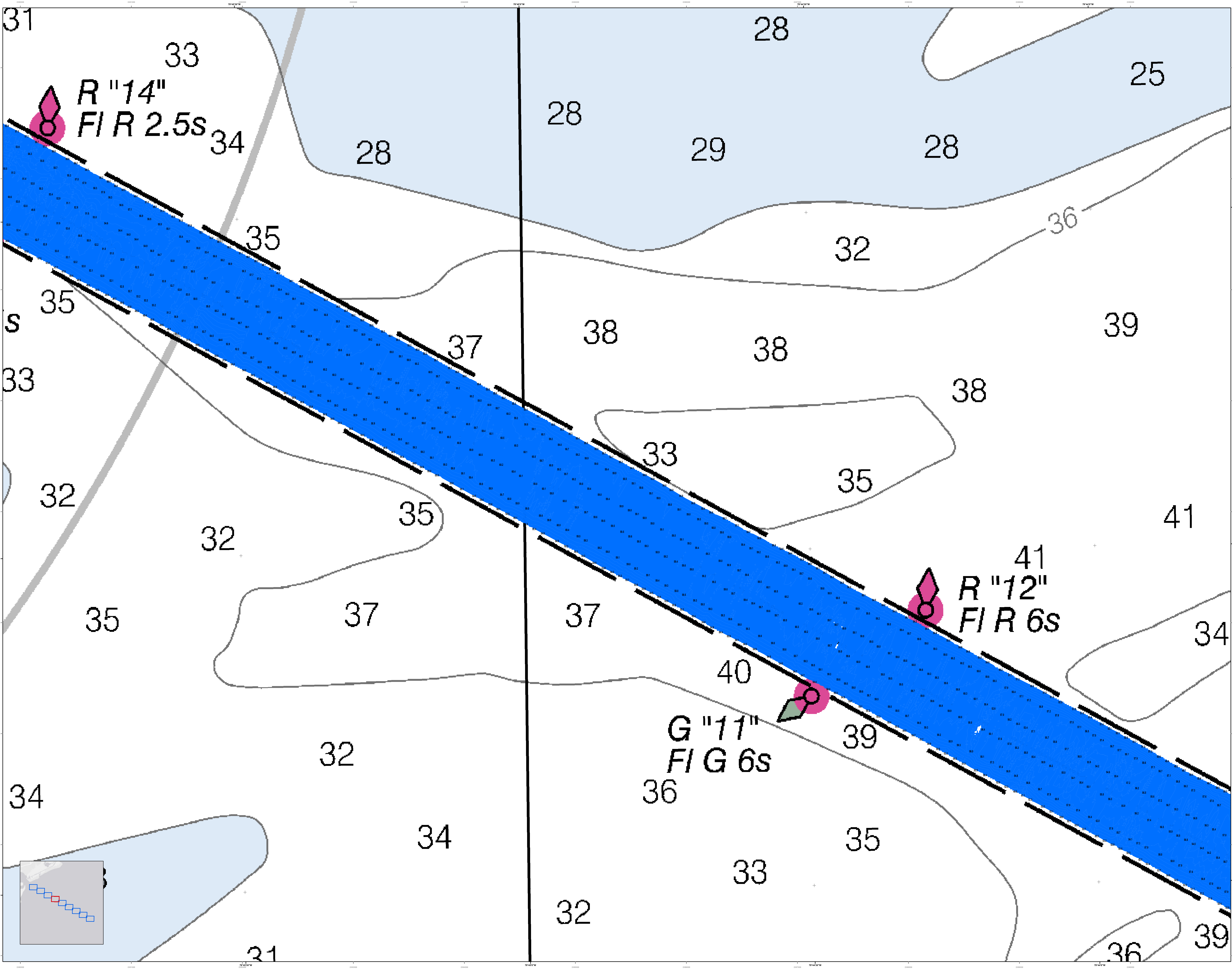
**Production Notes:**  
1. This map is a photographic reproduction of the original map and does not represent the original map.  
2. The map is a reproduction of the original map and does not represent the original map.  
3. The map is a reproduction of the original map and does not represent the original map.



Designed By: Hydro Software v3.02	Reviewed By: 1:50,000	Scale: 1 inch = 250 feet	Projection: NAD 1983 StatePlane South Carolina FIPS 3900 Feet Intl
U.S. Army Corps of Engineers Charleston District Office Charleston, South Carolina	Project Reference Number: 15C0010	Survey Year: 2020	Production Date: 27 MAY 2020
Survey Branch: BIA/HAC/DO/AE	Scale: 1:50,000	Scale: 1 inch = 250 feet	Scale: 1:50,000
CESAC/GIS@USACE.ARMY.MIL	Scale: 1:50,000	Scale: 1 inch = 250 feet	Scale: 1:50,000

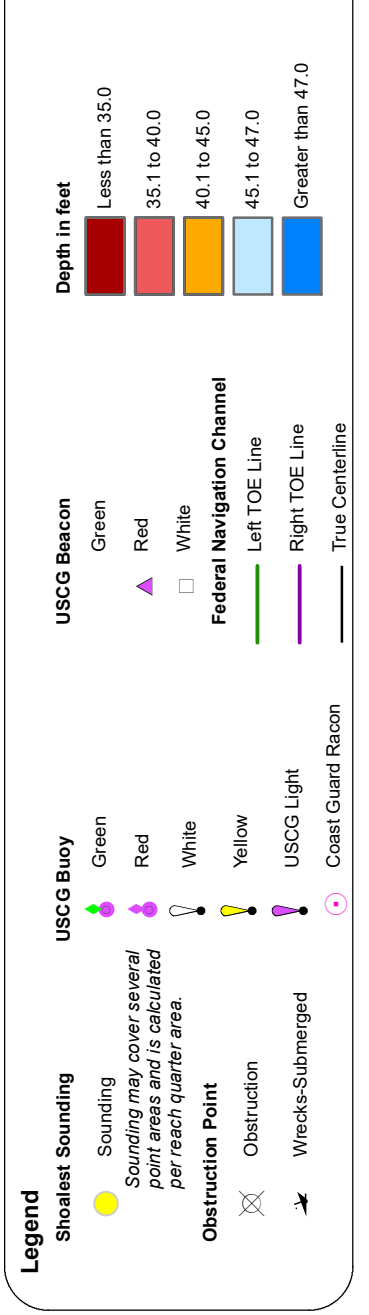
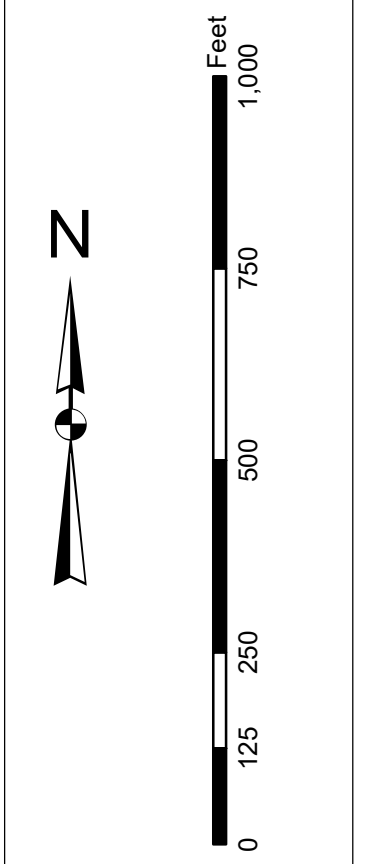
**Charleston Entrance Channel Survey**  
The information depicted on this map represents the results of surveys made on the dates indicated and is not intended to be used for general information. The information is for general information only and should not be used for any other purpose.  
Concluded on: 21 MAY 2020  
Charleston, South Carolina





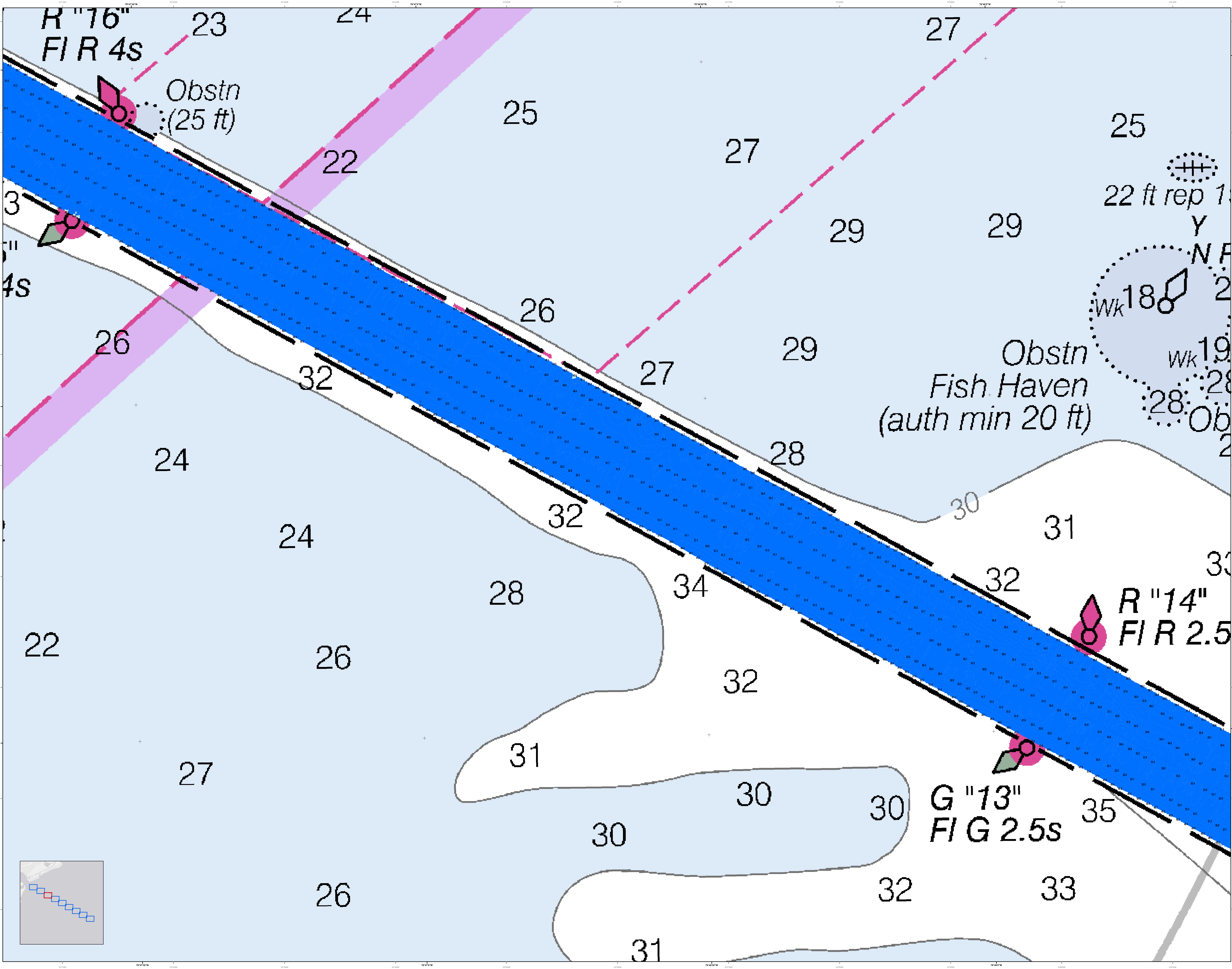
In its capacity as the U.S. Army Corps of Engineers, Charleston District Office, Special Data Branch has made this report, including the data and information contained herein, available to the public. This information is provided for informational purposes only and does not constitute an offer of insurance or any other financial product. The information is provided as is and without any warranty, express or implied. The user assumes all responsibility for the use of this information. The information is not intended to be used for navigation. The information is not intended to be used for any other purpose. The information is not intended to be used for any other purpose. The information is not intended to be used for any other purpose.

**Production Notes:**  
1. This map is a preliminary map and is subject to change without notice.  
2. The information on this map is based on the best available data and is not guaranteed to be accurate.  
3. The information on this map is not intended to be used for navigation.  
4. The information on this map is not intended to be used for any other purpose.  
5. The information on this map is not intended to be used for any other purpose.



Designed By: jehydro	Software: v3.82	Survey Date: 21 MAY 2020	Production Date: 27 MAY 2020
Reviewed By: jehydro	Scale: 1:50,000	Project Reference Number: 10000000	Project Reference Number: 10000000
Revised By: jehydro	Scale: 1 inch = 250 feet	Survey Type: CONDITION	Survey Type: CONDITION
U.S. Army Corps of Engineers Charleston District Office Savannah Branch 800 MacLeod Ave Charleston, SC 29403	U.S. Army Corps of Engineers Charleston District Office Savannah Branch 800 MacLeod Ave Charleston, SC 29403	U.S. Army Corps of Engineers Charleston District Office Savannah Branch 800 MacLeod Ave Charleston, SC 29403	U.S. Army Corps of Engineers Charleston District Office Savannah Branch 800 MacLeod Ave Charleston, SC 29403

**Charleston Entrance Channel Survey**  
The information depicted on this map represents the results of surveys made on the dates indicated and is not intended to be used for navigation. The information is not intended to be used for any other purpose. The information is not intended to be used for any other purpose. The information is not intended to be used for any other purpose.



In accordance with the U.S. Army Corps of Engineers, Charleston District Office, Special Data Branch, the data shown on this map were derived from the following sources:

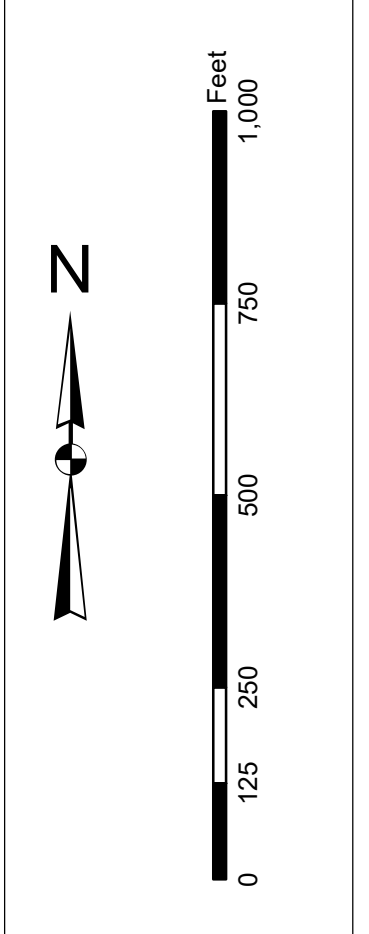
- 1. Bathymetric data collected by the Special Data Branch, Charleston District Office, from 2015 to 2020.
- 2. Bathymetric data collected by the Special Data Branch, Charleston District Office, from 2015 to 2020.
- 3. Bathymetric data collected by the Special Data Branch, Charleston District Office, from 2015 to 2020.

These data were processed and analyzed by the Special Data Branch, Charleston District Office, and the results are shown on this map. The data are not intended to be used for navigation purposes. The data are provided as a reference only. The data are not intended to be used for navigation purposes. The data are provided as a reference only.

**Production Notes:**

- 1. This map is a hydrographic chart.
- 2. The chart is based on the datum of Mean Lower Low Water (MLLW).
- 3. Soundings are in feet and meters.
- 4. The chart is based on the datum of Mean Lower Low Water (MLLW).
- 5. Soundings are in feet and meters.

Map scale: 1:25,000  
Map date: 15 MAY 2020



**Legend:**

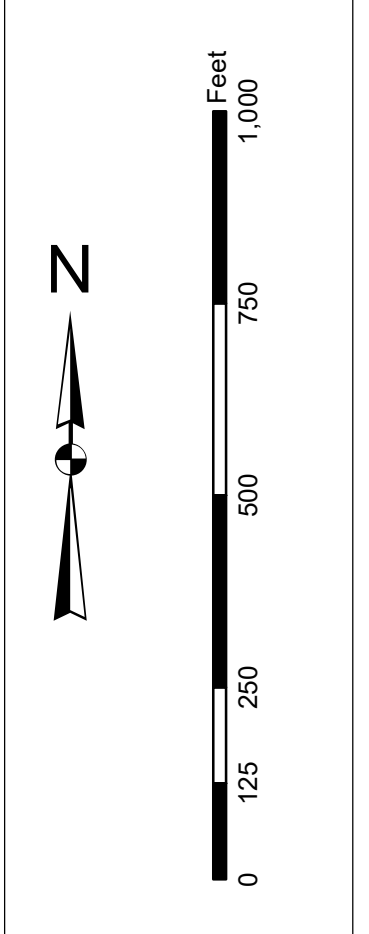
- Soundings:** 22-35
- Obstructions:** Obstn (25 ft), Fish Haven (auth min 20 ft)
- Navigation Aids:** R "16" FIR 4s, R "14" FIR 2.5s, G "13" FIG 2.5s
- Other:** Wk 18, Wk 19, Y, N, R, Ob

U.S. Army Corps of Engineers Charleston District Office Special Data Branch Charleston, SC 29403 CESAC-GIS@USACE.ARMY.MIL	Designed By: Hydro Software v3.82	Survey Date: 21 MAY 2020	Production Date: 27 MAY 2020
Reviewed By: 1:50,000	Scale: 1 inch = 250 feet	Project Reference Number: PC00210	Survey Type: CONDITION
Projection: NAD 1983 StatePlane South Carolina FIPS 3800 Feet Intl			

**Charleston Entrance Channel Survey**  
The information depicted on this map represents the results of surveys made on the dates indicated and call on other surveys and data available in the general area. The information is not intended to be used for navigation purposes. The information is provided as a reference only.

Concluded on: 21 MAY 2020  
Charleston, South Carolina

**Production Notes:**  
1. This map is a preliminary map and is not to be used for construction purposes.  
2. There are no warranties or representations made by the Corps of Engineers regarding the accuracy or reliability of the information shown on this map.  
3. The Corps of Engineers is not responsible for any errors or omissions on this map.  
4. The Corps of Engineers is not responsible for any damage or injury resulting from the use of this map.  
5. The Corps of Engineers is not responsible for any loss of life or property resulting from the use of this map.  
6. The Corps of Engineers is not responsible for any loss of data or information resulting from the use of this map.  
7. The Corps of Engineers is not responsible for any loss of time or money resulting from the use of this map.  
8. The Corps of Engineers is not responsible for any loss of reputation resulting from the use of this map.  
9. The Corps of Engineers is not responsible for any loss of honor resulting from the use of this map.  
10. The Corps of Engineers is not responsible for any loss of respect resulting from the use of this map.  
11. The Corps of Engineers is not responsible for any loss of dignity resulting from the use of this map.  
12. The Corps of Engineers is not responsible for any loss of self-respect resulting from the use of this map.  
13. The Corps of Engineers is not responsible for any loss of self-dignity resulting from the use of this map.  
14. The Corps of Engineers is not responsible for any loss of self-respect and self-dignity resulting from the use of this map.  
15. The Corps of Engineers is not responsible for any loss of self-respect and self-dignity resulting from the use of this map.



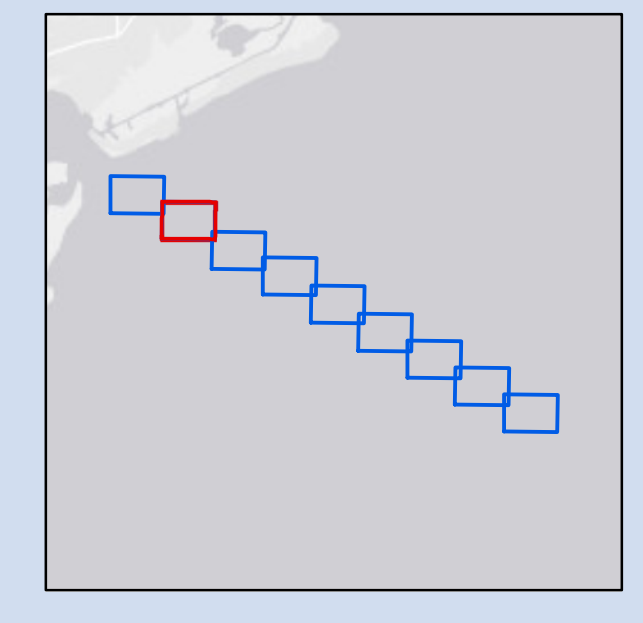
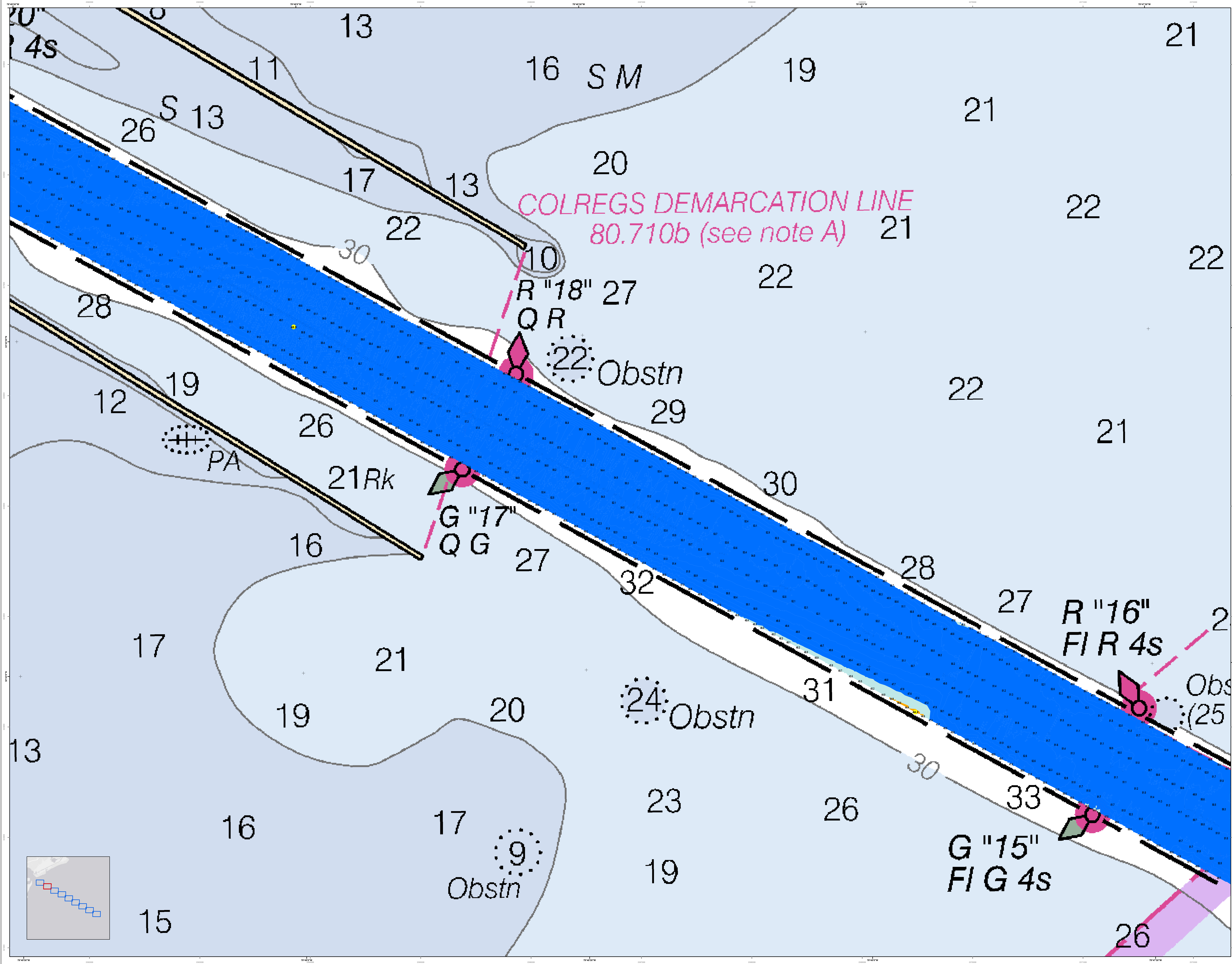
**Legend**

**Channel Features:**  
 - Channel Centerline  
 - Channel Edge  
 - Channel Bank  
 - Channel Bottom  
 - Channel Obstruction

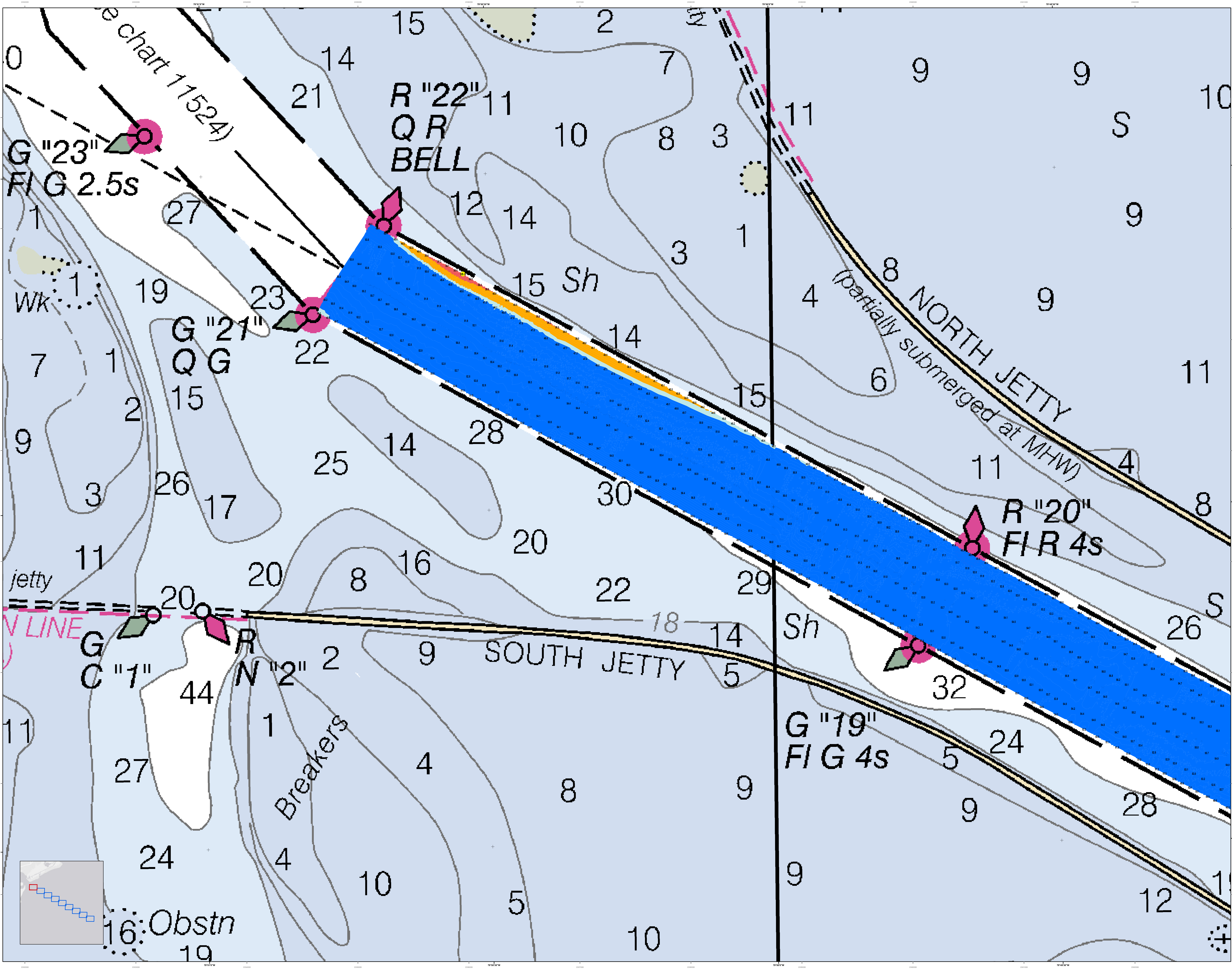
**Other Features:**  
 - Obstruction  
 - Survey Point  
 - Utility Line  
 - Elevation Contour  
 - Property Boundary

Designed By:	Survey Date:	Production Date:
Reviewed By:	21 MAY 2020	27 MAY 2020
Revised By:	Project Reference Number:	Project Reference Number:
Scale:	1:5000	1:5000
Projection:	NAD 1983 StatePlane South Carolina FIPS 3900 Feet Int	NAD 1983 StatePlane South Carolina FIPS 3900 Feet Int

**Charleston Entrance Channel Survey**  
 The information depicted on this map represents the results of surveys made on the dates indicated and call on the conditions existing at that time.  
 Concluded on: 21 MAY 2020  
 Charleston, South Carolina







U.S. Army Corps of Engineers  
Charleston District

**Production Notes:**  
 1. This is a preliminary chart. It is not to be used for navigation.  
 2. The information on this chart is based on the most recent available data.  
 3. The information on this chart is based on the most recent available data.  
 4. The information on this chart is based on the most recent available data.  
 5. The information on this chart is based on the most recent available data.

**Legend:**  
 Buoy: G (Green), R (Red), N (Noon)  
 Light: Fl (Flashing), F (Fixed), V (Variable)  
 Sound: Bell, Horn, Gong, Whistle, Bell Buoy, Bell Buoy with Light, Bell Buoy with Light and Sound, Bell Buoy with Light and Sound and Buoy  
 Obstruction: Ob (Obstruction), Obstr (Obstruction), Obstr (Obstruction), Obstr (Obstruction)

Designed By:	Jeffery S. Smith	Production Date:	21 MAY 2020
Reviewed By:	John D. Smith	Project Reference Number:	15030
Scale:	1 inch = 250 feet	Survey Date:	CONDITION
Projection:	NAD 1983 StatePlane South Carolina FIPS 3800 Feet Int		

**Charleston Entrance Channel Survey**  
 The information depicted on this map represents the results of surveys made on the dates indicated and call on only the conditions existing at that time.  
 Concluded on: 21 MAY 2020  
 Charleston, South Carolina

SHEET REFERENCE NUMBER  
 C002  
 SHEET 9 OF 9