



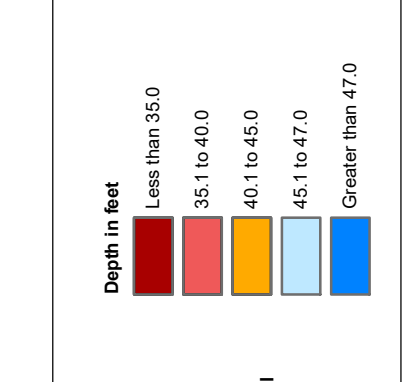
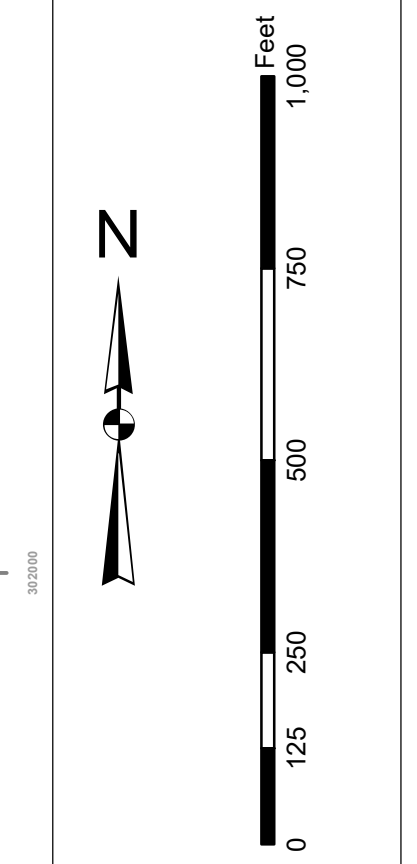






In accordance with the U.S. Army Corps of Engineers, Charleston District Office, Navigation Channel Survey for the Charleston Harbor and Entrance Channel, the information depicted on this map represents the results of surveys made on the dates indicated and call only on the conditions existing at that time. The information is not intended to be used for navigation. Mariners are encouraged to use all prudent safety measures.

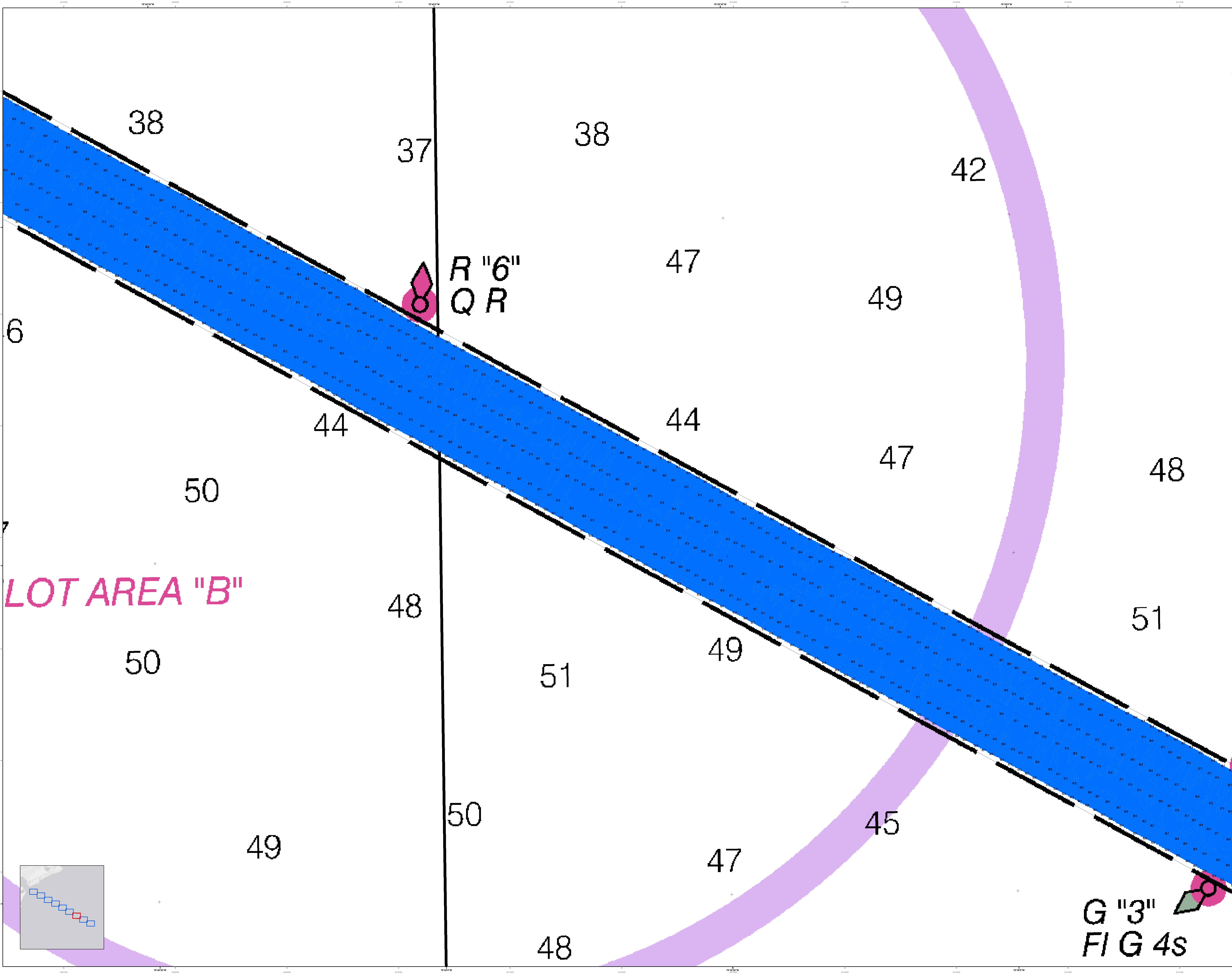
Production Notes:  
1. This is a preliminary map.  
2. The information is not intended to be used for navigation.  
3. The information is not intended to be used for navigation.  
4. The information is not intended to be used for navigation.  
5. The information is not intended to be used for navigation.



Legend:  
 Survey Boundary: Dashed line  
 Survey Point: Circle with crosshair  
 Survey Line: Solid line  
 Survey Station: Square with crosshair  
 Survey Control: Triangle with crosshair  
 Survey Monument: Circle with crosshair  
 Survey Marker: Square with crosshair  
 Survey Stake: Circle with crosshair  
 Survey Nail: Circle with crosshair  
 Survey Bolt: Circle with crosshair  
 Survey Pipe: Circle with crosshair  
 Survey Ring: Circle with crosshair  
 Survey Cap: Circle with crosshair  
 Survey Plug: Circle with crosshair  
 Survey Pin: Circle with crosshair  
 Survey Nail: Circle with crosshair  
 Survey Bolt: Circle with crosshair  
 Survey Pipe: Circle with crosshair  
 Survey Ring: Circle with crosshair  
 Survey Cap: Circle with crosshair  
 Survey Plug: Circle with crosshair  
 Survey Pin: Circle with crosshair

Designed By:	lehydro Software v3.82	Survey Date:	16 JULY 2021 / 29 JULY 2021
Reviewed By:	1:10,000	Project Reference Number:	PC00010
Scale:	1 inch = 250 feet	Survey Station:	CONDITION
Projection:	NAD 1983 StatePlane South Carolina FIPS 3800 Feet Intl		

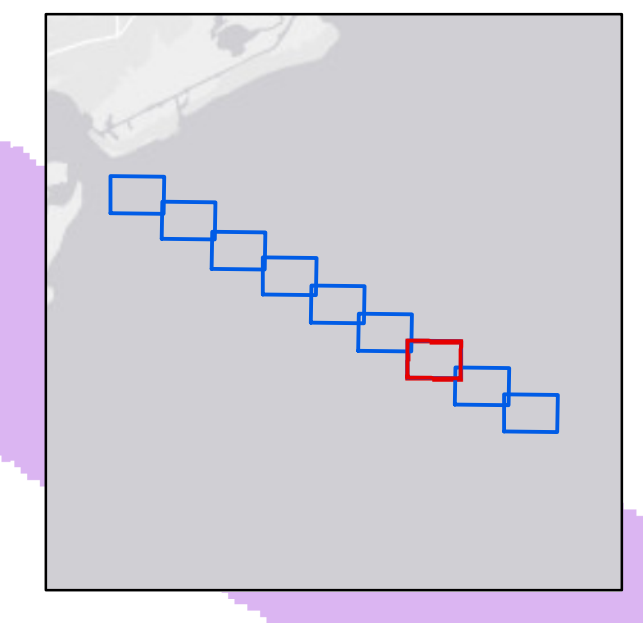
U.S. Army Corps of Engineers  
Charleston District  
Charleston, South Carolina  
843-328-8000



LOT AREA "B"

R "6"  
QR

G "3"  
FIG 4s



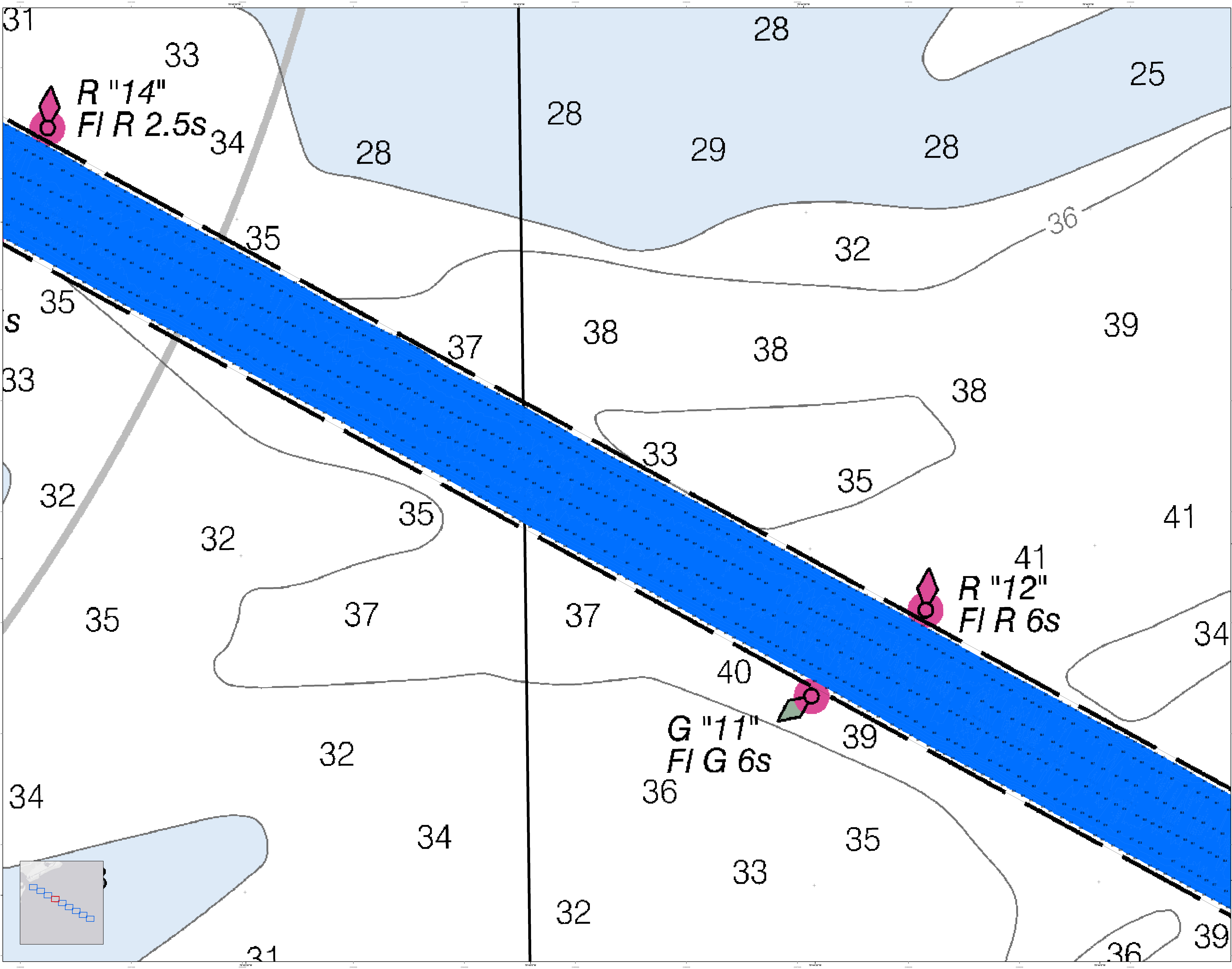






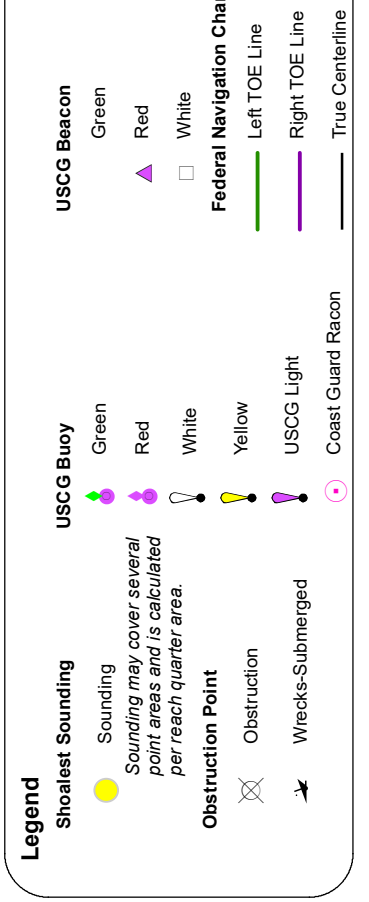
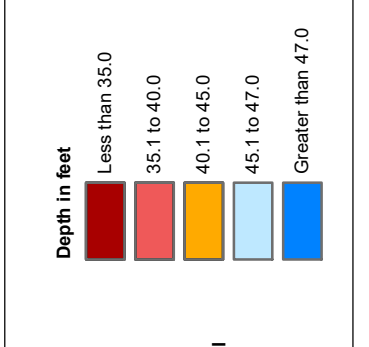
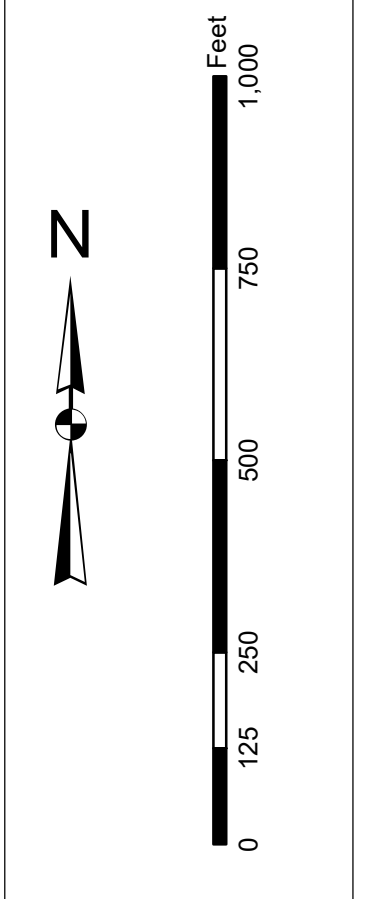






In accordance with the U.S. Army Corps of Engineers, Charleston District Office, Navigation Channel Survey for the purpose of determining the location and depth of the channel, the following information is provided:  
1. The data were collected using a total station and a differential GPS receiver.  
2. The data were processed using the least squares method.  
3. The data were plotted on a grid with a scale of 1 inch = 250 feet.  
4. The data were checked for accuracy and consistency.  
5. The data were approved for use as shown on this map.  
6. The data are subject to change without notice.  
7. The data are not to be used for any other purpose.  
8. The data are not to be used for any other purpose.  
9. The data are not to be used for any other purpose.  
10. The data are not to be used for any other purpose.

Production Notes:  
1. This map is a preliminary map and is subject to change without notice.  
2. The data were collected using a total station and a differential GPS receiver.  
3. The data were processed using the least squares method.  
4. The data were plotted on a grid with a scale of 1 inch = 250 feet.  
5. The data were checked for accuracy and consistency.  
6. The data were approved for use as shown on this map.  
7. The data are subject to change without notice.  
8. The data are not to be used for any other purpose.  
9. The data are not to be used for any other purpose.  
10. The data are not to be used for any other purpose.



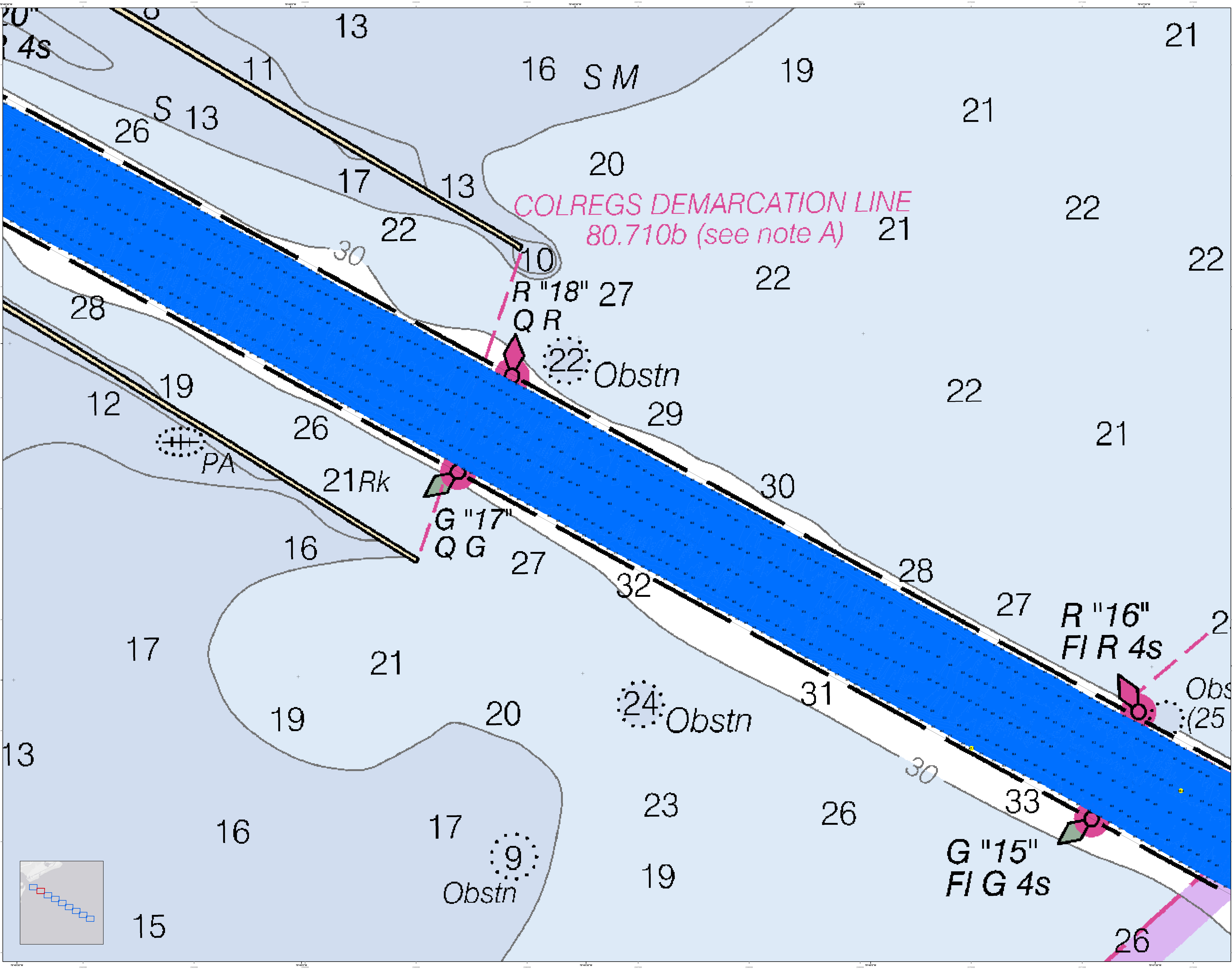
Designed By: J. H. HARRIS	Survey Date: 16 JULY 2021	Production Date: 29 JULY 2021
Reviewed By: J. H. HARRIS	Project Reference Number: 16JUL2021-0000	
Checked By: J. H. HARRIS	Scale: 1 inch = 250 feet	CONDITION: AS SHOWN
U.S. ARMY CORPS OF ENGINEERS CHARLESTON DISTRICT 800 HARRISON AVENUE CHARLESTON, SC 29405 843-325-8000	U.S. ARMY CORPS OF ENGINEERS CHARLESTON DISTRICT 800 HARRISON AVENUE CHARLESTON, SC 29405 843-325-8000	U.S. ARMY CORPS OF ENGINEERS CHARLESTON DISTRICT 800 HARRISON AVENUE CHARLESTON, SC 29405 843-325-8000

Charleston Entrance Channel Survey  
The information depicted on this map represents the results of surveys made on the dates indicated and is not to be used for any other purpose.  
Concluded on: 16 JULY 2021  
Charleston, South Carolina



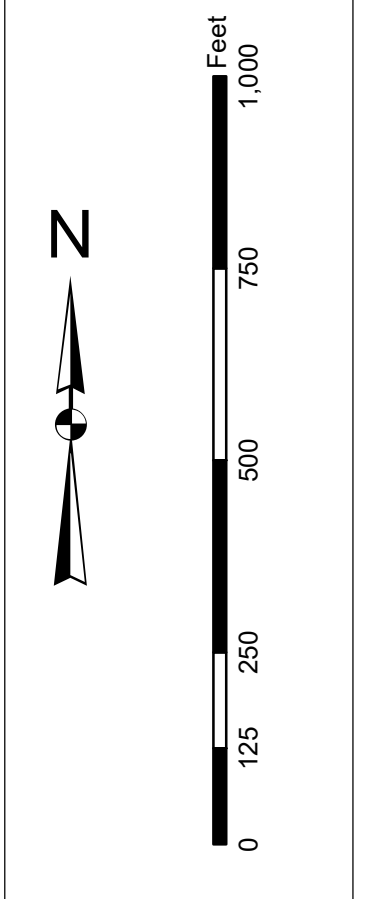






In accordance with the U.S. Army Corps of Engineers, Charleston District Office, Hydrographic Survey Standards for Great Lakes, Soundings, and Obstructions, this chart is published for the use of mariners. These data were derived from hydrographic surveys conducted in accordance with the standards of the U.S. Army Corps of Engineers, Hydrographic Survey Standards for Great Lakes, Soundings, and Obstructions. The data are not intended to be used for navigation. Mariners are encouraged to use all prudent safety practices.

Production Notes:  
1. This chart is published in accordance with the standards of the U.S. Army Corps of Engineers, Hydrographic Survey Standards for Great Lakes, Soundings, and Obstructions.  
2. Soundings are in feet and meters.  
3. Obstructions are in feet and meters.  
4. The datum is Mean Lower Low Water (MLLW).  
5. The chart is published in accordance with the standards of the U.S. Army Corps of Engineers, Hydrographic Survey Standards for Great Lakes, Soundings, and Obstructions.  
6. The chart is published in accordance with the standards of the U.S. Army Corps of Engineers, Hydrographic Survey Standards for Great Lakes, Soundings, and Obstructions.  
7. The chart is published in accordance with the standards of the U.S. Army Corps of Engineers, Hydrographic Survey Standards for Great Lakes, Soundings, and Obstructions.  
8. The chart is published in accordance with the standards of the U.S. Army Corps of Engineers, Hydrographic Survey Standards for Great Lakes, Soundings, and Obstructions.  
9. The chart is published in accordance with the standards of the U.S. Army Corps of Engineers, Hydrographic Survey Standards for Great Lakes, Soundings, and Obstructions.  
10. The chart is published in accordance with the standards of the U.S. Army Corps of Engineers, Hydrographic Survey Standards for Great Lakes, Soundings, and Obstructions.

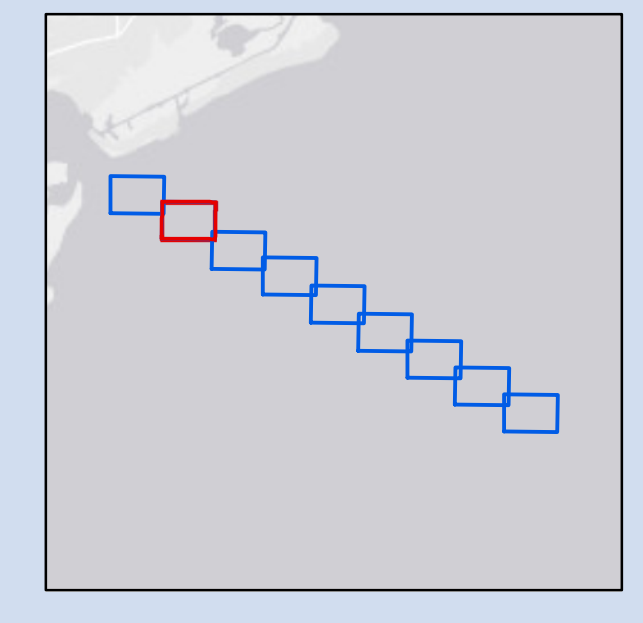


**Chart Symbols**

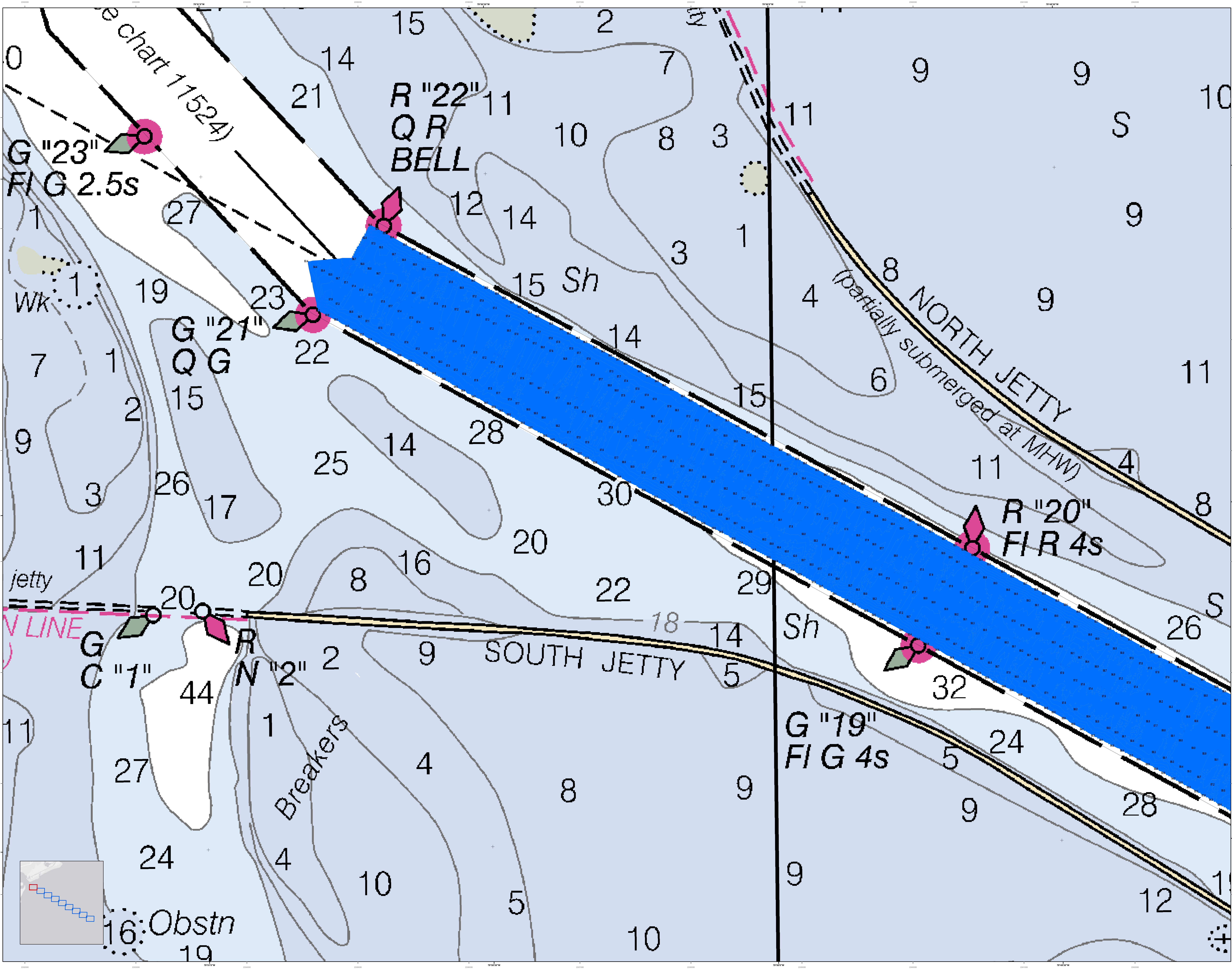
- Depth Soundings: 10, 11, 12, 13, 14, 15, 16, 17, 18, 19, 20, 21, 22, 23, 24, 25, 26, 27, 28, 29, 30, 31, 32, 33
- Obstructions: 9, 22, 24, 25
- Navigation Aids: PA, 21Rk
- Channel Markers: R "18" 27, G "17" 27, R "16" 27, G "15" 27
- Demarcation Lines: COLREGS DEMARCATION LINE 80.710b (see note A)
- Other: 4s, S 13, SM, 4s, QR, QG

Designed By:	Hydro Software v3.82	Production Date:	16 JULY 2021 15 JULY 2021
Reviewed By:	ABSOLUTE STATE	Project Reference Number:	PC00010
Revised By:	1:50,000	Survey System:	CONDITON
Scale:	1 inch = 250 feet	Projection:	NAD 1983 StatePlane South Carolina FIPS 3800 Feet Intl
U.S. ARMY CORPS OF ENGINEERS CHARLESTON DISTRICT CHARLESTON, SOUTH CAROLINA 815 HADDOCK AVE CHARLESTON, SC 29403 843-328-8000			

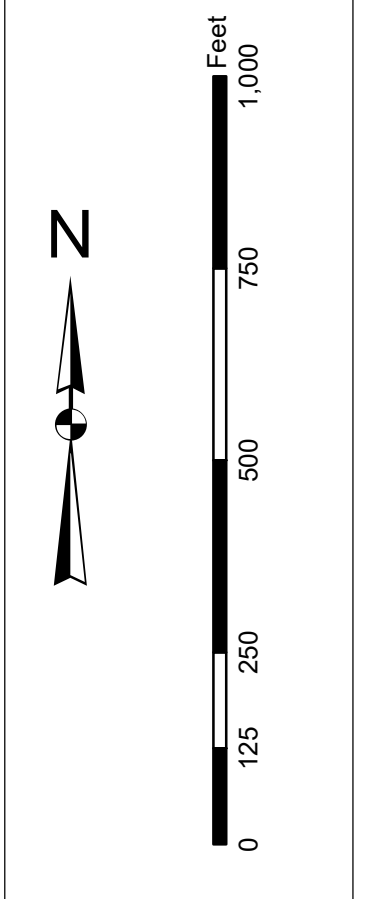
**Charleston Entrance Channel Survey**  
The information depicted on this map represents the results of surveys made on the dates indicated and call on the conditions existing at that time.  
Concluded on: 16 JULY 2021  
Charleston, South Carolina







**Production Notes:**  
 1. This is a preliminary chart. It is not to be used for navigation.  
 2. The information on this chart is based on the most recent available data.  
 3. The information on this chart is based on the most recent available data.  
 4. The information on this chart is based on the most recent available data.  
 5. The information on this chart is based on the most recent available data.  
 6. The information on this chart is based on the most recent available data.  
 7. The information on this chart is based on the most recent available data.  
 8. The information on this chart is based on the most recent available data.  
 9. The information on this chart is based on the most recent available data.  
 10. The information on this chart is based on the most recent available data.



**Legend**

Symbol	Description
[Color swatches]	Depth Soundings
[Symbol]	Obstruction
[Symbol]	Breaker
[Symbol]	Light
[Symbol]	Navigation Aid
[Symbol]	Channel
[Symbol]	Jetty
[Symbol]	Obstn
[Symbol]	Sh
[Symbol]	Wk
[Symbol]	V LINE

U.S. Army Corps of Engineers Charleston District Charleston, South Carolina	Designed By: J. H. ... Reviewed By: J. H. ... Scale: 1 inch = 250 feet Projection: NAD 1983 StatePlane South Carolina FIPS 3800 Feet Int
U.S. Army Corps of Engineers Charleston District Charleston, South Carolina	Production Date: 16 JULY 2021 12:29 JULY 2021 Project Reference Number: ... Survey Station: ... Condition: ...

**Charleston Entrance Channel Survey**  
 The information depicted on this map represents the results of surveys made on the dates indicated and call on only the conditions existing at that time.  
 Concluded on: 16 JULY 2021  
 Charleston, South Carolina