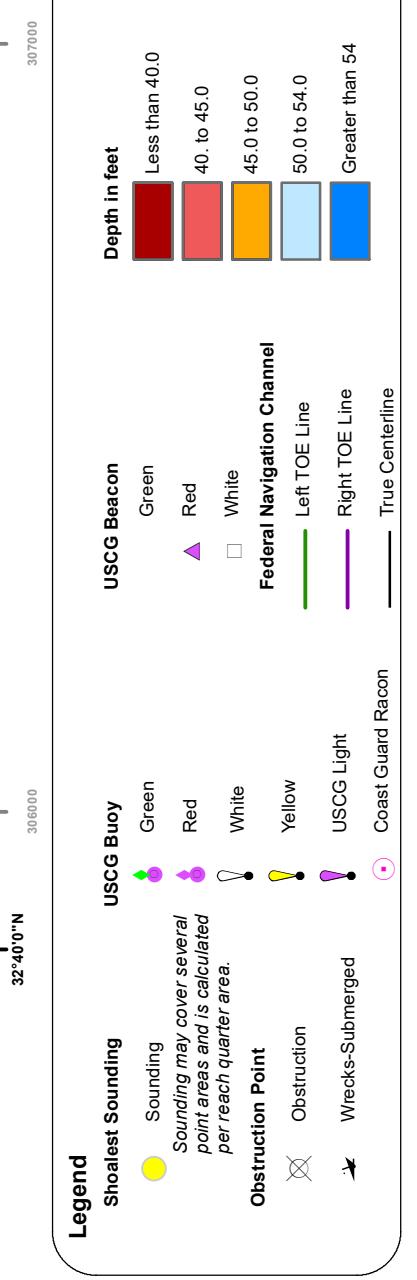
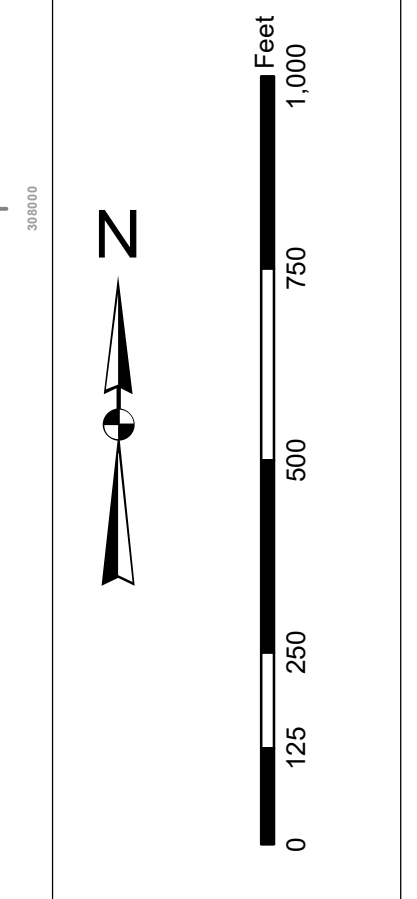


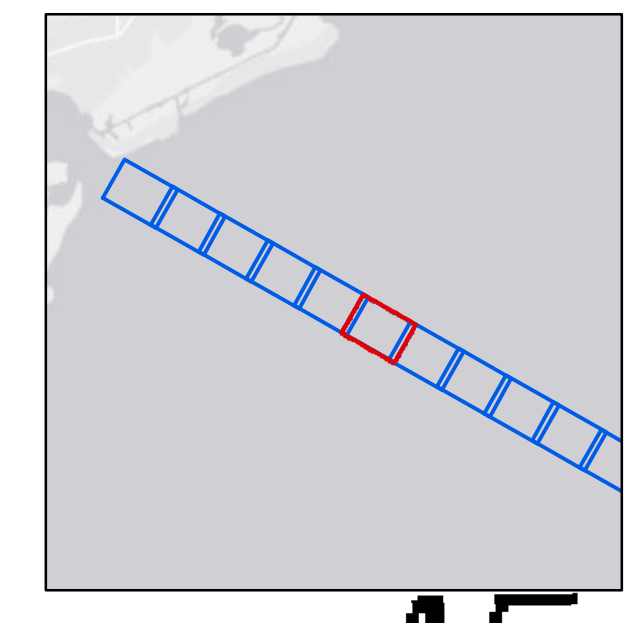
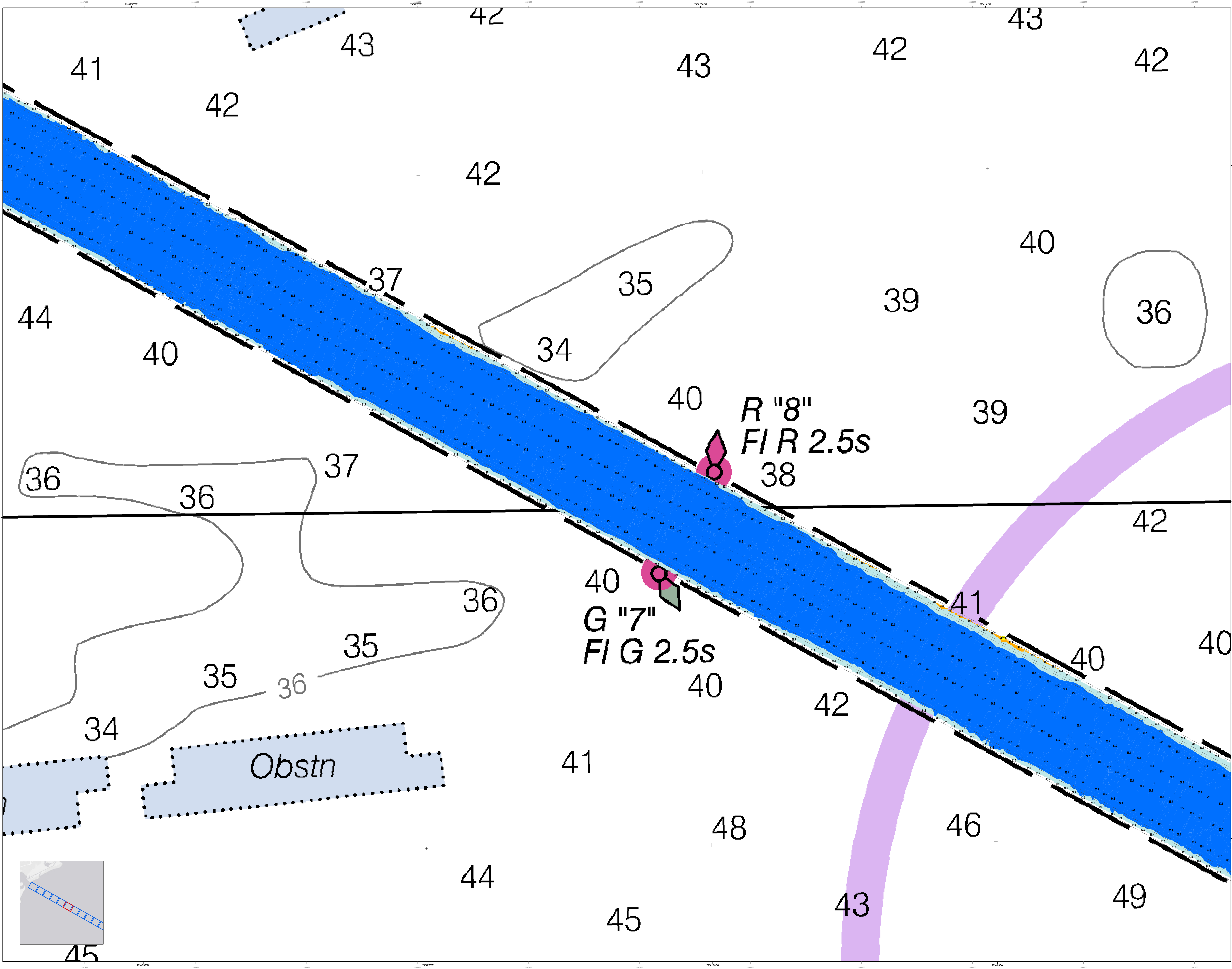
In accordance with the U.S. Army Corps of Engineers, Charleston District Office, Navigation Channel to be used for direct, indirect, and other purposes, this map is intended to be used for navigation purposes only. It is not intended to be used for any other purpose. The information on this map is based on the most current data available. The information on this map is not intended to be used for any other purpose. The information on this map is not intended to be used for any other purpose.

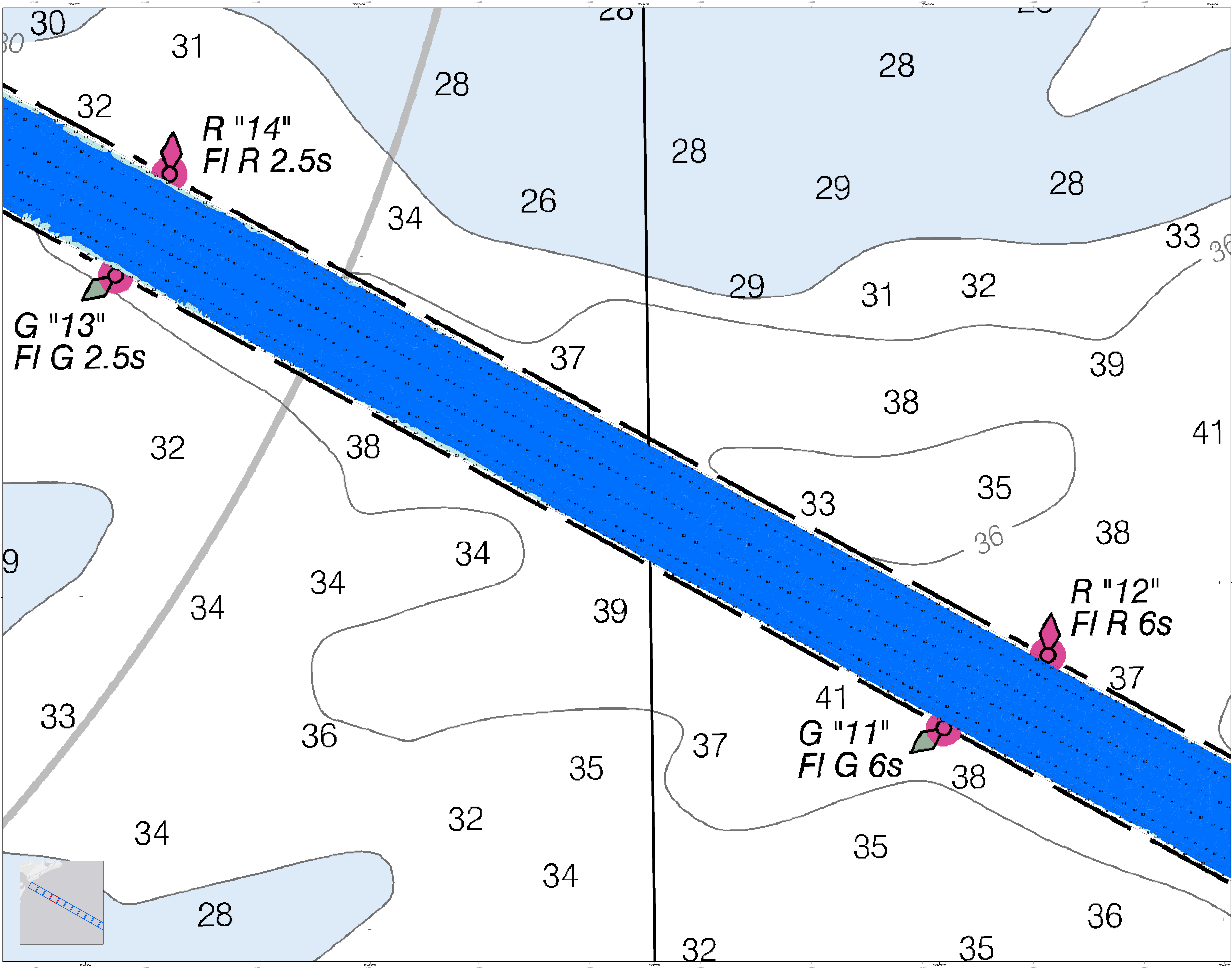
Production Notes:
1. This map is a preliminary map.
2. The information on this map is based on the most current data available.
3. The information on this map is not intended to be used for any other purpose.
4. The information on this map is not intended to be used for any other purpose.



Designed By:	lehydo Software v3.82	Production Date:	21 JUNE 2022 29 JUNE 2022
Reviewed By:	1:50,000	Project Reference Number:	PC00010
Reference Scale:	1 inch = 250 feet	Survey Type:	CONDITION
Projection:	NAD 1983 StatePlane South Carolina FIPS 3900 Feet Intl		

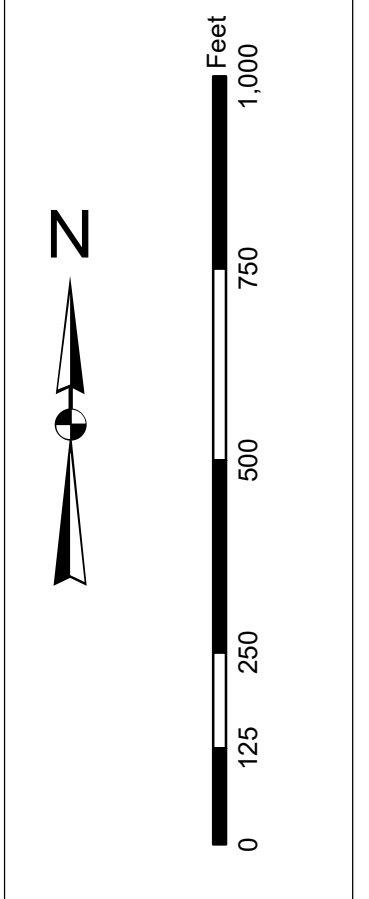
U.S. ARMY CORPS OF ENGINEERS
CHARLESTON DISTRICT
CHARLESTON, SOUTH CAROLINA
804 HARGRAVE AVE
CHARLESTON, SC 29403
843-328-8000





In accordance with the U.S. Army Corps of Engineers, Charleston District Office, Navigation Branch's standards for charting, this chart is intended to be used for navigational purposes only. It is not intended to be used for any other purpose. There are no warranties or representations made by the Corps of Engineers regarding the accuracy or completeness of the information shown on this chart. The user is responsible for determining the accuracy and completeness of the information shown on this chart. The user is encouraged to use all prudent safety measures.

Production Notes:
1. This chart is a hydrographic chart.
2. The chart is based on the following data:
a. Bathymetry data collected by the Corps of Engineers.
b. Bathymetry data collected by other agencies.
c. Bathymetry data collected by the user.
3. Soundings are in feet and meters.
4. The chart is based on the datum of Mean Lower Low Water (MLLW).
5. The chart is based on the datum of Mean High Water (MHW).
6. The chart is based on the datum of Mean Sea Level (MSL).
7. The chart is based on the datum of Mean High Water (MHW).
8. The chart is based on the datum of Mean Sea Level (MSL).
9. The chart is based on the datum of Mean High Water (MHW).
10. The chart is based on the datum of Mean Sea Level (MSL).



Legend

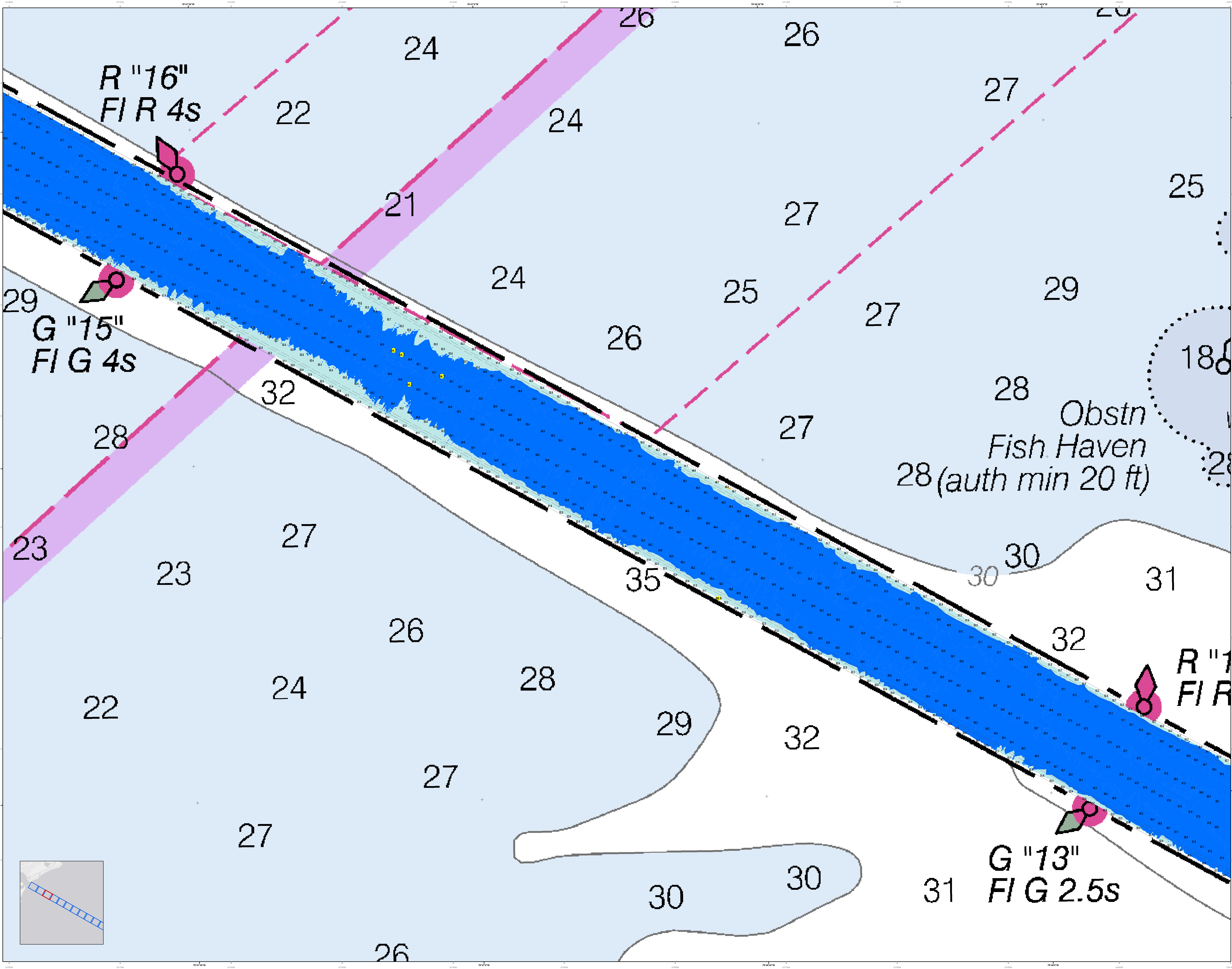
Soundings:
 28 to 30: Blue
 31 to 33: Yellow
 34 to 36: Orange
 37 to 39: Red
 40 to 42: Dark Red

Other Symbols:
 - Red diamond: R '14' FIR 2.5s
 - Green diamond: G '13' FIG 2.5s
 - Red diamond: R '12' FIR 6s
 - Dashed line: Channel boundary
 - Dotted line: Channel boundary
 - Solid line: Channel boundary
 - Dotted line: Channel boundary
 - Dashed line: Channel boundary
 - Solid line: Channel boundary

Designed By:	Survey Date:	Production Date:
Reviewed By:	21 JUNE 2022	29 JUNE 2022
Revised By:	Project Reference Number:	Project Reference Number:
Revised By:	13000	13000
Revised By:	Survey Date:	Survey Date:
Revised By:	CONDITION	CONDITION
Revised By:	Projection:	Projection:
Revised By:	NAD 1983 StatePlane South Carolina FIPS 3800 Feet Intl	NAD 1983 StatePlane South Carolina FIPS 3800 Feet Intl

Charleston Entrance Channel Survey
The information depicted on this map represents the results of surveys made on the dates indicated and is not intended to be used for any other purpose. The user is responsible for determining the accuracy and completeness of the information shown on this chart. The user is encouraged to use all prudent safety measures.

Concluded on: 21 JUNE 2022
Charleston, South Carolina



U.S. Army Corps of Engineers
Charleston District

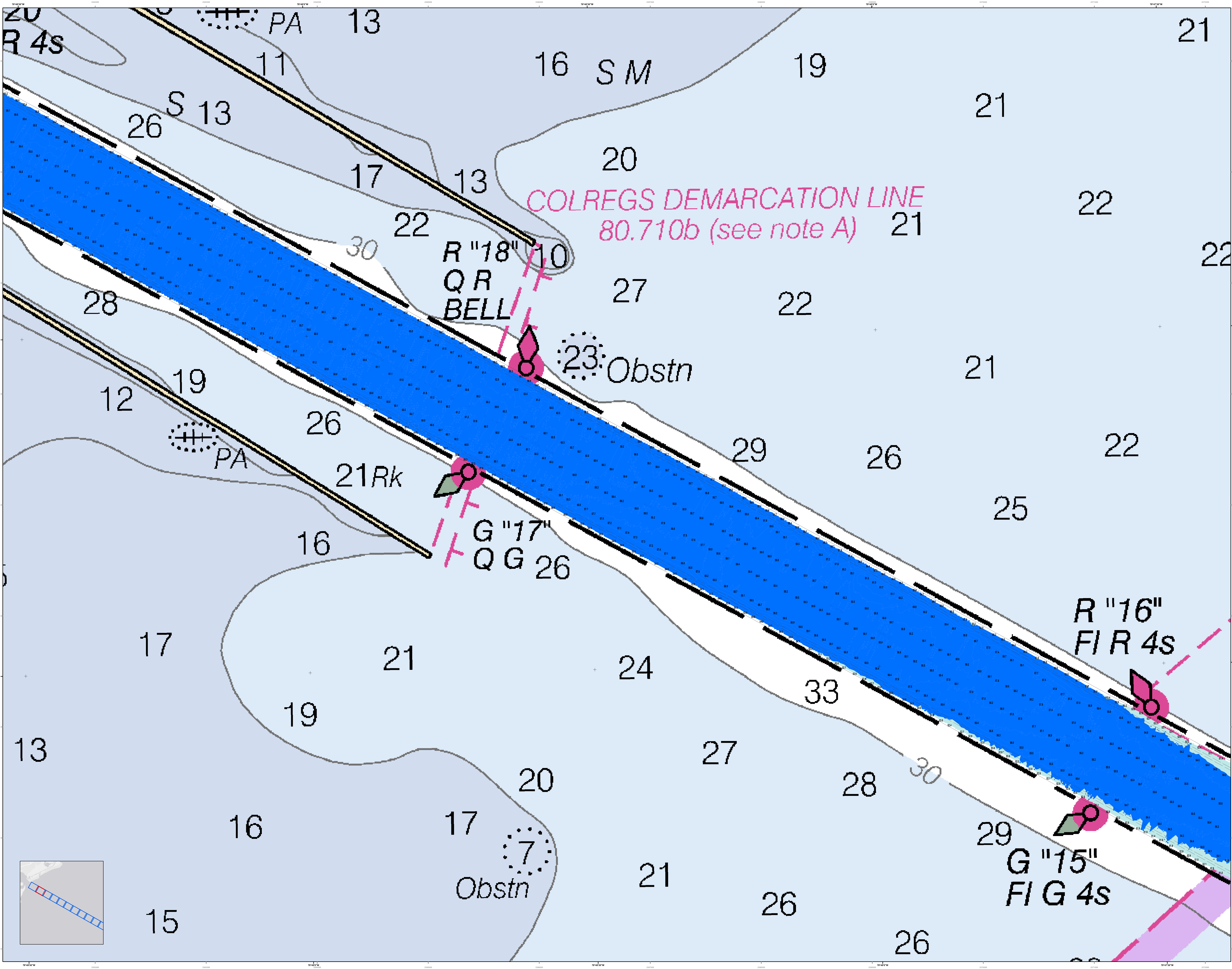
Production Date: 29 JUNE 2022
Survey Date: 21 JUNE 2022
Project Reference Number: 13030
Survey Cycle: CONDITION

Designed By: eHydro Software v3.82
Reviewed By: Absolute Scale 1:15,000
Revised Date: 1 inch = 250 feet
Projection: NAD 1983 StatePlane South Carolina FIPS 3900 Feet Intl

U.S. Army Corps of Engineers
CHARLESTON DISTRICT
CHARLESTON, SOUTH CAROLINA
USACE CHARLESTON
80A HADGODDARD AVE
CHARLESTON, SC 29403
843-328-8000

Charleston Entrance Channel Survey
The information depicted on this map represents the results of surveys made on the dates indicated and is not to be used for navigation purposes without the general conditions existing at that time.
Concluded on: 21 JUNE 2022
Charleston, South Carolina

SHEET REFERENCE NUMBER
C002
SHEET 9 OF 11



COLREGS DEMARCATION LINE
80.710b (see note A)

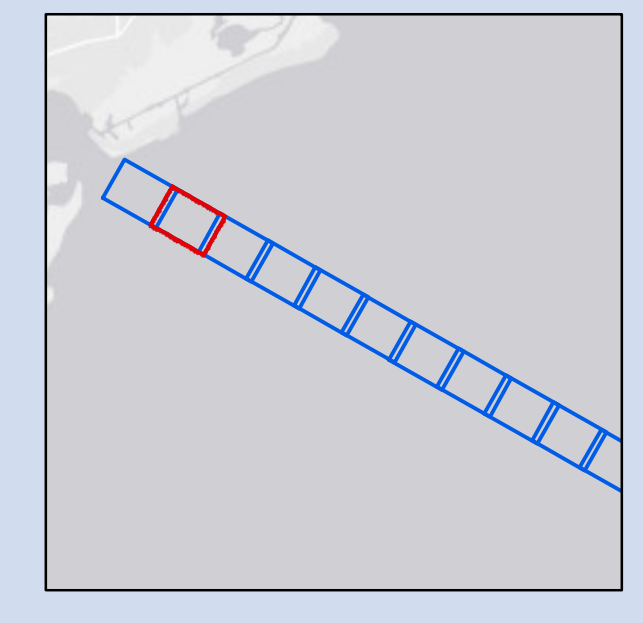
R "18"
Q R
BELL

23 Obstn

G "17"
Q G 26

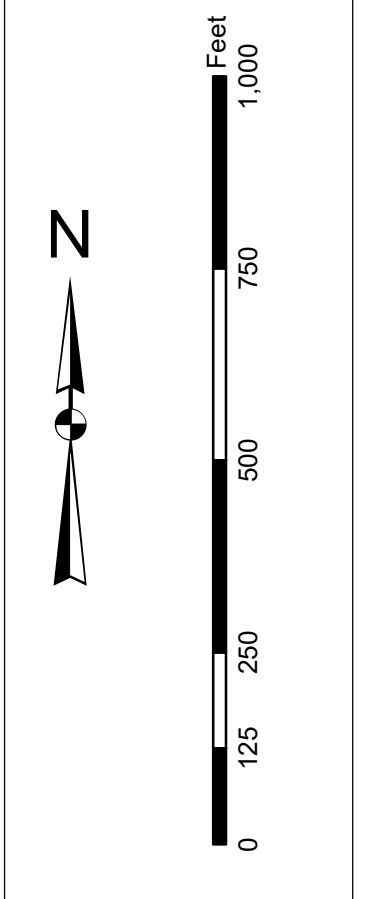
R "16"
FIR 4s

G "15"
FI G 4s



In accordance with the U.S. Army Corps of Engineers, Charleston District Office, Navigation Branch's policy for chart production, this chart is intended to be used for navigational purposes only. It is not intended to be used for any other purpose. The data on this chart were derived from the best available information and are not guaranteed to be accurate. The user is responsible for determining the accuracy and reliability of the information on this chart. The user is encouraged to use all prudent safety measures.

Production Notes:
1. This chart is produced in accordance with the U.S. Army Corps of Engineers, Charleston District Office, Navigation Branch's policy for chart production.
2. The data on this chart were derived from the best available information and are not guaranteed to be accurate.
3. The user is responsible for determining the accuracy and reliability of the information on this chart.
4. The user is encouraged to use all prudent safety measures.



Legend

Soundings
 10 to 15 fathoms
 16 to 20 fathoms
 21 to 25 fathoms
 26 to 30 fathoms
 31 to 35 fathoms
 36 to 40 fathoms
 41 to 45 fathoms
 46 to 50 fathoms
 51 to 55 fathoms
 56 to 60 fathoms
 61 to 65 fathoms
 66 to 70 fathoms
 71 to 75 fathoms
 76 to 80 fathoms
 81 to 85 fathoms
 86 to 90 fathoms
 91 to 95 fathoms
 96 to 100 fathoms

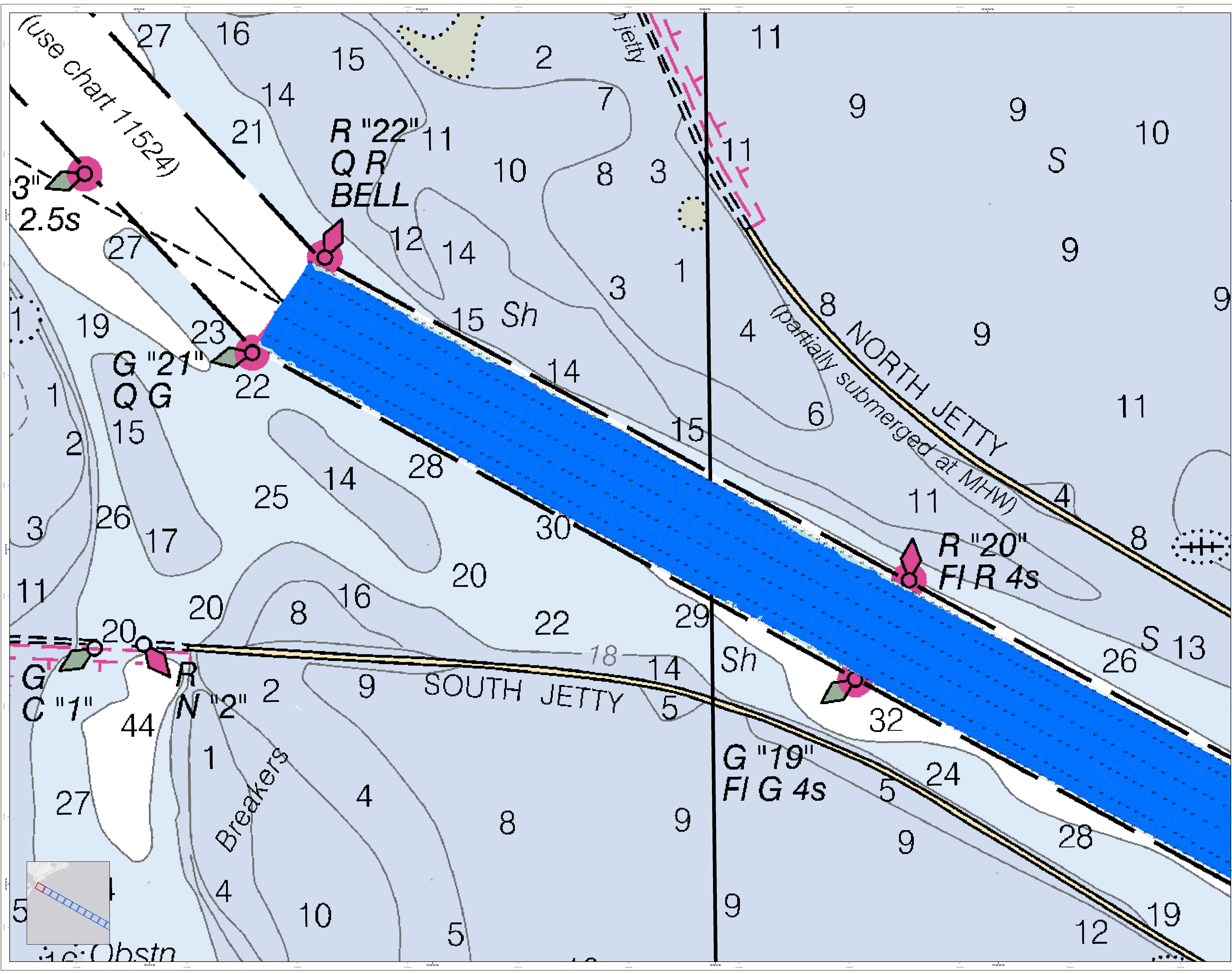
Obstructions
 Obstruction
 Obstruction Light
 Obstruction Buoy
 Obstruction Beacon
 Obstruction Daymark
 Obstruction Nightmark
 Obstruction Sound
 Obstruction Light Buoy
 Obstruction Light Beacon
 Obstruction Daymark Buoy
 Obstruction Nightmark Buoy
 Obstruction Sound Buoy
 Obstruction Light Beacon Buoy
 Obstruction Daymark Beacon Buoy
 Obstruction Nightmark Beacon Buoy
 Obstruction Sound Beacon Buoy

Navigation Aids
 Lighted Buoy
 Lighted Beacon
 Lighted Daymark
 Lighted Nightmark
 Lighted Sound
 Lighted Light Buoy
 Lighted Light Beacon
 Lighted Light Daymark Buoy
 Lighted Light Nightmark Buoy
 Lighted Light Sound Buoy
 Lighted Light Beacon Buoy
 Lighted Light Daymark Beacon Buoy
 Lighted Light Nightmark Beacon Buoy
 Lighted Light Sound Beacon Buoy

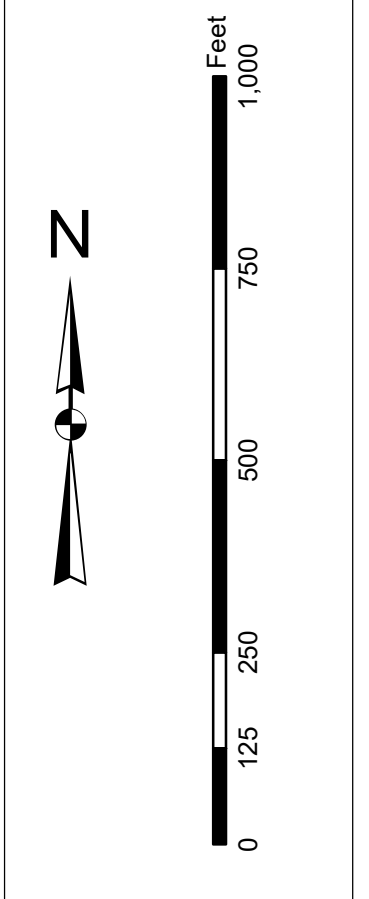
Other Symbols
 Buoy
 Beacon
 Daymark
 Nightmark
 Sound
 Light Buoy
 Light Beacon
 Light Daymark Buoy
 Light Nightmark Buoy
 Light Sound Buoy
 Light Beacon Buoy
 Light Daymark Beacon Buoy
 Light Nightmark Beacon Buoy
 Light Sound Beacon Buoy

Designed By:	Survey Date:	Production Date:
Reviewed By:	21 JUNE 2022	29 JUNE 2022
Revised By:	13 JUN 2022	
Scale:	1 inch = 250 feet	
Projection:	NAD 1983 StatePlane South Carolina FIPS 3800 Feet Intl	
U.S. Army Corps of Engineers Charleston District Office Navigation Branch 804 MacLeod Ave Charleston, SC 29403 843-328-8000	Project Reference Number: PC02010	Survey State: SOUTH CAROLINA
	Survey Year: 2022	Chart Condition: CONDITION

Charleston Entrance Channel Survey
The information depicted on this map represents the results of surveys made on the dates indicated and is not intended to be used for any other purpose. The user is responsible for determining the accuracy and reliability of the information on this chart. The user is encouraged to use all prudent safety measures.
Concluded on: 21 JUNE 2022
Charleston, South Carolina



Production Notes:
1. This chart is a preliminary product and is not for navigation. It is intended for informational purposes only. It is not intended to be used for navigation or to determine the location of any structure. It is intended to be used for informational purposes only.
2. The information on this chart is derived from the following sources:
a. Bathymetry: 1:15,000 scale, 2018-2022
b. Hydrography: 1:15,000 scale, 2018-2022
c. Obstructions: 1:15,000 scale, 2018-2022
d. Other: 1:15,000 scale, 2018-2022
3. The information on this chart is derived from the following sources:
a. Bathymetry: 1:15,000 scale, 2018-2022
b. Hydrography: 1:15,000 scale, 2018-2022
c. Obstructions: 1:15,000 scale, 2018-2022
d. Other: 1:15,000 scale, 2018-2022
4. This chart is a preliminary product and is not for navigation. It is intended for informational purposes only. It is not intended to be used for navigation or to determine the location of any structure. It is intended to be used for informational purposes only.



Legend:

- Obstructions:**
 - Red circle: Obstruction with light
 - Red circle with 'X': Obstruction with light and sound
 - Black circle: Obstruction with sound
 - Black circle with 'X': Obstruction with sound and light
 - Black circle with 'S': Obstruction with sound and light, daymark
 - Black circle with 'L': Obstruction with sound and light, nightmark
 - Black circle with 'TL': Obstruction with sound and light, topmark
 - Black circle with 'BL': Obstruction with sound and light, bottommark
 - Black circle with 'TLBL': Obstruction with sound and light, top and bottommark
 - Black circle with 'TLBL' (dashed): Obstruction with sound and light, top and bottommark, daymark
 - Black circle with 'TLBL' (dashed) (inverted): Obstruction with sound and light, top and bottommark, nightmark
 - Black circle with 'TLBL' (dashed) (inverted) (inverted): Obstruction with sound and light, top and bottommark, daymark, inverted
 - Black circle with 'TLBL' (dashed) (inverted) (inverted) (inverted): Obstruction with sound and light, top and bottommark, nightmark, inverted
- Other Symbols:**
 - Black circle with 'X' (inverted): Obstruction with sound and light, topmark, inverted
 - Black circle with 'X' (inverted) (inverted): Obstruction with sound and light, bottommark, inverted
 - Black circle with 'X' (inverted) (inverted) (inverted): Obstruction with sound and light, top and bottommark, inverted
 - Black circle with 'X' (inverted) (inverted) (inverted) (inverted): Obstruction with sound and light, top and bottommark, daymark, inverted
 - Black circle with 'X' (inverted) (inverted) (inverted) (inverted) (inverted): Obstruction with sound and light, top and bottommark, nightmark, inverted

U.S. Army Corps of Engineers Charleston District Charleston, South Carolina 843-325-8000	Designed By: Jethro Software v3.82 Reviewed By: Jethro Software v3.82 Scale: 1" = 15,000 feet Projection: NAD 1983 StatePlane South Carolina FIPS 3900 Feet Int	Survey Date: 21 JUNE 2022 Production Date: 29 JUNE 2022 Project Reference Number: 18030010 Survey Cycle: CONDITION
---	--	---

Charleston Entrance Channel Survey
The information depicted on this map represents the results of surveys made on the dates indicated and call on only the conditions existing at that time.
Concluded on: 21 JUNE 2022
Charleston, South Carolina