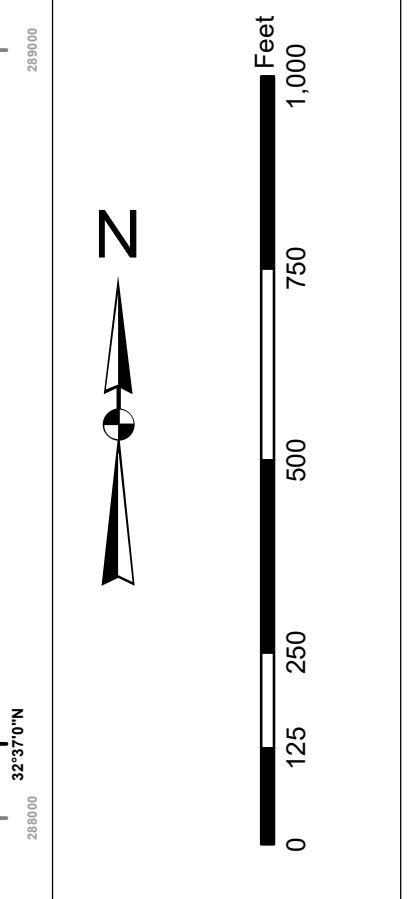




In accordance with the U.S. Army Corps of Engineers, Charleston District Office, Navigation Channel to be used for other purposes, but not limited to, for the purpose of navigation, the information shown on this map is for informational purposes only. It is not intended to be used for navigation. The information shown on this map is for informational purposes only. It is not intended to be used for navigation. The information shown on this map is for informational purposes only. It is not intended to be used for navigation.

Production Notes:  
1. This map is a preliminary map.  
2. The information shown on this map is for informational purposes only.  
3. The information shown on this map is for informational purposes only.  
4. The information shown on this map is for informational purposes only.  
5. The information shown on this map is for informational purposes only.



**Legend**

**Channel**  
 - Blue: Channel  
 - Purple: Bank  
 - Yellow: Obstruction  
 - Red: Obstruction  
 - Green: Obstruction  
 - Blue: Obstruction

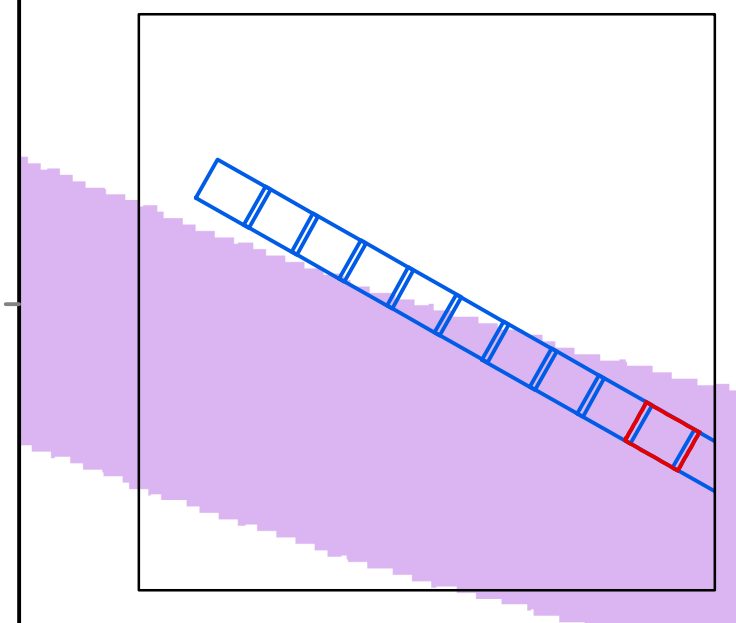
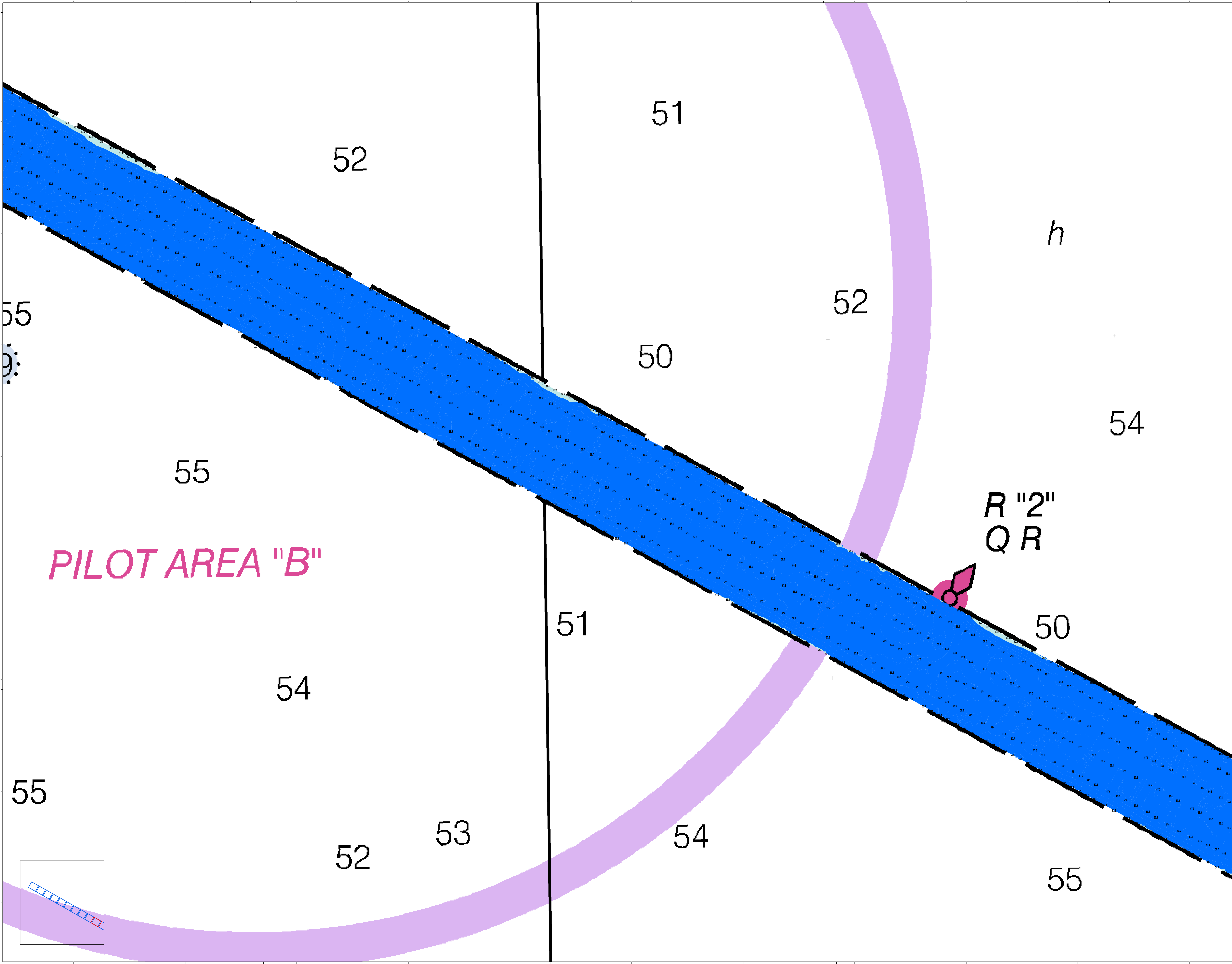
**Survey**  
 - Red: Survey  
 - Blue: Survey  
 - Green: Survey  
 - Yellow: Survey  
 - Purple: Survey

**Other**  
 - Black: Other  
 - White: Other  
 - Grey: Other  
 - Light Blue: Other  
 - Light Green: Other  
 - Light Purple: Other

U.S. Army Corps of Engineers Charleston District Office Charleston, South Carolina 843-328-8000	Designed By: J. H. H. H. Reviewed By: J. H. H. H. Scale: 1 inch = 250 feet Projection: NAD 1983 StatePlane South Carolina FIPS 3800 Feet Intl	Survey Date: 7 DEC 2022 Project Reference Number: 13 DEC 2022 Survey Station: 13 DEC 2022 Condition: CONDITION	Production Date: 13 DEC 2022 Project Reference Number: 13 DEC 2022 Survey Station: 13 DEC 2022 Condition: CONDITION
--	--	---	--

**Charleston Entrance Channel Survey**  
The information depicted on this map represents the results of surveys made on the dates indicated and call on the surveys on which they are based. The information shown on this map is for informational purposes only. It is not intended to be used for navigation. The information shown on this map is for informational purposes only. It is not intended to be used for navigation. The information shown on this map is for informational purposes only. It is not intended to be used for navigation.

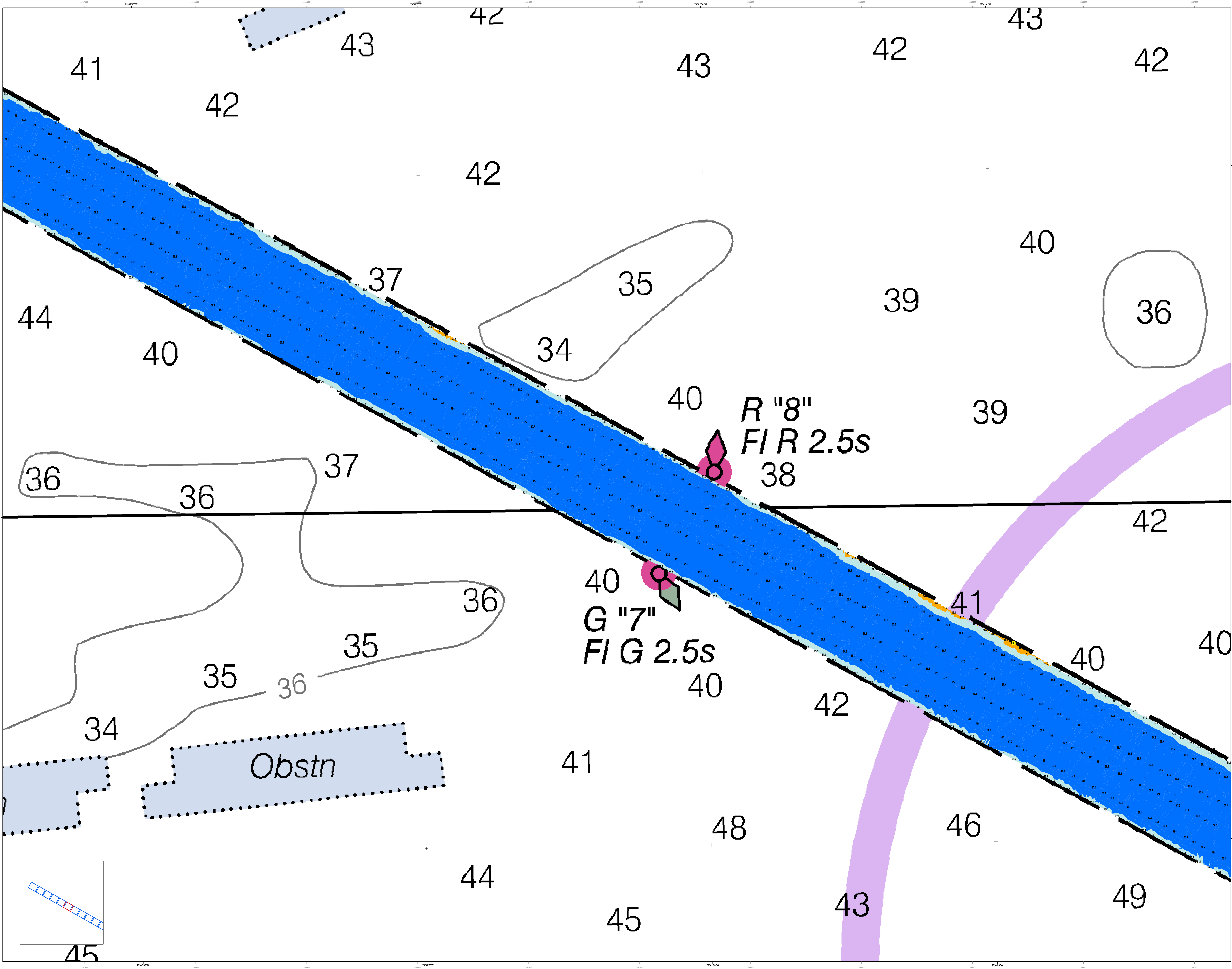
Charleston, South Carolina  
Concluded on: 7 DEC 2022





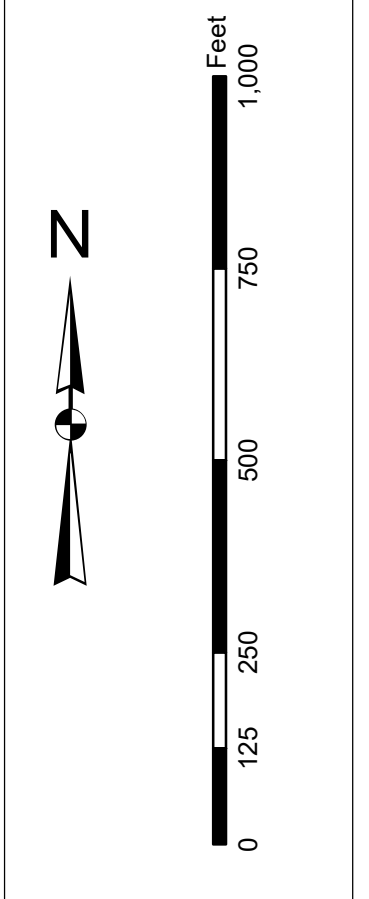






In accordance with the U.S. Army Corps of Engineers, Charleston District Office, Navigation Branch's policy for charting, hydrographic data is limited to a two-foot depth contour. The charting of depths less than two feet is not intended to be used for navigation purposes. These data have been developed from the best available information and are not intended to be used for navigation purposes. The charting of depths less than two feet is not intended to be used for navigation purposes. The charting of depths less than two feet is not intended to be used for navigation purposes.

**Production Notes:**  
1. This chart is the responsibility of the Hydrographic Branch.  
2. All soundings are in feet unless otherwise noted.  
3. Obstructions are 10 feet and 20 feet unless otherwise noted.  
4. All depths are based on Mean Low Water (MLW) unless otherwise noted.  
5. Charting is in accordance with the U.S. Army Corps of Engineers, Charleston District Office, Navigation Branch's policy for charting, hydrographic data is limited to a two-foot depth contour.



**Legend**

**Soundings:** 2-10, 11-20, 21-30, 31-40, 41-50, 51-60, 61-70, 71-80, 81-90, 91-100, 100+

**Obstructions:** 10, 20, 30, 40, 50, 60, 70, 80, 90, 100

**Contours:** 2, 3, 4, 5, 6, 7, 8, 9, 10, 11, 12, 13, 14, 15, 16, 17, 18, 19, 20, 21, 22, 23, 24, 25, 26, 27, 28, 29, 30, 31, 32, 33, 34, 35, 36, 37, 38, 39, 40, 41, 42, 43, 44, 45, 46, 47, 48, 49, 50, 51, 52, 53, 54, 55, 56, 57, 58, 59, 60, 61, 62, 63, 64, 65, 66, 67, 68, 69, 70, 71, 72, 73, 74, 75, 76, 77, 78, 79, 80, 81, 82, 83, 84, 85, 86, 87, 88, 89, 90, 91, 92, 93, 94, 95, 96, 97, 98, 99, 100

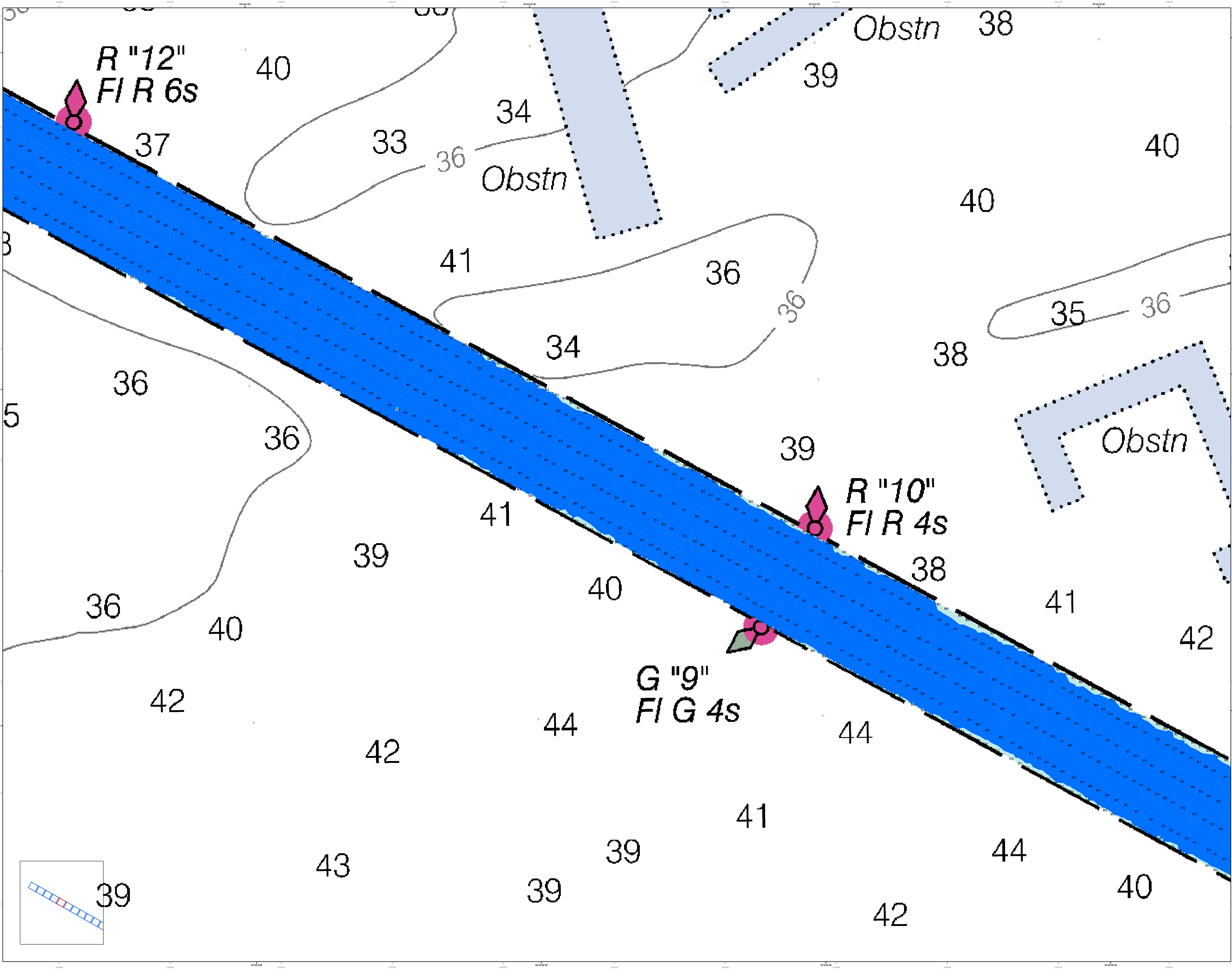
**Other Symbols:** Light, Buoy, Beacon, Spar, etc.

Designed By: jehydro	Software: v3.82	Production Date: 13 DEC 2022
Reviewed By: jehydro	Scale: 1:10,000	Project Reference Number: 10000000
Revised: 10/2022	Scale: 1 inch = 250 feet	Survey Type: CONDITION
U.S. Army Corps of Engineers Charleston District Navigation Branch Charleston, SC 29403	U.S. Army Corps of Engineers Charleston District Navigation Branch Charleston, SC 29403	U.S. Army Corps of Engineers Charleston District Navigation Branch Charleston, SC 29403

**Charleston Entrance Channel Survey**  
The information depicted on this map represents the results of surveys made on the dates indicated and is not intended to be used for navigation purposes. The charting of depths less than two feet is not intended to be used for navigation purposes. The charting of depths less than two feet is not intended to be used for navigation purposes.

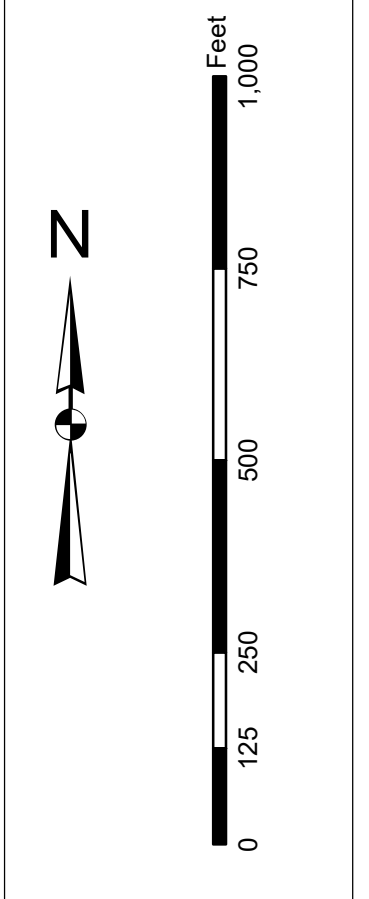
Concluded on: 7 DEC 2022

Charleston, South Carolina



In accordance with the U.S. Army Corps of Engineers, Charleston District Office, Navigation Channel to be used for other purposes, this map is intended to be used for navigation purposes only. It is not intended to be used for any other purpose. The information on this map is based on the best available data and is subject to change without notice. The user assumes all responsibility for the use of this map. The information on this map is not to be used for navigation purposes.

Production Notes:  
1. This map is a preliminary map.  
2. The information on this map is based on the best available data and is subject to change without notice.  
3. The information on this map is not to be used for navigation purposes.  
4. The information on this map is not to be used for navigation purposes.



**Legend**

**Obstn**  
 - Dashed outline: Obstruction  
 - Solid outline: Obstruction

**Navigation Markers**  
 - Red diamond: Red Buoy  
 - Green diamond: Green Buoy  
 - Yellow diamond: Yellow Buoy  
 - White diamond: White Buoy  
 - Black diamond: Black Buoy  
 - Red circle: Red Light  
 - Green circle: Green Light  
 - Yellow circle: Yellow Light  
 - White circle: White Light  
 - Black circle: Black Light

**Channel**  
 - Blue fill: Channel  
 - Dashed line: Channel Boundary  
 - Solid line: Channel Boundary

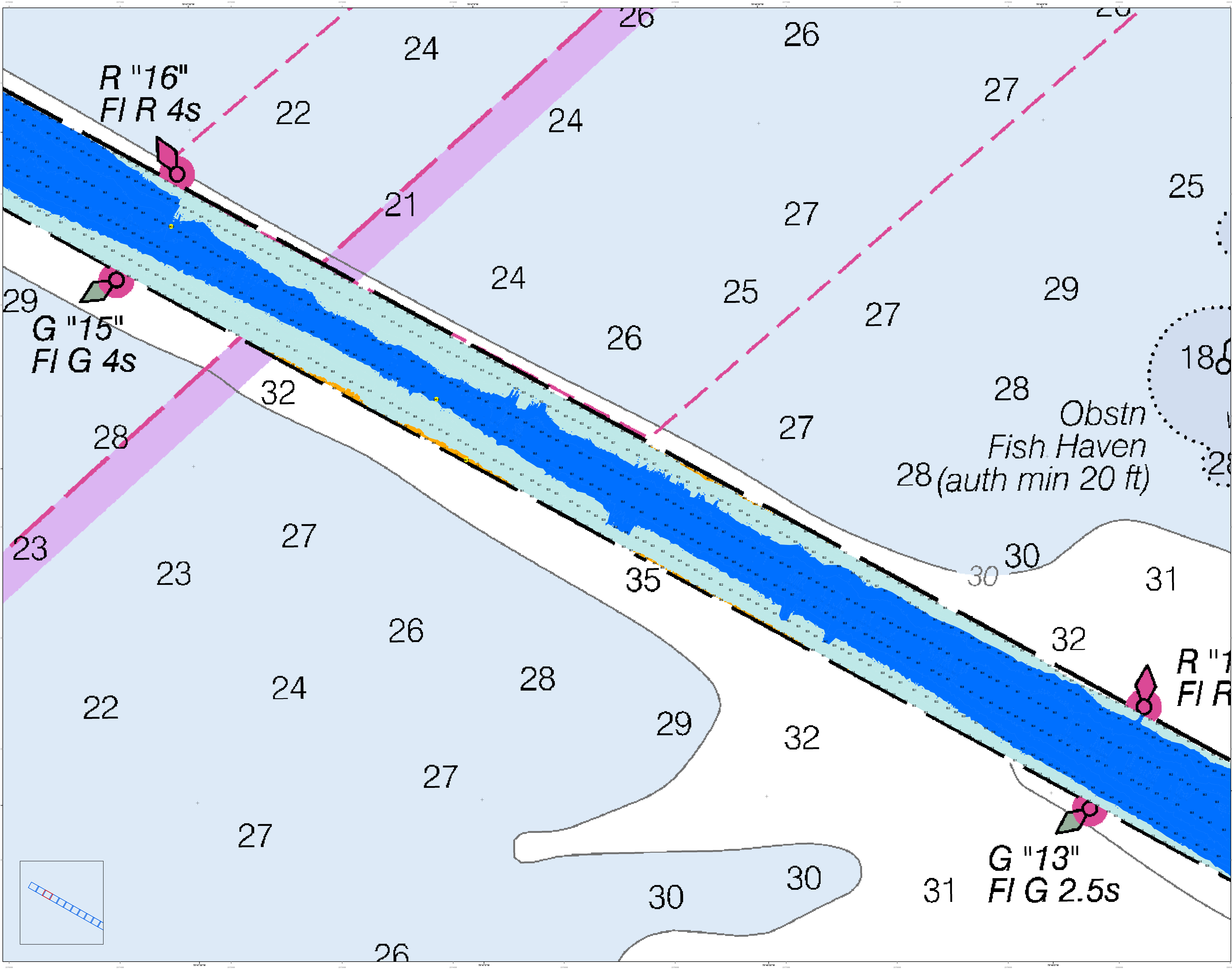
**Contour Lines**  
 - Solid line: Contour Line  
 - Dashed line: Contour Line

Designed By:	Survey Date:	Production Date:
Reviewed By:	7 DEC 2022	13 DEC 2022
Scale:	Project Reference Number:	
1:10,000	PC00010	
Scale:	Survey Scale:	
1 inch = 250 feet	CONDITION	
Projection:	MAD 1983 StatePlane South Carolina FPS 3800 Feet Intl	
	843-328-8000	

**Charleston Entrance Channel Survey**  
 The information depicted on this map represents the results of surveys made on the dates indicated and is subject to change without notice. The user assumes all responsibility for the use of this map. The information on this map is not to be used for navigation purposes.  
 Concluded on: 7 DEC 2022  
 Charleston, South Carolina

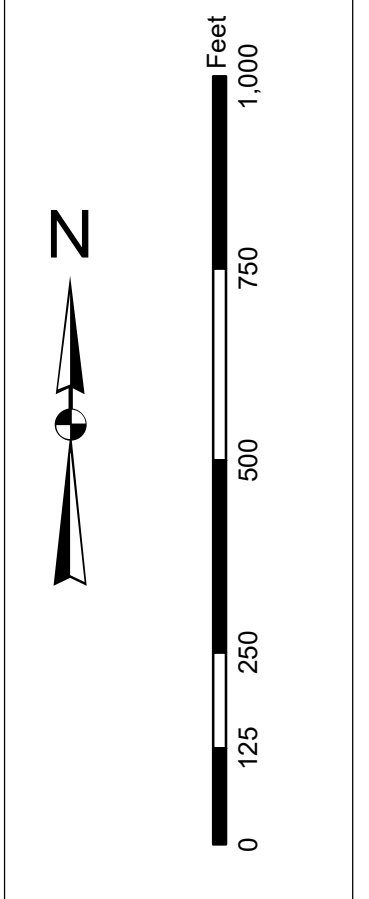






In accordance with the U.S. Army Corps of Engineers, Charleston District Office, Navigation Channel Safety for Areas Under Survey, this chart is intended to be used in conjunction with the general information on the chart. It is not intended to be used as a substitute for a full set of charts. There are no other charts available for this area. This chart is not intended to be used as a substitute for a full set of charts. There are no other charts available for this area. This chart is not intended to be used as a substitute for a full set of charts. There are no other charts available for this area.

Production Notes:  
1. This chart is the responsibility of the U.S. Army Corps of Engineers, Charleston District Office.  
2. All data are based on the latest available information.  
3. Changes are indicated by the date of the survey.  
4. All data are based on the latest available information.  
5. Changes are indicated by the date of the survey.



**Legend**

**Soundings:** 22, 23, 24, 25, 26, 27, 28, 29, 30, 31, 32, 33, 34, 35

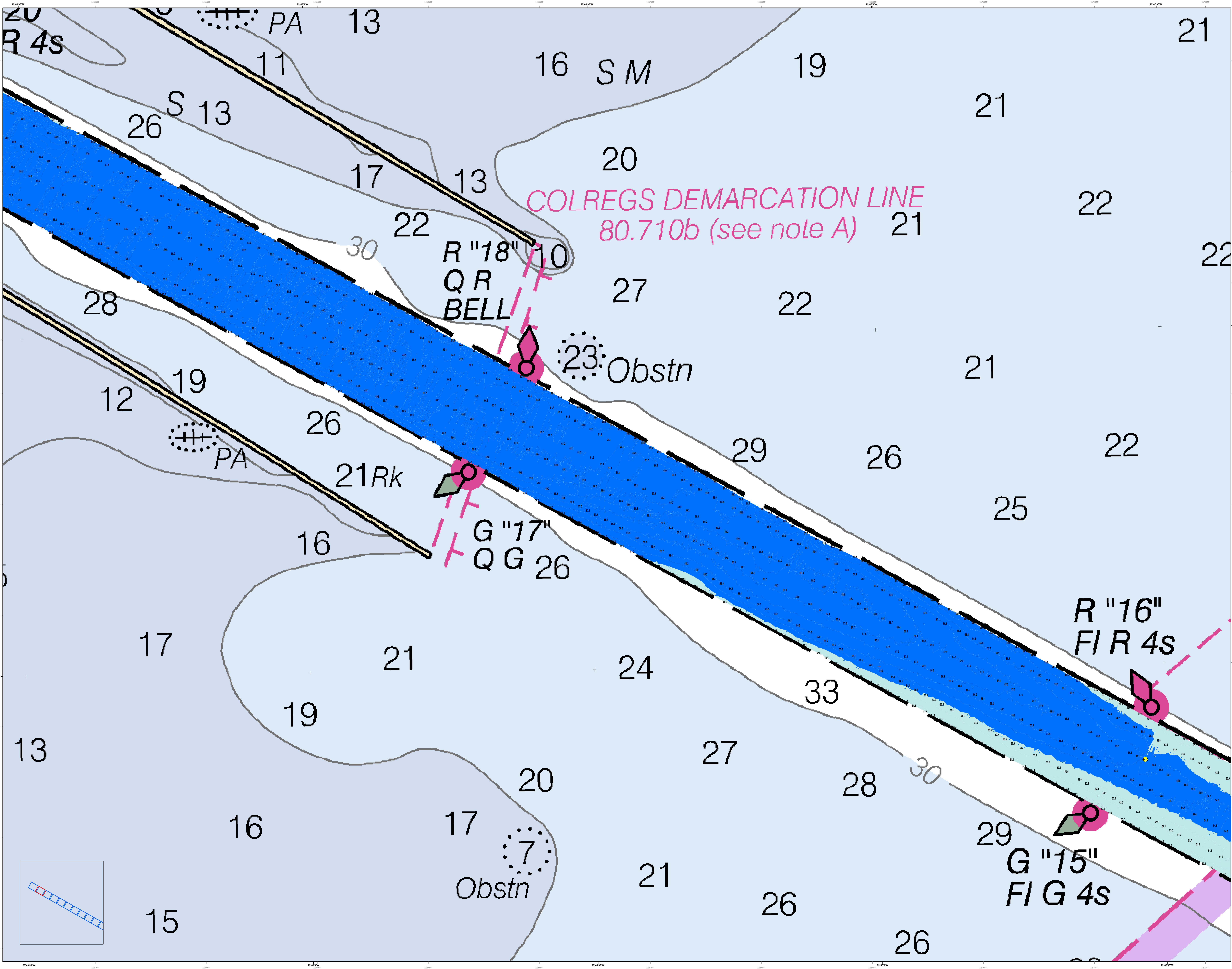
**Obstn:** Fish Haven 28 (auth min 20 ft)

**Navigation Lights:** R '16' FIR 4s, G '15' FIG 4s, G '13' FIG 2.5s, R '1' FIR

**Other Symbols:** [Various symbols for buoys, lights, and structures]

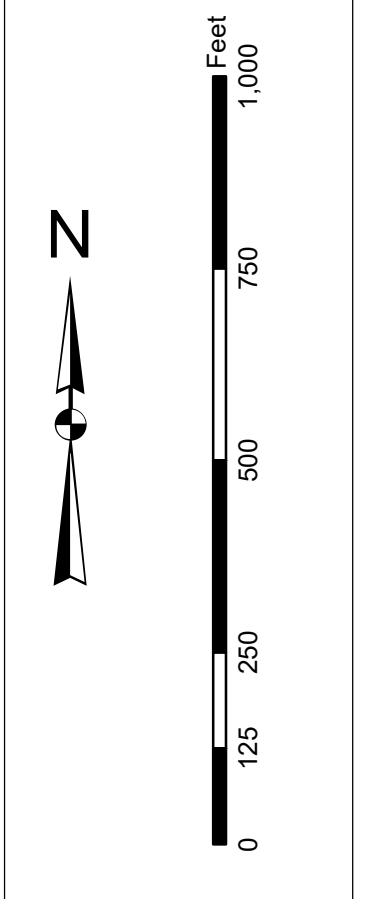
Designed By:	Survey Date:	Production Date:
Hydro Software v3.82	7 DEC 2022	13 DEC 2022
Reviewed By:	Project Reference Number:	
1:10,000	PC00010	
Scale:	Survey Year:	CONDITION
1 inch = 250 feet		
Projection:	MAD 1983 StatePlane South Carolina FIPS 3900 Feet Intl	

**Charleston Entrance Channel Survey**  
The information depicted on this map represents the results of surveys made on the dates indicated and call on only the conditions existing at that time.  
Concluded on: 7 DEC 2022  
Charleston, South Carolina



In accordance with the U.S. Army Corps of Engineers, Charleston District Office, Navigation Branch's policy for charting, the information depicted on this map represents the results of surveys made on the dates indicated and conditions existing at that time. The information is for general use only and is not intended to be used for navigation. The information is not intended to be used for navigation. The information is not intended to be used for navigation.

Production Notes:  
1. This chart is produced in accordance with the U.S. Army Corps of Engineers, Charleston District Office, Navigation Branch's policy for charting.  
2. The information is for general use only and is not intended to be used for navigation.  
3. The information is not intended to be used for navigation.  
4. The information is not intended to be used for navigation.



**Legend**

**Soundings:** 10, 11, 12, 13, 14, 15, 16, 17, 18, 19, 20, 21, 22, 23, 24, 25, 26, 27, 28, 29, 30, 31, 32, 33, 34, 35, 36, 37, 38, 39, 40

**Contours:** 10, 11, 12, 13, 14, 15, 16, 17, 18, 19, 20, 21, 22, 23, 24, 25, 26, 27, 28, 29, 30, 31, 32, 33, 34, 35, 36, 37, 38, 39, 40

**Obstructions:** 7, 23

**Other Symbols:** PA, R "18" Q R BELL, G "17" Q G 26, R "16" FIR 4s, G "15" FIG 4s

Designed By:	Survey Date:	Production Date:
Reviewed By:	7 DEC 2022	13 DEC 2022
Scale:	Project Reference Number:	Project Reference Number:
1 inch = 250 feet	13000	13000
Projection:	Survey System:	Survey System:
NAD 1983 StatePlane South Carolina FIPS 3800 Feet Intl	CONDITON	CONDITON

**Charleston Entrance Channel Survey**  
The information depicted on this map represents the results of surveys made on the dates indicated and conditions existing at that time. The information is for general use only and is not intended to be used for navigation. The information is not intended to be used for navigation.

