

U.S. Army Corps of Engineers
Charleston District

Production Notes:
 1. This chart is produced in accordance with the Hydrographic Surveying Manual, 11th Edition, and the Hydrographic Surveying Manual, 12th Edition, as applicable.
 2. The information depicted on this chart represents the results of surveys made on the dates indicated and is not intended to be used for navigation without the aid of a general chart or other information.
 3. Obstructions are not shown unless they are of a nature to be of general interest.
 4. The information depicted on this chart is not intended to be used for navigation without the aid of a general chart or other information.
 5. The information depicted on this chart is not intended to be used for navigation without the aid of a general chart or other information.

Legend:
 Colors and symbols used for various navigational features and depths.

Scale:
 0 125 250 500 750 1000 Feet

Production Date: 18 DEC 2018
Project Reference Number: 150101
Survey Type: CPD001D
Condition: CONDITION

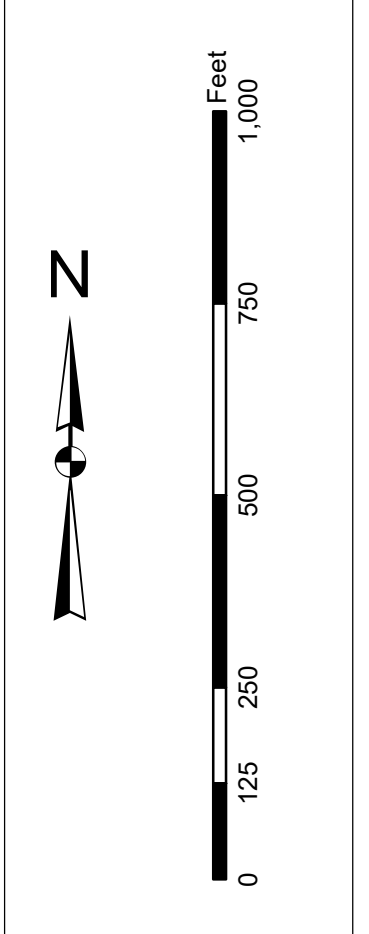
Designed By: Jethro Software v3.02
Reviewed By: Jethro Software v3.02
Scale: 1 inch = 348 feet
Projection: NAD 1983 StatePlane South Carolina FIPS 3200 Feet

U.S. Army Corps of Engineers
 CHARLESTON DISTRICT
 CHARLESTON, SOUTH CAROLINA
 36th AVENUE, SOUTH BRANCH
 CHARLESTON, SC 29405
 CESAC-GIS@USACE.ARMY.MIL

Charleston Harbor Channel
 The information depicted on this chart represents the results of surveys made on the dates indicated and is not intended to be used for navigation without the aid of a general chart or other information.
 Concluded on: 18 DEC 2018
 Charleston, South Carolina

SHEET REFERENCE NUMBER: C002
SHEET 1 OF 7

Production Notes:
 1. This map is produced in accordance with the standards of the U.S. Army Corps of Engineers, Hydrographic Surveying Manual (USACE HSM) and the National Hydrographic Surveying Manual (NHSM).
 2. This map is based on data collected from the following sources:
 a. Hydrographic Surveying Manual (USACE HSM)
 b. National Hydrographic Surveying Manual (NHSM)
 c. Other sources as noted on the map.
 3. The data on this map is current as of the date of publication.
 4. The data on this map is subject to change without notice.
 5. The data on this map is not to be used for navigation purposes.
 6. The data on this map is not to be used for engineering purposes.
 7. The data on this map is not to be used for legal purposes.
 8. The data on this map is not to be used for any other purpose.

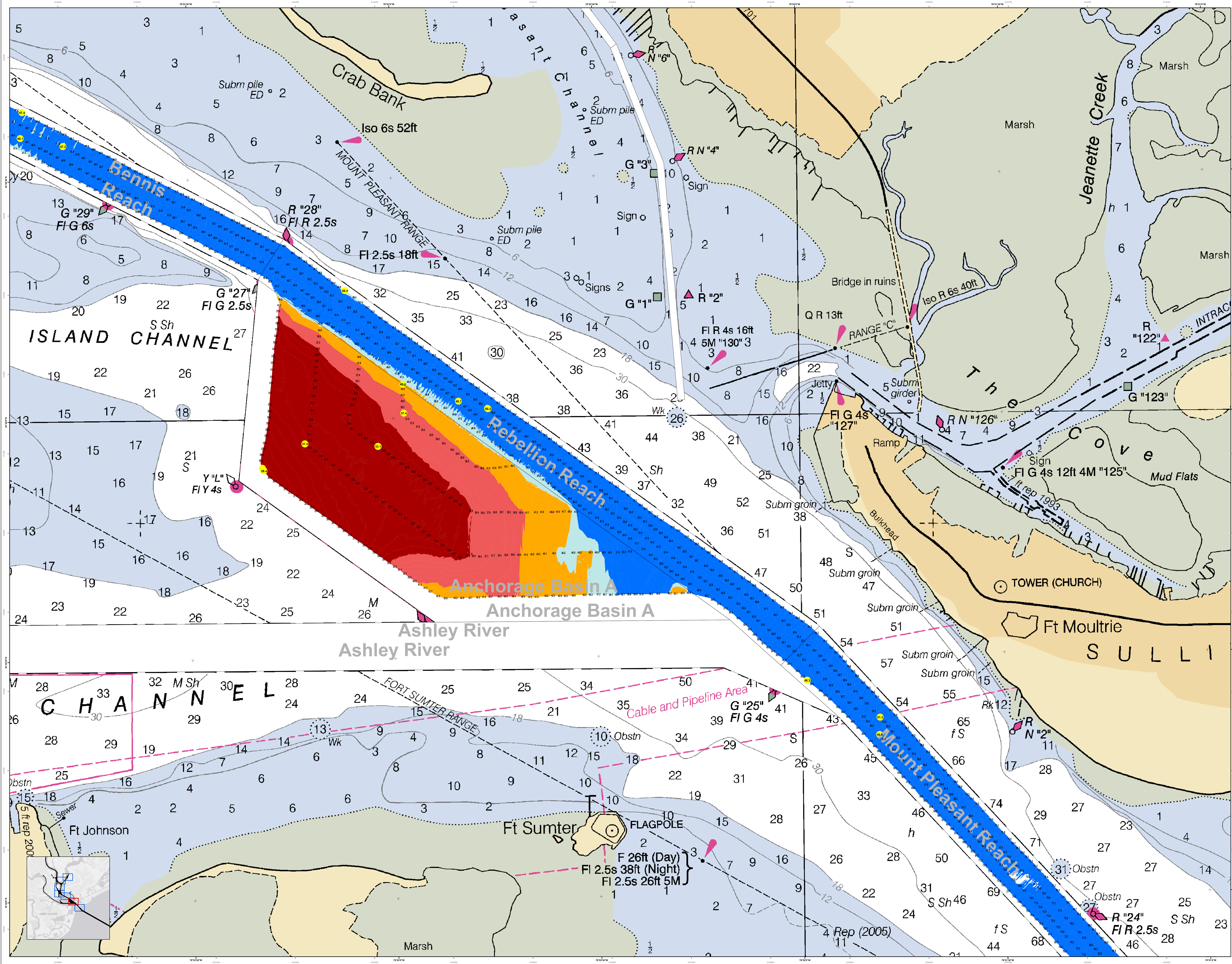


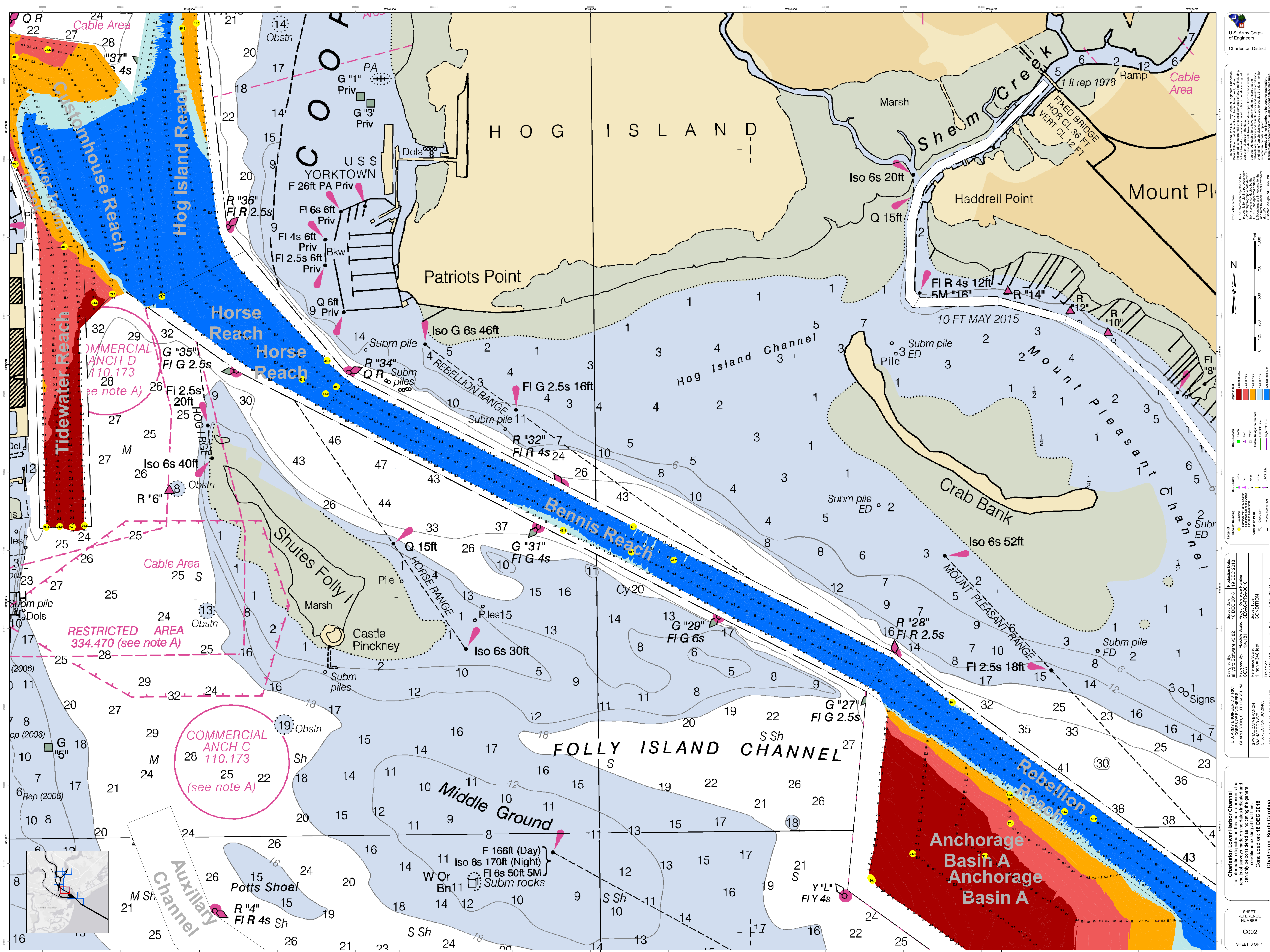
Legend:

- Soundings:**
 - Shaded Blue: 10 to 20 fathoms
 - Light Blue: 20 to 30 fathoms
 - Medium Blue: 30 to 40 fathoms
 - Dark Blue: 40 to 50 fathoms
 - Very Dark Blue: 50 to 60 fathoms
 - Black: 60 to 70 fathoms
 - Dark Purple: 70 to 80 fathoms
 - Light Purple: 80 to 90 fathoms
 - Medium Purple: 90 to 100 fathoms
 - Dark Purple: 100 to 110 fathoms
 - Very Dark Purple: 110 to 120 fathoms
 - Black: 120 to 130 fathoms
 - Dark Purple: 130 to 140 fathoms
 - Light Purple: 140 to 150 fathoms
 - Medium Purple: 150 to 160 fathoms
 - Dark Purple: 160 to 170 fathoms
 - Very Dark Purple: 170 to 180 fathoms
 - Black: 180 to 190 fathoms
 - Dark Purple: 190 to 200 fathoms
 - Light Purple: 200 to 210 fathoms
 - Medium Purple: 210 to 220 fathoms
 - Dark Purple: 220 to 230 fathoms
 - Very Dark Purple: 230 to 240 fathoms
 - Black: 240 to 250 fathoms
 - Dark Purple: 250 to 260 fathoms
 - Light Purple: 260 to 270 fathoms
 - Medium Purple: 270 to 280 fathoms
 - Dark Purple: 280 to 290 fathoms
 - Very Dark Purple: 290 to 300 fathoms
 - Black: 300 to 310 fathoms
 - Dark Purple: 310 to 320 fathoms
 - Light Purple: 320 to 330 fathoms
 - Medium Purple: 330 to 340 fathoms
 - Dark Purple: 340 to 350 fathoms
 - Very Dark Purple: 350 to 360 fathoms
 - Black: 360 to 370 fathoms
 - Dark Purple: 370 to 380 fathoms
 - Light Purple: 380 to 390 fathoms
 - Medium Purple: 390 to 400 fathoms
 - Dark Purple: 400 to 410 fathoms
 - Very Dark Purple: 410 to 420 fathoms
 - Black: 420 to 430 fathoms
 - Dark Purple: 430 to 440 fathoms
 - Light Purple: 440 to 450 fathoms
 - Medium Purple: 450 to 460 fathoms
 - Dark Purple: 460 to 470 fathoms
 - Very Dark Purple: 470 to 480 fathoms
 - Black: 480 to 490 fathoms
 - Dark Purple: 490 to 500 fathoms
 - Light Purple: 500 to 510 fathoms
 - Medium Purple: 510 to 520 fathoms
 - Dark Purple: 520 to 530 fathoms
 - Very Dark Purple: 530 to 540 fathoms
 - Black: 540 to 550 fathoms
 - Dark Purple: 550 to 560 fathoms
 - Light Purple: 560 to 570 fathoms
 - Medium Purple: 570 to 580 fathoms
 - Dark Purple: 580 to 590 fathoms
 - Very Dark Purple: 590 to 600 fathoms
 - Black: 600 to 610 fathoms
 - Dark Purple: 610 to 620 fathoms
 - Light Purple: 620 to 630 fathoms
 - Medium Purple: 630 to 640 fathoms
 - Dark Purple: 640 to 650 fathoms
 - Very Dark Purple: 650 to 660 fathoms
 - Black: 660 to 670 fathoms
 - Dark Purple: 670 to 680 fathoms
 - Light Purple: 680 to 690 fathoms
 - Medium Purple: 690 to 700 fathoms
 - Dark Purple: 700 to 710 fathoms
 - Very Dark Purple: 710 to 720 fathoms
 - Black: 720 to 730 fathoms
 - Dark Purple: 730 to 740 fathoms
 - Light Purple: 740 to 750 fathoms
 - Medium Purple: 750 to 760 fathoms
 - Dark Purple: 760 to 770 fathoms
 - Very Dark Purple: 770 to 780 fathoms
 - Black: 780 to 790 fathoms
 - Dark Purple: 790 to 800 fathoms
 - Light Purple: 800 to 810 fathoms
 - Medium Purple: 810 to 820 fathoms
 - Dark Purple: 820 to 830 fathoms
 - Very Dark Purple: 830 to 840 fathoms
 - Black: 840 to 850 fathoms
 - Dark Purple: 850 to 860 fathoms
 - Light Purple: 860 to 870 fathoms
 - Medium Purple: 870 to 880 fathoms
 - Dark Purple: 880 to 890 fathoms
 - Very Dark Purple: 890 to 900 fathoms
 - Black: 900 to 910 fathoms
 - Dark Purple: 910 to 920 fathoms
 - Light Purple: 920 to 930 fathoms
 - Medium Purple: 930 to 940 fathoms
 - Dark Purple: 940 to 950 fathoms
 - Very Dark Purple: 950 to 960 fathoms
 - Black: 960 to 970 fathoms
 - Dark Purple: 970 to 980 fathoms
 - Light Purple: 980 to 990 fathoms
 - Medium Purple: 990 to 1000 fathoms
- Obstructions:**
 - Red Triangle: Obstruction
 - Black Triangle: Obstruction
 - Black Circle: Obstruction
 - Black Square: Obstruction
 - Black Diamond: Obstruction
 - Black Hexagon: Obstruction
 - Black Octagon: Obstruction
 - Black Star: Obstruction
 - Black Circle with Center: Obstruction
 - Black Square with Center: Obstruction
 - Black Diamond with Center: Obstruction
 - Black Hexagon with Center: Obstruction
 - Black Star with Center: Obstruction
 - Black Circle with Center and Stroke: Obstruction
 - Black Square with Center and Stroke: Obstruction
 - Black Diamond with Center and Stroke: Obstruction
 - Black Hexagon with Center and Stroke: Obstruction
 - Black Star with Center and Stroke: Obstruction
- Other Symbols:**
 - Red Triangle with Stroke: Obstruction
 - Black Triangle with Stroke: Obstruction
 - Black Circle with Stroke: Obstruction
 - Black Square with Stroke: Obstruction
 - Black Diamond with Stroke: Obstruction
 - Black Hexagon with Stroke: Obstruction
 - Black Star with Stroke: Obstruction
 - Black Circle with Stroke and Center: Obstruction
 - Black Square with Stroke and Center: Obstruction
 - Black Diamond with Stroke and Center: Obstruction
 - Black Hexagon with Stroke and Center: Obstruction
 - Black Star with Stroke and Center: Obstruction

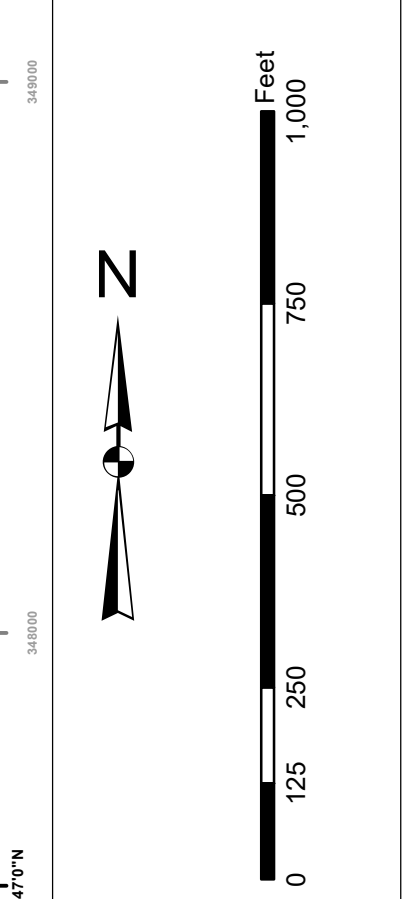
Designed By:	U.S. Army Corps of Engineers Charleston District Charleston, South Carolina
Reviewed By:	U.S. Army Corps of Engineers Charleston District Charleston, South Carolina
Approved By:	U.S. Army Corps of Engineers Charleston District Charleston, South Carolina
Scale:	1 inch = 348 feet
Projection:	NAD 1983 StatePlane South Carolina FIPS 3200 Feet
Survey Date:	18 DEC 2018
Production Date:	19 DEC 2018
Project Reference Number:	14151
Sheet Number:	C002
Sheet Title:	CONDITION

Charleston Lower Harbor Channel
 The information depicted on this map represents the results of surveys made on the dates indicated and can only be used for general information purposes. No warranty is made as to the accuracy of the information or the conditions existing at that time.
 Concluded on: 18 DEC 2018
 Charleston, South Carolina





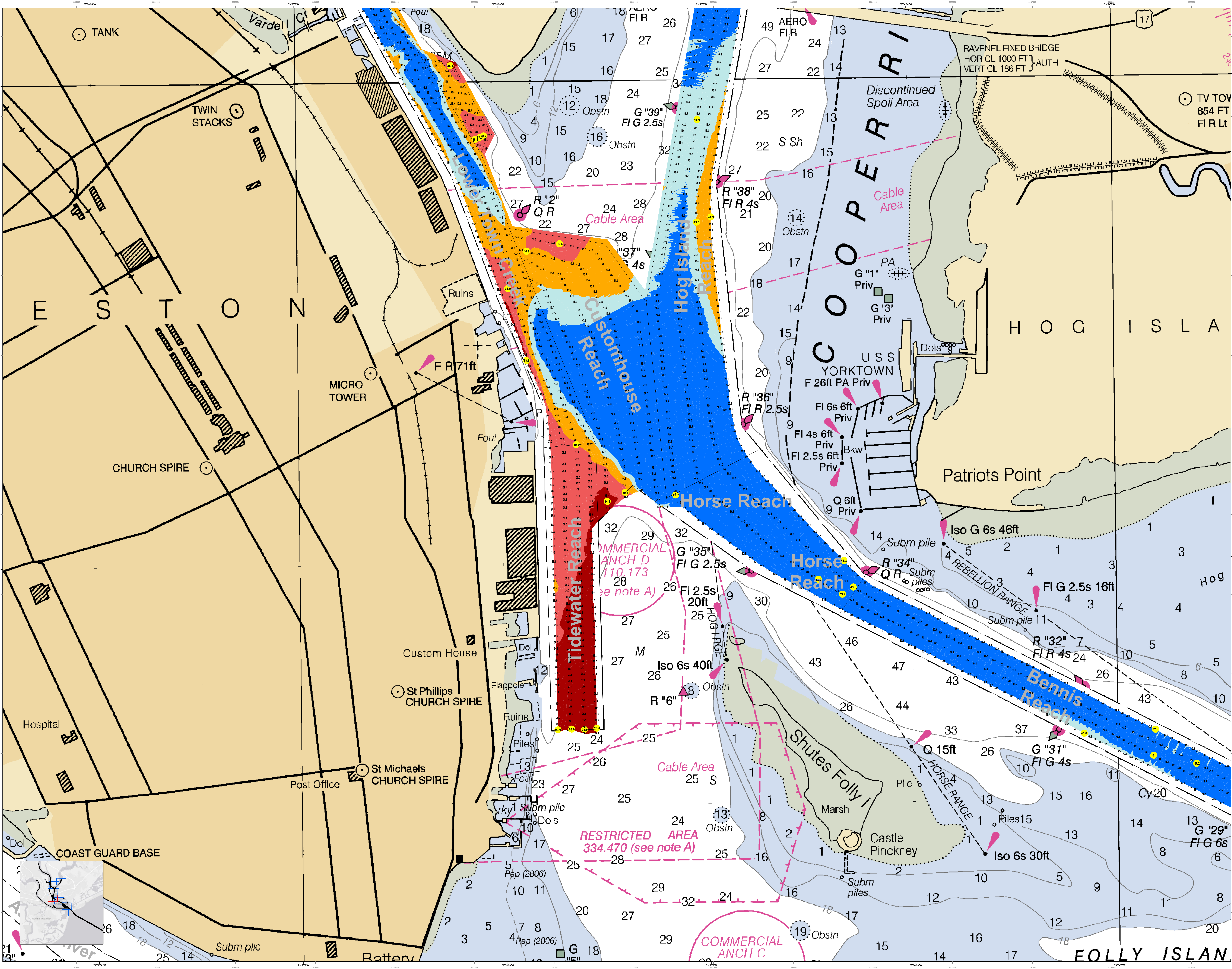
In the event of an emergency, the U.S. Army Corps of Engineers, Charleston District Office, should be notified immediately by telephone, radio, or other means to advise of any change in conditions which may affect the safety of navigation. This chart is not to be used for navigation purposes unless it is approved by the U.S. Army Corps of Engineers, Charleston District Office. This chart is not to be used for navigation purposes unless it is approved by the U.S. Army Corps of Engineers, Charleston District Office. This chart is not to be used for navigation purposes unless it is approved by the U.S. Army Corps of Engineers, Charleston District Office.



Legend

- Soundings: Depth in fathoms, meters, and feet
- Obstructions: Obstruction, Submerged Pile, Pile, etc.
- Navigation Aids: Light, Buoy, etc.
- Other: Cable Area, Restricted Area, etc.

Designed by:	Hydrographic Survey	Production Date:	18 DEC 2018
Reviewed by:	Project Reference Number:	Project Reference Number:	19 DEC 2018
Scale:	1:10,000	Scale:	1:10,000
Projection:	NAD 1983 StatePlane South Carolina FIPS 3900 Feet	Projection:	NAD 1983 StatePlane South Carolina FIPS 3900 Feet



U.S. Army Corps of Engineers
Charleston District

Production Note:
 1. This chart was produced using the latest available data.
 2. This chart is not to be used for navigation purposes.
 3. This chart is not to be used for engineering purposes.
 4. This chart is not to be used for legal purposes.
 5. This chart is not to be used for any other purpose.

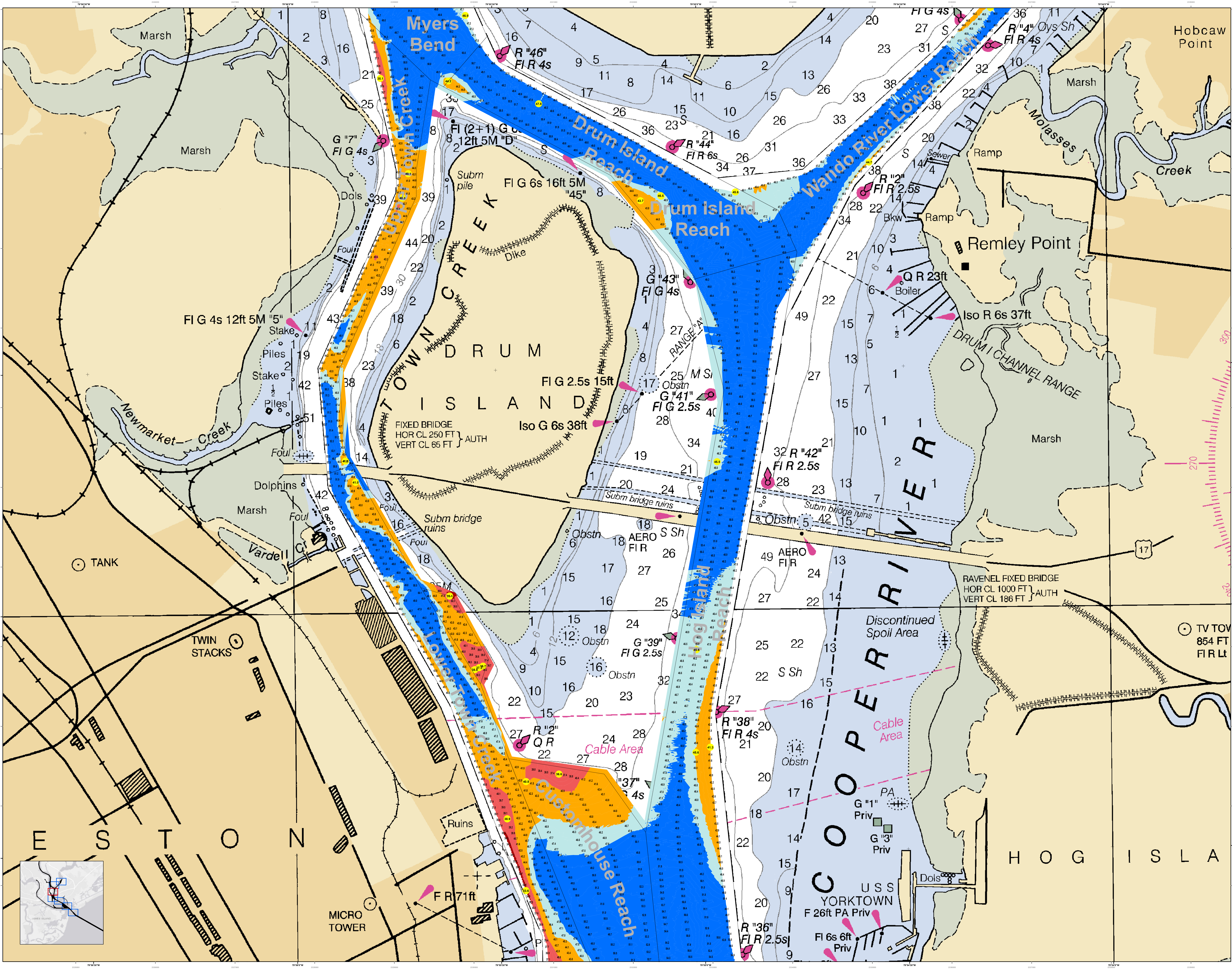
Legend:
 Soundings: 1-10, 11-20, 21-30, 31-40, 41-50, 51-60, 61-70, 71-80, 81-90, 91-100
 Obstructions: 1-10, 11-20, 21-30, 31-40, 41-50, 51-60, 61-70, 71-80, 81-90, 91-100
 Navigational Aids: 1-10, 11-20, 21-30, 31-40, 41-50, 51-60, 61-70, 71-80, 81-90, 91-100
 Structures: 1-10, 11-20, 21-30, 31-40, 41-50, 51-60, 61-70, 71-80, 81-90, 91-100
 Spoil Areas: 1-10, 11-20, 21-30, 31-40, 41-50, 51-60, 61-70, 71-80, 81-90, 91-100
 Restricted Areas: 1-10, 11-20, 21-30, 31-40, 41-50, 51-60, 61-70, 71-80, 81-90, 91-100

Scale: 1" = 348 feet
Projection: NAD 1983 StatePlane South Carolina FIPS 3200 Feet

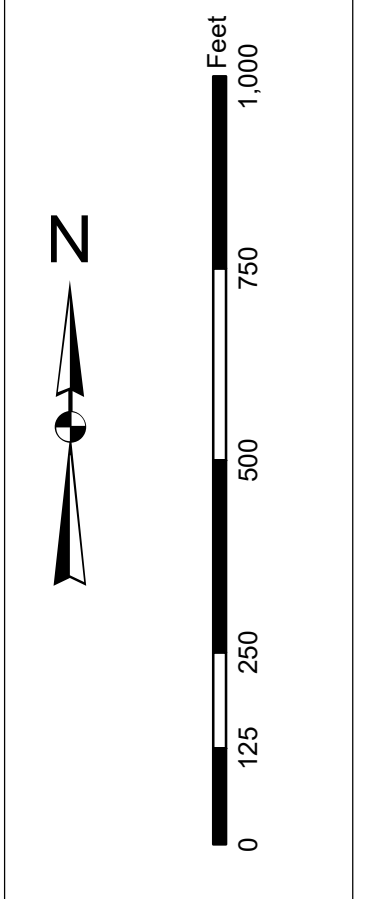
U.S. Army Corps of Engineers
 CHARLESTON DISTRICT
 CHARLESTON, SOUTH CAROLINA
 CHARLESTON BRANCH
 334.470 (see note A)
 CONCLUSION
 18 DEC 2018

Charleston Lower Harbor Channel
 The information depicted on this map represents the results of surveys made on the dates indicated and on other surveys on file at the time of general revision. It is not to be used for navigation purposes. It is the responsibility of the user to determine if the information is current and accurate for their purpose.
 Concluded on: 18 DEC 2018
 Charleston, South Carolina

SHEET REFERENCE NUMBER
 C002
 SHEET 4 OF 7



Production Notes:
 1. This is a preliminary chart. It is not to be used for navigation.
 2. The information on this chart is based on the latest available data.
 3. The information on this chart is not to be used for navigation.
 4. The information on this chart is not to be used for navigation.
 5. The information on this chart is not to be used for navigation.



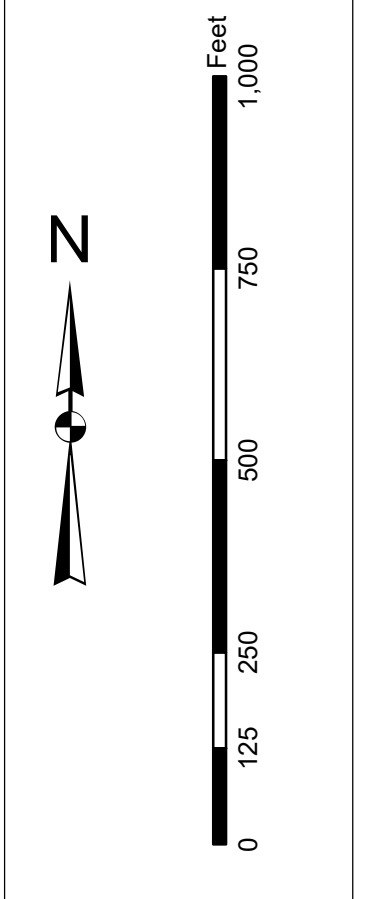
Legend:

Symbol	Description
(Color swatches)	Depth Soundings
(Color swatches)	Obstructions
(Color swatches)	Navigation Aids
(Color swatches)	Landmarks
(Color swatches)	Other Features

U.S. Army Corps of Engineers Charleston District Charleston, South Carolina Savannah Branch Barracks Lane Charleston, SC 29405 CESAC-GIS@USACE.ARMY.MIL	Survey Date: 18 DEC 2018 Production Date: 19 DEC 2018 Project Reference Number: 18030001D Survey Type: CONSTRUCTION Condition: AS SHOWN
---------------------------------------------------------------------------------------------------------------------------------------------------------------------------	-----------------------------------------------------------------------------------------------------------------------------------------------------

Charleston Lower Harbor Channel
 The information depicted on this map represents the results of surveys made on the dates indicated and can only be used for navigation under the general conditions existing at that time.
 Concluded on: 18 DEC 2018
 Charleston, South Carolina

Production Notes:
1. This is a preliminary drawing.
2. It is not to be used for construction purposes.
3. It is not to be used for navigation purposes.
4. It is not to be used for any other purpose.
5. It is not to be used for any other purpose.
6. It is not to be used for any other purpose.
7. It is not to be used for any other purpose.
8. It is not to be used for any other purpose.
9. It is not to be used for any other purpose.
10. It is not to be used for any other purpose.

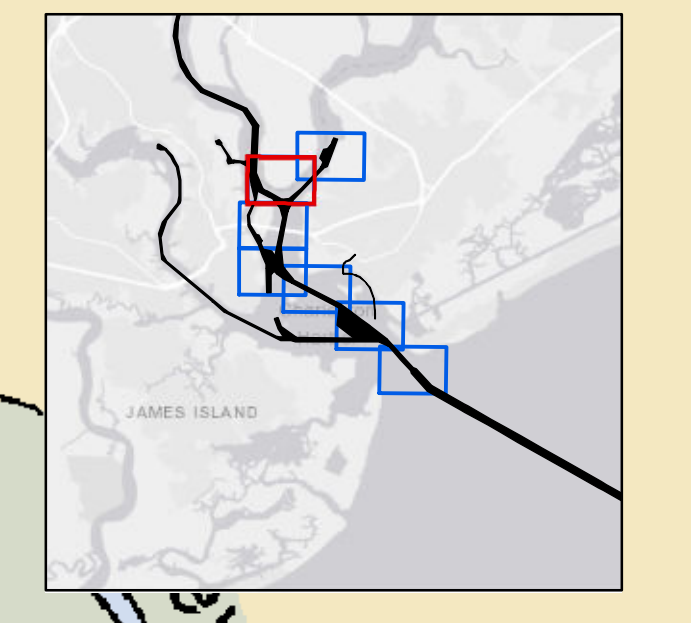
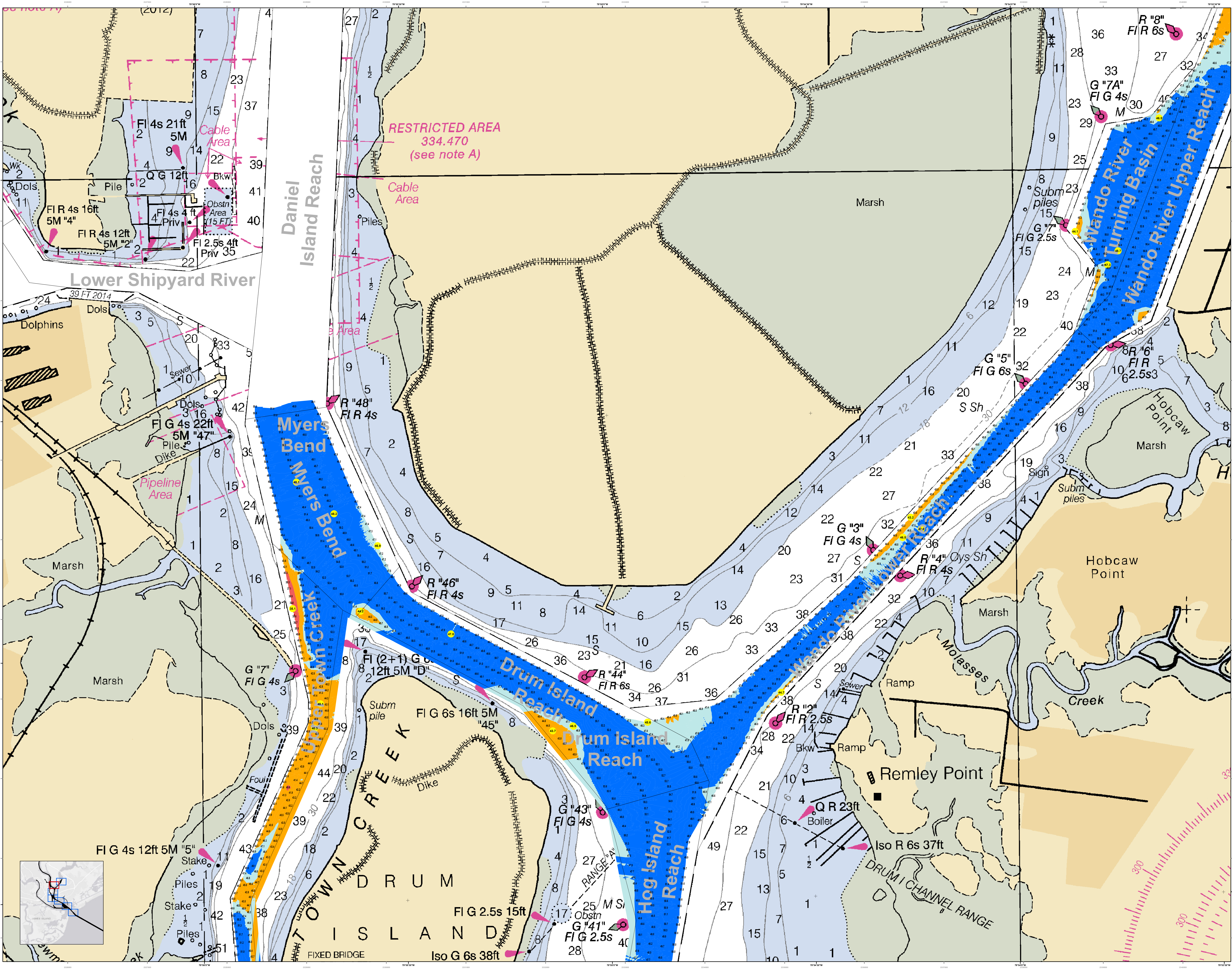


Legend

Symbol/Color	Description
Blue	Channel
Light Blue	Shoal
Yellow	Marsh
Green	Vegetation
Black	Structure
Red	Obstruction
Pink	Restriction
Orange	Other
Grey	Other
White	Other

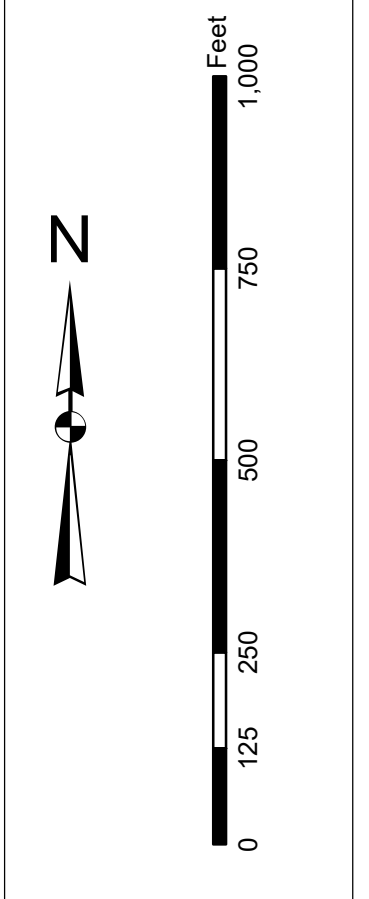
Designed By:	U.S. Army Corps of Engineers
Reviewed By:	U.S. Army Corps of Engineers
Checked By:	U.S. Army Corps of Engineers
Approved By:	U.S. Army Corps of Engineers
Scale:	1 inch = 348 feet
Projection:	NAD 1983 StatePlane South Carolina FIPS 3200 Feet
Survey Date:	18 DEC 2018
Production Date:	19 DEC 2018
Project Reference Number:	150101
Sheet Title:	CONDITION

Charleston Lower Harbor Channel
The information depicted on this map represents the results of surveys made on the dates indicated and can only be used for the purposes stated in the general conditions existing at that time.
Concluded on: 18 DEC 2018
Charleston, South Carolina



In the event that the U.S. Army Corps of Engineers, Charleston District Office, Special Data Branch is unable to locate, identify, or verify the information on this map, the user is advised that the information is provided as is and that the user is responsible for verifying the information. The user is advised that the information is provided as is and that the user is responsible for verifying the information. The user is advised that the information is provided as is and that the user is responsible for verifying the information.

Production Notes:
1. This map is for informational purposes only.
2. This map is not a substitute for a field survey.
3. Accuracy is not guaranteed.
4. All data is subject to change without notice.
5. All data is subject to change without notice.



Legend

Soundings
 - Wet (Blue)
 - Dry (Green)
 - Mean High Water (MHW) (Yellow)
 - Mean Low Water (MLW) (Light Blue)
 - Mean Lower Low Water (MLLW) (Light Green)
 - Mean Sea Level (MSL) (White)

Other Features
 - Submarine Piles (Black dots)
 - Obstructions (Red symbols)
 - Channel Centerline (Blue line)
 - Channel Edge (Blue dashed line)
 - Marsh (Green area)
 - Long Point (Tan area)
 - Hobcaw Point (Tan area)
 - Bermuda Creek Marsh (Green area)
 - Molasses Creek (Blue area)

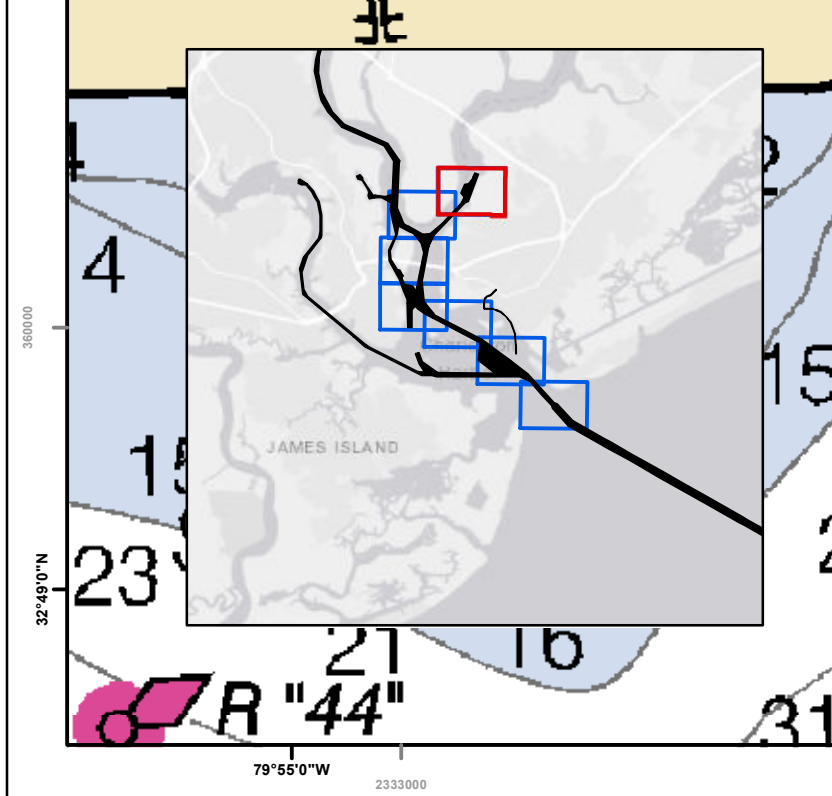
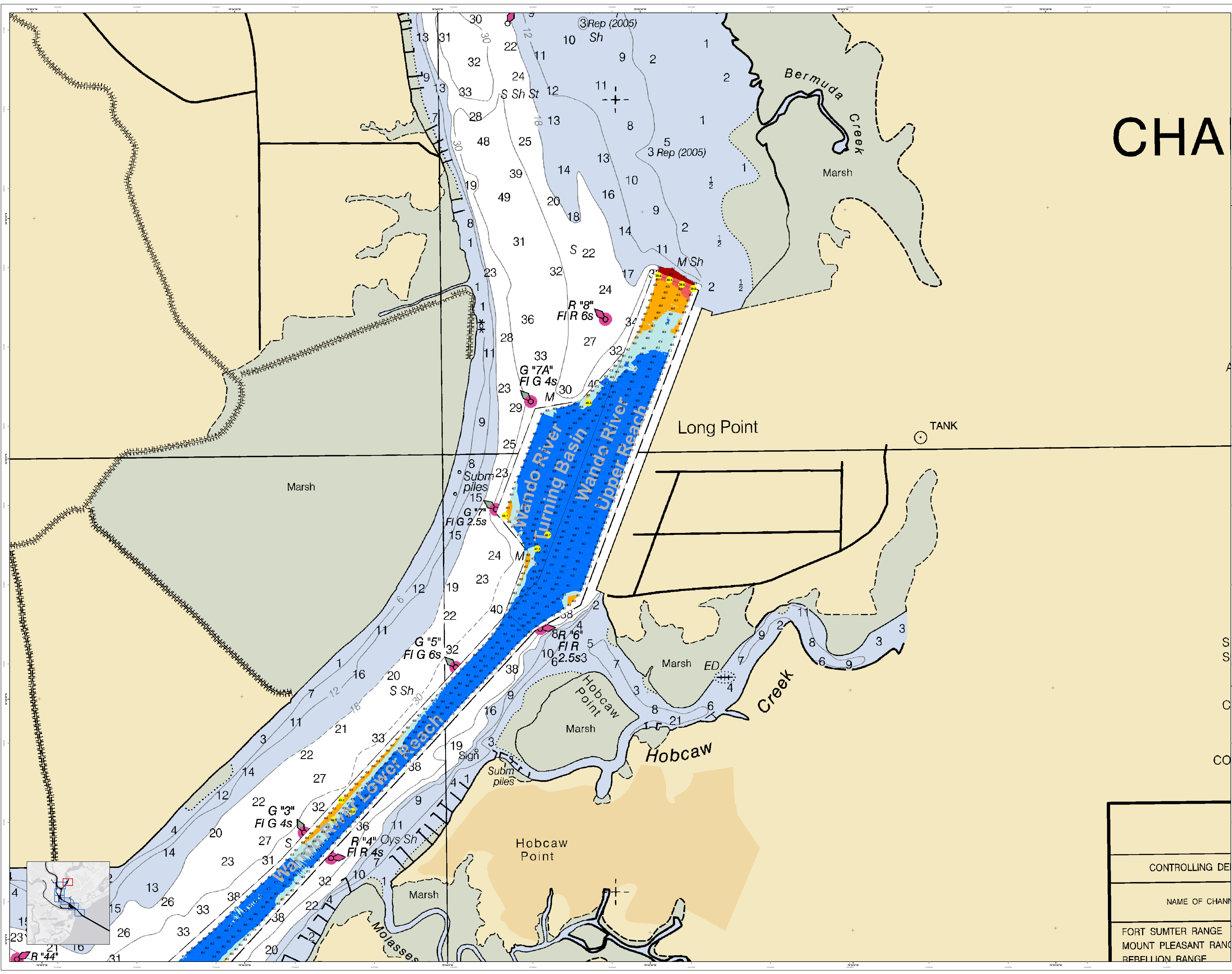
Designed By: U.S. Army Corps of Engineers Charleston District Office Special Data Branch Bryan Hancock Charleston, SC 29405 CESAC-GIS@USACE.ARMY.MIL	Reviewed By: U.S. Army Corps of Engineers Charleston District Office Special Data Branch Bryan Hancock Charleston, SC 29405 CESAC-GIS@USACE.ARMY.MIL	Survey Date: 18 DEC 2018	Production Date: 19 DEC 2018
Software: AutoCAD ArcGIS MicroStation	Scale: Horizontal Scale: 1" = 125' Vertical Scale: 1" = 348'	Project Reference Number: 18C00010	Sheet Title: CONDITION
Projection: NAD 1983 StatePlane South Carolina FIPS 3200 Feet		Sheet Number: 7 of 7	

Charleston Lower Harbor Channel
The information depicted on this map represents the results of surveys made on the dates indicated and conditions existing at that time.
Concluded on: 18 DEC 2018
Charleston, South Carolina

SHEET REFERENCE NUMBER
C002

SHEET 7 OF 7

CHA



CONTROLLING DEPARTMENT
NAME OF CHANNEL
FORT SUMNER RANGE
MOUNT PLEASANT RANGE
REBELLION RANGE