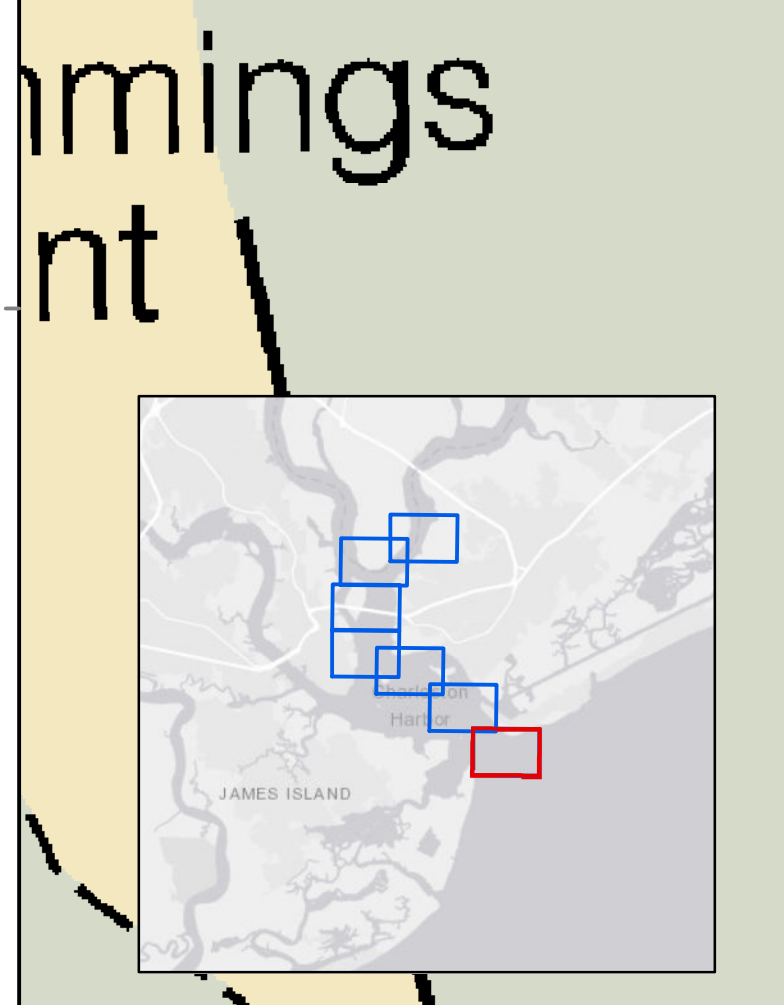


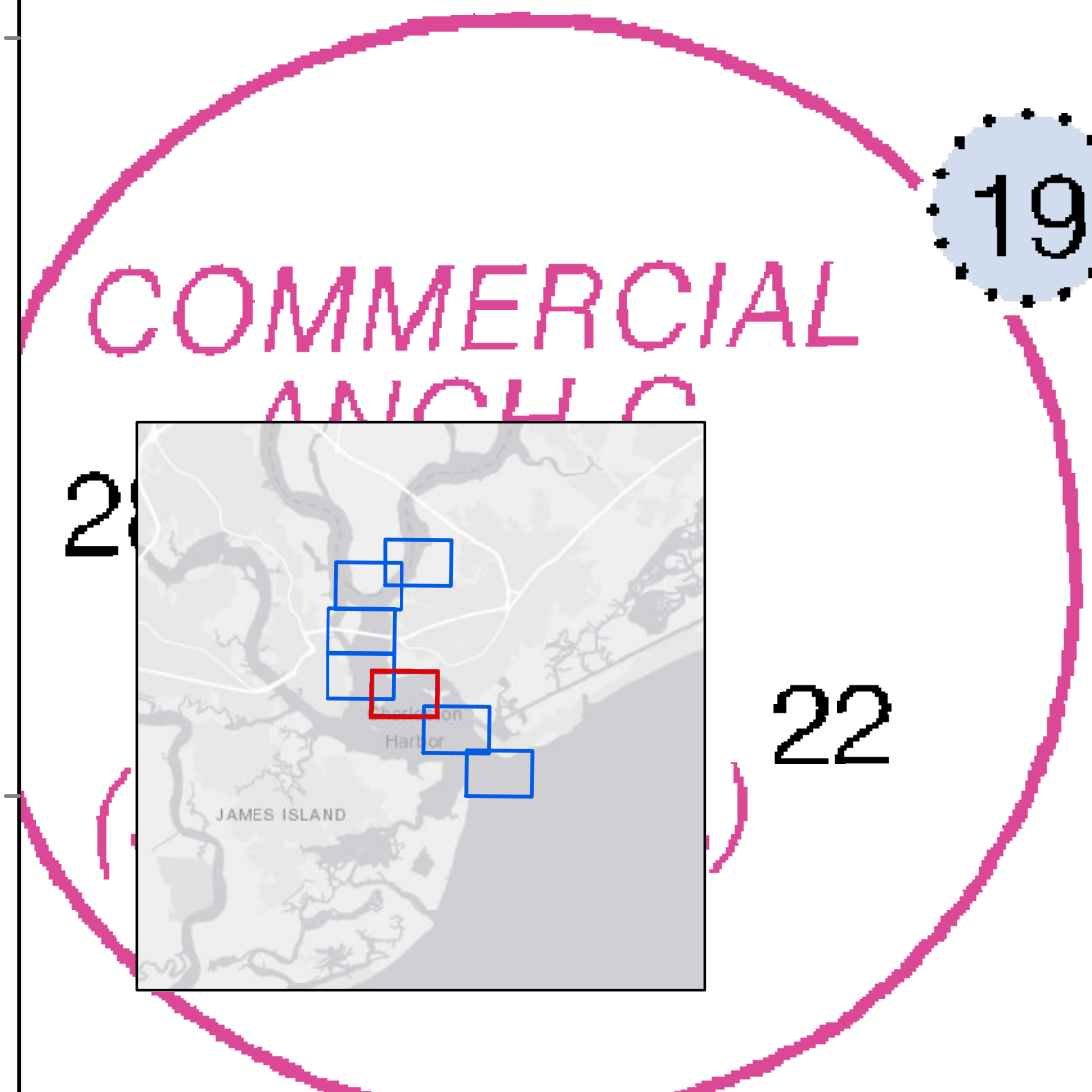
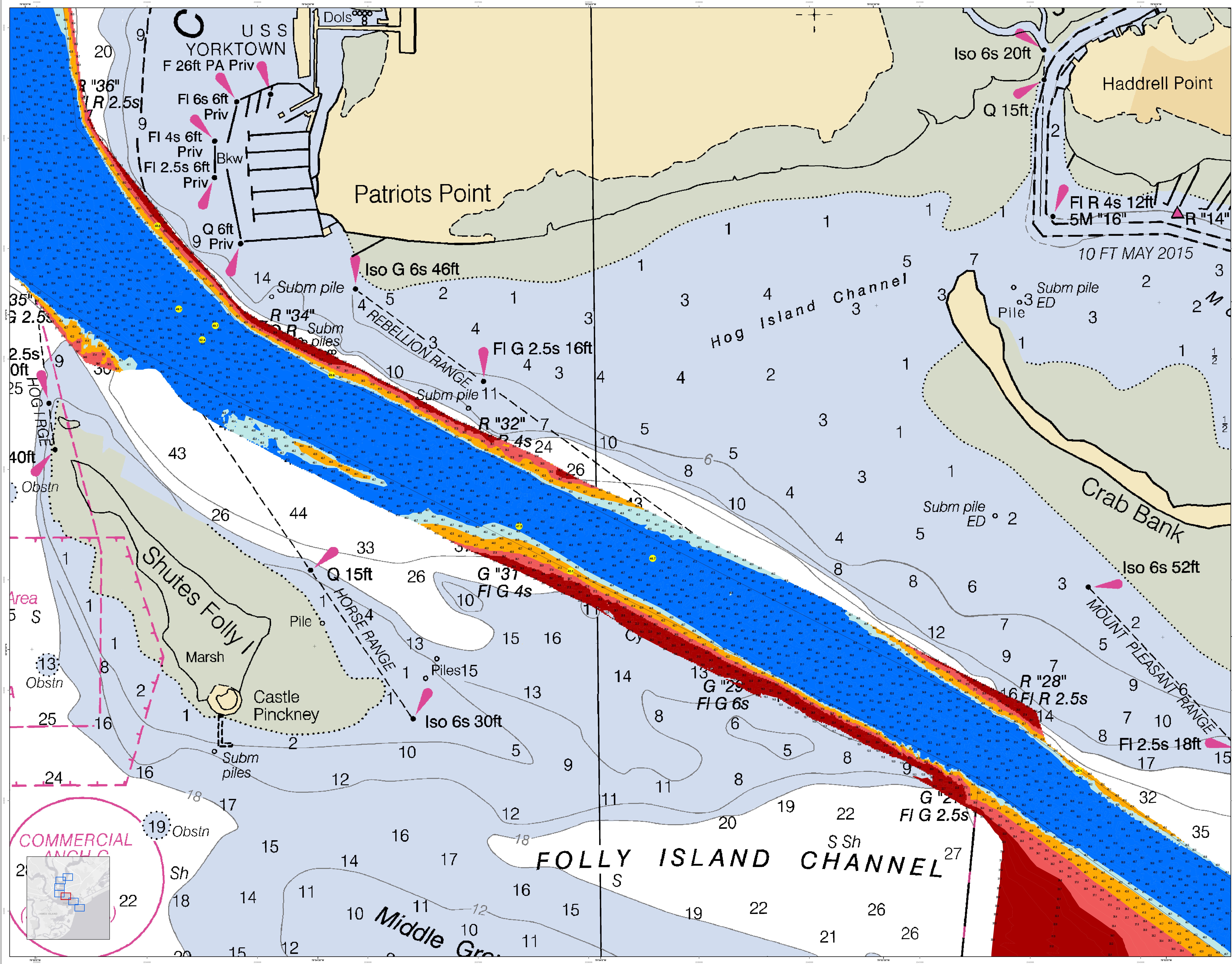
Pipeline Area
G "25"
FI G 4s



Wilmington

COLLEGS DEMARCATION LINE
80.710A (see note A)
Subm Jetty

FORT SUMTER RAN
(see tabulation)



U.S. Army Corps of Engineers
Charleston District

Production Notes:
1. This is a preliminary chart. It is not to be used for navigation.
2. There are no soundings in the area shown on this chart.
3. Soundings are in feet unless otherwise indicated.
4. All depths are subject to change.
5. The chart is not to be used for navigation.
6. The chart is not to be used for navigation.

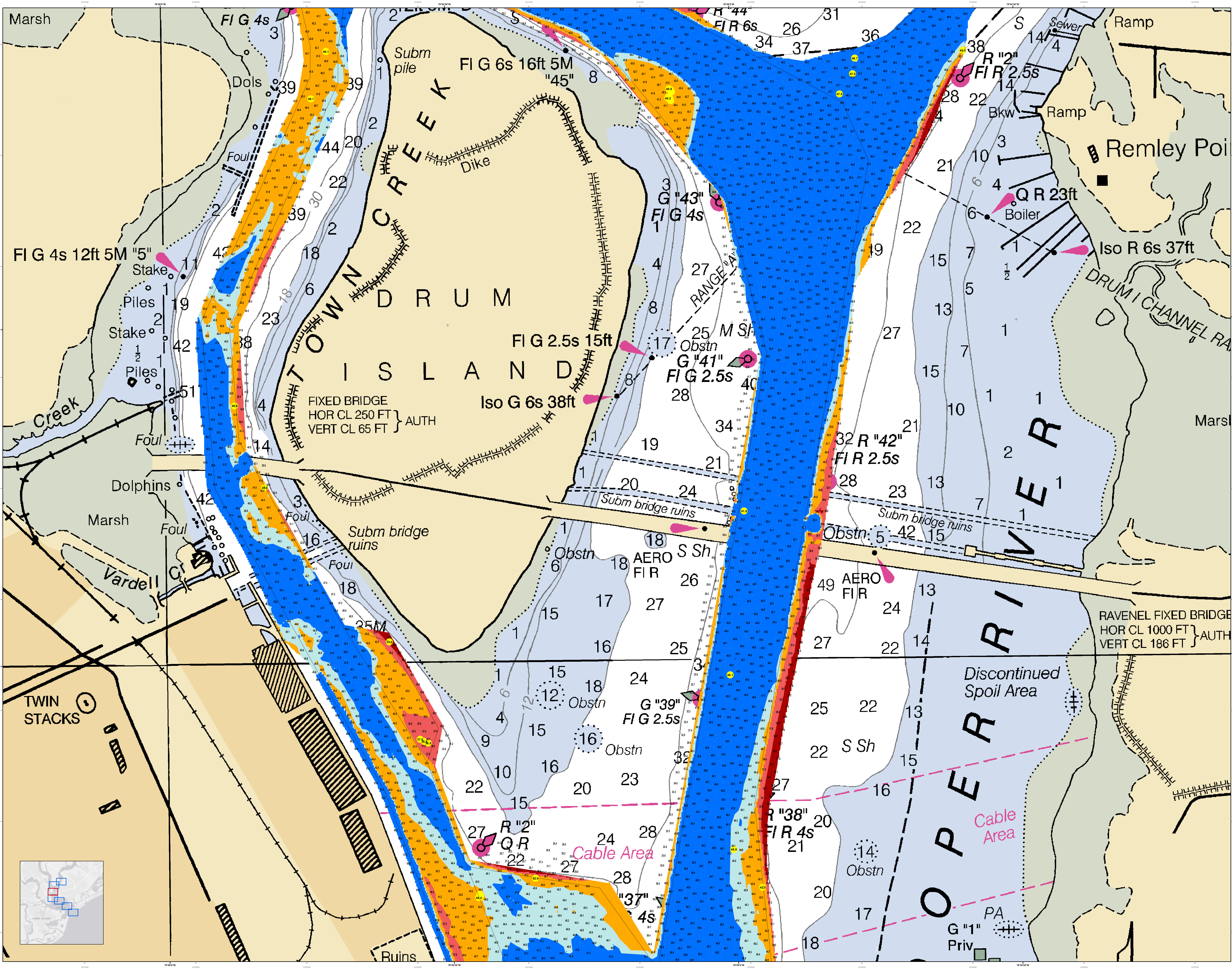
Legend:
Soundings: 10 FT MAY 2015, Iso 6s 52ft, etc.
Obstructions: Obstn, Subm pile, etc.
Contours: 10 FT MAY 2015, Iso 6s 52ft, etc.
Other: Shutes Folly I, Crab Bank, etc.

Scale: 0 125 250 500 750 1000 Feet

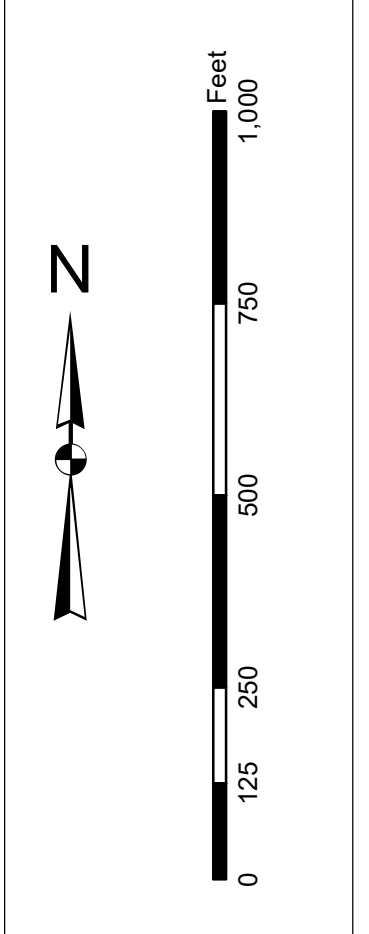
Designed By:	U.S. Army Corps of Engineers
Reviewed By:	U.S. Army Corps of Engineers
Approved By:	U.S. Army Corps of Engineers
Project Reference Number:	13300
Survey Year:	2020
Chart Number:	13300
Scale:	1 inch = 250 feet
Projection:	NAD 1983 StatePlane South Carolina FIPS 3900 Feet

Charleston Lower Harbor Channel
The information depicted on this map represents the results of surveys made on the dates indicated and call on other sources for more detailed information. Conditions existing at that time.
Concluded on: 28 MAY 2020
Charleston, South Carolina

SHEET REFERENCE NUMBER: C002
SHEET 3 OF 7



Production Notes:
 1. This is a hydrographic chart for navigational purposes only. It is not to be used for any other purpose.
 2. The information on this chart is based on the most recent available data.
 3. The information on this chart is not to be used for any purpose other than navigation.
 4. The information on this chart is not to be used for any purpose other than navigation.
 5. The information on this chart is not to be used for any purpose other than navigation.

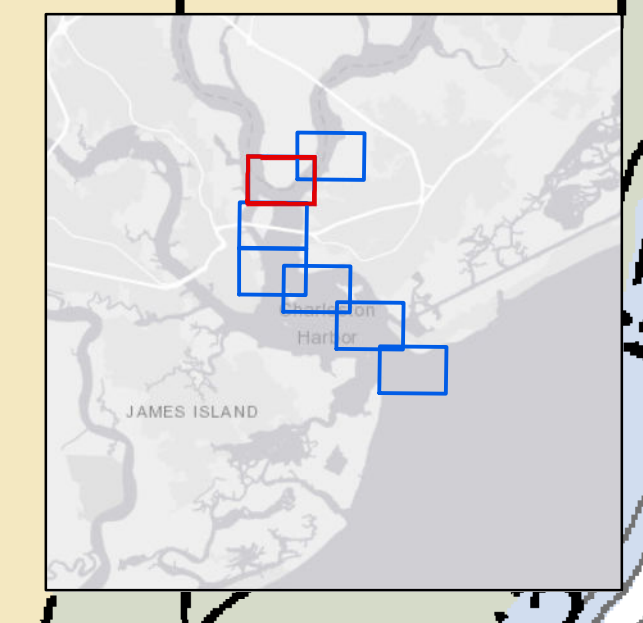
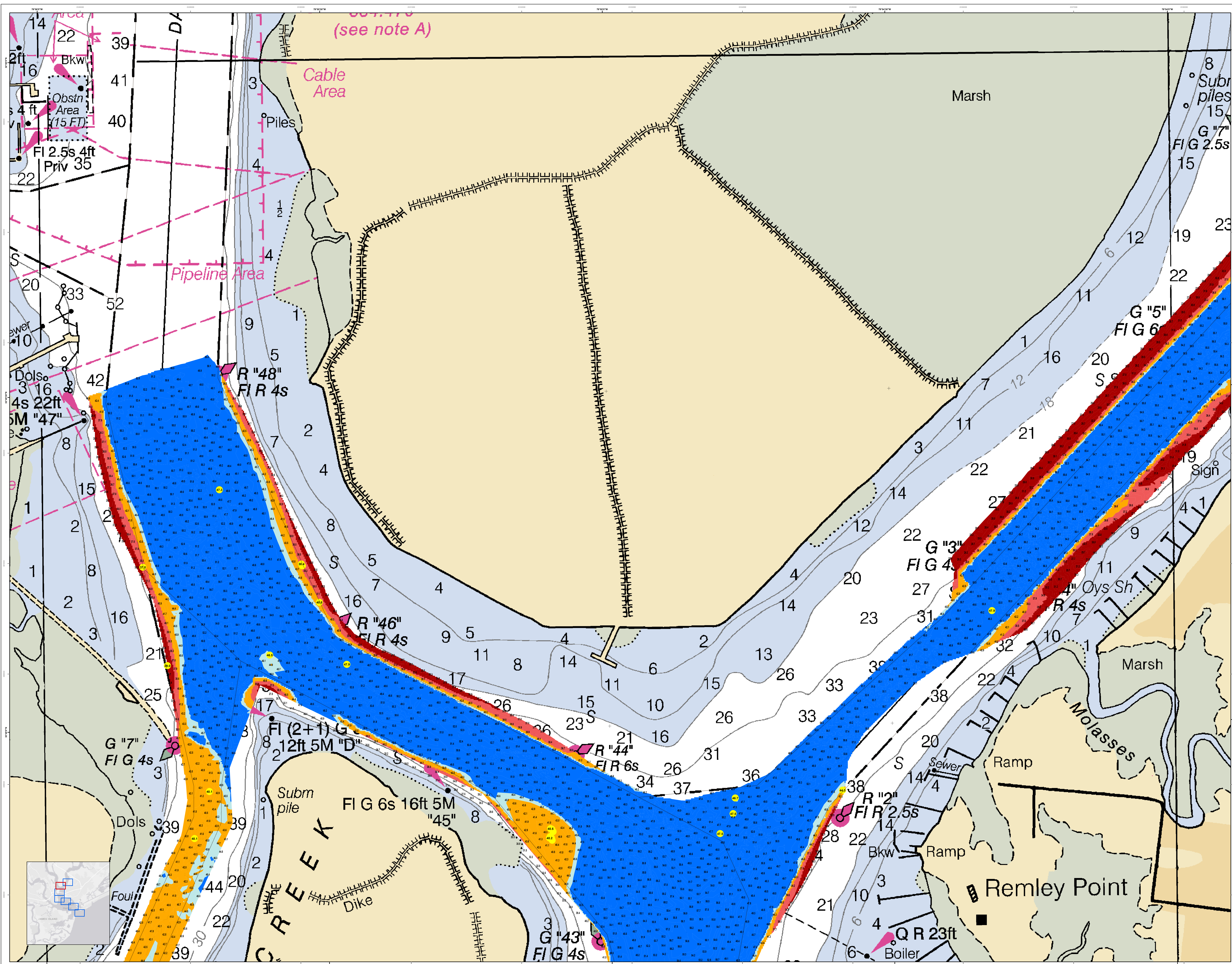


Legend

Symbol	Description
(Color swatches)	Depth Soundings
(Color swatches)	Obstructions
(Color swatches)	Navigation Aids
(Color swatches)	Structures
(Color swatches)	Other

Designed By:	U.S. Army Corps of Engineers
Reviewed By:	U.S. Army Corps of Engineers
Scale:	1 inch = 250 feet
Projection:	NAD 1983 StatePlane South Carolina FIPS 3900 Feet
Production Date:	04 JUNE 2020
Project Reference Number:	PC00210
Survey Year:	2019
Condition:	CONDITION

Charleston Lower Harbor Channel
 The information depicted on this map represents the results of surveys made on the dates indicated and call on other sources of information for general conditions existing at that time.
 Concluded on: 28 MAY 2020
 Charleston, South Carolina



U.S. Army Corps of Engineers
Charleston District

Production Notes:
1. This chart is a hydrographic chart and is not a nautical chart. It is not intended for use in navigation.
2. The information on this chart is based on the most recent available data.
3. Soundings are in feet unless otherwise indicated.
4. All depths are subject to change.
5. The chart is not to be used for navigation.
6. The chart is not to be used for navigation.

Legend:
 Depth Soundings: 1-44
 Navigational Aids: R "48", R "46", R "44", R "2", G "7", G "5", G "3", G "43"
 Infrastructure: Dike, Pipeline Area, Cable Area, Ramp, Boiler, Sewer, Subm pile
 Other: Marsh, Molasses, Remley Point

Scale: 1 inch = 250 feet

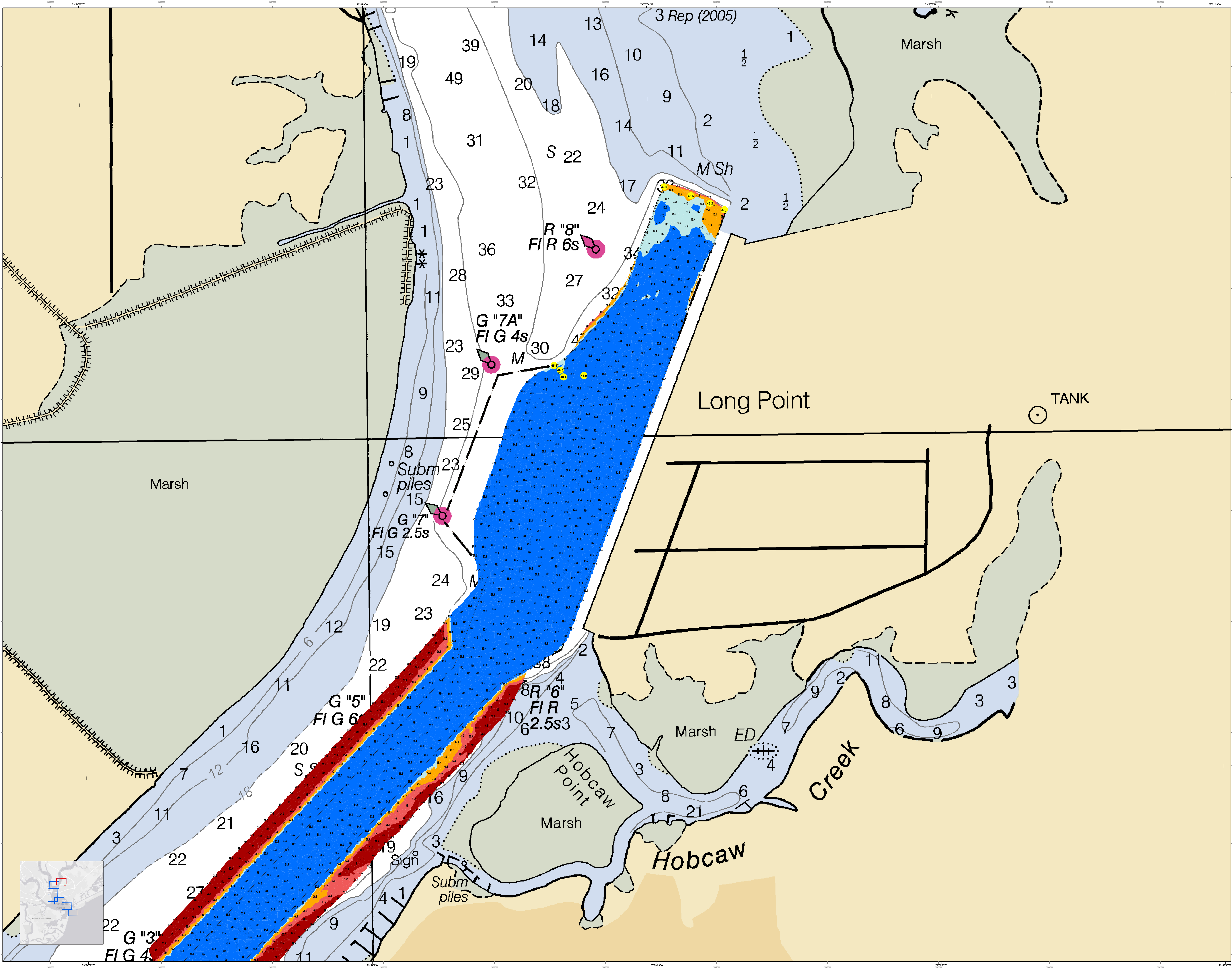
Projection: NAD 1983 StatePlane South Carolina FIPS 3900 Feet

Designed By: U.S. Army Corps of Engineers, Charleston District, Savannah River Branch, BIA/MAGDOVAE, CHARLESTON, SC 29403
Reviewed By: U.S. Army Corps of Engineers, Charleston District, Savannah River Branch, BIA/MAGDOVAE, CHARLESTON, SC 29403
Scale: 1:50,000
Projection: NAD 1983 StatePlane South Carolina FIPS 3900 Feet

Production Date: 28 MAY 2020
Survey Date: 04 JUNE 2020
Project Reference Number: 7
Chart Number: C002

Charleston Lower Harbor Channel
 The information depicted on this map represents the results of surveys made on the dates indicated and call on conditions existing at that time.
 Concluded on: 28 MAY 2020
 Charleston, South Carolina

SHEET REFERENCE NUMBER: C002
SHEET 6 OF 7



U.S. Army Corps of Engineers
Charleston District

Production Notes:
1. This chart is a hydrographic chart and is not a nautical chart. It is not intended to be used for navigation purposes.
2. This chart is based on the most recent available data. It is not intended to be used for navigation purposes.
3. This chart is based on the most recent available data. It is not intended to be used for navigation purposes.
4. This chart is based on the most recent available data. It is not intended to be used for navigation purposes.
5. This chart is based on the most recent available data. It is not intended to be used for navigation purposes.
6. This chart is based on the most recent available data. It is not intended to be used for navigation purposes.
7. This chart is based on the most recent available data. It is not intended to be used for navigation purposes.
8. This chart is based on the most recent available data. It is not intended to be used for navigation purposes.
9. This chart is based on the most recent available data. It is not intended to be used for navigation purposes.
10. This chart is based on the most recent available data. It is not intended to be used for navigation purposes.

Legend:
 - Soundings: 1-39
 - Depth: 1, 2, 3, 4, 5, 6, 7, 8, 9, 10, 11, 12, 13, 14, 15, 16, 17, 18, 19, 20, 21, 22, 23, 24, 25, 26, 27, 28, 29, 30, 31, 32, 33, 34, 35, 36, 37, 38, 39
 - Navigation Aids: R "8" FIR 6s, G "7A" FIG 4s, G "7" FIG 2.5s, G "5" FIG 6, 8R "6" FIR 2.5s3
 - Land Features: Marsh, Long Point, Hobcaw Point, Hobcaw Creek, TANK
 - Symbols: Subm piles, Sign

Scale: 1 inch = 250 feet
 0 125 250 375 500 625 750 875 1000 feet

Production Date: 04 JUNE 2020
Survey Date: 28 MAY 2020
Project Reference Number: 20C0010
Revision: 1
Scale: 1 inch = 250 feet
Projection: NAD 1983 StatePlane South Carolina FIPS 3900 Feet

Designed By: J. H. [Name]
Reviewed By: J. H. [Name]
Checked By: J. H. [Name]
Approved By: J. H. [Name]

U.S. Army Corps of Engineers
 CHARLESTON DISTRICT
 CHARLESTON, SOUTH CAROLINA
 3601 RIVERSIDE BLVD
 CHARLESTON, SC 29405
 CESAC-GIS@USACE.ARMY.MIL

Charleston Lower Harbor Channel
 The information depicted on this map represents the results of surveys made on the dates indicated and is not intended to be used for navigation purposes. Conditions existing at that time.
 Concluded on: 28 MAY 2020
 Charleston, South Carolina

SHEET REFERENCE NUMBER: C002
SHEET 7 OF 7