

U.S. Army Corps of Engineers  
Charleston District

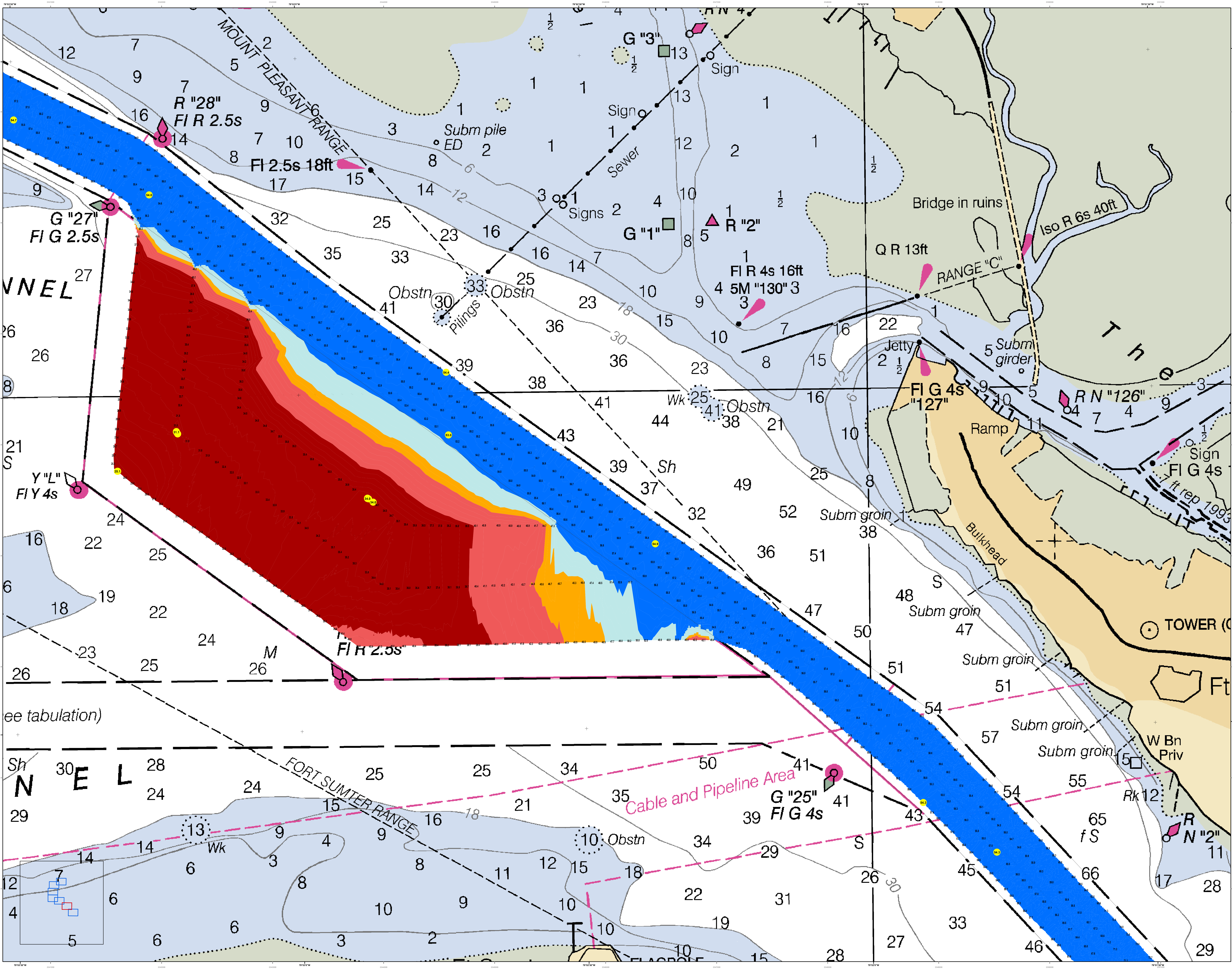
**Production Notes:**  
 1. This is a hydrographic chart.  
 2. It is not a navigational chart.  
 3. It is not a general purpose chart.  
 4. It is not a general purpose chart.  
 5. It is not a general purpose chart.  
 6. It is not a general purpose chart.  
 7. It is not a general purpose chart.  
 8. It is not a general purpose chart.  
 9. It is not a general purpose chart.  
 10. It is not a general purpose chart.

**Legend:**  
 Depth Soundings: 10, 15, 20, 25, 30, 35, 40, 45, 50, 55, 60, 65, 70, 75, 80, 85, 90, 95, 100, 110, 120, 130, 140, 150, 160, 170, 180, 190, 200, 210, 220, 230, 240, 250, 260, 270, 280, 290, 300, 310, 320, 330, 340, 350, 360, 370, 380, 390, 400, 410, 420, 430, 440, 450, 460, 470, 480, 490, 500, 510, 520, 530, 540, 550, 560, 570, 580, 590, 600, 610, 620, 630, 640, 650, 660, 670, 680, 690, 700, 710, 720, 730, 740, 750, 760, 770, 780, 790, 800, 810, 820, 830, 840, 850, 860, 870, 880, 890, 900, 910, 920, 930, 940, 950, 960, 970, 980, 990, 1000.  
 Contours: 1, 2, 3, 4, 5, 6, 7, 8, 9, 10, 11, 12, 13, 14, 15, 16, 17, 18, 19, 20, 21, 22, 23, 24, 25, 26, 27, 28, 29, 30, 31, 32, 33, 34, 35, 36, 37, 38, 39, 40, 41, 42, 43, 44, 45, 46, 47, 48, 49, 50, 51, 52, 53, 54, 55, 56, 57, 58, 59, 60, 61, 62, 63, 64, 65, 66, 67, 68, 69, 70, 71, 72, 73, 74, 75, 76, 77, 78, 79, 80, 81, 82, 83, 84, 85, 86, 87, 88, 89, 90, 91, 92, 93, 94, 95, 96, 97, 98, 99, 100.  
 Obstructions: 1, 2, 3, 4, 5, 6, 7, 8, 9, 10, 11, 12, 13, 14, 15, 16, 17, 18, 19, 20, 21, 22, 23, 24, 25, 26, 27, 28, 29, 30, 31, 32, 33, 34, 35, 36, 37, 38, 39, 40, 41, 42, 43, 44, 45, 46, 47, 48, 49, 50, 51, 52, 53, 54, 55, 56, 57, 58, 59, 60, 61, 62, 63, 64, 65, 66, 67, 68, 69, 70, 71, 72, 73, 74, 75, 76, 77, 78, 79, 80, 81, 82, 83, 84, 85, 86, 87, 88, 89, 90, 91, 92, 93, 94, 95, 96, 97, 98, 99, 100.  
 Lights: 1, 2, 3, 4, 5, 6, 7, 8, 9, 10, 11, 12, 13, 14, 15, 16, 17, 18, 19, 20, 21, 22, 23, 24, 25, 26, 27, 28, 29, 30, 31, 32, 33, 34, 35, 36, 37, 38, 39, 40, 41, 42, 43, 44, 45, 46, 47, 48, 49, 50, 51, 52, 53, 54, 55, 56, 57, 58, 59, 60, 61, 62, 63, 64, 65, 66, 67, 68, 69, 70, 71, 72, 73, 74, 75, 76, 77, 78, 79, 80, 81, 82, 83, 84, 85, 86, 87, 88, 89, 90, 91, 92, 93, 94, 95, 96, 97, 98, 99, 100.  
 Markers: 1, 2, 3, 4, 5, 6, 7, 8, 9, 10, 11, 12, 13, 14, 15, 16, 17, 18, 19, 20, 21, 22, 23, 24, 25, 26, 27, 28, 29, 30, 31, 32, 33, 34, 35, 36, 37, 38, 39, 40, 41, 42, 43, 44, 45, 46, 47, 48, 49, 50, 51, 52, 53, 54, 55, 56, 57, 58, 59, 60, 61, 62, 63, 64, 65, 66, 67, 68, 69, 70, 71, 72, 73, 74, 75, 76, 77, 78, 79, 80, 81, 82, 83, 84, 85, 86, 87, 88, 89, 90, 91, 92, 93, 94, 95, 96, 97, 98, 99, 100.

Designed By:	U.S. Army Corps of Engineers	Production Date:	15 NOV 2022
Reviewed By:	U.S. Army Corps of Engineers	Project Reference Number:	21 NOV 2022
Scale:	1:15,000	Survey System:	CONDITON SURVEY
Projection:	NAD 1983 StatePlane South Carolina FIPS 3900 Feet	Chart Number:	11000

**Charleston Lower Harbor Channel**  
 The information depicted on this map represents the results of surveys made on the dates indicated and call on other charts for general information and conditions existing at that time.  
 Concluded on: 15 NOV 2022  
 Charleston, South Carolina

SHEET REFERENCE NUMBER: C002  
 SHEET 1 OF 7



U.S. Army Corps of Engineers  
Charleston District

**Production Notes:**  
This is a preliminary chart. It is not to be used for navigation. It is not to be used for the purpose of determining the location of any object. It is not to be used for the purpose of determining the location of any object. It is not to be used for the purpose of determining the location of any object.

**Legend:**  
Soundings: 10-12, 13, 14, 15, 16, 17, 18, 19, 20, 21, 22, 23, 24, 25, 26, 27, 28, 29, 30, 31, 32, 33, 34, 35, 36, 37, 38, 39, 40, 41, 42, 43, 44, 45, 46, 47, 48, 49, 50, 51, 52, 53, 54, 55, 56, 57, 58, 59, 60, 61, 62, 63, 64, 65, 66, 67, 68, 69, 70, 71, 72, 73, 74, 75, 76, 77, 78, 79, 80, 81, 82, 83, 84, 85, 86, 87, 88, 89, 90, 91, 92, 93, 94, 95, 96, 97, 98, 99, 100  
Obstn: 10, 13, 30, 33, 38, 41, 44  
Pillings: 30, 33  
Wk: 25, 41  
Sh: 37, 39, 43, 49, 52, 57  
Subm groin: 38, 47, 47, 51, 51, 54, 57  
Bulkhead: S  
Ramp: 11  
Jetty: 2 1/2  
Subm girder: 5  
Sign: 1, 2, 3, 4, 5, 6, 7, 8, 9, 10, 11, 12, 13, 14, 15, 16, 17, 18, 19, 20, 21, 22, 23, 24, 25, 26, 27, 28, 29, 30, 31, 32, 33, 34, 35, 36, 37, 38, 39, 40, 41, 42, 43, 44, 45, 46, 47, 48, 49, 50, 51, 52, 53, 54, 55, 56, 57, 58, 59, 60, 61, 62, 63, 64, 65, 66, 67, 68, 69, 70, 71, 72, 73, 74, 75, 76, 77, 78, 79, 80, 81, 82, 83, 84, 85, 86, 87, 88, 89, 90, 91, 92, 93, 94, 95, 96, 97, 98, 99, 100  
TOWER (C)  
Ft  
W Bn Priv  
Rk 12  
R "2" 11

**Scale:**  
0 125 250 500 750 1000 Feet

**Production Date:**  
15 NOV 2022

**Project Reference Number:**  
P000010

**Survey Type:**  
CONDITION SURVEY

**Designed By:**  
Hydro Software v3.82

**Reviewed By:**  
Absolute Scale  
1:5000  
Graphic Scale  
1 inch = 250 Feet

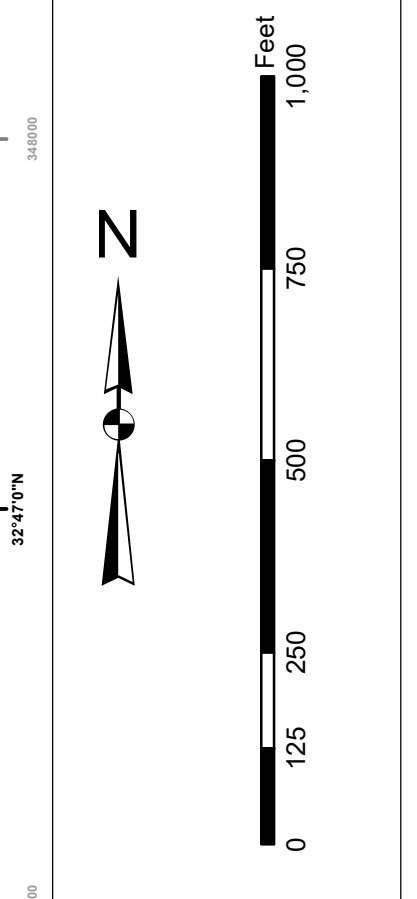
**Projection:**  
NAD 1983 StatePlane South Carolina FIPS 3900 Feet

**U.S. Army Corps of Engineers  
Charleston District  
Charleston, South Carolina**

**Charleston Harbor Channel**  
The information depicted on this map represents the results of surveys made on the dates indicated and call on the charts for the most current general conditions existing at that time.  
Concluded on: 15 NOV 2022  
Charleston, South Carolina

**SHEET REFERENCE NUMBER**  
C002  
SHEET 2 OF 7

In accordance with the U.S. Army Corps of Engineers, Charleston District Office, Special Data Branch has made this report, charts, and other information available to the public. This information is provided for informational purposes only and does not constitute a warranty of any kind. The information is provided as is and the user assumes all responsibility for its use. This information is not intended to be used for navigation. The information is provided for informational purposes only and does not constitute a warranty of any kind. The information is provided as is and the user assumes all responsibility for its use. This information is not intended to be used for navigation. The information is provided for informational purposes only and does not constitute a warranty of any kind. The information is provided as is and the user assumes all responsibility for its use. This information is not intended to be used for navigation.

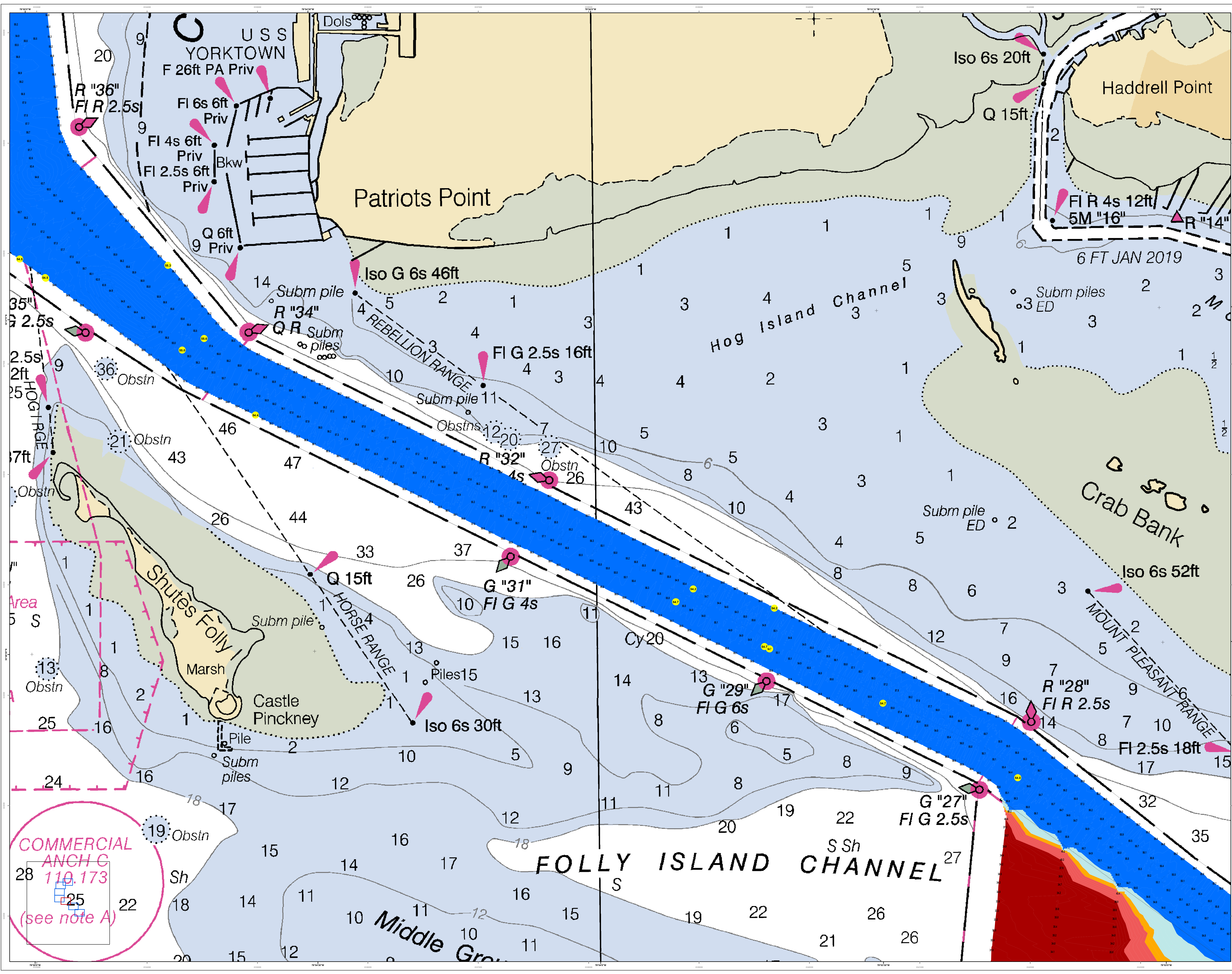


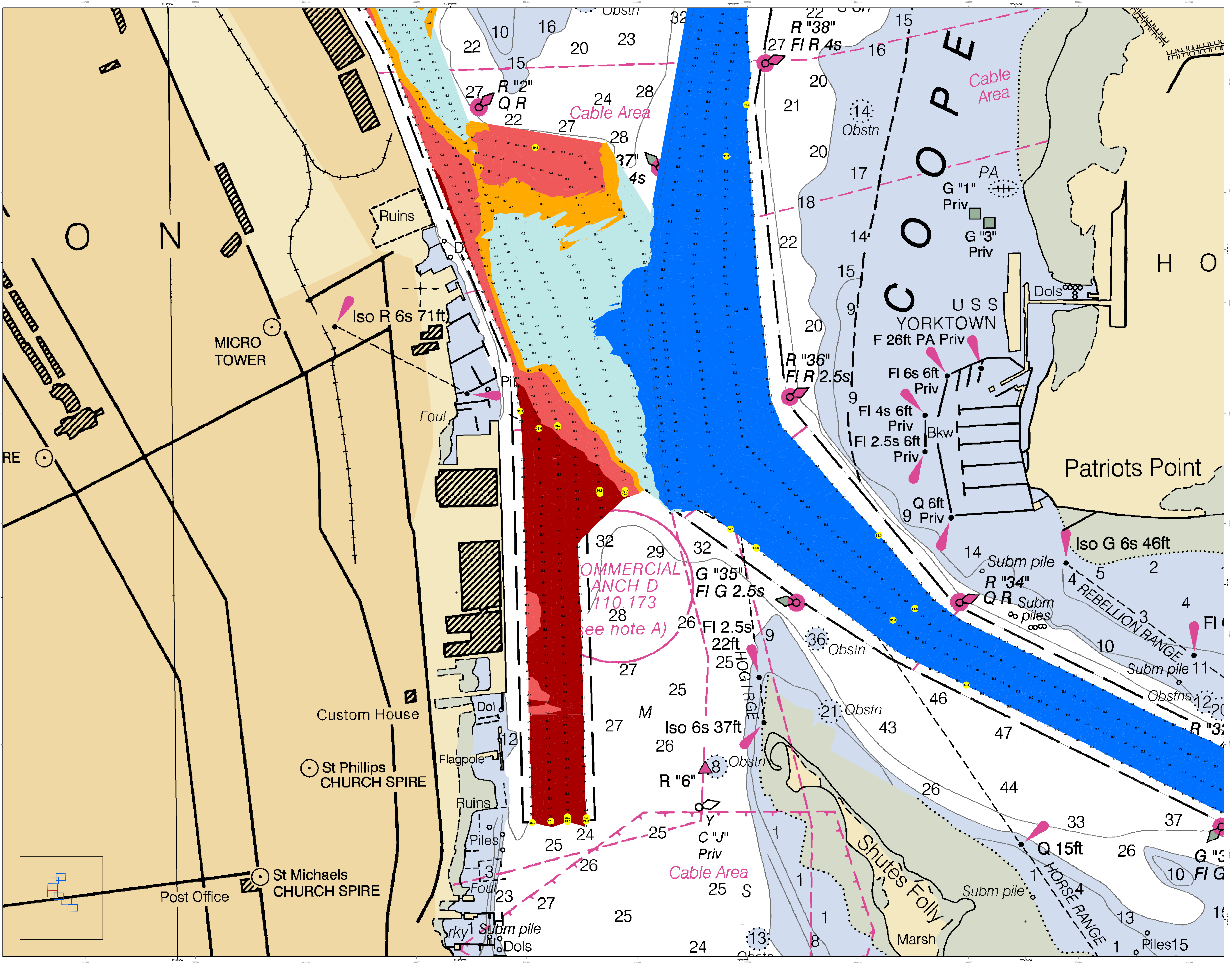
Legend

Water	Blue
Shoals	Light Blue
Submerged Rocks	Green
Obstructions	Red
Obstruction Lights	Yellow
Obstruction Sounds	White
Obstruction Colors	Black
Obstruction Shapes	Black
Obstruction Symbols	Black
Obstruction Notes	Black
Obstruction Dimensions	Black
Obstruction Dates	Black
Obstruction Status	Black
Obstruction Type	Black
Obstruction Material	Black
Obstruction Location	Black
Obstruction Orientation	Black
Obstruction Height	Black
Obstruction Depth	Black
Obstruction Length	Black
Obstruction Width	Black
Obstruction Area	Black
Obstruction Volume	Black
Obstruction Weight	Black
Obstruction Density	Black
Obstruction Temperature	Black
Obstruction Humidity	Black
Obstruction Pressure	Black
Obstruction Force	Black
Obstruction Torque	Black
Obstruction Power	Black
Obstruction Energy	Black
Obstruction Momentum	Black
Obstruction Impulse	Black
Obstruction Acceleration	Black
Obstruction Velocity	Black
Obstruction Acceleration	Black
Obstruction Deceleration	Black
Obstruction Frequency	Black
Obstruction Wavelength	Black
Obstruction Amplitude	Black
Obstruction Phase	Black
Obstruction Period	Black
Obstruction Duty Cycle	Black
Obstruction Modulation	Black
Obstruction Frequency Modulation	Black
Obstruction Amplitude Modulation	Black
Obstruction Phase Modulation	Black
Obstruction Frequency Modulation	Black
Obstruction Amplitude Modulation	Black
Obstruction Phase Modulation	Black
Obstruction Frequency Modulation	Black
Obstruction Amplitude Modulation	Black
Obstruction Phase Modulation	Black
Obstruction Frequency Modulation	Black
Obstruction Amplitude Modulation	Black
Obstruction Phase Modulation	Black

U.S. Army Corps of Engineers	Charleston District	Charleston, South Carolina
Special Data Branch	Charleston, South Carolina	Charleston, South Carolina
Survey Date: 15 NOV 2022	Production Date: 21 NOV 2022	
Project Reference Number: 15NOV2022	Project Reference Number: 15NOV2022	
Survey Type: CONDITION SURVEY	Survey Type: CONDITION SURVEY	
Scale: 1 inch = 250 feet	Scale: 1 inch = 250 feet	
Projection: NAD 1983 StatePlane South Carolina FIPS 3200 Feet	Projection: NAD 1983 StatePlane South Carolina FIPS 3200 Feet	

Charleston Lower Harbor Channel  
The information depicted on this map represents the results of surveys made on the dates indicated and is not intended to be used for navigation. The information is provided for informational purposes only and does not constitute a warranty of any kind. The information is provided as is and the user assumes all responsibility for its use. This information is not intended to be used for navigation. The information is provided for informational purposes only and does not constitute a warranty of any kind. The information is provided as is and the user assumes all responsibility for its use. This information is not intended to be used for navigation.





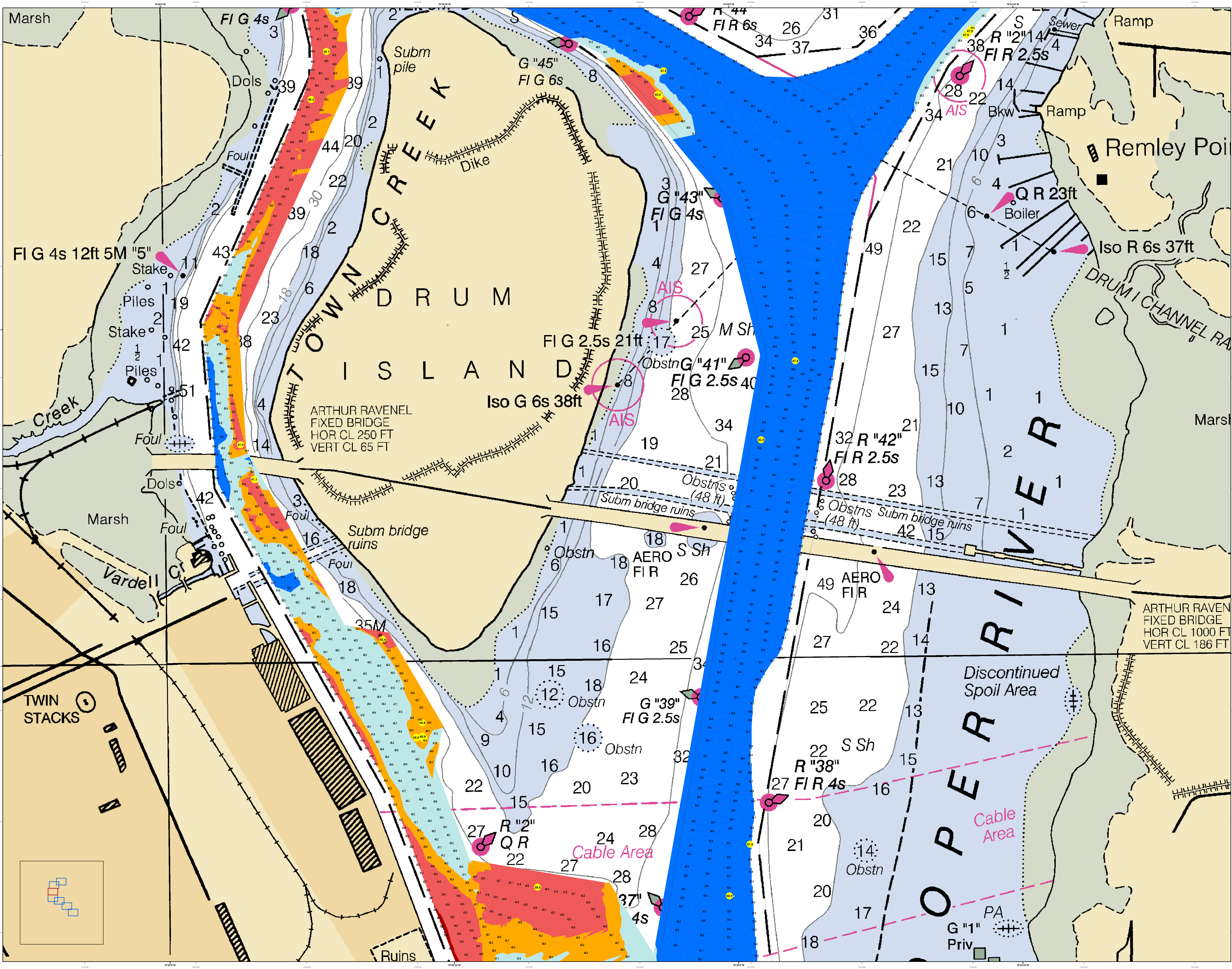
In this chart the U.S. Army Corps of Engineers, Charleston District Office, Special Data Branch has made the most recent available information available to the public. This information is based on the most recent available information. There are many factors which may affect the accuracy of the information shown on this chart. The user should exercise caution when using this information. For more information on the accuracy and reliability of the information shown on this chart, contact the Hydrographic Surveying Branch, U.S. Army Corps of Engineers, Charleston District Office, 1300 DuPont Circle, Charleston, SC 29403.

Production Note:  
1. This chart is produced by the Hydrographic Surveying Branch, U.S. Army Corps of Engineers, Charleston District Office, 1300 DuPont Circle, Charleston, SC 29403.  
2. All data were collected by the Hydrographic Surveying Branch, U.S. Army Corps of Engineers, Charleston District Office, 1300 DuPont Circle, Charleston, SC 29403.  
3. Changes are noted as follows:  
a. Changes in soundings are indicated by a vertical line and a number in a circle.  
b. Changes in navigational aids are indicated by a vertical line and a number in a circle.  
c. Changes in obstructions are indicated by a vertical line and a number in a circle.  
d. Changes in depths are indicated by a vertical line and a number in a circle.  
e. Changes in symbols are indicated by a vertical line and a number in a circle.

Legend:  
Sounding: 1' to 10', 10' to 20', 20' to 30', 30' to 40', 40' to 50', 50' to 60', 60' to 70', 70' to 80', 80' to 90', 90' to 100', 100' and deeper  
Obstruction: Obstruction, Obstruction, Obstruction  
Navigational Aid: Buoy, Light, Beacon, Daymark, Spar buoy  
Other: Other, Other, Other

Designed By:	U.S. Army Corps of Engineers Charleston District Office Hydrographic Surveying Branch BNA/ACD/DAE
Reviewed By:	U.S. Army Corps of Engineers Charleston District Office Hydrographic Surveying Branch BNA/ACD/DAE
Production Date:	15 NOV 2022
Project Reference Number:	13000
Survey Type:	CONDITION SURVEY
Projection:	NAD 1983 StatePlane South Carolina FIPS 3900 Feet

Charleston Lower Harbor Channel  
The information depicted on this map represents the results of surveys made on the dates indicated and is subject to change. The user should exercise caution when using this information. For more information on the accuracy and reliability of the information shown on this chart, contact the Hydrographic Surveying Branch, U.S. Army Corps of Engineers, Charleston District Office, 1300 DuPont Circle, Charleston, SC 29403.  
Concluded on: 15 NOV 2022  
Charleston, South Carolina



**Production Note:**  
 This chart was produced using the latest available data. It is not intended to be used for navigation without a current update.  
 1. This chart is produced to the best of our ability based on the information available to us.  
 2. We are not responsible for errors or omissions in this chart.  
 3. We are not responsible for damage to property or injury to persons resulting from the use of this chart.  
 4. We are not responsible for the use of this chart in connection with any other chart or publication.  
 5. We are not responsible for the use of this chart in connection with any other chart or publication.  
 6. We are not responsible for the use of this chart in connection with any other chart or publication.  
 7. We are not responsible for the use of this chart in connection with any other chart or publication.  
 8. We are not responsible for the use of this chart in connection with any other chart or publication.  
 9. We are not responsible for the use of this chart in connection with any other chart or publication.  
 10. We are not responsible for the use of this chart in connection with any other chart or publication.

**Legend:**

Depth Soundings

Obstruction

Light

Daymark

Structure

Channel

Reef

Spillway

Breakwater

Seaward

Upward

Downward

Variable

Light

Daymark

Structure

Channel

Reef

Spillway

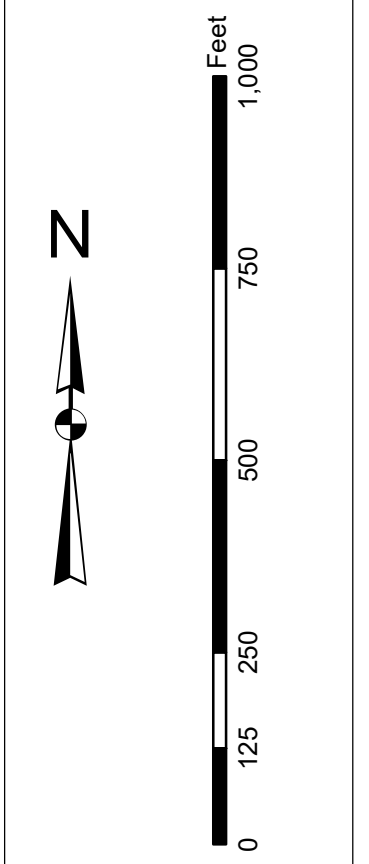
Breakwater

Seaward

Upward

Downward

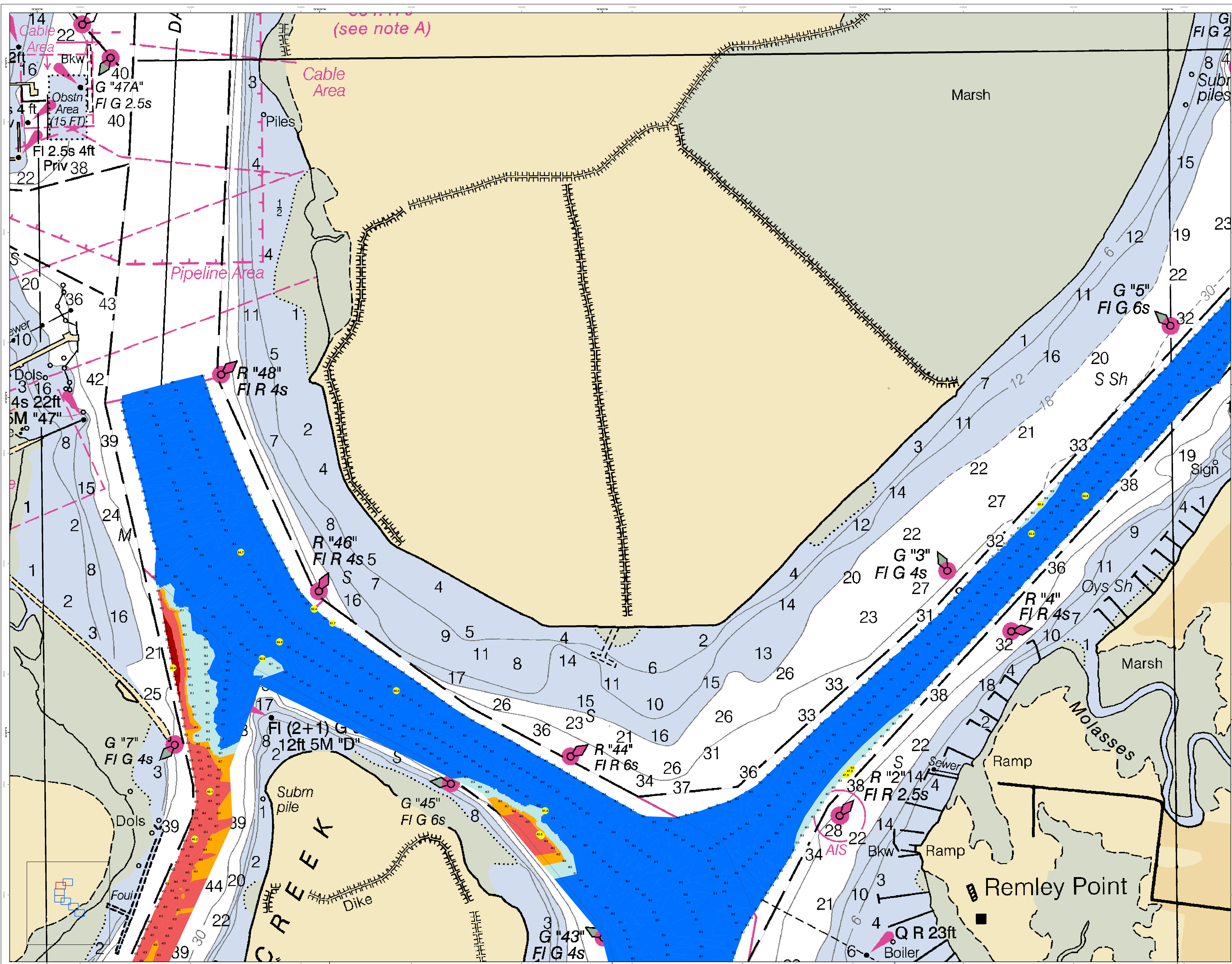
Variable



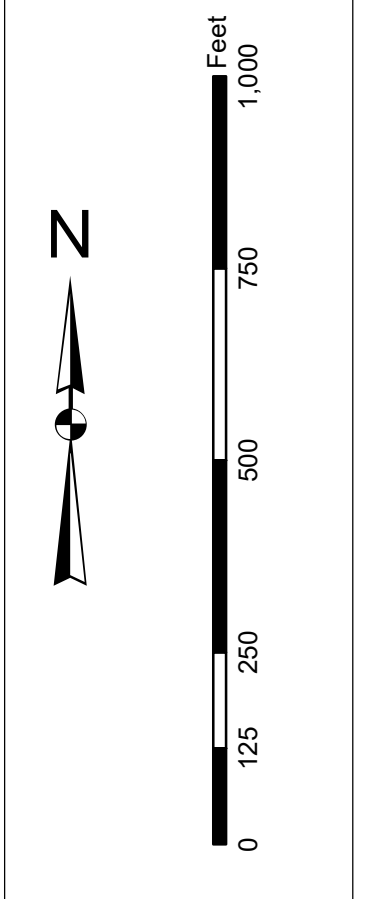
Symbol	Description
[Red circle]	AIS Buoy
[Green circle]	Light
[Yellow circle]	Daymark
[Blue circle]	Structure
[Pink circle]	Channel
[Green circle]	Reef
[Blue circle]	Spillway
[Black circle]	Breakwater
[Pink circle]	Seaward
[Black circle]	Upward
[Black circle]	Downward
[Pink circle]	Variable

Designed By:	Hydro Software v3.82	Production Date:	15 NOV 2022
Reviewed By:	Relative Scale	Project Reference Number:	C002
Revised:	1:50,000	Survey Year:	2020/21
Scale:	1 inch = 250 Feet	Survey Title:	CONDITION SURVEY
Projection:	NAD 1983 StatePlane South Carolina FIPS 3900 Feet		

**Charleston Lower Harbor Channel**  
 The information depicted on this map represents the results of surveys made on the dates indicated and can only be used under the general conditions existing at that time.  
 Concluded on: 15 NOV 2022  
 Charleston, South Carolina



**Production Notes:**  
 1. This is a hydrographic chart produced by the U.S. Army Corps of Engineers, Charleston District Office. Special data shown on this chart are the result of a survey conducted by the Charleston District Office. The data were collected by the Charleston District Office and are not to be used for any other purpose.  
 2. The data were collected by the Charleston District Office and are not to be used for any other purpose.  
 3. The data were collected by the Charleston District Office and are not to be used for any other purpose.  
 4. The data were collected by the Charleston District Office and are not to be used for any other purpose.  
 5. The data were collected by the Charleston District Office and are not to be used for any other purpose.  
 6. The data were collected by the Charleston District Office and are not to be used for any other purpose.  
 7. The data were collected by the Charleston District Office and are not to be used for any other purpose.  
 8. The data were collected by the Charleston District Office and are not to be used for any other purpose.  
 9. The data were collected by the Charleston District Office and are not to be used for any other purpose.  
 10. The data were collected by the Charleston District Office and are not to be used for any other purpose.

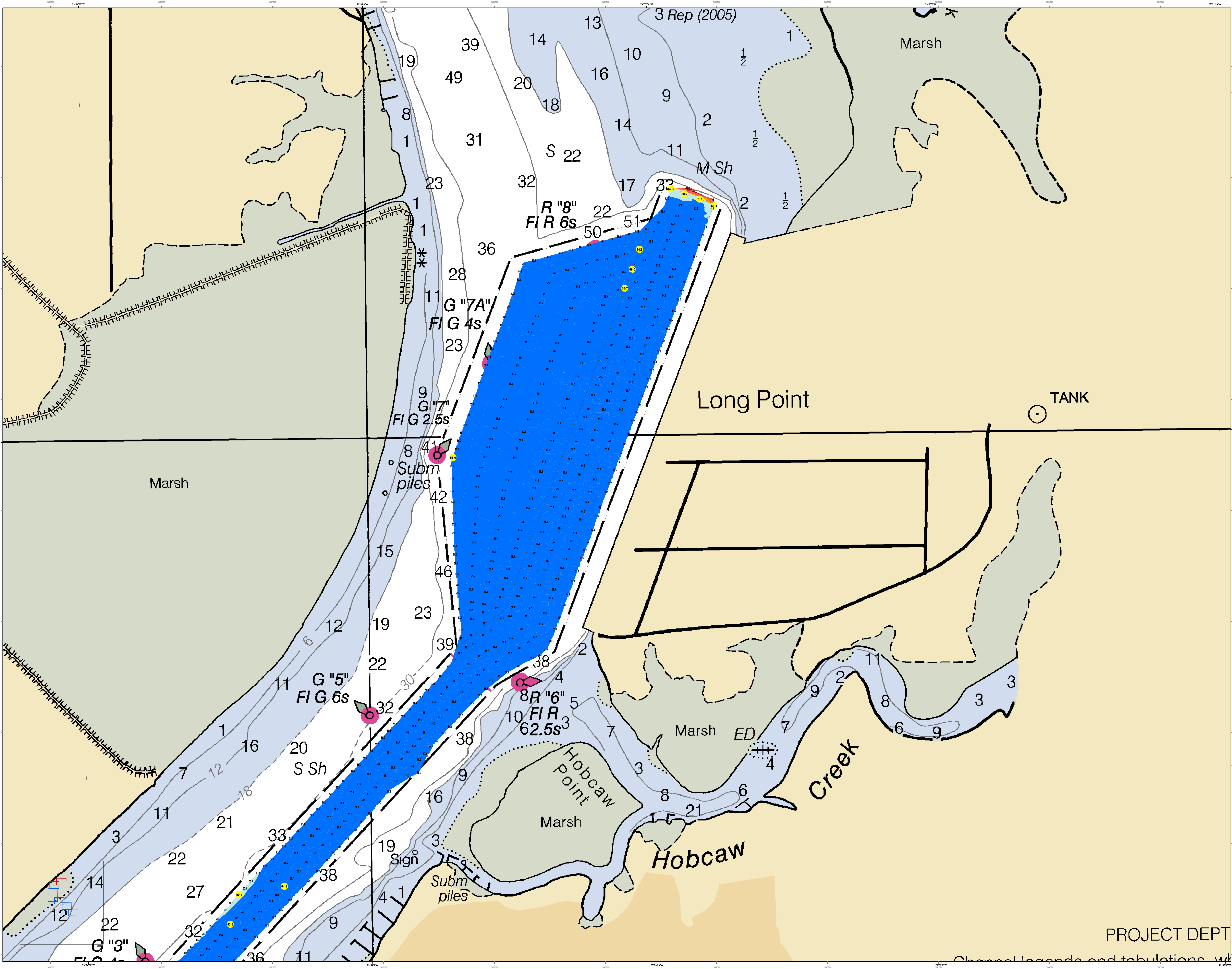


**Legend**

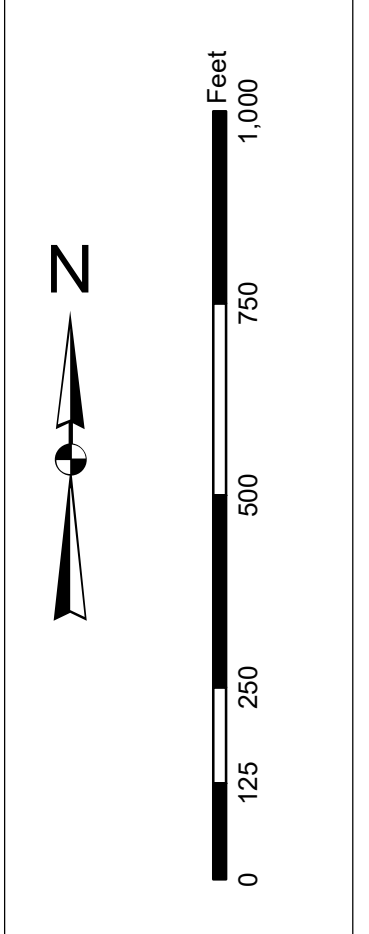
Symbol/Color	Description
Blue shaded area	Shaded Area
Yellow shaded area	Shaded Area
Red shaded area	Shaded Area
Green shaded area	Shaded Area
Black dashed line	Obstruction
Black solid line	Obstruction
Black dotted line	Obstruction
Black dash-dot line	Obstruction
Black long-dash line	Obstruction
Black short-dash line	Obstruction
Black wavy line	Obstruction
Black zig-zag line	Obstruction
Black cross-hatch pattern	Obstruction
Black diagonal-hatch pattern	Obstruction
Black horizontal-hatch pattern	Obstruction
Black vertical-hatch pattern	Obstruction
Black square	Obstruction
Black circle	Obstruction
Black triangle	Obstruction
Black diamond	Obstruction
Black star	Obstruction
Black cross	Obstruction
Black plus	Obstruction
Black asterisk	Obstruction
Black dot	Obstruction
Black dash-dot-dot line	Obstruction
Black long-dash-dot line	Obstruction
Black short-dash-dot line	Obstruction
Black wavy-dot line	Obstruction
Black zig-zag-dot line	Obstruction
Black cross-hatch-dot pattern	Obstruction
Black diagonal-hatch-dot pattern	Obstruction
Black horizontal-hatch-dot pattern	Obstruction
Black vertical-hatch-dot pattern	Obstruction
Black square-dot	Obstruction
Black circle-dot	Obstruction
Black triangle-dot	Obstruction
Black diamond-dot	Obstruction
Black star-dot	Obstruction
Black cross-dot	Obstruction
Black plus-dot	Obstruction
Black asterisk-dot	Obstruction
Black dot-dot	Obstruction
Black dash-dot-dot-dot line	Obstruction
Black long-dash-dot-dot line	Obstruction
Black short-dash-dot-dot line	Obstruction
Black wavy-dot-dot line	Obstruction
Black zig-zag-dot-dot line	Obstruction
Black cross-hatch-dot-dot pattern	Obstruction
Black diagonal-hatch-dot-dot pattern	Obstruction
Black horizontal-hatch-dot-dot pattern	Obstruction
Black vertical-hatch-dot-dot pattern	Obstruction
Black square-dot-dot	Obstruction
Black circle-dot-dot	Obstruction
Black triangle-dot-dot	Obstruction
Black diamond-dot-dot	Obstruction
Black star-dot-dot	Obstruction
Black cross-dot-dot	Obstruction
Black plus-dot-dot	Obstruction
Black asterisk-dot-dot	Obstruction
Black dot-dot-dot	Obstruction
Black dash-dot-dot-dot-dot line	Obstruction
Black long-dash-dot-dot-dot line	Obstruction
Black short-dash-dot-dot-dot line	Obstruction
Black wavy-dot-dot-dot line	Obstruction
Black zig-zag-dot-dot-dot line	Obstruction
Black cross-hatch-dot-dot-dot pattern	Obstruction
Black diagonal-hatch-dot-dot-dot pattern	Obstruction
Black horizontal-hatch-dot-dot-dot pattern	Obstruction
Black vertical-hatch-dot-dot-dot pattern	Obstruction
Black square-dot-dot-dot	Obstruction
Black circle-dot-dot-dot	Obstruction
Black triangle-dot-dot-dot	Obstruction
Black diamond-dot-dot-dot	Obstruction
Black star-dot-dot-dot	Obstruction
Black cross-dot-dot-dot	Obstruction
Black plus-dot-dot-dot	Obstruction
Black asterisk-dot-dot-dot	Obstruction
Black dot-dot-dot-dot	Obstruction
Black dash-dot-dot-dot-dot-dot line	Obstruction
Black long-dash-dot-dot-dot-dot line	Obstruction
Black short-dash-dot-dot-dot-dot line	Obstruction
Black wavy-dot-dot-dot-dot line	Obstruction
Black zig-zag-dot-dot-dot-dot line	Obstruction
Black cross-hatch-dot-dot-dot-dot pattern	Obstruction
Black diagonal-hatch-dot-dot-dot-dot pattern	Obstruction
Black horizontal-hatch-dot-dot-dot-dot pattern	Obstruction
Black vertical-hatch-dot-dot-dot-dot pattern	Obstruction
Black square-dot-dot-dot-dot	Obstruction
Black circle-dot-dot-dot-dot	Obstruction
Black triangle-dot-dot-dot-dot	Obstruction
Black diamond-dot-dot-dot-dot	Obstruction
Black star-dot-dot-dot-dot	Obstruction
Black cross-dot-dot-dot-dot	Obstruction
Black plus-dot-dot-dot-dot	Obstruction
Black asterisk-dot-dot-dot-dot	Obstruction
Black dot-dot-dot-dot-dot	Obstruction

Designed By:	Hydro Software v3.82	Production Date:	15 NOV 2022
Reviewed By:	ALBUQUE	Project Reference Number:	21 NOV 2022
Revised By:	15 NOV 2022	Survey Type:	PC000 ID
Scale:	1 inch = 250 Feet	Survey Title:	CONDITION SURVEY
Projection:	NAD 1983 StatePlane South Carolina FIPS 3900 Feet		

**Charleston Lower Harbor Channel**  
 The information depicted on this map represents the results of surveys made on the dates indicated and can only be used for the purposes for which it was prepared. It is not to be used for any other purpose.  
 Concluded on: 15 NOV 2022  
 Charleston, South Carolina



**Production Notes:**  
 1. This map is a hydrographic chart showing depth soundings and other navigational information.  
 2. Soundings are in feet unless otherwise noted.  
 3. Soundings are based on the datum indicated on the chart.  
 4. Soundings are subject to change and should be used for navigation purposes only.  
 5. Soundings are not to be used for engineering purposes.  
 6. Soundings are not to be used for construction purposes.  
 7. Soundings are not to be used for other purposes.  
 8. Soundings are not to be used for other purposes.  
 9. Soundings are not to be used for other purposes.  
 10. Soundings are not to be used for other purposes.



**Legend**

Soundings	Depth Soundings
Subm Piles	Submerged Piles
Sign	Sign
Marsh ED	Marsh Edge
Structure	Structure
Channel	Channel
Land	Land
Water	Water
Marsh	Marsh
Marsh ED	Marsh Edge
Structure	Structure
Channel	Channel
Land	Land
Water	Water
Marsh	Marsh

Designed By:	Hydro Software v3.82	Survey Date:	15 NOV 2022	Production Date:	21 NOV 2022
Reviewed By:	1:50,000	Project Reference Number:	PC00010	Project Reference Number:	PC00010
Scale:	1 inch = 250 feet	Survey Type:	CONDITION SURVEY	Survey Type:	CONDITION SURVEY
Projection:	NAD 1983 StatePlane South Carolina FIPS 3900 Feet	Projection:	NAD 1983 StatePlane South Carolina FIPS 3900 Feet	Projection:	NAD 1983 StatePlane South Carolina FIPS 3900 Feet

**Charleston Lower Harbor Channel**  
 The information depicted on this map represents the results of surveys made on the dates indicated and call on other surveys as shown on the general conditions existing at that time.  
 Concluded on: 15 NOV 2022  
 Charleston, South Carolina