

U.S. Army Corps of Engineers
Charleston District

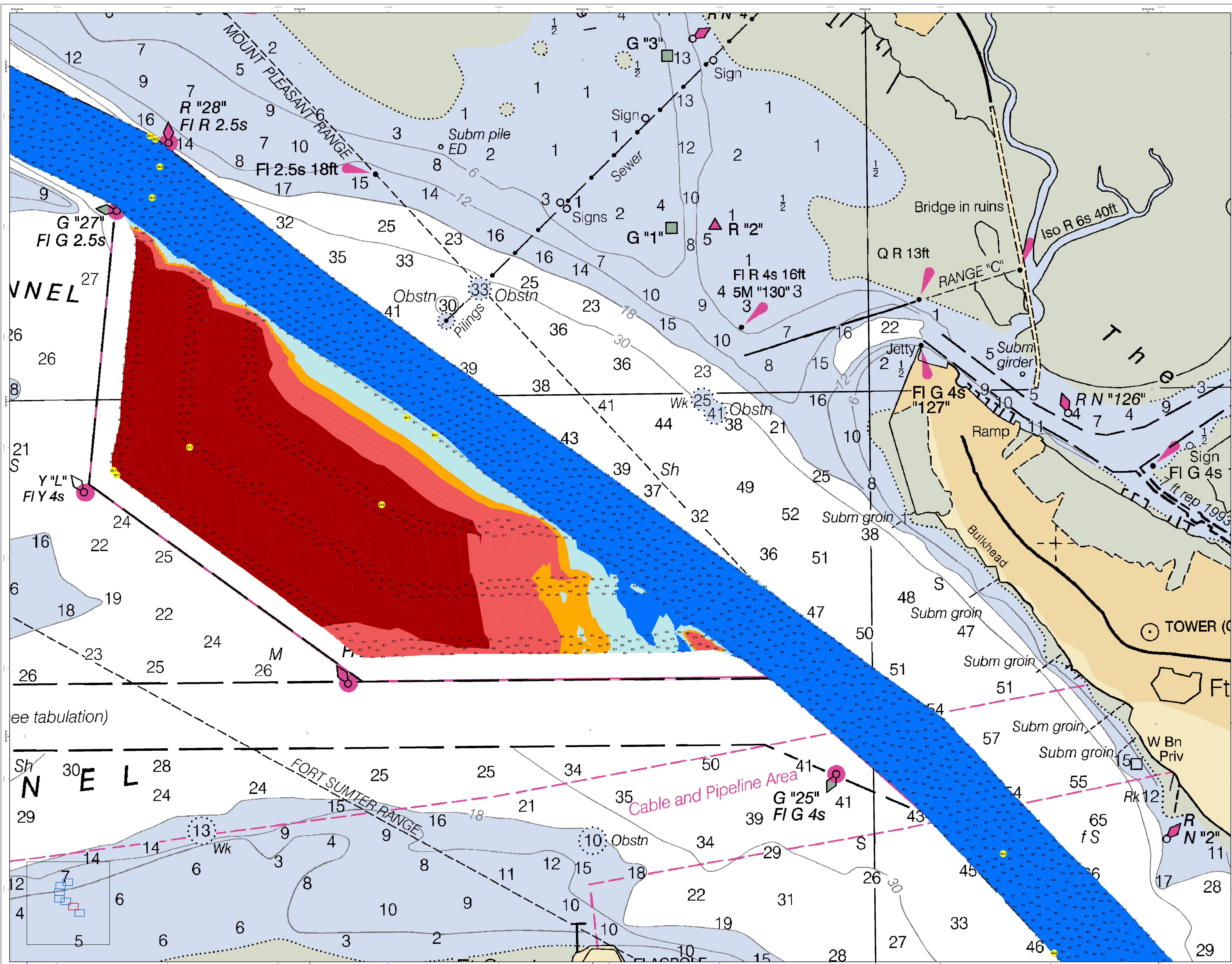
Production Notes:
 1. This chart is produced by the Hydrographic Survey Branch, Charleston District, and is based on the latest available data.
 2. This chart is not to be used for navigation.
 3. Soundings are in feet and meters.
 4. All depths are based on Mean Lower Low Water (MLLW) unless otherwise noted.
 5. Meters are enclosed to be used for navigation.
 6. Chart No. 15027

Legend:
 Soundings: 1-10, 11-20, 21-30, 31-40, 41-50, 51-60, 61-70, 71-80, 81-90, 91-100
 Obstructions: Obstruction Light, Obstruction Bell, Obstruction Buoys
 Navigational Aids: Light, Bell, Buoy
 Other: Submerged Groin, Right of Way Line, Pipeline Area

Designed By:	U.S. Army Corps of Engineers Charleston District Charleston, South Carolina	Production Date:	27 FEB 2023
Reviewed By:	Charleston District Charleston, South Carolina	Project Reference Number:	PC00010
Scale:	1 inch = 250 feet	Survey Date:	15 FEB 2023
Projection:	NAD 1983 StatePlane South Carolina FIPS 3800 Feet	Chart Condition:	CONDITION

Charleston Lower Harbor Channel
 The information depicted on this chart represents the results of surveys made on the dates indicated and call on other sources for the most current and general conditions existing at that time.
 Concluded on: 15 FEB 2023
 Charleston, South Carolina

SHEET REFERENCE NUMBER
C002
SHEET 1 OF 7



U.S. Army Corps of Engineers
Charleston District

Production Notes:
 1. This is a preliminary chart. It is not to be used for navigation.
 2. The information on this chart is based on the latest available data.
 3. Soundings are in fathoms unless otherwise indicated.
 4. The chart is not to be used for navigation.
 5. The chart is not to be used for navigation.
 6. The chart is not to be used for navigation.

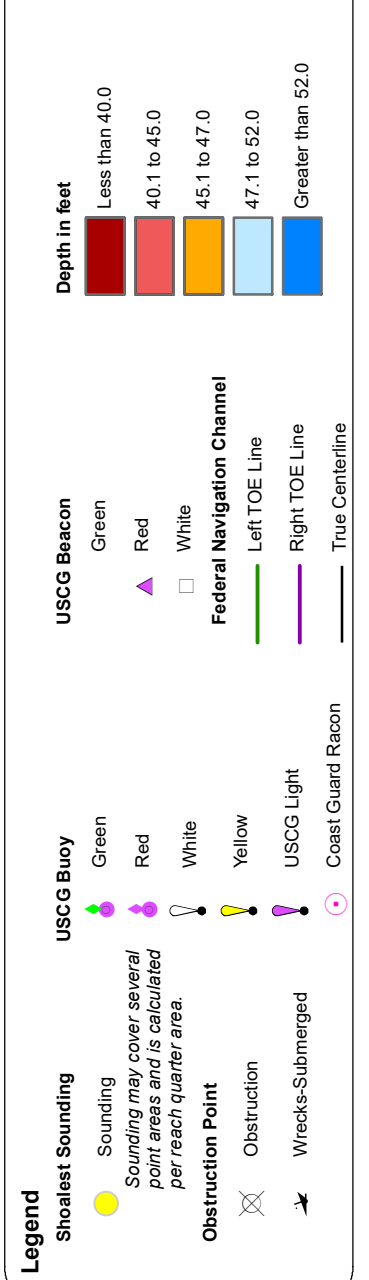
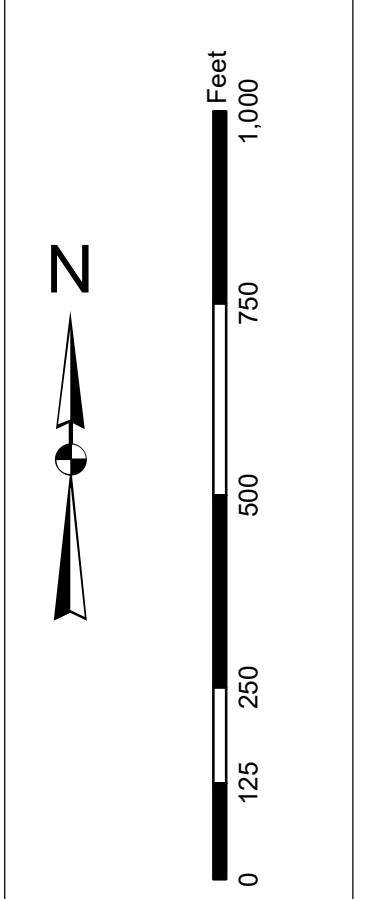
Legend:
 Soundings: 1-10, 11-20, 21-30, 31-40, 41-50, 51-60, 61-70, 71-80, 81-90, 91-100
 Navigational Aids: Light, Buoy, Beacon, etc.
 Obstructions: Obstruction, etc.
 Infrastructure: Jetty, Bulkhead, etc.

Designed By:	Survey Date:	Production Date:
Jeffery B. Smith	15 FEB 2023	27 FEB 2023
Reviewed By:	Project Reference Number:	Project Reference Number:
Jeffery B. Smith	15000	15000
Scale:	Scale:	Scale:
1 inch = 250 Feet	1 inch = 250 Feet	1 inch = 250 Feet
Projection:	Projection:	Projection:
NAD 1983 StatePlane South Carolina FIPS 3900 Feet	NAD 1983 StatePlane South Carolina FIPS 3900 Feet	NAD 1983 StatePlane South Carolina FIPS 3900 Feet

Charleston Harbor Channel
 The information depicted on this map represents the results of surveys made on the dates indicated and conditions existing at that time.
 Concluded on: 15 FEB 2023
 Charleston, South Carolina

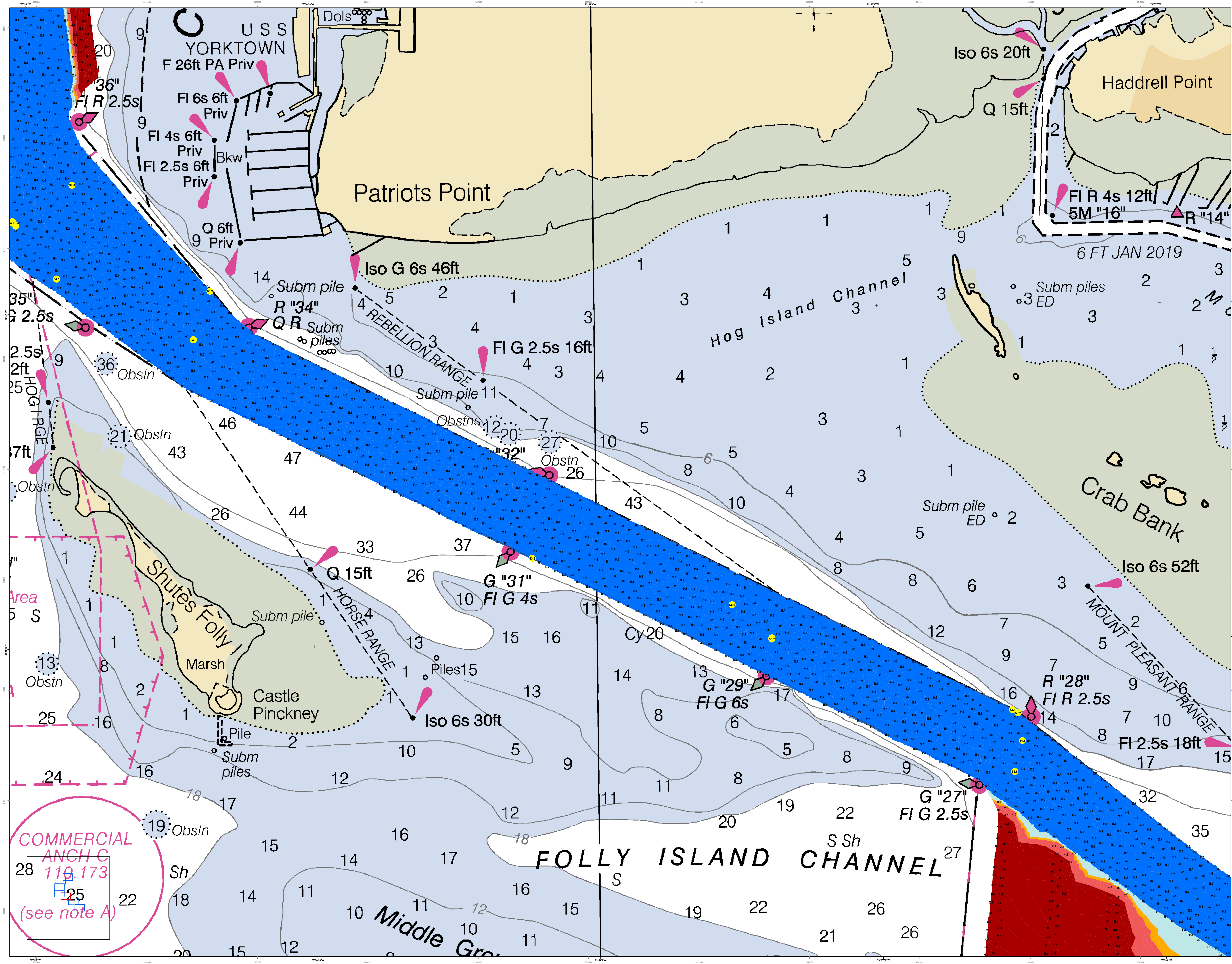
SHEET REFERENCE NUMBER
C002
SHEET 2 OF 7

Production Notes:
 1. This is a preliminary chart. The information on this chart is preliminary and is subject to change without notice.
 2. The information on this chart is preliminary and is subject to change without notice.
 3. The information on this chart is preliminary and is subject to change without notice.
 4. The information on this chart is preliminary and is subject to change without notice.
 5. The information on this chart is preliminary and is subject to change without notice.
 6. The information on this chart is preliminary and is subject to change without notice.
 7. The information on this chart is preliminary and is subject to change without notice.
 8. The information on this chart is preliminary and is subject to change without notice.
 9. The information on this chart is preliminary and is subject to change without notice.
 10. The information on this chart is preliminary and is subject to change without notice.
 11. The information on this chart is preliminary and is subject to change without notice.
 12. The information on this chart is preliminary and is subject to change without notice.
 13. The information on this chart is preliminary and is subject to change without notice.
 14. The information on this chart is preliminary and is subject to change without notice.
 15. The information on this chart is preliminary and is subject to change without notice.
 16. The information on this chart is preliminary and is subject to change without notice.
 17. The information on this chart is preliminary and is subject to change without notice.
 18. The information on this chart is preliminary and is subject to change without notice.
 19. The information on this chart is preliminary and is subject to change without notice.
 20. The information on this chart is preliminary and is subject to change without notice.
 21. The information on this chart is preliminary and is subject to change without notice.
 22. The information on this chart is preliminary and is subject to change without notice.
 23. The information on this chart is preliminary and is subject to change without notice.
 24. The information on this chart is preliminary and is subject to change without notice.
 25. The information on this chart is preliminary and is subject to change without notice.
 26. The information on this chart is preliminary and is subject to change without notice.
 27. The information on this chart is preliminary and is subject to change without notice.
 28. The information on this chart is preliminary and is subject to change without notice.
 29. The information on this chart is preliminary and is subject to change without notice.
 30. The information on this chart is preliminary and is subject to change without notice.
 31. The information on this chart is preliminary and is subject to change without notice.
 32. The information on this chart is preliminary and is subject to change without notice.
 33. The information on this chart is preliminary and is subject to change without notice.
 34. The information on this chart is preliminary and is subject to change without notice.
 35. The information on this chart is preliminary and is subject to change without notice.
 36. The information on this chart is preliminary and is subject to change without notice.
 37. The information on this chart is preliminary and is subject to change without notice.
 38. The information on this chart is preliminary and is subject to change without notice.
 39. The information on this chart is preliminary and is subject to change without notice.
 40. The information on this chart is preliminary and is subject to change without notice.
 41. The information on this chart is preliminary and is subject to change without notice.
 42. The information on this chart is preliminary and is subject to change without notice.
 43. The information on this chart is preliminary and is subject to change without notice.
 44. The information on this chart is preliminary and is subject to change without notice.
 45. The information on this chart is preliminary and is subject to change without notice.
 46. The information on this chart is preliminary and is subject to change without notice.
 47. The information on this chart is preliminary and is subject to change without notice.
 48. The information on this chart is preliminary and is subject to change without notice.
 49. The information on this chart is preliminary and is subject to change without notice.
 50. The information on this chart is preliminary and is subject to change without notice.

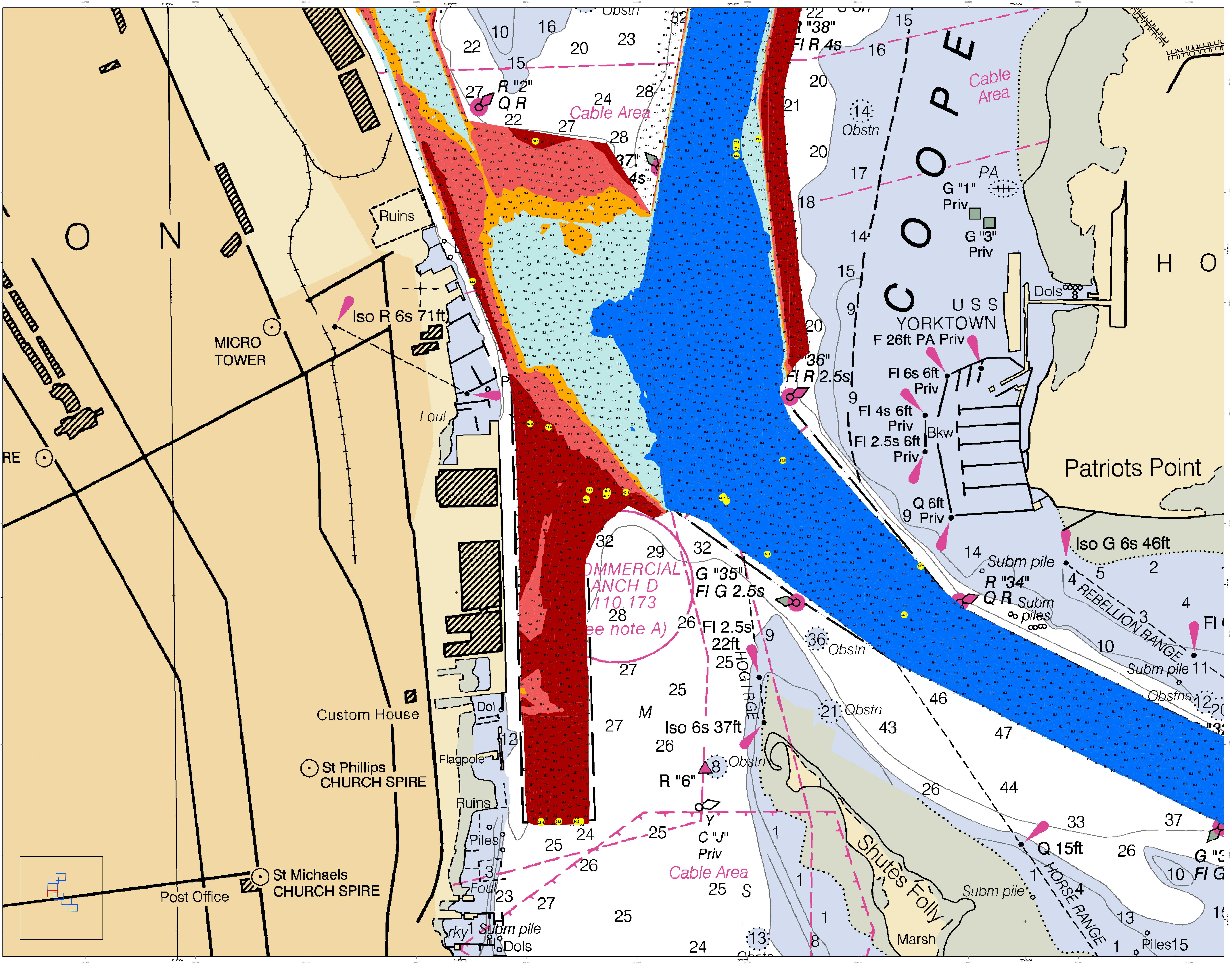


Designed By:	CECAC-GIS/USACE-ARMY/AVIL
Reviewed By:	
Scale:	1 inch = 250 feet
Projection:	NAD 1983 StatePlane South Carolina FIPS 3800 Feet
Survey Date:	15 FEB 2023
Production Date:	27 FEB 2023
Project Reference Number:	110.173
Sheet Title:	COMMERCIAL ANCH G
Sheet Number:	C002
Sheet Condition:	CONDITION

Charleston Lower Harbor Channel
 The information depicted on this map represents the results of surveys made on the dates indicated and call on other charts as indicated. The information is general in nature and is not intended for navigation. It is not to be used for navigation. It is not to be used for navigation.
 Concluded on: 15 FEB 2023
 Charleston, South Carolina



COMMERCIAL ANCH G
 110.173
 25
 (see note A)



U.S. Army Corps of Engineers
Charleston District

Production Notes:
1. This is a preliminary chart. It is not to be used for navigation. It is intended for informational purposes only. It is not to be used for navigation. It is intended for informational purposes only. It is not to be used for navigation. It is intended for informational purposes only.

Legend:
 - Depth Soundings: 1-10, 11-20, 21-30, 31-40, 41-50, 51-60, 61-70, 71-80, 81-90, 91-100
 - Obstructions: Obsn
 - Navigation Aids: Iso R, Iso G, R, G, FI, Q, C, Y, F, M, S, H, L, B, K, W, P, A, S, T, U, V, W, X, Y, Z, AA, AB, AC, AD, AE, AF, AG, AH, AI, AJ, AK, AL, AM, AN, AO, AP, AQ, AR, AS, AT, AU, AV, AW, AX, AY, AZ, BA, BB, BC, BD, BE, BF, BG, BH, BI, BJ, BK, BL, BM, BN, BO, BP, BQ, BR, BS, BT, BU, BV, BW, BX, BY, BZ, CA, CB, CC, CD, CE, CF, CG, CH, CI, CJ, CK, CL, CM, CN, CO, CP, CQ, CR, CS, CT, CU, CV, CW, CX, CY, CZ, DA, DB, DC, DD, DE, DF, DG, DH, DI, DJ, DK, DL, DM, DN, DO, DP, DQ, DR, DS, DT, DU, DV, DW, DX, DY, DZ, EA, EB, EC, ED, EE, EF, EG, EH, EI, EJ, EK, EL, EM, EN, EO, EP, EQ, ER, ES, ET, EU, EV, EW, EX, EY, EZ, FA, FB, FC, FD, FE, FF, FG, FH, FI, FJ, FK, FL, FM, FN, FO, FP, FQ, FR, FS, FT, FU, FV, FW, FX, FY, FZ, GA, GB, GC, GD, GE, GF, GG, GH, GI, GJ, GK, GL, GM, GN, GO, GP, GQ, GR, GS, GT, GU, GV, GW, GX, GY, GZ, HA, HB, HC, HD, HE, HF, HG, HH, HI, HJ, HK, HL, HM, HN, HO, HP, HQ, HR, HS, HT, HU, HV, HW, HX, HY, HZ, IA, IB, IC, ID, IE, IF, IG, IH, II, IJ, IK, IL, IM, IN, IO, IP, IQ, IR, IS, IT, IU, IV, IW, IX, IY, IZ, JA, JB, JC, JD, JE, JF, JG, JH, JI, JJ, JK, JL, JM, JN, JO, JP, JQ, JR, JS, JT, JU, JV, JW, JX, JY, JZ, KA, KB, KC, KD, KE, KF, KG, KH, KI, KJ, KK, KL, KM, KN, KO, KP, KQ, KR, KS, KT, KU, KV, KW, KX, KY, KZ, LA, LB, LC, LD, LE, LF, LG, LH, LI, LJ, LK, LL, LM, LN, LO, LP, LQ, LR, LS, LT, LU, LV, LW, LX, LY, LZ, MA, MB, MC, MD, ME, MF, MG, MH, MI, MJ, MK, ML, MM, MN, MO, MP, MQ, MR, MS, MT, MU, MV, MW, MX, MY, MZ, NA, NB, NC, ND, NE, NF, NG, NH, NI, NJ, NK, NL, NM, NN, NO, NP, NQ, NR, NS, NT, NU, NV, NW, NX, NY, NZ, OA, OB, OC, OD, OE, OF, OG, OH, OI, OJ, OK, OL, OM, ON, OO, OP, OQ, OR, OS, OT, OU, OV, OW, OX, OY, OZ, PA, PB, PC, PD, PE, PF, PG, PH, PI, PJ, PK, PL, PM, PN, PO, PP, PQ, PR, PS, PT, PU, PV, PW, PX, PY, PZ, QA, QB, QC, QD, QE, QF, QG, QH, QI, QJ, QK, QL, QM, QN, QO, QP, QQ, QR, QS, QT, QU, QV, QW, QX, QY, QZ, RA, RB, RC, RD, RE, RF, RG, RH, RI, RJ, RK, RL, RM, RN, RO, RP, RQ, RR, RS, RT, RU, RV, RW, RX, RY, RZ, SA, SB, SC, SD, SE, SF, SG, SH, SI, SJ, SK, SL, SM, SN, SO, SP, SQ, SR, SS, ST, SU, SV, SW, SX, SY, SZ, TA, TB, TC, TD, TE, TF, TG, TH, TI, TJ, TK, TL, TM, TN, TO, TP, TQ, TR, TS, TT, TU, TV, TW, TX, TY, TZ, UA, UB, UC, UD, UE, UF, UG, UH, UI, UJ, UK, UL, UM, UN, UO, UP, UQ, UR, US, UT, UY, UV, UW, UX, UY, UZ, VA, VB, VC, VD, VE, VF, VG, VH, VI, VJ, VK, VL, VM, VN, VO, VP, VQ, VR, VS, VT, VU, VV, VW, VX, VY, VZ, WA, WB, WC, WD, WE, WF, WG, WH, WI, WJ, WK, WL, WM, WN, WO, WP, WQ, WR, WS, WT, WU, WV, WW, WX, WY, WZ, XA, XB, XC, XD, XE, XF, XG, XH, XI, XJ, XK, XL, XM, XN, XO, XP, XQ, XR, XS, XT, XU, XV, XW, XX, XY, XZ, YA, YB, YC, YD, YE, YF, YG, YH, YI, YJ, YK, YL, YM, YN, YO, YP, YQ, YR, YS, YT, YU, YV, YW, YX, YY, YZ, ZA, ZB, ZC, ZD, ZE, ZF, ZG, ZH, ZI, ZJ, ZK, ZL, ZM, ZN, ZO, ZP, ZQ, ZR, ZS, ZT, ZU, ZV, ZW, ZX, ZY, ZZ

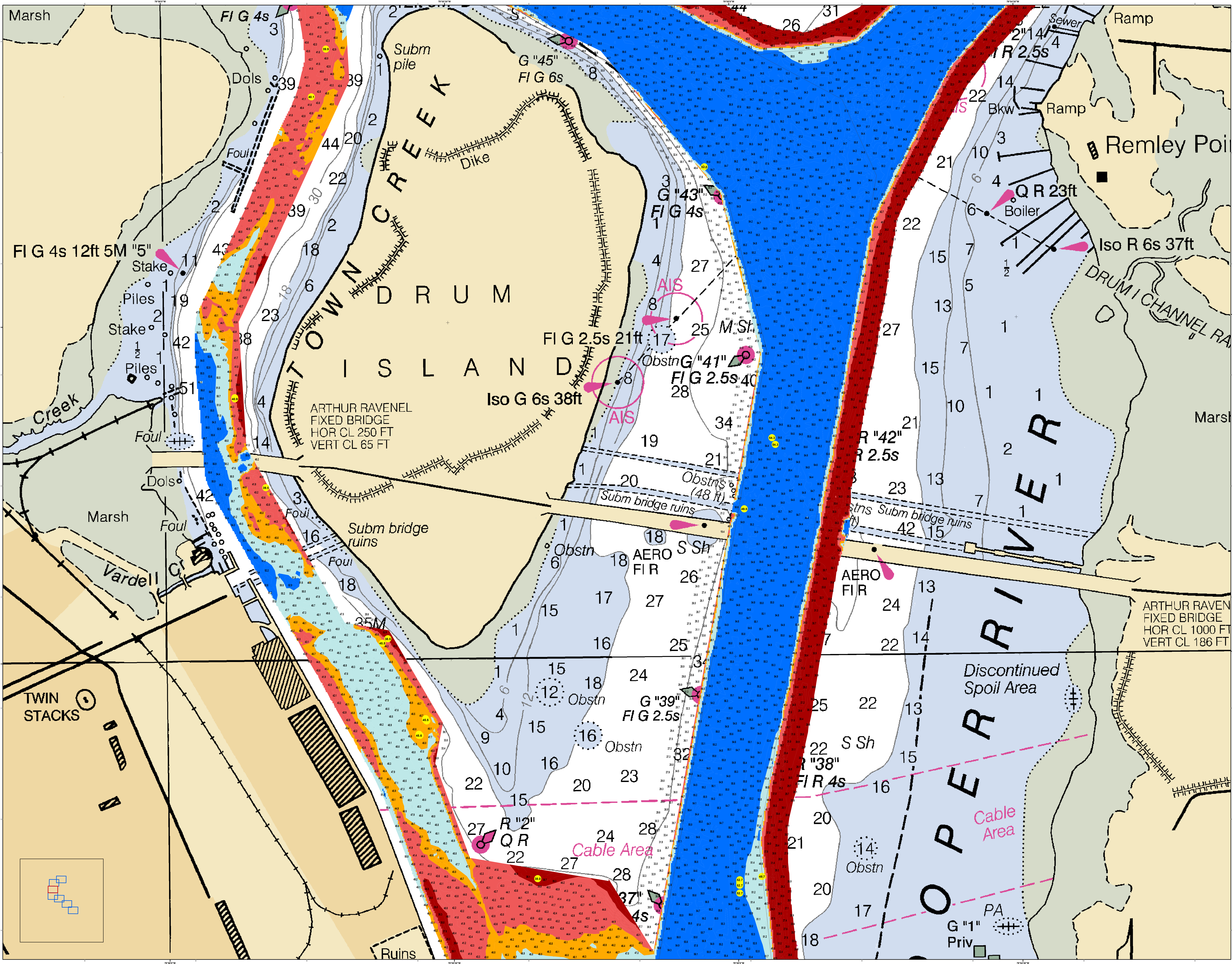
Scale: 1 inch = 250 feet

Production Date: 27 FEB 2023
Survey Date: 15 FEB 2023
Project Reference Number: 27 FEB 2023
Charleston District: CHARLESTON, SOUTH CAROLINA
Branch: SAVANNAH BRANCH
Location: CHARLESTON, SC 29403
Projection: NAD 1983 StatePlane South Carolina FIPS 3900 Feet

Charleston Lower Harbor Channel
 The information depicted on this map represents the results of surveys made on the dates indicated and is not to be used for navigation. It is intended for informational purposes only. It is not to be used for navigation. It is intended for informational purposes only. It is not to be used for navigation. It is intended for informational purposes only.

Charleston, South Carolina

SHEET REFERENCE NUMBER: C002
SHEET 4 OF 7



U.S. Army Corps of Engineers
Charleston District

Production Notes:
 1. This chart is a preliminary production and is subject to change without notice.
 2. Users are advised to verify the accuracy of the data on this chart before using it for navigation.
 3. Soundings are in feet unless otherwise noted.
 4. All bearings are true unless otherwise noted.
 5. All distances are in feet unless otherwise noted.
 6. All heights are in feet unless otherwise noted.
 7. All depths are in feet unless otherwise noted.
 8. All bearings are true unless otherwise noted.
 9. All distances are in feet unless otherwise noted.
 10. All heights are in feet unless otherwise noted.
 11. All depths are in feet unless otherwise noted.

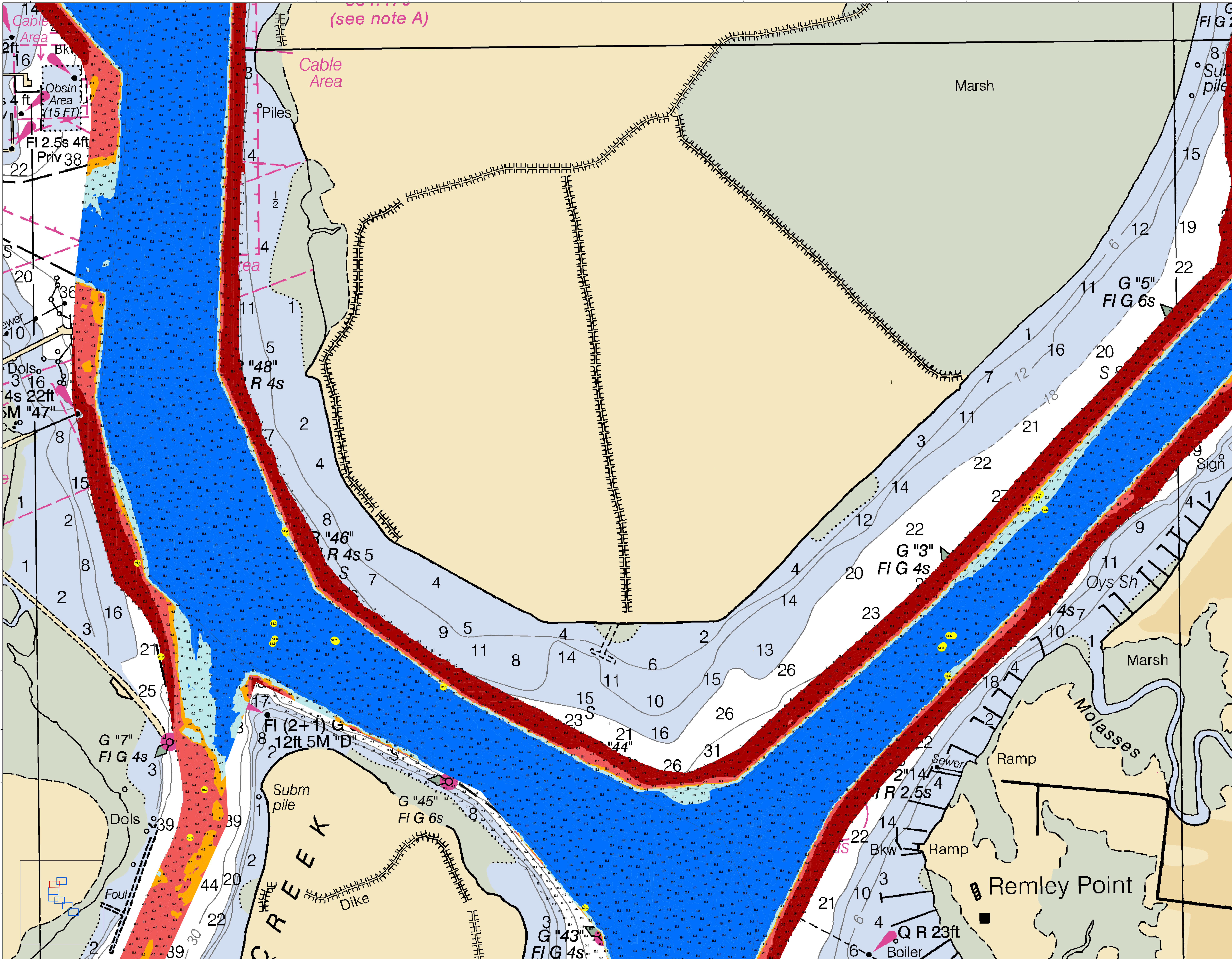
Legend:
 Soundings: 0-10 ft (Red), 11-20 ft (Orange), 21-30 ft (Yellow), 31-40 ft (Light Green), 41-50 ft (Green), 51-60 ft (Light Blue), 61-70 ft (Blue), 71-80 ft (Dark Blue), 81-90 ft (Very Dark Blue), 91-100 ft (Black)

Navigation Aids:
 Buoy: G, R, M, S, Q, I, L, N, D, T, A, W, S, Y
 Light: A, L, F, G, R, S, W, Y, G, R, S, W, Y
 Obstruction: (Symbol)
 Submerged Bridge Ruins: (Symbol)
 Discontinued Spoil Area: (Symbol)
 Cable Area: (Symbol)

Metadata:
 Survey Date: 15 FEB 2023
 Project Reference Number: 27 FEB 2023
 Project Name: CHARLESTON HARBOUR CHANNEL
 Revision: 1.0
 Scale: 1 inch = 250 feet
 Projection: NAD 1983 StatePlane South Carolina FIPS 3800 Feet

Charleston Lower Harbor Channel
 The information depicted on this map represents the results of surveys made on the dates indicated and call out on the dates indicated and conditions existing at that time.
 Concluded on: 15 FEB 2023
 Charleston, South Carolina

SHEET REFERENCE NUMBER: C002
 SHEET 5 OF 7



U.S. Army Corps of Engineers
Charleston District

Production Notes:

- This chart is produced in accordance with the Hydrographic Surveying Manual, HPM 101.3.
- This chart is produced in accordance with the Hydrographic Surveying Manual, HPM 101.3.
- This chart is produced in accordance with the Hydrographic Surveying Manual, HPM 101.3.

Legend:

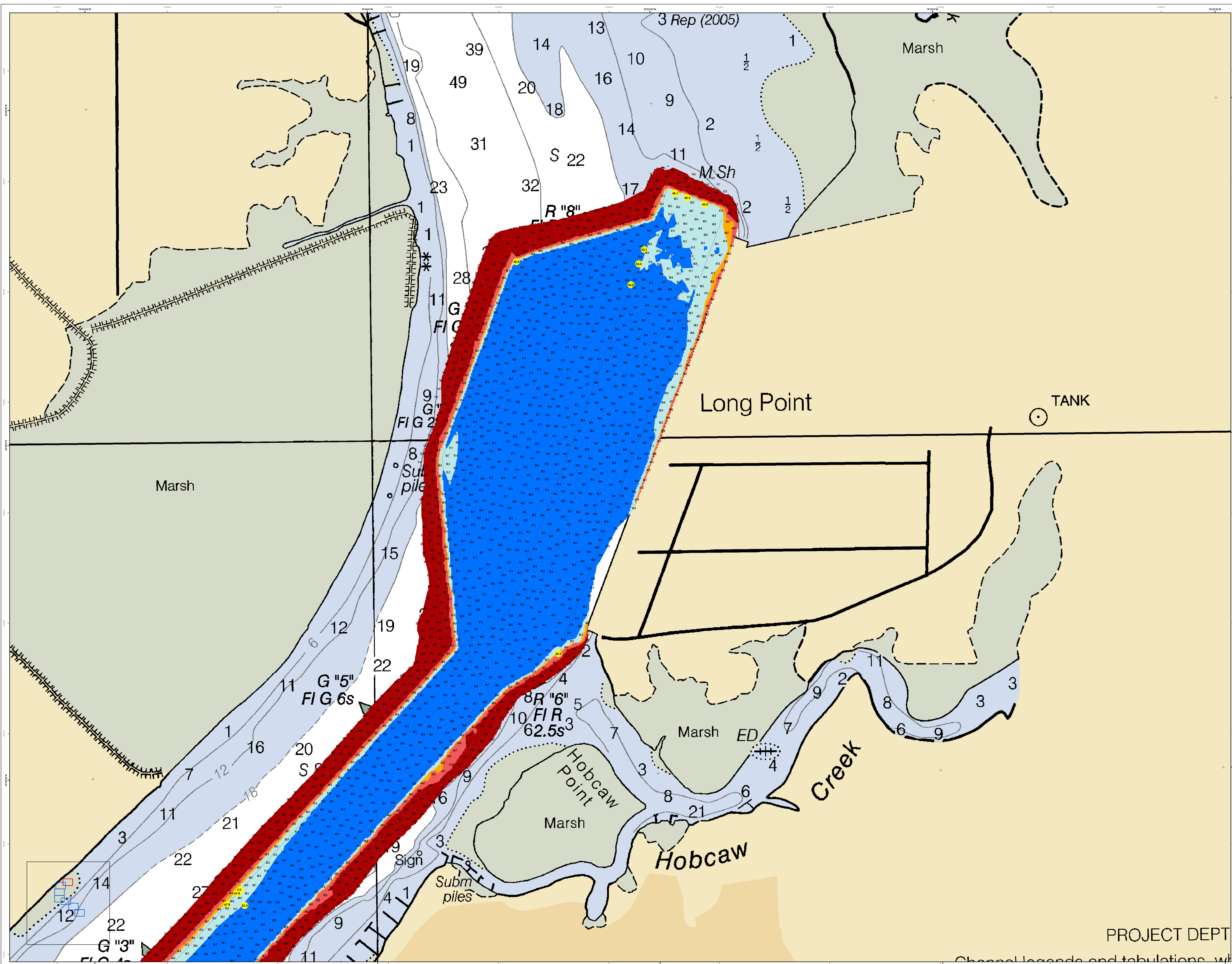
- Hydrographic Chart
- Obstruction
- Submerged Light
- Daymark
- Vertical Daymark
- Daymark with Top and Bottom
- Daymark with Top, Bottom and Color
- Daymark with Top, Bottom and Color and Shape
- Daymark with Top, Bottom and Color and Shape and Color
- Daymark with Top, Bottom and Color and Shape and Color and Shape
- Daymark with Top, Bottom and Color and Shape and Color and Shape and Color
- Daymark with Top, Bottom and Color and Shape and Color and Shape and Color and Shape

Designed By: U.S. Army Corps of Engineers District of South Carolina	Survey Date: 15 FEB 2023	Production Date: 27 FEB 2023
Reviewed By: U.S. Army Corps of Engineers District of South Carolina	Project Reference Number: 15300	Chart Reference Number: 115300
Scale: 1 inch = 250 feet	Chart Reference Number: 115300	Chart Reference Number: 115300
Projection: NAD 83 StatePlane South Carolina FIPS 3900 Feet	Chart Reference Number: 115300	Chart Reference Number: 115300

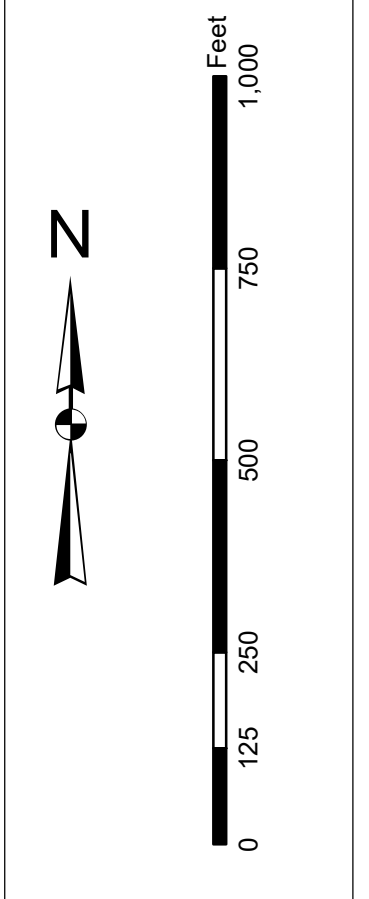
Charleston Lower Harbor Channel
The information depicted on this chart represents the results of surveys made on the dates indicated and is current as of the date of publication. The chart is subject to change and is not to be used for general navigation without the most current data.

Concluded on: 15 FEB 2023
Charleston, South Carolina

SHEET REFERENCE NUMBER: C002
SHEET 6 OF 7



Production Notes:
 1. This chart is a hydrographic chart and is not intended to be used for navigation.
 2. The information on this chart is derived from the following sources:
 a. Hydrographic Survey Data
 b. Aerial Photographs
 c. Other Available Information
 3. Soundings are in feet and meters.
 4. The datum is Mean Lower Low Water (MLLW).
 5. The chart is not to be used for navigation.
 6. The chart is not to be used for navigation.
 7. The chart is not to be used for navigation.
 8. The chart is not to be used for navigation.
 9. The chart is not to be used for navigation.
 10. The chart is not to be used for navigation.



Legend:

- Depth Soundings: 100, 75, 50, 25, 0
- Navigation Channel: Blue
- Obstruction: Red
- Structure: Yellow
- Light: Green
- Other: Various symbols and colors

Designed By: U.S. Army Corps of Engineers District of South Carolina	Reviewed By: U.S. Army Corps of Engineers District of South Carolina	Produced By: U.S. Army Corps of Engineers District of South Carolina	Production Date: 27 FEB 2023
Scale: 1 inch = 250 feet	Projection: NAD 1983 StatePlane South Carolina FIPS 3800 Feet	Project Reference Number: 15C002	Sheet Title: CHANNEL LEGENDS AND TUBULATIONS
Author: U.S. Army Corps of Engineers District of South Carolina	Editor: U.S. Army Corps of Engineers District of South Carolina	Checker: U.S. Army Corps of Engineers District of South Carolina	Condition: CONDITION

Charleston Lower Harbor Channel
 The information depicted on this map represents the results of surveys made on the dates indicated and call on the conditions existing at that time.
 Concluded on: 15 FEB 2023
 Charleston, South Carolina